

DIAMOND DRILLING



010

TOWNSHIP: VINCENT

REPORT No.: 19

WORK PERFORMED BY: NEIL R. MAKI

<u>CLAIM No.</u>	<u>HOLE No.</u>	<u>FOOTAGE</u>	<u>DATE</u>	<u>NOTE</u>
TB 418431	1	14.0	May/82	(1)
	2	28.0	May/82	(1)

NOTES: (1) #190-82

VINCENT TWP. - N.W. CORNER

Camp

TB 418431

TB 513154

old road

old trench

44' x 4' 40'

DPH #1

DPH #2

37' x 4'

12' x 3' 6"

37' x 4'

TR. 2' x 6' x 1'

380'

160'

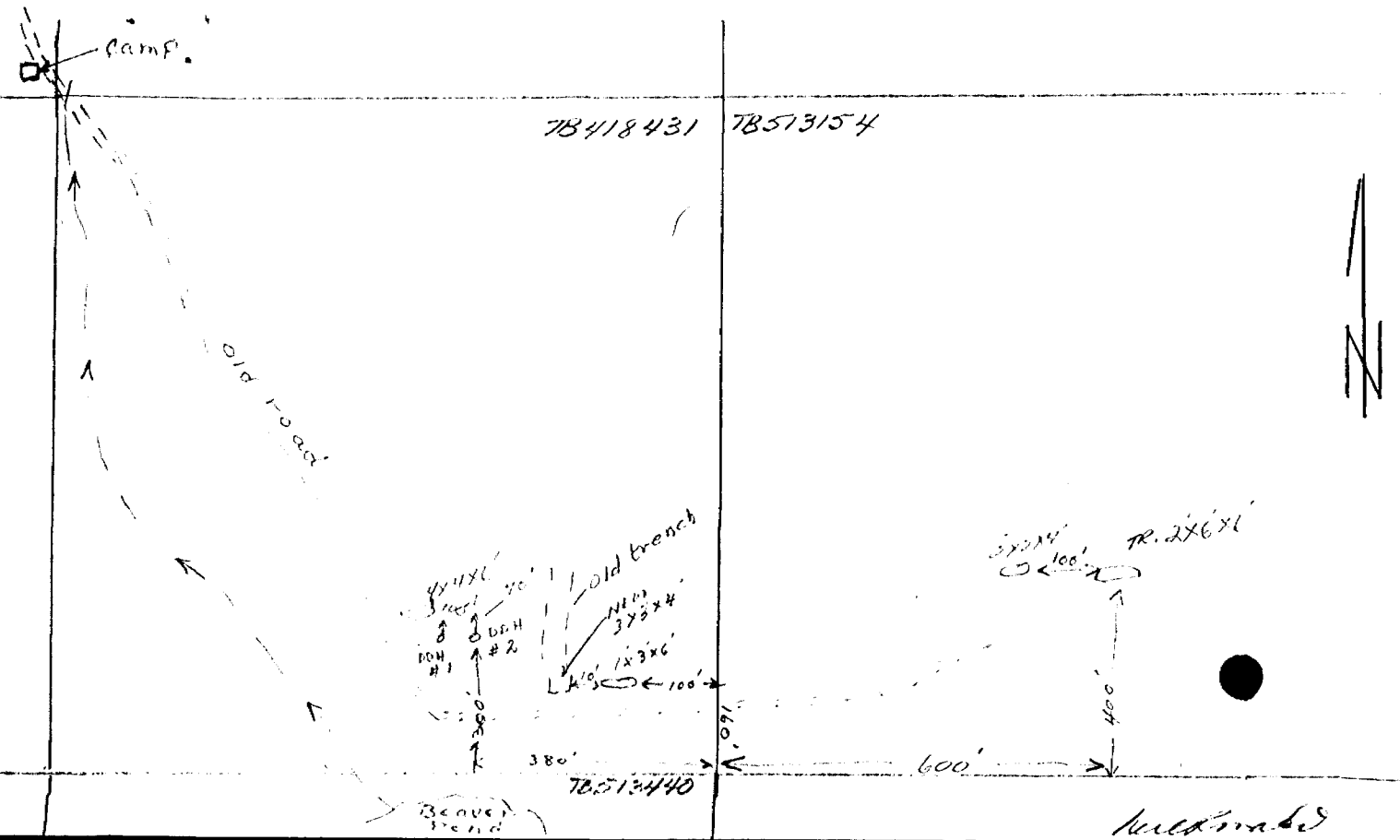
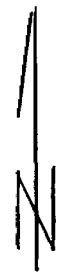
TB 513440

600'

400'

Beaver Pond

Northward





THE MINING ACT - DEPARTMENT OF MINES
DIAMOND DRILLING LOG

Start a new page for every new hole, but fill in top portion of form only on first page for each hole.

FILL IN ON EVERY PAGE

HOLE NO. / PAGE NO. /

DRILLING COMPANY <i>NEIL R MARKI</i>		COLLAR ELEVATION	BEARING OF HOLE FROM TRUE NORTH <i>115°W</i>	TOTAL FOOTAGE <i>28'</i>	DIP OF HOLE AT collar <i>45°</i>	LOCATION OF HOLE IN RELATION TO A FIXED POINT ON THE CLAIM <i>WEST 380' THEN NORTH 300' FROM POST NO 1 CLAIM # 70118421</i>	MAP REFERENCE NO.	CLAIM NO. <i>70118421</i>
DATE HOLE STARTED <i>MAY 24</i>	DATE COMPLETED <i>STILL TO FINISH</i>	DATE LOGGED <i>MAY 24</i>	LOGGED BY <i>N. MARKI</i>		ft		LOCATION (Tp., Lot, Con. OR Lat. and Long.) <i>...</i>	PROPERTY NAME
EXPLORATION CO., OWNER OR OPTIONEE <i>...</i>		DATE SUBMITTED <i>JUNE 4/82</i>	SUBMITTED BY (Signature) <i>N. MARKI</i>		ft			
					ft			

FOOTAGE FROM TO		ROCK TYPE	DESCRIPTION Colour, grain size, texture, minerals, alteration, etc.	PLANAR FEATURE ANGLE	CORE SPECIMEN FOOTAGE +	YOUR SAMPLE NUMBER	SAMPLE FOOTAGE FROM TO		SAMPLE LENGTH	ASSAYS +	
0	28	VOLCANIC (ANDESITE)	GREY-GREEN VOLC. (ANDESITE) CHLORITISED. SOME MINERALIZATION IN CORE LENGTH - F TO M. OR 3/4" AT 2' STRUCK AT 20'								
HOLE NO 1											
WEST OF HOLE NO 2 - N 30 W - DIP 45°											
0	14'	ANDESITE	F/G LIGHT COLOURED ROCK - GREY GREEN. SPECKS PYRITE LENGTH OF CORE AND SEAM AT 14' END OF HOLE								

* For features such as foliation, bedding, schistosity, measured from the long axis of the core.

+ Additional credit available. See Assessment Work Regulations.