



42E12NE0224 15 VINCENT

010

Diamond Drilling

Township of Vincent

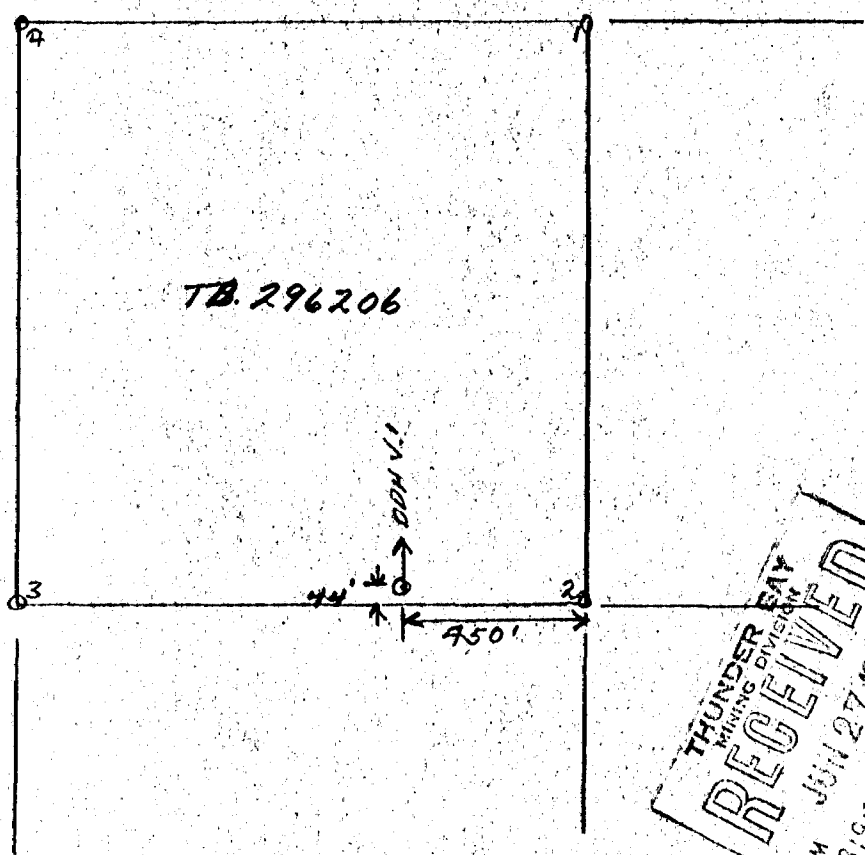
Report No: 15

Work performed by: Hanson Mines Ltd.

Claim No	Hole No	Footage	Date	Note
T.B. 296206	V.1	107' 3"	June/72	(1)
	V.3	109' 5"	May/73	(2)
	V.4	72' 3"	May/73	(2)
	V.5	103'	May/73	(2)
	V.6	100' 5"	May/73	(2)

Notes:

- (....) date placed 120/72
- (1) (Aug/72) 120/72
- (2) (Aug/72) 79/73



THUNDER BAY
MINING DIVISION
RECEIVED
AM JUN 27 1972
718-91001121:213141516 PM

LOCATION OF DDH. V.1
CLAIM TB. 296206
VINCENT TWP.

HANSON MINES LTD.
June 22/72

L. K. Lytle



DIAMOND DRILL RECORD

PROPERTY - Hanson Mines Limited
 LOCATION - Vincent Twp., Claim TB, 296206
 DRILLED BY - L. K. Lytle for Hanson Mines Ltd.
 DATE STARTED - June 6, 1972
 DATE COMPLETED - June 21, 1972

LAT. _____
 DEP. _____
 ELEVATION AT COLLAR _____
 BEARING AT COLLAR N. _____
 DIP: ~~40°~~ 40°

HOLE NO. V.1

SHEET NO. 1/2

FINAL HOLE LENGTH 107' 3" FT.

PROPOSED HOLE LENGTH _____ FT.

CORE SIZE: 7/8"
 L.K. Lytle
 LOGGED BY _____

FOOTAGE FROM TO	DESCRIPTION	SAMPLE		GOLD	SILVER	COPPER	LEAD	ZINC
		No.	Length	Oz./Ton	Oz./Ton	%	%	%
0 - 87'2"	Metadiorite, fine grained, light gray green in colour, lightly sheared at 65° to core, some development of chlorite along shear planes; some fracturing at 35° to core							
2'2" 0 2'3"	White quartz at 65°; barren; scattered thin (to 1/16") white carbonate filling along irregular fractures							
17'3"-17'5"	White quartz at 65° with several thin conformable chlorite seams; barren							
28'5"-28'7"	White quartz carbonate at 60° with several thin conformable chlorite seams; barren							
38'10"-39'3"	White quartz with narrowly banded chlorite and a few thin seams of iron sulphides; banding at 60° to core	V.1-1	1'3"					
44'2"-45'5"	White quartz; granular type; at 60° to core; slight chlorite along some fractures							
45'5"-46'7"	White quartz-carbonate with silicious chloritic bands; some pyrrhotite as thin bands and disseminated with the chlorite							
44'2"-46'7"	As above	V.1-2	2'5"					
46'7"-87'2"	Metadiorite finer grained and slightly more sheared than above							
65'6"-65'10"	Several narrow (to 1") white quartz stringers; barren; light shearing at 75° to core							
68'2"-69'9"	Narrowly banded white quartz and silicious chloritic bands; about 5% sulphides, principally pyrrhotite with slight pyrite, as conformable thin seams and disseminated; sulphides principally with the chloritic bands	V.1-3	1'7"					
74'2"-74'4"	Contains a 1/8 to 1/4 in. pyrrhotite seam and slight fine disseminated pyrrhotite							

RECEIVED
 MINING DIVISION
 116 SPENCER ST. TORONTO, ONT. M5S 1A5
 JUN 27 1972



Hanson Mines Limited
 Vincent Twp. , Claim TB.296206

DIAMOND DRILL RECORD

PROPERTY -
 LOCATION -
 DRILLED BY -
 DATE STARTED -
 DATE COMPLETED -

LAT.
 DEP.
 ELEVATION AT COLLAR
 BEARING AT COLLAR
 DIP: - 40°

HOLE NO. V.1
 FINAL HOLE LENGTH
 PROPOSED HOLE LENGTH
 CORE SIZE:
 LOGGED BY:

SHEET NO. 2 of 2

FT.
 FT.

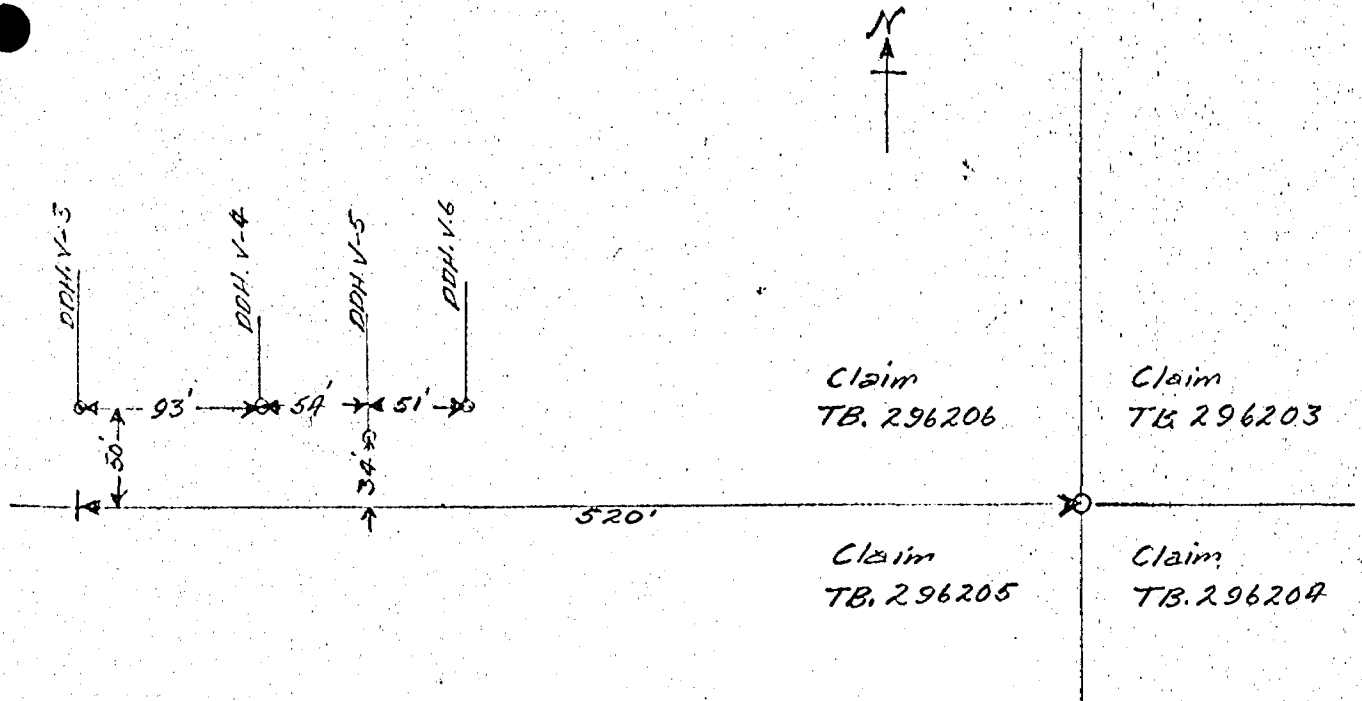
27'2" - 78'6"
 FOOTAGE
 FROM TO

About 60% white quartz and quartz-carbonate stringers in a chloritic schist; barren
 8 6'9" - 87'2" 60% quartz-carbonate stringers in a chloritic matrix; slight epidote; slight fine disseminated pyrrhotite
 8 7'2" Lost drill water
 88'5" - 89'0" 4 0% white quartz-carbonate in a chloritic schist; in part well mineralized with fine pyrite and some pyrrhotite
 87'2" - 107'3" Altered tuff; quite chloritic; sheared at 65° to core
 91'0" Open seam, about 2 in.; fault †
 98'4" - 98'7" White quartz; conformable; barren
 107'3" End of hole

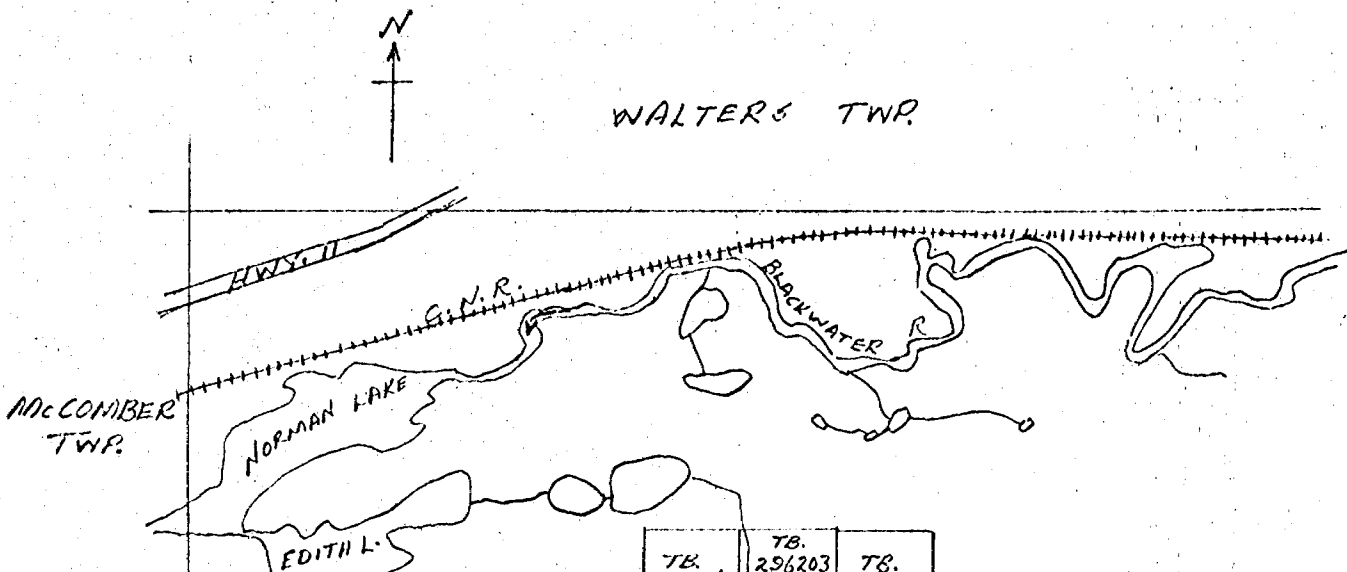
SAMPLE		GOLD	SILVER	COPPER	LEAD	ZINC
		Oz./Ton	Oz./Ton	%	%	%
V.1-4	4'9"					
V.1-5	0'6"					
V.1-6	0'7"					

Note: Core, except for samples, at drill hole site.
 0° - 91° - ground very blocky
 91° - 107° - ground not blocky
 After reaching 107'3", hole caved at 91° requiring reaming and cementing before it can be deepened, if desired.





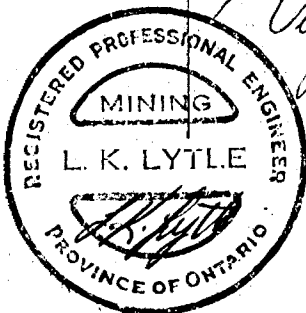
DRILL HOLE LOCATIONS
Scale: 1 in. = 100 ft.



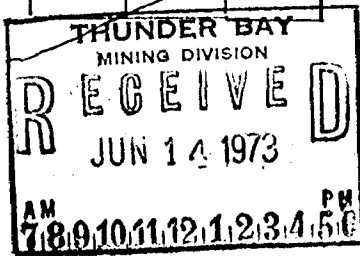
TB. 296206	TB. 296203	TB. 336180
TB. 296205	TB. 296204	TB. 336181

CLAIMS LOCATION
VINCENT TWP.

Scale: 1 in. = 1/2 mile



Vincent Twp.
Reprt # 79-73
Hanson Mines Ltd



June 19, 1973
L. Lytle

DIAMOND DRILL LOGHOLE NO. V.3PROPERTY - Hanson Mines LimitedDIP OF HOLE - 57°LOCATION - Vincent Twp., Ont.
Claim TB.296206
520' W. & 50' N. of No.2 PostBEARING - N.DEPTH - 109'5"DRILLED - May 13 - 17, 1973CORE SIZE - 7/8 in.DRILLED & LOGGED BY - L. K. Lytle

<u>FOOTAGE</u>	<u>DESCRIPTION</u>	<u>ASSAY, GOLD, oz/ton</u>
0'-109'5"	Metadiorite; fine grained; light gray-green in colour; lightly sheared at 45° to core; occasional thin (to 1/16") white carbonate quartz seams conformable to schistosity.	
8'2"- 8'8"	Quartz-carbonate; white; conformable at 45° to core few thin chlorite seams along fractured with slight pyrite.	
8'2"- 8'8"	Sample No. V.3-1	-----
23'4"-23'8"	White quartz; barren.	
44'11"-45'8"	Cherty grayish quartz; thin chlorite seams along fractures, some with fine pyrrhotite.	
44'11"-45'8"	Sample No. V.3-3	-----
15'6"- 17'9"	Narrowly banded quartz and chlorite schist; fairly well mineralized with fine pyrrhotite.	
15'6"- 17'9"	Sample No. V.3-2	-----
52'4"- 53'10"	Granular white quartz with some carbonate; some thin chloritic seams along fractures with very slight fine pyrrhotite.	
52'4"- 53'10"	Sample No. V.3-4	-----
59'	- Light shearing at 40° to core	
60'	- Light shearing at 30° to core	
61'8"- 63'7"	White quartz with a few narrow chlorite seams	
61'8"- 63'7"	Sample No. V.3-5	-----
74'	- Light shearing at 50° to 55°	
63'7"- 93'0"	Fairly numerous thin carbonate seams along occasional shear planes and along some irregular fractures	
87'6"- 88'0"	Chlorite schist	
88'0"- 89'2"	White to grayish quartz with conformable thin chlorite bands at 65° to core; some thin seams of fine pyrrhotite with some of the chloritic bands	
88'0"- 89'2"	Sample No. V.3-6	-----

DIAMOND DRILL LOG

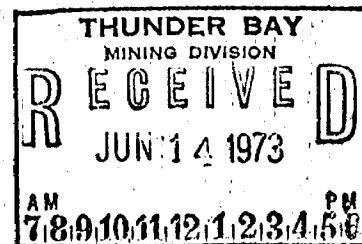
HOLE NO. V.3 contd.

FOOTAGE

DESCRIPTION

ASSAY, GOLD, oz/ton

90'2"- 90'4" - White quartz carbonate.
105'4"-105'10"- White quartz and chlorite; narrowly banded
at 65° to core
109'5" - End of hole



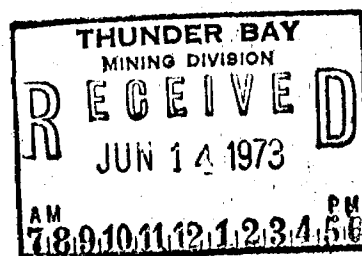
DIAMOND DRILL LOGHOLE NO V.4PROPERTY - Hanson Mines LimitedDIP OF HOLE - 54°LOCATION - Vincent Twp., Ont .
Claim TB.296206
427' W. & 50' N. of No.2 PostBEARING - N.DEPTH - 72'3"DRILLED - May 18 - 22, 1973CORE SIZE - 7/8 in.DRILLED AND LOGGED BY - L. K. Lytle

<u>FOOTAGE</u>	<u>DESCRIPTION</u>	<u>ASSAY, GOLD, oz/ton</u>
0'-0" - 57'9"	- Metadiorite; fine grained; light gray-green in colour; lightly sheared at 60° to core; some development of chlorite; an occasional small pyrite crystal.	
3'9" - 4'5"	- Mud and sand seam (open fracture to surface ?)	
11'3"	- 1/4 in. white carbonate-quartz seam at 40° to core.	
30'2" - 39'0"	- Sheared at 30° to 40° to core; almost a chlorite schist; occasional thin white carbonate seams along some shear planes.	
33'9" - 34'8"	- 40% white quartz stringers parallel to schistosity at 30°; some hornblende with the quartz.	
33'9" - 34'8"	- Sample No. V.4-1	-----
39'0" - 57'9"	- An occasional thin white carbonate seam along some shear planes or along an occasional irregular fracture.	
57'9" - 58'2"	- White quartz at 60° to core; few small chlorite inclusions on fractures; slight pyrrhotite as a few scattered blebs.	
58'2" - 58'6"	- Chlorite schist at 60° to core; scattered small blebs of pyrrhotite and trace of fine chalcopyrite.	
57'9" - 58'6"	- Sample No. V.4 - 2	-----
58'6" - 60'5"	- Iron formation; a silicious chloritic matrix; dark greenish in colour; fairly narrowly banded at 50° to core; 20% narrow conformable bands of white quartz; fairly well mineralized with fine magnetite, disseminated and as some partial thin seams along shear planes; slight carbonate; some pyrrhotite as scattered small blebs and occasional partial thin seams.	
59'4" - 59'7"	- Chlorite schist with disseminated small blebs of pyrrhotite/	
58'6" - 59'7"	- Sample No. V.4 - 3; as above	-----
59'7" - 60'5"	- Sample No. V.4 - 4; as above but also contains slight fine disseminated galena	-----

DIAMOND DRILL LOG

HOLE NO. V.4 contd.

<u>FOOTAGE</u>	<u>DESCRIPTION</u>	<u>GOLD, oz/ton</u>
60'5" - 62'8"	- Sheared metadiorite; as from 39'0"-57'9"	
62'8" - 64'0"	- Iron formation; silicious chloritic matrix; grayish to greenish in colour; fairly narrowly banded at 50° to core; more silicious and less magnetite than from 58'6"-60'5" and heavier pyrrhotite mineralization (10%); very slight fine pyrite with some of the pyrrhotite.	
62'8" - 64'0"	- Sample No. V.4 - 5	-----
64'0" - 65'2"	- Chlorite schist; few irregular white carbonate seams; Sample No. V.4 - 6	-----
65'2" - 67'8"	- Iron formation as from 62'8"-64'0"; also very sparse fine disseminated arsenopyrite and trace of chalcopyrite; Sample No. V.4 - 7	-----
67'8" - 69'9"	- As above, but less sulphides; slight sphalerite. Sample No. V.4 - 8	-----
69'9" - 72'3"	- Metadiorite; fine grained; gray colour; lightly sheared at 70° to core	
72'3"	- End of hole	



DIAMOND DRILL LOGHOLE NO. V.5PROPERTY - Hanson Mines LimitedDIP OF HOLE - 40°LOCATION - Vincent Twp., Ont.
Claim TB.296206
373' W. & 34' N. of No.2 PostBEARING - N.DEPTH - 103'0"DRILLED - May 23 - 29, 1973CORE SIZE - 7/8 in.DRILLED AND LOGGED BY - L. K. Lytle

<u>FOOTAGE</u>	<u>DESCRIPTION</u>	<u>ASSAY, GOLD, oz/ton</u>
0'0" - 8'0"	Casing; some sand seams.	
8'0" - 38'6"	Metadiorite; fine grained; light gray-green in colour; lightly sheared at 50° to 60° to core; some development of chlorite.	
8'7" - 10'0"	Fine granular quartz with 20% thin seams of chlorite schist; trace of fine pyrrhotite.	
8'7" - 10'0"	Sample No. V.5 - 1	-----
13'6" - 13'9"	60% barren white quartz-carbonate in chloritic schist.	
14'9" - 14'10"	40% fine granular white quartz in chlorite schist; slight pyrrhotite	
25'	- Lost return drill water	
16'6" - 38'6"	Scattered thin white carbonate seams along some shear planes.	
38'6" - 39'3"	White quartz with 20% thin seams of chlorite schist. Sample No. V.5- 2	-----
39'3" - 78'10"	Metadiorite; slightly coarser grained and less sheared than above; an occasional thin carbonate or quartz-carbonate seam.	
78'10" - 79'1"	Chlorite schist; at 60° to core	
79'7" - 81'4"	White quartz; few thin chloritic seams on fractures; slight fine pyrrhotite with the chlorite. Sample No. V.5 - 3	-----
81'4" - 83'0"	40% white quartz in chlorite schist; schist well mineralized with fine disseminated arsenopyrite and pyrrhotite. Sample No. V.5 - 4	-----
83'0" - 83'8"	Chlorite schist; 20% interbanded white quartz; trace of fine pyrrhotite. Sample No. V.5 - 5	-----

DIAMOND DRILL LOG

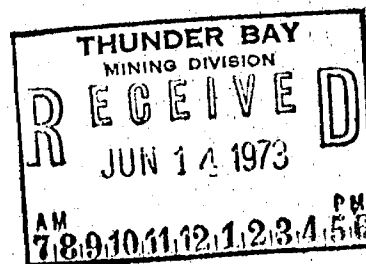
HOLE NO. V.5 contd.

FOOTAGE

DESCRIPTION

ASSAY, GOLD, oz/ton

- 83'8"- 87'1" - 50% banded white quartz in silicious chloritic schist; irregular seams of pyrrhotite with trace of chalcopyrite along fractures in the quartz; schist well mineralized with fine disseminated pyrrhotite. Sample No. V.5 - 6 -----
- 87'1"- 88'1" - 60% white quartz interbanded with chlorite schist; fairly well mineralized with fine disseminated pyrrhotite and arsenopyrite. Sample No. V.5 - 7 -----
- 88'1"- 88'6" - Chlorite schist
- 88'6"-102'11"- Metadiorite; as from 16'6"-38'6"
- 95'3"- 95'8" - White quartz with thin coatings of chlorite along some fractures; trace of fine disseminated sulphides. Sample No. V.5 - 8 -----
- 101'6"-102'11"- White quartz with 20% interbanded thin chloritic seams; slight fine disseminated pyrrhotite with the chlorite. Sample No. V.5 - 9 -----
- 102'11"-103'0" - Chlorite schist.
- 103'0" - End of hole.



DIAMOND DRILL LOGHOLE NO. V.6PROPERTY - Hanson Mines LimitedDIP OF HOLE - 55°LOCATION - Vincent Twp., Ont.
Claim TB.296206
322' W. & 50' N. of No. 2 PostBEARING- N.DEPTH - 100'5"DRILLED - May 30 - June 5, 1973.CORE SIZE- 7/8 in.DRILLED AND LOGGED BY- L. K. Lytle

<u>FOOTAGE</u>	<u>DESCRIPTION</u>	<u>ASSAY, GOLD, oz/ton</u>
0'0"- 2'0"	- Casing	
0'0"- 31'8"	- Metadiorite; gray to gray-green in colour; lightly sheared at 60° to 65° to core; partial chloritization in scattered narrow sections; an occasional thin white carbonate seam.	
9'0"	- Lost return drill water.	
14'0"	- Cave	
17'02- 318'2	- Fairly numerous thin white carbonate seams along shear planes and occasionally along an irregular fracture	
27'10"-28'2"	- White quartz; finely granular; conformable; few thin chloritic seams Sample No. V.6 - 1	-----
31'8"- 78'0"	- Metadiorite; medium grained; grayish-green in colour; fairly massive; an occasional thin white carbonate-quartz seam.	
71'0"- 73'0"	- Lightly sheared at 50° to core.	
78'0"- 83'0"	- Metadiorite; as from 0'-31'8"; light shearing at 60° to core.	
83'0"- 85'0"	- Very hard white to grayish quartz with 10% thin chloritic seams at 60° to core; some pyrrhotite as thin seams and blebs with the chloritic seams, also occasionally on fractures in the quartz. Sample No. V.6 - 2	-----
85'0"-87'11"	- Very hard white quartz; scattered blebs of chlorite on fractures in the quartz; fine to coarse arsenopyrite with most of the chlorite and occasionally as a scattered crystal in the quartz; slight pyrrhotite with the arsenopyrite; slight sericite with some of the chlorite. Sample No. V.6 - 3	-----
87'1"- 87'112	- Chlorite schist at 60° to core; dark green in colour; few thin white carbonate seams along fractures; appears barre. Sample No. V.6 - 4	-----

DIAMOND DRILL LOG

HOLE NO. V.6 contd.

FOOTAGE

DESCRIPTION

ASSAY, GOLD, oz/ton

- 87'11"-91'3" - White to grayish white quartz with 25% thin chloritic seams at 45° to 50° to core; fairly well mineralized with pyrrhotite as scattered thin seams with the chlorite and as occasional scattered blebs in the quartz; very slight chalcopyrite with the pyrrhotite, in part; very slight fine magnetite with some of the chlorite.
Sample No. V.6 - 5 -----
- 91'3"-100'5" - Chloritic schist; sheared at 60° to core; grayish green in colour; an occasional thin white carbonate seam along a shear plane; (sheared metadiorite).
- 93'8"- 93'10" - Mud seam
- 100'2"-100'4" - Mud seam
- 100'5" - End of hole

