



Township of SUMMERS

Report N^o: 22

Work performed by: Gold Ridge Mines Inc.

Claim N ^o	Hole N ^o	Footage	Date	Note
TB 350544	S-1	250'	June/75	(1) (2)
	S-2	250'	July/75	(1) (2)
	S-3	208'	July/75	(1) (2)
TB 350543	S-4	236'	July/75	(1) (2)
	S-5	274'	July/75	(1) (2)
	S-6	254'	July/75	(1) (2)
	S-7	246'	Aug/75	(1) (2)

Notes:

(1) FOR MORE INFORMATION SEE FILE #63.3351

(2) #127-75

DIAMOND DRILL RECORD

NAME OF PROPERTY _____
 HOLE NO. S - 1 LENGTH _____
 LOCATION _____
 LATITUDE _____ DEPARTURE _____
 ELEVATION _____ AZIMUTH _____ DIP _____
 STARTED _____ FINISHED _____

FOOTAGE	DIP	AZIMUTH	FOOTAGE	DIP	AZIMUTH

HOLE NO. _____ SHEET NO. 2

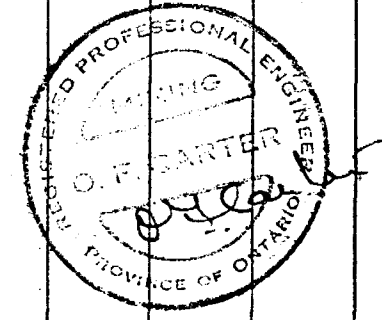
REMARKS _____

LOGGED BY O. F. CARTER

FOOTAGE		DESCRIPTION	SAMPLE				ASSAYS				
FROM	TO		NO.	% SULPHIDES	FOOTAGE			% Cu	% Fe	OZ/TON Au.	OZ/TON Ag
					FROM	TO	TOTAL				
215	217	Vein, 30% qtz. with brown carb, minor as <u>Samples</u>	0919	3	194	199	5.0			.02	
			0920	10	199	204	5.0			.02	
			0921	4	204	209	5.0			.02	
			0922	6	209	212	3.0			.07	
			0935	5	212	215	3.0			.03	
217	250	Andesite, grey-green, med. gr, fairly mass, indef. calc banding. 224' - 3" wh. qtz. calc, chlor, dry									
	250	END.									
		Core racked and stored at Line 6 E on road through claims.									

EM. 6 - 1168

LANGRIP LIMITED,



DIAMOND DRILL RECORD

NAME OF PROPERTY GOLD RIDGE MINES INC.
 HOLE NO. S - 2 LENGTH 250'
 LOCATION SUMMERS TWP. BEARDMORE, ONTARIO C1 - 350544
 LATITUDE 33 S DEPARTURE 5300 E (1974 Grid)
 ELEVATION _____ AZIMUTH _____ DIP - 45°
 STARTED JULY 1, 1975 FINISHED JULY 4, 1975.

FOOTAGE	DIP	AZIMUTH	FOOTAGE	DIP	AZIMUTH

HOLE NO. S - 2 SHEET NO. 1

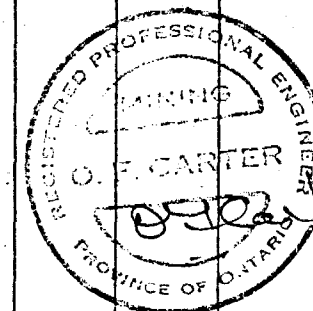
REMARKS _____

LOGGED BY O. F. CARTER

FOOTAGE		DESCRIPTION	SAMPLE				ASSAYS							
FROM	TO		NO.	SULPHIDES	FOOTAGE			%	%	OZ/TON	OZ/TON			
					FROM	TO	TOTAL							
0	10	Casing												
10	38	Andesite, dark, greenish, chloritized, sh'd @ 45°, fine carb on shearing, amygs.												
38	60	Andesite, grey, mass, hard,												
60	145	Andesite, granular to 80', grey-green, many dark flakes parallel shearing @ 45°. 98' - 3" qtz carb chlor, dry.												
145	175	Andesite, chlor, sh'd, 25% incl. bands of grey wacke like mat. with indef. contacts, sh'd @ 45°, carb. str.												
175	187	Vein zone - 30% wh. qtz. with brown carb. and carb breccia. 4.5% sulphide, clusters and crystals of arseno-pyrite, minor pyr. 45°.	0923	4	175	179	4.0			.03				
			0924	4	179	183	4.0			.03				
			0925	5	183	187	4.0			.03				
187	217	Andesite, grey-green, mass to sl. sh'd, calc str.												
	217	END												
		Core racked and stored at Line 6 E on road through property.												

EM. 6-1168

LANGRISH LIMITED,



DIAMOND DRILL RECORD

NAME OF PROPERTY GOLD RIDGE MINES INC.
 HOLE NO. S - 3 LENGTH 208'
 LOCATION SUMMERS TOWNSHIP, BEARDMORE AREA, ONTARIO CL - 350544
 LATITUDE 33 S DEPARTURE 5400 E
 ELEVATION _____ AZIMUTH 330° DIP - 45°
 STARTED JULY 6, 1975 FINISHED JULY 12, 1975.

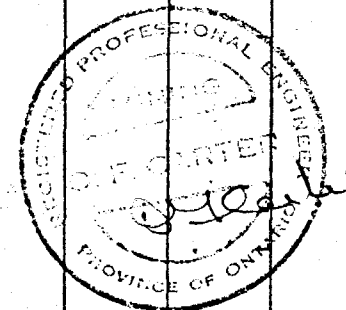
FOOTAGE	DIP	AZIMUTH	FOOTAGE	DIP	AZIMUTH

HOLE NO. S - 3 SHEET NO. 1

REMARKS _____

LOGGED BY O. F. CARTER, P. ENG.

FOOTAGE		DESCRIPTION	SAMPLE				ASSAYS						
FROM	TO		NO.	% SULPHIDES	FOOTAGE		%	%	OZ/TON	OZ/TON			
					FROM	TO					TOTAL		
0	8	Casing											
8	104	Andesite, grey-green, chlor, mass to sh'd at 45, few amygs, many calc str. along shearing.											
104	142	Andesite, mass, grey-green, scatt. qtz. str. and lacings.											
142	144.5	vein, 70% qtz. calc, chlor, 1% Po, 45°.	0936		142	144.5	2.5						
144.5	174	Andesite, dark, green-grey, chlor, calc. str., sh'd with incl. more massive sections.											
174	176	Vein, 60% qtz. and brown carb, 1% AS, minor pyr. 45°.											
176	208	Andesite, grey, mass, few anygs at 198'											
	208	END											
		Core racked and stored at Line 6 E on road through property.											



EM. 6-1168

LANGRISH LIMITED,

DIAMOND DRILL RECORD

NAME OF PROPERTY GOLD RIDGE MINES INC.
 HOLE NO. S-4 LENGTH 236'
 LOCATION SUMMERS TWP., BEARDMORE, AREA. CI - 350543
 LATITUDE 30 S DEPARTURE 5100 E (1974 Grid)
 ELEVATION _____ AZIMUTH 330° DIP -45°
 STARTED JULY 13, 1975 FINISHED JULY 20, 1975.

FOOTAGE	DIP	AZIMUTH	FOOTAGE	DIP	AZIMUTH

HOLE NO. S-4 SHEET NO. 1

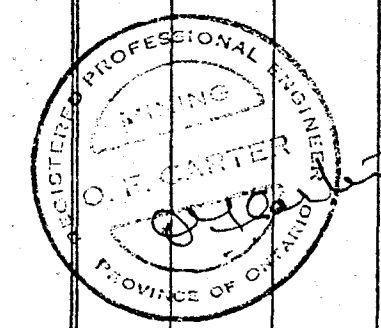
REMARKS _____

LOGGED BY O. F. CARTER

EM. 6-1168

LANGRIDGE LIMITED,

FOOTAGE		DESCRIPTION	SAMPLE			ASSAYS						
FROM	TO		NO.	% SULPHIDES	FOOTAGE			%	%	OZ/TON	OZ/TON	
					FROM	TO	TOTAL					
0	8	Casing										
8	213	Andesite, mdk., chlor, sh'd, calc str., lighter and more mass 63 - 78' 110 - 130' - Many dry wh. qtz. str. in granular facies of rock. 150' - Magnetite specks and str. for 3"									Au	
213	227	Vein zone - 70% qtz., wh. to grey, 3 - 4% As in crystals and blebs	0926		213	217					.04	
			0927		217	221					.01	
			0928		221	225					.01	
			0929		225	227					Tr.	
227	236	Grey wacke type rock, grey, uniform indef. bedding.										
	236	END										
		Core racked and stored at Line 6 E on road through property.										



DIAMOND DRILL RECORD

NAME OF PROPERTY GOLD RIDGE MINES INC.
 HOLE NO. S - 5 LENGTH 274'
 LOCATION SUMMERS TWP. BEARDMORE AREA, ONTARIO CI - 350543
 LATITUDE 30 S DEPARTURE 5000 E (1974 Grid)
 ELEVATION _____ AZIMUTH 330° DIP -45°
 STARTED July 21, 1975 FINISHED JULY 26, 1975.

FOOTAGE	DIP	AZIMUTH	FOOTAGE	DIP	AZIMUTH

HOLE NO. S - 5 SHEET NO. 1

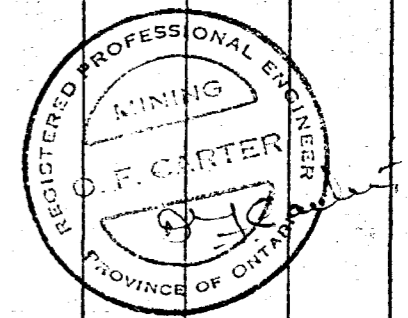
REMARKS _____

LOGGED BY O. F. CARTER

EM. 6-1168

LANGR LIMITED,

FOOTAGE		DESCRIPTION	SAMPLE				ASSAYS					
FROM	TO		NO.	SULPHIDES	FOOTAGE			%	%	OZ/TON	OZ/TON	
					FROM	TO	TOTAL					
0	10	Casing										
10	228	Andesite, chlor, dark, sh'd, calc. strcs., Few anygs. 22' - 5" dry with qtz. calc 45°. 26' - 6" " " " " " " 108 - 116" - 25-30% wh. qtz. calc, chlor, dry grey and mass after 185'.										
228	243	Vein, 90% cherty qtz. carb, 3-4% arseno- pyrite, some pyr.	0930		228	232	4.0			.06		
			0931		232	236	4.0			.06		
			0932		236	240	4.0			.02		
			0933		240	243	3.0			Tr		
243	274	Andesite, grey to greenish, consid. dry qtz. 265.5 - 269 - Qtz. carb. breccia zone, 60°, no min.										
	274	END										
		Core racked and stored at Line 6 E on road through property.										



DIAMOND DRILL RECORD

NAME OF PROPERTY GOLD RIDGE MINES INC.
 HOLE NO. S - 6 LENGTH 254'
 LOCATION SUMMERS TOWNSHIP, BEARDMORE, AREA, ONTARIO CI -350543
 LATITUDE 00 DEPARTURE 4900 E (1974 Grid)
 ELEVATION _____ AZIMUTH 330° DIP -45°
 STARTED JULY 29, 1975 FINISHED August 2, 1975

FOOTAGE	DIP	AZIMUTH	FOOTAGE	DIP	AZIMUTH

HOLE NO. S - 6 SHEET NO. 1

REMARKS _____

LOGGED BY O. F. CARTER

FOOTAGE		DESCRIPTION	SAMPLE			ASSAYS					
FROM	TO		NO.	% SULPHIDES	FOOTAGE		%	%	OZ/TON	OZ/TON	
					FROM	TO	TOTAL				
0	5	Casing									
5	94	Andesite, dark, chlor, much calc in str's on shearing, amyg									
94	112	Andesite, grey, more mass, numerous calc qtz. str's @ 45°, dry									
112	125	Andesite, sh'd, dark, chlor, calc str's.									
125	170	Andesite, med, greenish, lt, granular, dry qtz. calc str's.									
170	213	Grades back to mdk. chlor									
213	216	Vein, 80% qtz. carb. scatt pyr and po, 45°.	0939		213	216	3.0			Tr	
216	228	Andesite, grey, mass									
228	230	Vein, 30 - 40% dark qtz. carb, sparse pyr. 45°.	0940		228	230	2.0			Tr	
230	254	Andesite, dark, chlor, sh'd, calc, str's. on shearing.									
	254	END.									
		Core racked and stored at Line 6 E on road through property.									

EM, 6-1168

LANGRIM LIMITED,



DIAMOND DRILL RECORD

NAME OF PROPERTY Gold Ridge Mines Inc.
 HOLE NO. S - 7 LENGTH 246'
 LOCATION SUMMERS TWP., BEARDMORE, ONTARIO - CL - 350543
 LATITUDE 35 N DEPARTURE 4800 E (1974 GRID)
 ELEVATION _____ AZIMUTH _____ DIP -45°
 STARTED August 3, 1975 FINISHED August 6, 1975

FOOTAGE	DIP	AZIMUTH	FOOTAGE	DIP	AZIMUTH

HOLE NO. S - 7 SHEET NO. 1

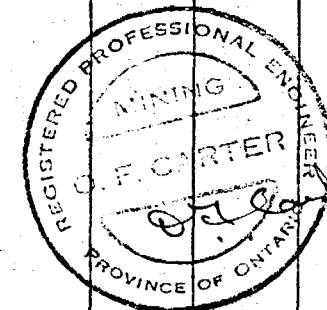
REMARKS _____

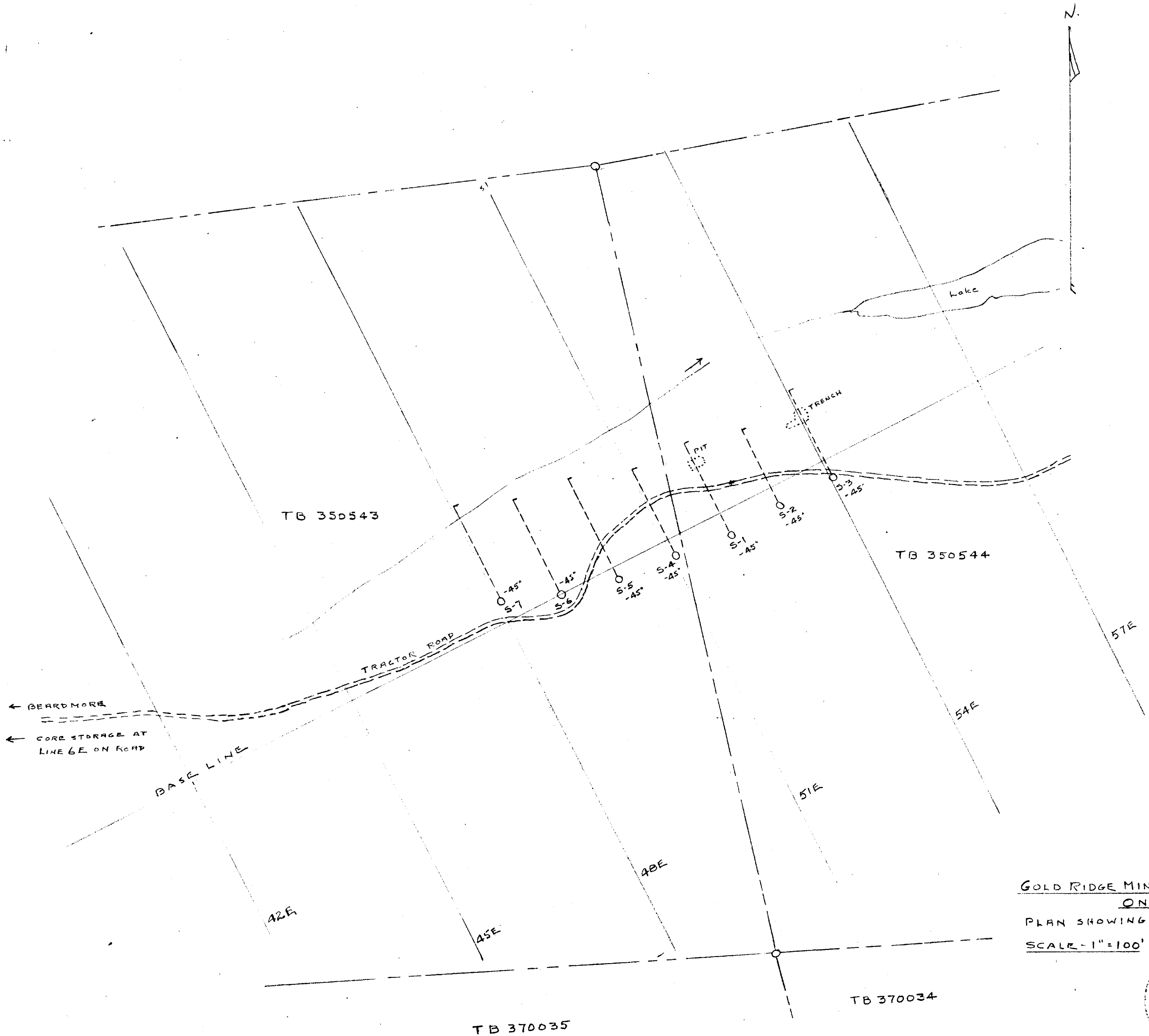
LOGGED BY O. F. CARTER

FOOTAGE		DESCRIPTION	SAMPLE				ASSAYS						
FROM	TO		NO.	SULPHIDES	FOOTAGE			%	%	OZ/TON	OZ/TON		
					FROM	TO	TOTAL						
0	10	Casing											
10	60	Andesite, chlor, dark, sh'd 45°, much calcite on shearing.											
60	160	Grades to more mass, lighter, calcite str. and locally calcite flakes.											
160	204.5	Andesite, chlor, banded, dark, calc. str.											
204.5	206	Vein zone, indef., 20% qtz, carb, minor po and pyr, 45°.	0938		204.5	206	1.5'					Trace	
2-6	246	Andesite, chlor, well banded, many carb. str. on shearing.											
	246	END OF HOLE											
		Core racked and stored at Line 6E on road through claims.											

EM. 6-1168

LANGR LIMITED,





GOLD RIDGE MINES INC. - SUMMERS TWP.
 ONTARIO
 PLAN SHOWING 1975 DIAMOND DRILLING
 SCALE - 1" = 100'
 SEPT. 1975

