

42E13SE0015 31 KABY LAKE

010

Diamond Drilling

Township of KABY LAKE (Elmhirst Township) Report N<sup>o</sup> 31

Work performed by: New Metalore Mining Co. Limited

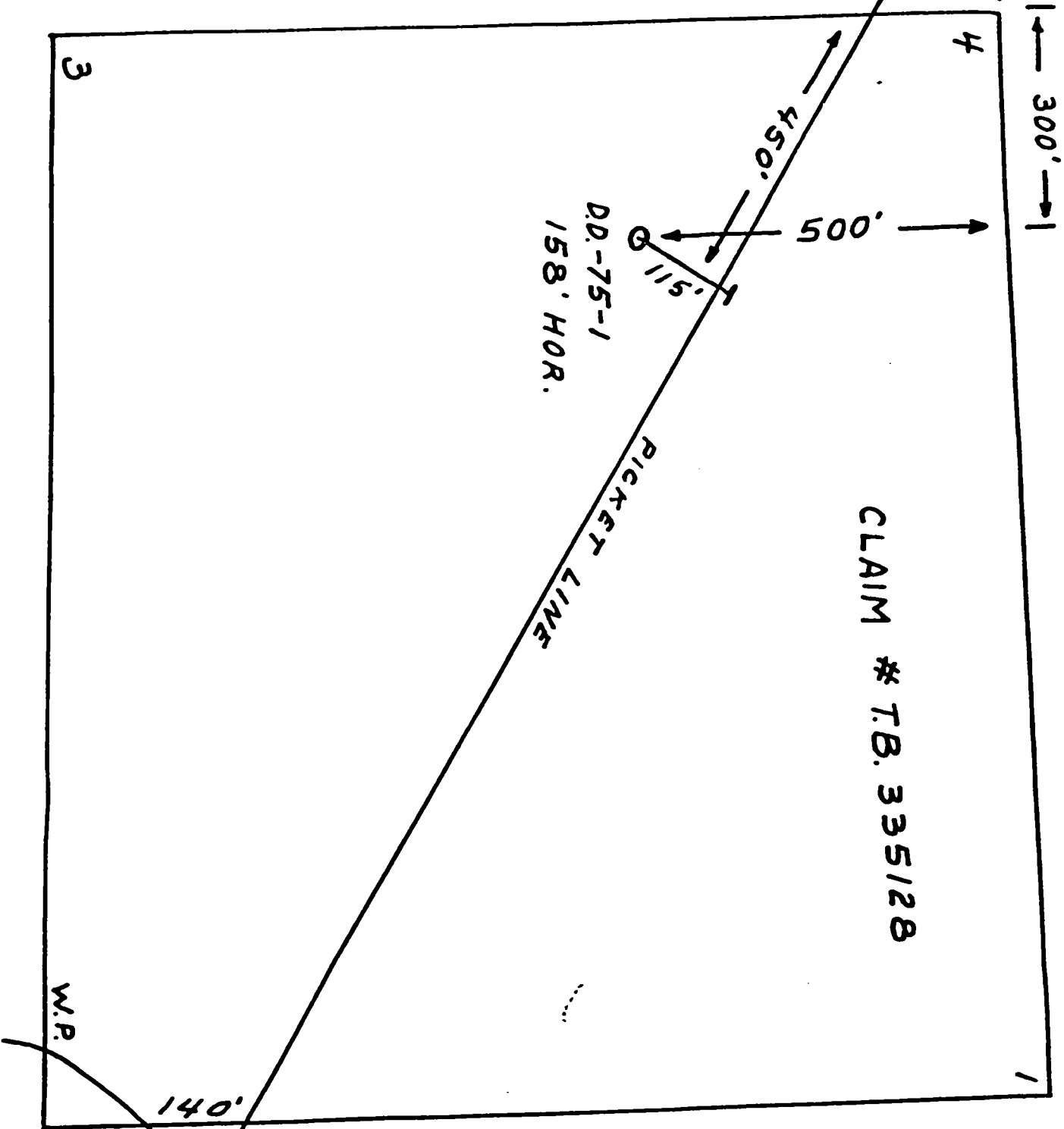
Claim N <sup>o</sup>	Hole N <sup>o</sup>	Footage	Date	Note
TB 335128	NM-75-1	224.0'	Oct/75	(1)
	78-1	130.0'	Aug/78	(2) (3)
	78-2	185.0'	Sept/78	(3)
	78-3	142.0'	Sept/78	(3)
	78-4	207.0'	Sept/78	(3)
	78-5	190.0'	Sept/78	(3)
	78-6	153.5'	Oct/78	(3)
	78-7	260.0'	Oct/78	(3)
	78-8	195.0'	Oct/78	(3)
	78-9	213.0'	Oct/78	(3)
	78-10	239.0'	Cct/78	(3)
	78-11	357.0'	Nov/78	(3)
	78-8X	302.0'	Oct/78	(3)

Notes:

- (1) #77-76
- (2) #103-78
- (3) #15-79

NE METALORE  
MINING (C.L.D.)

# 77-76  
KABY LAKE  
(ELMHIRST TWP)



CLAIM # T.B. 335128

RICKET LINE

DD-75-1  
158' HOR.

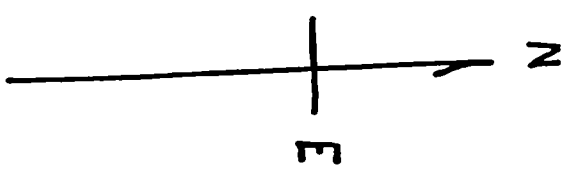
500'

450'

160'

300'

140'



SCALE:



1 INCH = 200 FEET

DIAMOND  
DRILLING  
SKETCH

NM-75-1

224 FEET AXT

ELMHIRST

TWP.

ONTARIO

W.P. 1  
W.P. 2  
WILKINSON  
LAKE

DRILLED

NOVEMBER.

1975

*Steve Jones*



**Diamond  
Drilling**

Log AXT 1 1/2 inches diameter

Drilling Company <b>Rickaby Mines Limited (R. J. Ball)</b>	Collar Elevation	Bearing of hole from true North <b>320</b>	Total Footage <b>224</b>	Dip of Hole at Collar <b>45</b>	Location of hole in relation to a fixed point on the claim. <b>300 ft. East, 500 ft. South, Claim Post #4, 335128</b>	Map Reference No. <b>Mcpnar Geo. Elmirst Twp. Lot Con or Lat and Long)</b>	Claim No. <b>TB335128</b>
Date Hole Started <b>October 21, 1975</b>	Date Completed <b>November 3, 1975</b>	Date Logged <b>3/11/75</b>	Logged by <b>George W. Chillian</b>				
Exploration Co., Owner or Optionee <b>New Metalore Mining Co. Ltd.</b>	Date Submitted <b>18/6/76</b>	Submitted by (Signature) <i>George W. Chillian</i>			Property Name <b>Wilkinson Lake</b>		

From	To	Rock Type	Description Colour, grain size, texture, minerals, alteration, etc.	Planar Feature Angle	Core Specimen Footage 1	Your Sample No.	Sample From	Footage To	Sample Length	Assays 1
0	19	Overburden	Sand, gravel, boulders.							
19	45	Dacite	Agglomerate. Fragments up to 3 inches, fused into massive, gray to gray/blue matrix. Mineralization: Occasional fine pyrite (cubes) in hair-line cross fractures from 45 to 1350 to core angle.							
45	84	Dacite	Porphyritic. Abundant rectangular feldspar phenocrysts up to 1/4 inch in size in massive gray matrix to 74 ft. Mineralization: Pyrite in cross fractures (as above) to 73 ft; then irregular chalcopyrite and unassociated pyrrhotite in cross fractures to 84 ft. Coarse pyrrhotite in 1/4 inch quartz/calcite stringer at 74 ft.							
84	174	Rhyolite	Variously porphyritic and cherty. Large whitish phenocrysts in gray matrix 104 - 117. Fine phenocrysts after 117. Gradually darker in colour. Still massive rock. Mineralization: Coarse chalco & pyrrho associated with chlorite in hard, cherty rock at 84 ft. 6 inches. Pyrite and pyrrho again in cross fractures 85 to 92 and platy pyrite from 92 gradually diminishing in occurrence.							
174	224	Dacite	Agglomerate. Abundant irregular shaped fragments from less than 1 inch to 12 inches and over. Variously bright coloured (maroon, purple, blue, green etc.) Some shearing. Core recovery 98%. Drill foreman, Rod LeTang.							



AMALGAMATED DRILLING LTD  
THUNDERBAY  
CORE SIZE 1 3/4"

Drilling Company: **AMALGAMATED DRILLING LTD**  
 Date Hole Started: **AUG 16, 78** Date Completed: **AUG 28, 78**  
 Exploration Co., Owner or Optionee: **METALLIC RESOURCES LTD**  
 Collar Elevation: \_\_\_\_\_ Boring of hole from (use N.O.P.): **350'** Total Footage: **130**  
 Date Logged: **AUG 29** Logged by: **G.E. W. CHILWAL** Dip of Hole at Collar: **0**  
 Date Submitted: \_\_\_\_\_ Submitted by (Signature): **Dr. G. W. Chilwal** Dip of Hole at \_\_\_\_\_  
 Property Name: **WILKINSON LAKE**

Fill in on every page  
 Hole No. **78-1** Page No. **1**  
 Claim No. **FB 355128**

From	To	Rock Type	Description Colour, grain size, texture, minerals, alteration, etc.	Planar Feature Angle	Core Specimen Footage †	Your Sample No.	Sample Footage From	Sample Footage To	Sample Length	Assays †
0	14	BULLEDS	CASING							
14	83	DALITE	TUFF AND AGGLOMERATE, SECTIONS OF LARGE FRAGMENTS (TO 3") REDDISH IN MATRIX, CHECKITE & GLASSY PINK CARBONATE TO 81 FELOSPAR "PHENOCRYSTS" (FRAGMENTS) TO 42, DISSEMINATED FINE PYRITE THROUGHOUT.							
83	117	SHEAR ZONE	SCHISTOSE-SERICITE AND GREENHATED SKINNY PARTICULARLY CLOSER TO QUARTZ VEIN, PY							
96	103 1/2	QUARTZ VEIN	VEIN OF MOSTLY BROWN, LITTLE COARSE PYRITE AND SOME CHECKITE, 100-101 TANK ZINC, CHALCO, PYRITE AND MINOR GALENA, 101-102 FINE PYRITE IN SERICITE SLITS							
117	130	DALITE	COARSE GRAIN INTERMEDIATE SIMILAR TO 14-83							

† Additional credit available. See Assessment Work Regulations.





Drilling Company <b>Amalgamated</b>	Collar Elevation	Bearing of hole from True North	Total Footage	Dip of Hole at Collar	Location of hole in relation to a fixed point on the claim.	Map Reference No.	Claim No.
Date Hole Started	Date Completed	Date Logged	142	40°	780 S., 700 W., #1 Post Claim 335128. Also 132 S, 18 E, Base Line	Location (Twp., Lot, Con. or Lat. and Long)	TB 335128
Exploration Co., Owner or Optionee	Sept: 78	Date Submitted	Logged by <b>G. W. Chillian</b>	Submitted by (Signature)		Property Name	Elmhirst Twp. (Kaby Lake Area)
<b>Metalore Resources Ltd</b>						<b>Wilkinson Lake</b>	

From	To	Rock Type	Description Colour, grain size, texture, minerals, alteration, etc.	Planar Feature Angle †	Core Specimen Footage †	Your Sample No.	Sample From	Footage To	Sample Length	Assays †		
										Au	Au	Ag
0	15	Casing	Boulders									
15	82	Dacite	Tuff (fine grained) and various agglomerate. Feldspar "phenocrysts" prominent 29 - 45									
82	102	Schist	Heavy sericite 96 - 101.5. Qtz carb veins 95 - 96 & 100 - 100.25									
102	122	Quartz vein	Schist 104-105. Brecciated with sericite & carb stringers 114-116.									
			Sample description: Nearly barren. 2 1/2 ft. cumulative schist with py Mixed schist & qtz 1st 3 ft nicely mineralized cu & pb, 1st ft fine white py in epidote Some vuggy sericite with py & sparse pb. One stringer coarse py									
122	132	Schist	Some "stray quartz" 127-128.25. Few inches barren, white qtz inclusions in chlorite two or three places									
132	142	Dacite	Medium grained, massive, few 1/8 to 1/4 inch qtz stringers. Feldspar fragments absent.									
142			End hole. Core recovery excellent. Core size 1 21/32 (BQ)									
Note: collars of holes 1 & 2 making water during drilling of this hole.												

† Additional credit available. See Assessment Work Regulations



Drilling Company <b>Amalgamated</b>	Thunder Bay	Collar Elevation	Bearing of hole from true North	Total Footage	Dip of Hole at Collar	Location of hole in relation to a fixed point on the claim.	Map Reference No.	Claim No.
Date Hole Started	Date Completed	Date Logged	Logged by					
	Sept 1978	Date Submitted	Submitted by (Signature)					
Exploration Co., Owner or Optionee	Metalore Resources Ltd		G. W. Chillian		780 S & 700 W #1 Post Claim 335128 Also 18 E & 132 S of BL		Location (Twp., Lot, Con. or Lat. and Long.) Elmhirst Twp (Kaby Lake Area)	
Property Name			Wilkinson Lake					

From	To	Rock Type	Description Colour, grain size, texture, minerals, alteration, etc.	Planar Feature Angle *	Core Specimen Footage †	Your Sample No.	Sample Footage From	To	Sample Length	Au	Ag
0	14	Casing	Boulders. Casing left standing in hole.								
14	116	Dacite	Tuff and various agglomerate. Coarse fragments reboiled in Matrix 37-70. Feldspar crystals or "phenocrysts" 14-26								
		Carbonate Zone	83-108. Bleached. More epidote and abundant py clustered around epidote. Some chlorite alteration.								
116	143.8	Schist Zone	Sericite/chlorite								
		Quartz leader	118-119.25 fair coarse py & threads black mineral (possibly tourmaline) & little chlorite.								
123.5	134.5	Dacite	"Stray (free) quartz" 120-120.3 with 1/4 inch chlorite both walls.								
			Horse of massive dacite with heavy chlorite alteration & qtz carb stringers. Schist, considerable "reboiled" bluish qtz stringers with fine py and heavy heavy sericite & bluish mineral in slips (moly?) to 143.8.								
			Sample: 1/4 schist, well mineralized with py & 1/4 reboild qtz stringers . . . . .								
			Sample: Barren qtz, except for little coarse py at 147 . . . . .								
			Milky white and barren, except for coarse py at 147 & 156.5.								
143.8	164	Quartz vein	Abundant carbonate 158-164, py with pb 160-164.								
			Sample: Quartz with carb & some py & pb 161.5-164 (as above) . . . . .								
164	178	Schist Zone	Sericite/chlorite.								
		Dacite	Horse of massive, chloritic dacite, some py, feldspar remnants. 6 inch grey qtz stringer with sparse py 170-170.5 (probably carries but too small to assay).								
178	192.5	Quartz vein	Sharply defined walls. Little coarse pb, cu, zn & py throughout. (This is a good looking section and expected to assay better than resulted)								
			Sample: Quartz with carb & some py & pb 161.5-164 (as above) . . . . .								
192.5	198	Schist	Sericite/chlorite.								
198	198	Dacite	Massive, fine grained, chloritic.								
207			End hole. Core recovery excellent. Core size 1 21/32 (BQ)								
			Casing left standing in hole.								

\* Additional credit available. See Assessment Work Regulations







Drilling Company	Amalgamated	Thunder Bay	Collar Elevation	Bearing of hole from true North	Total Footage	Dip of Hole at Collar	Location of hole in relation to a fixed point on the claim.	Map Reference No.	Claim No.	Property Name
				300	153.5	40	840 feet S & 610 W of #1 post of claim 335128. Also 135 S & 118 E on Grid		335128	Wilkinson Lake
Date Hole Started		Date Completed	Date Logged	Logged by						
		Oct 78		G. W. Chillian						
Exploration Co., Owner or Optionee		Date Submitted	Submitted by (Signature)							
Metalore Resources Ltd										
Footage From	To	Rock Type	Description Colour, grain size, texture, minerals, alteration, etc.							
0	23	Boulders	Casing							
23	107	Dacite	Tuff and various agglomerate, mainly massive, fine grained, with occasional light shearing and occasional sparse disseminated py. "Carbonate zone", cherty section with blue qtz and carbonate stringers to 1/2 inch at 76-90.							
107	108	Schist	Chlorite/sericite, very soft & chloritic lower part, possibly open seam.							
108	113	Quartz vein	Lit par lit quartz & chlorite schist. Qtz varies from dark, smokey, flakey variety to white with some py. Schist carries py							
113	137.5	Schist	Chlorite/sericite, some crenulated Quartz: 1 1/4 inches at 131.5 & 4 inches at 132, & few ancillary stringers. VISIBLE GOLD: several specks and clusters, some associated with cu 132-132.25 Sample: As described above, 1/2 schist & 1/2 qtz . . . . . Quartz carbonate vein, pretty barren at 135-136.							
137.5	153.5	Dacite	Tuff, feldspar "phenocrysts" absent.							
153.5			End hole. Core recovery excellent. Hole size 1 21/32 (BG) Note: holes to west (1 & 2) making water during drilling of holes 5 & 6.							
Core Specimen Footage †	Your Sample No.	Sample From	Sample To	Sample Length	Au	Ag	Assays †			
	78-6-1	108	110	2	0.27	1.11				
	78-6-2	110	113	3	0.03	0.37				
	78-6-3	131	132.25	1.25	0.54	0.76				



Drilling Company		Amalgamated - Thunder Bay		Collar Elevation	Bearing of hole from true North	Total Footage	Dip of Hole at		Location of hole in relation to a fixed point on the claim.	Map Reference No.	Claim No. TB. 335128	Location (Twp., Lot, Con. or Lat. and Long)	Property Name	Assays †								
Date Hole Started	Date Completed	Date Logged	Logged by	Collar	Fl.	Fl.	Fl.															
Exploration Co., Owner or Optionee													Submitted by (Signature)		G. W. Chillian		860 ft S & 645 ft W #1 post claim 335128. Also 188 S & 100 E on Grid		Elmhurst Twp, Ontario (Kaby Lake Area)		Wilkinson Lake	
Metalore Resources Ltd													Submitted by (Signature)		G. W. Chillian							
Footage		Rock Type	Description	Colour, grain size, texture, minerals, alteration, etc.		Planner Failure Angle	Core Specimen Footage †	Your Sample No.	Sample From	Footage To	Sample Length	Assays †	Assays †									
From	To			From	To									From	To	From	To					
0	23	Boulders	Casing						feet	feet	feet	Ag	Ag									
23	182	Dacite	Tuff and various agglomerate. massive and fine grained. Greenish hue 23-67. Bleached 57.5-58. Grey hue and increasingly carbonated with few scattered sections py clusters 67-90. One inch heavy pyrrhotite at 95. Carbonated again 155-161. Shearing from 178.																			
182	188	Schist	Sericite/chlorite. Qtz, "Hangingwall veinlet" 184-185. Dark, smokey, flakey, "cherty" with fair fine pyrite. Sample is about 1/2 schist with py . . . . .					78-7-2	183.5	185	1.5	0.12	0.49									
188	235	Quartz vein	Samples: Smokey, sugary, flakey with traces light green chlorite, fine py and 2 feet chlorite schist included . . . . . Completely barren, milk white, partly vitreous, little sericite latter part . . . . . Smokey colour, lots of vuggy sericite seams & fair py throughout . . . . . Same as 78-7-5 . . . . . Translucent, glassy, brittle, barren except for sparse sericite vugs with sparse fine py near end of sample . . . . . Traces light green chlorite in white qtz and sparse py. Less than one foot of schist inclusions (mostly sericite) . . . . . All qtz. Mostly barren, white, sugary qtz, except little smokey & py one place . . . . .					78-7-3	187.8	194.8	7	0.04										
								78-7-4	194.8	200	5.25	Tr										
								78-7-5	200	209	9	0.05										
								78-7-6	209	215	6	0.01										
								78-7-7	215	223	8	Tr										
								78-7-1	223	231	8	0.04										
235	260	Dacite	Tuff. Sheared from footwall of qtz (but not intensely developed to schist) to 244. Then massive, fine grained, fairly basic and unmineralized. Remnants of feldspar "phenocrysts" apparent. . . . .					78-7-8	231	235	4	Tr										
260			End hole. Core recovery excellent. Core size 1 21/32 (BQ)																			

† Additional credits available. See Assessment Work Regulations



Drilling Company <b>Amalgamated - Thunder Bay</b>	Collar Elevation	Bearing of hole from true North	Total Footage	Dip of Hole at Collar	Location of hole in relation to a fixed point on the claim.	Map Reference No.	Claim No.
Date Hole Started	Date Completed	Date Logged	300	191	745 feet S & 790 feet W #1 post claim 335128.	Location (Twp., Lot Con. or Lat. and Long.)	TB335128
Exploration Co., Owner or Optionee	Date Submitted	Logged by	195	38	Also 128 S & 83 W on Grid	Elmhirst Twp., Ontario Kaby Lake Area	
		G. W. Chillian					
Metalore Resources Ltd		Submitted by (Signature)				Property Name	
						Wilkinson Lake	

Footage From	To	Rock Type	Description	Planar Feature Any?	Core Specimen Footage †	Your Sample No.	Sample Footage From	To	Sample Length	Au	Assays †
0	13	Boulders	Casing								
13	104	Dacite	Tuff and various agglomerate, mostly fine grained. Feldspar "phenocrysts" & fragments prominent to 83. Bleached and carbonated 26-35. Light shearing & more chloritic 98-104.								
104	119	Schist	Sericite/chlorite. 2 inch smokey, blue qtz stringer at 105. 25% smokey, blue qtz boiled in schist with fine py 108-115 (probably carries). qtz/carbonate vein, barren 113-114. chlorite predominate 116-118. Sericite predominate 118-119. Sample: 1/3rd qtz stringers, 2/3 schist with py.			78-8-4	111	115.5	4.5	0.05	
119	156	Quartz	Vein and partly "free" qtz. Highly brecciated 119-120. Smokey with some brecciation 120-122. Irregular veinlet or seam of pyrrhotite up to 4 inch at 137. Heavy chlorite seam at high angle to core 141-142. Unmineralized chlorite schist with biotite 146-147. Traces light green chlorite and variously light smokey hue. Whole vein conspicuously barren, "hungry".			78-8-2	118	122	4	0.01	
			Sample: 1 foot sericite schist, balance qtz with chlorite & sparse py			78-8-1	122	126	4	0.01	
			" Half dark, smokey qtz, but barren			78-8-3	126	131	5	0.04	
			" Half of sample contains vuggy sericite seams with some medium size py								
156	161	Schist	Sericite/chlorite/biotite. Heavy biotite 159-160. 2 inch calcite stringer with moderate, coarse chalc stringer and associated pyrrhotite at 160.								
161	183	Dacite	Tuff. Remnants of feldspar "fragments" 170-183. Cherty and brightly coloured red to yellow hue at chilled contact with dyke 182.8-183.								
183	192	Basic Dyke	Coarse grained, looks like diabase, but few stringer threads of qtz. Fault gouge of four inch qtz carbonate vein enclosing rock fragments at contact 192.								
192	195	Dacite	Feldspar "phenocrysts" prominent. Brightly coloured again at chilled contact with dyke at 192.								
195		End Hole	Note: Collars of holes 3 & 4 making water during drilling of this hole.								

† For features such as foliation, bedding, schistosity measured from the long axis of the core

† Additional credit available. See Assessment Worksheet Instructions



Drilling Company <b>Amalgamated - Thunder Bay</b>	Collar Elevation	Bearing of hole from true North	Total Footage	Dip of Hole at Collar	Location of hole in relation to a fixed point on the claim.	Map Reference No.	Claim No.
Date Hole Started <b>Oct 1978</b>	Date Completed <b>Oct 1978</b>	Date Logged	<b>213</b>	<b>63</b>	<b>745 S &amp; 790 W #1 Post claim 335128.</b>	<b>78-9</b>	<b>TB 335128</b>
Exploration Co., Owner or Optionee <b>Metalore Resources Ltd</b>	Date Submitted	Logged by <b>G. W. Chillian</b>	Submitted by (Signature)		<b>Also 128 S &amp; 83 W BL</b>	Location (Twp., Lot, Con. or Lat. and Long.) <b>Elmhirst Twp (Kaby Lake Area)</b>	
Property Name <b>Wilkinson Lake</b>							

Footage From	To	Rock Type	Description Colour, grain size, texture, minerals, alteration, etc.	Planner Feature Angle °	Core Specimen Footage †	Your Sample No.	Sample Footage		Sample Length	Assays †	
							From	To		Au	Ag
0	12	Boulders	Casing								
12	137	Dacite	Fine grained, massive, dark grey, feldspar "phenocrysts" throughout.								
137	155.5	Schist	Sericite/chlorite. Quartz: barren "stray quartz" with chlorite 145-148. Half barren "stray quartz" and half chlorite 148-155.5.								
155.5	178	Quartz vein	Milky white, barren, except for occasional, sparse threads py								
178	197	Schist	Sericite/chlorite. Heavy sericite 178-179 Quartz: Half barren qtz 179-182; All barren dtz 182-187; half barren qtz 187-197.								
197	213	Dacite	Massive, fine grained. Little shearing 197-199. Abundant feldspar "phenocrysts"								
213			End hole.								



Drilling Company		Amalgamated - Thunder Bay		Collar Elevation	Bearing of hole from true North	Total Footage	Dip of Hole at Collar		Location of hole in relation to a fixed point on the claim.		Map Reference No.	Claim No.						
Date Hole Started	Date Completed	Date Logged	Logged by	Date Submitted	Submitted by (Signature)		Fi.	68	#1 post claim 335128. Also 150 S & 168 W on Grid		Location (Twp., Lot, Con. or Lit. and Long.)	335128						
Exploration Co., Owner or Optionee		Metalore Resources Ltd		G. W. Chillian		Elmhurst Twp., Ontario (Kaby Lake Area claim map)		Property Name		Wilkinson Lake								
Footage		Rock Type		Description Colour, grain size, texture, minerals, alteration, etc.														
From	To	Boulders		Casing.		Planar Feature Angle		Core Specimen Footage †		Your Sample No.	Sample Footage From	To	Sample Length	Assays †				
0	22													Ag				
22	149	Dacite		Tuff. Fine grained, massive. Feldspar "phenocrysts" prominent to 116. Carbonate, epidote and py 79-84. Kynolithic texture (hard, light color) with fair py 98-149. Carbonate prominent 116-132. Schist 113-116.														
149	208	Schist		Sericitic/chlorite. 20% lenzy qtz or silicification in schist & fair py not associated with qtz in schist 149-153 & 168-174 (should assay). Chalco in 1/4 inch qtz stringer at 168. 3 inches qtz with fine py at 162, 10 inches qtz with fine py at 174 and another 10" qtz with fine py at 186.														
				Samples: 2/3 smokey, flakey qtz with fine py & 1/3 schist with py									78-10-3	180	182	2	0.05	
				Same as 78-10-1									78-10-1	198.5	201.5	3	0.01	
				Note: Should split more core this section.									78-10-2	201.5	204.5	3	1.92	
				Massive, fine grained, looks more like lava flow than tuff. Chloritic, barren and occasionally some shearing. Sericitic schist														
208	239	Dacite		215-216 & 226-227. 1/4 inch stringer of very good looking, flakey qtz, heavily mineralized with chalco at 227 (This would kick like a mule but too small for an assay to be significant).														
239				End hole. Core recovery excellent. Core size 1 21/32 (BQ)														



Drilling Company <b>Amalgamated - Thunder Bay</b>	Collar Elevation	Bearing of hole from True North	Total Footage	Dip of Hole at Collar	Location of hole in relation to a fixed point on the claim.	Map Reference No.	Hole No.	Page No.
Date Hole Started <b>November 1978</b>	Date Logged	Logged by <b>G. W. Chillian</b>	<b>357</b>	<b>68</b>	<b>935 feet S &amp; 580 feet W #1 post claim 335128</b>	<b>78-11</b>	<b>78-11</b>	<b>1</b>
Exploration Co., Owner or Optionee <b>Metalore Resources Ltd</b>	Date Submitted	Submitted by (Signature)			<b>Also 200 S &amp; 200 E on Grid</b>	<b>78335128</b>	<b>78335128</b>	
						<b>Location (Twp., Lot, Con. or Lat. and Long.) Elmhurst Twp., Ontario (Kaby Lake Area claim map)</b>		
						<b>Property Name Wilkinson Lake</b>		

Footage From	To	Rock Type	Description Colour, grain size, texture, minerals, alteration, etc.	Placer Feature Angle	Core Specimen Footage †	Your Sample No.	Sample Footage		Sample Length	Assays † Au
							From	To		
0	23	Boulders	Casing							
23	172	Dacite	Tuff. Hard, rhyolitic texture, fine grained, pale light grey to 135 and then gradually darker. Feldspar "phenocrysts" prominent throughout. Some biotite 156-162.							
172	204		Agglomerate. Carbonated and increasingly more epidote & random coarse py. Remnants of feldspar "phenocrysts" to 185.							
204	256		Tuff. Green colour, feldspar "phenocrysts" prominent, little shearing 253-256.							
256	288	Schist	Chlorite/sericite with chlorite predominating. Samples: All schist, well mineralized with "hybrid" bright, silvery py. . . . . Same as 78-11-1 (Note: material between 1 & 2 & 2 or 3 feet either side similar. Schist is silicious, "cherty" 261-262. Smoky, flakey, sugary qtz (vein type), then 1 foot schist (as above), then 5 inches white, sugary qtz. (Very fine, sparse py in both qtz sections)			78-11-1 78-11-2 78-11-3	256 259 275	258 261.5 277	2 2.5 2	Ty Ty 0.01
288	357	Dacite	Tuff. Occasional remnants feldspar "phenocrysts". Occasional light shearing for a few inches that is slightly chloritic. 1/8 inch seam pyrrhotite with sparse associated py in 1/4 inch silicified band on wall of few inches chloritic shearing at 348 and 349.							
357			End hole.							

† Additional credit available. See Assessment Work Regulations.



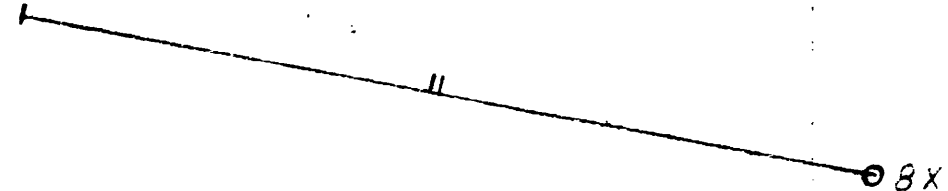
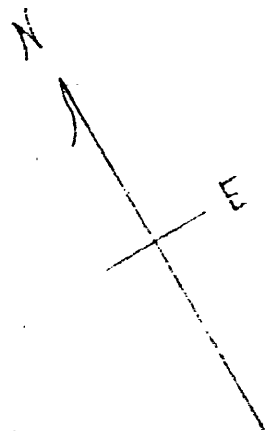
Drilling Company <b>Amalgamated - Thunder Bay</b>	Collar Elevation	Bearing of hole from true North <b>310°</b>	Total Footage <b>302</b>	Dip of Hole at Collar <b>45°</b>	Location of hole in relation to a fixed point on the claim. <b>665 feet S &amp; 190 W of #1 post claim 335128. Also 200 feet N &amp; 415 E on grid.</b>	Map Reference No. <b>TB335128</b>	Property Name <b>Wilkinson Lake</b>
Date Hole Started <b>Cct 1978</b>	Date Completed <b>Cct 1978</b>	Date Logged <b>G. W. Chillian</b>	Date Submitted <b>Submitted by (Signature)</b>	Location (Twp., Lot, Con. or Unit and Long.) <b>Elmhurst Twp., Ontario (Kaby Lake area claim map)</b>			

From	To	Rock Type	Description Colour, grain size, texture, minerals, alteration, etc.	Planar Feature Angle †	Core Specimen Footage †	Your Sample No.	Sample Footage		Assays †
							From	To	
0	38	Boulders	Casing						
38	137	Dacite	Tuff and various agglomerate. Mainly agglomerate with rock fragments to 70.5, occasional 1/8 to 1/2 inch qtz stringers, including stringer at 54 with chalc. 3 inch qtz stringer with sericite, some py in walls & chloritic inclusions at 70.5, fine grained, altered, chloritic. 1/2 inch pink calcite veinlet, 90° to core at 72. Mainly fine grained tuff, with occasional rock fragments & mainly massive, with feldspar "phenocrysts" prominent 70.5-137.						
137	140	Fault Zone	Brecciated milk white qtz with angular fragments completely altered to chlorite with some py mainly associated with chlorite. Interspacings of blue qtz stringers and sericite/chlorite schist (soapstone) and few threads fine py. (nothing cut for assay)						
140	302	Dacite	Tuff and various agglomerate. Shearing 175-176. 7% pyrrhotite & some cubic py in chloritic, brecciated section with biotite 209-210.5 (probable cause of magnetic anomaly). Lots of rock fragments again (agglomerate) with carbonate 236-257. More massive after 265.						
302			End hole. Core recovery excellent. Core size 1 21/32 (BO)						

† For features such as foliation, bedding, schistosity, measured from the long axis of the core

† Additional credits available. See Assessment Work Regulations

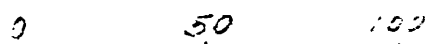
DRILL HOLE PLAN, 1978  
 METALORE RESOURCES LIMITED  
 ELMHIRST TOWNSHIP, ONTARIO  
 WILKINSON LAKE



100W      00      100E      200E      300E      400E

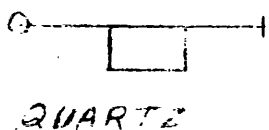
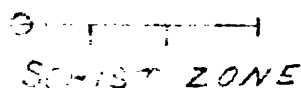
FROM THIS POINT, 525'E AND 980'N TO #1 POST 335128

SCALE:

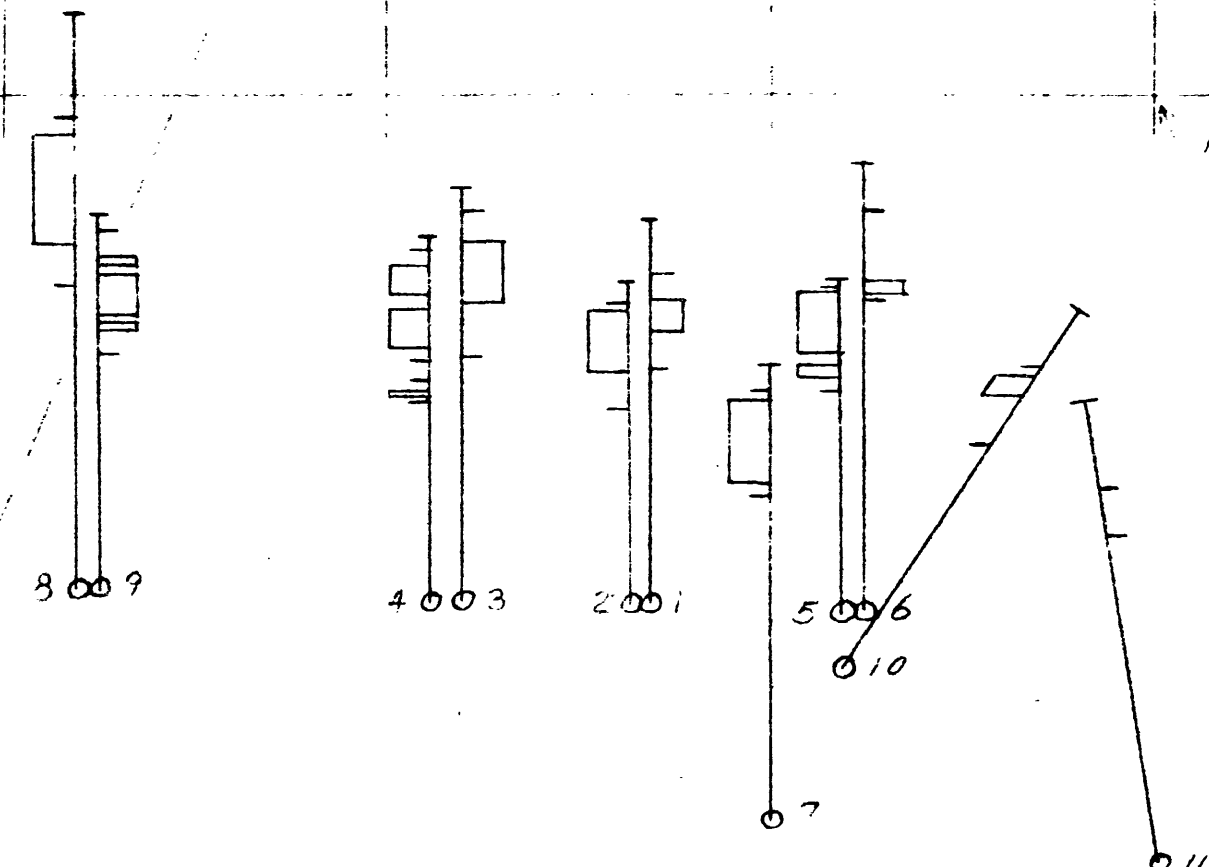


ONE INCH EQUALS 50 FEET

SYMBOLS:



TRAP ABUTE 9 ALL WIDE AREA 5000'



HOLE	AU ASSAY	WIDTH IN FEET	FOOTAGE
1.	0.20	4.5	99.5-104
2.	0.20	3.0	164-167
3.	0.44	14.0	107-121
4.	0.42	2.0	118-120
	0.10	5.0	161.5-166.5
	0.16	7.0	185.5-192.5
5.	0.43	8.75	133.5-142.25
	0.12	4.0	173-177
6.	0.27	2.0	108-110
	0.54	1.25	131-132.25
7.	0.12	1.5	183.5-185
10.	0.97	6.0	198.5-204.5



42E13SE0015 31 KABY LAKE

200

PROPOSED  
 79-1-60°

*G.W. Sullivan*  
 G.W. SULLIVAN, FEBRUARY 1977