



42G13SE0002 11 HANLAN

010

Diamond Drilling

Township of Hanlan

Report No: 11

Work performed by: L. G. St. Clair

Claim No	Hole No	Footage	Date	Note
SSM 56458	3	136'	Oct/58	
	4	128'	Oct/58	
	5	117'	Oct/58	
	6	126'	Oct/58	
	7	139'	Oct/58	
SSM 56459	8	138'	Oct/58	

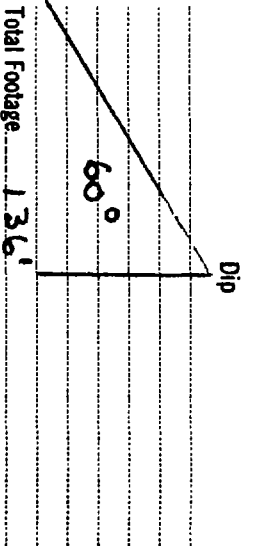
Notes:

DIAMOND DRILL RECORD

Hole No. 3 Sheet No. 1

Property SSM Claim # S6458.
 Location Natlan Township.

Latitude _____
 Departure _____
 Bearing South.



Elev. Collar _____
 Datum _____
 Date Started Oct 14, 1958
 Date Completed Oct 15, 1958
 Drilled by Cyrene Peince
 Logged by See S. Claim

Footage		Formation	Sample Number	Sample Footage	Sample Width	Gold Sample	Gold Sludge	Remarks
From	To							
<u>NO Drilling.</u>								
<u>0</u>	<u>38'</u>	<u>Calcite Gneiss</u>	<u>1</u>		<u>38</u>	<u>Te</u>	<u>-</u>	
<u>38'</u>	<u>70</u>	<u>Calcite - Quartz Fine Grained with Sulphides. Flaw Structure</u>	<u>2</u>		<u>32</u>	<u>-</u>	<u>-</u>	<u>Assay Ni: .5%</u>
<u>70</u>	<u>82'</u>	<u>Porous soft Calcite Spans. Evidence of Recrystallizing.</u>	<u>3</u>		<u>12</u>			<u>Assay Ni: .5%</u>
<u>82'</u>	<u>110</u>	<u>Hard Gneisses. with Sulphides.</u>	<u>4</u>		<u>28'</u>	<u>-</u>	<u>-</u>	
<u>110</u>	<u>128</u>	<u>Calcite - Quartz Fine Grained with Sulphides</u>	<u>5</u>		<u>18'</u>	<u>-</u>	<u>-</u>	
<u>128</u>	<u>130</u>	<u>Basalt - lumps.</u>	<u>6</u>		<u>2</u>	<u>Te</u>	<u>-</u>	
<u>130</u>	<u>136</u>	<u>Greenstone</u>	<u>7</u>		<u>6</u>	<u>-</u>	<u>-</u>	<u>17.5% Manganese & Titanium by assay</u>
		<u>End of hole</u>						

Date of Examination Oct 15, 1958

J. S. S. Claim

ASSESSMENT WORK

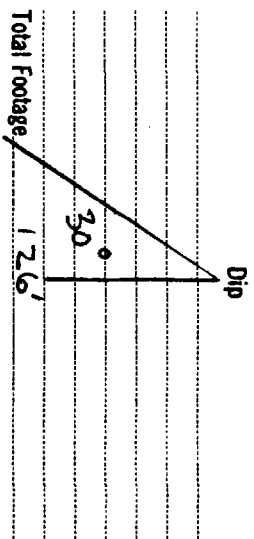
I-545

DIAMOND DRILL RECORD

Hole No. 6 Sheet No. 1

Property S.M. Claim # 6458
 Location HANNAH Town Ship

Latitude _____
 Departure _____
 Bearing N 15 E



Elev. Collar _____
 Datum _____
 Date Started Oct 20, 1958
 Date Completed Oct 21, 1958
 Drilled by Geo. W. Peck
 Logged by Geo. W. Peck

Footage		Formation	Sample Number	Sample Footage	Sample Width	Gold Sample	Gold Sludge	Remarks
From	To							
<u>N 60° W</u>	<u>0</u>							
	<u>7'</u>	<u>Pyritic Quartzite</u>	<u>1</u>		<u>7</u>	<u>-</u>	<u>-</u>	
	<u>7'</u>	<u>Sandstone soft Sedimentary</u>	<u>2</u>		<u>3</u>	<u>-</u>	<u>-</u>	
	<u>10</u>	<u>Basalt Burns View Fine stream - pyritic nodules</u>	<u>3</u>		<u>2</u>	<u>Fe</u>	<u>-</u>	<u>M. O'S QUARTZ DIAMONDS Titanium 11659A Magnesium 17057a.</u>
	<u>12</u>	<u>Flashed Fine stream</u>	<u>4</u>		<u>33</u>	<u>-</u>	<u>-</u>	
	<u>45</u>	<u>Porous soft Calcite beam</u>	<u>5</u>		<u>3</u>	<u>-</u>	<u>-</u>	<u>OSN.</u>
	<u>48</u>	<u>Quartz white & spars</u>	<u>6</u>		<u>22</u>	<u>-</u>	<u>-</u>	
	<u>70</u>	<u>Smoky to clean Quartz</u>	<u>7</u>		<u>35</u>	<u>TR</u>	<u>-</u>	
	<u>105</u>	<u>stream. Fe with sulphide Fe</u>	<u>8</u>		<u>21</u>	<u>-</u>	<u>-</u>	
	<u>126</u>							
		<u>End of hole</u>						

Date of Examination Oct 21, 1958

Geo. W. Peck

ASSESSMENT WORK

I 546

DIAMOND DRILL RECORD

Hole No. 7 Sheet No. 1

Property SSM Drain # 5645B
 Location Hanson Town Ship

Latitude _____
 Departure _____
 Bearing _____

Dip _____
 Vertical _____
 Total Footage 139'

Elev. Collar _____
 Datum _____
 Date Started Oct 23, 1958
 Date Completed Oct 24, 1958
 Drilled by August Reineck
 Logged by Lee St. John

No	Footage		Formation	Sample Number	Sample Footage	Sample Width	Gold Sample	Gold Sludge	Remarks
	From	To							
0	20	20	Granitic Fine Grained	1		20	-	-	
20	52	52	Quartz with Calcite Sulphides matrix.	2		32	-	-	OSNI
52	58	58	Porous. Same (value) & Spongy.	3		6	-	-	OSNI
58	111	111	Hard granites	4		53	FR	-	
111	114	114	Expansive Dolomite	5		3	TR	-	
114	117	117	Quartz with 1' Bands from clous	6		3			ASSAYING 1705/11 MANGANESE Cu of Ni: 05
117	139	139	Expansive	7		22	-	-	
			End of hole						

Date of Examination Oct 24, 1958

Lee St. John ASSESSMENT WORK
 I-546

DIAMOND DRILL RECORD

Hole No. 5 Sheet No. 1

Property SSM Claim # S6458

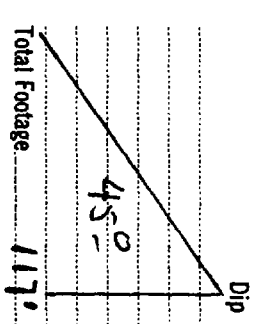
Location Haitian Claim # 1

Latitude

45°

Departure

Bearing NORTH



Elev. Collar _____
 Datum _____
 Date Started October 19, 1958
 Date Completed October 20, 1958
 Drilled by Eugene Reine
 Logged by See SS Claim

Footage		Formation	Sample Number	Sample Footage	Sample Width	Gold Sample	Gold Sludge	Remarks
From	To							
<u>No Logging</u>								
<u>0'</u>	<u>7'</u>	<u>Regmatite. Quartz + Calcite. Biotite etc.</u>	<u>1</u>		<u>7</u>	<u>—</u>		
<u>7'</u>	<u>8'</u>	<u>Basalt from thin fine grained. Auger hole with pyrites. Quartz.</u>	<u>2</u>		<u>1</u>	<u>Fe</u>		<u>Quartz No. 1 1-5% Magnetite 1-5% Titanium</u>
<u>8'</u>	<u>47'</u>	<u>Staged fine grained</u>	<u>3</u>		<u>39</u>	<u>—</u>		
<u>47'</u>	<u>70'</u>	<u>Quartz white with spore</u>	<u>4</u>		<u>.23</u>	<u>—</u>		
<u>70</u>	<u>111</u>	<u>Smoky fine grained quartz with small veins of calcite strewn</u>	<u>5</u>		<u>41</u>	<u>Fe</u>		
<u>111</u>	<u>117</u>	<u>Quartz with sulphidation</u>	<u>6</u>		<u>6</u>	<u>—</u>		
		<u>End of hole.</u>						

ASSESSMENT W Ont.

Date of Examination Oct 20, 1958

E. J. S. O'Connell

1515

POST 4

POST

D.H. 8

185'

20'

PICKET LINE N. 35° E.



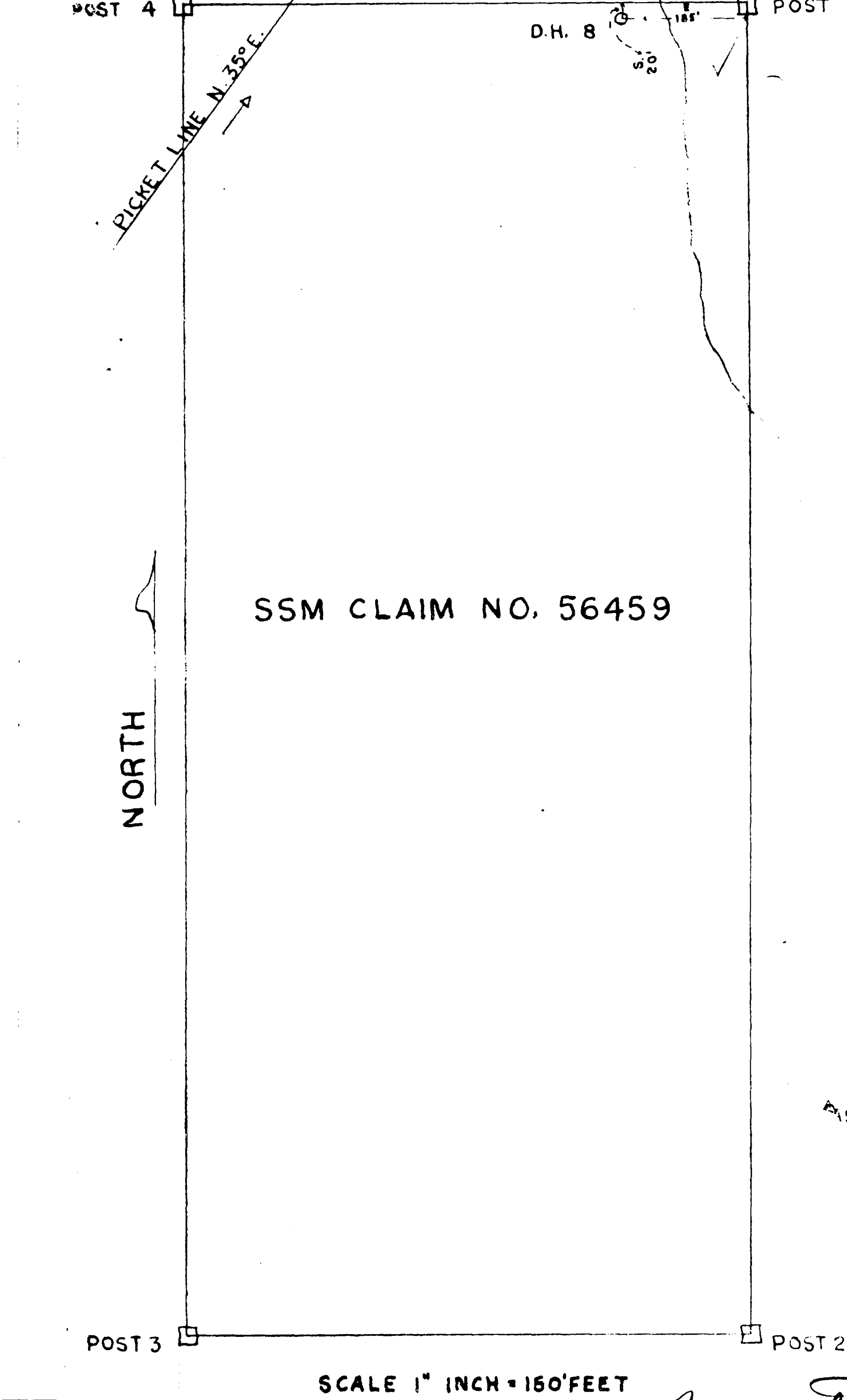
SSM CLAIM NO. 56459

NORTH

POST 3

POST 2

SCALE 1" INCH = 160' FEET

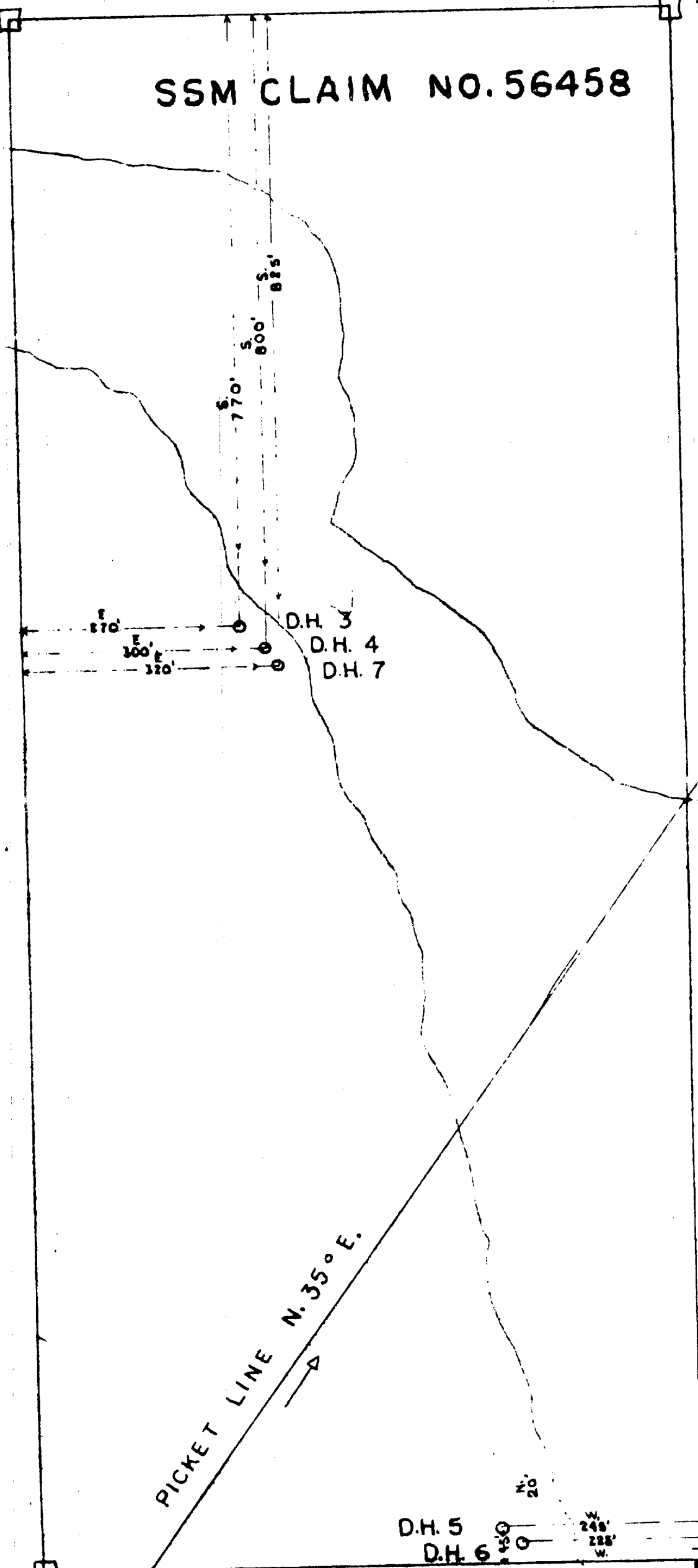


POST 4

POST 1

SSM CLAIM NO. 56458

NORTH



PICKET LINE N. 35° E.

D.H. 3
D.H. 4
D.H. 7

E 270'
E 300'
E 320'

S 770'
S 600'
S 815'

D.H. 5
D.H. 6
W 240'
W 288'

POST 3

POST 2

ASSESSMENT WORK

SCALE 1" INCH = 150' FEET