



42G16SE8006 15 CLAY

DIAMOND DRILLING

Township: clay

Report No: 15

WORK PERFORMED FOR: Mettagami Mining Co. Ltd.

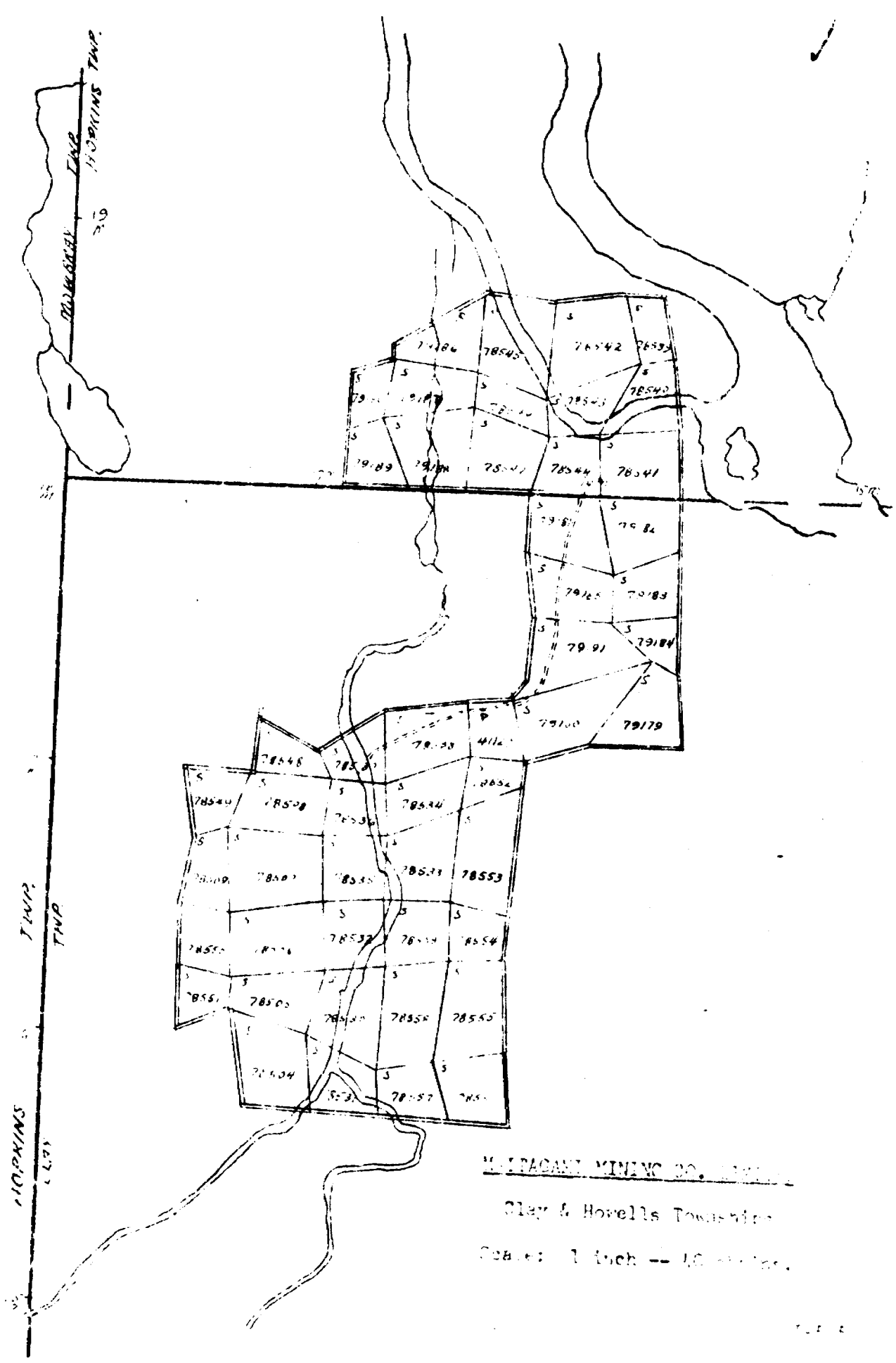
RECORDED HOLDER: SAME AS ABOVE []
: OTHER [] UNKNOWN

<u>CLAIM NO.</u>	<u>HOLE NO.</u>	<u>FOOTAGE</u>	<u>DATE</u>	<u>NOTE</u>
S 78507	5	285.5'	1955	(1)
	5x	561.5'	1955	(1)
	11	607'	1955	(1)
	12	692.5	1955	(1)
S 78535	14	189'	May-June/55	(1)
S 78507	15	696'	1955	(1)
	16	655'	May-June/55	(1)
	17	342'	May-June/55	(1)
S 78506	18	308'	May-June/55	(1)
	19	613'	June/55	(1)
S 78507	20	578'	June/55	(1)
S 78506	21	401'	June/55	(1)
S 78507	27	166'	June/55	(1)
	28	1048'	Aug-Sept/55	(1)
S 78535	29	1039.5'	Sept/55	(1)
	30	740'	Sept/55	(1)
S 78532	101	507'	Aug-Sept/55	(1)
	102	505'	Sept/55	(1)
	103	504'	Sept/55	(1)
	104	500'	Sept/55	(1)

NOTES: Donation from R.Sage, OGS, April/87.

MATTAGAMI MINING CO. LTD.

TIMMINS FILE T-565



M. PACANI MINING CO. CLAIMS

Clay & Howells Township

Scale: 1 inch = 40 acres.

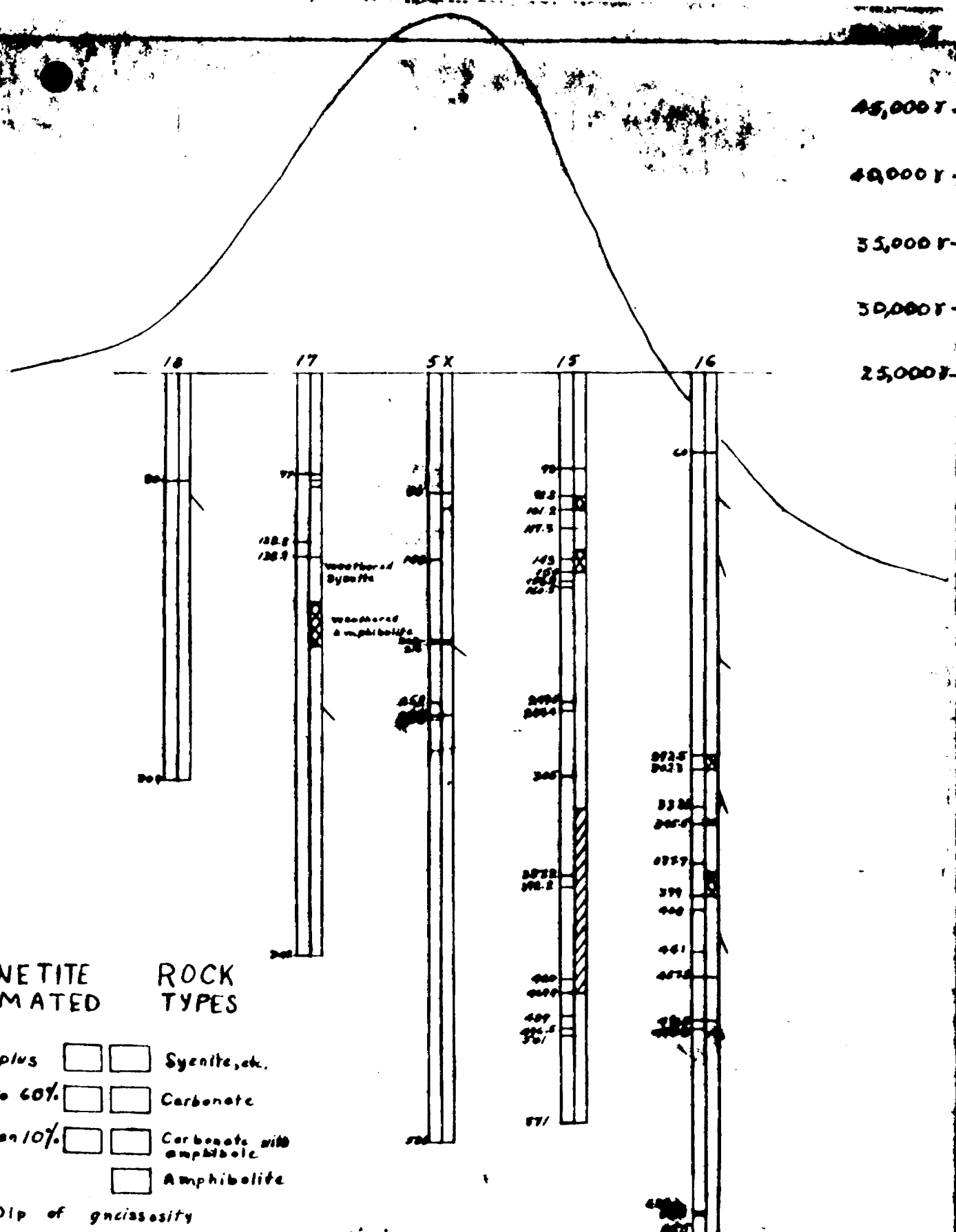
T-205

CLAY-HOWELL OPTION

Clay & Howells Townships

<u>Spec. No.</u>	<u>D.D.H. No.</u>	<u>Footage</u>	<u>Description</u>
1	5X	138	Calcite, garnet and magnetite rock
2	5X	494	Breccia
3	6	422	Magnetite vein contact zone at border consisting of amphiboles.
4	15	644	Carbonate with abundant magnetite
5	16	70	Syenite
6	16	415	Carbonate with disseminated magnetite
7	16	529	Carbonate with abundant magnetite.
8	17	344	Syenite
9	22	193	Syenite with porphyroblasts.

45,000 T
 40,000 T
 35,000 T
 30,000 T
 25,000 T




MAGNETITE ESTIMATED

60% plus Syenite, etc.

10% to 60% Carbonate

Less than 10% Carbonate with amphibole

Amphibolite

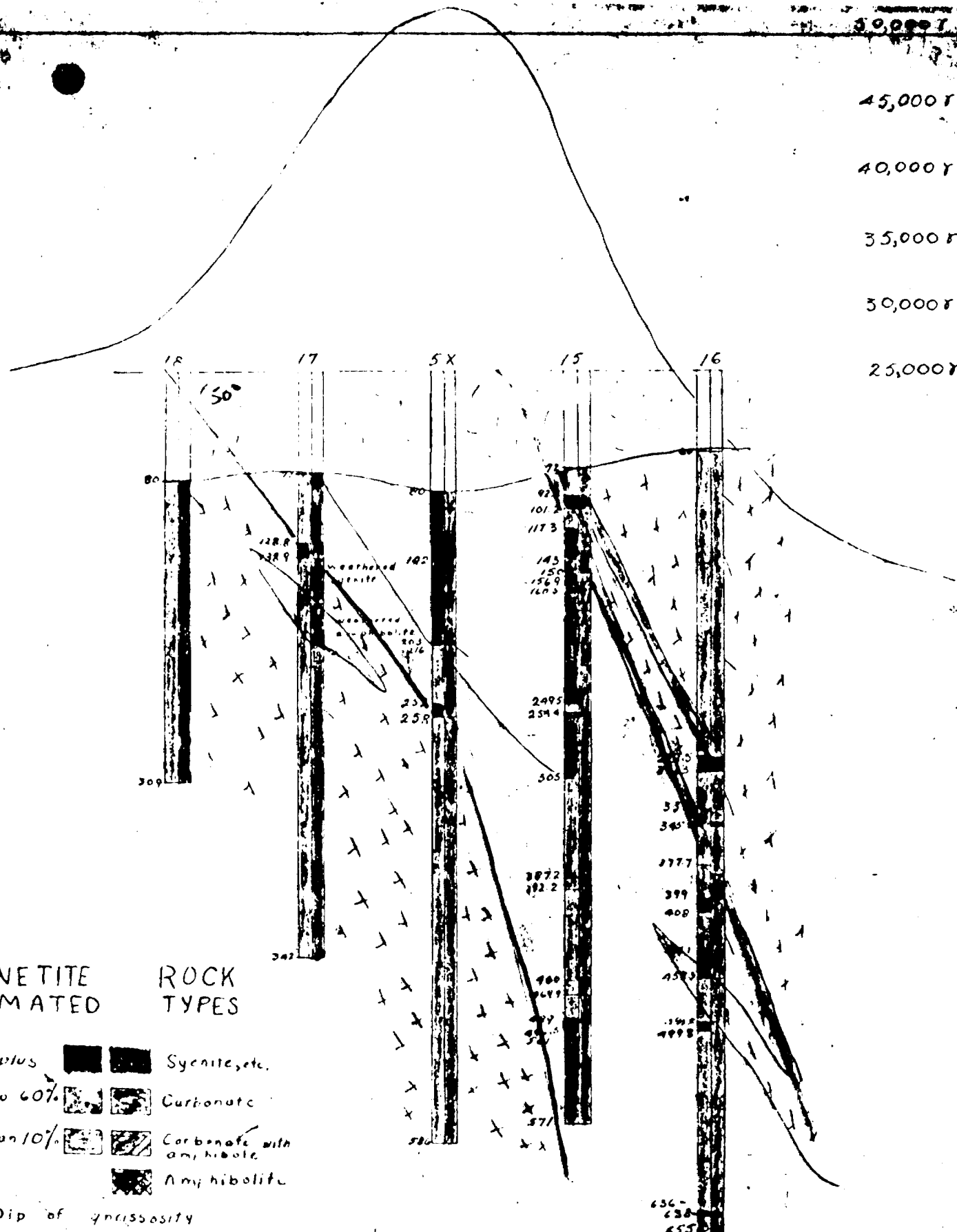
 Dip of gneissosity

SCALE 100 FT. = 1 INCH

SECTION 1175 WEST

CLAY → HOWELLS PROSPECT

30,000
45,000
40,000
35,000
30,000
25,000



MAGNETITE ESTIMATED

60% plus Syenite, etc.

10% to 60% Carbonate

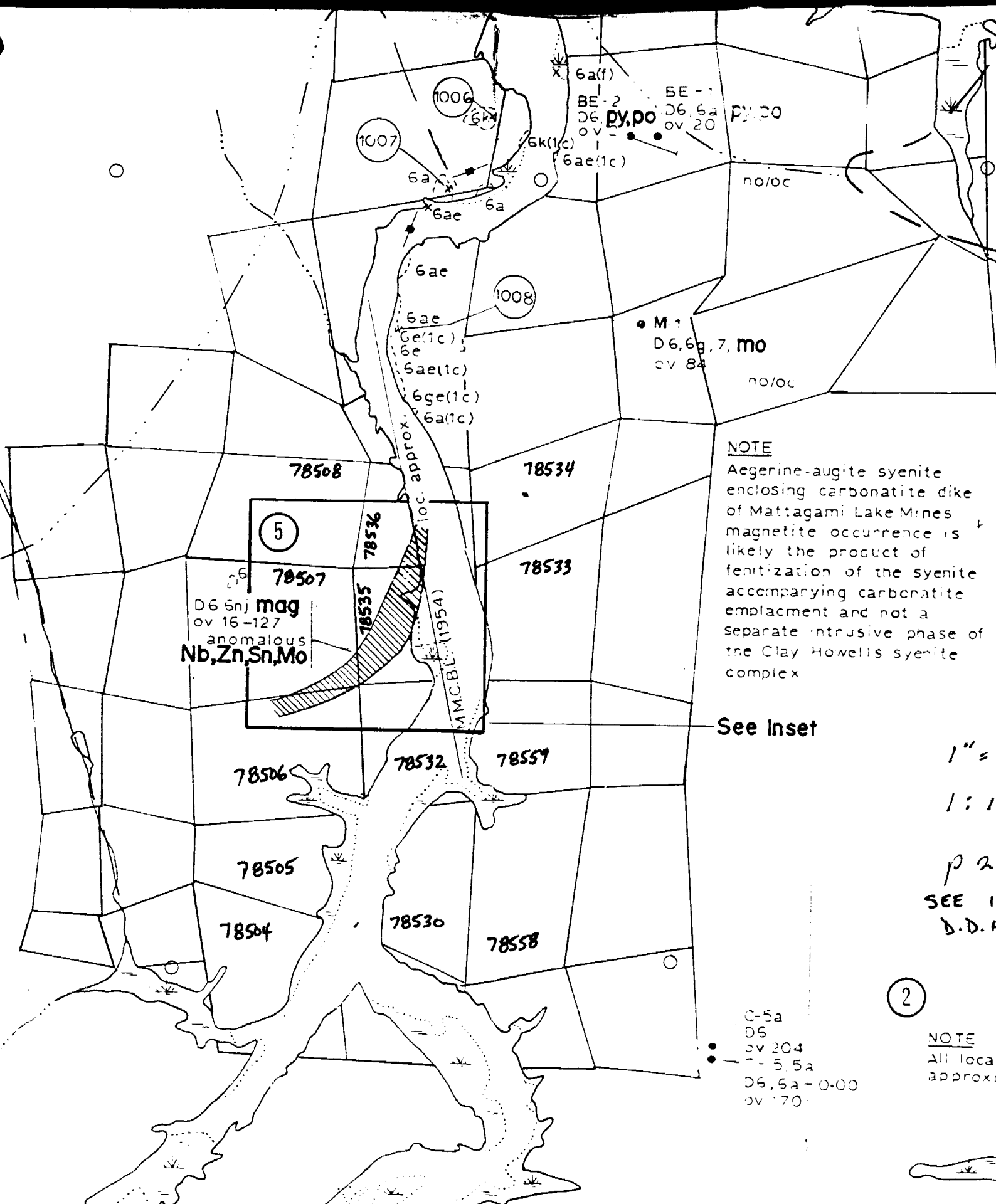
Less than 10% Carbonate with amphibole

Amphibolite

Dip of gneissosity

SCALE 100 FT. = 1 INCH

SECTION 1175 WEST A-B
 LORING, WEST.
 MATTAGAMI MINING COMPANY
 CLAY-HOWELLS PROSPECT
 TWP MAGNETITE BODY



49°54'30"

82°15'00"

**DIAMOND DRILLING BY
MATTAGAMI MINING CO. LTD.,
1954**

Note: Diamond drill hole data compiled from
Regional Geologist's file T-565, Timmins
Compilation and drafting by
Paul Chamois, Geological Assistant
August, 1975.

SCALE
400'



20-00W

18-00W

16-00W

14-00W

12-00W

10-00W

8-00W

6-00W

4-00W

2-00W

Baseline

2-00E

4-00E

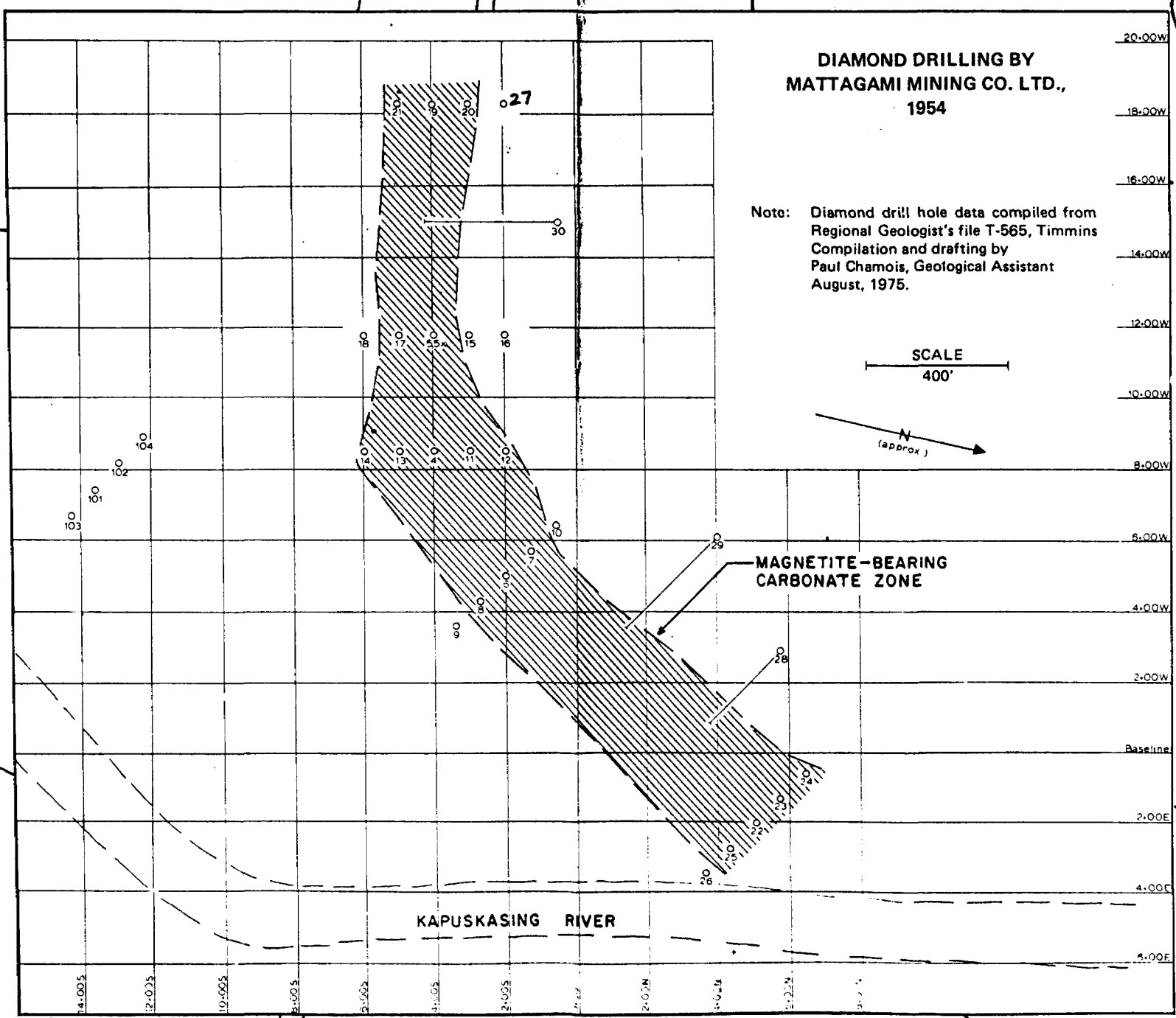
6-00E

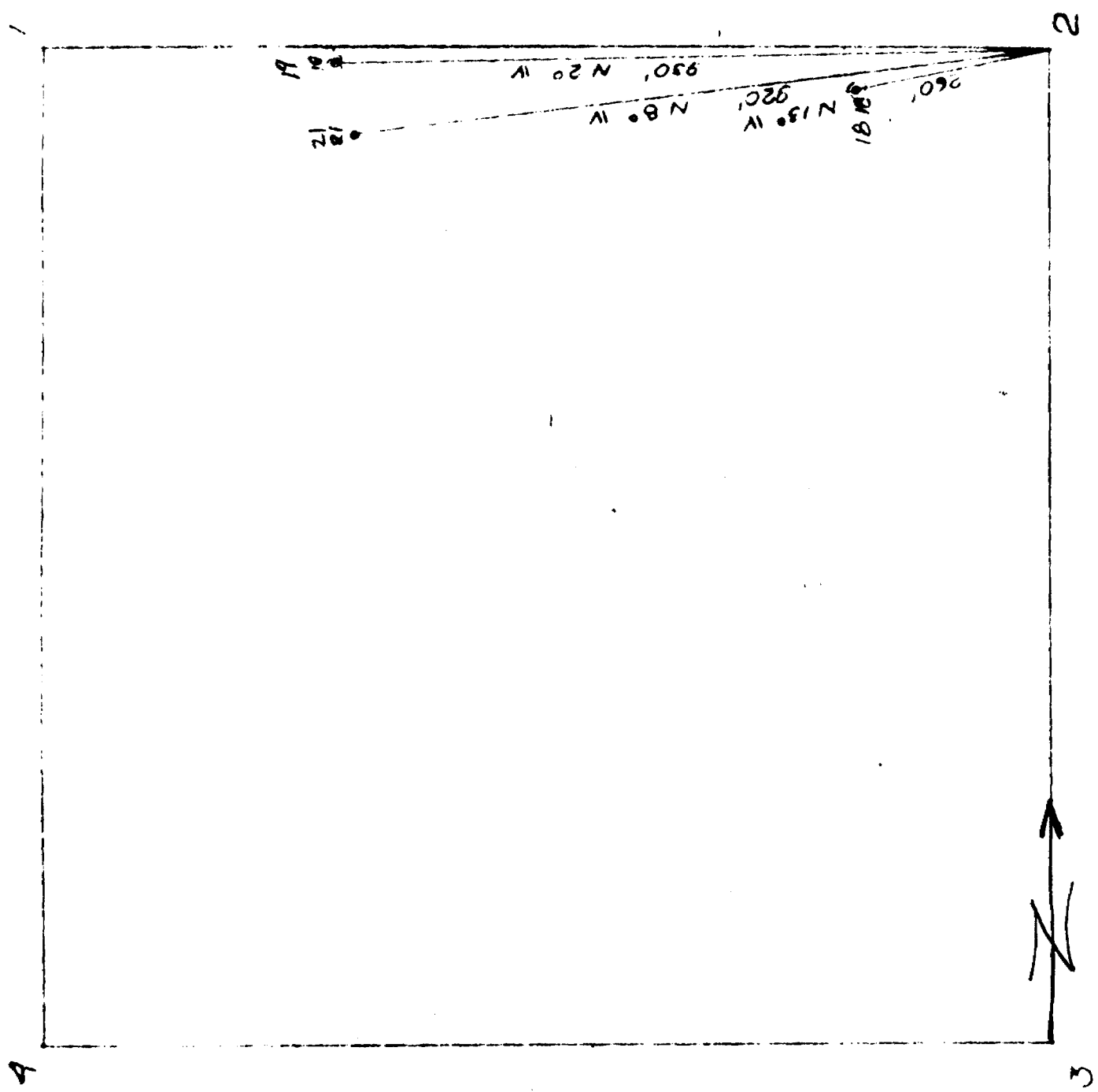
**MAGNETITE-BEARING
CARBONATE ZONE**

KAPUSKASING RIVER

INSET MAP
FROM OGS
P. 2239

INSET MAP



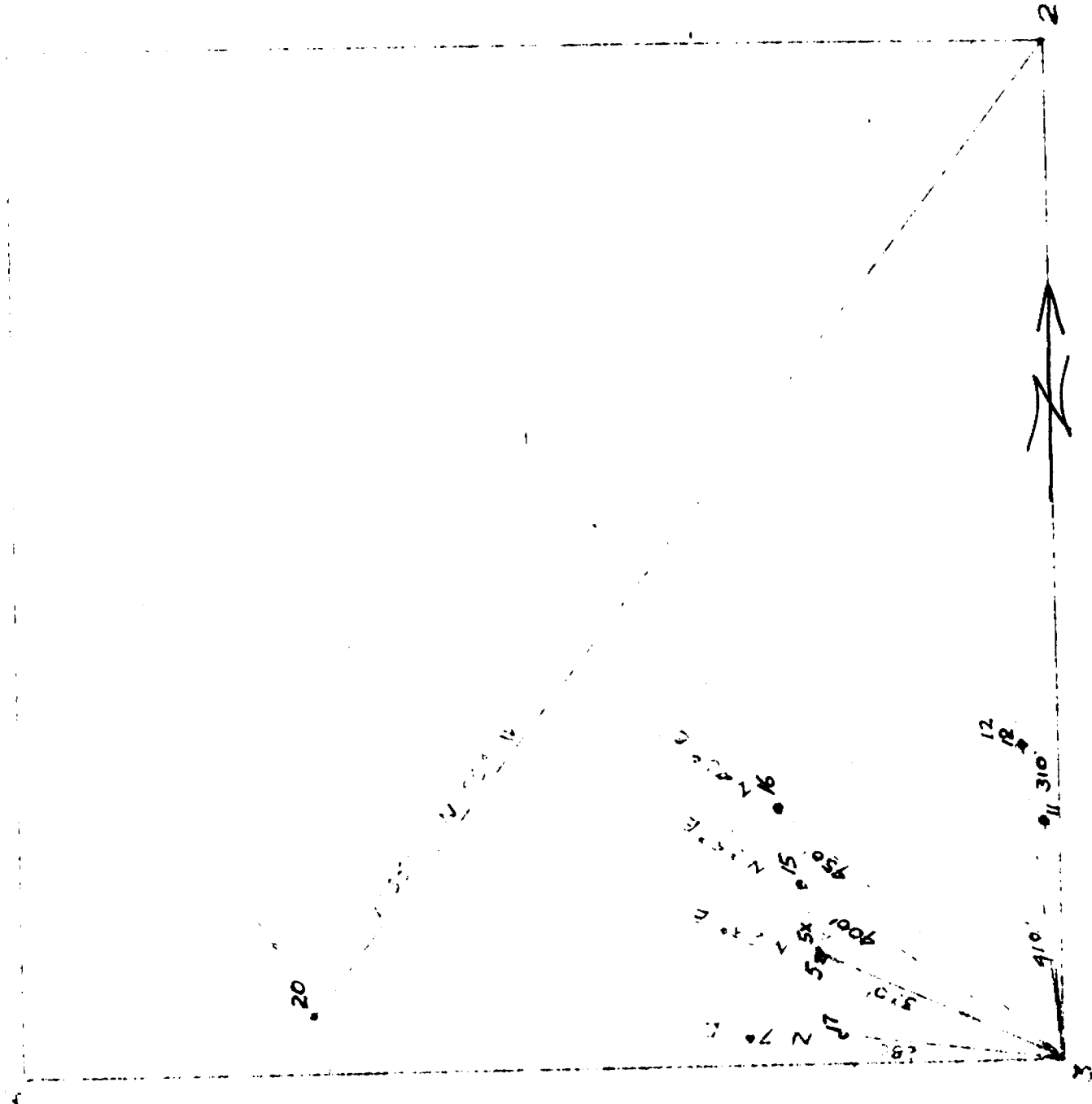


CLAIM 78506

ASSESSMENT WORK

SCALE : 1" = 200'

CERTIFIED



CLAIM **78507**

ASSESSMENT WORK

SCALE 1" = 200'

CERTIFIED

1-505

Vicki...

DIAMOND DRILL RECORD

PROPERTY _____

HOLE NO. 5 x
5-2

SHEET NUMBER 1

SECTION FROM E TO S1.5

STARTED 8/26/58

LATITUDE 3 plus 20 S

DATUM _____

COMPLETED 8/2/58

DEPARTURE 11 plus 75 N

BEARING _____

ULTIMATE DEPTH 500'

ELEVATION _____

DIP 20°

PROPOSED DEPTH 500'

DEPTH FEET	FORMATION	SAMPLE NO.	WIDTH OF SAMPLE	GOLD \$	SLURRY GOLD \$
0 - 50	Quartz				
50 - 100	broken rk. crs (massive)				
100 - 140.0	mag. calc. mt.				
140 - 200	mag. blk. coarsely x-lime mag. sec. minor cal. & blide.				
200 - 210.0	fine gr. pink sym.				
210.0 - 240.0	mag. calc. mt.				
240.0 - 250.0	mass. mag. some blide				
250.0 - 260.0	med. gr. pink sym.				
260.0 - 300	fn. gr. dense felditic zone				
300 - 360	leached & oxidised, fractured sym. some obs. iron minor Lamitic				
360 - 390	crs. gr. pink sym.				
390 - 397.7	fn. gr. dark felditic zone (2° breccia @ 397.7')				
397.7 - 450.0	med. gr. pink sym (alt. 400 - 405 blide.)				
450.0 - 480	HK leached & alt. med. gr. sym. (porphyritic)				
480 - 490.0	blidite (cal. mt. minor mag.)				
490.0 - 501.0	breccia zone CoS cement vugs with cal. xls. white.				
501.0 - 505	alt. fn. gr. sym. (fractured)				
505 - 551.0	med. gr. dr. grey sym becoming crs. gr. & porphyritic E. G. E.				

ASSESSMENT WORK

N.M.P. TORONTO-STOCK FORM NO. 501 REV. 12/51

DRILLED BY _____

SIGNED _____

7-505

DIAMOND DRILL RECORD

PROPERTY CLAY & SONNE HOLE NO. 23 11

SHEET NUMBER 2 SECTION FROM 9 TO 37.1 STARTED _____

LATITUDE _____ DATUM _____ COMPLETED _____

DEPARTURE _____ BEARING _____ ULTIMATE DEPTH _____

ELEVATION _____ DIP _____ PROPOSED DEPTH _____

DEPTH FEET	FORMATION	SAMPLE NO.	WIDTH OF SAMPLE	GOLD g	ELURSE GOLD g
0 - 68	Casing.				
68 - 120.2	alt. mass; predominantly biotite chlorite some sym. remnants, minor mag. less than 10%				
120.2 - 128	fine gr. ground mass with some subhedral feldspar, some alteration.				
128 - 140	biotite with sym. fragments, some calcite and finely disseminated pyrite.				
140 - 151	fine gr. foliatic sym. with several coarse bands throughout				
151 - 202.5	biotite & calcite with occ. minor mag. (20%) coarse gr. sym. str. at 151 - 152.5 and 160 - 162.5				
202.5 - 261.5	fine gr. grey-green foliatic some much coarser and fractured some bounding mag. sil. sym. @ 242 better core recovery				
261.5 - 262.4	alt. mass biotite sym. frags. calcite.				
262.4 - 278	mag. cal. mat. 20%				
278 - 294.5	mag. mag. 50%				
294.5 - 305	mag. cal. mat. 20%				
305 - 324	mass. black, mag. 80% with biotite at 324 - 326.5				
324 - 340.5	mag. cal. mat. 20%				
340.5 - 348	blk. mass. mag. 80%				
348 - 354	mag. minor cal. mat. 60%				
354 - 359.1	mass. blk. mag. 80% with violet fluorite crystals through out.				

ASSESSMENT WORK

T-56

DIAMOND DRILL RECORD

PROPERTY _____

CLAY & ROCKS

HOLE NO. 22 12

SHEET NUMBER 1

SECTION FROM 0 TO 408.4

STARTED 8/12/68

LATITUDE 2 plus 00/2

DATUM _____

COMPLETED 8/23/68

DEPARTURE 2 plus 80 N

BEARING _____

ULTIMATE DEPTH 622'

ELEVATION _____

DIP 90°

PROPOSED DEPTH 600'

DEPTH FEET	FORMATION	SAMPLE NO	WIDTH OF SAMPLE	GOLD g	SLUDGE GOLD g		
0 - 36	Casing						
36 - 85.5	fine to med. gr. pink sym. minor pyrite throughout						
85.5 - 102.5	felsitic some minor fine pyrite						
102.5 - 124.5	alteration some with hblite. sec. oxidized zones. med. to large feldspar phenocrysts in perth sym.						
124.5 - 128.5	med. gr. pink sym. leached and oxidized some limonite particles.						
128.5 - 225.7	leached & oxidized some of hblite. some sym remnants. sec. light blue alter. product has a limonite 158 - 174 mesh last conc. minor mag. band 151.5 - 156						
225.7 - 228.6	med. gr. sym. conc. feldspars; hblite & fluorite.						
228.6 - 236.5	hblite.						
236.5 - 266	fine gr. pink-gray sym.						
266 - 271.5	hblite with sym. remnants.						
271.5 - 281.5	hblite. some mag. sym. remnants.						
281.5 - 312.2	med. gr. pink sym.						
312.2 - 317	hblite alter zone.						
317 - 342	breccia zone, hblite in fracture zone. CuS cement.						
342 - 361.5	hblite conc. sym. remnant.						
361.5 - 385.2	felsitic some gray						
385.2 - 408.4	hblite con. mat. with felsitic remnants.						

ASSESSMENT WORK

T-565

DIAMOND DRILL RECORD

PROPERTY _____

HOLE NO. 12

SHEET NUMBER 2

SECTION FROM 400.4 TO 603.8

STARTED _____

LATITUDE _____

DATUM _____

COMPLETED _____

DEPARTURE _____

BEARING _____

ULTIMATE DEPTH _____

ELEVATION _____

DIP _____

PROPOSED DEPTH _____

DEPTH FEET	FORMATION	SAMPLE NO.	WIDTH OF SAMPLE	GOLD g	SLUDGE GOLD g
400.4 - 415	bluish cal. mt. minor mag.				
415 - 420.5	bluish.				
420.5 - 422.8	leached, felsitic zone contact 75% to core axis				
422.8 - 431.7	bluish cal. mt.				
431.7 - 440.7	bluish & mag. cal. mt.				
440.7 - 455.8	fine gr. felsitic zone.				
455.8 - 481.8	bluish cal. mt. minor mag. less than 10%				
481.8 - 490.2	gray felsitic zone				
490.2 - 502.7	bluish cal. mt. mag. (minor)				
502.7 - 509.4	mag. cal. mt.				
509.4 - 530.7	mag. cal. mt.				
530.7 - 545.7	mag. minor cal. mt.				
545.7 - 556.1	mass. blk. mag.				
556.1 - 569.8	alter. zone. bluish & felsitic remnants.				
569.8 - 575	mass. blk. mag.				
575 - 575	mag. cal. mt.				
575 - 601	mass. blk. mag.				
601 - 631.2	mag. cal. mt.				
631.2 - 644.2	fine gr. felsitic zone with alt. at both ends.				
644.2 - 657.3	mag. cal. mt.				
657.3 - 663.8	mass. mag.				

ASSESSMENT WORK

N.M.P. TORONTO-STOCK FORM NO. 501 REV. 12/51

DRILLED BY _____

FIGURES _____

DIAMOND DRILL RECORD

PROPERTY CLAY & BOWLES HOLE NO. 15

SHEET NUMBER 1 SECTION FROM 0 TO 392.6 STARTED 5/28/55
 LATITUDE 3 plus 00 S DATUM _____ COMPLETED _____
 DEPARTURE 11 plus 75 W BEARING _____ ULTIMATE DEPTH _____
 ELEVATION _____ DIP 90° PROPOSED DEPTH 600'

DEPTH FEET	FORMATION	SAMPLE NO.	WIDTH OF SAMPLE	GOLD g	SLUDGE GOLD g
0 - 72	Casing				
72 - 82.8	med. gd. pink sym. much hblde.				
82.8 - 101.2	hblde. mass. mag. - 65%				
101.2 - 117.3	med. gd. pink sym. some lost conc. & alt.				
117.3 - 143	mass. blk. mag. 70%				
143 - 180	alt. sym. hblde. & minor mag.				
180 - 186.9	mass. blk. mag. 70%				
186.9 - 190.5	mag. cal. mat. 30%				
190.5 - 192	mass. blk. mag. 70%				
192 - 211	mag. cal. mat. 60% sym. str. 194 - 199.5				
211 - 220	mass. blk. mag. 70%				
220 - 249.5	mag. minor cal. mat. 60%				
249.5 - 253	hblde to minor cal. less than 10%				
253 - 254.5	fine gd. grey sym.				
254.5 - 305	mag. cal. mat. 60%				
305 - 316	hblde to mag. cal. mat. 30%				
316 - 331.8	mag. cal. mat. 60%				
331.8 - 343.8	hblde to cal. mat. minor mag. less than 10%				
343.8 - 367.2	mag. h blde cal. mat. 30%				
367.2 - 392.6	alt. some hblde cal. & fine gd. dark felsitic remnants.				
			ASSESSMENT WORK		

N.M.P. TORONTO-STOCK FORM NO. 501 REV. 12/51

DRILLED BY

SIGNED

7-565

DIAMOND DRILL RECORD

16

PROPERTY CLAY & JEWELS HOLE NO. 18

SHEET NUMBER 1 SECTION FROM 0 TO 494.8 STARTED 8/25/56

LATITUDE 8 plus 00 S DATUM _____ COMPLETED 6/7/58

DEPARTURE 11 plus 70W BEARING _____ ULTIMATE DEPTH 655'

ELEVATION _____ DIP 90° PROPOSED DEPTH 600'

DEPTH FEET	FORMATION	SAMPLE NO.	WIDTH OF SAMPLE	GOLD \$	SLUDGE GOLD \$
0 - 60'	oolite				
6' - 71	med. gr. pink sym. minor bblde inclusions				
71 - 98.7	fine gr. pink & gray sym.				
98.7 - 102	crse. gr. pink sym. crse. faldapara				
102 - 105.7	alt. sym. fine gr. some pyrite prominent alt. zones				
105.7 - 112.8	crse. gr. pink sym.				
112.8 - 152.8	fine gr. gray sym. with some alt.				
152.8 - 206.8	med. gr. pink sym. with some oxidation & 180 - 190 (limonite fractures)				
206.8 - 257	alt. zone sym. becoming oolite with much bblde. & sec. limonite veins				
257 - 295.2	fine gr. gray. faldapara zone.				
295.2 - 302.2	mass. mag.				
302.2 - 322.2	fine gr. pink sym.				
322.2 - 342.2	alt. zone bblde with sym. remnants, minor mag. 80%				
342.2 - 363	med. gr. pink sym.				
363 - 377.5	very coarse faldapara & sec. fluorite (sym. porphyry)				
377.5 - 399	bblde sym. remnants mag.				
399 - 408	mass. black mag.				
408 - 441	mag. ool. mat.				
441 - 457.5	mass. mag. minor bblde				
457.5 - 494.8	alt. sym. much bblde mag.				

ASSESSMENT WORK

T-565

DIAMOND DRILL RECORD

PROPERTY _____

CLAY & HOWLES _____

HOLE NO. 27 ¹⁷

SHEET NUMBER 1

SECTION FROM 0 TO 342

STARTED 5/20/55

LATITUDE 4 plus 003

DATUM _____

COMPLETED 6/2/55

DEPARTURE 11 plus 75W

BEARING _____

ULTIMATE DEPTH 342

ELEVATION _____

DIP 90°

PROPOSED DEPTH 500

DEPTH FEET	FORMATION	SAMPLE No.	WIDTH OF SAMPLE	GOLD \$	SLUDGE GOLD \$
0 - 77	Casing				
77 - 122.8	var. with cal. rat. med. gr. sym. str. 81.8 - 85.7 & 85 - 87.4 lost core. 87.5 - 100				
122.8 - 138.9	mass. black. mag. w/ leached & oxidized sym. str. 134 - 136				
138.9 - 226	leached & oxidized sym. such lost core 161 - 206 con. hem. & limonite.				
226 - 342	med. gr. gray sym. con. lead. hblite some limonite fracture fillings lost core 275 - 278				
<p>Hole 17 has had considerable trouble in fractured area with much cementing since the past 200' from 138.9 on in syenite this hole was stopped rather than running to 500'</p> <p>Hole 18, 100' south, is all sym. holes 5 & 6 N to north sym. below 100'</p>					
ASSESSMENT WORK					

DRILLED BY _____

SIGNED _____

T-565

DIAMOND DRILL RECORD

PROPERTY _____

CLAY & HOWELL'S _____

HOLE NO. 19
20

SHEET NUMBER 1

SECTION FROM 0 TO 542.8

STARTED 6/2/55

LATITUDE _____

DATUM _____ 613

COMPLETED 6/7/55

DEPARTURE _____

BEARING _____

ULTIMATE DEPTH _____

ELEVATION _____

DIP 90°

PROPOSED DEPTH 800

DEPTH FEET	FORMATION	SAMPLE NO.	WIDTH OF SAMPLE	GOLD \$	SLUDGE GOLD \$
0 - 40	casing				
40 - 54	fine gr. gray symm.				
54 - 116.5	mag. cal. mt.				
116.5 - 130.9	mag. cal. mt.				
130.9 - 139.7	porph. symm. str.				
139.7 - 168	mag. cal. mt.				
168 - 176.4	mag. minor cal. mt.				
176.4 - 177	symm. str.				
177 - 181	mass. mag.				
181 - 241.3	med. gr. porph. symm. with calcic sere & alt. (minor) 22% - 230.2				
241.3 - 265	alt. sere - blide cal. mt. sec. minor mag. less than 10% in 6" bands.				
265 - 417.3	med. gr. gray porphyritic symm.				
417.3 - 448	alt. sere predominantly calcic with blide & symm. remnants.				
448 - 456.4	fract. symm. sere oxidation.				
456.4 - 463.2	mass. mag. minor blide				
463.2 - 518.5	carbonate (calcic) sere mag. over all				
518.5 - 524	fine gr. fels. sere				
524 - 537	carb. minor mag.				
537 - 547.8	blidite minor mag. lost core 544 - 547.8				
547.8 - 613	mag. cal. mt. E.O.H. 6/7/55				

ASSESSMENT WORK

N.M.P. TORONTO-STOCK FORM NO. 501 REV. 12/51

DRILLED BY _____

SIGNED _____

7.565

DIAMOND DRILL RECORD

52

PROPERTY CLAY & HUBBIS HOLE NO. 30 20

SHEET NUMBER 1 SECTION FROM 0 TO 406.4 STARTED 6/7/55
 LATITUDE 3 plus 00 S DATUM _____ COMPLETED 6/21/55
 DEPARTURE 18 plus 25 W BEARING _____ ULTIMATE DEPTH 576'
 ELEVATION _____ DIP 98° PROPOSED DEPTH 600'

DEPTH FEET	FORMATION	SAMPLE NO.	WIDTH OF SAMPLE	GOLD \$	SLUDGE GOLD \$
0 - 28	casing				
28 - 31.4	med. gr. gray sym.				
31.4 - 41	hard seam (no core)				
41 - 52.5	med. gr. gray sym.				
52.5 - 66	fine gr. felsitic sym.				
66 - 71.4	med. gr. gray sym.				
71.4 - 111	fine gr. gray sym.				
111 - 140.3	mass. blk. mag.				
140.3 - 153.3	med. gr. gray sym. with cone alteration				
153.3 - 186.4	fine gr. slightly porphyritic sym.				
186.4 - 218	med. gr. gray sym. with alteration. from 200' on.				
218 - 300.3	mag. minor cal. mt.				
300.3 - 311.7	med. gr. gray sym.				
311.7 - 320.6	mag. cal. mt.				
320.6 - 331.8	mass. mag. minor cal. mt.				
331.8 - 360.4	med. gr. gray sym.				
360.4 - 366.3	mag. minor cal. mt.				
366.3 - 370.4	med. gr. gray sym.				
370.4 - 382.4	mag. cal. mt.				
382.4 - 404.4	med. gr. pink sym.				

ASSESSMENT WORK

- 65

PROPERTY CLAY-HOWELLS HOLE NO. 28

SHEET NUMBER 1 SECTION FROM 0.0 TO 630.7 STARTED 8/27/55
 LATITUDE 1200 N.E. DATUM _____ COMPLETED _____
 DEPARTURE 1400 N.W. BEARING S.E. ULTIMATE DEPTH _____
 ELEVATION _____ DIP 74° PROPOSED DEPTH 100'

DEPTH FEET	FORMATION	% Mag	WIDTH OF SAMPLE	GOLD \$	SLUDGE GOLD \$
0.0-65.0	Casing				
65.0-330.0	Med to Crse. Gd. Gray Syen.				
330.0-333.2	Fn. Gd. Grey Syen.				
333.2-430.0	Med. to Crse. Gd. Gray to Pink Syen.				
430.0-449.6	Med. Grd. Pink Syen. with Minor Alt. (Limonitic Fracture Zones Occ) Sm. Core Loss (Approx. 1 ft)				
449.6-505.0	Highly Alt. Zone of Pink, Med-Crse. Gd. Syen. much Chlorite, Etc. 471.9-472.6. Ext. chloritized & soft. Cement Hole at 474'.				
505.0-530.0	Hblde; Alt. & brecciated zone with Limonitic factures Occ.				
530.0-547.5	Mag: Cal. Matrix	30%			
547.5-555.0	Alt. Zone Hblde; Chlor: Cal				
555.0-582.0	Mag: cal. Matrix	30%			
582.0-601.3	Part. Alt. Med. Gd. Syen.				
601.3-616.0	Alt. Zone; Hblde; Chlor; Cal. Occ. Minor Mag.				
616.0-627.1	Mag: Cal. Matrix	30%			
627.1-630.7	Med. Gd. Pink Syen.				

DRILLED BY _____

SIGNED _____

PROPERTY

CLAY-HOWELLS

HOLE NO. 28

SHEET NUMBER 2

SECTION FROM 630.7 TO 904.7

STARTED 8/27/55

LATITUDE 1200 NE

DATUM

COMPLETED

DEPARTURE 1400 NW

BEARING SE

ULTIMATE DEPTH

ELEVATION

DIP 74°

PROPOSED DEPTH 1000'

DEPTH FEET	FORMATION	% Mag	WIDTH OF SAMPLE	GOLD \$	SLUDGE GOLD \$			
630.7-644.4	Mag: Cal. Matrix	30%						
644.4-787.2	Fn. Gd. Dense Hbls & Cal. "Hblite" with occ. jasper "Gneissosity" 35°-45° bands of Mag. & Cal. @762.2-763.5 & 783.7-784.2							
787.2-801.0	Mass Black Mag.	65%						
801.0-815.0	Mag: Minor Cal.	60%						
815.0-824.0	Muddy Black Mag. (poor coring)	60%						
824.0-827.8	Mass Black Mag.	65%						
827.8-832.3	Mag; Cal. Matrix	40%						
832.3-839.3	Mass Mag.	60%						
839.3-846.0	Mag. Minor Cal. Matrix	50%						
846.0-856.0	Alt. Zone; Hbl; Chlor. etc. Anqleto Core Axis = 30°							
856.0-867.5	Mag; Cal. Matrix	45%						
867.5-876.0	Fn. Gd. Gray Felsitic Zone, Some Alteration							
876.0-880.5	Mass. Mag.	65%						
880.5-885.4	Fn. Gd. Gray Fels.							
885.4-904	Mag. Minor Cal. Mat.	60%						
	(9/10/55)							

DRILLED BY _____

SIGNED _____

PROPERTY CLAY-HOWELLSHOLE NO. 28SHEET NUMBER 3SECTION FROM 885.4 TO 1014.0STARTED 8/27/55LATITUDE 1200 NE

DATUM _____

COMPLETED _____

DEPARTURE 1400 NWBEARING SE

ULTIMATE DEPTH _____

ELEVATION _____

DIP 74°PROPOSED DEPTH 1000'

DEPTH FEET	FORMATION	% Mag.	WIDTH OF SAMPLE	GOLD \$	SLUDGE GOLD \$			
885.4-913.5	Mag. Minor Cal. Matrix	50%						
913.5-919.5	Felsite; Grey, Fn. Gd.							
919.5-935.0	Mag.: Cal. Matrix	25%						
935.0-967.0	Felsite							
967.0-968.6	Mass Mag. Minor Cal.	60%						
968.6-969.8	Felsite							
969.8-972.5	Mag. with Cal. Matrix	50%						
	Minor Felsitic Remnants							
972.5-974.0	Felsite, Fn. Gd. Pinkish Grey							
974.0-983.3	Alt. Syen. Sm. Hbl. & Felsitic Bands							
983.3-984.5	Mass Mag. Minor Cal.	50%						
984.5-987.3	Felsite Fn. Gd. Minor Hbl.							
987.3-988.5	Mag. & Cal. Some Hble.	35%						
988.5-989.8	Felsite Fn. Gd.							
989.8-990.3	Hornblendite & Chlorite	<10%						
990.3-1008.0	Mass. Mag. Minor Cal. & Hbl.	63%						
1008.0-1010.0	Ground Core							
1010.0-1012.0	Alt. Syen.							
1012.0-1014.0	Ground Core							

DRILLED BY _____

SIGNED _____

PROPERTY CLAY-HOWELLS HOLE NO. 29

SHEET NUMBER 1 SECTION FROM 0.0 TO 529.4 STARTED 9/15/55
 LATITUDE 850 NE DATUM _____ COMPLETED _____
 DEPARTURE 1505 NW BEARING S.E. ULTIMATE DEPTH _____
 ELEVATION _____ DIP 70° PROPOSED DEPTH 1,000'

DEPTH FEET	FORMATION	% Mag	WIDTH OF SAMPLE	GOLD \$	SLUDGE GOLD \$		
0.0-48.5	Casing						
48.5-477.0	Syen med. cor. gd. Pink to Pinkish-Grey						
477.0-493.3	Alt. Syen. Sm. Hbl. & Chlorite						
493.3-494.7	Cal. and Hbl. grading to Hornblendite Minor Mag	10%					
494.7-495.5	Alt. Syen.						
495.5-497.5	Mag. with Ca.	25%					
497.4-498.3	Alt. Syen, Hbl., Sparse Pyrrh.						
498.3-498.5	Mag. & Hbl.	50%					
498.5-500.0	Ground Core						
500.0-502.6	Syen. med.-cor. gd. Pink						
502.6-504.0	Ground Core						
504.0-506.0	Ext. Alt. Syen.						
506.0-509.0	Mag. with Cal. Matrix, minor Hbl. Sm. Hem. Stain	40%					
509.0-510.5	Alt. Syen.						
510.5-517.0	Ground Core						
517.0-523.2	Mag. with Calcite Matrix Sm. Hbl.	35%					
523.2-527.2	Ext. Alt. Syen. fine-med. gd.						
527.2-529.4	Mag. with Cal. Matrix, Minor Hbl.	35%					

DRILLED BY _____

SIGNED _____

PROPERTY

CLAY-HOWELLS

HOLE NO. 29

SHEET NUMBER 3

SECTION FROM 576.5- TO 675.8

STARTED 9/15/55

LATITUDE 850 NE

DATUM

COMPLETED

DEPARTURE 1505 NW

BEARING S.E.

ULTIMATE DEPTH

ELEVATION

DIP 70°

PROPOSED DEPTH 1000'

DEPTH FEET	FORMATION	% Mag	WIDTH OF SAMPLE	GOLD \$	SLUDGE GOLD \$			
576.5-577.7	Ext. Alt. Syen. Pinkish-Brown Fine gd.							
577.7-601.5	Hornblendite, sm. Chl. & Syen. Fragments							
601.5-504.2	Syen. med. gd. Pink							
604.2-608.6	Ext. Alt. Syen. Green Grey Hbl. & Chl.							
	6" Pink Syen @ 606'							
608.6-615.6	Syen. med. gd. Pink							
615.6-631.0	Ext. Alt. Syen. Green-Grey grading to Hornblendite Minor Mag. Sm. Chl.	<5%						
631.0-633.0	Mag. with Cal. Matrix Minor Hbl.	35%						
633.0-633.5	Syen. cor. gd. Pink							
633.5-635.0	Ground Core							
635.0-635.5	Alt. Syen.							
635.5-636.2	Mag. in Cal. Matrix	35%						
636.2-637.2	Hornblendite							
637.2-659.7	Alt. Syen. med. gd. Grey Minor Chl. Very Minor Mag.	<5%						
659.7-672.0	Hbl. & Chl. & Cal. cor. gd. Sm. Mag.	20%						
672.0-674.5	Altered & Carbonated Syen. Fine gd. Green-Grey							
674.5-675.8	Hornblendite with Minor Calcite							

DRILLED BY _____

SIGNED _____

PROPERTY CLAY-HOWELLSHOLE NO. 29SHEET NUMBER 4SECTION FROM 675.8 TO 793.6STARTED 9/15/55LATITUDE 850 NE

DATUM _____

COMPLETED _____

DEPARTURE 1505 NWBEARING S.E.

ULTIMATE DEPTH _____

ELEVATION _____

DIP 70°PROPOSED DEPTH 1000'

DEPTH FEET	FORMATION	% Mag	WIDTH OF SAMPLE	GOLD \$	SLUDGE GOLD \$			
675.8-686.0	Hbl. Chl. & Cal. cor. gd.	10-15%						
686.0-721.0	Mag. with Cal. Matrix Sm. Hbl. & Chl	25-30%						
721.0-728.0	Hbl. Chl. & Cal. cor. gd. Minor Mag.	5%						
728.0-734.5	Ext. Alt. Syen. with Minor Cal. & Mag	<10%						
734.5-744.7	Mag. with Cal. Matrix. Sm. Massives	50%						
744.7-747.5	Ext. Alt. Syen. cor. gd. grading to Hornblendite Chl. etc. Sm. Mag.	5%						
747.5-748.7	Mag. Hbl. & Cal. cor. gd.	25%						
748.7-751.5	Mass Mag. Black	55%						
751.5-754.5	Hbl. & Mag. med. gd.	25%						
754.5-756.2	Hbl. & Chl. Sm. Syen. Fragments	< 5%						
756.2-762.5	Mass. Mag. black Minor Cal. & Syen. Frag.	50%						
762.5-768.0	Hornblendite, Minor Chl.							
768.0-775.4	Mass. Mag. black	65%						
775.4-779.5	Mag. & Hbl.	45%						
779.5-785.5	Mag. with Cal. Matrix Sm. Hbl.	40%						
785.5-786.1	Mag. & Hbl.	50%						
786.1-787.7	Hbl. & Minor Mag.	10%						
787.7-789.0	Mag. with Cal. Matrix	40%						
789.0-793.6	Hbl. with Minor Mag. Sm. Cal.	15%						

DRILLED BY _____

SIGNED _____

PROPERTY

CLAY-HOWELLS

HOLE NO. 29

SHEET NUMBER 5

SECTION FROM 793.6 TO 927.4

STARTED 9/15/55

LATITUDE 850 NE

DATUM

COMPLETED

DEPARTURE 1505 NW

BEARING S.E.

ULTIMATE DEPTH

ELEVATION

DIP 70°

PROPOSED DEPTH 1000'

DEPTH FEET	FORMATION	% Mag.	WIDTH OF SAMPLE	GOLD \$	SLUDGE GOLD \$			
793.6-796.8	Hbl. with Mag.	35%						
796.8-798.7	Hbl. with Sm. Syen. Fragments							
798.7-808.7	Alt. & Carbonated Syen. Fine-med. gd. Grey							
808.7-810.4	Mag. with Calcite Matrix	40%						
810.4-812.0	Ext. Altered & Carbonated Syen. Fine gd. Green							
812.0-816.5	Mag. with Cal. Matrix	35%						
816.5-820.0	Ext. Alt. & Carbonated Syen. Fine gd. Green							
820.0-824.0	Mag. with Cal. Matrix	50%						
824.0-825.7	Alt. Syen. fine gd. Pinkish Grey Felsitic							
825.7-830.7	Mag. with Cal. Matrix Sm. Hbl.	45%						
830.7-831.5	Hbl. & Cal. cor. gd. Minor Mag.	<15%						
831.5-846.0	Hornblendite with Minor Mag.	10%						
846.0-849.0	Ground Core							
849.0-868.5	Hbl. & Cal. cor. gd. Minor Mag.	< 5%						
868.5-870.0	Ground Core							
870.0-892.6	Hbl. & Cal. cor. gd. Minor Mag.	5%						
892.6-910.5	Hbl. & Cal. med. gd. Sm. Mag.	20%						
910.5-912.5	Mag. with Minor Cal. becoming Massive	45%						
912.5-915.3	Hornblendite, cor. gd.							
915.3-927.4	Syen. med. gd. Grey becoming Felsitic							

DRILLED BY _____

SIGNED _____

DIAMOND DRILL RECORD
 PROPERTY CLAY-HOWELLS HOLE NO. 29

SHEET NUMBER 6 SECTION FROM 927.4 TO 1003.0 STARTED 9/15/55
 LATITUDE 850 NE DATUM _____ COMPLETED _____
 DEPARTURE 1505 NW BEARING S.E. ULTIMATE DEPTH _____
 ELEVATION _____ DIP 70° PROPOSED DEPTH 1000'

DEPTH FEET	FORMATION	% Mag	WIDTH OF SAMPLE	GOLD \$	SLUDGE GOLD \$			
927.4-952.7	Mag. with Cal. Matrix	35-40%						
952.7-953.7	Ext. Alt. Syen.							
953.7-956.0	Mag. & Hbl. Minor Cal.	45%						
956.0-960.0	Mass Mag. Minor Cal.	55%						
960.0-962.6	Hbl. with Syen. Fragments							
962.6-963.2	Cal. with Minor Mag.	<10%						
963.2-965.0	Ext. Alt. Syen. Hbl. & Chl. Minor Mag.	5%						
965.0-967.3	Mag. with Cal.	30%						
967.3-968.9	Mag. with Hbl.	30%						
968.9-074.0	Alt. Syen.							
974.0-976.5	Mag. with Cal. Matrix	30%						
976.5-981.2	Alt. Syen. med. gd. Sm. Hbl. with Minor Mag.	<5%						
981.2-985.5	Mass Mag. Minor Hbl. & Cal.	60%						
985.5-987.0	Hbl. & Mag. with Syenitic Fragments	15%						
987.0-991.8	Mag. with Cal. Matrix	30%						
991.8-996.0	Mag. with Hbl.	45%						
996.0-1001.0	Hbl. with Mag. Sm. Chl. Cal. Seams							
	997-999 almost parallel to core axis							
1001.0-1003.0	Ground Core							

DRILLED BY _____

SIGNED _____

PROPERTY

CLAY-HOWELLS

HOLE NO. 29

SHEET NUMBER 7

SECTION FROM 1003.0 TO 1039.5

STARTED 9/15/55

LATITUDE 850 NE

DATUM

COMPLETED

DEPARTURE 1505 NW

BEARING S.E.

ULTIMATE DEPTH

ELEVATION

DIP 70°

PROPOSED DEPTH 1000'

DEPTH FEET	FORMATION	% Mag	WIDTH OF SAMPLE	GOLD \$	SLUDGE GOLD \$			
1003.0-1004.8	Hornblendite with Cal. seams Sm. Chl. lodging in seams							
1004.8-1007.0	Mass Mag. with Sm. Hbl.	60%						
1007.0-1021.0	Mag. with Cal. Matrix Sm. Massive Bands	45%						
1021.0-1021.2	Hornblendite							
1021.2-1023.0	Ground Core							
1023.0-1026.5	Alt. Syen. Fine-med. gd. Pink							
1026.5-1031.0	Mag. with Cal. Matrix	40%						
1031.0-1031.5	Mass. Mag. & Hbl.	55%						
1031.5-1031.9	Syen. Remnant. Fine Gd. Pink							
1031.9-1032.5	Mass Mag. Hbl.	50%						
1032.5-1036.0	Alt. Syen. Med. gd.							
1036.0-1039.5	Mag. with Hbl. - Altered	45%						

DRILLED BY _____

SIGNED _____

PROPERTY

CLAY-HOWELLS

HOLE NO. 30

SHEET NUMBER 1

SECTION FROM 0.0 TO 265.9

STARTED 9/17/55

LATITUDE 1500W

DATUM

COMPLETED

DEPARTURE 45 S

BEARING SOUTH

ULTIMATE DEPTH

ELEVATION

DIP 60°

PROPOSED DEPTH 750'

DEPTH FEET	FORMATION	% mag.	WIDTH OF SAMPLE	GOLD \$	SLUDGE GOLD \$		
0.0-44.3	Casing						
44.3-71.0	Syen. Cor. Gd. Pink						
71.0-173.8	Syen Med-Cor. Gd. Pink-Pinkish Grey						
173.8-174.5	Hornblendite & Chlorite Very Minor Mag.						
174.5-177.2	Cal. with Mag.	20%					
177.2-181.4	Ext. Alt. Syen. Hbl. Chlorite Minor Mag.	< 5%					
181.4-182.6	Cal. with Mag. Minor Hbl.	20%					
182.6-183.1	Mass Mag. with Minor Cal. & Hbl.	35%					
183.1-195.6	Ext. Alt. Syen. with Bads of Cal. & Mag.	10%					
195.6-200.8	Cal. with Hbl. & Mag.	10%					
200.8-206.4	Ext. Alt. Syen. Hbl. & Chlorite, Minor Mag.	< 5%					
206.4-237.7	Cal. with Mag. & Minor Hbl. Mass Mag. Band	25%					
237.7-253.6	Mag. with Calcite Matrix, Minor Hbl.	35%					
	Odd Mass. Mag. Str.						
253.6-254.4	Mass. Mag. Minor Hbl.	55%					
254.4-264.2	Hornblendite with odd Cal. coat						
	Odd Syen. Fragment Sparce Pyrrh.						
264.2-264.8	Mass. Mag. Black	65%					
264.8-265.9	Mag. & Cal.	35%					

DRILLED BY _____

SIGNED _____

PROPERTY CLAY-HOWELLS HOLE NO. 30

SHEET NUMBER 2 SECTION FROM 265.9 TO 342.0 STARTED 9/17/55
 LATITUDE 1500 W DATUM _____ COMPLETED _____
 DEPARTURE 45 S BEARING South ULTIMATE DEPTH _____
 ELEVATION _____ DIP 60° PROPOSED DEPTH 750'

DEPTH FEET	FORMATION	% mag.	WIDTH OF SAMPLE	GOLD \$	SLUDGE GOLD \$
265.9-267.8	Mass Mag. Black	65%			
267.8-280.8	Mag. with Cal. Matrix Sm. Mass Bands	50%			
280.8-283.3	Mag. & Cal.	50%			
283.3-285.2	Hornblendite with Cal. seams				
285.2-290.0	Mag. with calcite Matrix	40%			
290.0-290.9	Mass Mag. Black	70%			
290.9-292.6	Mag. with Ca. Matrix	35%			
292.6-297.0	Mass Mag. with Minor Cal.	50%			
297.0-299.2	Mag. with Cal. Matrix, Minor Hbl.	35%			
299.2-312.0	Mag. with Hbl. Minor Cal. Sparce Fine Pyrrh	30%			
312.0-318.3	Mag. with Cal. Matrix Minor Hbl.	45%			
318.3-336.4	Hbl. & Cal. with Mag.	35%			
336.4-337.0	Mass Mag. with Minor Calcite	50%			
337.0-337.4	Hornblendite with Cal. Strs. Minor Mag.				
337.4-338.7	Mag. with Calcite Matrix. Monor Hbl.	40%			
338.7-340.1	Mass Mag. Black	65%			
340.1-341.6	Hbl. & Cal. Minor Mag.	25%			
341.6-342.0	Syen. Med. Gd. Pink				

DRILLED BY _____

SIGNED _____

PROPERTY CLAY-HOWELLS HOLE NO. 30

SHEET NUMBER 3 SECTION FROM 342.0 TO 579.2 STARTED 9/17/55
 LATITUDE 1500 W DATUM _____ COMPLETED 9/29/55
 DEPARTURE 45 S BEARING South ULTIMATE DEPTH 740'
 ELEVATION _____ DIP 60° PROPOSED DEPTH 750'

DEPTH FEET	FORMATION	% Mag.	WIDTH OF SAMPLE	GOLD \$	SLUDGE GOLD \$
342.0-351.5	Hbl. & Mag. Minor Cal. Pink Syen. Incl'n 346.2-347.0	25%			
351.5-358.2	Syen. cor. gd. Pink				
358.2-403.0	Hbl. & Mag. Sm. Cal. Few Syen. Remnants	30%			
403.0-423.2	Syen. med. gd. Pinkish - Grey				
423.2-431.5	Alt. Syen. Cor. gd.				
431.5-441.0	Mass Mag. with Minor Calcite * Hbl.	55%			
441.0-449.0	Alt. Syen. Hbl. & Minor Mag.	<5%			
449.0-503.5	Syen. med.-cor. gd. Pink-Grey				
503.5-513.0	Mass Mag. Minor Cal. Odd Syen. Band	65%			
513.0-517.0	Hornblendite				
517.0-535.0	Alt. Syen. cor. gd. Pink-Grey				
535.0-536.9	Mass Mag.	65%			
536.9-537.3	Alt. Syen.				
537.3-538.3	Mass Mag.	65%			
538.3-574.0	Syen. cor. gd. Pink				
574.0-575.8	Alt. Syen. Hbl. Minor Mag.	<10%			
575.8-577.2	Hbl. & Mag.	40%			
577.2-578.5	Syen. cor. gd. Pink				
578.5-579.2	Mass Mag. Minor Hbl.	60%			

DRILLED BY _____

SIGNED _____

PROPERTY CLAY-HOWELLS HOLE NO. 30

SHEET NUMBER 4 SECTION FROM 579.2 TO 740.0 STARTED 9/17/55
 LATITUDE 1500W DATUM _____ COMPLETED 9/29/55
 DEPARTURE 45 S BEARING South ULTIMATE DEPTH 740'
 ELEVATION _____ DIP 60° PROPOSED DEPTH 750'

DEPTH FEET	FORMATION	% Mag.	WIDTH OF SAMPLE	GOLD \$	SLUDGE GOLD \$		
579.2-605.3	Syen. cor. gd. Grey-Pink						
605.3-610.7	Mag. with Cal. Matrix	45%					
610.7-615.0	Hbl. & Cal. cor. gd. Sm. Mag.	20%					
615.0-636.0	Hbl. & Chl. with Minor Cal. & Mag. Few Syen.	10%					
	Remnants						
636.0-641.0	Syen. cor. gd. Pink						
641.0-642.8	Alt. Syen. Hbl. Minor Mag.	<10%					
642.8-644.7	Mag. with Cal. Matrix	30%					
644.7-653.0	Hbl. Chl. & Cal. cor. gd. Minor Mag.	<5%					
653.0-653.8	Mass Mag. & Hbl.	50%					
653.8-656.0	Alt. Syen. Sm. Hbl. & Chl. Very Minor Mag.	<5%					
656.0-724.5	Syen. med.-cor. gd. Pinkish - Green						
740.0	E.O.H.						

DRILLED BY _____

SIGNED _____

PROPERTY

CLAY-HOWELLS

HOLE NO. 101

SHEET NUMBER 1

SECTION FROM 0.0 TO 464.2

STARTED 8/28/55

LATITUDE 3550 S

DATUM

COMPLETED 9/5/55

DEPARTURE 750 W

BEARING

ULTIMATE DEPTH 507'

ELEVATION

DIP 90°

PROPOSED DEPTH 600'

DEPTH FEET	FORMATION	% Mag.	WIDTH OF SAMPLE	GOLD \$	SLUDGE GOLD \$		
0-125	Casing						
125-173.1	Hbls and Mag. with Cal. Matrix						
	Occ. Mass Bands	30%				101A-123-150	
173.1-182.5	Extremely Alt. Syen. (Hbls, Etc.)					101B-150-175	
182.5-185.4	Mag. With Cal. Matrix	25%				101C-175-200	
185.4-239.1	Extremely Alt. Syen. Occ. Minor Mag. (5%)					101D-231.1-266.7	
239.1-269.2	Mag. with Cal. Matrix	40%				101E-266.7-283.5	
	(Mass. From 267.3-269.2)	65%				283.5-291.4	
269.2-286.5	Hblsite; Calcite: Syen. Remnants					307.3-320	
286.5-292.4	Mag; Calcite matrix	35%				325.6-331.5	
292.4-300	Hblsite; Cal. Mat.; Syen. Remnants					101E-335-353	
300-307.3	Matrix Alt. Pink Syen.; Occ. Mag. Band 6"					498.6-507	
307.3-318	Mag. with Calcite Matrix	25%				101G-475-498.6	
318-326.6	Alt. Pink Syen. Occ. Mag. Band 5"					Remainder of	
326.6-334.5	Mag. with Cal. Matrix	30%				Last Box 101G)	
334.5-338	Alt. Pink Syen.						
338-352	Mag. with Cal. Matrix	40%				24E-366-391	
352-399	Alt. Pink Syen. with Occ. Bands of					Top of Hblsite	
	Magnetite (5") with Hblde					& Minor Mag.	
399-434	Med. Gd. Pink Syen. Less Alt.					24F-1002.8-1011.7	
434.-464.2	Alt. Pink Syen. With Minor Mag. Occ.					1090-1090.8	

DRILLED BY _____

SIGNED _____

PROPERTY CLAY-HOWELLS HOLE NO. 102

SHEET NUMBER 1 SECTION FROM 0.0 TO 262.3 STARTED 9/5/55
 LATITUDE 1289 S DATUM _____ COMPLETED _____
 DEPARTURE 821 W BEARING _____ ULTIMATE DEPTH _____
 ELEVATION _____ DIP 90° PROPOSED DEPTH 500'

DEPTH FEET	FORMATION	% Mag/	WIDTH OF SAMPLE	GOLD \$	SLUDGE GOLD \$		
0.0-122.0	Casing						
122.0-148.0	Alt. Grey Syen. with Band of Mag. 131-131.6 (Considerable core loss - 75% Recovery)						
148.0-149.3	Mass. Mag. (Limonitic stain)	60%					
149.3-157.3	Ground & Lost Core - Coment						
157.3-159.3	Mass Mag. (Limonitic stain)	60%					
159.3-172.0	Syen. Med-cor. grained Gray Pink 50% Core Recovery						
172.0-174.6	Mag. with Calcitic Matrix	30%					
174.6-177.0	Ground & Lost Core						
177.0-242.4	Mag. with calcitic Matrix Odd Narrow Massive Band Ground Core 183.5-185.0	40%					
	187.7-190.0 191.8-193.0						
	195.2-197.0 204.7-205.6						
	213.0-215.0 222.5-225.5						
	231.5-233.0 233.5-335.6						
242.4-262.3	Extremely altered Syen. Much Hblde & Chlorite Very Minor Mag.						

DRILLED BY _____

SIGNED _____

DIAMOND DRILL RECORD

PROPERTY CLAY-HOWELLS HOLE NO. 102

SHEET NUMBER 2 SECTION FROM 262.3 TO 350.0 STARTED 9/5/55
 LATITUDE 1289S DATUM _____ COMPLETED _____
 DEPARTURE 821W BEARING _____ ULTIMATE DEPTH _____
 ELEVATION _____ DIP 90° PROPOSED DEPTH 500'

DEPTH FEET	FORMATION	% Mag.	WIDTH OF SAMPLE	GOLD \$	SLUDGE GOLD \$			
262.3-264.6	Altered Syen. Hbl. Minor Mag.							
264.6-265.1	Mass Mag. Black	65%						
265.1-267.0	Altered Syen.							
267.0-268.1	Mass Mag. Minor Cal.	60%						
268.1-268.6	Syen. Cor. Gd. Pink							
268.6-277.7	Mag. with Calcitic Matrix	40%						
277.7-283.3	Altered Syen.							
283.3-292.1	Mag. Cal. Matrix	20%						
292.1-296.6	Extremely Altered Syen. (Hornblendite)							
296.6-301.3	Mass Mag. Hblde & Cal.	40%						
301.3-321.8	Mag. Cal. Matrix Some Syen Remnants	50%						
321.8-325.0	Mass Mag. Minor Carbonate & Hbl.	50%						
325.0-348.2	Extremely Altered Syen. & Hornblendite							
348.2-350.0	Mag. with Minor Carbonate	40%						

1/10

DRILLED BY _____ SIGNED _____

PROPERTY CLAY-HOWELLS HOLE NO. 102

SHEET NUMBER 4 SECTION FROM _____ TO _____ STARTED 9/5/55
 LATITUDE 1289S DATUM _____ COMPLETED 9/6/55
 DEPARTURE 821W BEARING _____ ULTIMATE DEPTH 505.0'
 ELEVATION _____ DIP 90° PROPOSED DEPTH 500'

DEPTH FEET	FORMATION	% Mag	WIDTH OF SAMPLE	GOLD \$	SLUDGE GOLD \$			
398.7-420.0	Mag. Calcitic Matrix							
	Odd Syen Remnant	40%						
420.0-439.9	Altered Syen. Hbl. Chlorite							
	Minor Mag.							
439.9-449.1	Mag. Calcitic Matrix - Pink	45%						
	Syen Remnant 444.0-444.5							
449.1-474.5	Syen. Med.-cor. gd. Pink-Grey							
	Odd Mag. & Hbl. Stringer							
474.5-477.7	Hornblende, Chlorite & Mag.	20%						
477.7-505.0	Syen. Med. gd. Greyish-Pink	< 5%						
	Few Hbl. & Mag. Str.							
505.0	E.O.H.							

DRILLED BY _____ SIGNED _____

PROPERTY CLAY-HOWELLS HOLE NO. 103

SHEET NUMBER 1 SECTION FROM 0.0 TO 182.6 STARTED 9/16/55
 LATITUDE 1431S DATUM _____ COMPLETED _____
 DEPARTURE 679W BEARING _____ ULTIMATE DEPTH _____
 ELEVATION _____ DIP 90° PROPOSED DEPTH 500'

DEPTH FEET	FORMATION	% Mag.	WIDTH OF SAMPLE	GOLD \$	SLUDGE GOLD \$			
0.0-120.0	Casing							
120.0-120.7	Syen. med.-cor. gd. Grey, Few Garnets							
120.7-132.4	Mag. with Calcitic Matrix	45%						
132.4-156.9	Syen. med.-cor. gd. Pink Few Mag.							
	Str.: Mag. with Cal. Matrix Bands							
	147.5-148.8 150.8-152.2 152.7-153.7							
	155.3-156.0 156.5-156.8							
156.9-159.5	Ground Core							
159.5-165.7	Alt. Syen. med. gd. Minor Cal. and Mag. Bands	5%						
165.7-166.9	Mass. Mag. Black with Minor Cal. & Syen.	50%						
	Fragments							
166.9-168.7	Syen. med.-cor. gd. Pink							
168.7-170.5	Ground Core							
170.5-171.5	Mag. with Hbl. & Cal.	50%						
171.5-177.3	Syen. med. gd. Pink							
177.3-177.4	Mag. Hbl. Chlorite Minor Hem.							
177.4-178.0	Ground & Lost Core							
178.0-182.6	Mag. with Cal. Matrix Minor Hbl. & Chlorite	40%						

DRILLED BY _____

SIGNED _____

DIAMOND DRILL RECORD
 PROPERTY CLAY-HOWELLS

HOLE NO. 103

SHEET NUMBER 2

SECTION FROM 182.6 TO 252.5

STARTED 9/16/55

LATITUDE 1431 S

DATUM _____

COMPLETED _____

DÉPARTURE 679W

BEARING _____

ULTIMATE DEPTH _____

ELEVATION _____

DIP 90°

PROPOSED DEPTH 500'

DEPTH FEET	FORMATION	% Mag.	WIDTH OF SAMPLE	GOLD \$	SLUDGE GOLD \$			
182.6-192.1	Syen. med. gd. Pinkish-Grey							
	Mag. & Cal. Str. 191.2-191.4							
192.1-195.7	Hbl. & Chlorite with Mag., Sm. Cal.	25%						
	& Syen. Fragments, Gneissosity 30° to core axis							
195.7-222.5	Alt. Syen. med.-cor. gd., odd Hbl. & Cal. Band							
	Minor Mag.							
222.5-224.2	Mag. with Cal. Matrix	40%						
	Sm. Hbl. & Syen. Fragments							
224.2-225.9	Alt. Syen.							
225.9-226.6	Mag. with Calcitic Matrix	40%						
226.6-228.0	Syen. med. gd. Pink							
228.0-230.6	Mag. with Cal. Matrix	40%						
230.6-232.2	Alt. Syen. with sm. Mag. Seams							
232.2-237.8	Mag. with Cal. Matrix, Minor Hbl.	35%						
	Sm. Syen. Remnants							
237.8-243.9	Alt. Syen. Very Minor Mag.							
243.9-248.9	Mag. & Hbl. with Cal. Matrix	35%						
	Sm. Syen. Remnants							
248.9-252.5	Ext. Alt. Syen. with Minor Mass. Mag.	10%						

DRILLED BY _____

SIGNED _____

PROPERTY CLAY-HOWELLS

HOLE NO. 103

SHEET NUMBER 3

SECTION FROM 252.5 TO 312.2

STARTED 9/16/55

LATITUDE 1431S

DATUM _____

COMPLETED _____

DEPARTURE 679W

BEARING _____

ULTIMATE DEPTH _____

ELEVATION _____

DIP 90°

PROPOSED DEPTH 500'

DEPTH FEET	FORMATION	% Mag	WIDTH OF SAMPLE	GOLD \$	SLUDGE GOLD \$			
252.5-255.2	Alt. Syen. Med. Gd.							
255.2-256.0	Ground Core							
256.0-256.3	Ext. Alt. Syen. Minor Mag.							
256.3-261.6	Mag. with Calcite Matrix							
	Syen. Remnants 257.8-258.6, 258.9-259.2	30%						
	259.8-260.4							
261.6-266.3	Alt. Syen.							
266.3-285.2	Mag. with Cal. Matrix. Limonitic Stain	45%						
	Odd small Syen. Fragment							
285.2-286.3	Alt. Syen							
286.3-289.3	Mag. with Cal. Matrix, Minor Hbl.	45%						
289.3-290.0	Ext. Alt. Syen. Sm. Hbl. Chl. etc.							
290.0-290.8	Mag. with Calcite Matrix	45%						
	Minor Hbl. & Chl.							
290.8-296.7	Alt. Syen. med. gd. with Minor							
	Mag. str. 291.4-292.4							
296.7-300.0	Mag. with Cal. Cm. Syen. Fragments	30%						
300.0-302.5	Alt. Syen. Minor Mag.	<10%						
302.5-312.2	Mag. with Cal. Matrix	25%						
	Syen. Remnant 306.8-307.4							

DRILLED BY _____

SIGNED _____

PROPERTY

CLAY-HOWELLS

HOLE NO.

103

SHEET NUMBER 5

SECTION FROM 336.0 TO 464.8

STARTED 9.16/55

LATITUDE 4131S

DATUM

COMPLETED

DEPARTURE 679W

BEARING

ULTIMATE DEPTH

ELEVATION

DIP 90°

PROPOSED DEPTH 500'

DEPTH FEET	FORMATION	% Mag.	WIDTH OF SAMPLE	GOLD \$	SLUDGE GOLD \$			
336.0-338.0	Mag. with Cal. Matrix	45%						
	Alt. Syen. Remnant 337.0-337.4							
338.0-339.2	Alt. Syen. med. gd.							
339.2-340.8	Mass. Mag. with Cal. & Syen. Fragments	50%						
340.8-388.2	Syen. med-cor. gd. Minor mag. str.	< 5%						
388.2-390.0	Cal. & Mag.	15%						
390.0-395.6	Alt. Syen. Odd Mag. Seam	< 5%						
395.6-398.2	Cal. & Mag.	10%						
398.2-406.8	Alt. Syen., odd Mag. Str.	<10%						
406.8-409.7	Mag. with Cal. Matrix	35%						
	30° to core axis							
409.7-443.7	Alt. Syen, odd Cal. & Mag. Str.	< 5%						
443.7-449.1	Cal. with Minor Mag.	<10%						
449.1-455.2	Alt. Syen. odd Cal. seam. Minor Mag.							
455.2-458.4	Cal. & Mag. Sm. Hbl.							
458.4-462.0	Alt. Syen.							
462.0-463.0	Cal. with Minor Mag. & Hbl.	< 5%						
463.0-463.5	Syen. med. gd. Pink Minor Hbl. & Chlorite	<10%						
463.5-464.8	Mag. with Calcite & Hbl. & Syen Remnants							

DRILLED BY _____

SIGNED _____

PROPERTY CLAY-HOWELLS

HOLE NO. 103

SHEET NUMBER 6

SECTION FROM 464.8 TO _____

STARTED 9/16/55

LATITUDE 1431S

DATUM _____

COMPLETED 9/25/53

DEPARTURE 679W

BEARING _____

ULTIMATE DEPTH 504'

ELEVATION _____

DIP 90°

PROPOSED DEPTH 500'

DEPTH FEET	FORMATION	% Mag	WIDTH OF SAMPLE	GOLD \$	SLUDGE GOLD \$		
464.8-465.3	Mag. with Hbl. & Chlorite, Minor Cal.	40%					
464.3-468.0	Alt. Syen.						
468.0-469.1	Mag. Hbl. & Cal. with Syen. Remnants	10%					
469.1-477.2	Alt. Syen. odd Mag. Seam						
477.2-477.7	Mass. Mag. Black	65%+					
477.70478.7	Alt. Syen. Minor Mag.	5%					
478.7-490.0	Ground Core						
490.0-492.5	Alt. Syen. Hbl. Chlorite, Minor Mag.						
492.5-492.8	Mass. Mag.	65%					
492.8-493.1	Alt. Syen.						
493.1-494.0	Mag. with Cal. Matrix	45%					
494.0-495.1	Cal. with Minor Mag. & Hbl.	10%					
495.1-504.0	Alt. Syen., odd Cal. seam						
504.0	E.O.H.						

DRILLED BY _____

SIGNED _____

PROPERTY

CLAY-HOWELLS

HOLE NO. 104

SHEET NUMBER 1

SECTION FROM 0.0 TO 357.5

STARTED 9/24/55

LATITUDE 1218S

DATUM

COMPLETED 9/30/55

DEPARTURE 892W

BEARING

ULTIMATE DEPTH 500'

ELEVATION

DIP 90°

PROPOSED DEPTH 500'

DEPTH FEET	FORMATION	% Mag	WIDTH OF SAMPLE	GOLD \$	SLUDGE GOLD \$			
0.0-132.0	Casing							
132.0-208.0	Casing 20% Core Recovery							
	Places of Ext. Alt. Syen. & Hbl. & Mag.							
	& Mat. & Cal.							
208.0-229.3	Hornblendite & Chlorite, Minor Mag.							
	& Cal. Sm. Syen. Fragments, 70% core.							
	recovery							
229.3-283.0	Alt. Syen. with Hbl. & Chl. Bands							
	Sm. Cal. Veinlets							
283.0-305.0	Syen. coarse gd. Pink Slight Alt.							
	odd Cal. Veinlet							
305.0-320.0	Alt. Syen. Sm. Hbl. & Cal. bands							
320.0-334.0	Ground Core							
334.0-348.0	Alt. Syen. Med.-coarse gd. Sm. Hbl. bands							
	Few pink Cal. Strs.							
348.0-350.0	Hornblendite, Sm. Chlorite, Very	10%						
	Minor Cal. Minor Mag.							
350.0-353.2	Alt. Syen. Cor. gd.							
353.2-357.5	Ext. Alt. Syen. grading to Hornblendite	10%						
	Sm. Mag.							

DRILLED BY _____

SIGNED _____

PROPERTY

CLAY-HOWELLS

HOLE NO. 104

SHEET NUMBER 2

SECTION FROM 357.5 TO 415.3

STARTED 9/24/55

LATITUDE 1218S

DATUM

COMPLETED 9/30/55

DEPARTURE 892W

BEARING

ULTIMATE DEPTH 500'

ELEVATION

DIP 90°

PROPOSED DEPTH 500'

DEPTH FEET	FORMATION	% Mag	WIDTH OF SAMPLE	GOLD \$	SLUDGE GOLD \$			
357.5-364.3	Slightly Altered Syen. Odd Hornblende Str.							
364.3-375.1	Mag. with Calcite Matrix Odd Mass. Mag. band	45%						
375.1-376.0	Ext. Alt. Syen. Hbl. Chlorite & Minor Mag.	5%						
376.0-377.0	Ground Core							
377.0-378.6	Mag. with Cal. Matrix	35%						
378.6-380.7	Hbl. Mag. & Cal.							
380.1-385.1	Hornblendite Sm. Chlorite & Syen. Fragments	5%						
	Minor Mag.							
385.1-387.6	Atl. Syen. med.-cor. gd. Pink							
387.6-388.4	Mag. with Cal. Matrix	45%						
388.4-390.0	Ext. Alt. Syen.							
390.0-395.4	Hbl. & Chlorite							
395.4-396.8	Hbl. Chlorite Mag. Minor Cal.	35%						
396.8-399.0	Hornblendite Sm. Chlorite							
399.0-400.0	Mag. with Cal. Matrix Sm. Syen. Fragments	30%						
400.0-402.4	Alt. Syen.							
402.4-405.0	Ground Core							
405.0-406.8	Ext. Alt. Syen. Hbl. & Chl.							
406.8-415.3	Mag. with Cal. Matrix Minor Hbl.	40%						

DRILLED BY _____

SIGNED _____

