



42H03SE0101 10 LAMARCHE

010

Diamond Drilling

Township of LAMARCHE

Report NO: 10

Work performed by: Mid-North Engineering

Claim NO	Hole NO	Footage	Date	Note
P 52852	L65-1	550.0'	Apr/65	
P 52852	L65-2	451.0'	May/65	

Notes:

# DIAMOND DRILL RECORD

PROPERTY Mid-North - Lamarche Township

HOLE NO. L 65-1

SHEET NUMBER 1

SECTION FROM \_\_\_\_\_ TO \_\_\_\_\_

STARTED April 24, 1965

LATITUDE 19 + 25' S.

DATUM \_\_\_\_\_

COMPLETED May 2, 1965

DEPARTURE Line 36 # 00 E.

BEARING North

ULTIMATE DEPTH \_\_\_\_\_

ELEVATION \_\_\_\_\_

DIP -50°

PROPOSED DEPTH \_\_\_\_\_

DEPTH FEET	FORMATION	SAMPLE NO.	WIDTH OF SAMPLE	GOLD g	<del>Ag</del> <del>Cu</del> <del>Ni</del>	Cu
0.0' - 198.0'	Casing - clay with few boulders near bedrock					
286.0	Greywacke - impure, gneissic, streaks blue silic., c/a 70° - 75°					
304.0	Greywacke - brecciated, weak pyrite, dissem. and fine stringers					
343.0	Amphibolite					
345.5	Greywacke - med. dissem. pyrite					
348.5	Greywacke - strong silic., med. pyrite & pyrrhotite	22501	3.0'	nil	nil nil	0.01
350.5	Massive Pyrrhotite & pyrite with blebs qtz. (20%)	22502	2.0'	nil	nil nil	0.03
354.0	Siliceous mat.-strong pyrrhotite & pyrite	22503	3.5'	nil	nil nil	0.01
356.7	" " -strong pyrite & pyrrhotite	22504	2.7'	nil	0.10 nil	0.01
369.0	Greywacke - dark grey, fine grained, slaty. c/a 65° - 75°					
373.0	Quartzite					
374.5	Greywacke - dark grey, fine grained slaty.					
379.0	Quartzite					

# DIAMOND DRILL RECORD

PROPERTY Mid-North - Lamarche Township

HOLE NO. L 65-1

SHEET NUMBER 2 SECTION FROM \_\_\_\_\_ TO \_\_\_\_\_ STARTED \_\_\_\_\_  
 LATITUDE \_\_\_\_\_ DATUM \_\_\_\_\_ COMPLETED \_\_\_\_\_  
 DEPARTURE \_\_\_\_\_ BEARING \_\_\_\_\_ ULTIMATE DEPTH \_\_\_\_\_  
 ELEVATION \_\_\_\_\_ DIP \_\_\_\_\_ PROPOSED DEPTH \_\_\_\_\_

DEPTH FEET	FORMATION	SAMPLE NO.	WIDTH OF SAMPLE	GOLD \$	<del>AG</del>
379.0 - 398.0	Greywacke - dk. grey, slaty, fine grained				
498.0	Greywacke - slaty, med. grain, local med. pyrite acc. pebble, could be classed as conglomerate				
	@ 403'-0.5' graphite schist	22505	0.5'		0.60
	@ 428'-wk. dissem. pyrite				
	@ 442'-0.1' white qtz.				
499.0	Qtz. porphyry				
517.5	Greywacke				
518.3	Qtz. porphyry				
523.0	Amphibolite				
523.3	Qtz. porphyry				
530.0	Amphibolite				
531.-	Qtz. porphyry	COLLAR			-50°
545.5	Amphibolite	200'	-58°		-52°
546.3	Qtz. porphyry	400'	-49°		-42°
548.5	Amphibolite				
550.0	Qtz. porphyry				
	Core angle on porph. contacts 85°				
	End of Hole				
	only part of casing & pipe recovered.				

N.M.P., TORONTO-STOCK FORM NO. 501 REV. 12/51

DRILLED BY .....

SIGNED *[Signature]*

# DIAMOND DRILL RECORD

PROPERTY Mid-North - Lamarche Township

HOLE NO. L 65-2

P. 52852

SHEET NUMBER \_\_\_\_\_

SECTION FROM \_\_\_\_\_ TO \_\_\_\_\_

STARTED May 7, 1965

LATITUDE 21 + 75 S.

DATUM \_\_\_\_\_

COMPLETED May 18, 1965

DEPARTURE L 32 \* 00 E.

BEARING North

ULTIMATE DEPTH 451.0'

ELEVATION \_\_\_\_\_

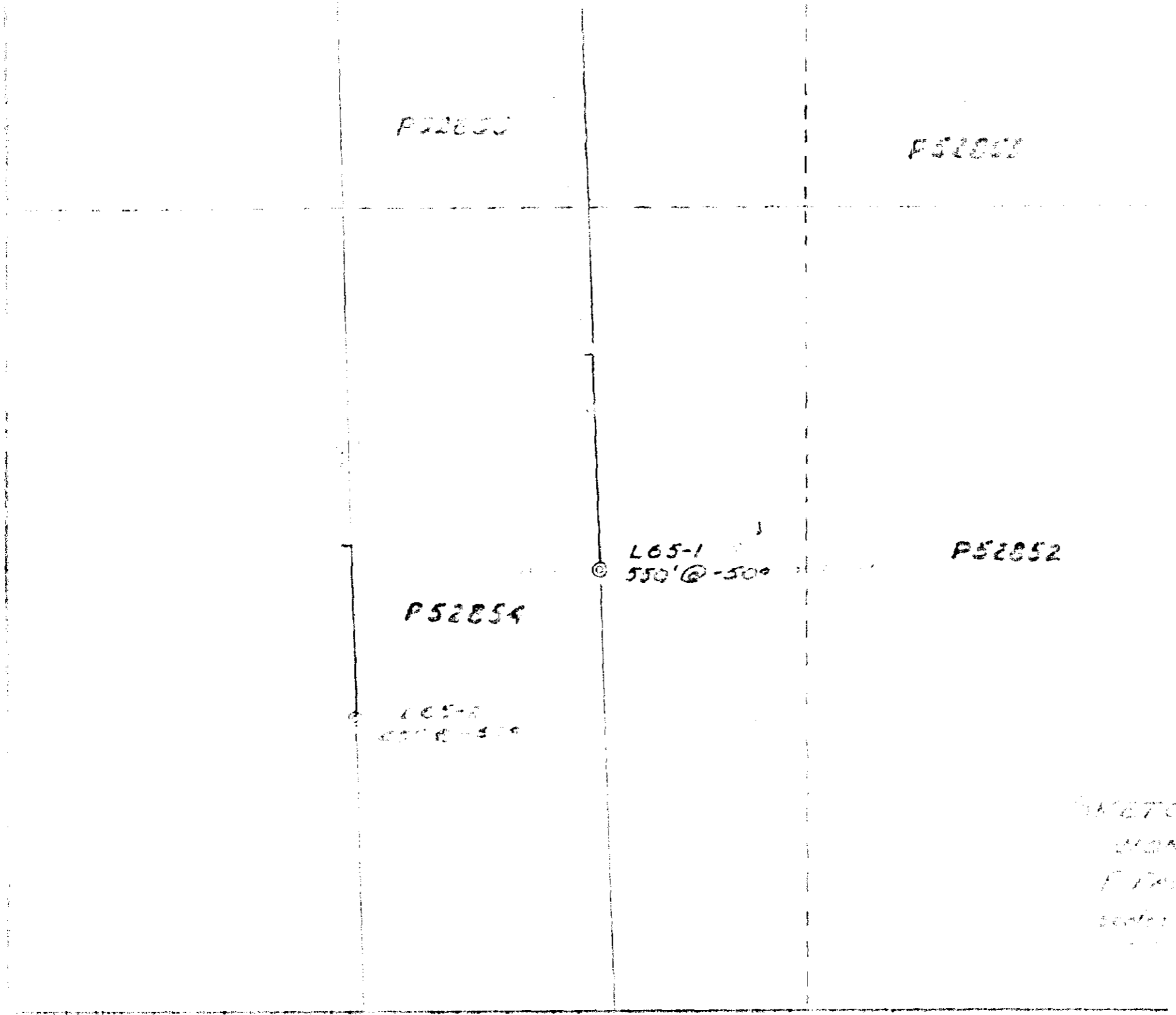
DIP -50°

PROPOSED DEPTH \_\_\_\_\_

DEPTH FEET	FORMATION	SAMPLE NO.	WIDTH OF SAMPLE	GOLD S	AG	CU
0.0' - 222.0	Casing - 0' - 140' clay 140 - 222 - gravel					
392.0	Greywacke - impure, gneissic, med. grain c/a 65° - 70° @ 243' - 1.4' barren white qtz. @ 292' - 0.2' " " " @ 377' - 0.1' white qtz., little platy pyrite @ 385' - 0.3' " " "					
403.0	Greywacke - impure, gneissic, med. grain patchy strong silic., wk. dissem. pyrite					
406.0	Greywacke - grey, med. grain, gneissic, med. pyrrhotite & pyrite	22506	3.0'	nil	0.60 nil	nil
408.5	Siliceous mat. - very strong pyrrhotite, med. pyrite	22507	2.5'	nil	0.60 0.02 0.04	
410.5	Greywacke - grey, med. grain, patches strong silic., weak dissem. pyrite					
450.8	Greywacke - dark grey, f. grained, slatey., c/a 75°			@	READ	CORR.
451.0	Quartz porphyry End of Hole			200'	57°	50 1/2°

DRILLED BY \_\_\_\_\_

SIGNED *W. J. Benne*



P52850

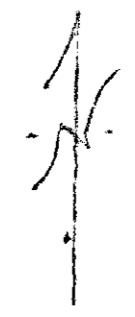
P52851

L65-1  
550' @ -500

P52852

P52854

L65-2  
550' @ -500



SKETCH ACCORDING TO  
MAY 1950 REPORT  
F. J. ...  
500' @ -200'

LOT 5

