



42H08NE0011 20 BLAKELOCK

010

DIAMOND DRILLING

TOWNSHIP: BLAKELOCK TWP.

REPORT NO: 20

WORK PERFORMED FOR: Dome Inc.

RECORDED HOLDER: Same as Above [xx]  
: Other [ ]

<u>Claim No.</u>	<u>Hole No.</u>	<u>Footage</u>	<u>Date</u>	<u>Note</u>
848384	346-002	230	Aug/88	(1)
848393	346-003	225	Aug/88	(1)
848394/ 848393	346-004	201	Aug/88	(1)

NOTES: (1) #W8908.040, filed Mar/89

REF CORD: 10400.0 7300.0 SURVEYED: NO

## PLACER DOME INC.

LOCATION: 4+00N 27+00W GRID: NORTH-SOUTH

## DIAMOND DRILL RECORD

POST LOCATION: 6 M. SOUTH AND 202 M. WEST OF NO. 1 POST.

HOLE NO: 346-002

PROPERTY: PROJECT 346  
BLAKELOCK TWP., ONTARIO

AZIMUTH: 180.0

LENGTH: 230.0

ELEVATION: .0

SECTION:

LOGGED BY: D. HUNT

DIP: -50.0

CORE SIZE: B0

SYSTEM OF MEASURE: METRIC

DATE LOGGED: AUGUST 16 - 18, 1988

STARTED: AUGUST 15, 1988

COMPLETED: AUGUST 18, 1988

CLAIM NO: L.848384

PURPOSE: TO TEST A NORTHERLY STRIKING EM ANOMALY.

## DIP TESTS (corrected)

DEPTH	AZIMUTH	DIP	DEPTH	AZIMUTH	DIP
10.00		-55.5	230.00		-42.5

FROM	TO	-----DESCRIPTION-----	SAMPLE	FROM	TO	LENGTH	Au g/t	RERUN	REJECT	AVERAGE
.00	10.00	CASING IN OVERBURDEN								
10.00	14.57	HIGH-IRON THOLEIITIC BASALT Medium grey green, very fine to fine grained, hard, weakly magnetic. Foliated at 65 degrees to core axis. Lower contact at 40 degrees.								
	10.47	11.47	5% thin quartz stringers, mainly at 65 degrees. 3% pyrite.	E2638	10.47	11.47	1.00			
	11.47	11.96	Similar to 10.47 to 11.47.	E2639	11.47	11.96	.49	.02	-	.02
	11.96	12.89	10% quartz veins, to 2 cm, mainly at 25 degrees. 5% pyrite.	E2640	11.96	12.89	.93	.00	-	-
14.57	38.88	BREYWACKE Some conglomerate. Medium green brown, very fine to medium grained, soft to hard. Locally garnetiferous. Foliation and banding at 50 to 85 degrees. Lower contact at 70 degrees.								
	15.48	16.46	3% pyrite.	E2641	15.48	16.46	.98	.00	-	-
	16.46	17.00	Similar to 15.48 to 16.46.	E2642	16.46	17.00	.54	.00	-	-
	17.70	17.89	5% thin quartz stringers at 30 degrees. 3% pyrite, 2% pyrrhotite and trace chalcopyrite.	E2643	17.70	17.89	.19	.01	-	.01
	19.55	20.53	3% pyrrhotite and 2% pyrite.	E2644	19.55	20.53	.98	.00	-	-
	20.53	21.07	Similar to 19.55 to 20.53.	E2645	20.53	21.07	.54	.00	-	-
	23.00	23.99	3 to 5% thin quartz stringers mainly at 60 degrees. 3% pyrrhotite and 2% pyrite.	E2646	23.00	23.99	.99	.00	-	-
	23.99	25.01	Similar to 23.00 to 23.99.	E2647	23.99	25.01	1.02	.02	.00	.01
	25.01	25.33	Similar to 23.00 to 23.99.	E2648	25.01	25.33	.32	.00	-	-
	25.73	26.07	5% thin quartz stringers at 15 degrees. 2% pyrrhotite and 2% pyrite.	E2649	25.73	26.07	.34	.01	-	.01

ONTARIO GEOLOGICAL SURVEY  
ASSESSMENT FILES  
OFFICE

JAN 27 1989

RECEIVED

PLACER DOME INC.  
DIAMOND DRILL RECORD

HOLE NO: 346-002  
PAGE NO: 2

FROM	TO	DESCRIPTION	SAMPLE	FROM	TO	LENGTH	Au g/t	RERUN	REJECT	AVERAGE
27.36	28.02	2% pyrite and 2% pyrrhotite.	E2650	27.36	28.02	.66	.01	-	-	.01
28.71	29.48	3% thin quartz stringers mainly at 55 degrees. 3% pyrite and 2% pyrrhotite.	E2651	28.71	29.48	.77	.02	-	-	.02
29.83	30.49	2% pyrite and 3% pyrrhotite.	E2652	29.83	30.49	.66	.02	-	-	.02
31.21	31.50	3% pyrite.	E2653	31.21	31.50	.29	.00	-	-	-
31.50	31.87	A quartz vein at 40 to 70 degrees. 5% pyrite, 3% pyrrhotite and sphalerite 2%.	E2654	31.50	31.87	.37	.00	-	-	-
31.87	32.42	5% quartz stringers, to 1.5 cm, mainly at 85 degrees. 5% pyrrhotite and 3% pyrrhotite.	E2655	31.87	32.42	.55	.00	-	-	-
32.42	32.68	Quartz vein. 4% pyrrhotite and 1% pyrite.	E2656	32.42	32.68	.26	.00	-	-	-
32.68	33.75	15% quartz veins, to 8.5 cm, at various angles. 4% pyrrhotite, 4% pyrite and 1% sphalerite.	E2657	32.68	33.75	1.07	.00	-	-	-
33.75	33.98	A 10 cm quartz vein at 55 degrees. 10% pyrrhotite.	E2658	33.75	33.98	.23	.00	-	-	-
33.98	35.00	5% quartz stringers to 1 cm. 4% pyrrhotite and 2% pyrite.	E2659	33.98	35.00	1.02	.00	-	-	-
35.00	36.00	Similar to 33.98 to 35.00.	E2660	35.00	36.00	1.00	.00	-	-	-
36.00	37.01	Similar to 33.98 to 35.00.	E2661	36.00	37.01	1.01	.00	-	-	-
37.01	37.62	Similar to 33.98 to 35.00.	E2662	37.01	37.62	.61	.00	-	-	-
37.62	37.84	30% quartz stringers, to 2 cm, at various angles. 4% pyrite.	E2663	37.62	37.84	.22	.00	-	-	-
37.84	38.88	5% thin quartz stringers at various angles. 3% pyrite and 2% pyrrhotite.	E2664	37.84	38.88	1.04	.00	-	-	-
38.88	99.16	HIGH-IRON THOLEIITIC BASALT Similar to 10.00 to 14.57. Locally bleached. Locally foliated at 40 to 75 degrees. Greywacke, at 60 degrees, from 55.44 to 55.87. Intermediate porphyry, at 50 degrees, from 57.10 to 58.15. Fault gouge at 60 degrees at 55.70 and at 55.79. Lower contact at 35 degrees.								
39.88	40.21	A 12 cm quartz vein at 80 degrees. 1% pyrite.	E2665	39.88	40.21	.33	.08	.08	-	.08
40.21	40.76	3% thin quartz stringers at various angles. 3% pyrite.	E2666	40.21	40.76	.55	.00	-	-	-
41.18	42.10	3% thin quartz stringers at various angles. 1% pyrite.	E2667	41.18	42.10	.92	.00	-	-	-
43.79	44.07	10% quartz stringers, to 1.5 cm, at various angles. 4% pyrite.	E2668	43.79	44.07	.28	.00	-	-	-
44.07	45.07	3% thin quartz stringers at various angles. 3% pyrite.	E2669	44.07	45.07	1.00	.00	-	-	-
45.07	46.00	Similar to 44.07 to 45.07.	E2670	45.07	46.00	.93	.02	-	-	.02
48.09	49.06	3% thin quartz stringers at various angles. 3% pyrite.	E2671	48.09	49.06	.97	.00	-	-	-
49.06	50.00	Similar to 48.09 to 49.06.	E2672	49.06	50.00	.94	.02	-	-	.02
50.00	50.25	Similar to 48.09 to 49.06.	E2673	50.00	50.25	.25	1.06	1.06	-	1.06
53.09	53.33	5% thin quartz-calcite stringers at various angles. 5% pyrite.	E2674	53.09	53.33	.24	.00	-	-	-
53.98	54.82	3% thin quartz-calcite stringers at various	E2675	53.98	54.82	.84	.00	-	-	-



PLACER DOME INC.  
DIAMOND DRILL RECORD

HOLE NO: 346-002  
PAGE NO: 4

FROM	TO	-----DESCRIPTION-----	SAMPLE	FROM	TO	LENGTH	Au g/t	RERUN	REJECT	AVERAGE
		hard, weakly magnetic. Locally foliated at 30 degrees. Lower contact at 45 degrees.								
	99.16	99.51 10% quartz-calcite stringers, to 2 cm, mainly parallel to foliation. 3% pyrrhotite and 3% pyrite.	E2701	99.16	99.51	.35	.00	-	-	-
	101.34	101.82 3% thin quartz-calcite stringers at various angles. 2% pyrite.	E2702	101.34	101.82	.48	.00	-	-	-
	102.30	103.04 5% quartz stringers, to 1 cm, at various angles. 1% pyrite.	E2703	102.30	103.04	.74	.01	-	-	.01
	104.59	105.39 5% thin quartz-calcite stringers at various angles. 4% pyrite.	E2704	104.59	105.39	.80	.00	-	-	-
105.39	230.00	HIGH-IRON THOLEIITIC BASALT Similar to 38.88 to 91.16. Weakly to strongly magnetic. Locally foliated at 30 to 70 degrees. Conductive from 105.39 to 106.38. Weakly conductive from 142.33 to 142.89. Intermediate porphyry, at 65 to 80 degrees, from 126.92 to 128.76.								
	105.39	106.38 CONDUCTIVE. 5% quartz stringers, to 1 cm, at various angles. 8% pyrrhotite and 8% pyrite.	E2705	105.39	106.38	.99	.09	-	-	.09
	106.38	106.74 40% quartz stringers, to 9 cm, at various angles. 8% pyrrhotite and 5% pyrite.	E2706	106.38	106.74	.36	.25	.26	-	.25
	106.74	107.80 10% thin quartz-calcite stringers at various angles. 5% pyrite and 5% pyrrhotite.	E2707	106.74	107.80	1.06	.21	-	-	.21
	107.80	108.81 1% thin quartz-calcite stringers at various angles. 4% pyrite and 1% pyrrhotite.	E2708	107.80	108.81	1.01	.02	-	-	.02
	108.81	109.81 Similar to 107.80 to 108.81.	E2709	108.81	109.81	1.00	.00	-	-	-
	109.81	111.09 Similar to 107.80 to 108.81.	E2710	109.81	111.09	1.28	.01	-	-	.01
	111.09	111.84 3% thin quartz stringers at various angles. 1% pyrite.	E2711	111.09	111.84	.75	.02	-	-	.02
	111.84	112.58 8% quartz stringers and blebs, to 1 cm, at various angles. 4% pyrite and 4% pyrrhotite.	E2712	111.84	112.58	.74	.02	-	-	.02
	112.58	113.71 2% quartz-calcite stringers, to 1 cm, at various angles. 2% pyrite and 2% pyrrhotite.	E2713	112.58	113.71	1.13	.01	-	-	.01
	114.18	114.53 4% thin quartz-calcite stringers at various angles. 1% pyrite.	E2714	114.18	114.53	.35	.02	-	-	.02
	116.55	117.55 3 to 5% thin quartz-calcite stringers at various angles. 1% pyrite.	E2715	116.55	117.55	1.00	.01	-	-	.01
	117.55	118.35 Similar to 116.55 to 117.55.	E2716	117.55	118.35	.80	.00	-	-	-
	118.35	118.91 3% thin quartz-calcite stringers at various angles. 3% pyrite.	E2717	118.35	118.91	.56	.01	-	-	.01
	119.48	120.35 3% quartz-calcite stringers, to 2 cm, at various angles. 4% pyrite.	E2718	119.48	120.35	.87	.02	-	-	.02
	122.00	123.08 3% thin quartz-calcite stringers at various angles. 3% pyrite.	E2719	122.00	123.08	1.08	.02	-	-	.02
	123.63	124.91 4% thin quartz-calcite stringers at various angles. 3% pyrrhotite and 1% pyrite.	E2720	123.63	124.91	1.28	.01	-	-	.01

PLACER DOME INC.  
DIAMOND DRILL RECORD

HOLE NO: 346-002  
PAGE NO: 5

FROM	TO	DESCRIPTION	SAMPLE	FROM	TO	LENGTH	Au g/t	RERUN	REJECT	AVERAGE
124.91	125.44	5% thin quartz-calcite stringers mainly sub-parallel to core axis.	E2721	124.91	125.44	.53	.01	-	-	.01
126.57	126.92	5% quartz-calcite stringers mainly parallel to foliation. 1% pyrite.	E2722	126.57	126.92	.35	.07	-	-	.07
126.92	127.94	Intermediate porphyry. 5% quartz stringers, to 2 cm, at various angles. 8% pyrite.	E2723	126.92	127.94	1.02	.02	-	-	.02
127.94	128.50	Similar to 126.92 to 127.94.	E2724	127.94	128.50	.56	.05	-	-	.05
128.50	128.76	Intermediate porphyry. 4% pyrite.	E2725	128.50	128.76	.26	.02	-	-	.02
128.76	129.28	10% thin quartz-calcite stringers mainly parallel to foliation. 4% pyrite.	E2726	128.76	129.28	.52	.02	-	-	.02
133.37	134.26	3% thin quartz-calcite stringers at various angles. 3% pyrite.	E2727	133.37	134.26	.89	.00	-	-	-
134.26	134.52	A 2.5 cm quartz vein at 15 degrees. 5% pyrite	E2728	134.26	134.52	.26	.07	-	-	.07
134.52	134.94	2% thin quartz-calcite stringers at various angles. 4% pyrite.	E2729	134.52	134.94	.42	.10	-	-	.10
135.55	135.98	5% thin quartz-epidote stringers at various angles. 3% pyrite.	E2730	135.55	135.98	.43	.00	-	-	-
136.86	137.27	4% thin quartz-epidote stringers at various angles. 1% pyrite.	E2731	136.86	137.27	.41	.12	-	-	.12
138.66	139.76	3 to 5% thin quartz-epidote stringers at various angles. 1% pyrite and 1% pyrrhotite.	E2732	138.66	139.76	1.10	.09	-	-	.09
140.84	141.69	5% thin quartz-epidote stringers at various angles.	E2733	140.84	141.69	.85	.02	-	-	.02
141.69	142.33	8% thin quartz-calcite stringers at various angles. 4% pyrite.	E2734	141.69	142.33	.64	.28	-	-	.28
142.33	142.89	Weakly conductive. 5% thin quartz-calcite stringers at various angles. 10% pyrite and 3% pyrrhotite.	E2735	142.33	142.89	.56	1.32	1.38	1.32	1.34
142.89	143.76	5% quartz-epidote stringers, to 1 cm, at various angles. 1% pyrite.	E2736	142.89	143.76	.87	.02	-	-	.02
146.29	147.29	5% thin quartz-epidote stringers at various angles. 2% pyrite.	E2737	146.29	147.29	1.00	.01	-	-	.01
147.29	147.69	Similar to 146.29 to 147.29.	E2738	147.29	147.69	.40	.07	-	-	.07
149.88	151.10	3 to 5% thin quartz-calcite stringers and quartz-epidote stringers, at various angles. 1% pyrite.	E2739	149.88	151.10	1.22	.21	.21	-	.21
151.48	152.11	5% thin quartz-calcite stringers at various angles. 2% pyrite.	E2740	151.48	152.11	.63	.18	-	-	.18
153.93	154.80	5% thin quartz-calcite stringers and quartz-epidote stringers, at various angles.	E2741	153.93	154.80	.87	.03	-	-	.03
155.50	156.02	3% thin quartz-calcite stringers at various angles. 3% pyrite.	E2742	155.50	156.02	.52	.13	-	-	.13
156.96	158.00	3 to 5% thin quartz-calcite stringers, to 1 cm, at various angles. 2% pyrite.	E2743	156.96	158.00	1.04	.03	-	-	.03
158.00	158.31	Similar to 156.96 to 158.00.	E2744	158.00	158.31	.31	.15	-	-	.15
162.36	163.20	10% epidote-quartz stringers, to 2 cm, at various angles.	E2745	162.36	163.20	.84	.00	-	-	-
164.00	165.02	10% thin epidote-quartz stringers and quartz stringers, mainly parallel to foliation. 1% pyrite.	E2746	164.00	165.02	1.02	.00	-	-	-
165.02	165.61	Similar to 164.00 to 165.02.	E2747	165.02	165.61	.59	.00	-	-	-
165.87	166.87	5% thin epidote-quartz stringers and quartz	E2748	165.87	166.87	1.00	.00	-	-	-

PLACER DOME INC.  
DIAMOND DRILL RECORD

HOLE NO: 346-002  
PAGE NO: 6

FROM	TO	-----DESCRIPTION-----	SAMPLE	FROM	TO	LENGTH	Au g/t	RERUN	REJECT	AVERAGE
		stringers at various angles. 1% pyrite.								
166.87	167.83	Similar to 165.87 to 166.87.	E2749	166.87	167.83	.96	.02	-	-	.02
167.83	168.83	Similar to 165.87 to 166.87.	E2750	167.83	168.83	1.00	.00	-	-	-
168.83	169.83	Similar to 165.87 to 166.87.	E2751	168.83	169.83	1.00	.01	-	-	.01
169.83	170.85	Similar to 165.87 to 166.87.	E2752	169.83	170.85	1.02	.00	-	-	-
170.85	171.54	Similar to 165.87 to 166.87.	E2753	170.85	171.54	.69	.06	.07	-	.06
175.08	176.11	Locally epidote-rich. 3 to 5% thin quartz-epidote stringers and quartz stringers at various angles. 2% pyrite.	E2754	175.08	176.11	1.03	.00	-	-	-
176.11	177.10	Similar to 175.08 to 176.11.	E2755	176.11	177.10	.99	.01	-	-	.01
177.10	178.10	Similar to 175.08 to 176.11.	E2756	177.10	178.10	1.00	.10	-	-	.10
178.10	178.68	Similar to 175.08 to 176.11, but with 5% pyrite.	E2757	178.10	178.68	.58	.24	-	-	.24
180.22	181.24	10% thin quartz-calcite stringers, quartz-epidote stringers and augen, mainly parallel to foliation. 3% pyrite.	E2758	180.22	181.24	1.02	.71	.63	-	.67
181.24	182.00	Similar to 180.22 to 181.24.	E2759	181.24	182.00	.76	.22	-	-	.22
182.00	182.99	5% thin quartz-calcite stringers and epidote-quartz stringers, mainly parallel to foliation. 3% pyrite.	E2760	182.00	182.99	.99	.01	-	-	.01
182.99	183.98	Similar to 182.00 to 182.99.	E2761	182.99	183.98	.99	.01	-	-	.01
183.98	185.00	Similar to 182.00 to 182.99.	E2762	183.98	185.00	1.02	.03	-	-	.03
185.00	186.34	1% thin quartz-calcite stringers at various angles. 4% pyrite.	E2763	185.00	186.34	1.34	.05	-	-	.05
189.01	189.48	2% thin quartz-calcite stringers at various angles. 3% pyrite.	E2764	189.01	189.48	.47	.03	-	-	.03
194.83	195.88	5% quartz-calcite stringers, to 2 cm, at various angles. 3% pyrite.	E2765	194.83	195.88	1.05	.00	-	-	-
197.50	198.47	3% thin quartz-calcite stringers at various angles. 1% pyrite.	E2766	197.50	198.47	.97	.00	-	-	-
198.47	199.27	Similar to 197.50 to 198.47.	E2767	198.47	199.27	.80	.00	-	-	-
199.27	200.54	5% thin quartz-calcite stringers mainly parallel to foliation. 5% pyrite.	E2768	199.27	200.54	1.27	.49	-	-	.49
200.80	201.61	3% thin quartz-calcite stringers mainly at 55 degrees. 3% pyrite.	E2769	200.80	201.61	.81	.02	-	-	.02
201.61	202.25	Locally bleached. 5% thin quartz-calcite stringers at various angles. 3% pyrite.	E2770	201.61	202.25	.64	.00	-	-	-
202.28	202.51	5% quartz-calcite stringers, to 2 cm, mainly at 60 degrees. 1% pyrite.	E2771	202.28	202.51	.23	.01	-	-	.01
203.62	204.82	Bleached. 3% thin quartz stringers at various angles. 8% pyrite.	E2772	203.62	204.82	1.20	1.99	2.09	2.29	2.16
204.82	205.81	5% thin quartz-calcite stringers mainly at 30 degrees. 5% pyrite.	E2773	204.82	205.81	.99	.18	-	-	.18
205.81	206.31	Similar to 204.82 to 205.81.	E2774	205.81	206.31	.50	.42	-	-	.42
206.31	206.94	2% thin quartz-calcite stringers at various angles. 3% pyrite.	E2775	206.31	206.94	.63	.00	-	-	-
208.84	209.84	3% thin quartz-calcite stringers at various angles. 3% pyrite.	E2776	208.84	209.84	1.00	.00	-	-	-
209.84	210.84	Similar to 208.84 to 209.84.	E2777	209.84	210.84	1.00	.01	-	-	.01

PLACER DOME INC.  
DIAMOND DRILL RECORD

HOLE NO: 346-002  
PAGE NO: 7

FROM	TO	-----DESCRIPTION-----	SAMPLE	FROM	TO	LENGTH	Au g/t	RERUN	REJECT	AVERAGE
210.84	211.83	Similar to 208.84 to 209.84.	E2778	210.84	211.83	.99	.03	-	-	.03
211.83	212.53	Similar to 208.84 to 209.84.	E2779	211.83	212.53	.70	.02	-	-	.02
212.53	212.97	Bleached and locally brecciated. 8% quartz stringers and blebs, to 2 cm. 3% pyrite.	E2780	212.53	212.97	.44	.02	-	-	.02
212.97	213.95	Locally bleached. 5% thin quartz-calcite stringers at various angles. 3% pyrite.	E2781	212.97	213.95	.98	.04	-	-	.04
213.95	214.95	Similar to 212.97 to 213.95.	E2782	213.95	214.95	1.00	.01	-	-	.01
214.95	215.92	Similar to 212.97 to 213.95.	E2783	214.95	215.92	.97	.00	-	-	-
215.92	217.05	Similar to 212.97 to 213.95.	E2784	215.92	217.05	1.13	.03	-	-	.03
217.05	218.04	Locally bleached. 2% thin quartz-calcite stringers at various angles. 2% pyrite.	E2785	217.05	218.04	.99	.00	-	-	-
218.04	219.35	Similar to 217.05 to 218.04.	E2786	218.04	219.35	1.31	.03	-	-	.03
219.35	220.60	Similar to 217.05 to 218.04.	E2787	219.35	220.60	1.25	.06	-	-	.06
221.28	221.44	10% quartz stringers, to 1 cm.	E2788	221.28	221.44	.16	.01	-	-	.01
223.40	223.62	5% thin quartz stringers at various angles. 1% pyrite.	E2789	223.40	223.62	.22	.02	-	-	.02
225.60	225.92	5% thin quartz-calcite stringers at various angles. 4% pyrite.	E2790	225.60	225.92	.32	.22	.23	-	.22
225.92	226.33	3% thin quartz-calcite stringers at various angles. 5% pyrite.	E2791	225.92	226.33	.41	.07	-	-	.07
226.33	226.94	Locally bleached and brecciated. 2% thin quartz-calcite stringers at various angles. 3% pyrite.	E2792	226.33	226.94	.61	.05	-	-	.05
226.94	227.64	2% thin quartz-calcite stringers at various angles. 4% pyrite.	E2793	226.94	227.64	.70	.01	-	-	.01
228.31	229.31	2% thin quartz-calcite stringers at various angles. 2% pyrite.	E2794	228.31	229.31	1.00	.00	-	-	-
229.31	230.00	Similar to 228.31 to 229.31.	E2795	229.31	230.00	.69	.01	-	-	.01

230.00 END OF HOLE

CASING PULLED.

DRILLING BY BRADLEY BROS. DRILLING, NORANDA, QUEBEC.

CORE STORED AT DOME MINES, SOUTH PORCUPINE, ONTARIO.

CORE CHECKED FOR RADIOACTIVITY AND FLUORESCENCE. SOME CALCITE FLUORESCES RED.

*John M. Morgan*



REF CORD: 10625.0 7300.0 SURVEYED: ND

PLACER DOME INC.

LOCATION: 6+25N 27+00W GRID: NORTH-SOUTH

DIAMOND DRILL RECORD

HOLE NO: 346-003

POST LOCATION: 204 M. NORTH AND 160 M. EAST TO NO. 1 POST.

PROPERTY: PROJECT 346  
BLAKELOCK TWP., ONTARIO

AZIMUTH: 180.0

LENGTH: 225.0

ELEVATION: .0

LOGGED BY: D. HUNT

DIP: -50.0

CORE SIZE: B0

SYSTEM OF MEASURE: METRIC

DATE LOGGED: AUGUST 19 -21, 1988

STARTED: AUGUST 18, 1988

COMPLETED: AUGUST 21, 1988

CLAIM NO: L.848393

PURPOSE: TO TEST AN EM ANOMALY.

DIP TESTS (corrected)

DEPTH	AZIMUTH	DIP	DEPTH	AZIMUTH	DIP
10.00		-50.0	225.00		-37.3

FROM	TO	DESCRIPTION	SAMPLE	FROM	TO	LENGTH	RD	DIP	RETN	REJECT	AVERAGE
.00	10.00	CASING IN OVERBURDEN									
10.00	42.62	INTERMEDIATE TO FELSIC INTRUSIVE Medium purplish green, moderately soft to hard, fine to coarse grained. Locally weakly to strongly magnetic. Locally brecciated. Locally foliated at 30 to 65 degrees. Weakly conductive 10.80 to 12.64, 18.01 to 18.90, 20.91 to 21.35, 21.75 to 22.28, 25.84 to 26.13, 28.83 to 30.61. 10.00 10.80 2% thin quartz stringers at various angles. 5% pyrite and 2% pyrrhotite. 10.80 11.79 Locally conductive. 10% pyrite and 3% pyrrhotite. 11.79 12.64 Locally conductive. 3% pyrite and 2% pyrrhotite 13.07 14.07 3% thin quartz stringers, to 1 cm, at various angles. 3% pyrite and 2% pyrrhotite. 14.07 14.44 Similar to 13.07 to 14.07. 16.57 17.57 3% quartz stringers, to 1 cm, mainly parallel to foliation. 3% pyrite and 1% pyrrhotite. 17.57 18.01 Similar to 16.57 to 17.57. 18.01 18.68 Conductive. 5% pyrite and 2% pyrrhotite, mainly in bands parallel to foliation. 18.68 18.90 A 5 cm quartz vein at 35 degrees. 10% pyrite and 5% pyrrhotite. 18.90 19.73 4% thin quartz stringers, mainly parallel to foliation. 3% pyrite and 2% pyrrhotite. 19.73 20.00 A 1 cm quartz vein at 50 degrees. 2% pyrite and 1% pyrrhotite. 20.00 20.91 2% thin quartz stringers at various angles. 3% pyrite and 2% pyrrhotite. 20.91 21.35 Conductive. 10% pyrrhotite and 5% pyrite.	E2796	10.00	10.80	.80	.02	-	-	.02	
			E2797	10.80	11.79	.99	.02	-	-	.02	
			E2798	11.79	12.64	.85	.00	-	-	-	
			E2799	13.07	14.07	1.00	.00	-	-	-	
			E2800	14.07	14.44	.37	.00	-	-	-	
			E2801	16.57	17.57	1.00	.00	-	-	-	
			E2802	17.57	18.01	.44	.00	-	-	-	
			E2803	18.01	18.68	.67	.00	-	-	-	
			E2804	18.68	18.90	.22	.04	.06	-	.05	
			E2805	18.90	19.73	.83	.00	-	-	-	
			E2806	19.73	20.00	.27	.00	-	-	-	
			E2807	20.00	20.91	.91	.00	-	-	-	
			E2808	20.91	21.35	.44	.00	-	-	-	

ONTARIO GEOLOGICAL SURVEY  
ASSESSMENT FILES  
OFFICE  
JAN 27 1989  
RECEIVED

PLACER DOME INC.  
DIAMOND DRILL RECORD

HOLE NO: 346-003  
PAGE NO: 2

FROM	TO	-----DESCRIPTION-----	SAMPLE	FROM	TO	LENGTH	Au g/t	RERUN	REJECT	AVERAGE
21.75	22.28	Conductive. 8% pyrite and 5% pyrrhotite.	E2809	21.75	22.28	.53	.00	-	-	-
22.28	23.29	3% thin quartz stringers at various angles. 3% pyrite and 1% pyrrhotite.	E2810	22.28	23.29	1.01	.00	-	-	-
23.29	24.33	Similar to 22.28 to 23.29.	E2811	23.29	24.33	1.04	.00	-	-	-
24.33	25.53	Similar to 22.28 to 23.29.	E2812	24.33	25.53	1.20	.00	-	-	-
25.53	25.84	A 4.5 cm quartz vein at 45 degrees. 5% pyrite and 5% pyrrhotite.	E2813	25.53	25.84	.31	.00	-	-	-
25.84	26.13	Conductive. 5% pyrrhotite and 3% pyrite.	E2814	25.84	26.13	.29	.00	-	-	-
26.13	27.14	2% pyrite and 2% pyrrhotite.	E2815	26.13	27.14	1.01	.01	-	-	.01
27.14	27.45	Similar to 26.13 to 27.14.	E2816	27.14	27.45	.31	.01	-	-	.01
28.83	29.83	Conductive. 2% thin quartz stringers at various angles. 2% pyrite and 2% pyrrhotite.	E2817	28.83	29.83	1.00	.01	-	-	.01
29.83	30.61	Similar to 28.83 to 29.83.	E2818	29.83	30.61	.78	.00	-	-	-
30.61	30.83	A 2.5 cm quartz vein at 45 degrees. 4% pyrite and 4% pyrrhotite.	E2819	30.61	30.83	.22	.02	.02	-	.02
30.83	31.89	4% thin quartz stringers at various angles. 2% pyrite and 2% pyrrhotite.	E2820	30.83	31.89	1.06	.00	-	-	-
31.89	32.13	A 2 cm quartz vein at 50 degrees. 4% pyrrhotite	E2821	31.89	32.13	.24	.00	-	-	-
32.13	33.15	3% thin quartz stringers mainly parallel to foliation. 1% pyrite and 1% pyrrhotite.	E2822	32.13	33.15	1.02	.00	-	-	-
33.15	34.15	Similar to 32.13 to 33.15.	E2823	33.15	34.15	1.00	.01	-	-	.01
34.15	35.12	Similar to 32.13 to 33.15.	E2824	34.15	35.12	.97	.02	-	-	.02
35.12	36.13	Similar to 32.13 to 33.15.	E2825	35.12	36.13	1.01	.00	-	-	-
36.13	36.95	Similar to 32.13 to 33.15.	E2826	36.13	36.95	.82	.00	-	-	-
36.95	37.39	5% thin quartz stringers mainly parallel to foliation. 3% pyrrhotite and 5% pyrite.	E2827	36.95	37.39	.44	.00	-	-	-
37.39	37.59	A 4 cm quartz vein at 30 degrees. 10% pyrite and 3% pyrrhotite.	E2828	37.39	37.59	.20	.00	-	-	-
37.59	38.10	6% pyrite and 2% pyrrhotite.	E2829	37.59	38.10	.51	.01	.01	-	.01
38.56	39.22	4% pyrite and 2% pyrrhotite.	E2830	38.56	39.22	.66	.00	-	-	-
39.22	39.43	A 1 cm quartz vein at 30 degrees. 5% pyrite.	E2831	39.22	39.43	.21	.00	-	-	-
39.43	40.43	3% thin quartz stringers at various angles. 4% pyrite and 1% pyrrhotite.	E2832	39.43	40.43	1.00	.00	-	-	-
40.43	41.43	Similar to 39.43 to 40.43.	E2833	40.43	41.43	1.00	.00	-	-	-
41.43	41.83	Similar to 39.43 to 40.43.	E2834	41.43	41.83	.40	.00	-	-	-
41.83	42.07	A 4 cm quartz vein at 30 degrees. 3% pyrite.	E2835	41.83	42.07	.24	.01	-	-	.01
42.07	42.62	3% thin quartz stringers at various angles. 2% pyrite.	E2836	42.07	42.62	.55	.00	-	-	-
42.62	86.60	HIGH-IRON THOLEIITIC BASALT Medium grey green, very fine to fine grained, soft to hard, weakly magnetic. Locally bleached. Locally foliated at 35 to 60 degrees. Intermediate porphyry, at 50 to 65 degrees, 66.71 to 68.60. Lower contact at 65 degrees.								
42.94	44.00	5% thin quartz stringers at various angles. 4% pyrite.	E2837	42.94	44.00	1.06	.00	-	-	-
44.57	45.41	3% thin quartz stringers at various angles. 3%	E2838	44.57	45.41	.84	.01	-	-	.01

PLACER DOME INC.  
DIAMOND DRILL RECORD

HOLE NO: 346-003  
PAGE NO: 3

FROM	TO	-----DESCRIPTION-----	SAMPLE	FROM	TO	LENGTH	Au g/t	RERUN	REJECT	AVERAGE
		pyrite.								
45.95	47.00	5% quartz stringers, to 2 cm, at various angles. 3% pyrite and 1% pyrrhotite.	E2839	45.95	47.00	1.05	.01	-	-	.01
47.00	47.85	Similar to 45.95 to 47.00.	E2840	47.00	47.85	.85	.00	-	-	-
48.64	49.40	2% pyrite and 1% pyrrhotite.	E2841	48.64	49.40	.76	.00	-	-	-
49.84	50.84	3% pyrrhotite and 2% pyrite.	E2842	49.84	50.84	1.00	.01	-	-	.01
50.84	51.02	A 2.5 cm quartz vein at 40 degrees. 5% pyrite and 1% pyrrhotite.	E2843	50.84	51.02	.18	.02	.00	-	.01
52.50	53.26	2% pyrrhotite and 2% pyrite.	E2844	52.50	53.26	.76	.00	-	-	-
53.26	53.87	3% thin quartz stringers at various angles. 2% pyrite and 2% pyrrhotite.	E2845	53.26	53.87	.61	.00	-	-	-
53.87	55.11	Similar to 52.87 to 53.87.	E2846	53.87	55.11	1.24	.00	-	-	-
55.41	56.41	2% thin quartz stringers at various angles. 2% pyrite and 2% pyrrhotite.	E2847	55.41	56.41	1.00	.00	-	-	-
56.41	57.21	Similar to 55.41 to 56.41.	E2848	56.41	57.21	.80	.00	-	-	-
59.91	60.71	8% thin quartz stringers at various angles. 6% pyrite and 2% pyrrhotite.	E2849	59.91	60.71	.80	.00	-	-	-
60.71	60.88	10% thin quartz-calcite stringers, mainly parallel to foliation. 1% pyrite and 1% pyrrhotite.	E2850	60.71	60.88	.17	.00	-	-	-
62.12	62.35	4% pyrrhotite.	E2851	62.12	62.35	.23	.02	-	-	.02
62.82	63.85	3 to 5% quartz stringers, to 1 cm, at various angles. 2% pyrite and 2% pyrrhotite.	E2852	62.82	63.85	1.03	.02	.00	-	.01
63.85	65.12	Similar to 62.82 to 63.85.	E2853	63.85	65.12	1.27	.01	-	-	.01
65.12	65.30	A 1 cm quartz vein at 30 degrees. 5% pyrite.	E2854	65.12	65.30	.18	.00	-	-	-
66.71	67.14	4% pyrite.	E2855	66.71	67.14	.43	.01	-	-	.01
67.14	68.14	10% quartz veins, to 14 cm, mainly at 40 degrees. 5% pyrite.	E2856	67.14	68.14	1.00	.01	-	-	.01
68.14	68.60	Similar to 67.14 to 68.14.	E2857	68.14	68.60	.46	.00	-	-	-
68.60	69.60	3% thin quartz stringers at various angles. 3% pyrite and 2% pyrrhotite.	E2858	68.60	69.60	1.00	.00	-	-	-
69.60	70.60	Similar to 68.60 to 69.60.	E2859	69.60	70.60	1.00	.00	-	-	-
70.60	71.58	Similar to 68.60 to 69.60.	E2860	70.60	71.58	.98	.00	-	-	-
71.58	72.58	Similar to 68.60 to 69.60.	E2861	71.58	72.58	1.00	.00	-	-	-
72.58	73.58	Similar to 68.60 to 69.60.	E2862	72.58	73.58	1.00	.00	-	-	-
73.58	74.58	Similar to 68.60 to 69.60.	E2863	73.58	74.58	1.00	.00	-	-	-
74.58	75.58	Similar to 68.60 to 69.60.	E2864	74.58	75.58	1.00	.00	-	-	-
75.58	76.10	Similar to 68.60 to 69.60.	E2865	75.58	76.10	.52	.00	-	-	-
76.10	76.39	20% quartz stringers, to 5 cm, at various angles. 10% pyrite.	E2866	76.10	76.39	.29	.00	-	-	-
76.39	77.39	3% thin quartz stringers at various angles. 3% pyrite and 2% pyrrhotite.	E2867	76.39	77.39	1.00	.00	-	-	-
77.39	78.40	Similar to 76.39 to 77.39.	E2868	77.39	78.40	1.01	.00	-	-	-
78.40	79.42	Similar to 76.39 to 77.39.	E2869	78.40	79.42	1.02	.00	-	-	-
79.42	80.42	Similar to 76.39 to 77.39.	E2870	79.42	80.42	1.00	.01	-	-	.01
80.42	81.28	Similar to 76.39 to 77.39.	E2871	80.42	81.28	.86	.00	-	-	-
81.28	81.70	15% quartz stringers, to 3 cm, at various angles. 3% pyrrhotite and 2% pyrite.	E2872	81.28	81.70	.42	.00	-	-	-
81.70	82.70	3% thin quartz stringers at various angles. 3% pyrrhotite and 3% pyrite.	E2873	81.70	82.70	1.00	.00	.01	-	.00

PLACER DOME INC.  
DIAMOND DRILL RECORD

HOLE NO: 346-003  
PAGE NO: 4

FROM	TO	-----DESCRIPTION-----	SAMPLE	FROM	TO	LENGTH	Au g/t	RERUN	REJECT	AVERAGE
82.70	83.71	Similar to 81.70 to 82.70.	E2874	82.70	83.71	1.01	.00	-	-	-
83.71	84.71	Similar to 81.70 to 82.70.	E2875	83.71	84.71	1.00	.01	-	-	.01
84.71	85.07	Similar to 81.70 to 82.70.	E2876	84.71	85.07	.36	.00	-	-	-
85.07	85.39	20% quartz stringers, to 4 cm, mainly at 35 degrees. 10% pyrrhotite and 5% pyrite.	E2877	85.07	85.39	.32	.01	-	-	.01
86.28	86.60	3% pyrite.	E2878	86.28	86.60	.32	.00	-	-	-
86.60	100.71	ARGILLITE And greywacke. Medium to dark grey, moderately hard to hard, very fine to fine grained, locally weakly magnetic. Locally garnetiferous. Bedding at 40 to 65 degrees. Locally contorted bedding. Tops up hole. Weakly conductive 86.60 to 86.82, 93.54 to 93.74, 99.58 to 100.71. Lower contact at 45 degrees.								
86.60	86.82	Weakly conductive. 5% pyrite and 5% pyrrhotite.	E2879	86.60	86.82	.22	.01	-	-	.01
86.82	87.26	4% pyrrhotite and 1% pyrite.	E2880	86.82	87.26	.44	.01	-	-	.01
87.26	88.27	3% thin quartz-calcite stringers at various angles. 2% pyrrhotite and 1% pyrite.	E2881	87.26	88.27	1.01	.01	-	-	.01
88.27	89.29	Similar to 87.26 to 88.27.	E2882	88.27	89.29	1.02	.01	.01	-	.01
89.29	90.29	Similar to 87.26 to 88.27.	E2883	89.29	90.29	1.00	.00	-	-	-
90.29	91.30	Similar to 87.26 to 88.27.	E2884	90.29	91.30	1.01	.00	-	-	-
91.30	91.79	Similar to 87.26 to 88.27.	E2885	91.30	91.79	.49	.00	-	-	-
91.79	92.44	5% pyrrhotite and 3% pyrite.	E2886	91.79	92.44	.65	.00	-	-	-
93.54	93.74	Locally conductive. Some graphite. 5% pyrrhotite.	E2887	93.54	93.74	.20	.00	-	-	-
98.51	98.73	Quartz-rich. 3% pyrrhotite and 2% pyrite.	E2888	98.51	98.73	.22	.00	-	-	-
99.58	100.71	Graphitic and locally weakly conductive. 10% quartz stringers, to 3 cm, at various angles. 10% pyrrhotite and 5% pyrite.	E2889	99.58	100.71	1.13	.00	-	-	-
100.71	225.00	HIGH-IRON THOLEIITIC BASALT Similar to 42.62 to 86.60. Locally foliated at 40 to 70 degrees. Conductive 196.32 to 201.05.								
100.71	101.33	Locally bleached. 10% thin quartz-calcite stringers at various angles. 3% pyrrhotite.	E2890	100.71	101.33	.62	.00	-	-	-
101.85	102.31	20% quartz-calcite stringers, to 2.5 cm, at various angles. 3% pyrrhotite and 1% pyrite.	E2891	101.85	102.31	.46	.00	-	-	-
108.43	109.19	3% thin quartz-calcite stringers at various angles. 3% pyrite.	E2892	108.43	109.19	.76	.00	-	-	-
109.19	110.00	3% thin quartz-calcite stringers at various angles.	E2893	109.19	110.00	.81	.00	-	-	-
110.58	111.14	3% thin quartz stringers at various angles. 3% pyrrhotite and 1% pyrite.	E2894	110.58	111.14	.56	.00	-	-	-
111.50	112.74	2% thin quartz-calcite stringers at various	E2895	111.50	112.74	1.24	.00	-	-	-

PLACER DOME INC.  
DIAMOND DRILL RECORD

HOLE NO: 346-003  
PAGE NO: 5

FROM	TO	DESCRIPTION	SAMPLE	FROM	TO	LENGTH	Au g/t	RERUN	REJECT	AVERAGE
		angles. 2% pyrrhotite and 1% pyrite.								
116.49	117.20	1% thin quartz-calcite stringers at various angles. 3% pyrrhotite.	E2896	116.49	117.20	.71	.00	-	-	-
117.59	118.61	3% thin quartz-calcite stringers at various angles. 3% pyrrhotite and 1% pyrite.	E2897	117.59	118.61	1.02	.00	-	-	-
118.61	119.36	Similar to 117.59 to 118.61.	E2898	118.61	119.36	.75	.00	-	-	-
119.36	120.36	Locally bleached. 3% pyrrhotite and 1% pyrite	E2899	119.36	120.36	1.00	.00	-	-	-
120.36	121.36	Similar to 119.36 to 120.36.	E2900	120.36	121.36	1.00	.00	-	-	-
121.36	122.37	Similar to 119.36 to 120.36.	E6001	121.36	122.37	1.01	.00	-	-	-
122.37	122.96	3% thin quartz-calcite stringers at various angles. 4% pyrite and 3% pyrrhotite.	E6002	122.37	122.96	.59	.02	-	-	.02
122.96	123.45	5% thin quartz-calcite stringers mainly parallel to foliation. 3% pyrite.	E6003	122.96	123.45	.49	.16	-	-	.16
123.45	123.97	10% quartz veins, to 4.5 cm, at various angles. 3% pyrite.	E6004	123.45	123.97	.52	.02	-	-	.02
124.39	125.38	2% thin quartz-calcite stringers at various angles. 2% pyrite and 2% pyrrhotite.	E6005	124.39	125.38	.99	.15	-	-	.15
125.89	127.01	4% thin quartz-calcite stringers at various angles. 2% pyrite and 2% pyrrhotite.	E6006	125.89	127.01	1.12	.02	-	-	.02
128.62	129.64	5% thin quartz-calcite stringers mainly parallel to foliation. 3% pyrite and 2% pyrrhotite.	E6007	128.62	129.64	1.02	.85	.82	-	.84
129.64	130.08	Similar to 128.62 to 129.64.	E6008	129.64	130.08	.44	.31	-	-	.31
132.66	133.01	5% thin quartz stringers mainly parallel to foliation. 3% pyrrhotite.	E6009	132.66	133.01	.35	.01	-	-	.01
135.20	136.08	3% thin quartz stringers mainly parallel to foliation. 3% pyrite.	E6010	135.20	136.08	.88	.00	-	-	-
137.10	137.91	3% thin quartz stringers mainly at 60 degrees. 2% pyrrhotite and 1% pyrite.	E6011	137.10	137.91	.81	.00	-	-	-
139.01	140.28	3% thin quartz stringers at various angles. 1% pyrite.	E6012	139.01	140.28	1.27	.00	-	-	-
144.77	145.26	5% thin quartz stringers at various angles. 4% pyrite and 2% pyrrhotite.	E6013	144.77	145.26	.49	.00	-	-	-
145.54	146.00	4% thin quartz-calcite stringers at various angles. 3% pyrrhotite.	E6014	145.54	146.00	.46	.00	-	-	-
147.90	148.90	Locally bleached. 3% thin quartz stringers at various angles. 2% pyrrhotite and 1% pyrite.	E6015	147.90	148.90	1.00	.00	-	-	-
148.90	149.32	Similar to 147.90 to 148.90.	E6016	148.90	149.32	.42	.00	-	-	-
150.33	151.60	3% thin quartz stringers at various angles. 2% pyrite and 2% pyrrhotite.	E6017	150.33	151.60	1.27	.00	-	-	-
152.00	153.00	Locally bleached. 3% thin quartz stringers at various angles. 2% pyrite and 2% pyrrhotite.	E6018	152.00	153.00	1.00	.01	-	-	.01
153.00	154.00	Similar to 152.00 to 153.00.	E6019	153.00	154.00	1.00	.00	-	-	-
154.00	154.67	Similar to 152.00 to 153.00.	E6020	154.00	154.67	.67	.00	-	-	-
155.75	156.54	Locally epidote-rich. 3% thin quartz stringers mainly at 65 degrees. 1% pyrite.	E6021	155.75	156.54	.79	.00	-	-	-
159.36	160.36	3% quartz stringers, to 1.5 cm, at various angles. 3% pyrite.	E6022	159.36	160.36	1.00	.00	-	-	-
160.36	161.40	Similar to 159.36 to 160.36.	E6023	160.36	161.40	1.04	.02	.02	-	.02
162.93	163.35	10% quartz stringers, to 2 cm, sub-parallel	E6024	162.93	163.35	.42	.02	-	-	.02

PLACER DOME INC.  
DIAMOND DRILL RECORD

HOLE NO: 346-003  
PAGE NO: 6

FROM	TO	DESCRIPTION	SAMPLE	FROM	TO	LENGTH	Au g/t	RERUN	REJECT	AVERAGE
		to core axis. 3% pyrite.								
164.18	165.34	5% thin quartz stringers, to 1 cm, at various angles. 3% pyrite.	D6025	164.18	165.34	1.16	-	-	-	-
166.49	166.91	5% pyrite.	E6026	166.49	166.91	.42	.05	-	-	.05
166.91	167.40	3% thin quartz-epidote stringers at various angles. 3% pyrite.	E6027	166.91	167.40	.49	.00	-	-	-
168.26	169.34	5% thin epidote-quartz stringers at various angles. 2% pyrite.	E6028	168.26	169.34	1.08	.00	-	-	-
169.75	170.64	5% thin quartz stringers and quartz-epidote stringers at various angles. 8% pyrite.	E6029	169.75	170.64	.89	.00	-	-	-
171.86	172.16	4% thin quartz stringers at various angles. 2% pyrite.	E6030	171.86	172.16	.30	.02	-	-	.02
173.95	174.74	Locally epidote-rich. 3% thin quartz stringers at various angles. 2% pyrite.	E6031	173.95	174.74	.79	.01	-	-	.01
176.00	176.91	Locally epidote-rich. 3% thin quartz stringers at various angles. 1% pyrite.	E6032	176.00	176.91	.91	.01	-	-	.01
177.39	178.48	3% thin quartz stringers at various angles. 3% pyrite.	E6033	177.39	178.48	1.09	.03	.03	-	.03
179.21	180.24	5% thin quartz stringers, mainly at 60 degrees. 4% pyrite.	E6034	179.21	180.24	1.03	.01	-	-	.01
180.24	180.83	Similar to 179.21 to 180.24.	E6035	180.24	180.83	.59	.02	-	-	.02
182.45	183.45	2% thin quartz stringers at various angles. 3% pyrite.	E6036	182.45	183.45	1.00	.00	-	-	-
183.45	184.45	Similar to 182.45 to 183.45.	E6037	183.45	184.45	1.00	.00	-	-	-
184.45	185.45	Similar to 182.45 to 183.45.	E6038	184.45	185.45	1.00	.01	-	-	.01
185.45	186.39	Similar to 182.45 to 183.45.	E6039	185.45	186.39	.94	.00	-	-	-
188.14	189.09	3% thin quartz stringers at various angles. 1% to pyrite.	E6040	188.14	189.09	.95	.00	-	-	-
190.33	191.33	3% quartz stringers, to 1 cm, at various angles. 2% pyrite.	E6041	190.33	191.33	1.00	.00	-	-	-
191.33	192.33	Similar to 190.33 to 191.33.	E6042	191.33	192.33	1.00	.00	-	-	-
192.33	193.36	Similar to 190.33 to 191.33.	E6043	192.33	193.36	1.03	.00	-	-	-
193.36	193.95	Similar to 190.33 to 191.33.	E6044	193.36	193.95	.59	.00	-	-	-
196.32	197.60	Conductive. 15% quartz stringers, to 4 cm, mainly at 45 degrees. 15% pyrrhotite and 5% pyrite.	E6045	196.32	197.60	1.28	.01	.01	-	.01
197.60	198.60	Conductive. 3% quartz stringers, to 1.5 cm, at various angles. 6% pyrrhotite and 4% pyrite.	E6046	197.60	198.60	1.00	.00	-	-	-
198.60	199.57	Similar to 197.60 to 198.60.	E6047	198.60	199.57	.97	.00	-	-	-
199.57	200.57	Similar to 197.60 to 198.60.	E6048	199.57	200.57	1.00	.00	-	-	-
200.57	201.05	Similar to 197.60 to 198.60.	E6049	200.57	201.05	.48	.00	-	-	-
201.49	202.00	2% thin quartz stringers at various angles. 3% pyrrhotite and 1% pyrite.	E6050	201.49	202.00	.51	.00	-	-	-
202.14	203.14	3% pyrrhotite and 2% pyrite.	E6051	202.14	203.14	1.00	.00	-	-	-
203.14	203.90	Similar to 202.14 to 203.14.	E6052	203.14	203.90	.76	.00	-	-	-
204.40	204.63	A 1 cm quartz stringer at 50 degrees. 3% pyrrhotite and 2% pyrite.	E6053	204.40	204.63	.23	.00	-	-	-
206.00	206.96	2% thin quartz stringers at various angles. 3% pyrite and 2% pyrrhotite.	E6054	206.00	206.96	.96	.01	-	-	.01
206.96	207.96	Similar to 206.00 to 206.96.	E6055	206.96	207.96	1.00	.00	-	-	-

PLACER DOME INC.  
DIAMOND DRILL RECORD

HOLE NO: 346-003  
PAGE NO: 7

FROM	TO	-----DESCRIPTION-----	SAMPLE	FROM	TO	LENGTH	Au g/t	RERUN	REJECT	AVERAGE
210.41	210.78	A 6 cm quartz vein at 40 degrees. 4% pyrrhotite and 1% pyrite.	E6056	210.41	210.78	.37	.01	-	-	.01
210.78	211.62	4% quartz-calcite stringers, to 2 cm, at various angles. 2% pyrite.	E6057	210.78	211.62	.84	.00	-	-	-
221.93	222.20	Locally epidote-rich. 5% thin quartz stringers at various angles.	E6058	221.93	222.20	.27	.00	-	-	-
223.73	224.51	10% quartz-calcite stringers, to 1 cm, at various angles. 3% pyrrhotite and 2% pyrite.	E6059	223.73	224.51	.78	.00	-	-	-

225.00 END OF HOLE

CASING LEFT IN HOLE.

DRILLING BY BRADLEY BROS. DRILLING, NORANDA, QUEBEC.

CORE STORED AT DOME MINES, SOUTH PORCUPINE, ONTARIO.

CORE CHECKED FOR RADIOACTIVITY AND FLUORESCENCE - NOTHING OF INTEREST.

*John M. Morgan*

REF CORD: 10825.0 7300.0 SURVEYED: NO

PLACER DOME INC.

LOCATION: 8+25N 27+00W GRID: NORTH-SOUTH

DIAMOND DRILL RECORD

POST LOCATION: 12 M. SOUTH AND 160 M. EAST TO NO. 2 POST.

HOLE NO: 346-004  
PROPERTY: PROJECT 346  
BLAKELOCK TWP., ONTARIO  
SECTION:

AZIMUTH: 180.0 LENGTH: 201.0 ELEVATION: .0

LOGGED BY: D. HUNT

DIP: -50.0 CORE SIZE: 80 SYSTEM OF MEASURE: METRIC

DATE LOGGED: AUGUST 22-24

STARTED: AUGUST 21, 1988 COMPLETED: AUGUST 23, 1988 CLAIM NO: L.848394-16m; L.848393-185m

PURPOSE: TO TEST VLF CONDUCTOR AT 7+75N, 27+00W.

DIP TESTS (corrected)

DEPTH AZIMUTH DIP DEPTH AZIMUTH DIP  
18.00 52.2 200.00 40.0

FROM	TO	DESCRIPTION	SAMPLE	FROM	TO	LENGTH	AUG	RESUN	REJECT	AVERAGE
.00	13.08	CASINGS IN OVERBURDEN								
13.08	33.46	HIGH-IRON THOLEIITIC BASALT Medium grey green, very fine to coarse grained, soft to hard, locally weakly to moderately magnetic. Locally garnetiferous. Locally foliated at 65 to 80 degrees to core axis. Lower contact at 80 degrees.								
	13.08	13.85 5% quartz stringers, to 1 cm, at various angles. 3% pyrite.	E6060	13.08	13.85	.77	.00	-	-	-
	20.65	21.57 3% thin quartz-calcite stringers at various angles.	E6061	20.65	21.57	.92	.01	-	-	.01
	22.13	22.42 5% quartz stringers, to 1 cm, at various angles. 4% pyrite.	E6062	22.13	22.42	.29	.01	-	-	.01
	32.53	33.17 4% quartz stringers, to 1 cm, parallel to foliation. 1% pyrite.	E6063	32.53	33.17	.64	.01	-	-	.01
	33.17	33.46 4% thin quartz-calcite stringers, mainly parallel to foliation. 5% pyrite.	E6064	33.17	33.46	.29	.02	-	-	.02
33.46	56.39	CALC-ALKALIC DACITE Tuff. Pale grey green, very fine to fine grained, soft to hard, weakly to moderately magnetic. Banding and foliation at 60 to 80 degrees. Locally conductive 34.74 to 51.94. Lower contact at 75 degrees.								
	33.46	34.74 3% thin quartz-calcite stringers mainly parallel to foliation. 3% pyrite.	E6065	33.46	34.74	1.28	.01	-	-	.01
	34.74	35.66 Conductive. 8% pyrite and 2% pyrrhotite.	E6066	34.74	35.66	.92	.01	.01	-	.01
	35.66	36.66 Conductive. 15% pyrite and 5% pyrrhotite.	E6067	35.66	36.66	1.00	.02	-	-	.02
	36.66	37.13 Similar to 35.66 to 36.66.	E6068	36.66	37.13	.47	.01	-	-	.01

ONTARIO GEOLOGICAL SURVEY  
ASSESSMENT FILES  
OFFICE  
JAN 27 1989  
RECEIVED



PLACER DOME INC.  
DIAMOND DRILL RECORD

HOLE NO: 346-004  
PAGE NO: 2

FROM	TO	-----DESCRIPTION-----	SAMPLE	FROM	TO	LENGTH	Au g/t	RERUN	REJECT	AVERAGE
37.13	37.67	2% pyrrhotite and 1% pyrite.	E6069	37.13	37.67	.54	.00	-	-	-
37.67	37.94	Conductive. 15% pyrite and 5% pyrrhotite.	E6070	37.67	37.94	.27	.02	-	-	.02
37.94	38.61	4% pyrite and 2% pyrrhotite.	E6071	37.94	38.61	.67	.01	-	-	.01
38.61	39.61	3% pyrrhotite and 2% pyrite.	E6072	38.61	39.61	1.00	.00	-	-	-
39.61	40.50	Similar to 38.61 to 39.61.	E6073	39.61	40.50	.89	.01	-	-	.01
40.50	41.50	Conductive. 3% quartz stringers, to 1.5 cm, mainly parallel to foliation. 8% pyrite and 7% pyrrhotite.	E6074	40.50	41.50	1.00	.01	-	-	.01
41.50	42.50	Similar to 40.50 to 41.50.	E6075	41.50	42.50	1.00	.01	-	-	.01
42.50	42.96	Similar to 40.50 to 41.50.	E6076	42.50	42.96	.46	.01	-	-	.01
42.96	44.18	4% pyrite and 4% pyrrhotite.	E6077	42.96	44.18	1.22	.02	-	-	.02
44.18	45.26	3% pyrrhotite and 2% pyrite.	E6078	44.18	45.26	1.08	.01	-	-	.01
45.26	46.47	Locally conductive. 6% pyrite and 4% pyrrhotite	E6079	45.26	46.47	1.21	.01	-	-	.01
46.47	47.49	Conductive. 10% pyrite and 5% pyrrhotite.	E6080	46.47	47.49	1.02	.02	.02	-	.02
47.49	48.49	Similar to 46.47 to 47.49.	E6081	47.49	48.49	1.00	.02	-	-	.02
48.49	49.49	Similar to 46.47 to 47.49.	E6082	48.49	49.49	1.00	.02	-	-	.02
49.49	50.12	Similar to 46.47 to 47.49.	E6083	49.49	50.12	.63	.01	-	-	.01
50.12	51.12	5% pyrite and 3% pyrrhotite.	E6084	50.12	51.12	1.00	.00	-	-	-
51.12	51.47	Similar to 50.12 to 51.12.	E6085	51.12	51.47	.35	.00	-	-	-
51.47	51.94	Conductive. 5% pyrite and 5% pyrrhotite.	E6086	51.47	51.94	.47	.03	-	-	.03
51.94	53.00	3% pyrrhotite and 2% pyrite.	E6087	51.94	53.00	1.06	.00	-	-	-
53.00	54.06	3% pyrrhotite and 3% pyrite.	E6088	53.00	54.06	1.06	.00	-	-	-
54.06	55.08	2% quartz stringer, to 1 cm, mainly parallel to foliation. 2% pyrite and 2% pyrrhotite.	E6089	54.06	55.08	1.02	.00	-	-	-
55.08	56.00	Similar to 54.06 to 55.08.	E6090	55.08	56.00	.92	.01	.01	-	.01
56.00	56.39	4% pyrite and 3% pyrrhotite.	E6091	56.00	56.39	.39	.01	-	-	.01
56.39	110.05	HIGH-IRON THOLEIITIC BASALT Medium grey green, very fine grained, soft to hard, weakly to moderately magnetic. Locally foliated at 65 to 80 degrees. Intermediate porphyry dykes, at 60 to 85 degrees 87.79 to 88.92, and at 35 to 65 degrees 92.42 to 95.16. Locally conductive 88.92 to 89.78. Lower contact at 65 degrees.								
56.39	57.42	5% pyrrhotite and 5% pyrite.	E6092	56.39	57.42	1.03	.01	-	-	.01
57.42	58.41	Similar to 56.39 to 57.42.	E6093	57.42	58.41	.99	.00	-	-	-
58.41	59.41	Similar to 56.39 to 57.42.	E6094	58.41	59.41	1.00	.00	-	-	-
59.41	60.57	Similar to 56.39 to 57.42.	E6095	59.41	60.57	1.16	.00	-	-	-
61.78	62.77	2% quartz stringers, to 1 cm, at various angles. 2% pyrite and 2% pyrrhotite.	E6096	61.78	62.77	.99	.01	-	-	.01
62.77	63.82	Similar to 61.78 to 62.77.	E6097	62.77	63.82	1.05	.01	-	-	.01
63.82	65.00	Similar to 61.78 to 62.77.	E6098	63.82	65.00	1.18	.00	-	-	-
65.61	66.06	3% thin quartz-calcite stringers at various angles. 3% pyrrhotite and 2% pyrite.	E6099	65.61	66.06	.45	.01	-	-	.01
66.92	67.92	3% pyrrhotite and 2% pyrite.	E6100	66.92	67.92	1.00	.01	-	-	.01
67.92	68.21	Similar to 66.92 to 67.92.	E6101	67.92	68.21	.29	.00	-	-	-
68.98	69.98	4% thin quartz-calcite stringers mainly parallel to foliation. 3% pyrite and 2% pyrrhotite.	E6102	68.98	69.98	1.00	.00	-	-	-

PLACER DOME INC.  
DIAMOND DRILL RECORD

HOLE NO: 346-004  
PAGE NO: 3

FROM	TO	-----DESCRIPTION-----	SAMPLE	FROM	TO	LENGTH	Au g/t	RERUN	REJECT	AVERAGE
69.98	71.00	Similar to 68.98 to 69.98.	E6103	69.98	71.00	1.02	.02	-	-	.02
71.00	72.00	5% thin quartz-calcite stringers mainly parallel to foliation. 2% pyrite and 1% pyrrhotite.	E6104	71.00	72.00	1.00	.03	.03	-	.03
72.00	73.00	Similar to 71.00 to 72.00.	E6105	72.00	73.00	1.00	.01	-	-	.01
73.00	73.35	Similar to 71.00 to 72.00.	E6106	73.00	73.35	.35	.01	-	-	.01
73.35	73.76	3% thin quartz stringers at various angles. 8% pyrite and 3% pyrrhotite.	E6107	73.35	73.76	.41	.02	-	-	.02
73.76	74.81	2% pyrite and 2% pyrrhotite.	E6108	73.76	74.81	1.05	.00	-	-	-
74.81	75.81	5% quartz-calcite stringers, to 1.5 cm, at various angles. 3% pyrite and 2% pyrrhotite.	E6109	74.81	75.81	1.00	.02	-	-	.02
75.81	76.04	Similar to 74.81 to 75.81.	E6110	75.81	76.04	.23	.00	-	-	-
77.39	78.42	3% thin quartz-calcite stringers at various angles. 2% pyrrhotite and 1% pyrite.	E6111	77.39	78.42	1.03	.01	-	-	.01
78.42	79.14	Similar to 77.39 to 78.42.	E6112	78.42	79.14	.72	.02	-	-	.02
81.11	82.10	4% quartz-calcite stringers, to 1 cm, at various angles. 3% pyrrhotite and 2% pyrite.	E6113	81.11	82.10	.99	.00	-	-	-
82.10	83.00	Similar to 81.11 to 82.10.	E6114	82.10	83.00	.90	.01	-	-	.01
83.94	84.57	10% quartz stringers, to 2 cm, at various angles. 1% pyrite and 1% pyrrhotite.	E6115	83.94	84.57	.63	.02	-	-	.02
85.27	86.27	5% quartz stringers, to 1 cm, at various angles. 1% pyrite.	E6116	85.27	86.27	1.00	.01	-	-	.01
86.27	87.25	Similar to 85.27 to 86.27.	E6117	86.27	87.25	.98	.01	-	-	.01
87.25	87.79	15% quartz-calcite stringers, to 3 cm, at various angles.	E6118	87.25	87.79	.54	.01	-	-	.01
87.79	88.92	Intermediate dyke. 5% pyrite.	E6119	87.79	88.92	1.13	.06	.03	-	.04
88.92	89.78	Locally conductive. 5% quartz-calcite stringers, to 1 cm, mainly parallel to foliation. 7% pyrrhotite and 3% pyrite.	E6120	88.92	89.78	.86	.03	-	-	.03
89.78	90.78	5% quartz-calcite stringers, to 1.5 cm, mainly parallel to foliation. 2% pyrrhotite and 2% pyrite.	E6121	89.78	90.78	1.00	.01	-	-	.01
90.78	91.79	Similar to 89.78 to 90.78.	E6122	90.78	91.79	1.01	.01	-	-	.01
92.94	93.55	Intermediate porphyry. 3% quartz stringers, to 2 cm, at 50 degrees. 1% pyrite.	E6123	92.94	93.55	.61	.00	-	-	-
93.55	94.55	Intermediate porphyry. 2% pyrite.	E6124	93.55	94.55	1.00	.00	-	-	-
94.55	95.16	Similar to 93.55 to 94.55.	E6125	94.55	95.16	.61	.02	-	-	.02
95.16	95.45	3% thin quartz stringers at various angles. 3% pyrite and 2% pyrrhotite.	E6126	95.16	95.45	.29	.00	-	-	-
95.74	96.33	2% thin quartz stringers at various angles. 3% pyrite.	E6127	95.74	96.33	.59	.00	-	-	-
96.77	97.51	3% thin quartz stringers, mainly parallel to foliation. 5% pyrite and 3% pyrrhotite.	E6128	96.77	97.51	.74	.00	-	-	-
98.00	98.70	20% quartz veins, to 6.5 cm, at various angles. 8% pyrite.	E6129	98.00	98.70	.70	.00	-	-	-
99.57	100.55	3% thin quartz-calcite-epidote stringers at various angles. 3% pyrite and 1% pyrrhotite.	E6130	99.57	100.55	.98	.00	-	-	-
101.89	102.50	3% thin quartz-calcite stringers at various angles. 4% pyrite.	E6131	101.89	102.50	.61	.00	-	-	-
103.89	104.37	5% quartz stringers, to 1 cm, at various angles. 4% pyrite and 2% pyrrhotite.	E6132	103.89	104.37	.48	.00	-	-	-

PLACER DOME INC.  
DIAMOND DRILL RECORD

HOLE NO: 346-004  
PAGE NO: 4

FROM	TO	-----DESCRIPTION-----	SAMPLE	FROM	TO	LENGTH	Au g/t	RERUN	REJECT	AVERAGE
107.05	107.46	40% quartz-calcite stringers, to 9 cm, mainly parallel to foliation. 1% pyrrhotite and 1% pyrite.	E6133	107.05	107.46	.41	.03	-	-	.03
107.95	108.98	5% quartz-calcite stringers, to 1.5 cm, mainly parallel to foliation. 1% pyrrhotite and 1% pyrite.	E6134	107.95	108.98	1.03	.00	-	-	-
108.98	110.05	Similar to 107.95 to 108.98.	E6135	108.98	110.05	1.07	.01	-	-	.01
110.05	120.46	GRANDDIORITE Medium grey to medium grey pink, medium to coarse grained, hard. Lower contact at 55 degrees.								
110.05	111.05	3% pyrite.	E6136	110.05	111.05	1.00	.04	-	-	.04
111.05	111.51	Similar to 110.05 to 111.05.	E6137	111.05	111.51	.46	.07	.06	-	.06
111.51	112.43	Similar to 110.05 to 111.05.	E6138	111.51	112.43	.92	.03	-	-	.03
112.43	112.70	A 10 cm quartz vein at 40 degrees. 3% pyrite.	E6139	112.43	112.70	.27	.02	-	-	.02
112.70	113.05	3% pyrite.	E6140	112.70	113.05	.35	.01	-	-	.01
113.05	113.64	A 40 cm quartz vein at 30 degrees. 3% pyrite.	E6141	113.05	113.64	.59	.02	-	-	.02
113.64	114.61	3% pyrite.	E6142	113.64	114.61	.97	.00	-	-	-
114.61	115.18	Similar to 113.64 to 114.61.	E6143	114.61	115.18	.57	.02	-	-	.02
115.18	116.24	5% quartz stringers, to 2 cm, at various angles. 4% pyrite.	E6144	115.18	116.24	1.06	.03	-	-	.03
116.24	117.24	4% pyrite.	E6145	116.24	117.24	1.00	.00	-	-	-
117.24	117.75	Similar to 116.24 to 117.24.	E6146	117.24	117.75	.51	.02	-	-	.02
117.75	118.75	5% quartz stringers, to 8 cm, at various angles. 3% pyrite.	E6147	117.75	118.75	1.00	.01	-	-	.01
118.75	119.73	Similar to 117.75 to 118.75.	E6148	118.75	119.73	.98	.00	-	-	-
119.73	120.46	Similar to 117.75 to 118.75.	E6149	119.73	120.46	.73	.05	-	-	.05
120.46	201.00	HIGH-IRON THOLEIITIC BASALT Similar to 56.39 to 110.05. Locally foliated at 50 to 80 degrees. Fault gouge, at 30 degrees, at 160.54. No core recovery 176.00 to 176.42. Locally conductive 199.86 to 200.54.								
123.93	124.82	Locally epidote-rich. 3% thin quartz-calcite stringers at various angles. 3% pyrite.	E6150	123.93	124.82	.89	.01	-	-	.01
125.96	126.96	Locally brecciated and epidote-rich. 3 to 5% quartz-calcite stringers, to 1.5 cm, at various angles. 4% pyrite.	E6151	125.96	126.96	1.00	.01	-	-	.01
126.96	127.96	Similar to 125.96 to 126.96.	E6152	126.96	127.96	1.00	.07	.03	-	.05
127.96	128.94	Similar to 125.96 to 126.96.	E6153	127.96	128.94	.98	.04	-	-	.04
128.94	129.98	Similar to 125.96 to 126.96.	E6154	128.94	129.98	1.04	.03	-	-	.03
129.98	130.25	A 12 cm quartz vein at 30 to 80 degrees. 3% pyrite.	E6155	129.98	130.25	.27	.01	-	-	.01
133.22	133.80	4% quartz stringers, to 1 cm, at 40 to 70 degrees. 3% pyrite.	E6156	133.22	133.80	.58	.01	-	-	.01
137.85	138.94	2% thin quartz-calcite stringers at various angles. 3% pyrite.	E6157	137.85	138.94	1.09	.02	-	-	.02

PLACER DOME INC.  
DIAMOND DRILL RECORD

HOLE NO: 346-004  
PAGE NO: 5

FROM	TO	-----DESCRIPTION-----	SAMPLE	FROM	TO	LENGTH	Au g/t	RERUN	REJECT	AVERAGE
145.55	146.28	Locally brecciated. 3% thin quartz-calcite stringers at various angles. 2% pyrrhotite and 1% pyrite.	E6158	145.55	146.28	.73	.01	-	-	.01
147.03	148.03	3% thin quartz-calcite stringers at various angles. 3% pyrite.	E6159	147.03	148.03	1.00	.01	-	-	.01
149.25	149.59	5% quartz stringers, to 1 cm, at 25 degrees. 4% pyrite.	E6060	149.25	149.59	.34	.00	-	-	-
153.97	155.00	3% thin quartz-calcite stringers at various angles. 3% pyrite.	E6161	153.97	155.00	1.03	.01	-	-	.01
155.00	155.99	Similar to 153.97 to 155.00.	E6162	155.00	155.99	.99	.00	-	-	-
155.99	156.36	Similar to 153.97 to 155.00.	E6163	155.99	156.36	.37	.00	-	-	-
158.23	158.71	3% thin quartz-calcite stringers at various angles. 2% pyrrhotite and 1% pyrite.	E6164	158.23	158.71	.48	.00	-	-	-
159.32	160.10	3% quartz stringers, to 1 cm, at various angles. 1% pyrite.	E6165	159.32	160.10	.78	.00	-	-	-
161.61	161.98	3% thin quartz-calcite stringers at various angles. 2% pyrrhotite and 1% pyrite.	E6166	161.61	161.98	.37	.00	-	-	-
163.08	164.16	5% quartz-calcite stringers, to 3.5 cm, at various angles.	E6167	163.08	164.16	1.08	.00	-	-	-
166.90	167.74	3% thin quartz-calcite stringers at various angles. 3% pyrite and 1% pyrrhotite.	E6168	166.90	167.74	.84	.00	-	-	-
173.00	173.73	2% thin quartz-calcite stringers, mainly at 35 degrees. 1% pyrrhotite and 1% pyrite.	E6169	173.00	173.73	.73	.00	-	-	-
177.55	178.55	3% quartz-calcite stringers, to 1 cm, at various angles. 1% pyrite and 1% pyrrhotite.	E6170	177.55	178.55	1.00	.01	-	-	.01
178.55	179.51	Similar to 177.55 to 178.55.	E6171	178.55	179.51	.96	.00	-	-	-
180.15	181.29	5% thin quartz-calcite stringers at various angles. 2% pyrrhotite and 2% pyrite.	E6172	180.15	181.29	1.14	.04	.04	-	.04
189.06	189.42	8% quartz stringers, to 1.5 cm, at various angles. 3% pyrite and 2% pyrrhotite.	E6173	189.06	189.42	.36	.00	-	-	-
190.73	191.88	3% thin quartz-calcite stringers at various angles. 1% pyrite and 1% pyrrhotite.	E6174	190.73	191.88	1.15	.00	-	-	-
194.70	195.70	5% quartz stringers, to 1.5 cm, at various angles. 1% pyrite and 1% pyrrhotite.	E6175	194.70	195.70	1.00	.01	-	-	.01
195.70	196.64	Similar to 194.70 to 195.70.	E6176	195.70	196.64	.94	.00	-	-	-
199.86	200.54	Locally conductive. 3% thin quartz stringers mainly parallel to foliation. 10% pyrrhotite and 5% pyrite.	E6177	199.86	200.54	.68	.00	-	-	-
200.54	201.00	1% thin quartz-calcite stringers mainly parallel to foliation. 2% pyrrhotite and 1% pyrite.	E6178	200.54	201.00	.46	.02	-	-	.02
201.00		END OF HOLE								

CASING LEFT IN HOLE.

DRILLING BY BRADLEY BROS. DRILLING, NORANDA, QUEBEC.

PLACER DOME INC.  
DIAMOND DRILL RECORD

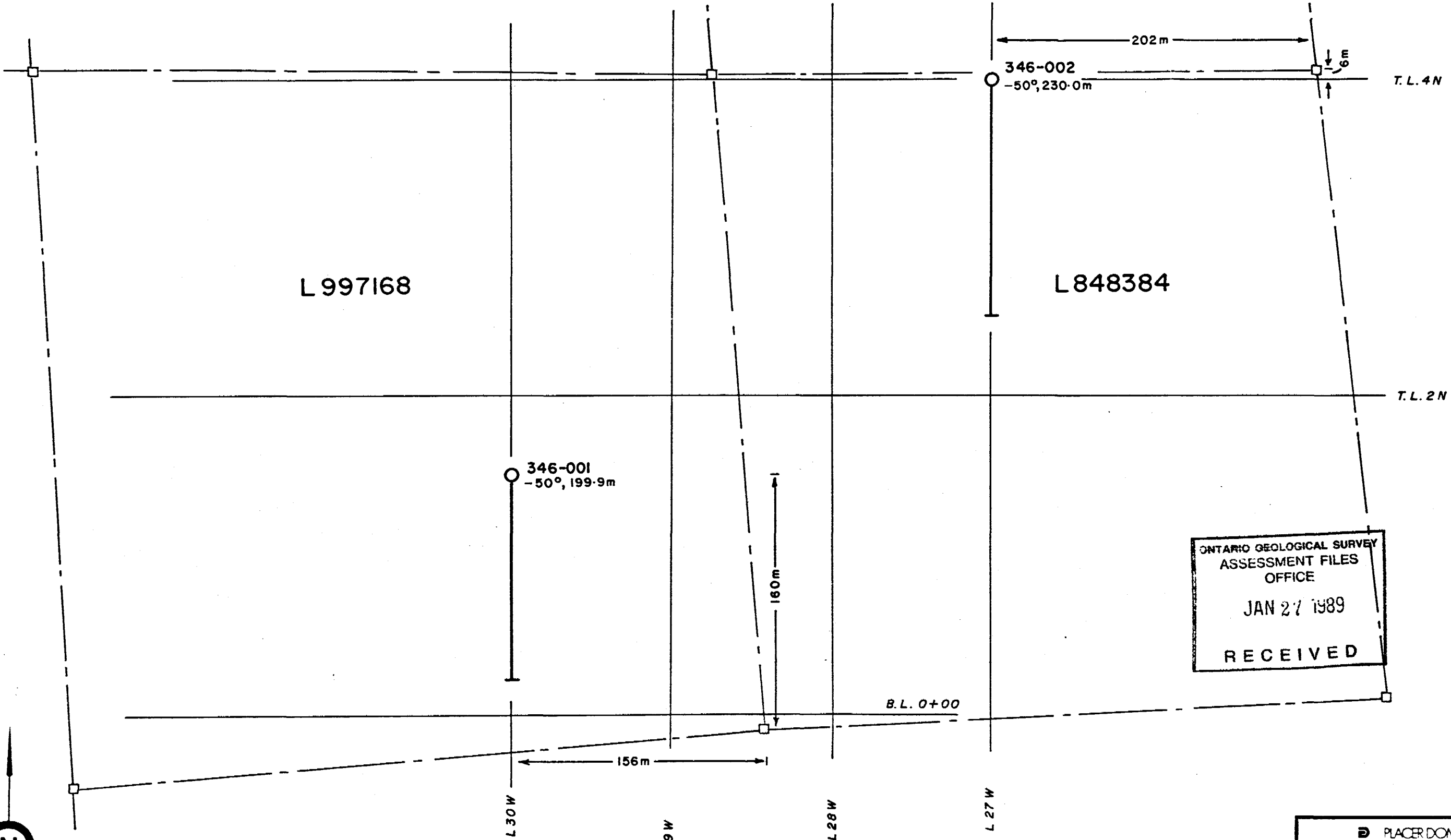
HOLE NO: 346-004  
PAGE NO: 6

FROM TO -----DESCRIPTION----- SAMPLE FROM TO LENGTH Au g/t RERUN REJECT AVERAGE

CORE STORED AT DOME MINES, SOUTH PORCUPINE, ONTARIO.

CORE CHECKED FOR RADIOACTIVITY AND FLUORESCENCE - NOTHING  
OF INTEREST.

*John M. Morgan*



ONTARIO GEOLOGICAL SURVEY  
 ASSESSMENT FILES  
 OFFICE  
 JAN 27 1989  
 RECEIVED



PLACER DOME INC.		
Proj. No. 346, DEERFOOT RES. OPT. BLAKELOCK TWP., ONT.		
<b>DDH LOCATIONS</b>		
Scale 1: 2500	Drawn FC.	Dwg. No. 346-7
Date Jan. 1989	NTS Ref. 42H/8	

L 28 W

L 27 W

L 848394

L 848393

346-004  
-50°, 201.0m

346-003  
-50°, 225.0m

160m

12m

204m

T.L. 8 N

T.L. 6 N

T.L. 4 N



PLACER DOME INC.		
Proj. No. 346, DEERFOOT RES. OPT. BLAKELOCK TWP. ONT.		
DDH LOCATIONS		
Scale 1:2500	Drawn F.C.	Dwg. No. 346-8
Date Jan. 1989	NTS Ref. 42H/8	

REF CORD: 10150.0 7000.0 SURVEYED: NO

PLACER DOME INC.

LOCATION: 1+50N 30+00W GRID: NORTH-SOUTH

DIAMOND DRILL RECORD

POST LOCATION: 160 M. NORTH AND 156 M. WEST OF NO. 2 POST.

HOLE NO: 346-001  
PROPERTY: PROJECT 346  
BLAKELOCK TWP., ONTARIO  
SECTION:

AZIMUTH: 180.0

LENGTH: 199.9

ELEVATION: .0

LOGGED BY: D. HUNT

DIP: -50.0

CORE SIZE: BQ

SYSTEM OF MEASURE: METRIC

DATE LOGGED: AUGUST 13-15, 1988

STARTED: AUGUST 12, 1988

COMPLETED: AUGUST 14, 1988

CLAIM NO: L.997168

PURPOSE: TO TEST A MAFIC TO ULTRAMAFIC INTRUSIVE

DIP TESTS (corrected)

DEPTH	AZIMUTH	DIP	DEPTH	AZIMUTH	DIP
5.00		-50.8	199.92		44.0

FROM	TO	DESCRIPTION	SAMPLE	FROM	TO	DEPTH	AZIMUTH	DIP	REJECT	AVERAGE
.00	5.00	CASING IN OVERBURDEN								
5.00	43.61	HIGH-IRON THOLEIITIC BASALT Pillowed. Medium grey green to purplish green, fine grained, soft to hard, weakly to strongly magnetic. Locally foliated at 50 to 80 degrees to core axis. Locally garnetiferous. Tuffaceous 10.08 to 10.79. Lower contact at 75 degrees.								
5.00	5.97	2% thin quartz stringers at various angles. 2% pyrite.	E2503	5.00	5.97	.97	.01	-	-	.01
13.59	14.34	Locally epidote-rich. 2% thin quartz stringers at various angles. 2% pyrite.	E2504	13.59	14.34	.75	.01	-	-	.01
14.70	15.19	4% quartz stringers, to 1 cm, at various angles. 4% pyrite.	E2505	14.70	15.19	.49	.01	-	-	.01
25.42	26.19	5% quartz stringers, to 2 cm, at various angles. 4% pyrite. Locally heavily garnetiferous.	E2506	25.42	26.19	.77	.27	-	-	.27
26.19	26.54	15% pyrrhotite and 5% pyrite.	E2507	26.19	26.54	.35	.01	-	-	.01
26.54	27.18	5% pyrrhotite and 1% pyrite.	E2508	26.54	27.18	.64	.01	-	-	.01
29.04	29.66	3% pyrite and 2% pyrrhotite.	E2509	29.04	29.66	.62	.16	-	-	.16
31.74	32.71	3% thin quartz stringers at various angles. 3% pyrrhotite, 2% pyrite, trace chalcopyrite.	E2510	31.74	32.71	.97	.00	-	-	-
32.71	33.79	Similar to 31.74 to 32.71.	E2511	32.71	33.79	1.08	.00	-	-	-
38.09	38.80	4% thin quartz stringers at various angles. 2% pyrite and 2% pyrrhotite.	E2512	38.09	38.80	.71	.00	-	-	-
39.81	40.22	4% thin quartz stringers at various angles. 2% pyrite.	E2513	39.81	40.22	.41	.00	-	-	-
41.27	41.65	3% thin quartz stringers at various angles. 8% pyrite.	E2514	41.27	41.65	.38	.08	-	-	.08
41.65	42.68	3% quartz stringers, to 1 cm, at various angles. 3% pyrite.	E2515	41.65	42.68	1.03	.00	-	-	-

ONTARIO GEOLOGICAL SURVEY  
ASSESSMENT FILES  
OFFICE  
JAN 27 1989  
RECEIVED





PLACER DOME INC.  
DIAMOND DRILL RECORD

HOLE NO: 346-001  
PAGE NO: 3

FROM	TO	-----DESCRIPTION-----	SAMPLE	FROM	TO	LENGTH	Au g/t	RERUN	REJECT	AVERAGE
	58.03	59.00 3% thin quartz stringers at various angles. 3% pyrite.	E2535	58.03	59.00	.97	.01	-	-	.01
	59.00	60.08 Similar to 58.03 to 59.00.	E2536	59.00	60.08	1.08	.11	-	-	.11
	60.08	60.26 A 1.5 cm quartz vein at 30 degrees. 3% pyrite.	E2537	60.08	60.26	.18	.01	-	-	.01
	60.26	61.10 2% pyrite.	E2538	60.26	61.10	.84	.02	-	-	.02
	61.10	62.35 3% thin quartz stringers at various angles. 5% pyrite.	E2539	61.10	62.35	1.25	.74	.72	-	.73
	62.35	63.46 2% pyrite and trace chalcopyrite.	E2540	62.35	63.46	1.11	.22	-	-	.22
63.46	70.61	GRANITE Pale to medium grey pink, medium to coarse grained, hard. Foliated at 35 degrees near lower contact. Lower contact at 50 degrees.								
	64.17	65.17 5% quartz stringers, to 3 cm, at various angles. 4% pyrite.	E2541	64.17	65.17	1.00	.00	-	-	-
	65.17	65.93 Similar to 64.17 to 65.17.	E2542	65.17	65.93	.76	.01	-	-	.01
	66.46	67.07 2% thin quartz stringers at various angles. 3% pyrite.	E2543	66.46	67.07	.61	.01	-	-	.01
	67.07	68.00 2% pyrite.	E2544	67.07	68.00	.93	.00	-	-	-
	68.00	68.98 10% quartz veins, to 1.5 cm, at various angles. 5% pyrite.	E2545	68.00	68.98	.98	.02	-	-	.02
	68.98	69.78 Similar to 68.00 to 68.98.	E2546	68.98	69.78	.80	.01	-	-	.01
	69.78	70.61 2% pyrite.	E2547	69.78	70.61	.83	.02	-	-	.02
70.61	102.12	QUARTZITE Impure, with some greywacke. Similar to 58.03 to 63.46, but darker in colour. Locally foliated at 40 to 70 degrees. Intermediate porphyry dykes, at 60 degrees, from 78.75 to 80.08 and from 90.38 to 90.48. Felsic porphyry dyke from 86.41 to 86.49. Lower contact at 55 degrees.								
	70.61	71.70 2% quartz stringers, to 1 cm, at various angles. 2% pyrite.	E2548	70.61	71.70	1.09	.01	-	-	.01
	73.14	74.00 3% thin quartz stringers at various angles. 2% pyrite.	E2549	73.14	74.00	.86	.02	-	-	.02
	76.69	77.49 5% thin quartz stringers at various angles. 3% pyrite.	E2550	76.69	77.49	.80	.02	-	-	.02
	77.49	78.06 15% quartz stringers, to 5 cm, mainly parallel to foliation. 10% pyrite.	E2551	77.49	78.06	.57	.02	-	-	.02
	78.06	78.75 5% quartz stringers, to 1 cm, at various angles. 3% pyrite.	E2552	78.06	78.75	.69	.01	-	-	.01
	78.75	79.75 4% pyrite.	E2553	78.75	79.75	1.00	.01	-	-	.01
	79.75	80.08 Similar to 78.75 to 79.75.	E2554	79.75	80.08	.33	.01	-	-	.01
	83.58	84.04 3% pyrite.	E2555	83.58	84.04	.46	.02	.00	-	.01
	85.01	85.59 2% pyrite.	E2556	85.01	85.59	.58	.01	-	-	.01
	87.77	87.96 A 2 cm quartz stringer at 60 degrees.	E2557	87.77	87.96	.19	.01	-	-	.01

PLACER DOME INC.  
DIAMOND DRILL RECORD

HOLE NO: 346-001  
PAGE NO: 4

FROM	TO	-----DESCRIPTION-----	SAMPLE	FROM	TO	LENGTH	Au g/t	RERUN	REJECT	AVERAGE
89.96	90.15	A 2.5 cm quartz vein at 70 degrees.	E2558	89.96	90.15	.19	.01	-	-	.01
91.49	91.70	3% thin quartz stringers at various angles. Trace pyrite.	E2559	91.49	91.70	.21	.00	-	-	-
92.31	92.56	Locally brecciated. 5% quartz-carbonate as matrix.	E2560	92.31	92.56	.25	.01	-	-	.01
96.41	97.65	5% quartz stringers, to 2.5 cm, at various angles.	E2561	96.41	97.65	1.24	.01	-	-	.01
100.31	101.45	3% quartz stringers, to 1 cm, at various angles. 2% pyrite.	E2562	100.31	101.45	1.14	.01	-	-	.01
101.45	102.12	2% pyrite.	E2563	101.45	102.12	.67	.02	-	-	.02
102.12	108.28	INTERMEDIATE TO FELSIC INTRUSIVE Medium to dark grey, medium to coarse grained, moderately hard to hard. Lower contact at 50 degrees.								
102.12	103.30	4% pyrite.	E2564	102.12	103.30	1.18	.01	-	-	.01
103.30	103.47	A 6 cm quartz vein at 45 degrees. 4% pyrite.	E2565	103.30	103.47	.17	.01	-	-	.01
103.47	104.47	3% pyrite.	E2566	103.47	104.47	1.00	.01	-	-	.01
104.47	105.47	Similar to 103.47 to 104.47.	E2567	104.47	105.47	1.00	.01	-	-	.01
105.47	106.47	Similar to 103.47 to 104.47.	E2568	105.47	106.47	1.00	.01	-	-	.01
106.47	106.82	Similar to 103.47 to 104.47.	E2569	106.47	106.82	.35	.03	-	-	.03
106.82	107.00	A 1.5 cm quartz stringer at 35 degrees. 4% pyrite.	E2570	106.82	107.00	.18	.04	-	-	.04
107.00	108.28	3% pyrite.	E2571	107.00	108.28	1.28	.01	-	-	.01
108.28	111.17	HIGH-IRON THOLEIITIC BASALT Medium green grey, very fine to fine grained, massive.								
108.28	109.24	3% pyrite.	E2572	108.28	109.24	.96	.01	-	-	.01
109.24	109.40	A thin quartz stringer at 55 degrees. 1% pyrite.	E2573	109.24	109.40	.16	.01	-	-	.01
110.47	111.17	4% pyrite.	E2574	110.47	111.17	.70	.04	.04	-	.04
111.17	123.72	FELSIC INTRUSIVE Pale to medium grey, green grey, or pink grey, fine to coarse grained, moderately soft to hard. Locally bleached. Lower contact at 45 degrees.								
111.17	112.17	3% pyrite.	E2575	111.17	112.17	1.00	.02	-	-	.02
112.17	112.69	Similar to 111.17 to 112.17.	E2576	112.17	112.69	.52	.02	-	-	.02
112.69	113.06	Bleached. 3% quartz stringers and 3% epidote stringers at various angles. Trace pyrite.	E2577	112.69	113.06	.37	.01	-	-	.01
113.06	113.85	5% quartz stringers, to 2 cm, at various angles. 3% pyrite.	E2578	113.06	113.85	.79	.02	-	-	.02
113.85	114.30	Bleached. 25% quartz stringers, to 3 cm, at various angles. 3% pyrite.	E2579	113.85	114.30	.45	.04	-	-	.04
114.30	115.31	Locally bleached. 3% pyrite.	E2580	114.30	115.31	1.01	.01	-	-	.01
115.31	115.79	Similar to 114.30 to 115.31.	E2581	115.31	115.79	.48	.01	-	-	.01

PLACER DOME INC.  
DIAMOND DRILL RECORD

HOLE NO: 346-001  
PAGE NO: 5

FROM	TO	DESCRIPTION	SAMPLE	FROM	TO	LENGTH	Au g/t	RERUN	REJECT	AVERAGE	
	115.79	116.76	Locally bleached. 8% quartz veins, to 3 cm, at various angles. 5% pyrite.	E2582	115.79	116.76	.97	.00	-	-	
	116.76	117.52	Similar to 115.79 to 116.76.	E2583	116.76	117.52	.76	.00	-	-	
	117.52	118.53	Locally bleached. 4% pyrite.	E2584	117.52	118.53	1.01	.00	-	-	
	118.53	119.58	Similar to 117.52 to 118.53.	E2585	118.53	119.58	1.05	.00	-	-	
	119.58	120.55	10% quartz veins, to 3.5 cm, at various angles. 1% pyrite.	E2586	119.58	120.55	.97	.00	-	-	
	121.47	122.26	Locally bleached. 5% pyrite.	E2587	121.47	122.26	.79	.01	-	.01	
	122.26	123.09	Bleached. 25% quartz veins, to 4 cm, at various angles. 10% pyrite.	E2588	122.26	123.09	.83	.06	.04	.05	
	123.09	123.45	3% pyrite.	E2589	123.09	123.45	.36	.00	-	-	
	123.45	123.72	A 10 cm quartz vein at 30 degrees. 5% pyrite.	E2590	123.45	123.72	.27	.00	-	-	
123.72	163.76	HIGH-IRON THOLEIITIC BASALT Medium to dark green grey, very fine to fine grained, soft to hard, locally weakly magnetic. Locally garnetiferous. Locally foliated at 30 to 60 degrees. Weakly conductive, 155.52 to 156.82. Lower contact at 60 degrees.									
	123.72	124.90	4% pyrite.	E2591	123.72	124.90	1.18	.00	-	-	
	125.35	125.67	5% thin quartz stringers at various angles. 2% pyrite.	E2592	125.35	125.67	.32	.00	-	-	
	129.07	130.08	5% quartz stringers, to 4.5 cm, at various angles. 1% pyrite.	E2593	129.07	130.08	1.01	.02	-	.02	
	130.08	130.59	Similar to 129.07 to 130.08.	E2594	130.08	130.59	.51	.02	-	.02	
	130.59	131.77	3% thin quartz stringers at various angles. 1% pyrite.	E2595	130.59	131.77	1.18	.00	-	-	
	135.27	135.55	A thin quartz stringers at 20 degrees. 3% pyrrhotite and 2% pyrite.	E2596	135.27	135.55	.28	.03	-	.03	
	135.55	136.71	3% pyrite and 2% pyrrhotite.	E2597	135.55	136.71	1.16	.01	-	.01	
	137.34	137.79	4% pyrite and 3% pyrrhotite.	E2598	137.34	137.79	.45	.00	-	-	
	137.79	138.04	2% pyrrhotite and 1% pyrite.	E2599	137.79	138.04	.25	.01	-	.01	
	140.42	141.45	3% thin quartz stringers at various angles. 5% pyrite and 2% pyrrhotite.	E2600	140.42	141.45	1.03	.45	.40	.43	
	141.86	142.45	3% thin quartz stringers at various angles. 2% pyrrhotite and 1% pyrite.	E2601	141.86	142.45	.59	.15	-	.15	
	145.37	146.37	3% quartz stringers, to 1 cm, at various angles. 2% pyrite and 2% pyrrhotite.	E2602	145.37	146.37	1.00	.01	-	.01	
	146.37	147.35	Similar to 145.37 to 146.37.	E2603	146.37	147.35	.98	.01	-	.01	
	147.35	148.26	Similar to 145.37 to 146.37.	E2604	147.35	148.26	.91	.02	-	.02	
	150.75	150.96	5% thin quartz stringers mainly at 40 degrees. 4% pyrite.	E2605	150.75	150.96	.21	.00	-	-	
	152.31	152.75	3% thin quartz stringers at various angles. 3% pyrite and 2% pyrrhotite.	E2606	152.31	152.75	.44	.00	-	-	
	154.01	154.29	2% thin quartz stringers at various angles. 3% pyrite and 1% pyrrhotite.	E2607	154.01	154.29	.28	.00	-	-	
	155.52	156.82	WEAKLY CONDUCTIVE. 2% thin quartz stringers at various angles. 10% pyrite and 5% pyrrhotite.	E2608	155.52	156.82	1.30	.29	-	.29	

PLACER DOME INC.  
DIAMOND DRILL RECORD

HOLE NO: 346-001  
PAGE NO: 6

FROM	TO	DESCRIPTION	SAMPLE	FROM	TO	LENGTH	Au g/t	RERUN	REJECT	AVERAGE
160.24	160.83	1% thin quartz-calcite stringers at various angles. 3% pyrite and 1% pyrrhotite.	E2609	160.24	160.83	.59	.01	-	-	.01
161.94	162.26	5% pyrite and 2% pyrrhotite, in bands.	E2610	161.94	162.26	.32	.85	.72	-	.79
163.07	163.28	2% pyrite and 1% pyrrhotite, in bands.	E2611	163.07	163.28	.21	.03	-	-	.03
163.76	168.15	FELSIC INTRUSIVE Pale to medium pink grey, medium to coarse grained, hard.								
163.76	164.76	5% thin quartz stringers and 2% epidote stringers, at various angles. 3% pyrite.	E2612	163.76	164.76	1.00	.00	-	-	-
164.76	165.54	Similar to 163.76 to 164.76.	E2613	164.76	165.54	.78	.07	-	-	.07
165.54	165.73	A 6 cm quartz vein at 80 degrees. 1% pyrite.	E2614	165.54	165.73	.19	.01	-	-	.01
165.73	166.56	Locally bleached. 5% quartz stringers, to 1.5 cm, and 3% thin epidote stringers, at various angles. 3% pyrite.	E2615	165.73	166.56	.83	.04	-	-	.04
167.46	168.15	3% pyrite.	E2616	167.46	168.15	.69	.08	-	-	.08
168.15	199.92	HIGH-IRON THOLEIITIC BASALT Similar to 123.72 to 163.76. Weakly to moderately magnetic. Locally porphyritic. Locally foliated at 40 to 70 degrees.								
168.15	168.77	3% pyrite and 2% pyrrhotite.	E2617	168.15	168.77	.62	.25	-	-	.25
170.25	171.14	3% thin quartz stringers mainly at 30 degrees. 5% pyrite and 2% pyrrhotite.	E2618	170.25	171.14	.89	.28	-	-	.28
171.60	172.61	5% thin quartz stringers at various angles. 5% pyrite and 2% pyrrhotite.	E2619	171.60	172.61	1.01	1.03	.87	.85	.90
172.61	173.81	Similar to 171.60 to 172.61.	E2620	172.61	173.81	1.20	.03	-	-	.03
174.25	175.24	2% pyrite and 2% pyrrhotite.	E2621	174.25	175.24	.99	.15	-	-	.15
175.24	175.63	Similar to 174.25 to 175.24.	E2622	175.24	175.63	.39	.06	-	-	.06
176.29	176.89	2% pyrite and 2% pyrrhotite.	E2623	176.29	176.89	.60	.16	-	-	.16
176.89	177.89	3% thin quartz stringers at various angles. 5% pyrite and 5% pyrrhotite.	E2624	176.89	177.89	1.00	.29	-	-	.29
177.89	178.76	Similar to 176.89 to 177.89.	E2625	177.89	178.76	.87	1.16	.99	1.00	1.04
181.02	182.27	2% thin quartz stringers at various angles. 3% pyrite.	E2626	181.02	182.27	1.25	.04	-	-	.04
183.22	183.64	3% thin quartz stringers at various angles. 3% pyrite.	E2627	183.22	183.64	.42	.03	-	-	.03
187.57	188.68	5% quartz stringers, to 1 cm, at various angles. 3% pyrite.	E2628	187.57	188.68	1.11	.11	-	-	.11
188.68	189.10	20% quartz stringers, to 10 cm, at various angles. 4% pyrite.	E2629	188.68	189.10	.42	.88	.77	-	.82
189.73	190.10	5% quartz-chlorite stringers, to 1 cm, at various angles. 4% pyrite and 1% pyrrhotite.	E2630	189.73	190.10	.37	.00	-	-	-
190.44	190.89	Locally brecciated. 8% quartz-carbonate as matrix and as thin stringers at various angles. 4% pyrite.	E2631	190.44	190.89	.45	.00	-	-	-
194.69	194.95	5% thin quartz-epidote stringers at various angles. 3% pyrite.	E2632	194.69	194.95	.26	.00	-	-	-
195.08	195.55	4% pyrite.	E2633	195.08	195.55	.47	.00	-	-	-

PLACER DOME INC.  
DIAMOND DRILL RECORD

HOLE NO: 346-001  
PAGE NO: 7

-----DESCRIPTION-----	SAMPLE	FROM	TO	LENGTH	Au g/t	RERUN	REJECT	AVERAGE
197.54 198.55 3% pyrite.	E2634	197.54	198.55	1.01	.05	-	-	.05
198.55 199.16 Similar to 197.54 to 198.55.	E2635	198.55	199.16	.61	.04	-	-	.04
199.16 199.46 A 4 cm quartz vein at 30 degrees. 5% pyrite.	E2636	199.16	199.46	.30	.00	-	-	-
199.46 199.92 3% thin quartz-calcite stringers at various angles. 2% pyrite.	E2637	199.46	199.92	.46	.00	-	-	-

199.92 END OF HOLE

CASING PULLED.

DRILLING BY BRADLEY BROS. DRILLING, NORANDA, QUEBEC.

CORE STORED AT DOME MINES, SOUTH PORCUPINE, ONTARIO.

CORE CHECKED FOR RADIOACTIVITY AND FLUORESCENCE. SOME  
CALCITE FLUORESCES RED.

*John M. Morgan*



Name and Address of Recorded Holder: **Placer Dome Inc.**  
 Address: **216**  
 T 837  
 P.O. Box 350, Suite 3500, IBM Tower, TD Centre, Toronto, Ontario M5K 1N3

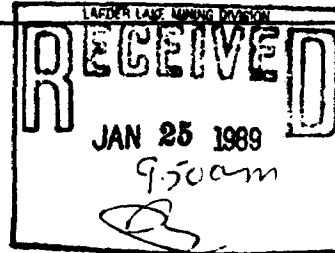
Summary of Work Performance and Distribution of Credits

Total Work Days Cr. claimed 2,808	Mining Claim			Mining Claim			Mining Claim		
	Prefix	Number	Work Days Cr.	Prefix	Number	Work Days Cr.	Prefix	Number	Work Days Cr.
for Performance of the following work. (Check one only) <input type="checkbox"/> Manual Work <input type="checkbox"/> Shaft Sinking Drifting or other Lateral Work. <input type="checkbox"/> Compressed Air, other Power driven or mechanical equip. <input type="checkbox"/> Power Stripping <input checked="" type="checkbox"/> Diamond or other Core drilling <input type="checkbox"/> Land Survey	L	755547	98	L	848388	97	L	848396	97
		755548	98		848389	97		848397	97
		755549	97		848390	97		848398	97
		755552	97		848391	97		997166	160
		848384	97		848392	97		997167	160
		848385	97		848393	97		997168	160
		848386	97		848394	97		997175	160
		848387	97		848395	97		997176	160
								997177	163

All the work was performed on Mining Claim(s): L997168, 848384, 848393, 848394

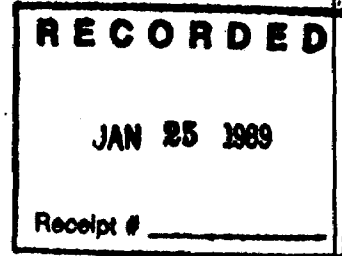
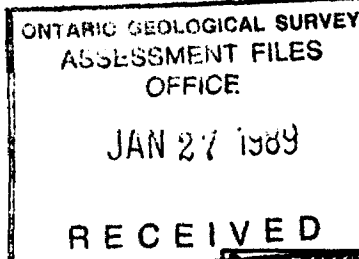
Required Information eg: type of equipment, Names, Addresses, etc. (See Table Below)

DDH 346-001 199.9m (655.8)  
 346-002 230.0m (754.6)  
 346-003 225.0m (738.2)  
 346-004 201.0m (659.4)



Drilling by: Bradley Bros. Drilling, Noranda, Quebec

Core Size: BQ



Date of Report: January 18/89  
 Recorded Holder or Agent (Signature): *M. Guf*

Certification Verifying Report of Work

I hereby certify that I have a personal and intimate knowledge of the facts set forth in the Report of Work annexed hereto, having performed the work or witnessed same during and/or after its completion and the annexed report is true.

Name and Postal Address of Person Certifying: **John Morganti, Manager, Exploration**

Placer Dome Inc., P.O. Box 350, Suite 3500  
 IBM Tower, TD Centre, Toronto, Ontario M5K 1N3  
 Date Certified: January 18/89

Certified by Signature: *John M. Morganti*

Table of Information/Attachments Required by the Mining Recorder

Type of Work	Specific information per type	Other information (Common to 2 or more types)	Attachments
Manual Work	Nil	Names and addresses of men who performed manual work/operated equipment, together with dates and hours of employment.	Work Sketch: these are required to show the location and extent of work in relation to the nearest claim post.
Shaft Sinking, Drifting or other Lateral Work			
Compressed air, other power driven or mechanical equip.	Type of equipment	Names and addresses of owner or operator together with dates when drilling/stripping done.	Work Sketch (as above) in duplicate
Power Stripping	Type of equipment and amount expended. Note: Proof of actual cost must be submitted within 30 days of recording.		
Diamond or other core	Signed core log showing: footage, diameter of hole, number and grade of holes.	Nil	Nil

