



42H12SE0010 18 HURDMAN

010

DIAMOND DRILLING

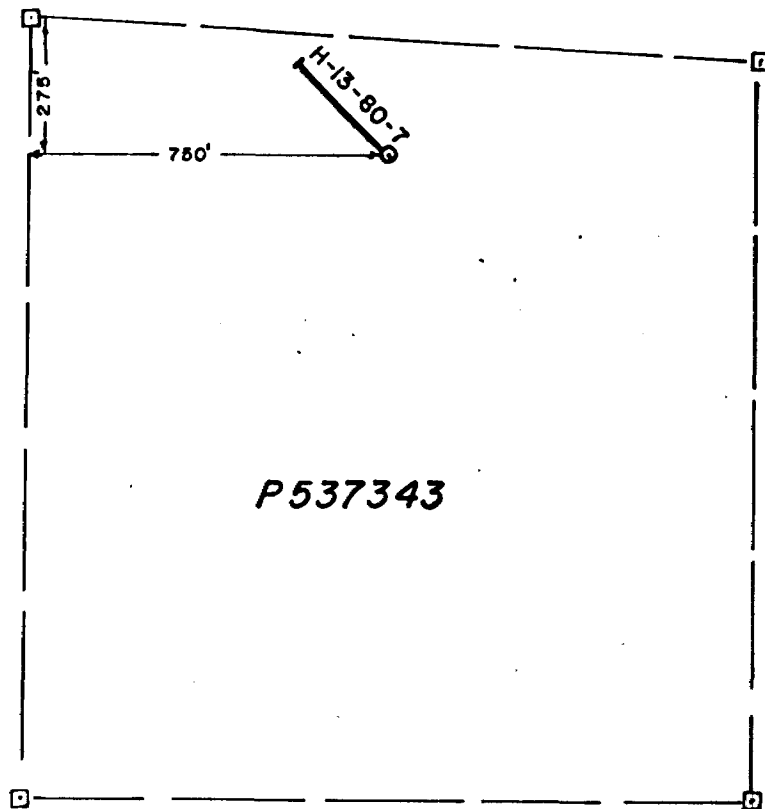
TOWNSHIP: Hurdman

REPORT No.: 18

WORK PERFORMED BY: Mattagami Lake Mines Ltd.

<u>CLAIM No.</u>	<u>HOLE No.</u>	<u>FOOTAGE</u>	<u>DATE</u>	<u>NOTE</u>
P 537343	H-13-80.7	517.0	Mar/80	(1)
P 546708	H-8-80.4	448.0	Feb/80	(2)
P 546101	H-16-80.12	428.0	Apr/80	(3)

NOTES: (1) #358-80
(2) #375-80
(3) #376-80

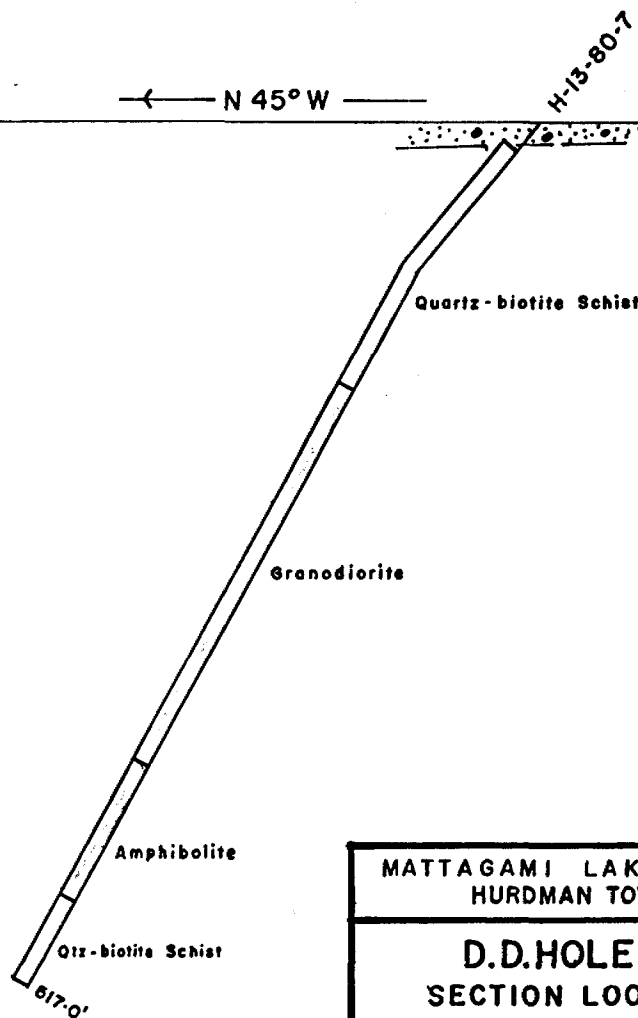


P537343

PLAN

Scale: 1" = 400'

← N 45° W →

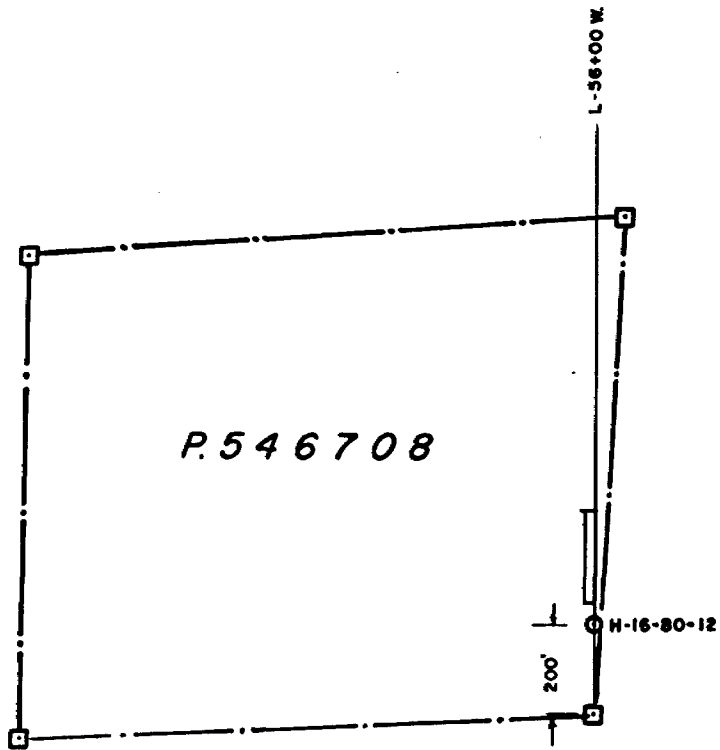


MATTAGAMI LAKE EXPLORATION LTD.
HURDMAN TOWNSHIP, ONTARIO

D.D.HOLE H-13-80-7
SECTION LOOKING NORTHEAST

Scale: 1" = 100'

Dec. 10, 1980



P.546708

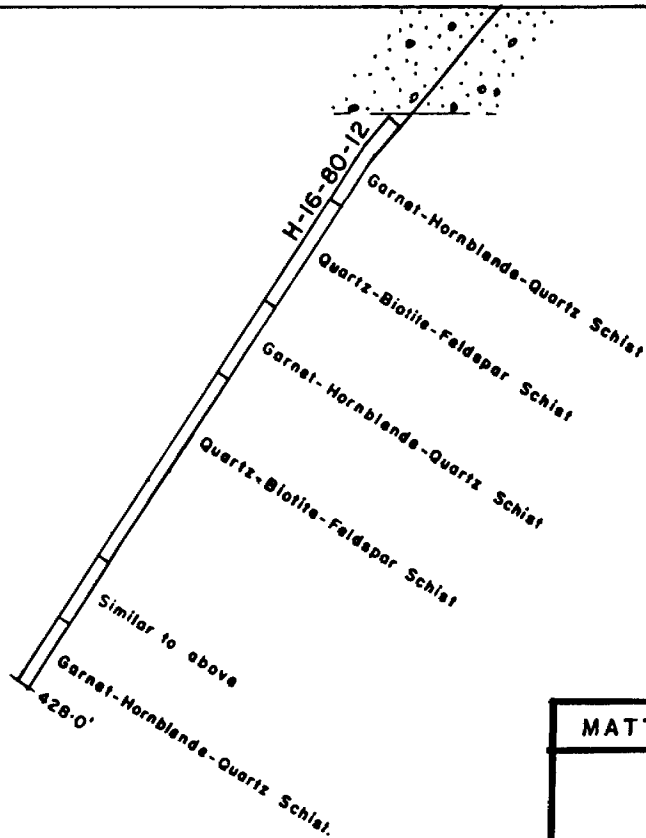
PLAN

Scale: 1" = 400'

Surface

N.

S.



MATTAGAMI LAKE EXPLORATION LTD.

D.D.HOLE H-16-80-12
SECTION 56+00 W.

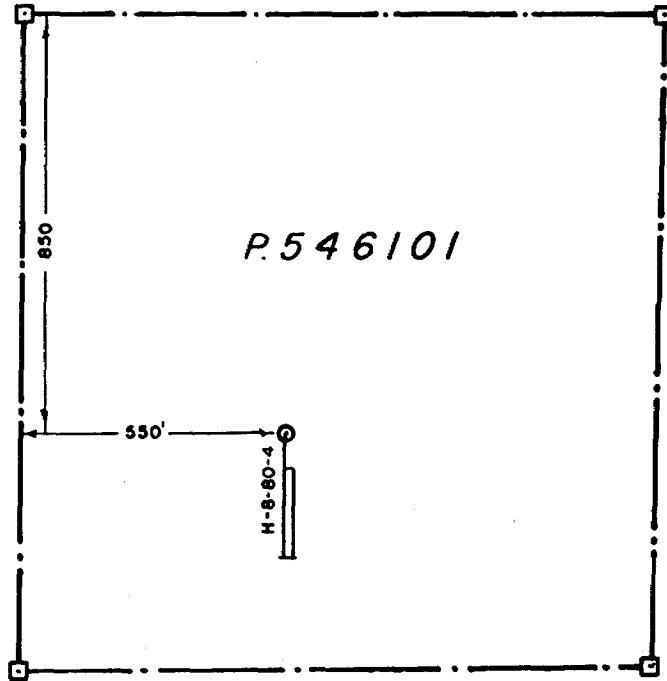
Scale: 1" = 100'

June 24, 1980

MATTAGAMI LAKE MINES LIMITED - EXPLORATION DIVISION - DIAMOND DRILL HOLE RECORD

PROPERTY	HURDMAN	LATITUDE	16+00S	STARTED	APRIL 2, 1980.	DIP TEST					
HOLE NO.	H-16-80.12	DEPARTURE	56+00W	FINISHED	APRIL 8, 1980.	Footage	Corrected	Footage	Corrected	Footage	Corre
BEARING	GRID NORTH	ELEVATION	SURFACE	LENGTH	428.0'	200.0'	57°				
DIP-COLLAR	-50°	SECTION		LOGGED BY	Paul Nielsen						

FOOTAGE		DESCRIPTION	% Mineralization	SAMPLE NO.	FOOTAGE			ASSAYS				
From	To				From	To	Length	Au oz/T	Ag oz/T	Cu %	Zn %	Pb %
0	80.0	CASING: Bedrock at 75.0'										
80.0	131.0	GARNET-HORNBLENDE-QUARTZ SCHIST: 25-40% aggregates of garnets, up to 1cm in diameter, 5-20% hornblende grains 3-8mm in diameter, generally concentrated in bands, 20-30% interstitial microcrystalline quartz. Up to 10% chlorite in clusters concentrated near hornblende rich zones.										
		113.0 - 126.9 5-20% pyrite and pyrrhotite as blebs and stringers, 5% magnetite.										
		126.9 - 131.0 Quartz vein, 10-15% waxy pyrite mineralization, 5% pyrrhotite as circular blebs.										
131.0	194.0	QUARTZ-BIOTITE-FELDSPAR SCHIST: Light grey slightly foliated to schistose rock. Fine grained approximately 0.5 to 1.0mm in diameter equigranular quartz and feldspar; 10%-20% biotite as matrix material; crude banding with feldspar rich horizons displaying a granitic texture and quartz biotite rich horizons with minor hornblende and sericite, ubiquitous pyrite veins with minor limonite and goethite alteration.										
194.0	238.0	GARNET-HORNBLENDE-QUARTZ SCHIST: Similar to unit described above.	2-10% po.	S 4926	224.1	229.0	4.9	.003	.05	.01	.008	.004
				4927	229.0	233.9	4.9	.005	.07	.02	.011	.005
		223.5 - 238.0 5-30% pyrrhotite, minor pyrite.	10-50% po.	4928	233.9	237.0	3.1	.004	.06	.01	.006	.004
			5-50% po.	4929	237.0	242.0	5.0	.004	.05	.01	.006	.004
238.0	350.0	QUARTZ-BIOTITE-FELDSPAR SCHIST (Graphitic Schist Horizons) Unit similar to that previously described, with graphitic schist zones varying from 1.0' to 12.0' width and up to 20% disseminated pyrite.	10% py. po.	S 4930	242.0	247.0	5.0	.004	.04	.02	.005	.004
			2-10% py.	4931	247.0	248.8	1.8	.015	.05	.02	.012	.007
		i.e. 247.0' - 248.8'	2-5% py	S 4932	263.3	267.7	4.4	.004	.04	.02	.010	.004
		263.3' - 280.1'	5-10% py.	S 4933	273.6	277.9	4.3	.004	.05	.02	.020	.005
		284.3' - 285.4'	10% py.	4934	277.9	280.1	2.2	.003	.03	.02	.012	.002
		292.5' - 293.5'	5% py.	S 4935	284.3	285.4	1.1	.004	.04	.03	.013	.004
		Zone of silicification prominent above graphitic schist horizon, containing 5-50% pyrrhotite, 2-10% pyrite from 238.0' + 246.6'.	5-10% py.	S 4936	290.2	292.8	0.6	.004	.05	.02	.013	.005
			20% py.	S 4937	292.5	293.5	1.0	.004	.05	.02	.012	.007



P.546101

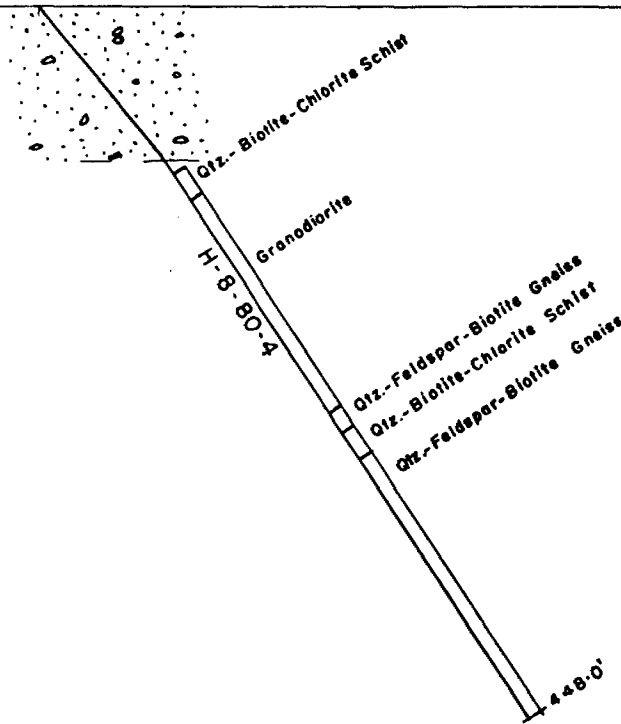
PLAN

Scale: 1" = 400'

Surface

N.

S.



MATTAGAMI LAKE EXPLORATION LTD.

D.D.HOLE H-8-80-4

SECTION 20+00W.

Scale: 1" = 100'

June 25, 1980