



42H13SE0001 63.1751 AVON

010

63.1751

September 27, 1965

Geophysical Survey - Avon Claims

Location: In Avon Township, one and one-half miles south of the north boundary and one and three-quarter miles west of the east boundary.

The new highway being constructed south from Fraserdale crosses the claims.

Owner: Theodore LaRose, Cochrane, holder of License K-16023.

Work submitted by: Area Mines Limited,
Suite 2310, - 44 King St. West,
Toronto 1, Ontario.

Claims: Six claims, P 79364 to P 79369 inclusive.

Pertinent Geological Data: The claims lie in an area of gneiss and amphibolite.

Exploration and Development: Magnetic and electromagnetic surveys were run over 5.3 miles of line spaced at 400 foot intervals, for evaluation of a conductor located in prior aerial surveys. Detailed electromagnetic profiles were made in the vicinity of the one conductor located.

Electromagnetic Results

One definite conductor was traced for 900 feet. Its continuation east runs into the Abitibi River, so its total length could not be determined. No anomalous response was obtained over the rest of the property.

Magnetic Results

A 1200 to 4000 gamma magnetic feature traverses the property in a slightly north of east direction. Several shorter, weaker features also occur. The electromagnetic zone occupies a slight low flanking the main magnetic feature.

Conclusions

A weak gossan outcrops on strike with the conductor and east of the Abitibi River. For this reason, the conductivity is probably due to a concentration of sulphides.

The width and intensity of the magnetic feature suggests a zone of concentration of magnetite in gneiss, or amphibolite.

Instrumentation:

A Sharpe SE-250 vertical coil Electromagnetic Unit and a Sharpe MF-1 Magnetometer with a scale constant of 20 gammas were used in the survey.


Fenton Scott

KINERAS TWP.

AVON TWP.

BOURASSA TOWNSHIP

P. 79364	P. 79365	P. 79366
P. 79367	P. 79368	P. 79369

KEY MAP.

SHOWING
CLAIMS.

P- 79364 to P-79369
AVON TWP.

1" = 1/2 MILE SEPT. 1965.

ABITIBI RIVER

HYDRO

M. 64

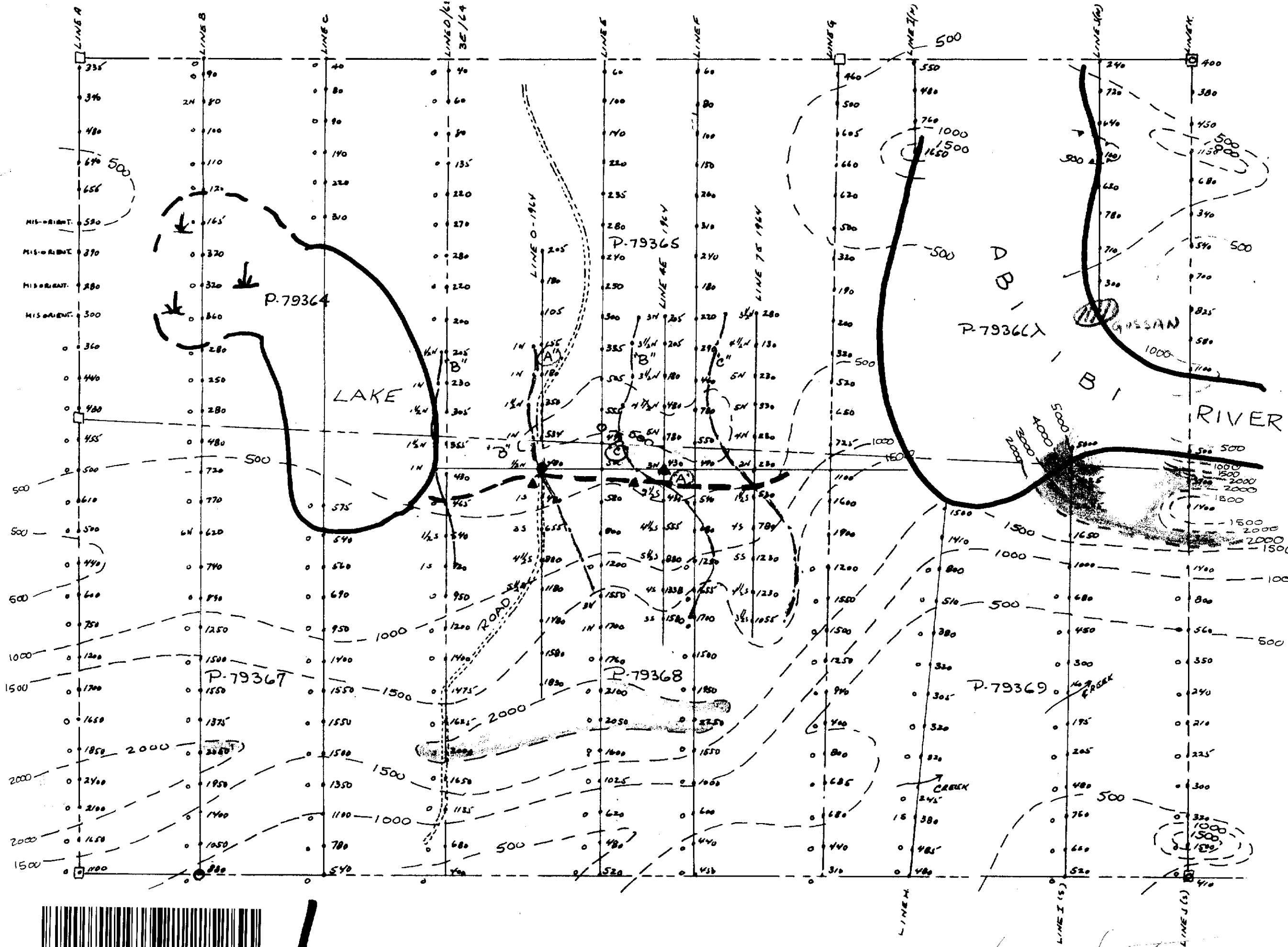
O.N.R.

7

8

9

GEOPHYSICAL SURVEY.
 CLAIMS P-79364-P-79369.
AVON TWP.
 SURVEYED DEC. 1964, MAY 1965.
 SCALE 1" = 300' SEPT. 1965.
 PROPERTY RECORDED BY
 T. LAROSE K-11023



- CLAIM LINE
- ROAD.
- 1000----- MAGNETIC CONTOUR
IN GAMMAS.
- E.M. PROFILE
1" = 20'
- ▲ "A" E.M. TRANSMITTER
LOCATION.
- CONDUCTOR AXIS.
- MAGNETOMETER
BASE STATION
- MAGNETOMETER TIE
- CLAIM POST. STATIONS.
- ▨ SWAMP.
- 500 SURVEY TRAVERSING
MAGNETOMETER READING
IN GAMMAS.
(RIGHT)
- 890 E.M. READING AND DIRECTION
(LEFT).



1
200

Scott