



42104NE0007 63.2234 VALENTINE

010

63.2234

~~63.2234~~  
63.2234

REPORT ON HELICOPTER-BORNE MAGNETOMETER SURVEY CONDUCTED OVER PARTS  
OF VALENTINE, PITT, HAMLET AND KILMER TOWNSHIPS, APRIL 8th & 9th, 1967.

During the period April 8th-9th, 1967, Barringer Research Limited, in conjunction with Niagara Helicopters Ltd., carried out a low level airborne magnetometer survey of an area surrounding Coral Rapids in Northeastern Ontario. The survey covered about 13½ square miles, including parts of Valentine, Pitt, Hamlet and Kilmer Townships.

A total of 181.5 line miles were traversed in this area, lines being flown N-S at a spacing of about 400'. The mean altitude of the aircraft was 200' above terrain level, and the sensitive equipment was suspended 100' below the aircraft.

The helicopter was equipped with a Barringer AM-101A magnetometer which measured the total magnetic field intensity to an estimated accuracy of 5 gammas.

A Mark 7, 35mm. aerial frame camera was used for locating flight lines. Topographic ground control points are estimated to be located within 100' accuracy.

The survey area incorporates a smaller area within Valentine Township east of the Abitibi River occupied by mining claims Numbers P91,422 to P91,436 inclusive, over which a total of 12½ line miles were flown.

Barringer Research Ltd. were responsible for producing a map showing the total intensity contours over the area flown.

GENERAL

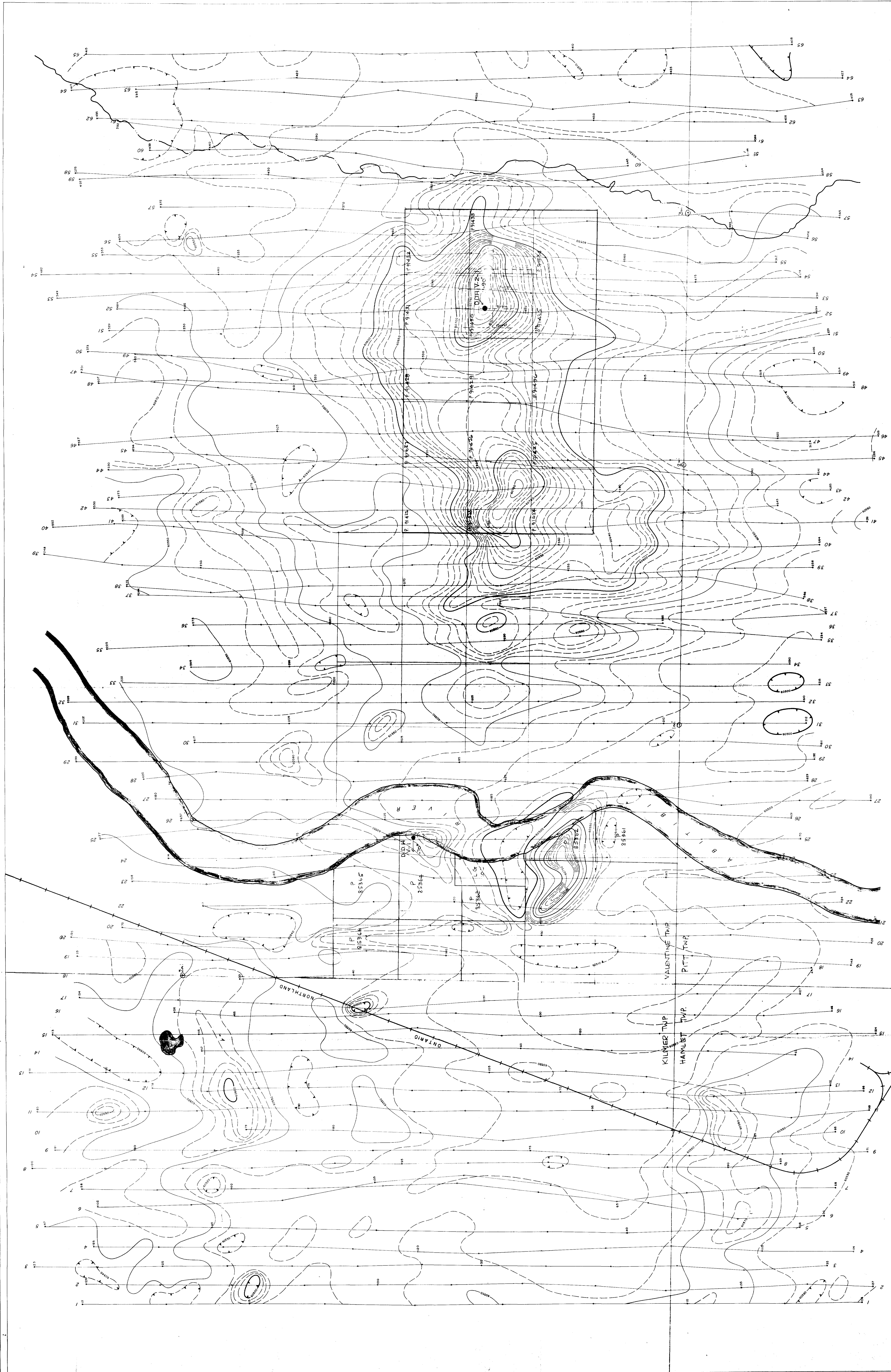
The purpose of the survey was to detail in particular a large magnetic high previously indicated on the O.D.M.-GSC aeromagnetic maps, and in general to locate possible ultrabasic or alkaline intrusive complexes. Kimberlitic intrusives are indicated to occur at Coral Rapids, in an area underlain by a thick cover of Palaeozoic sediments.

The detail survey east of the Abitibi River shows a large anomalous area, with general characteristics similar to those of carbonatite intrusive complexes.

Respectfully submitted,  
*H.R. Strain for P. Eng*  
for A. JAMES WALKER,  
ARGOR EXPLORATIONS LTD.

Moosonee, Ontario,  
Nov. 17th, 1967.

ARGOR EXPLORATIONS LTD.  
 Aeromagnetic Survey  
**TOTAL INTENSITY CONTOURS**  
**VALENTINE AREA**



**LEGEND**

- 10 ft Contour interval
- 500 ft Contour interval
- 100 ft Contour interval
- 50 ft Contour interval
- 10 ft Contour interval
- Depression
- Flight line
- Contours unshaded (LOCATION GRID NOT APPLIED FOR ASSESSMENT CREDIT)
- DDH V-2-1 COMPLETED DIAMOND DRILL HOLE

2000

Magnetic declination 10° 55' West

Scale 1" = 660 Feet (Approx.)