



42104NE0009 63.2194 VALENTINE

010

63.2194

REPORT ON HELICOPTER - BORNE MAGNETOMETER SURVEY CONDUCTED OVER PARTS OF VALENTINE, MITT, HAMLET AND KILMER TOWNSHIPS, APRIL 8th - 9th, 1967.

During the period April 8th and 9th, 1967, Barringer Research Limited, in conjunction with Niagara Helicopters Ltd., carried out an airborne magnetometer survey of an area surrounding Coral Rapids in Northeastern Ontario. The survey covered about 13 1/2 square miles, including parts of Valentine, Mitt, Hamlet and Kilmer Townships. A total of 181.5 line miles were completed in this area, lines being flown N-S at a spacing of approximately 400' at an altitude of 200' above terrain level.

This area incorporates a smaller area in the Southwest corner of Valentine Township occupied by mining claims - numbers P85361, P85362, P85363, P85364, P85365 and P85366 over which a total of 4 line miles were flown.

The helicopter was equipped with a Barringer AP-101A magnetometer which measured the total magnetic field intensity. Contours are estimated to be accurate to within 5 gammas.

A Park 7, 35mm camera was used for locating flight lines.

Barringer Research Ltd. were responsible for producing a map showing the total intensity contours over the area flown.

GENERAL

The area is underlain by sediments of Lower and Middle Devonian age. These are thought to be intruded by dykes of lamprophyre and "kimberlite" as reported in the recent publication "The Source of Kimberlite Indicator Minerals in the James Bay lowland" by D.D. Brown, G. Bennett and F.T. George - (C.P.N. miscellaneous paper #17, March 1967).

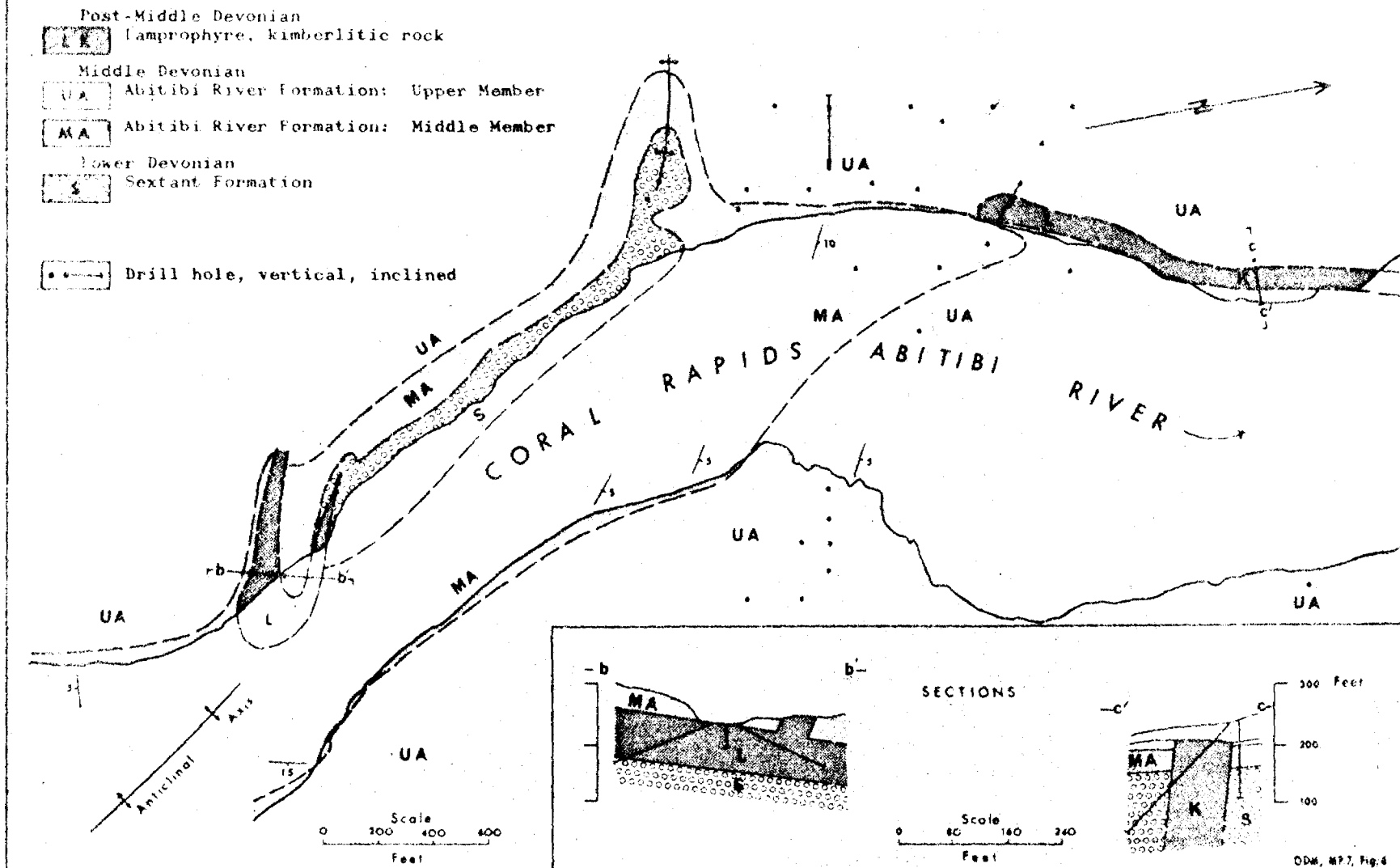
The purpose of the helicopter - borne magnetometer survey was to detail the area in order to detect such intrusive plugs and their extensions with a view to locating a potential source of diamonds.

Respectfully submitted,

A. JAMES WALKER

CONSOLIDATED MORRISON EXPLORATIONS LTD.

Figure 4 Map of lamprophyre and kimberlitic intrusions, Coral Rapids, Abitibi River, Valentine Township (modified from plans by Ontario Hydro)



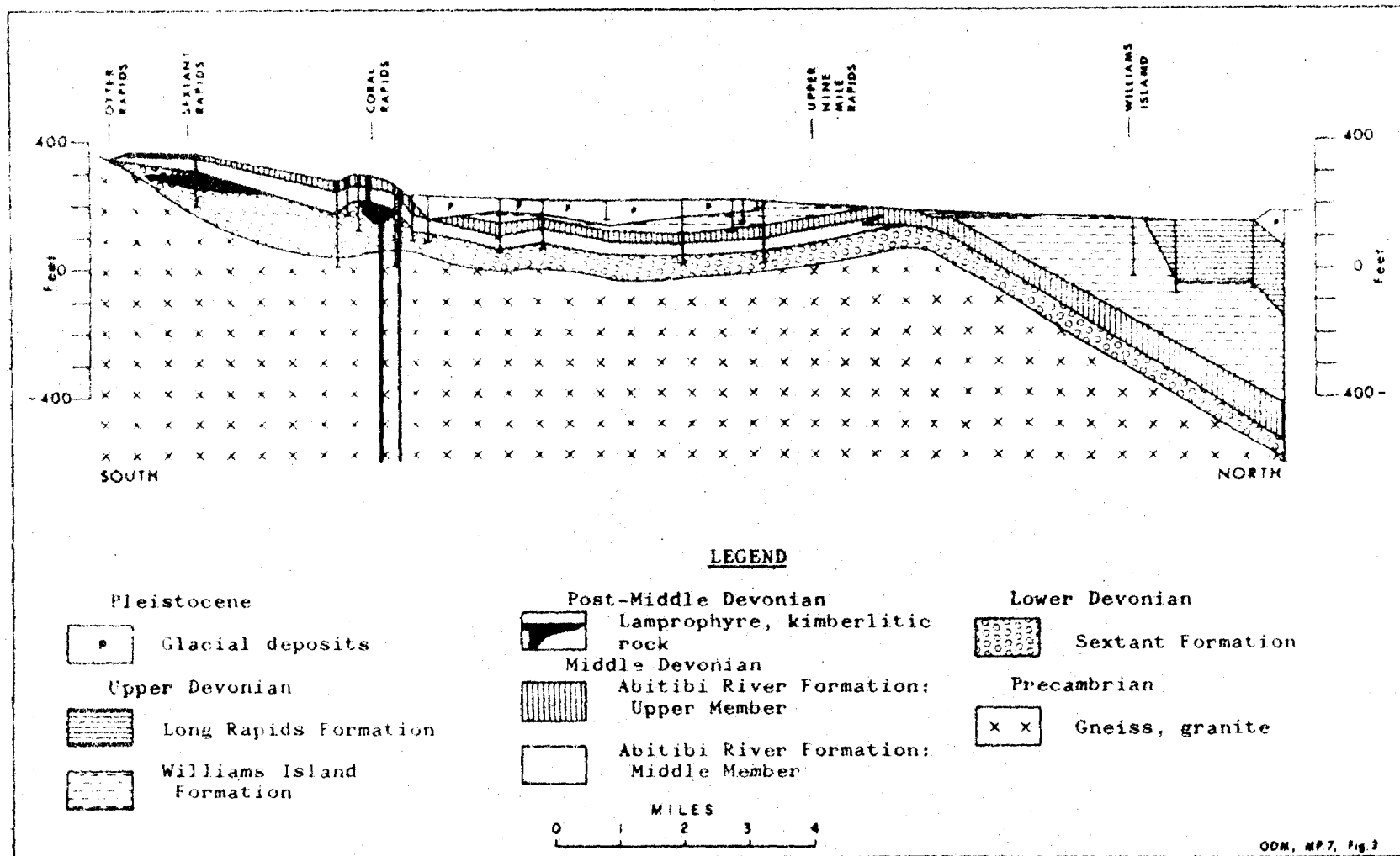


Figure 3 Geological section along the Abitibi River (modified from sections of Ontario Hydro)

ONT. DEPT. OF MINES
MINING LANDS BR.
THIS MAP FOR CHECKING
PURPOSES ONLY - MUST
NOT BE SOLD.

VALENTINE

DATE OF ISSUE
NOV 21 1967
ONTARIO DEPT. OF MINES

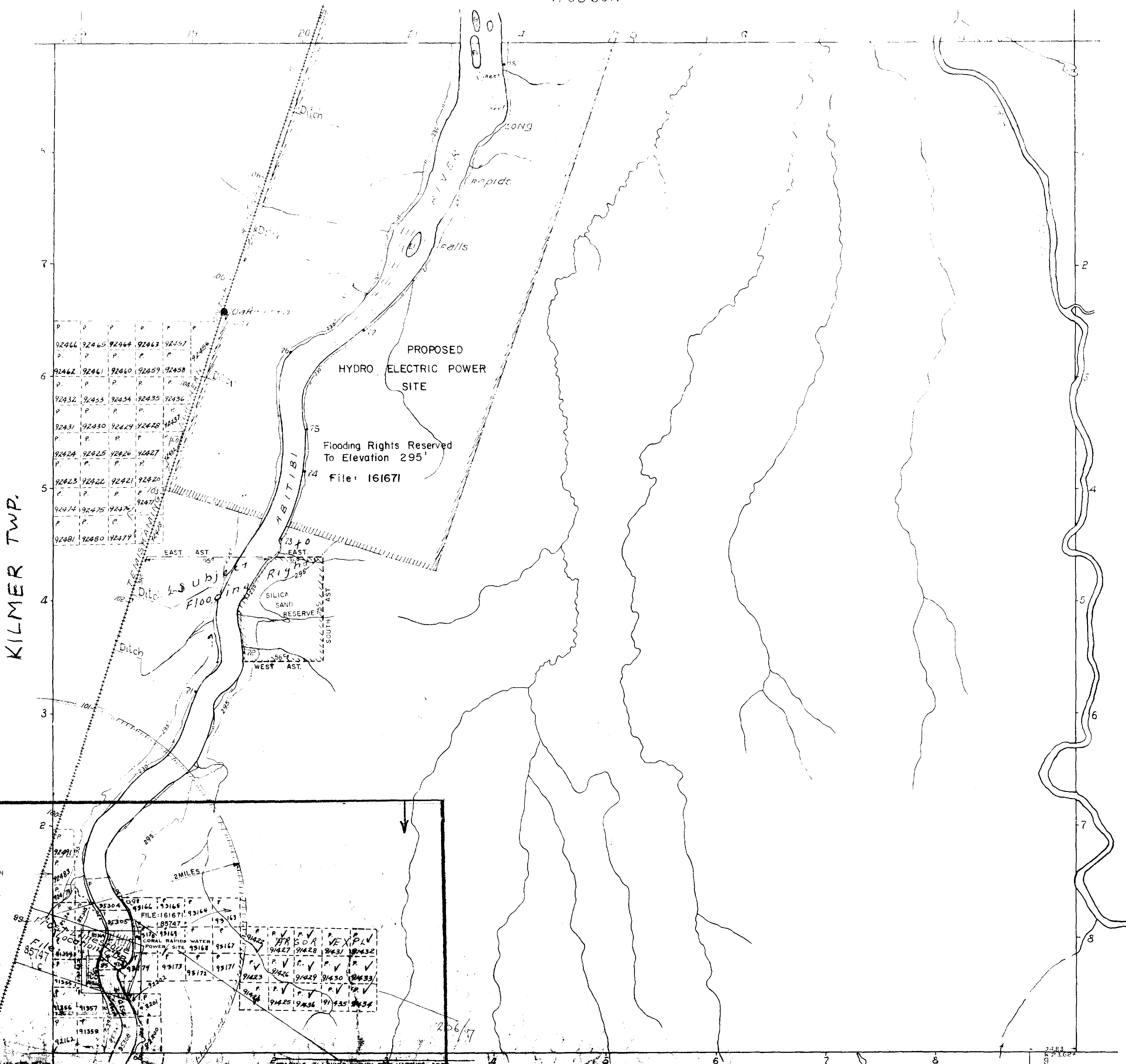
PORCUPINE MINING DIVISION

NOTE
400' Surface Rights Reservation
around all Lakes and Rivers.

Scale 40 Chains = 1 Mile

Staking allowed on bed of Abitibi River, subject to
flooding rights of H.E.P.C. with out compensation.
H.E.P.C. is relieved from all liabilities for damages
due to seepage and damages to sub-surface water
condition over claims in any part of the area which
might be caused by River level changes resulting from
Water Power Development.

HUBSON



KILMER TWP.

M 609

PIT TWP



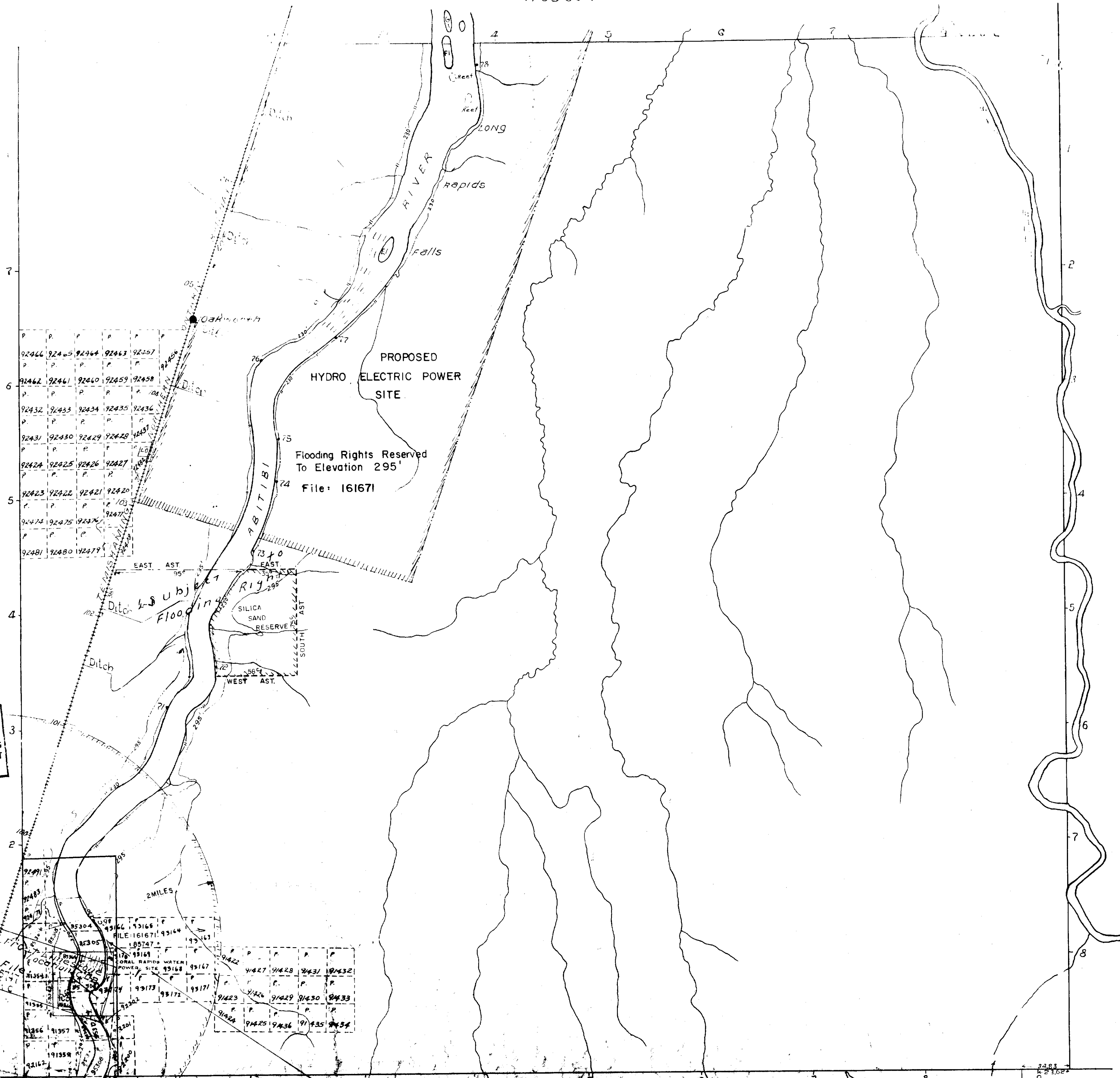
VALENTINE

PORCUPINE MINING DIVISION

Scale: 1" = 1000'

Staking allowed on bed of Abitibi River, subject to flooding rights of H.E.P.C. without compensation. H.E.P.C. is relieved from all liabilities for damages due to seepage and damages in sub-surface water conditions over claims in any part of the area which might be caused by River level changes resulting from Water Power Development.

HOBSON



P	P	P	P	P	P	P	P
92466	92465	92464	92463	92462	92461	92460	92459
P	P	P	P	P	P	P	P
92462	92461	92460	92459	92458	92457	92456	92455
P	P	P	P	P	P	P	P
92432	92433	92434	92435	92436	92437	92438	92439
P	P	P	P	P	P	P	P
92431	92430	92429	92428	92427	92426	92425	92424
P	P	P	P	P	P	P	P
92424	92425	92426	92427	92428	92429	92430	92431
P	P	P	P	P	P	P	P
92423	92422	92421	92420	92419	92418	92417	92416
P	P	P	P	P	P	P	P
92474	92475	92476	92477	92478	92479	92480	92481
P	P	P	P	P	P	P	P
92481	92480	92479	92478	92477	92476	92475	92474

ONT. DEPT. OF MINES
MINING LANDS BR.
THIS MAP FOR CHECKING
PURPOSES ONLY - MUST
NOT BE SOLD.

DATE OF ISSUE
OCT 16 1967
ONTARIO DEPT. OF MINES

92491	92492	92493	92494	92495	92496	92497	92498
P	P	P	P	P	P	P	P
92499	92500	92501	92502	92503	92504	92505	92506
P	P	P	P	P	P	P	P
92507	92508	92509	92510	92511	92512	92513	92514
P	P	P	P	P	P	P	P
92515	92516	92517	92518	92519	92520	92521	92522
P	P	P	P	P	P	P	P
92523	92524	92525	92526	92527	92528	92529	92530
P	P	P	P	P	P	P	P
92531	92532	92533	92534	92535	92536	92537	92538
P	P	P	P	P	P	P	P
92539	92540	92541	92542	92543	92544	92545	92546
P	P	P	P	P	P	P	P
92547	92548	92549	92550	92551	92552	92553	92554
P	P	P	P	P	P	P	P
92555	92556	92557	92558	92559	92560	92561	92562
P	P	P	P	P	P	P	P
92563	92564	92565	92566	92567	92568	92569	92570
P	P	P	P	P	P	P	P
92571	92572	92573	92574	92575	92576	92577	92578
P	P	P	P	P	P	P	P
92579	92580	92581	92582	92583	92584	92585	92586
P	P	P	P	P	P	P	P
92587	92588	92589	92590	92591	92592	92593	92594
P	P	P	P	P	P	P	P
92595	92596	92597	92598	92599	92600	92601	92602
P	P	P	P	P	P	P	P
92603	92604	92605	92606	92607	92608	92609	92610
P	P	P	P	P	P	P	P
92611	92612	92613	92614	92615	92616	92617	92618
P	P	P	P	P	P	P	P
92619	92620	92621	92622	92623	92624	92625	92626
P	P	P	P	P	P	P	P
92627	92628	92629	92630	92631	92632	92633	92634
P	P	P	P	P	P	P	P
92635	92636	92637	92638	92639	92640	92641	92642
P	P	P	P	P	P	P	P
92643	92644	92645	92646	92647	92648	92649	92650
P	P	P	P	P	P	P	P
92651	92652	92653	92654	92655	92656	92657	92658
P	P	P	P	P	P	P	P
92659	92660	92661	92662	92663	92664	92665	92666
P	P	P	P	P	P	P	P
92667	92668	92669	92670	92671	92672	92673	92674
P	P	P	P	P	P	P	P
92675	92676	92677	92678	92679	92680	92681	92682
P	P	P	P	P	P	P	P
92683	92684	92685	92686	92687	92688	92689	92690
P	P	P	P	P	P	P	P
92691	92692	92693	92694	92695	92696	92697	92698
P	P	P	P	P	P	P	P
92699	92700	92701	92702	92703	92704	92705	92706
P	P	P	P	P	P	P	P
92707	92708	92709	92710	92711	92712	92713	92714
P	P	P	P	P	P	P	P
92715	92716	92717	92718	92719	92720	92721	92722
P	P	P	P	P	P	P	P
92723	92724	92725	92726	92727	92728	92729	92730
P	P	P	P	P	P	P	P
92731	92732	92733	92734	92735	92736	92737	92738
P	P	P	P	P	P	P	P
92739	92740	92741	92742	92743	92744	92745	92746
P	P	P	P	P	P	P	P
92747	92748	92749	92750	92751	92752	92753	92754
P	P	P	P	P	P	P	P
92755	92756	92757	92758	92759	92760	92761	92762
P	P	P	P	P	P	P	P
92763	92764	92765	92766	92767	92768	92769	92770
P	P	P	P	P	P	P	P
92771	92772	92773	92774	92775	92776	92777	92778
P	P	P	P	P	P	P	P
92779	92780	92781	92782	92783	92784	92785	92786
P	P	P	P	P	P	P	P
92787	92788	92789	92790	92791	92792	92793	92794
P	P	P	P	P	P	P	P
92795	92796	92797	92798	92799	92800	92801	92802
P	P	P	P	P	P	P	P
92803	92804	92805	92806	92807	92808	92809	92810
P	P	P	P	P	P	P	P
92811	92812	92813	92814	92815	92816	92817	92818
P	P	P	P	P	P	P	P
92819	92820	92821	92822	92823	92824	92825	92826
P	P	P	P	P	P	P	P
92827	92828	92829	92830	92831	92832	92833	92834
P	P	P	P	P	P	P	P
92835	92836	92837	92838	92839	92840	92841	92842
P	P	P	P	P	P	P	P
92843	92844	92845	92846	92847	92848	92849	92850
P	P	P	P	P	P	P	P
92851	92852	92853	92854	92855	92856	92857	92858
P	P	P	P	P	P	P	P
92859	92860	92861	92862	92863	92864	92865	92866
P	P	P	P	P	P	P	P
92867	92868	92869	92870	92871	92872	92873	92874
P	P	P	P	P	P	P	P
92875	92876	92877	92878	92879	92880	92881	92882
P	P	P	P	P	P	P	P
92883	92884	92885	92886	92887	92888	92889	92890
P	P	P	P	P	P	P	P
92891	92892	92893	92894	92895	92896	92897	92898
P	P	P	P	P	P	P	P
92899	92900	92901	92902	92903	92904	92905	92906
P	P	P	P	P	P	P	P
92907	92908	92909	92910	92911	92912	92913	92914
P	P	P	P	P	P	P	P
92915	92916	92917	92918	92919	92920	92921	92922
P	P	P	P	P	P	P	P
92923	92924	92925	92926	92927	92928	92929	92930
P	P	P	P	P	P	P	P
92931	92932	92933	92934	92935	92936	92937	92938
P	P	P	P	P	P	P	P
92939	92940	92941	92942	92943	92944	92945	92946
P	P	P	P	P	P	P	P
92947	92948	92949	92950	92951	92952	92953	92954
P	P	P	P	P	P	P	P
92955	92956	92957	92958	92959	92960	92961	92962
P	P	P	P	P	P	P	P
92963	92964	92965	92966	92967	92968	92969	92970
P	P	P	P	P	P	P	P
92971	92972	92973	92974	92975	92976	92977	92978
P	P	P	P	P	P	P	P
92979	92980	92981	92982	92983	92984	92985	92986
P	P	P	P	P	P	P	P
92987	92988	92989	92990	92991	92992	92993	92994
P	P	P	P	P	P	P	P
92995	92996	92997	92998	92999	93000	93001	93002
P	P	P	P	P	P	P	P

STAKING ALLOWED WITHIN THE HATCHED AREA
SUBJECT TO FLOODING RIGHTS RESERVED TO ELEVATION 295'
FILE: 161671
H.E.P.C. IS RELIEVED FROM ALL LIABILITIES FOR DAMAGES
DUE TO SEEPAGE AND DAMAGES IN SUB-SURFACE WATER
CONDITIONS OVER CLAIMS IN ANY PART OF THE AREA WHICH
MIGHT BE CAUSED BY RIVER LEVEL CHANGES RESULTING FROM
WATER POWER DEVELOPMENT.



M609

LEGEND
 CANCELLED
 PATENTED LAND
 CROWN LAND SALE
 LEASES
 LOCATED LAND
 LICENSE OF OCCUPATION
 MINING RIGHTS ONLY
 SURFACE RIGHTS ONLY

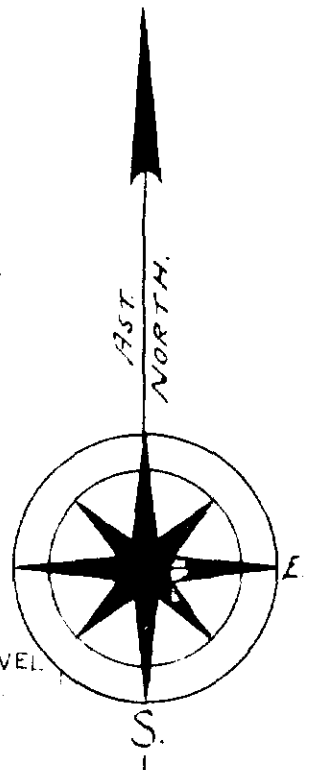
C
 P
 CS
 L
 LOC
 L.O.
 M.R.O.
 S.R.O.

PLAN OF HAMLET TWP.

PORCUPINE MINING DIVISION

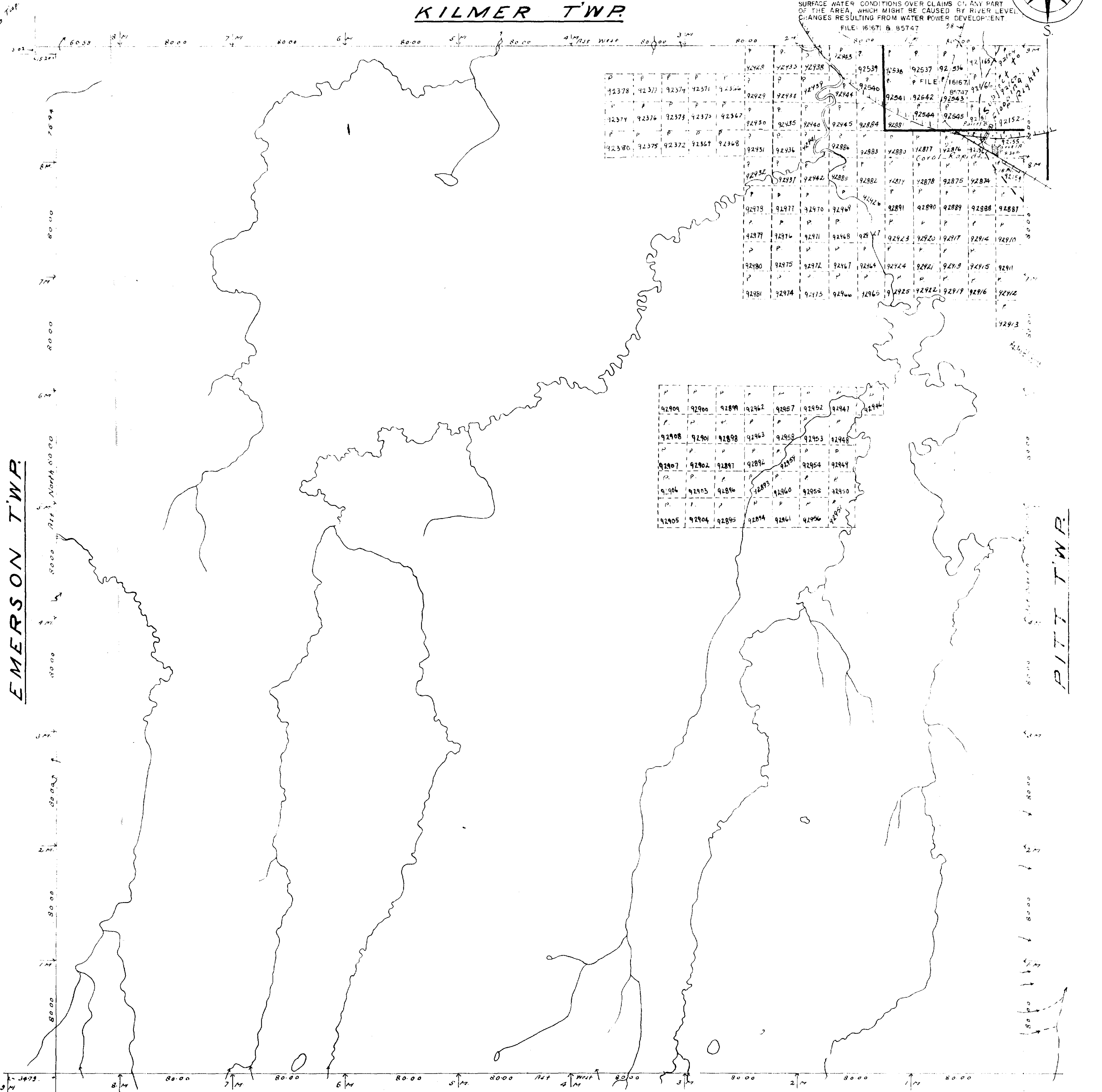
DISTRICT OF COCHRANE

Scale 40 chains to an inch.



STAKING IS ALLOWED WITHIN THE HATCHED AREA SUBJECT TO FLOODING RESERVATION TO CONTOUR 295' TO H.E.P.C. WITHOUT COMPENSATION. H.E.P.C. IS RELIEVED FROM ALL LIABILITIES FOR DAMAGES DUE TO SEEPAGE AND CHANGES IN SUB-SURFACE WATER CONDITIONS OVER CLAIMS OF ANY PART OF THE AREA, WHICH MIGHT BE CAUSED BY RIVER LEVEL CHANGES RESULTING FROM WATER POWER DEVELOPMENT.
 FILE: 161671 B. 85747

KILMER TWP.



92378	92379	92380	92381	92382	92383	92384	92385	92386	92387	92388	92389	92390	92391	92392	92393	92394	92395	92396	92397	92398	92399	92400	
92401	92402	92403	92404	92405	92406	92407	92408	92409	92410	92411	92412	92413	92414	92415	92416	92417	92418	92419	92420	92421	92422	92423	92424
92425	92426	92427	92428	92429	92430	92431	92432	92433	92434	92435	92436	92437	92438	92439	92440	92441	92442	92443	92444	92445	92446	92447	92448
92449	92450	92451	92452	92453	92454	92455	92456	92457	92458	92459	92460	92461	92462	92463	92464	92465	92466	92467	92468	92469	92470	92471	92472
92473	92474	92475	92476	92477	92478	92479	92480	92481	92482	92483	92484	92485	92486	92487	92488	92489	92490	92491	92492	92493	92494	92495	92496
92497	92498	92499	92500	92501	92502	92503	92504	92505	92506	92507	92508	92509	92510	92511	92512	92513	92514	92515	92516	92517	92518	92519	92520

92909	92910	92911	92912	92913	92914	92915	92916	92917	92918	92919	92920	92921	92922	92923	92924	92925	92926	92927	92928	92929	92930	92931	92932
92933	92934	92935	92936	92937	92938	92939	92940	92941	92942	92943	92944	92945	92946	92947	92948	92949	92950	92951	92952	92953	92954	92955	92956
92957	92958	92959	92960	92961	92962	92963	92964	92965	92966	92967	92968	92969	92970	92971	92972	92973	92974	92975	92976	92977	92978	92979	92980
92981	92982	92983	92984	92985	92986	92987	92988	92989	92990	92991	92992	92993	92994	92995	92996	92997	92998	92999	93000	93001	93002	93003	93004

400' Surface rights reservation around all lakes and rivers.

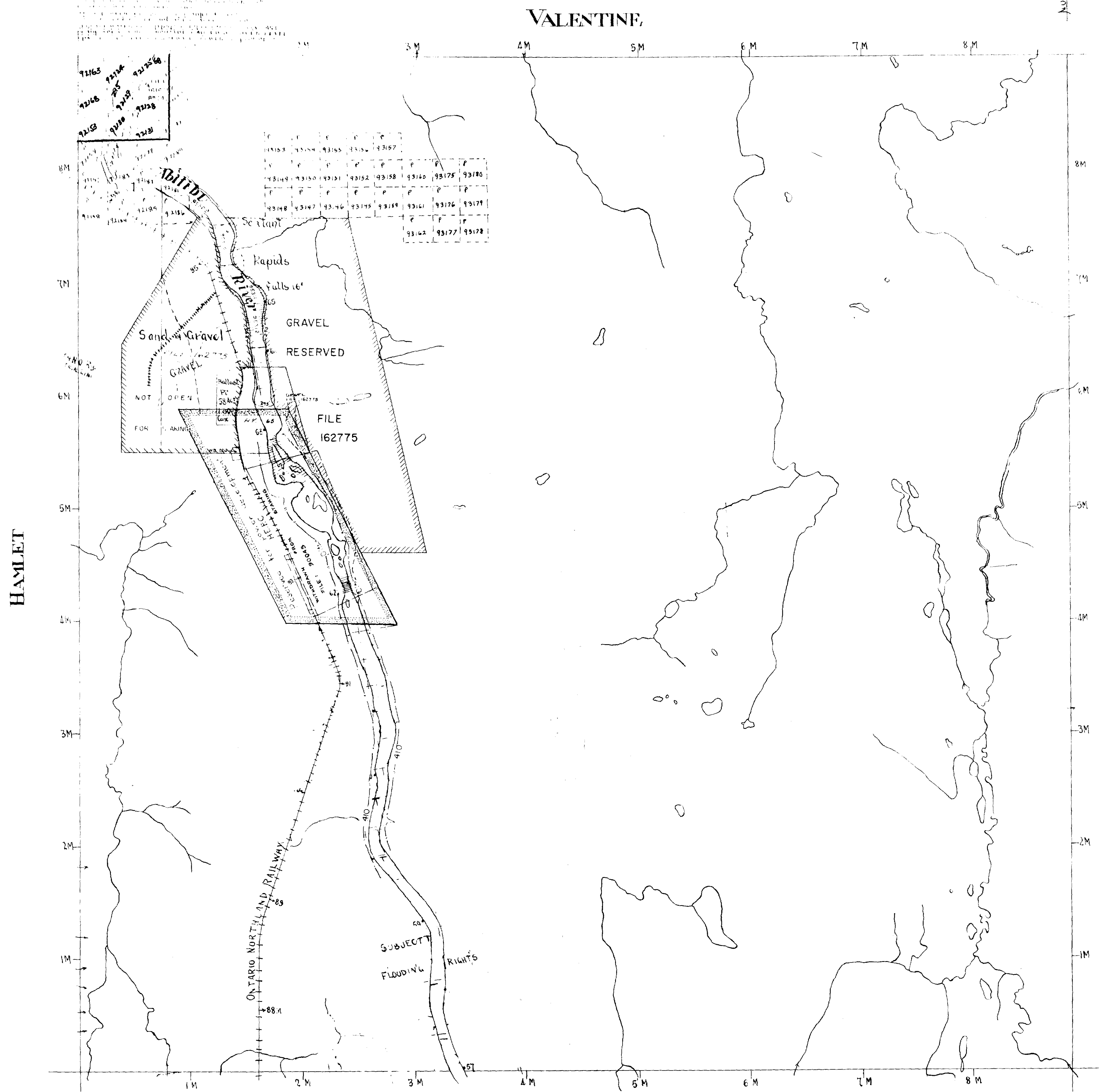
TRAIL TWP.





PORCUPINE MINING DIVISION
DISTRICT OF COCHRANE

Scale - 40 Chains - 1 inch



NOTES

Flooding Rights Reserved Up to Elevation of 230' B 295' Along the ABITIBI RIVER TO THE H.E.P.C. FILE: 161871

Flooding Rights Reserved Up To Elevation of 410' Along the ABITIBI RIVER TO THE H.E.P.C. FILE: 90045

400' Surface Rights Reservation around all Lakes and Rivers.

Staking allowed on bed of Abitibi River, subject to flooding rights of H.E.P.C. without compensation. H.E.P.C. is relieved from all liabilities for damages due to seepage and damages in sub-surface water conditions, over claims in any part of the area which might be caused by River Level changes resulting from Water Power Development, except in Power Development Area.

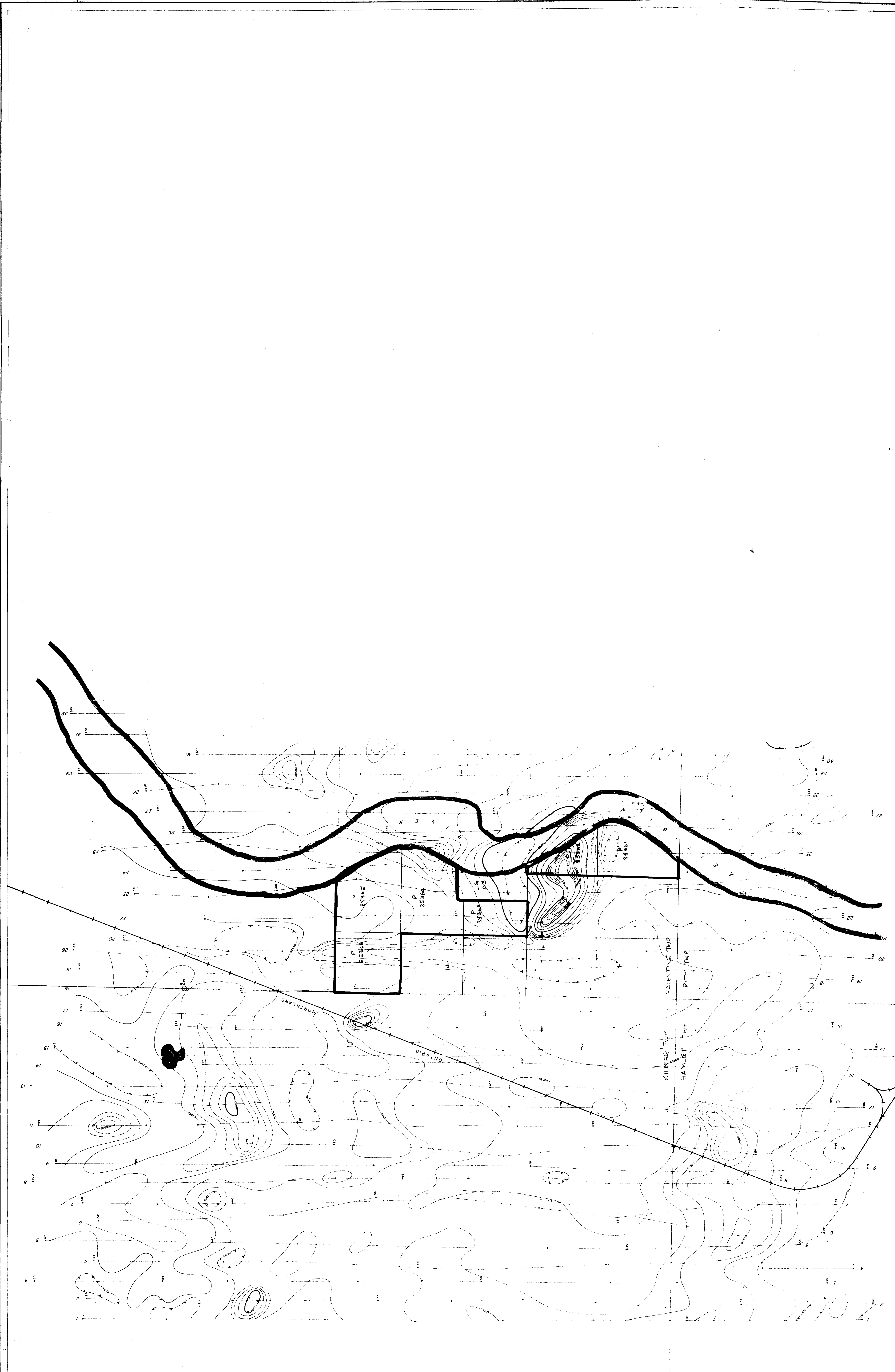
PARLIAMENT

LEGEND
 CANCELLED
 PATENTED LAND
 CROWN LAND SALE
 LEASES
 LOCATED LAND
 LICENSES
 DISPOSITION
 MINING

C
 C
 C.S.
 C
 Loc.
 L.O.
 M.S.P.
 R.S.O.

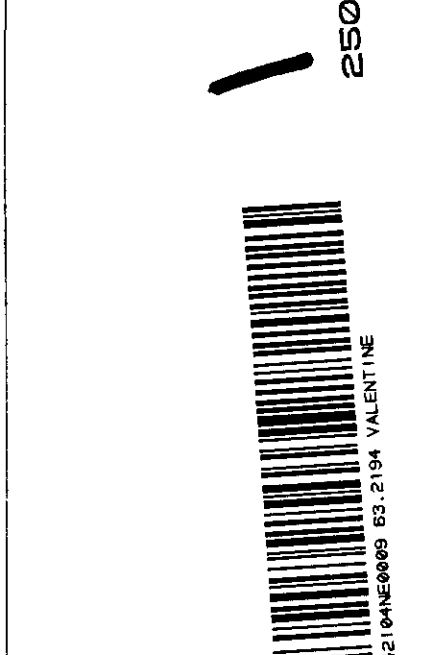
M569





ARGOR EXPLORATIONS LTD.
 Aeromagnetic Survey
 TOTAL INTENSITY CONTOURS
 VALENTINE AREA

LEGEND
 10 ft Contour interval
 500 ft Contour interval
 100 ft Contour interval
 50 ft Contour interval
 10 ft Contour interval
 Depression
 Flight line



From by NIAGARA HELICOPTERS LTD.
 Niagara Falls, Ontario
 Compilation & Drafting by
 BARRINGER RESEARCH LTD.
 Toronto, Canada
 Mar-April-May 1967

[Signature]