



CONDENSED HISTORY

ON

- (1) GROUND MAGNETOMETER SURVEY
- (2) DIAMOND DRILLING

ROSS MINING SYNDICATE CLAIMS (F.L. Flatt)
RENESIG, ONTARIO

INTRODUCTION

F.L. FLATT

The Ross Mining Syndicate of Kapuskasing Ontario was formed in 1955 and staked 31 unpatented claims in the Renesig Creek Area of the District of Cochrane. This area lies in unsurveyed territory to the west of the Townships Russell and Scott and wholly within the Porcupine Mining Division.

F.L. FLATT

The Syndicate's claims are contiguous and adjoin the Placinta Exploration Syndicate's claims to the west. The claims were staked chiefly for iron, since magnetite was reported to have been found in an old test pit on the Placinta ground. Preliminary magnetic surveys indicated that the anomalous trend entered into the area now covered by the Ross Syndicate claims.

F.L. FLATT

The Ross Syndicate's claims were offered for option to G. G. Huston & Associates, 2000-80 Richmond Street West, Toronto, in January 1956. A preliminary evaluation of the ground was made by means of a ground magnetic survey in February 1956. The results were sufficiently encouraging to warrant taking an option for the period April 8 to July 8, 1956. During this period diamond drilling was carried out.

The area is accessible by float and ski-equipped aircraft.

The present report will outline, as two topics, the geophysical work and diamond drilling completed on certain claims of the Ross Syndicate's property.

GROUND MAGNETOMETER SURVEY

Area Surveyed

A total of five claims were covered by the ground magnetometer survey, and these are the following:

- | | | |
|-----------|---------|-----------|
| S 04032 ✓ | S 04033 | S 04036 ✓ |
| S 04034 | S 04035 | |

This survey was carried out under the direction of G. G. Huston & Associates over the period February 1st to February 6th inclusive, 1956.

The instrument used was a 'Sheep' vertical intensity magnetometer having a sensitivity of 1/6 gamma per scale division. For this survey, 1 1/2 miles of lines were cut and 291 stations were established.

The normal station interval was 100 feet with closures to 25 and 50 feet over areas of radical intensity variations. The line intervals were at either 100 or 650 foot intervals, depending upon the judgment of the operator.

A survey of the adjoining Livabista Syndicate's claims followed the completion of this program.

Remnant Survey Results

The continued magnetic intensity data indicated that an area of approximately 1/3,700 square feet had an anomalous relief in unknown excess of 40,000 gamma over a background of 5,000 gamma.

The anomaly varied an indicated length of 2500 feet with an average width of 240 feet.

Interpretation

The continued data outlined a pattern which is generally indicative of an iron formation. The strike of the formation is approximately east-west and the indicated dip is steeply north or vertical.

The large area of high magnetic relief was considered to be a localized deposition of magnetic within the iron formation. Its location (from the enclosed plan) appears to be controlled by drag folding in the formation.

Because of the magnetic intensity and from the profile across the anomaly, the deposit was interpreted to lie at shallow depth - in the order of 15 to 20 feet.

Since the entire area is swampy and no outcroppings of rock were observed, any geological interpretations must be derived from the magnetic pattern. The high intensity and the area over which it lies were sufficiently encouraging to warrant further investigations by diamond drilling.

Estimated Cost of Time Now Required for Survey

The following is a distribution of time required by the various individuals actively engaged with carrying out the survey and interpreting the results.

(1) Iron Studies

(a) H. Conant, Vaughan, Ontario 6 days
February 1st to February 6th 1956.

(b) G. Wilson, Vaughan, Ontario 6 days
February 1st to February 6th 1956

(2) Instrument Operation & Technical Assistance

(c) P. Peck, P. Eng. 6 days
2001-50 Richmond St. West, Toronto, Ont.
February 1st to February 6th 1956.

(d) R. G. Kays, P. Eng. 3 days
2001-50 Richmond St. West, Toronto, Ont.
February 1st to February 3rd 1956.

(e) J. Peck 6 days
Ingram, Ontario.
February 1st to February 6th 1956.

(3) Geophysics

L. R. Johnson, P. Eng. 6 days
2001-50 Richmond St. West, Toronto, Ont.
February 1st to February 6th 1956.

(4) Drilling

R. Harrison 9 days
2001-50 Richmond St. West, Toronto, Ont.
February 13th to February 22nd.

TOTAL MAN-DAYS 53 days

ASSUMEDLY NONE OTHER - 200 days

DRILLED DEPTH - SEE NOTE, LAST PAGE

Interpretation

The ground magnetometer survey of five sites in the Iron-Sulfide Mine exhibited an anomaly having a high vertical intensity according to test in course of 100/50 yards test. Further, the survey results were interpreted to indicate that a concentration of magnetite ore exists in the area, although no outcroppings were observed.

Consequently, it was decided to initiate a diamond drilling program for the preliminary purposes of giving:

- (1) Geological and mineralogical cross-sections of the zone.
- (2) Average estimate.
- (3) Material for assay.
- (4) Evaluation of the ground.

The program was initiated on May 15th and completed on June 20th 1936.

Drilling Results and Interpretation

Accompanying this report are plans and sections, together with logs and analyses of the holes which are self explanatory. Two holes only were drilled. Hole No. 1 is located in the southeast corner of Claim No. 8482. More precisely, the collar is 232 feet on an astronomical bearing of N 6° E from the No. 3 post of that claim. Hole No. 2 was collared in the southeast corner of Claim No. 8483 and is 288 feet on an astronomical bearing of due west from post No. 2 of that claim.

Two holes only were drilled.* The reasons for curtailing the program were as follows:

- (1) The analysis of the core from the first hole showed an excessive ✓
oxide content.
- (2) The permeability value in this case hole was approximately 25% ✓
less than indicated by the register.

With the completion of the second hole it was concluded that the average grade potential of the deposit were insufficient for present economic requirements. Consequently, the option was dropped.

A number of conclusions were reached as the result of correlation between the registers and drilling:

- (1) The average depth of oxidation was found to be 15 feet. This ✓
exceeds all the interpretations from the magnetic profiles.
- (2) The irregular decrease in permeability of the magnetic ✓
deposit as outlined by the registers, was attributed to the porosity of the magnetic to the surface with its divergent absorption.
- (3) Of the 159,000 square feet of high intensity zone outlined by ✓
the magnetic survey, a reduction of 25 to 30% in actual area has been indicated by drilling.
- (4) The deposit probably extends to considerable depth.
- (5) It is probable that any other section in the outlined zone ✓
contains smaller deposits of magnetic of significant size.

Memorandum of Agreement, Credit

H-213 Hole No. 1 was completed at a depth of 731 feet and Hole No. 2 was drilled to a depth of 393 feet. The core was AX or B-3/4" in diameter. The aggregate footage drilled was 1124 feet. Under section 83 paragraph 26, a credit of 100% core is applied for credit over the following group of eight claims:

| | | | |
|---------|---------|---------|---------|
| S 81550 | S 81552 | S 81553 | S 81554 |
| S 81550 | S 81551 | S 81552 | S 81553 |
| | | | S-93835 |

The drilling was carried out under contract by Bradley Bros. Limited, Havana, Cuba.

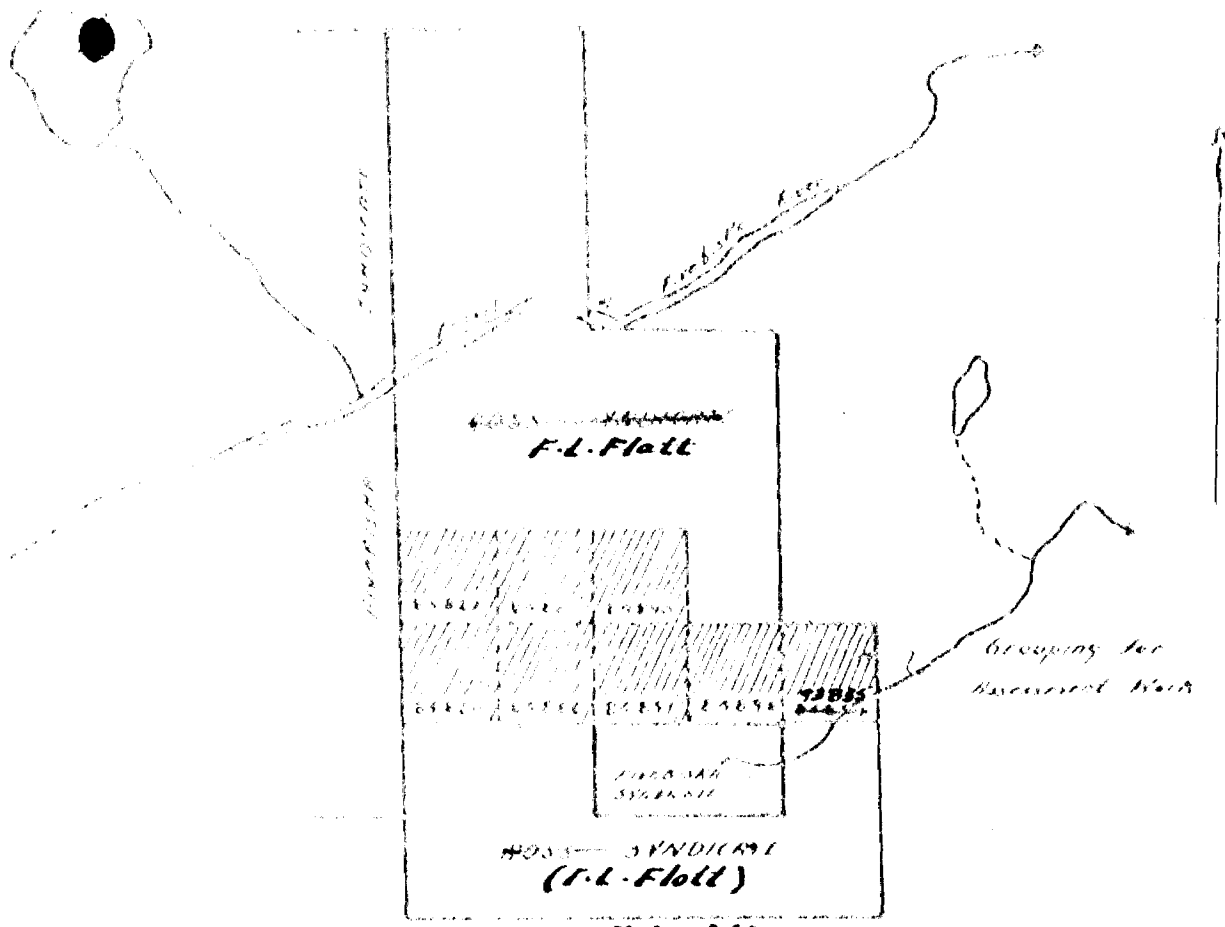
All of which is certified correct by G. C. Hubert & Associates.

G. C. HUBERT & ASSOCIATES,

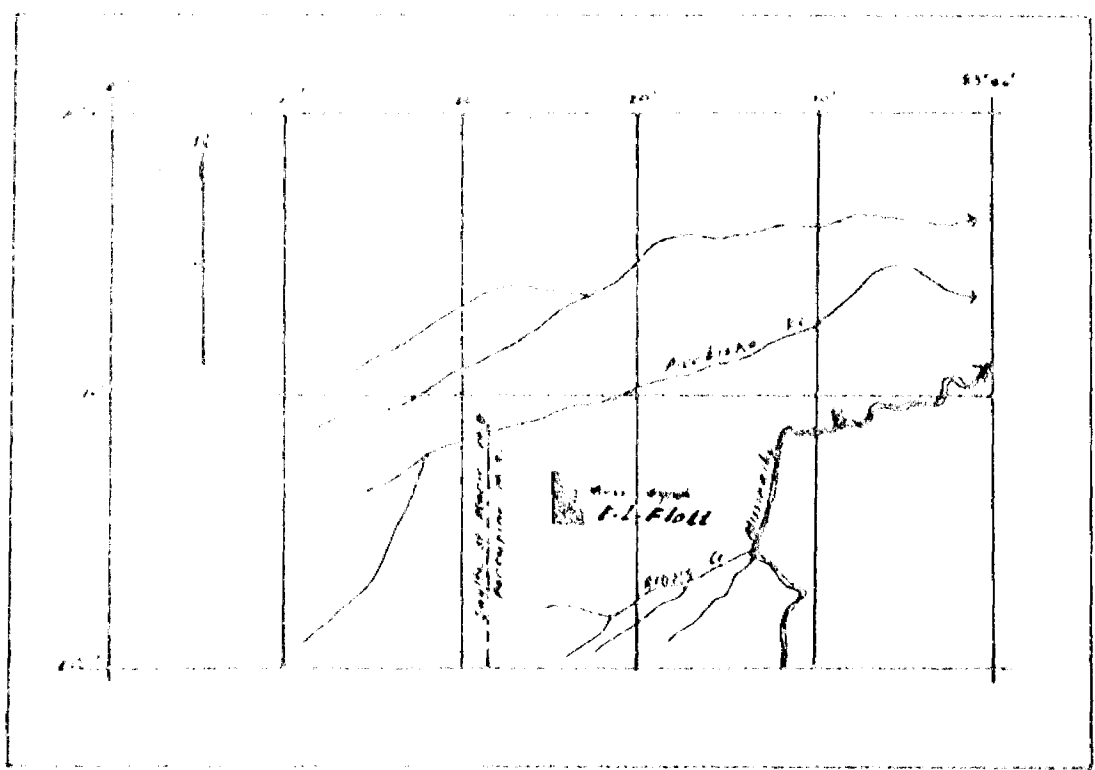
G. C. Hubert
 G. C. Hubert, P. Eng.

[Signature]
 E. C. Boyd, P. Eng.

10/1/50



F.L. FLATT
~~FORM - BOSS-SYNDICATE CLAIMS~~
 Scale: 1" = 1/4 mi.



F.L. FLATT
 FORM - GEOGRAPHIC LOCATION - BOSS-SYNDICATE
 Scale: 1" = 8 mi.

MAGNETOMETER STATION WITH VALUE IN THOUSANDS OF GAMMA
MAGNETIC CONTOUR
CONTOUR INTERVAL 5000 GAMMA

RENSIG CREEK AREA

ROSS MINING SYNDICATE

DATE 28/2/58

F.L. FLATT

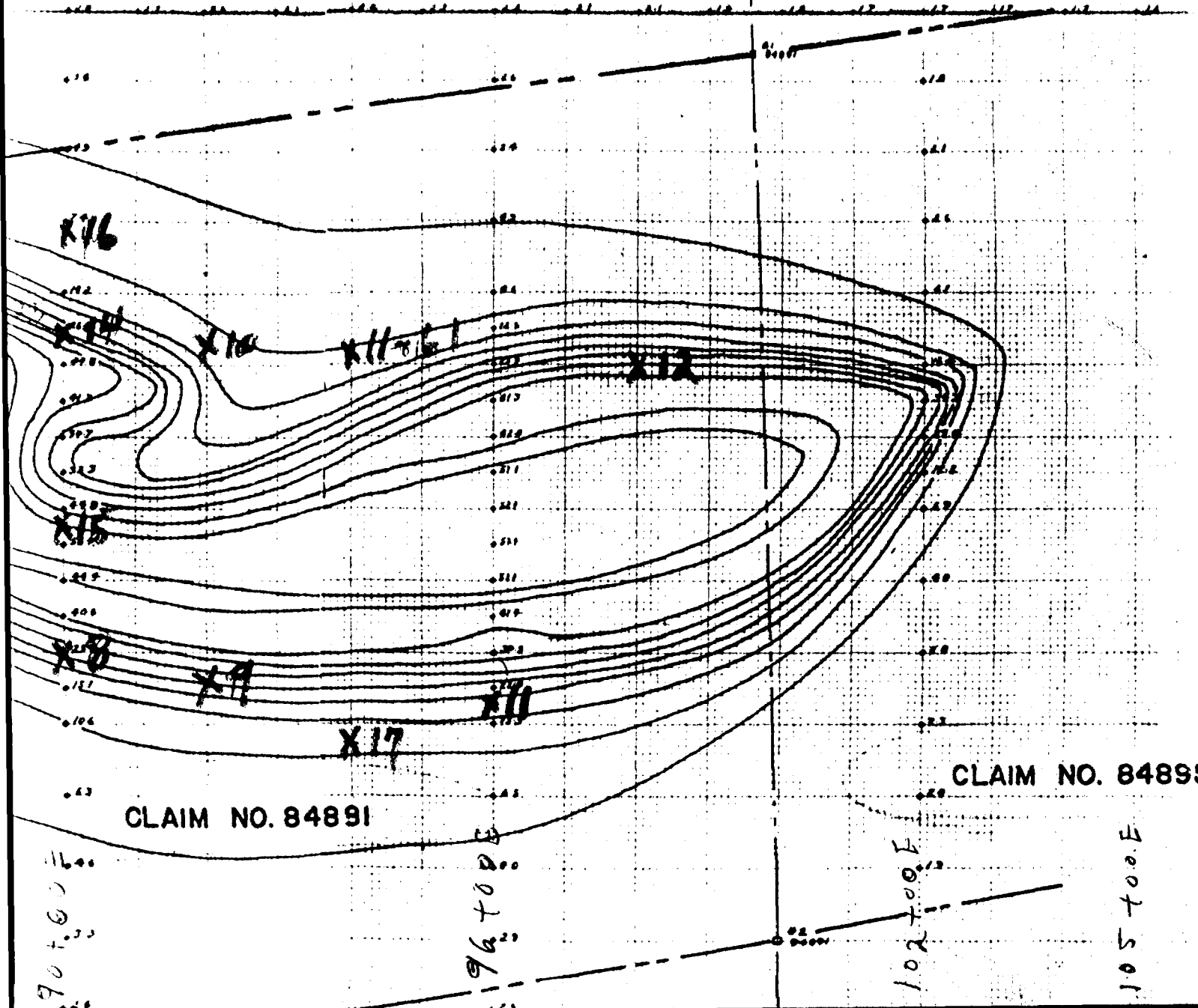
Taken from Folio 63,779

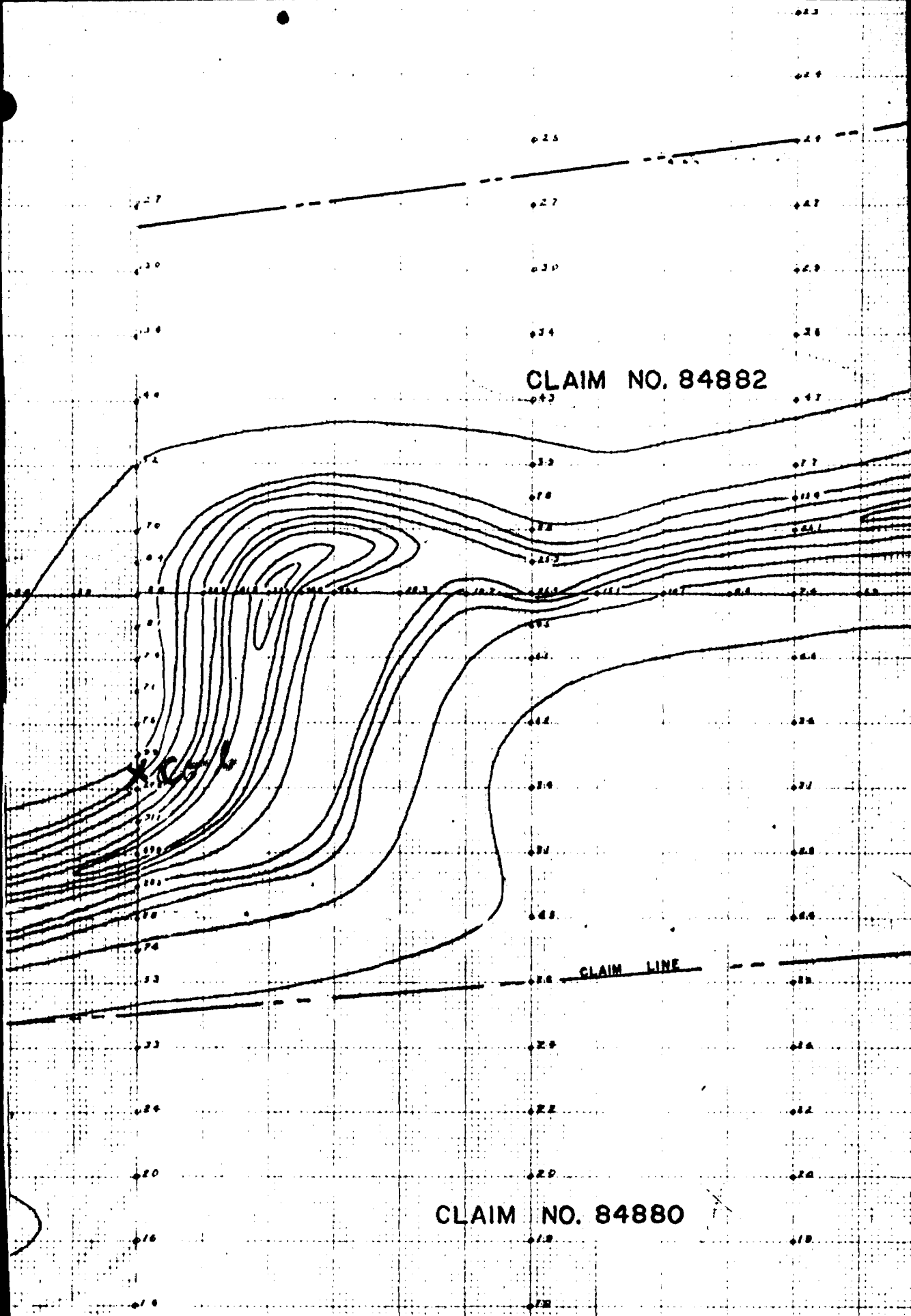
IM NO. 84890

CLAIM NO. 84894

1" = 200'

x - drill holes
1 - 61 - drilled in 1961
1 - drilled in 1962





CLAIM NO. 84882

CLAIM LINE

CLAIM NO. 84880

52+00 F

58+00 E

62+00 F

CLAIM NO. 84885

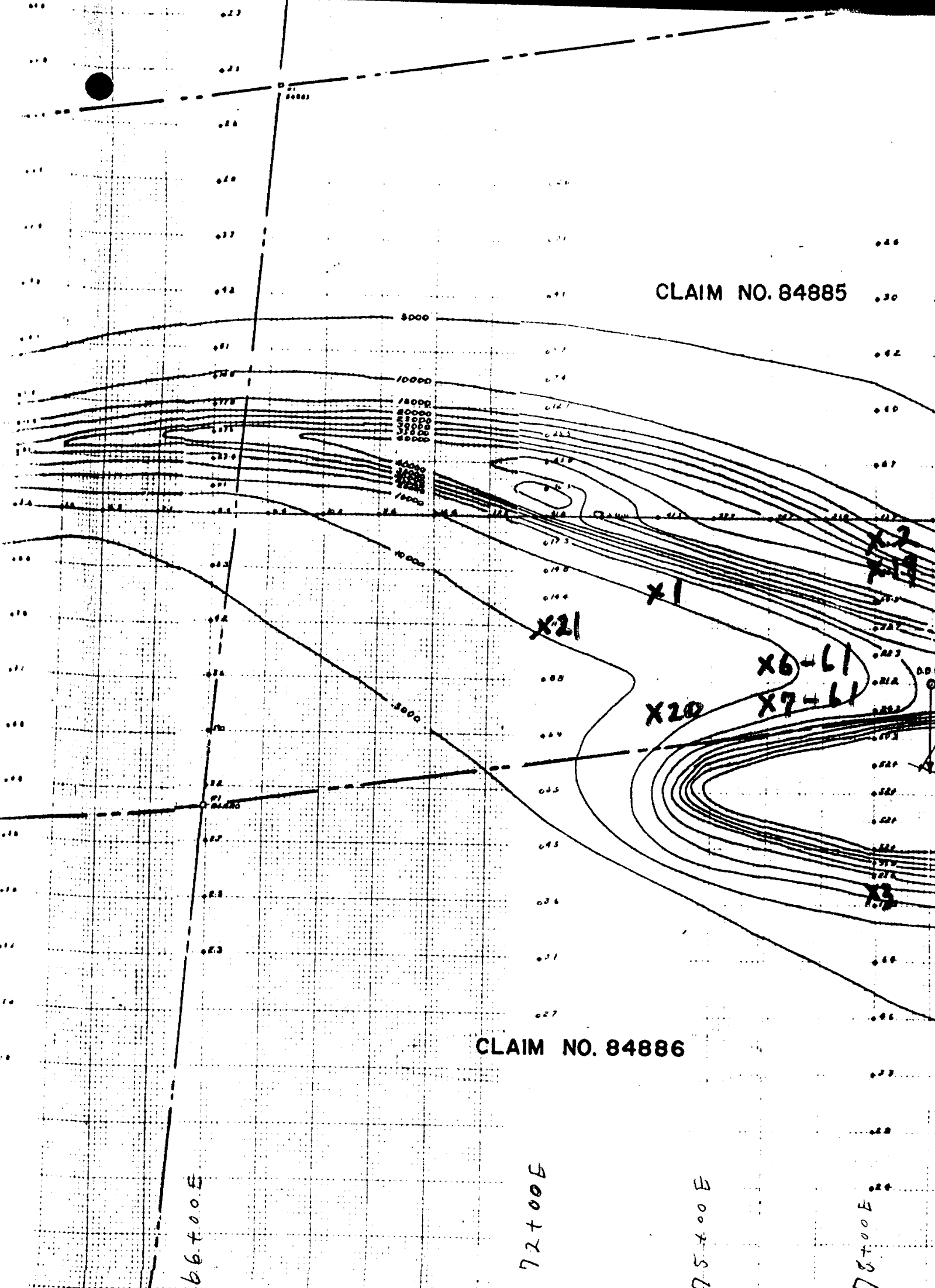
CLAIM NO. 84886

66+00 E

72+00 E

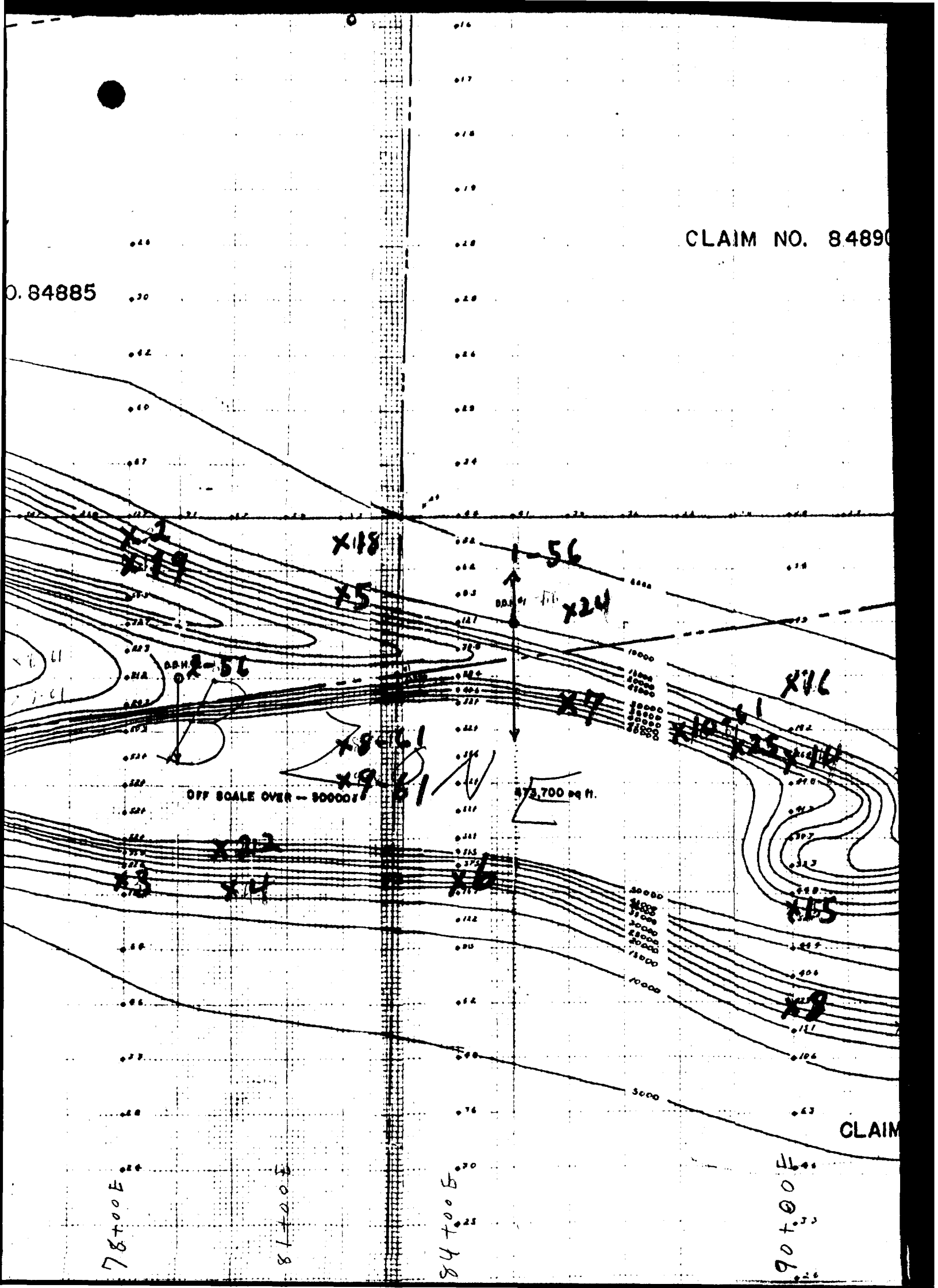
75+00 E

78+00 E



CLAIM NO. 84890

0.84885



OFF SCALE OVER - 80000

572,700 sq ft.

78+00 E

81+00 E

84+00 E

90+00 E

CLAIM

MAP No. 2
 HEARST MAGNETITE
 CONTOURS OF VERTICAL MAGNETIC INTENSITY

SCALE 1" = 100'

LEGEND

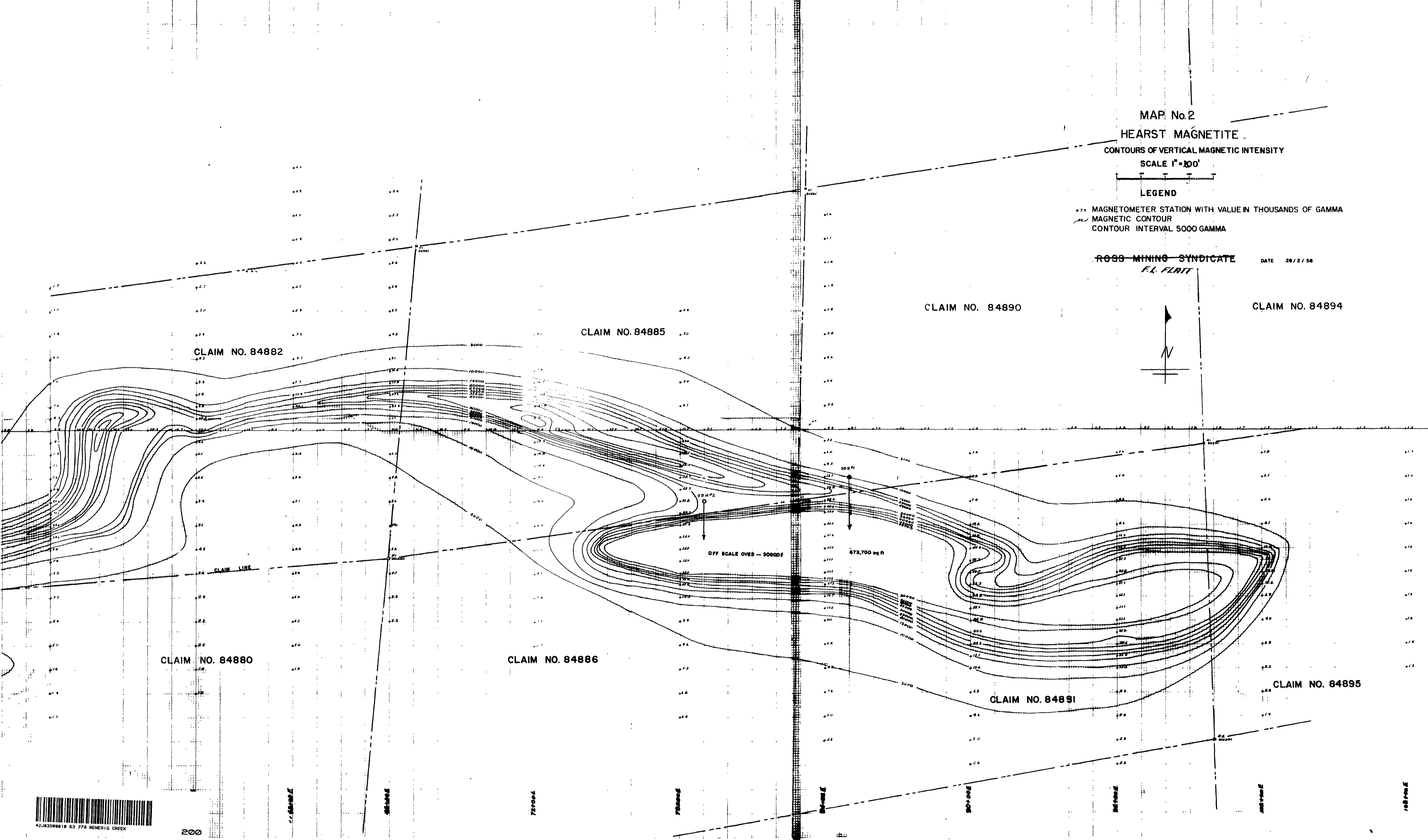
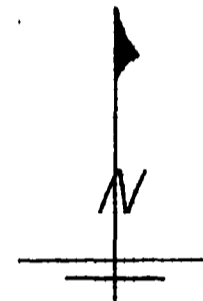
- 75 MAGNETOMETER STATION WITH VALUE IN THOUSANDS OF GAMMA
- MAGNETIC CONTOUR
- CONTOUR INTERVAL 5000 GAMMA

ROSS MINING SYNDICATE
 F.L. FLATT

DATE 28/2/58

CLAIM NO. 84890

CLAIM NO. 84894



4203309018 63 779 RENESIG CREEK