



42L03NW0013 13 SUNI

010

Diamond Drilling

Township of SUNI (Paska)

Report No 13

Work performed by: Can-Fer Mines Ltd.

Claim No	Hole No	Footage	Date	Note
KK 18208	B-1	882'	Aug/58	
	B-2	134'	Sept/58	
KK 18210	B-3	584'	Sept/58	
	B-4	520'	Sept/58	
KK 20184	B-6	425'	Oct/58	
	B-7	397'	Oct/58	
KK 19891	B-8	269'	Oct/58	
KK 18209	B-9	599'	Nov/58	
	B-10	518'	Nov/58	
	B-11	622'	Nov/58	
	B-12	627'	Dec/58	
	B-13	442'	Jan/59	
	B-14	247'	Jan/59	
	B-15	546'	Jan/59	
	B-19	460'	Feb/59	
	B-20	1149'	Mar/59	
	B-21	702'	Apr/59	
	B-24	275'	Dec/60	
	B-25	249'	Dec/60	
	B-26	219'	Dec/60	
	KK 18208	B-16	559'	Jan/59
KK 18205	B-17	513'	Jan/59	
	B-18	437'	Feb/59	
	B-23	599'	Nov/60	
KK 20185	B-22	856'	Apr/59	
KK 20186	B-28	395'	Jan/61	
	B-29	272'	Feb/61	
KK 20184	B-27	431'	Jan/61	

NOTES.

13928'

Report 13  
PASKATUP  
(New South)

DIAMOND DRILL RECORD

Hole No. B-1

PROPERTY CAN-FER MINES LTD.

Sheet No. 1

CENTRAL GNAMMAN RANGE

Location: Claim No. KK 18208

Lat. 4810 N

Dep. 6800 E

Elevation of Collar

Datum

Bearing South

Direction at Start:

Dip 45° S.

Started August 17, 1958  
Completed September 4, 1958  
Ultimate Depth 882  
Proposed Depth

Date	Feet Drilled	Total Depth	Section		Remarks (Log)
			From	To	
	0				Overburden
	34			184	Magnetite iron formation. Fe 30%.
					Magnetite with some argillaceous material is interbanded with greywacke. The individual layers are about one sixteenth of an inch thick, but there is very little material between adjacent layers, and they form bands one eighth of an inch to six inches thick. The magnetite is fine grained, and in places there is accessory pyrite, and in places accessory specularite. There are numerous 4" mail seams with a relict structure suggesting they formed an intraformational conglomerate. There is a fair amount of drag folding, but most of the banding is at 50° to the core. Jasper bands are common, especially from 160-182. The magnetite is strongly polarized.
			184		Barren Greywacke. Low shear at 60° to the core.
			208		Magnetite greywacke. Fe 20%
			230		Barren greywacke

Drilled by Cameron Diamond Drilling Co.

Engineer in Charge

DIAMOND DRILL RECORD

PROPERTY CAN-FER MINES LTD.

CENTRAL ONAMAN RANGE

Hole No. B-1

Sheet No. 2

Location: Claim No. KK 18208

Lat. 4810 N

Dep. 6800 E

Elevation of Collar \_\_\_\_\_

Datum \_\_\_\_\_

Bearing South

Direction at Start: Dip 45° S

Started August 17, 1958  
 Completed Sept. 4, 1958  
 Ultimate Depth 825'  
 Proposed Depth \_\_\_\_\_

Date	Feet Drilled	Total Depth	Section		Feet	Remarks (Log)
			From	To		
			235	242		Magnetite iron formation. Fe 30%
			242	307		Barren greywacke. Massive, medium to course grained. 301-307. Fine grained with low shear at 550 to core.
			207	435		Magnetite iron formation. Fe 30%. Patches of jasper bands throughout the formation.
			435	610		Barren greywacke. Mainly massive and medium grained. Few argillaceous bands at 500 to core. Accessory pyrite
			610	830		Magnetite iron formation. Fe 30%. 5% jasper bands to 801. Then no jasper except 821-822. Minor haematite and rare accessory pyrite
						Banding at 610 - 600 to core
						650 - 450
						652 - 661 drag folding
						667 - 710 "
						780 - 800 to core
						825 - 50 "

Drilled by CAMERON DIAMOND DRILLING CO.

Engineer in Charge \_\_\_\_\_



DIAMOND DRILL RECORD

Hole No. B-2

PROPERTY CAN-FER MINES LTD.

Sheet No. \_\_\_\_\_

Central Onaman Range

Location: Claim No. \_\_\_\_\_

Lat. 4760 N

Started September 5, 1958

Dep. 6800 E

Completed September 6, 1958

Elevation of Collar \_\_\_\_\_

Ultimate Depth 134

Datum \_\_\_\_\_

Proposed Depth \_\_\_\_\_

Bearing Due North

Direction at Start: \_\_\_\_\_

Dip 0° - 45° , 134° - 43°

Date	Feet Drilled	Total Depth	Section		Feet	Remarks (Log)
			From	To		
	0			35		overburden
	35			60		magnetite iron formation, Fe 30%
	60			86		Bands at 45° to core. Jasper 50-52
	86			134		Magnetite Fe formation. Fe 15%
						Minor siliceous sediments. Mainly fine grained
						Minor magnetite. Low shear and banding
						at 350 to core.
	88			90		Minor pyrrhotite, accessory pyrite
						and chalcopyrite.
	92			94		25% pyrrhotite, 5% pyrite, accessory
						chalcopyrite
	98			100		20% pyrrhotite, accessory chalcopyrite

Drilled by Cameron Drilling Company

B. K. Swick  
Engineer in Charge



# DIAMOND DRILL RECORD

PROPERTY Geo-Dee Mines Ltd. Central Ontario Range HOLE No. 2-3

SHEET NUMBER 2 SECTION FROM          TO          MARKS         

LATITUDE          LONGITUDE         

DATE          TIME         

DRILLER          SUPERVISOR         

DEPTH FEET	FORMATION	SAMPLE No.	FEET	IN	FEET	FEET	FEET	FEET	FEET
157-260	Darken light grey argonaceous. Includes 10 45° to 60°								
160-260	argonaceous from formation. To 157° bands at 50° to 60°								
160-112	argonaceous from formation. To 100°. Includes at 45° to 60°. Red								
	FOLDING FROM 157-260 AND 160-260. 5% IMPURE FROM 157-260.								
112-152	argonaceous from formation. To 100°. Includes at 50°. 100-112 Darken								
	quartz veins.								
150-309	Darken argonaceous.								
159-196	argonaceous from formation. To 157°. Includes at 50°.								
158-115	Light grey argonaceous dark. Fine argonaceous from								
	158-115 Darken argonaceous of argonaceous. Includes at 50°.								
107-093	argonaceous from formation. To 157°. Includes at 50°.								
	to 107° at 45°.								
103-445	argonaceous from formation. To 107°. Includes at 50°.								
	Includes argonaceous 45° to 60°.								
145-260	argonaceous from formation. To 145°. Includes at 45°.								
	(157-260)								

J. B. [Signature]





# DIAMOND DRILL RECORD

18210

PROPERTY CAN FER MINES LTD. CENTRAL DUMFRIES HOLE No. B-4

SHEET NUMBER 1 SECTION FROM          TO          STARTED          COMPLETED         

LATITUDE 46+50N DATUM         

DEPARTURE 44+00E BEARING S 011 W ULTIMATE DEPTH         

ELEVATION          DIP -45° PROPOSED DEPTH 650'

DEPTH FEET	FORMATION	SAMPLE NO.	FROM	TO	WIDTH	ASSAY VALUES	
0-44	OVERBURDEN						
44-85	GRENSCHKE, MOSTLY DARK GREY TO BLACK, OCCASIONALLY GREEN. SOME SMALL QUARTZ STRINGS. BANDS AT 60°						
85-108	CHERTY BK. DARK GREY TO NOTED GREEN. SOME SMALL QUARTZ STRINGS. BANDS AT 55° TO CORE.						
108-128	CHERTY BK. DARK GREY TO NOTED GREEN. SOME SMALL QUARTZ STRINGS. BANDS AT 55° TO CORE.						

128-148 INTERBEDDED BLUE GRAY CHERT

8 GREY SLACK GALT - Bands at 60°

P. H. B.

# DIAMOND DRILL RECORD

PROJ. RTY CON FERMINES LTD. CENTRAL DIAMANT R. HOLE No. B-4

SHEET NUMBER 2 SECTION FROM ..... TO ..... STARTS ..... COMPLETES .....

LATITUDE ..... DATA .....

DEPARTURE ..... BEARING ..... ULTIMATE DEPTH .....

ELEVATION ..... DR ..... PROPOSED DEPTH .....

DEPTH FEET	FORMATION	SAMPLE NO.	FROM	TO	WIDTH	ASSAY VALUES	
140-163	IMPURE GREY BLK. CHERT						
163-181	CRACKY GREY BLK. GWK.						
	CHUNKY SEAMS						
182-192	LIGHT GREY GWK. BANDING AT 70°						
192-195	IRON FORMATION 25% Fe						
	BANDING AT 70°						
195-218	DARK GREY GWK. BANDING AT 60°						
218-220	IRON FORMATION, FE 30%	H-1	218	220	2'	23.15	
	BANDING AT 65°						
220-224	MATT. TO BULKY. SOME MOTTLED						
	DEGRADATION						
224-238	MATT. TO BULKY. IF 30% Fe	H-2	224	238	14'	22.11	
238-244	M.I.F. - 15% Fe - banding	H-3	238	249	11'	18.03	
	© 60°						

# DIAMOND DRILL RECORD

PROPERTY *CANFER MINES LTD. CENTRAL DUNSMUIR RANGE* HOLE NO. *B-4*

SHEET NUMBER *3* SECTION FROM ..... TO .....

LATITUDE ..... DATUM ..... COMPUTED .....

DEPARTURE ..... BEARING ..... ULTIMATE DEPTH .....

ELEVATION ..... SP ..... PROPOSED DEPTH .....

DEPTH FEET	FORMATION	SAMPLE NO.	FROM	TO	WIDTH	ASSAY VALUES	
249-267	M.I.F. Fe 30% BANDING AT 60'	H-4	249	260	11'	15.88	
		H-5	260	267	7'	22.50	
267-326	M.I.F. INTERBEDDED WITH	H-6	267	280	13'	11.73	
	BARREN GULKE. EST. Fe 10	H-7	280	290	10'	12.69	
	MAGNETITE 15% BANDING	H-8	290	300	10'	8.62	
	AT 60° TO COE	H-9	300	310	10'	9.58	
		H-10	310	320	10'	7.98	
		H-11	320	326	6'	8.30	
326-413	DIASPORITIC MAGNETITE	H-12	326	340	14'	30.17	
	IRON FORMATION. BANDING	H-13	340	350	10'	34.21	
	60-75°. 2 <sup>nd</sup> BARREN 383.5	H-14	350	360	10'	38.69	
		H-15	360	370	10'	36.41	
		H-16	370	380	10'	35.17	
		H-17	380	390	10'	35.17	

# DIAMOND DRILL RECORD

PROPERTY *LAUFER MINES LTD. CENTRAL DURNAN RAIDS* HOLE NO. *B-4*

SHEET NUMBER *4* SECTION FROM \_\_\_\_\_ TO \_\_\_\_\_ STARTED *SEPT 23/58*

LATITUDE \_\_\_\_\_ DATUM \_\_\_\_\_ COMPLETED *SEPT 29/58*

DEPARTURE \_\_\_\_\_ BEARING \_\_\_\_\_ ULTIMATE DEPTH *520'*

ELEVATION \_\_\_\_\_ DIP \_\_\_\_\_ PROPOSED DEPTH \_\_\_\_\_

DEPTH FEET	FORMATION	SAMPLE NO.	FROM	TO	WIDTH	ASSAY VALUES	
413-423	<i>SHALEY GREY-GREEN SLATE</i>	H-19	400	413	13'	26.46	
413-450	<i>LOW GRADE M.I.F. EST 15%</i>	H-18	390	400	10'	35.57	
	<i>FE. GRADING AT 70°</i>	H-21	430	440	10'	25.50	
		H-22	440	450	10'	22.14	
450-460	<i>GREY-BLACK SLATE. OCCASIONAL</i>						
	<i>SEAMS OF MASSETTITE</i>						
460-520	<i>GREY SLATE SLATE.</i>						
	<i>FRANKING AT 70° TO CORE</i>						
	<i>520' TO TOP OF HOLE</i>						
	<i>2 1/2" TO 3" DIA.</i>						

# DIAMOND DRILL RECORD

PROPERTY **CAN-FER MINES LTD., CENTRAL ONKAM RANGE**

HOLE No. **B-6**

SHEET NUMBER **1** SECTION FROM **1** TO **1** STARTED **Oct. 9, 1958**

LATITUDE **11400N** LONGITUDE **5900W** DATE **1958** COMPLETED **Oct. 19, 1958**

DEPARTURE **8400E** BEARING **Due South** ULTIMATE DEPTH **425'**

ELEVATION **8400E** DIP **-16 Degrees** PROCESS DEPTH **425'**

DEPTH FEET	FORMATION	SAMPLE NO.	FROM	TO	WIDTH	ASSAY VALUES	
						Fe	
0-96	Overburden						
96-107	Argillaceous greywacke. Banding at 60 to 62 degrees to core.						
107-114	Greywacke (chloritic) interbanded with narrow layers of magnetite iron formation.	J-1	107	115	8'		
		J-2	115	124	9'		
124-132	Banded magnetite iron formation narrow bands chloritic greywacke Banding at 62 degrees.	J-3	124	132	8'		
132-149	Linedated micaceous diorite, accessory pyrrhotite.						
149-174	Accessory magnetite iron formation	J-4	149	160	12'		

Canadian Drilling Co. R. Mc Cleary

# DIAMOND DRILL RECORD

PROPERTY **CAN-FER MINES LTD. CENTRAL OMAHA RANGE**

HOLE No. **B-6**

SHEET NUMBER **2**

SECTION FROM **TO**

STARTED

LATITUDE **DATUM**

COMPLETED **Oct. 19, 1959**

DEPARTURE **READING**

ULTIMATE DEPTH **425'**

ELEVATION **BM**

PROPOSED DEPTH

DEPTH FEET	FORMATION	SAMPLE NO.	FROM	TO	WIDTH	ASSAY VALUES	
						To	
168-200	Frequent narrow bands of stromatolite						
200	Abundant Jasper	J-7	180	190	10'		
234	Disintegrating	J-8	190	200	10'		
249	" "	J-9	200	210	10'		
258	" "	J-10	210	220	10'		
280-295	Frequent narrow bands of barren iron formation.	J-11	220	230	10'		
		J-12	230	240	10'		
	<b>Core-Bedding Angles 160' Sided</b>	J-13	240	250	10'		
	180'-50 degrees	J-14	250	260	10'		
	194'-50 " "	J-15	260	270	10'		
	220'-60 " "	J-16	270	280	10'		
	240'-65 " "	J-17	280	295	10'		
	280'-60 " "	J-18	295	300	10'		

# DIAMOND DRILL RECORD

PROPERTY **CAN-FTR MINES LTD. CENTRAL GRANAR RANGE** HOLE No. **B-6**

SHEET NUMBER **5** SECTION FROM **TO** STARTED **COMPLETED**

LATITUDE **DATUM** **COMPLETED**

DEPARTURE **BLANKED** **ULTIMATE DEPTH**

ELEVATION **SW** **PROPOSED DEPTH**

DEPTH FEET	FORMATION	SAMPLE NO.	FROM	TO	WIDTH	ASSAY VALUES			
	265'-60 degrees	J-20	310	320	10'				
		J-21	320	330	10'				
		J-22	330	337	7'				
		J-23	337	350	13'				
	Lean magnetite iron formation non Jeppillite.	J-24	350	360	10'				
		J-25	360	369	9'				
	369-425 Medium grained altered greywacke								
	Calcite stringers containing	J-26	382	395	13'				
	anorthite, epidote, chlorite	J-27	409	415	6'				
	seen to be somewhat associated								
	with narrow iron rich zones								
	with the greywacke.								

The above data was obtained from the log of the hole and is subject to change.

# DIAMOND DRILL RECORD

20184

PROPERTY **CAN-FR LINES LTD. GENERAL OREMIN RANGE**

HOLE No. **B-7**

SHEET NUMBER **1** SECTION FROM **TO** STARTED **Oct. 22, 1958**

LATITUDE **10400E** LONGITUDE **58 W** DATUM **DAVIS** COMPLETED **Oct. 27, 1958**

DEPARTURE **1640E** BEARING **Due South** ULTIMATE DEPTH **297'**

ELEVATION **DP -45 Degrees** PROPOSED DEPTH **300'**

DEPTH FEET	FORMATION	SAMPLE NO.	FROM	TO	WIDTH	ASSAY VALUES	
						Fe	
0-85	Overburden						
85-121	Coarse grained greywacke. In places shistose. Bedding 55°						
121-174	Fine grained greywacke with narrow bands I.F. at frequent intervals						
	Fe less than 5% ext. Banding 60°						
174-220	Magnetite iron formation, non jaspillitic. Banding c 70°	K-1	174	180	4'		
		K-2	180	190	10'		
		K-3	190	200	10'		
		K-4	200	210	10'		
		K-5	210	220	10'		
220-237	Jaspillitic magnetite iron formation	K-6	220	230	10'		

240 250





# DIAMOND DRILL RECORD

8-1-252

1989

PROPERTY **GULF-PER KINGS LTD. CENTRAL OREVALS BARRE**

HOLE No. **3-8**  
Oct. 29th, 1988

SHEET NUMBER **1** SECTION FROM **1** TO **1** STARTED **1987.158, 1988**

LATITUDE **6400N** **54+50. N** ALTITUDE **200'**

LONGITUDE **394000E** **394000** **200'**

ELEVATION **90-81°, 90-44°, 200'-80'** PROPOSED DEPTH

DEPTH FEET	FORMATION	SAMPLE NO.	FROM	TO	WIDTH	IN	AGRAY VALUES
0-80'	Overburden						
80-94'	Altered light grey gneiss Banding at 80' to core						
94-121	Altered Iron Formation, Barrow	L-1	95	100	5'		
	rich seams of magnetite associated with quartz veins and	L-2	100	110	10'		
	abundant alteration, secondary sulfides.	L-3	110	120	10'		
		L-4	120	130	10'		
		L-5	130	140	10'		
		L-6	140	150	10'		
		L-7	150	160	10'		
		L-8	160	170	10'		
		L-9	170	180	10'		
		L-10	180	190	10'		
		L-11	190	195	5'		



Bearings: Due South

PROPERTY: CAN-FER MINES LIMITED - CENTRAL OULAH RANGE

Hole No. B-9

Dip:  $0^{\circ}49'$ ,  $200^{\circ}40'$ ,  $590^{\circ}37.5'$

Sheet No. 1

Started: November 3, 1958 Completed: Nov. 9, 1958.

Date	Foot Drilled	Total Depth	Section		Remarks (log)
			To	Foot	
Assay Values: Fe			0	191	Overburden
Sample No.	From	To			
M-1	19	60	19	190	In an magnetic iron formation with accessory sulfides. Bending at $15^{\circ}$ to core.
M-2	60	70			
M-3	70	80			
M-4	80	90			
M-5	90	100			
M-6	100	110			
M-7	110	120			
M-8	120	130			
M-9	130	140			
M-10	140	150			
M-11	150	160			
M-12	160	170			
M-13	170	180			
M-14	180	190			

MANAGED DRILLING CO. LTD.

Engineer in Charge

PROPERTY CAN-FER MINES LIMITED - CENTRAL CRACK RANGES

Hole No. B-9

Sheet No. 2

ASSAY VALUES: Fe

Date Sample No.	Feet Drilled From To	Total Depth	Section		Feet	Remarks (Log)
			From	To		
M-15	190 200		190	-	200	Massive hematite iron formation. Post ore brecciation at bottom @ 55'
M-16	200 210					
M-17	210 220					
M-18	220 230					
M-19	230 240					
M-20	240 250					
M-21	250 260					
M-22	260 270					
M-23	270 280					
M-24	280 290					
M-25	290 300					
M-26	300 310					
M-27	310 320		310	-	317	Massive iron formation. grading into altered zone.
M-28	320 330					
M-29	330 340					
M-30	340 350					

PROPERTY CAN-FER MINES LIMITED - CENTRAL CRACK RANGES

Engineer in Charge

PROPERTY CAN-FEE PINES LIMITED - CENTRAL GRAYW RANGE

Hole No. B-9

Sheet No. 3

Date	Sample No.	Feet Drilled	Total Depth	Section		Remarks (Feet)
				From	To	
		From	To			
	M-31	350	360	347	365	Jaspillitic magnetite to Iron formation
	M-32	360	370			
	M-33	370	380	365	387	Altered magnetite to Iron formation with chlorite and small pyrite abundant, accessory sulfides. Bounding at 60°
	M-34	380	390			
	M-35	390	400			
	M-36	400	410			
	M-37	410	420			
	M-38	420	430			
	M-39	430	440			
	M-40	440	450			
	M-41	450	460			
	M-51L	460	470			
	M-55	470	480			
	M-42	480	490			
	M-43	490	500	487	500	Jaspillitic magnetite to Iron formation

Engineer in Charge

PROPERTY CAMPER MINES LIMITED - CENTRAL ORE/W. BUREAU

Hole No. B-9  
 Sheet No. 1

Assay Values: Fe

Date	Foot Drilled	Total Depth	Section		Feet	Remarks (Feet)
			From	To		
Sample No.	From	To				
K-44	500	510				
K-45	510	520	500		599	Lean magnetite iron formation
K-46	520	530				containing garnets and accessory minerals
K-47	530	540				
K-48	540	550				
K-49	550	560				
K-50	560	570				
K-51	570	580				
K-52	580	590				
K-53	590	599			599	Bottom of hole

Drilled by: Cameron Diamond Drilling Co. Ltd

Engineer in Charge

Bearing:  $100^{\circ}$  South

Dip:  $0^{\circ}15'$ ,  $250^{\circ}30'$ ,  $500^{\circ}33'$

PROPERTY CAM-PER MINES LIMITED - CENTRAL QUARRY RANGE

Roll No. B-10

Ultimate Depth: 518'

Started: Nov. 11, 1958. Completed: Nov. 18, 1958.

Sheet No. 1

Date	Feet Drilled	Total Depth	Section		Remarks (Log)
			From	To	
Start	From	To			Orientation
N-1	51	60 - 9	51	-	Drilled near N 10 from location, bearing $52^{\circ}$ at 80'
N-2	60	70 - 10			Drilled N 10 at 120'
N-3	70	80 - 10			
N-4	80	90 - 10			
N-5	90	100 - 10			
N-6	100	110 - 10			
N-7	110	120 - 10			
N-8	120	130 - 10			
N-9	130	140 - 10			
N-10	140	150 - 10			
N-11	150	160 - 10			
N-12	160	170 - 10			
N-13	170	180 - 10			
Asses	Value	To			



PROPERTY CAR-TER MINES LTD., CENTRAL OILMAN RANGE

Bole No. B-16

Sheet No. 2

Date	Foot Drilled	Total Depth	Section		Feet	Remarks (Feet)
			From	To		
Sample Test	To	Depth	180	-	252	Section with occasional pieces of magnetite.
N-14	180	190	10'			
N-15	190	200	10'			
N-16	200	210	10'			
N-17	210	220	10'			
N-18	252	260	8'		252	Banded magnetite from formation trending 18° at 253', 50° at 300'
N-19	260	270	10'			
N-20	270	280	10'			
N-21	280	290	10'			
N-22	290	300	10'			
N-23	300	310	10'			
N-24	310	320	10'			
N-25	320	330	10'			
N-26	330	334	10'		334	Artificially expanded, heading 55° at 300'

Drilled by: Easton Diamond Drilling Co. Ltd.

Engineer in Charge



Bearing: 10 South

Dip: 01-55°, 3001-47°, 6001-44°

PROPERTY CAR-FER MINES LTD. - CENTRAL GUYANA BASIN

Bole No. B-11

UTM coordinates: 6221

Started: Nov. 19, 1958

Completed: Dec. 1, 1958.

Sheet No. 1

Data Sample No.	Depth From	Total Depth	Section		Remarks (See)
			From	To	
0-1	211	240	0	70	Overburden. Sandy, with gravel bed from 24 to 47 feet.
0-2	240	250			
0-3	250	260	70	211	Altered, banded. Fine to medium grained granitic. Considerable white along laminae. Also porphyritic. In part amphibole. chloritic or sericitic. Chlorination increases with depth.
0-4	260	270			
0-5	270	280			
0-6	280	290			along with size and frequency of crystals. 35° & 96°.
0-7	290	300			45° & 120°.
0-8	300	310			
0-9	310	320			
0-10	320	330			
0-11	330	340	211	160	Partial section to 211. Section from 160 to 211.
0-12	340	350			
0-13	350	360			
0-14	360	370			
0-15	370	380			

Drilled by Cameron Diamond Drilling Co., Ltd.

Engineer in Charge

PROPERTY CAN-FER MINES LTD., CENTRAL OUNALE RANGE

Hole No. B-11

Sheet No. 2

Assay Values: Fe

Date	Sample No.	Feet Drilled	Total Depth	Section		Feet	Remarks (Feet)
				From	To		
0-16	300	300	300				
0-17	390	390	390				
0-18	600	600	600				
0-19	610	610	610				
0-20	1120	1120	1120				
0-21	1130	1130	1110				
0-22	1110	1110	1150				
0-23	1150	1150	1160	1150	-	1160	Between Iron formation
0-24	1180	1180	1190	1180	-	1190	Divided material to Iron formation. Sampling 15' to 20' @ 500'
0-25	1190	1190	500				
0-26	500	500	510				
0-27	510	510	520				
0-28	520	520	530				
0-29	530	530	510				
0-30	510	510	550				

Drilled by Diamond Drilling Co., Ltd.

Engineer in Charge



Report No. 16000 E

Bearing: Due South

Dip: 01-45°

Ultimate Depth: 627'

PROPERTY: CAM-PEP MINES LTD., CENTRAL CANADA DIVISION

Hole No. P-12

Sheet No. 1

Started: Dec. 4, 1958 Completed: Dec. 11, 1958

Sample No.	Foot Drilled	Total Depth	Section		Remarks (Feet)
			From	To	
P-1	11	50	0	11	Overburden
P-2	50	60	11	116	Banded magnetite iron formation. Minor layers, trending at 95° to NW core
P-3	60	70			
P-4	70	80			
P-5	80	90			
P-6	90	100			
P-7	100	110			
			110	179	Thin bedded magnetite iron formation. Chlorite, garnet, quartz iron with occasional small orthopyroxene.
			179	219	Black fine grained structure.
			219	296	Thin bedded structure interbedded with thin bedded quartz sand and iron formation containing abundant chlorite. Alter- ation associated by quartz and minor small orthopyroxene. Alter- ation. Banded at 51° 0' 23' 21".
			296	591	Medium to fine grained structure associated by quartz-chlorite

Drilled by Cameron Diamond Drilling Ltd.

Thob. H. McCusker, Engineer in Charge



Location: 01-45, 2001-42, 4001-41.

PROPERTY CAM-TER MINES LIMITED - CENTRAL OMAHA RANGE

Bole No. B-13

Sheet No. 1

Ultimate Depth: 442'

Started: Jan. 10, 1959. Completed: Jan. 16, 1959.

Sample No.	Foot Drilled	Total Depth	Section		Remarks (Loss)
			From	To	
0-1	145	160	0	63	Concretion (green sand-gravel)
0-2	160	170	63	110	Concretion
0-3	170	180	140	145	Very lean banded iron formation.
0-4	180	190	145	400	Banded magnetite iron formation. Several Mn in part. Chlorite in part. Garnet, chlorite alteration 280-425. Another 50' @ 175', 45' @ 200', 45-50' @ 300', 15' @ 370', 65' @ 400'.
0-5	190	200			
0-6	200	210			
0-7	210	220			
0-8	220	230			
0-9	230	240			
0-10	240	250			
0-11	250	260			
0-12	260	270			
0-13	270	280			
0-14	280	290			
0-15	290	300			

Drilled by Cameron Diamond Drilling Co. Ltd.

Robert D. R. McChesney  
Engineer in Charge





Departure: ( 6400 E

Bearing: Due South

Dip: 0'-45°, 200'-44°

PROPERTY CAM-PER MINES LIMITED - CENTRAL OYSTER RANGE

Hole No. B-11

Started: Jan. 17, 1959. Completed: Jan. 19, 1959.

Sheet No. 1

Ultimate Depth: 247'

Sample No	Feet Drilled	Total Depth	Section		Remarks (Feet)
			From	To	
B-1	27	10	0	27	Overburden
B-2	10	50	27	155	Banded magnetite iron formation, chlorite, 125-150
B-3	50	60			Banding 55° - 60°, 45° - 114°
B-4	60	70			
B-5	70	80			
B-6	80	90			
B-7	90	100	155	180	Very thin magnetite iron formation
B-8	100	110			
B-9	110	120	180	247	Altered zone
B-10	120	130			
B-11	130	140		247	Bottom of hole
B-12	140	150			
B-13	150	160			

Drilled by Cameron Diamond Drilling Co. Ltd.

Robert D. R. McCasney  
Engineer in Charge

Departure: 161000 E

Bearing: Due South

Dip: 01-45°, 2501-47°, 5001-42°

Ultimate Depth: 5161

Started: Jan. 21, 1959

Completed: Jan. 26, 1959

PROPERTY CAN-FER MINES LTD., CENTRAL ONDAGA RANGE

Sheet No. B-15

Sheet No. 1

Date	Feet Drilled	Total Depth	Section		Remarks (Feet)
			From	To	
S-1	184	190	0	51	Ordinaries
S-2	190	200	35	184	Ordinaries, Banding 55° & 60°
S-3	200	210	184	521	Banded magnetite iron formation. Locally magnetized to 710°
S-4	210	220			Genet. chlorite phst interbeds commencing at 710°. Banding
S-5	220	230			60° at 280', 50° at 100' and 65° at 510'
S-6	230	240			
S-7	240	250			
S-8	250	260			
S-9	260	270			
S-10	270	280			
S-11	280	290			
S-12	290	300			
S-13	300	310			
S-14	310	320			
S-15	320	330			

Drilled by Cameron Diamond Drilling Co., Ltd.

By Mr. D. S. McQuinn  
Engineer in Charge

PROPERTY CAMP-FER : IRES LTD. - CENTRAL OMAHA RANGE

Bole No. B-15

Sheet No. 2

Date	Sample No.	Feet Drilled	Total Depth	Section		Feet	Penetration (Feet)
				From	To		
	S-16	330	340				
	S-17	340	350				
	S-18	350	360				
	S-19	360	370				
	S-20	370	380				
	S-21	380	390				
	S-22	390	400				
	S-23	400	410				
	S-24	410	420				
	S-25	420	430				
	S-26	430	440				
	S-27	440	450				
	S-28	450	460				
	S-29	460	470				
	S-30	470	480				

Drilled by Cameron Drilling Co. Ltd.

W. H. S. McCann  
Engineer in Charge



Bearings: ( a South  
 Dip: 01-45°, 2501-40°, 5001-37½°

PROPERTY CAN-FER METALS LIMITED - CENTRAL ONARAN RANGE

Hole No. B-16  
 Sheet No. 1

Ultimate Depth: 5591 Started: Jan. 15, 1959. Completed: Jan. 22, 1959.

Date	Sample No.	Foot Drilled		Section		Remarks (Log)
		From	To	From	To	
T-1	78	78	90	0	-	Overburden
T-2	90	90	100	78	-	Banded magnetite from formation containing garnet, chlorite
T-3	100	100	110			alteration and minor sulfides. Twenty samples 111 to 212, 300,
T-4	110	110	120			125-115. Bending 50° at 951, 60° at 1101, 55° at 2201, 15° at
T-5	120	120	130			3001, 360, 420, 450. Irregular borehole 460-531.
T-6	130	130	140			
T-7	140	140	150			
T-8	150	150	160			
T-9	160	160	170			
T-10	170	170	180			
T-11	180	180	190			
T-12	190	190	200			
T-13	200	200	210			
T-14	210	210	220			
T-15	220	220	230			

Drilled by Cameron Diamond Drilling Co. Ltd.

W.A.C. Engineers Ltd. Charge

PROPERTY CAN-FER MINES LIMITED, CENTRAL OYANAK RIVER

Hole No. B-11  
 Sheet No. 2

Date	Sample No.	Feet Drilled	Total Depth	Section		Remarks (Use)
				From	To	
T-16	230	230	240			
T-17	240	250	250			
T-18	250	260	260			
T-19	260	270	270			
T-20	270	280	280			
T-21	280	290	290			
T-22	290	300	300			
T-23	300	310	310			
T-24	310	320	320			
T-25	320	330	330			
T-26	330	340	340			
T-27	340	350	350			
T-28	350	360	360			
T-29	360	370	370			
T-30	370	380	380			

Checked by OSCAR W. DE WIT 05/1/54

W. H. B. ...  
 ...





Departure: N/600 E

Bearing: true South

Dip: 01-15°, 2501-38°, 5001-37°

Ultimate Depth: 513'

Started: January 24, 1959 Completed: January 30, 1959

Sheet No. 1

PROPERTY CAN-FER MINES LIMITED - CENTRAL OREMAN RANGE

Hole No. B-17

Sample No.	Foot Drilled	Total Depth	Section		Remarks (Feet)
			From	To	
U-1	91	100	0	91	Overburden
U-2	100	110	91	97	Banded magnetite iron formation. Garnet. chlorite alteration in barren interbeds. Jesenly lamellite at 110'. Banding 55° at 160', 60° at 210', 50° at 300' and 55° at 310'.
U-3	110	120			
U-4	120	130			
U-5	130	140			
U-6	140	150			
U-7	150	160			
U-8	160	170			
U-9	170	180			
U-10	180	190			
U-11	190	200			
U-12	200	210			
U-13	210	220			
U-14	220	230			
U-15	230	240			

Drilled by Cameron Diamond Drilling Co. Ltd.

Walter D. S. McCrossin  
Geologist in Charge

PROPERTY CAN-YER MINES LIMITED - CENTRAL COPPER RANGE

Hole No. B-17

Sheet No. 2

Date	Sample No.	Feet Drilled	Total Depth	Section		Remarks (Feet)
				From	To	
	U-16	250	250			
	U-17	250	250			
	U-18	260	270			
	U-19	270	280			
	U-20	280	290			
	U-21	290	300			
	U-22	300	310			
	U-23	310	320			
	U-24	320	330			
	U-25	330	340			
	U-26	340	350			
	U-27	350	360			
	U-28	360	370			
	U-29	370	380			
	U-30	380	390			

Drilled by Cameron Drilling Co., Ltd.

1934





# DIAMOND DRILL RECORD

PROPERTY CAL-SEA MINES LIMITED CENTRAL OMANAL DISTRICT HOLE No. 4-1

DATE 2 MONTH 10 YEAR 1958

DEPTH 10 FEET

DIAMETER 1 1/2 INCHES

REMARKS INTERESTED PART

DEPTH	REMARKS	DIAMETER	TEMPERATURE	WATER	ROCK	GRAIN	SPALL	REMARKS
0-1	INTERESTED PART	100						
1-9	THE SOLE OF THE CORE IS FLATTER	310						
7-10	150' SERIES THAN HAS BEEN THE	380						
	same in most of the sections below	390						
7-12		240						
7-13		340						
7-14		360						
7-15		370						
7-16		380						
7-17		290						
7-18		400						
410-437	TAPEID banded iron formation inter- bedded with very altered grey- green							
	437' Bottom of hole							

Prepared by Central Diamond Drilling Co. Ltd. Date 10/2/58

*Handwritten signature*

# DIAMOND DRILL RECORD

PROPERTY AMERICAN MINING COMPANY HOLE NO. 1001

SECTION NO. 1 TO 1 STARTED 10-15-1959

LATITUDE 6000S SATUR 1001-1001 COMPUTED 10-15-1959

DEPARTURE 106400E BEARING Due South ULTIMATE DEPTH 700'

ELEVATION 808-450, 8001-400, 4601-7 PROPOSED DEPTH 700'

DEPTH FEET	FORMATION	SAMPLE NO.	FROM	TO	WIDTH	ASSAY VALUES			
0-10	Overburden								
10-145	Barren red to fine grained conglomerate with nodules to quartz alteration.	N-1	145	160					
		N-2	160	170					
		N-3	170	180					
		N-4	180	190					
145-160	bedded conglomerate from formation transition to 200' then grading into non stratified bedded formation with minor chlorite alteration. Some heavy alteration. 200-240 generally smooth to irregular.	N-5	190	200					
		N-6	200	210					
		N-7	210	220					
		N-8	220	230					
		N-9	230	240					
		N-10	240	250					
		N-11	250	260					
		N-12	260	270					

1001-1001

10/19









# DIAMOND DRILL RECORD

18209

PROPERTY **AM-STR MINES LIMITED** DISTRICT **GRAND DUNE** HOLE NO. **D-11**

SHEET NUMBER **1** SECTION FROM **1** TO **1** STARTED **April 7, 1959**

LATITUDE **1403** LONGITUDE **7901** COMPLETED **April 16, 1959**

DEPT. NAME **66-002** BLANKS **Two South** INITIAL DEPTH **792'**

REVISION **NO 01-45', 500'-45', 790'-45'** PROPOSED DEPTH

DEPTH FEET	FORMATION	SAMPLE NO.	FROM	TO	WIDTH	ASSAY VALUES			
0-55	Overburden								
55-151	Granulitic gneiss with narrow contact zone in contact with quartzite also visible in some parts. From 2 to 10% and occasional visible amphibole.								
151-200	Dark massive iron formation associated with quartz, siliceous alteration matrix between layers of gneiss.								
200-465	Gneiss containing thin bands of massive iron formation.								
465-650	Dotted massive iron formation with chlorite alteration common								

# DIAMOND DRILL RECORD

PROPERTY **GARDNER MINES LIMITED** GENERAL QUARRY BASE HOLE NO. **D-21**

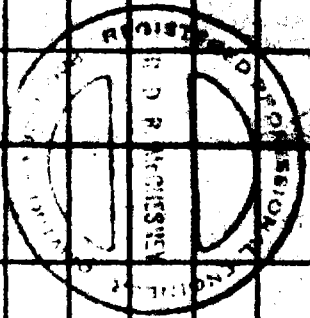
SHEET NUMBER **2** SECTION FROM \_\_\_\_\_ TO \_\_\_\_\_ STATES \_\_\_\_\_

LATITUDE \_\_\_\_\_ DAYTIME \_\_\_\_\_ COMMENTS \_\_\_\_\_

DEPTH FEET \_\_\_\_\_ REMARKS \_\_\_\_\_ ALTITUDE SURVEY \_\_\_\_\_

ELEVATION \_\_\_\_\_ BY \_\_\_\_\_ RECORD SURVEY \_\_\_\_\_

DEPTH FEET	FORMATION	SAMPLE NO.	FROM	TO	WIDTH	ASSAY VALUES
	The Iron formation gradually					
	changes becoming jaspery at					
	about 250. The jasper is common					
	to 640'.					
650-702	Conglomerate containing very thin					
	bands of Iron formation at 650-					
	660' is a few feet thick.					
	MINING 45' @ 1250' 200-240'					
	60' @ 490'					
	65' @ 1250, 200, 250, 400'					
	Irregular 850-640'.					
702	Bottom of hole.					



# DIAMOND DRILL RECORD

20145  
6-7-220  
MAY 1959

PROPERTY **SA-772 MINE SITE** HOLE NO. **2-32**

DATE **APRIL 1959** SECTION FROM **TO** STARTED **APRIL 19th, 1959**

MINER **WAGNER** DATA **APRIL 19th, 1959** COMPLETED **APRIL 19th, 1959**

SPAN **125-130** BEARING **Due South** ULTIMATE DEPTH **850'**

REMARKS **Dr 0'-72" 400'-60" 240'-67"** RECORDED DEPTH

DEPTH FEET	FORMATION	SAMPLE NO.	FROM	TO	WIDTH	ASSAY VALUES									
0-50	Granite														
50-501	Highly metamorphosed green exsolving rock, numerous quartz stringers. Probably granitoid, igneous.														
501-507	Block scallite with interlayers of high silica cement and occasional masses of granitoid. Pyrite stringers 2 to 10% and in places (502-505, 402-407) somewhat fine to 40% of the rock, silver pyritic and occasional masses of chalcocite and also present small faults														
	slip in present at 444'. Pyrite also present somewhat more prevalent														

BOSTONIAN MARKET FROM 505 REV 7/54



8-3-223

# DIAMOND DRILL RECORD

PROPERTY CAN-PER MINES LTD. Jeffries Zone Central Diamondhole No. B-23

SHEET NUMBER 1 SECTION FROM 1 TO 1 STARTED Nov. 20, 1960

LATITUDE 4290N DATUM North COMPLETED Nov. 29

DEPARTURE 7600 E BEARING North ULTIMATE DEPTH 599'

ELEVATION 1077.56' DPO 45°, 120-44°, 350-37 1/2°, 595-29 1/2° Proposed depth

DEPTH FEET	FORMATION	SAMPLE NO.	FROM	TO	WIDTH	ASSAY VALUES	
						%A/S Fe	%Mg Fe.
0-118	Casing						
118-133	Altered garnetiferous greywacke						
133-534	Garnetiferous Magnetite Iron Formation.						
	Bands at 43° to core.		133	140		17.1	9.2
			140	150		18.9	5.6
			150	160		13.8	3.6
	Bands at 48° to core.		160	170		19.9	9.4
			170	180		12.4	2.9
			180	190		16.7	8.3
	Bands at 50° to core.		190	200		14.7	3.7
			200	210		19.5	8.2
			210	220		17.5	9.5
	Bands at 56° to core.		220	230		24.2	16.9
			230	240		19.9	9.5
			240	250		17.7	9.7
	Bands at 44° to core.		250	260		27.0	22.4
			260	270		22.2	14.3
			270	280		21.2	14.2
	Bands at 50° to core.		280	290		23.0	15.8
			290	300		21.8	14.9
			300	310		23.4	27.2

NORTHERN MINER FORM 505 REV./65

DRILLED BY Cameron Drilling Co.

SIGNED

# DIAMOND DRILL RECORD

PROPERTY Can-Fer Mines Ltd. HOLE No. B-23

SHEET NUMBER 2 SECTION FROM            TO            STARTED            COMPLETED           

LATITUDE            DATUM            DEPARTURE            BEARING            ULTIMATE DEPTH           

ELEVATION            DIP            PROPOSED DEPTH           

DEPTH FEET	FORMATION	SAMPLE NO.	FROM	TO	WIDTH	ASSAY VALUES	
						A/S % Fe	TA/G % Fe
	Bands at 47° to core.		310	320		22.5	14.7
			320	330		18.1	10.0
			330	340		17.9	7.9
	Bands at 59° to core.		340	350		26.1	19.3
			350	360		19.8	9.7
			360	370		21.8	10.8
	Bands at 53° to core.		370	380		20.1	8.1
			380	390		18.7	9.7
			390	400		21.2	12.1
			400	410		20.5	9.7
	Bands at 57° to core.		410	420		20.8	10.8
			420	430		28.7	22.6
			430	440		22.3	15.2
	Bands at 55° to core.		440	450		33.1	29.4
			450	460		29.8	25.2
			460	470		25.6	17.7
	Bands at 59° to core.		470	480		29.8	24.8
			480	490		26.8	19.2
			490	500		24.7	15.9
	b ands at 55° to core		500	510		20.8	11.6
			510	520		21.5	11.3
534 - 539	Garnetiferous Altered Greywacke.		520	530		26.2	17.2

NORTHERN MINER FORM 808 REV/84

DRILLED BY            SIGNED *[Signature]*













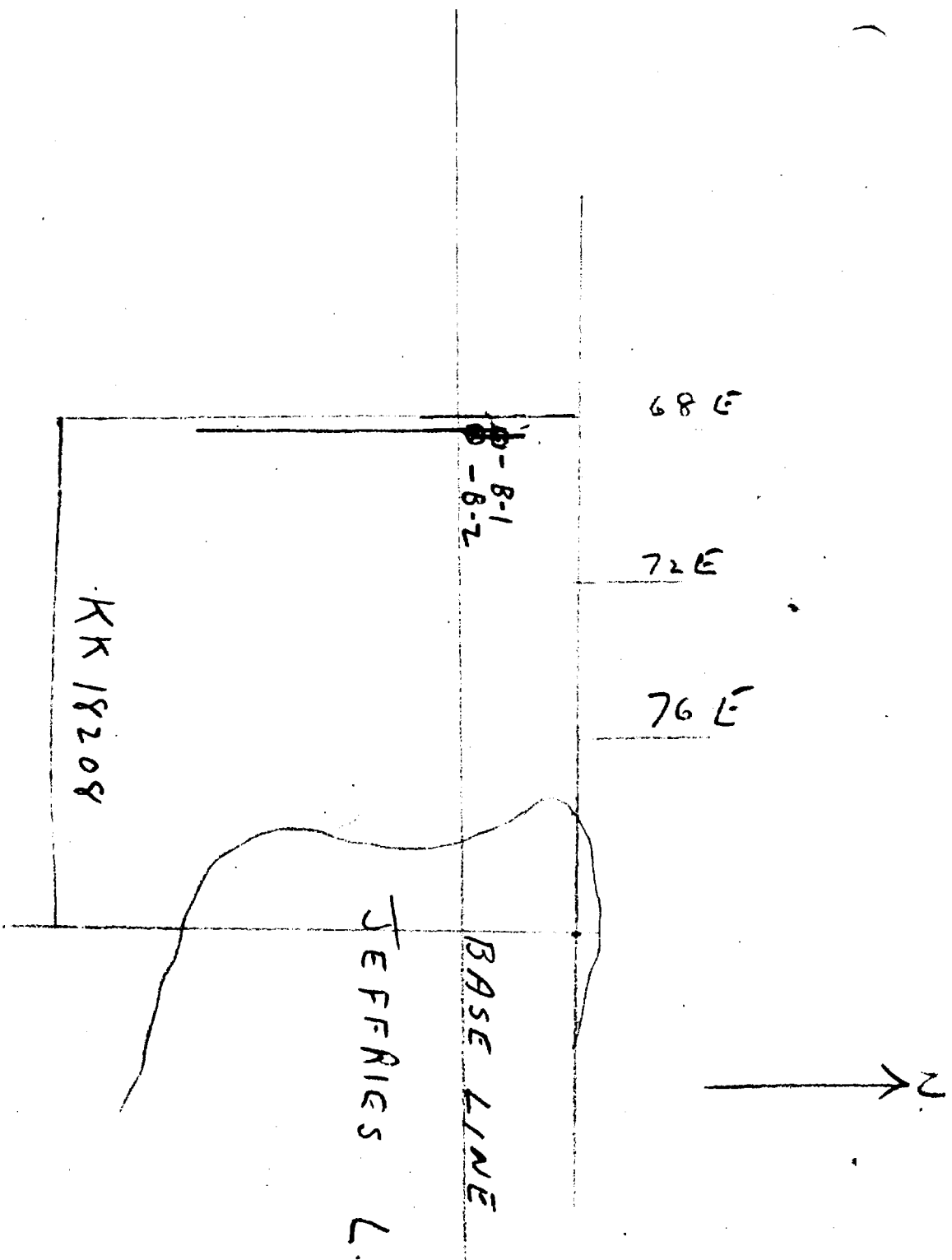




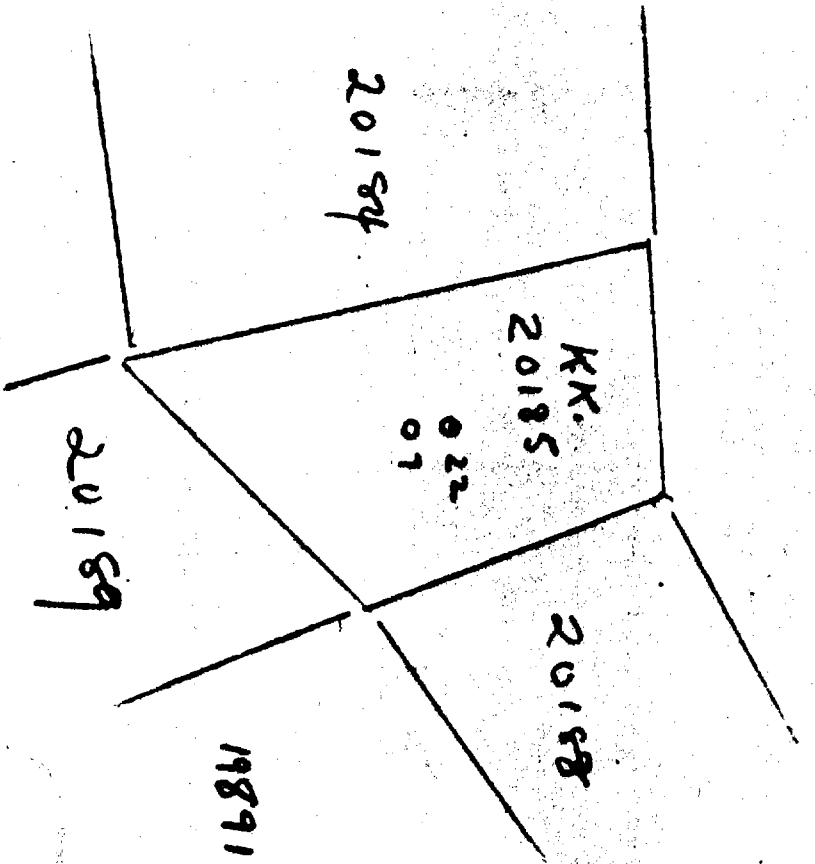








WTC Green  
 Sept 22. 1958  
 1" = 400'

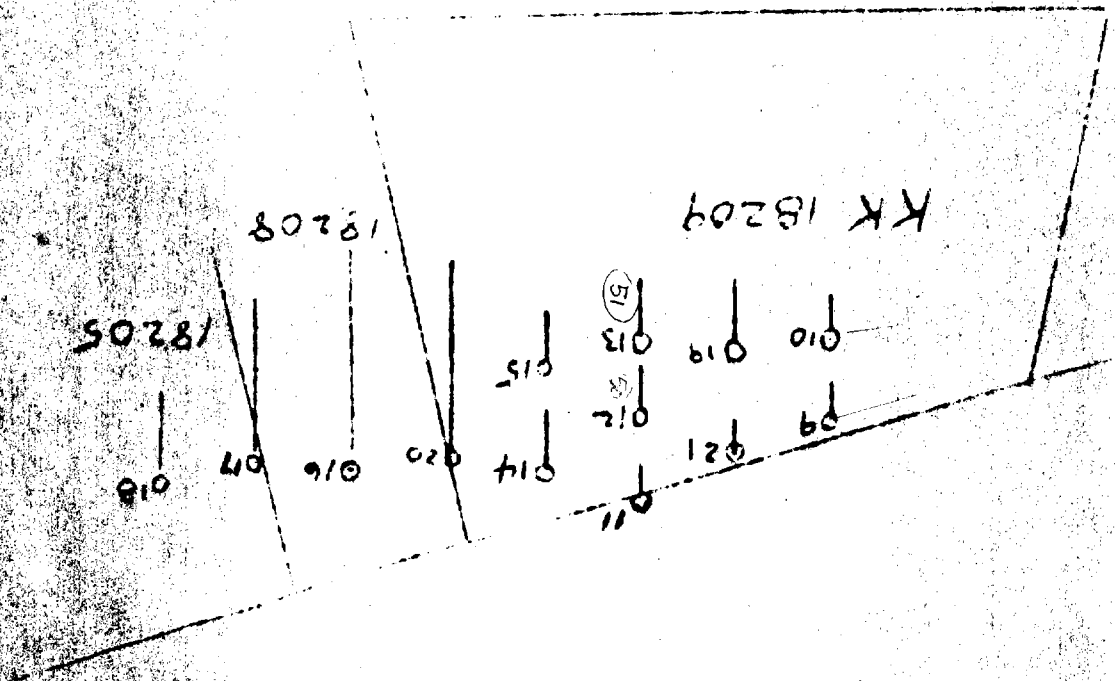


Can - For Mini Be!

July 27-1959

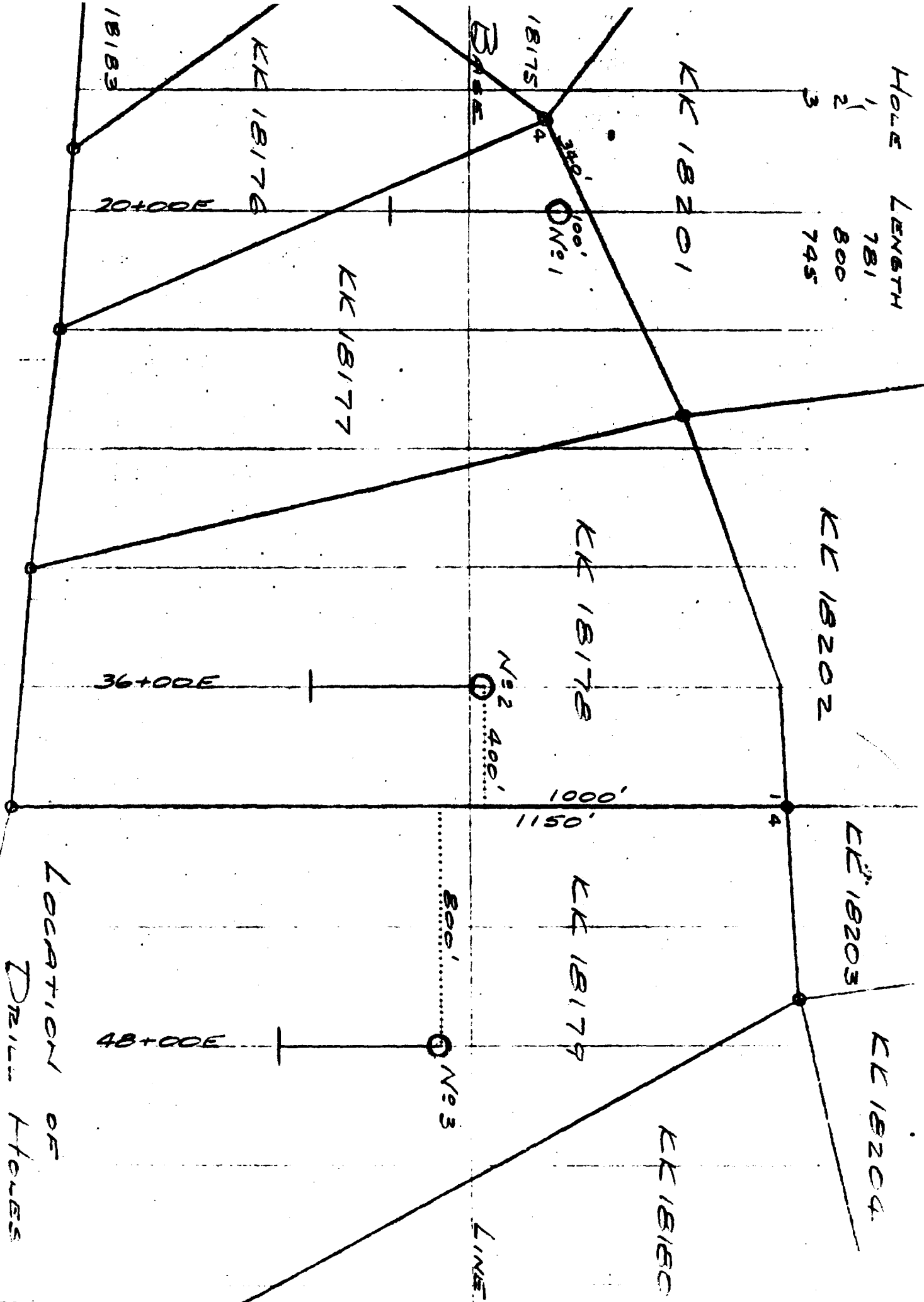
1" = 100 FT.  
 W.R. Green

Can - For Mrs. Lee,  
July 27 - 1959  
WTC Green  
1" = 300 FT



↓  
2

HOLE	LENGTH
1	781
2	800
3	745



LOCATION OF  
DRILL HOLES

# PASKA SUNI

DISTRICT OF THUNDER BAY

KOWKASH MINING DIVISION

SCALE: 1-INCH 40 CHAINS

### LEGEND

- PATENTED LAND Ⓟ
- CROWN LAND SALE C.S.
- LEASES Ⓛ
- LOCATED LAND Loc
- LICENSE OF OCCUPATION L.O.
- MINING RIGHTS ONLY MRO
- SURFACE RIGHTS ONLY SRO
- ROADS —
- IMPROVED ROADS —
- KING'S HIGHWAYS —
- RAILWAYS —
- POWER LINES —
- MARSH OR MUSKOG —
- MINES —
- CANCELLED —

### NOTES

400' surface rights reservation around all lakes and rivers.

SURFACE RIGHTS WITHDRAWN FROM STAKING SALE OR LEASE, under Sec 42 of Mining Act, from area bounded by hatching (77777) L.&F. file 150108 B O.D.M. file 72.6.

ONT. DEPT. OF MINES  
MINING LANDS BR.  
THIS MAP FOR CHECKING  
PURPOSES ONLY - MUST  
NOT BE SOLD

DATE OF ISSUE

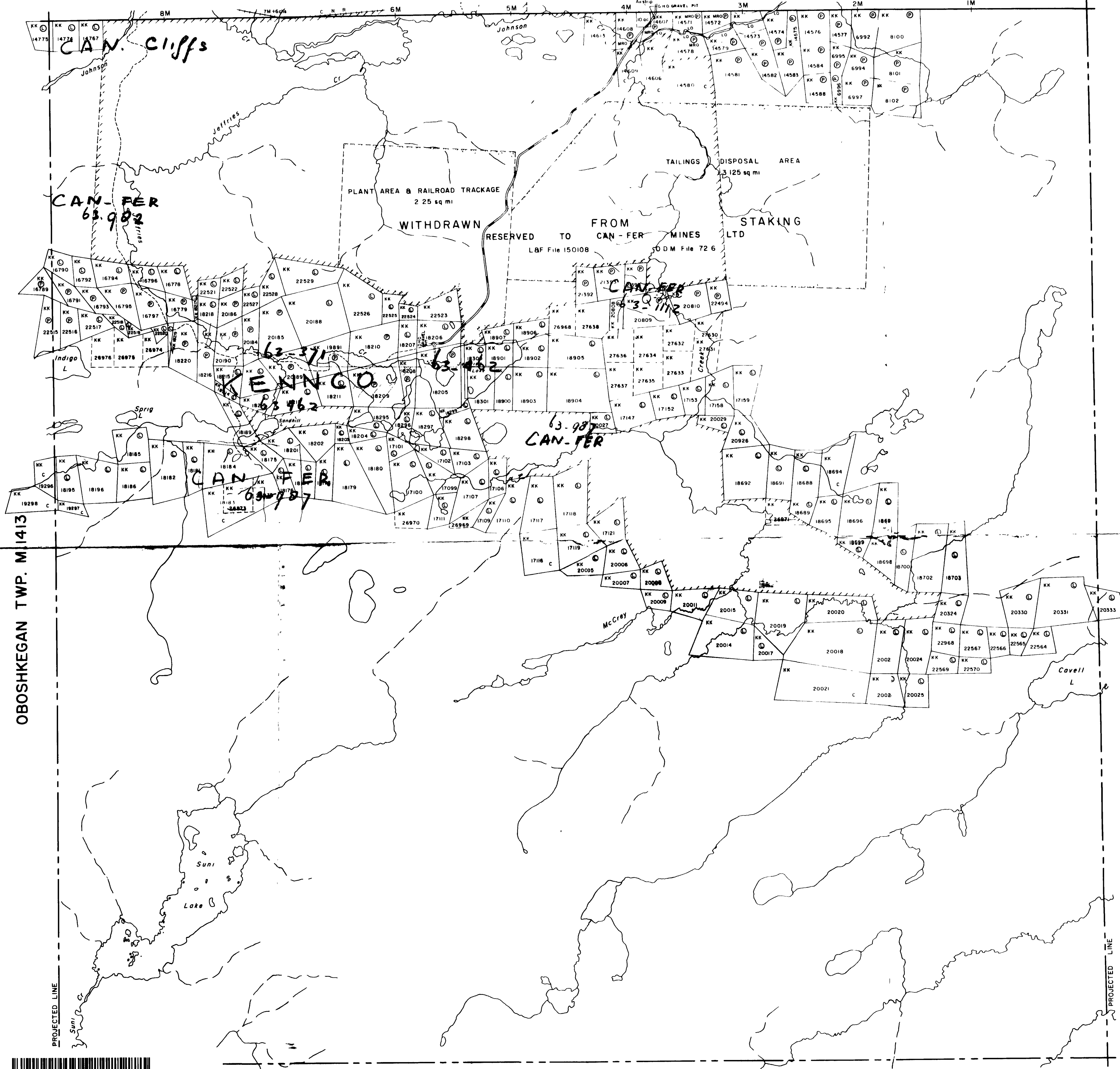
MAR 20 1967

ONTARIO DEPT. OF MINES

PLAN NO. M.2242

DEPARTMENT OF MINES

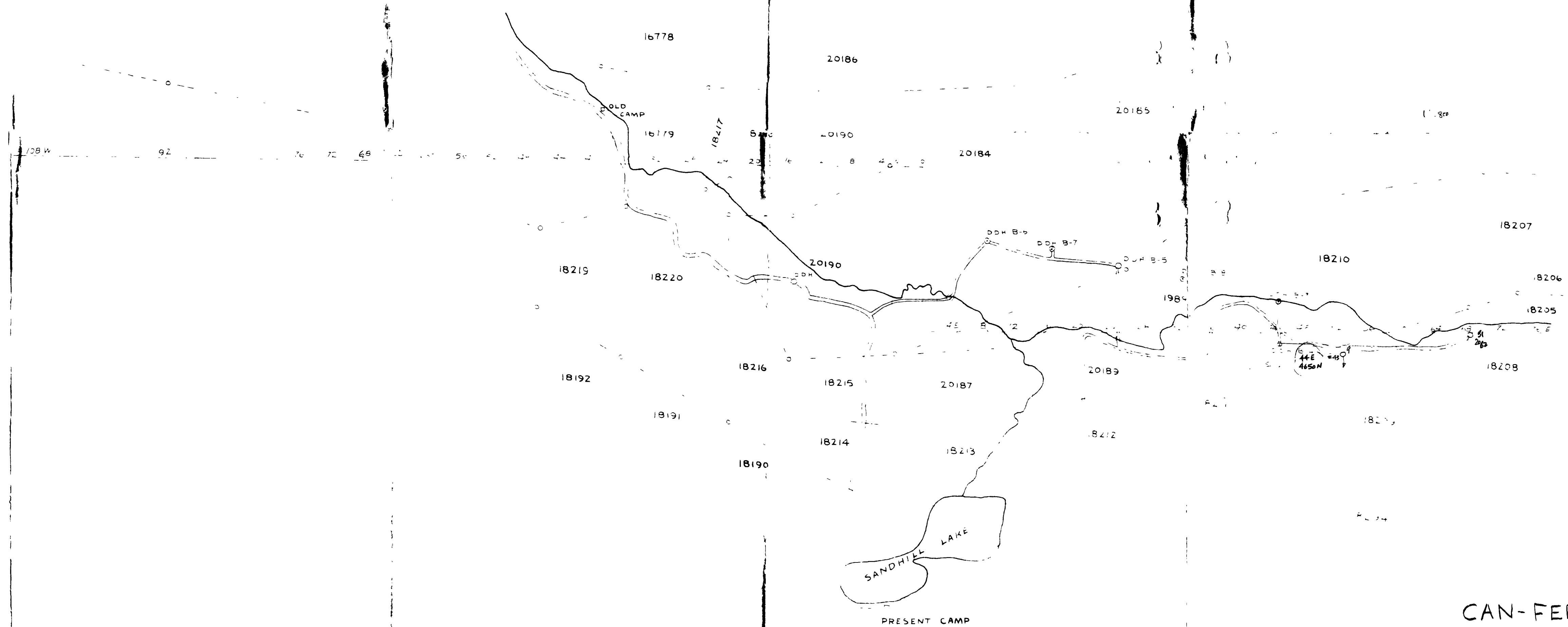
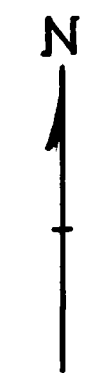
- ONTARIO -



OBOSHKEGAN TWP. M.1413

DANFORD TWP. M.2234





CAN-FER MINES LTD.  
PLAN OF DIAMOND DRILLING  
PASKA TWP.

