



42L06NE0058 20 0'SULLIVAN LAKE

010

Diamond Drilling

Area of O'Sullivan Lake

Report NO 20

Work performed by: R.J. Kasner-(Amax)

Claim NO	Hole NO	Footage	Date	Note
T.B. 300966	CJ 71-1	387'	Sept/71	(1)
	CJ 71-2	300'	Oct/71	(1)
	CJ 71-3	503'	Oct/71	(1)
	CJ 71-4	401'	Jan/72	(1)

Notes:

(1) 71/73

AMAX EXPLORATION, INC.
DIAMOND DRILL RECORD

Hole No. _____

Hole No. <u>CJ 71-1</u> Sheet _____	Length <u>387</u>	Commenced <u>SEPT. 27 1971</u>	Dip: Collar <u>-45°</u>		
Property <u>Copper Jim</u>	Bearing <u>Grid South</u>	Completed <u>SEPT 30 1971</u>	Etch Test	Depth	Rdg. True
Township _____	Dip <u>-45°</u>	Drilling Co. <u>INSPIRATION</u>			
Location <u>Line 0+00E</u>	Objective _____	Core Size <u>AQ</u>			
<u>2+70N</u>		Casing Left in Hole _____		<u>150</u>	<u>53</u> <u>45</u>
<u>Claim 300966</u>				<u>300</u>	<u>53</u> <u>45</u>

Location Sketch

North
↑

Claim No. _____

Scale: 1" = 1000'

Remarks _____

Footage		DESCRIPTION	Sample No.	From	To	Length					
From	To										
0	32	Casing									
32	52.5	Dacite - pale grey green, lightly carbonitized, very fine grained									
52.5	84	Meta-andesite - fine grained, green, highly carbonitized, minor diss. Cp, trace sphalerite									
84	110	Rhyolite - very fine grained, buff coloured, very hard, pillowed									
	97.5 - 100	Andesite									
	104.5 - 107.5	"									
	101 - 101.5	6" heavy Po, Cp									
110	130	Rhyodacite - green, very hard, pillowed, selvages sharp, well defined									
	127-128	1 foot ground, 128-130 narrow seam, heavy Po, Cp									
130	148	Meta-andesite									
148	152.5	Rhyolite									
152.5	167	Meta-andesite									
167	183.5	Rhyolite									
183.5	205	Meta-andesite									
205	212	Rhyolite - light Cp									
212	387	Rhyodacite - pillowed, selvages with Cp, Po									
		heaviest concentration 333-352									
		387 end of hole									

AMAX EXPLORATION, INC.
DIAMOND DRILL RECORD

Hole No.

Hole No. <u>CJ 71-2</u>	Sheet	Length <u>300</u>	Commenced <u>OCT. 1, 1971</u>	Dip: Collar
Property <u>Copper Jim</u>		Bearing <u>GRID South</u>	Completed <u>OCT. 4, 1971</u>	Etch Test
Township		Dip <u>-45°</u>	Drilling Co. <u>INSPIRATION</u>	Depth
Location <u>Line 2W</u>		Objective	Core Size <u>AQ</u>	Rdg.
<u>1760N</u>			Casing Left in Hole	True
<u>claim 300966</u>				

Location Sketch

North
↑

Claim No.

Scale: 1" = 1000'

Remarks

Footage		DESCRIPTION	Sample No.	From	To	Length				
From	To									
0	3	Casing								
3	69	Dacite to Rhyodacite - green to pale greenish, a few vague pillows, splashes of heavy Po, Cp over 2" to 6" widths @ 17, 19, 29, 38.5, 49, 52, 54, 55								
69	81	Rhyolite tuff, very fine grained, pale buff, vaguely bedded, silicified								
81	278	Dacitic - Rhyodacitic - Rhyolitic pillow lava, splashes Po & Cp interstices 101.5, 113, 116.5, 121.5, 123.5, 128, 137, 141, 143, 148, 157, 160.5, 162, 167, 168-169, 195, 198-199, 203-207, 212.5-213, 218, 219, 221-226 (split) 231, 233, 234, 242, 245, 247, 262.5								
278	300	Rhyolitic tuff - pale grey to buff								
		splashes Cp 286								
		splashes Py 294, 296								
		300 end of hole								

[Handwritten Signature]

AMAX EXPLORATION, INC.
DIAMOND DRILL RECORD

Hole No. _____

Hole No. <u>CJ 71-3</u>	Sheet <u>1</u>	Length <u>503 ft.</u>	Commenced <u>OCT. 5, 1971</u>	Dip: Collar <u>45°</u>
Property <u>Copper Jim</u>		Bearing <u>Grid South</u>	Completed <u>Oct. 8, 1971</u>	Etch Test Depth Rdg. True
Township _____		Dip <u>-45°</u>	Drilling Co. <u>Inspiration</u>	
Location <u>Line 2W</u>		Objective _____	Core Size <u>AQ</u>	
<u>4+00N</u>			Casing Left in Hole <u>60 ft.</u>	
<u>Claim 300966</u>				

Location Sketch North

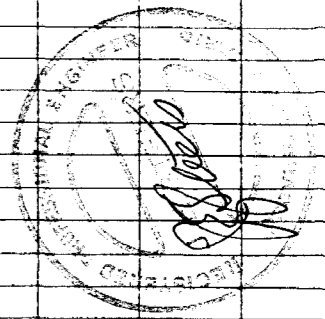
↑
North

Claim No. _____

Scale: 1" = 1000'

Remarks _____

Footage		DESCRIPTION	Sample No.	From	To	Length	Cu	Au	Ag		
From	To										
0	60	Overburden									
60	87.5	Rhyodacite pillow lava - greenish grey to light green pillow selvages, sharp distinct, locally well mineralized with Po & Cp Cp visible in splashes at following locations 60 ft. 66-67 70-72 76.3-85) split									
87.5	110	Rhyodacite - f.g. no pillows, grey-green, light diss. Po, occasional Po thread									
110	197	Pillowed Rhyodacite as before - local heavy Cp-Po in carbonitized selvages @ 114 - thin thread galena & Cp 114-116 split 127-132 " 132-139.5 "									
144.5	146.5	Tuff band upper contact 30° core lower " 40° core									
		150-160 pillows tightly packed, well mineralized, carbonitized, silicified selvages - split	1571	151.5	160	8.5	0.20	Tn	TF.		
197	202	Tuff band - grey to buff well bedded, contacts vague, bedding 30° core									
202	272	Dacite? - darker green, becoming med. grained, pillowed, lightly mineralized 248 - 3" massive Po with a little Cp 258.3 6" quartz vein with heavy Po, Cp (Cu 5%) 268-272 sparsely mineralized, Py, Po, Cp									



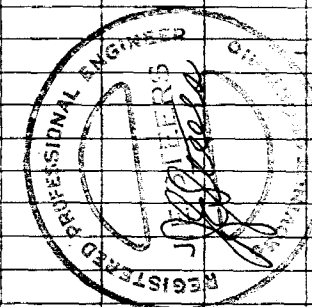
AMAX EXPLORATION, INC. DIAMOND DRILL RECORD

Hole No. GI-4

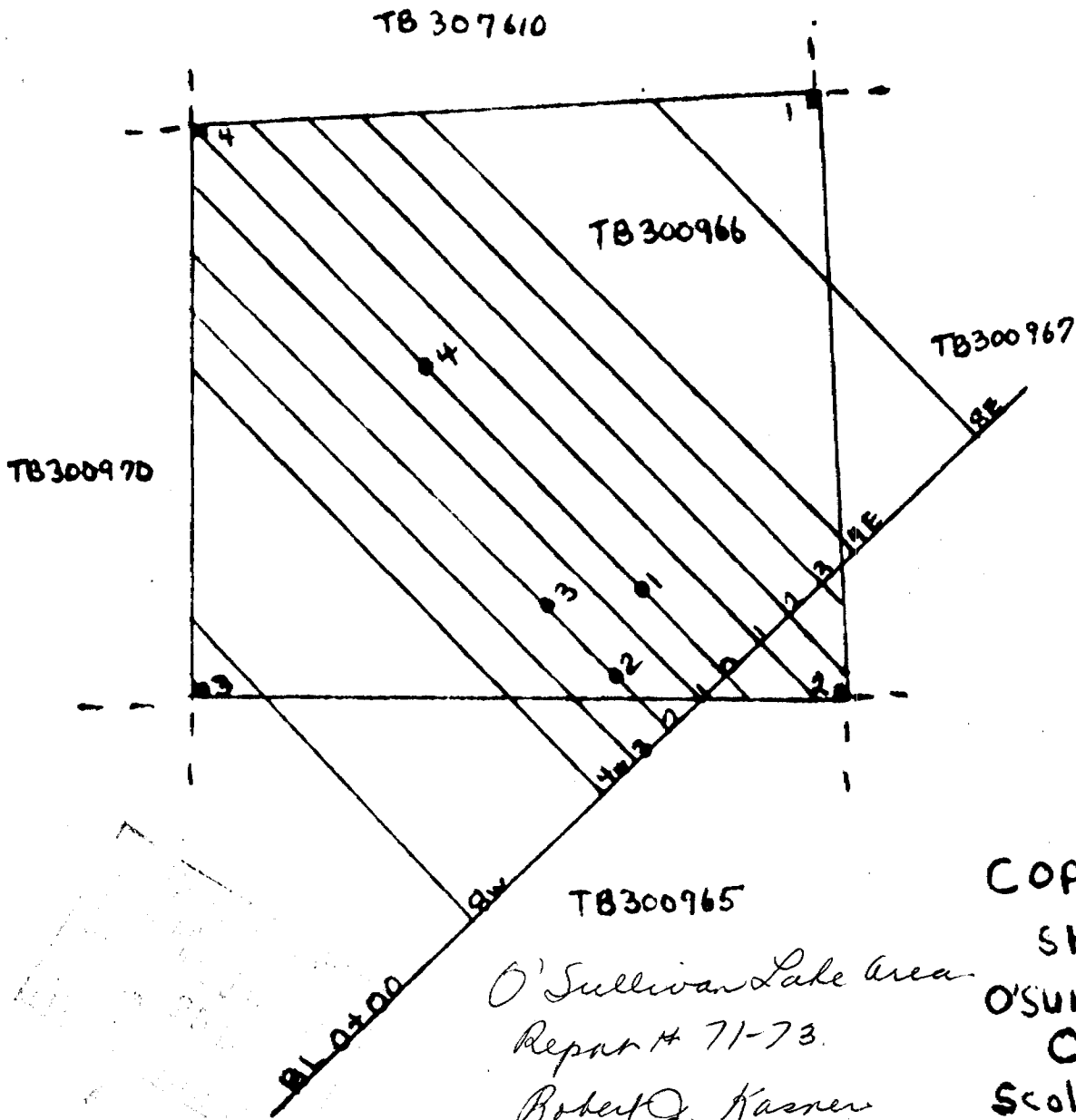
Hole No. <u>GI-4</u>	Sheet <u>1</u>	Length <u>401</u>	Commenced <u>JAN 21/72</u>	Dip: Collar <u>-45°</u>	Location Sketch North Claim No. _____ Scale: 1" = 1000'
Property <u>COPPER JIM</u>	Bearing <u>CLD SOUTH</u>	Completed <u>JAN 20/72</u>	Drilling Co. <u>Inspiration</u>	Etch Test Depth Rdg. True	
Township <u>C. Sullivan Lake</u>	Dip <u>-45°</u>	Core Size <u>AO</u>	Casing Left in Hole _____		
Location <u>LINE 2+00</u>	Objective _____				
<u>10+00N</u>					

Remarks _____

Footage		DESCRIPTION	Sample No.	From	To	Length						
From	To											
0	69	Casing										
69	120	Rhyodacite pillow lava - fine grained, pale grey-green, pervasive carbonitization lightly mineralized throughout; mineralization takes form of pyrite-pyrrhotite fracture fillings from flake to 1/16" thickness and splashes of heavy Po & Cp over sections up to 3 or 4". Heavy mineralization usually confined to pillow selvages. Heavy splashes @ 70, 71, 74, 77.5, 81.5, 83, 96, 114, 117, 118, 119 84-120 Mineralization sparser, mainly Py & Po										
120	159	Rhyolite pillow lava - pale grey to buff, silicified, bleached, a few quartz stringers, local heavy splashes, Cp & Po average sulfide 1%										
159	170	Andesite - very fine grained, green, massive										
170	180	Rhyolite as 120-159'										
180	205.5	Andesite as above - upper section carbonitized - 3" section at 188 heavy Po & Cp										
205.5	227	Dacite - pale grey, heavily carbonitized - 4" heavy Po, Cp @ 228'										
227	235	Andesite as above										
235	247	Contact zone between 2 flows? silicified, carbonitized, brecciated, bleached										
247	316	Dacitic to rhyodacite pillow lavas as before - scattered pillow selvages mineralized with Po & Py. Heavy splashes @ 278, 280, 290, 295, 299-300.										
316	360	Dacite tuff? - v.f.g. - pale bluish grey, carbonitized, locally brecciated, 340-342 - carbonitized, average 2% Cp										



DD # 1	Line	0+00	2+70N, 387'	Grid	South-45°
DD # 2	"	2W	1+60N, 300'	"	" - "
DD # 3	"	"	4+00N, 503'	"	" - "
DD # 4	"	0+00	10+00N, 401'	"	" - "



O'Sullivan Lake Area
 Report # 71-73.
 Robert J. Kasner

COPPER JIM
 SHOWING
 O'SULLIVAN LAKE
 ONT.
 Scale 1 inch = 400 Feet
 D.D. Locations
 R. J. Kasner
 May 22/73