



42L10NW0009 W95540.127 DURER LAKE

010

NORWIN GEOLOGICAL LIMITED  
DIAMOND DRILL LOG

Hole No: D-94-01

For: Jilbey Exploration Ltd.

Property: Durer Lake  
Claim Map: Durer Lake Area  
Province: Ontario  
Lat: 50° 40'N  
Long: 86° 56'W

Coordinates: L15+00W, 1+12S  
Azimuth: Grid South  
Dip: 45°  
Length: 366'  
Elevation: 0  
Core Size: BQ

Drill Company: Algoma Drilling  
Date Started: October 21, 1994  
Date Completed: November 1, 1994  
Core Location: Massey, Ontario  
Logged By: E. Sawitzky  
Date Logged: November 10, 1994

Acid Dip Tests



From (m)	To (m)	Sample No.	From (m)	To (m)	Width (m)	Au (ppb)	Ag (ppm)	Cu (ppm)	Zn (ppm)
-------------	-----------	---------------	-------------	-----------	--------------	-------------	-------------	-------------	-------------

103.5 119.0

## PEGMATITE (4A)

- Pinkish-grey cream; coarse grained;
- quartz +feldspar + muscovite with minor biotite and garnet;
- biotitic inclusions <1%, massive,
- trace sulphides.
- non-foliated.

119.0 242.67

QUARTZO-FELDSPATHIC BIOTITE GNEISS, PEGMATITE  
2A (B,C), 4A, 1

Predominantly migmatitic quartzo-feldspathic biotite gneiss with less foliate material and biotite (+/- amphibole, chlorite) enriched zones, intruded by pegmatoid dykes/sills.

Pale grey colour, fine-medium grained, generally equigranular, heterogeneous textures,

- quartz and feldspar and biotite (3%-10%),
- well foliated to banded,
- felsic segregations minor (<2% (1/2"-5" zones)
- ptygmatic felsic folding minor (<1%; (<1/2");
- f/c bleached alteration minor.
- sulphides minor to trace; pyrite on fractures, @ 188.0'; 2% pyrite, chalcopyrite (tr) banded, folia parallel, 1" zone.

Banding: 55° @ 120'  
35° @ 139'  
40° @ 149'  
40° @ 185'

Between 197.0 - 216.0 variable (5°-80°).  
30° @ 230'

Foliation:

45° @ 190'

Crenulated cleavage; 60-80° @ 182'

185401

242.67

246.0

Nil

0.2

124

62

From (m)	To (m)	Sample No.	From (m)	To (m)	Width (m)	Au (ppb)	Ag (ppm)	Cu (ppm)	Zn (ppm)
<b>PEGMATITE</b>									
			150.3 - 152.83'						
			168.58 - 170.0'						
			178.0 - 178.75'						
			241.17 - 241.5'						
<b>BIOTITE SCHIST (2C)</b>									
			128.33 - 129.25'						
			181.58 - 183.58'						
			@ 188.58 1" unit.						
242.67	281.67		<b>AMPHIBOLITE (1B, C)</b>						
			Hornblende and garnet and plagioclase and quartz with minor biotite and sulphides.						
			Grey-green; coarse grained, porphyroblastic (<5%) garnet (0.4'); non-magnetic, - foliated, crenulated foliation; crude banding locally.						
			Sulphides: po, lesser pyrite, trace chalcopyrite; disseminated, f/c, blebs. Rare 1/2-1" massive po/py with lesser chalcopyrite at contact						
			(242.67'). 1%.						
			Foliation: 40° @ 246.0' 5° @ 260.0' 20° @ 280.0'						
			Banding: 35° @ 250°						
		185402	246.0	249.0		Nil	0.1	73	29
		185403	249.0	252.0		Nil	0.1	70	24
		185404	252.0	255.0		Nil	0.2	69	25
		185405	255.0	258.0		Nil	0.1	94	23
		185406	258.0	261.0		3	0.1	86	22
		185407	261.0	264.0		Nil	0.2	88	22
		185408	264.0	267.0		Nil	0.1	63	26
		185409	267.0	270.0		Nil	0.1	84	21
		185410	270.0	273.0		Nil	0.1	47	28
		185411	273.0	276.0		3	0.1	68	33
		185412	276.0	279.0		3	0.1	77	49
		185413	279.0	281.67		Nil	0.2	75	45

From (m)	To (m)	Sample No.	From (m)	To (m)	Width (m)	Au (ppb)	Ag (ppm)	Cu (ppm)	Zn (ppm)
281.67	366.0								
		185414	281.67	286.0		Nil	0.1	24	82
		185415	311.0	316.0		Nil	0.1	51	72
		185416	330.41	334.0		Nil	0.1	11	90
		185417	362.75	366.0		7	0.1	80	108

QUARTZ-FELDSPATHIC-BIOTITE GNEISS, BIOTITE SCHIST  
2A, C (B); 4A (B)

Predominantly quartz-feldspathic biotite gneiss and foliate with numerous narrow biotite-chlorite schist zones intruded by felsic pegmatoid dykes/sills.

Grey colour; fine-medium grained; generally equigranular, with varying biotite grain size (fine-coarse grained); non-magnetic, heterogeneous textures:

- foliated, crenulated and banded, locally "massive appearing".
- felsic segregations common forming veins and stringers/blebs (42%).

Sulphides trace.

Foliation: 30° @ 32.2'; 70° @ 335.0',  
70° @ 364.0'.

Banding: 70° @ 294.0',  
70° @ 360.0',

(Irregular banding from 281.0' - 294.0').

Crenulation cleavage: 70-80° @ 342.0',  
70° @ 322.0',  
80° @ 330.0'

PEGMATITE

285.17' - 286.33' muscovite, trace pyrite (f/c).

335.83' - 339.58' (4b, 3"); garnet, trace pyrite, green-blue mineral?

340.17' - 341.25' garnet, muscovite, trace pyrite, black mineral?

From (m)	To (m)	Sample No.	From (m)	To (m)	Width (m)	Au (ppb)	Ag (ppm)	Cu (ppm)	Zn (ppm)
----------	--------	------------	----------	--------	-----------	----------	----------	----------	----------

## BIOTITE-CHLORITE SCHIST

(non-magnetic)

316.58' - 316.83' bio sch, tr py  
 321.67' - 322.17' bio sch, tr py  
 326.92' - 328.17' chl-bio schist, tr py  
 328.58' - 328.83' chl-bio schist, tr py  
 329.67' - 329.92' chl-bio schist, tr py  
 330.5' - 334.0' chl-bio schist, tr py  
 334.75' - 335.0' bio (chl) sch, tr py.  
 332.75' - 333.17' chl-bio sch, tr py  
 334.41' - 335.25' chl-bio-garnet sch,  
 tr py.

Chlorite-biotite schist: Green-black colour, fine grained, strongly foliated and crenulated, sharp to gradational contacts; less altered schist zones indicate prolyth is quartzo-feldspathic biotite gneiss. These schists are alteration zones of primary gneisses and may represent retrograde metamorphism along fault structures.

E.O.H.

NORWIN GEOLOGICAL LIMITED  
DIAMOND DRILL LOG

Hole No: D-94-02

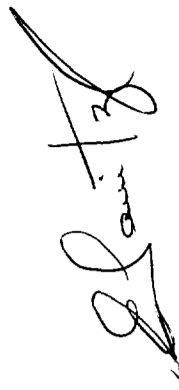
For: Jilbey Exploration Ltd.

Property: Durer Lake  
Claim map: Durer Lake Area  
Province: Ontario  
Lat: 50° 40'N  
Long: 86° 56'W

Coordinates: L13+00W, 0+30N  
Azimuth: Grid South  
Dip: 45°  
Length: 295'  
Elevation: 0  
Core Size: BQ

Drill Company: Algoma Drilling  
Date Started: November 3, 1994  
Date Completed: November 11, 1994  
Core Location: Massey, Ontario  
Logged By: E. Sawitzky  
Date Logged: November 12, 1994

Acid Dip Tests



NORWIN GEOLOGICAL LIMITED  
DIAMOND DRILL LOG

Hole No: D-94-02

From (m)	To (m)	Rock Type/Description	Sample No.	From (m)	To (m)	Width (m)	Au (ppb)	Ag (ppm)	Cu (ppm)	Zn (ppm)
0	9.0	OVERBURDEN								
9.0	22.0	BIOTITE-GARNET-QUARTZ-PO SCHIST [2a, 1] Mineralized zone: - quartzo-feldspathic(?) - biotite-garnet (+/- hornblende) assemblage with c.g. discordant hornblende-rich zone (12.5-16.5). - banded sequence with sharp lower contact with host biotitic gneiss. - po mineralization is fine grained, semi-massive, banded (1/8"-1/2" bands) to disseminated. 2-15% , average 3%. - clotty po blebs in amphibole-rich zone. - po bands show interference pattern suggesting "early" deposition. - garnet and biotite variable in %. - 6" weakly bleached zone at lower contact with biotite-gneiss. - amphibolite zone discordant with surrounding mineralized zone.	185418 185419 185420 185421 185422	9.0 12.0 14.0 16.5 19.5	12.0 14.0 16.5 19.5 22.0		3 Nil Nil Nil 14	0.4 0.4 0.4 0.4 0.5	146 93 100 112 156	61 73 41 263 83

Banding: 9.0 - 10.5' parallel to C.A.  
30° ● 12.0'  
50° ● 20.0'.



From (m)	To (m)	Sample No.	From (m)	To (m)	Width (m)	Au (ppb)	Ag (ppm)	Cu (ppm)	Zn (ppm)	
22.0	54.33	185423	22.0	25.0		Ni1	0.4	39	83	
<p><b>QUARTZO-FELDSPATHIC-BIOTITE GNEISS [2a (b,c)]</b>  Predominantly migmatitic gneiss with minor foliate rock.</p> <ul style="list-style-type: none"> <li>- dark grey colour, fine-medium grained, equigranular, non-magnetic.</li> <li>- crude banding.</li> <li>- foliation strong, crenulation of foliation prominent locally (where biotite increases).</li> <li>- f/c alteration, bleaching along late fractures, minor (&lt;1%), random orientation.</li> <li>- felsic segregations - quartz and quartz-feldspar veins/blebs, 1-2%.</li> <li>- sulphides trace.</li> <li>- variable biotite content from 3% to locally 15%.</li> <li>- mineral assemblage quartz + plagioclase + biotite + (rare) garnet.</li> <li>- late fractures with minor bleaching (post-dates interference pattern).</li> </ul> <p>Banding: 65° @ 27'  45° @ 23' (contact with alteration associated with latter gneiss).</p> <p>Crenulation cleavage: 75°-80° @ 30.0' (biotite)  Biotite schist: 26.5 - 27.33</p>										
54.33	66.0	185425	54.33	60.0		3	0.1	54	78	
		185426	60.0	65.0		Ni1	0.1	49	73	
<p><b>BIOTITE SCHIST (2C)</b>  Biotite schist with 20% biotite gneiss.</p> <ul style="list-style-type: none"> <li>- increased biotite content 15-25% with quartz and feldspar +/- garnet (&lt;1/2%).</li> <li>- grey-black colour, fine-medium grained, schistose.</li> <li>- foliations is strongly crenulated.</li> <li>- minor pegmatoid pods (&lt;3 inch) and felsic segregations (&lt;2%).</li> </ul>										



From (m)	To (m)	Sample No.	From (m)	To (m)	Width (m)	Au (ppb)	Ag (ppm)	Cu (ppm)	Zn (ppm)
----------	--------	------------	----------	--------	-----------	----------	----------	----------	----------

90.33 134.0 QUARTZ-FELDSPAR-BIOTITE GNEISS [2A (B,C), 4A]  
 Predominantly migmatitic biotite gneiss with minor foliate. Dark grey, medium grained, heterogeneous textures, crude to moderate banding, interference patterns, foliation strong; zone with increased biotite av. 15% (10-25%); felsic segregations (<2%); pyrite 1/2% locally (133.0'); calcite filled late fractures.

Biotite schist between 109.0 - 111.67'.  
 Pegmatite between 120.17' - 121.67'.  
 Banding: 25° @ 101.0'  
 45° @ 126.0 ( parallel to foliation).

134.0 153.0 QUARTZ-FELDSPAR-BIOTITE GNEISS (2B)  
 Pale grey, fine grained, equigranular, homogeneous textures, local banding (only where grain size increases); foliation weak (corresponds with low biotite-content <5%), fracturing strong; quartz-infilled fractures increases, chloritic slickensides; 3%  
 - pyrite, disseminated, minor (<<1/2%).  
 - increased silicification? giving rock its paler colour.

Banding: 10° @ 143.0'  
 15° @ 138.0', parallel to foliation.

153.0 160.83 PEGMATITE (4A)  
 Cream to yellowish in colour; coarse grained, massive, fractures moderate, quartz-rich sections; feldspar (less), muscovite, garnet, trace biotite moderate.

From (m)	To (m)	Sample No.	From (m)	To (m)	Width (m)	Au (ppb)	Ag (ppm)	Cu (ppm)	Zn (ppm)	
160.33	183.0		163.0	165.0		7	0.1	83	57	
<p>QUARTZ-FELDSPAR-BIOTITE-GNEISS (2B) As between 134.0 - 153.0.</p> <p>Weak banding, low biotite content (&lt;5%), late calcite fractures; f/c alteration (weak); trace sulphide.</p> <p>163.33' - 165.0'; alteration zone: bleaching with muscovite, po/py 1% quartz veining (3").</p> <p>Banding: 60° @ 167.0'.</p>										
183.0	217.0		195.17	198.58		Ni1	0.1	61	96	
<p>QUARTZ-FELDSPAR-BIOTITE GNEISS [2A (C)]</p> <p>Predominantly migmatitic biotitic gneiss with increased biotite content locally to form biotite schist zones.</p> <p>- brownish grey, medium grained, heterogeneous textures.</p> <p>- well-foliated, banded, interference patterns, and crenulated cleavage, weakly fractured.</p> <p>- biotite variable 5% - 30%, where strongly biotitic forms a crenulated biotite schist.</p> <p>- felsic segregations increased (3-5%) including 12" quartz vein.</p> <p>- f/c alteration (weak).</p> <p>Banding: 10° @ 183.0' 25° @ 192.0' 20° @ 196.0'.</p> <p>205.0 - 217.0' banding contorted (0 - 80°).</p> <p>Crenulation cleavage: 75° @ 187.0' 85° @ 207.0' 65-70° @ 214.0'.</p>										
		185428	207.17	208.5		Ni1	---	---	---	
		185429				Ni1	---	---	---	

From (m)	To (m)	Sample No.	From (m)	To (m)	Width (m)	Au (ppb)	Ag (ppm)	Cu (ppm)	Zn (ppm)
-------------	-----------	---------------	-------------	-----------	--------------	-------------	-------------	-------------	-------------

217.0	295.0	QUARTZ-FELDSPAR-BIOTITE GNEISS [2A (B,C)] Predominantly migmatitic biotite gneiss with minor foliate (10%). - brownish grey, medium grained (minor fine grained) equigranular, heterogeneous textures. - quartz + feldspar + biotite + minor garnet. - biotite variable 3%-15%, locally biotite schist zones formed (minor). - banding common, interference pattern, foliated strongly. - weak crenulation cleavage. - felsic segregations forming veins/"blebs"/ stringers 3%. - late fracture-controlled bleaching. - trace sulphide. (Quartz veins increased 3% <6" widths).							
-------	-------	--	--	--	--	--	--	--	--

Banding: 10° @ 220.0'  
 10° @ 225.0'  
 25° @ 234.0'  
 undulating between 245.0' - 250.0'.  
 20° @ 264.0'  
 20° @ 280.0' 10°-20° between 285.0 - 295.0'.

E.O.H.

NORWIN GEOLOGICAL LIMITED  
DIAMOND DRILL LOG

Hole No: D-94-03

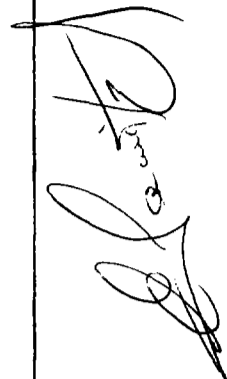
For: Jilbey Exploration Ltd.

Property: Durer Lake  
Claim Map: Durer Lake Area  
Province: Ontario  
Lat: 50° 40'N  
Long: 86° 56'W

Coordinates: 5+00W; 0+60N  
Azimuth: Grid South  
Dip: 60°  
Length: 402'  
Elevation: 0'  
Core Size: BQ

Drill Company: Algoma Drilling  
Date Started: November 13, 1994  
Date Completed: November 17, 1994  
Core Location: Massey, Ontario  
Logged By: E. Sawitzky  
Date Logged: November 16, 1994

Acid Dip Tests





From (m)	To (m)	Sample No.	From (m)	To (m)	Width (m)	Au (ppb)	Ag (ppm)	Cu (ppm)	Zn (ppm)
92.67	123.0	185433	97.0	102.0		Ni1	0.1	51	40
		185434	112.0	117.0		3	0.1	50	108
		185435	117.0	122.0		Ni1	0.1	51	69

#### QUARTZ-FELDSPAR-BIOTITE GNEISS (2B)

- Silicified gneiss. As between 30.0' - 61.25'.
- moderate pervasive silicification giving rock pale grey colour.
- fine-medium grained, heterogeneous texture, foliated strongly (locally crenulated);
- interference patterns present;
- felsic segregations (includes minor pegmatite) 3-5%.
- po/py <<1%, disseminated and f/c.
- white-grey mica, enriched zones (5-7%).

Foliation: 45° @ 109.0' and 0° @ 119.0'.

123.0 174.67

#### QUARTZ-FELDSPAR-BIOTITE GNEISS [2B (C)]

- fine grained, massive with rare banding, foliated weakly, equigranular, brownish grey, minor felsic segregation (<<1%).
- unaltered except for minor f/c alteration and bleaching near pegmatite contact (172.0' - 174.67').
- sulphides trace, rare po/cpy @ 125.25'.
- rare pygmatic quartz stringers <1%.
- biotite 3-5%.
- biotite (chl?) schist @ 164.0 - 167.0' (with carbonate?).
- narrow pegmatite @ 130.67' (0.5').

Banding (rare); 80° @ 164.0'.

Foliation: 10° @ 170.0';  
15° @ 134.0'.

Lower contact: 45°, sharp.



From (m)	To (m)	Sample No.	From (m)	To (m)	Width (m)	Au (ppb)	Ag (ppm)	Cu (ppm)	Zn (ppm)	
174.67	207.0									
PEGMATITE (4A)										
Cream-grey, coarse grained, heterogeneous texture, massive, sulphides trace. Feldspar (pink) + quartz + white mica + biotite plus garnet (minor) + blue-green mineral?										
207.0	221.0									
QUARTZ-FELDSPAR-BIOTITE GNEISS (2B)										
Fine grained biotite gneiss, massive, no banding, equigranular, weak-moderate foliation, weakly altered (f/c alteration (<1%); trace sulphide, no felsic segregation or veining.										
Foliation 2° @ 218.0'.										
221.0	237.83									
SHEARED, BRECCIATED GNEISS (2B BX, SHEAR)										
- fine grained to medium grained, grey colour,										
- foliated, brecciated.										
- brecciation of quartz veins/felsic segregation/ host rock.										
- chloritic/biotitic (5-30% locally).										
- felsic phases (fragments) 5%.										
- grey colour = bleaching (silicified? moderately).										
- sulphides <1% py (po); f/c, disseminated.										
- no banding.										
- irregular, anastomosing foliation, crenulated.										
237.83	254.83									
QUARTZ-FELDSPAR-BIOTITE GNEISS (2A, C)										
- biotite enriched gneiss (5%-30%).										
- brownish grey colour, fine grained, foliated and crenulated, weak to crude banding.										
- felsic phases 1-3%.										
- trace sulphides.										
- locally very bio-rich (30-40%) and schistose.										
Banding: 20° @ 244.0'										
50° @ 252.0'										

185436	222.0	227.0	Ni1	0.1	37	46
185437	227.0	232.0	Ni1	0.1	53	39
185438	232.0	237.0	Ni1	0.1	32	372

From	To	Sample	From	To	Width	Au	Ag	Cu	Zn
(m)	(m)	No.	(m)	(m)	(m)	(ppb)	(ppm)	(ppm)	(ppm)

cont'd

Crenulation cleavage: 50° @ 247.0'  
Foliation: 60° @ 250.0'.

254.83 327.67 QUARTZ-FELDSPAR-BIOTITE GNEISS [2A (B), 4A]  
 - migmatitic biotite gneiss intruded by several pegmatitic sills/dykes.  
 - fine-medium grained, massive to banded, foliated/crenulated, pale brownish grey colour, heterogeneous texture.  
 - biotite variable, 3% to 10%.  
 - sulphide minor to trace.  
 - between 294.33 to 304.5 felsic segregations increases 10% (pegmatoid material).

Pegmatite between:

254.83' - 259.67'  
304.5' - 307.5'  
311.33' - 312.75'

Banding: 40° @ 268.0'  
75° @ 284.0'Interference pattern between 285.0' - 292.0'.  
50° @ 320.0'.

Foliation parallel to banding.

327.67 363.5 PEGMATITE, MIGMATITIC BIOTITE GNEISS (4A, 2A)

Pegmatite = 60%, Gneiss = 40%  
Quartz-feldspar-biotite gneiss  
Biotite = 3-8%

- fine grained, massive to banded, foliated, grey, equigranular, trace sulphide, sheared, rubbly core between 353.0' - 356.67'.

From (m)	To (m)	Sample No.	From (m)	To (m)	Width (m)	Au (ppb)	Ag (ppm)	Cu (ppm)	Zn (ppm)
-------------	-----------	---------------	-------------	-----------	--------------	-------------	-------------	-------------	-------------

Banding: 75° @ 340.0

Foliation (schistose): 20° @ 355.0'

Pegmatite between:

327.67' - 337.25'

347.33' - 353.0'

357.17 - 363.5'.

363.5 402.0

QUARTZ-FELDSPAR-BIOTITE GNEISS (2A)

- migmatitic biotite gneiss.
- well banded, foliated with interference patterns throughout.
- fine-medium grained, brownish grey colour, heterogeneous textures.
- felsic segregations, minor, <2%.
- trace sulphides.
- biotite 5-15%.
- foliation parallel to banding, crenulated locally.
- ptigmatic folding (minor) of quartz stringers.

Banding: 0° to 80° throughout.

Foliation: 10° @ 400.0'

Crenulation cleavage: 40° @ 394.0'.

E.O.H.



# Report of Work Conducted After Recording Claim

## Mining Act

Transaction Number

W9540.127

Personal information collected on this form is obtained under the authority of the Mining Act. This collection should be directed to the Provincial Manager, Mining Lands, Ministry of Northern Development and Mines, Sudbury, Ontario, P3E 6A5, telephone (705) 670-7264.



42L10NW0009 W9540.127 DURER LAKE

900

- Instructions:**
- Please type or print and submit in duplicate.
  - Refer to the Mining Act and Regulations for requirements of filing assessment work or consult the Mining Recorder.
  - A separate copy of this form must be completed for each Work Group.
  - Technical reports and maps must accompany this form in duplicate.
  - A sketch, showing the claims the work is assigned to, must accompany this form.

Recorded Holder(s) ERIC JOHN PLEXMAN		Client No. 182939
Address c/o 18 STRATHCONA DRIVE, NORTH BAY, ONTARIO P1A 2M8		Telephone No. (705) 472-6464
Mining Division THUNDER BAY	Township/Area DURER LAKE AREA	M or G Plan No. G-0228
Dates Work Performed From: OCTOBER 17, 1994		To: DECEMBER 12, 1994

**Work Performed (Check One Work Group Only)**

Work Group	Type
Geotechnical Survey	
Physical Work, Including Drilling	DIAMOND CORE DRILLING
Rehabilitation	
Other Authorized Work	SECTION 18 ONLY
Assays	
Assignment from Reserve	

Total Assessment Work Claimed on the Attached Statement of Costs \$ 44,993.64

**Note:** The Minister may reject for assessment work credit all or part of the assessment work submitted if the recorded holder cannot verify expenditures claimed in the statement of costs within 30 days of a request for verification.

**Persons and Survey Company Who Performed the Work (Give Name and Address of Author of Report)**

Name	Address
Ed Sawitzky (Norwin Geological)	Norwin Geological Ltd. 560 Notre Dame Ave. Sudbury, Ontario P3C 5L2
Algoma Drilling	P.O. Box 16, Blind River, Ontario POR 1A0
Norsco Holdings Limited	618 Baywood Street, North Bay, Ontario P1A 4T1

(attach a schedule if necessary)

**Certification of Beneficial Interest \* See Note No. 1 on reverse side**

I certify that at the time the work was performed, the claims covered in this work report were recorded in the current holder's name or held under a beneficial interest by the current recorded holder.	Date April 27, 1995	Recorded Holder or Agent (Signature) 
--	------------------------	--

**Certification of Work Report**

I certify that I have a personal knowledge of the facts set forth in this Work report, having performed the work or witnessed same during and/or after its completion and annexed report is true.		
Name and Address of Person Certifying David Jones c/o 18 Strathcona Drive, North Bay, Ontario P1A 2M8		
Telephone No. (705) 472-6464	Date April 27, 1995	Certified By (Signature) 

**For Office Use Only**

Total Value Cr. Recorded  44,994	Date Recorded May 12/95	Mining Recorder M.G. Wern	Received Stamp THUNDER BAY MINING DIVISION RECEIVED MAY 12 1995 AM PM 7,8,9,10,11,12,1,2,3,4,5,6
	Deemed Approval Date	Date Approved May 24/95	
	Date Notice for Amendments Sent		





Ministry of Northern Development and Mines

Ministère du Développement du Nord et des mines

**Statement of Costs for Assessment Credit**

**État des coûts aux fins du crédit d'évaluation**

**Mining Act/Loi sur les mines**

Transaction No./N° de transaction

**W9540-127**

Personal information collected on this form is obtained under the authority of the **Mining Act**. This information will be used to maintain a record and ongoing status of the mining claim(s). Questions about this collection should be directed to the Provincial Manager, Minings Lands, Ministry of Northern Development and Mines, 4th Floor, 159 Cedar Street, Sudbury, Ontario P3E 6A5, telephone (705) 670-7264.

Les renseignements personnels contenus dans la présente formule sont recueillis en vertu de la **Loi sur les mines** et serviront à tenir à jour un registre des concessions minières. Adresser toute question sur la collecte de ces renseignements au chef provincial des terrains miniers, ministère du Développement du Nord et des Mines, 159, rue Cedar, 4<sup>e</sup> étage, Sudbury (Ontario) P3E 6A5, téléphone (705) 670-7264.

**1. Direct Costs/Coûts directs**

Type	Description	Amount Montant	Totals Total global
<b>Wages Salaires</b>	Labour Main-d'oeuvre		
	Field Supervision Supervision sur le terrain	2250.00	2250.00
<b>Contractor's and Consultant's Fees Droits de l'entrepreneur et de l'expert-conseil</b>	Type		
	Geologists Fees	10753.50	
	Algoma Drilling	23584.94	
	Report	2889.00	37227.44
<b>Supplies Used Fournitures utilisées</b>	Type		
	Field Supplies	152.70	
	Assays	639.86	
	Groceries	21.11	
			813.67
<b>Equipment Rental Location de matériel</b>	Type		
<b>Total Direct Costs Total des coûts directs</b>			<b>40291.11</b>

**2. Indirect Costs/Coûts indirects**

**\*\* Note:** When claiming Rehabilitation work Indirect costs are not allowable as assessment work. Pour le remboursement des travaux de réhabilitation, les coûts indirects ne sont pas admissibles en tant que travaux d'évaluation.

Type	Description	Amount Montant	Totals Total global
<b>Transportation Transport</b>	Type		
	Truck & fuel	464.92	
			464.92
<b>Food and Lodging Nourriture et hébergement</b>	Meals	515.47	
	Accom.	937.99	1669.61
	Misc(phone)	216.15	1669.61
<b>Mobilization and Demobilization Mobilisation et démobilsation</b>	Algoma Drilling	2568.00	2568.00
<b>Sub Total of Indirect Costs Total partiel des coûts indirects</b>			<b>4702.53</b>
<b>Amount Allowable (not greater than 20% of Direct Costs) Montant admissible (n'excédant pas 20 % des coûts directs)</b>			<b>4702.53</b>
<b>Total Value of Assessment Credit (Total of Direct and Allowable Indirect costs) Valeur totale du crédit d'évaluation (Total des coûts directs et indirects admissibles)</b>			<b>44993.64</b>

**Note:** The recorded holder will be required to verify expenditures claimed in this statement of costs within 30 days of a request for verification. If verification is not made, the Minister may reject for assessment work all or part of the assessment work submitted.

**Note :** Le titulaire enregistré sera tenu de vérifier les dépenses demandées dans le présent état des coûts dans les 30 jours suivant une demande à cet effet. Si la vérification n'est pas effectuée, le ministre peut rejeter tout ou une partie des travaux d'évaluation présentés.

**Filing Discounts**

1. Work filed within two years of completion is claimed at 100% of the above Total Value of Assessment Credit.
2. Work filed three, four or five years after completion is claimed at 50% of the above Total Value of Assessment Credit. See calculations below:

Total Value of Assessment Credit	Total Assessment Claimed
	x 0.50 =

**Remises pour dépôt**

**THUNDER BAY MINING DIVISION**

**RECEIVED**

**MAY 12 1995**

1. Les travaux déposés dans les deux ans suivant leur achèvement sont remboursés à 100 % de la valeur totale susmentionnée du crédit d'évaluation.
2. Les travaux déposés trois, quatre ou cinq ans après leur achèvement sont remboursés à 50 % de la valeur totale du crédit d'évaluation susmentionné. Voir les calculs ci-dessous.

Valeur totale du crédit d'évaluation	Evaluation totale demandée
	x 0,50 =

**Certification Verifying Statement of Costs**

I hereby certify: that the amounts shown are as accurate as possible and these costs were incurred while conducting assessment work on the lands shown on the accompanying Report of Work form.

that as Manager of Jilbey Exploration I am authorized (Recorded Holder, Agent, Position in Company)

to make this certification

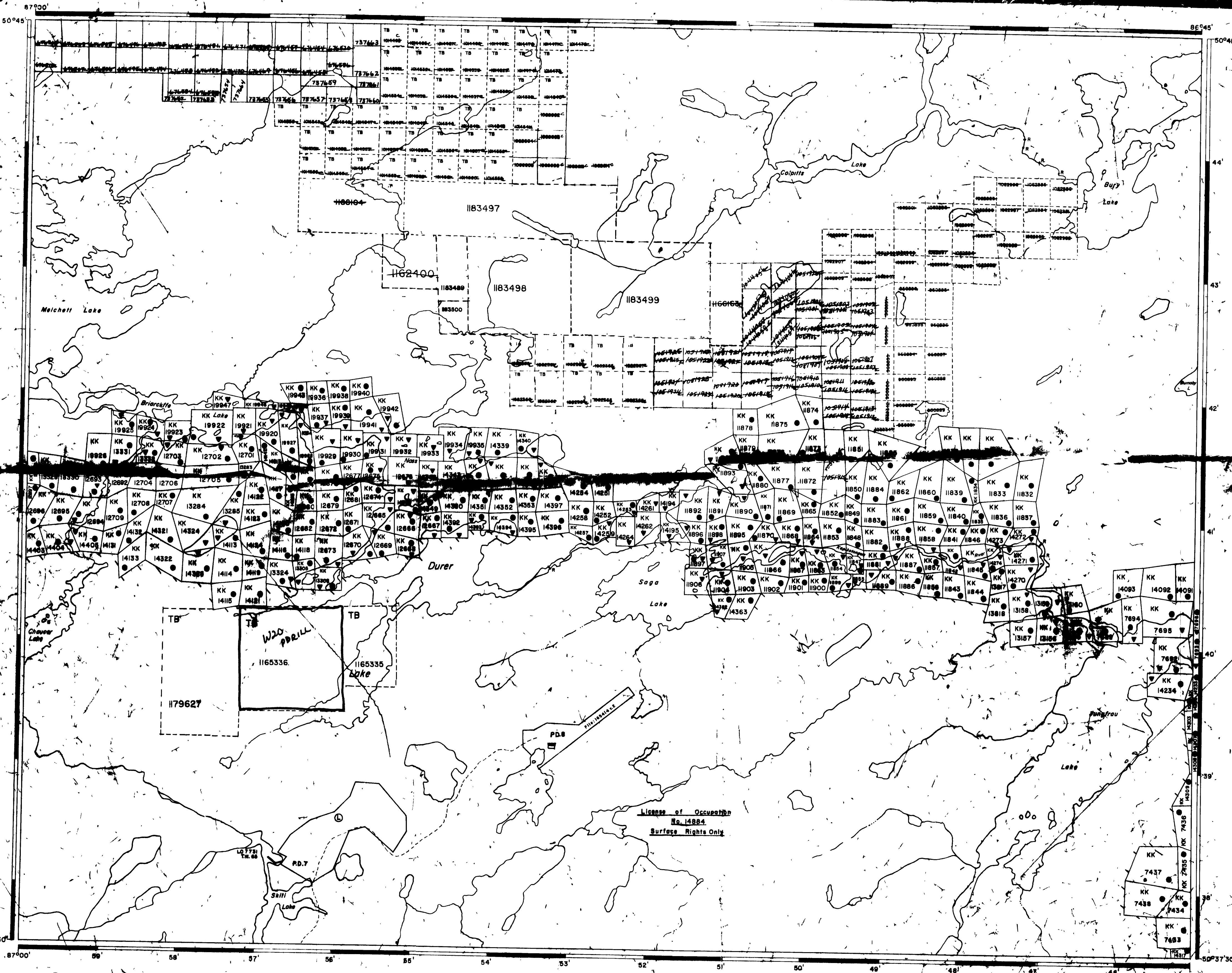
**Attestation de l'état des coûts**

J'atteste par la présente : que les montants indiqués sont le plus exact possible et que ces dépenses ont été engagées pour effectuer les travaux d'évaluation sur les terrains indiqués dans la formule de rapport de travail ci-joint.

Et qu'à titre de \_\_\_\_\_ je suis autorisé (titulaire enregistré, représentant, poste occupé dans la compagnie)

à faire cette attestation

Signature	Date
	April 27, 1995



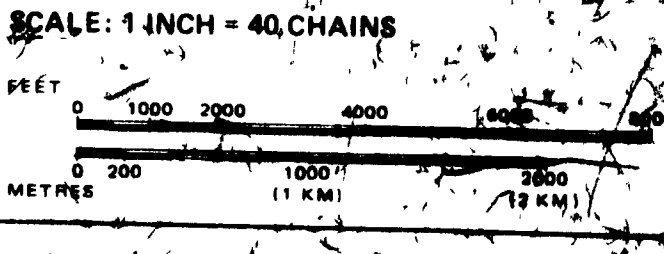
THE INFORMATION THAT APPEARS ON THIS MAP HAS BEEN COMPILED FROM VARIOUS SOURCES AND ACCURACY IS NOT GUARANTEED. THOSE WISHING TO STAKE MINING CLAIMS SHOULD CONSULT WITH THE MINING RECORDER, MINISTRY OF NORTHERN DEVELOPMENT AND MINES, FOR ADDITIONAL INFORMATION ON THE STATUS OF THE LANDS SHOWN HEREON.

**LEGEND**

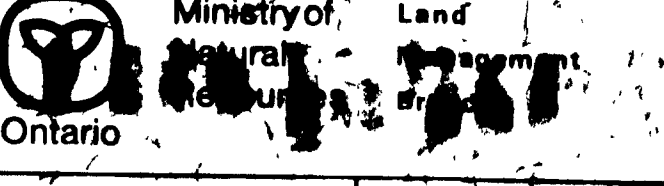
- HIGHWAY AND ROUTE No.
- OTHER ROADS
- TRAILS
- SURVEYED LINES
- TOWNSHIPS, BASE LINES, ETC.
- LOTS, MINING CLAIMS, PARCELS, ETC.
- UNSURVEYED LINES
- LOT LINES
- PARCEL BOUNDARY
- MINING CLAIMS ETC.
- RAILWAY AND RIGHT OF WAY
- UTILITY LINES
- NON-PERENNIAL STREAM
- FLOODING OR FLOODING RIGHTS
- SUBDIVISION OF COMPOSITE PLAN
- RESERVATIONS
- ORIGINAL SHORELINE
- MARSH OR MUSKEG
- MINES
- TRAVESE MONUMENT

**DISPOSITION OF CROWN LANDS**

TYPE OF DOCUMENT	SYMBOL
PATENT, SURFACE & MINING RIGHTS	•
SURFACE RIGHTS ONLY	○
MINING RIGHTS ONLY	◐
LEASE, SURFACE & MINING RIGHTS	◑
SURFACE RIGHTS ONLY	◒
MINING RIGHTS ONLY	◓
LICENCE OF OCCUPATION	◔
RESERVATION	◕
CANCELLED	◖
SAND & GRAVEL	◗
LAND USE PERMITS FOR COMMERCIAL TOURISM/OUTPOST	◘
NOTE: MINING RIGHTS IN PARCELS PATENTED PRIOR TO 1913, VESTED IN ORIGINAL PATENTEE BY THE MINING LANDS ACT, R.S.O. 1970, CHAP. 380, SEC. 23, SUBSEC. 1	



**AREA**  
**DURER LAKE**  
 M.N.R. ADMINISTRATIVE DISTRICT  
**GÉRALDTON**  
 MINING DIVISION  
**THUNDER BAY**  
 LAND TITLES / REGISTRY DIVISION  
**THUNDER BAY**



Ministry of Land Administration and Planning  
 Ontario  
 Date: JULY 27, 1981  
 Number: G-228

Terrier Lake Area - 429



EXHIBIT B

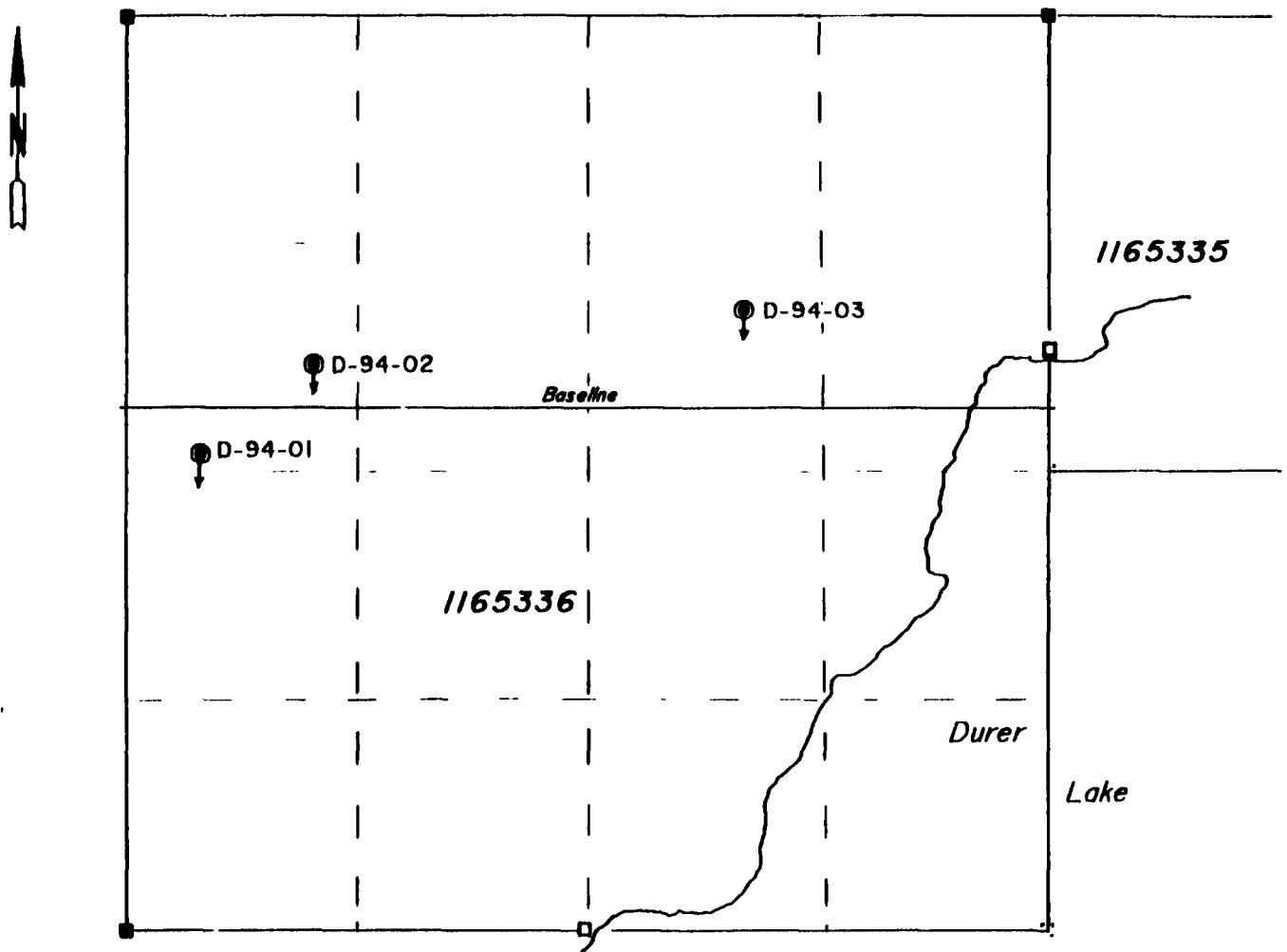
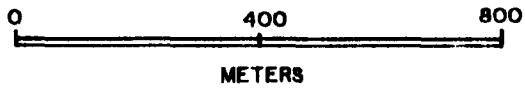


FIGURE 7

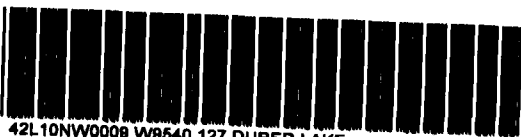
JILBEY EXPLORATION LTD.  
DURER LAKE PROPERTY  
THUNDER BAY MINING DISTRICT  
  
DIAMOND DRILL HOLE LOCATION

BY: NORWIN GEOLOGICAL LTD.  
SCALE: 1 : 1250

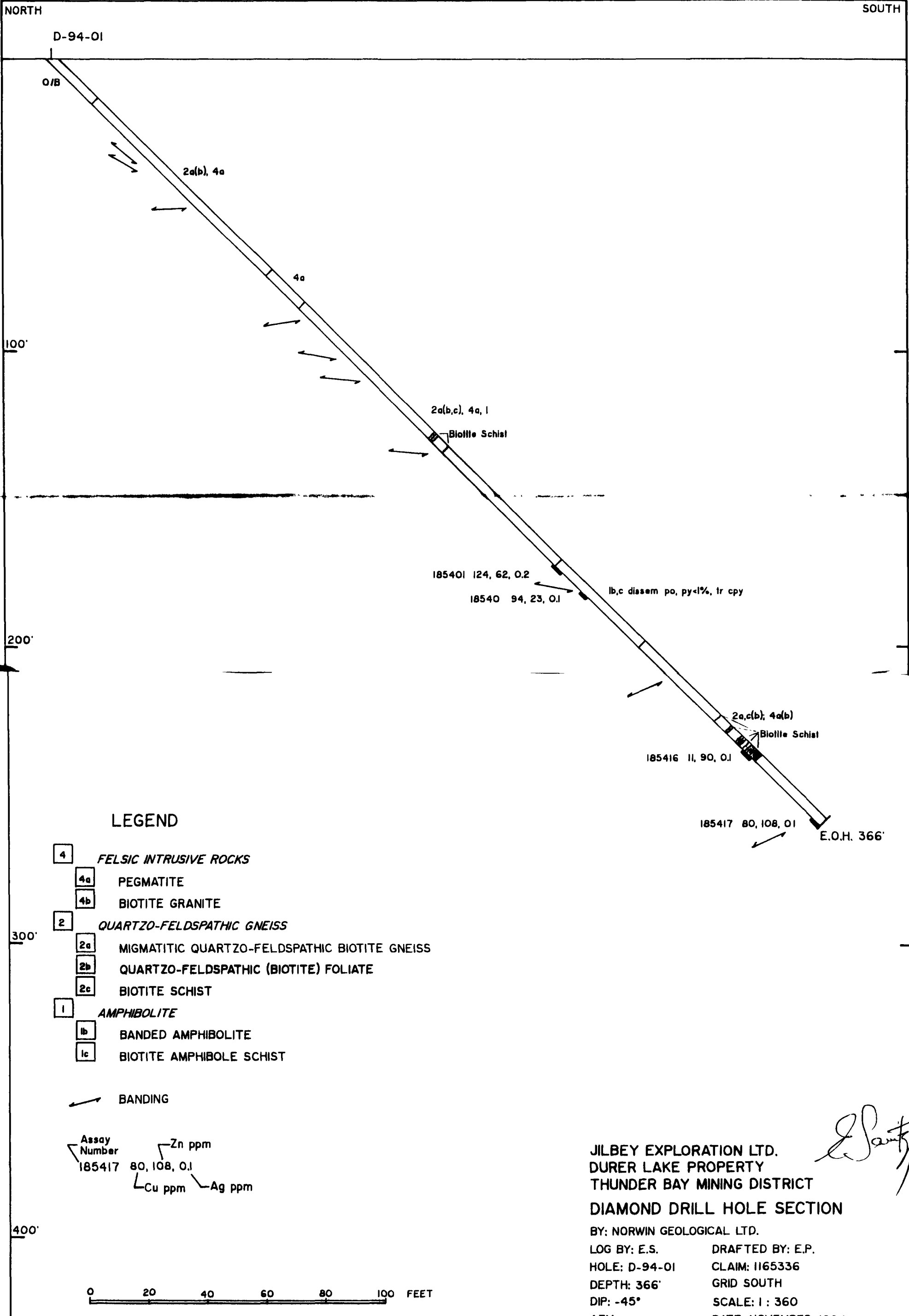


DATE: NOVEMBER, 1994

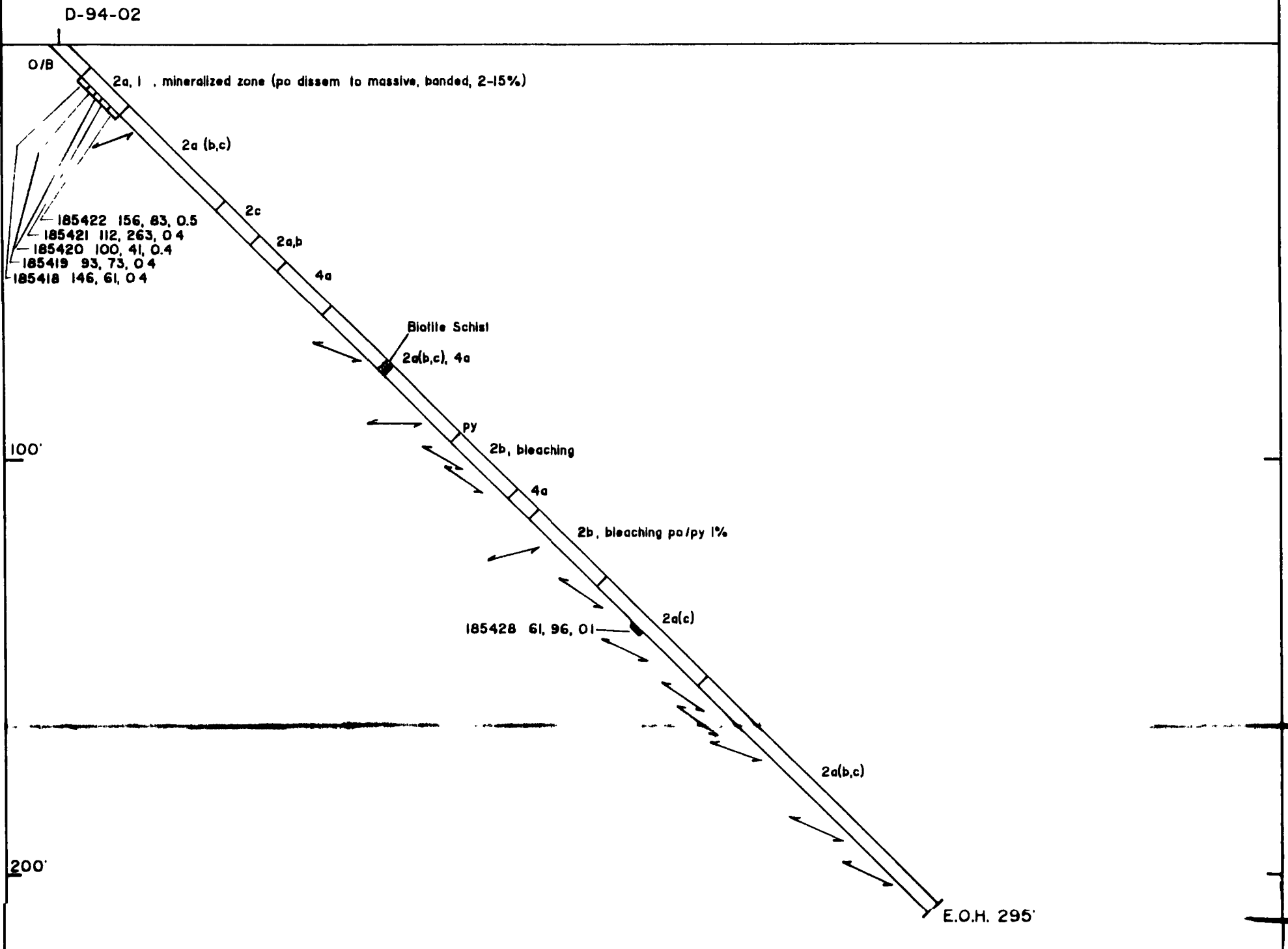
A handwritten signature in cursive script, likely 'J. Sawtelle', written over the date.







42L10NW0009 W8640 127 DURER LAKE



LEGEND

- 4 FELSIC INTRUSIVE ROCKS
  - 4a PEGMATITE
  - 4b BIOTITE GRANITE
- 2 QUARTZO-FELDSPATHIC GNEISS
  - 2a MIGMATITIC QUARTZO-FELDSPATHIC BIOTITE GNEISS
  - 2b QUARTZO-FELDSPATHIC (BIOTITE) FOLIATE
  - 2c BIOTITE SCHIST
- 1 AMPHIBOLITE
  - 1b BANDED AMPHIBOLITE
  - 1c BIOTITE AMPHIBOLE SCHIST

← BANDING

Assay Number    Zn ppm  
 185418    11, 90, 0.4  
           Cu ppm    Ag ppm

0    20    40    60    80    100 FEET

JILBEY EXPLORATION LTD.  
 DURER LAKE PROPERTY  
 THUNDER BAY MINING DISTRICT  
 DIAMOND DRILL HOLE SECTION

BY: NORWIN GEOLOGICAL LTD.  
 LOG BY: E.S.                      DRAFTED BY: E.P.  
 HOLE: D-94-02                  CLAIM: 1165336  
 DEPTH: 295'                      GRID SOUTH  
 DIP: -45°                          SCALE: 1 : 360  
 AZM:                                  DATE: NOVEMBER, 1994



42L10NW0008 W06540 127 DURER LAKE

D-94-03

O/B

2b sl sil po/py cl

2b wk sil

2b sl sil

185434 50, 108, 0.1

po/cpy (minor)

2b(c)

Biotite Schist

4a

2b

2b bx, shear, sil, po/py cl

185438 32, 372, 0.1

2a,c

2a(b), 4a

4a, 2a

Fault

2a

E.O.H. 402'

### LEGEND

- 4 FELSIC INTRUSIVE ROCKS
  - 4a PEGMATITE
  - 4b BIOTITE GRANITE
- 2 QUARTZO-FELDSPATHIC GNEISS
  - 2a MIGMATITIC QUARTZO-FELDSPATHIC BIOTITE GNEISS
  - 2b QUARTZO-FELDSPATHIC (BIOTITE) FOLIATE
  - 2c BIOTITE SCHIST
- 1 AMPHIBOLITE
  - 1b BANDED AMPHIBOLITE
  - 1c BIOTITE AMPHIBOLE SCHIST
- BANDING
- sil Silicified
- wk weak
- sl strong

Assay Number 185401  
 Zn ppm 124, 62, 0.2  
 Cu ppm Ag ppm

100'

200'

300'

400'

0 20 40 60 80 100 FEET

JILBEY EXPLORATION LTD.  
 DURER LAKE PROPERTY  
 THUNDER BAY MINING DISTRICT  
 DIAMOND DRILL HOLE SECTION

BY: NORWIN GEOLOGICAL LTD.  
 LOG BY: E.S. DRAFTED BY: E.P.  
 HOLE: D-94-03 CLAIM: 1165336  
 DEPTH: 402' GRID SOUTH  
 DIP: -60° SCALE: 1 : 360  
 AZM: DATE: NOVEMBER, 1994

