



42M12SE0002 16 VEEKAY LAKE

010

DIAMOND DRILLING

AREA: VEEKAY LAKE

REPORT NO: 16

WORK PERFORMED FOR: Goldpost Resources Inc.

RECORDED HOLDER: Same as Above [xx]
: Other []

<u>Claim No.</u>	<u>Hole No.</u>	<u>Footage</u>	<u>Date</u>	<u>Note</u>
582446	88-1	161.5'	Aug/88	(1)
	88-2	276'	Aug/88	(1)
	88-3	285.2'	Aug/88	(1)
	88-4	306'	Aug/88	(1)
	88-5	340'	Aug/88	(1)
	88-6	176'	Aug/88	(1)
	88-7	271'	Aug/88	(1)
	88-8	394'	Aug/88	(1)
	88-9	416'	Aug/88	(1)
582442	88-10	356'	Aug/88	(1)
582439	88-11	576'	Aug/88	(1)
582446	88-12	246'	Aug/88	(1)
	88-13	130'	Aug/88	(1)
	88-14	250'	Aug/88	(1)
	88-15	160.6'	Aug/88	(1)

NOTES: (1) W8904.138, date filed June/89

COMPANY GOLDPOST RESOURCES	TWP. OR AREA VEEKAY	NTS	HOLE NO.
PROPERTY RESERVE CREEK	CLAIM NO: 582446	42M/12	88-1
LOCATION (19 : GRID): SAME SET-UP AS 82-1 1426N/8+50E		COLLAR ELEV: _____ DATUM: _____	

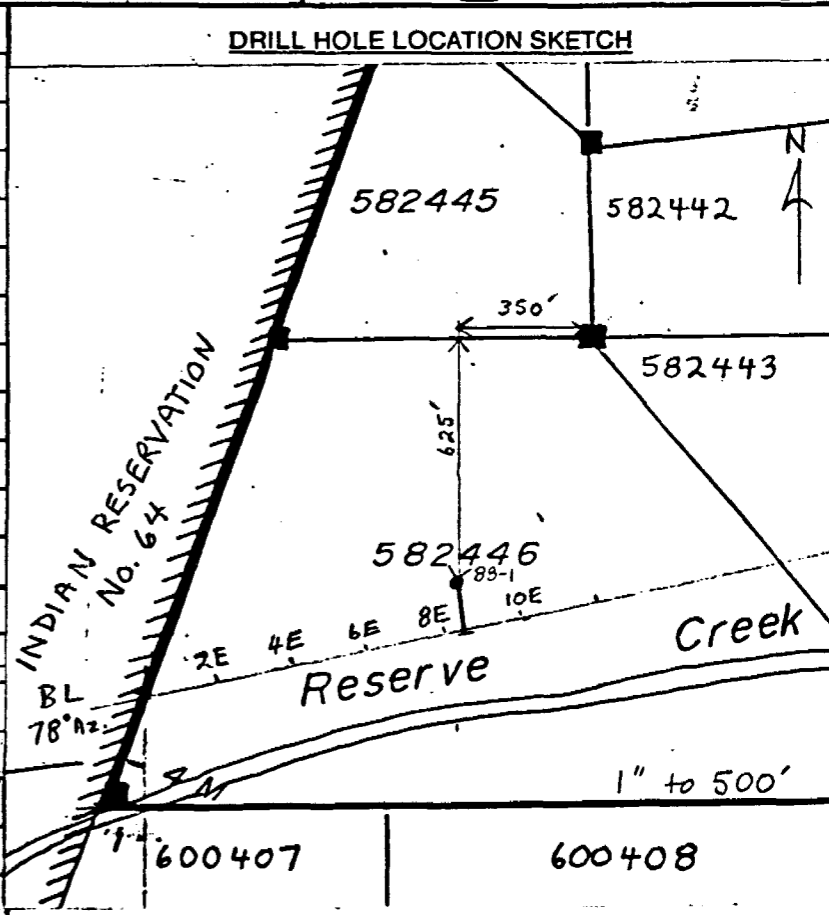
LAT. _____	LONG. _____	UTM: ZONE _____	E'g _____	N'g _____	ETCH TESTS:	AZIMUTH: 168°
DATES DRILLED: From AUG. 8/88		To AUG. 9		19 88	DEPTH: _____	DIP @ COLLAR: 35°
DRILLED BY: HEATH + SHERWOOD				20'	43°	35°
ASSAYS BY: ACCURASSAY LAB				161'	37°	29°
OVERBURDEN: CASING LENGTH 20 feet		VERT. DEPTH _____				FINAL LENGTH: 161.5 feet
CASING DRILLED:		SHOE BITS USED:				VERT. DEPTH: _____
CASING RECOVERED:		SHOE BITS RECOVERED:				HORIZ. REACH: 136'
DESCRIPTION OF OVERBURDEN:						CORE SIZE: BQ
						CORE DIAM: _____
						SURFACE <input checked="" type="checkbox"/> UNDERGROUND <input type="checkbox"/>

WATER SOURCE: RESERVE CREEK	LENGTH OF WATERLINE: _____
DRILL CUTTINGS COLLECTED? <input checked="" type="checkbox"/> Yes <input type="checkbox"/> No <input type="checkbox"/> Partial. (List samples and results on assay page.)	
CORE RECOVERY: _____ % (List intervals & % of poor recovery.)	
SPECIAL DRILLING PROCEDURES:	
DRILL COLLAR MARKED BY:	
If casing left in place, will the hole pump sufficient water for drilling?	
PURPOSE OF THIS HOLE: TEST ZONE A	
RESULTS:	
COMMENTS: CORE SAMPLED 55'-142.5'	

ONTARIO GEOLOGICAL SURVEY
ASSESSMENT FILES
OFFICE

APR 5 1989

RECEIVED



LOGGED BY: C. HORNER	SIGNATURE: <i>C. Horner</i>	DATE: Aug 11/88	PAGE ONE OF 4	HOLE NO. 88-1
-----------------------------	-----------------------------	------------------------	----------------------	----------------------

DIAMOND DRILL RECORD

79-112.5

Mineralogy, Shearing, Foliation
Mt., Veining, Contacts, Ect.

CHECKLIST: Colour, Grain & Fragment Sizes, Texture,
Brecciation, Alteration, Py, Po, B.M.,

82-1

FOOTAGE		DESCRIPTION
FROM	TO	
0	20.4	Casing
20.4	35	Foliated Basalt grading to a chlorite-carbonate schist, numerous calcite veinlets parallel to foliation planes, foliation 60° C.A., non-magnetic
35	149	Basalt - less foliated & less carbonate than above, several quartz veinlets up to 2" wide, generally 70° C.A., becomes magnetic at 54' feet, disseminated magnetite xls up to 1/16" diam. from 54' in appearance of sulphides, pyrite and pyrrhotite increasing with depth.
	63.5-63.9	Silicified zone 3% py, po
	64.2-64.4	Qtz veinlet
	66.3-68	Qtz vein - blebs and veinlets of py, minor po, contains some wallrock lower contact 70° C.A.
	79-80.3	7% anhedral po, py; 2 episodes calcite veinlets, bedding of veinlets

Sulphide appear at 54'

Sulphide zone 79-112.5

DIAMOND DRILL RECORD

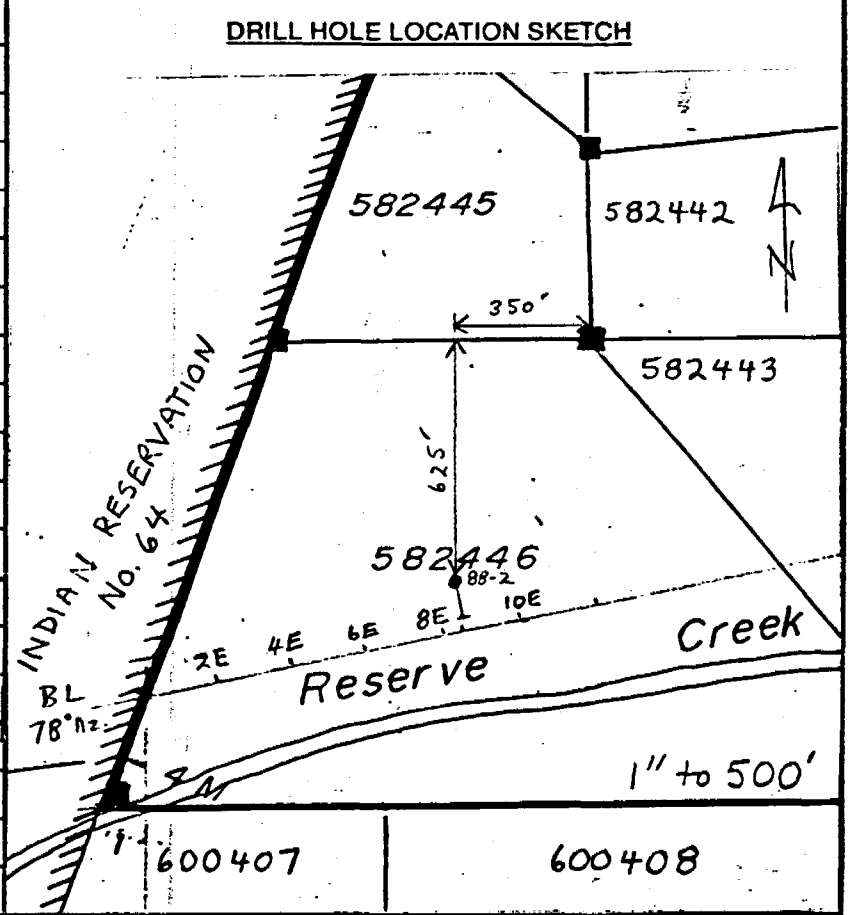
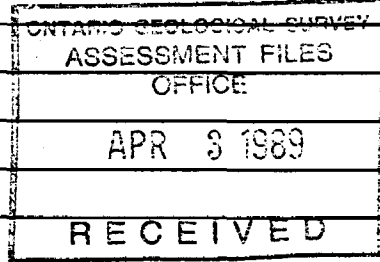
Mineralogy, Shearing, Foliation
Mt. Veining, Contacts, Ect.

CHECKLIST: Colour, Grain & Fragment Sizes, Texture,
Brecciation, Alteration, Py, Po, B.M.,

FOOTAGE		DESCRIPTION	88-1
FROM	TO		
		82-93.6 15-20% euhedral, dissem. py, po @ 83' smoky grey qtz a white calcite 0.4' wide @ 85.3 2 cracks VG in py	
		93.6-95 top to 15% dissem. magnetite 20% sulph	
		96-96.9 massive po in py, faulted 6	
		100.7-101.6 15% euhedral to subhedral po in qtz - calcite veinlets 6	
		102.6-108.5 15% to 20% py and po 102.6-105 siliceous (40% calcite?) @ 105.6 po in py	
		@ 108.4 VG @ 108.5 massive po in py 60°C:A 1" wide	
		111-112.3 5% po, py	
		127.5-127.9 Qcv	
		128.3-128.7 Qtz veinlets	
		131.1-131.5 Fissile, vuggy fracture zone 55°C:A	
		131.8-133.5 Same as above euhedral zone	

COMPANY GOLDPOST RESOURCES		TWP. OR AREA VEEKAY	NTS	HOLE NO.
PROPERTY RESERVE CREEK		CLAIM NO: 582446	42M/12	88-2
LOCATION (19 GRID): SAME SET-UP AS 82-1 1426N/8+50E		COLLAR ELEV:	DATUM:	
LAT.	LONG.	UTM: ZONE	E'g	N'g
DATES DRILLED: From AUG. 9		To AUG. 10		, 19 88
DRILLED BY: HEATH + SHERWOOD		DEPTH:	ETCHED:	CORRECTED:
ASSAYS BY: ACCURASSAY		10'	75°	70°
OVERBURDEN: CASING LENGTH		VERT. DEPTH	AZIMUTH: 168°	
CASING DRILLED:		SHOE BITS USED:	DIP @ COLLAR: 70°	
CASING RECOVERED:		SHOE BITS RECOVERED:	FINAL LENGTH: 276°	
DESCRIPTION OF OVERBURDEN:		HORIZ. REACH: 94'		CORE SIZE: 3Q
		CORE DIAM:		SURFACE <input checked="" type="checkbox"/> UNDERGROUND <input type="checkbox"/>

WATER SOURCE: RESERVE CREEK	LENGTH OF WATERLINE:
DRILL CUTTINGS COLLECTED? <input checked="" type="checkbox"/> Yes <input type="checkbox"/> No <input type="checkbox"/> Partial. (List samples and results on assay page.)	
CORE RECOVERY: % (List intervals & % of poor recovery.)	
SPECIAL DRILLING PROCEDURES:	
DRILL COLLAR MARKED BY:	
If casing left in place, will the hole pump sufficient water for drilling?	
PURPOSE OF THIS HOLE: TEST ZONE A	
RESULTS:	
COMMENTS: CORE SAMPLED 111'-251'	
259'-274'	



LOGGED BY: C. HORNER	SIGNATURE: <i>C. Horner</i>	DATE: Aug 13/88	PAGE ONE OF 4	HOLE NO. 88-2
-----------------------------	-----------------------------	------------------------	----------------------	----------------------

DIAMOND DRILL RECORD

88-2

Mineralogy, Shearing, Foliation
Mt. Veining, Contacts, Ect.

CHECKLIST: Colour, Grain & Fragment Sizes, Texture,
Brecciation, Alteration, Py, Po, B.M.,

FOOTAGE		DESCRIPTION
FROM	TO	
0	9.4	Casing
9.4		Foliated Basalt - medium green f-g, abundant calcite veinlets parallel to foliation 22°-32° C.A., non-magnetic several quartz veinlets, minor fractures infilled w/ calcite @ 12.5 Calcite-oxidole band, 40° C.A. trace sulphides
		@ 12.5
		112.5 Rock becomes darker green magnetic, scattered magnetite x lls.
		@ 114.4 Qtz vein, 25° C.A., contains Hbls of 'ny' x lls, up to 2" wide
		@ 117 Qtz veinlets, minor sulphides, 35° C.A.
		127.5 Increasing sulphides, incr. calcite, qtz veinlets
		131.3-132 Breccia zone, calcite infilling, 2% sulphides.

Sulphide
zone

127.5 -

DIAMOND DRILL RECORD

88-2

Mineralogy, Shearing, Foliation
Mt. Veining, Contacts, Ect.

CHECKLIST: Colour, Grain & Fragment Sizes, Texture,
Brecciation, Alteration, Py, Po, B.M.,

FOOTAGE		DESCRIPTION
FROM	TO	
		@ 139 Qtz vein, 25% massive py, po, foliation at upper contact 40° C.A. foliation at lower contact 20° C.A., av contact to 80° C.A.
		@ 144 Qzv, 15-20% po py 147.4-153.5 up to 15% sulphides predom. rhyolite - mod. py, abundant qtz + calcite veinlets 45°-25° C.A. 151.2-151.9 Qtz vein, 5% py
		158-159 Qtz veinlets, 10-15% py, some po
		162-165 Qtz + calcite veinlets 5-10% py, po
		169.6-196.3 Zones of Qtz + calcite veinlets, po + py, 5-10% sulphides 186.8-190 py, po, qzv py, po
		205.4-207 10% py, po, some silicified calcite veinlets
210.1		Basalt fragment. Darker in color than above non-magmatic, abundant calcite veinlets, abundant, banded, foliation 40° C.A.

DIAMOND DRILL RECORD

88-2

Mineralogy, Shearing, Foliation
Mt. Veening, Contacts, Etc.

CHECKLIST: Colour, Grain & Fragment Sizes, Texture,
Brecciation, Alteration, Py. Po. B.M.,

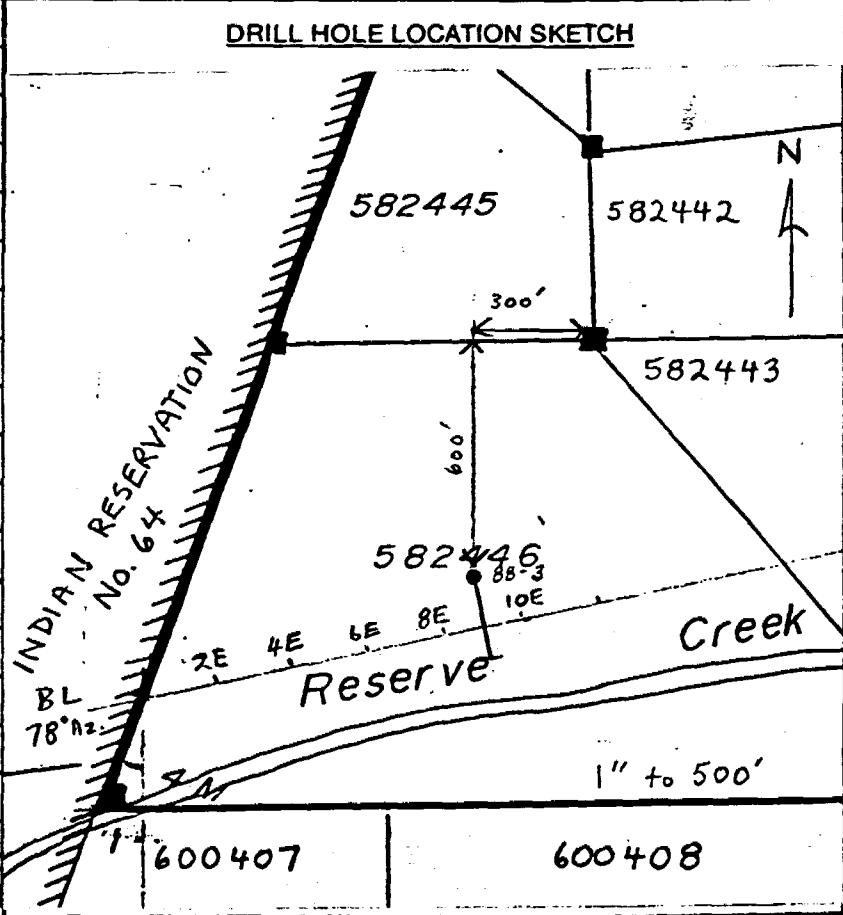
FOOTAGE		DESCRIPTION
FROM	TO	
		213.5 - 214.1 Zone q.v., 1% po
		226.5 - 227.5 zone of q.v + cv, up to 1% po, py @ 226.5, ^{5% py at 226.5}
		243.2 - 244.6 White to grey Qtz vein contains some volcanic fragments, calcite, 5% clusters of black tourmaline crystals, 1% peach coloured mineral scheelite?
		264.8 - 268 White Qtz vein some calcite, less than 1% sulph. po, py, tr, apy, volc. fragments lower 5" is mixture of epidote calcite + Qtz, sulphides, upper contact vein 60° C.A.
		269 - 271 Zone of calcite veinlets, minor po
		276' E.O.H

COMPANY GOLDPOST RESOURCES TWP. OR AREA VEEKAY NTS 42M/12 HOLE NO. 88-3
 PROPERTY RESERVE CREEK CLAIM NO: 582446
 LOCATION (19 GRID): 1+29N/9+00E COLLAR ELEV: DATUM:

LAT. LONG. UTM: ZONE E'g N'g ETCH TESTS: AZIMUTH: 168°
 DATES DRILLED: From AUG. 10 To AUG. 11, 1988 DEPTH: 20' ETCHED: 53° CORRECTED: 45° DIP @ COLLAR: 45°
 DRILLED BY: ASSAYS BY: 270' 44° 36° FINAL LENGTH: 285.2 feet
 OVERBURDEN: CASING LENGTH VERT. DEPTH HORIZ. REACH: 213'
 CASING DRILLED: SHOE BITS USED: CORE SIZE: 8Q
 CASING RECOVERED: SHOE BITS RECOVERED: CORE DIAM:
 DESCRIPTION OF OVERBURDEN: SURFACE UNDERGROUND

WATER SOURCE: RESERVE CREEK LENGTH OF WATERLINE:
 DRILL CUTTINGS COLLECTED? Yes No Partial. (List samples and results on assay page.) TO 135'
 CORE RECOVERY: % (List intervals & % of poor recovery.)
 SPECIAL DRILLING PROCEDURES:
 DRILL COLLAR MARKED BY:
 If casing left in place, will the hole pump sufficient water for drilling?
 PURPOSE OF THIS HOLE: TEST A-ZONE
 RESULTS:
 COMMENTS: CORE SAMPLED 55'-135'
210'-215'
257.5'-285.2'

ONTARIO GEOLOGICAL SURVEY
 ASSESSMENT FILES
 OFFICE
 APR 3 1989
 RECEIVED



LOGGED BY: C. HORNER SIGNATURE: [Signature] DATE: Aug 15/88 PAGE ONE OF 4 HOLE NO. 88-3

DIAMOND DRILL RECORD

88-3

Mineralogy, Shearing, Foliation
Mt. Veining, Contacts, Ect.

CHECKLIST: Colour, Grain & Fragment Sizes, Texture,
Gneissification, Alteration, Py, Po, B.M.,

FOOTAGE		DESCRIPTION
FROM	TO	
0	21	Casing
21	55.3	Foliated Basalt - medium green, foliated, abundant calcite and quartz veinlets parallel to foliation 60° C.A. non-magnetic, scattered patches of hb xls. up to 1/16" long
55.3	115.7	Magnetic Sulphide Zone - dark grey to greenish, magnetic scattered magnetite xls, small quartz veinlets, numerous calcite veinlets, varying amounts of py + po @ 55.9 Qtz veinlet, 5% po, py, 2" wide 57.2-57.9 Zone of Qtz veinlets, 3% po @ 60.4 Qtz veinlet, some streaks of biotite, 1" wide @ 63 Qtz veinlet, grey, 5% po, py 0.2 ft wide @ 69 Chlorite band, 1/4" wide, 65° C.A. contains some "acid hard" mineral, grey metallic

DIAMOND DRILL RECORD

88-3

Mineralogy, Shearing, Foliation
Mt, Veining, Contacts, Ect.

CHECKLIST: Colour, Grain & Fragment Sizes, Texture,
Brecciation, Alteration, Py, Po, B.M.,

FOOTAGE		DESCRIPTION
FROM	TO	
		@ 76.2 Qtz vein 55° C.A., 0.2' wide 2% po, py, streak of biotite
		@ 78.4 Blade biotite dikes? Lamprophy 3" wide, 50° C.A., minor sulphides
		@ 80.7 QLV, 5% po, py 2" wide
		86-90.6 up to 10% po, py
		92-8-93.3 Green qtz vein, 25%-30% massive po, py
		93.3-94.1 up to 70% dissemin. py, po
		@ 100 Green qtz vein, 3/4" wide, 20° C.A. chloritic boundaries, 3% po, py
		102-102.8 Veinlet massive po, py, qtz, alk?, 1/4" wide, 20° C.A.
		107.2-115.3 up to 15% py, po 104.5-104.8 zone calc - qtz veinlets, 15% sulpho
115.7	225.6	Foliated ls. matrix - granular - green, streaked calcite veinlets, commonly folded, occasional qtz veinlets commonly contain 1-2% sulphides
		129.7-130 QLV, chl. streaks, 5% sulpho, 1% rd-bn hem? blebs, 2
		@ 132 QLV, minor sulphides, 2" wide
		@ 134.2 QLV, minor sulphides, 3" wide 60°

DIAMOND DRILL RECORD

883

Mineralogy, Shearing, Foliation
Mt, Veining, Contacts, Ect.

CHECKLIST: Colour, Grain & Fragment Sizes, Texture,
Brecciation, Alteration, Py, Po, B, M.

FOOTAGE		DESCRIPTION
FROM	TO	
		@ 192 Qv, 3" wide, 60° C.A.
		212-213.4 Zinc of quartz and calcite veinlets, 3% py, ps
225.6	236.6	Diabasic Basalt - dark green, medium grained, massive, non-magnetic
236.6	285.2	Foliated Basalt - medium to dark green, foliation not as well defined as previous, some 80° C.A., some mafic matrix, carbonatization prevalent, minor sulphides
		258.8-259.2 White qtz vein, black streaks, pos. tremaline, 1% sulphide
		268.5-269 White qtz vein, less than 1% sulphides
		@ 284 Qtz veinlet, up to 1" wide, 7% black nodules of tremaline? (L.L.?)
		285.2 E.O.H.

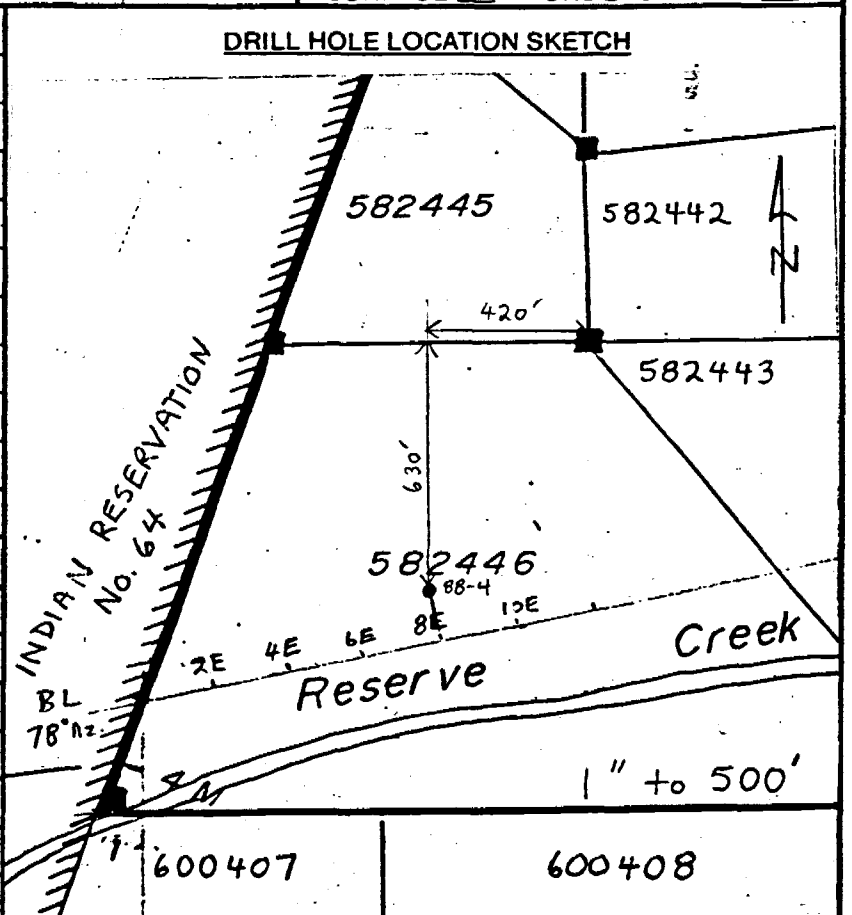
88-4

COMPANY GOLDPOST RESOURCES	TWP. OR AREA VEEKAY	NTS	HOLE NO.
PROPERTY RESERVE CREEK	CLAIM NO: 582446	42M/12	88-4
LOCATION (19 GRID): 142744N / 8400E	COLLAR ELEV:	DATUM:	

LAT.	LONG.	UTM: ZONE	E'g	N'g	ETCH TESTS:	AZIMUTH: 168°	
DATES DRILLED: From AUG. 11	To AUG. 12	1988		DEPTH:	ETCHED:	CORRECTED:	
DRILLED BY:				6'	77°	72°	
ASSAYS BY:				286'	76°	71°	
OVERBURDEN: CASING LENGTH	VERT. DEPTH					HORIZ. REACH: 88'	
CASING DRILLED:	SHOE BITS USED:					CORE SIZE: BQ	
CASING RECOVERED:	SHOE BITS RECOVERED:					CORE DIAM:	
DESCRIPTION OF OVERBURDEN:						SURFACE <input checked="" type="checkbox"/>	UNDERGROUND <input type="checkbox"/>

WATER SOURCE: RESERVE CREEK	LENGTH OF WATERLINE:
DRILL CUTTINGS COLLECTED? <input checked="" type="checkbox"/> Yes <input type="checkbox"/> No <input type="checkbox"/> Partial. (List samples and results on assay page.)	
CORE RECOVERY: % (List intervals & % of poor recovery.)	
SPECIAL DRILLING PROCEDURES:	
DRILL COLLAR MARKED BY:	
If casing left in place, will the hole pump sufficient water for drilling?	
PURPOSE OF THIS HOLE: TEST ZONE A	
RESULTS:	
COMMENTS: CORE SAMPLED 124'-236.7'	
274.5'-278.5'	

ONTARIO GEOLOGICAL SURVEY
ASSESSMENT FILES
OFFICE
APR 3 1989
RECEIVED



LOGGED BY: C. HORNER	SIGNATURE: <i>C. Horner</i>	DATE: Aug. 16/88	PAGE ONE OF 3	HOLE NO. 88-4
-----------------------------	-----------------------------	-------------------------	----------------------	----------------------

DIAMOND DRILL RECORD

88-4

Mineralogy, Shearing, Foliation
Mt, Veining, Contacts, Ect.

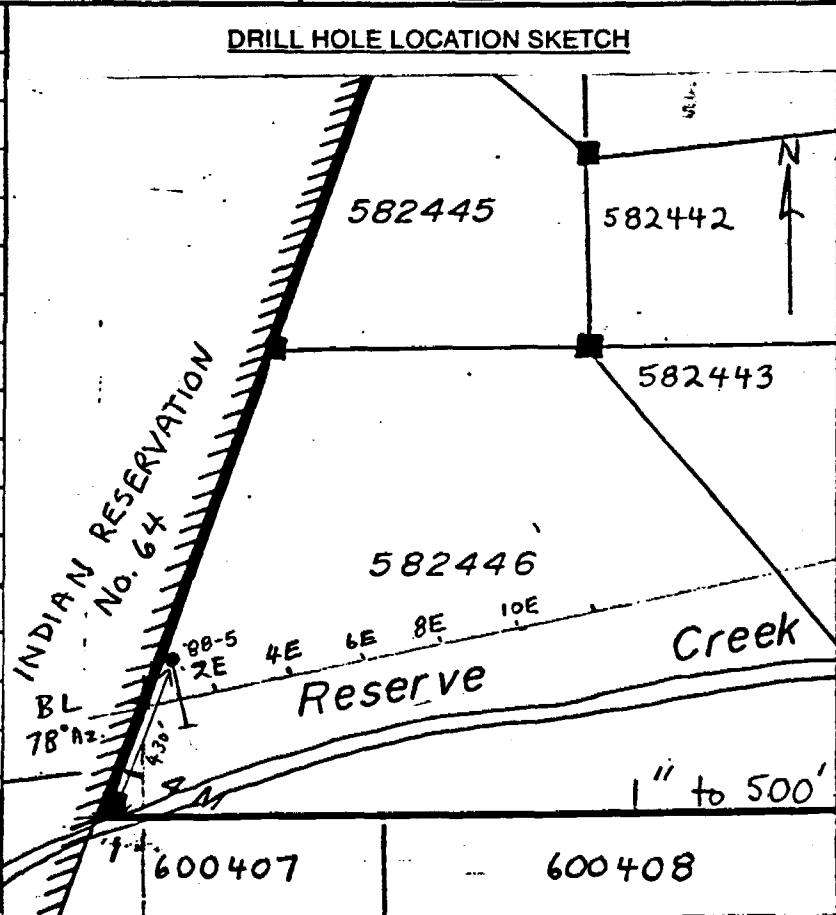
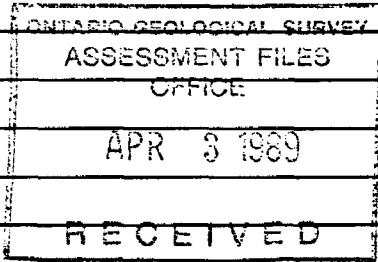
CHECKLIST: Colour, Grain & Fragment Sizes, Texture,
Brecciation, Alteration, Py, Po, B.M.,

FOOTAGE		DESCRIPTION
FROM	TO	
0	6	Casing
6	127.3	Foliated Basalt - medium green, f-g, scattered hls crystals, non-magnetic, abundant calcite veinlets, foliation 25° C.A., a few Qtz veinlets @ 125.8 QcV, 15° C.A., 2" wide, minor sulph.
127.3	233.7	Magnetic Sulphide Zone - dark grey to greenish, scattered magnetite xls, Qtz veins common, numerous calcite veinlets, foliation varies 25° to 40° C.A., varying amounts of po and py
	204-204.3	Massive po, py, some c-g biotite
	202.5 - 204.6	Coarse calcite sheaves + biotite containing rounded siliceous fragments & aggregates of massive po po py
	@ 181.3	Massive po, veinlet 1/4" wide
	183.4 - 185.9	10-15% po, py @ 184.1 - 184.4 calcite veining

COMPANY GOLDPOST RESOURCES		TWP. OR AREA VEEKAY	NTS	HOLE NO.
PROPERTY RESERVE CREEK		CLAIM NO: 582446	42M/12	88-5
LOCATION (1988 GRID): 1400N/1400E		COLLAR ELEV: _____ DATUM: _____		

LAT. _____	LONG. _____	UTM: ZONE _____	E'g _____	N'g _____	ETCH TESTS: _____	AZIMUTH: 168°	
DATES DRILLED: From AUG. 12 To AUG. 13 , 19 88				DEPTH: 40'	ETCHED: 65°	CORRECTED: 58°	DIP @ COLLAR: 60°
DRILLED BY: _____				330'	66°	59°	FINAL LENGTH: 340'
ASSAYS BY: _____							VERT. DEPTH: _____
OVERBURDEN: CASING LENGTH _____		VERT. DEPTH _____					HORIZ. REACH: 175'
CASING DRILLED: _____			SHOE BITS USED: _____			CORE SIZE: BQ	
CASING RECOVERED: _____			SHOE BITS RECOVERED: _____			CORE DIAM: _____	
DESCRIPTION OF OVERBURDEN: _____						SURFACE <input checked="" type="checkbox"/> UNDERGROUND <input type="checkbox"/>	

WATER SOURCE: RESERVE CREEK		LENGTH OF WATERLINE: _____
DRILL CUTTINGS COLLECTED? <input type="checkbox"/> Yes <input type="checkbox"/> No <input checked="" type="checkbox"/> Partial. (List samples and results on assay page.) 36-106'		
CORE RECOVERY: _____ % (List intervals & % of poor recovery.)		
SPECIAL DRILLING PROCEDURES: _____		
DRILL COLLAR MARKED BY: _____		
If casing left in place, will the hole pump sufficient water for drilling? _____		
PURPOSE OF THIS HOLE: TEST ZONE B		
RESULTS: _____		
COMMENTS: CORE SAMPLED 71'-75' 106'-316'		



LOGGED BY: C. HORNER	SIGNATURE: <i>[Signature]</i>	DATE: Aug. 18/88	PAGE ONE OF 3+2A	HOLE NO. 88-5
-----------------------------	-------------------------------	-------------------------	-------------------------	----------------------

DIAMOND DRILL RECORD

88-5

Mineralogy, Shearing, Foliation
Mt. Veining, Contacts, Ect.

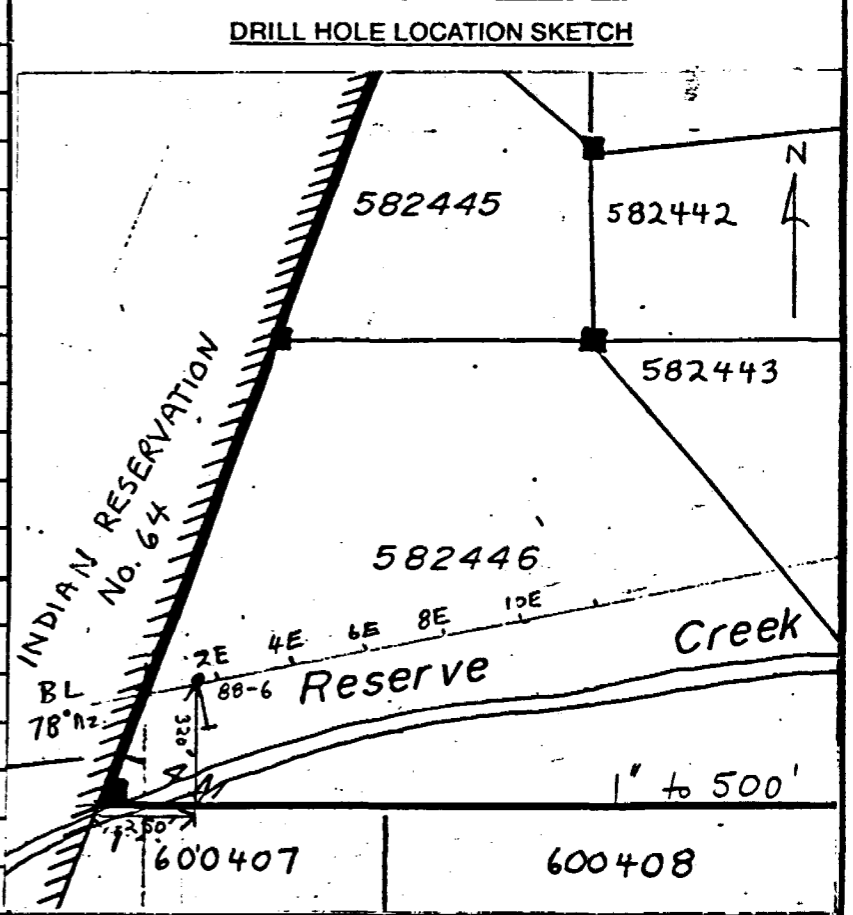
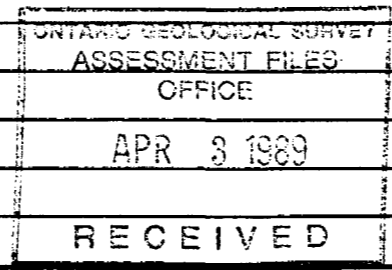
CHECKLIST: Colour, Grain, & Fragment Sizes, Texture,
Brecciation, Alteration, Py. Po., B.M.

FOOTAGE		DESCRIPTION
FROM	TO	
0	37	Casing
37	234	Foliated Basalt - medium green f-g, foliated, non-magnetic, abundant calcite veinlets, 30-40% several qtz veinlets
		72.5-73.5 White qtz vein, contains 1% greenish to milky coloured mineral.
		182.2-182.8 Rubbly zone
		183.5-184.5 Rubbly zone
		220.7-221.2 White qtz vein.
234	311.3	Magnetic Sulfide Zone - dark grey to brownish, magnetic, scattered magnetite xlls, several qtz veinlets, several calcite veinlets, arsenite, some antimonial thos. 'A' zone, may be associated with qtz, calcite veinlets or silicified zones.

88-6

COMPANY GOLDPOST RESOURCES				TWP. OR AREA VEE KEY		NTS	HOLE NO.
PROPERTY RESERVE CREEK				CLAIM NO: 582446		42M/12	88-6
LOCATION (19 GRID): 0+00N/1+50E				COLLAR ELEV:		DATUM:	
LAT.	LONG.	UTM: ZONE	E'g	N'g	ETCH TESTS:		AZIMUTH: 168°
DATES DRILLED: From AUG. 13 To AUG. 13 , 19 88				DEPTH:	ETCHED:	CORRECTED:	DIP @ COLLAR: 50°
DRILLED BY:				20'	58°	50°	FINAL LENGTH: 176'
ASSAYS BY:				160'	55°	47°	VERT. DEPTH:
OVERBURDEN: CASING LENGTH		VERT. DEPTH					HORIZ. REACH: 116'
CASING DRILLED:			SHOE BITS USED:			CORE SIZE: BQ	
CASING RECOVERED:			SHOE BITS RECOVERED:			CORE DIAM:	
DESCRIPTION OF OVERBURDEN:						SURFACE <input checked="" type="checkbox"/> UNDERGROUND <input type="checkbox"/>	

WATER SOURCE: RESERVE CREEK		LENGTH OF WATERLINE:
DRILL CUTTINGS COLLECTED? <input type="checkbox"/> Yes <input type="checkbox"/> No <input checked="" type="checkbox"/> Partial. (List samples and results on assay page.) 16-126'		
CORE RECOVERY: % (List intervals & % of poor recovery.)		
SPECIAL DRILLING PROCEDURES:		
DRILL COLLAR MARKED BY:		
If casing left in place, will the hole pump sufficient water for drilling?		
PURPOSE OF THIS HOLE: TEST ZONE B		
RESULTS:		
COMMENTS: CORE SAMPLED 41'-176'		



LOGGED BY: C. HORNER	SIGNATURE: <i>[Signature]</i>	DATE: Aug 19/1988	PAGE ONE OF 3	HOLE NO. 88-6
-----------------------------	-------------------------------	--------------------------	----------------------	----------------------

DIAMOND DRILL RECORD

88-6

Mineralogy, Shearing, Foliation
Mt, Veining, Contacts, Ect.

CHECKLIST: Colour, Grain & Fragment Sizes, Texture,
Brecciation, Alteration, Py, Po, B.M.,

FOOTAGE		DESCRIPTION
FROM	TO	
0	20.2	Casing
20.2	45.8	Foliated Basalt - medium green, f-g, scattered hornblende xlls, non-magnetic, numerous calcite veinlets & few quartz veinlets, foliation 55° C.A.
45.8	136.2	Magnetic Sulfide Zone - dark green, f-c magnetic, several calcite & qtz veinlets, scattered magnetite xlls. Warning amount of py & po. 0 0
74.2	79.4	10-15% po, py, several qcv @ 77.2 VG in qcv
79.5	91	Bands of euhedral py, up to 15%, truncation of bands 50° C.A. at 87.2 QV, 0.2' wide streaks of biotite, 2% py, specks of VG
108.5	108.9	QV, 2% po, 50° C.A.
120.5	126.2	Zones with up to 15% po, py, + inc. qcv
127.2	129.7	Bands of euhedral py, some po up to 15% subhedral
*	128-128.5	QV, 3% blebs of po + f-g dissem. py, speck VG
	80-80.7	5% sulph.
	81-83.5	10% po, py abundant + qcv

QV
similar
to QV in
849

DIAMOND DRILL RECORD

88-6

Mineralogy, Shearing, Foliation
Mt. Veining, Contacts, Ect.

CHECKLIST: Colour, Grain & Fragment Size, Texture,
Brecciation, Alteration, Py. Po. B.M.

FOOTAGE		DESCRIPTION
FROM	TO	
136.2	176	Foliated Basalt - medium to light green, scattered hornblende crystals, non-magnetic to weakly magnetic, numerous calcite veinlets, trace sulphides, foliation 50-60° C.A.
		142-142.7 Qv. 2% sulphides
		142.7-145.5 Zone of abundant calcite veinlets, at least 2 episodes of veining, 1 episode has been folded
		146-148 Zone of abundant calcite and quartz-calcite veinlets, at least 2 episodes of veining, some folding up to 1% sulphides
		@ 154 Zone of qcv, 2 1/2" wide
		169.4-169.6 Zone of qcv
		@ 174.4 Qcv, tr. sulphide, 1/2" wide
		176' E.O.M.

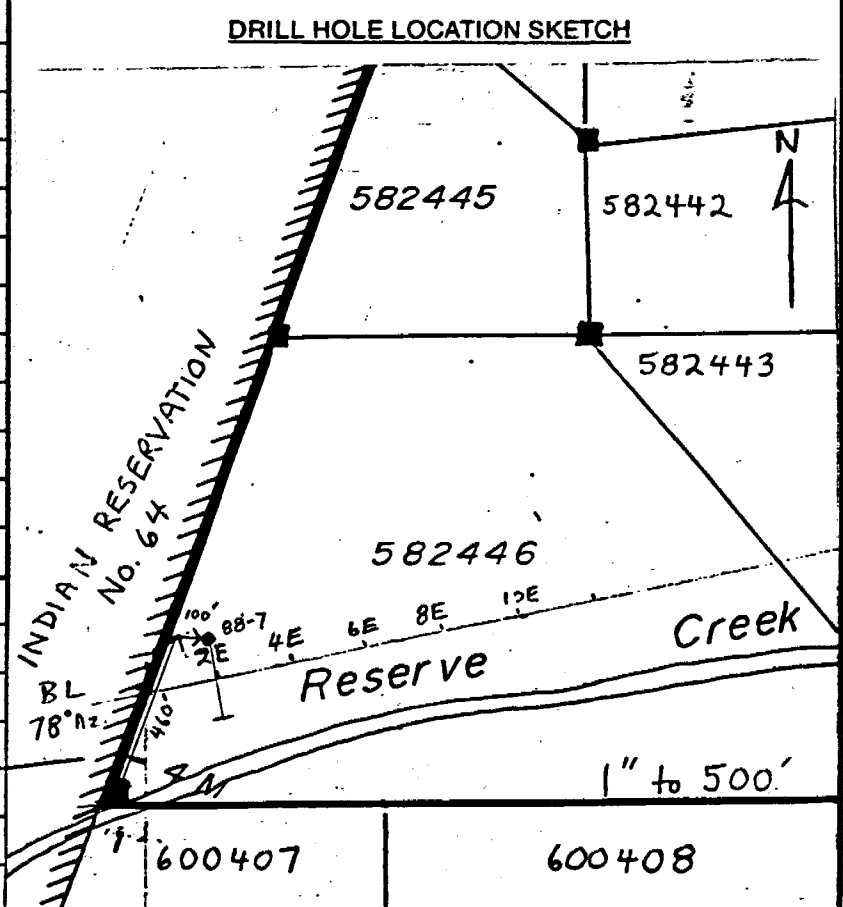
U COMPANY **GOLDPOST RESOURCES** TWP. OR AREA **VEEKAY** NTS HOLE NO.
 PROPERTY **RESERVE CREEK** CLAIM NO: **582446** **42M/12** **88-7**
 LOCATION (1983 GRID): **1+00N/2+00E** COLLAR ELEV: DATUM:

LAT. LONG. UTM: ZONE E'g N'g ETCH TESTS: AZIMUTH: **168°**
 DATES DRILLED: From **AUG. 14** To **AUG. 14**, 19**88** DEPTH: ETCHED: CORRECTED: DIP @ COLLAR: **45°**
 DRILLED BY: **261** **45°** **37°** FINAL LENGTH: **271'**
 ASSAYS BY: VERT. DEPTH:
 OVERBURDEN: CASING LENGTH VERT. DEPTH HORIZ. REACH: **201 ft**
 CASING DRILLED: SHOE BITS USED: CORE SIZE: **BQ**
 CASING RECOVERED: SHOE BITS RECOVERED: CORE DIAM:
 DESCRIPTION OF OVERBURDEN: SURFACE UNDERGROUND

WATER SOURCE: **RESERVE CREEK** LENGTH OF WATERLINE:
 DRILL CUTTINGS COLLECTED? Yes No Partial. (List samples and results on assay page.) **16-116**
 CORE RECOVERY: % (List intervals & % of poor recovery.)
 SPECIAL DRILLING PROCEDURES:
 DRILL COLLAR MARKED BY:

If casing left in place, will the hole pump sufficient water for drilling?
 PURPOSE OF THIS HOLE: **TEST ZONE B**
 RESULTS:
 COMMENTS: **CORE SAMPLED 50.5'-53.5'**
114'-117'
128.5'-133.5'
145'-231.4'

ONTARIO GEOLOGICAL SURVEY
 ASSESSMENT FILES
 OFFICE
 APR 9 1989
 RECEIVED



LOGGED BY: **C. HORNER** SIGNATURE: *C. Horner* DATE: **Aug 21, 1988** PAGE ONE OF **3** HOLE NO. **88-7**

DIAMOND DRILL RECORD

88-7

Mineralogy, Shearing, Foliation
Mt. Veiling, Contacts, Ect.

CHECKLIST: Colour, Grain & Fragment Sizes, Texture,
Brecciation, Alteration, Py, Po, B.M.

FOOTAGE		DESCRIPTION
FROM	TO	
0	19.8	Casing
19.8	148.4	Foliated Basalt - medium green, f-c scattered hls xlls, abundant white veinlets, a few qtz veinlets, non-magnetic, foliation 50°-60° C.A.
		51.7-52.1 Qv, <1% sulphides, streaks of chlorite
		@ 85.2 Qv, 1" wide 55° C.A. tr. py
		115.3-115.7 Qv, rusty stain, trace py in adjacent wall rock, 70° C.A.
		131-131.6 White qtz vein, 1% po, py near lower contact, upper contact 50° C.A. lower contact 60° C.A.
148.4	220.4	Magnetic Sulphide Zone - dark grey, f-c strongly magnetic, scattered magnetite xlls, numerous calcite and quartz veinlets, varying amounts of po + py
		161-163 - 10% po, py
		170.3-172.8 Zone of quartz veins with coarse euhedral py and large anhedral

88-9

DIAMOND DRILL RECORD

88-7

Mineralogy, Shearing, Foliation
Mt. Veining, Contacts, Ect.

CHECKLIST: Colour, Grain & Fragment Sizes, Texture,
Brecciation, Alteration, Py, Po, B. M.,

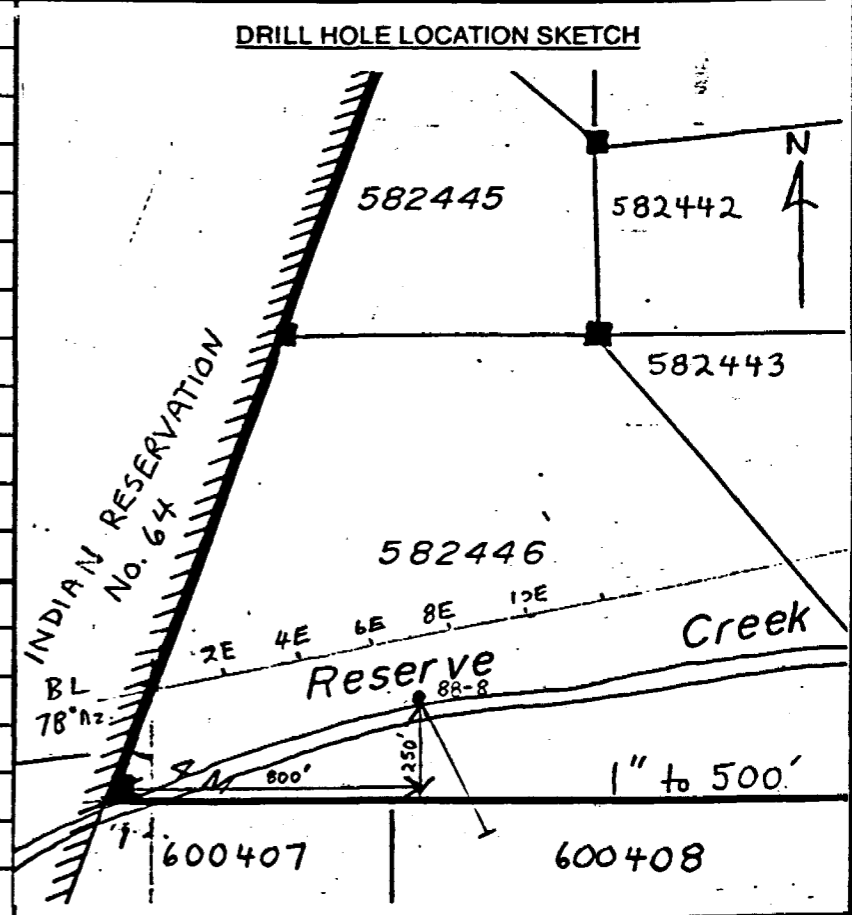
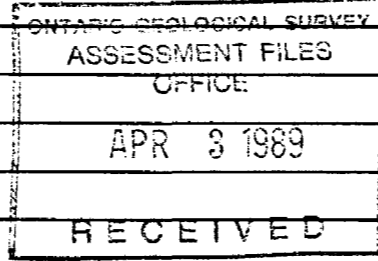
FOOTAGE		DESCRIPTION
FROM	TO	
		blebs of po, 10-15% sulphides
		173.7-175.2 White + grey quartz, edges of biotite, streaked of chlorite, 5% zo. py; upper contact 10° C.A., lower contact 15° C.A. with 1/8" wide band of py.
		@ 213.8 Band of anhedral c.a. py, anhedral po, + white quartz, 1/4" wide, 85° C.A., 5 specks of VG in the quartz, elongated gold grains up to 1/32" long.
		@ 214.1 Band of anhedral py, anhedral po & quartz, up to 1/2" wide, 50° C.A.
220.4	271	Foliated Basalt - medium green, f-g with hb xls, abundant calcite minerals, several quartz minerals mostly non-magnetic, minor sulphides, foliation 60°-65° C.A.
		228.5-231.4 Strongly magnetic, scattered magnetite xls.
		271' E.O.H.

88-8

COMPANY GOLDPOST RESOURCES		TWP. OR AREA VEEKAY	NTS	HOLE NO.
PROPERTY RESERVE CREEK		CLAIM NO: 582446	42 M/12	88-8
LOCATION (19 GRID): North edge of Reserve CK.		COLLAR ELEV: DATUM:		

LAT.	LONG.	UTM: ZONE	E'g	N'g	ETCH TESTS:	AZIMUTH: 153° az.		
DATES DRILLED: From AUG. 15		To AUG. 16		, 19 88	DEPTH: ETCHED: CORRECTED:	DIP @ COLLAR: 45°		
DRILLED BY: HEATH + SHERWOOD					200'	46°	38°	FINAL LENGTH: 505'
ASSAYS BY: ACCURASSAY					492'	40°	32°	VERT. DEPTH:
OVERBURDEN: CASING LENGTH		VERT. DEPTH					HORIZ. REACH: 394'	
CASING DRILLED:			SHOE BITS USED:			CORE SIZE: B Q		
CASING RECOVERED:			SHOE BITS RECOVERED:			CORE DIAM:		
DESCRIPTION OF OVERBURDEN:						SURFACE <input checked="" type="checkbox"/> UNDERGROUND <input type="checkbox"/>		

WATER SOURCE: RESERVE CREEK		LENGTH OF WATERLINE:
DRILL CUTTINGS COLLECTED? <input type="checkbox"/> Yes <input type="checkbox"/> No <input checked="" type="checkbox"/> Partial. (List samples and results on assay page.)		35'-85'
CORE RECOVERY: % (List intervals & % of poor recovery.)		
SPECIAL DRILLING PROCEDURES:		
DRILL COLLAR MARKED BY:		
If casing left in place, will the hole pump sufficient water for drilling?		
PURPOSE OF THIS HOLE: TEST IP ANOMALY		
RESULTS:		
COMMENTS: CORE SAMPLED 46'-49'		
66'-69'		
220'-302'		
325'-375'		
485'-505'		



LOGGED BY: C. HORNER	SIGNATURE: <i>C. Horner</i>	DATE: Aug. 23/88	PAGE ONE OF 4	HOLE NO. 88-8
----------------------	-----------------------------	------------------	---------------	---------------

DIAMOND DRILL RECORD

88-8

Mineralogy, Shearing, Foliation
Mt, Veining, Contacts, Ect.

CHECKLIST - Colour, Grain & Fragment Sizes, Texture,
Brecciation, Alteration, Py. Po. S. M. L.

FOOTAGE		DESCRIPTION
FROM	TO	
0	34.5	Casing
34.5	101.8	Carbonated Basalt - medium to dark green, strongly carbonated, chloritic, foliation 35° & 45° C.A., non-magnetic to weakly magnetic, several quartz veinlets commonly contain some py + po
		47-47.8 Qtz vein, streaks of chlorite, 2% py.
		67.7-68 Qtz vein, 3% py, streaks of chlorite, vein 40° C.A.
101.8	132.5	Diatremic textured Basalt* - dark green, medium grained, massive, spiculated, carbonated, a few calcite veinlets
132.5	158	Foliated, Carbonated Basalt
158	167.6	Diatremic texture Basalt - minor sulphides
167.6	505	Basalt - abundant calcite + calcite-calcite veinlets, some strongly carbonated sections
		223.7-242.8 Zone of increased calcite + at times minor sulphides, slightly magnetic

DIAMOND DRILL RECORD

88-8

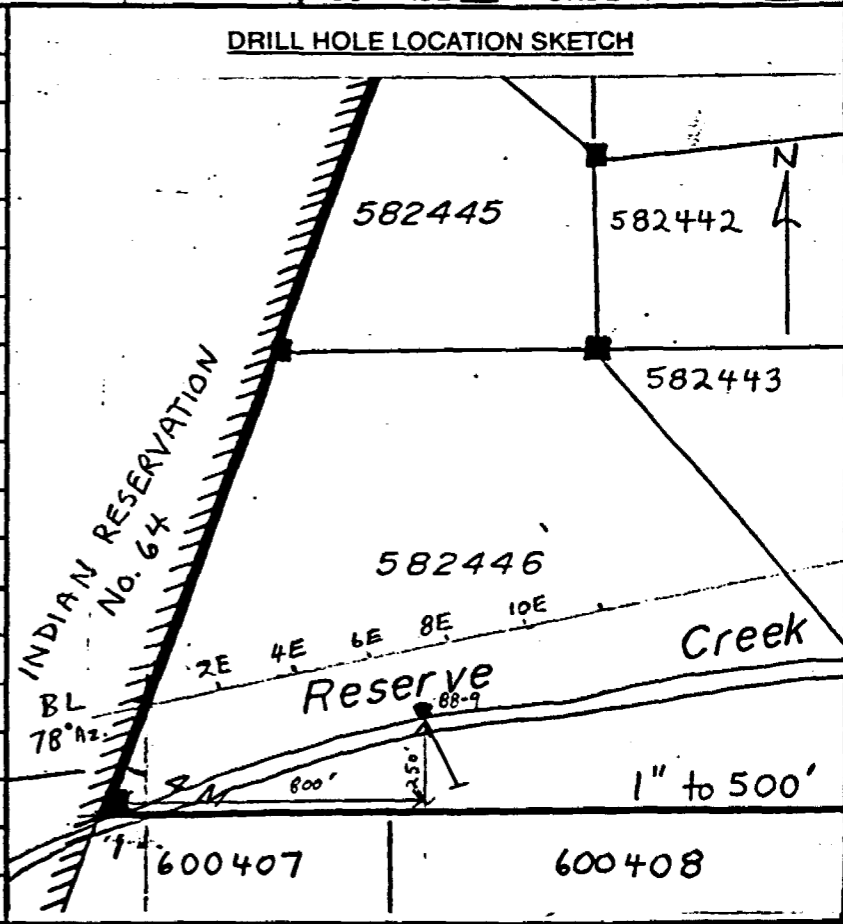
Mineralogy, Shearing, Foliation
Mt. Veining, Contacts, Ect.

CHECKLIST: Colour, Grain & Fragment Sizes, Texture,
Brecciation, Alteration, Py, Po, B.M.,

FOOTAGE		DESCRIPTION
FROM	TO	
		max. 4' rock below ad
	278.4-279.4	Qtz vein, streaks of chlorite 1% sulfides
	279.8-282.4	Qtz vein, 5% po, cpy, py streaks of chlorite
Zone	282.4-283.5	Dark green foliated zone 60° C.A. with abundant Qtz veins. The Qtz veins have been "fractured"? magnetic, 41% Fe sulfides
	299-299.4	Qtz vein, 1% po
	326.5-328	Qtz veins at low angles to C.A.
	331-331.9	White Qtz vein, barren
	335.5-336	White qv barren, 60° C.A.
	336.6-339.6	White qv., blocks of chlorite
	367.6-368.8	Qtz vein, streaks of chlorite 3% po, cpy, upper contact 35° C.A.
	460-	Probably allowed basalt and patches of hydrothermalite.

COMPANY GOLDPOST RESOURCES				TWP. OR AREA VEEKAY		NTS	HOLE NO.	
PROPERTY RESERVE CREEK				CLAIM NO: 582446		42M/12	88-9	
LOCATION (19 GRID):				COLLAR ELEV:		DATUM:		
LAT.		LONG.		UTM: ZONE		E'g	N'g	ETCH TESTS:
DATES DRILLED: From AUG. 16		To AUG. 17		. 19 88		DEPTH:	ETCHED:	CORRECTED:
DRILLED BY: HEATH + SHERWOOD				400'	61°	53°	AZIMUTH: 153° az	
ASSAYS BY: ACCURASSAY LAB							DIP @ COLLAR: 65°	
OVERBURDEN: CASING LENGTH		VERT. DEPTH					FINAL LENGTH: 416'	
CASING DRILLED:				SHOE BITS USED:				VERT. DEPTH:
CASING RECOVERED:				SHOE BITS RECOVERED:				HORIZ. REACH: 208'
DESCRIPTION OF OVERBURDEN:								CORE SIZE: 8Q
								CORE DIAM:
								SURFACE <input checked="" type="checkbox"/> UNDERGROUND <input type="checkbox"/>

WATER SOURCE: RESERVE CREEK		LENGTH OF WATERLINE:	
DRILL CUTTINGS COLLECTED? <input type="checkbox"/> Yes <input type="checkbox"/> No <input checked="" type="checkbox"/> Partial. (List samples and results on assay page.)		16' - 196'	
CORE RECOVERY: % (List intervals & % of poor recovery.)		ASSESSMENT FILES OFFICE	
SPECIAL DRILLING PROCEDURES:		APR 3 1989	
DRILL COLLAR MARKED BY:		RECEIVED	
If casing left in place, will the hole pump sufficient water for drilling?			
PURPOSE OF THIS HOLE: TEST IP ANOMALY			
RESULTS:			
COMMENTS: CORE SAMPLED			
		64'-79'	381'-414.7'
		93'-108'	
		126'-146'	
		181.5'-207.5'	
		218.5'-221.5'	
		278'-293'	
		330.2'-334.2'	



LOGGED BY: C. HORNER	SIGNATURE: <i>C. Horner</i>	DATE: Aug. 25/88	PAGE ONE OF 4	HOLE NO. 88-9
-----------------------------	-----------------------------	-------------------------	----------------------	----------------------

DIAMOND DRILL RECORD

88-9

Mineralogy, Shearing, Foliation
Mt, Veining, Contacts, Ect.

CHECKLIST: Colour, Grain & Fragment Size, Texture,
Brecciation, Alteration, Py, Po, S, M.

FOOTAGE		DESCRIPTION
FROM	TO	
0	22.2	Casing
22.2	53.9	Diabase to amphibole textured Basalt - dark green, massive, m-c-g, nm-to weakly magnetic
		25.8-27 Schistose chloritic, broken
53.9	293.3	Foliated Basalt - carbonatized, medium to dark green, slightly magnetic, minor sulphides, several qtz veins, foliation 40° C.A.
		66.4-67.4 Qtz veining
		72-72.8 Qtz vein, 40° C.A., streaks of chlorite, 3-5% po, py
		97.7-102.7 Zone of Qtz vein with calcite veining & foliated wallrock at upper and lower contacts, grey streaky qtz, up to 5% po, py, cpv, some occurs as large anhedral lvs.
		137.2-137.8 Qtz vein, <1% sulphides 35° C.A.

DIAMOND DRILL RECORD

88-9

Mineralogy, Shearing, Foliation
MI, Veining, Contacts, Ect.

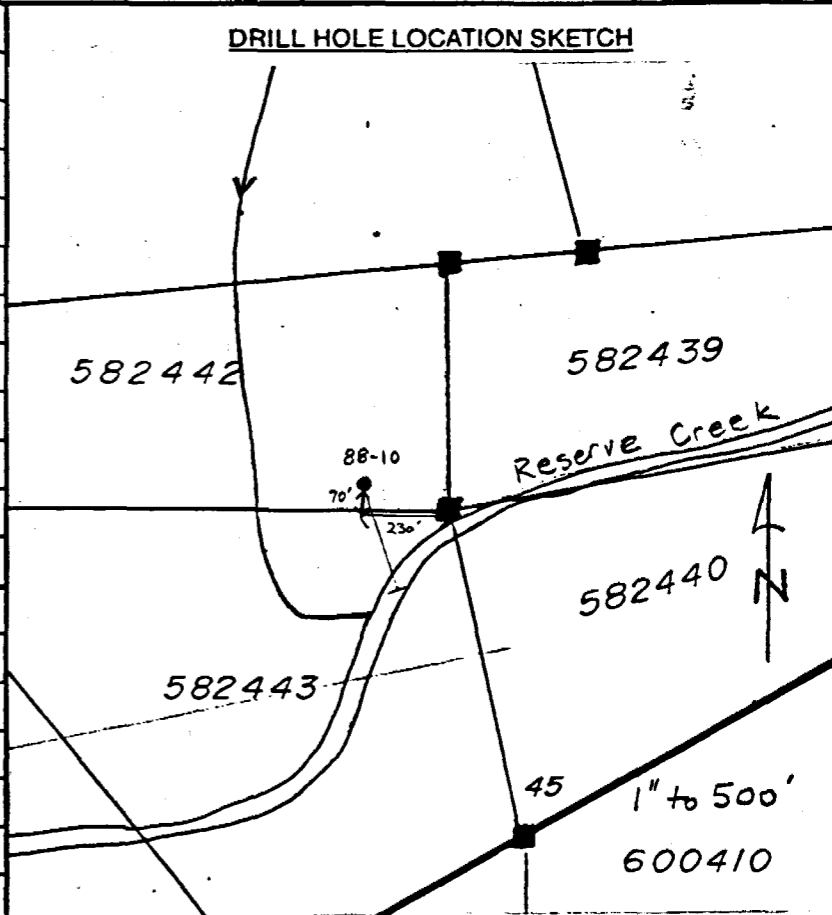
CHECKLIST: Colour, Grain & Fragment Sizes, Texture,
Brecciation, Alteration, Py, Po, B.M.

FOOTAGE		DESCRIPTION
FROM	TO	
		144.6 - 145 Qtz vein, 35°C.A. trace sulphides
	*	189 - 189.4 Qtz-calcite vein, streaks of chlorite, 10%-15% sulphides, subhedral laths of po, cov and coarse euhedral py, 40°C.A. 7 species of a soft silver metal, possibly a telluride.
		@ 202 Calcite veinlet streaks of chlorite, banks of biotite, 2" wide
		@ 203 Qtz-calcite veinlet, streaks of chlorite, banks of biotite, 1-2% po, py, cov 3" wide, 40°C.A.
		219.4 - 219.9 Calcite-biotite veinlet 1% po. 1/2" wide, 20°C.A.
		283 - 287 Qtz-chlorite-carbonate schist 20-25% C.A.
293.3	351	Massive basalt - dark green, fig, calcite & Qtz veins common
		332.1 - 332.4 Qtz vein streaks of chlorite, 3% sulphides, 55°C.A.

COMPANY GOLDPOST RESOURCES		TWP. OR AREA VEEKAY	NTS	HOLE NO.
PROPERTY RESERVE CREEK		CLAIM NO: 582442	42M/12	88-10
LOCATION (19 GRID):		COLLAR ELEV: DATUM:		

LAT.	LONG.	UTM: ZONE	E'g	N'g	ETCH TESTS:	AZIMUTH: 160° az		
DATES DRILLED: From AUG. 18		To AUG. 19		.19 88	DEPTH: ETCHED: CORRECTED:	DIP @ COLLAR: 50°		
DRILLED BY: HEATH + SHERWOOD					150'	55°	47°	FINAL LENGTH: 356'
ASSAYS BY: ACCURASSAY LAB					343	45°	37°	VERT. DEPTH:
OVERBURDEN: CASING LENGTH		VERT. DEPTH			HORIZ. REACH: 229'			
CASING DRILLED:				SHOE BITS USED:		CORE SIZE: BQ		
CASING RECOVERED:				SHOE BITS RECOVERED:		CORE DIAM:		
DESCRIPTION OF OVERBURDEN:						SURFACE <input checked="" type="checkbox"/> UNDERGROUND <input type="checkbox"/>		

WATER SOURCE: RESERVE CREEK		LENGTH OF WATERLINE:
DRILL CUTTINGS COLLECTED? <input checked="" type="checkbox"/> Yes <input type="checkbox"/> No <input type="checkbox"/> Partial. (List samples and results on assay page.)		
CORE RECOVERY: % (List intervals & % of poor recovery.)		ONTARIO GEOLOGICAL SURVEY ASSESSMENT FILES OFFICE APR 3 1989 RECEIVED
SPECIAL DRILLING PROCEDURES:		
DRILL COLLAR MARKED BY:		
If casing left in place, will the hole pump sufficient water for drilling?		
PURPOSE OF THIS HOLE: TEST ZONE H, MAG HIGH		
RESULTS:		
COMMENTS: CORE SAMPLED 96'-121'		
172'-175'		
191.4'-356'		



LOGGED BY: C. HORNER	SIGNATURE: <i>C. Horner</i>	DATE: Aug. 26/88	PAGE ONE OF 3	HOLE NO. 88-10
-----------------------------	-----------------------------	-------------------------	----------------------	-----------------------

DIAMOND DRILL RECORD

8F-10

Mineralogy, Shearing, Foliation,
Mt. Veilings, Contacts, Ect.

CHECKLIST - Colour, Grain & Fragment Sizes, Texture,
Brecciation, Alteration, Py. Po. B.M.,

FOOTAGE		DESCRIPTION
FROM	TO	
0	29.5	Casing
29.5	195	Basalt - alternating massive with foliated sections, dark to medium green, f-to-m-g, non-magnetic, numerous calcite veinlets, weathered epidote veinlets near the top of the hole, several subble sections, a few qv carbonated
		34.7-35 White, glassy qtz vein with chlorite
		82-90 Badli broken core and recovery @ 102.2 qcv, 4" to 1" wide, 1-2% sulph. 105.6-105.8 qcv, 1-2% sulph. @ 109 calcite pods, 3" wide, minor sulph.
		112.3-113.4 Zn & qv and chlorite some bx volc. fragments
		126 → mostly medium mass foliated basalt dip 70°-75° C.A.
		174.2-174.7 Qtz vein, streaks of chlorite
195	261	Magnetic zone - dark area to grey, massive to slightly foliated fl.a. several quartz veins with common containing sulphides, quartz & pyrite, some rounded sulphides common in foliation planes and fracture to base, carbonated, a few

DIAMOND DRILL RECORD

88-10

Mineralogy, Shearing, Foliation
M., Veining, Contacts, Ect.

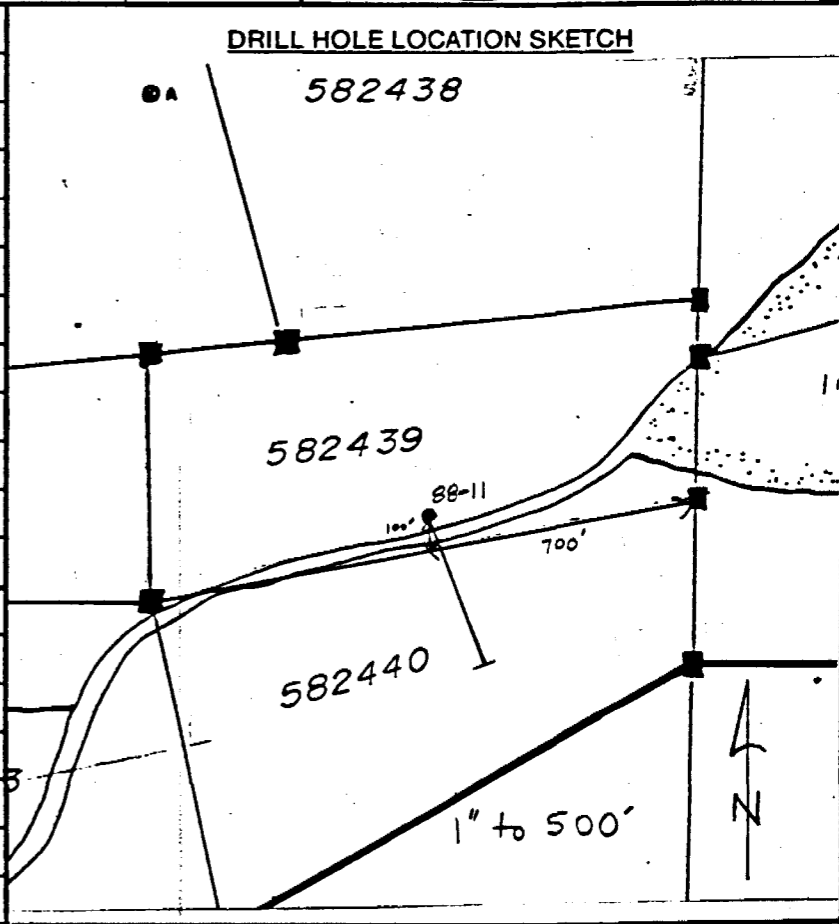
CHECKLIST - Colour, Grain & Fragment Sizes, Texture,
Brecciation, Alteration, Py. Po. B.M.,

FOOTAGE		DESCRIPTION
FROM	TO	
		scattered magnetite xls, estimate less than 5% sulphides probably average 2% sulch. in this zone
		207.9 Qc ^v 1% sulph, 5" wide @ 224 Qts, 3% sulph, 0.5' wide. 259.4-261 zone of Qv 1-2% sulph.
261	356	Foliated Basalt - medium coarse f-g, generally non-magnetic with a few slightly magnetic sections
		283.2-283.7 Qtz-calcite-albite? vein 1% anhedral inclusions of po, 40° C.A.
		307.4-308.5 Magnetic zone with quartz inclusions, 1-2% sulph, po, py
		323-323.7 Magnetic zone with quartz inclusions, 1% po.
		332.3-333 Qtz-calcite-albite? (tabular xls white, pale orange to pale green colored streaks of chlorite, 3% po, py, cny blades & needles of a dark grey, soft metallic mineral, 1-2%)
		339.5-340.1 Qtz veins, 1-2% po, cpy
		354-354.5 Qtz veinlets, trace sulphides
		356' E.O.H.

COMPANY GOLDPOST RESOURCES		TWP. OR AREA VEEKAY	NTS	HOLE NO.
PROPERTY RESERVE CREEK		CLAIM NO: 582439	42m/12	88-11
LOCATION (19 81? GRID): -4W 18+505		COLLAR ELEV: DATUM:		

LAT.	LONG.	UTM: ZONE	E'g	N'g	ETCH TESTS:	AZIMUTH: 160° 02'		
DATES DRILLED: From AUG. 19		To AUG. 22		.19 88	DEPTH: ETCHED: CORRECTED:	DIP @ COLLAR: 45°		
DRILLED BY: HEATH + SHERWOOD					566'	31°	24°	FINAL LENGTH: 576'
ASSAYS BY: ACCURASSAY LAB								VERT. DEPTH:
OVERBURDEN: CASING LENGTH		VERT. DEPTH						HORIZ. REACH: 407'
CASING DRILLED:			SHOE BITS USED:					CORE SIZE: BQ
CASING RECOVERED:			SHOE BITS RECOVERED:					CORE DIAM:
DESCRIPTION OF OVERBURDEN:								SURFACE <input checked="" type="checkbox"/> UNDERGROUND <input type="checkbox"/>

WATER SOURCE: RESERVE CREEK		LENGTH OF WATERLINE:
DRILL CUTTINGS COLLECTED? <input checked="" type="checkbox"/> Yes <input type="checkbox"/> No <input type="checkbox"/> Partial. (List samples and results on assay page.)		ONTARIO GEOLOGICAL SURVEY ASSESSMENT FILES OFFICE APR 3 1988 RECEIVED
CORE RECOVERY: % (List intervals & % of poor recovery.)		
SPECIAL DRILLING PROCEDURES:		
DRILL COLLAR MARKED BY:		
If casing left in place, will the hole pump sufficient water for drilling?		
PURPOSE OF THIS HOLE: TEST SELCO CONDUCTOR		
RESULTS:		
COMMENTS: CORE SAMPLES		
41'-56'	367.5'-546'	
84'-108.5'	562'-566'	
121'-136'		
173.5'-178.5'		
186'-196'		
296'-316'		
350'-355.5'		



LOGGED BY: C. HORNER	SIGNATURE: <i>C. Horner</i>	DATE: Aug. 25/88	PAGE ONE OF 9	HOLE NO. 88-11
-----------------------------	-----------------------------	-------------------------	----------------------	-----------------------

DIAMOND DRILL RECORD

88-11

Mineralogy, Shearing, Foliation
Mt, Veining, Contacts, Ect.

CHECKLIST - Colour, Grain & Fragment Sizes, Texture,
Brecciation, Alteration, Py. Po. B.M.

FOOTAGE		DESCRIPTION
FROM	TO	
0	22	Casing
22	233.8	Basalt - medium to dark green, generally non-magnetic, f-g, massive band. Unclotted texture, mineral Qtz veins, some ch. epidote veins, some carbonated 'sintions'
	43-48.8	Massive - no foliation. 50°C A. band of pyrite 1/8" wide
	91.4-92.1	Qtz vein, chlorite streaks, 3% po, py, cpy, traces of other c.a. brecciated contact 50°C A.
	99-101	Zinc of Qtz veining 1% silite
	102.9-104.6	Zinc of Qtz veins, chlorite streaks 3% silite
	123.4-124.4	Qtz vein streaks of chlorite
	130-131	Qtz-calcite vein streaks of chlorite, trace sulphides
	174.6-175	Qtz-albite? veining, 3% po, cpy

DIAMOND DRILL RECORD

88-11

Mineralogy, Shearing, Foliation
Mt. Veining, Contacts, Ect.

CHECKLIST: Colour, Grain & Fragment Sizes, Texture,
Brecciation, Alteration, Py. Po. B.M.

FOOTAGE		DESCRIPTION
FROM	TO	
		175.8 - 176.7 Qv, chlorite inclusions, 1-2% sulphides on py, cpy
		186.2 - 191.7 Qtz vein. pyrite core recovery (~40%), 1% po py, cpy, streaked chlorite.
		@ 191.7 QcV, 2% sulph.
		220.3 - 222.5 Galena texture @ 221.3 Qv 3" wide 1% sulph.
223.8	252.3	Medium - medium to dark green, mg matrix appearance. Some - of phosphates?, a few qv, no sulph.
252.3	267	Basalt.
267	280	Basalt - medium-grained, medium green, carbonatized
280	308	Tuff? - dark green, f-g, 10% elutriated white fragments up to 1" long, some scattered sulphides

DIAMOND DRILL RECORD

88-11

Mineralogy, Shearing, Foliation
Mt. Veining, Contacts, Ect.

CHECKLIST: Colour, Grain & Fragment Sizes, Texture,
Brecciation, Alteration, Py. Po., B.M.,

FOOTAGE		DESCRIPTION
FROM	TO	
		300-300.3 Qtz blocks
		301.4-306.7 Qtz vein, streaks of chlorite, minor sulphides, upper contact 20° C.A., lower contact 30° C.A.
308	311.7	Basalts - medium-grained, medium to light green, mottled appearance asteroid phenocrysts? or fragments?
		308.8-312.1 Foliated 40° C.A. and some bedding with abundant calcite & some qtz veining
		322.5-323.3 Tuff? band
		323.8-324.6 Tuff? band
		340.2-343.3 Tuff? band - distinct uneven contacts
		348.8-349.9 Tuff? band
		350.7-351.2 QV, mottled & deep red colour, trace sulphides

DIAMOND DRILL RECORD

88-11

Mineralogy, Shearing, Foliation
Mt. Veiling, Contacts, Ect.

CHECKLIST: Colour, Grain & Fragment Sizes, Texture,
Brecciation, Alteration, Py. Po., B. M.,

FOOTAGE		DESCRIPTION
FROM	TO	
		352.8-353.6 Tuff: band + band of py @ 353.3 1/4" wide
		@ 361.8 Red auriferous veinlet + calcite veinlet, 10° C.A.: 1/4" wide
371.7	403.2	Sueshvide Zone - dark green, f.g., foliated to massive, bands of py. can cut in, cut to 10% sulphide foliation 70° C.A.
		384.7-388 2" dia. veinlet 1/8" in diam. 385.3-386.2 Garnet schist
		399-399.3 15%-20% Granite or mafic? black, with mineral in it, 1/8" V black, dark, massive as before, 1/8" diam.
		395.7-403.2 Dimpleed granular schist in massive tuff, schistose 10° up to 6° 1/8" in diam. dark green, f.g. matrix
403.2	405.6	Dimpled schist
405.6	422	Foliated 70° C.A. @ 410.4 Qv, 2" wide, 1% sulph.

DIAMOND DRILL RECORD

88-11

Mineralogy, Shearing, Foliation
Mt. Veining, Contacts, Ect.

CHECKLIST: Colour, Grain & Fragment Sizes, Texture,
Brecciation, Alteration, Py. Po. B.M.,

FOOTAGE		DESCRIPTION
FROM	TO	
422	452.2	Foliated, homogeneous? - dark green L.C. 5% white epidote phenocrysts up to 1/8" diam.
		429.6 - 430.1 Qtz vein, streaks of chlorite, minor sulph.
		432.7 - 433.4 Scattered magnetite or pyrite in matrix of epidote.
		436.4 - 437.3 Qtz vein, chlorite streaks, calcite, 65°C.A.
		439.2 - 439.9 Qtz-calcite and biotite vein, 70°C.A.
		446 - 446.5 Qtz-chlorite vein, minor sulphides, 75°C.A.
		448.8 - 449.1 Qtz-albite vein, 1% magnetite?
4522	475	Foliated 85°C.A. zone - medium green, calcitized, scattered sulphides.
		457.7 - 458.6 Scattered magnetite xlls
		463.7 - 464.5 Scattered magnetite xlls.

DIAMOND DRILL RECORD

88-11

Mineralogy, Shearing, Foliation
M., Veining, Contacts, Ect.

CHECKLIST: Colour, Grain & Fragment
Brecciation, Alteration, Py. Po. B.M.,
Sizes, Texture.

FOOTAGE		DESCRIPTION
FROM	TO	
		466-466.6 Zone of Qtz veins and 10-15% dissem. id. ch. l. mostly subh. l. pyrite
		466.7-467.4 Scattered magnetite x lls.
		467.8-469.6 Zone of Qtz veinlets & up to 10% subh. magnetite
		470.5-471.6 Zone of Qtz veining & 5% sulphides, lower contact 70°C.A.
		472.9-474 Qtz-calcite-allite-ill. vein, 1% sulph., upper contact 70°C.A., lower contact 80°C.A.
		474.7-475 Qtz-calcite-ill. vein 1% sulph. veins in at lower contact 80°C.A.
475	576	Dacite? - red-orange to grey to black coloured, ^{fairly} ^{part} ^{of} several scattered garnets up to 1/4" in diam, non-cambosized several Qtz veinlets which commonly contain chlorarsenite and incls?, scattered streaks of sulphides.

DIAMOND DRILL RECORD

88-11

Mineralogy, Shearing, Foliation
M., Veining, Contacts, Ect.

CHECKLIST: Colour, Grain & Fragment Size, Texture,
Brecciation, Alteration, Py. Po., S.M.,

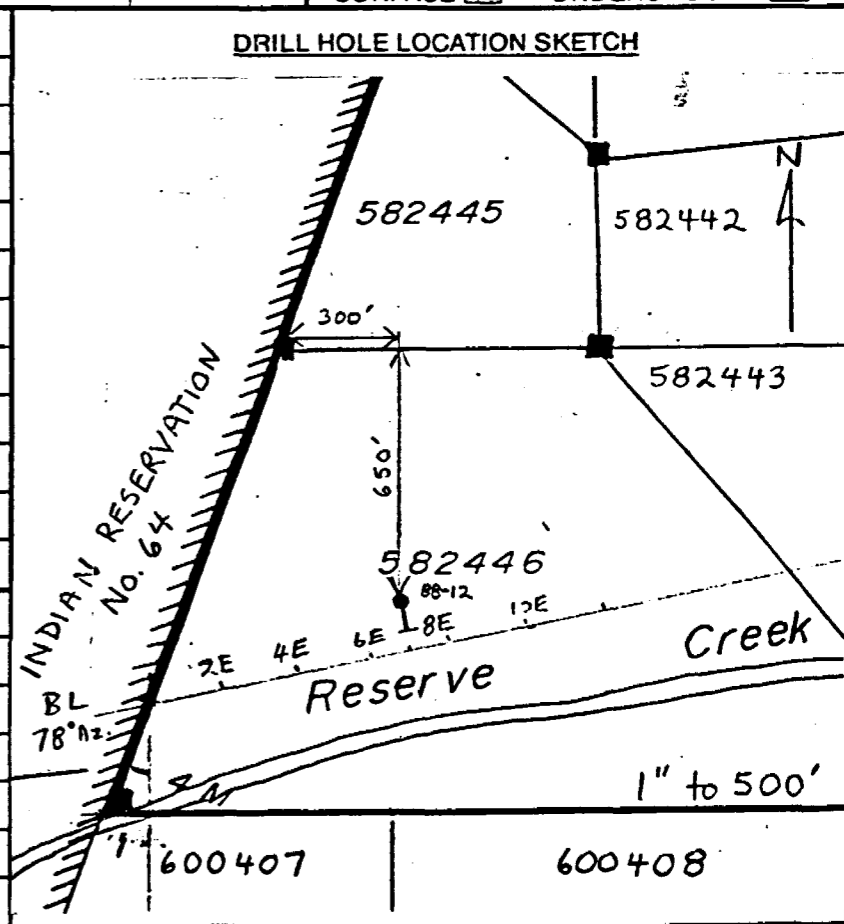
FOOTAGE		DESCRIPTION
FROM	TO	
		476.5-476.8 Broken up core
		@ 488 Av, 2" wide, 1% sulph.
		498-501.8 Pinkish-ol-green, bleached? some white, healed low carbonate, clayey near 499.6, 1/4" wide VV
		@ 510.7 brown zme, dark red colour minor sulph.
		509.7-513.7 Dark red colour a few Qtz veins, minor sulph, some subtle zones
		523.9-524.1 Qtz veinlets, cpy + moly 2%
		@ 525.3 Qtz vein, 1/2" wide, cpy + moly 3%, faulted 40° E.A. ~ 1" displacement
		528-531 up to 7% garnets, bands of cpy @ 529.5-529.7
		532.1-532.6 Qtz vein, 5-7% cpy, moly, + 1.20
		@ 533.7 Av, 1" wide 1% cpy

COMPANY **GOLDPOST RESOURCES** TWP. OR AREA **VEEKAY** NTS **42m/12** HOLE NO. **88-12**
 PROPERTY **RESERVE CREEK** CLAIM NO: **582446**
 LOCATION (19 GRID): **1721.5N / 7+00E** COLLAR ELEV: DATUM:

LAT. LONG. UTM: ZONE E'g N'g ETCH TESTS: AZIMUTH: **168°**
 DATES DRILLED: From **AUG. 22** To **AUG. 23**, 19**88** DEPTH: ETCHED: CORRECTED: DIP @ COLLAR: **70°**
 DRILLED BY: **HEATH & SHERWOOD** **233'** **80°** **76°** FINAL LENGTH: **246'**
 ASSAYS BY: **ACCURASSAY LAB.** VERT. DEPTH:
 OVERBURDEN: CASING LENGTH VERT. DEPTH HORIZ. REACH: **67'**
 CASING DRILLED: SHOE BITS USED: CORE SIZE: **BQ**
 CASING RECOVERED: SHOE BITS RECOVERED: CORE DIAM:
 DESCRIPTION OF OVERBURDEN: SURFACE UNDERGROUND

WATER SOURCE: **RESERVE CREEK** LENGTH OF WATERLINE:
 DRILL CUTTINGS COLLECTED? Yes No Partial. (List samples and results on assay page.)
 CORE RECOVERY: % (List intervals & % of poor recovery.)
 SPECIAL DRILLING PROCEDURES:
 DRILL COLLAR MARKED BY:
 If casing left in place, will the hole pump sufficient water for drilling?
 PURPOSE OF THIS HOLE:
 RESULTS:
 COMMENTS: **CORE SAMPLED 135'-246'**

ONTARIO GEOLOGICAL SURVEY
 ASSESSMENT FILES
 OFFICE
 APR 3 1989
 RECEIVED



LOGGED BY: **C. HORNER** SIGNATURE: *C. Horner* DATE: **Aug. 29/88** PAGE ONE OF 3 HOLE NO. **88-12**

DIAMOND DRILL RECORD

88-12

Mineralogy · Shearing Foliation
Mt. Veining · Contacts, Ect.

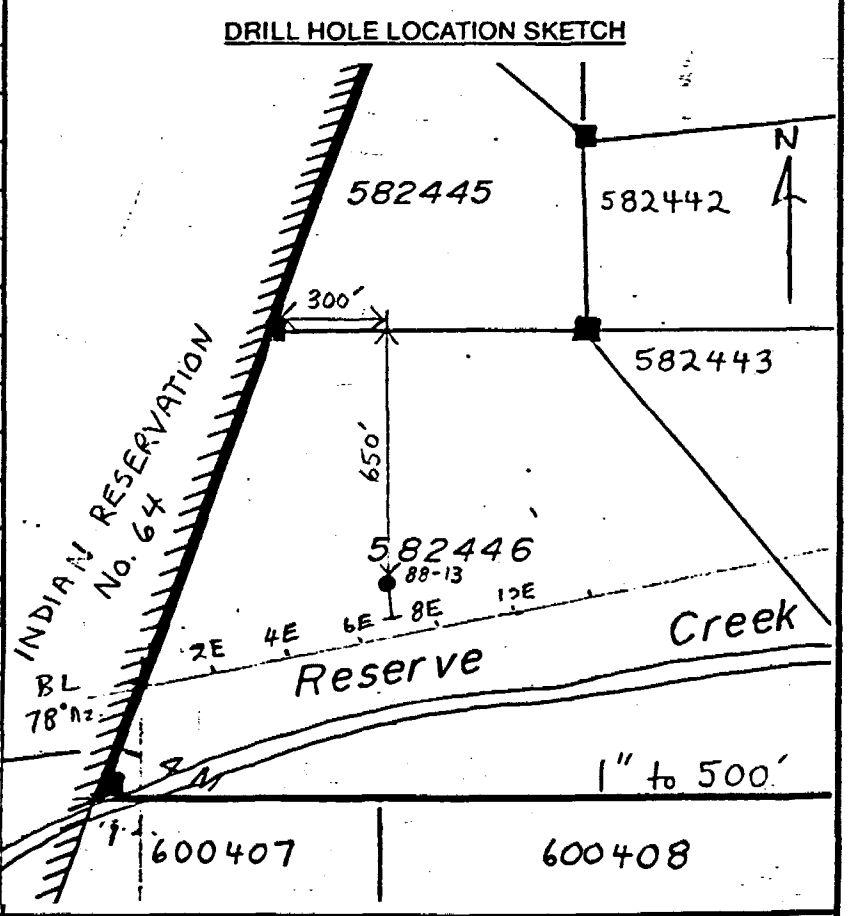
CHECKLIST · Colour Grain & Fragment Sizes, Texture,
Brecciation, Alteration, Py. Po. B.M.

FOOTAGE		DESCRIPTION
FROM	TO	
0	18.8	Casing
18.8	129	Foliated Basalt - medium green, f-a, numerous calcite ^v inlets parallel to foliation, 25°-35°C.A., 'non-magnetic', sections with hornblende xlls., chloritic
		79-79.6 Qtz-calcite vein, in calcite.
		137.6-138 Calcite inlets, 1% sulph.
139	240.2	Magnetic Sulphide Zone - dark green to green, strongly magnetic, scattered magnetite xlls., 'barren' amounts of po. py scattered throughout the zone, several calcite inlets, a few quartz inlets
		139.4-139.8 Qtz vein, minor po, 30°C.A.
		161-166 Stronaler initiated 30°C.A. light brown 'bleached' appearance, abundant quartz veining, 10% sulph.
		@167.5 Qcv, 2" wide, 30°C.A., 5% sulph.

COMPANY GOLDPOST RESOURCES	TWP. OR AREA VEEKAY	NTS	HOLE NO.
PROPERTY RESERVE CREEK	CLAIM NO: 582446	42M/12	88-13
LOCATION (19 GRID): 1421.5N/7400E	COLLAR ELEV: DATUM:		

LAT.	LONG.	UTM: ZONE	E'g	N'g	ETCH TESTS:	AZIMUTH: 168°
DATES DRILLED: From AUG. 23 To AUG. 23 , 19 88				DEPTH:	ETCHED:	CORRECTED:
DRILLED BY:				117'	50°	42°
ASSAYS BY:				FINAL LENGTH: 130'		
OVERBURDEN: CASING LENGTH				VERT. DEPTH		
CASING DRILLED:				SHOE BITS USED:		
CASING RECOVERED:				SHOE BITS RECOVERED:		
DESCRIPTION OF OVERBURDEN:				SURFACE <input checked="" type="checkbox"/> UNDERGROUND <input type="checkbox"/>		

WATER SOURCE: RESERVE CREEK	LENGTH OF WATERLINE:
DRILL CUTTINGS COLLECTED? <input checked="" type="checkbox"/> Yes <input type="checkbox"/> No <input type="checkbox"/> Partial. (List samples and results on assay page.)	<div style="border: 1px solid black; padding: 5px; text-align: center;"> ENVIRONMENTAL SURVEY ASSESSMENT FILES OFFICE APR 3 1989 RECEIVED </div>
CORE RECOVERY: % (List intervals & % of poor recovery.)	
SPECIAL DRILLING PROCEDURES:	
DRILL COLLAR MARKED BY:	
If casing left in place, will the hole pump sufficient water for drilling?	
PURPOSE OF THIS HOLE: ZONE A	
RESULTS:	
COMMENTS: CORE SAMPLED 62'-130'	



LOGGED BY: C. HORNER	SIGNATURE: <i>C. Horner</i>	DATE: Aug 29/89	PAGE ONE OF 2	HOLE NO. 88-13
-----------------------------	-----------------------------	------------------------	---------------	-----------------------

DIAMOND DRILL RECORD

88-13

Mineralogy, Shearing, Foliation
Mt. Veining, Contacts, Ect.

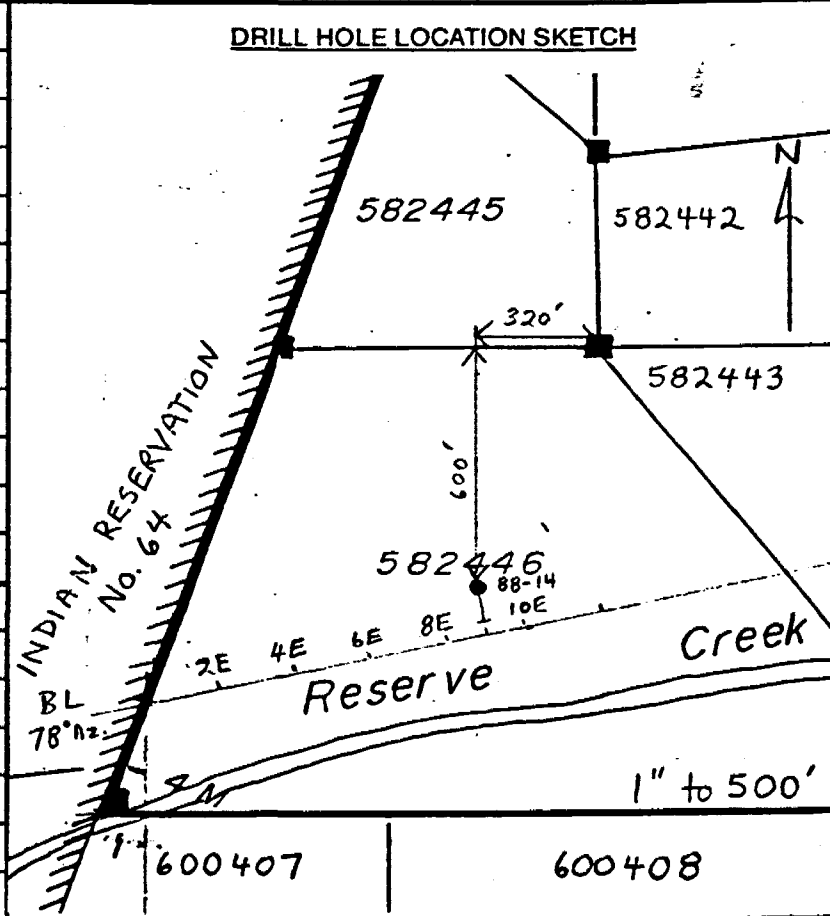
CHECKLIST: Colour, Grain & Fragment Sizes, Texture,
Brecciation, Alteration, Py. Po. B.M.

FOOTAGE		DESCRIPTION
FROM	TO	
0	19	Casing
19	67.2	Foliated Biotite - medium green, I-g, scattered hornblende xls, non-magnetic, numerous calcite trinites, foliation 60° C.A., some qtz trinites
		4.7 - 35.5 Zone of qtz-calcite veining
67.2	129.1	Magnetic amphibole zone - dark areas to green, strongly magnetic, foliation not as strong as in below unit, qtz trinites common, a few calcite trinites, generally non-orientated scattered magnetite xls, veining consists of py + py throughout zone.
		114.6 - 114.8 Qv, biotite + 1% po, albite
		68.7 - 69.5 Qtz vein, biotite + 5% calcite
		75.5 - 77.2 Zone of qv, 5-10% po, py
		104.9 - 106.4 Zone of qv, 7% po, py
		128 - 129.1 Zone of qv, 5-7% po
		@95.4 Qtz-albite? - biotite vein, 3% sulph., 1" wide
129.1	130	Foliated Biotite - non-magnetic
		130' E.O.H.

COMPANY GOLDPOST RESOURCES		TWP. OR AREA VEEKAY	NTS	HOLE NO.
PROPERTY RESERVE CREEK		CLAIM NO: 582446	42M/12	88-14
LOCATION (19 GRID): 1+29+1N / 9+00E		COLLAR ELEV: DATUM:		

LAT.	LONG.	UTM: ZONE	E'g	N'g	ETCH TESTS:	AZIMUTH: 168°		
DATES DRILLED: From AUG. 24		To AUG. 24		, 1988	DEPTH: ETCHED: CORRECTED:	DIP @ COLLAR: 75°		
DRILLED BY: HEATH & SHERWOOD					240'	69°	63°	FINAL LENGTH: 250'
ASSAYS BY: ACCURASSAY LAB								VERT. DEPTH:
OVERBURDEN: CASING LENGTH:		VERT. DEPTH						HORIZ. REACH: 88'
CASING DRILLED:				SHOE BITS USED:				CORE SIZE: 8Q
CASING RECOVERED:				SHOE BITS RECOVERED:				CORE DIAM:
DESCRIPTION OF OVERBURDEN:						SURFACE <input checked="" type="checkbox"/>	UNDERGROUND <input type="checkbox"/>	

WATER SOURCE: RESERVE CREEK		LENGTH OF WATERLINE:
DRILL CUTTINGS COLLECTED?	<input checked="" type="checkbox"/> Yes <input type="checkbox"/> No <input type="checkbox"/> Partial. (List samples and results on assay page.)	ONTARIO GEOLOGICAL SURVEY ASSESSMENT FILES OFFICE APR 3 1989 RECEIVED
CORE RECOVERY:	% (List intervals & % of poor recovery.)	
SPECIAL DRILLING PROCEDURES:		
DRILL COLLAR MARKED BY:		
If casing left in place, will the hole pump sufficient water for drilling?		
PURPOSE OF THIS HOLE: ZONE A		
RESULTS:		
COMMENTS: CORE SAMPLED 106'-206'		
225'-250'		



LOGGED BY: C. HORNER	SIGNATURE: <i>C. Horner</i>	DATE: AUG. 30/88	PAGE ONE OF 3	HOLE NO. 88-14
-----------------------------	-----------------------------	-------------------------	---------------	-----------------------

DIAMOND DRILL RECORD

88-14

Mineralogy, Shearing, Foliation,
Mt. Veining, Contacts, Ect.

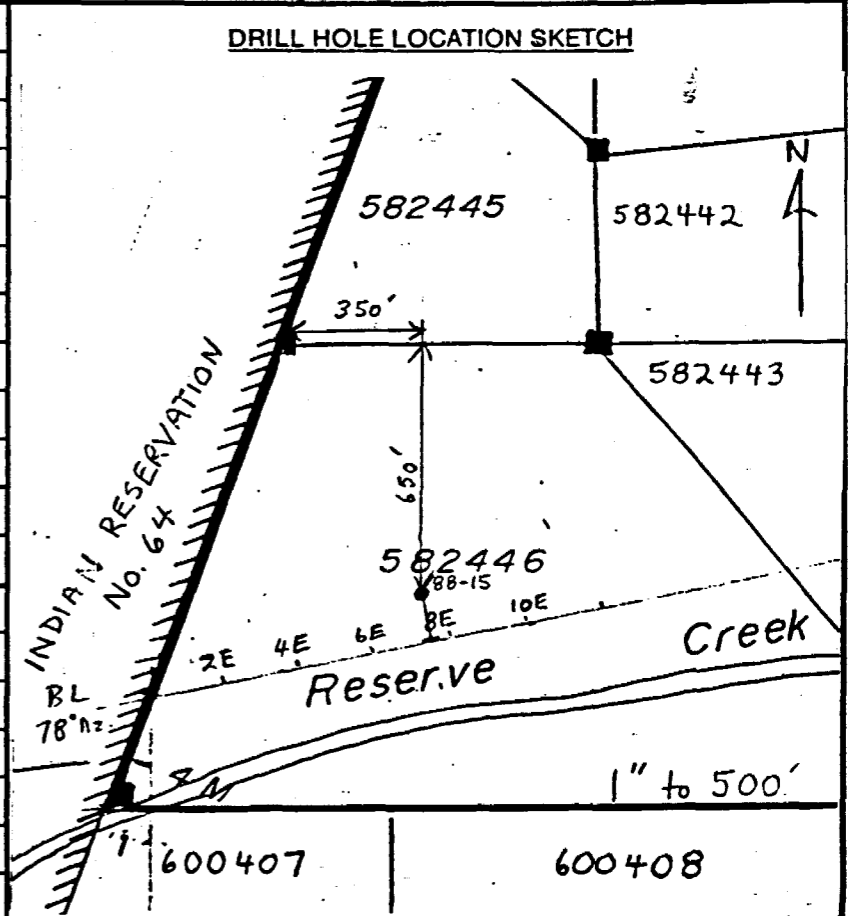
CHECKLIST - Colour, Grain & Fragment Sizes, Texture,
Brecciation, Alteration, Py. Po., B.M.

FOOTAGE		DESCRIPTION
FROM	TO	
0	22.5	Casing
22.5	110.5	Foliated Basalt - medium green f.a. with scattered blk x lls, mag- netic, numerous calcite veinlets parallel to foliation 20°-35° C.A. a few qtz veinlets
110.5	201	Magnetic Sulfide Zone - dark grey to green, f.g. strongly magnetic, scattered magnetite x lls, several st. veinlets, a few calcite veinlets, bearing amounts of py, py
	125.2 - 125.5	Bands of po
	@ 131.5	Qv, 1" wide, 5% po, py, 35° C.A.
	140.9 - 141	Qv, 1" wide, 10% po, py
	149 - 149.4	Zone of qv, 15% po, py
	@ 155	Qv, 1" wide, 60° C.A., 20% calcite crs. subhedral py - subhedral po.
	165.5 - 166.1	Zone of increased mag- netic, 17% magnetite

COMPANY GOLDPOST RESOURCES		TWP. OR AREA VEEKAY	NTS	HOLE NO.
PROPERTY RESERVE CREEK		CLAIM NO: 582446	42M/12	88-15
LOCATION (19 GRID): 1420N/7450E		COLLAR ELEV: _____ DATUM: _____		

LAT. _____	LONG. _____	UTM: ZONE _____	E'g _____	N'g _____	ETCH TESTS:	AZIMUTH: 168°		
DATES DRILLED: From AUG. 25		To AUG. 25		1988	DEPTH: 147'	ETCHED: 45°	CORRECTED: 37°	DIP @ COLLAR: 45°
DRILLED BY: HEATH + SHERWOOD								FINAL LENGTH: 160.6'
ASSAYS BY: ACCURASSAY LAB.								VERT. DEPTH: _____
OVERBURDEN: CASING LENGTH _____		VERT. DEPTH _____						HORIZ. REACH: 119'
CASING DRILLED: _____			SHOE BITS USED: _____					CORE SIZE: BQ
CASING RECOVERED: _____			SHOE BITS RECOVERED: _____					CORE DIAM: _____
DESCRIPTION OF OVERBURDEN: _____							SURFACE <input checked="" type="checkbox"/>	UNDERGROUND <input type="checkbox"/>

WATER SOURCE: RESERVE CREEK		LENGTH OF WATERLINE: _____
DRILL CUTTINGS COLLECTED? <input checked="" type="checkbox"/> Yes <input type="checkbox"/> No <input type="checkbox"/> Partial. (List samples and results on assay page.)		ONTARIO GEOLOGICAL SURVEY ASSESSMENT FILES OFFICE APR 3 1989 RECEIVED
CORE RECOVERY: _____ % (List intervals & % of poor recovery.)		
SPECIAL DRILLING PROCEDURES: _____		
DRILL COLLAR MARKED BY: _____		
If casing left in place, will the hole pump sufficient water for drilling? _____		
PURPOSE OF THIS HOLE: ZONE A		
RESULTS: _____		
COMMENTS: CORE SAMPLED 52'-131'		
141'-160.6'		



LOGGED BY: C. HORNER	SIGNATURE: <i>C. Horner</i>	DATE: AUG. 30/88	PAGE ONE OF 3	HOLE NO. 88-15
-----------------------------	-----------------------------	-------------------------	----------------------	-----------------------

DIAMOND DRILL RECORD

Mineralogy, Shearing, Foliation
Mt. Veining, Contacts, Ect.

CHECKLIST: Colour, Grain & Fragment Sizes, Texture,
Brecciation, Alteration, Py, Po, B, M, ...

FOOTAGE		DESCRIPTION
FROM	TO	
0	10.2	Casing
10.2	56.7	Foliated Basalt - medium green, f-g, foliation 55°-60° C.A., some massive sections, abundant calcite veinlets parallel to foliation, a few qtz veins, non-magnetic
		10.2-10.7 white lower qtz
56.7	120.1	Magnetic Sulfidized Zone - dark green to black, massive, scattered magnetic x-ls, variable amount of py, py generally less than 5%.
		57.7-57.9 QV, 60° C.A., 2% sulfide
		72-76.5 Lignite zone, 10% sulfides
		113.2-113.6 Zone of ...
120.1	160.6	Basalt - medium to dark green, foliated and massive sections, generally non- magnetic with a few magnetic sections, some sulfides present.
		@ 128.6 Qtz - moderate veinlet, 45° C.A.



Ontario

Ministry of Northern Affairs and Mines

Report of Work

DOCUMENT NO W8904-13



42M12SE0002 16 VECKAY LAKE

Mining

900

Name and Postal Address of Recorded Holder
GOLDPOST RESOURCES INC., SUITE 1201,
67 YONGE ST., TORONTO, ONT. M5E 1J8

Inspector's License No. **T4627 6440**

Summary of Work Performance and Distribution of Credits

Total Work Days Cr. claimed 4454	Mining Claim			Mining Claim			Mining Claim		
	Prefix	Number	Work Days Cr.	Prefix	Number	Work Days Cr.	Prefix	Number	Work Days Cr.
for Performance of the following work. (Check one only) <input type="checkbox"/> Manual Work <input type="checkbox"/> Shaft Sinking Drifting or other Lateral Work. <input type="checkbox"/> Compressed Air, other Power driven or mechanical equip. <input type="checkbox"/> Power Stripping <input checked="" type="checkbox"/> Diamond or other Core drilling <input type="checkbox"/> Land Survey	TB	880938	120	TB	880946	120	TB	880954	120
		880939	120		880947	120		880955	120
		880940	120		880948	120		880956	120
		880941	120		880949	120		880957	120
		880942	120		880950	120		880958	120
		880943	120		880951	120		880959	120
		880944	120		880952	120		880960	120
	880945	120		880953	120		880961	120	

All the work was performed on Mining Claim(s) **TB 582439, TB 582442, TB 582446 TB 600408**

Required Information eg: type of equipment, Names, Addresses, etc. (See Table Below) **TB 582443, TB 582440**

Heath & Sherwood Drilling (1986) Inc.
 34 Duncan Ave. North
 P.O. Box 998
 Kirkland Lake, Ont.
 P2N 3L3

Model HS-20A Drill used.
 Drilling program August 5/88 to Aug. 26/88

* Work assignments see over.

ONTARIO GEOLOGICAL SURVEY
 ASSESSMENT FILES OFFICE
 APR 3 1989
 RECEIVED

RECEIVED
 THUNDER BAY
 MINING DIVISION
 16 PM 3 02

Date of Report: **March 15/89**
 Recorded Holder or Agent (Signature): *Carolyn Horner*

Certification Verifying Report of Work

I hereby certify that I have a personal and intimate knowledge of the facts set forth in the Report of Work annexed hereto, having performed the work or witnessed same during and/or after its completion and the annexed report is true.

Name and Postal Address of Person Certifying
CAROLYN HORNER, % H.E. NEAL & ASSOC. LTD., 301-55 QUEEN ST. E., TORONTO, ONT. M5C 1R6

Date Certified: **March 15/89**
 Certified by (Signature): *Carolyn Horner*

Table of Information/Attachments Required by the Mining Recorder

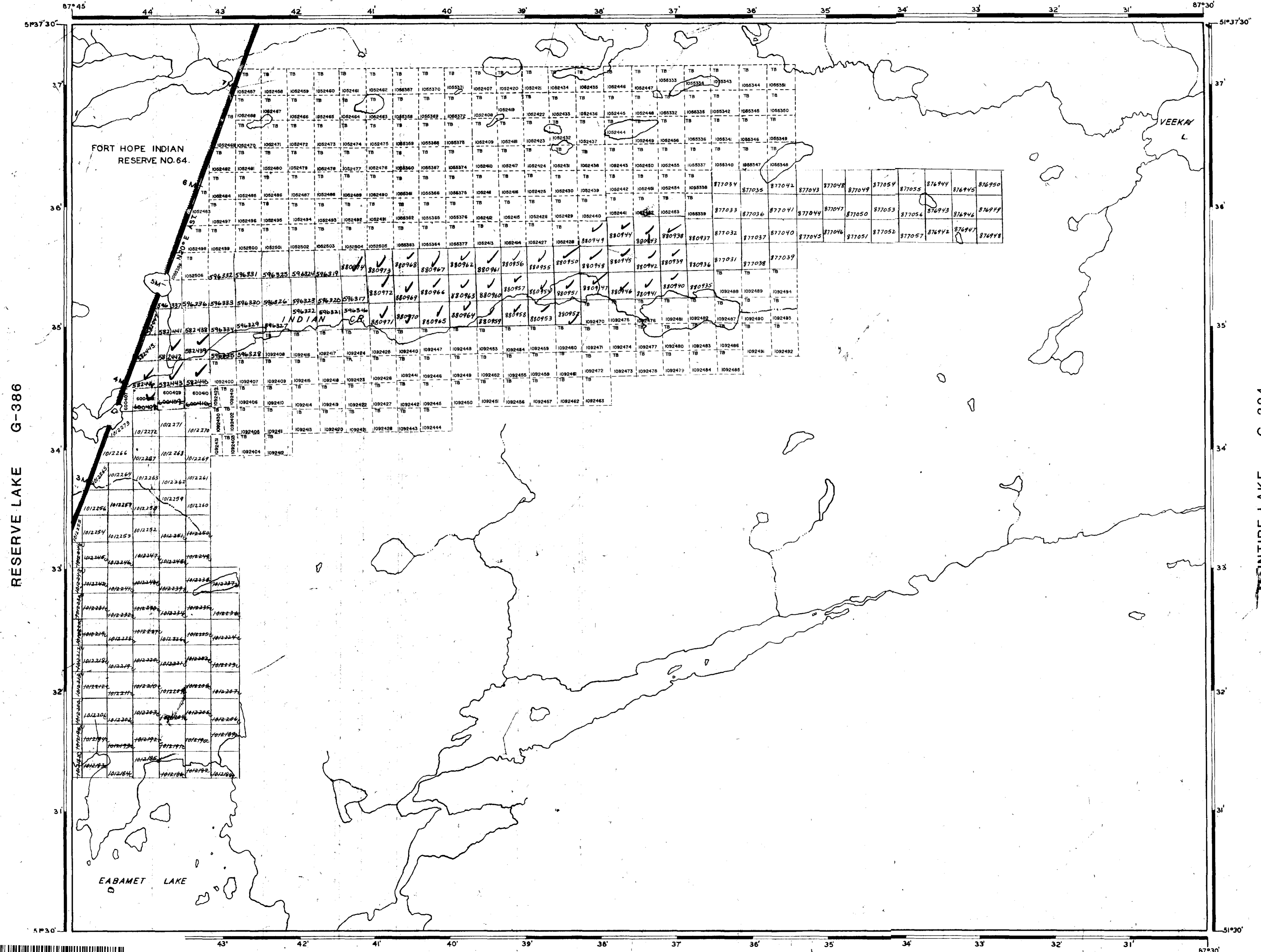
Type of Work	Specific information per type	Other information (Common to 2 or more types)	Attachments
Manual Work	Nil	Names and addresses of men who performed manual work/operated equipment, together with dates and hours of employment.	Work Sketch: these are required to show the location and extent of work in relation to the nearest claim post.
Shaft Sinking, Drifting or other Lateral Work			
Compressed air, other power driven or mechanical equip.	Type of equipment	Names and addresses of owner or operator together with dates when drilling/stripping done.	
Power Stripping	Type of equipment and amount expended. Note: Proof of actual cost must be submitted within 30 days of recording.		
Diamond or other core drilling	Signed core log showing; footage, diameter of core, number and angles of holes.	Nil	Work Sketch (as above) in duplicate
Land Survey	Name and address of Ontario land surveyor.		Nil

Claim numbers (continued)

Prefix	Number	Work Days Cr.
TB	880962	120
	880963	120
	880964	120
	880965	120
	880966	120
	880967	120
	880968	120
	880969	120
	880970	120
	880971	120
	880972	120
	880973	120
	880974	120

GIFFORD LAKE G-255

REFERENCES



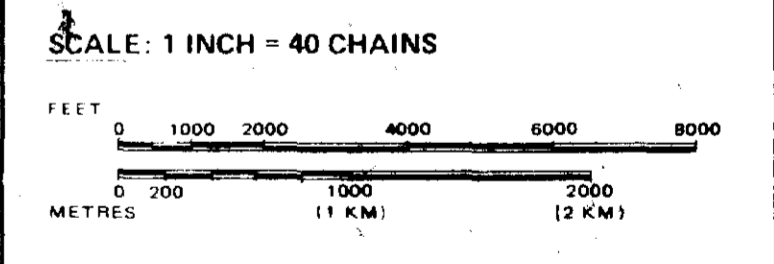
LEGEND

- HIGHWAY AND ROUTE No.
- OTHER ROADS
- TRAILS
- SURVEYED LINES:
 - TOWNSHIPS, BASE LINES, ETC.
 - LOTS, MINING CLAIMS, PARCELS, ETC.
- UNSURVEYED LINES:
 - LOT LINES
 - PARCEL BOUNDARY
 - MINING CLAIMS ETC.
- RAILWAY AND RIGHT OF WAY
- UTILITY LINES
- NON-PERENNIAL STREAM
- FLOODING OR FLOODING RIGHTS
- SUBDIVISION OR COMPOSITE PLAN
- RESERVATIONS
- ORIGINAL SHORELINE
- MARSH OR MUSKEG
- MINES
- TRAVERSE MONUMENT

DISPOSITION OF CROWN LANDS

TYPE OF DOCUMENT	SYMBOL
PATENT, SURFACE & MINING RIGHTS	●
" SURFACE RIGHTS ONLY	○
" MINING RIGHTS ONLY	◐
LEASE, SURFACE & MINING RIGHTS	■
" SURFACE RIGHTS ONLY	◼
" MINING RIGHTS ONLY	◻
LICENCE OF OCCUPATION	▼
ORDER-IN-COUNCIL	OC
RESERVATION	⊙
CANCELLED	⊖
SAND & GRAVEL	⊕

NOTE: MINING RIGHTS IN PARCELS PATENTED PRIOR TO MAY 6, 1913, VESTED IN ORIGINAL PATENTEES BY THE PUBLIC LANDS ACT, R.S.O. 1970, CHAP. 380, SEC. 63, SUBSEC. 1.



AREA
VEEKAY LAKE
 M.N.R. ADMINISTRATIVE DISTRICT
GERALDTON
 MINING DIVISION
THUNDER BAY
 LAND TITLES / REGISTRY DIVISION
KENORA/PATRICIA

Ministry of Natural Resources
 Land Management Branch
 Ontario

Date: JULY, 1981
 Number: **G-440**
 August 16, 1985

RESERVE LAKE G-386

MCINTIRE LAKE G-324

SHAVER LAKE G-397

