



42M12SE0008 14 VEEKAY LAKE

010

Diamond Drilling

Area Veekay Lake

Report NO 14

Work performed by: Pricemore Resources Inc.

Claim NO	Hole NO	Footage	Date	Note
TB 582446	1-82	216.0	June/82	(1)
	2-82	307.0	June/82	(1)
	3-82	203.0	June/82	(1)
	4-82	307.0	June/82	(1)
	5-82	357.0	June/82	(1)
	6-82	297.0	June/82	(1)
	7-82	207.0	June/82	(1)
	8-82	207.0	June/82	(1)
	9-82	207.0	June/82	(1)
	9A-82	295.0	June/82	(1)
	10-82	207.0	June/82	(1)
	11-82	197.0	July/82	(1)
	12-82	297.0	July/82	(1)
	13-82	207.0	July/82	(1)
	14-82	316.0	July/82	(1)
	15-82	210.0	July/82	(1)
	16-82	300.0	July/82	(1)
	17-82	197.0	July/82	(1)
	18-82	272.0	July/82	(1)
	19-82	206.0	July/82	(1)
	20-82	197.0	July/82	(1)
	21-82	307.0	July/82	(1)
22-82	257.0	July/82	(1)	
TB 582444	23-82	247.0	July/82	(1)
TB 582441	24-82	257.0	July/82	(1)
TB 582443	25-82	237.0	Aug/82	(1)

Notes: (1) #359-82

PROPERTY PRICEMORE RESOURCES INC.
FORT HOPE, ONTARIO

PAGE 1 (OF 1)

LOCATION 847'E, 124'N (DOME BASE LINE) BEARING 168°T HOLE NO. 1-82

LOGGED BY ROSS KIDD ELEVATION _____ DIP -65° FINAL DEPTH 216.0 FEET

STARTED JUNE 7TH, 1982 TESTS (CORRECTED) _____

FINISHED JUNE 9TH, 1982

200' = -52°

CASING PULLED

CORE SIZE BQ (ONE AND 7/16THS INCHES)

FROM	TO	DESCRIPTION
0.0	13.0	<u>CASING</u>
13.0	56.0	<u>ANDESITE</u> CHLORITIC AND SCHISTOSE. NUMEROUS CARBONATE THREADS AND STRINGERS, MOSTLY BARREN OF SULFIDES.
56.0	120.2	<u>ANDESITE</u> LESS SCHISTOSE; MORE MASSIVE. GREENISH.
120.2	150.0	<u>ANDESITE</u> DARKER AND MORE DENSE. SPARSE MAGNETITE.
150.0	160.0	<u>TUFF</u> LIGHT GREEN. BANDING @ 50° TO CORE AT 156'.
160.0	169.0	<u>ANDESITE</u> SOME NARROW TUFF SECTIONS. MORE CHLORITIC.
169.0	216.0	<u>ANDESITE</u> DENSE AND MASSIVE. LIGHT GREEN. A FEW SCATTERED THREADS OF QUARTZ-CARBONATE. FLOW LINES @ 55° TO CORE AT 212'.
	216.0	<u>END OF HOLE</u>

SULFIDE ZONE

99.4' TO 174.0':

- 99.4-104.7: FREQUENT BANDS OF PYRRHOTITE AND PYRITE IN QUARTZ-CARBONATE.
- 104.7-120.2: A FEW SCATTERED THREADS OF QUARTZ-CARBONATE WITH MINOR PYRRHOTITE.
- 120.2-124.8: APPRECIABLE PYRITE, PYRRHOTITE, AND FREQUENT QUARTZ-CARBONATE THREADS.
- 124.8-150.0: FEWER THREADS OF QUARTZ-CARBONATE AND SPARSE SULFIDES.
- 150.0-169.0: APPRECIABLE PYRITE, LESSER PYRRHOTITE, AND A FEW WHITE QUARTZ STRINGERS.
- 169.0-174.0: A FEW THREADS OF QUARTZ-CARBONATE, ALMOST NO SULFIDES.

HOLE NO. **1-82**

Ross Kidd

PROPERTY PRICEMORE RESOURCES INC.
FORT HOPE AREA ONTARIO

PAGE 1 (OF 1)

LOCATION 847'E, 124'N (DOME BASE LINE) BEARING 168° T HOLE NO. 2-82
 (SAME SETUP AS HOLE 1-82)

LOGGED BY ROSS KIDD ELEVATION _____ DIP -85° FINAL DEPTH 307.0 FT.

STARTED JUNE 9TH, 1982 TESTS (CORRECTED) _____

FINISHED JUNE 10TH, 1982

CASING PULLED

307' = -69°

CORE SIZE BQ

FROM	TO	DESCRIPTION
0.0	9.0	<u>CASING</u>
9.0	205.0	<u>ANDESITE</u> CHLORITIC AND SCHISTOSE. INFREQUENT QUARTZ AND QUARTZ-CARBONATE THREADS, USUALLY BARREN OF SULFIDES. SCHIST LINES AT 15' TO CORE AT 77', AND AT 25' TO CORE AT 154'. WHITE QUARTZ VEIN WITH SPARSE SULFIDES FROM 131.0-132.0.
205.0	267.0	<u>ANDESITE</u> LESS SCHISTOSE AND CHLORITIC. DARK GREEN. A FEW SCATTERED WHITE QUARTZ STRINGERS UP TO 3/4" WIDE. 20' TO CORE @ 219'.
267.0	292.0	<u>HORNBLENDITE</u> MASSIVE. DARK GREEN. APPRECIABLE PYRRHOTITE, PYRITE. ODD SPECK OF CHALCOPYRITE. RARE SPECK OF SCHEELITE.
292.0	307.0	<u>ANDESITE</u> CHLORITIC. DARK GREEN. INFREQUENT THREADS AND STRINGERS OF QUARTZ-CARBONATE.
	307.0	<u>END OF HOLE</u>

SULFIDE ZONE

205.0' to 292.0':

205.0-252.0: SPARSE PYRRHOTITE AND PYRITE IN DISSEMINATIONS AND IN QUARTZ - CARBONATE THREADS.

252.0-267.0: INCREASED PYRRHOTITE, BUT STILL MINOR.

267.0-292.0: APPRECIABLE PYRRHOTITE AND PYRITE IN THREADS AND STRINGERS OF QUARTZ-CARBONATE.

Ross Kidd

HOLE NO. **2-82**

PROPERTY PRICEMORE RESOURCES INC.
 FORT HOPE AREA ONTARIO

PAGE 1 (OF 1)

LOCATION 803'E, 124'N (DOME BASE LINE) BEARING 168°T HOLE NO. 3-82

LOGGED BY ROSS KIDD ELEVATION _____ DIP -65° FINAL DEPTH 203.0 FT.

STARTED JUNE 11TH, 1982 TESTS (CORRECTED) _____

FINISHED JUNE 12TH, 1982

CASING PULLED

200' = -46½°

CORE SIZE BQ

FROM	TO	DESCRIPTION
0.0	5.0	<u>CASING</u>
5.0	76.0	<u>ANDESITE TUFF</u> CHLORITIC. LIGHTISH GREEN. A FEW SCATTERED THREADS OF QUARTZ AND QUARTZ-CARBONATE. MINOR MAGNETITE. 45° TO CORE AT 46'.
76.0	125.0	<u>ANDESITE</u> DARK GREEN. DENSE. NUMEROUS THREADS OF QUARTZ-CARBONATE.
125.0	203.0	<u>ANDESITE</u> DENSE. LIGHTER GREEN. ALMOST NO SULFIDES. 60° TO CORE AT 136'. AND 60° TO CORE AT 203'.
	203.0	<u>END OF HOLE</u>

SULFIDE ZONE

85.0' TO 125.0' :

- 85.0-105.0: MINOR PYRRHOTITE ALONG SLIP PLANES.
- 105.0-110.0: APPRECIABLE PYRRHOTITE.
- 110.0-115.0: INCLUDES 4" QUARTZ VEIN CARRYING CONSIDERABLE PYRITE.
- 115.0-125.0: APPRECIABLE PYRRHOTITE IN THREADS.

Ross Kidd

PROPERTY PRICEMORE RESOURCES INC.
FORT HOPE AREA ONTARIO

PAGE 1 (OF 1)

LOCATION 803'E, 124'N (DOME BASE LINE) BEARING 168° HOLE NO. 4-82
 (SAME SETUP AS HOLE 3-82)

LOGGED BY ROSS KIDD ELEVATION _____ DIP -85° FINAL DEPTH 307.0 FT.

STARTED JUNE 12TH, 1982 TESTS (CORRECTED) _____

FINISHED JUNE 14TH, 1982

CASING PULLED

300' = -66½°

CORE SIZE BQ

FROM	TO	DESCRIPTION
0.0	7.0	<u>CASING</u>
7.0	187.0	<u>ANDESITE TUFF</u> CHLORITIC. LIGHT GREEN. SCATTERED THREADS OF QUARTZ-CARBONATE. SPARSE PYRITE. BANDING @ 15° TO CORE AT 57', AND 30° TO CORE AT 147'. 107.5 - 108.8: QUARTZ VEIN WITH A 1" BLOB OF PYRRHOTITE AND MINOR CHALCOPYRITE. 150.6 - 151.0: QUARTZ VEIN, SPARSE PYRITE. BANDING @ 30° TO CORE AT 187'.
187.0	307.0	<u>ANDESITE</u> DARK. DENSE. COARSER GRAINED. FLOW LINES @ 60° TO CORE AT 277', AND AT 45° TO CORE @ 307'.
	307.0	<u>END OF HOLE</u>
		<u>SULFIDE ZONE</u>
		<u>187.0' TO 260.0':</u>
		187.0-227.0: SPARSE PYRRHOTITE, PYRITE, ODD SPECK CHALCOPYRITE.
		227.0-260.0: APPRECIABLE PYRITE AND PYRRHOTITE, AND OCCASIONAL QUARTZ VEIN. FREQUENT QUARTZ-CARBONATE THREADS.

Ross Kidd

PROPERTY PRICEMORE RESOURCES INC.
FORT HOPE AREA ONTARIO

PAGE 1 (OF 1)

LOCATION 900'E, 124'N (DOME BASE LINE) BEARING 168°T HOLE NO. 5-82

LOGGED BY ROSS KIDD ELEVATION _____ DIP -65° FINAL DEPTH 357.0 FT.

STARTED JUNE 15TH, 1982 TESTS (CORRECTED) _____

FINISHED JUNE 16TH, 1982 TO 203', DEEPENED
TO 357' FROM JUNE 19 TO
JUNE 20, 1982,

200' = -52°
 357' = -53½°

CASING PULLED

CORE SIZE BQ

FROM	TO	DESCRIPTION
0.0	13.0	<u>CASING</u>
13.0	91.0	<u>ANDESITE TUFF</u> CHLORITIC. INFREQUENT THREADS AND STRINGERS OF QUARTZ-CARBONATE. ALMOST NO SULFIDES. DARK GREEN.
91.0	152.0	<u>ANDESITE</u> DENSE. DARK GREEN. COARSER GRAINED. CHLORITIC. BANDING AT 40° TO CORE AT 57'; 50° TO CORE AT 87'; AND 30° TO CORE AT 126'.
152.0	203.0	<u>ANDESITE</u> LESS CHLORITIC. SLIGHTLY SCHISTED. ALMOST NO SULFIDES. SCHIST PLANES AT 50° TO CORE AT 167'; AND 50° TO CORE AT 196'.
	203.0	<u>END OF HOLE</u> (AS AT JUNE 16, 1982)
<u>SULFIDE ZONE</u> <u>91.0' TO 152.0":</u> 91.0-126.0: VERY SPARSE PYRITE AND PYRRHOTITE, SOME THREADS OF QUARTZ-CARBONATE. 126.0-132.0: APPRECIABLE PYRITE, PYRRHOTITE, AND A 3" QUARTZ VEINLET. 132.0-142.0: SPARSE PYRRHOTITE. 142.0-147.0: INCLUDES 5" QUARTZ VEIN. 147.0-152.0: VERY SPARSE PYRRHOTITE, PYRITE.		
203.0	269.8	<u>ANDESITE</u> SLIGHTLY SCHISTED. VERY SPARSE SULFIDES.
269.8	271.8	<u>DIORITE DIKE</u> SHARP CONTACTS @ 60° TO CORE. COARSE HORNBLLENDE AND BIOTITE.
271.8	275.8	<u>ANDESITE TUFF</u> CHLORITIC. VERY SPARSE SULFIDES.
275.8	340.5	<u>HORNBLENDITE</u> COARSE. 4" QUARTZ VEIN @ 294.0, AND 3" VEIN @ 312.0.
340.5	357.0	<u>ANDESITE</u> DENSE. CHLORITIC. NO SULFIDES.
	357.0	<u>END OF HOLE</u> (AS AT JUNE 20, 1982)

HOLE NO. **5-82**

Ross Kidd

PROPERTY PRICEMORE RESOURCES INC.
FORT HOPE AREA ONTARIO

PAGE 1 (OF 1)

LOCATION 900'E, 124'N (DOME BASE LINE) BEARING 168°T HOLE NO. 6-82
 (SAME SETUP AS HOLE 5-82)

LOGGED BY ROSS KIDD ELEVATION _____ DIP -85° FINAL DEPTH 297.0 FT.

STARTED JUNE 16TH, 1982 TESTS (CORRECTED) _____

FINISHED JUNE 18TH, 1982

297' = -76½°

CASING PULLED

CORE SIZE BQ

FROM	TO	DESCRIPTION
0.0	21.0	<u>CASING</u>
21.0	197.0	<u>ANDESITE TUFF</u> CHLORITIC. VERY SPARSE DISSEMINATED PYRRHOTITE. MAINLY WHITE MILKY QUARTZ FROM 96.3 TO 111.0, VERY SPARSE SULFIDES. 153.5 - 157.5: DIORITE.
197.0	282.0	<u>ANDESITE</u> COARSER GRAINED, AND MORE DENSE. LESS CHLORITIC.
282.0	297.0	<u>ANDESITE</u> DENSE. LIGHT GREEN. SLIGHTLY SCHISTED. VERY SPARSE SULFIDES.
	297.0	<u>END OF HOLE</u>
		<u>CORE ANGLES:</u> 46' = 30° 78' = 20° 119' = 35° 145' = 30° 196' = 30°

SULFIDE ZONES

197.0' to 222.0':

- 197.0-212.0: SPARSE DISSEMINATED PYRRHOTITE AND PYRITE.
- 212.0-217.0: SEVERAL QUARTZ STRINGERS WITH PATCHES PYRRHOTITE.
- 217.0-222.0: 30% QUARTZ IN STRINGERS. VERY SPARSE PYRRHOTITE.

247.0' to 282.0':

- 247.0-267.0: INCREASED PYRRHOTITE, BUT STILL SPARSE.
- 267.0-282.0: INCREASED PYRITE AND PYRRHOTITE IN FREQUENT SEAMS.

Ross Kidd

PROPERTY PRICEMORE RESOURCES INC.
FORT HOPE AREA ONTARIO

PAGE 1 (OF 1)

LOCATION 1270'E, 590'N (DOME BASE LINE) BEARING 210°T HOLE NO. 7-82

LOGGED BY ROSS KIDD ELEVATION _____ DIP -55° FINAL DEPTH 207.0 FT.

STARTED JUNE 21ST, 1982 TESTS (CORRECTED) _____

FINISHED JUNE 23RD, 1982

CASING PULLED

207' = -50°

CORE SIZE BQ

FROM	TO	DESCRIPTION
0.0	13.5	<u>CASING</u> (12.5' - 13.5': WHITE GRANITE BOULDER)
13.5	66.0	<u>DIORITE</u> COARSE GRAINED. MASSIVE. A FEW SCATTERED THREADS OF QUARTZ-CARBONATE. VERY SPARSE PYRITE. 3 INCH QUARTZ VEIN AT 14.0', WITH SPARSE PYRITE.
66.0	71.0	<u>ANDESITE</u> MORE SCHISTOSE, AND SOMEWHAT TUFFACEOUS, WITH BANDING @ 50° TO CORE. A FEW QUARTZ STRINGERS AND THREADS, AND SEAMS OF RED FELDSPAR AND YELLOWISH GREEN EPIDOTE. NO SCHEELITE SEEN UNDER MINERAL LAMP.
71.0	155.5	<u>DIABASE</u> MASSIVE. MEDIUM GRAINED. A FEW QUARTZ CARBONATE THREADS. BOTH CONTACTS BROKEN UP. FINER GRAINED AT MARGINS.
155.5	207.0	<u>ANDESITE</u> MEDIUM GRAINED. SCHISTOSE. VERY SPARSE PYRITE. SCHIST LINES @ 40° TO CORE. 155.5 - 157.5: QUARTZ STRINGER ZONE WITH MINOR PYRITE AND THE ODD SPECK CHALCOPYRITE. ONE SPECK SCHEELITE SEEN UNDER THE LAMP. 157.5 - 164.5: SCATTERED THREADS QUARTZ-CARBONATE, SPARSE PYRITE. 191.0 - 197.0: QUARTZ-CARBONATE STRINGER ZONE, SPARSE PYRITE.
	207.0	<u>END OF HOLE</u>

Ron Kidd

HOLE NO. 7-82

PROPERTY PRICEMORE RESOURCES INC.
FORT HOPE AREA ONTARIO

PAGE 1 (OF 1)

LOCATION 1230'E, 620'N (DOME BASE LINE) BEARING 210°T HOLE NO. 8-82

LOGGED BY ROSS KIDD ELEVATION _____ DIP -55° FINAL DEPTH 207.0 FT.

STARTED JUNE 24TH, 1982 TESTS (CORRECTED) _____

FINISHED JUNE 25TH, 1982

CASING PULLED

207' = -52½°

CORE SIZE BQ

FROM	TO	DESCRIPTION
0.0	28.0	<u>CASING</u>
28.0	72.0	<u>DIORITE</u> DENSE. COARSE GRAINED. VERY SPARSE PYRITE. 4 INCH WHITE QUARTZ VEIN AT 30.0', AT 45° TO CORE.
72.0	74.5	<u>ANDESITE</u> MEDIUM GRAINED. DENSE.
74.5	173.7	<u>DIABASE</u> DENSE. MEDIUM GRAINED. FINE GRAINED IN FIRST 10 FEET, AND IN LAST 5 FEET. BOTH CONTACTS AT 40° TO CORE.
173.7	184.0	<u>ANDESITE</u> CHLORITIC. SCHISTOSE. A FEW QUARTZ CARBONATE THREADS.
184.0	207.0	<u>DIORITE</u> COARSE. GREY.
	207.0	<u>END OF HOLE</u>

Ross Kidd

HOLE NO. **8-82**

PROPERTY PRICEMORE RESOURCES INC.
 FORT HOPE AREA ONTARIO

PAGE 1 (OF 1)

LOCATION 1190'E, 640'N (DOME BASE LINE) BEARING 210°T HOLE NO. 9-82

LOGGED BY ROSS KIDD ELEVATION _____ DIP -50° FINAL DEPTH 207.0 FT.

STARTED JUNE 26TH, 1982 TESTS (CORRECTED) _____

FINISHED JUNE 27TH, 1982

207' = -46°

CASING PULLED

CORE SIZE BQ

FROM	TO	DESCRIPTION
0.0	35.0	<u>CASING</u>
35.0	47.0	<u>ANDESITE</u> DENSE. DARK GREEN TO BLACK. VERY SPARSE PYRITE. 3 INCH WHITE QUARTZ STRINGER (NO SULFIDES) AT 43.0'.
47.0	110.4	<u>DIABASE</u> MEDIUM GRAINED. DENSE. UPPER CONTACT AT 40° TO CORE, AND LOWER CONTACT AT 25° TO CORE. VERY SPARSE PYRITE.
110.4	144.0	<u>ANDESITE</u> SCHISTOSE. MEDIUM GRAINED. 111.0' - 134.0': QUARTZ CARBONATE STRINGER ZONE, WITH MINOR PYRITE, PYRRHOTITE, CHALCOPYRITE. OCCASIONAL SPECK SCHEELITE UNDER THE MINERAL LAMP.
144.0	192.6	<u>DIORITE</u> COARSE GRAINED. BOTH CONTACTS AT 45° TO CORE. DENSE.
192.6	207.0	<u>ANDESITE</u> CHLORITIC. SCHISTOSE. MEDIUM GRAINED. VERY SPARSE PYRITE. 198.8' - 202.0': WHITE MILKY QUARTZ VEIN AT 60° TO CORE. BOTH CONTACTS BRECCIATED, WITH A LITTLE PYRRHOTITE. 206.0' - 206.5": QUARTZ CARBONATE VEIN. NO SULFIDES.
	207.0	<u>END OF HOLE</u>
		<u>STRINGER ZONE</u> (111.0' TO 134.0')
		111.0 - 118.0: MOSTLY QUARTZ-CARBONATE.
		118.0 - 122.0: 60% QUARTZ, APPRECIABLE SULFIDES.
		122.0 - 134.0: 20% QUARTZ, MINOR SULFIDES, CONTORTED IN LAST 4 FEET.

HOLE NO. **9-82**

Ross Kidd

PROPERTY PRICEMORE RESOURCES INC.
FORT HOPE AREA ONTARIO

PAGE 1 (OF 1)

LOCATION 1190'E, 640'N, (DOME BASE LINE) BEARING 210°T HOLE NO. 9A-82
 (SAME SETUP AS HOLE 9-82)

LOGGED BY ROSS KIDD ELEVATION _____ DIP -70° FINAL DEPTH 295.0 FT.

STARTED JUNE 27TH, 1982 TESTS (CORRECTED) _____

FINISHED JUNE 29TH, 1982

CASING PULLED

295' = -66°

CORE SIZE BQ

FROM	TO	DESCRIPTION
0.0	31.0	<u>CASING</u>
31.0	31.7	<u>QUARTZ VEIN</u> MILKY. NO SULFIDES. RHODO-CHROSITE AT LOWER CONTACT, WHICH IS AT 60° TO CORE.
31.7	47.6	<u>DIABASE</u> MEDIUM GRAINED. FREQUENT IRREGULAR THREADS OF QUARTZ-CARBONATE. VERY SPARSE PYRITE. 31.7' - 34.0': POSSIBLE FAULT ZONE.
47.6	111.0	<u>FELDSPAR PORPHYRY</u> MEDIUM TO FINE GRAINED. VERY SPARSE PYRITE. PHENOCRYSTS ARE AT 20° TO CORE FROM 87' TO 97', AND THEREAFTER AT ABOUT 45° TO CORE. CONTACTS BROKEN UP. 87.5': 5 INCH QUARTZ VEIN, FOLLOWED BY A NUMBER OF VEINS AND STRINGERS IN NEXT 4 FEET. 109.0': 8 INCH QUARTZ VEIN, BARREN.
111.0	152.0	<u>DIORITE</u> DENSE. MEDIUM GRAINED, COARSENING AS HOLE DEEPENS. VERY SPARSE PYRITE.
152.0	295.0	<u>DIABASE</u> MASSIVE. MEDIUM GRAINED. UPPER CONTACT AT 30° TO CORE. VERY SPARSE PYRITE.
	295.0	<u>END OF HOLE</u>

Ross Kidd

HOLE NO. **9A-82**

PROPERTY PRICEMORE RESOURCES INC.
FORT HOPE AREA ONTARIO

PAGE 1 (OF 1)

LOCATION 1150'E, 690'N (DOME BASE LINE) BEARING 210°T HOLE NO. 10-82

LOGGED BY ROSS KIDD ELEVATION _____ DIP -50° FINAL DEPTH 207.0 FEET

STARTED JUNE 30TH, 1982 TESTS (CORRECTED)

FINISHED JULY 1ST .., 1982

207' = -47½°

CASING PULLED

CORE SIZE BQ

FROM	TO	DESCRIPTION
0.0	36.0	<u>CASING</u>
36.0	79.5	<u>ANDESITE</u> GREY. MEDIUM GRAINED. FLOW LINES AT 45° TO CORE. FREQUENT QUARTZ-CARBONATE THREADS AND STRINGERS, SPARSE PYRITE.
79.5	191.0	<u>ANDESITE</u> DENSE. COARSE GRAINED. VERY SPARSE PYRITE. 122': 6 INCH WHITE QUARTZ VEIN. 165': 2 INCH QUARTZ STRINGER, WITH MINOR PYRRHOTITE, PYRITE.
191.0	207.0	<u>DIORITE</u> MOTTLED. DENSE. OCCASIONAL THREAD OF QUARTZ-CARBONATE. VERY SPARSE PYRITE.
	207.0	<u>END OF HOLE</u>

Ron Kidd

PROPERTY PRICEMORE RESOURCES INC.
FORT HOPE, ONTARIO

PAGE 1 (OF 1)

LOCATION 700'E, 120'N (DOME BASE LINE) BEARING 168°T HOLE NO. 11-82

LOGGED BY ROSS KIDD ELEVATION _____ DIP -65° FINAL DEPTH 197.0 FEET

STARTED JULY 4TH, 1982 TESTS (CORRECTED)

FINISHED JULY 5TH, 1982

CASING PULLED

197' = -63½°

CORE SIZE BQ

FROM	TO	DESCRIPTION
0.0	18.0	<u>CASING</u>
18.0	18.5	<u>GRANITE AND MILKY QUARTZ BOULDERS</u>
18.5	162.0	<u>ANDESITE</u> SCHISTOSE. CHLORITIC. FREQUENT QUARTZ AND QUARTZ-CARBONATE THREADS, MAINLY AT 45° TO CORE. 56.8' - 59.0': WHITE MILKY QUARTZ VEIN, NO SULFIDES.
162.0	197.0	<u>ANDESITE</u> MORE DENSE, AND NOT SO SCHISTOSE. FLOW LINES @ 40° TO CORE. CONSIDERABLE QUARTZ-CARBONATE STRINGER ACTIVITY, DECREASING TOWARDS END OF HOLE. SOME SHORT BIOTITIC SECTIONS IN FIRST 15 FEET.
	197.0	<u>END OF HOLE</u>

SULFIDE ZONE

102.0' TO 162.0':

102.0 - 112.0: THREE 3" QUARTZ VEINS, WITH APPRECIABLE PYRITE, PYRRHOTITE. (6%)
 112.0 - 132.0: FREQUENT QUARTZ-CARBONATE THREADS, BUT ONLY MINOR PYRITE, PYRRHOTITE. (ABOUT 1-2% SULFIDES)

Ross Kidd

PROPERTY PRICEMORE RESOURCES INC.
FORT HOPE, ONTARIO

PAGE 1 (OF 1)

LOCATION 700'E, 120'N (DOME BASE LINE) BEARING 168°T HOLE NO. 12-82
 (SAME SETUP AS HOLE 11-82)

LOGGED BY ROSS KIDD ELEVATION _____ DIP -85° FINAL DEPTH 297.0 FEET

STARTED JULY 1ST, 1982 TESTS (CORRECTED) _____

FINISHED JULY 3RD, 1982

297.0' = -61°

CASING PULLED

CORE SIZE BQ

FROM	TO	DESCRIPTION
0.0	17.0	<u>CASING</u>
17.0	17.5	<u>WHITE GRANITE BOULDER</u>
17.5	257.0	<u>ANDESITE</u> SCHISTOSE. TUFFACEOUS. LIGHT GREEN. MEDIUM GRAINED. BANDING AT 10°-25° TO CORE. CONSIDERABLE MUSCOVITE IN STREAKS. VERY SPARSE PYRITE. 66.0-67.0: 40% QUARTZ, MINOR PYRRHOTITE. 112.3': 2 INCH BARREN QUARTZ STRINGER AT 30° TO CORE. 167.0': 2 INCH BARREN QUARTZ STRINGER AT 45° TO CORE. 171.5': 3 INCH BARREN QUARTZ STRINGER AT 30° TO CORE. 184.0': 2 INCH BARREN QUARTZ STRINGER AT 30° TO CORE.
257.0	297.0	<u>ANDESITE</u> DENSE. CONSIDERABLE BIOTITE AND MUSCOVITE. VERY SPARSE PYRITE. LIGHT GREEN-GREY. FLOW LINES @ 40° TO CORE.
	297.0	<u>END OF HOLE</u>

SULFIDE ZONE
192.0' to 257.0':
 192.0 - 202.0: MINOR DISSEMINATED PYRITE AND PYRRHOTITE. (2%)
 202.0 - 257.0: SPARSE PYRITE, PYRRHOTITE. (1%)

Ross Kidd

HOLE NO. **12-82**

PROPERTY

PRICEMORE RESOURCES INC.
FORT HOPE, ONTARIO

LOCATION 600'E, 120'N (DOME BASE LINE) BEARING 168°T HOLE NO. 13-82

LOGGED BY ROSS KIDD ELEVATION _____ DIP -65° FINAL DEPTH 207.0 FEET

STARTED JULY 5TH, 1982 TESTS (CORRECTED) _____

FINISHED JULY 7TH, 1982

CASING PULLED

$207' = -41\frac{1}{2}^{\circ}$

CORE SIZE BQ

FROM	TO	DESCRIPTION
0.0	32.0	<u>CASING</u>
32.0	171.0	<u>ANDESITE</u> SCHISTOSE. CHLORITIC. TUFFACEOUS. VERY SPARSE DISSEMINATED PYRITE. 73'-74': BROKEN UP. SOME FAULT GOUGE.
171.0	207.0	<u>ANDESITE</u> DENSE. LIGHT GREEN. FINE TO MEDIUM GRAINED. CONSIDERABLE QUARTZ-CARBONATE INTRUSION IN STRINGERS AND THREADS, UP TO 1 INCH WIDE. ALMOST NO SULFIDES.
	207.0	<u>END OF HOLE</u>
		<u>SULFIDE ZONE</u>
		<u>120.0' TO 171.0'</u> : (1-2% PYRRHOTITE, PYRITE)
		120.0 - 129.0: A FEW NARROW (2") QUARTZ STRINGERS, MINOR PYRRHOTITE.
		129.0 - 134.0: APPRECIABLE PYRRHOTITE IN THREADS.
		134.0 - 144.0: SEVERAL QUARTZ STRINGERS, MINOR PYRRHOTITE.
		144.0 - 171.0: MINOR PYRRHOTITE IN THREADS AND DISSEMINATIONS.

Ross Kidd

PROPERTY PRICEMORE RESOURCES INC.
FORT HOPE, ONTARIO

PAGE 1 (OF 1)

LOCATION 600'E, 120'N (DOME BASE LINE) BEARING 168°T HOLE NO. 14-82
 (SAME SETUP AS HOLE 13-82)
 LOGGED BY ROSS KIDD ELEVATION _____ DIP -85° FINAL DEPTH 316.0 FEET
 STARTED JULY 7TH, 1982 TESTS (CORRECTED) _____
 FINISHED JULY 11TH, 1982
 CASING PULLED 300' = -73°
 CORE SIZE BQ

FROM	TO	DESCRIPTION
0.0	28.0	<u>CASING</u>
28.0	28.7	<u>WHITE GRANITE BOULDER</u>
28.7	262.0	<u>ANDESITE</u> CHLORITIC. SCHISTOSE. TUFFACEOUS. LIGHT GREY-GREEN. MEDIUM GRAINED. A FEW SCATTERED THREADS OF QUARTZ AND QUARTZ-CARBONATE. VERY SPARSE PYRITE, PYRRHOTITE.
262.0	274.0	<u>ANDESITE</u> DENSE. FINE GRAINED.
274.0	316.0	<u>ANDESITE TUFF</u> THINLY BANDED AT 35° TO CORE. FINE GRAINED.
	316.0	<u>END OF HOLE</u>
		<u>NO OBVIOUS SULFIDE ZONE</u>
		224.0 - 225.5: 12 INCH WHITE QUARTZ VEIN WITH MINOR PYRITE, PYRRHOTITE.
		242.0 - 247.0: TWO 2" QUARTZ STRINGERS, MINOR PYRRHOTITE, PYRITE.
		247.0 - 262.0: MINOR DISSEMINATED PYRRHOTITE, PYRITE.
		278.5 - 283.0: INCLUDES 18 INCH WHITE QUARTZ VEIN WITH SPARSE PYRITE, PYRRHOTITE.
		292.0 - 297.0: SEVERAL 2"-4" QUARTZ STRINGERS, SPARSE PYRRHOTITE, PYRITE.
		297.0 - 302.0: DISSEMINATED PYRRHOTITE, PYRITE.
		(BREAKDOWN FOR 2 SHIFTS, TO REPLACE BEARING IN DRILL MOTOR)

Ross Kidd

HOLE NO. 14-82

PROPERTY PRICEMORE RESOURCES INC.
FORT HOPE, ONTARIO

PAGE 1 (OF 1)

LOCATION 100'E ON DOME BASE LINE. BEARING 168°T HOLE NO. 15-82

LOGGED BY ROSS KIDD ELEVATION _____ DIP -65° FINAL DEPTH 210.0 FEET

STARTED JULY 11TH, 1982 TESTS (CORRECTED) _____

FINISHED JULY 13TH, 1982

CASING PULLED

207' = -55½°

CORE SIZE BQ

FROM	TO	DESCRIPTION
0.0	18.0	<u>CASING</u>
18.0	174.0	<u>ANDESITE</u> FINE TO MEDIUM GRAINED. SCHISTOSE. CHLORITIC. FREQUENT THREADS OF QUARTZ AND QUARTZ-CARBONATE, MAINLY AT 45° TO CORE.
174.0	207.0	<u>DIORITE</u> COARSE GRAINED. LIGHT GREEN. CONSIDERABLE QUARTZ AND QUARTZ-CARBONATE IN THREADS. DARK GREEN STREAKY MOTTLING AT 55° TO CORE. VERY SPARSE PYRITE.
207.0	210.0	<u>ANDESITE</u> MEDIUM GRAINED, GRADUALLY COARSENING TO A MOTTLED DIORITE.
	210.0	<u>END OF HOLE</u>

SULFIDE ZONE

100.0' to 174.0' :

- 100.0 - 110.0: MINOR PYRITE, PYRRHOTITE IN THREADS.
- 110.0 - 115.0: APPRECIABLE PYRITE, PYRRHOTITE IN THREADS AND IN QUARTZ STRINGERS.
- 115.0 - 130.0: DISSEMINATED PYRRHOTITE, PYRITE.
- 130.0 - 135.0: A FEW QUARTZ STRINGERS, MINOR PYRRHOTITE.
- 135.0 - 155.0: DISSEMINATIONS AND PATCHES OF PYRRHOTITE, PYRITE.
- 155.0 - 165.0: 6 INCH QUARTZ VEIN AND SEVERAL ½" STRINGERS, MINOR PYRRHOTITE.
- 165.0 - 169.0: TWO LARGE PATCHES PYRRHOTITE.
- 169.0 - 174.0: SPARSE DISSEMINATED PYRRHOTITE.

HOLE NO. **15-82**

Ross Kidd

PROPERTY PRICEMORE RESOURCES INC.
FORT HOPE, ONTARIO

PAGE 1 (OF 1)

LOCATION 100'E ON DOME BASE LINE BEARING 168°T HOLE NO. 16-82
 (SAME SETUP AS HOLE 15-82)

LOGGED BY ROSS KIDD ELEVATION _____ DIP -85° FINAL DEPTH 300.0 FEET

STARTED JULY 13TH, 1982 TESTS (CORRECTED) _____

FINISHED JULY 15TH, 1982 300' = -62°

CASING _____

CORE SIZE BQ

FROM	TO	DESCRIPTION
0.0	14.0	<u>CASING</u>
14.0	274.0	<u>ANDESITE</u> FINE GRAINED, BECOMING MEDIUM GRAINED AS HOLE DEEPENS. LIGHT GREY. QUITE SOFT. FROM 76' ON, THERE ARE FREQUENT DARK SECTIONS CARRYING MUSCOVITE IN PATCHES, GIVING A MOTTLED APPEARANCE. MOTTLING AND FLOW LINES ARE GENERALLY AT 25° TO CORE. VERY SPARSE PYRITE AND PYRRHOTITE, EXCEPT IN THE TWO SULFIDE ZONES FROM 153-183, AND 210.8-259. THE MOST ANDESITE IS A DARKER GREY WITHIN THE SULFIDE ZONES. 20.8-22.0: WHITE MILKY QUARTZ VEIN, VERY SPARSE SULFIDES.
274.0	300.0	<u>ANDESITE</u> COARSE GRAINED. BIOTITE MOTTLING IN STREAKS AT 50° TO CORE.
	300.0	<u>END OF HOLE</u>

SULFIDE ZONES

153.0' to 183.0' :

153.0 - 171.0: APPRECIABLE PYRRHOTITE, PYRITE, WITH FREQUENT QUARTZ THREADS.

171.0 - 178.0: MINOR PYRRHOTITE, PYRITE.

178.0 - 183.0: APPRECIABLE PYRITE.

210.8' to 259.0' :

210.8 - 233.0: APPRECIABLE PYRRHOTITE, PYRITE, AND FREQUENT QUARTZ CARBONATE THREADS.

233.0 - 259.0 MINOR PYRRHOTITE, PYRITE, IN THREADS AND DISSEMINATIONS.

HOLE NO. 16-82

Ross Kidd

PROPERTY PRICEMORE RESOURCES INC.
FORT HOPE, ONTARIO

PAGE 1 (OF 1)

LOCATION 150'E ON THE DOME BASE LINE BEARING 168°T HOLE NO. 17-82

LOGGED BY ROSS KIDD ELEVATION _____ DIP -65° FINAL DEPTH 197.0 FEET

STARTED JULY 15TH, 1982 TESTS (CORRECTED)

FINISHED JULY 17TH, 1982

CASING PULLED

197' = -43°

CORE SIZE BQ

FROM	TO	DESCRIPTION
0.0	15.0	<u>CASING</u>
15.0	161.0	<u>ANDESITE</u> FINE TO MEDIUM GRAINED. FREQUENT QUARTZ AND QUARTZ-CARBONATE STRINGERS, MAINLY AT 45° TO CORE. SOME SECTIONS OF STREAKY MICA MOTTLING. 25.5-26.1: QUARTZ VEIN, SPARSE PYRITE.
161.0	197.0	<u>DIORITE</u> DENSE. BIOTITIC. LIGHT GREEN. MEDIUM GRAINED. CHLORITE STREAKS AT 75° TO CORE.
	197.0	<u>END OF HOLE</u>

SULFIDE ZONE
64.0' to 161.0':
 64.0-79.0: MINOR PYRRHOTITE, PYRITE.
 79.0-104.0: MINOR PYRRHOTITE, PYRITE IN STREAKS AND DISSEMINATIONS. 1 INCH QUARTZ STRINGER AT 80.5' CARRIES SEVERAL SPECKS OF VISIBLE GOLD.
 104.0-124.0: APPRECIABLE PYRRHOTITE, PYRITE.
 124.0-134.0: MINOR PYRRHOTITE, PYRITE.
 134.0-153.0: APPRECIABLE PYRRHOTITE, PYRITE.
 153.0-161.0: MINOR PYRRHOTITE, PYRITE.

Ross Kidd

HOLE NO. **17-82**

PROPERTY PRICEMORE RESOURCES INC.
FORT HOPE, ONTARIO

PAGE 1 (OF 1)

LOCATION 150' E ON DOME BASE LINE BEARING 168° T HOLE NO. 18-82
 (SAME SETUP AS HOLE 17-82)

LOGGED BY ROSS KIDD ELEVATION _____ DIP -85° FINAL DEPTH 272.0 FEET

STARTED JULY 17TH, 1982 TESTS (CORRECTED)

FINISHED JULY 19TH, 1982

152' = -73°

CASING PULLED

CORE SIZE BQ

FROM	TO	DESCRIPTION
0.0	16.0	<u>CASING</u>
16.0	237.0	<u>ANDESITE</u> FINE TO MEDIUM GRAINED. SCHISTOSE AT 30° TO CORE. SOME BIOTITE SECTIONS. LIGHT GREY, DARKENING IN THE SULFIDE ZONE FROM 119-212.
237.0	272.0	<u>DIORITE</u> COARSE GRAINED. VERY SPARSE PYRITE. CHLORITE STREAKS @ 65° TO CORE.
	272.0	<u>END OF HOLE</u> SOME RODS LEFT IN THE HOLE.
<p><u>SULFIDE ZONE</u></p> <p><u>119.0' TO 212.0'</u>: (ABOUT 4% PYRRHOTITE, PYRITE)</p> <p>119.0 - 124.0: MINOR STREAKY PYRRHOTITE, PYRITE. 124.0 - 139.0: APPRECIABLE PYRRHOTITE, PYRITE. 139.0 - 199.0: MINOR DISSEMINATED PYRRHOTITE, PYRITE 199.0 - 204.0: 10% PYRITE, PYRRHOTITE. 204.0 - 212.0: PATCHY (6%) PYRITE, PYRRHOTITE.</p>		

HOLE NO. **18-82**

D. Kidd

PROPERTY PRICEMORE RESOURCES INC.
FORT HOPE, ONTARIO

PAGE 1 (OF 1)

LOCATION 200'E ON DOME BASE LINE BEARING 168°T HOLE NO. 19-82

LOGGED BY ROSS KIDD ELEVATION _____ DIP -65° FINAL DEPTH 206.0 FEET

STARTED JULY 19TH, 1982 TESTS (CORRECTED) _____

FINISHED JULY 21ST, 1982 206' = -51°

CASING PULLED

CORE SIZE BQ

FROM	TO	DESCRIPTION
0.0	9.0	<u>CASING</u>
9.0	159.5	<u>ANDESITE</u> FINE TO MEDIUM GRAINED. GREEN-GREY. FREQUENT THREADS OF QUARTZ-CARBONATE AT 40°-50° TO CORE. OCCASIONAL SHORT SECTION WITH MICA MOTTLING AT SIMILAR CORE ANGLES.
159.5	206.0	<u>DIORITE</u> COARSE. DARK GREEN MOTTLING, IN A LIGHT GREEN BACKGROUND. VERY SPARSE PYRITE.
	206.0	<u>END OF HOLE</u>

SULFIDE ZONES

60.5' TO 65.5': MINOR PYRRHOTITE, PYRITE.

81.0' TO 90.5': MINOR DISSEMINATED PYRRHOTITE, PYRITE.

103.0' TO 126.0': MINOR STREAKS AND DISSEMINATIONS OF PYRRHOTITE, PYRITE. ABOUT 2% TOTAL SULFIDES. MOST ANDESITE IS DARKER GREY. OCCASIONAL QUARTZ-CARBONATE VEINLET UP TO 1½ INCHES WIDE, AND FAIRLY FREQUENT THREADS OF QUARTZ-CARBONATE, ALL MAINLY AT 50° TO CORE. VERY INFREQUENT BLEB OF CHALCOPYRITE.

Ron Kidd

PROPERTY PRICEMORE RESOURCES INC.
FORT HOPE, ONTARIO

PAGE 1 (OF 1)

LOCATION 50'E ON DOME BASE LINE BEARING 168°T HOLE NO. 20-82

LOGGED BY ROSS KIDD ELEVATION _____ DIP -65° FINAL DEPTH 197.0 FEET

STARTED JULY 21ST, 1982 TESTS (CORRECTED) _____

FINISHED JULY 22ND, 1982

197' =

CASING _____

CORE SIZE BQ

FROM	TO	DESCRIPTION
0.0	19.0	<u>CASING</u>
19.0	168.0	<u>ANDESITE</u> SCHISTOSE. CHLORITIC. FREQUENT THREADS OF QUARTZ-CARBONATE. SPARSE PYRITE. 87.5-88.1: QUARTZ VEIN, MINOR PYRITE.
168.0	197.0	<u>DIORITE</u> COARSE. VERY SPARSE PYRITE.
	197.0	<u>END OF HOLE</u>

SULFIDE ZONE

98.0' TO 117.0':

98.0-103.0: INCLUDES 3 INCH QUARTZ VEIN,
MINOR PYRITE.

103.0-108.0: MINOR PYRRHOTITE IN THREADS.

108.0-113.0: APPRECIABLE PYRITE, PYRRHOTITE.

113.0-117.0: MINOR PYRRHOTITE.

Ross Kidd

HOLE NO. **20-82**

PROPERTY PRICEMORE RESOURCES INC.
FORT HOPE, ONTARIO

PAGE 1 (OF 1)

LOCATION 50' E ON DOME BASE LINE BEARING 168° T HOLE NO. 21-82
 (SAME SETUP AS HOLE 20-82)

LOGGED BY ROSS KIDD ELEVATION _____ DIP -85° FINAL DEPTH 307.0 FEET

STARTED JULY 23RD, 1982 TESTS (CORRECTED) _____

FINISHED JULY 25TH, 1982

CASING _____ 307' = -64°

CORE SIZE BQ

FROM	TO	DESCRIPTION
0.0	20.0	<u>CASING</u>
20.0	265.0	<u>ANDESITE</u> SCHISTOSE. CHLORITIC. SCHIST PLANES @ 25° TO CORE. SCATTERED THREADS AND STRINGERS OF QUARTZ AND QUARTZ-CARBONATE. VERY SPARSE PYRITE, EXCEPT IN SULFIDE ZONE DESCRIBED BELOW. 154.5' - 168.0': WHITE MILKY QUARTZ VEIN WITH PATCHES OF PYRITE NEAR THE WALLS. BOTH CONTACTS @ 60° TO CORE.
265.0	307.0	<u>DIORITE</u> COARSE. LIGHT GREEN, WITH DARK MOTTLING. VERY SPARSE PYRITE.
	307.0	<u>END OF HOLE</u>
		<u>QUARTZ VEIN</u> 154.5' - 168.0': MILKY, PATCHY PYRITE NEAR BOTH CONTACTS.
		<u>SULFIDE ZONE</u> <u>194.0' - 214.0'</u> : MINOR DISSEMINATED PYRRHOTITE, A FEW QUARTZ-CARBONATE THREADS. 252.5' - 253.5': MINOR PYRRHOTITE, CHALCOPYRITE, IN QUARTZ STRINGERS.

Ross Kidd

PROPERTY PRICEMORE RESOURCES INC.
FORT HOPE, ONTARIO

PAGE 1 (OF 1)

LOCATION 1355'E, 155'N (DOME BASE LINE) BEARING 180°T HOLE NO. 22-82

LOGGED BY ROSS KIDD ELEVATION _____ DIP -50° FINAL DEPTH 257.0 FEET

STARTED JULY 25TH, 1982 TESTS (CORRECTED) _____

FINISHED JULY 26TH, 1982

CASING PULLED

257' = -45°

CORE SIZE BQ

FROM	TO	DESCRIPTION
0.0	35.0	<u>CASING</u>
35.0	179.0	<u>ANDESITE</u> SCHISTOSE. CHLORITIC. MANY THREADS QUARTZ-CARBONATE. SPARSE PYRITE. A FEW SCATTERED QUARTZ STRINGERS UP TO 2 INCHES IN WIDTH, WITH A LITTLE PYRRHOTITE. 132.5'-133.7': WHITE QUARTZ VEIN, WITH SPARSE PYRRHOTITE.
179.0	213.5	<u>DIORITE</u> MASSIVE. MEDIUM GRAINED. SPARSE PYRRHOTITE, PYRITE.
213.5	217.0	<u>ANDESITE</u> CHLORITIC.
217.0	230.0	<u>DIORITE</u> MASSIVE. MEDIUM GRAINED.
230.0	257.0	<u>ANDESITE</u> SCHISTOSE. CHLORITIC. 241.0'-242.0': WHITE QUARTZ VEIN WITH MINOR PYRITE, PYRRHOTITE.
	257.0	<u>END OF HOLE</u>

NO SULFIDE ZONE.

Ross Kidd

PROPERTY PRICEMORE RESOURCES INC.
FORT HOPE, ONTARIO

PAGE 1 (OF 1)

LOCATION 2030'E, 2130'N (DOME BASE LINE) BEARING 165°T HOLE NO. 23-82

LOGGED BY ROSS KIDD ELEVATION _____ DIP -50° FINAL DEPTH 247.0 FEET

STARTED JULY 28TH, 1982 TESTS (CORRECTED) _____

FINISHED JULY 30TH, 1982

CASING PULLED

247' = -44°

CORE SIZE BQ

FROM	TO	DESCRIPTION
0.0	51.0	<u>CASING</u>
51.0	102.5	<u>GABBRO</u> MASSIVE AND DENSE. COARSE GRAINED. MOTTLED. SLIGHTLY MAGNETIC. VIRTUALLY NO SULFIDES.
102.5	120.0	<u>ANDESITE</u> SCHISTOSE. CHLORITIC. FLOW LINES AND SCHIST PLANES @ 60° TO CORE. VERY SPARSE PYRITE. A FEW SCATTERED THREADS OF QUARTZ AND QUARTZ-CARBONATE.
120.0	247.0	<u>GABBRO</u> MASSIVE AND DENSE. COARSE GRAINED. SAME ROCK AS THE 51.0-102.5 SECTION.
	247.0	<u>END OF HOLE</u>
		117.0' - 119.0': SEVERAL QUARTZ AND QUARTZ CARBONATE VEINLETS. VERY SPARSE PYRITE.

Ross Kidd

PROPERTY PRICEMORE RESOURCES INC.
FORT HOPE, ONTARIO

PAGE 1 (OF 1)

LOCATION 2540'E, 2280'N (DOME BASE LINE) BEARING 165°T HOLE NO. 24-82

LOGGED BY ROSS KIDD ELEVATION _____ DIP -50° FINAL DEPTH 257.0 FEET

STARTED JULY 31ST, 1982 TESTS (CORRECTED) _____

FINISHED AUGUST 2ND, 1982

CASING PULLED

CORE SIZE BQ

257' = -50°

FROM	TO	DESCRIPTION
0.0	66.0	<u>CASING</u>
66.0	257.0	<u>GABBRO</u> COARSE GRAINED. DENSE. VERY SPARSE PYRITE. QUITE MAGNETIC.
	257.0	<u>END OF HOLE</u>
NO SAMPLES TAKEN.		

Ross Kidd

PROPERTY PRICEMORE RESOURCES INC.
FORT HOPE, ONTARIO

PAGE 1 (OF 1)

LOCATION 2340'E, 400'N (DOME BASE LINE) BEARING 170°T HOLE NO. 25-82

LOGGED BY ROSS KIDD ELEVATION _____ DIP -50° FINAL DEPTH 237.0 FEET

STARTED AUGUST 4TH, 1982 TESTS (CORRECTED) _____

FINISHED AUGUST 8TH, 1982

CASING PULLED

237' = -45°

CORE SIZE BQ

FROM	TO	DESCRIPTION
0.0	23.0	<u>CASING</u>
23.0	230.0	<u>ANDESITE</u> SCHISTOSE. CHLORITIC. VERY SPARSE PYRITE, PYRRHOTITE. 91.0-96.0: DIABASE DIKE. 182.0'-187.0': WHITE QUARTZ VEIN, SPARSE PYRITE.
230.0	237.0	<u>DIORITE</u> LIGHT GREEN. MOTTLED. VERY SPARSE PYRITE, PYRRHOTITE.
	237.0	<u>END OF HOLE</u>

SULFIDE ZONE
160.0' to 190.0':
 160.0-182.0: MINOR PYRRHOTITE, PYRITE, AND FREQUENT QUARTZ-CARBONATE STRINGERS.
 182.0-190.0: WHITE QUARTZ VEIN, MINOR PYRITE.

ALL THE CORE WAS CLOSELY FRACTURED AND BLOCKY, SUGGESTING THAT A STRONG FAULT EXISTS IN THE VICINITY, PERHAPS ALONG THE CROSS-TRENDING MAGNETIC HIGH NEARBY.

Ross Kidd

HOLE NO. **25-82**

596337

596336

596333



TRUE

582444

582441

582438

596334

INDIAN
RESERVE
NO. 64

51° 35' N

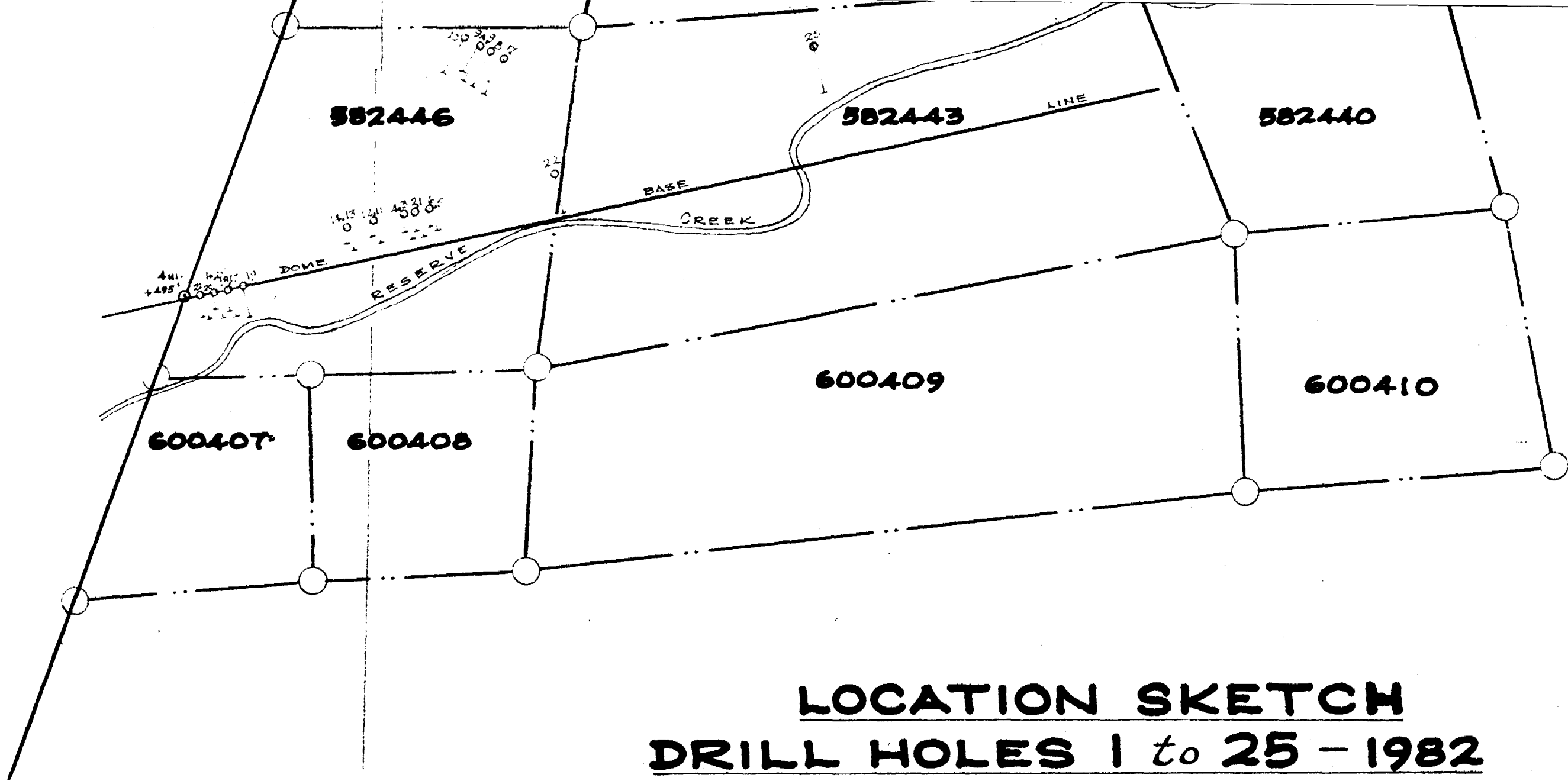
582445

582442

582439

596335





LOCATION SKETCH
DRILL HOLES 1 to 25 - 1982
PRICEMORE RESOURCES INC.

RESERVE CREEK FORT HOPE AREA ONTARIO

DUP

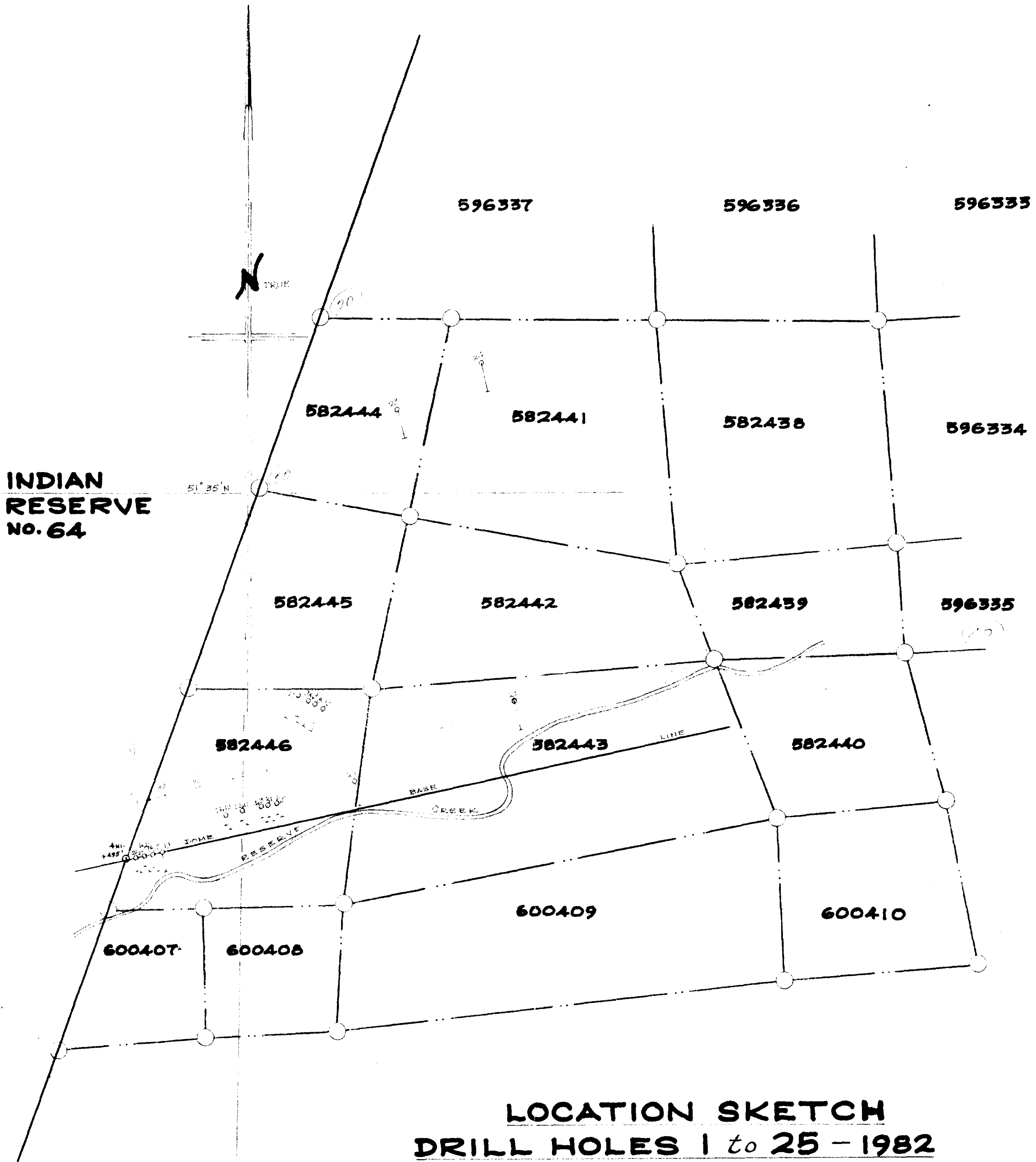
SCALE: 1 INCH = 400 FEET

NTS 42 M 12

SEPTEMBER, 1982

Ross Kidd
ROSS KIDD
MINING ENGINEER

87.44' W



**LOCATION SKETCH
 DRILL HOLES 1 to 25 - 1982
 PRICEMORE RESOURCES INC.**

RESERVE CREEK FORT HOPE AREA ONTARIO

SCALE: 1 INCH = 400 FEET



200

NTS 42 M 12

Ross Kidd
**ROSS KIDD
 MINING ENGINEER**

SEPTEMBER, 1982