



52A04SW0115 14 PARDEE

010

Diamond Drilling

Township of PARDEE

Report NO: 14

Work performed by: Great Lakes Nickel Corporation

Claim NO	Hole NO	Footage	Date	Note
TB.109399	A	576'	1965	(1)
	C	933'	Sept/65	
	D	1095'	1965	
TB 109400	B	502'	1965	
TB 109401	F	956'	Dec/65	(1)
	5	4062		

Notes: (1) See Pardee #16 for location.

Pardee Twp.

Diamond Drill Hole Record

T.B. 109399

Hole No. A LAT. - 6690N DEP. - 6760E VERTICAL Sheet No. 1.

FROM - TO	FORMATION	SAMPLE NO.	CORE LENGTH	GOLD OZ-TON	SILVER OZ-TON	COPPER %	LEAD %	ZINC %
0-4	CASING							
4-264	ANORTHOSITIC GABBRO CONTAINING MINOR CHLORITE							
264-542	ANORTHOSITIC GABBRO CONTAINING SCATTERED SULPHIDES OF CHALCOPRYTE, PENTLANDITE AND PYRROTITE							
542-576	GABBRO BECOMES VERY FINE GRAINED AND THIS SECTION APPEARS TO BE A MIXTURE OF CHILLED FINE GRAINED GABBRO AND ALTERED ARGILLITE							
576	END OF HOLE							
	LOGGED BY James Aubrey M Craig P Eng. Phd.							
	1-5-86							

Diamond Drill Hole Record

Hole No. *A*

Sheet No. *2*

FROM - TO	FORMATION	SAMPLE NO.	CORE LENGTH	GOLD OZ-TON	SILVER OZ-TON	COPPER %	LEAD %	ZINC %
	<i>SAMPLES CUT</i>							
<i>305-315</i>		<i>A-101</i>	<i>10'</i>					
<i>315-319</i>		<i>A-102</i>	<i>4'</i>					
<i>319-329</i>		<i>A-103</i>	<i>10'</i>					
<i>329-339</i>		<i>A-104</i>	<i>10'</i>					
<i>339-349</i>		<i>A-105</i>	<i>10'</i>					
<i>349-362</i>		<i>A-106</i>	<i>13'</i>					
<i>362-372</i>		<i>A-107</i>	<i>10'</i>					
<i>372-382</i>		<i>A-108</i>	<i>10'</i>					
<i>382-392</i>		<i>A-109</i>	<i>10'</i>					
<i>392-402</i>		<i>A-110</i>	<i>10'</i>					
<i>402-412</i>		<i>A-111</i>	<i>10'</i>					
<i>412-422</i>		<i>A-112</i>	<i>10'</i>					
<i>422-432</i>		<i>A-113</i>	<i>10'</i>					
<i>432-442.5</i>		<i>A-114</i>	<i>10.5'</i>					
<i>James Aubrey M. Craig</i>								

Pardee. Twp.

Diamond Drill Hole Record

T.B. 109400

Hole No. B

LAT. 6170N

DEP. 6700E - VERTICAL

Sheet No. 1

FROM - TO	FORMATION	SAMPLE NO.	CORE LENGTH	GOLD OZ-TON	SILVER OZ-TON	COPPER %	LEAD %	ZINC %
0-4	CASING							
4-260	ANORTHOSITIC GABBRO							
260-408	ANORTHOSITIC GABBRO CONTAINING SCATTERED SULPHIDES OF CHALCOPYRITE, PENTLANDITE AND PYRRHOTITE							
408-414	SAME AS ABOVE BUT ONLY OCCASSIONAL SULPHIDES							
414	ARGILLITE CONTACT							
414-439	ARGILLITE							
439-480	SLATE							
480-493	ARGILLITE							
493-502	INTERLAYERED ARGILLITES AND SLATES.							
502	END OF HOLE							
	LOGGED BY James Auley McCraig P. Eng. Phd.							

Diamond Drill Hole Record

Hole No. **B**

Sheet No. **2**

FROM - TO	FORMATION	SAMPLE NO.	CORE LENGTH	GOLD OZ-TON	SILVER OZ-TON	COPPER %	LEAD %	ZINC %
	<i>SAMPLES CUT</i>							
260-270		B1	10'					
270-280		B-2	10'					
280-290		B-3	10'					
290-300		B-4	10'					
300-310		B-5	10'					
310-320		B-6	10'					
320-331		B-7	11'					
331-341		B-8	10'					
341-351		B9	10'					
351-361		B10	10'					
361-371		B11	10'					
371-381		B12	10'					
381-391		B13	10'					
391-401		B-14	10'					
401-408		B-15	7'					
<p style="font-size: 2em; font-family: cursive;">James Aubrey McCraig Phd. Beng.</p>								

Pardee Twp.

T.B. 109399

CORE SIZE 1 1/4" φ

DIAMOND DRILL RECORD

PROPERTY

Great Lakes Nickel Corp.

HOLE NO. C

SHEET NUMBER One

SECTION FROM 0 TO 775

STARTED Sept. 16, 1965

LATITUDE 6748.25 N

DATUM

COMPLETED Sept. 28, 1965

DEPARTURE 7125.52 E

BEARING

ULTIMATE DEPTH 933'

ELEVATION 1524.65

DIP Vertical

PROPOSED DEPTH 933'

DEPTH FEET	FORMATION	SAMPLE NO.	WIDTH OF SAMPLE	GOLD g	SLUDGE GOLD g
0-3	CASING				
3-180	MEDIUM GRAINED ANORTHOSITIC GABBRO				
180-184	ALTERED ANORTHOSITIC GABBRO CONTAINING CHLORITE				
184-191	MASSIVE ANORTHOSITIC GABBRO				
191-194	ALTERED ANORTHOSITIC GABBRO CONTAINING CHLORITE				
194-347	ANORTHOSITIC GABBRO				
347-362	ALTERED ANORTHOSITIC GABBRO CONTAINING CHLORITE				
362-377	TYPICAL MASSIVE ANORTHOSITIC GABBRO				
377-400	ANORTHOSITIC GABBRO - SPARSELY MINERALIZED WITH SULPHIDES				
400-775	ANORTHOSITIC GABBRO CONTAINING SPOTS AND PATCHES OF SULPHIDES ABOUT 2 TO 6% CONSISTING OF CHALCOPYRITE, PIRRHOTITE, PENTLANDITE AND PYRITE.				

N.M.P. TORONTO-STOCK FORM NO. 501 REV. 12/51

DRILLED BY GREAT LAKES NICKEL CORP.

SIGNED James Aubrey McKeig Phd.

Diamond Drill Hole Record

Hole No.

D

Sheet No.

2

FROM - TO	FORMATION	SAMPLE NO.	CORE LENGTH	GOLD OZ-TON	SILVER OZ-TON	COPPER %	LEAD %	ZINC %
623 - 628	Gabbro finer grained and only a few disseminated flecks and patches of sulphides.							
628 - 640	Anorthoritic gabbro containing about 5% or more sulphides							
640 - 670	Anorthoritic gabbro but only about 2% sulphides.							
670 - 703	Sulphide mineralization appears to be increasing.							
703 - 795	Very good sulphide mineralization more than 5%.							
795 - 830	Very finely disseminated sulphides in gabbro.							
830 - 895	Medium grained gabbro containing specks and splashes of sulphides.							
895 - 939	Same as above.							
939 - 939.5	Veinlet of red calcite.							
939.5 - 993	Gabbro contains about 5% sulphides							
993 - 1009	Same as above but slightly less sulphides present.							
1009 - 1095	Medium grained gabbro with finely disseminated sulphides.							
<p><i>logged by James Aubrey McCraig Phd, P. Eng</i></p>								

Parsons Twp.

T.B. 109401

CORE SIZE 1 1/4"

DIAMOND DRILL RECORD

PROPERTY Great Lakes Nickel HOLE NO. F

SHEET NUMBER One SECTION FROM 0 TO 943 STARTED December 8, 1965
 LATITUDE 6118.61 N DATUM _____ COMPLETED December 18, 1965
 DEPARTURE 7915.95 E BEARING _____ ULTIMATE DEPTH ~~943~~ 956
 ELEVATION 1631.84 DIP Vertical PROPOSED DEPTH _____

DEPTH FEET	FORMATION	SAMPLE NO.	WIDTH OF SAMPLE	GOLD g	SLUDGE GOLD g
0-4	CASING				
4-332	MEDIUM TO COARSE GRAINED ANORTHOSITIC GABBRO				
332-333	CHLORITE ALTERATION DOMINANT				
333-450	ANORTHOSITIC GABBRO				
450-463	HIGHLY ALTERED ANORTHOSITIC GABBRO CONTAINING CHLORITE, SERPENTINE AND QUARTZ VEINLETS				
463-534	ANORTHOSITIC GABBRO CONTAINING SCATTERED AREAS WITH CHLORITE ALTERATION				
534-715	MASSIVE LIGHT COLOURED ANORTHOSITIC GABBRO				
715-744	ALTERED GABBRO CONTAINING CHLORITE ALTERATION AND QUARTZ VEINLETS				
744-940	MASSIVE GREY ANORTHOSITIC GABBRO CONTAINING 2 TO 5% SULPHIDES IN SCATTERED PATCHES AND SPOTS. - SULPHIDES				

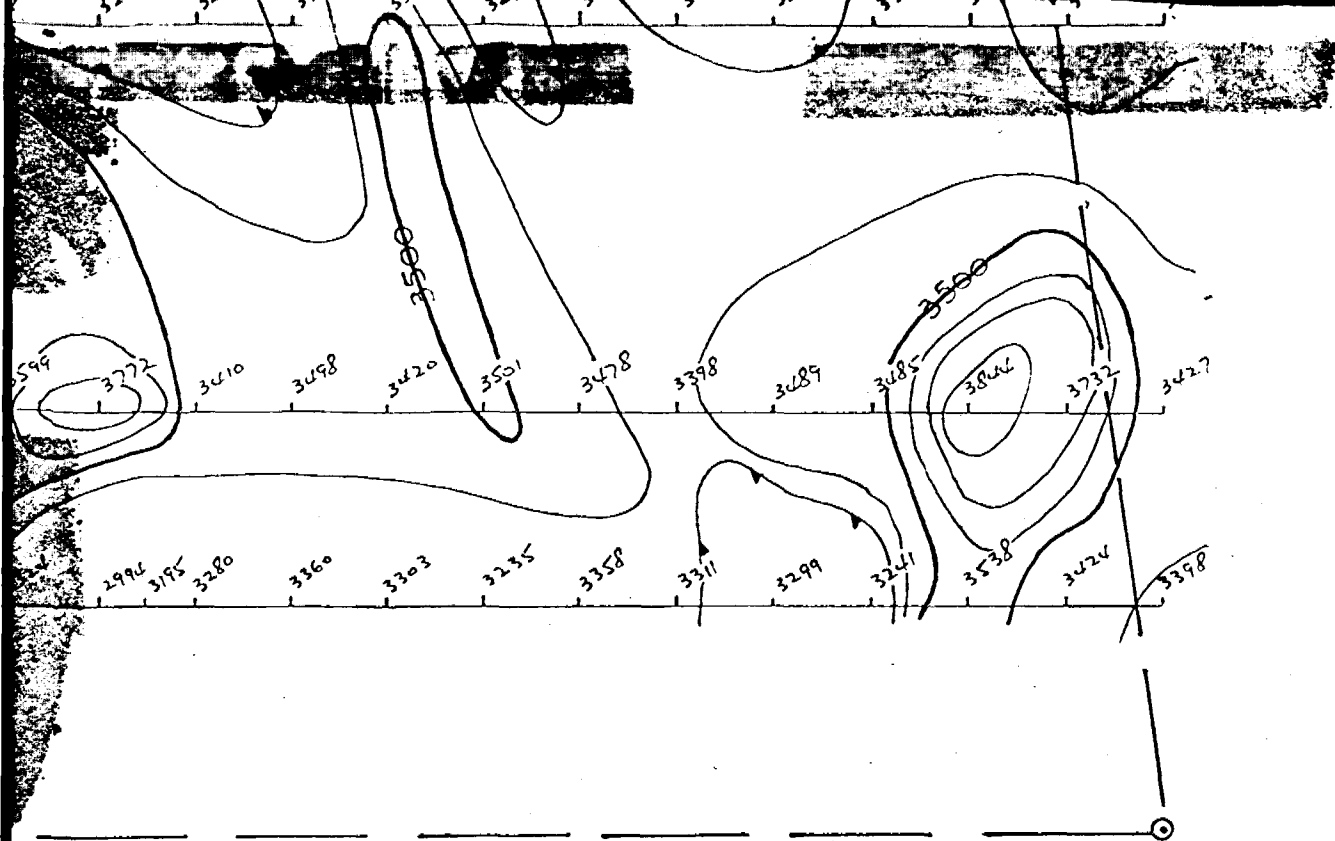
N.M.P. TORONTO-STOCK FORM NO. 501 REV. 12/51

DRILLED BY

GREAT LAKES NICKEL CORP, LTD,

SIGNED

James Aubrey McCraig, Phd.



HANNA GOLD MINES LTD

GROUND MAGNETOMETER SURVEY

PORT ARTHUR MINING DIVISION

PARDEE TWP.

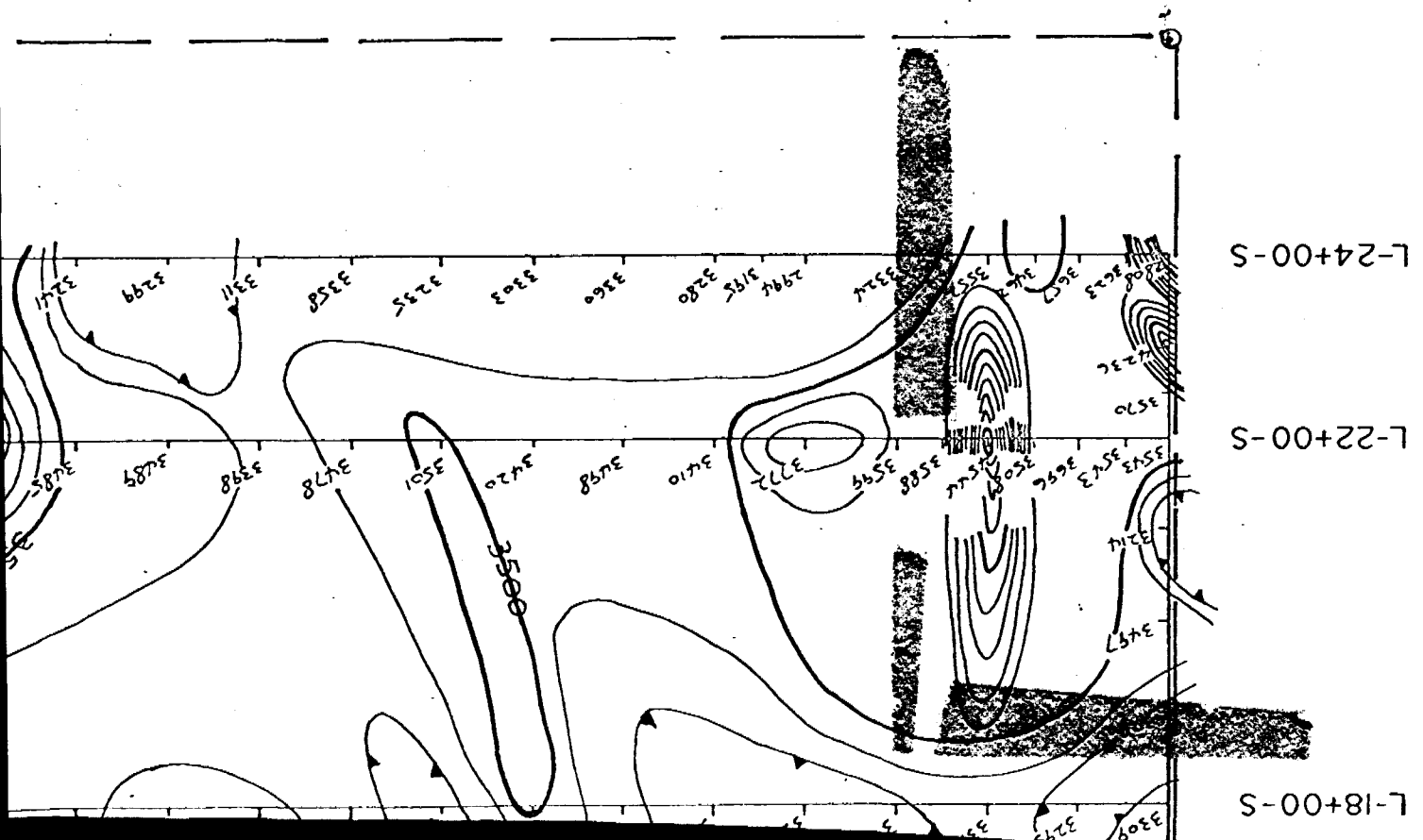
SCALE: 1"=200'

Contour Interval: 100 gammas

Charles A. DeGroot
J.H. Faulkner

DRAWN BY: F.H.F.	DATE: AUG., 1967	N.T.S. 52A4
---------------------	---------------------	----------------

Charles D. ...
211 ...



L-24+00-S

L-22+00-S

L-18+00-S

L-2+00-S

TB 113848

L-6+00-S

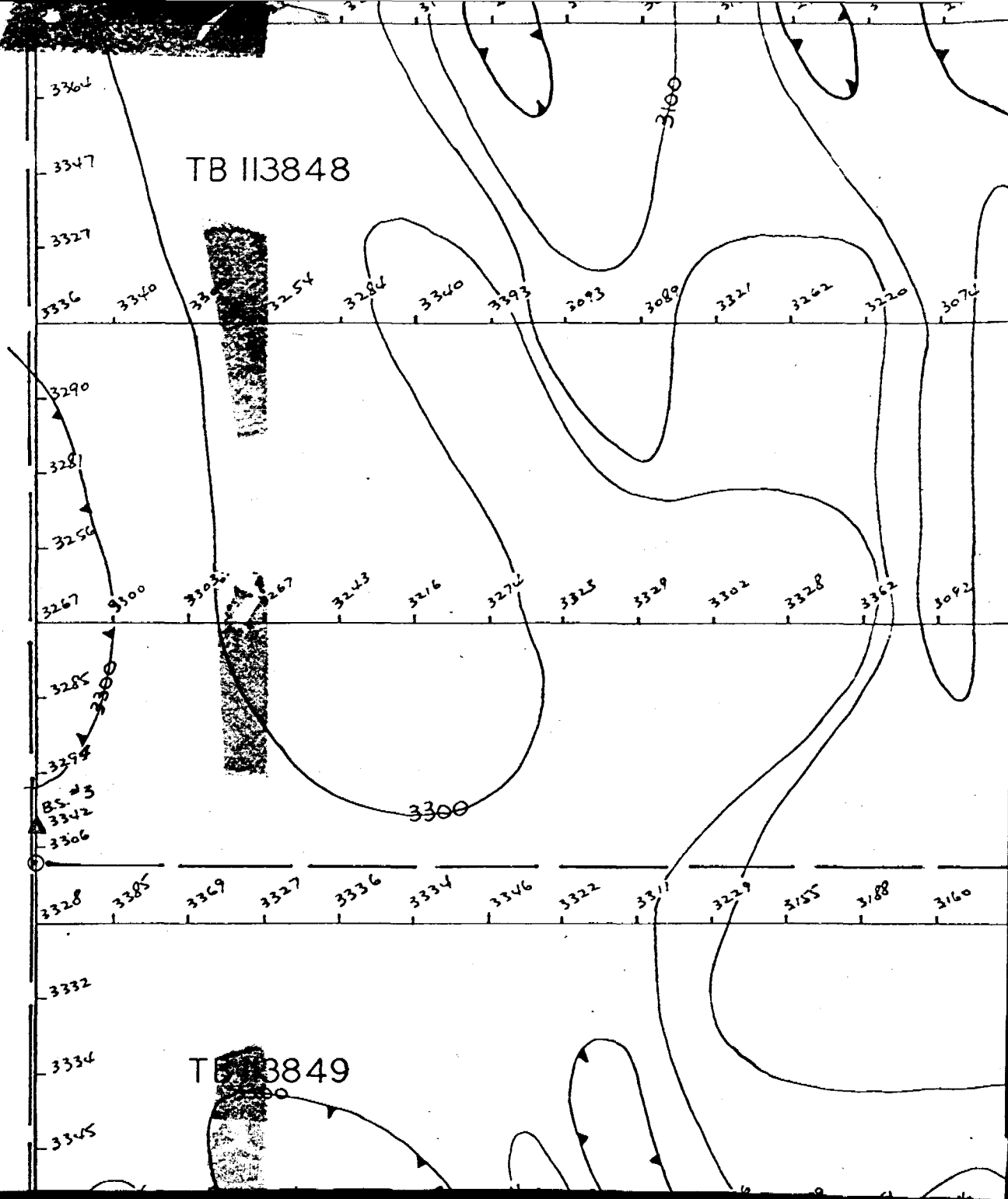
L-10+00-S

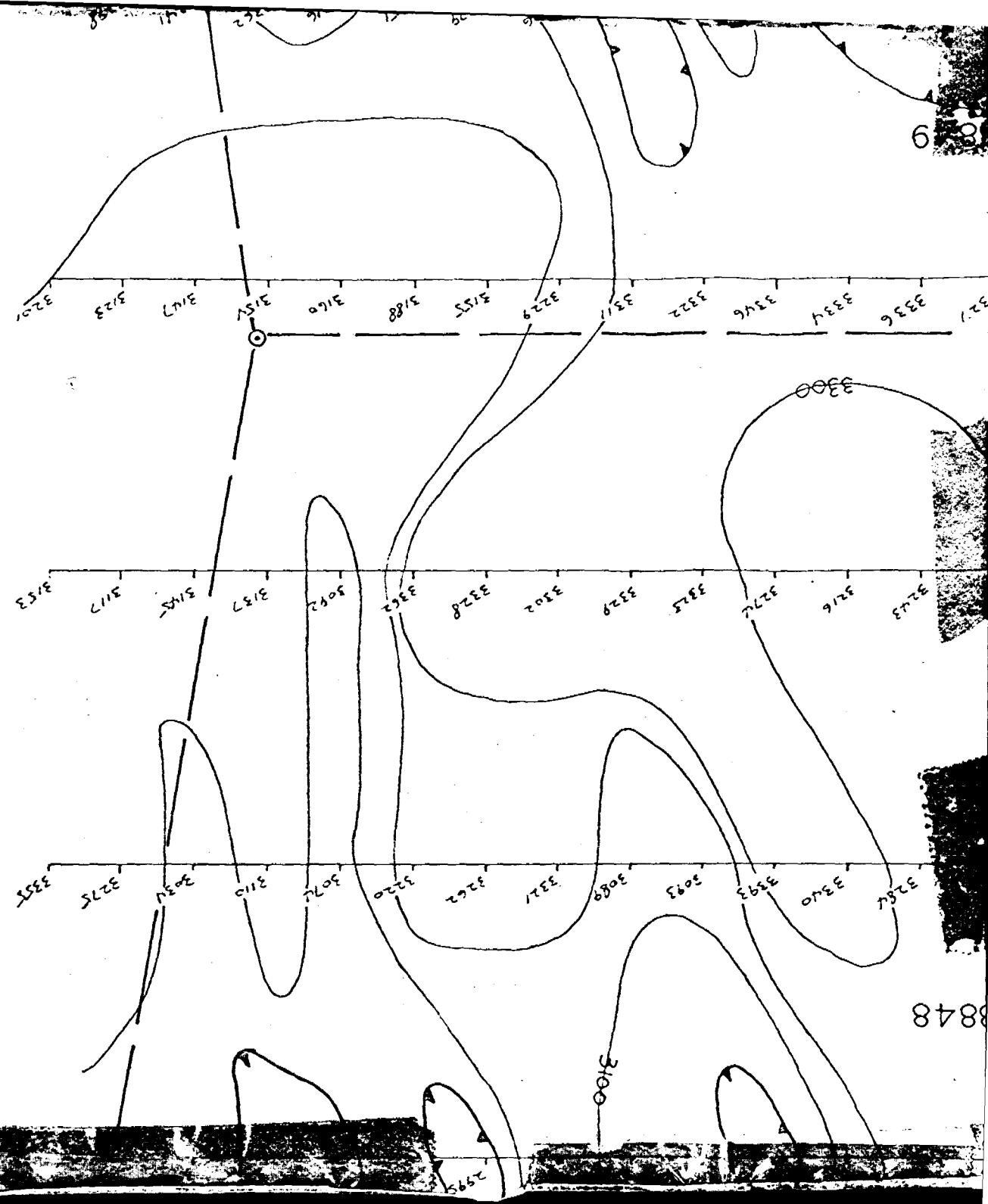
L-14+00-S

TB 113849

3364
 3347
 3327
 3336
 3290
 3287
 3250
 3267
 3285
 3394
 BS #3
 3342
 3306
 3332
 3334
 3345

3340
 3336
 3254
 3284
 3340
 3393
 3093
 3080
 3321
 3262
 3220
 3072
 3300
 3303
 3267
 3243
 3216
 3272
 3325
 3329
 3302
 3328
 3362
 3092
 3328
 3385
 3369
 3327
 3336
 3334
 3346
 3322
 3311
 3229
 3155
 3188
 3160

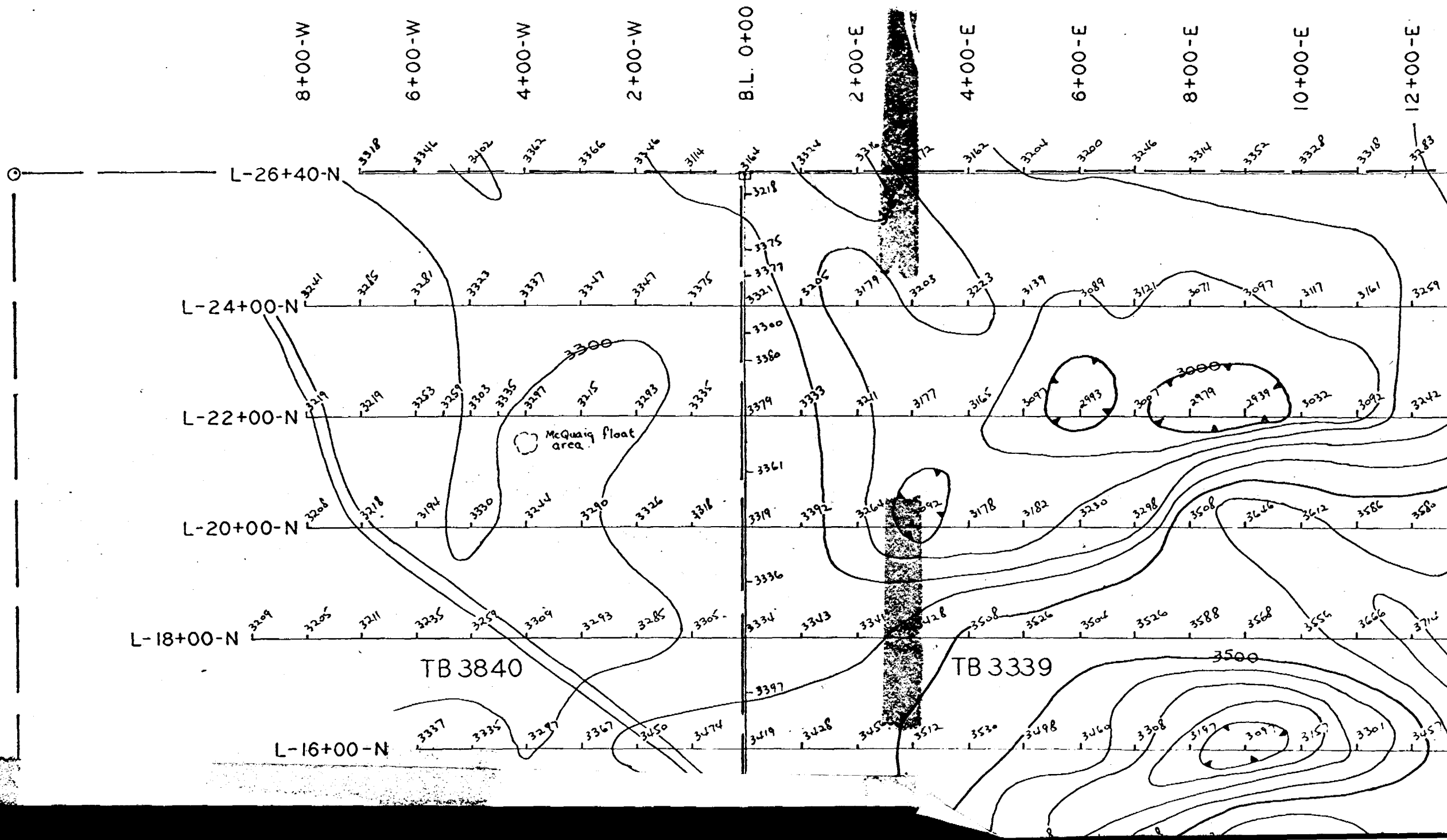




HWY. 593

8848

6 3



L-12+00-N

L-10+00-N

L-8+00-N

L-6+00-N

L-4+00-N

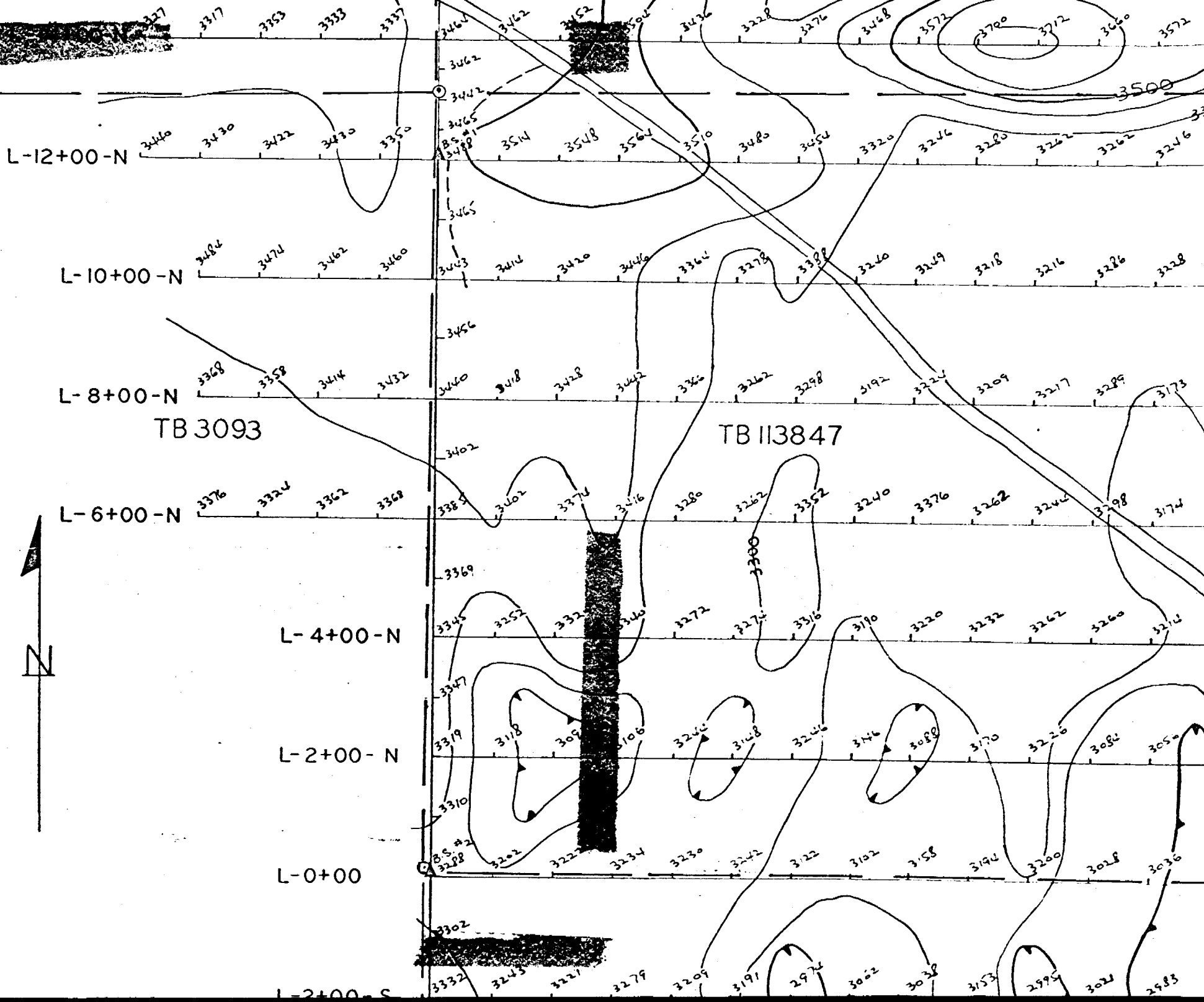
L-2+00-N

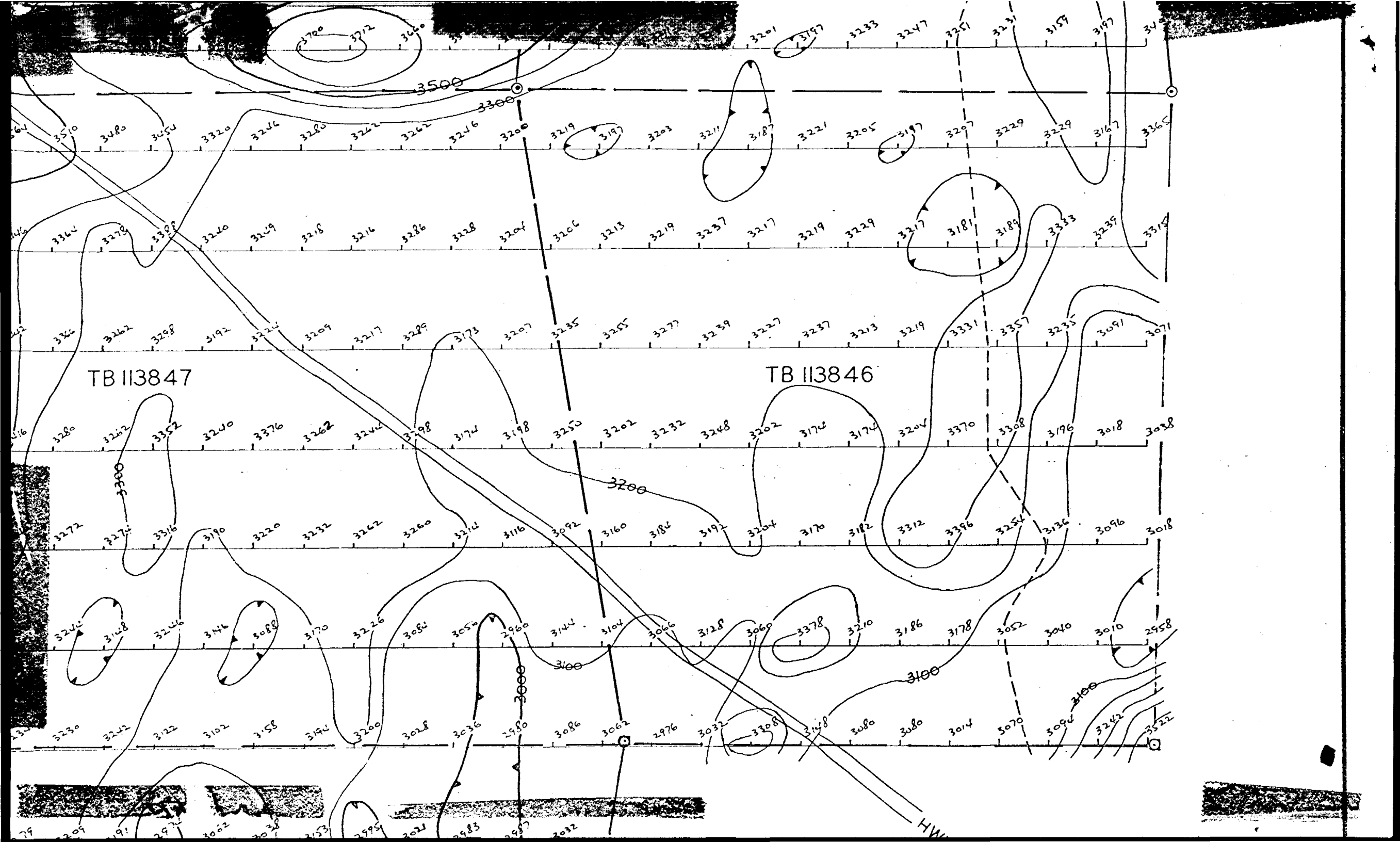
L-0+00

L-2+00-S

TB 3093

TB 113847

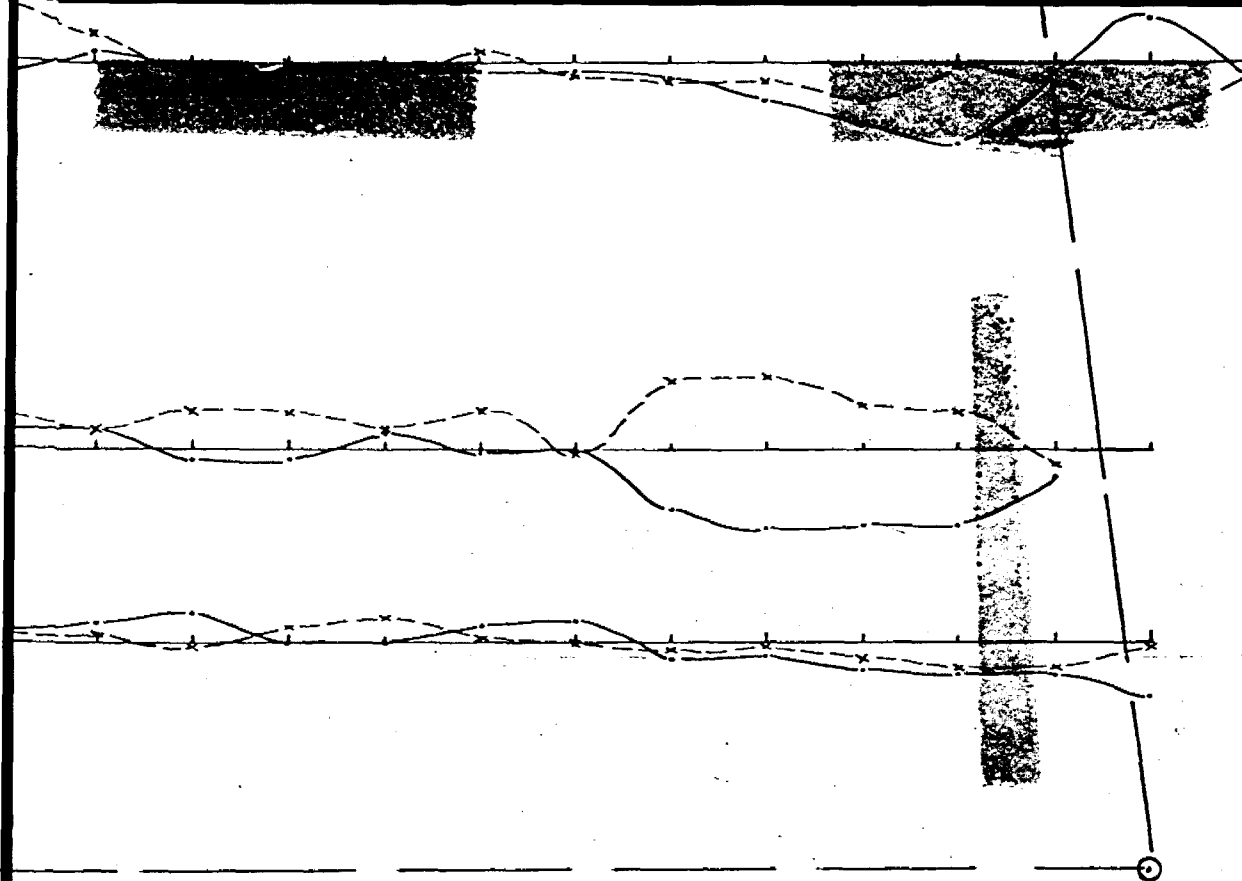




TB 113847

TB 113846

HW



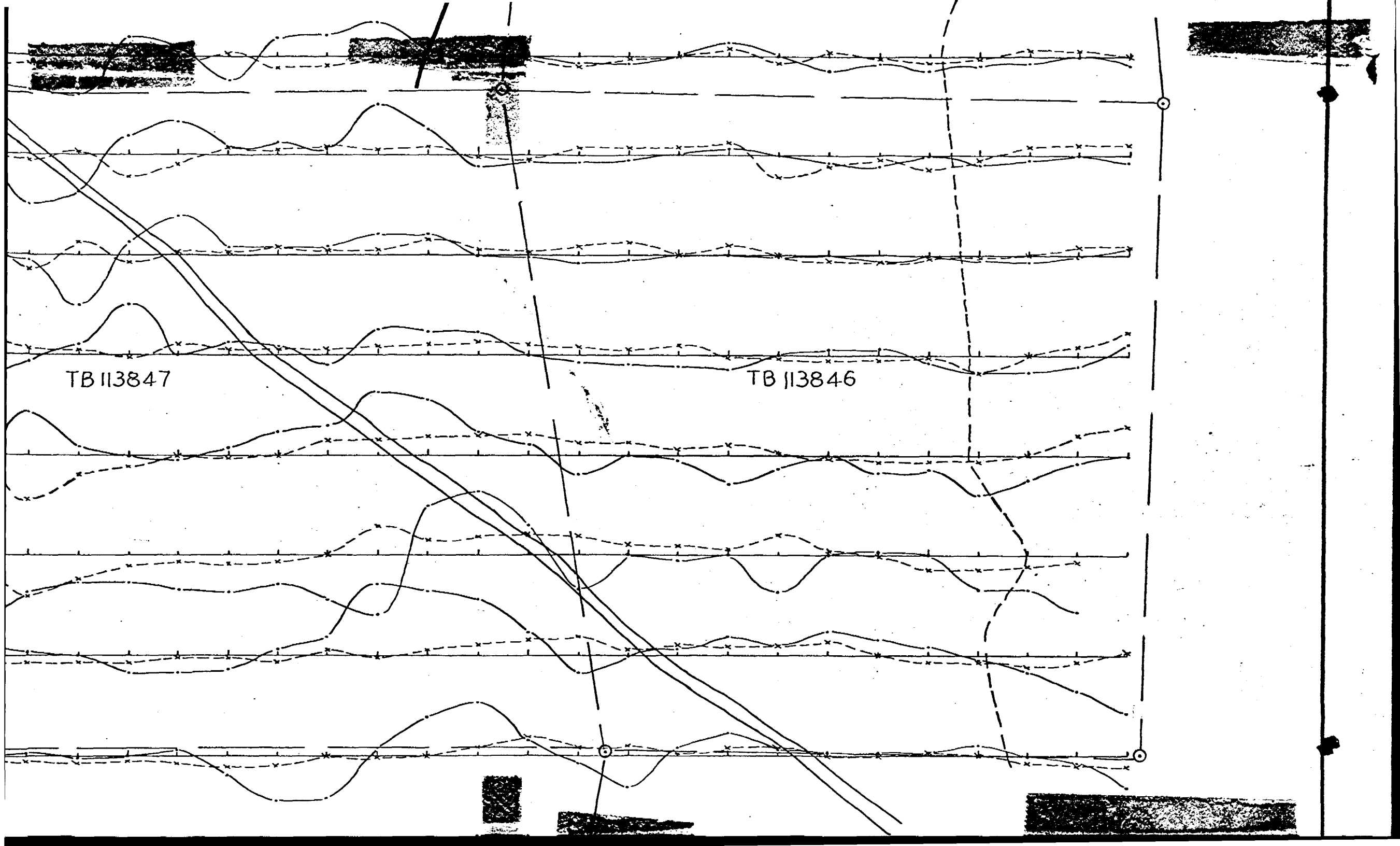
+ in phase
 - - - - - quadrature

E.M. CONDUCTOR
Charles D. [Signature]
J.H. Joubert

HANNA GOLD MINES LTD		
VLF GROUND EM16 SURVEY		
PORT ARTHUR MINING DIVISION		
PARDEE TWP.		
SCALE : 1" = 200' 1" = 40%		
STATION: NBA		FACING EAST
DRAWN BY: F.H.F.	DATE: AUG., 1967	N.T.S. 52 A 4

TB 113847

TB 113846



L-14+00-N

L-12+00-N

L-10+00-N

L-8+00-N

L-6+00-N

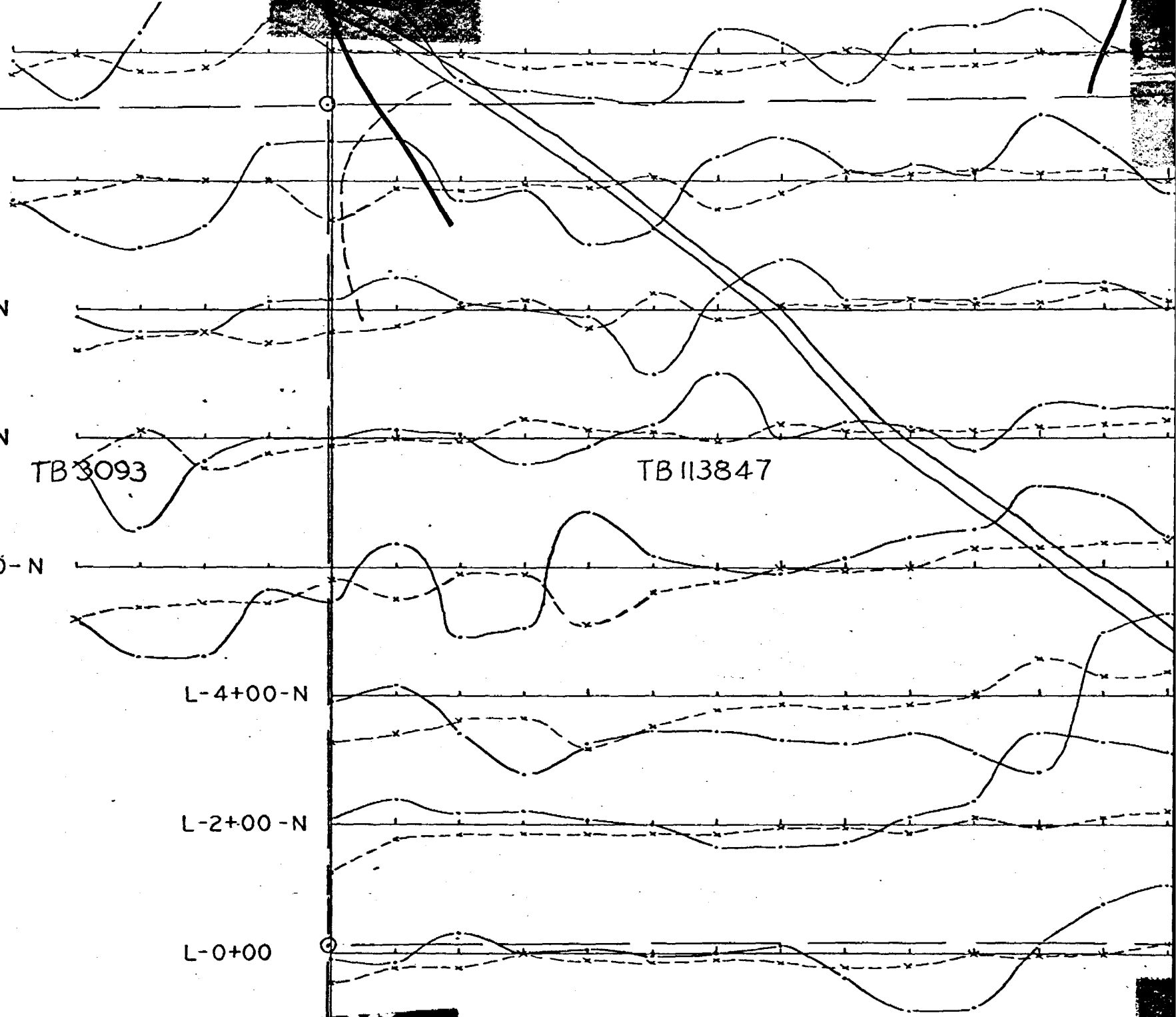
L-4+00-N

L-2+00-N

L-0+00

TB 3093

TB 113847



L-2+00-S

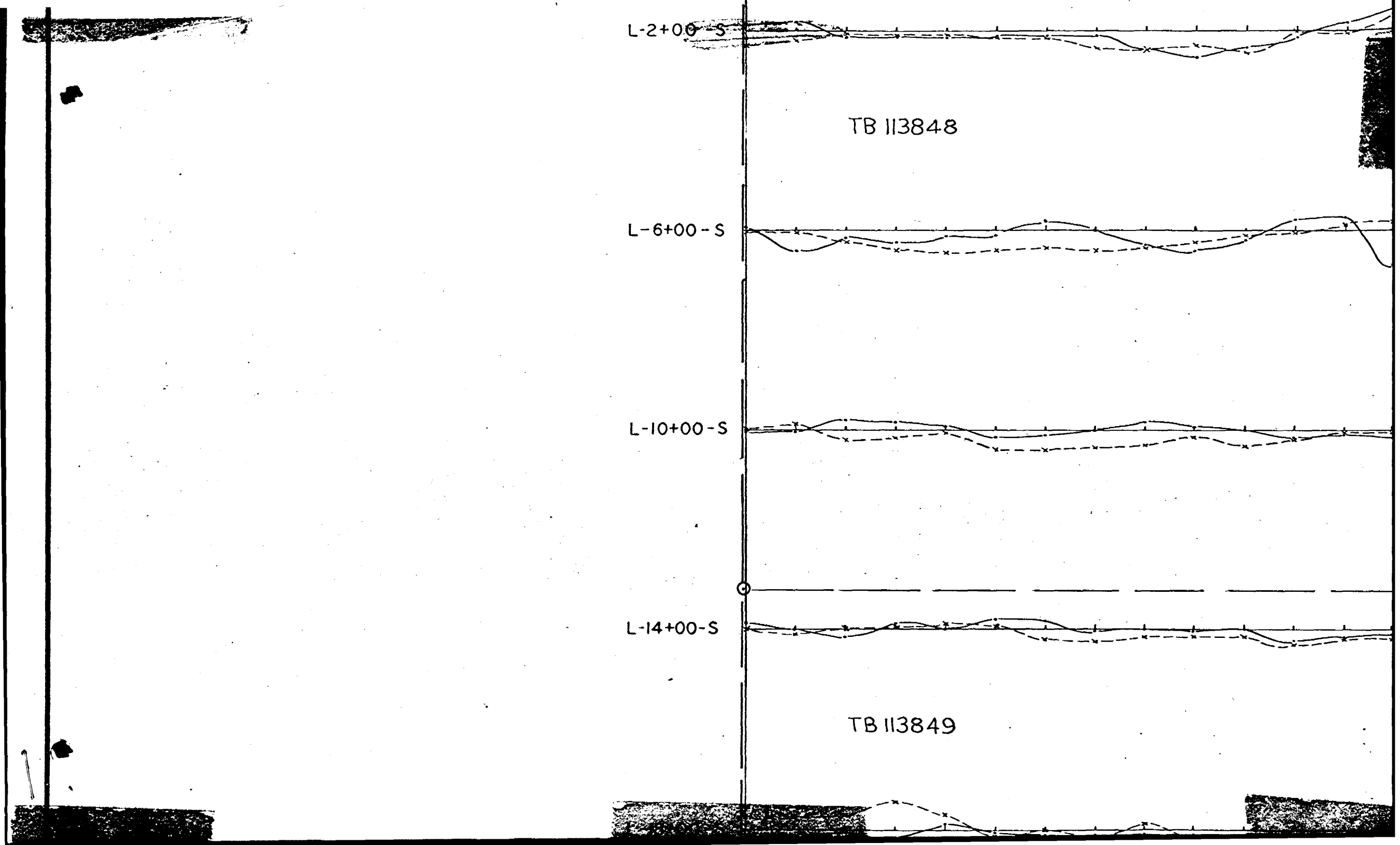
TB 113848

L-6+00-S

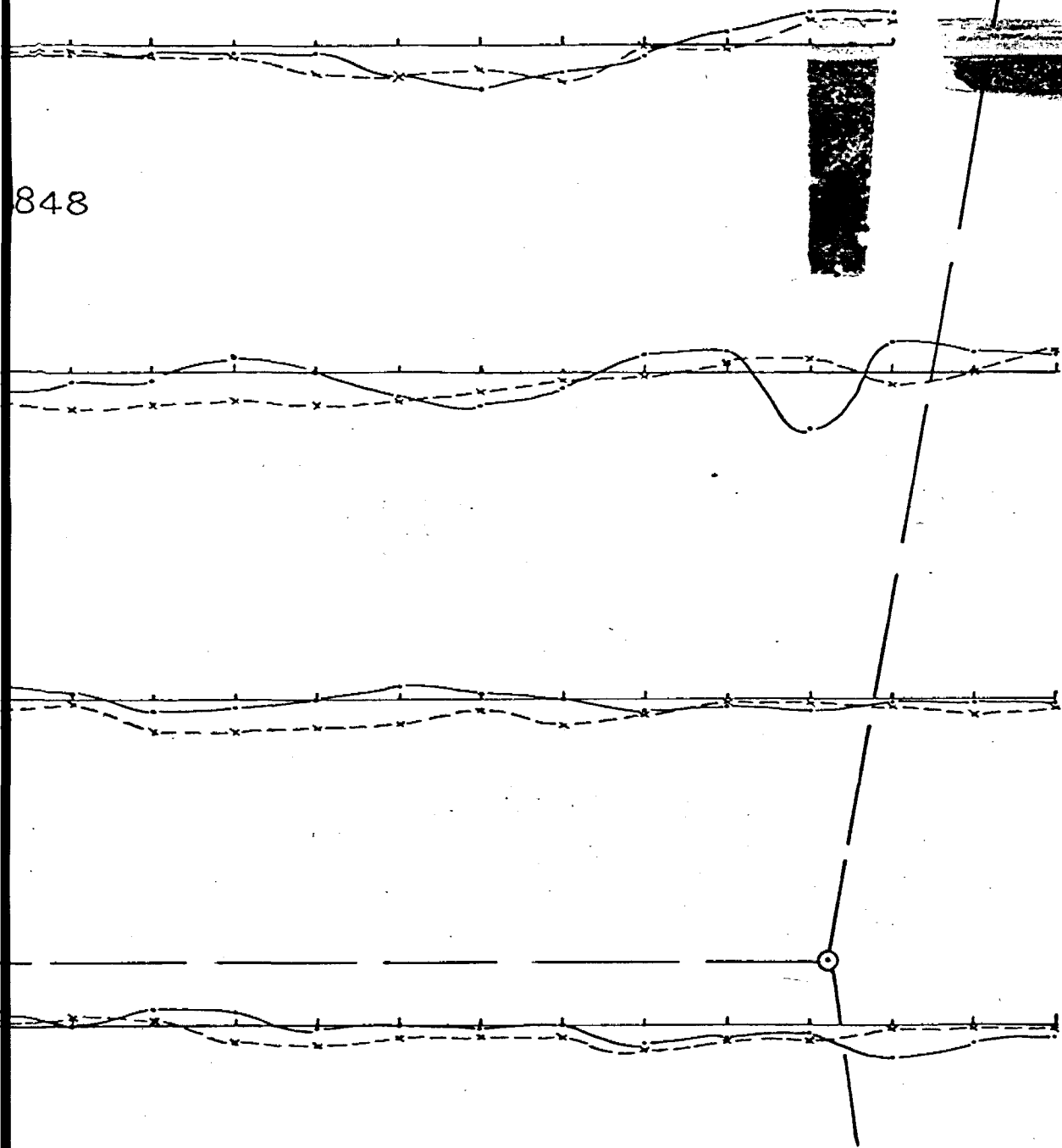
L-10+00-S

L-14+00-S

TB 113849



848



849



4+00-E

6+00-E

8+00-E

10+00-E

12+00-E

14+00-E

16+00-E

18+00-E

20+00-E

22+00-E

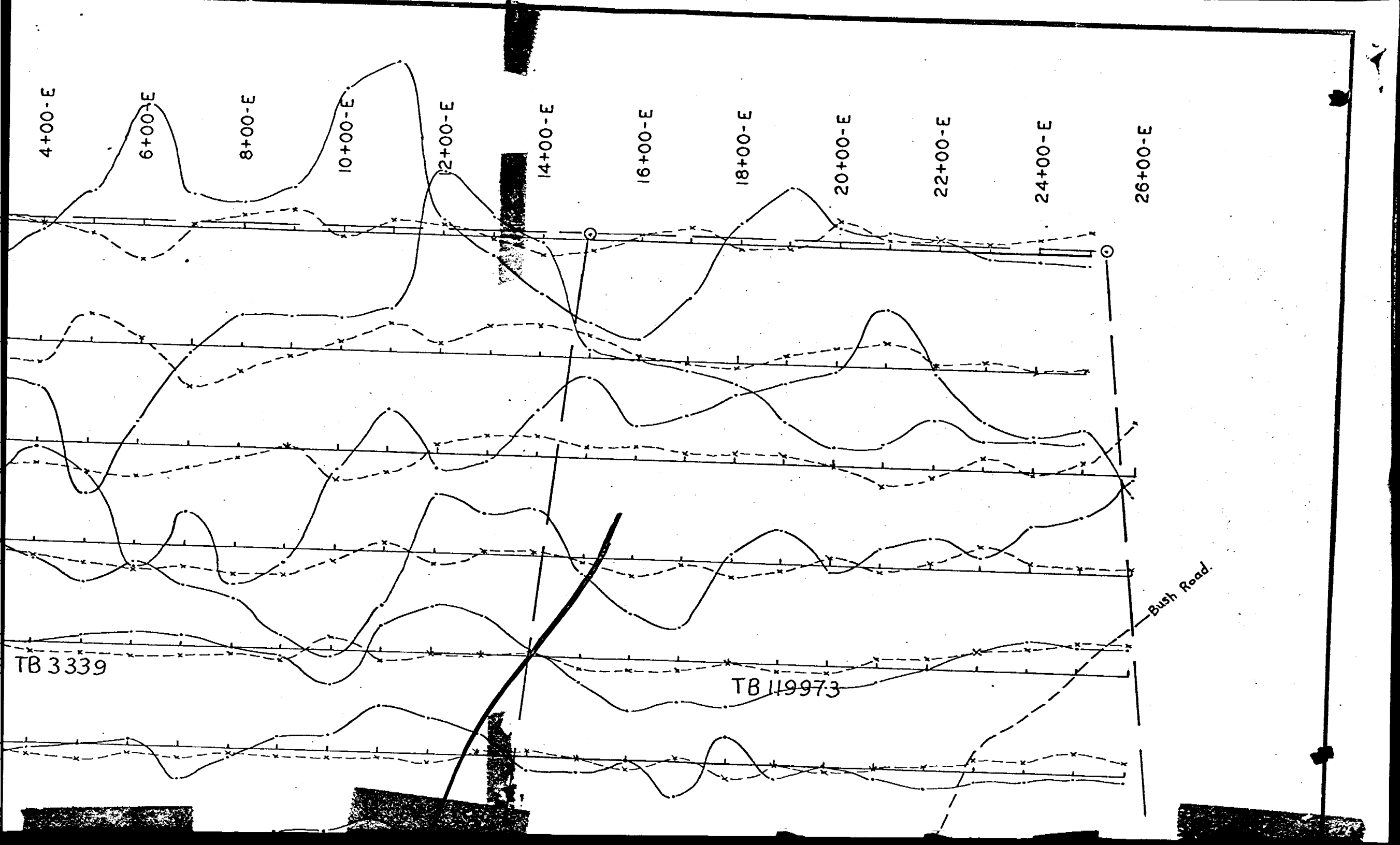
24+00-E

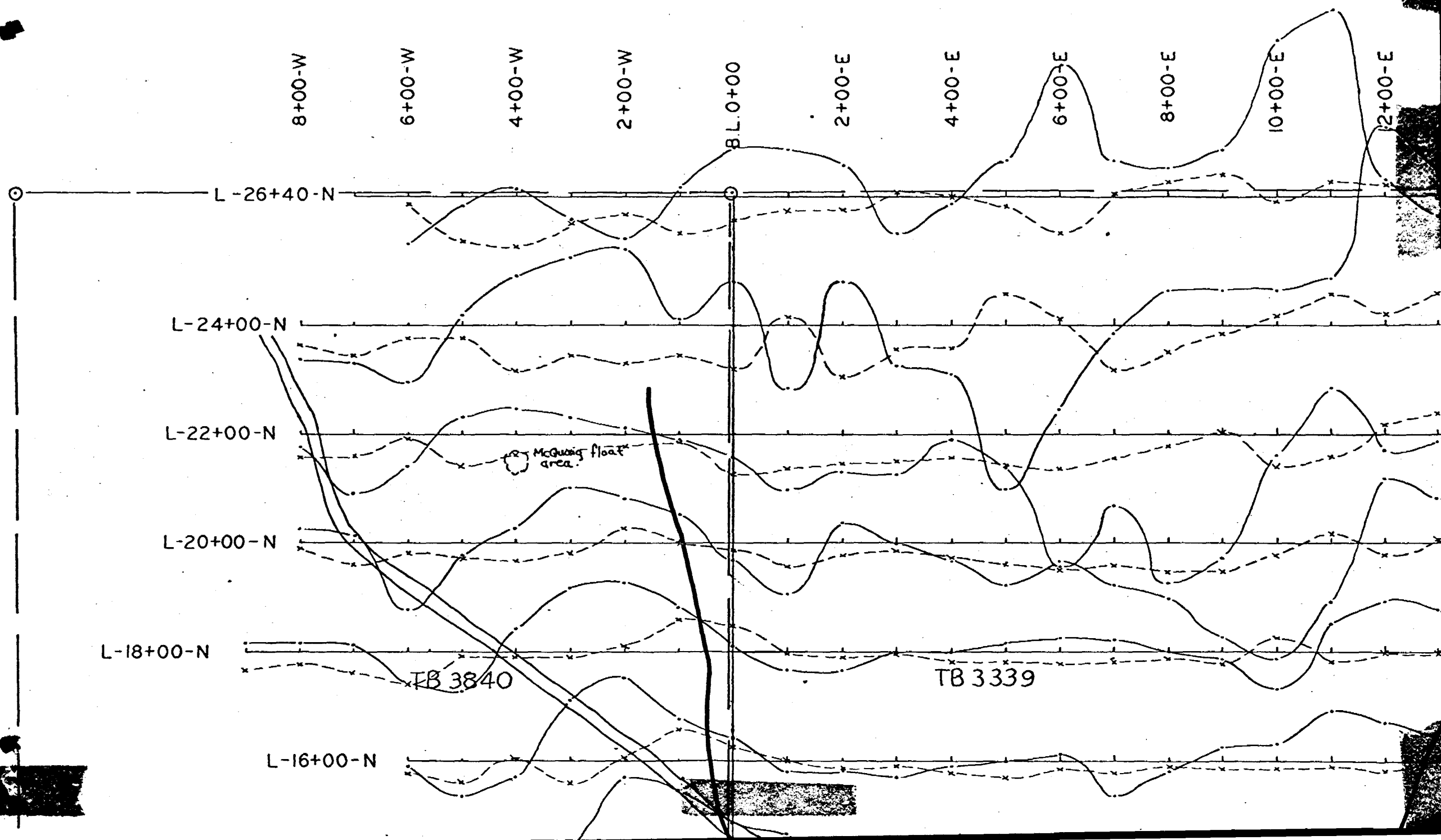
26+00-E

TB 3339

TB 119973

Bush Road.

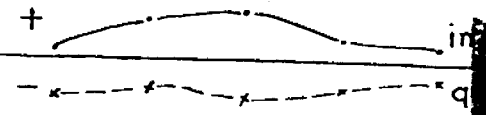
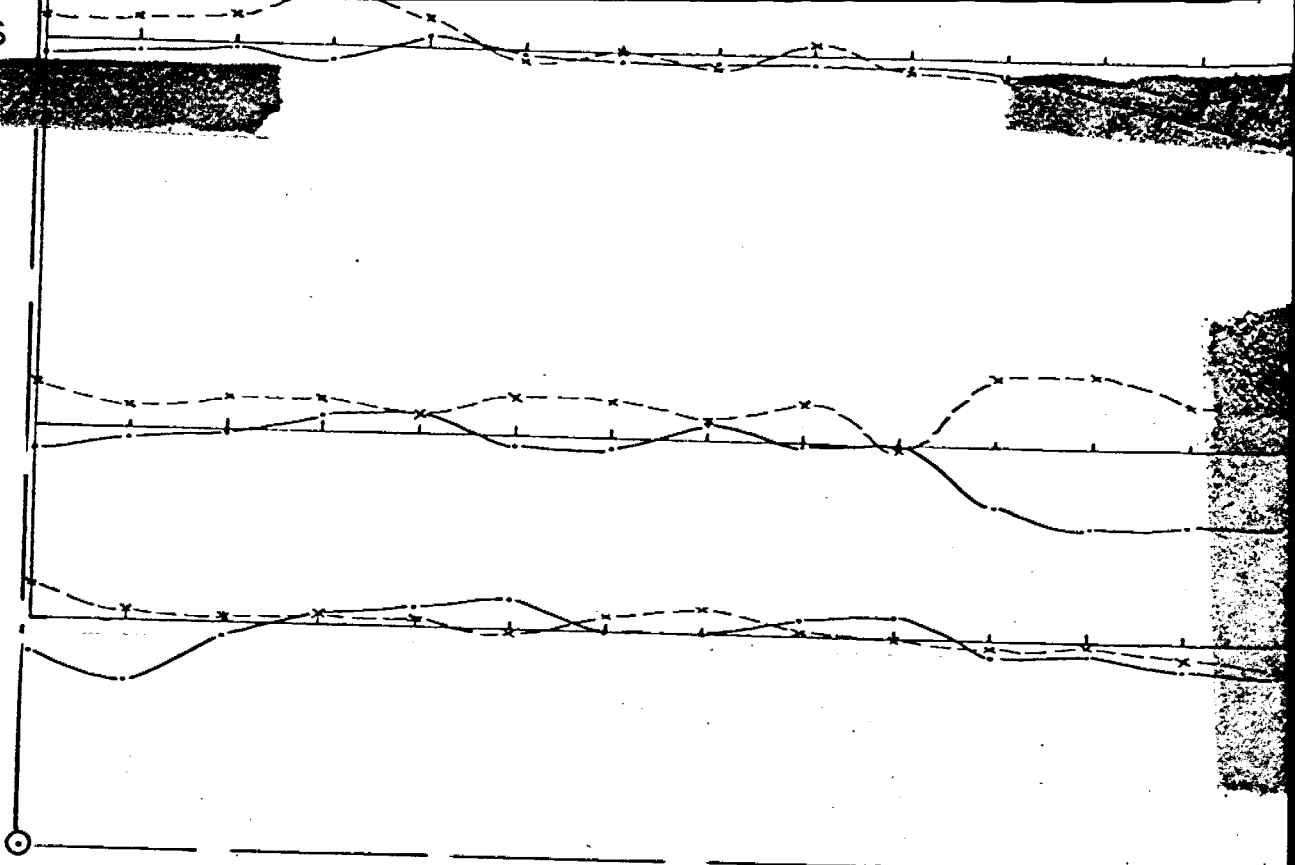




L-18+00-S

L-22+00-S

L-24+00-S



E.M.

Charles A. ...
J.H. Faulkner

PEARSON TWP. M 1857

THE TOWNSHIP OF PARDEE

DISTRICT OF THUNDER BAY
PORT ARTHUR MINING DIVISION

SCALE: 1-INCH=40 CHAINS

LEGEND

PATENTED LAND	P
CROWN LAND SALE	C.S.
LEASES	L
LOCATED LAND	Loc.
LICENSE OF OCCUPATION	L.O.
MINING RIGHTS ONLY	M.R.O.
SURFACE RIGHTS ONLY	S.R.O.
ROADS	—
IMPROVED ROADS	—
KING'S HIGHWAYS	—
RAILWAYS	—
POWER LINES	—
MARSH OR MUSKEG	—
MINES	X
CANCELLED	C

NOTES

400' reserve around all lakes and rivers to Dept. of Lands and Forests.

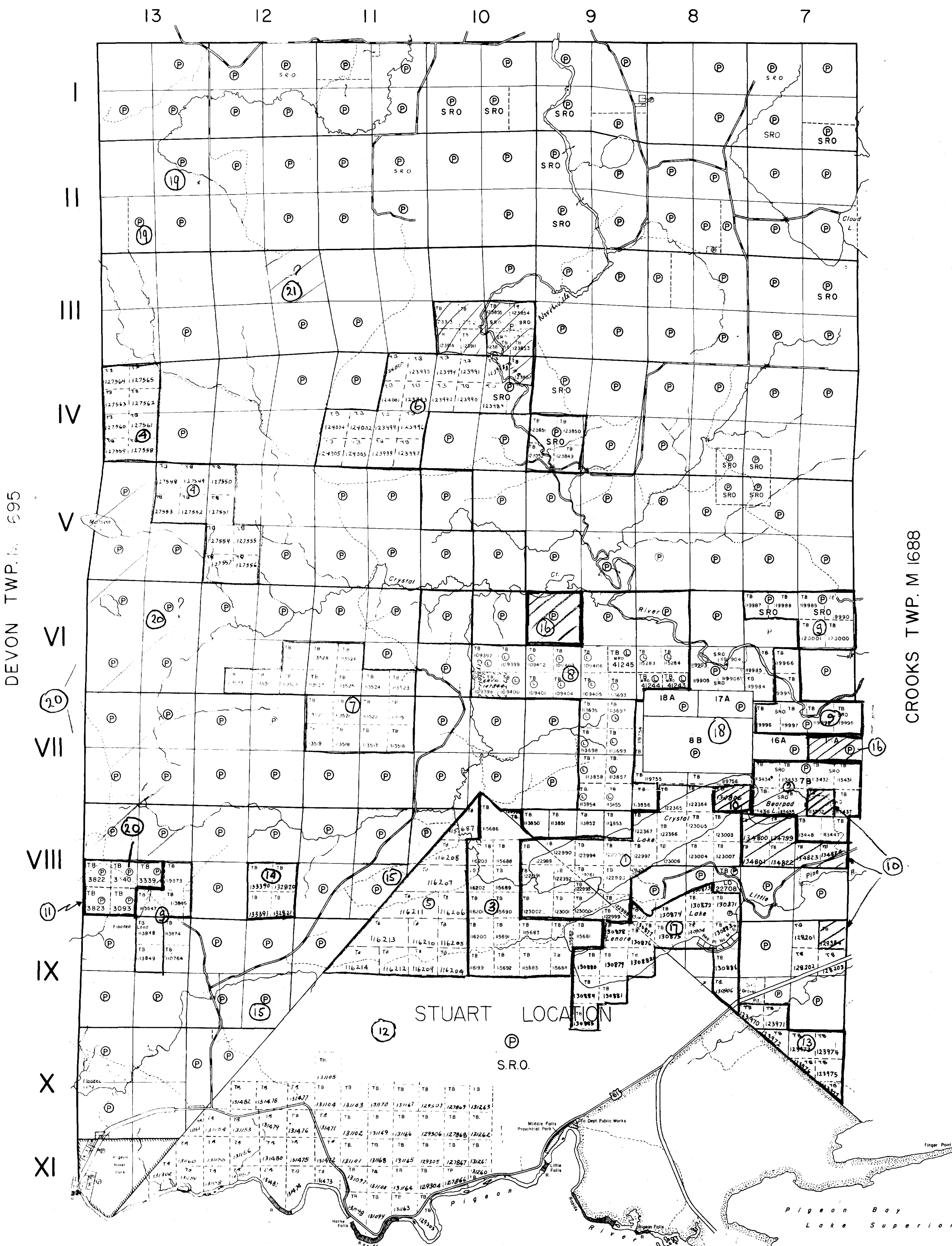
Area shown thus withdrawn from staking pursuant to the provisions of sec 34(d) of the Mining Act RSO 1960, Chapter 241

- ① Anacanda Am. Brass Ltd (N.L. opt.)
- ② Bahleida A.
- ③ Borden Mining Corp. Ltd
- ④ Brettow Mines Ltd
- ⑤ Christopher I. C. (Fed. Res. opt. Lake Sup.)
- ⑥ Copperville Mining Corp. Ltd
- ⑦ Grasset Lake Mines Ltd
- ⑧ Great Lakes Nickel Corp. Ltd.
- ⑨ Hanna Gold Mines
- ⑩ Huski M.
- ⑪ Mc Craig E.
- ⑫ Noranda Mines [1967]
- ⑬ Norpoint Expl. Ltd.
- ⑭ Northolt Mining Corp. Ltd
- ⑮ Pine River Mines [1966] (option)
- ⑯ Romex Mines and Exploration Ltd
- ⑰ Strange H. P
- ⑱ Thunder Bay Nickel Mining Ltd
- ⑲ Wuorjawi A.
- ⑳ Ylatalo N.
- ㉑ X (Occurrence C.III, R. 12, NE 1/4)

ONT. DEPT. OF MINES
MINING LANDS BR.
THIS MAP FOR CHECKING
PURPOSES ONLY - MUST
NOT BE SOLD.

DATE OF ISSUE
FEB 8 1968
ONTARIO DEPT. OF MINES

PLAN NO.- M-1856
DEPARTMENT OF MINES
— ONTARIO —



STATE OF MINNESOTA
U.S.A.

Reduce 4:1



