



52A04SW0125 10 PARDEE

010

Diamond Drilling

Township of PARDEE

Report NO: 10

Work performed by: MATTAWIN GOLD MINES LIMITED

Claim NO	Hole NO	Footage	Date	Note
TB.44655	1	619'	Aug/54	
	4	824'	Sept/54	
	5	338'	Oct/54	
	6	384'	Oct/54	
TB.44656	2	404'	Aug/54	
TB.44652	3	902'	Sept/54	

Notes:

MATTAWIN. C. M. LTD		PARDEE - TWP	
4 T. B. 44656 D.D. HOLE #2 3	4 T. B. NO. 1 44655 D.D. HOLE #4 3	4 T. B. 44652 D.D. HOLE #3 3	4 T. B. 44657 3
4 T. B. 44654 3	4 T. B. 44653 3	4 T. B. 44659 3	4 T. B. 44661 3

These are the original drill Logs as were given to Mattawin  
Gold Mines Limited by Barker-Daidowich, 1954 optionors,  
no maps. *J. J. Burdick*

HOLE #1      LOCATION: East side of Hill, near top of talus slope  
DEPTH: 619 feet      DATE: Aug. 6 - 26, 1954  
DIP: 30°, S20° W      PROPERTY: Option in Pardee  
Township, Thunder Bay  
LOGGED BY: H. G. Pullan, Prospector

FOOTAGE	DESCRIPTION
0-29	Overburden
29-619	Shales and other sedimentary rocks. Not sampled.
619	End of hole.

4-11-166

HOLE # 2

LOCATION: Flat country below  
hill, and to West.

DEPTH: 404 feet

DATE: Aug. 30 - Sept. 5, 1954

DIRECTION: S. 10°E

PROPERTY: Option in Pardee Township

DIP: 65°

LOGGED BY: H. G. Pullan

FOOTAGE

DESCRIPTION

0-165

Overburden

165-404

Shales and other sedimentary rocks.

Not sampled.

404

End of hole.

HOLE # 3

LOCATION: Hill top

DEPTH: 902 feet

DATE: Sept. 7 - 24, 1954

DIP: 60°

PROPERTY: Option in Pardee Township

DIRECTION: N. 5° E

LOGGED BY:: H. G. Pullan

FOOTAGE

DESCRIPTION

0-22	Overburden
22-707	Gabbro-medium grained
707-719	Gabbro- coarse grained, with disseminated magnetite.
719-888	Gabbro- coarse grained, with disseminated magnetite and scattered sulfide blebs of chalcopyrite, and pyrrhotite with pentlandite.
800-888	Better sulfides than previously.
888-902	Gabbro - fine grained with some sulfide spots.
902	End of hole due to mechanical difficulties.

SAMPLES

<u>Footage</u>	<u>Sample Number</u>	<u>% Cu</u>	<u>% Ni</u>	<u>Sample # 16</u>
719-730	1	0.29	0.24	0.005 oz. Au ton
730-740	2	0.09	0.01	0.12 oz. Ag ton
740-750	3	0.06	0.02	0.018 oz. Pt ton
750-760	4	0.11	0.04	0.074 oz. Pd ton
760-770	5	0.09	0.01	
770-780	6	0.20	0.09	
780-790	7	0.10	0.08	
790-800	8	0.17	0.04	
800-810	9	0.32	0.10	
810-820	10	0.36	0.14	
820-830	11	0.38	0.10	
830-840	12	0.50	0.18	
840-850	13	0.57	0.24	
850-860	14	0.12	0.01	
860-870	15	0.60	0.24	
870-875	16	0.89	0.41	
875-885	17	0.72	0.14	
885-900	18	0.31	0.10	
719' - 900'	181.0'	0.310% cu		0.119% Ni
830- 885'	55.0'	0.537% cu		0.184% Ni
860 - 885	25.0'	0.706% cu		0.234% Ni

HOLE # 4

LOCATION: Hill top

DEPTH: 824 feet

DATE: Sept. 25 - 30, 1954

DIP: 45°

PROPERTY: Option in Pardee Township

DIRECTION: N.20°E

LOGGED BY: H. G. Pullan

FOOTAGE

DESCRIPTION

0 - 760

Gabbro - medium grained with fine disseminated magnetite.

760-824

Gabbro - coarse grained with fine disseminated magnetite locally spots of sulfides - chalcopyrite, and pyrrhotite with pentlandite.

760-773

few narrow bands of abundant magnetite grains.

824

End of hole.

SAMPLES

<u>Footage</u>	<u>Sample No.</u>	<u>% Cu</u>	<u>% Ni</u>
760-770	41	0.29	0.14
770-775	42	0.11	0.04
775-785	43	0.11	0.01
785-795	44	0.12	0.08
795-805	45	0.12	0.08
805-815	46	0.10	0.01
815-825	47	0.11	0.02
760-825	65	0.138	0.054

HOLE # 5

LOCATION: Hill top

DEPTH: 338 Feet

DATE: Oct. 5 - 7, 1954

DIP: 45°

PROPERTY: Option in Pardee Township

DIRECTION: N.20° E

LOGGED BY: H. G. Pullan

FOOTAGE

DESCRIPTION

00- 338

Gabbro - medium grained

338

End of hole due to caving ground.

HOLE # 6

LOCATION: Hill top

DEPTH: 384 feet

DATE: October 8 - 11, 1954

DIP: 45°

PROPERTY: Option in Pardee Township

DIRECTION: N. 20° E

LOGGED BY: H. G. Pullan

FOOTAGE

DESCRIPTION

0 - 384

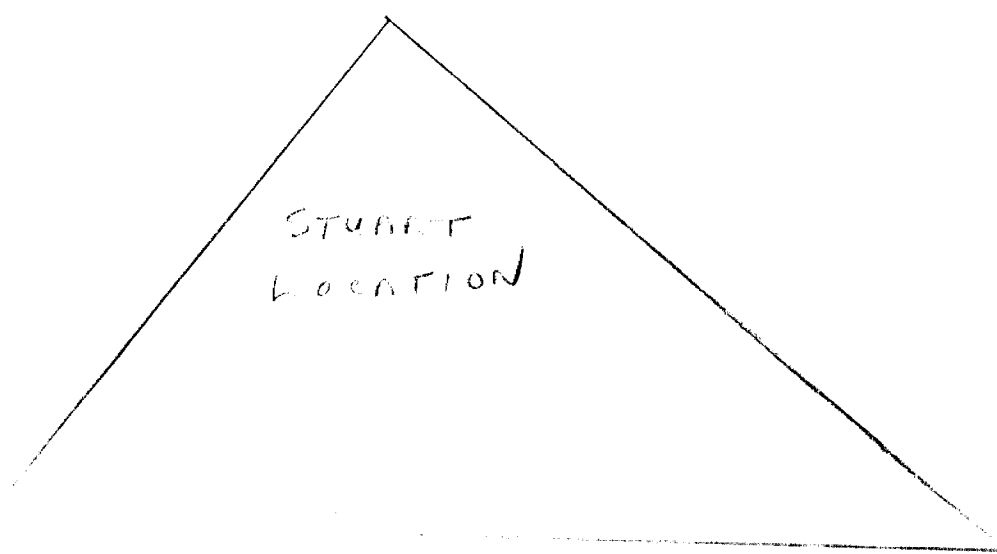
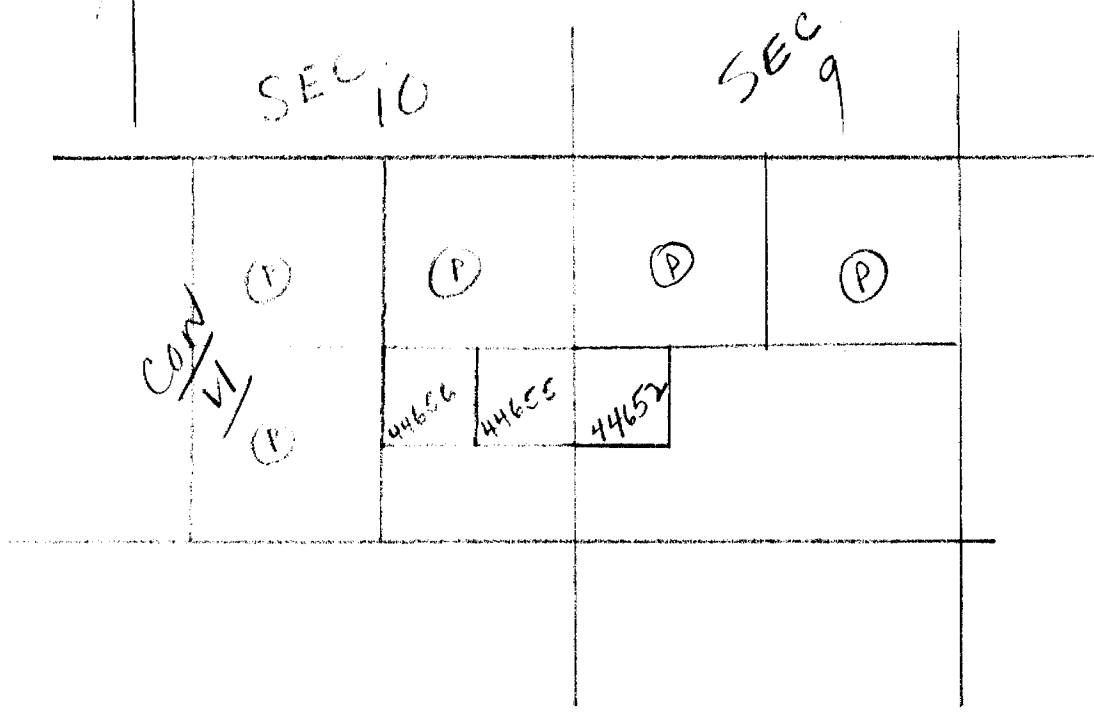
Gabbro - medium grained

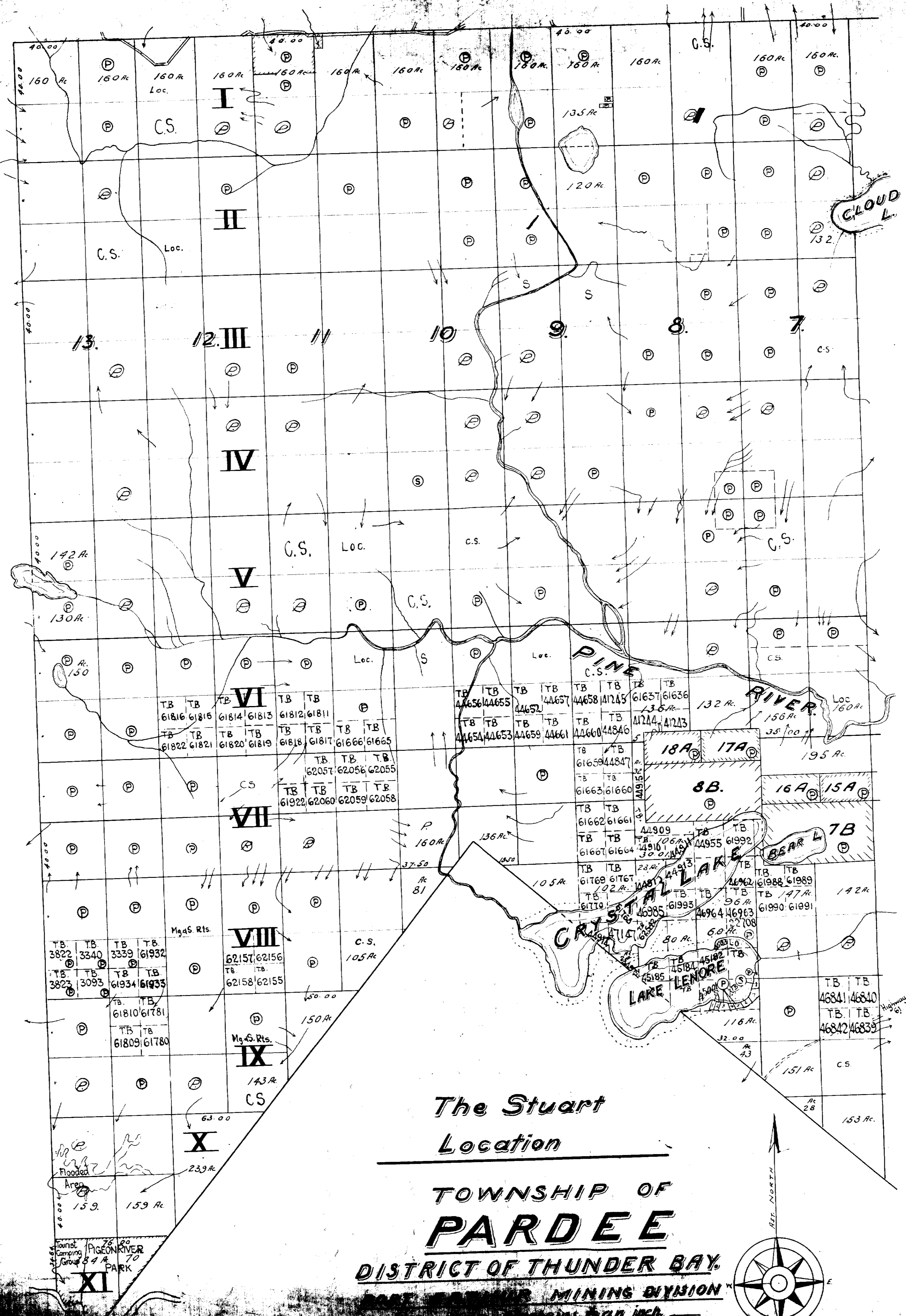
384

End of hole due to caving ground.



PAROEE TWP. M1856





**The Stuart**  
**Location**  


---

**TOWNSHIP OF**  
**PARDEE**  
**DISTRICT OF THUNDER BAY.**  
**MINING DIVISION**  
**THUNDER BAY, ONT.**

