



52A05NW0020 10 ALDINA

010

### Diamond Drilling

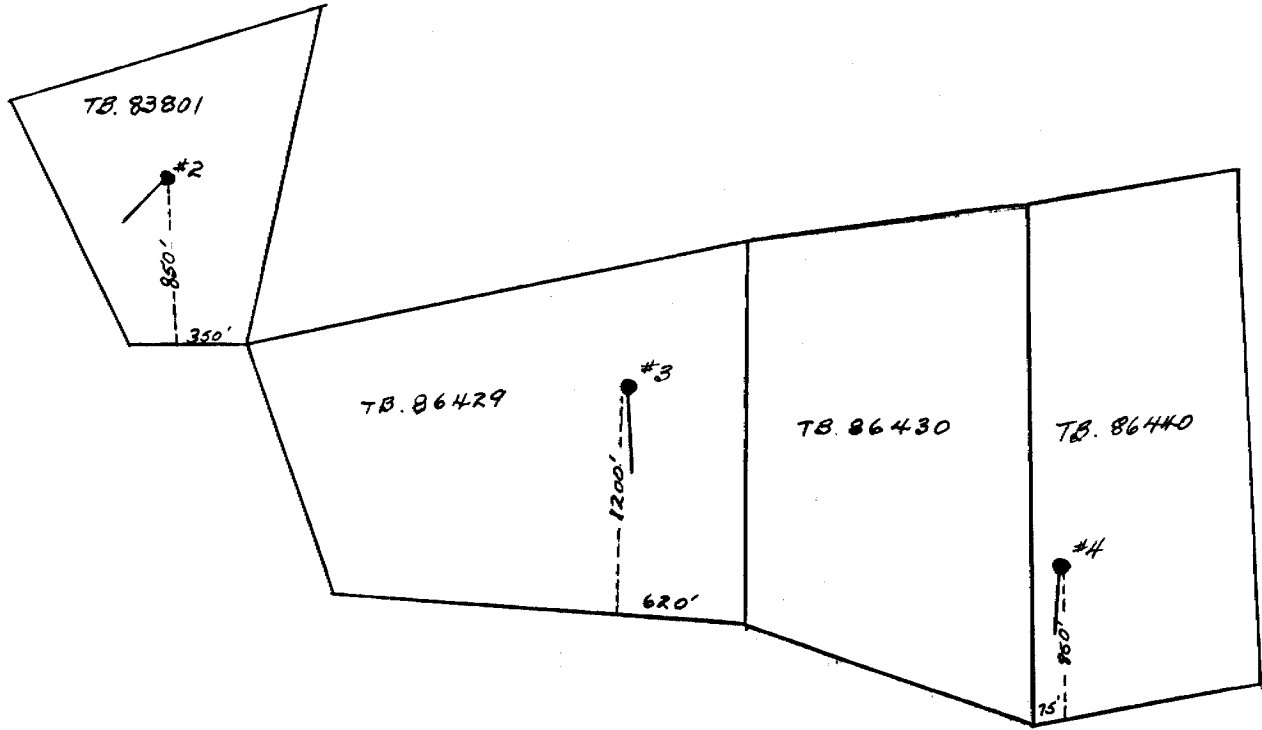
Township OF ALDINA

Report NO: 11

Work performed by: NEW FORTUNE MINES

Claim NO	Hole NO	Footage	Date	Note
TB 83801	2	380'	Oct/57	
TB 86429	3	350'	Oct/57	
TB 86440	4	301'	Oct/57	
		<u>1031</u>		

Notes:



NEW FORTUNE MINES

# DIAMOND DRILL RECORD

**PROPERTY**..... NEW FORTUNE MINES - MINOLETTI OPTION ..... **HOLE No.**..... 2  
**SHEET NUMBER**..... 7 ..... **SECTION FROM**..... **TO**..... **STARTED**..... OCTOBER 2, 1957  
**LATITUDE**..... CLAIM TB 83801 200' N.W. OF 2600 NORTH LINE 8500 E ..... **COMPLETED**..... OCTOBER 21, 1957  
**DEPARTURE**..... **BEARING**..... **ULTIMATE DEPTH**.....  
**ELEVATION**..... **DIP**..... 45 DEGREES ..... **PROPOSED DEPTH**.....

DEPTH FEET	FORMATION	SAMPLE NO.	FROM	TO	WIDTH	ASSAY VALUES		
						% IRON		
	MOSTLY NON MAGNETIC BLACK ROCK WITH MAGNETIC IRON AT 100.5 AND BETWEEN 101 AND 104'	411	100	110	10	13.30		
	ALL MAGNETIC BANDED IRON FORM.	412	90	100	10	28.70		
	NON MAGNETIC TO 112.5 REMAINDER MAGNETIC FE FORMATION SOME PYRITE	413	110	120	10	21.50		
	NON MAGNETIC MASSIVE ROCK TO 124.5 REMAINDER MAG. IRON FORM.	414	120	130	10	24.30		
	BANDED MAG. IRON FORM.	415	130	140	10			
	SCHISTED NON MAGNETIC ROCK		140	153.5				
	BANDED MAG. IRON FORMATION	416	153.5	163.5	10			
	BANDED MAG. IRON FORMATION	417	163.5	173.5	10			
	ALL MAGNETIC BANDED IRON FORM.	418	173.5	183.5	10			
	BANDED SEDIMENTARY FORM. TO 187. MASSIVE ROCK BET. 187 AND 195. REMAINDER BANDED SED.		183.5	203.5				

NORTHERN MINER FORM 505 REV./54

DRILLED BY *Canadian Logging*

SIGNED

*F. C. Tomlinson*  
F. C. TOMLINSON

*Aldena Trap*

# DIAMOND DRILL RECORD

PROPERTY NEW FORTUNE MINES - MINOLETTI OPTION HOLE No. 2  
SHEET NUMBER 6 SECTION FROM \_\_\_\_\_ TO \_\_\_\_\_ STARTED OCTOBER 2, 1957  
LATITUDE CLAIM TB 83801 200' N.W. OF 2600 NORTH LINE 8500 E DATUM \_\_\_\_\_ COMPLETED OCTOBER 21, 1957  
DEPARTURE \_\_\_\_\_ BEARING \_\_\_\_\_ ULTIMATE DEPTH \_\_\_\_\_  
ELEVATION \_\_\_\_\_ DIP 45 DEGREES PROPOSED DEPTH \_\_\_\_\_

DEPTH FEET	FORMATION	SAMPLE NO.	FROM	TO	WIDTH	ASSAY VALUES		
						% IRON		
	CASING - OVERBURDEN		0	12				
	SLIGHTLY BANDED SED. ROCK		12	20				
	BANDED MAGNETIC IRON FORM.	404	20	30	10	25.60		
	BANDED MAGNETIC IRON FORM. SOME ROCK INCLUDED	405	30	40	10	25.80		
	BANDED MAGNETIC IRON FORM. NON MAGNETIC ROCK FROM 45.4 TO 47.5	406	40	50	10	20.60		
	BANDED MAGNETIC IRON FORM. EXCEPT FOR 1.5' NON MAGNETIC SCHIST WITH CALCITE 153.5 - 155'	407	50	60	10	26.10		
	B. MAG. IRON FORMATION. MOSTLY NON MAG. BET. 62' & 63' & 66.5 & 70'	408	60	70	10	21.40		
	MAGNETIC BANDED IRON FORM. EXCEPT BETWEEN 74' AND 75' ALSO 78 - 79'	409	70	80	10	22.30		
	NON MAGNETIC 80' - 82' REMAINDER MAGNETIC IRON FORM.	410	80	90	10	23.00		

NORTHERN MINER FORM 805 REV./54

DRILLED BY *Carrollan Longyear*

SIGNED

*F. C. Tomlinson*  
F. C. TOMLINSON

# DIAMOND DRILL RECORD

**PROPERTY** ..... NEW FORTUNE MINES - MINOLETTI OPTION ..... **HOLE No.** ..... 2  
**SHEET NUMBER** ..... 8 ..... **SECTION FROM** ..... **TO** ..... **STARTED** ..... OCTOBER 2, 1957  
**LATITUDE** ..... CLAIM TB 83801 200' N.W. OF 2600 NORTH LINE 8500 E ..... **DATUM** ..... **COMPLETED** ..... OCTOBER 21, 1957  
**DEPARTURE** ..... **BEARING** ..... **ULTIMATE DEPTH** .....  
**ELEVATION** ..... **DIP** ..... 45 DEGREES ..... **PROPOSED DEPTH** .....

DEPTH FEET	FORMATION	SAMPLE NO.	FROM	TO	WIDTH	ASSAY VALUES		
						% IRON		
	BANDED MAGNETIC IRON FORM.	419	203.5	209	5.5			
	BANDED NON MAGNETIC		209	215				
	MASSIVE ROCK TUFF (?)		215	220				
	BANDED NON MAGNETIC EXCEPT BET. 225.5 AND 227		220	230				
	MASSIVE ROCK TUFF (?)		230	246				
	MAGNETIC BANDED IRON FORM	420	246	249	3.0			
	COARSE BASIC TUFF TO 252.5 REMAINDER BANDED NOT MAGNETIC		249	254.5				
	BANDED MAG. IRON 0.7' NON MAGNETIC ROCK INCLUDED	421	254.5	262	7.5			
	NON MAG. SED. SCHIST		262	275				
	BANDED MAGNETIC IRON FORM.	422	275	287	12			
	NON MAG. SED. SCHIST		287	292				
	BANDED IRON FORM. MAGNETITE	423	292	302.5	10.5			
	BASIC SED. SCHIST OR GNEISS		302.5	309.5				

NORTHERN MINER FORM 505 REV./54

DRILLED BY *Canadian Logging*

SIGNED

*F. C. Tomlinson*  
F. C. TOMLINSON

# DIAMOND DRILL RECORD

**PROPERTY**..... NEW FORTUNE MINES - MINOLETTI OPTION **HOLE No.**..... 2  
**SHEET NUMBER**..... 9 **SECTION FROM**..... **TO**..... **STARTED**..... OCTOBER 2, 1957  
**LATITUDE**..... CLAIM TB 83801 200' N.W. OF 2600 NORTH LINE 8500 E **COMPLETED**..... OCTOBER 21, 1957  
**DEPARTURE**..... **BEARING**..... **ULTIMATE DEPTH**.....  
**ELEVATION**..... **DIP**..... 45 DEGREES **PROPOSED DEPTH**.....

DEPTH FEET	FORMATION	SAMPLE NO.	FROM	TO	WIDTH	ASSAY VALUES		
						% IRON		
	BANDED MAG. IRON FORM.	424	309.5	317	7.5			
	BANDED IRON FORMATION. VERY LITTLE MAGNETITE		317	320.5				
	DARK BASIC SED. SCHIST		320.5	334.5				
	LOW GRADE BANDED IRON FORM.	425	334.5	341	6.5			
	NON MAGNETIC ROCK SOME BANDING		341	370				
	BANDED MAG. FE. FORMATION		370	371				
	BANDED SED. FORMATION SOME MAGNETITE AT 372		371	380				
	380 BOTTOM OF HOLE							

NORTHERN MINER FORM 505 REV./54

DRILLED BY *Canadian Honeywar*

SIGNED

*F. C. Tomlinson*  
F. C. TOMLINSON

# DIAMOND DRILL RECORD

**PROPERTY**..... NEW FORTUNE MINES - MINOLETTI OPTION **HOLE No.**..... 3  
**SHEET NUMBER**..... 10 **SECTION FROM**..... **TO**..... **STARTED**..... OCTOBER 21, 1957  
**LATITUDE**..... CLAIM TB 86729 35' WEST OF STATION 1350 N. ON LINE 11000 E **COMPLETED**..... OCTOBER 27, 1957  
**DATUM**.....  
**DEPARTURE**..... **BEARING**..... SOUTH PARALLEL WITH LINE 11000 **ULTIMATE DEPTH**.....  
**ELEVATION**..... **DIP**..... 42 DEGREES **PROPOSED DEPTH**.....

DEPTH FEET	FORMATION	SAMPLE NO.	FROM	TO	WIDTH	ASSAY VALUES		
						% IRON		
	CASING - OVERBURDEN		0	18				
	MOSTLY FINE GRAINED MAGNETIC IRON A FEW CHERTY BANDS AT START AND END OF SECTION	426	18	30	12			
	BANDED SED. FORMATION, MUDSTONE SANDSTONE CHERT 2" MAG. IRON AT 33'		30	52.5				
	MOSTLY FINE GRAINED MASSIVE MAGNETITE WITH A FEW SILTICEOUS BANDS SOME PYRITE	427	52.5	56.5	4			
	BANDED SED. ROCK SOME PYRITE		56.5	61				
	MAGNETIC IRON FORMATION LOW GRADE	428	61	64	3			
	COARSE TO FINE GRAINED BANDED SED. NON MAG.		64	73.5				
	SIMILAR TO ABOVE SOME PAGNETITE IN SPOTS		73.5	76				
	NON MAG. BANDED FORM.		76	80				
	MAG. BANDED IRON FORM.		80	81				
	NON. MAG. BANDED IRON FORM.		81	83				

NORTHERN MINER FORM 505 REV. 754

DRILLED BY Canadian Geophysical

SIGNED

*F. C. Tomlinson*

F. C. TOMLINSON

# DIAMOND DRILL RECORD

**PROPERTY** ..... NEW FORTUNE MINES - MINOLETTI OPTION ..... **HOLE No.** ..... 3  
**SHEET NUMBER** ..... 11 ..... **SECTION FROM** ..... **TO** ..... **STARTED** ..... OCTOBER 21, 1957  
**LATITUDE** ..... CLAIM TB 86429 35' WEST OF STATION 1350 N. ON LINE 11000 E ..... **COMPLETED** ..... OCTOBER 27, 1957  
**DEPARTURE** ..... **BEARING** ..... SOUTH PARALLEL WITH LINE 11000 ..... **ULTIMATE DEPTH** .....  
**ELEVATION** ..... **DIP** ..... 42 DEGREES ..... **PROPOSED DEPTH** .....

DEPTH FEET	FORMATION	SAMPLE NO.	FROM	TO	WIDTH	ASSAY VALUES		
						% IRON		
	MAGNETIC BANDED IRON FORM.		83	85				
	BANDED SED. NO. MAGNETITE		85	88.5				
	BANDED MAG. IRON FORM. 50% MAGNETIC	429	88.5	95	6.5			
	NON MAGNETIC		95	96				
	MOSTLY HEAVY MAGNETITE 2' OF CHERT 99-101	430	96	102	6			
	NON MAGNETIC BASIC SCHIST OR GNEISS		102	105				
	BANDED HIGHLY MAGNETIC IRON FORM. A LITTLE SCHIST INCLUDED	431	105	117	12			
	NON MAG. CHERT AND SCHIST		117	121.5				
	BANDED MAG. IRON FORM. WIDE BANDS OF CHERT SOME MAGNETITE	432	121.5	131.5	10			
	MOSTLY NON MAGNETIC CHERT SOME MAGNETITE AT	132.5	131.5	136.5				
	FINE AND COARSE GRAINED BANDED SED. FORMATION		136.5	167				
	MAGNETIC IRON FORM. ONE 8" SEC. NON.MAG.SCHIST	433	167	180.5	13.5			

NORTHERN MINER FORM 505 REV./54

DRILLED BY *Canadian her year*

SIGNED

*F. C. Tomlinson*  
F. C. TOMLINSON



# DIAMOND DRILL RECORD

**PROPERTY** ..... NEW FORTUNE MINES ..... - ..... MINOLETTI OPTION ..... **HOLE No.** ..... 3 .....  
**SHEET NUMBER** ..... 12 ..... **SECTION FROM** ..... **TO** ..... **STARTED** ..... OCTOBER 21, 1957 .....  
**LATITUDE** ..... CLAIM TB 86129 35' WEST OF STATION 1350 N. ON LINE 11000E ..... **DATUM** ..... **COMPLETED** ..... OCTOBER 27, 1957 .....  
**DEPARTURE** ..... **BEARING** ..... SOUTH PARALLEL WITH LINE 11000 ..... **ULTIMATE DEPTH** .....  
**ELEVATION** ..... **DIP** ..... 42 DEGREES ..... **PROPOSED DEPTH** .....

DEPTH FEET	FORMATION	SAMPLE NO.	FROM	TO	WIDTH	ASSAY VALUES		
						% IRON		
	COARSE GREENISH TUFF OR SED. WITH QUARTZ STRGS. NO MAGNETITE		180.5	189				
	BANDED IRON FORMATION WIDE CHERT BANDS STRONGLY MAGNETIC IN SPOTS		189	193				
	NON MAGNETIC BANDED FORMATION		193	198				
	BANDED IRON FORMATION SOME MAGNETITE		198	200				
	BASIC VOLCANIC ROCK TO 215 SCHISTOSE FROM 215 - 224.5		200	224.5				
	MAGNETIC IRON		224.5	225				
	MOSTLY BANDED SED. ROCK SOME GREENSTONE 1" OF MAGNETITE AT 235		225	235				
	SIMILAR TO ABOVE CHERT AND SCHIST		235	253.5				
	MAGNETIC IRON FORMATION		253	254.5				
	NON MAGNETIC		254.5	255.5				

NORTHERN MINER FORM 505 REV./54

DRILLED BY *Canadian Bengear*

SIGNED

*F. C. Tomlinson*  
F. C. TOMLINSON

# DIAMOND DRILL RECORD

**PROPERTY** ..... NEW FORTUNE MINES - MINOLETTI OPTION ..... **HOLE No.** ..... 3 .....  
**SHEET NUMBER** ..... 13 ..... **SECTION FROM** ..... TO ..... **STARTED** ..... OCTOBER 21, 1957 .....  
**LATITUDE** ..... CLAIM TB 86729 35' WEST OF STATION 1350 N. ON LINE 11000 E ..... **DATUM** ..... **COMPLETED** ..... OCTOBER 27, 1957 .....  
**DEPARTURE** ..... **BEARING** ..... SOUTH PARALLEL WITH LINE 11000 ..... **ULTIMATE DEPTH** .....  
**ELEVATION** ..... **DIP** ..... **PROPOSED DEPTH** .....

DEPTH FEET	FORMATION	SAMPLE NO.	FROM	TO	WIDTH	ASSAY VALUES			
						%	IRON		
	MAGNETIC		255.5	256.5					
	PROBABLY TUFF NO MAGNETITE		256.5	260					
	MAGNETIC IRON FORMATION		260	261					
	BANDED IRON FORM. SLIGHTLY MAGNETIC IN SPOTS		261	265					
	BANDED SED. ROCK WITH MAGNETITE SULPHIDES AT 273 434		265	280	15				
	BANDED SED. ROCK WITH 3" JASPER AT 294'		280	294					
	FAIRLY MASSIVE ACID VOLCANIC ROCK RHYOLITE SLIGHTLY SCHISTED		294	336					
	BANDED IRON FORMATION SOME HIGH GRADE MAGNETITE		336	343					
	BANDED FORMATION NO MAGNETITE		343	344					
	BANDED MAGNETIC IRON FORMATION		344	346					
	BANDED FORMATION NO MAGNETITE		346	350					
	350 BOTTOM OF HOLE.								

NORTHERN MINER FORM 505 REV./54

DRILLED BY *Canadian Longyear*

SIGNED

*F. C. Tomlinson*

F. C. TOMLINSON

# DIAMOND DRILL RECORD

**PROPERTY** NEW FORTUNE MINES - MINOLETTI OPTION **HOLE No.** 4  
**SHEET NUMBER** 14 **SECTION FROM** \_\_\_\_\_ **TO** \_\_\_\_\_ **STARTED** OCTOBER 29, 1957  
CLAIM TB 86140 800' NORTH ON LINE 12500 E **COMPLETED** NOVEMBER 2, 1957  
**LATITUDE** \_\_\_\_\_ **DATUM** \_\_\_\_\_ **ULTIMATE DEPTH** \_\_\_\_\_  
**DEPARTURE** \_\_\_\_\_ **BEARING** SOUTH **PROPOSED DEPTH** \_\_\_\_\_  
**ELEVATION** \_\_\_\_\_ **DIP** 45 DEGREES

DEPTH FEET	FORMATION	SAMPLE NO.	FROM	TO	WIDTH	ASSAY VALUES		
						% IRON		
	CASING - OVERBURDEN		0	8				
	COARSE GRAINED GRANITIC INTRUSIVE ROCK WITH A FEW PINK FELDSPATHIC BANDS AT WIDELY SPACED INTERVALS. VERY LITTLE SULPHIDE MINERAL GRANDDIORITE		8	85				
	FINE GRAINED PHASE OF ABOVE WITH INCLUSIONS OF SCHIST		85	90				
	MEDIUM GRAINED SLIGHTLY SCHISTOSE VOLCANIC, PROBABLY TOFF FAIRLY MASSIVE		90	103				
	BANDED SEDIMENTARY FORMATION MAGNETIC IN SPOTS. IRON FORMATION.	435	103	110	7	12.92% FE		
	BANDED MAGNETIC IRON FORMATION	436	110	120	10	27.09 FE		
	" " " "	437	120	130	10	21.40% FE		
	" " " "	438	130	140	10	26.83% FE		
	" " " "	439	140	150	10	25.70% FE		

NORTHERN MINER FORM 505 REV./54

DRILLED BY \_\_\_\_\_

SIGNED \_\_\_\_\_

*F. C. Tomlinson*  
F. C. TOMLINSON

# DIAMOND DRILL RECORD

**PROPERTY** ..... NEW FORTUNE MINES ..... **HOLE No.** ..... 4 .....  
**SHEET NUMBER** ..... 15 ..... **SECTION FROM** ..... TO ..... **STARTED** ..... OCTOBER 29, 1957 .....  
 CLAIM TB 86440 800' NORTH ON LINE 12500 E  
**LATITUDE** ..... **DATUM** ..... **COMPLETED** ..... NOVEMBER 2, 1957 .....  
**DEPARTURE** ..... **BEARING** ..... SOUTH ..... **ULTIMATE DEPTH** .....  
**ELEVATION** ..... **DIP** ..... 45 DEGREES ..... **PROPOSED DEPTH** .....

DEPTH FEET	FORMATION	SAMPLE NO.	FROM	TO	WIDTH	ASSAY VALUES		
						% I RON		
	BANDED MAGNETIC IRON FORMATION	440	150	157.5	7.5	24.94% FE		
	BLACK SLIGHTLY SCHISTOSE SEDIMENTARY ROCK (MUDSTONE) FAINT BANDING IN SPOTS NON-MAGNETIC.		157.5	181				
	COARSE TO FINE GRAINED BASIC VOLCANIC ROCK WITH FELDSPATHIC STREAKS AT ALL ANGLES TO AXIS OF THE CORE. PORPHYRITIC IN SPOTS, PROBABLY ANDESITE FLOW ROCK. VERY LITTLE SULPHIDE MINERAL.		181	297				
	BANDED IRON FORMATION WITH 5" OF PINK JASPER		297	301				
	BETWEEN 100 AND 100.5							
			301	BOTTOM OF HOLE				