

2.28537

REPORT ON
GEOLOGICAL MAPPING
BIG PEARL LAKE AMETHYST MINE,
THUNDER BAY MINING DIVISION
NTS 52 A/10

Balmertown, Ontario
September 27, 2004

Timothy J. Twomey
H.BSc. Geology



TABLE OF CONTENTS

	Page
INTRODUCTION.....	1
LOCATION AND ACCESS.....	1
PROPERTY DESCRIPTION.....	1
GENERAL GEOLOGY.....	1
GEOLOGICAL MAPPING.....	7
CONCLUSIONS AND RECOMMENDATIONS.....	8
CERTIFICATE OF QUALIFICATIONS.....	9
REFERENCES CITED.....	10

LIST OF FIGURES

1) GENERAL GEOLOGY MAP OF McTAVISH TWP.....	2
2) CLAIM MAP OF PROPERTY (1" = 1/4 mi.).....	3
3) GPS Vein MAP OF PROPERTY (1:5,000).....	4
4) GEOLOGY MAP McTAVISH TWP (1" = 1/2 mi.).....	5
5) GEOLOGY SURVEY (1:2,000).....	6

INTRODUCTION

The property contains an amethyst deposit nearby to Big Pearl Lake, south of and parallel to the Detroit-Algoma mine trend. It is within the prolific amethyst belt of the north half of McTavish Township in Northern Ontario. The deposit contains good-grade amethyst in a quartz vein up to 2 m wide (6 feet) readily amenable to mine. The author prospected the area of the Far East showing on May 15th and August 4th, 2004.

LOCATION AND ACCESS

The property is located within McTavish Township, claim map G-175, latitude 48° 40' 45", longitude 88° 40' 37". It is approximately 50 km (30 miles) east of the City of Thunder Bay, Ontario. The property is located 1 km (0.6 miles) north of Highway 11-17 via No. 5 Road North at Pearl, Ontario. Access to the property is provided by an all-weather gravel road, the Diamond Willow Mine/Blue Points Mine road, which connects five amethyst mines with Highway 11-17, for 1 km (0.6 miles). Then, one proceeds on a narrow bush road, controlled by the property for 250 m (800 feet) to the mine-site.

PROPERTY DESCRIPTION

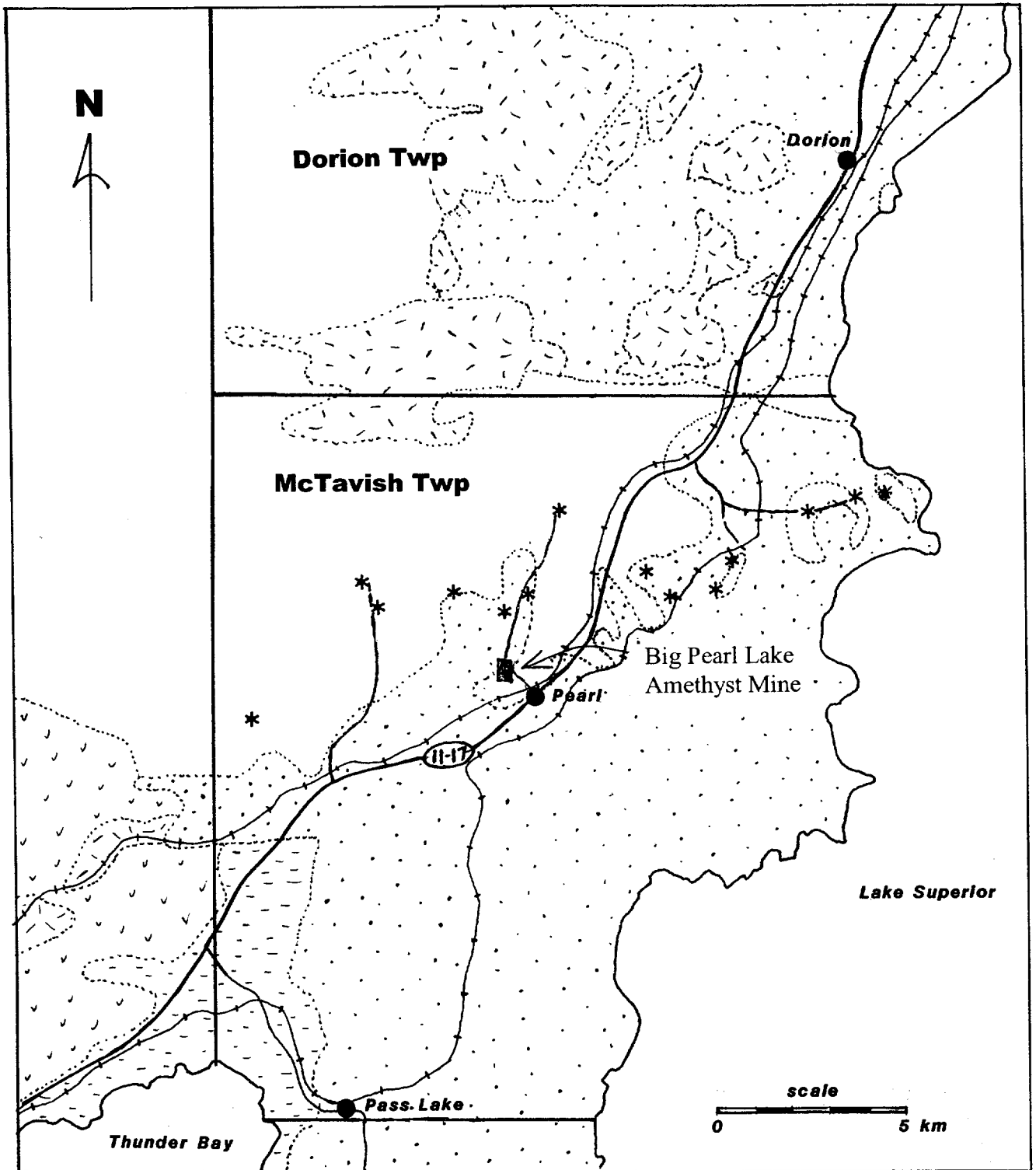
The property consists of six contiguous unpatented mining claims containing nine units within Lot 5, Concession III and IV, in McTavish Township, Thunder Bay Mining Division. It contains approximately 144 hectares (360 acres). The original amethyst occurrence was staked in 1985, and unpatented mining claims require \$400 assessment work per unit per year to remain in good standing. No other taxes are applicable. The assessment work due are listed below:

TB.830425	40 acres	1 unit	assessment \$400 due February 8, 2007
TB.1165209	40 acres	1 unit	assessment \$400 due October 15, 2006
TB.1238077	40 acres	1 unit	assessment \$400 due August 21, 2005
TB.1238078	80 acres	2 units	assessment \$800 due August 6, 2005
TB.1249528	80 acres	2 units	assessment \$800 due March 7, 2005
TB.1249532	80 acres	2 units	assessment \$800 due July 12, 2004

Over \$20,000 has been spent to date on the property since 1985.

GENERAL GEOLOGY

Tanton (1931) published Map 214A and described the veins and prospects in the area which experienced a minor exploration resurgence at that time. The township was most recently mapped by McIlwaine (1971) at a scale of 1 inch to 1/4 mile. It was released as an uncoloured preliminary map. McIlwaine mapped Archean-aged basement rocks of migmatitic metasediments and four phases of granitoids (see Figure 4). These basement rocks are unconformably overlain by Sibley Group sedimentary rocks consisting of near flat-lying



Property Location






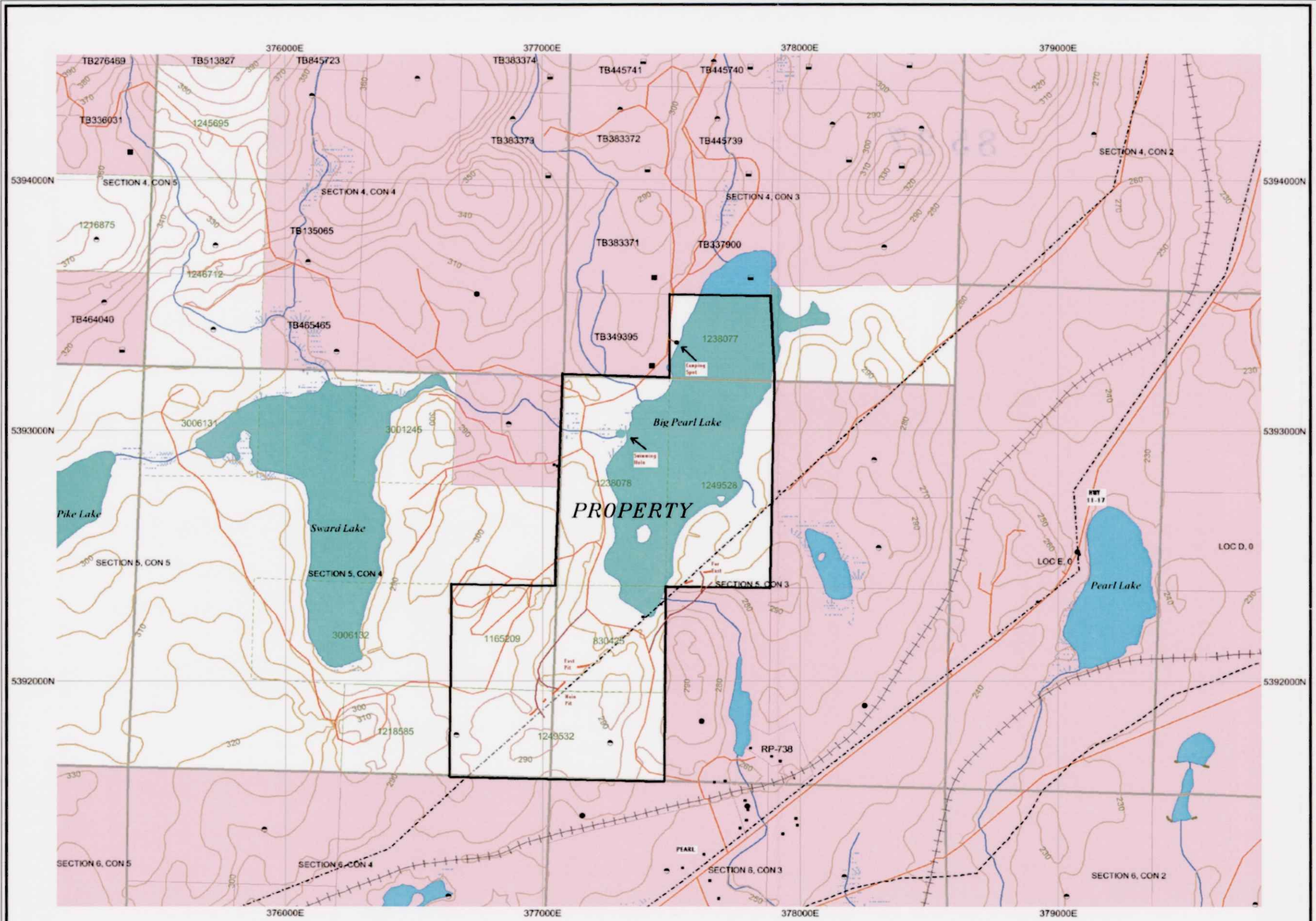
- Legend**
-  **Diabase**
 -  **Sibley Group**
 -  **Animikie Group**
 -  **Metavolcanic Rocks**
 -  **Granitic Rocks**
 - * Amethyst Occurrence**

Figure 1



LEGEND

2.2

N

2.28537

SYMBOLS

- Geological contact (observed, interpret)
- Foliation (inclined)
- Joint (inclined, vertical)
- Shear
- Z-fold with plunge
- Outcrop
- Small outcrop
- Boulder
- Amethyst
- Ledge, Cliff
- Swamp
- Drainage direction
- Lineament
- Claim post
- O/B Overburden

UTM Zone 16
1000m grid

Big Pearl Lake Amethyst Mine
McTAVISH TOWNSHIP, ONTARIO

LOCATION MAP

NTS 52 A/10

DATE: AUGUST 2004	SCALE: 1 : 20,000
DRAWN BY: TJT	

FIGURE 7

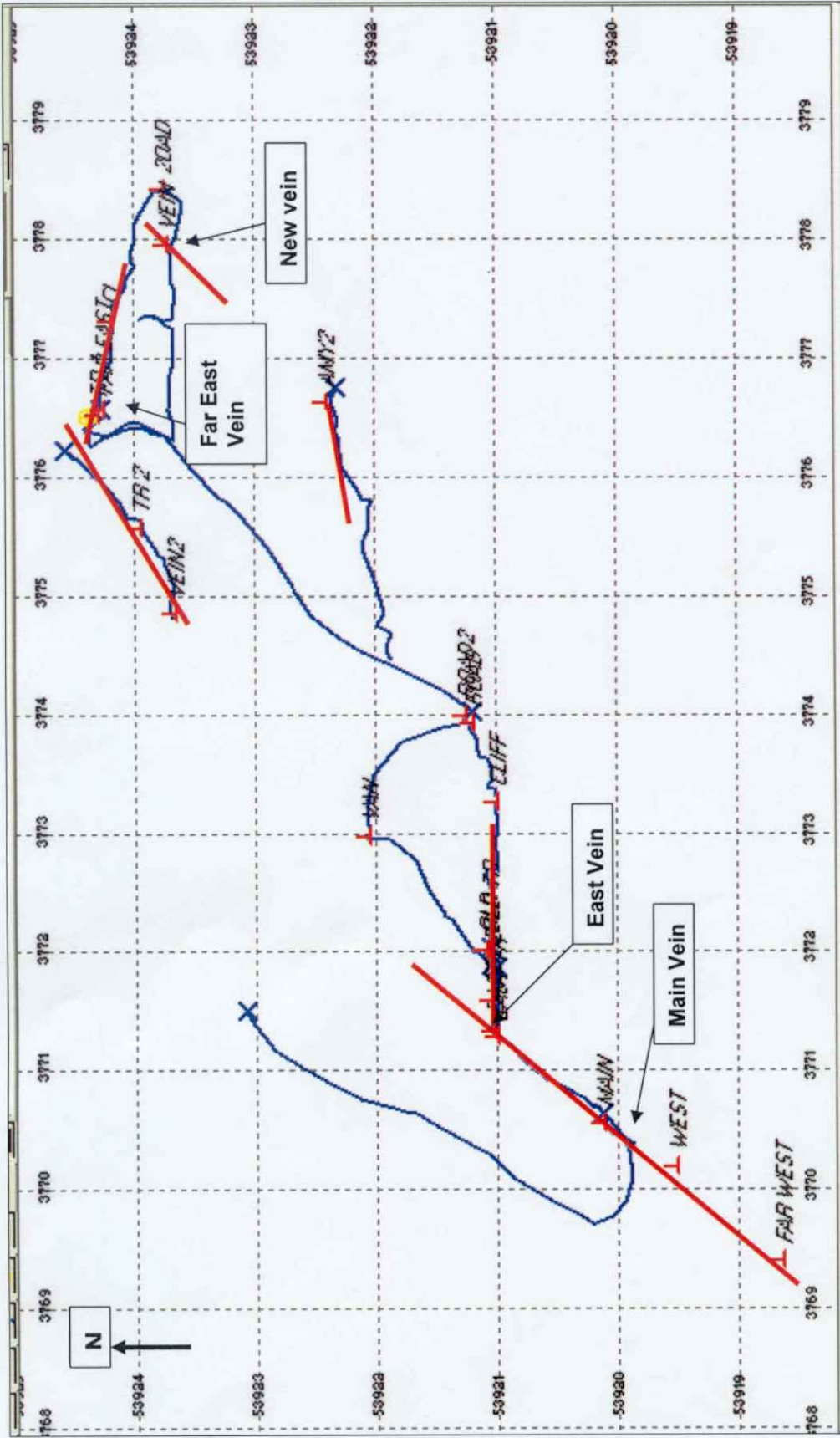
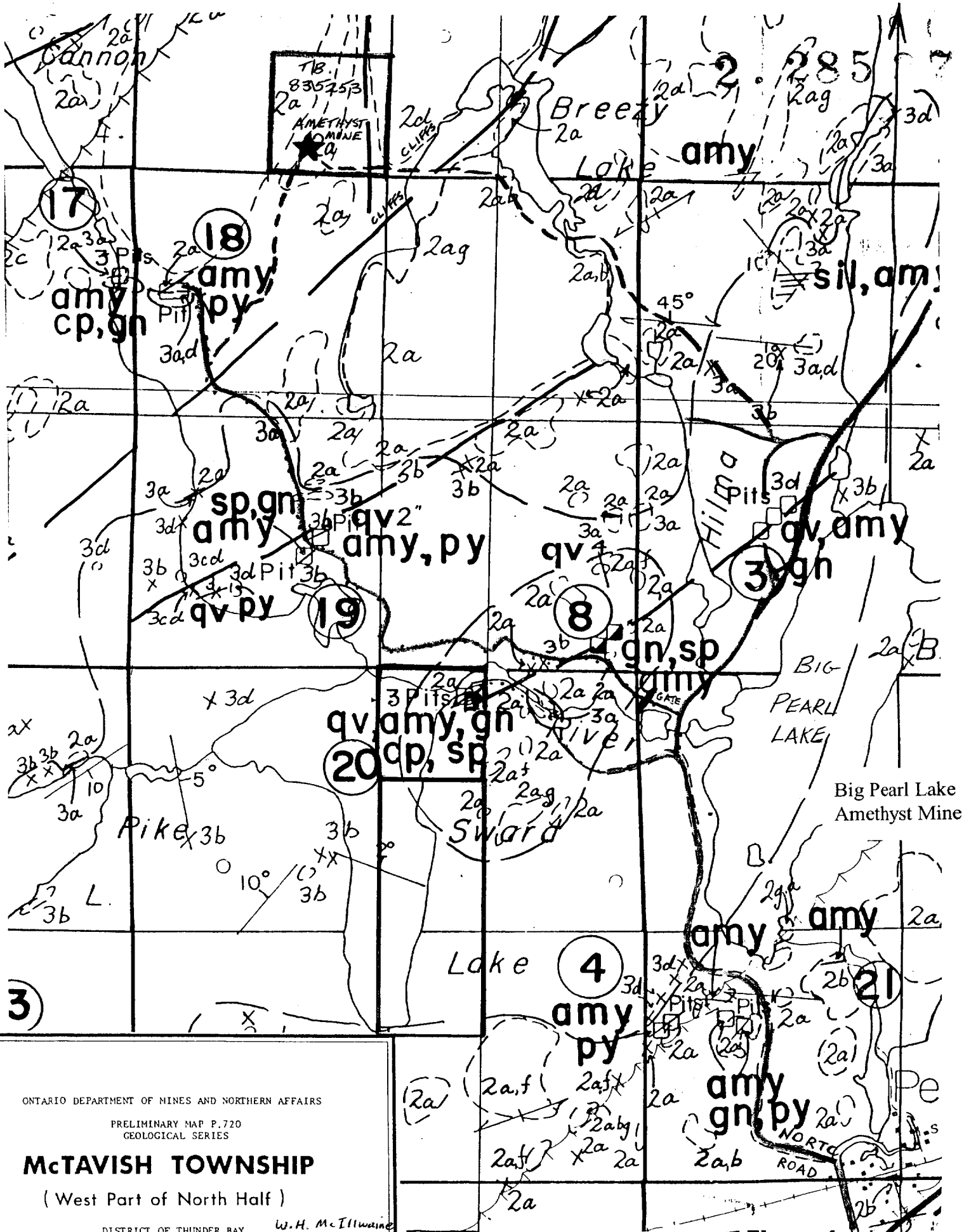


Figure 3: GPS Vein Map, of Big Pearl Lake Property. Grid is in UTM co-ordinates where each square is 200 m, scale is 1:5,000. Vein sets are in red and traverses are in blue.

2
28537



ONTARIO DEPARTMENT OF MINES AND NORTHERN AFFAIRS
 PRELIMINARY MAP P.720
 GEOLOGICAL SERIES

McTAVISH TOWNSHIP
 (West Part of North Half)

DISTRICT OF THUNDER BAY *W.H. McIllwaine*
 1971
 Scale 1 inch to 1/2 mile

Figure 4

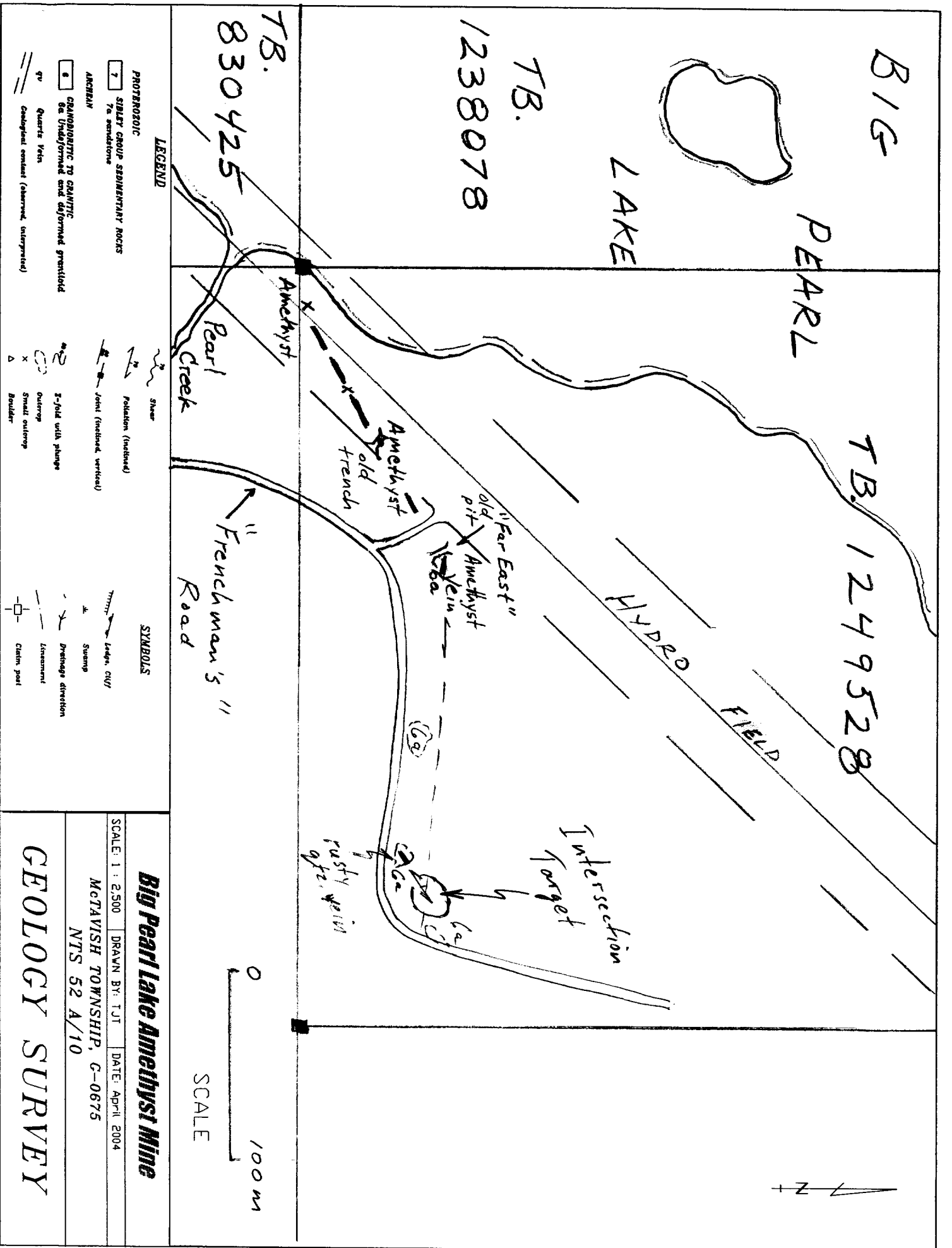


FIGURE 5

Big Pearl Lake Amethyst Mine

SCALE: 1 : 2,500 DRAWN BY: TJT DATE: April 2004

MCTAVISH TOWNSHIP, C-0675

NTS 52 A/10

GEOLOGY SURVEY

conglomerates, sandstones and limestones. These were deposited in a shallow sea in Proterozoic times. All of the rocks were then intruded by dikes and sheets of diabase.

The north half of McTavish Township contains numerous normal faults derived from basinal downwarping of the Sibley sedimentary rocks. Thus, the faults often define granite/sedimentary rock contacts and strike at 060 to 090. The faults are variably occupied by amethystine quartz veins containing minor amounts of galena, sphalerite and chalcopyrite. The exposed unconformity between the granites and the Sibley sediments in this area is the reason it is an amethyst district.

GEOLOGICAL MAPPING

Mapping was conducted on TB.1249532 nearby an old trench designated the "Far East Pit". It occurs 80 m (260 ft) at azimuth 055° from an old pit in the hydro field on an amethyst vein. The trench is 1 m wide by 10 m long (3 ft by 30 ft) perpendicular to the vein strike. It is badly overgrown and exposed a quartz vein between 0.3 m to 0.5 m wide, striking at 100° and dipping vertically, containing amethyst lined vugs and galena. The galena is euhedral and coarse-grained and comprises about 1% of the vein in the trench. The amethyst is druzy and deep purple, black and white in color. There is no documentation of this old work in assessment files but the property was described in Tanton, 1931, and originates from the 1920's.

All of the veins on the property were revisited and marked by GPS. Each vein orientation was measured by compass. These are displayed in Figure 3 which shows two vein patterns. This pattern was recognized in the Far east area as well. The vein east of the Far East pit is exposed for 15 m where it enters thin cover of overburden. It strikes at an azimuth of 100°. The area around this showing was mapped for a radius of 200 m. The geological mapping of the outcrops were plotted by GPS and drafted into a local grid parallel to the south claim line cut in 2002 (see Figure 4). Locations by UTM co-ordinates 16U (NAD 27 Canada) are as follows:

"Far East Pit" old pit, quartz vein azimuth of 100°:	0377658m E, 5392425m N
New rusty Vein outcrop, quartz vein azimuth of 045°:	0377795m E, 5392371m N
Old trench in hydro field, quartz vein azimuth of 049°:	0377558m E, 5392394m N
Granite outcrop, barren:	0377843m E, 5392375m N

The granite that hosts the veins is similar to that throughout the property. It is coarse-grained to medium-grained granite containing 1 to 2% black biotite, 2 to 4% clear quartz phenocrysts and 94% red and white feldspars (rock code 6a in Figure 5). There is a set of relatively vertical joints at 030° and 140° respectively. The granite also contains a minor amount of migmatized biotitic metasediments and are Archean in age. The new vein found is rusty quartz about 0.3 m wide, striking at 048° and dipping vertically. It occurs in massive granite. On-strike along this vein to the northeast in about 50 m will intersect the east trend of the vein at the Far East pit.

CONCLUSIONS AND RECOMMENDATIONS

The vein system that hosts the amethyst is more complex than originally observed. Two sets of veining were mapped in both the Main Pit and East Pit area as well as the new "Far East" area. 1) Parallel to the regional trend at 045°, defining the margins of the Sibley Basin and, 2) minor set at an azimuth of 070° to 100°. This vein system is at least 1 km (0.6 miles) in strike length parallel to the regional trend. These trends continue past the mined areas and their intersections constitute excellent targets to host amethyst in more dilatant portions of the vein sets (see Figure 3). These observations agree with the regional geology map of the north half of McTavish Township, mapped by McIlwaine (1971) as seen in Figure 4.

Good quality purple amethyst is seen east of the Far East Pit extending up to the overburden. This trend leads towards a rusty quartz vein about 50 m further northeast where they would intersect (see Figure 5). Therefore, it is recommended that the area be stripped with a rubber-tired backhoe, using the "Frenchman's" road for access, in order to evaluate this new area.

CERTIFICATE OF QUALIFICATIONS

2 . 285 37

I, Timothy J. Twomey, of Box 88, Balmertown, Ontario, P0V 1C0, do hereby certify as follows concerning my Report on Prospecting, Big Pearl Lake Amethyst Mine, dated September 27, 2004:

1. I am a 1983 graduate of Lakehead University, Thunder Bay, Ontario, holding a Bachelor of Science (Honours) degree in Geology.
2. Breezy Mountain Amethyst Mines Ltd., of which I am sole owner, has a 100% interest in the Big Pearl Lake Amethyst Mine.
3. This report is based on my own work on the property as well as literature review of Assessment Files, Resident Geologists Office, Ministry of Northern Development and Mines, Thunder Bay, Ontario.

September 27, 2004
Balmertown, Ontario



Timothy J. Twomey
B.Sc (Hons) Geology

REFERENCES

Assessment Files, Resident Geologists Office, MNDM, Thunder Bay, Ontario.

McIlwaine, W.H.

1971: McTavish Township (North Half), District of Thunder Bay; Ontario Dept. of Mines and Northern Affairs, Prelim. Geol. Ser. Map P.720, scale 1 inch to 1/4 mile.

Tanton, T.L.

1931: Fort William and Port Arthur, and Thunder Cape Map Areas, Thunder Bay District, Ontario; Canada Department of Mines, Memoir 167.

Date: 2004-OCT-07

GEOSCIENCE ASSESSMENT OFFICE
933 RAMSEY LAKE ROAD, 6th FLOOR
SUDBURY, ONTARIO
P3E 6B5

TIMOTHY J TWOMEY
BREEZY MOUNTAIN AMETHYST MINES LTD.
BOX 88
BALMERTOWN, ONTARIO
P0V 1C0 CANADA

Tel: (888) 415-9845
Fax: (877) 670-1555

Submission Number: 2.28537
Transaction Number(s): W0440.01549

Dear Sir or Madam

Subject: Approval of Assessment Work

We have approved your Assessment Work Submission with the above noted Transaction Number(s). The attached Work Report Summary indicates the results of the approval.

At the discretion of the Ministry, the assessment work performed on the mining lands noted in this work report may be subject to inspection and/or investigation at any time.

If you have any question regarding this correspondence, please contact STEVEN BENETEAU by email at steve.beneteau@ndm.gov.on.ca or by phone at (705) 670-5855.

Yours Sincerely,



Ron C. Gashinski
Senior Manager, Mining Lands Section

Cc: Resident Geologist

Breezy Mountain Amethyst Mines Ltd.
(Claim Holder)

Assessment File Library

Breezy Mountain Amethyst Mines Ltd.
(Assessment Office)

Date / Time of Issue: Thu Oct 07 09:37:48 EDT 2004

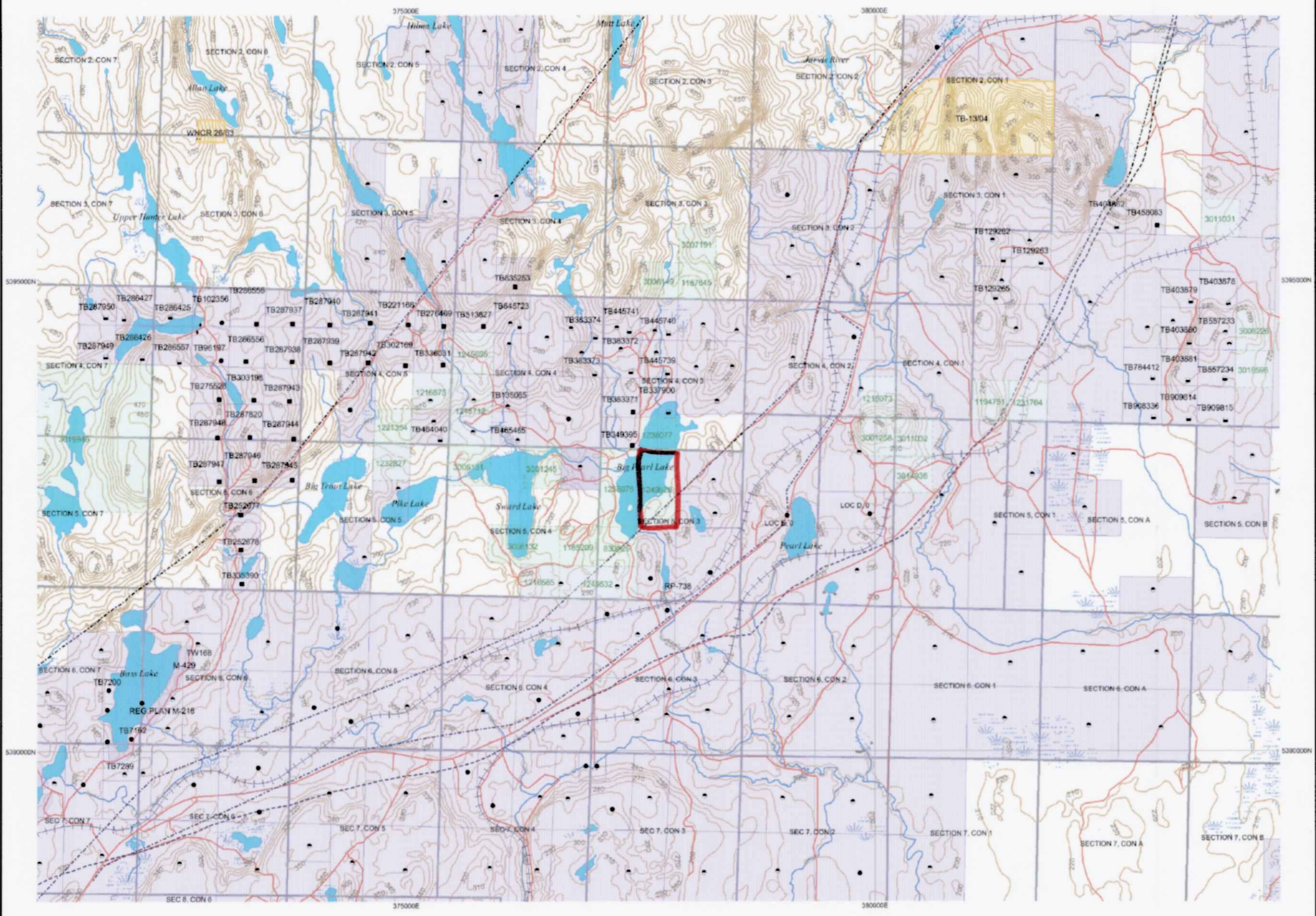
TOWNSHIP / AREA
MCTAVISH

PLAN
G-0675

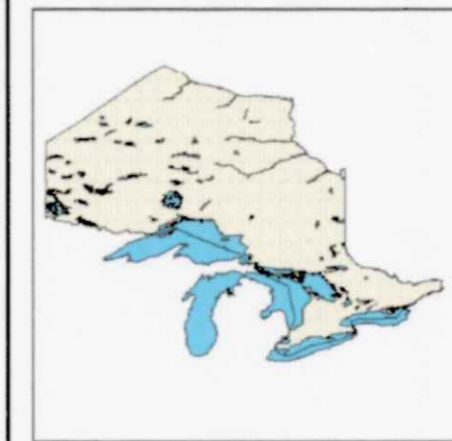
ADMINISTRATIVE DISTRICTS / DIVISIONS

Mining Division
Land Titles/Registry Division
Ministry of Natural Resources District

Thunder Bay
THUNDER BAY
THUNDER BAY



TOPOGRAPHIC		Land Tenure	
	Administrative Boundaries		Freshhold Patent
	Township		Surface And Mining Rights
	Concession Lot		Surface Rights Only
	Provincial Park		Mining Rights Only
	Indian Reserve		Leasehold Patent
	Cliff, Pit & Pile		Surface And Mining Rights
	Contour		Surface Rights Only
	Mine Shafts		Mining Rights Only
	Mine Headframe		Licence of Occupation
	Railway		Uses Not Specified
	Road		Surface And Mining Rights
	Trail		Surface Rights Only
	Natural Gas Pipeline		Mining Rights Only
	Utilities		Land Use Permit
	Tower		Order In Council (Not open for staking)
			Water Power Lease Agreement
			Mining Claim
			Flad Only Mining Claims
		LAND TENURE WITHDRAWALS	
	Mining Acts Withdrawal Types		Surface And Mining Rights Withdrawn
	Surface Rights Only Withdrawn		Mining Rights Only Withdrawn
	Order In Council Withdrawal Types		Surface And Mining Rights Withdrawn
	Surface Rights Only Withdrawn		Mining Rights Only Withdrawn
	Mining Rights Only Withdrawn		
		IMPORTANT NOTICES	
	No		



2.28537
GEOL



For more information, contact the Ministry of Northern Development and Mines for additional title determination purposes as the information on this map may also be obtained through the following website: www.mndm.gov.on.ca/MNDM/MINES/LANDS/mimnmpge.htm

General Information and Limitations
 Contact Information:
 Provincial Mining Recorders' Office
 Willet Green Miller Centre 933 Ramsey Lake Road
 Sudbury ON P3E 6B5
 Home Page: www.mndm.gov.on.ca/MNDM/MINES/LANDS/mimnmpge.htm

Toll Free
 Tel: 1 (855) 415-9845 ext 5777
 Fax: 1 (877) 670-1444
 Map Datum: NAD 83
 Projection: UTM (5 degree)
 Topographic Data Source: Land Information Ontario
 Mining Land Tenure Source: Provincial Mining Recorders' Office

This map may not show unregistered land tenure and interests in land including certain patents, leases, easements, right of ways, flooding rights, licences, or other forms of disposition of rights and interest from the Crown. Also certain land tenure and land uses that restrict or prohibit free entry to stake mining claims may not be illustrated.