

GROUP NO. 11 - FLANDERS, ONTARIO

(Mayflower Mine)

Group No. 11 consists of the following six patented claims:

F.F. 4300
F.F. 4301
F.F. 4302
F.F. 4304
F.F. 4305
F.F. 4320

Location

The property is located about $1\frac{1}{2}$ miles west of Flanders station on the Canadian National Railway in the Fort Frances Mining Division. The railway and a power line cross the property.

History

The old Mayflower Mine is reported on briefly in the Ont. Bur. of Mines 1901 report and also in the Ont. Bur. of Mines report of 1929 Part VI. Some exploratory work was done in 1928 and in the thirties. In 1945 Andowan Mines drilled two holes, additional drilling was carried out by Freeport Exploration Company in 1946 under an option when the shaft was pumped out and the old underground workings examined. No exploration of note has been carried out since that time.

General Geology

The property is underlain by Keewatin volcanics intruded by small bodies of granitic rocks (dominantly quartz porphyry).

Economic Geology

The Mayflower shaft has a depth of 100 feet and short workings have been driven at the 50 and 100 foot levels. A sketch of the old workings (as of 1928) is attached. It should be noted that the gold values reported are based on the old lower price of gold prevailing in 1928.

The quartz veins exposed at the surface vary in width from 1 to 10 feet and strike about N 85° E. The veins are in and adjacent to a body of quartz porphyry. The main mass of porphyry is west and north of the shaft. The pattern of shearing and fracturing is not clear.

Two drill holes (1945) intersected vein material of good grade. The assays obtained were:

Hole No. 1	63' to 66'	0.50 oz. Au.
	66' to 71'	0.10 oz. Au.
Hole No. 2	122'6" to 125'	0.23 oz.
	239'2" to 240'6"	5.96 oz.
	240'6" to 243'6"	0.26 oz.

In 1946 the Freeport Exploration Company pumped out the shaft and sampled the old workings. They then optioned the property and carried out some drilling. Only the last two holes are reported to have encountered encouraging values and the option was allowed to lapse. The data obtained by Freeport is not available.

A plan of the 100 foot level at the time the shaft was pumped out is attached.

Conclusions

The various intersections and gold occurrences cannot be correlated reliably because of insufficient data regarding the structures in which the veins occur.

Andowan Mines should obtain the information which presumably is in the possession of the Freeport Exploration Company.

A detailed geologic map should be made of claims No. 4304 and 4301, and an attempt made to plot all the surface, drill hole, and underground data in plan and section. No further drilling should be attempted until a structural pattern is determined so that the present data can be correlated.



D. H. Yardley
D. H. Yardley P. E.

Feb. 18/57

COMPLETED 11/20/1946
 DEPTH 201'
 NO. 1

DIAMOND DRILL CORE LOG

Property Mayflower

COORDINATES
 ANGLE OF HOLE 50°
 ELEVATION
 Strike S 11° E

ROCK	DESCRIPTION	CORE RECOVERED	SAMPLE		ASSAY	VALUE	REMARKS
			FOOTAGE	NO.			
- 24	Casing						
- 27.5	Sheared basic volcanics pyrite blebs, quartz	3.5					
.5- 29	Lost core	1.5					
- 30.5	Basic volcanics	1.5					
.5- 37	Brecciated and silicified sparse sulphides	6.5	30.5- 34' 34 - 37	39 40		Tr .005	
- 43	Brecciated volcanics - No quartz - sulphides	6	39 - 40	41		Tr	
- 44.5	Quartz vein - galena & pyrite	1.5	43 - 44.5	42		Nil	
.5 - 49.5	Basic volcanics sheared with carbonate-stringers & blebs of pyrite	5.0					
.5- 50.5	Lost core	1.0					
.5 - 53	Basic volcanics	2.5					
- 55	Lost core	2.0					
- 58	Basic volcanics	3.0					
- 62.5	Altered volcanics - sparse pyrite	4.5					
.5 - 64	Lost core	1.5					
- 82.5	Green carbonate - quartz stringers in stock work pattern-considerable coarse sulphide	18.5	74 - 79	43		.005	
.5- 84.5	Black unaltered volcanics schist	2.0					
.5 - 97.5	Altered volcanics - narrow quartz stringers - carbon- ated - pyrite & arsenopyrite	3.0	94.5- 97.5	44		.01	
.5 - 100	Quartz vein - inclusions of carbonated volcanics - pinkish color-pyrite & ar- senopyrite	2.5	97.5-100	45		.005	

RECOVERY %
 ASSAYED BY Halleybury Assay Office

COORDINATES
 ANGLE OF HOLE 60°
 ELEVATION
 Strike S 4° E

DIAMOND DRILL CORE LOG

166.51
 1

DEPTH
 NO.

Property: Mayflower

#2
 DD
 H

ROCK	DESCRIPTION	CORE RECOVERED	SAMPLE		ASSAY	VALUE	REMARKS
			FOOTAGE	NO.			
- 18.5	Casing						
5- 52.2	Basic volcanics - calcite stringers with pyrite blebs	33.7					
2- 53	Lost core	0.8					
-65	Same as 18.5-52.2	12.0					
- 66.8	Lost core	1.8					
8- 70	As above						
- 30.7	Fine grained medium volcanics-vein material	10.7	70.8- 73.7	49	Tr		
	70.8 - 76.8 mostly quartz with sparse sulphides - some carbonitization		73.7- 76.8	50	Tr		
7-108.7	Vein-white quartz with carbonated greenstone inclusions - pyrite, arsenopyrite & chalcopyrite mostly confined to inclusions	28.0	30.7-85.0	51	.005		
			35.0-90.0	52	Tr		
			90.0-95.0	53	.005		
			95.0-100.0	54	Tr		
			100.0-105.0	55	Tr		
			105.0-108.7	56	Tr		
7-120.0	Volcanics well silicified & mineralized with pyrite	11.7	108.7-110.0	57	Tr		
			110.0-112.5	58	Tr		
			112.5-115.0	59	Tr		
			115.0-117.5	60	.03		
			117.5-120.0	61	.01		
0-121.3	Quartz well mineralized with pyrite	1.3	120.0-122.5	62	.03		
3-138.2	Vein-quartz & schist - schist somewhat carbonated-considerable pyrite	16.9	122.5-125.0	63	.05		
			125.0-127.5	64	.04		
			127.5-130.0	65	.01		
			130.0-132.5	66	.005		
			132.5-135.0	67	.015		
			135.0-137.5	68	Tr		
			137.5-140.0	69	Tr		

RECOVERY %
 D BY
 ASSAYED BY

HOLE NO. 3
 COORDINATES
 ANGLE OF HOLE 50°
 ELEVATION
 Strike S 20° E

DIAMOND DRILL CORE LOG
 DD #3

Property Mayflower

ROCK	DESCRIPTION	CORE RECOVERED	SAMPLE		ASSAY	VALUE	REMARKS
			FOOTAGE	NO.			
0-18.0	Casing						
0-32.0	Andesite - Altered with sparse sulphide mineralization	14					
0-35.0	Lost core						
0-49.0	Andesite - altered with sparse sulphide mineralization	14					
0-50.0	Andesite-Brecciated & cemented with white quartz	1					
0-71.3	Vein - white quartz, sparse sulphide mineralization. Andesitic inclusions-some oxidization. Vuggy	21.3	50.0-55	75	Tr		Sample looks barren.
3-76	Andesite - Coarse altered somewhat carbonated	4.7					
0-76.7	Oxidized-Shear	0.7					
7-103.0	Andesite-Fine grained, silicified sparse sulphides	31.3	105.0-108.2	76	.01		
0-113.5	Some green carbonate Porphyry-some pyrite and arsenopyrite-Narrow quartz stringers	5.5					
5-117.0	Coarse, sheared-Some pyrite	3.5	113.5-117.0	77	.01		
0-119.0	Andesite-Brecciated, cemented with quartz. Considerable pyrite	2.0	117.0-119.0	78	.005		
0-125.0	Vein-White quartz with chloritic inclusions	6.0	119.0-125.0	79	Tr.		
2-130.5	Andesite-Hard dense. Pyrite & carbonate stringers	5.5	125.0-127.5	80	Tr		
			127.5-130.5	81	.01		

RECOVERY % 98%
 BY D.E. Cannon
 ASSAYED BYHaileyoury Assay Office.....

DATE COMPLETED July 28/46
DEPTH 255'
1

FREEPORT EXPLORATION COMPANY

DIAMOND DRILL CORE LOG

Property Mayflower (Page 2)

ROLL NO. 2
COORDINATES
ANGLE OF HOLE 50°
ELEVATION
Strike S 20° E

ROCK	DESCRIPTION	CORE RECOVERED	SAMPLE		ASSAY	VALUE	REMARKS
			FOOTAGE	NO.			
5-133.4	Andesite-Highly altered with pyrite	2.9	130.5-133.4	82	.005		
4-143.8	Porphyry altered & silicified-Not structure remaining	10.4	133.4-137.5	83	Tr		
			137.5-140	84	Tr		
			140.0-143.8	92	.03		
8-153.4	Andesite-Sheared but only slightly altered-Poor sulphides	9.6					
4-174	Quartz-Possibly silicified porphyry-Rose colored	20.6					
0-185.9	Andesite-Sheared-Slightly brecciated Quartz stringers	11.9					
9-190.4	Andesite-Brecciated-Recontoured with quartz	4.3					
4-196.8	Quartz-White vein-Barren	6.4					
3-199.8	Lost core						
9-205	Andesite-Breccia-Some pyrite in fragments	5.2	202.5-205	93	Tr		
0-206.7	Vein-Quartz abundant fine pyrite	1.7	205.0-206.7	94	.03		
7-213.7	Andesite-Brecciated-Recontoured with quartz	12.0	206.7-210.0	95	.01		
	Some good sulphides & some calcoposite		210.0-212.5	96	.02		
			212.5-215	97	.01		
			215-218.7	98	Tr		
7-219.2	Vein-Quartz with abundant fine pyrite	0.5	218.7-219.2	99	.03		
2-224	Andesite sheared - No metallic minerals	4.8					
0-227.0	Andesite sheared & silicified with some pyrite	3.0	224.0-227.0	100	.02		
0-230.0	Andesite sheared & with no metallics	3.0					

RECOVERED % 93
BY D.H. Cannon
ASSAYED BY Haileybury Assay Office

HOLE NO. 4
 COORDINATES
 ANGLE OF HOLE 60°
 ELEVATION 973
 Strike S 4° E

FREEPORT EXPLORATION COMPANY
 DIAMOND DRILL CORE LOG
 Property Mayflower

July 31/46
 1951
 1

ROCK	DESCRIPTION	CORE RECOVERED	SAMPLE		ASSAY	VALUE	REMARKS
			FOOTAGE	NO.			
1.0- 3.0	Casing						
3.0- 21.7	Porphyry-lelispur porphyry with narrow quartz stringers	18.7					
21.7- 42.7	Andesite-Black, highly sheared carbonate stringers on shear planes-Quartz stringers cutting shearing	15.2					
42.7- 70	Andesite-Pale green-Unaltered quartz stringers with sparse sulphide	26.0					
70- 75	Lost Core	24 - 25					
75- 89.7	Shearing dips 85° north. Vein-white quartz with sparse pyrite & some galena	5.0					
89.7- 109.5	Volcanic inclusions Altered & silicified andesite with erratic pyrite mineralization	14.7					
109.5- 118.5	Vein-Pink quartz containing chloritized volcanic remnants. Some heavy sulphides	19.8	97.5-100.0	102	Tr		
118.5- 135.0	Andesite-vein contact-silicified & altered at Andesite-Intensely sheared but mainly unaltered. Pale green to black color.	72.1	100.0-102.5	103	.005		
135.0- 140.0			102.5-105.0	104	.01		
140.0- 141.2			105.0-109.5	105	.01		
141.2- 161.9							
161.9- 170.0							
170.0- 180.0							
180.0- 190.0							
190.0- 200.0							
200.0- 210.0							
210.0- 220.0							
220.0- 230.0							
230.0- 240.0							
240.0- 250.0							
250.0- 260.0							
260.0- 270.0							
270.0- 280.0							
280.0- 290.0							
290.0- 300.0							
300.0- 310.0							
310.0- 320.0							
320.0- 330.0							
330.0- 340.0							
340.0- 350.0							
350.0- 360.0							
360.0- 370.0							
370.0- 380.0							
380.0- 390.0							
390.0- 400.0							
400.0- 410.0							
410.0- 420.0							
420.0- 430.0							
430.0- 440.0							
440.0- 450.0							
450.0- 460.0							
460.0- 470.0							
470.0- 480.0							
480.0- 490.0							
490.0- 500.0							
500.0- 510.0							
510.0- 520.0							
520.0- 530.0							
530.0- 540.0							
540.0- 550.0							
550.0- 560.0							
560.0- 570.0							
570.0- 580.0							
580.0- 590.0							
590.0- 600.0							
600.0- 610.0							
610.0- 620.0							
620.0- 630.0							
630.0- 640.0							
640.0- 650.0							
650.0- 660.0							
660.0- 670.0							
670.0- 680.0							
680.0- 690.0							
690.0- 700.0							
700.0- 710.0							
710.0- 720.0							
720.0- 730.0							
730.0- 740.0							
740.0- 750.0							
750.0- 760.0							
760.0- 770.0							
770.0- 780.0							
780.0- 790.0							
790.0- 800.0							
800.0- 810.0							
810.0- 820.0							
820.0- 830.0							
830.0- 840.0							
840.0- 850.0							
850.0- 860.0							
860.0- 870.0							
870.0- 880.0							
880.0- 890.0							
890.0- 900.0							
900.0- 910.0							
910.0- 920.0							
920.0- 930.0							
930.0- 940.0							
940.0- 950.0							
950.0- 960.0							
960.0- 970.0							
970.0- 980.0							
980.0- 990.0							
990.0- 1000.0							

RECOVERY % 94
 ASSAYED BY D.M. Cannon
 Haileybury Assay Office

KREPKO EXPLORATION COMPANY

COMPLETED Aug. 12/46
 DEPTH 433
 O. 1

HOLE NO. 6
 COORDINATES
 ANGLE OF HOLE 50°
 ELEVATION 965
 Strike S 4° E

DIAMOND DRILL CORE LOG

Property Mayflower

ROCK	DESCRIPTION	CORE RECOVERED	SAMPLE		ASSAY	VALUE	REMARKS
			FOOTAGE	NO.			
0- 60.0	Casing						
0- 62.6	Dacite-Soft grey green acid flow rock. Sparse pyrite	2.6					
6- 70.5	Lost core						
5- 71.5	Vein-white quartz with included carbonata	1.0	70.5- 71.5	117	Tr.		
5-145.5	Andesite-Basic volcanic flow intensely folded	69.8	71.5- 72.5	113	Tr.		
	71.5-88.7 stringers of fine pyrite.		80.0-82.5	119	Tr.		
	Rock slightly graphitic		82.5- 85.0	120	Tr.		
5-150.4	Massive quartz - Vein - carbonate - No metallics	4.9	85.0- 88.7	121	Tr.		
4-204.0	Andesite-Some graphitic material as above with isolated pyrite crystals	53.6					
0-225.5	Andesite - Same rock - Heavily carbonated - Narrow quartz stringers with grains of sulphide - nearly parallel to hole.	30.5					
5-236.6	Vein-Pink quartz-No metallic minerals	1.1					
6-257.8	Andesite-Basic volcanics as above	1.2					
8-360.2	Feldspar-chilled contact with pyrite, chalcopyrite & grey mineral (cobalt)	122.4	247.7-250.7	126	0.01	(Milton hersey)	
	Inclusions of volcanics for 20 feet from contact.						
	Feldspar porphyry.						

RECOVERY % 96.5
 D BY D.L. Cannon
 ASSAYED BY Haileybury Assay Office

COMPLETED BY:
 DEPTH: 248
 NO.: 1

COORDINATES
 ANGLE OF HOLE: 50°
 ELEVATION: 1000'
 Strike: S 10° E

DIAMOND DRILL CORE LOG

Property: Mayflower

ASSAYED BY:
 PROPERTY:

ROCK	DESCRIPTION	CORE RECOVERED	SAMPLE		ASSAY	VALUE	REMARKS
			FOOTAGE	NO.			
0- 7.0	Casing						
0- 30.3	Andesite-Fine highly chloritized pale grey-green Calcite stringers-sparse pyrite and chalcop.	23.3					
3- 30.8	Vein-Blue Grey quartz with heavy pyrite	0.5	30.0- 31.0	128	Nil		
3 - 47.8	Andesite-Chloritized similar to above	17.0					
3- 53	Vein-White quartz with volcanic remnants. Good pyrite.	5.2	47.9- 53	129	Nil		
0- 64.5	Altered quartz feldspar porphyry	11.5					
5- 69.4	Shear. Highly silicified with considerable sulphides	4.9	64.5- 69.4	130	.02		
4- 75.3	Porphyry-Same as above but not so altered.	5.9					
3- 93.4	Andesite - Pale green-very laminated-no metallic mineral.	18.1					
4-135.3	Vein-Blue Grey quartz filling in brecciated host rock Considerable sulphide mostly pyrite with sparse chalcopyrite	41.9	93.4- 98.4	131	.01		
			98.4-103.4	132	Tr		
			103.4-108.4	133	Tr		
			108.4-113.4	134	Tr		
			113.4-118.4	135	.01		
			118.4-123.4	136	.02		
1-136.6	Andesite-Unaltered laminated volcanics as above.	1.3	123.4-128.4	137	Tr.		
			128.4-133.4	138	.01		
			133.4-135.3	139	11		
1-140.6	Andesite-Highly silicified but with no metallic mineral.	.0					

RECOVERY %: 93
 BY: D.M. Cannon
 ASSAYED BY:
 PROPERTY:

COMPLETED AUG. 19/50
 DEPTH 248
 NO. 1

DIAMOND DRILL CORE LOG

Property Mayflower (Page 2)

HOLE NO. /
 COORDINATES 50°
 ANGLE OF HOLE 1000'
 ELEVATION
 Strike S 10° E

ROCK	DESCRIPTION	CORE RECOVERED	SAMPLE		ASSAY	VALUE	REMARKS
			FOOTAGE	NO.			
6-144	Unaltered pale grey with quartz eyes. Porphyry	3.4					
0-153.1	Andesite-Extremely schisted Brecciated & carbonated at contact.-Sparse pyrite.	14.1					
1-159.1	Vein.-Quartz with good pyrite. Some oxidization	1.0	153.1-159.1	140	Tr.		
1-160.0	Lost core						
0-160.4	Mud.	0.4					
4-170	Lost core						
0-173.7	Soft unaltered tuffaceous Andesite	3.7					
7-176.3	Diorite-Dike	2.6					
3-184	Andesite-Bleached & recrystallized	7.7					
0-191.2	Andesite-Laminated as above	7.2					
2-192	Lost core						
0-214.4	Andesite-Same as above	22.4					
4-215.9	Andesite. Coarse dike	1.5					
3-224.5	Andesite. Laminated as above. Occasional barren quartz stringers.	8.4					
5-225.5	Andesite. Dike	1.0					
5-248	Andesite. Same flow as above	22.5					

RECOVERY %
 ED BY ASSAYED BY

HOLE NO. 8
 COORDINATES 8
 ANGLE OF HOLE 60°
 ELEVATION 993.5
 Strike S 10° E

DEPTH # 8
 DEPTH # 14

FREEFORKI EXPLORATION COMPANY
 DIAMOND DRILL CORE LOG
 Property Mayflower

COMPLETED 2/1/46
 DEPTH 252
 NO. 1

ROCK	DESCRIPTION	CORE RECOVERED	SAMPLE		ASSAY	VALUE	REMARKS
			FOOTAGE	NO.			
0- 3.0	Casing						
0- 58.2	Unaltered-sparse pyrite somewhat oxidized-Andesite	52.6					
	Lost Core 23.4-25.0						
	26.8-27.8						
2- 7.7	Very silicious quartz Porphyry	0.5					
7- 62.7	Andesite-Highly chloritized Graphitic on shear planes	4.0					
7- 63	Vein-Pink quartz with some pyrite	0.3					
10- 70.6	Andesite-Amygdaloidal-schist	7.6					
16- 77.2	Porphyry-Quartz porphyry-refractured & silicified-sparse pyrite	6.6					
2- 80.3	Quartz porphyry with included remnants of schist	3.1					
3- 87.3	Andesite-chloritized schist	7.0					
	containing quartz stringers parallel to shear planes						
3- 103.3	Quartz porphyry-Similar to above	16.0					
3- 119	Andesite-chloritized schist-Malcolite stringers-Some complicated folding	14.7					
10- 120.9	Vein-precipitated volcanics with quartz-carbonate fillings pyrite	2.8	113.0-120.9	141	Tr		
9- 142.6	Andesite-silicified-some pyrite	21.5	133.6-142.7	142	M41		
16- 157.4	Vein-silicified-precipitated volcanics-heavy silicified-	14.2	142.6-148	143	.02		
			149 -150	144	.01		

RECOVERY % 98
 BY D.L. Cannon
 ASSAYED BY Milton Hersey Co. 14

DEPTH 252
NO. 1

DIAMOND DRILL CORE LOG

Property Mayflower (Page 2)

COORDINATES
ANGLE OF HOLE 60°
ELEVATION 929.5
Strike S 10° E

ROCK	DESCRIPTION	CORE RECOVERED	SAMPLE		ASSAY	VALUE	REMARKS
			FOOTAGE	NO.			
150-157.4	Iron-Abundant sulphide-Pyrite, chalcopyrite		150-155	145	Tr		
157.4-160.8	Schistated-quartz stringers Sparse sulphide-Andesite	3.4	155-157.4	146	Tr		
160.8-163.5	Andesite-Highly silicified	2.7					
163.5-169.7	Vein-Blue & white quartz with some pyrite	6.2	163.5-166.5	147	.04		
169.7-166.8	Andesite-Pale grey green unaltered. Occasional sulphide stringers.	27.1	166.5-169.7	148	Tr.		
166.8-199	Vein-blue quartz with heavy sulphide-some oxidation	2.2	196.3-199	149	Tr.		
199-200.6	Iron formation-Black magnetic iron with pyrite seams & quartz stringers	1.6					
200.6-216.7	Andesite-Sheared-Sparse pyrite.	16.1					
216.7-217.8	Iron formation-Same as above	1.1					
217.8-252	Andesite-Sheared but shearing gradually disappears & rock becomes laminated. Small quartz vein with abundant pyrite	14.2	218.3-219.2	150	.01		
	219.3-219.2						

RECOVERY %
BY
ASSAYED BY

46

DEPTH 149
NO. 1

DIAMOND DRILL CORE LOG

COORDINATES
ANGLE OF HOLE 50°
ELEVATION 999.8
Strike S 10° E

DPH # 400

Property Mayflower

ROCK	DESCRIPTION	CORE RECOVERED	SAMPLE		ASSAY	VALUE	REMARKS
			FOOTAGE	NO.			
0- 10.0	Casing						
0- 33.3	Andesite-Pale green-sheared-narrow calcite stringers-sparse sulphide	23.3					
6- 41.2	Rhyolite-Sheared & amygdaloidal-No sulphides	7.9					
2- 47.2	Andesite-Unaltered-Occasional quartz stringers	16.0					
2- 36.5	Vein-Brecciated volcanics with quartz filling. Lost core 67.4- 68	28.7	80.0- 83.2	151	Tr.		
5-111.0	Andesite-Sheared and carbonated	24.5					
5-113.0	Vein-Barren quartz	7.0					
9-119.5	Quartz porphyry-sheared & slightly altered	1.5					
9-123.8	Andesite-Schist-Graphitic shear planes - Quartz & chalcopryite stringers	9.3	119.5-120.7 125.7-127	152 153	Tr. .10		
-133.3	Rhyolite-Porphyrific	4.5					
-134.7	Andesite-Schist as above	1.4					
-139.5	Rhyolite-Porphyrific	4.8					
-143.8	Andesite-schist as above	4.3					
-147.0	Iron formation-Alternate bands of cherty quartz-hematite & pyrite	3.2					
-149.0	Andesite-Unaltered tuff	2.0					

RECOVERY % 99
BY D. G. Cannon

ASSAYED BY Milton Hersey Co. Ltd.

FREEFORK EXPLORATION COMPANY

COMPLETED AUG. 31/46
DEPTH 350
O. 1

HOLE NO. 10
COORDINATES
ANGLE OF HOLE 50
ELEVATION 976.0
Strike N 4. W

DR # 10

DIAMOND DRILL CORE LOG

Property Mayflower

ROCK	DESCRIPTION	CORE RECOVERED	SAMPLE		ASSAY	VALUE	REMARKS
			FOOTAGE	NO.			
0-29.0	Casing						
0-46.8	Shale-Soft dark grey to black pyrite & quartz stringers-some malachite stain. Lost core 40.5-41.5	16.8	45.3-46.8	154	TR		AG. 12
5-62.2	And-site-highly chloritized & schistose	15.4					
2-91.3	Bi-foliate schist-soft pale green, soapy schist planes 151' with core	29.1					
3-94.9	Iron formation. Black magnetic. Bands of pyrite & magnetite.	3.6					
2-126.1	Acidic volcanics. Slightly sheared. Isolated quartz stringers with associated rusty oxidation.	31.2					
1-163.6	Diorite. Black fine grained slightly sheared-sparse cubic pyrite	37.4					
5-185.9	Acidic volcanics. Pale green s. ft. No metallic minerals. 6" barren quartz vein at 134'.	22.4					
9-191.2	Contact phase-Acid volcanics and intrusive rhyolite	5.3					
2-195.2	Vein. Grey quartz with pyrite & calcopyrite	1.	191.2-195.2	155	.02		
2-205.3	Acidic volcanics. Intimate mixture of rhyolitic and andesitic volcanics. Slightly porphyritic.	12.1					

RECOVERY %
D BY
ASSAYED BY

HOLE NO. _____
 COORDINATES _____
 ANGLE OF HOLE 50°
 ELEVATION _____
 Strike N 7° W

11 H 10
 PROPERTY MAYFLOWER

COMPLETED Oct. 2, 1946
 DEPTH 160
 NO. 1
 DIAMOND DRILL CORE LOG

ROCK	DESCRIPTION	CORE RECOVERED	SAMPLE		ASSAY Au %/ton	VALUE Au \$	REMARKS
			FOOTAGE	NO.			
0.0-23.0	Casing						
0.0-42.2	Acid volcanics-Quartz stringers 40-42.2 but metallic minerals sparse Structure dipping 35° N	19.8					
2-46.7	Stringers of pyrite quartz and hematite	4.5					
7-51.2	Laminated	4.5					
2-80.3	Very altered-stringers of quartz and epidote	29.1					
3-89	ES-67 structure nearly parallel to hole	8.7					
0-100.5	Slaty sediments quartz stringers along bedding planes	19.5					
5-111.6	Black and fine grained as in hole 10	3.1	108.5-111.6	165	.14	4.50	check .13 gzs
5-115.9	Grey quartz with pyrite and chloropyrite	4.3					
9-137.2	Slaty sediments - fine grained andesite	21.3					
2-142	Contact phase of porphyry	4.8					
-150	Porphyry-frozen contact (relations?) of greenstone	15.0					

RECOVERY % 100
 BY W. F. Cannon
 ASSAYED BY Wilton Hersey Co. Ltd.

DATE BEGUN Oct. 10/46
 DATE COMPLETED Oct. 11/46
 TOTAL DEPTH 203
 DRILL NO. 1

FREEPORT EXPLORATION COMPANY

HOLE NO. 12
 COORDINATES
 ANGLE OF HOLE 50°
 ELEVATION
 Strike N 4° W

DIAMOND DRILL CORE LOG

Property Mayflower

ROCK	DESCRIPTION	CORE RECOVERED	SAMPLE		ASSAY ozs/ton	VALUE	REMARKS
			FOOTAGE	NO.			
0.0-25.0	Casing						
25.0-70.0	Fine grained pale green acid volcanics	45.0					No metallic mineral
70.0-82.9	Black coarse to fine sheared rock. Mixture diorite and sediments	12.9					
82.9-95.1	Highly silicified Andesite	12.2					
95.1-96.8	Diorite	1.7					
96.8-98.3	Slatey sediments	1.5					
98.3-105.0	Fine grained andesite	6.7					
105.0-107.8	Diorite	2.8					Gradational contact with volcanics
107.8-109.3	Slatey sediments	1.5					
109.3-129.3	Laminated volcanics Occasional quartz stringers and some pyrite	19.5					
129.3-132.5	Quartz vein-Mostly white quartz with sparse sulphide	3.7	129.3-132.5	166	.01	.35	
132.5-142	Laminated volcanics	9.5					
141.0-146.7	Quartz vein-white and grey quartz with erratic and chalcopyrite	1.7	141-143.9	167	.02	.70	
146.7-150.6	Rhyolite, Massive fine grained	3.9	143.9-146.7	168	.01	.35	
150.6-153	Vein-Grey quartz with pyrite & chalcopyrite. Volcanic remnants	2.4	150.6-153	169	.04	1.40	
153.0-177.2	Highly silicified andesite sparse metallics	24.2					
177.2-183.3	Vein-Pinkish quartz brecciated	6.1					
183.3-199.5	Andesite-sheared & brecciated-silicified-pyrite-chalcopyrite	16.2	183.3-199.5	170	.20	7.00	
			199.5-203.0	171	1.3.5		

CORE RECOVERY %
 LOGGED BY

DATE BEGUN Oct. 13, 1946.
 DATE COMPLETED Oct. 15, 1946.
 TOTAL DEPTH 300
 DRILL NO. 1

FREPORT EXPLORATION COMPANY

DIAMOND DRILL CORE LOG

HOLE NO. 13
 COORDINATES
 ANGLE OF HOLE 60°
 ELEVATION

Property "Aulflower"

ROCK	DESCRIPTION	CORE RECOVERED	SAMPLE		ASSAY OZS/TON	VALUE \$	REMARKS
			FOOTAGE	NO.			
0.0- 40.0	Casing						
40.0- 42.7	Laminated volcanics	2.7					
42.7- 43.8	Iron formation	1.1					
43.8- 47.7	Lost core						
47.7- 59.1	Slate-lost core	8.7					
	43.8-50.0						
	50.6-51.6						
59.1 - 60.0	Lost core						
60.0- 66.9	Acid to basic volcanics Pale green to black in color.	6.9					Lenses of quartz along shear planes
66.9- 74.1	Iron formation-slatey sediments with bands of pyrite & chert.	7.2					
74.1-78.2	Sheared andesite	4.1					
78.2- 79.2	Iron formation	1.0					
79.2- 95	Pericite schist	15.2					
95.0-104.5	Laminated acid volo. Dip vertical to hole	9.5					
104.5-115.0	Diorite-dusty vuggy quartz at 114	10.5					
115.0-123.0	Laminated volcanics. Slightly rusty on shear planes. Lost core	36.6					
	147.3-148.7						
148.0-148.7	Diorite	5.7					
153.7-191.3	Laminated volcanics sparse pyrite	32.6					
191.3-197.0	Diorite	5.7					
197.0-200.9	Laminated volcanics Altered at diorite contact	3.9					
200.9- 11.2	Fine to coarse diorite Disseminated pyrite	10.3					
			208.5-211.2	171			"M11

CORE RECOVERY %
 LOGGED BY

ASSAYED BY

ANDOWAN MINES LIMITED, GROUP NUMBER ELEVEN

This is a map of the Diamond Drill and underground exploration on our Group Number Eleven, now under option to the Freeport Exploration Company, Limited, which is at present testing this deposit with a heavy Diamond Drill.

As indicated on this map, all of the values shown are of very good grade, and give reason to hope for an ore body. The fact that such a company as the Freeport Exploration saw fit to option this property indicates clearly that in their opinion it has merit.

From Andowan's point of view, it is of particular benefit to have other companies carry the load of testing our Gold properties. The law of averages on Gold prospects proves that the chances of a producer are much less than those on base metal prospects. Therefore, we have managed to keep our expenditures to a minimum on our Gold prospects.

If a property is proved we gain substantially, and if not, we are out but little. As most of you are aware, such a prospect as our Group Number Eleven is usually all that is required to float a company of the same capitalization as Andowan, and where such values can be secured a great ado is sometimes made before knowing if there is an ore body of commercial size.

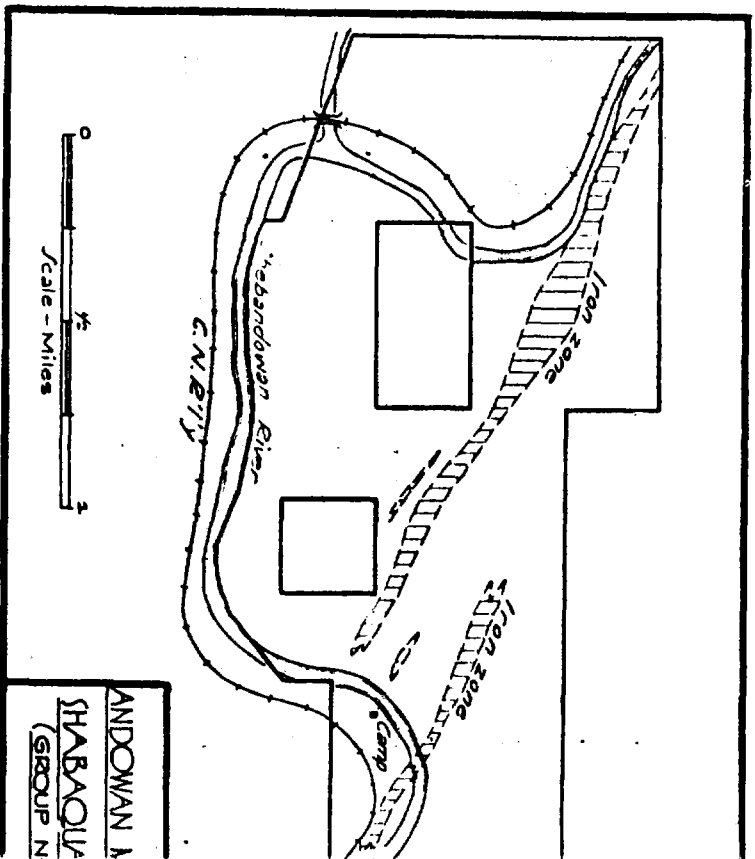
ANDOWAN MINES LIMITED, GROUP NUMBER TWELVE

Further reference to Gold prospects brings us to our Group Number Twelve, which was staked because of the small veins carrying considerable native or free Gold, as well as covering what appears to be one of the major shear zones in this field.

Our test work on these claims has indicated nine individual quartz veins striking mostly at right angles to the main shearing which is wide and well mineralized. It will require only a small expenditure to prove this ground to a point of interest one way or the other.

From the amount of free Gold in the small veins, it is hoped that the main shearing will prove the parent ore body. Further test work will be carried out this year.

MAP NO. 6



ANDOWAN MINES LIMITED, GROUP NUMBER THIRTEEN

This map indicates the very extensive Iron zones on our Group Number Thirteen. From the data supplied by the Pickands Mather Iron Company's report with our own magnetic surveys and other testings, a definite proof now exists. property is of major size.

So that you may have a simple and a complete picture on this property, quote excerpts from our Engineer's report, followed by excerpts from the Mather report, and finally from a letter written by one of America's foremost experts who has recently made an analysis of the above reports.

REPORT OF THE BUREAU OF MINES 1901

MAYFLOWER MINE

The Mayflower Mine consists of locations K 390 and 391, which contain 40 acres each, situated about 10 miles east of Sturgeon Falls on the Lower Seine. I made the trip by canoe up the Seine from Mine Centre in less than a day on June 29, and returned the following day. There are two short portages on the river, and a five mile trail from the end of the canoe route. The new railway will pass within about half a mile of the shaft. The property is owned by the Rain River Development Company of London, Limited; capital, £300,000. The manager of the mine is Arthur W. B. Whitely. The total force is 11; number of miners,

The formation is chlorite schist, with a strike of nearly north and south. A small mass of intrusive granite comes in within 100 feet of the shaft.

The main vein has a vertical dip, and a strike of north and south. It is traceable for 100 feet in a straight line and about 70 or 80 feet north of the shaft it appears to bend sharply to the east, according to outcroppings that are found at intervals, but it is impossible to be certain without more stripping. It is about six feet wide in the shaft, consisting of quartz and schist mixed, with rather indefinite walls. On the surface it is exposed in one place 10 or 12 feet wide. Leaf iron pyrites is quite plentiful, and zinblende occurs also in small amounts.

A 7 by 9 foot vertical shaft has been sunk to a depth of 90½ feet on the vein at the points where the latter crosses the boundary between the locations. A substantial collar has been constructed to a depth of 17 feet. At a depth of 43 feet there is a sublevel, with a 6 by 6½ foot drift 13 feet north, a 4½ by 6½ foot crosscut west 32 feet and a crosscut east 5 feet. Work has been discontinued at this level. The first level is at a depth of 75 feet. There is a drift north 34 feet, which has been dammed up at the entrance and utilized as a pump station, and a No. 4 Cameron pump installed. A drift has been driven south from the shaft in the sublevel 8½ feet.

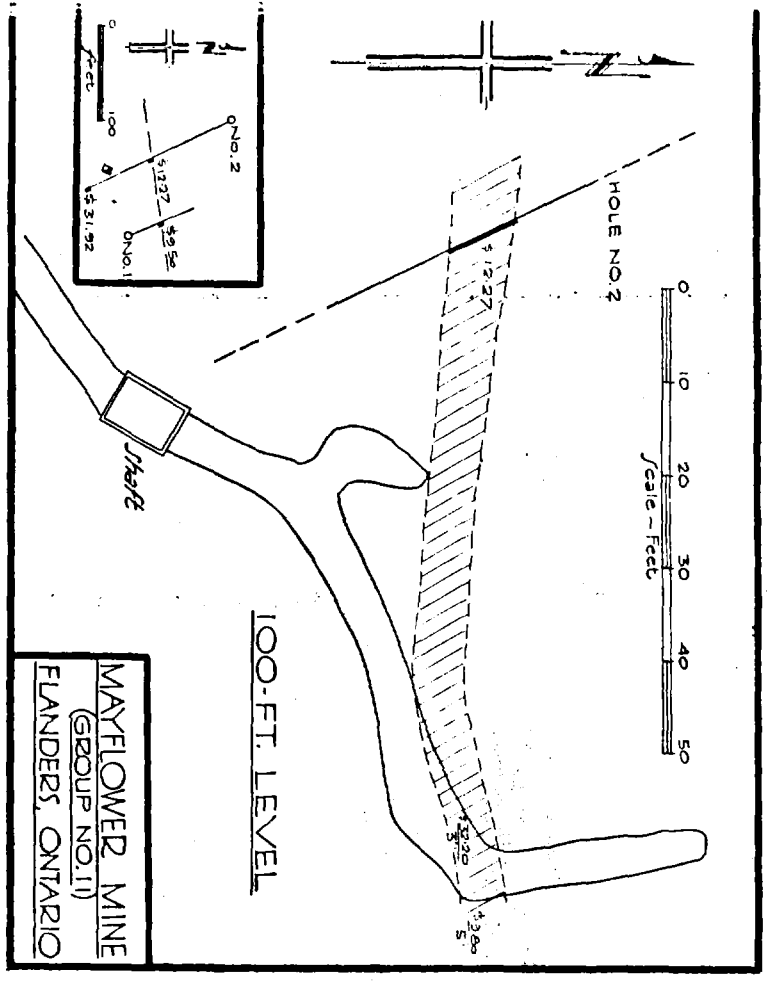
Mining work was suspended just the day before my inspection, owing to the countering of a flow of water, which could not be handled satisfactorily by the present pump, but the delay should not last very long. The mouth of the shaft is at a sufficient elevation to give good dumping facilities. The hoisting plant consists of the following; duplex, 5 by 8 inch hoist, 3/4 inch steel wire cable, 750 lb. steel bucket, 36 inch sheave, 20 foot head frame, economically and newly constructed, and a 30 h.p. locomotive style boiler. Blasting is done by battery.

The following buildings are on the property; boarding and sleeping camp, camp, hoist house, blacksmith shop and powder house.

The following instructions were left in the Inspector's book: "(1) Scale carefully; some insecure masses of rock were found. (2) Provide guard rail at mouth. (3) Construct ladderway as far as the 75 foot level according to the M. Act."

... authorization and structure on this property appear identical

MAP NO. 5



9

Report by Mackenzie, 1944
W. J. Mackenzie
1944
4 - 7 - 44

This is a gold prospect that was opened up some years ago by the Mayflower Mining Company Limited, by shaft sinking, drifting and cross-cutting. Some interesting results were obtained by the company but no effort was made to follow up the ore shoots indicated and no thought was given to the geology.

This property has excellent mine making possibilities and efforts should be made to have someone open up the mine after the war.

Group No. 12 consists of three unsurveyed claims, T.F. 4414, 15 and 16 situated about two miles southeast of Mine Centre station.

This is a gold prospect that has a number of promising quartz veins on the property averaging one to seven feet in width. It is a geological bet that warrants exploration after the war.

The company also have a group of claims under option with excellent showings of iron ore but as certain tails in connection with the deal have not been entirely ironed out, no mention is made as to the location of the ground.

SUMMARY AND RECOMMENDATIONS

The majority of the groups under discussion are ready for patent and the management is to be complimented on the systematic way in which the assessment work on the various claims has been carried out.

It will be noted that some of the groups are held because of their value as to location while others are held because of showings that warrant extensive exploration.

12. The properties acquired by the Company are set out in the accompanying report of D. H. Yardley, Registered Professional Engineer, dated February 18, 1957, and are designated therein as Groups 2, 3, 5, 8, 9, 10 and 11.

Groups 2 and 3 of the five patented claims comprising part of Group No. 5, Group 6 and two of the patented claims, namely, FF 3419 and FF 3420 in Group 8 were acquired by the Company under an agreement dated 27th February, 1939 from Kashabowie Mining Syndicate Limited.

Included in the agreement also were other claims designated as Groups 1, 4 and 7 which were subsequently abandoned.

In accordance with the agreement 1,299,995 shares of the capital stock of Andowan Mines Limited were issued as fully paid and non-assessable to the Kashabowie Mining Syndicate Limited in consideration of the following assets and liabilities turned over to the former company.

Mining properties — (Groups 1 to 8)	\$20,925.00
Development costs	21,934.61
Sundry Assets	862.03
	<hr/>
	\$43,721.64
Less Sundry Liabilities	3,471.64
	<hr/>
Net	\$40,250.00

385,000 of the said shares have been transferred by the shareholders to the Chartered Trust Company, 34 King Street West, Toronto, to be held by it for the benefit of the treasury of the Company.

The nine unpatented claims comprising the balance of Group No. 5 and being TB 77232, TB 77233, TB 77234, TB 83216, TB 83217, TB 83218, TB 83219, TB 83220, TB 83221 were acquired by staking.

The balance of Group No. 8 consisting of FF 3696 which is held in the name of Andowan Mines Limited and other claims which have been abandoned were acquired from Violet May Anderson, Kashabowie, Ontario, and Frank P. Hunt, 63 East Avenue, Rochester, N.Y., U.S.A., at a cost of \$2,899.82 by the issue of 13,181 fully paid shares of the capital stock of the Company at a price of 22 cents per share.

The claims included in Group 6 were sold in October, 1955 to the Newkirk Mining Corporation Limited for \$15,000.00 cash and 300,000 shares of Bandowan Mines Limited. Of the 300,000 shares, 30,000 were to be free and the remaining 270,000 held in escrow subject to release on the consent of the board of Directors of Bandowan Mines Limited and the Ontario Securities Commission.

As noted previously, Ray Smith of Shebandowan, Ontario, received in December, 1956 5,000 shares of the capital stock of Andowan Mines Limited for assisting in negotiating the sale of the Group 6 claims to Newkirk Mining Corporation Limited.

Group No. 9 which was acquired by staking consists of two properties referred to as Upton property and the Dorion Mine property. The Upton property consists of two patented claims TB 29586 and TB 29615, and six unpatented claims TB 84882, TB 84883, TB 84884, TB 84885, TB 84886, TB 84887; and the Dorion Mine property consists of two patented claims TB 27345 and BT 27346 and three unpatented claims TB 84888, TB 84889, TB 85153.

C. E. Anderson and F. E. Anderson of Kashabowie, Ontario, each have a five per cent non-assessable interest in claims TB 29586 and TB 29615.

Group 10 consists of three patented claims, FF 2706, FF 2707 and FF 2708 acquired by the Company (along with other claims since abandoned) from Mrs. Maude R. Jackson, Fort William, Ontario, under agreement dated 11th June, 1945, for \$10,000.05. This was paid as follows: \$4,000.00 in cash and 17,143 shares of the capital stock of the Company allotted and issued as fully paid and non-assessable at a price of 35 cents per share.

Group 11 consists of six patented claims FF 4300, FF 4301, FF 4302, FF 4304, FF 4305 and FF 4320. These claims were acquired (together with other claims since abandoned) from Violet May Anderson, Kashabowie, Ontario, at a cost of \$1,000.00 by the issue of 5,000 fully paid and non-assessable shares of the capital stock of the Company.

13. In July, 1949, the Company purchased from Caesar Cramette, Fort William, Ontario, a group of claims (Group 16) comprising FF 5628 to FF 5637, both inclusive, for 12,000 fully paid shares of the capital stock of the Company at a price of 25 cents per share. These claims were subsequently abandoned.

In April, 1952, the Company paid \$12,500.00 to Charles H. Moss, Port Arthur, Ontario, for a group of claims (Group 17) in the Whitefish Lake area by the issue of 50,000 fully paid shares of the capital stock of the Company. These claims were subsequently abandoned.

KERR ADDISON MINES LIMITED

KENORA, ONTARIO

TELEPHONE 488-8434

MAILING ADDRESS: BOX 390

October 12, 1972.

Mr. E.L. Palmer,
DRYDEN, Ontario.

Dear Mr. Palmer:

I am returning your data covering the 1946 Freeport drilling at the Mayflower Mine. Certainly, the gold values are, as you suggested, not too interesting; but, be that as it may, I was counting on our sampling to add a pinch of joy to the picture. But alas!, after waiting two weeks for Warnock Hersey's reply, a phone call yesterday revealed that they hadn't received our samples. A check with Greyhound revealed that they left Kenora for Winnipeg on September 28; however, they apparently did not arrive at their destination and are presumably lost or stolen. This explains the delay, and although the samples may yet be found, my opinions would probably not be too much altered.

The drill intersected values are mainly confined to quartz veining. A condition which, although not necessarily bad, in this case tends to rather restrict our potential. Also, the drill coverage in the shaft area was fairly thorough, and seems to indicate a very limited auriferous zone, perhaps related to shearing peripheral to the indicated porphyry.

An optimistic approach to the property could involve mapping and magnetic surveying with subsequent drilling along the porphyry contacts if discernible.

A more general approach however, involving a study of the area, with subsequent acquisition of property covering area of interesting geological structure would be my attack if work in the area were contemplated. I do not however expect at this time, to initiate such a project; however if one were planned, the Mayflower would probably be a property worth having.

Incidentally, the Bear Narrows showing which we visited

KERR ADDISON MINES LIMITED

KENORA, ONTARIO
TELEPHONE 469-5434
MAILING ADDRESS: BOX 390

- 2 -

has definitely been investigated by Inco. It is, at present, open for staking. The Bear Narrows Channel itself, which has a similar strike to the moly and copper bearing quartz veins we observed was itself apparently incompletely tested.

Please give our best regards to Mrs. Palmer.

Yours truly,



S.M. Sober.

SMS/r
Encl.

P.S. If the samples are located, the assay results will be forwarded immediately.

KERR ADDISON MINES LIMITED

KENORA, ONTARIO
TELEPHONE 468-5434
MAILING ADDRESS: BOX 390

October 25, 1972.

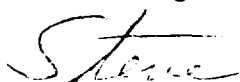
Mr. E.L. Palmer,
Dryden, Ontario.

Dear El:

We have located the samples, and they have been assayed for Au and Ag. (The box had been placed in the wrong bin at the Winnipeg Bus Depot).

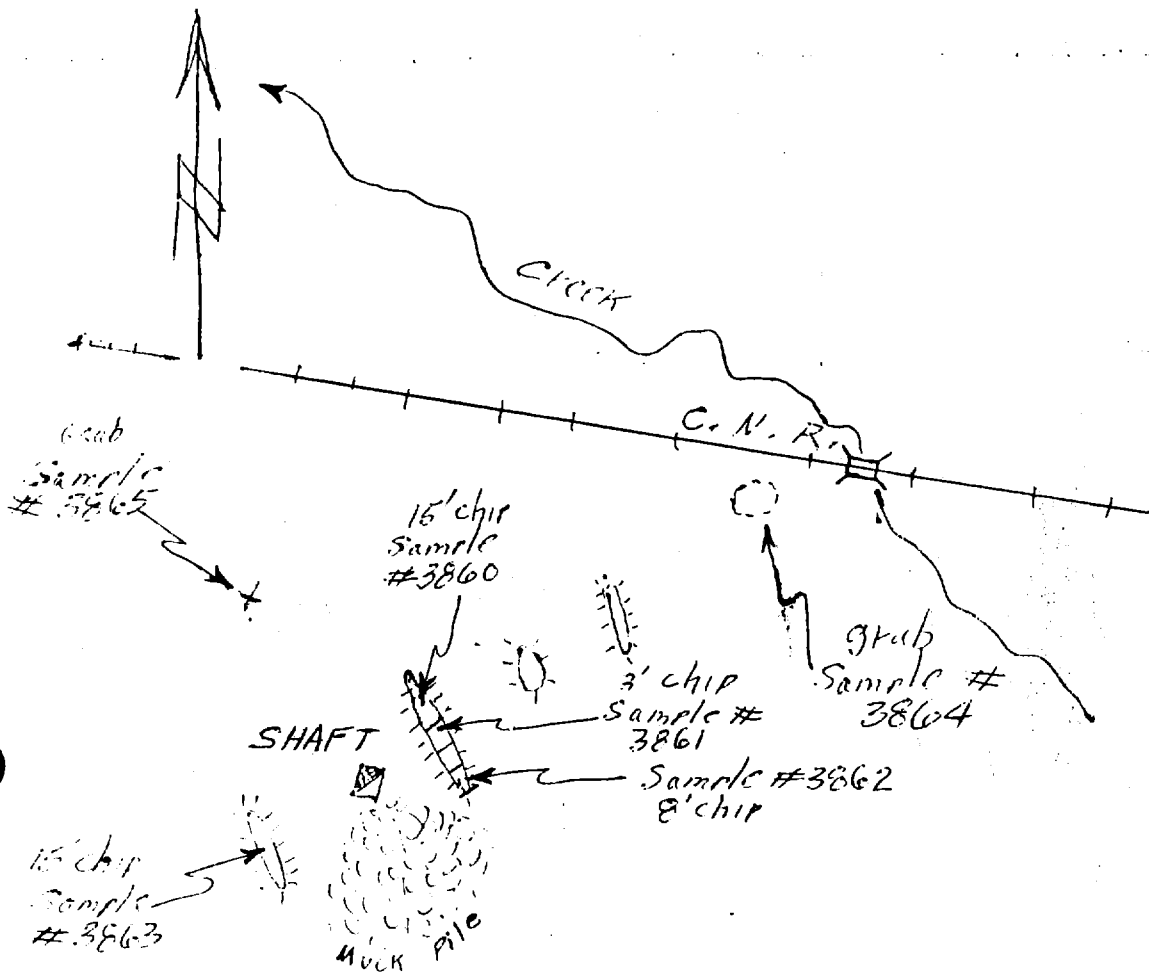
Copies of the assayer's report are enclosed. Unfortunately the results don't look too interesting. Hopefully, we will have other more encouraging mutual interests in the near future.

Best Regards,



S.M. Sober.

SMS/r
Encl.



Sample Location Sketch
 Andowan M.L. Mayflower,

1" = 200'

Nov 25, 7
 S.M. Sh



1154 Sanford Street, Winnipeg 21, Man. . . . Tel. 786-7546

WINNIPEG October 19, 1972

ASSAY OF 6 SAMPLES ORE.

RECEIVED October 18, 1972 FROM Kerr Addison Mines Ltd., Box 390, KENORA, ONT.

LABORATORY NUMBERS	MARKS ON SAMPLES	GOLD		SILVER		PER CENT.	PER CENT.	PER CENT.
		OUNCES PER TON OF 2000 LBS.	VALUE PER TON	OUNCES PER TON OF 2000 LBS.	PER TON VALUE			
M 1861	3860	.02		.03				
1862	3861	Trace		.02				
1863	3862	.02		Trace				
1864	3863	.04		.03				
1865	3864	.02		.04				
1866	3865	.01		.02				
	cc Kerr Addison Mines Ltd.							
	P.O. Box 91, Commerce Court West							
	TORONTO, Ontario							
	ATTN: Mr. G. M. Hogg.							

THE FOLLOWING CURRENT QUOTATIONS:
THE VALUES WHERE GIVEN ARE BASED ON

Gold at.....per oz.

Silver at..... "

WARNOCK HERSEY INTERNATIONAL LIMITED
PROFESSIONAL SERVICES DIVISION

Per

REPORT ON THE MAYFLOWER PROPERTY

ANDOWAN MINES LIMITED, PORT ARTHUR, ONTARIO

Kashabowie, Ontario
June 7th, 1946.

The Mayflower Mine Property consists of seven surveyed claims and five unsurveyed claims. about $1\frac{1}{2}$ miles west of Flanders station, on the Canadian National Railway, from Port Arthur to Fort Frances. The power line crosses the south portion of the claims so that they are very well located for power and transportation.

The claims lie in rocks of Keewatin age. Several quartz veins have been located ranging in width from 1 to 10 feet, and striking generally N 85° E. These veins lie in and adjacent to an intrusion of quartz porphyry on the north and west of the shaft. The shaft was sunk 100 feet about 1900, and short workings driven on the 50 foot level. The 100 foot level is shown on the attached plan.

Since acquiring the property, Andowan Mines put down two drill holes in the fall of 1945, both of which returned intersections of ore grade across good widths.

No. 1 hole returned intersections of	63' to 66'	-	.50 oz.
	66' to 71'	-	.10 oz.
No 2 hole returned intersections of	122'6" to 125'	-	.83 oz.
	239'6" to 240'6"	-	5.96 oz.
	240'6" to 243'6"	-	.26 oz.

In 1946 the shaft was pumped out and the old workings sampled by Freeport Exploration Company. This work indicated a good grade ore shoot as shown on the attached plan. The additional intersections in Andowan drill holes cannot, as yet, be correlated to the known vein system, but certainly add a very great deal to the outlook. As a result of this work, an agreement has been entered into with Freeport Exploration Company which is now awaiting ratification by Andowan's Shareholders, whereby Freeport will supply the necessary financing.

It is my opinion that a thorough exploration programme has a very good chance of developing several ore shoots, while the grade indicated suggests the possibility of profitable operation.

June, 1946.

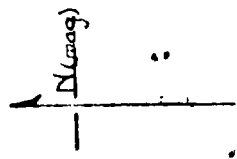
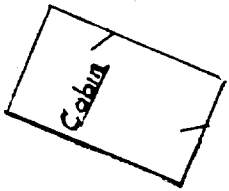
D. H. Yardley,
Mining Engineer

DDH No. 2 @ 52°

Mayflower

1" = 20'

150' to 200'



Sta. topography

DDH No. 1 @ 65°

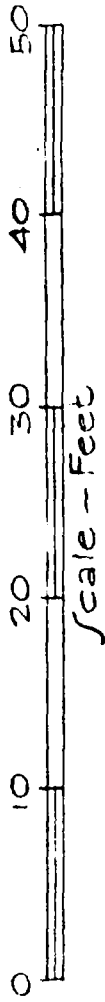
1910

1910
New

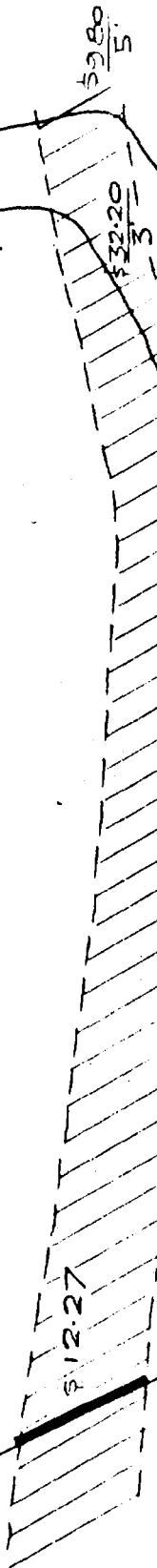
1910

30' 155' in 1910





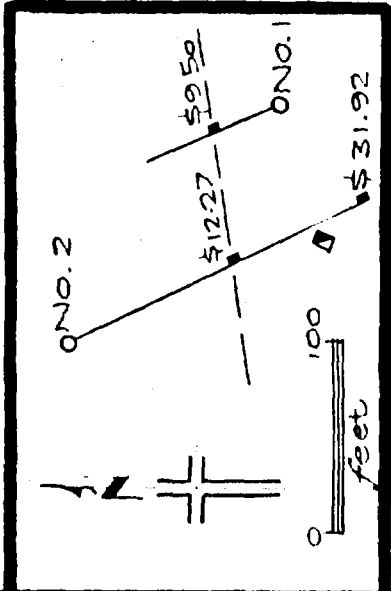
HOLE NO. 2

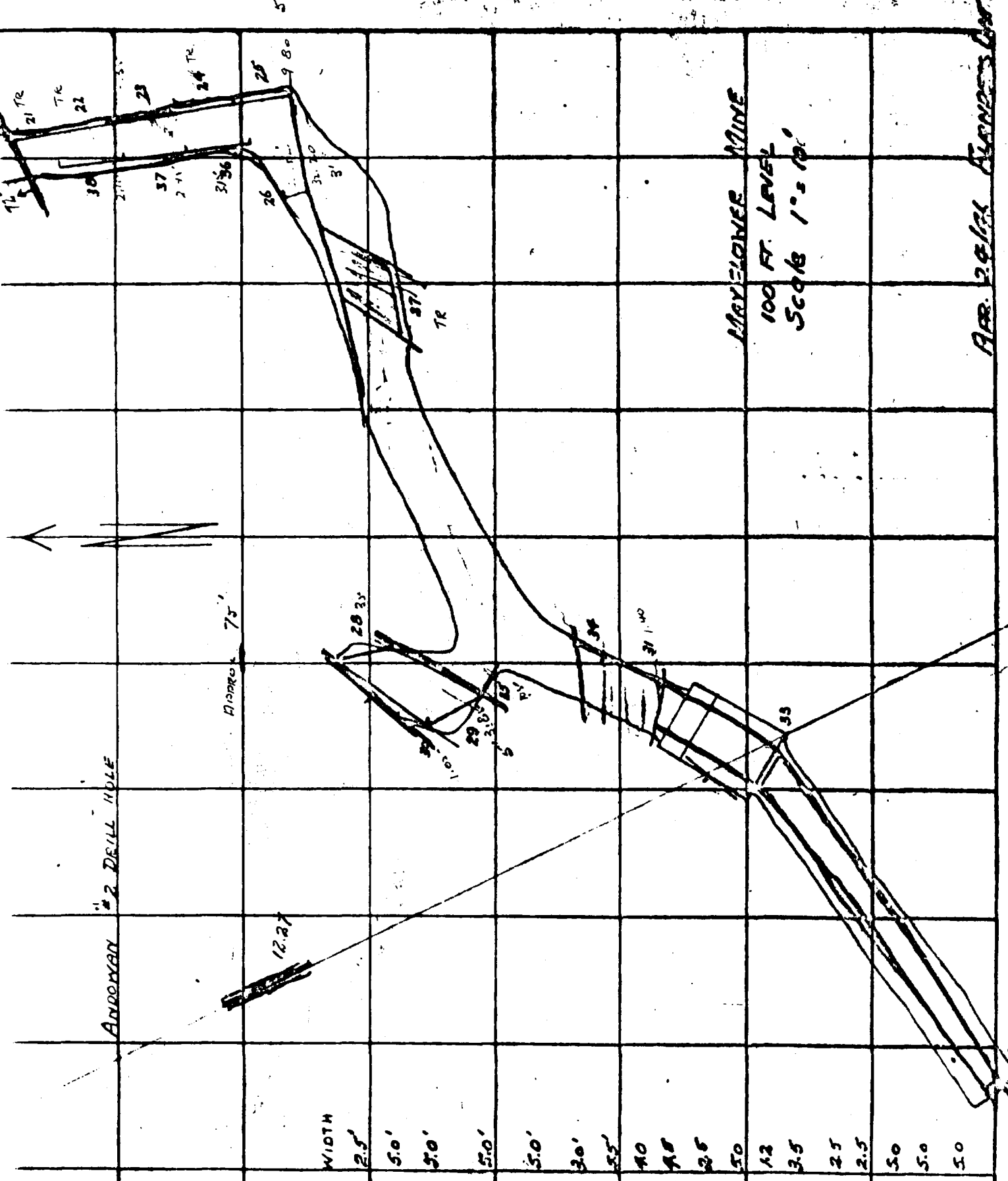


100-FT. LEVEL

Shaft

MAYFLOWER MINE
(GROUP NO. 11)
FLANDERS, ONTARIO





ANDROMAN #2 DRILL HOLE

Drift 75'

12.27

9.80

- 2.5'
- 5.0'
- 5.0'
- 5.0'
- 5.0'
- 3.0'
- 5.5'
- 4.0'
- 4.5'
- 2.5'
- 5.0'
- 1.3
- 3.5
- 2.5
- 2.5
- 5.0
- 5.0
- 5.0

MAYELOWEE MINE

100 FT. LEVEL

Scale 1" = 10'

APR. 20 1914

72

MAYFLOWER DIAMOND DRILL HOLE 1 and 2

- S. 1 Box No. 2 - Hole 1 - 56 - 59
- 2 Box No. 2 - Hole 1 - 59 - 63
- S. 3 Box No. 2 - Hole 1 - 63 - 66
- S. 4 Box No. 2 - Hole 1 - 66 - 71

- S. 5 Box No. 3 - Hole 1 - 71 - 74
- S. 6 Box No. 3 - Hole 1 - 78 - 80
- S. 7 Box No. 1 - Hole 1 - 15 - 17.6
- S. 8 Box No. 2 - Hole 1 - 51 - 54
- S. 9 Box No. 4 - Hole 1 - 81 - 84
- S. 10 Box No. 4 - Hole 1 - 84 - 86
- S. 11 Box No. 5 - Hole 1 - 113.6 - 116.6
- S. 12 Box No. 5 - Hole 1 - 116.6 - 120

- S. 13 Box No. 4 - Hole 2 - 115 - 121
- S. 14 Box No. 5 - Hole 2 - 135 - 138
- S. 15 Box No. 4 - Hole 2 - 122.6 - 125
- S. 16 Box No. 4 - Hole 2 - 125 - 129

Hole No. - 1 at 65 Degrees -
 Hole No. - 2 at 50 Degrees -

Hole 1 - 29-1/3 inches = 1 ft.
 Hole 2 - 19-1/5 inches = 1 ft.

Hole 2 - 157 ft. across surface
 Hole 1 - 72 ft. across surface

Hole 1 - 159 vertical depth
 Hole 2 - 184 vertical depth

Haileybury, Ont...December 7th.....1945

HAILEYBURY ASSAY OFFICES

Certificate of Analysis

No. 32266

We have assayedthree.....samples of2 D.D. Core; 1 Rock.....

ReceivedDecember 6th.....and submitted byAndowan Gold Mines.....

.....with the following results:

	<u>Sample #</u>	<u>oz. gold ton.</u>	
D. D. Core.	1-B.M.F.	.26)) Group 11.
	2-B.M.F.	5.96)	
Rock.	3	25.95 oz. silver ton.	(Hemlo)

J. W. N. Bell
.....Assayer.

Haileybury, Ont. July 9th1945

HAILEYBURY ASSAY OFFICES

Certificate of Analysis

No. 15841

We have assayedseven.....samples of 2 D.D.Core; 5 Rock
Received..... July 9th,and submitted by C. E. Anderson,
..... Port Arthur, Ontario.with the following results:

(No. 3 Hole on North Side)

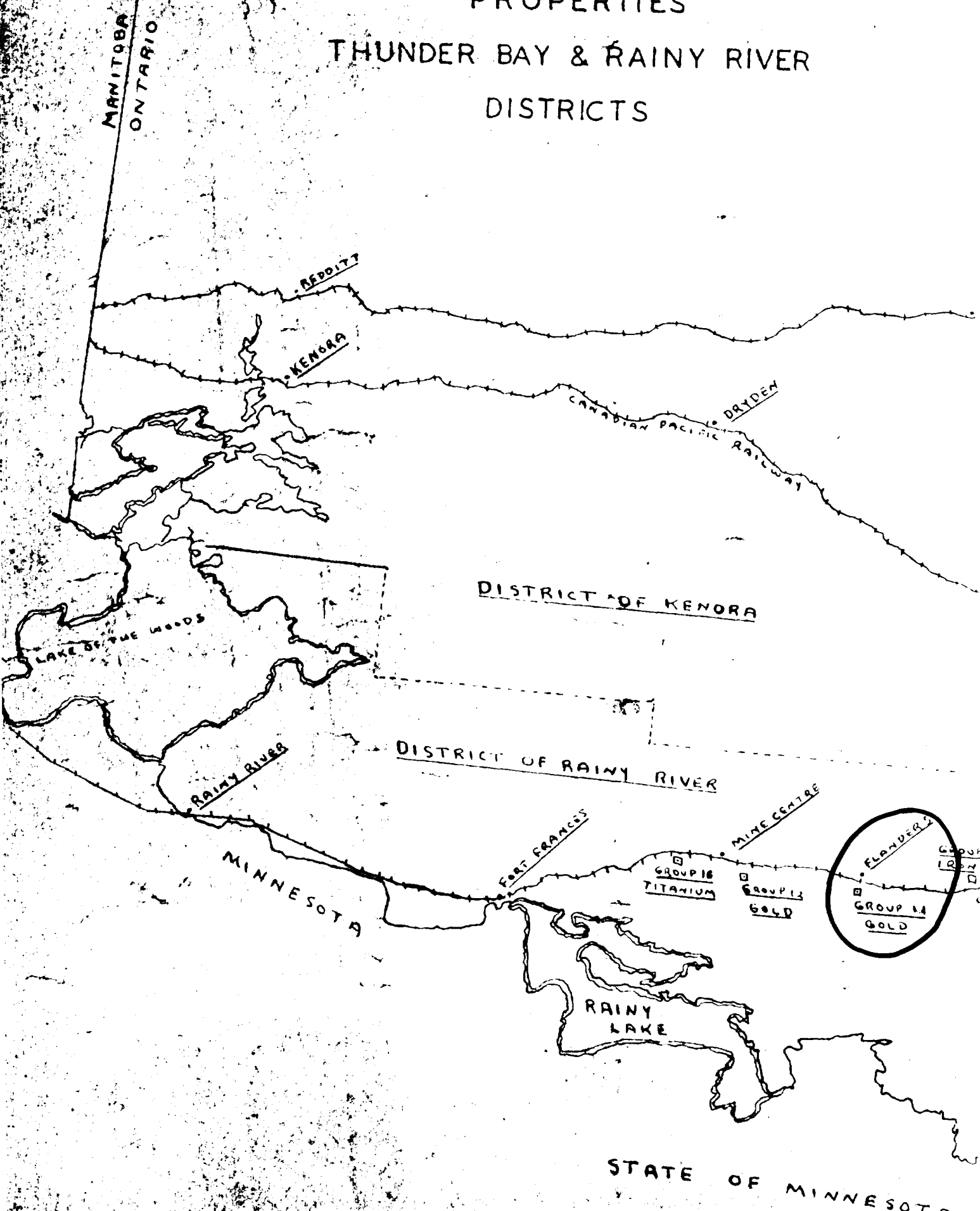
	<u>Sample #.</u>	<u>oz. gold ton.</u>
D. D. Core	1 (Olcott)	Trace
	2 (Olcott)	.01
Rock.	1 (Mayflower)	1.51
	2 (Olcott)	.02
	3 (Mayflower)	1.38
	4 (Olcott)	Trace
	5 (Olcott)	Trace

J.W.N.BellAsst

I
MAP SHOWING LOCATION OF

ANDOWAN MINES LIMITED

PROPERTIES
THUNDER BAY & RAINY RIVER
DISTRICTS



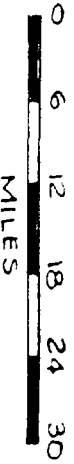
Map showing location of

ANDOWAN MINES LIMITED

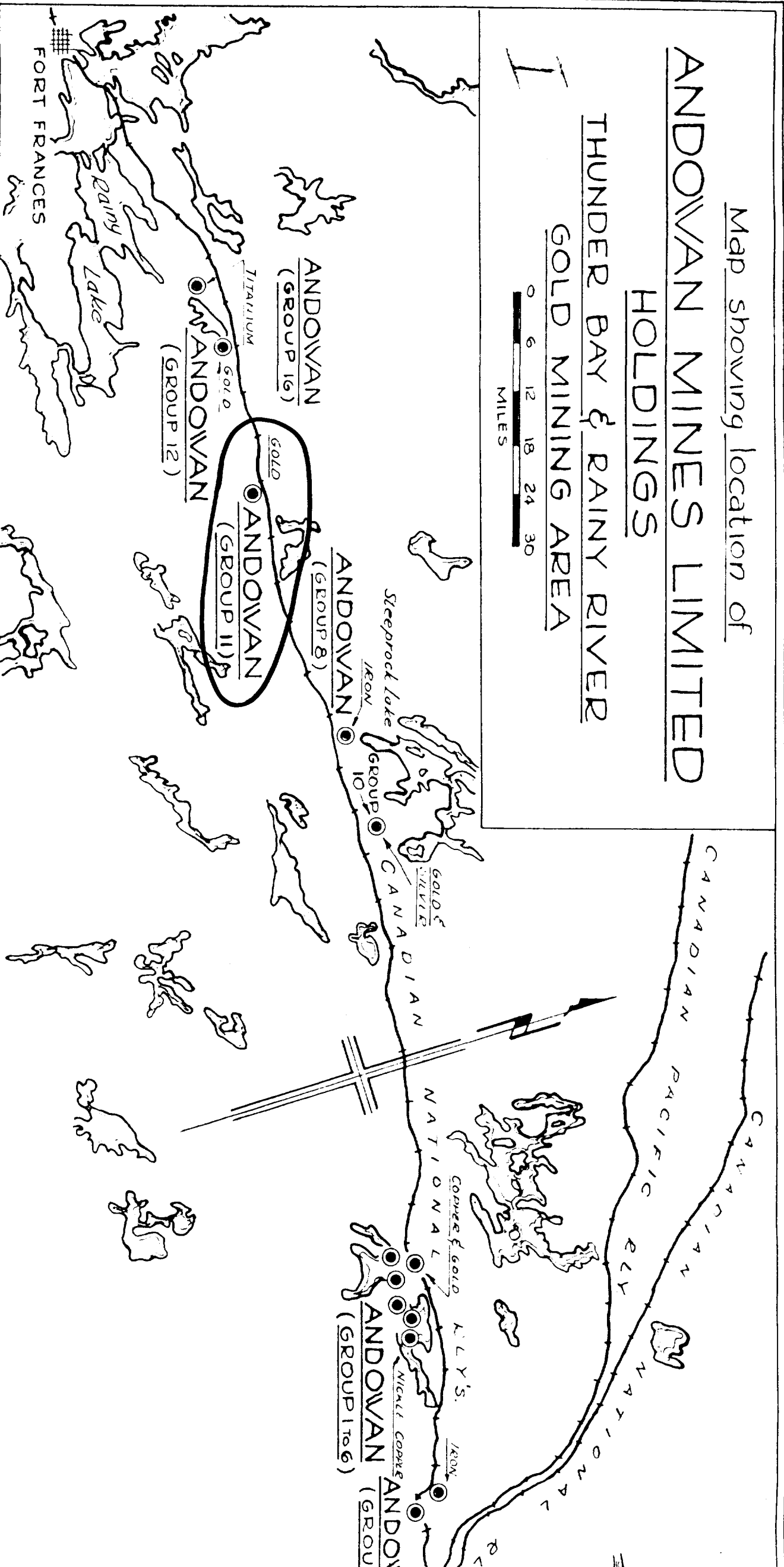
HOLDINGS

THUNDER BAY & RAINY RIVER

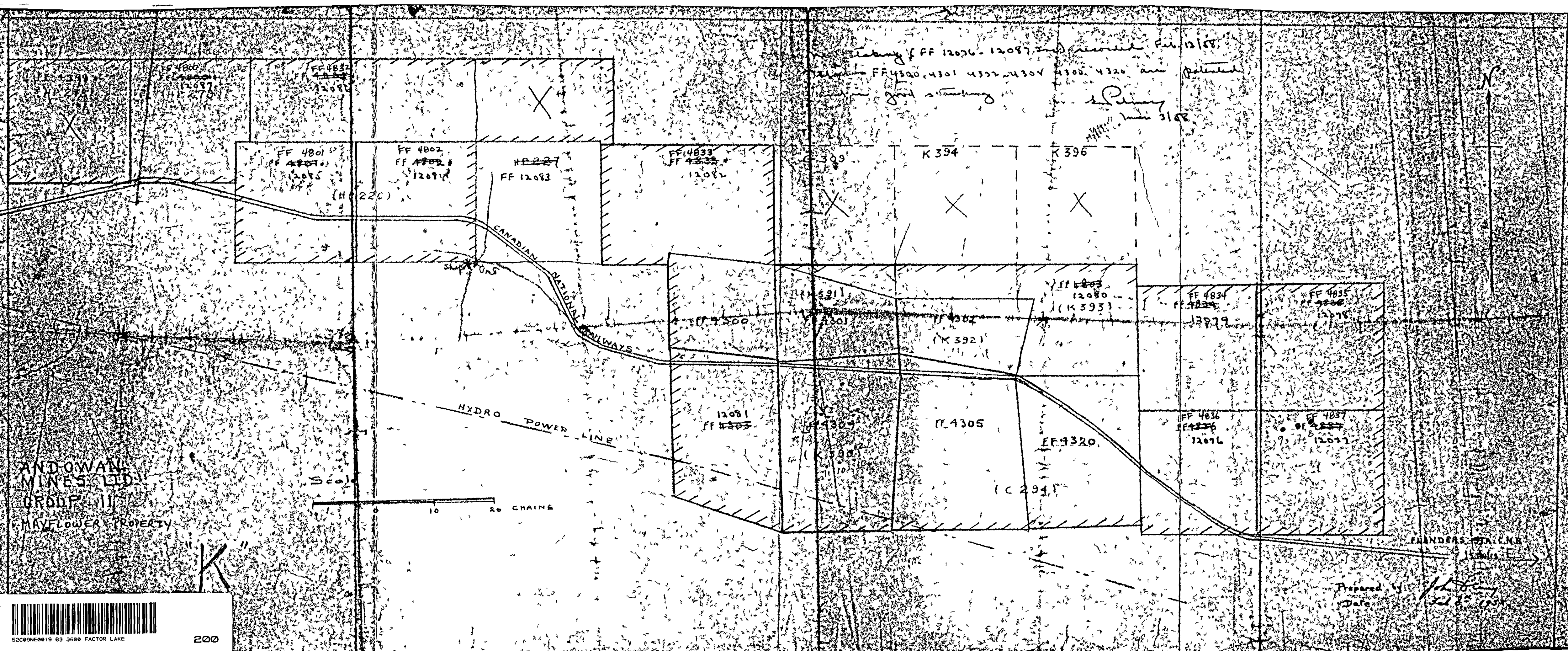
GOLD MINING AREA



MILES



Listing of FF 12076-12087, and recorded Feb. 12/58.
 FF 4300, 4301, 4302, 4304, 4306, 4320 are patented
 good standing in the name of Peabody
 since 3/1/58



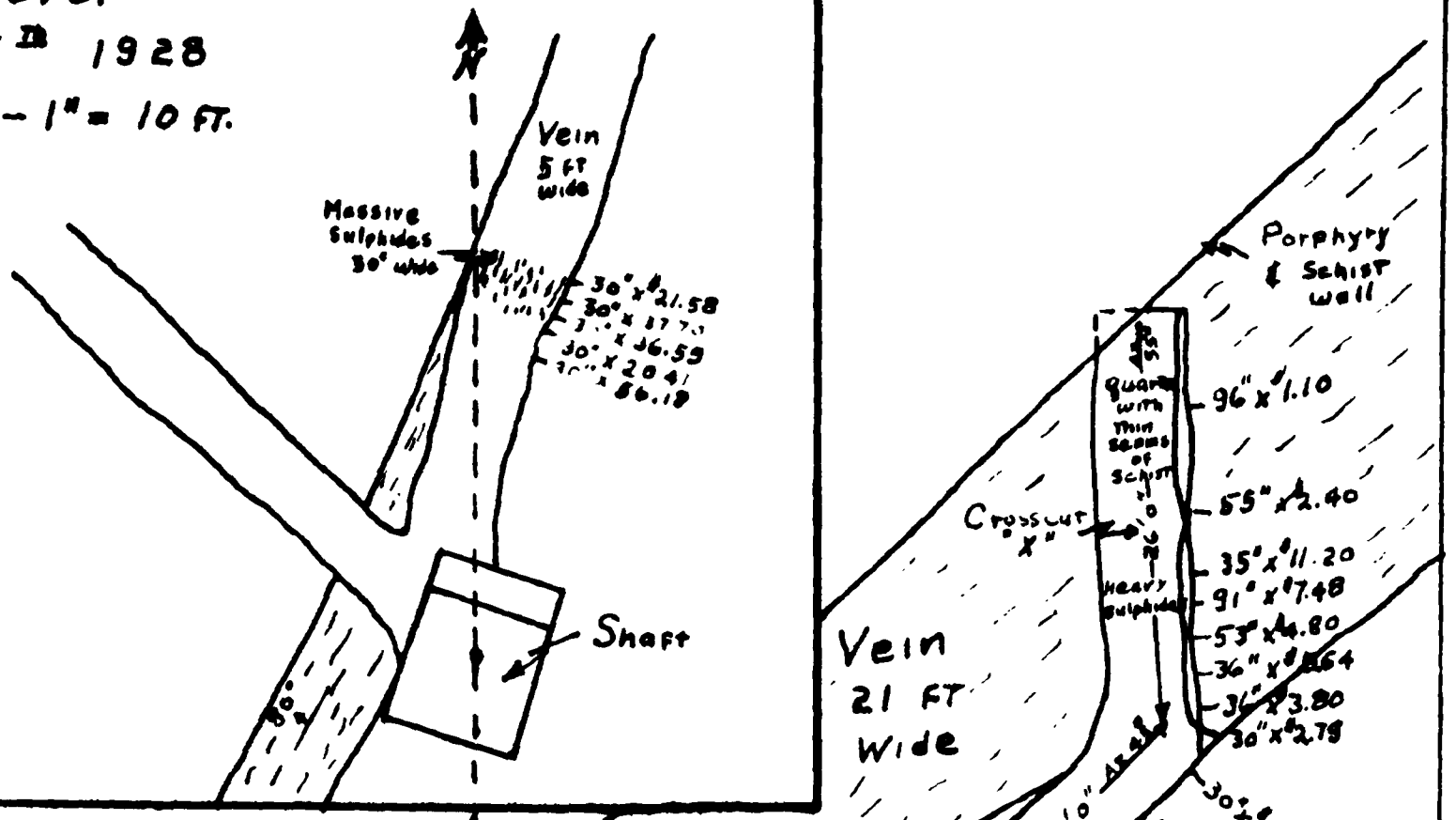
ANDOWAN
 MINES LTD.
 GROUP II
 MAYFLOWER PROPERTY

FLANDERS STATION

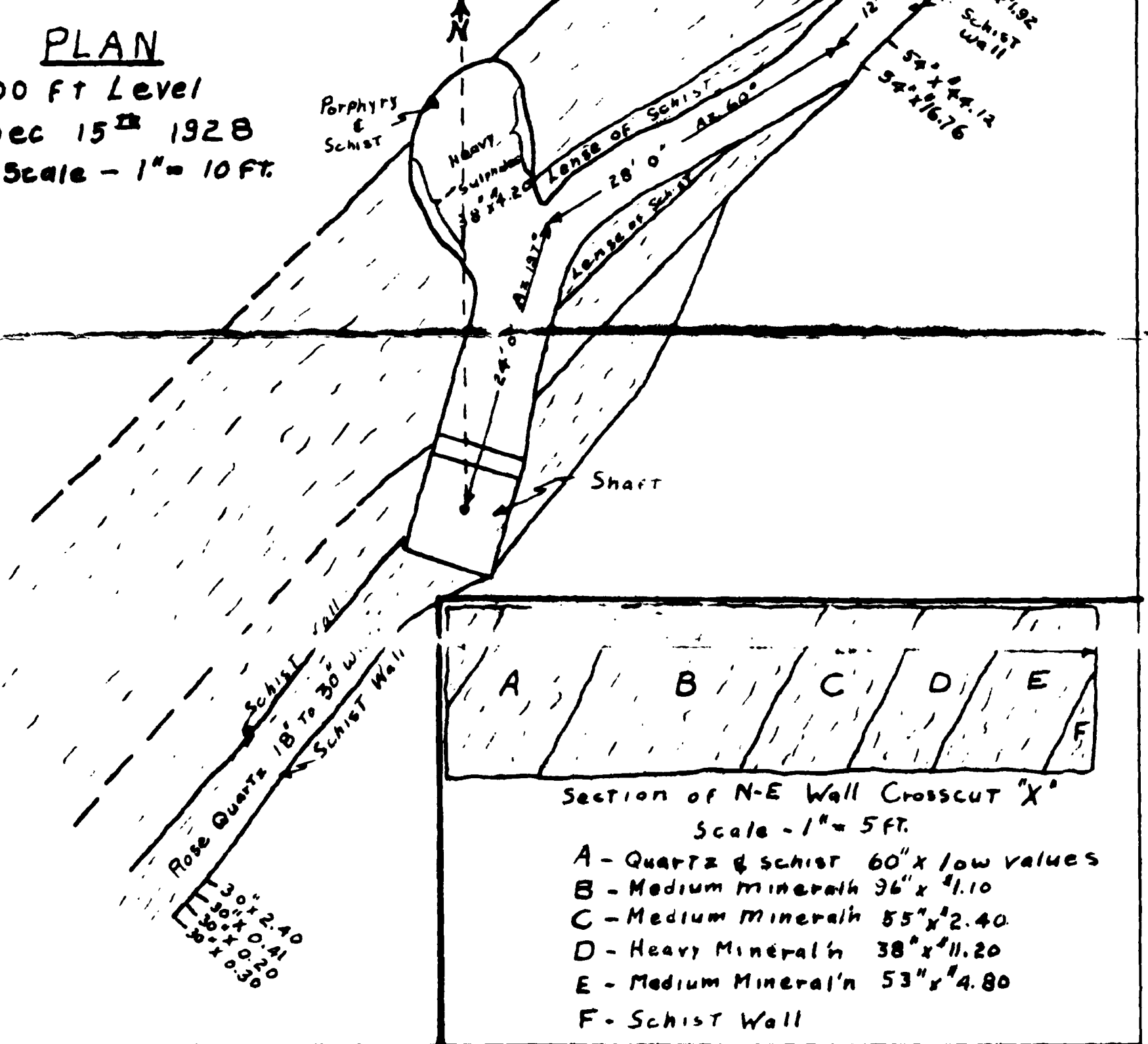
Prepared by *Peabody*
 Date *2/12/58*



PLAN
 50-FT Level
 Dec. 15th 1928
 Scale - 1" = 10 FT.



PLAN
 100 FT Level
 Dec 15th 1928
 Scale - 1" = 10 FT.



Section of N-E Wall Crosscut "X"
 Scale - 1" = 5 FT.

A	B	C	D	E	F
---	---	---	---	---	---

A - Quartz & schist 60" x low values
 B - Medium mineral 96" x 1.10
 C - Medium mineral 55" x 2.40
 D - Heavy mineral 38" x 11.20
 E - Medium mineral 53" x 4.80
 F - Schist Wall

Underground Working
Mayflower Mine
 as of Dec 15th, 1928

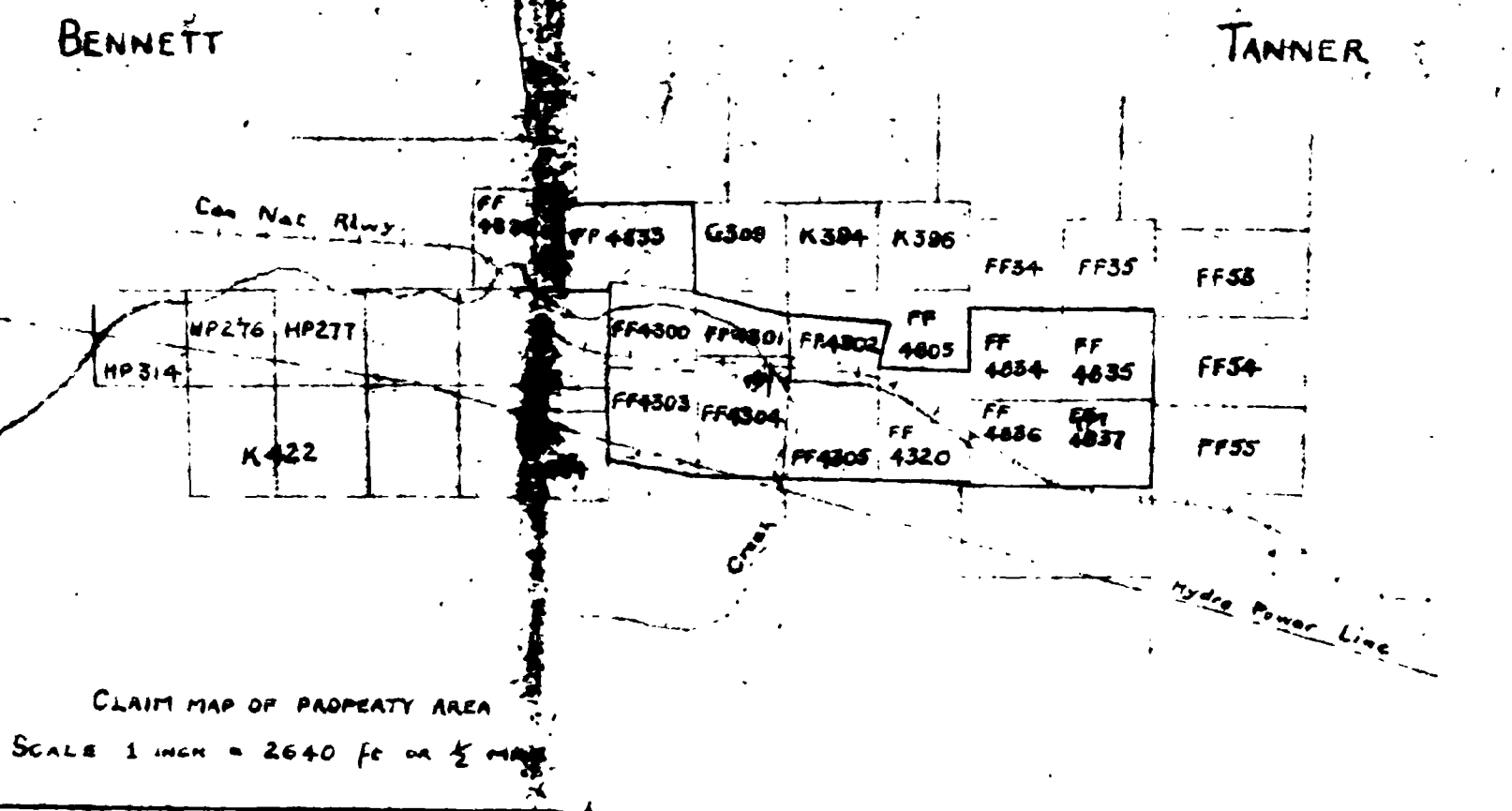


MAYFLOWER GOLD MINES LIMITED
 Fort William Ont.

A

FREEPORT EXPLORATION COMPANY
TORONTO ONTARIO

PLAN OF MAYFLOWER - FLANDERS PROPERTY
SCALE 1 INCH = 50 FEET
DRAWN July 29/46 R.G.C. REVISED Nov 15/46
LEGEND



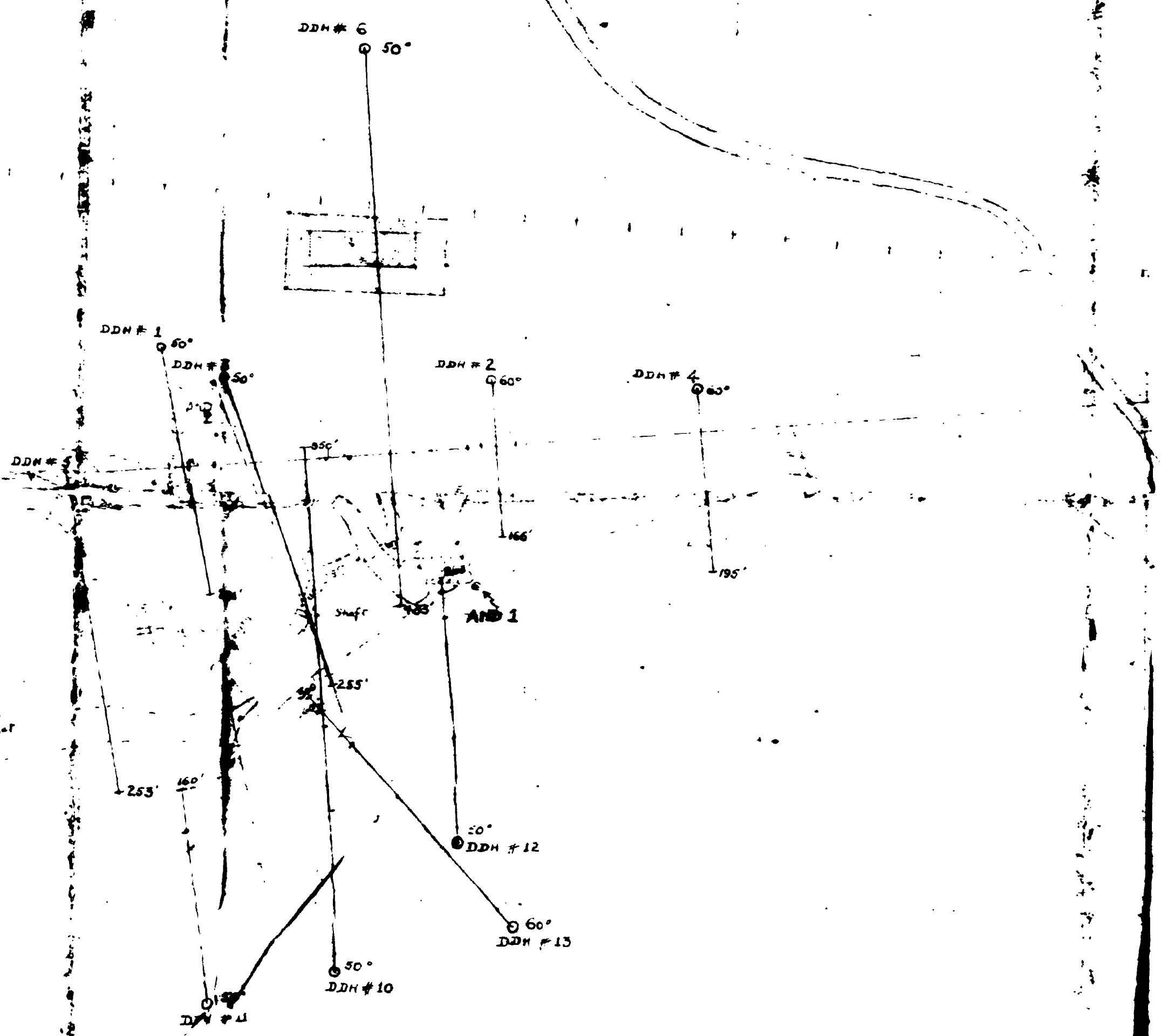
CLAIM MAP OF PROPERTY AREA
SCALE 1 INCH = 2640 FEET OR 1/2 MILE

FF4301

FF4300

CANADIAN NATIONAL RAILWAY

FF4303

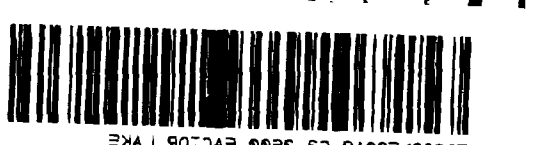


Flanders 1/2 mi E

FF4305

FF4304

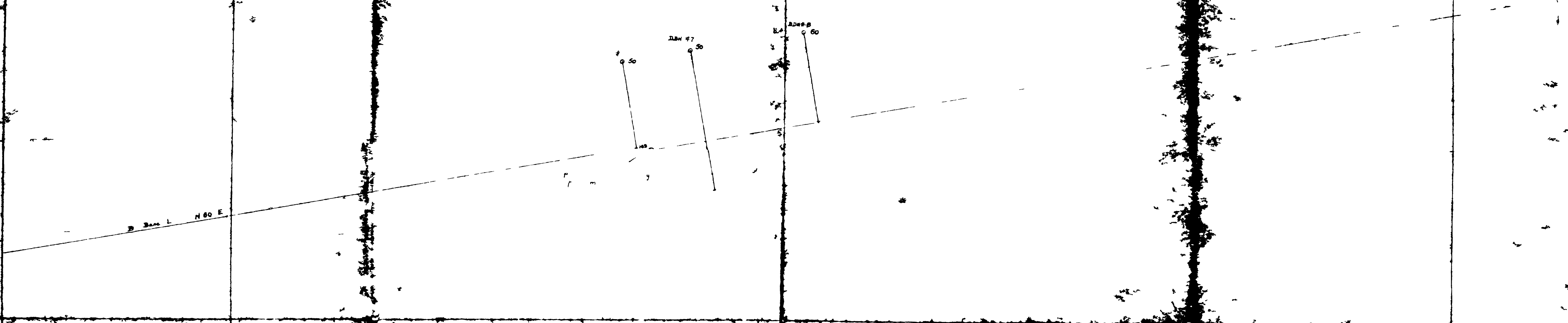
Power Line
500' Scale



OSS

FF4834

FF4835



FF4836

FF4837

FREEMONT EXPLORATION COMPANY
 TORONTO ONTARIO

PLAN OF CONVEYANCE PROPERTY FLANDERS, Ont

SCALE 1 INCH = 50 FEET

DRAWN BY 26/16 J.G.C.

LEGEND

DES

