



52C10NE0497 17 BAD VERMILION LAKE

010

# Diamond Drilling

Area of BAD VERMILLION LAKE

Report NO 17

Work performed by: Jack Hodge

Claim NO	Hole NO	Footage	Date	Note
K 475004	59	302.0'	May/77	(1)
K 475004	60	416.0'	June/77	(1)
K 475004	61	404.0'	June/77	(1)

3 DDH

1122'

## Notes:

(1) #23-78

AREA OF M-2474

# GRASSY LAKE

#23-78

JACK HODGE

DISTRICT OF  
RAINY RIVER

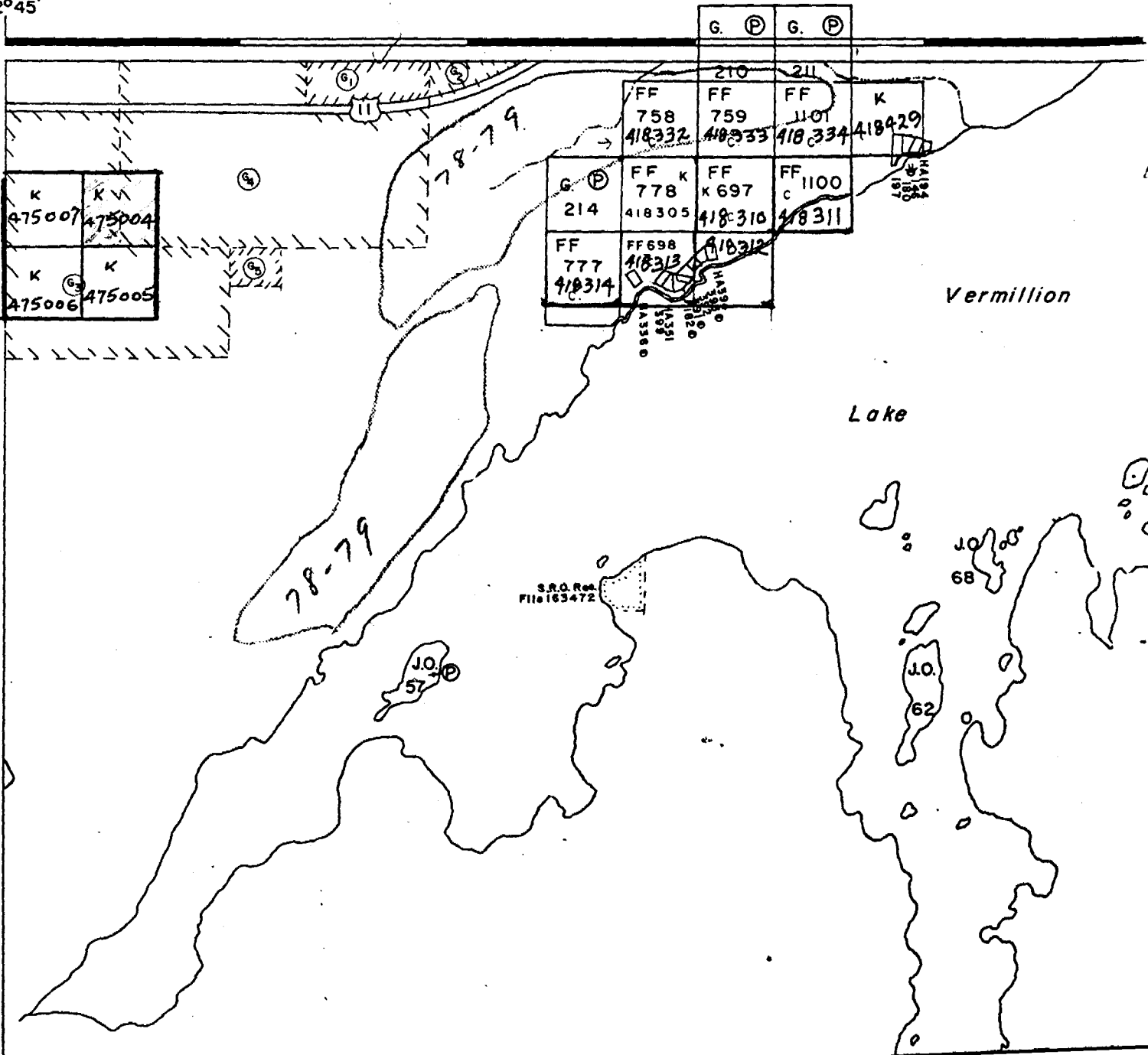
KENORA  
MINING DIVISION

SCALE: 1-INCH = 40 CHAINS

## LEGEND

- |                       |               |
|-----------------------|---------------|
| PATENTED LAND         | Ⓟ             |
| CROWN LAND SALE       | C.S.          |
| LEASES                | Ⓛ             |
| LOCATED LAND          | Loc.          |
| LICENSE OF OCCUPATION | L.O.          |
| MINING RIGHTS ONLY    | M.R.O.        |
| SURFACE RIGHTS ONLY   | S.R.O.        |
| ROADS                 |               |
| IMPROVED ROADS        | ====          |
| KING'S HIGHWAYS       | ====<br> <br> |
| RAILWAYS              | ====<br> <br> |
| POWER LINES           | ====          |
| MARSH OR MUSKEG       | ⊛             |
| MINES                 | ●             |
| CANCELLED             | Ⓧ             |
| PATENTED S.R.O.       | Ⓞ             |

92°45'



397



Diamond Drilling Log

Fill in on every page

Drilling Company <b>George Armstrong Co. Limited</b>		Collar Elevation	Bearing of hole from true North <b>150°SE</b>	Total Footage <b>302'</b>	Dip of Hole at Collar <b>45°</b>	Location of hole in relation to a fixed point on the claim.  <i>200' 0054</i>	Map Reference No. <b>2474</b>	Claim No. <b>475004</b>
Date Hole Started <b>May 26/77</b>	Date Completed <b>June 4/77</b>	Date Logged <b>Apr 26/78</b>	Logged by <b>Mike Hupchuk</b>		Ft.		Location (Twp., Lot, Con. or Lat. and Long.) <b>Grassy Lake Area Mine Centre, Ontario</b>	
Exploration Co., Owner or Optionee <b>Jack Hodge R.R. 1 DEVLIN, Ontario</b>		Date Submitted <b>May 3/78</b>	Submitted by (Signature) <i>Mike Hupchuk</i>		Ft.		Property Name <b>Jack Hodge</b>	
					Ft.			

Footage		Rock Type	Description <small>Colour, grain size, texture, minerals, alteration, etc.</small>	Planar Feature Angle *	Core Specimen Footage †	Your Sample No.	Sample Footage		Sample Length	Assays †	
From	To						From	To			
0	56	Overburden	Casing								
56	85	Hornblende Gabbro	Fine to medium grained								
85	100	Rhyolite	Very homogeonous glassy carbonated minor sul		Split	Core	85	100		Gold & Silver	
100	108	Andesite	Medium grained								
108	160	Anorthositic Gabbro	Light in color blochy								
160	170	Andesite	Fine grained sheared								
170	173	Andesite	Banded mineralized zone 75° to core cuzn 20%				170	173		Gold & Silver	
173	177	Lapilli tuff	1/16 to 1/4" fragments							cu zn	
177	178	Massive sul	mostly fine grained pyrites minor copper								
178	187	Lapilli tuff	Fragments 1/4 to 1/2" tuff fine grained dark in color								
187	302	Andesite	Fine grained some fragments								
			302' - End of Hole								

JACK HOOVER LIO NO-H-7626

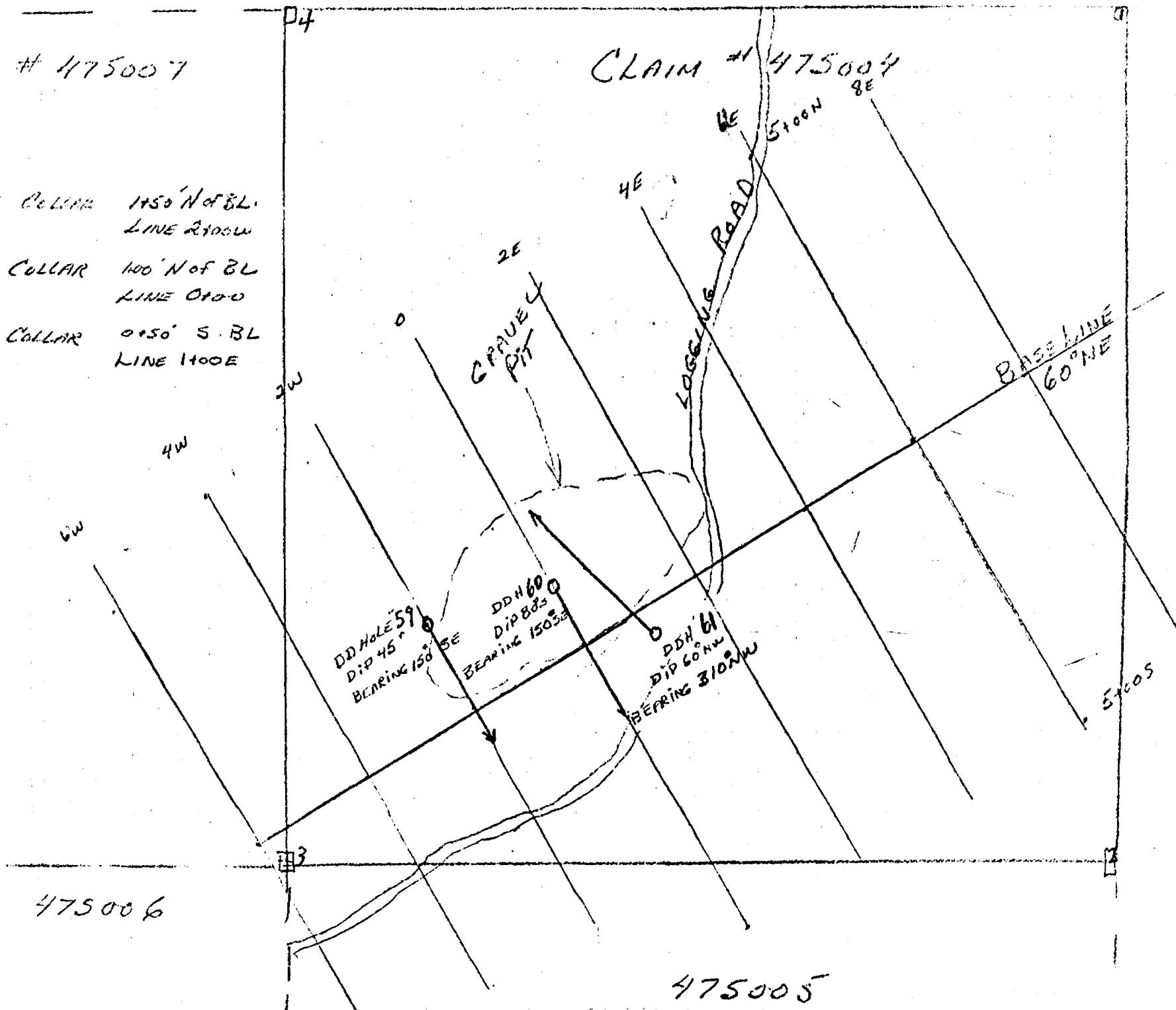
CLAIM # 475007

CLAIM # 475007

DDH #1 COLLAR 1450' N of BL  
LINE 2100W

DDH #1 COLLAR 100' N of BL  
LINE 0100

DDH #3 COLLAR 0+50' S BL  
LINE 1100E





**Diamond  
Drilling  
Log**

Fill in on  
every page

Drilling Company <b>George Armstrong Co. Limited</b>		Collar Elevation	Bearing of hole from true North <b>150°SE</b>	Total Footage <b>416'</b>	Dip of Hole at Collar <b>80°SE</b>	Location of hole in relation to a fixed point on the claim.  <i>370' 00060</i>	Map Reference No. <b>2474</b>	Claim No. <b>475004</b>
Date Hole Started <b>June 7/77</b>	Date Completed <b>June 16/77</b>	Date Logged <b>Apr 16/78</b>	Logged by <b>Mike Hupchuk</b>		Ft.		Location (Twp., Lot, Con. or Lat. and Long.) <b>Grassy Lake Area Mine Centre, Ontario</b>	
Exploration Co., Owner or Optionee <b>Jack Hodge R.R. 1, DEVLIN, Ontario</b>		Date Submitted <b>May 3/78</b>	Submitted by (Signature) <i>Mike Hupchuk</i>		Ft.			
					Ft.			Property Name <b>Jack Hodge</b>

Footage		Rock Type	Description <small>Colour, grain size, texture, minerals, alteration, etc.</small>	Planar Feature Angle *	Core Specimen Footage †	Your Sample No.	Sample Footage		Sample Length	Assays †	
From	To						From	To			
0	35	Overburden	Casing								
35	95	Hornblende Gabbro	Meduim to coarse grain								
95	155	Rhyolite	Very homogeonous glassy carbonated minor chlorite								
155	164	Rhyolite	Mostly Quartz carbonated				155	164			Gold & Silver
164	180	Lapilli tuff	Chloritized with Blue Quartz eyes medium grained								
180	191	Lapilli tuff	1/4 to 1/2" fragments carbonated stringer down dip								
191	250	Andesite	Fine to meduim grained chloritized								
250	280	Lapilli tuff	Light in color 1/4 to 1/2" fragments								
280	297	Massive sul	50% to 60% massive sul mostly pyrite and pyrro minor chalco and phalerite 75° to core		Split	core	280	297			
297	337	Andesite	Fine to meduim grained bands of carbonates								
337	343	Sul 30%	Mostly pyrites and pyrro minor chalco phalerite 75° to core		Split	core	337	343			
343	350	Dike	Very fine grained basic and dark in color								
350	416	Lapilli tuff	1/16 to 1/2" fragments dark in color								
			416' - End of Hole								

JACK HOOGE L10 NO-H-9626

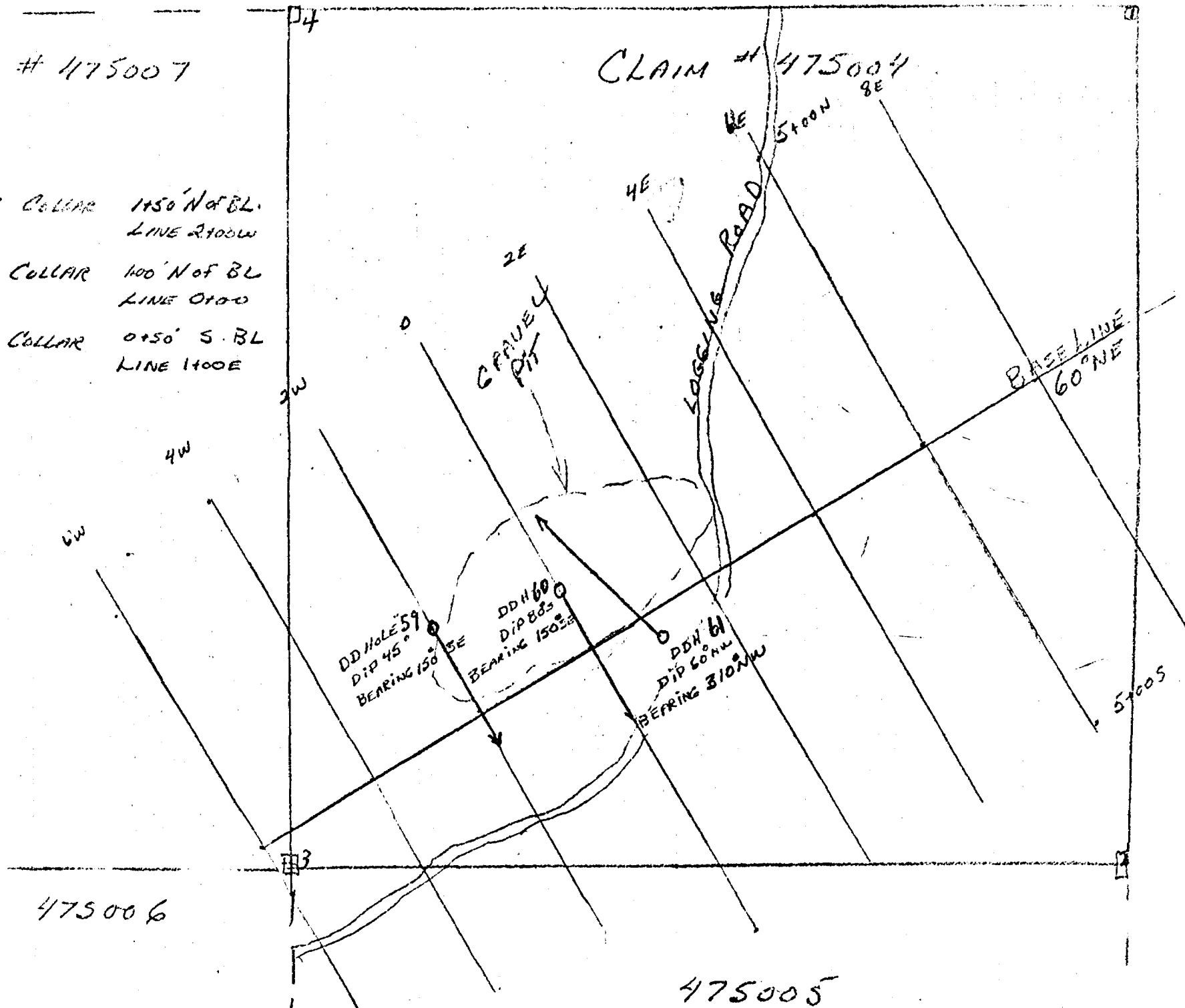
CLAIM # 475007

CLAIM # 475004

DDH #1 COLLAR 1450' N of BL.  
LINE 2100W

DDH #1 COLLAR 100' N of BL  
LINE 0100

DDH #3 COLLAR 0+50' S. BL  
LINE 1400E



475006

475005



Diamond Drilling Log

Fill in on every page

Drilling Company George Armstrong Co. Limited		Collar Elevation	Bearing of hole from true North 310° NW	Total Footage 404'	Dip of Hole at Collar 60° NW	Location of hole in relation to a fixed point on the claim.  380' 470' 2006'	Map Reference No. 2474	Claim No. 475004	
Date Hole Started June 18/77	Date Completed June 28/77	Date Logged Apr 16/78	Logged by Mike Hupchuk		Ft.		Location (Twp., Lot, Con. or Lat. and Long.) Grassy Lake Area Mine Centre, Ontario		
Exploration Co., Owner or Optionee Jack Hodge R.R. 1 DEVLIN, Ontario		Date Submitted May 3/78	Submitted by (Signature) <i>Mike Hupchuk</i>		Ft.				
					Ft.				

Footage		Rock Type	Description Colour, grain size, texture, minerals, alteration, etc.	Planar Feature Angle *	Core Specimen Footage †	Your Sample No.	Sample Footage		Sample Length	Assays †	
From	To						From	To			
0	26	Overburden	Casing								
26	176	Lapilli tuff	1/16 to 1/4" fragments carbonated banding 60° to core								
176	177	Chlorite schist	65° to core								
177	180	Massive sul	60 to 75% pyrite pyrro chalco minor phalerite		Split	core	177	180			
180	224	Rhyolite	Homogenous dark in color minor chlorite								
224	245	Lapilli tuff	1/16 to 1/4" fragments								
245	250	Anorthositic Gabbro									
250	280	Rhyolite tuff	Glassy light in color some chlorite								
280	404	Hornblende Gabbro	Fine to medium grained some carbonation bands								
			404' - End of Hole								

JACK HOOGE LIC NO-H-7626

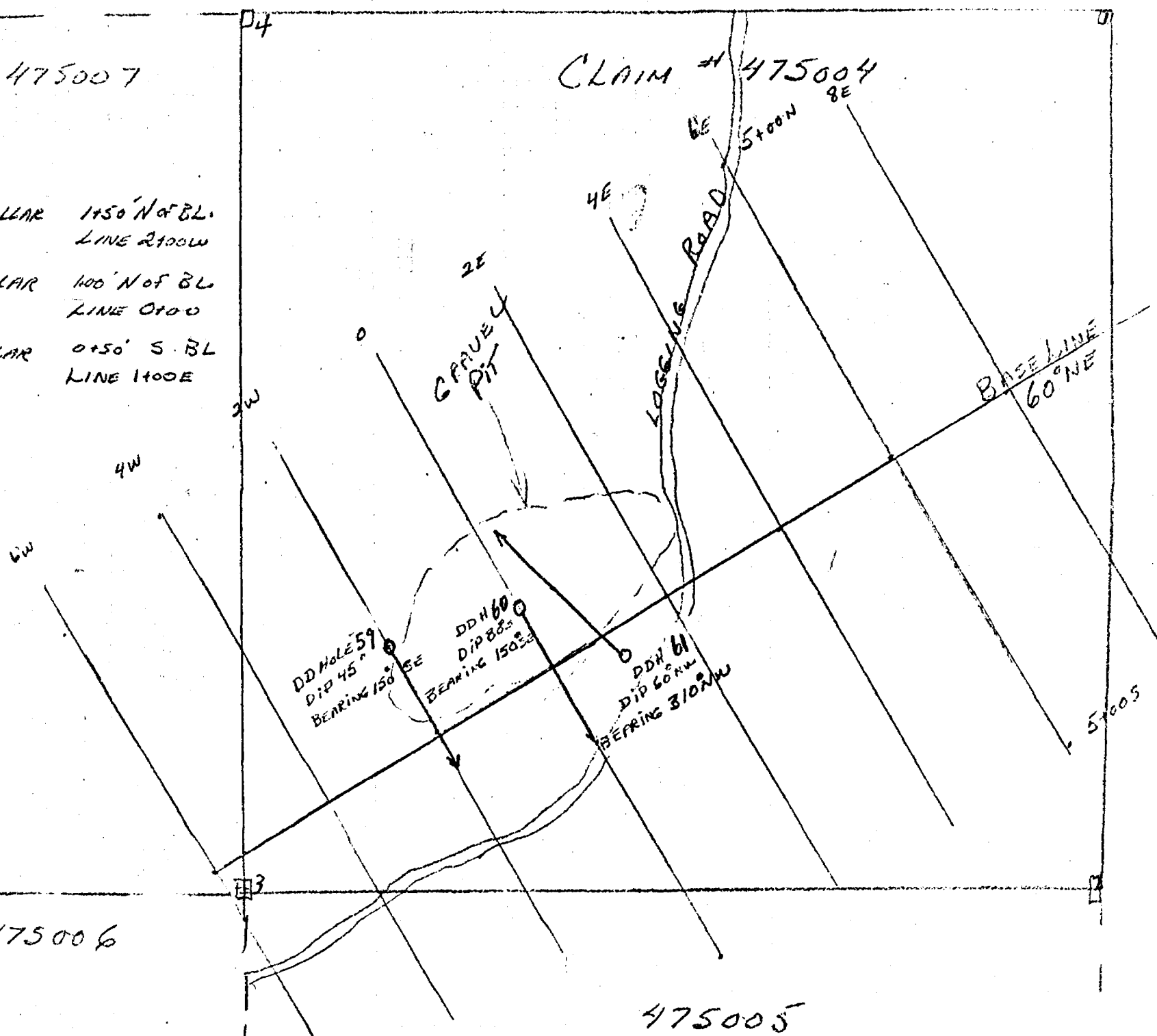
CLAIM # 475007

CLAIM # 475004

DDH #1 COLLAR 1450' N of BL.  
LINE 2100W

DDH #1 COLLAR 100' N of BL  
LINE 0100

DDH #3 COLLAR 0+50' S BL  
LINE 1400E



475006

475005