



52E10NW9457 10 ECHO BAY

010

Diamond Drilling

Area Echo Bay & BOYS TWP.

Report N^o 10

Work performed by: T.B. Lock, SELCO

Claim N ^o	Hole N ^o	Footage	Date	Note
K 37842	1	254'	Feb/66	

Notes:

DIAMOND DRILL RECORD

HOLE NO. 1
SHEET NO 2
LOCATION

PROPERTY 1965-16

BEARING
DIP COLLAR

ELEVATION
TOTAL DEPTH
CORE SIZE

STARTED

COMPLETED

FROM	TO	DESCRIPTION	SAMPLE NO.	FROM	TO	CORE LENGTH	CORE RECOVERED	ASSAYS				REMARKS	
								Au.oz	Ag.oz	Zn.%	Cu.%		
106.5	128.0	TUFF: dacitic - light to darkish grey well banded, fine grained. Occasional bands quartz. Fractures at 5 - 15° to core length. Py. Po. as sporadic dissemination, as smears (Py.) and occasionally associated with quartz veins. Occasional Py. bands to 1/8" wide with sporadic crystals chalcopyrite.										The chalcopyrite appears to be associated with remobilized or injected pyrite in this & other sections.	
128.0	143.9	ARGILLITE: as 80.5 - 84.6 becomes cherty towards end of section Po. Py. est. 1 - 2%. Pyrite also occurs as occasional bands (veins?) to 1/8" containing sporadic chalcopyrite crystals.	1111	129.0	132.0	3.0'	3.0'	N11			0.01		Siliceous. Quartz carb. with py. veins, est. Py. 2% Po. 1%.
143.9	150.3	ANDESITE: Greyish green medium to fine grained. Well foliated. Biotite conspicuous locally.											
150.3	153.6	TUFF: light grey fine grained with narrow interbanded argillaceous material.											
153.6	208.5	GRAPHITIC ARGILLITE: dark grey black slaty, well banded to very contorted with minor fracturing and faulting and local brecciation. Quartz carbonate present throughout as elongate eyes and bands concordant with foliation and as fresh veins ranging up to 1/4" wide also fracture fillings. Pyrite and minor pyrrhotite occur in these veins at times also sporadic chalcopyrite crystals. Po. (Py. minor) occur occasionally as thin smears on foliation planes at times ranging up to 5 - 20% locally. Sulphides also occur associated with quartz carbonate bands and eyes. Py. locally to 15% Po. 5 - 20% overall 1/2 - 5% combined.	1112 1113 1114	153.6 156.1 167.0	156.1 158.1 169.0	2.5' 2.0' 2.0'	2.5' 2.0' 2.0'	N11 N11 N11		Tr. N11	Tr. 0.05	N11	Py. 2% Po. 1% Py. 1% quartz filled breccia zone (?) Po. 10% as thin laminae Py. 1% From 164' to the end of the section the graphite content is up to 1 - 2% with considerable contortion in the argillite. 166.8 - 183.0 2 - 7% quartz carbonate locally up to 20%. Po. Py. 3%
		183.0' angular quartz filled breccia zone 1" wide. 200.5-201.3 Pegmatite vein and brecciation.	1115	200	202	2.0	2.0	N11					

RECEIVED
 KENORA
 NOV 17 1966
 RECEIPT NO. 111111

DIAMOND DRILL RECORD

HOLE NO. 1
 SHEET NO 3
 LOCATION

PROPERTY 1965 - 16

BEARING
 DIP COLLAR

ELEVATION
 TOTAL DEPTH
 CORE SIZE

STARTED

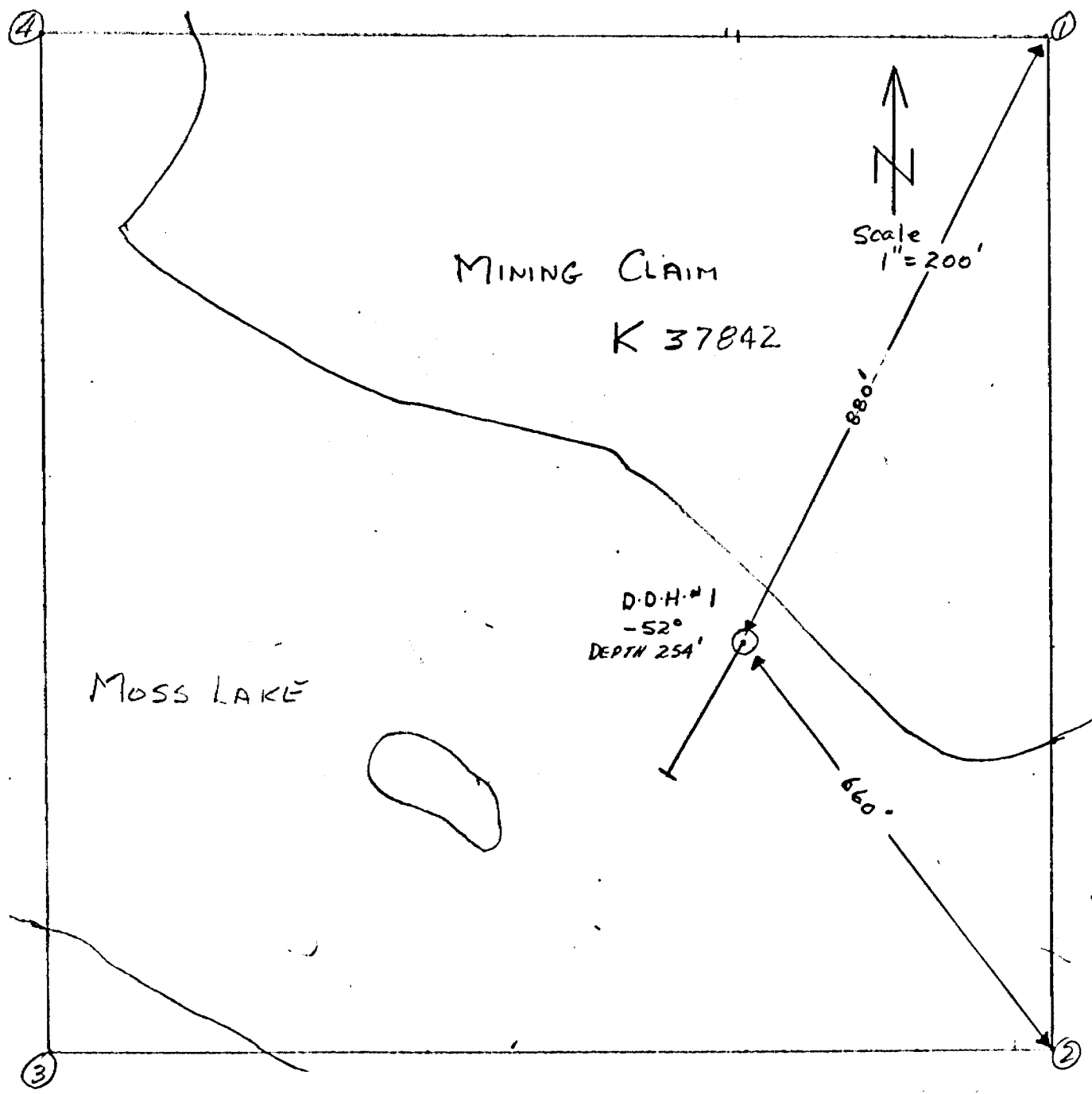
COMPLETED

FROM	TO	DESCRIPTION	SAMPLE NO.	FROM	TO	CORE LENGTH	CORE RECOVERED	ASSAYS				REMARKS
208.5	254.0	<p>ANDESITE: Greenish grey fine to medium grained weakly foliated to massive. Occasional quartz veining. Minor dissemination of pyrite pyrrhotite $\frac{1}{2}$ to 223.0' becoming very sporadic towards end of hole. 210.5 - 212.0 local drag folding 223.0 to end of hole massive medium grained becoming gabbroic.</p> <p>END OF HOLE.</p>										

KENORA
 REC'D NOV 17 1966
 RECEIPT No.
 MINING DIVISION

DRILLED BY _____

SIGNED _____



MINING CLAIM
K 37842

MOSS LAKE

D.O.H. #1
-52°
DEPTH 254'

Scale
1" = 200'

RECORD
NOV 17 1966
REGISTER NO.

*Forgie
Tramp*