



52E10SW8519 32 SHOAL LAKE

010

Diamond Drilling

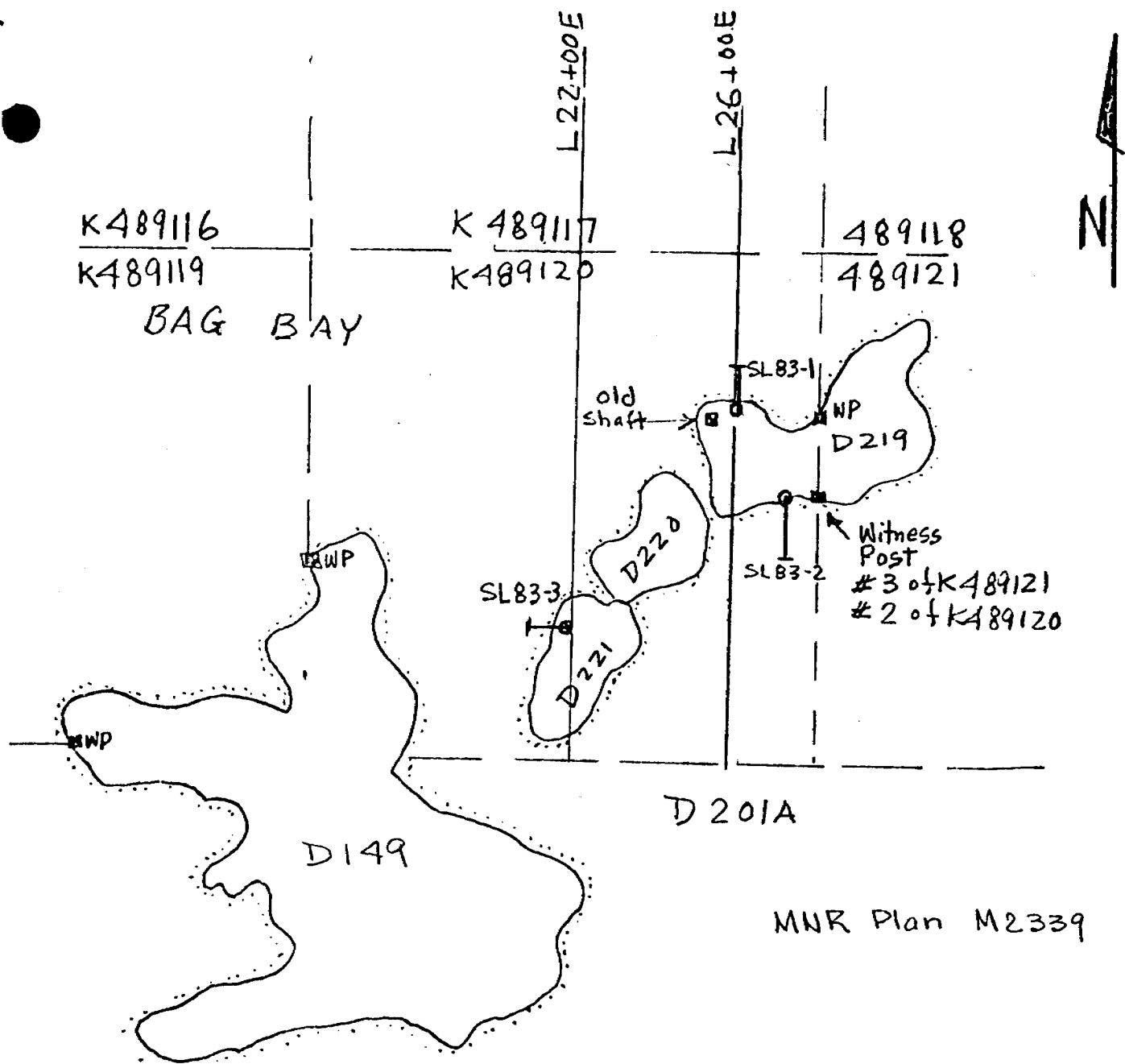
Area Shoal Lake

Report NO 32

Work performed by: Harold George Tibbo

Claim NO	Hole NO	Footage	Date	Note
K 489120	1	344.4	June/83	(1)
	2	344.4	June/83	(1)
	3	344.4	June/83	(1)

Notes: (1) #83-83



*h.g. tibbo*

Hole No.	Location	Length	Azimuth	Dip
SL83-1	2600 E 1475 S	350 ft.	360°	-45°
SL83-2	2800 E 1645 S	350 ft.	180°	-45°
SL83-3	2150 E 2125 S	350 ft.	270°	-60°

Tasu Resources Ltd.  
 Diamond Drill Hole Location Plan  
 Bag Bay, Shoal Lake, Glass Twp.  
 Kenora Mining Division  
 June 17-27, 1983  
 Scale 1 inch = 400 feet. h.g. tibbo

Diamond Drill Hole No. One  
Shoal Lake Project, Glass Twp.  
Kenora Mining Division

Location: Claim K489120, Island D219, Glass Township  
Line 2600 East, 1475 South

Dates: Started June 17, 1983, finished June 20, 1983

Hole Length: 105 metres. Core Size: BQ, 1 1/8 inch, sludge samples collected each 3 metres.

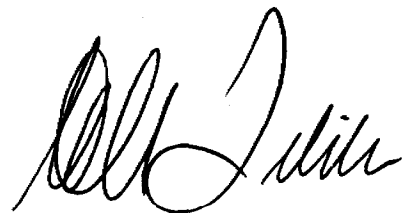
Hole Azimuth: 360 degrees.

Hole Inclination: -45 degrees, HF test at 105 metre.

Core logged and sampled by H. G. Tibbo

Core and sludge stored on the property of Mr. R. Eastwood, Clearwater Bay.

<u>Metres</u>		<u>Description</u>	<u>Sample No.</u>	<u>Au</u>	
<u>from</u>	<u>to</u>			<u>from</u>	<u>to</u>
0	3.5	casing. no core			
3.5	9.0	altered quartz diorite. grey qtz. hornblende altered to chlorite. occassional hematite staining of white feldspar. no pyrite. slightly magnetic.			
9.0	9.4	same as above but with minor epidote. not magnetic. end of Box No. 1			
9.4	10.8	altered quartz diorite, salmon pink feldspar. nonmagnetic, no pyrite.			
10.8	15.3	intense silicification. grey-blue cryptocrystalline quartz & greenish amorphous feldspar. 0.5 to 1% pyrite, very fine grained. nonmagnetic. pyrite in sections @ 9.4 & 10.8 m. fracture zone @ 14.5m. end of Box No. 2			
15.3	17.8	altered quartz diorite. salmon pink feldspar, chlorite, grey qtz. slightly magnetic, no pyrite. chlorite grains 2-3mm.			
17.8	19.0	intense silicification. grey quartz & greenish feldspar. 0.5% pyrite, nonmagnetic.			
19.0	21.3	altered quartz diorite. white feldspar, chlorite, grey quartz w/minor epidote. slightly magnetic. end of Box No. 3			



Diamond Drill Hole No. One  
Shoal Lake Project, Glass Twp.  
Kenora Mining Division

<u>Metres</u>		<u>Description</u>	<u>Sample</u> <u>No.</u>	<u>Au</u>	
<u>from</u>	<u>to</u>			<u>from</u>	<u>to oz/s.t.</u>
21.3	27.2	altered quartz diorite, medium grained (2-4mm.), white to pink feldspar, chlorite & occasional epidote. very weakly magnetic. 10 cm. patches of silicification carrying 1-2% pyrite, otherwise no metallic mineralisation. end of box no. 4			
27.2	33.1	altered quartz diorite. feldspar is white w/pink centres, grey quartz, nonmagnetic, no pyrite. medium grained texture (1-2mm.) end of Box No. 5			
33.1	33.3	quartz-chlorite (50% chlorite) w/fine-grained pyrite. nonmagnetic.			
33.3	39.0	same as 27.2 - 33.1 m. end of Box No. 6			
39.0	39.2	same as 33.3-39.0m.			
39.2	44.9	altered medium-grain quartz diorite pink feldspar, chlorite, grey quartz epidote, nonmagnetic. patches of silicification throughout. heavily silicified zones contain 0.5% disseminated pyrite. end of Box No. 7			
44.9	45.1	altered quartz diorite, pink feldspar, no pyrite.			
45.1	46.0	heavy silicification. 0.5% pyrite.			
46.0	49.0	altered quartz diorite, pink feldspar minor silicification.			
49.0	50.9	broken core, same mineralogy as 46.0 to 49.0m. End of Box No. 8			
50.9	54.0	heavy silicification. dark grey-green quartz (amorphous). nonmagnetic, 0.5% pyrite.			
54.0	56.7	altered dark red quartz diorite, nonmagnetic, no pyrite. minor silicification. End of Box No. 9			
56.7	58.2	altered red quartz diorite, iron-stained feldspar. no pyrite. nonmagnetic.			
58.2	59.0	heavily silicified red altered quartz diorite. 0.5% pyrite. nonmagnetic.			
59.0	62.5	red quartz diorite as in 56.7-58.2 m. end of Box No. 10			
62.5	68.1	red to grey altered quartz diorite, minor silicification which carries 0.5% pyrite, otherwise no pyrite. nonmagnetic. End of Box No. 11			

*Bill Lutz*

<u>Metres</u>		<u>Description</u>	<u>Sample</u> <u>No.</u>	<u>Au</u>	
<u>from</u>	<u>to</u>			<u>from</u>	<u>to</u>
68.1	72.0	highly silicified red quartz diorite. 0.5% pyrite. nonmagnetic.			
72.0	74.0	altered quartz diorite (red) 30-50% chlorite with occasional patches of 1% pyrite. nonmagnetic. heavily silicified section @ 73.5-73.7m. End of Box 12			
74.0	80.0	red quartz diorite, numerous small sections of silicification. sections @ 74.2-74.5m. 76.3-76.5m. 76.5-80.0m. all slightly magnetic. End of Box 13			
80.0	85.9	pale red altered quartz diorite, nonmagnetic, minor to moderate silicification throughout, occasional random paperthin carbonate filled fractures. 0.5% pyrite where silicification most intense. end of Box 14			
85.9	89.5	partly silicified dark red quartz diorite w/30-40% chlorite. nonmagnetic no pyrite.			
89.5	91.7	silicified grey quartz diorite w/ occasional grains of pyrite. non magnetic. end of Box 15			
91.7	97.7	silicified altered quartz diorite, nonmagnetic. most intense silicification @ 95.5-97.7 m. some carbonate stringers (1mm.) @ 45°/core axis. 0.5-1.0% pyrite. end of Box 16			
97.7	99.5	dark grey-green silicified quartz diorite. 1% pyrite.			
99.5	96.3	pale green silicified altered quartz diorite. occasional grains of pyrite.			
96.3	103.5	pale red to pale green altered quartz diorite, may be fracture zone. nonmagnetic. End of Box 17			
103.5	105.0	dark to light grey, silicified quartz diorite. 104.5 to 105.0m minor hematite stain in fracture planes. occasional euhedral fine grains of pyrite. nonmagnetic End of Box 18. End of Hole			

*Al J. J. J.*

Tasu Resources Ltd.

Diamond Drill Hole No. Two  
Shoal Lake Project, Glass Twp.  
Kenora Mining Division

Location: Claim K489120, Island D219, Glass Township  
Line 2800 East, 1645 South

Dates: Started June 20, 1983, finished June 23, 1983


Hole Length: 105 metres      Core Size: BQ, 1 1/8 inch, sludge samples  
collected each 3 metres.

Hole Azimuth: 180 degrees.

Hole Inclination: -45 degrees, HF test at 105 metres.

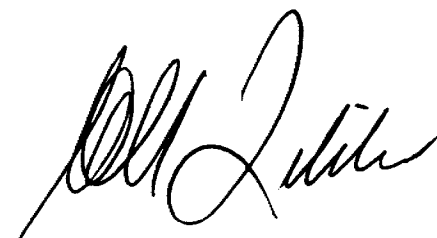
Core logged & sampled by H. G. Tibbo

Core & sludge stored on the property of Mr. E. Eastwood, Clearwater Bay,  
Ontario.



Diamond Drill Hole No. Two  
Shoal Lake Project, Glass Twp.  
Kenora Mining Division

<u>Metres</u> <u>from</u> <u>to</u>	<u>Description</u>	<u>Sample</u> <u>No.</u>	<u>from</u> <u>to</u>	<u>Au</u> <u>oz/s.t.</u>
0      5.3	overburden. casing. no core			
5.3   11.1	dark to light red quartz diorite (chlorite after hornblende) with patches of grey-blue silicification. less than 0.5% pyrite overall. nonmagnetic. section is densely fractures & fractures are recemented by carbonate. fractures occur at parallel to 60° to core axis. End of Box No. 1			
11.1   11.3	pink quartz diorite. no pyrite.			
11.3   12.6	bluish grey silicified quartz diorite less than 0.5% pyrite. nonmagnetic			
12.6   13.9	slightly silicified pink quartz diorite. no pyrite. nonmagnetic			
13.9   16.9	grey silicified quartz diorite, i.e., silicified pink quartz diorite. less than 0.5% pyrite. nonmagnetic. slightly fractured. end of Box No. 2			
16.9   18.6	slightly silicified red quartz diorite medium grained, chlorite (after hornblende) is 4-5mm. less than 0.5% pyrite. nonmagnetic.			
18.6   19.0	blue-grey silicified quartz diorite 1-2% pyrite. nonmagnetic.			
19.0   22.7	slightly silicified pink-white quartz diorite. no pyrite. nonmagnetic. end of Box No. 3			
22.7   24.2	pink-white quartz diorite. no pyrite slightly magnetic.			
24.2   26.2	highly silicified quartz diorite. 1% pyrite.			
26.2   28.5	slightly altered & fractured red quartz diorite. nonmagnetic. no pyrite. End of Box No. 4			
28.5   34.5	dark red quartz diorite. feldspars Fe stained w/occasional grey silicified sections (2-5 cm. length) minor fracturing. slight bleaching immediately adjacent to fracture lines also slightly magnetic. silicified sections carry 0.5 - 1% pyrite & are nonmagnetic. End of Box No. 5.			
34.5   35.0	unaltered pink quartz diorite. minor epidote. slightly magnetic. no pyrite.			
35.0   35.4	bleached silicified quartz diorite. 1-2% fine grained pyrite. nonmagnetic.			
35.4   40.3	dark red altered, partly silicified quartz diorite. nonmagnetic. 0.5%			



Diamond Drill Hole No. Two  
Shoal Lake Project, Glass Twp.  
Kenora Mining Division

<u>Metres</u> <u>from</u> <u>to</u>	<u>Description</u>	<u>Sample</u> <u>No.</u>	<u>from</u> <u>to</u>	<u>Au</u> <u>oz/s.t.</u>
35.4   40.3	0.5% pyrite. patches of grey-blue silicified sections. some fracturing parallel or 60° to core axis. carbonate cement in fracture planes. End of Box No. 6			
40.3   41.3	dark red quartz diorite. Fe stained feldspar. magnetic. no pyrite.			
41.3   41.8	grey-blue silicified quartz diorite. 1-2% pyrite. nonmagnetic intense fracturing & carbonate cement in fractures. fractures @ 60° to core axis.			
41.8   42.8	same as 40.3 - 41.3 m. but not magnetic.			
42.8   44.3	grey-blue silicified zine, 1% pyrite, nonmagnetic w/patches of dark red quartz diorite.			
44.3   46.2	pink-white quartz diorite. partly silicified hence mixture of pink-white & grey-blue quartz diorite. 0.5% pyrite. nonmagnetic. end of Box No. 7			
46.2   51.0	pink-white quartz diorite & zones of blue-grey alteration (silicification) throughout. 1% pyrite in silicified zones.			
51.0   52.2	dark blue-green silicified section. 1-2% pyrite. End of Box 8			
52.2   53.1	blue-grey silicified zone, highly fractured. 1-2% pyrite. nonmagnetic.			
53.1   55.0	pink-white quartz diorite w/patches of blue-grey silicification which contain 0.5% fine grained pyrite. nonmagnetic.			
55.0   57.0	fracture zone. grey-blue silicification w/1-2% pyrite & patches of pink-white quartz diorite.			
57.0   58.0	red quartz diorite, i.e., feldspars stained by Fe. no pyrite. nonmagnetic End of Box No. 9			
58.0   60.0	dark red quartz diorite, i.e. feldspars iron stained. nonmagnetic. 58.6 - 58.8m 20cm. fracture zone intense silicification. carbonate fractures 90° to core axis.			
60.0   63.9	alternating pink-white quartz diorite & grey-green to dark grey 10-30 cm. bands of intense silicification which contains 1% pyrite. nonmagnetic.			



Diamond Drill Hole No. Two  
Shoal Lake Project, Glass Twp.  
Kenora Mining Division

<u>Metres</u>		<u>Description</u>	<u>Sample</u>	<u>from</u>	<u>to</u>	<u>Au</u>
<u>from</u>	<u>to</u>					
60.0	63.9	<u>continued</u> 60.5-60.9 typical grey-green zone 60.6-60.7 quartz vein w/10% pyrite fractures in this zone contain carbonate & all fractures are 45° to core axis. End of Box 10				
63.9	66.0	relatively unaltered pinkish-white quartz diorite. ½ the feldspars are pink & ½ are white. no pyrite. nonmagnetic. 10 cm. bands of grey- green silicified quartz diorite w/1% pyrite @ 65.8, 65.4, 65.0, 64.8.				
66.0	69.8	mixed zone, alternating 10-20 cm. sections of dark red quartz diorite i.e. feldspars are Fe stained & grey- green silicified sections. grey-green sections carry 1% pyrite. end of Box No. 11				
69.8	75.8	dark grey, highly altered (silicified) quartz diorite. 0.5-1% pyrite throughout nonmagnetic. numerous rewelded fractures. End of Box No. 12				
75.8	77.1	grey-green silicified zone. 0.5-1% pyrite. paper-thin carbonate bands @ 45° to core axis. nonmagnetic.				
77.1	81.7	alternating dark green to dark red highly altered quartz diorite. quartz is dark blue & opaque. 1% disseminated pyrite overall. appears to be rewelded fracture zone. carbonate in fracture planes. nonmagnetic. End of Box No. 13				
81.7	82.9	silicified, highly altered quartz diorite. nonmagnetic. 0.5-1% pyrite.				
82.9	84.0	dark red quartz diorite. Fe stained feldspar. 30% chlorite. 1% pyrite. slightly magnetic.				
84.0	87.6	highly altered, fractured & rewelded silicified quartz diorite. nonmagnetic 1% pyrite, very fine grained. colour from dark red to pale green. End of Box 14				
87.6	88.4	same as 84.0 to 87.6 m.				
88.4	89.2	light grey-green silicified quartz diorite. 1% pyrite.				
89.2	91.1	highly fractured (&rewelded) red quartz diorite. less than 0.5% pyrite. nonmagnetic.				



Diamond Drill Hole No. Two  
Shoal Lake Project, Glass Twp.  
Kenora Mining Division

---

<u>Metres</u>		<u>Description</u>	<u>Sample</u>	<u>from</u>	<u>to</u>	<u>Au</u> <u>oz/s.t.</u>
<u>from</u>	<u>to</u>		<u>No.</u>			
91.1	93.4	dark grey highly fractured (& rewelded) quartz diorite. carbonate in fracture planes. 1% pyrite. nonmagnetic. End of Box No. 15				
93.4	98.1	light grey-green quartz diorite nonmagnetic. intense silicification 1 % pyrite. nonmagnetic				
98.1	99.4	same as above but quartz is opaque and dark blue. 1% pyrite. End of Box No. 16				
99.4	105.0	same as 98.1 to 99.4 m. End of Box 17. End of Hole				

---



Diamond Drill Hole No. Three  
Shoal Lake Project, Glass Twp.  
Kenora Mining Division

Location: Claim K489120, Island D221, Glass Township  
2150East , 2125 South

Dates: Started June 23, 1983, finished June 27, 1983

Hole Length: 105 metres. Core Size: BQ, 1 1/8 inch, sludge samples  
collected each 3 metres.

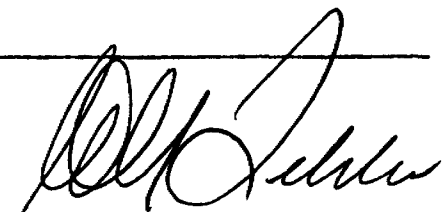
Hole Azimuth: 270 degrees

Hole Inclination: -45 degrees, HF test at 105 metres.

Core logged & sampled by H.G. Tibbo

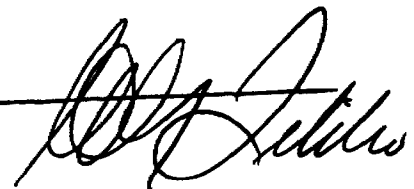
Core & sludge stored on the property of Mr. R. Eastwood, Clearwaater Bay, Ont.

<u>Metres</u> <u>from</u> <u>to</u>	<u>Description</u>	<u>Sample</u> <u>No.</u>	<u>from</u> <u>to</u>	<u>Au</u> <u>oz./g.t.</u>
0      2.6	overburden.casing.no core			
2.6    7.8	pink altered quartz diorite,slightly magnetic. no pyrite			
7.8    8.5	highly silicified quartz diorite grey-green, fine grained.no pyrite slightly magnetic. End of Box One			
8.5   14.4	slightly magnetic red to grey medium grained quartz diorite slightly silicified. 0.5% pyrite. carbonate reaction in silicified zones. End of Box No. 2			
14.4   20.2	same as 8.5 to 14.4 m. magnetism diminishes towards 18.7 m.& ends there. End of Box three			
20.2   21.0	altered red quartz diorite.			
21.0   22.0	highly silicified grey-green quartz diorite. 1-2% pyrite.			
22.0   24.3	moderately silicified quartz diorite 0.5-1% pyrite.			
24.3   26.3	pink quartz diorite End of Box No. Four			
26.3   32.1	no visible pyrite.nonmagnetic otherwise same as Boxes 2&3 End of Box Five			
32.1   38.0	altered medium grained red quartz diorite w/red stained feldspar from Fe in chlorite. grey quartz, chlorite. apparent silicification(grey amorphous quartz in rewelded fractures) occasional grains of pyrite.nonmagnetic. End of Box No. Six			



Diamond Drill Hole No. Three  
Shoal Lake Project, Glass Twp.  
Kenora Mining Division

<u>Metres</u>		<u>Description</u>	<u>Sample</u>	<u>from</u>	<u>to</u>	<u>Au</u>
<u>from</u>	<u>to</u>		<u>No.</u>			
38.0	42.0	intensely fractured, silicified pink quartz diorite. 0.5-1% very fine grained pyrite. nonmagnetic carbonate in rewelded fractures.				
42.0	43.9	fractured but not quite so intensely silicified quartz diorite. pink & white feldspar, chlorite, bluish, opaque quartz. occasional grains of fine grained pyrite. End of Box No. 7				
43.9	49.8	same as 38.0-42.0 m. above End of Box No. 8				
49.8	50.1	medium grained (3-4cm.) pink quartz diorite. nonmagnetic. no pyrite.				
50.1	52.7	grey-green silicified quartz diorite nonmagnetic. 1% pyrite				
52.7	55.7	altered pink quartz diorite w/ minor epidote. nonmagnetic. no pyrite. End of Box No. 9				
55.7	58.4	altered pink quartz diorite. pink & white feldspar, minor epidote, grey quartz., 25-35% chlorite, medium grained (3-4mm) no pyrite, nonmagnetic				
58.4	59.6	intensely silicified dark grey quartz diorite. 0.5% pyrite. non-magnetic.				
59.6	61.7	same as 55.7-58.4 m. End of Box No. 10				
61.7	67.6	grading from slightly pink to white feldspars. minor epidote. 30-40% chlorite (3-4mm. grain size) End of Box No. Eleven				
67.6	70.5	altered grey quartz diorite				
70.5	72.0	intense silicification of quartz diorite. no pyrite. nonmagnetic				
72.0	73.5	same as 67.6-70.5 m. End of Box No. 12				
73.5	74.0	silicified quartz-chlorite diorite 0.5%-1% pyrite. nonmagnetic.				
74.0	77.3	slightly altered quartz diorite. nonmagnetic.				
77.3	78.6	silicified quartz diorite, grey-green colour. 1% pyrite. nonmagnetic.				
78.6	79.5	quartz diorite; grey quartz, white altered feldspar, 2-3mm. grains of chlorite End of Box No. 13				
79.5	85.3	quartz diorite. grey qtz., white altered feldspar, 1-3mm. grains chlorite. minor epidote. occasional grains of pyrite. nonmagnetic End of Box No. 14				



Diamond Drill Hole No. Three  
Shoal Lake Project, Glass Twp.  
Kenora Mining Division

<u>Metres</u>		<u>Description</u>	<u>Sample</u> <u>No.</u>	<u>from</u>	<u>to</u>	<u>Au</u> <u>oz/s.t.</u>
<u>from</u>	<u>to</u>					
85.3	91.2	quartz diorite, altered. minor epidote. nonmagnetic. 10 cm. section of silicification @ 90 m. 0.5% pyrite overall. minor carbonate in silicified section. End of Box 15				
91.2	97.1	quartz diorite. nonmagnetic. patches (5-10 cm) of intense silicification throughout. 0.5% pyrite. minor carbonate. End of Box 16				
97.1	102.9	quartz diorite, medium grained. 30-40% chlorite, opaque grey quartz, white plagioclase, minor pale yellow-green epidote. minor silicification. only occasional grains of pyrite. End of Box 17				
102.9	105.0	same as 97.1 to 102.9 m. End of Box 18 End of Hole				



Ministry of  
Natural  
Resources

Report  
of Work

SHOAL LAKE  
The Minin



52E10SW8519 32 SHOAL LAKE

# 83-83

900

Name and Postal Address of Recorded Holder

Harold George Tibbo

Apartment 1101, 322 Eglinton Avenue East, Toronto, Ontario M4P 1L6

Summary of Work Performance and Distribution of Credits

Total Work Days Cr. claimed 1033	Mining Claim			Work Days Cr.	Mining Claim			Work Days Cr.
	Prefix	Number	Work Days Cr.		Prefix	Number	Work Days Cr.	
For Performance of the following work. (Check one only)  <input type="checkbox"/> Manual Work  <input type="checkbox"/> Shaft Sinking Drifting or other Lateral Work.  <input type="checkbox"/> Compressed Air, other Power driven or mechanical equip.  <input type="checkbox"/> Power Stripping  <input checked="" type="checkbox"/> Diamond or other Core drilling  <input type="checkbox"/> Land Survey	K	489111	63	K	489742	63		
		489112	63		590321	200		
		489115	63		590328	200		
		489116	63					
		489117	63					
		489118	63					
		489119	63					
	489120	63						

All the work was performed on Mining Claim(s): K489120

ONTARIO GEOLOGICAL SURVEY  
ASSESSMENT RESEARCH  
AUG 1  
RECEIVED

Required Information eg: type of equipment, Names, Addresses, etc. (See Table Below)

Contractor: St. Lambert Drilling Ltd.  
P.O. Box 473, Valleyfield, Quebec J6S 4V7

315 metres, i.e., 1033 feet BQ (1 1/8 inch diameter) core.  
Each hole 105 metres, i.e., approximately 344.4 feet long.

Drilling dates June 17th, 1983 to June 27th, 1983

KENORA MINING DIV.  
RECEIVED  
JUL 4 1983  
AM 7:8:9:10:11:12:1:2:3:4:5:6 PM

Date of Report July 4, 1983  
Recorded Holder or Agent (Signature) *[Signature]*

Certification Verifying Report of Work

I hereby certify that I have a personal and intimate knowledge of the facts set forth in the Report of Work annexed hereto, having performed the work or witnessed same during and/or after its completion and the annexed report is true.

Name and Postal Address of Person Certifying

H. G. Tibbo, Apt. 1101, 322 Eglinton Avenue East, Toronto, Ontario M4P 1L6

Date Certified July 4, 1983  
Certified by (Signature) *[Signature]*

Table of Information/Attachments Required by the Mining Recorder

Type of Work	Specific information per type	Other information (Common to 2 or more types)	Attachments
Manual Work	Nil	489111 Names and addresses of men who performed manual work/operated equipment, together with dates and hours of employment.	Work Sketch: these are required to show the location and extent of work in relation to the nearest claim post.
Shaft Sinking, Drifting or other Lateral Work			
Compressed air, other power driven or mechanical equip.	Type of equipment	Names and addresses of owner or operator together with dates when drilling/stripping done.	Work Sketch (as above) in duplicate
Power Stripping	Type of equipment and amount expended. Note: Proof of actual cost must be submitted within 30 days of recording.		
Diamond or other core drilling	Signed core log showing; footage, diameter of core, number and angles of holes.		
Land Survey	Name and address of Ontario land surveyor.	Nil	Nil

