



52E10SW8530 21 SHOAL LAKE

010

Diamond Drilling

Area of SHOAL LAKE

Report N^o 21

Work performed by: Hopkins & Heintzman

Claim N ^o	Hole N ^o	Footage	Date	Note
K 31936	E - 2	204'	Aug/61	(1)
	E - 3	53.5'	Aug/61	(1)

Notes:

(1) Formerly #12 Glass Twp.

Coordinates of Collar: 3240'E., 6600N.

COMPANY Hopkins - Heintzman

Glass Twp.

Claim No.

D.D.H. # E-2.

Dip -45°

Strike 120°

PROPERTY Q Zone, Glass twp., Shoal Lake, Kenora.

K.31936.

23 Aug. 1961.

Sample No.	Mr/Hr	Dist. from ft	Formation	Width ft.	Assay Value	%	%	Oz.	Oz.	Remarks
		0.0'	Casing.	1.0						No core.
		1.0	Diorite	10.1						Medium-grained, grey-green, with a fair amount of hornblende. It is cut by many fine seams of qtz.:-
										1.1 1/16" bull qtz seam, & 4.9', 7.4', & 8.6'.
		11.1	Andesite	3.4						Grey-green, fine-grained lava, amygdaloidal in places.
										13.0 1/8" bull quartz stringer.
		14.5	Diorite.	3.1						as above.
		17.6	Shear zone	6.9						altered sheared diorite.
										23.4'-23.7' is 90% qtz, with some pyrrho & sparse Hbpy.
		24.5	Diorite	127.3						Medium-grained, fresh-looking, 2/3 fels, 1/3 Hb.
										26.7 3/4" bull quartz stringer.
										32.7 1/2" bull quartz stringer
										39.0 1/2" bull quartz stringer
										42.0-43.0 1/2" bull qtz str running obliquely along core.
										46.1-46.5 1/2" ditto.
										49.2' 1" bull qtz seam.
										51.0 1/8" bull qtz. seam.
										58.4'-59.2' Bull quartz veinlet (a few specks pyrrho one/spot.
										62.5'-63.2' Bull quartz veinlet.

(continued)

Coordinates of Collar:

COMPANY _____

Claim No. _____

D.D.H. # _____

ip

Strike

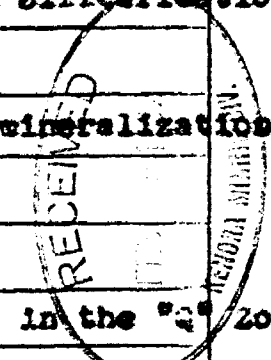
PROPERTY _____

Sample No.	Mr/Hr	Dist. from ft	Formation	Width ft.	Assay Value	%	%	Oz.	Oz.	Detailed Remarks
										66.1'-66.5' bull qtz stringer; 79.6'-81.9' is 95% qtz;
										89.5'-89.7' is 50% qtz; 94.6' is an 1/8" qtz seam.
901			100.8'-102.2'	1.4						whole core.
										101.4-101.6' is qtz & sericite with traces of ^{chalcopy.} pyrrho & /
										104.6-104.9' is qtz & sericite.
										127.2- 1/2" of quartz.
										128.6 1/4" quartz; 129.4' is 1/4" qtz with speck of chalcopy
										135.3 1/4" quartz; 148.2'-148.5' is qtz stringers.
										149.0 is an angular quartz splash.
		151.8	Shear Zone	17.4						Vertical, altered diorite schist & talc & sericite
902			152.6-154.2'	1.6						Shear zone.
										152.7 3 very fine-grained seams of <u>chalcopy</u> & cubes of <u>pyrite</u> or <u>pyrrhotite</u> in schist.
		159.2	Diorite.	9.9						becoming finer-grained & more altered toward the andesite contact below.
										172.5' 1/4" bull qtz stringer, also at 181.1'.
										192.8' 1/8" qtz seam & a few specks of <u>chalcopy</u> .
		179.1	Andesite	24.9						Gray-green, fine-grained.
		204.0	End of hole.							Notes:- Core left at campsite on Little Starting Point. This hole was drilled to test the "Q" zone and the draw to the east of it, but nothing of ore interest was intersected. The core was logged by:-

A. Hopkins, B.A.Sc.

Coordinates of Collar: **3227'E, 6549'N** COMPANY **Hopkins-Heintzman / Post of E.31936.** Claim No. **E.31936** D.D.H. # **E-3**
 Dip **-50°** Strike **120°** PROPERTY **"Q" Zone, Glass twp., Shoel Lake, Kenora.** **24 August 1961.**

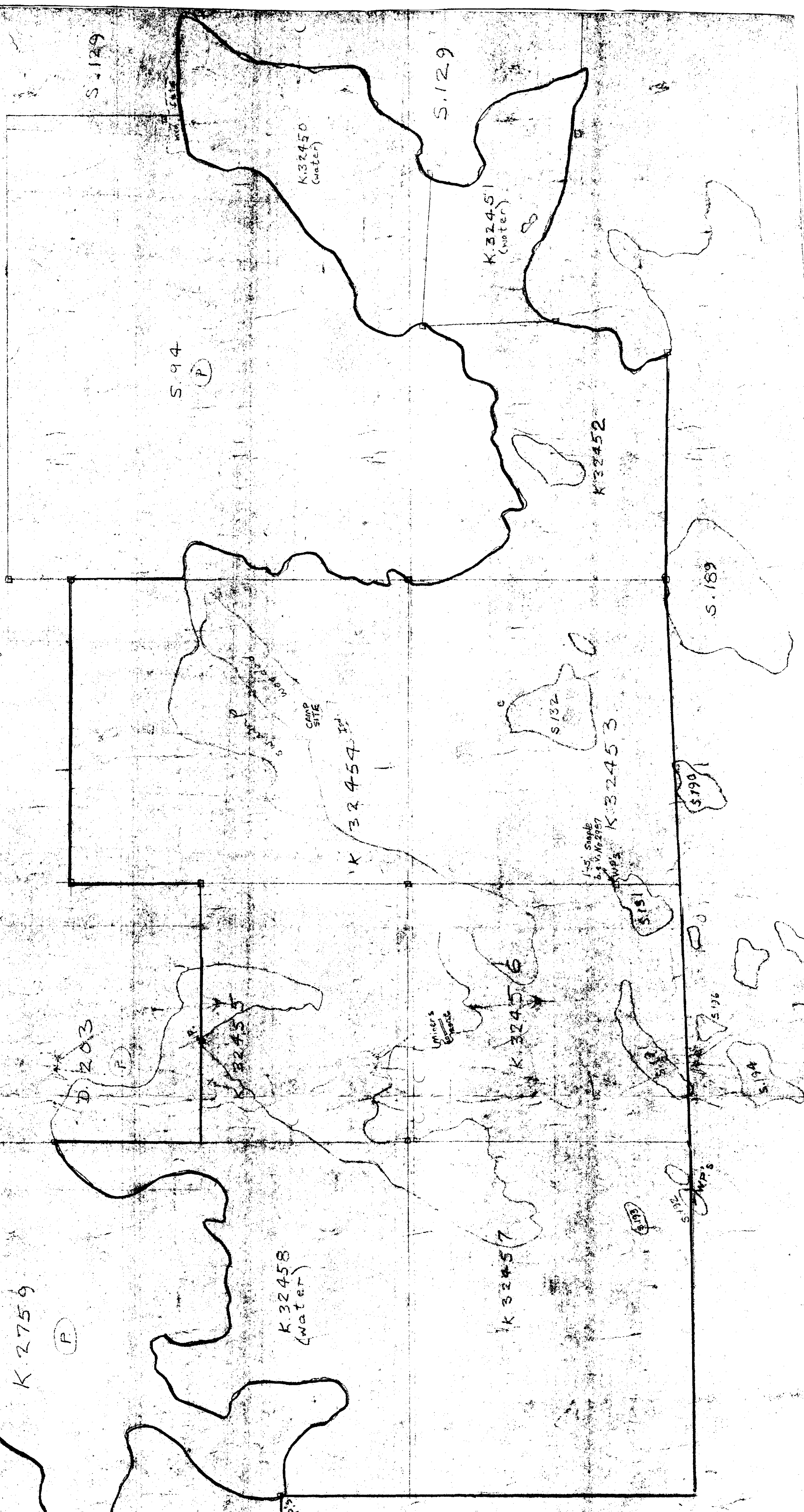
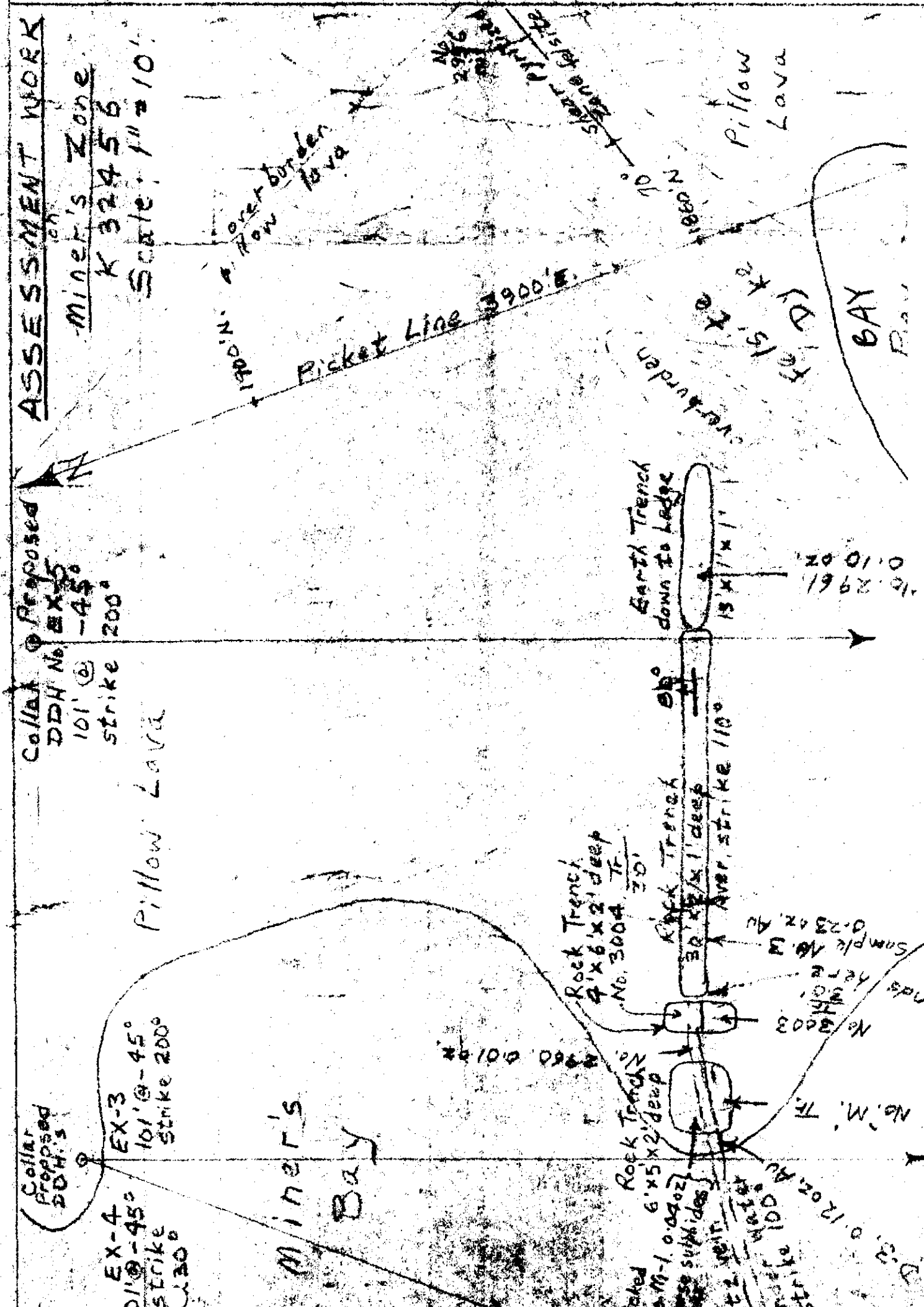
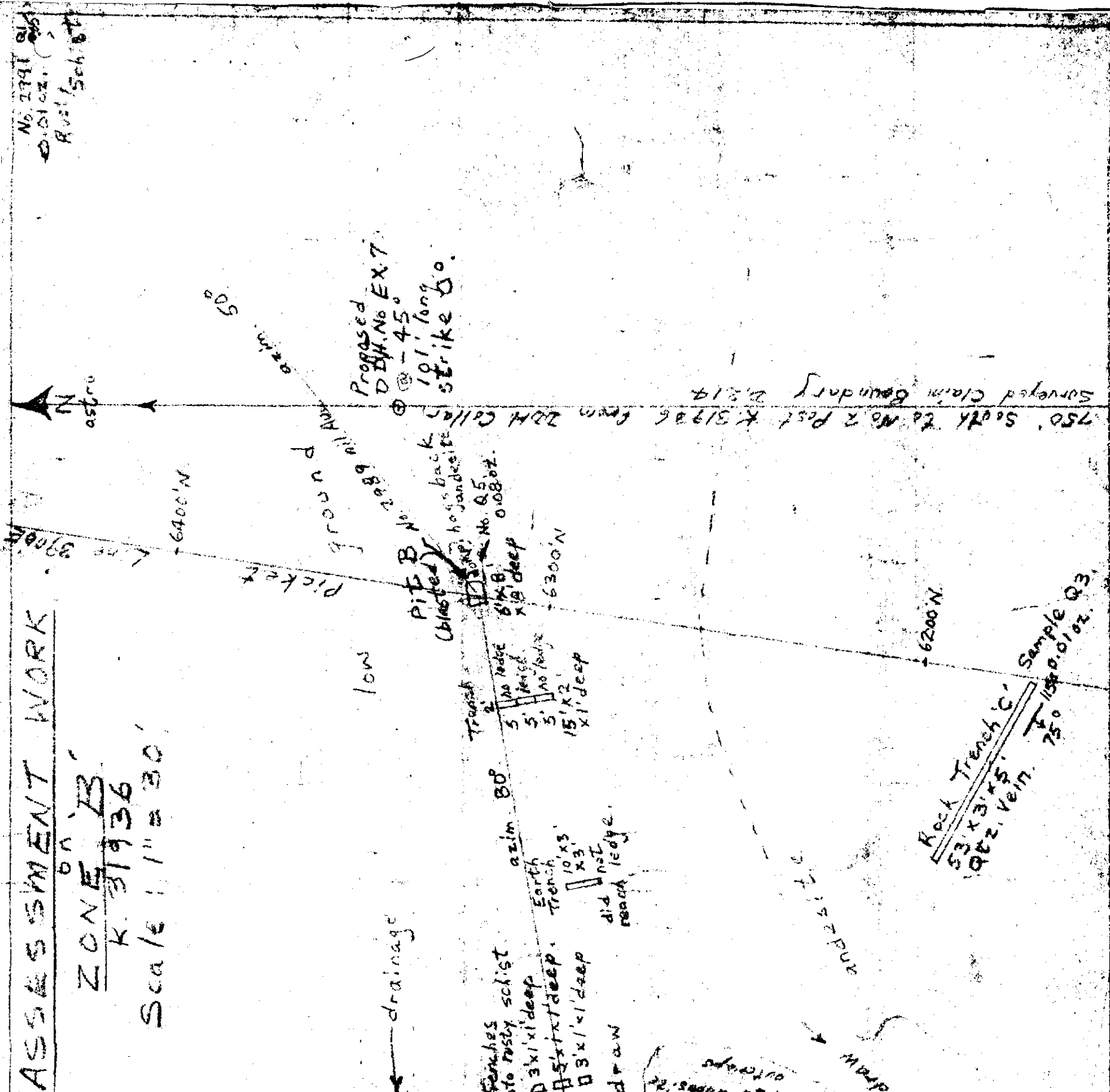
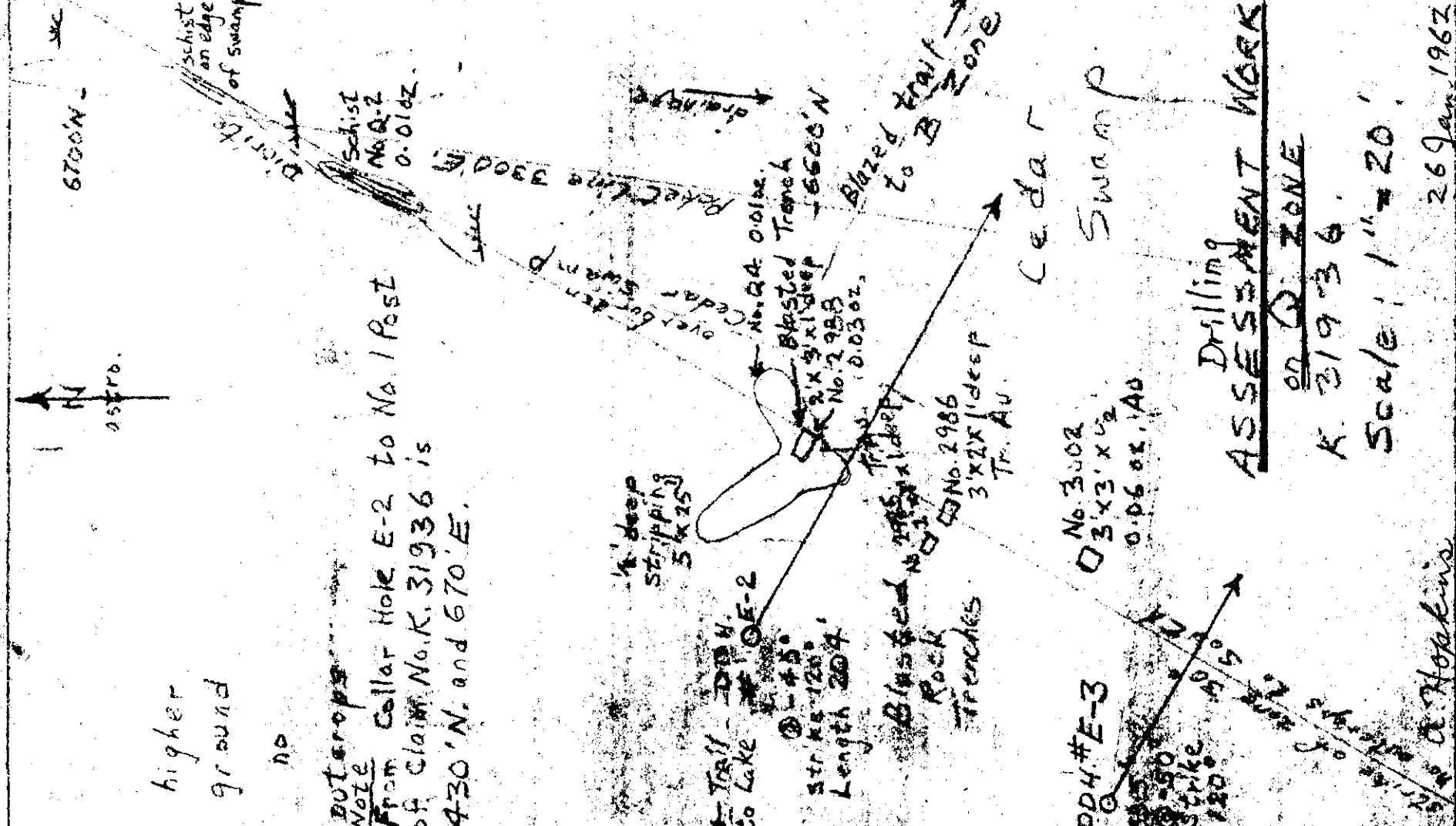
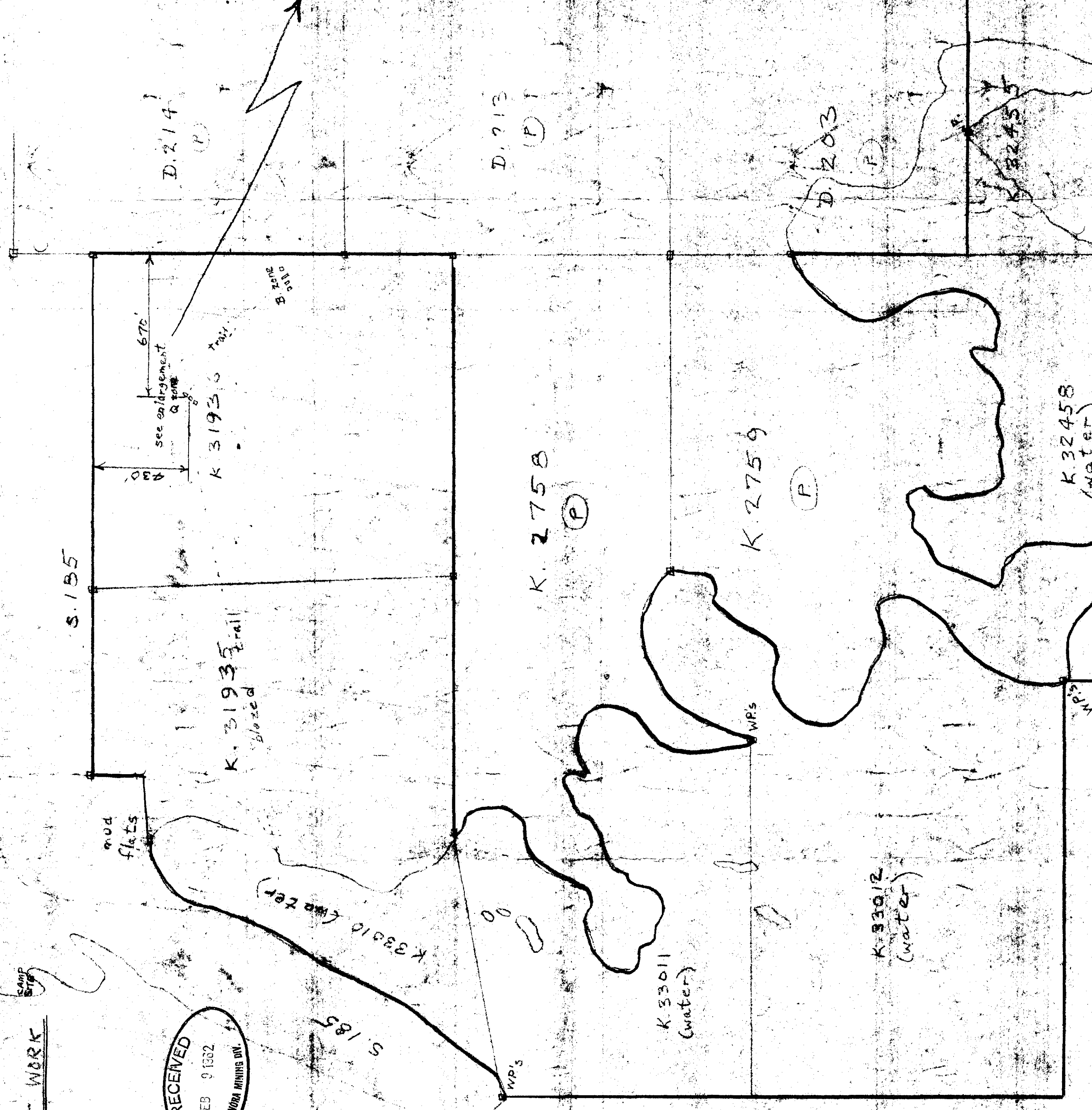
Sample No.	Mr/Hr	Dist. from ft	Formation	Width ft.	Assay Value	%	%	Oz.	Oz.	Remarks
		0.0	Casing	9.0						
		9.0	Diorite	17.5						Medium-grained, grey-green, with a fair amount of hornblende. It is cut by many narrow seams of quartz.
3020		26.5	"Q" Zone ?	1.5						Whole core, some mineralization & silicification.
		28.0	Diorite	14.0						As above.
		42.0	10% quartz	1.5						Silicification with no sulphide mineralization.
		43.5	Diorite	10.0						As above
		53.5	End of hole							
										Notes- Altho hole E-2 failed to cut ore in the "Q" zone, it was felt that one more short hole should be expended before quitting this zone or "writing it completely off". This hole, E-3, was thus drilled, and like hole No. E-2, it also failed to find any ore. The drill core is stored at the campsite on Little Starting Point. The core was logged by <i>Albert Hopkins</i>
										Albert Hopkins, B.A.Sc.



**MAP SHOWING
GROUPING AND ASSESSMENT WORK
on 14-Claim Property**

Albert Hopkins
Lic No. E. 12440
Glass Twp., Shoal Lake
Scale: 1" = 300'
July 1961

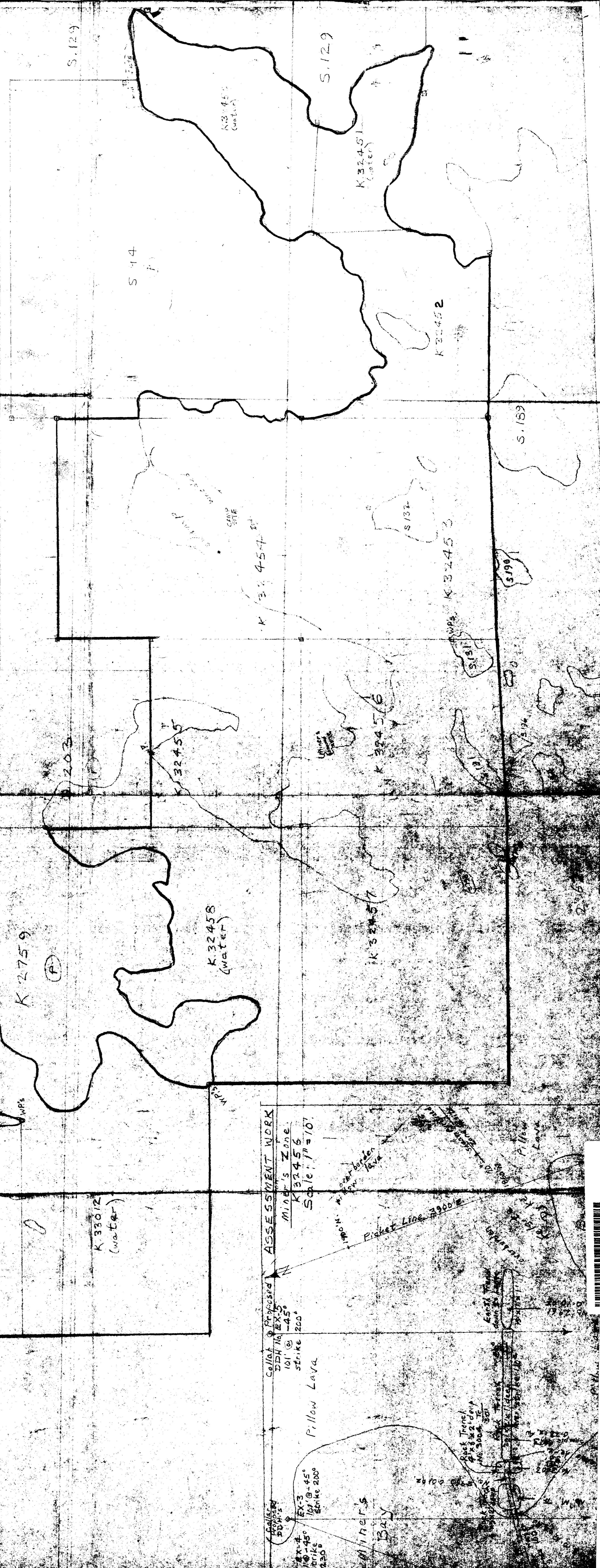
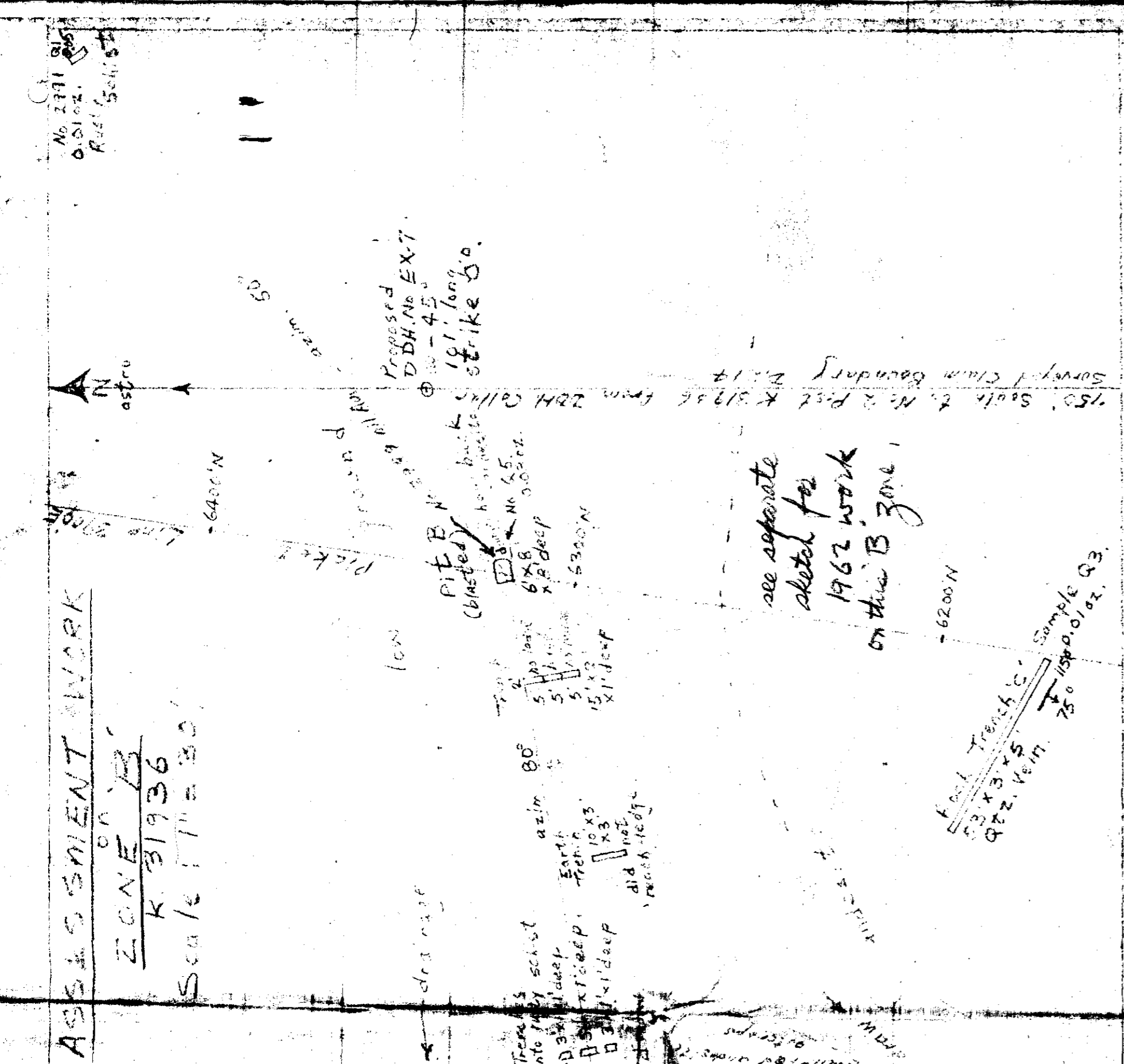
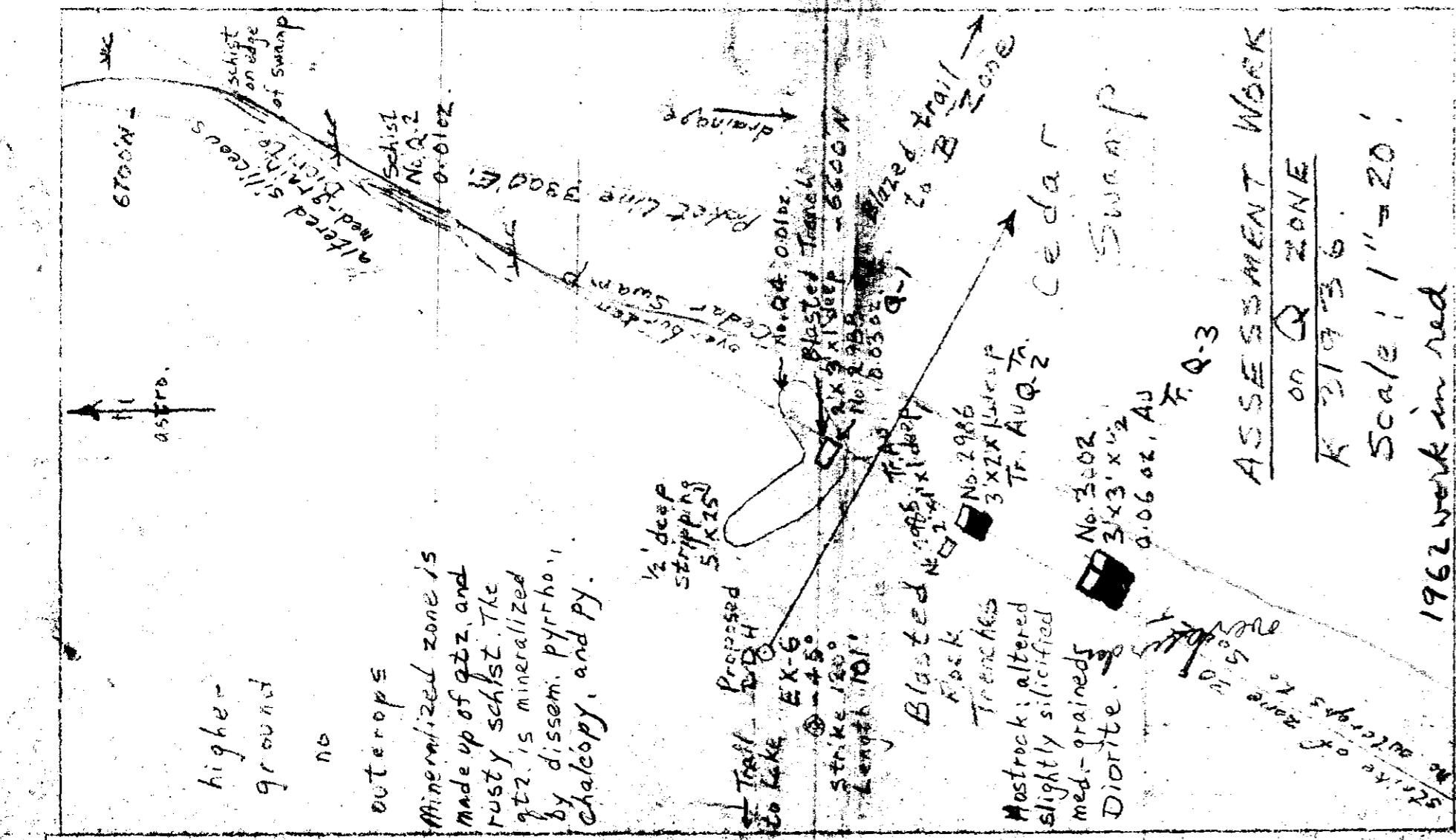
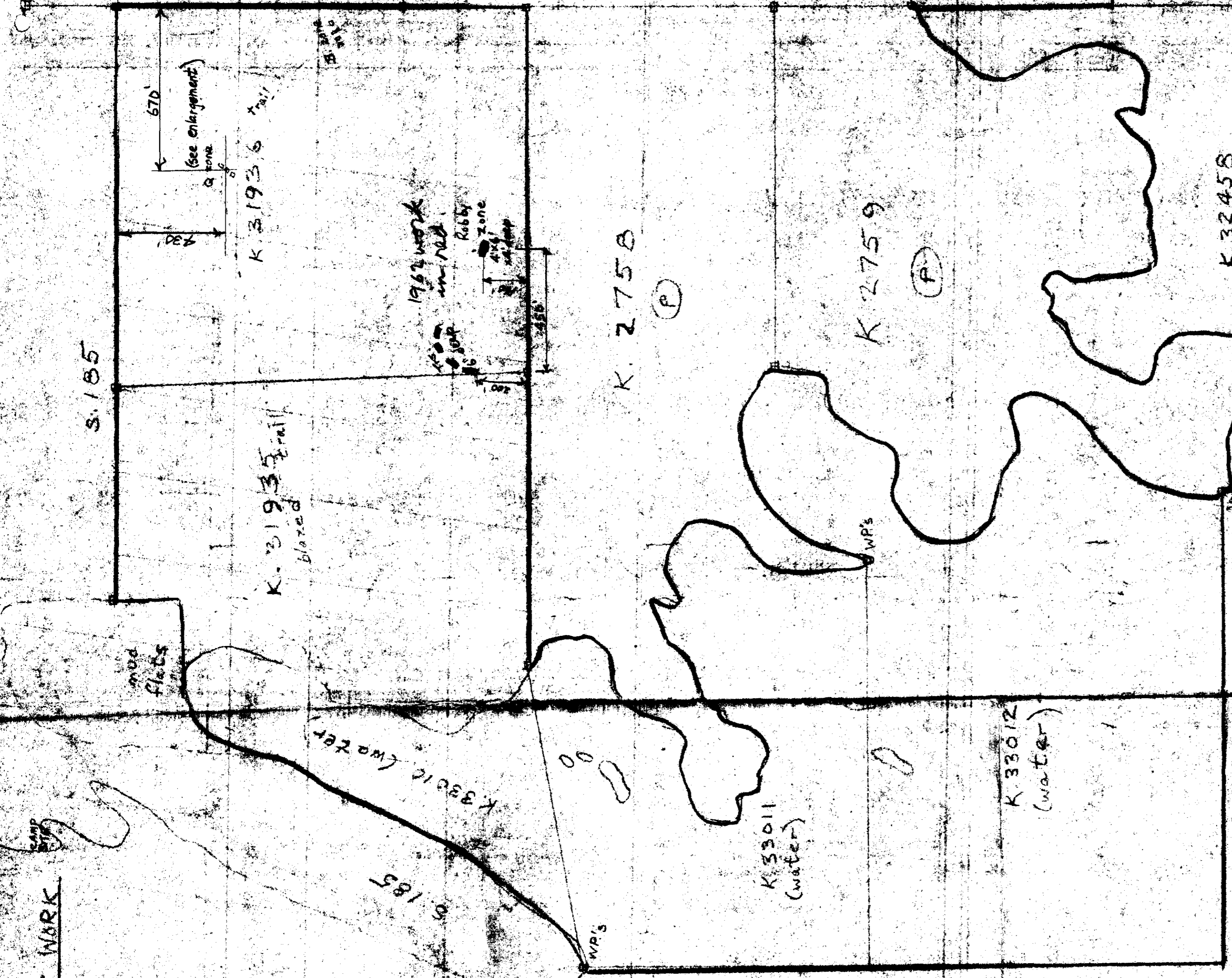
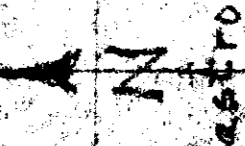
RECEIVED
FEB 9 1962
KEMBR MINEING DIV.



MAP SHOWING
BOUNDING AND ASSESSMENT WORK
on 1/2 Claim Property

Albert Hopkins
Lic. No. E. 12490
Glass Twp., Show Lake
Scale: 1" = 300'
July 1951, revised 13 Oct. 1962
A. Hopkins

RECEIVED
OCT 23 1962
MINING DIV.



ASSESSMENT WORK
Miner's Zone
K 32455
Scale: 1" = 10'

Callat
D.D.H. No. 45
101 @ -45°
strike 200°
Pillow Lava

Callat
D.D.H. No. 45
101 @ -45°
strike 200°
Pillow Lava

Miner's Bay

Callat
D.D.H. No. 45
101 @ -45°
strike 200°
Pillow Lava