



52E11NE9060 15 EWART

010

Diamond Drilling

Area Indian Bay (Ewart Twp)

Report N^o 15

Work performed by: C. Alcock & M. Tew

Claim N ^o	Hole N ^o	Footage	Date	Note
K 32307	H.L. 1	114'	Jan/63	
	H.L. 2	158'	Jan/63	

Notes:

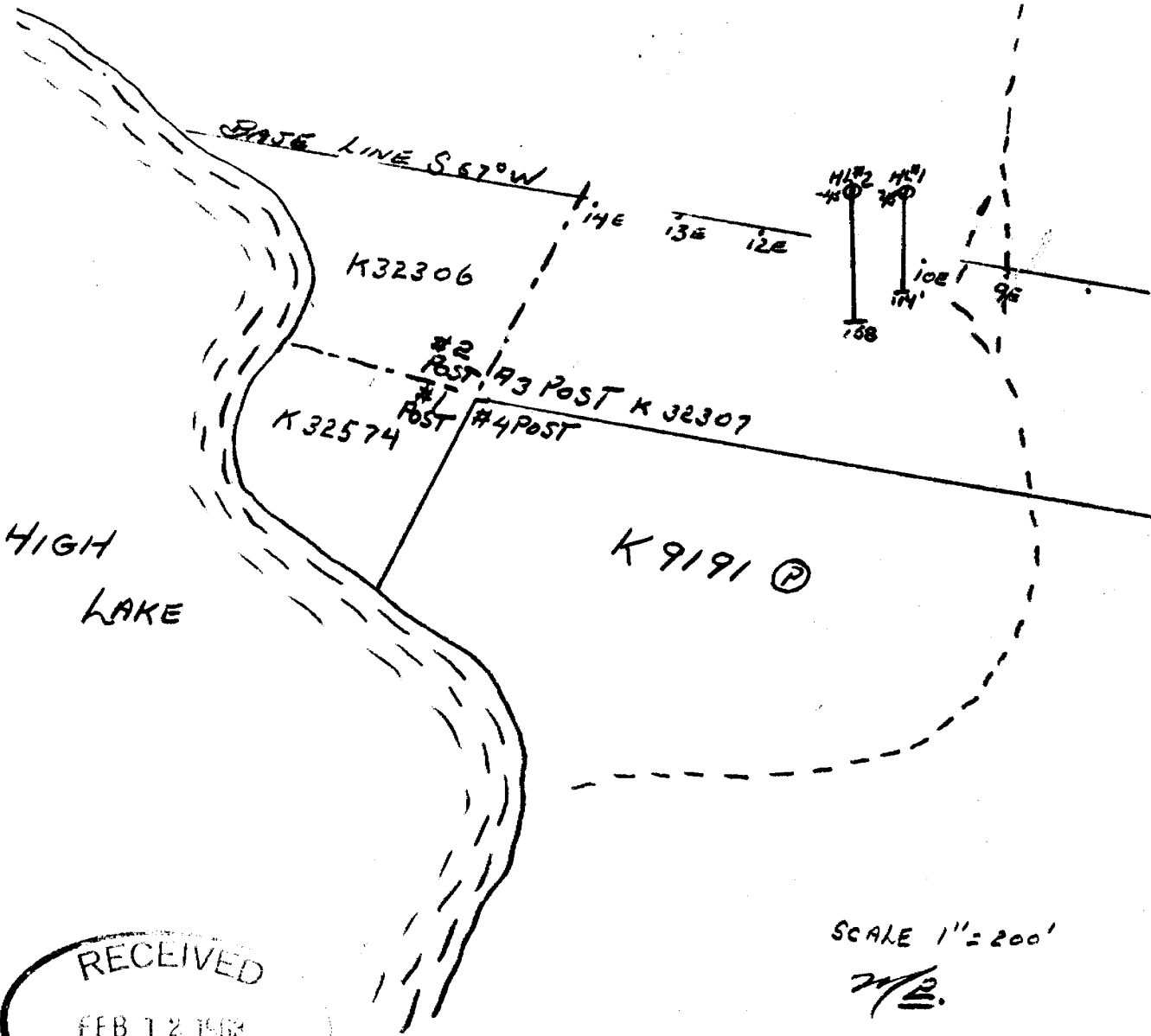
D.D.H. # H.L. #1 2715' N 3720' E } OF #3 POST
 D.D.H. # H.L. #2 1490' N 2468' E } K32307

JAN 17 TO JAN 1974.

BEARING BOTH S350E

DIP BOTH 45°

DEPTH #1 114' #2 158'



RECEIVED
 FEB 12 1968
 KENORA MINING DIV.

DIAMOND DRILL RECORD

PROPERTY K 32307 HOLE No. H.L. #2
 SHEET NUMBER 1 SECTION FROM _____ TO _____ STARTED Jan 18th 1963
 LATITUDE 10 - 90 W. DATUM _____ COMPLETED Jan 19th 1963
 DEPARTURE 0 - 80 N. BEARING S 35D. E. ULTIMATE DEPTH 158'
 ELEVATION Overburden DIP - 45D. PROPOSED DEPTH _____

DEPTH FEET	FORMATION	SAMPLE NO.	FROM	TO	WIDTH	ASSAY VALUES		
0-8'	Casing							
8-39'	Feldspar Porphyry - pink to red-dish colour. Poor mineralization cut by few small Qtz. strgs. (fair molly). Slightly sheared @ 32-33' Fracturing @ 45D. to core.							
39-47.5	Feldspar Porp. - Pale Pink colour cut by large qtz. strgs. Good Molly.	H.L.#8	39	43	4			
47.5-49	Qtz. vein. 15D. to core. Poor mineralization. Molly & Pyrite.							
49-54	Feldspar Porphyry bluish grey colour. Poor Min.							
54-56.5	Qtz. vein. Fairly well mineralized							

RECEIVED
 FEB 12 1963
 KANDORA MINING CO.

NORTHERN MINER FORM 808 REV. 754

DRILLED BY J.H. Edwards Diamond Drilling Ltd.

SIGNED _____

Cecil Alcock - Mervin Tew

DIAMOND DRILL RECORD

PROPERTY..... HOLE No.....
 SHEET NUMBER 2 SECTION FROM..... TO..... STARTED.....
 LATITUDE..... DATUM..... COMPLETED.....
 DEPARTURE..... BEARING..... ULTIMATE DEPTH.....
 ELEVATION..... DIP..... PROPOSED DEPTH.....

RECEIVED
 FEB 17 1954
 KENORA MINING CO.

DEPTH FEET con't	FORMATION	SAMPLE NO.	FROM	TO	WIDTH	ASSAY VALUES	
						MO	AU
	with molybdenite & pyrite.	H.L.#9	54	58	4		
56.6-79	Feldspar porphyry - pinkish colour	H.L.#10	58	64	6		
	slightly sheared & silicified in	H.L.#11	64	69	5		
	places. Fair min. Molly & pyrite						
	Jointing @ 45D.						
79-114	Qtz. Porphyry bluish grey in	H.L.#12	78.5	84	5.5		
	colour. Slightly sheared &						
	silicified in places. Fairly well	H.L.#13	84	89	5		
	mineralized with molly & pyrite.	H.L.#14	89	94	5		
	Good molly on some slips & joints	H.L.#15	94	99	5		
	@ 45D. to core. Specs of chalco.	H.L.#16	99	104	5		
114-137	Feldspar porphyry. Pinkish to white						
	colour. Cut by numerous Qtz. strgs						
	with fair Molly. Sheared & silicified						

DIAMOND DRILL RECORD

PROPERTY..... HOLE No.....

SHEET NUMBER **3** SECTION FROM..... TO..... STARTED.....

LATITUDE..... DATUM..... COMPLETED.....

DEPARTURE..... BEARING..... ULTIMATE DEPTH.....

ELEVATION..... DIP..... PROPOSED DEPTH.....

DEPTH FEET <i>con't</i>	FORMATION	SAMPLE NO.	FROM	TO	WIDTH	ASSAY VALUES		
	in places. Poor mineralization.							
137-147	Biotite schist - greyish black colour. Fair mineralization.							
	Pyrite & little chalco. Numerous calcite strgs. Highly silicified							
	143-144.5.							
147-158	Feldspar Porp - pink to greyish blue. Poor mineralization.							
	Fracturing @ 45D. to core.							
158	END OF HOLE							

RECEIVED

APR 12 1944

KENORA MINING DIV.

DIAMOND DRILL RECORD

PROPERTY HOLE No.
 SHEET NUMBER 4 SECTION FROM TO STARTED
 LATITUDE DATUM COMPLETED
 DEPARTURE BEARING ULTIMATE DEPTH
 ELEVATION DIP PROPOSED DEPTH

DEPTH FEET con't	FORMATION	SAMPLE NO.	FROM	TO	WIDTH	ASSAY VALUES		
90.5-109	carrying molybdenite mineralization Fair fracturing. 45 to 60D. to core.							
109-114.	Qtz. Porphyry. Bluish grey colour Poor mineralization. Pyrite & Molly? Fracturing @ 45D. to core							
114	END OF HOLE.							

RECEIVED
 FEB 12 1963
 KENORA MINING DIV.

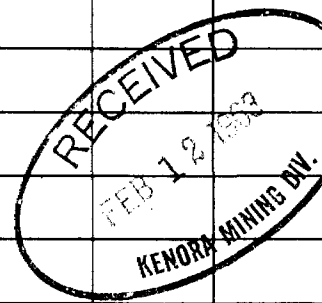
NORTHERN MINER FORM 805 REV./54

DRILLED BY J. H. Edwards Diamond Drilling Ltd. SIGNED Cecil Alcock - Mervin Tew

DIAMOND DRILL RECORD

PROPERTY HOLE No.
 SHEET NUMBER 3 SECTION FROM TO STARTED
 LATITUDE DATUM COMPLETED
 DEPARTURE BEARING ULTIMATE DEPTH
 ELEVATION DIP PROPOSED DEPTH

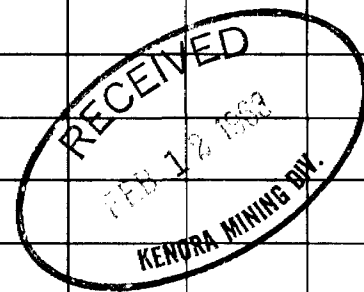
DEPTH FEET	FORMATION	SAMPLE NO.	FROM	TO	WIDTH	ASSAY VALUES		
cont								
52.5-57.5	with Molly & Pyrite. Shearing @ 45D. to core. (Dark Bluish Grey)							
57.5-61	Qtz. vein - Well mineralized with Molly & pyrite.	HL.#5	57.5	61	3.5			
61-67	Qtz - Porp. Slightly sheared & silicified. Fair Min. Dark bluish grey colour. Shearing @ 45D. to core.	HL.#6	61	67	6			
67-85.5	Qtz. Porphyry. Bluish grey colour. Poor mineralization. Fracturing @ 45 D.							
85.5-90.5	Same as above, only slightly sheared.	HL.#7	85.5	90.5	5			
90.5-109	Feldspar Porphyry - pale pinkish colour cut by numerous Qtz. veinlets							



DIAMOND DRILL RECORD

PROPERTY HOLE No.
 SHEET NUMBER 2 SECTION FROM TO STARTED
 LATITUDE DATUM COMPLETED
 DEPARTURE BEARING ULTIMATE DEPTH
 ELEVATION DIP PROPOSED DEPTH

DEPTH FEET con't	FORMATION	SAMPLE NO.	FROM	TO	WIDTH	ASSAY VALUES	
						MO	AU
26-27.5	Qtz. Porphyry highly sheared & silicified. Fair mineralization.						
27.5-30	Qtz. Vein. Well mineralized. Pyrite & Molly fracturing @ 45D.	HL.#3	29	29.5	45		
30-33.5	Qtz. Porphyry well sheared & mineralized, with pyrite & Molly shearing @ 45D.						
33.5-50	Biotite schist-lightly mineralized with pyrite & specs of chalco. Numerous stringers of calcite, fracturing @ 45D. to core.						
50-52.5	Qtz. Porphyry slightly sheared-Poor min.						
52.5-57.5	Qtz.-Porphyry well mineralized	HL.#4	52.5	57.5	5		



NORTHERN MINER FORM 805 REV./84

DRILLED BY _____

SIGNED _____

DIAMOND DRILL RECORD

EWART Twp.

PROPERTY K 32307 HOLE No. H.L. #1
 SHEET NUMBER 1 SECTION FROM TO STARTED Jan 16th 1963
 LATITUDE 10 - 40 W. DATUM COMPLETED Jan 17th 1963
 DEPARTURE 0 - 80 N. BEARING S 35D. E. ULTIMATE DEPTH 114'
 ELEVATION Overburden DIP - 45D. PROPOSED DEPTH

DEPTH FEET	FORMATION	SAMPLE NO.	FROM	TO	WIDTH	ASSAY VALUES	
						MO	AU
0-5	Casing						
5-12	Feldspar Porphyry - Pink to reddish colour. Slightly sheared, lightly mineralized pyrite, Molybdenite	HL.#1	7.5	12	4.5		
12-21	Biotite schist - slightly mineralized pyrite, odd specs chalco. Numerous calcite stringers with pink feldspar. Porphyry 16' to 17' @ 25D. to core.						
21-23	Feldspar porphyry - Fractures @ 45D. to core. No min.						
23-26	Qtz. vein. 45D. to core. Well mineralized with pyrite & Molly.						
	Specs of chalco	HL.#2	23	29	6		

RECEIVED
 FEB 12 1963
 KENDRA MINING DIV.

NORTHERN MINER FORM 505 REV./54

DRILLED BY J.H. Edwards Diamond Drilling Ltd.

SIGNED Cecil Alcock - Mervin Tew