



52E11NE0061 27 EWART

010

Diamond Drilling

Area of INDIAN BAY (Ewart Twp.)

Report NO 27

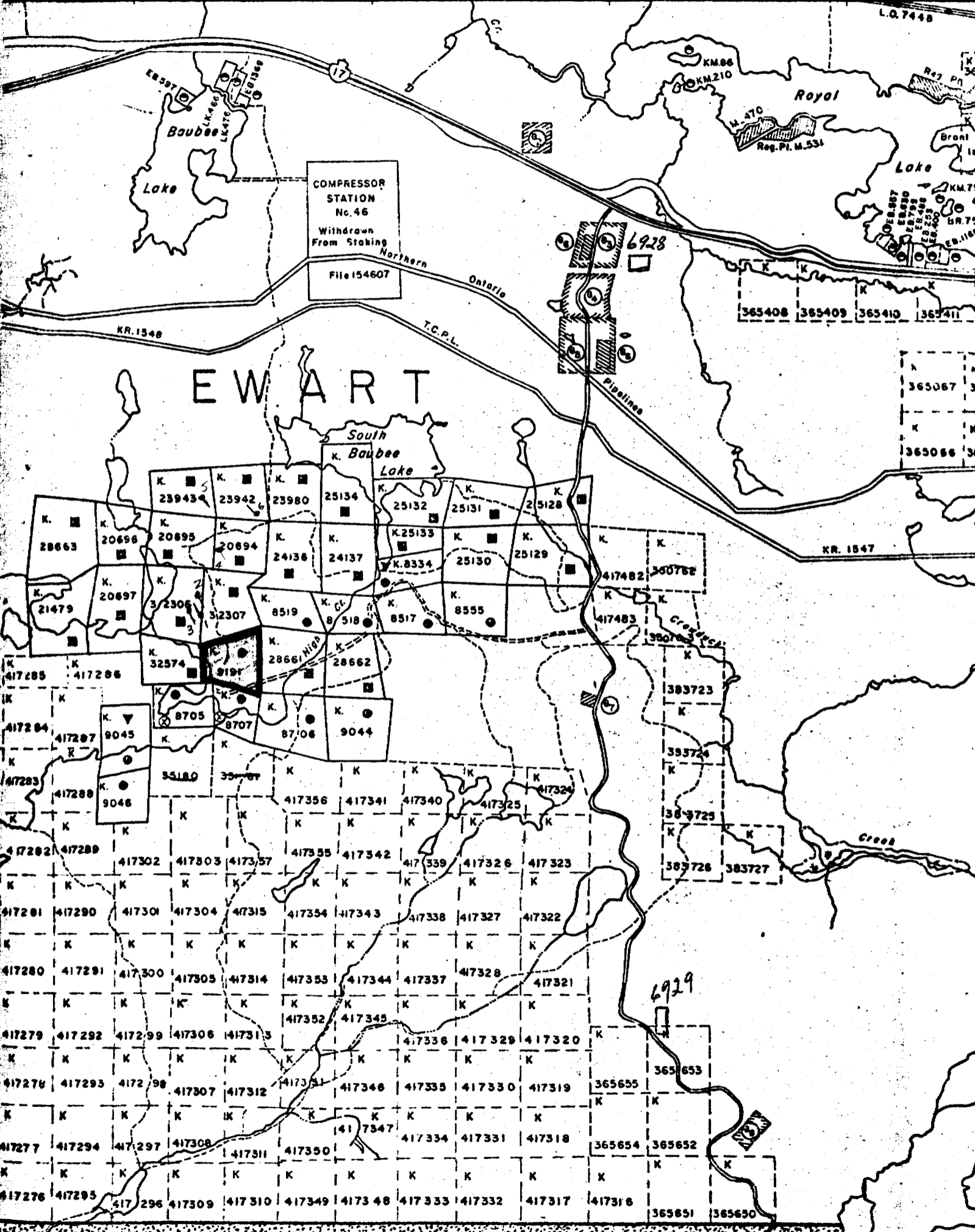
Work performed by: Green Bay Mining & Exploration

Claim NO	Hole NO	Footage	Date	Note
K-9191	K 32306 (17848)	1	367'	Sept/56
		2	336'	Sept/56
		3	364'	Sept/56
	K 2009A	4	322'	Sept/56
	K 2274B	5	353'	Oct/56
	K 23942	6	213'	Oct/56

*see logs
px*

Notes:

GUNDY (For Status Refer to T.P. Plan M-1984)
16M 15M 14M 13M



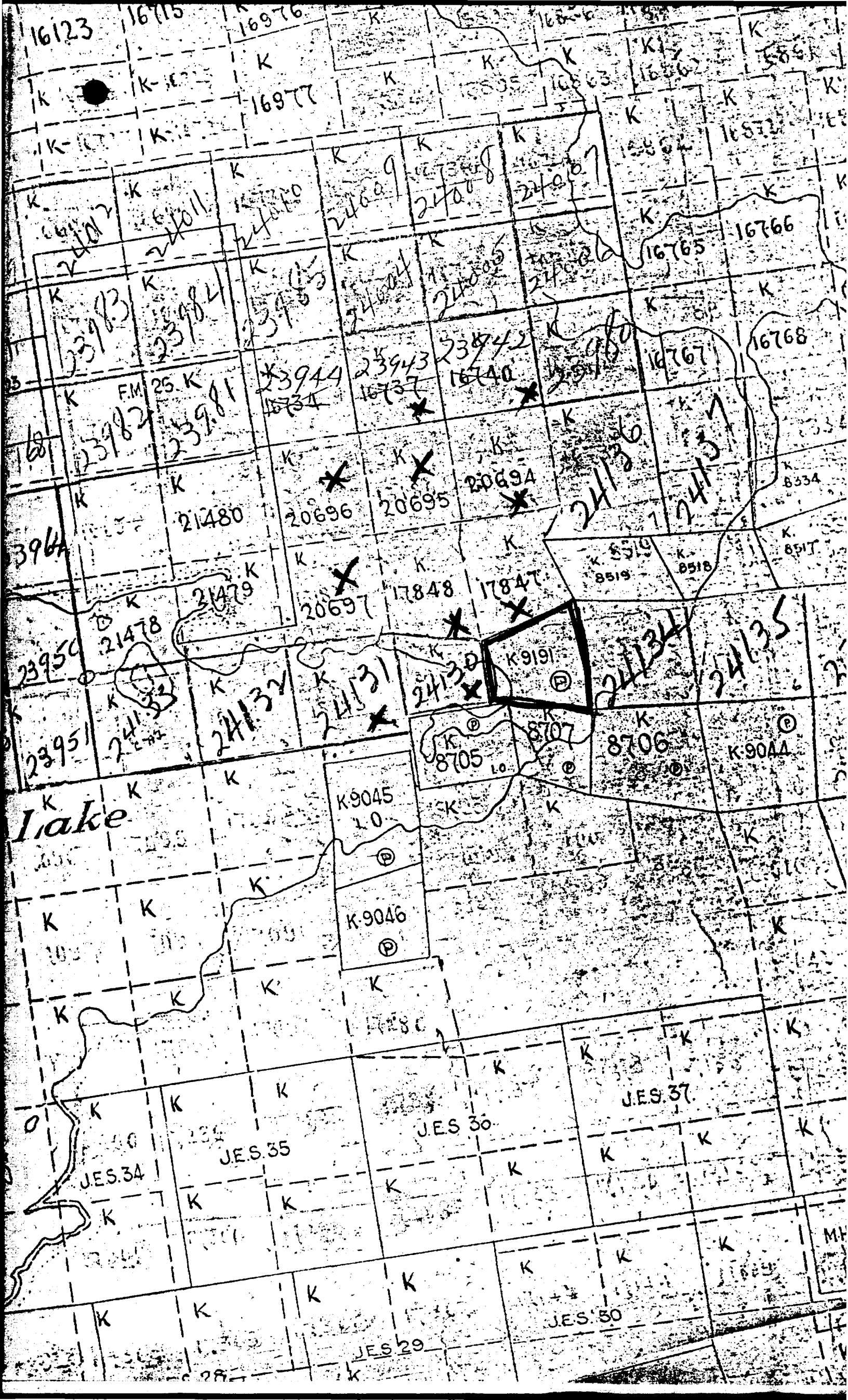
COMPRESSOR STATION
No. 46
Withdrawn From Staking
Northern Ontario
File 154607

EWART

EWART TWP M-1975

Shoal Lake

383454 383453
Crowduck 383452 383451



16123

16715

16976

16866

16863

16862

16861

16977

16863

16862

16861

16860

2407

2408

2409

2410

2411

2412

2413

2414

2415

23983

23984

23985

23986

23987

23988

23989

23990

23991

23982

23981

23944

23943

23942

16740

16765

16766

16767

16768

3964

21480

20696

20695

20694

21136

21135

8334

8519

8518

23950

21478

20697

17848

17847

K 9191

24134

24135

23951

24133

24132

24131

24130

8707

8706

K-9044

K-9045

K-9046

Lake

K-9045

K-9046

K-9047

K-9048

JES. 30

JES. 37

JES. 34

JES. 35

JES. 29

JES. 34

JES. 35

JES. 30

JES. 37

JES. 34

JES. 35

JES. 30

JES. 37

JES. 34

JES. 35

JES. 34

JES. 35

JES. 30

JES. 37

JES. 34

JES. 35

JES. 30

JES. 37

JES. 34

JES. 35

JES. 34

JES. 35

JES. 30

JES. 37

JES. 34

JES. 35

JES. 30

JES. 37

JES. 34

JES. 35

JES. 34

JES. 35

JES. 30

JES. 37

JES. 34

JES. 35

JES. 30

JES. 37

JES. 34

JES. 35

DIAMOND DRILL RECORD

PROPERTY GREEN BAY MINING & EXPLORATION - HIGH LAKE HOLE No. 1
 SHEET NUMBER 1 SECTION FROM _____ TO _____ STARTED Sept. 6/56
 LATITUDE 1003 DATUM _____ COMPLETED Sept. 11/56
 DEPARTURE 150E BEARING E20W ULTIMATE DEPTH 367'
 ELEVATION _____ DIP - 42 degrees PROPOSED DEPTH _____

DEPTH FEET	FORMATION	SAMPLE NO.	FROM	TO	WIDTH	ASSAY VALUES			
0 - 3.7	casing								
3.7 - 14.7	sample H.L. #1 - <i>Cu 0.45%</i> <i>Ag 0.01%</i> prphy. - <i>col. lt. med. gr. it. 37-56 py. & chalice & minor Fe.</i>								
14.7 - 25.	prphy - f.g. greenish - possibly re-crystallized andesite xenolith.								
25 - 38.5	prphy. med. g. greenish								
38.5 - 41.5	sample H.L. #2 - <i>Cu 0.33%</i> prphy. med. g. dark sheared 45 degrees to core. min. fair - <i>py. & chalice - 3%.</i>								
41.5 - 50	prphy. dark green in shear some parts highly siliceous								
51.5 - 54	sample H.L. #4 - <i>Cu 0.14%</i> prphy. lt. col. med. gr. min. poor py. & little chalice								
55.5 - 75	sample H.L. #3 - <i>TRACE</i> rhyolite prphy. min. fair. py & chalice - limonite in jts. & slips								
75 - 78	rhyolite prphy. - thin hard black band 30 degrees to core. min. sil.								
78 - 78.5	andesite - fractured xenolith 45 degrees to core. min. fair - <i>py & chalice.</i>								
78.5 - 93	rhyolite prphy. - fold. planes. - fracturing 30 degrees to core & parallel to core yellow limonite slips - min. little py.								
93 - 98.5	feldspar prphy. light reddish								

NORTHERN MINER FORM 500 REV. 54

DRILLED BY

JACK EDWARDS DRILLING

R. J. Schalle R. T. H. G.

DIAMOND DRILL RECORD

PROPERTY GREEN BAY MINING & EXPLORATION - HIGH LAKE HOLE No. 1

SHEET NUMBER 2 SECTION FROM _____ TO _____ STARTED _____

LATITUDE _____ DATUM _____ COMPLETED _____

DEPARTURE _____ BEARING _____ ULTIMATE DEPTH _____

ELEVATION _____ DIP _____ PROPOSED DEPTH _____

DEPTH FEET	FORMATION	SAMPLE NO.	FROM	TO	WIDTH	ASSAY VALUES			
98.5 - 112.5	feldspar pphy. - grey - phenos 3 m.m. no min. except few joints with fine chalc								
112.5 - 117	feldspar pphy. grey - cr. gr. - f.g. chalc on jnts. 45 degrees to core								
117 - 137	feld. pphy. grey. cr. gr. - few strgs. py & chalc								
137 - 137½	feld. pphy with little pyrite & chalc min.								
137½ - 160	feld. pphy. bluish grey & few large pink X-18. mica.								
160 - 177½	feld. pphy. reddish grey - no min. limonite slip p'll. to core 169-171								
177½ - 185	ryholite pphy. greenish white - little scattered pyrite								
185 - 187½	" " bluish grey & few strgs. of maly.								
187½ - 194	pphy. - light reddish & scattered pyrite								
194 - 225	" " grey & "								
225 - 250	" - grey & reddish - scattered pyrite & chalc. best. min. section 248 to 266½								
250 - 261	" - reddish & grey - more qtz. with little py. min.								
261 - 263½	" - light reddish - little pyrite & chalc. mostly on jts. 30 degrees to core.								

NORTHERN MINER FORM 505 REV./54

DRILLED BY

J. Edwards Drilling

SIGNED

R. H. Schalle

DIAMOND DRILL RECORD

PROPERTY GREEN BAY MINING & EXPLORATION - HIGH LAKE HOLE No. 1
 SHEET NUMBER 3 SECTION FROM _____ TO _____ STARTED _____
 LATITUDE _____ DATUM _____ COMPLETED _____
 DEPARTURE _____ BEARING _____ ULTIMATE DEPTH _____
 ELEVATION _____ DIP _____ PROPOSED DEPTH _____

DEPTH FEET	FORMATION	SAMPLE NO.	FROM	TO	WIDTH	ASSAY VALUES			
263½ - 269½	Sample H.L. #5 - ca. - 0.59% Gold - 0.01 pphy. - greenish - min. fair. py. chalice - 3%								
269½ - 275	sample H.L. #6 - ca. 0.07 Gold - nil qts. feld. pphy - grayish - ex. gr. lgs. I-I.S. felds. ½" reddish. min. poor - scattered py. & chalice.								
275 - 286	qts. feld. pphy. - reddish - cr. gr. with few patches of chalice on fracture planes.								
278½ - 281	sample H.L. #7 Ca. 0.30 py. & chalice min. fair to poor								
286 - 300	qts. feld. pphy. cr. gr. gray - red - patches sulphide								
300 - 332½	qts. feld. pphy. ½" I-I.S. micr. - scattered py. on jts. SO degrees to core. chlorite on jts.								
332½ - 333.7	sample H.L. #8 Ca. 0.26 qts. feld. pphy. gray blue qts. eyes. min. py & chalice - 2%								
333.7 - 367	gray reddish pphy. to granite course I-I.S. of micr. - 1" more qts. min poor.								
367	end of hole								

NORTHERN MINER FORM 295 REV. 54

DRILLED BY

J. Edward Drilling

SIGNED

R. R. Kelly P. E. 19

DIAMOND DRILL RECORD

PROPERTY GREAT BAY MINING & EXPLORATION - HIGH LAKE HOLE No. 2
 SHEET NUMBER 1 SECTION FROM _____ TO _____ STARTED _____
 LATITUDE _____ DATUM _____ COMPLETED Sept. 17/56
 DEPARTURE _____ BEARING _____ ULTIMATE DEPTH 536'
 ELEVATION _____ DIP - 35 degrees PROPOSED DEPTH _____

DEPTH FEET	FORMATION	SAMPLE NO.	FROM	TO	WIDTH	ASSAY VALUES			
0 - 4	casing								
4 - 15	qtz-feld. prphy. - reddish - some 1/2" coarse X-L3 of micro; few spots of chalc & pyrite at 8' depth. fracturing 45 degrees to core. min. poor.								
15 - 50	qtz. feld. prphy. with blue qtz. eyes. min. poor. X-L3 of micro - fracture 45 degrees to core with epidote at 36' depth. 1/8" stringer of chalc across core								
50 - 75	gray & reddish qtz. feld. prphy. fracture 45 degrees to core. some 6" section with a little pyrite & chalc. Sample KL-9 70.5-72.5 (2') - 1.36% Ca. pyr. & chalc 3%								
75 - 100	gray & reddish granite prphy to qtz. felds porphyry fracture 30% to core. min. poor. pyrite & chalc scattered silicious fine grained section at 95 - 98' depth with scattered sulphides on joints.								
100 - 120	porphyry qtz. felds. fine grained light grey color with blue qtz. eyes fracturing 45 degrees to core. min. poor.								
120 - 174	granite porphyry - reddish - fractures 30 degrees to core coarse gr. 1/2 X-L3 of micro min. - poor to all from 161 to 164 min. with pyr. - no chalc.								
174 - 187	feld. porphyry - dark grey - fine gr. no min.								
187 - 190	feld. porphyry - reddish - coarse gr. no min.								
190 - 212	feld. porphyry - light grey - fine gr. no min.								

NORTHERN MINER FORM 205 REV./54

DRILLED BY

J. Edwards Mulling

SIGNED

R. R. Stalley

DIAMOND DRILL RECORD

PROPERTY CRASH BAS MINING & EXPLORATION - HIGH LAKE HOLE No. 2
 SHEET NUMBER 2 SECTION FROM _____ TO _____ STARTED _____
 LATITUDE _____ DATUM _____ COMPLETED _____
 DEPARTURE _____ BEARING _____ ULTIMATE DEPTH _____
 ELEVATION _____ DIP _____ PROPOSED DEPTH _____

DEPTH FEET	FORMATION	SAMPLE NO.	FROM	TO	WIDTH	ASSAY VALUES			
212 - 213	qts. stringer in fine gr. porphy. - no min.								
213 - 218	altered fels. porphyry with 1% pyrite min.								
219	porphyry - andesite contact 60 degrees to core								
219 - 222.0	andesite - altered - sheared 30 degrees to core - fine gr. pyrite min. - 3% & stringers 1/8" of carbonate.								
222.5-225.5	sample H.L. #10 - alt. andesite - fair choice & pyrite - 4% 1.10% cu.								
225.5	contact andesite porphyry								
225.5-232	light grey porphy dyke - 3% sulphide min. - little choice								
232 - 249	sheared andesite 30 degrees to core. little scattered pyrite 1/8" qts. & carb. stringers with shearing.								
249 - 256	porphyry dike - light colored - fine gr. no min.								
256 - 259	qts. porphy & hornblende 2-4% 1/8"								
259 - 278	qts. porphy light colored. fractured 45 degrees to core. little scattered pyrite & min. 1%								

NORTHERN MINER FORM 280, REV. 7/54

DRILLED BY

J. Edwards Drilling

SIGNED

R. Stohler

DIAMOND DRILL RECORD

PROPERTY GREEN BAY MINING & EXPLORATION - BIGE LAKE HOLE No. 8

SHEET NUMBER 5 SECTION FROM _____ TO _____ STARTED _____

LATITUDE _____ DATUM _____ COMPLETED _____

DEPARTURE _____ BEARING _____ ULTIMATE DEPTH _____

ELEVATION _____ DIP _____ PROPOSED DEPTH _____

DEPTH FEET	FORMATION	SAMPLE NO.	FROM	TO	WIDTH	ASSAY VALUES				
278 - 286	andesite - altered - brecciated	278-279	min.	pyrite	A little chalco	-	25	same	at	
	footage 283 for 6"									
286 - 317	andesite - light green - fractured			carb. strgs. & epidote	-	old	narrow	sections		
	of pyrite									
317 - 320	H.L. fl. - 3"	assy	gold	-	trace	pyr. min.	sheared	andesite	&	few narrow qtz. strgs.
320 - 332½	feld. parphy. dark grey	-	fine	grd. & strgs.	epidote	at	324	thin	bands	of pyrite min.
332½ - 336	andesite altered	-	sheared	45 degrees	to	core	-	barren	qtz. strgs.	at 336½ - pyrite only & 1/8" epidote strgs. & carbonates. NOTE - if sample fl. runs - assay this section

NORTHERN MINER FORM 905 REV./54

DRILLED BY

J. E. Edwards Drilling

SIGNED

R. J. Schaller

DIAMOND DRILL RECORD

PROPERTY GREEN BAY MINING & REFINING - HIGH LAKE HOLE No. 3
 SHEET NUMBER 1 SECTION FROM _____ TO _____ STARTED Sept. 19/56
 LATITUDE _____ DATUM _____ COMPLETED 22nd
 DEPARTURE _____ BEARING _____ ULTIMATE DEPTH 364'
 ELEVATION _____ DIP -35 PROPOSED DEPTH _____

DEPTH FEET	FORMATION	SAMPLE NO.	FROM	TO	WIDTH	ASSAY VALUES			
0 - 4	casing								
4 - 50	qtz. felds. porphyry. light grey. 2" micro X-LS some scattered pyrite min.								
50 - 100	same as above								
100 - 150	qtz. feld. porphyry. reddish color 1/2" micro X-LS								
150 - 200	qtz. feld. porphyry reddish color - at footage 176' a 1" qtz. string. with 1/2" band of chalcocite on side								
200 - 256	qtz. feld. porphyry. reddish some chlorite bands 30 degrees to core								
256 - 260 1/2	Sample H.L. #14 - gold-tr. copper-0.11% well min. porphyry (pyrite) (30% sulphide)								
260 1/2 - 290	qtz. Felds. porphyry. no min. joints at 30 and 45 degrees								
290 - 325	andesite contact zone - some 1" bands of scattered pyrite min. 1/2" qtz. string barren.								
325 - 364	andesite - light green - sheared & fractured contact zone altered no min.								
	END								

NORTHERN MINER FORM 299 REV. 75A

DRILLED BY

J. Edwards Stelling

SIGNED

R. K. Chally

DIAMOND DRILL RECORD

PROPERTY GREEN BAY MINING & REFINING - HIGH LAKE HOLE No. 84
 SHEET NUMBER 1 SECTION FROM 0 TO 323 STARTED by old #24 D.M. Sept. 25/66
 LATITUDE _____ DATUM _____ COMPLETED _____
 DEPARTURE _____ BEARING 025E ULTIMATE DEPTH 323
 ELEVATION _____ DIP -40 degree PROPOSED DEPTH _____

DEPTH FEET	FORMATION	SAMPLE NO.	FROM	TO	WIDTH	ASSAY VALUES			
0 - 4	casing								
4 - 85	qtz. felds. porphyry grey colored medium texture								
85 - 171	qtz. felds. porphyry reddish color & 1/2 X-16 of micro								
171 - 171 1/2	qtz. felds. porphyry reddish color & chalco pyrite probably min. 1 1/2 Cu. with good min. - 2"								
171 1/2 - 200	qtz. felds. porphyry. 13° bands altering from red to greyish color. joints 45 degrees to core. no min.								
200 - 250	qtz. felds. porphyry reddish 1/2 X-16 micro. a little scattered pyrite min.								
250 - 323	qtz. felds porphyry reddish & grey color & micro. joints 30 degrees to core no. min. (granite porphyry?)								

NORTHERN MINES FORM 463 REV. 54

DRILLED BY J. Edwards, Aultberg

SIGNED

[Handwritten Signature]

DIAMOND DRILL RECORD

PROPERTY OWENS BAY MINING & EXPLORATION - HIGH LAKE HOLE No. 6
 SHEET NUMBER 1 SECTION FROM _____ TO _____ STARTED Oct. 5/56
 LATITUDE _____ DATUM _____ COMPLETED Oct. 9 night
 DEPARTURE _____ BEARING S. 38 degrees E ULTIMATE DEPTH 383
 ELEVATION _____ DIP - 40 degrees PROPOSED DEPTH _____

DEPTH FEET	FORMATION	SAMPLE NO.	FROM	TO	WIDTH	ASSAY VALUES			
0 - 2 1/2	casing								
2 1/2 - 54	porphyry - quartz & feldspar - light grey medium texture. fracture 60 degrees to core								
54 - 85	andesite. fine grained - few narrow qtz. stringers. no min.								
85 - 95	porphyry qtz. feldspar - no min.								
95 - 150	andesite fine grained shears at 45 degrees to core								
150 - 237 1/2	andesite fine grained few narrow qtz. stringers. no min.								
237 1/2 - 240	sample N.L. #15 - gold-0.33 oz. Copper-0.10% Sheared andesite & pyrite min. fair-poor 8% SiO ₂								
240 - 306	andesite - fine grained. - no min.								
306 - 306.4	chance pyrite 1" band								
306.4 - 383	andesite fine grained & few qtz. stringers 45 degrees to core end - no min.								

NORTHERN MINER FORM 502 REV. 54

DRILLED BY

J. Edwards Drilling

SIGNED

R. Schell

DIAMOND DRILL RECORD

PROPERTY CASSETT BAY MINING & DEVELOPMENT - HIGH LAKE HOLE No. 6
 SHEET NUMBER 1 SECTION FROM _____ TO _____ STARTED Oct. 11/56
 LATITUDE _____ DATUM _____ COMPLETED _____
 DEPARTURE _____ BEARING N 60 degrees E ULTIMATE DEPTH 213'
 ELEVATION _____ DIP - 43 degrees PROPOSED DEPTH _____

DEPTH FEET	FORMATION	SAMPLE NO.	FROM	TO	WIDTH	ASSAY VALUES			
0	- 15 casing								
15	- 65 porphyry - grey - qtz. & feldspar scattered pyrite min. Joint 30 degrees to core. at 62' slip parallel to core. Sample 62-64 slip min. fair. H.L. #18 - gold-nil								
65	-115 same as above								
115	-125 grey qtz. felds. porphyry scattered pyrite min.								
125	-126 porphyry - qtz. felds. - little pyrite								
126	-140 andesite - altered - sheared 30 degrees to core. 1/8" qtz. stringers. few stringers with pyrite min.								
140	-165 andesite - altered fair scattered pyrite & little chalco - fair min. in some short sections e.g. 155'								
165	-175 andesite - sheared 30 degrees to core. 176-177 - pyrite & chalco fair min.								
175	-178 same as above. Sample #18 H.L. copper 1.12% Gold 0.05 oz.								
178	-213 andesite altered & altered jointing 23 degrees to core scattered & banded sulphide pyrite & chalco 25'								
213	end of hole								

NORTHERN MINER FORM 505 REV. 54

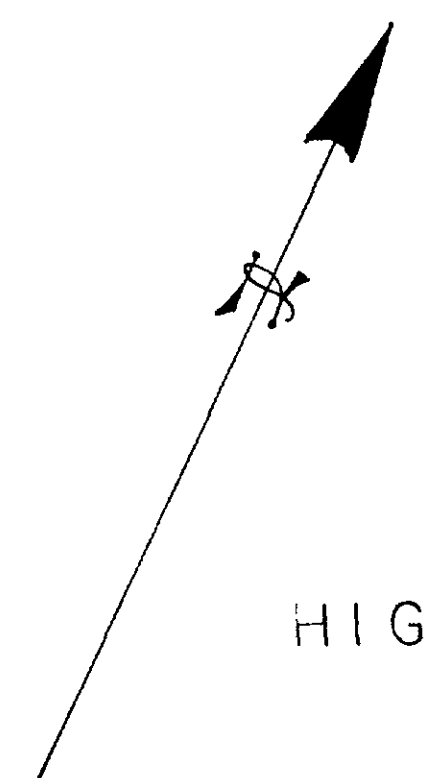
DRILLED BY

J. Edwards Drilling

SIGNED

R. Schaller

2400
2670
62508



HIGH LAKE

BASE LINE

2ND. BASE LINE

D.D.H. 3

D.D.H. 2

D.D.H. 1

D.D.H. 4

D.D.H. 5

DDH. 6

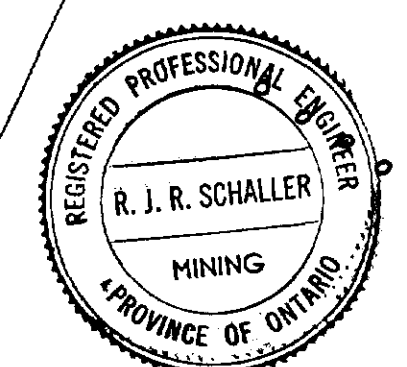
20716
20627
20645

17848

24131

24120

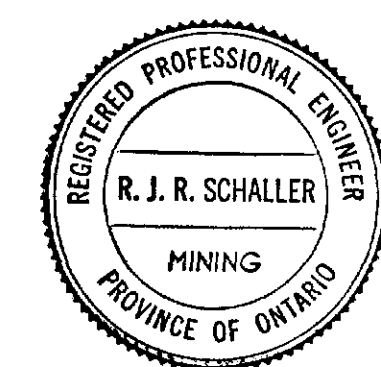
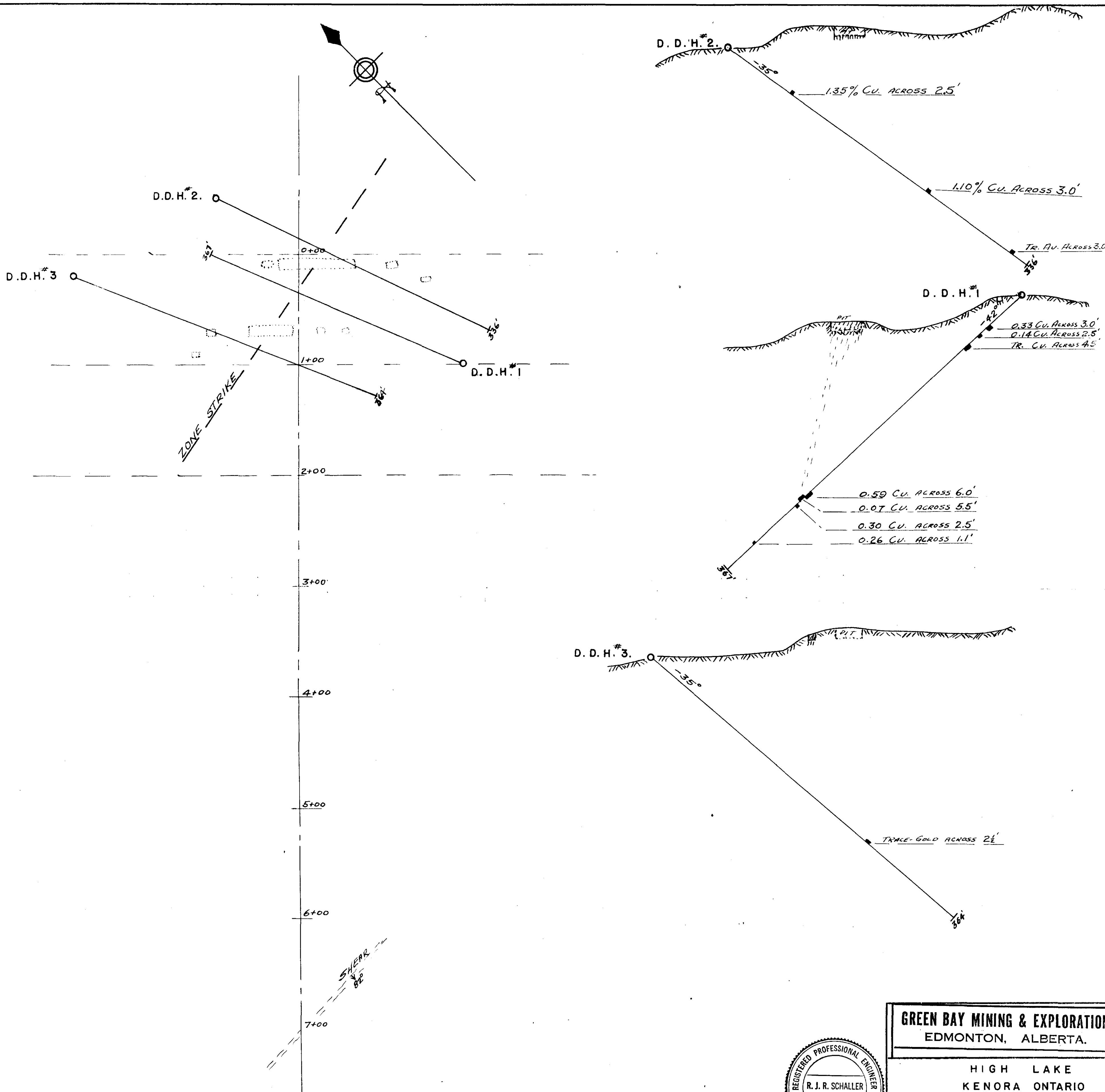
K-9191



GREEN BAY
MINING & EXPLORATION

HIGH LAKE - KENORA, ONT.
PLAN OF
SURFACE & DIAMOND DRILL HOLES

DATE Aug 56
 DRAWN BY APPROVED BY SCALE 1"=200'
 R.J.R.S.



GREEN BAY MINING & EXPLORATION
EDMONTON, ALBERTA.

HIGH LAKE
KENORA ONTARIO
DIAMOND DRILLING
— MAIN SHOWING —

DATE NOV. 56
DRAWN BY APPROVED BY SCALE
R. J. R. SCHALLER

