



52E11NE9066 12 EWART

010

Diamond Drilling

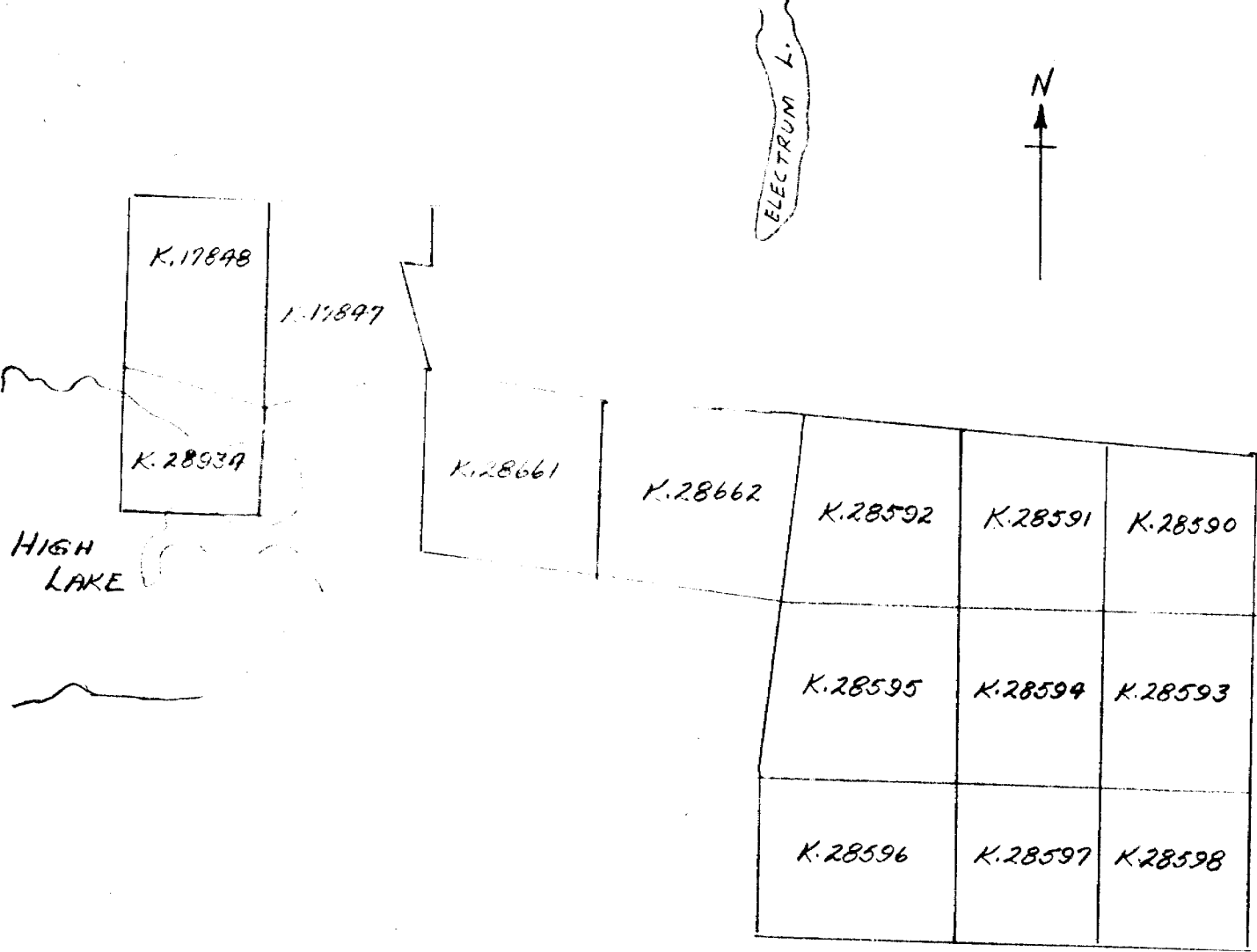
Area Indian Bay (Ewart Twp.)

Report N^o 12

Work performed by: Francoeur Mines

Claim N ^o	Hole N ^o	Footage	Date	Note
K 17847	F19	292'	Oct/58	
	F20	205.3'	Nov/58	
	F22	210'	Nov/58	
K 17848	F21	320'	Nov/58	

Notes:



FRANCOEUR MINES LIMITED
HIGH LAKE CLAIM GROUP

Sketch Showing Claim Grouping
For Work Reports Dated
Nov. 25, 1958.

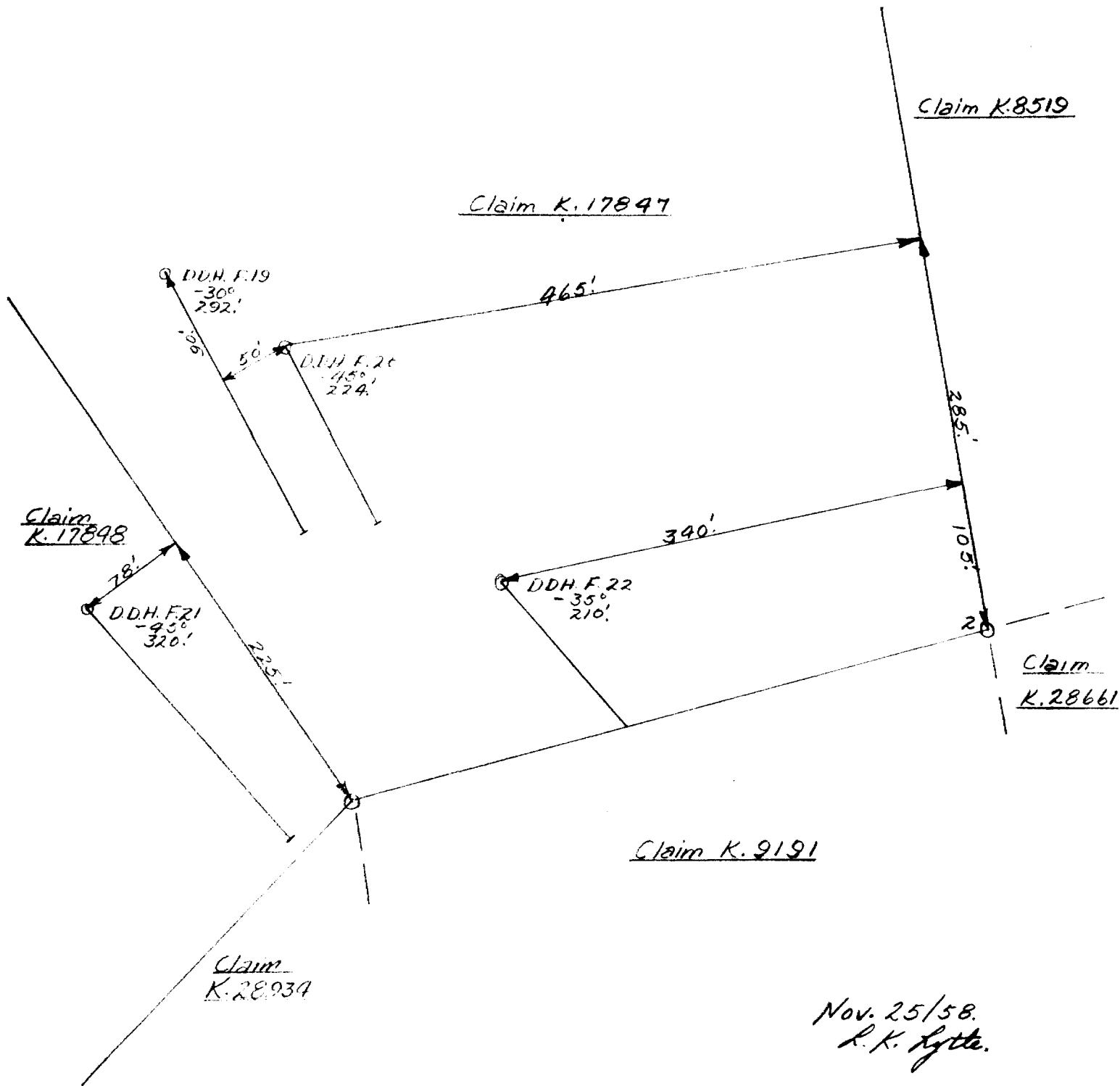
Scale: 20 ch. = 1 in.

Nov. 25/58.
 J.K.H.

FRANCOR MINES LIMITED
HIGH LAKE CLAIM GROUP

PLAN SHOWING LOCATION OF D.D.H.
DRILLED Oct. 28 - Nov. 23/58.

Scale: 1 in. = 100 ft.



Nov. 25/58.
L. K. Lytle.

~~17847~~ 17847
Francoeur Mines Limited

Summary of core log of D.D.H. No. F.19 located as shown on sketch;
drilled, Oct. 28 to Nov. 6, 1958
by Norwescon Dev. Co. of Red Lake, Ont.

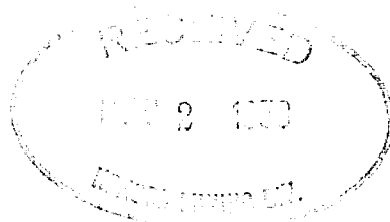
Total depth - 292. ft.
Dip at collar - -30°
Bearing - $S.28^{\circ} E.$ (mag.)

Summary of core log:-

0.0- 3.0 - casing
3.0- 92.5 - Quartz porphyry
92.5-102.5 - Chlorite schist
102.5-109.3 - Greenstone
109.3-114.2 - chlorite schist
114.2-135.5 - Greenstone
135.5-170.2 - Greenstone; in part, chlorite schist
170.2-176.3 - Quartz porphyry
176.3-231.9 - Greenstone
231.9-242.0 - Gray schist
242.0-262.2 - Diorite
262.2-278.4 - Quartz porphyry
278.4-292.0 - Andesite

Core logged by L. K. Lytle, P. Eng.

L. K. Lytle



Francoeur Mines Limited

Summary of core log of D. D. H. No.F.20 located as shown on Sketch;
drilled Nov. 6 to Nov. 12, 1958
by Norweston Dev. Co. of
Red Lake, Ont.

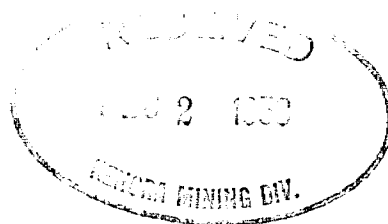
Total depth - 224. ft.
Dip at collar - 45°
Bearing - S. 28° E. (mag.)

Summary of core log:-

0.0- 14.0 - Casing; overburden; sand and gravel.
14.0- 22.8 - Chlorite schist
22.8- 32.9 - Quartz porphyry
32.9- 109.9 - Greenstone
109.9-129.5 - Andesite
129.5-139.0 - Greenstone
139.0-154.5 - Chlorite schist
154.5-168.5 - Andesite
168.5-183.5 - Greenstone
183.5-224.0 - Andesite
185.8-185.9 - Quartz porphyry
205.2-205.3 - Quartz porphyry

Core logged by L. K. Lytle, P. Eng.

L. K. Lytle



~~FRANCOEUR~~

17848

Francoeur Mines Limited

Summary of core log of D. D. H. No. F.21 located as shown on Sketch;
Drilled Nov. 12 to Nov. 21, 1958
by Norweston Dev. Co. of
Red Lake, Ont.

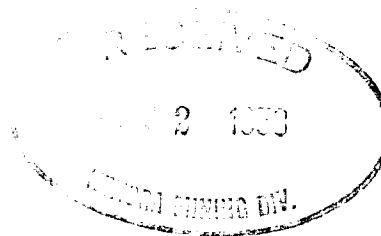
Total depth - 320. ft.
Dip at collar - -45°
Bearing - S. 41° E.

Summary of core log:-

0.0- 3.0 - Casing
3.0-59.8 - Greenstone
59.8-112.0 - Quartz porphyry
112.0-132.0 - Greenstone
132.0-181.6 - Diorite
181.6-320.0 - Quartz porphyry

Core logged by L. K. Lytle, P. Eng.

L. K. Lytle



Francoeur Mines Limited

Summary of core log of D.D.H. No. F.22 located as shown on sketch;
drilled, Nov. 21 to 24, 1958
by Norwescon Dev. Co. of
Red Lake, Ont.

Total depth - 210 ft.
Dip at collar - -35°
Bearing - S.40⁰E. (mag.)

Summary of core log:-

0.0- 3.0 - casing
3.0-148.5 - Greenstone
148.5-189.0 - Diorite
189.0-210.0 - Greenstone

Core logged by L. K. Lytle, P.Eng

L. K. Lytle

