



52E11NE9070 11 EWART

010

Diamond Drilling

Area of INDIAN BAY (Ewart Twp.)

Report NO 11

Work performed by: Purdex Minerals Limited

Claim NO	Hole NO	Footage	Date	Note
K 25131	1-A	151'	Aug/58	✓
	2-A	187'	Aug/58	✓
	3-A	250'	Aug/58	✓
	4-A	277'	Aug/58	✓
	5-A	313'	Aug/58	✓
	6-A	321'	Aug/58	✓
	7-A	351'	Aug/58	✓
	9-A	441'	Aug/58	✓
	15-A	323'	Sept/58	✓
	16-A	402'	Sept/58	✓
	17-A	473'	Sept/58	✓
	28-A	177'	Oct/58	✓
	29-A	215'	Oct/58	✓
	K 25130	8-A	184'	Aug/58
13-A		365'	Sept/58	✓
14-A		288'	Sept/58	✓

10A

18, 19, 20,

Notes:

Diamond Drilling

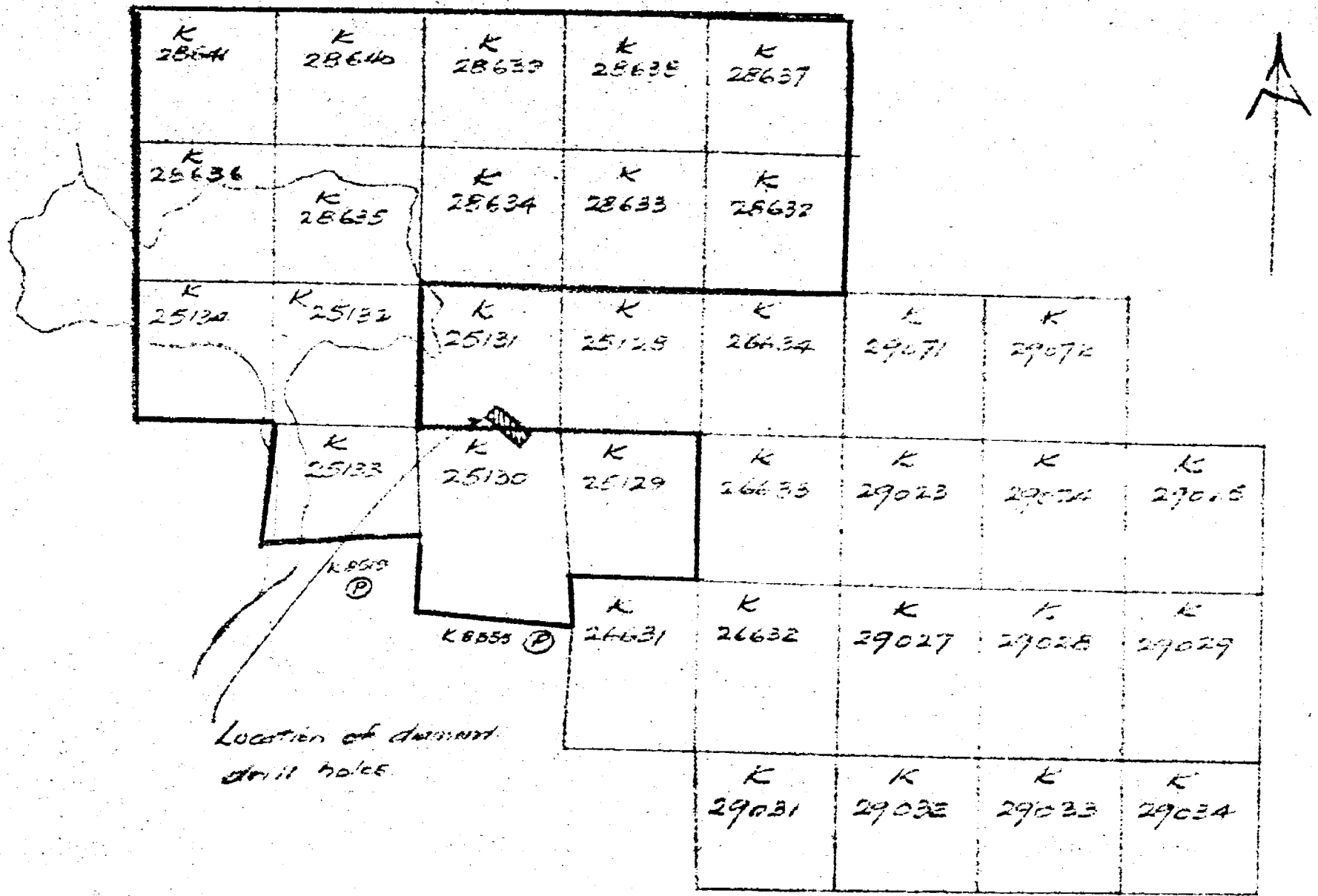
Area of INDIAN BAY (Eward Twp.)

Report NO 11

Work performed by:

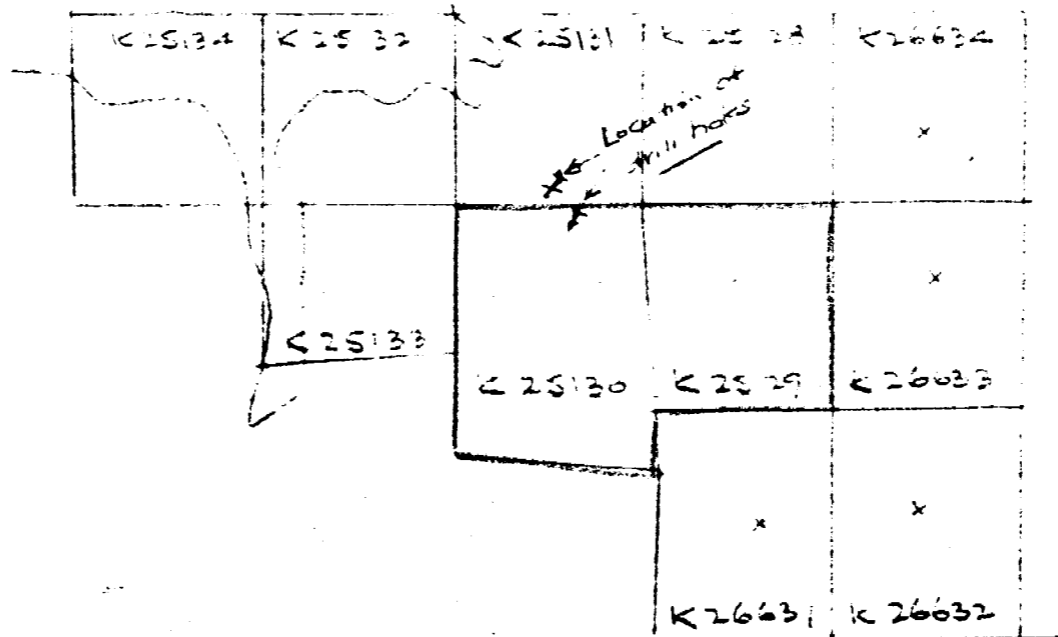
Claim NO	Hole NO	Footage	Date	Note
K 25130	23-A	120'	Oct/58	✓
	24-A	111'	Oct/58	✓
	25-A	145'	Oct/58	✓
	26-A	115'	Oct/58	✓
	27-A	127'	Oct/58	✓

Notes:



Plan showing
 CLAIM BLOCKS
 EMBE - TRUMP
 Scale 1:25000 Jan 58

Electric Lake

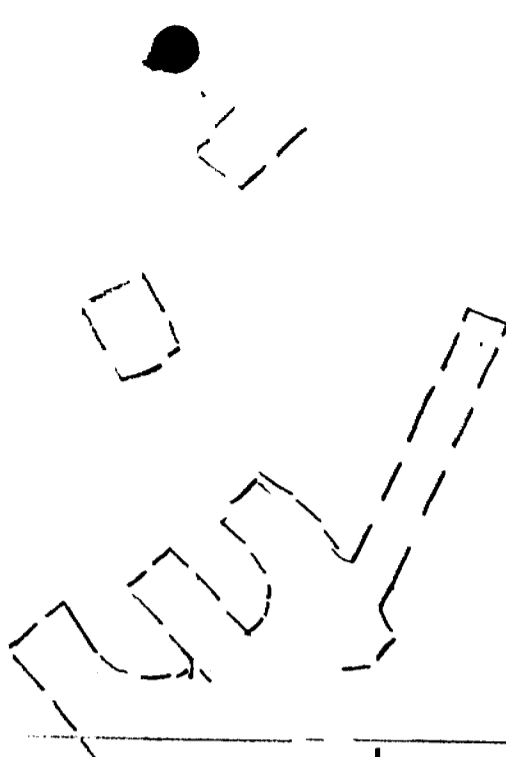


PURDEX MINERALS LTD.
EWART TOWN
PLAN SHOWING CLAIM GROUPS

Scale. 1" = 1/2 mi

AUG / 58

W.N.T.

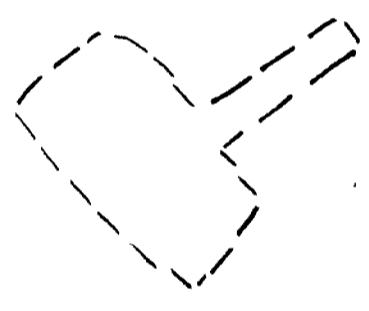


K 25131

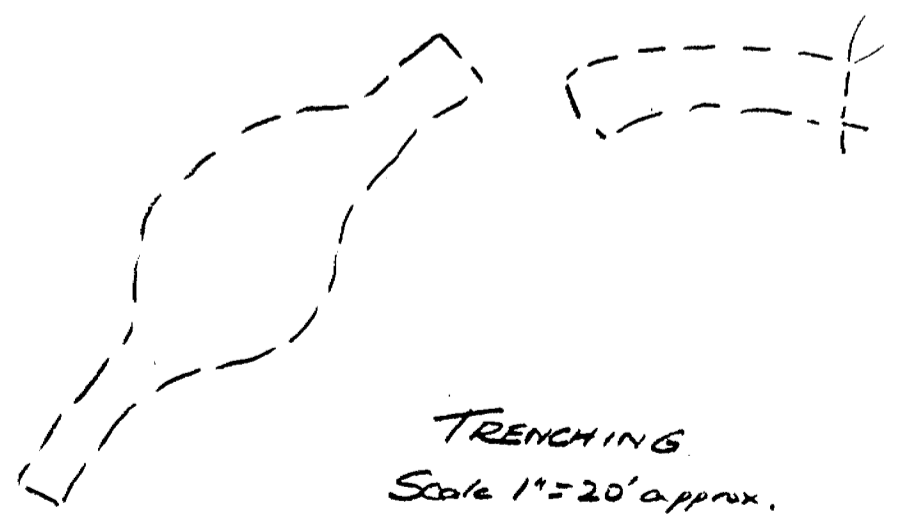
660' to
#2 Part of
K25131



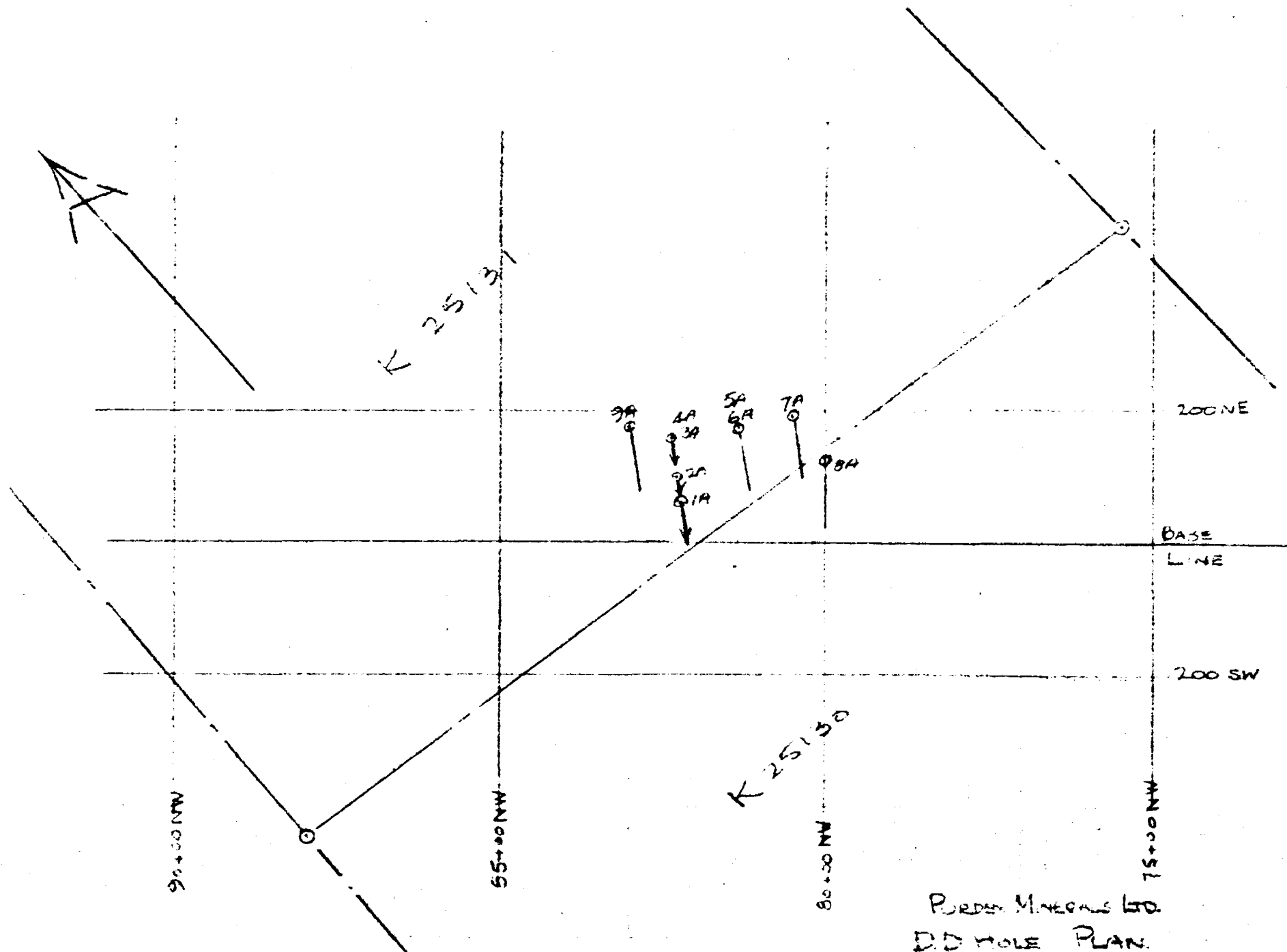
K 25130



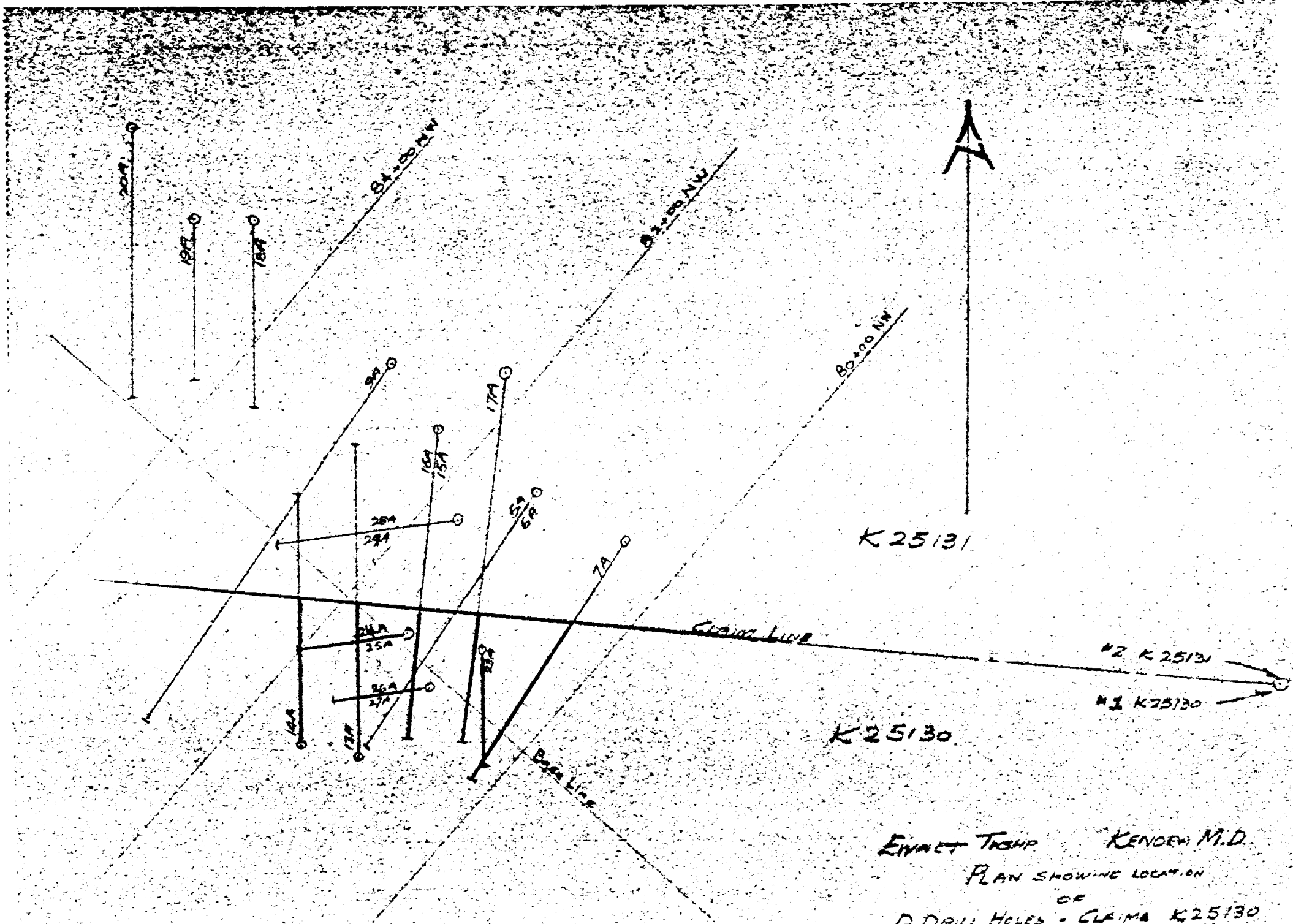
RECEIVED
APR 1 1958
GENERAL INVESTIGATIONS DIV.



TRENCHING
Scale 1"=20' approx.



PURDIE MINERALS LTD.
 D.D. HOLE PLAN.
 Electrum Lake.
 Ewalet Twp. Q.
 Aug/58.
 Scale 1" = 200'
 WNT.



K 25131

K 25130

#2 K 25131

#1 K 25130

EMMET TOWNSHIP KENDON M.D.

PLAN SHOWING LOCATION

OF

D DRILL HOLES - CLAIMS K25130

AND K 25131

Scale 1" = 100'

Jan 1959

M.T.

HOLE NO. 1A

BEARING S35W

DIP COLL. 50°

TOT. DEPTH 151 CORE SIZE EXT

DIAMOND DRILL LOG

PURDEX MINERALS LTD.

25128

PROPERTY. Electrum Lake, Ont

STARTED Aug 1.

COMPLETED Aug 2/58

HOLE NO. 1A

PAGE NO. 1 OF 1

LOCATION B220 NW
59 NE

FROM	TO	DESCRIPTION	FOLIATION To Core Lth	SAMPLE NO.	FROM	TO	CORE R'C'D	Core Length	ASSAYS	REMARKS
0	3	Quartz Porphyry								
3	21	Andesite								
21	27 1/2	Chlorite Schist with Qz stringers	40							
27 1/2	35	Blue Quartz well mineralized								
35	64	Chlorite Schist with Qz stringers	40-60							
64	91	Blue Quartz well mineralized								
91	107	Chlorite Schist with Qz stringers	Contorted.							
107	110	Blue Quartz well mineralized								
110	112	Chlorite Schist & Qz (50% of each)	Contorted.							
112	120	Fault Zone								
120	151	Andesite								

DRILLED BY. Norwegian Development Ltd

SIGNED BY. L.M. Taylor

HOLE NO. 2A

BEARING S35W

DIP COLL. 50°

TOT. DEPTH 187 CORE SIZE EXT

DIAMOND DRILL LOG

Riedex Minerals Ltd

PROPERTY. Electrum Lake, Ont.

STARTED Aug 2/58

COMPLETED Aug 5/58

HOLE NO. 2A

PAGE NO. 1 OF 1

LOCATION 8224 NW
94 NE

FROM	TO	DESCRIPTION	FOLIATION To Core Lth	SAMPLE NO.	FROM	TO	CORE R'C'D	Core Length	ASSAYS				REMARKS
0	41	Quartz Porphyry											
41	52 1/2	Andesite, some shearing.	60										
52 1/2	76	Blue Quartz, well mineralized											
76	81 1/2	Chlorite Schist	40										
81 1/2	84	Blue Qtz, well mineralized											
84	110 1/2	Sericite Schist with Qtz stringers	45										
110 1/2	117	Blue Qtz well mineralized											
117	127	Chlorite Schist	45-60										
127	129	Blue Qtz											
129	136	Andesite some shearing.	50										
136	145	Chlorite Schist											
145	148	Qtz, well mineralized											
148	157	Sericite Schist with Qtz stringers	Contorted										
157	186	Andesite											

DRILLED BY. Norwescan Development Ltd.

SIGNED BY. W. Taylor

HOLE NO. 4A

BEARING S35W

DIP COLL. 65

TOT. DEPTH 277 CORE SIZE EXT

DIAMOND DRILL LOG

Purdex Minerals Ltd.

PROPERTY. Electrum Lake, Ont.

STARTED Aug. 10.

COMPLETED Aug. 13 1958

HOLE NO. 4A

PAGE NO. 1 OF 1

LOCATION 8235 NW
160 NE

FROM	TO	DESCRIPTION	FOLIATION To Core Lth	SAMPLE NO.	FROM	TO	CORE R'C'D	Core Length	ASSAYS				REMARKS	
0	151	Quartz Porphyry												
151	164	Sericite Schist with Qtz stringers	40											
164	190	Andesite												
190	197	Blue Qtz, well mineralized.												
197	208	Andesite												
208	210	Qtz blue, well mineralized												
210	213	Andesite												
213	220	Blue Quartz, well mineralized												
220	269	Andesite with some shearing.												
269	277	Quartz Porphyry												

DRILLED BY. Norwestcon Development Ltd

SIGNED BY. *W. Taylor*

DIAMOND DRILL LOG (Summary)

Hole No. 5 A
Bearing. S 35 W
Dip Collar. 40
Location. 8135 NW K 25131 & K25130
175 NE
Started. Aug. 13.
Completed. Aug. 16, 1958
Core size. EXT
Total depth. 313
Drilled by. Norwescon Development Ltd.
Red Lake, Ontario.

0-5 Casing.
5-176 Quartz Porphyry.
176-187 Quartz, white, well mineralized.
187-195 Chlorite Schist with Qtz Porp from 190-193.
195-236 Quartz Porphyry.
236-313 Andesite with considerable shearing
to 250'



Logged by. W.N. Taylor. P. Eng.

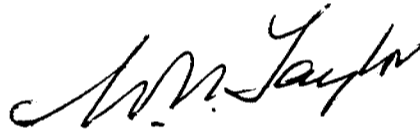
Note: 150' to K25131 Group
150-313 or 163' to K25130 group.

Note; Collar Location -645'W of #1-K25130
108'N " "

DIAMOND DRILL LOG. (Summary)

Hole No. 6 A
Bearing S 35 W
Dip Collar. 65
Location. 8155 NW 0*235 K25131
175 NE 235-321 K 25130
Started AUG. 16.
Completed " 19.1958.
Core size. EXT
Total depth. 321
Drilled by; Norwescon Development Ltd.
Red Lake, Ont.

0- 4 Casing.
4-180 Quartz Porphyry, Fine grained.
180-182 Chlorite Schist.
182-190 Quartz Porphyry.
190-192 Quartz with heavy Tourmaline.
192-217 Quartz Porphyry, some quartz stringers.
217-219 Mica Schist.
219-321 Quartz Porphyry.



Logged by: W.N. Taylor, P. Eng.

NOTE 0-235 or 235' on K25131 group.
235-321 or 86' on K25130 group.

Note; Collar location -645'W of #1-K25130
108'N " " "

DIAMOND DRILL LOG. (summary)

Hole No. 7 A
Bearing. S 35 W
Dip Collar. 50
Location. 8052 NW 0-120 K25131
194 NE 120-351 K25130
Started. Aug. 19.
Completed. " 22.1958.
Core size. EXT
Total depth. 351
Drilled by; Norwescon Development Ltd.
Red Lake, Ont.

0- 4 Casing.
4-187 Quartz Porphyry.
187-189 Chlorite Schist.
189-193 Quartz Porphyry, some quartz.
193-196 Mica Schist.
196-251 Quartz Porphyry.
251-276 Chlorite Schist.
276-351 Andesite.


Logged by; W.N. Taylor. P. Eng.

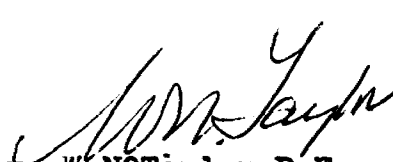
NOTE. 0-120 or 120' on K25131 group.
120-351 or 231' on K25130 group.

Note; Collar location -565'W of #1-K25130
70'N " "

DIAMOND DRILL LOG. (Summary)

Hole No. 9 A
Bearing. S 35 W
Dip collar. 40
Location. 8300 NW 0-285 K25131
175 NE 285-441 K25130
Started. Aug. 24.
Completed. " 27, 1958.
Core Size. EXT
Total Depth. 441
Drilled by; Norwescon Development Ltd.
Red Lake, Ont.

0- 10 Casing.
10-114 Quartz Porphyry.
114-174 Andesite with sections of Mica Schist.
174-176 Quartz, blue, well mineralized.
176-224 Andesite, considerable sulphides.
224-228 Quartz Porphyry.
228-302 Andesite.
302-313 Quartz Porphyry.
313-426 Andesite.
426-441 Quartz Porphyry.


Logged by; W.N. Taylor. P. Eng.

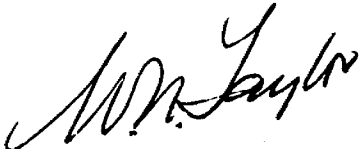
NOTE. 0-285 or 285' on K25131 group.
285-441 or 156' on K25130 group.

Note; Collar location -778'W of #1-K24130
205'N " "

DIAMOND DRILL LOG (Summary)

Hole No. 13 A
Bearing. North
Dip Collar. 45
Location 8100 NW 0-180 K25130 -#1775'W
95 SW 130'S
Started Sept. 7.
Completed " 10.1958.
Core Size EXT
Total depth 365
Drilled by; Norwescon Development Ltd.
Red Lake, Ontario.

0- 4 Casing.
4- 53 Andesite.
53- 54 Quartz.
54-101 Andesite.
101-107 Chlorite Schist.
107-108 Quartz Porphyry.
118-136 Chlorite Schist.
136-139 Quartz Porphyry.
139-141 Mica Chlorite Schist.
141-234 Quartz Porphyry.
234-255 Chlorite Schist.
255-273 Andesite.
273-278 Sediments, grey, cherty.
278-365 Andesite, some black cherty sections.


Logged by; W.N. Taylor .P.Eng.

DIAMOND DRILL LOG. (Summary)

Hole No. 14 A
Bearing. North
Dip Collar. 45
Location. 8145 NW 0-160 K25130-#1-825'W
120 SE 125'S
Started Sept. 10.
Completed " 12.1958.
Cone Size EXT
Total Depth 288
Drilled by; Norwescon Development Ltd.
Red Lake, Ontario.

0- 6 Casing.
6- 67 Andesite.
67-76 Black Chert.
76-217 Andesite.
217-228 Chlorite Schist.
228-235 Quartz Porphyry.
235-239 Andesite, sheared,
239-251 Quartz Porphyry.
251-265 Andesite.
265-288 Black Chert.

Logged by; W.N. Taylor. P. Eng.

W.N. Taylor

DIAMOND DRILL LOG. (Summary)

Hole No. 15 A
Bearing. S 6 W
Dip Collar. 40
Location. 8235 NW 0-195 K25131
161 NE 195-323 K25130
Started. Sept. 13.
Completed. " 15, 1958.
Core Size. EXT
Total Depth. 323
Drilled by; Norwescon Development Ltd.
Red Lake, Ontario.

0- 7 Casing.
7-129 Quartz Porphyry.
129-160 Quartz with Mica Schist containing quartz
stringers from 137-150.
160-213 Quartz Porphyry, some quartz stringers.
213-216 Chlorite Schist.
216-252 Quartz Porphyry.
252-267 Andesite.
267-273 Quartz Porphyry.
273-323 Andesite with some cherty sections.

Logged By; W.N. Taylor. P. Eng.



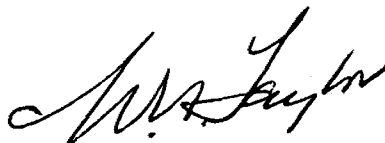
NOTE: 0-195 or 195' on K25131 group.
195-323 or 128' on K25130 group.

Note; Collar location -743'W of #1-K25130
150'N " "

DIAMOND DRILL LOG. (Summary)

Hole No. 16 A
Bearing. S 6 W
Dip Collar. 60
Location. 8235 NE 0-300 on K25131
161 NW 300-402 K25130
Started. Sept. 15.
Completed. " 19, 1958.
Core size. EXT
Total depth. 402
Drilled by; Norwescon Development Ltd.
Red Lake, Ontario.

0- 4 Casing.
4-152 Quartz Porphyry.
152-171 Chlorite Mica Schist with quartz stringers
to 156 feet.
171-330 Quartz Porphyry.
330-336 Quartz, white to blue, well mineralized.
336-354 Quartz Porphyry.
354-363 Quartz, blue, well mineralized.
363-368 Quartz Porphyry.
368-380 Mica Chlorite Schist.
380-384 Quartz Porphyry.
384-402 Mica Chlorite Schist.



Logged by; W.N. Taylor. P. Eng.

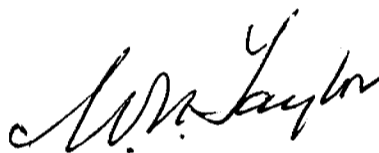
NOTE: 0-300 or 300' on K25131 group.
300-402 or 102' on K25130 group.

Note: Collar location - 743' W of #1-K25130
150' N " "

DIAMOND DRILL LOG. (Summary)

Hole No. 17A
Bearing. S 6W
Dip Collar. 55
Location. 8224 NW 0-325 on K25131
230 NE 325-473 on K25130
Started. Sept. 20.
Completed. " 26, 1958.
Core size. EXT
Total depth. 473
Drilled by; Norwescon Development Ltd.
Red Lake, Ont.

0- 2 Casing.
2-441 Quartz Porphyry.
441-473 Greenstone, lightly sheared.



Logged By; L.K. Lytle. P. Eng.

NOTE: 0-325 or 325' on K25131 group.
325-473 or 148' on K25130 group.

Note: Collar Location- 680'W of #1-K25130
205'N " "

DAIMOND DRILL LOG. (Summary)

Hole No. 23 A
Bearing. South.
Dip Collar. 40
Location. 8083 NW K 25130-#1-680'W
43 NE 30'S
Started. Oct. 16.
Completed. " 17, 1958.
Core Size. EXT
Total Depth. 120
Drilled by; Norwescon Development Ltd.
Red Lake, Ontario.

0- 10 Casing.
10- 83 Quartz Porphyry.
83- 86m Chlorite Schist and Quartz.
86- 90 Quartz Porphyry.
90-103 Chlorite Schist.
103 -120 Greenstone.

Logged by; L.K. Lytle. P. Eng.

W. Taylor

DIAMOND DRILL LOG. (Summary)

Hole No. 24A
Bearing. S 83 W
Dip Collar 30
Location. 8140 NW K25130 -#1-743'W
12 NE 20'S
Started. Oct. 17.
Completed. " 19. 1958.
Core Size. EXT
Total Depth. 111
Drilled by; Norwescon Development Ltd.
Red Lake, Ontario.

0- 2 Casing.
2-10 Quartz with heavy tourmaline.
10-62 Quartz Porphyry.
62-97 Greenstone.
97-111 Andesite.

Logged by; L.K. Lytle. P. Eng.

L.K. Lytle

DIAMOND DRILL LOG. (Summary)

Hole No. 25 A
Bearing. S 85 W
Dip Collar. 50
Location. 8140 NW K25150-#1-743W
12 NE 20'S
Started. Oct. 19, 1958
Completed. " 20, 1958.
Core size. EXT
Total depth. 145
Drilled by; Norwescon Development Ltd.
Red Lake. Ontario.

0- 1 Casing.
1- 6 Quartz with tourmaline.
6- 82 Quartz Porphyry.
82-115 Greenstone, highly altered.
115-145 Greenstone.

Logged by; L.K. Lytle. P. Eng.

L.K. Lytle

DIAMOND DRILL LOG. (Summary)

Hole No. 26 A
Bearing. S 83 W
Dip Collar. 40
Location. 8094 NW K25130 -#1-720'W
115 ~~SW~~ 77'S
Started. Oct. 20.
Completed. " 21, 1958.
Core Size EXT
Total Depth. 115
Drilled by; Norwescon Development Ltd.
Red Lake, Ontario.

0- 4 Casing.
4- 70 Quartz Porphyry, some chlorite schist.
70- 82 Chlorite Schist.
82-115 Greenstone.

Logged by; L.K. Lytle. P. Eng.

L.K. Lytle

DIAMOND DRILL LOG. (Summary)

Hole NO. 27 A
Bearing. S 83 W
Dip Collar. 65
Location. 8091 NW K25130-#1 -720'W
7 SW 77's
Started. Oct. 21.
Completed. " 22, 1958.
Core Size. MXT.
Total depth. 127
Drilled by; Norwescon Development Ltd.
Red Lake, Ontario.

0- 4 Casing.
4-49 Quartz Porphyry.
49-51 Chlorite Schist.
51-55 Quartz Porphyry.
55-57 Chlorite Schist.
57-100 Quartz Porphyry.
100-108 Chlorite ~~Porphyry~~ Schist.
108-127 Greenstone.

Logged by; L.K. Lytle. P. Eng.



W-S-R

K 25131
EWART TWP

DIAMOND DRILL LOG. (Summary)

Hole No. 28 A
Bearing. S 83 W
Dip Collar. 30
Location 8172 NW K25131-#2-710'W
110 NE 75' N
Started. Oct. 22.
Completed. " 24. 1958.
Core size. EXT
Total depth. 177
Drilled by; Norwescon Development Ltd.
Red Lake, Ontario.

0- 4 Casing.
4- 67 Quartz Porphyry.
67- 71 Chlorite Schist.
71-133 Greenstone, well sheared.
133-158 Greenstone, fairly massive.
158-177 Andesite.

Logged by; L.K. Lytle. P. Eng.



DIAMOND DRILL LOG. (Summary)

Hole No. 29 A
Bearing. S 83 W
Dip Collar. 70
Location. 8170 NW K25131-#2-710'W
112 NE 75'N
Started. Oct. 25.
Completed. " 28, 1958.
Core size. EXT
Total depth. 215
Drilled by; Norwescon Development Ltd.
Red Lake, Ontario.

0- 2 Casing.
2-106 Quartz Porphyry.
106 -127 Chlorite Schist, some quartz.
127-132 Quartz.
132-139 Chlorite Schist.
139-167 Quartz.
167-175 Greenstone.
175-182 Quartz.
182-215 Greenstone.

Logged by; L.K. Lytle. P. Eng.

