



52F03SW0013 18 KAIARSKONS LAKE

010

AREA OF KAIARSKONS LAKE REPORT #18

This file contains work performed by Freeport Cdn. Expl.
on claims:

K. 269322

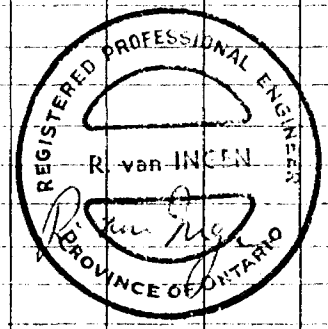
Hole #8

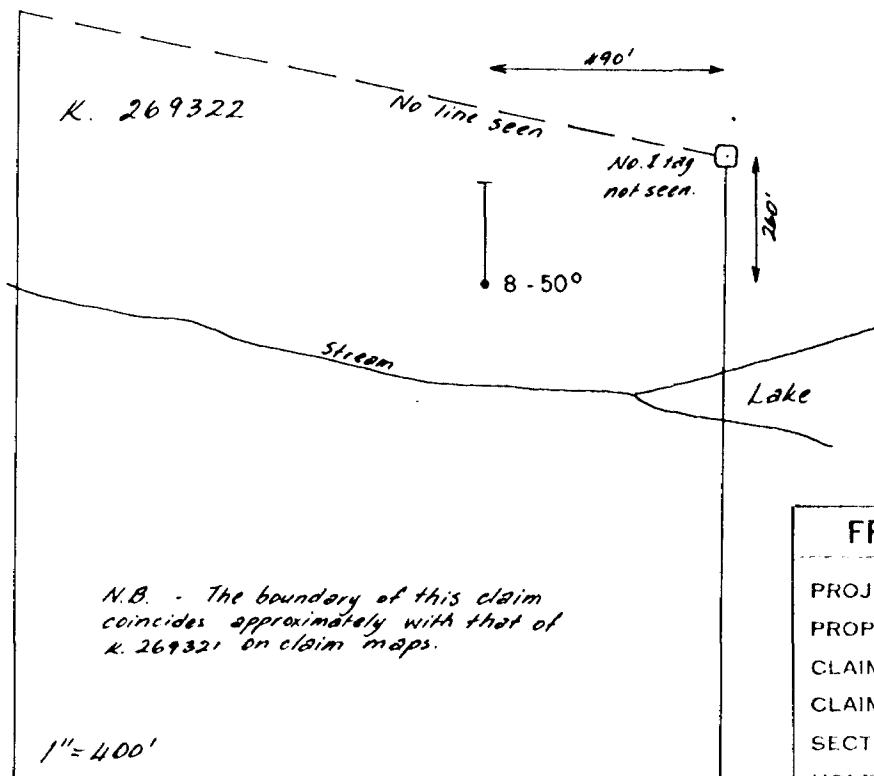
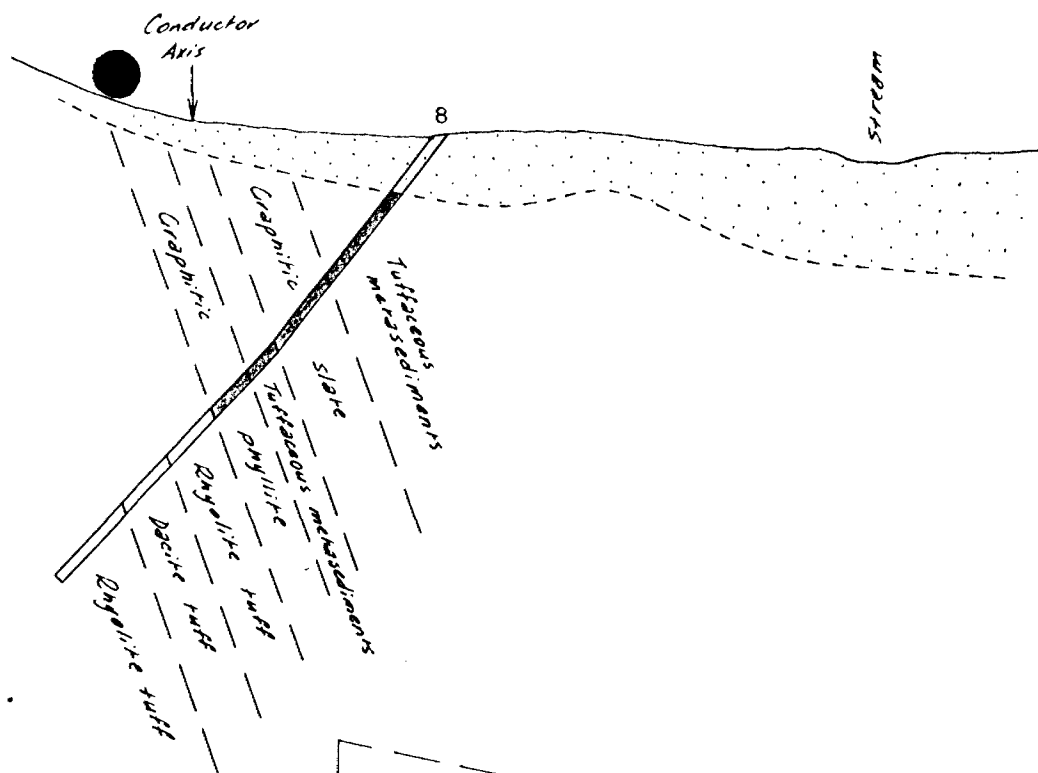
March 1971

Area 1

FREPORT CANADIAN EXPLORATION COMPANY			PROPERTY	Kafarskone Lake Claim Sheet Honora Lining Division		NTS
LOCAT	Stony Lake	CLAIM	2-265322	AZIMUTH	0° Az.	TESTS
LOGGED	WV	LATITUDE	1 160 4 00 N	DIP	50°	45° at 303'
STARTED	March 9, 1971	DEPARTURE	14 4 00 N	DEPTH	303'	
COMPLETED	March 11, 1971	ELEVATION		CORE	AA Pipeline	
Continental Diamond Drilling Company, Rouyn, Quebec						
				FROM	TO	PP

FROM	TO	DESCRIPTION	SAMPLE	FROM	TO	C.L.	% CU	% ZN	Ag
0	43	Casing							
43	93	Medium-to-light grey, fine indistinctly bedded, fine-grained tuffaceous metasediments. Bedding and schistosity at 60° to core axis. 24' missing at 90°.		93	104		1100	650	2.5
				121	124		155	1000	1.5
				137	138		35	60	1.0
93	136	Black graphitic slaty metasediments. Fine pyrite (2%) bands + brown "limonite" 94-104, 118-119, 121-124. 6' core missing at 104'. 1' " " " " 107'. 2' " " " " 111'. 4' " " " " 119'. 1' " " " " 131'.							
136	142.5	Light grey tuffaceous metasediments. 50% pyrite 137-138.							
142.5	152.5	Light grey/light green/medium grey felsic tuffs at 60° to core axis.							
152.5	154.5	Medium-to-dark grey meta-argillite.							
154.5	182	Black phyllitic graphitic meta-argillite. 2.5' missing at 176. 2.0' missing at 182.							
182	215	rhyolite tuff, fine grained, fine indistinct bedding. Grey (siliceous) and creamy (sericitic). 1' missing at 193', 1' missing at 212'.							
215	250	Medium greenish-grey, fine-grained dacitic tuff mainly thick (1') bedded, occasionally thin 1/10" bedded.							
250	303	rhyolite tuff, creamy-to-light grey, thick-to-thin bedded (25° to 90° to core axis) massive-to-schistose.							
End of Hole									





N.B. - The boundary of this claim coincides approximately with that of K. 269321 on claim maps.

1" = 400'



FREERPORT CANADIAN EXPLORATION COMPANY

PROJECT - AREA I
 PROPERTY - GRID 7
 CLAIM SHEET - KAIARSKONS LAKE
 CLAIM No. - K. 269322
 SECTION - 160 + 00E
 HOLE No. - 8

SCALE 1" = 100' DATE APR. 1971