



52F04NE0028 2.5760 BROOKS LAKE

010

## SAMPLING AND ASSAY RESULTS

A total of 63 samples were taken from Wensley and Millree options. Sample types were as follows: nine grab, thirty-seven chip, and seventeen channel.

Twenty samples were assayed for gold and silver, and one sample for gold, silver and molybdenum. Remaining forty-two samples were assayed for gold, silver, copper and molybdenum.

Attached to this section in tabulated form are Sample and Assay Record Sheets showing sample number, sample type, width of sample, description and location of sample along with assay values. Signed assay certificates are included in this section.

Only assay results for gold are plotted on plans and longitudinal sections.

Assaying was carried out by Acme Analytical Laboratories Ltd., 852 E. Hastings St., Vancouver, B.C. Samples were delivered from job site by pick-up to Kenora and from Kenora to Vancouver by Reimer Transport Ltd.

### Assay Methods

Gold and silver samples were assayed by fire assaying method. Silver checked by atomic absorption method.

Atomic absorption method was used to obtain assay results for copper and molybdenum.

SAMPLE AND ASSAY RECORD SHEET

PROPERTY WICKS LAKE

DATE FEB. 14/84 PAGE NO. 1

SAMPLE NO.	T	WIDTH OF SAMPLE	DESCRIPTION		ASSAY				
					Au OZ./TON	Ag OZ./TON	Pb	Cu	
88101	Δ	0.20 FT.	1945 TRENCH #9 -	WENSLEY N°3 VEIN	QTZ. VEIN	0.630	1.15		
88102	Δ	2.0 FT.	1945 TRENCH #9 -	WENSLEY N°3 VEIN	FOOT WALL QTZ. VEIN	0.007	0.03		
88103	Δ	0.8 FT.	1945 TRENCH #9 -	WENSLEY N°3 VEIN	HANGING WALL QTZ. VEIN	0.033	0.09		
88104	Δ	0.25 FT.	1983 TRENCH 83-1-	WENSLEY N°3 VEIN	QTZ. VEIN	4.050	5.41		
88105	Δ	1.0 FT.	1983 TRENCH 83-1	WENSLEY N°3 VEIN	HANGING WALL	0.054	0.11		
88106	Δ	1.3 FT.	1983 TRENCH 83-1	WENSLEY N°3 VEIN	WALL ROCK	0.005	0.01		
88107	Δ	1.2 FT.	1983 TRENCH 83-1	WENSLEY N°3 VEIN	WALL ROCK	0.004	0.09		
88108	Δ	0.5 FT.	DRIFT FACE #3	WENSLEY N°3 VEIN	QTZ. VEIN	0.660	0.92		
88109	Δ	1.5 FT.	DRIFT FACE #3	WENSLEY N°3 VEIN	HANGING WALL OF VEIN	0.008	0.03		
88110	Δ	2.3 FT.	DRIFT FACE #3	WENSLEY N°3 VEIN	FOOT WALL OF VEIN	0.003	0.04		
88111	Δ	0.03 FT.	DRIFT FACE #3	WENSLEY N°3 VEIN	QTZ. STRINGER	0.150	0.09		
88112	Δ	2.0 FT.	DRIFT FACE #3	WENSLEY N°3 VEIN	WALL ROCK	0.002	0.05		
88113	*		DRIFT FACE COBBED VEIN	WENSLEY N°3 VEIN	QTZ. VEIN	1.610	1.69		
88114	*		DRIFT FACE	WENSLEY N°3 VEIN	FOOT WALL QTZ. VEIN	0.075	0.09		
88115	Δ	0.5 FT.	DRIFT FACE #2	WENSLEY N°3 VEIN	QTZ. VEIN	3.960	5.88		
88116	Δ	3.0 FT.	DRIFT FACE #2	WENSLEY N°3 VEIN	FOOT WALL OF VEIN	0.039	0.05		
88117	Δ	0.04 FT.	DRIFT FACE #2	WENSLEY N°3 VEIN	QTZ. STRINGER	0.124	0.12		
88118	Δ	0.50 FT.	DRIFT FACE #2	WENSLEY N°3 VEIN	HANGING WALL	0.074	0.07		
88119	Δ	0.55 FT.	DRIFT FACE #2	WENSLEY N°3 VEIN	QTZ. VEIN	0.410	0.54		
88120	*		SHAFT		SILICEOUS FELSIC UNIT	0.088	0.22		

SAMPLE AND ASSAY RECORD SHEET

PROPERTY WICKS LAKE

DATE FEB. 14/84 PAGE NO. 2

SAMPLE NO.	T	WIDTH OF SAMPLE	DESCRIPTION			ASSAY			
						Au OZ./TON	Ag OZ./TON	Pb %	Cu %
88121	*		NORTH TRENCH	MILLREE NO1 VEIN	CHERT ZONE OR BEDDED QTZ. VEIN	0.001	0.01	0.001	
88122	=	0.67 FT.	NORTH TRENCH	MILLREE NO1 VEIN	"	0.001	0.02	0.001	0.01
88123	=	1.0 FT.	" "	"	"	0.001	0.01	0.001	0.01
88124	=	2.0 FT.	" "	"	"	0.001	0.01	0.001	0.01
88125	=	0.5 FT.	" "	"	"	0.001	0.01	0.001	0.01
88126	=	1.9 FT.	" "	"	"	0.001	0.01	0.001	0.01
88127	=	1.7 FT.	" "	"	"	0.001	0.01	0.001	0.01
88128	=	2.0 FT.	" "	"	"	0.001	0.01	0.001	0.01
88129	=	0.5 FT.	NORTH TRENCH	MILLREE NO1 VEIN	CHERT ZONE OR BEDDED QTZ. VEIN	0.001	0.01	0.001	0.01
88130	*	0.7 FT.	EDGE BEAVER POND	MILLREE	MILKY QTZ. VEIN	0.001	0.01	0.001	0.01
88131	*		SOUTH TRENCH	MILLREE		0.001	0.01	0.001	0.01
88132	Δ	0.4 FT.	BOTTOM 1983 TRENCH 83-2	WENSLEY NO3 VEIN	QTZ. VEIN	0.294	0.14	0.001	0.01
88133	Δ	0.8 FT.	BOTTOM 1983 TRENCH 83-2	WENSLEY NO3 VEIN	FOOT WALL QTZ. VEIN	0.073	0.01	0.001	0.01
88134	Δ	0.8 FT.	WEST FACE 1983 TRENCH 83-2	WENSLEY NO3 VEIN	QTZ. VEIN	0.209	0.05	0.001	0.01
88135	=	2.0 FT.	TRENCH	MILLREE NO5 VEIN	QTZ. STRINGERS CARBONATE ALTERATION	0.008	0.01	0.001	0.01
88136	=	2.0 FT.	"	"	QTZ. STRINGERS CARBONATE ALTERATION IN PIRRITE	0.005	0.01	0.001	0.01
88137	=	2.0 FT.	"	"	"	0.001	0.01	0.001	0.01
88138	=	2.0 FT.	"	"	"	0.007	0.01	0.001	0.01
88139	=	2.0 FT.	"	"	"	0.001	0.01	0.001	0.01
88140	=	2.0 FT.	"	"	"	0.001	0.01	0.001	0.01
88141	=	2.0 FT.	TRENCH	MILLREE NO5 VEIN	QTZ. STRINGERS CARBONATE ALTERED PIRRITE	0.068	0.01	0.001	0.01

SAMPLE AND ASSAY RECORD SHEET

PROPERTY WICKS LAKE

DATE FEB. 14/84 PAGE NO. 3

SAMPLE NO.	T	WIDTH OF SAMPLE	DESCRIPTION		ASSAY				
					Au OZ./TON	Ag OZ./TON	Mo %	Cu %	
88142	=	2.0 FT.	TRENCH	MILLREE NO 5 VEIN	QTZ. STRINGERS ALTOGA DIORITE	0.028	0.01	0.001	0.01
88143	=	2.0 FT.	TRENCH	MILLREE NO 5 VEIN	"	0.011	0.01	0.001	0.01
88144	Δ	1.1 FT.	NORTH WALL SHAFT	WENSLEY	FELSIC UNIT DISS. PYRITE	0.001	0.01	0.001	0.01
88145	Δ	1.3 FT.	NORTH WALL SHAFT	WENSLEY	FELSIC UNIT DISS. PYRITE	0.001	0.01	0.001	0.01
88146	Δ	1.0 FT.	"	"	"	0.001	0.01	0.001	0.01
88147	Δ	0.8 FT.	"	"	"	0.048	0.12	0.001	0.01
88148	Δ	1.0 FT.	"	"	"	0.014	0.01	0.001	0.02
88149	Δ	1.5 FT.	NORTH WALL SHAFT	WENSLEY "	QTZ. STRINGERS FELSIC UNIT DISS. PYRITE	0.008	0.01	0.001	0.01
88150	Δ	0.30 FT.	EAST WALL SHAFT	WENSLEY NO 3 VEIN	QTZ. VEIN	1.291	0.42	0.001	0.01
88276	Δ	2.7 FT.	EAST WALL SHAFT	WENSLEY	QTZ. STRINGER FELSIC, PYRITE.	0.072	0.16	0.001	0.01
88277	Δ	0.35 FT.	EAST WALL SHAFT	WENSLEY NO 3 VEIN	QTZ. VEIN	0.552	0.08	0.001	0.01
88278	Δ	0.15 FT.	EAST WALL SHAFT	WENSLEY NO 3 VEIN	QTZ. VEIN	1.302	0.34	0.001	0.01
88279	Δ	3.0 FT.	EAST WALL SHAFT	WENSLEY	QTZ. STRINGERS FELSIC UNIT DISS. PYRITE	0.194	0.59	0.001	0.01
88280	Δ	0.35 FT.	N.W. BOTTOM CORNER-SHAFT	WENSLEY NO 3 VEIN	QTZ. VEIN	0.526	0.59	0.001	0.01
88281	Δ	2.0 FT.	EAST WALL SHAFT	WENSLEY	FELSIC UNIT SILICEOUS	0.014	0.01	0.001	0.01
88282	*		RANDOM - LOCATION NEAR STRIPPING?			0.002	0.01	0.001	0.01
88283	Δ	0.9 FT.	STRIPPING AREA	WENSLEY NO 3 VEIN	QTZ. VEIN	0.098	0.01	0.001	0.01
88284	Δ	1.0 FT.		"	QTZ. VEIN	0.213	0.12	0.001	0.01
88285	Δ	0.8 FT.		"		0.006	0.05	0.001	0.01
88286	Δ	1.0 FT.		"		0.004	0.03	0.001	0.02
88287	*			"	QTZ. VEIN	0.	0.	0.001	0.01
88288	*			WENSLEY NO 3 VEIN	QTZ. VEIN	0.359	0.10	0.001	0.01

SAMPLE TYPE: \* - GRAB    Δ - CHIP    = - CHANNEL    □ - BULK

*Sept 3/83*

### ASSAY CERTIFICATE

SAMPLE TYPE : ROCK - CRUSHED AND PRULVERIZED TO -100 MESH.  
AG & AU BY FIRE ASSAY

ASSAYER *Deane Toye* DEAN TOYE, CERTIFIED B.C. ASSAYER

FRANCES RESOURCES LTD

FILE # 83-1899

PAGE# 1

SAMPLE	AG		AU	
	OZ/TON		OZ/TON	
88101	1.15	.630		
88102	.03	.007		
88103	.09	.033		
88104	5.41	4.050		
88105	.11	.054		
88106	.01	.005		
88107	.09	.004		
88108	.92	.660		
88109	.03	.008		
88110	.04	.003		
88111	.09	.150		
88112	.05	.002		
88113	1.69	1.610		
88114	.09	.075		
88115	5.88	3.960		
88116	.05	.039		
88117	.12	.124		
88118	.07	.074		
88119	.54	.410		
88120	.22	.088		

ACME ANALYTICAL LABORATORIES LTD.  
80 E. HASTINGS, VANCOUVER B.C.  
PH 253-3158 TELEX: 04-53124

DATE RECEIVED SEPT 19 1983  
DATE REPORTS MAILED *Sept 24/83*

ASSAY CERTIFICATE

SAMPLE TYPE : ROCK - CRUSHED AND PRULVERIZED TO -100 MESH.

ASSAYER *D. Toye* DEAN TOYE, CERTIFIED B.C. ASSAYER

BARRIER REEF RES. LTD FILE # 83-2212 PAGE# 1

SAMPLE	MO	AG	AU
	%	OZ/TON	OZ/TON
88121	.001	.01	.001

*CHELT ZONE or "BEDDED" QUARTZ VEIN.*

ACME ANALYTICAL LABORATORIES LTD.

852 E. HASTINGS, VANCOUVER B.C.

PH: 253-3158

TELEX: 04-53124

## ASSAY CERTIFICATE

A 1.00 GRAM SAMPLE IS DIGESTED WITH 50 ML OF 3:1:3 HCL TO HNO<sub>3</sub> TO H<sub>2</sub>O AT 90 DEG.C. FOR 1 HOUR. THE SAMPLE IS DILUTED TO 100 MLS WITH WATER.  
 ANALYSIS BY FIRE ASSAY SAMPLE TYPE - ROCK CHIPS

DATE RECEIVED OCT 11 1983

DATE REPORTS MAILED

*Oct 17/83*

ASSAYER

*D. Toye*

DEAN TOYE, CERTIFIED B.C. ASSAYER

FRANCES RESOURCES FILE # 83-2504

PAGE# 1

SAMPLE #	MO %	CU %	AG oz/t	Au o/t
88122	.001	.01	.02	.001
88123	.001	.01	.01	.001
88124	.001	.01	.01	.001
88125	.001	.01	.01	.001
88126	.001	.01	.01	.001
88127	.001	.01	.01	.001
88128	.001	.01	.01	.001
88129	.001	.01	.01	.001
88130	.001	.01	.01	.001
88131	.001	.01	.01	.001
88132	.001	.01	.14	.294
88133	.001	.01	.01	.073
88134	.001	.01	.05	.209
88135	.001	.01	.01	.008
88136	.001	.01	.01	.005
88137	.001	.01	.01	.001
88138	.001	.01	.01	.007
88139	.001	.01	.01	.001
88140	.001	.01	.01	.001
88141	.001	.01	.01	.068
88142	.001	.01	.01	.028
88143	.001	.01	.01	.011
88144	.001	.01	.01	.001
88145	.001	.01	.01	.001
88146	.001	.01	.01	.001
88147	.001	.01	.12	.048
88148	.001	.02	.01	.014
88149	.001	.01	.01	.008
88150	.001	.01	.42	1.291
88276	.001	.01	.16	.072
88277	.001	.01	.08	.552
88278	.001	.01	.34	1.302
88279	.001	.01	.59	.194
88280	.001	.01	.59	.526
88281	.001	.01	.01	.014
88282	.001	.01	.01	.002
88283	.001	.01	.01	.098

## FRANCES RESOURCES

FILE # 83-2504

PAGE# 2

SAMPLE #	MO %	CU %	AG oz/t	Au o/t
88284	.001	.01	.12	.213
88285	.001	.01	.05	.006
88286	.001	.02	.03	.004
88287	.001	.01	.13	.154
88288	.001	.01	.10	.359



4. Sample locations shown on Plan 01-83 were tied in from a Stadia traverse which runs adjacent to 1983 work program. Traverse is plotted on Plan 01-83 with station angles and distances. Wild T16 theodolite and stadia rod was used for survey traverse. Samples were side shots from stadia stations.

Sample locations on Millree property Veins No. 1 and No. 5, and accompanying Work Sketches, were tied into existing geological grid, established by Noranda in 1980-1981. Copy of geological Plan 06-83 is enclosed for grid reference.

I trust the above are required details.

Yours very truly,



R.M. Blais, P.Eng.

RMB/bb  
Encl.

cc: A.F. Reeve,  
Frances Resources Ltd.  
1983 Program - Wicks Lake

# CME ANALYTICAL LABORATORIES LTD.

852 Ea. Hastings St., Vancouver, B.C. V6A 1G6

File: 83-0310

Date: Apr. 7, 1983

s. Ltd.,  
stings St.,

**TERMS:**  
NET TWO WEEKS  
2% PER MONTH CHARGED ON  
OVERDUE ACCOUNTS

NUMBER	ASSAY	PRICE	AMOUNT
	Project : Crow Lake		
47	Geochem Au assays @	\$3.75	\$176.25 -
45	Geochem As assays @	2.50	112.50 -
2	Geochem Ag assays @	1.85	3.70 -
47	Sample preparations @	2.50	117.50 -
			\$409.95

*BK (C)*  
*5/2*  
*458.55*  
*2/26*  
*205 1/3*

PLEASE PAY LAST AMOUNT

# ACME ANALYTICAL LABORATORIES LTD.

PHONE: 253-3158

852 East Hastings St., Vancouver, B.C. V6A 6

83-0056  
 File: ~~Feb 22 1983~~

Date: Feb. 2, 1983

Barrier Reef Resources Ltd.,  
 904 - 675 W. Hastings St.,  
 Vancouver, B.C.  
 V6B 1N2

TERMS:  
 NET TWO WEEKS  
 2% PER MONTH CHARGED ON  
 OVERDUE ACCOUNTS

NUMBER	ASSAY	PRICE	AMOUNT
60	Geochem As assays @	\$2.50	\$150.00 -
60	Geochem Au assays @	3.75	225.00 -
60	Sample for drying @	1.00	60.00 -
60	Sample for pulverizing @	1.25	75.00 -
			\$510.00

CLIENT: RAF/K  
 PROJECT: \_\_\_\_\_  
 ACCT. No. \_\_\_\_\_  
 APPROVED: [Signature]  
 EXTENSIONS: \$510.00  
 VOUCHER No. 2305  
 DATE: Feb 14/83

PLEASE PAY LAST AMOUNT →



ACME ANALYTICAL LABORATORIES LTD.

Assaying & Trace Analysis

852 E. Hastings St., Vancouver, B. C. V6A 1R6

phone: 253 - 3158

To: Barrier Reef Resources Ltd.,  
904 - 675 W. Hastings St.,  
Vancouver, B.C.  
V6B 1N2

c.c. Westor Falls, Ontario

File No. 83-0056

Type of Samples Sediments

Disposition \_\_\_\_\_

**GEOCHEMICAL ASSAY CERTIFICATE**

SAMPLE No.	As	Au ppb										
1	14	5										1
5	6	5										2
8	2	-	- not enough sample for Au									3
												4
10	8	5										5
11	10	5										6
12	5	5										7
13	13	5										8
14	2	5										9
15	2	5										10
16	2	5										11
17	11	5										12
18	12	5										13
19	13	5										14
20	12	5										15
21	15	5										16
22	12	5										17
23	8	5										18
24	10	5										19
25	7	5										20
26	2	5										21
27	12	5										22
28	6	5										23
29	2	5										24
30	7	5										25
31	11	5										26
32	7	5										27
33	7	5										28
34	7	5										29
35	6	5										30
36	12	5										31
37	5	5										32
38	6	5										33
39	4	5										34
40	2	5										35
41	3	5										36
42	8	5										37
43	2	5										38
												39
												40

All reports are the confidential property of clients  
All results are in PPM.  
DIGESTION:.....  
DETERMINATION:.....

DATE SAMPLES RECEIVED Jan. 25, 1983  
DATE REPORTS MAILED Feb. 2, 1983  
ASSAYER D. Toye

DEAN TOYE, B.Sc.  
CHIEF CHEMIST  
CERTIFIED B.C. ASSAYER



ACME ANALYTICAL LABORATORIES LTD.

Assaying & Trace Analysis

852 E. Hastings St., Vancouver, B. C. V6A 1R6

phone: 253 - 3158

To: Barrier Reef Res.

File No. 83-0056

Type of Samples Sediments

Disposition \_\_\_\_\_

**GEOCHEMICAL ASSAY CERTIFICATE**

SAMPLE No.	As	Au ppb													
44	15	5													1
45	15	5													2
46	8	10													3
47	11	5													4
48	6	5													5
49	4	15													6
50	10	5													7
51	7	5													8
52	12	5													9
53	7	5													10
54	8	10													11
55	11	15													12
56	4	10													13
57	9	5													14
58	2	5													15
59	14	5													16
60	16	5													17
61	4	5													18
62	7	5													19
63	3	20													20
64	9	5													21
65	8	10													22
66	14	5													23
															24
															25
															26
															27
															28
															29
															30
															31
															32
															33
															34
															35
															36
															37
															38
															39
															40

All reports are the confidential property of clients  
All results are in PPM.

DIGESTION:.....

DETERMINATION:.....

\* Pb, Sb, Sn present.

DATE SAMPLES RECEIVED Jan. 25, 1983

DATE REPORTS MAILED Feb. 2, 1983

ASSAYER D. Toye

DEAN TOYE, B.Sc.  
CHIEF CHEMIST  
CERTIFIED B.C. ASSAYER



To: Barrier Reef Res. Ltd.,  
904 - 675 W. Hastings St.,  
Vancouver, B.C.

Assaying & Trace Analysis  
852 E. Hastings St., Vancouver, B. C. V6A 1R6  
phone: 253 - 3158

Project : Crow Lake

File No. 83-0310  
Type of Samples Lake Sed  
Disposition \_\_\_\_\_

### GEOCHEMICAL ASSAY CERTIFICATE

SAMPLE No.	As	Au ppb												
67	2	5												1
68	12	10												2
69	11	5												3
70	8	5												4
71	7	5												5
72	6	5												6
73	4	5												7
74	5	5												8
75	7	5												9
76	4	5												10
77	4	5												11
78	3	5												12
79	6	10												13
80	10	5												14
81	6	5												15
82	13	10												16
83	7	5												17
84	9	5												18
85	3	5												19
86	5	5												20
87	11	10												21
88	4	5												22
89	12	15												23
90	4	5												24
91	5	5												25
92	2	5												26
93	5	5												27
94	3	5												28
95	9	5												29
96	3	5												30
97	6	5												31
98	4	5												32
99	4	10												33
100	2	5												34
														35
101	8	15												36
102	9	5												37
103	3	5												38
														39
														40

All reports are the confidential property of clients  
All results are in PPM.  
DIGESTION:.....  
DETERMINATION:.....

DATE SAMPLES RECEIVED Mar. 29, 1983  
DATE REPORTS MAILED Apr. 7, 1983  
ASSAYER B. Toye  
DEAN TOYE, B.Sc.  
CHIEF CHEMIST  
CERTIFIED B.C. ASSAYER



# ACME ANALYTICAL LABORATORIES LTD.

PHONE: 253-3158

852 East Hastings St., Vancouver, B.C. V6A 1R6

File: 83-2504

Date: Oct. 17, 1983

Frances Resources Ltd.  
904 - 675 W. Hastings St.,  
Vancouver, B.C.  
V6B 1N2

TOOTS: 18 1983

NET TWO WEEKS  
2% PER MONTH CHARGED ON  
OVERDUE ACCOUNTS.

NUMBER	ASSAY	PRICE	AMOUNT
42	Ag and Au by Fire Assays @	\$12.00	\$ 504.00
42	Mo and Cu assays @	10.00	420.00
42	Rock sample preparations @	2.50	105.00
			\$1029.00

COMPANY	<i>Frances Resources Ltd.</i>
PROJECT	_____
ACCT. No.	_____
APPROVED	<i>[Signature]</i>
EXTENSIONS	<i>#1045.00</i>
VOUCHER No.	<i>32</i>
DATE PAID	<i>Oct 27/83</i>

PLEASE PAY LAST AMOUNT →



# ACME ANALYTICAL LABORATORIES LTD.

PHONE: 253-3158

852 East Hastings St., Vancouver, B.C. V6A 1R6

83-2212

SEP 22 1983 Date: SEPT 21 1983

BARRIER REEF RES. LTD  
904 - 675 W. HASTINGS ST  
VANCOUVER B.C.  
V6B 1N2

TERMS:  
NET TWO WEEKS  
2% PER MONTH CHARGED ON  
OVERDUE ACCOUNTS.

NUMBER	ASSAY	PRICE	AMOUNT
1	MO AG AU ASSAY ANALYSIS @	13.50	13.50
1	ROCK SAMPLE PREPARATON @	2.50	2.50
			16.00

COMPANY	<i>Flora</i>
PROJECT	<i>Wicks</i>
ACCT. No.	
APPROVED	<i>[Signature]</i>
EXTENSIONS	
VOUCHER No.	
DATE PAID	

*ndt*

PLEASE PAY LAST AMOUNT →

# ACME ANALYTICAL LABORATORIES LTD.

PHONE: 253-3158

852 West Hastings St., Vancouver, B.C. V6C 1R6

File: 83-1655

Date: AUG 19 1983

**RECEIVED**  
AUG 22 1983

BARRIER REEF RESOURCES LTD  
904-675 W. HASTINGS ST.  
VANCOUVER B.C.  
V6E 1N2

**TERMS:**  
NET TWO WEEKS  
2% PER MONTH CHARGED ON  
OVERDUE ACCOUNTS.

NUMBER	ASSAY	PRICE	AMOUNT
4	AG AU ASSAY ANALYSIS @	10.00	40.00
4	ROCK SAMPLE PREPARATON @	2.50	10.00
			50.00

50.00  
290.00  
40.00

COMPANY Shan

PROJECT \_\_\_\_\_

ACCT. No. \_\_\_\_\_

APPROVED [Signature]

EXTENSIONS \_\_\_\_\_

VOUCHER No. \_\_\_\_\_

DATE PAID \_\_\_\_\_

PLEASE PAY LAST AMOUNT

# ACME ANALYTICAL LABORATORIES LTD.

PHONE: 253-3158

852 1st Hastings St., Vancouver, B.C. V6R 1R6

File: 83-1899

Date: SEPT 3 1983

**RECEIVED**

SEP 7 1983

FRANCES RESOURCES LTD  
904 - 675 W. HASTINGS ST  
VANCOUVER B.C.  
V6B 1W2

TERMS:  
NET TWO WEEKS  
2% PER MONTH CHARGED ON  
OVERDUE ACCOUNTS.

NUMBER	ASSAY	PRICE	AMOUNT
20	AU+AG (FA) ASSAY @	12.00	240.00
20	ROCK SAMPLE PREPARATON @	2.50	50.00
			290.00

50.00 }  
290.00 } *Wicks*  

---

340.00

COMPANY *Francis Wicks*

PROJECT \_\_\_\_\_

ACCT. No. *5/21*

APPROVED *[Signature]*

EXTENSIONS *340.00*

VOUCHER No. *24*

DATE PAID *Sept 23/83*

*el*

PLEASE PAY LAST AMOUNT →

*Tranaco File*

ACME ANALYTICAL LABORATORIES LTD. 852 E. HASTINGS, VANCOUVER B.C. PH: 253-3158 TELEX: 04-53124

**ASSAY CERTIFICATE**

A 1.00 GRAM SAMPLE IS DIGESTED WITH 50 ML OF 3:1:3 HCL TO HNO<sub>3</sub> TO H<sub>2</sub>O AT 90 DEG.C. FOR 1 HOUR. THE SAMPLE IS DILUTED TO 100 ML WITH WATER.  
AU BY FIRE ASSAY SAMPLE TYPE - ROCK CHIPS

DATE RECEIVED OCT 11 1983 DATE REPORTS MAILED Oct 17/83 ASSAYER D. Jagg DEAN TOYE, CERTIFIED B.C. ASSAYER

FRANCES RESOURCES FILE # 83-2504

PAGE# 1

SAMPLE #	MO %	CU %	AG oz/t	AU o/t
88122	.001	.01	.02	.001
88123	.001	.01	.01	.001
88124	.001	.01	.01	.001
88125	.001	.01	.01	.001
88126	.001	.01	.01	.001
88127	.001	.01	.01	.001
88128	.001	.01	.01	.001
88129	.001	.01	.01	.001
88130	.001	.01	.01	.001
88131	.001	.01	.01	.001
88132	.001	.01	.14	.294
88133	.001	.01	.01	.073
88134	.001	.01	.05	.209
88135	.001	.01	.01	.008
88136	.001	.01	.01	.005
88137	.001	.01	.01	.001
88138	.001	.01	.01	.007
88139	.001	.01	.01	.001
88140	.001	.01	.01	.001
88141	.001	.01	.01	.068
88142	.001	.01	.01	.028
88143	.001	.01	.01	.011
88144	.001	.01	.01	.001
88145	.001	.01	.01	.001
88146	.001	.01	.01	.001
88147	.001	.01	.12	.048
88148	.001	.02	.01	.014
88149	.001	.01	.01	.008
88150	.001	.01	.42	1.291
88276	.001	.01	.16	.072
88277	.001	.01	.08	.552
88278	.001	.01	.34	1.302
88279	.001	.01	.59	.194
88280	.001	.01	.59	.526
88281	.001	.01	.01	.014
88282	.001	.01	.01	.002
88283	.001	.01	.01	.098

## FRANCES RESOURCES FILE # 83-2504

PAGE# 2

SAMPLE #	MO %	CU %	AG oz/t	AU o/t
88284	.001	.01	.12	.213
88285	.001	.01	.05	.006
88286	.001	.02	.03	.004
88287	.001	.01	.13	.154
88288	.001	.01	.10	.359

ACME ANALYTICAL LABORATORIES LTD.  
85 E. HASTINGS, VANCOUVER B.C.  
PH: 253-3158 TELEX: 04-53124

DATE RECEIVED SEPT 19 1983

DATE REPORTS MAILED *Sept 21/83*

### ASSAY CERTIFICATE

SAMPLE TYPE : ROCK - CRUSHED AND PRULVERIZED TO -100 MESH.

ASSAYER *D. Toye* DEAN TOYE, CERTIFIED B.C. ASSAYER

BARRIER REEF RES. LTD

FILE # 83-2212

PAGE# 1

SAMPLE

MO      AG      AU  
%    OZ/TON    OZ/TON

BB121

.001      .01      .001

*CHERT ZONE or "BEDDED" QUARTZ VEIN.*

*Traces  
with Rebr  
assay  
file*

*copy to  
for Revis*

ACME ANALYTICAL LABORATORIES LTD.  
852 E. HASTINGS, VANCOUVER B.C.  
PH 53-3158 TELEX:04-53124

DATE RECEIVED AUG 30 1983

DATE REPORTS MAILED *Sept 3/83*

### ASSAY CERTIFICATE

SAMPLE TYPE : ROCK - CRUSHED AND PRULVERIZED TO -100 MESH.  
AG & AU BY FIRE ASSAY

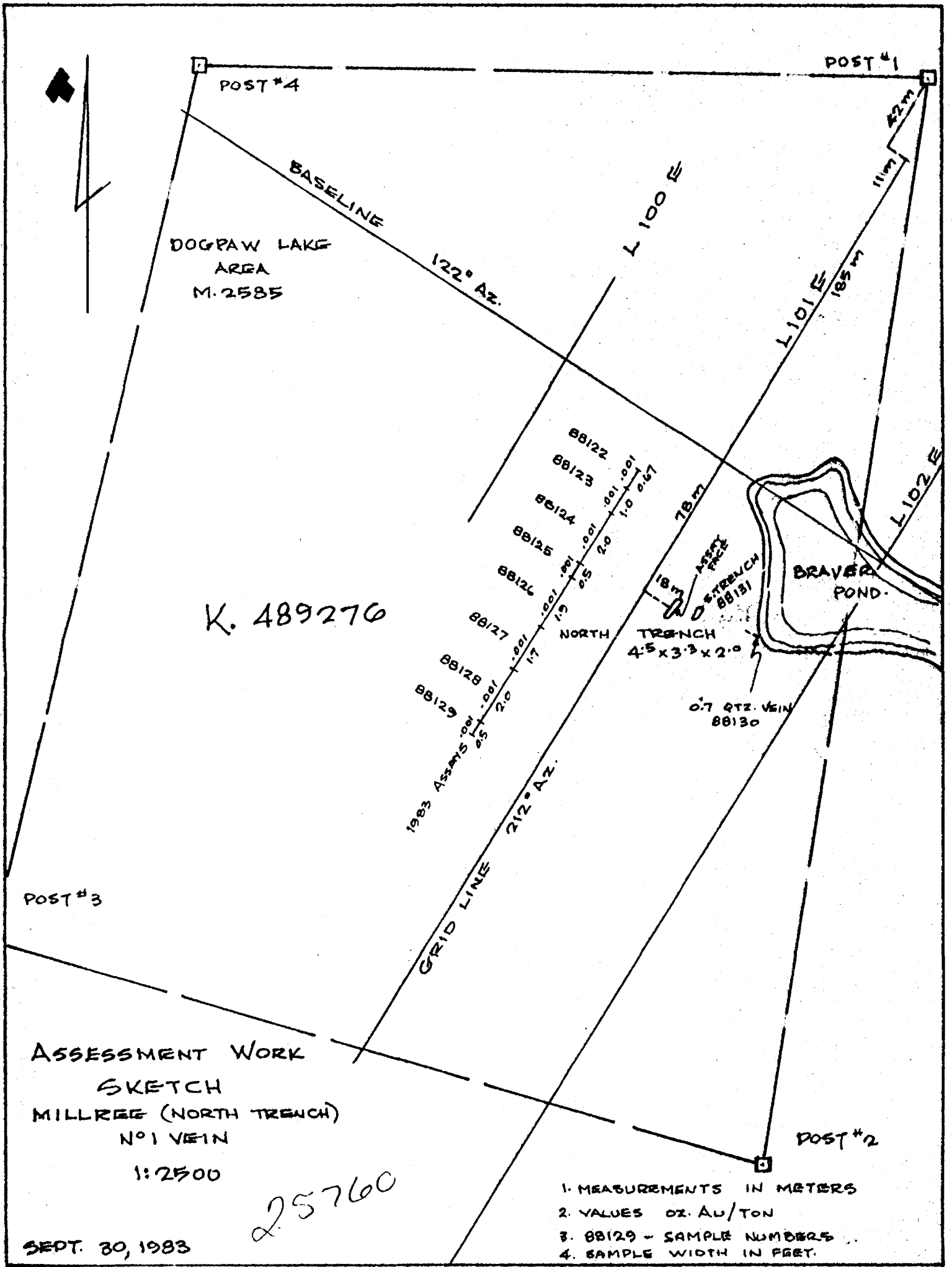
ASSAYER *D. J. [Signature]* DEAN TOYE, CERTIFIED B.C. ASSAYER

FRANCES RESOURCES LTD

FILE # 83-1899

PAGE# 1

SAMPLE	AG	AU
	OZ/TON	OZ/TON
88101	1.15	.630
88102	.03	.007
88103	.09	.033
88104	5.41	4.050
88105	.11	.054
88106	.01	.005
88107	.09	.004
88108	.92	.660
88109	.03	.008
88110	.04	.003
88111	.09	.150
88112	.05	.002
88113	1.69	1.610
88114	.09	.075
88115	5.88	3.960
88116	.05	.039
88117	.12	.124
88118	.07	.074
88119	.54	.410
88120	.22	.088







DOGPAW LAKE  
AREA.  
M. 2585

BASELINE 122° AZ.

L 105 E

L 106 E

150 m

POST #1

TRENCH  
5.5 x 1.5 x 1.5

ASSAY  
FACE

61 m

196 m.	88135	88136	88137	88138	88139	88140	88141	88142	88143
.008	.005	.001	.007	.001	.001	.068	.028	.011	
2.0	2.0	2.0	2.0	2.0	2.0	2.0	2.0	2.0	2.0

1988  
ASSAYS

GRID LINE  
212° AZ.

OLD DRILL ROAD.

K. 489271

ASSESSMENT WORK  
SKETCH

MILLREE N°5 VEIN

1:2500

25760

1. MEASUREMENTS IN METERS
2. VALUES OZ AU/TON
3. 88140 - SAMPLE NUMBERS
4. SAMPLE WIDTH IN FEET.

POST #3

POST #2

SEPT. 30, 1983





Ontario

Ministry of Natural Resources

FWM

Report of Work (Geophysical, Geological, Geochemical and Expenditures)

Instructions: - Please type or print. - If number of mining claims traversed exceeds space on this form, attach a list. Note: - Only days credits calculated in the "Expenditures" section may be entered in the "Expend. Days Cr." columns. - Do not use shaded areas below.

The Mining Act

25760

455-83

Form header containing: Type of Survey(s) ASSAYS - LAKE SEDIMENT SAMPLING; Township or Area BROOKS LAKE M-2475 HERONRY LAKE M-2475; Claim Holder(s) FRANCIS RESOURCES LTD.; Prospector's Licence No. T-1316; Address 3000 - 1055 WEST GEORGIA STREET VANCOUVER, B.C. V6E 3R3; Survey Company; Date of Survey (from & to) 04 01 83 | 31 03 83; Total Miles of line Cut; Name and Address of Author (of Geo-Technical report)

Credits Requested per Each Claim in Columns at right

Table with columns: Special Provisions, Geophysical, Days per Claim, Man Days, Airborne Credits. Includes handwritten 'RECEIVED' stamp dated AUG 9 1983 and 'MINING LANDS SECTION' stamp.

Mining Claims Traversed (List in numerical sequence)

Table with columns: Mining Claim Prefix, Mining Claim Number, Expend. Days Cr., Mining Claim Prefix, Mining Claim Number, Expend. Days Cr. Includes handwritten notes: 'See Revised North Plate map'.

Stamp: KENORA MINING DIV. RECEIVED JUL 12 1983 AM 7:00 PM 15:00

Expenditures (excludes power stripping)

Form containing: Type of Work Performed CHEMICAL ASSAYS; Performed on Claim(s) K 590290, K 590292, K 590293, K 590294, K 590295, K 590296, K 590297, K 590298, K 590299; Calculation of Expenditure Days Credits: Total Expenditures \$ 919.95 ÷ 15 = Total Days Credits 61

Total number of mining claims covered by this report of work.

Instructions: Total Days Credits may be apportioned at the claim holder's choice. Enter number of days credits per claim selected in columns at right.

For Office Use Only: Total Days Cr. Recorded 61; Date Recorded July 12/83; Mining Recorder [Signature]; Date Approved as Recorded; Branch Director [Signature]

Date JULY 06/83; Recorded Holder or Agent (Signature) RM Blais

Certification Verifying Report of Work

I hereby certify that I have a personal and intimate knowledge of the facts set forth in the Report of Work annexed hereto, having performed the work or witnessed same during and/or after its completion and the annexed report is true.

Name and Postal Address of Person Certifying: RONALD M. BLAIS 705-474-4793 1425 PINEGROVE CRES NORTH BAY, ONTARIO A8A 4P9; Date Certified JULY 06, 1983; Certified by (Signature) RM Blais



REGISTERED

1984 06 21

File:2.6215

Roy A. Martin  
P.O. Box 867  
313 Main Street  
Sturgeon Falls, Ontario  
POH 2G0

Dear Sir:


RE: Data for Assaying submitted on Mining  
Claims K 535966-67-68 in the Area of  
Dogpaw Lake.

Enclosed is a copy of our letter dated April 5, 1984  
requesting additional information for the above-described  
survey.

Unless you can provide the required data by July 3, 1984,  
the mining recorder will be directed to cancel  
the work credits recorded on December 6, 1983.

For further information, please contact Mr. Ray  
Pichette at (416)965-4888.

Yours sincerely,

  
S.E. Yundt  
Director  
Land Management Branch

Whitney Block, Room 6643  
Queen's Park  
Toronto, Ontario  
M7A 1W3  
Phone: (416)965-1380

*Rol* S. Hurst:sc

cc: Mining Recorder  
Kenora, Ontario

Encl.

(BLUE COPY)

DISREGARD

85760

1984 04 05

Your File: 155  
Our File: ~~2.6215~~

Roy A. Martin  
P.O. Box 867  
313 Main Street  
Sturgeon Falls, Ontario  
POH 2G0

Dear Sir:

RE: Data for Assaying submitted on Mining Claims  
K 535966-67-68 in the Area of Dogpaw Lake

---

Enclosed is a copy of the Requirements for submitting  
Geophysical, Geological and Geochemical Survey  
Reports. The requirements for Expenditure Credits  
are outlined on Pages 22 & 23. Please provide  
a sample location plan indicating the location  
of the claims surveyed and all samples which  
were assayed.

For further information, please contact Mr. F.W.  
Matthews at (416)965-6918.

Yours sincerely,

S.E. Yundt  
Director  
Land Management Branch

Whitney Block, Room 6643  
Queen's Park  
Toronto, Ontario  
M7A 1W3  
Phone: (416)965-6918

M.E. Anderson:mc

cc: Mining Recorder  
Kenora, Ontario



File ~~26215~~  
2.5760

Mining Lands Comments

- need map showing the location of the samples.

To: Geophysics

Comments

Approved  Wish to see again with corrections Date Signature

To: Geology - Expenditures Mr Rustra

Comments We need a map showing where assay samples are located. Key map; claim map; where on claims samples were taken; sample #'s locations

Approved  Wish to see again with corrections Date March 19/84 Signature C. Rustra

To: Geochemistry

Comments L.D.

Approved  Wish to see again with corrections Date Signature

To: Mining Lands Section, Room 6462, Whitney Block. (Tel: 5-1380)

Initial Check.

DK - 8/3/84

Assessed

DK - June 27/84

Approved Reports of Work  
sent out

Notice of Intent filed

Approval after Notice of Intent  
sent out

Duplicate sent to Resident  
Geologist

Duplicate sent to A.F.R.O.

1984 01 05

Your File: 155

Our File: ~~2.6215~~

2.5760

Mr. Wade Mathew  
Mining Recorder  
Ministry of Natural Resources  
808 Robertson Street  
Box 5160  
Kenora, Ontario  
P9N 3X9

Dear Sir:

We have received data for Assaying submitted under Section 77(19) of the Mining Act R.S.O. 1980 for Mining Claims K 535966-67-68 in the Area of Dogpaw Lake.

This material will be examined and assessed and a statement of assessment work credits will be issued.

We do not have a copy of the report of work which is normally filed by you prior to the submission of this technical data. Please forward a copy as soon as possible.

Yours very truly,

J.R. Morton  
Acting Director  
Land Management Branch

Whitney Block, Room 6643  
Queen's Park  
Toronto, Ontario  
M7A 1W3  
Phone: (416)965-1380

A. Barr:mc

cc: Roy A. Martin  
P.O. Box 867  
313 Main Street  
Sturgeon Falls, Ontario  
POH 2G0



1984 05 01

Your File: 88-83  
Our File: 2.5760

Mr. Wade S. Mathew  
Mining Recorder  
Ministry of Natural Resources  
808 Robertson Street  
Box 5080  
Kenora, Ontario  
P9N 3X9

Dear Sir:

RE: Assaying submitted under Section 77(19) of the  
Mining Act RSO 1980, on Mining Claims K 489266  
et al in the Areas of Brooks Lake and Heronry Lake

The enclosed statement of assessment work credits for  
assaying expenditures has been approved as of the above  
date.

Please inform the recorded holder of these mining claims  
and so indicate on your records.

Yours sincerely,

S.E. Yundt  
Director  
Land Management Branch

Whitney Block, Room 6643  
Queen's Park  
Toronto, Ontario  
M7A 1W3  
Phone: (416)965-6918

D. Kinvig:mc

cc: Francis Resources Ltd  
Suite 3000  
1055 West Georgia Street  
Vancouver, B.C.  
V6E 3R3

cc: Resident Geologist  
Kenora, Ontario



Ontario

Ministry of  
Natural  
Resources

# Technical Assessment Work Credits

File  
2.5760

Date  
1984 05 01

Mining Recorder's Report of  
Work No. 88-83

Recorded Holder	FRANCIS RESOURCES LTD
Township or Area	BROOKS LAKE AND HERONRY LAKE

Type of survey and number of Assessment days credit per claim	Mining Claims Assessed
<b>Geophysical</b> Electromagnetic _____ days Magnetometer _____ days Radiometric _____ days Induced polarization _____ days Other _____ days Section 77 (19) See "Mining Claims Assessed" column <b>Geological</b> _____ days <b>Geochemical</b> _____ days  Man days <input type="checkbox"/> Airborne <input type="checkbox"/> Special provision <input type="checkbox"/> Ground <input type="checkbox"/>  <input type="checkbox"/> Credits have been reduced because of partial coverage of claims. <input type="checkbox"/> Credits have been reduced because of corrections to work dates and figures of applicant.	\$919.95 SPENT ON ASSAYING SAMPLES TAKEN FROM MINING CLAIMS:  K 489266 489271 489273 489276  61 DAYS CREDIT ALLOWED WHICH MAY BE GROUPED IN ACCORDANCE WITH SECTION 76(6) OF THE MINING ACT

Special credits under section 77 (16) for the following mining claims

No credits have been allowed for the following mining claims

not sufficiently covered by the survey                       Insufficient technical data filed

The Mining Recorder may reduce the above credits if necessary in order that the total number of approved assessment days recorded on each claim does not exceed the maximum allowed as follows: Geophysical — 80; Geological — 40; Geochemical — 40; Section 77(19)—60;



Mining Lands Comments

*You wanted to see this file again.*

To: Geophysics

Comments

*Sample location plan for Report  
of Work #88-93 in file 2.5680.*

Approved

Wish to see again with corrections

Date

Signature

To: Geology - Expenditures

*Mr. Kusta.*

Comments

Approved

Wish to see again with corrections

Date

*Feb 29 / 84*

Signature

*Kusta*

To: Geochemistry

Comments

Approved

Wish to see again with corrections

Date

Signature

To: Mining Lands Section, Room 6462, Whitney Block.

(Tel: 5-1380)



Aug. 26/83.

Mining Lands Comments

- Sample location plan needed.

To: Geophysics

Comments

*see reference*

Approved  Wish to see again with corrections Date \_\_\_\_\_ Signature \_\_\_\_\_

To: Geology - Expenditures *Mr. Kustra.*

Comments

*Not acceptable. We need a brief report describing the methods & approach used in the survey ~~and analysis~~ and a map showing location of sampled points and values obtained.*

Approved  Wish to see again with corrections Date *Oct 24/83* Signature *C. Kustra*

To: Geochemistry

Comments

*LO*

Approved  Wish to see again with corrections Date \_\_\_\_\_ Signature \_\_\_\_\_

To: Mining Lands Section, Room 6462, Whitney Block. (Tel: 5-1380)

January 5, 1984

Your File: 88-83

Our File: 2.5760

Francis Resources Ltd  
Suite 3000  
1055 West Georgia Street  
Vancouver, B.C.  
V6E 3R3

Dear Sirs:

RE: Sample Assay Expenditures submitted on  
Mining Claims K 590290 et al in the  
Areas of Brooks Lake and Heronry Lake

---

Please provide a plan, in duplicate, showing the sample locations and the corresponding assay results for at least one of the elements.

In addition, please provide a brief description of the methods you used in the survey and the analytical technique used in obtaining the assays.

For further information, please contact Mr. F.W. Matthews at (416)965-1380.

Yours very truly,

E.F. Anderson  
Director  
Land Management Branch

Whitney Block, Room 6643  
Queen's Park  
Toronto, Ontario  
M7A 1W3  
Phone: (416)965-1380

D. Kinvig:mc

cc: Mining Recorder  
Kenora, Ontario

88

2.5760

1983 08 19

Mr. Wade Mathew  
Mining Recorder  
Ministry of Natural Resources  
808 Robertson Street  
Box 5160  
Kenora, Ontario  
P9N 3X9

Dear Sir:

We have received data for Assaying submitted under Section 77(19) of the Mining Act R.S.O. 1980 for Mining Claims K 590738 and K 590739 in the Areas of Brooks and Heronry Lakes.

This material will be examined and assessed and a statement of assessment work credits will be issued.

Yours very truly,

E.F. Anderson  
Director  
Land Management Branch

Whitney Block, Room 6450  
Queen's Park  
Toronto, Ontario  
M7A 1W3  
Phone: (416)965-1380

A. Barr:mc

cc: Francis Resources Ltd  
Suite 3000  
1055 West Georgia Street  
Vancouver, B.C.  
V6E 3R3

1425 PINEGROVE CRES.

NORTH BAY, ONTARIO  
P1B 4P9

Office 705-474-4110  
Home 705-474-4793

February 24, 1984

RECEIVED

FEB 27 1984

LAND MANAGEMENT BRANCH

Mr. E.F. Anderson, Director  
Land Management Branch  
Whitney Block, Room 6643  
Queen's Park  
Toronto, Ontario  
M7A 1W3

Dear Sir:

RE: Sample Assay Expenditures  
Submitted on Mining Claim  
K. 590290 in the areas of  
Brooks Lake and Heronry Lake

Your file - 2.5760

Our file - 88-83

RECEIVED

FEB 27 1984

MINING LANDS SECTION

Please find enclosed in duplicate as requested, the following information:

1. Plan 01-83, showing location, assay results and sample numbers.
2. Sampling and Assay Results.
3. Brief description of analytical technique is discussed in Sampling and Assay Results section of No. 2.

Rowan Lake Area (M-2580)

AREA OF

**BROOKS LAKE**

DISTRICT OF  
KENORA

KENORA  
MINING DIVISION

SCALE: 1-INCH 40 CHAINS

LEGEND

PATENTED LAND	⊙
CROWN LAND SALE	C.S.
LEASES	L
LOCATED LAND	Loc
LICENSE OF OCCUPATION	LO
MINING RIGHTS ONLY	MRO
SURFACE RIGHTS ONLY	SRO
ROADS	—
IMPROVED ROADS	—
KING'S HIGHWAYS	—
RAILWAYS	—
POWER LINES	—
MARSH OR MUSKIE	—
MINES	—

NOTES

400' Surface Rights Reservation around  
all Lakes and Rivers

DATE OF ISSUE

NOV 3 1983

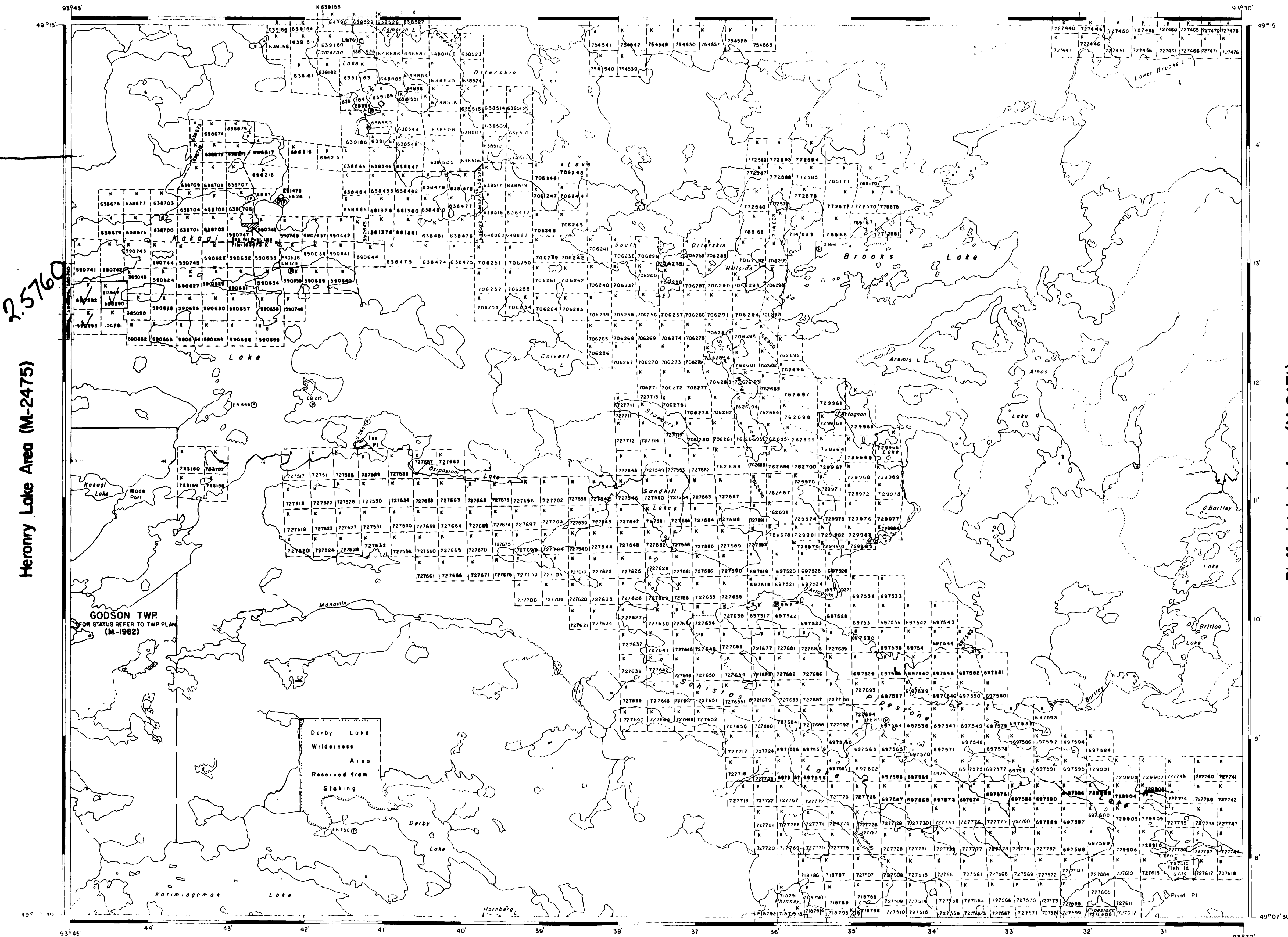
Ministry of Natural Resources  
TORONTO

NATIONAL TOPOGRAPHIC SERIES 52 F 4

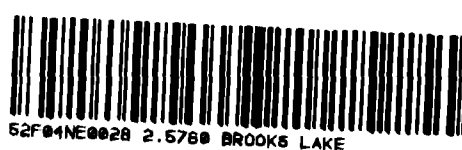
PLAN NO. **M-2473**

ONTARIO  
MINISTRY OF NATURAL RESOURCES  
SURVEYS AND MAPPING BRANCH

492933



Dash Lake (M-2024)





DOGPAW LAKE M.2585

AREA OF

# HERONRY LAKE

DISTRICT OF KENORA

KENORA MINING DIVISION

SCALE: 1-INCH = 40 CHAINS

### LEGEND

- PATENTED LAND ● or ⊙
- CROWN LAND SALE C.S.
- LEASES ⊙
- LOCATED LAND Loc.
- LICENSE OF OCCUPATION M.R.O.
- MINING RIGHTS ONLY M.R.O.
- SURFACE RIGHTS ONLY S.R.O.
- ROADS —
- IMPROVED ROADS —
- KING'S HIGHWAYS —
- RAILWAYS —
- POWER LINES —
- MARSH OR MUSKOG —
- MINES —
- CANCELLED —
- PATENTED S.R.O. —

### NOTES

400' surface rights reservation along the shores of all lakes and rivers

Areas withdrawn from staking under Section 43 of the Mining Act (1975)

Year No.	File	Date	Disposition	
70	W 65/76	18821	19/11/76	M.R.O.

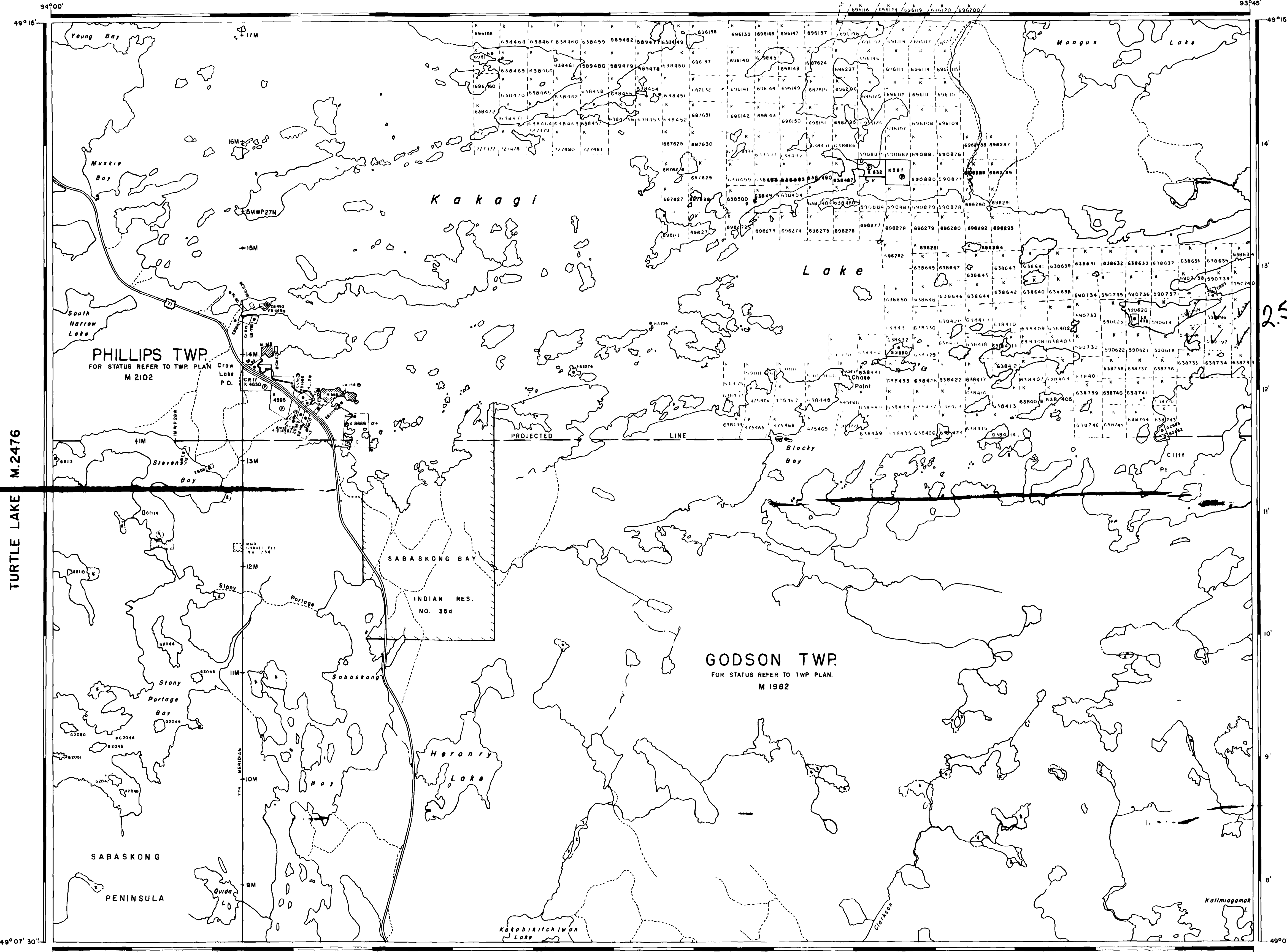
DATE OF ISSUE  
NOV 3 1983  
Ministry of Natural Resources  
TORONTO

NATIONAL TOPOGRAPHIC SERIES 52 F 4

PLAN NO. **M-2475**

ONTARIO  
MINISTRY OF NATURAL RESOURCES  
SURVEYS AND MAPPING BRANCH

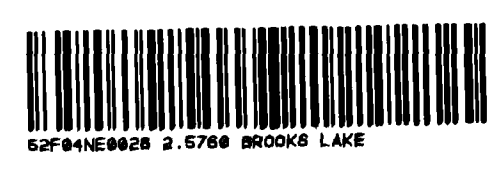
492934

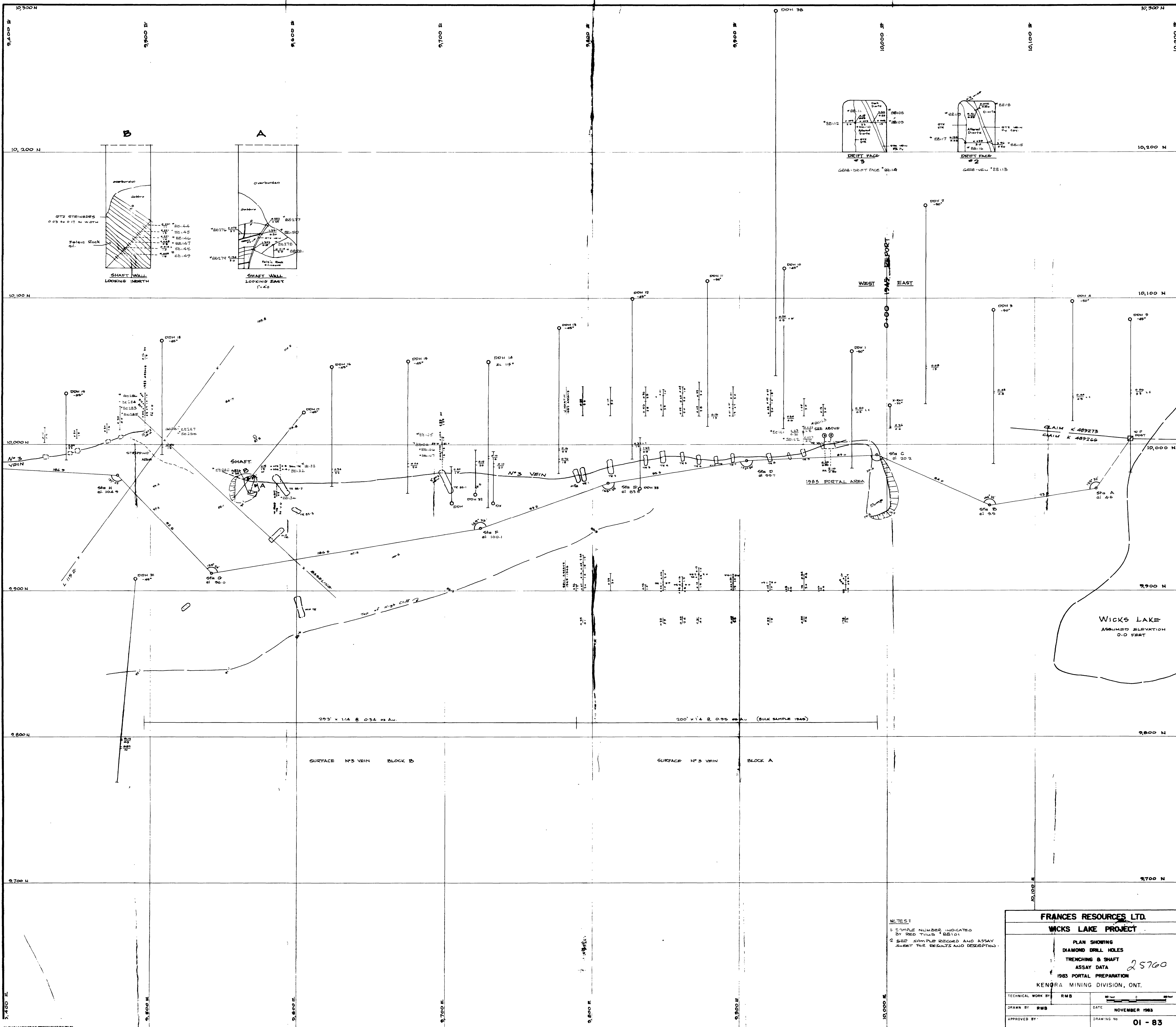


TURTLE LAKE M.2476

BROOKS LAKE M.2473

PINUS LAKE M.2036





NOTES:  
 1. SAMPLE NUMBERS INDICATED BY RED TAILS & BB101.  
 2. SEE SAMPLE RECORD AND ASSAY SHEET FOR RESULTS AND DESCRIPTIONS.

<b>FRANCES RESOURCES LTD.</b>	
<b>WICKS LAKE PROJECT</b>	
PLAN SHOWING DIAMOND DRILL HOLES TRENCHING & SHAFT ASSAY DATA <span style="float: right;">25760</span> 1983 PORTAL PREPARATION KENORA MINING DIVISION, ONT.	
TECHNICAL WORK BY	RMB
DRAWN BY	RMB
DATE	NOVEMBER 1983
APPROVED BY	
DRAWING NO.	01-83

