



52F04SE0021 10 DASH LAKE

010

AREA OF DASH LAKE REPORT #10

This file contains work performed by Lun-Echo Gold on claims:

K.29656	Hole #J-2;	February, 1960
	Hole #J-3;	February, 1960

K 29654

CORE LOG

HOLE NO. J-2 & J-3

FROM	TO	DESCRIPTION
<u>DDH J-2</u> (-45°)		
0	10.0	Casing
10.0	100.0	Chlorite schist, occasional quartz-filled fractures, sparse mineralization
100.0	125.0	Chlorite schist, 10% to 15% quartz-filled fractures, widely disseminated fine pyrite and chalcopyrite
125.0	127.9	Quartz-feldspar dikelet; fine chalcopyrite and pyrite
127.9	156.0	Chlorite schist, 15% quartz-filled fractures, coarse pyrite
156.0	177.3	Carbonate-talc-schist; highly impregnated with quartz; sometimes includes sections of dark mineralized brecciated material; mineralization mostly pyrite with minor fine chalcopyrite
177.3	278.0	Continuing carbonate-talc schist, buff gre-green, decreasing in quartz content
278.0	392.0	Carbonate-talc-schist, more massive, very little quartz
392.0	415.0	Dark grey schisted basic lavas; very little fracturing, silicification or carbonatization.
	415.0	END OF HOLE
<u>DDH J-3</u> (-65°)		
<u>This hole was drilled from same set-up and in same section as DDH J-2</u>		
0	8.0	Casing
8.0	145.0	Chlorite schist, occasional quartz-filled fractures, sparse mineralization
145.0	204.0	Carbonate-talc-schist; 10% to 20% irregular quartz-filled fractures, sections of well mineralized dark brecciated material with high percentages of pyrite and minor fine chalcopyrite
	204.0	END OF HOLE

Collar Elevation: 10017'

HOLE STARTED - J-2 5 Feb 60 COMPLETED - 7 Feb 60 CONTRACTOR - Canadian Longyear
 J-3 7 Feb 60 8 Feb 60

LEGEND

- CS CHLORITE SCHIST
- CTS CARBONATE-TALC-SCHIST
- G GABBRO
- BQ BUFF QUARTZ
- P PORPHYRY
-
-

MINE - LUN-ECHO GOLD MINES LIMITED
 PROPERTY - HELENA LAKE
 HOLE NO. J-2 & 3 INCLINED 45° & 65° BEARING N 75-00 W
 COLLAR LOCATION - 12,600 N 295 E

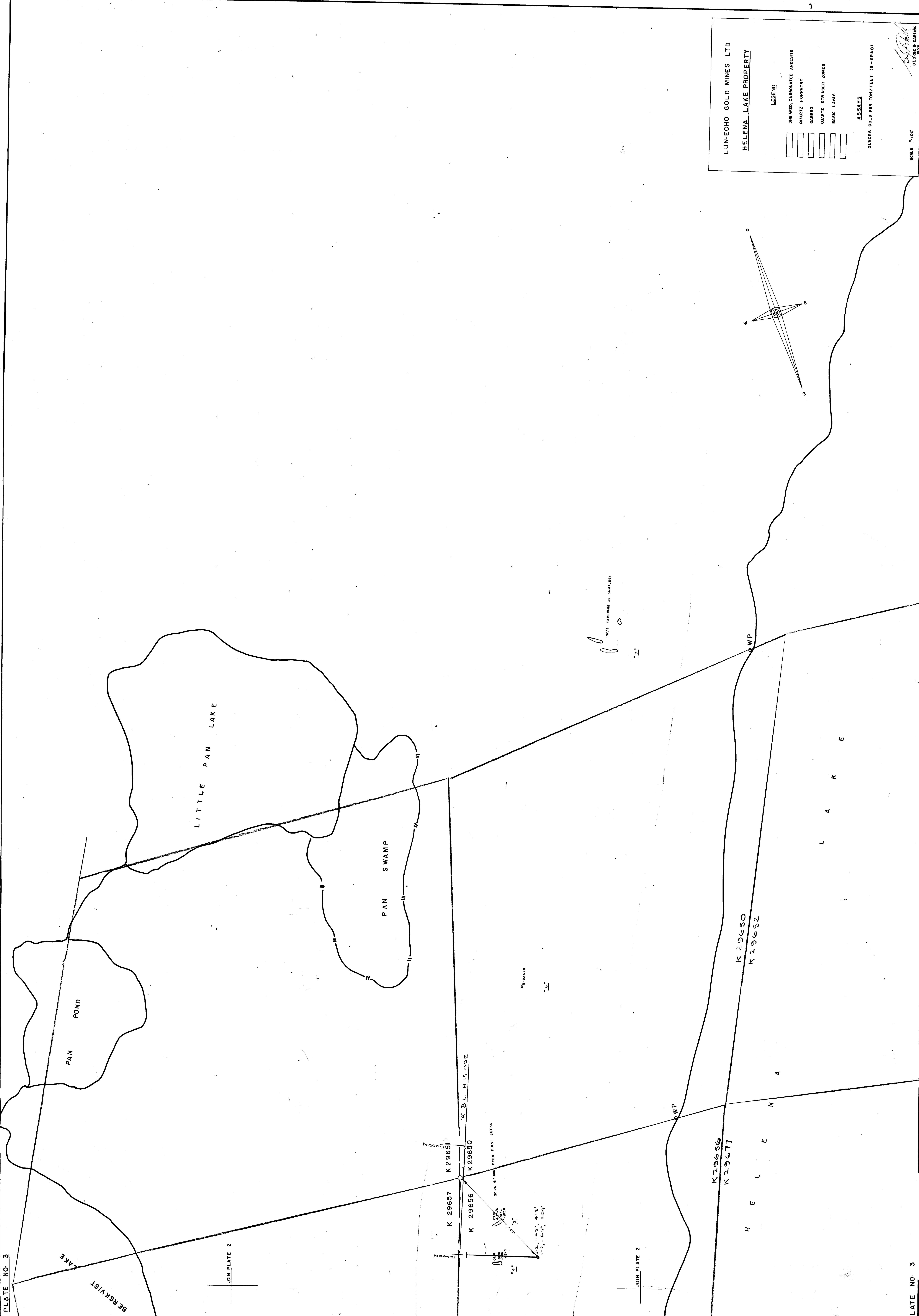
- INCLINATIONS -

DDH J-2		DDH J-3	
0'	- 45°	0'	- 65°
100'	- 45°	100'	- 64°
200'	- 42°	200'	- 62°
300'	- 41°		

LOGGED BY - George B. Darling
 DRAWN BY - George B. Darling
 ASSAYS BY - Sudbury Assay Office
 SCALE 1" = 40'
 DATE - 15 Feb 60

CORE ASSAYS

SAMPLE	FROM	TO	FEET	oz/Ton Gold	\$/T Gold	DESCRIPTION
@ \$35.00 per ounce)						
<u>DDH J-2</u>						
5427	53.0	55.0	2.0	Nil		Chl sch, 5% qtz frags
5428	100.0	105.0	5.0	0.015	0.52	Chl sch, 15% qtz frags, fine pyr & chalco
5429	105.0	110.0	5.0	Tr		Chl sch, 10% qtz frags, fine pyr & chalco
5430	110.0	115.0	5.0	Tr		" " " " " "
5431	115.0	120.0	5.0	Nil		" " " " " "
5432	120.0	125.0	5.0	Tr		" " " " " "
5433	125.0	127.9	2.9	Tr		Qtz-feld dikelet; fine chalco
5434	150.0	156.0	6.0	Tr		Chl sch; 15% qtz & coarse pyr
5435	165.0	170.0	5.0	0.005	0.17	Carb-talc sch, mineralized breccia
5436	170.0	175.0	5.0	Tr		" " " " " "
5437	175.0	177.3	2.3	0.02	0.70	" " " " " "
<u>DDH J-3</u>						
5438	49.5	53.5	4.0	0.005	0.17	Chl sch; 20% qtz, fine pyr
5439	130.0	135.0	5.0	Tr		" " " " " "
5440	135.0	140.0	5.0	Tr		" " " " " "
5441	165.0	170.0	5.0	0.05	1.75	Carb-talc-sch; dk brecc; 10% fine pyr
5442	170.0	175.0	5.0	0.025	0.87	" " " " " "
5443	175.0	180.0	5.0	0.04	1.40	" " " " " "



LUN-ECHO GOLD MINES LTD
HELENA LAKE PROPERTY

LEGEND

- [Symbol] SHEARED, CARBONATED ANDESITE
- [Symbol] QUARTZ PORPHYRY
- [Symbol] GABBRO
- [Symbol] QUARTZ STRINGER ZONES
- [Symbol] BASIC LAVAS

ASSAYS
 OUNCES GOLD PER TON/FEET (G-GRAB)

SCALE 1"=100'

GEORGE B. BIRLING
 1985

BEARING S 75-00E →

SECTION 12600 N

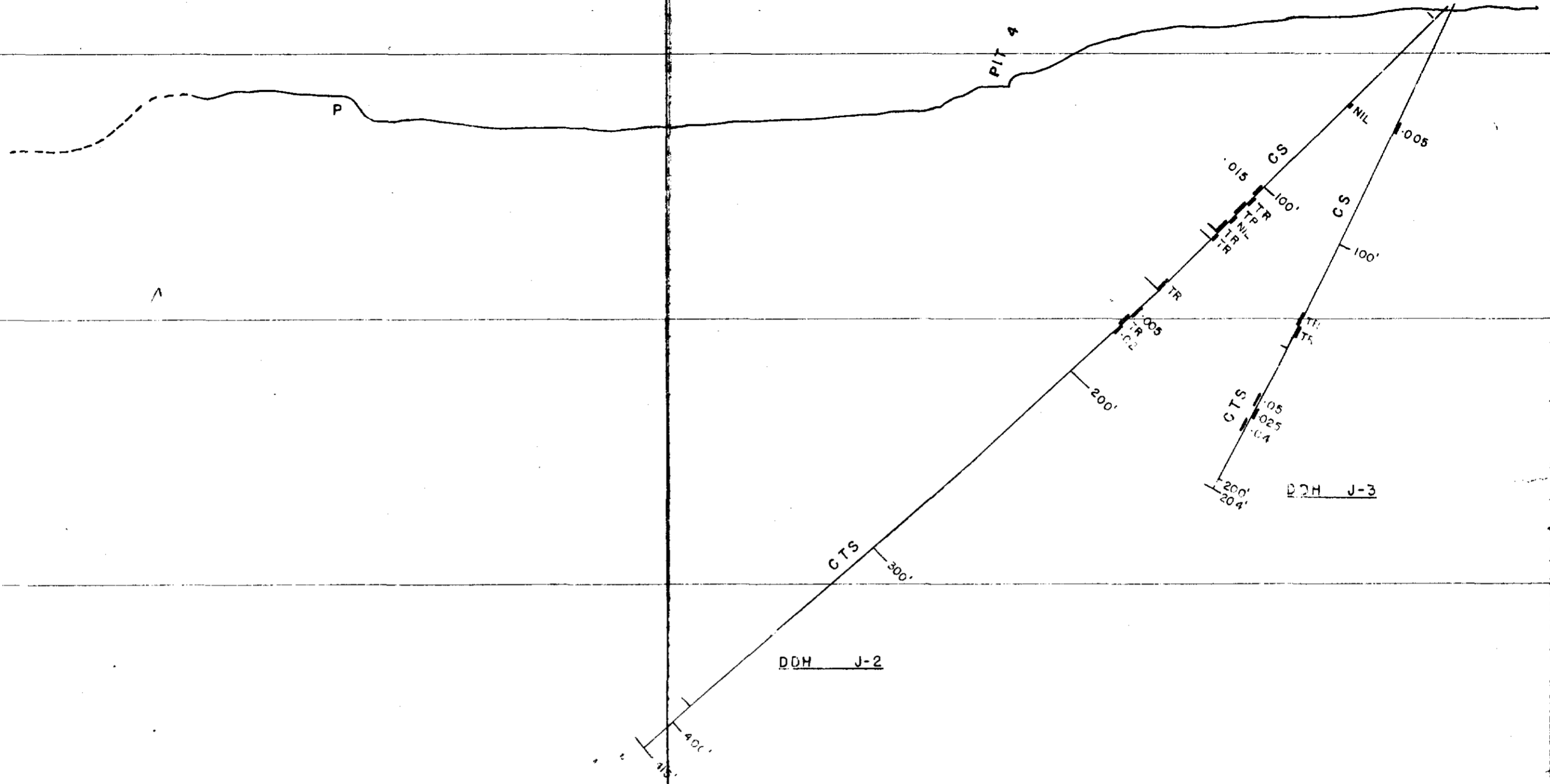
10,000.00
SURFACE

9,900.00
100' LEVEL

9,800.00
200' LEVEL

9,700.00
300' LEVEL

9,600.00
400' LEVEL



52F04SE0021 10 DASH LAKE

BASELINE