



52F05NE0018 18 ATIKWA LAKE (GRAPNEL

010

Diamond Drilling

Area of Atikwa Lake

Report NO 18

Work performed by: Green Bay Mg. & Expl.

Claim NO	Hole NO	Footage	Date	Note
K 19983	5	275'	July/56	
	6	279'	Aug/56	
	7	164'	Aug/56	
	8	719'	Aug/56	
	12	405'	Aug/56	
	23	694'	Oct/56	
K 24376	9	720'	Aug/56	
	10	148'	Aug/56	
	11	204'	Aug/56	
K 25991	13	213'	Aug/56	
	14	158'		

3977'

Notes:

K-19878

DIAMOND DRILL RECORD

PROPERTY GREEN BAY MINING & EXPLORATION - CAVIAR LAKE HOLE No. 5
 SHEET NUMBER 1 SECTION FROM _____ TO _____ STARTED JULY 1956
 LATITUDE NORTH B.L. 60 S DATUM _____ COMPLETED _____
 DEPARTURE 930 E BEARING S25°W ULTIMATE DEPTH 273'
 ELEVATION _____ DIP -30° PROPOSED DEPTH _____

DEPTH FEET	FORMATION	SAMPLE NO.	FROM	TO	WIDTH	ASSAY VALUES			
0.0 to 10.0	casing								
10.0 to 26.8	fine grained typical greyish diorite with small feldspar phenocrysts from 10-12 mineralized with fine pyrite and chalcopyrite								
26.8 to 38.1	gabbro - a darker version of the preceding diorite								
38.1 to 39.2	peridotite - a black rock, having a soft black matrix and soft lighter colored crystals, sub rounded (olivine)								
39.2 to 44.3	gabbro - med. to fine grained version of the typical local gabbro, fairly dark								
44.3 to 48.7	diorite - med. to fine gray rock, brownish gray in color with fair feldspar crystals								
48.7 to 52.4	peridotite - black rock, typical peridotite, soft								
52.4 to 68.1	gabbro - med. to fine grained, mottled dark rock								
68.1 to 77.3	peridotite - black, soft, typical peridotite, slightly schistose from 72' to 73'								
77.3 to 79.2	andesite - fine grained, fairly dark andesite, up to 10% limy in cracks & matrix - epidotized								

DIAMOND DRILL RECORD

PROPERTY GREEN BAY MINING & EXPLORATION - CAVIAR LAKE HOLE No. 5
 SHEET NUMBER 2 SECTION FROM _____ TO _____ STARTED _____
 LATITUDE _____ DATUM _____ COMPLETED _____
 DEPARTURE _____ BEARING _____ ULTIMATE DEPTH _____
 ELEVATION _____ DIP _____ PROPOSED DEPTH _____

DEPTH FEET	FORMATION	SAMPLE NO.	FROM	TO	WIDTH	ASSAY VALUES			
79.2	to 100.2	diorite - a med. to f. grained, typical diorite white phenocrysts often quite limy up to 10-15%							
100.2	to 103.8	peridotite - typical dark, soft peridotite							
103.8	to 110.0	diorite-gabbro - a darker than normal diorite, well mottled							
110.0	to 113.8	peridotite - typical, dark, soft peridotite							
113.8	to 132.1	gabbro-diorite - a fairly dark, well mottled gabbro							
132.1	to 158.2	peridotite - typical soft black peridotite, often graphitic in small fractures							
158.2	to 164.1	andesite - limy, fine grained greenish andesite							
164.1	to 171.0	diorite - a dark green, well mottled diorite							
171.0	to 175.8	andesite - slightly limy, fine grained andesite							
175.8	to 180.2	peridotite - greenish, soft peridotite with semi-rounded olivine crystals							
180.2	to 186.5	andesite - fine grained, fairly dark limy (10%) andesite							
186.5	to 200.4	peridotite - dark grey, soft peridotite							
200.4	to 201.5	andesite - fine grained medium dark andesite							

NORTHERN MINER FORM 505 REV. 754

DRILLED BY _____ SIGNED _____

DIAMOND DRILL RECORD

PROPERTY GREEN BAY MINING & EXPLORATION - CAVIAR LAKE HOLE No. 5
 SHEET NUMBER 3 SECTION FROM TO STARTED
 LATITUDE DATUM COMPLETED
 DEPARTURE BEARING ULTIMATE DEPTH
 ELEVATION DIP PROPOSED DEPTH

DEPTH FEET	FORMATION	SAMPLE NO.	FROM	TO	WIDTH	ASSAY VALUES		
201.5 to 225.6	diorite - a fine grained, fairly dark diorite, minor parts gabbroic - minor granodiorite intrusions.							
225.6 to 227.2	andesite - a fine grained, fairly dark 20% limy rock							
227.2 to 231.3	diorite - a fairly fine grained greenish diorite							
231.3 to 232.8	peridotite - black, typical peridotite							
232.8 to 267.7	gabbro-diorite - a fairly dark mottled gabbro-diorite							
267.7 to 273.0	peridotite - a black, soft, typical peridotite							
	END							

DIAMOND DRILL RECORD

PROPERTY GREEN BAY MINING & EXPLORATION - CAVIAR LAKE HOLE No. 6
 SHEET NUMBER 1 SECTION FROM _____ TO _____ STARTED Aug 1959
 LATITUDE _____ DATUM _____ COMPLETED _____
 DEPARTURE NORTH B.L. 600 BEARING SOS ULTIMATE DEPTH 279'
 ELEVATION 950 E DIP SOS 50° PROPOSED DEPTH _____

DEPTH FEET	FORMATION	SAMPLE NO.	FROM	TO	WIDTH	ASSAY VALUES			
0.0 to 18.0	casing								
18.0 to 22.5	diorite-gabbro - fairly dark, mottled diorite-gabbro. parts very dark								
22.5 to 25.0	gabbro - black mottled gabbro with minor pyrrhotite and chalcocyprite disseminations heavier @ 33'								
25.0 to 36.1	basalt - fine grained, black, parts very slightly mottled								
36.1 to 51.5	peridotite - black, typical peridotite, soft and mottled with semi-rounded olivene splashes - green asbestos (very poor fibres) in crack @ 51.0'								
51.5 to 54.6	granodiorite - a medium grained, fairly dark mottled rock with white & pink feldspars								
54.6 to 55.6	andesite - a limy (15%) f.g. dark green rock, out by calcite stringers								
55.6 to 58.0	granodiorite - a medium grained, orthoclase rich, well mottled granodiorite								
58.0 to 75.0	diorite - a fairly fine grained, mottled diorite having a tendency towards a granodiorite from 65' to 68'								

DIAMOND DRILL RECORD

PROPERTY GREEN BAY MINING & EXPLORATION - CAVIAR LAKE HOLE No. 6
 SHEET NUMBER 2 SECTION FROM _____ TO _____ STARTED _____
 LATITUDE _____ DATUM _____ COMPLETED _____
 DEPARTURE _____ BEARING _____ ULTIMATE DEPTH _____
 ELEVATION _____ DIP _____ PROPOSED DEPTH _____

DEPTH FEET	FORMATION	SAMPLE NO.	FROM	TO	WIDTH	ASSAY VALUES			
75.0	to 85.0	peridotite - a black, typical peridotite, somewhat lighter from 82' to 85' and having introduced orthoclase crystals from 73.5 to 74.5'							
85.0	to 86.8	andesite - fine grained greenish andesite with calcite stringers							
86.8	to 89.4	peridotite - black, soft, typical peridotite							
89.4	to 93.0	granodiorite - a med. grained, 30% mafic. granite-granodiorite							
93.0	to 93.9	andesite - fine grained, med. dark slightly limy andesite							
93.9	to 97.8	granodiorite - well mottled, medium to fine grained granodiorite							
97.8	to 110.0	andesite - fine grained, parts slightly porphyritic, slightly limy andesite							
110.0	to 112.7	diorite-gabbro - a medium dark, well mottled diorite with some tendency towards a peridotite							
112.7	to 114.5	basalt - dark, fine grained flow							
114.5	to 123.2	diorite - a greenish, fine grained, slightly mottled rock, cut by several calcite stringers - (parts look like a coarse andesite)							

DIAMOND DRILL RECORD

PROPERTY GREEN BAY MINING & EXPLORATION - CAVIAR LAKE HOLE No. 6

SHEET NUMBER 3 SECTION FROM _____ TO _____ STARTED _____

LATITUDE _____ DATUM _____ COMPLETED _____

DEPARTURE _____ BEARING _____ ULTIMATE DEPTH _____

ELEVATION _____ DIP _____ PROPOSED DEPTH _____

DEPTH FEET	FORMATION	SAMPLE NO.	FROM	TO	WIDTH	ASSAY VALUES		
123.2 to 134.7	andesite - a fine grained greenish andesite cut by numerous calcite stringers (gradational from the diorite) (126 to 135 has scattered orthoclase phenocrysts)							
134.7 to 137.3	diorite - a light green, fairly soft variety							
137.3 to 150.0	peridotite - black, soft, typical peridotite - contains a few small injections of granodiorite							
150.0 to 153.9	diorite - greenish, medium dark coarse grained diorite with a few calcite porphyroblasts							
153.9 to 165.7	syenite - med. grained, hornblende rich (20-30%) syenite							
165.7 to 169.0	andesite - fine grained green rock with a few hornblende phenocrysts (porphyroblasts) traces of pyrite and chalcopyrite at 167' - limy stringers							
169.0 to 195.5	syenite - hornblende rich syenite - few traces of pyrite mineralization - contains remnants of andesite							

DIAMOND DRILL RECORD

PROPERTY..... GREEN BAY MINING & EXPLORATION - CAVIAR LAKE HOLE No. 6
 SHEET NUMBER..... 4 SECTION FROM..... TO..... STARTED.....
 LATITUDE..... DATUM..... COMPLETED.....
 DEPARTURE..... BEARING..... ULTIMATE DEPTH.....
 ELEVATION..... DIP..... PROPOSED DEPTH.....

DEPTH FEET	FORMATION	SAMPLE NO.	FROM	TO	WIDTH	ASSAY VALUES			
195.5 to 204.9	andesite - fine grained dark limy rock, cut by limy stringers - clear out contact with the preceding syenite - small amounts of fepidote and pyrite mineralization - cut by stringers of syenitic material (approx. 30%) from 200.5' to 201.8' and 202.6' to 203.7' - a few specks of chalcopyrite at 202.0'								
204.9 to 207.4	syenite - a med. grained, hornblende rich syenite, with remnants of a rock that appears to have been an andesite - slightly limy								
207.4 to 222.3	andesite - fine grained, limy grey rock with many narrow calcite stringers								
222.3 to 233.0	peridotite - a greenish rock varying in texture from coarse to fine grained, mostly coarse - very fine disseminations of pyrite, pyrrhotite and chalcopyrite								
233.0 to 236.3	syenite - hornblende - rich syenite, epidotized, with remains of andesite rock up to 3" long.								
236.3 to 267.7	andesite - a darker than normal andesite, fine grained with local hornblende rich patches, possibly recrystallized cut by limy stringers and syenite stringers - coarse granite 249.8 to 250.7'								

DIAMOND DRILL RECORD

PROPERTY GREEN BAY MINING & EXPLORATION - CAVIAR LAKE HOLE No. 7
 SHEET NUMBER 1 SECTION FROM _____ TO _____ STARTED Aug 1956
 LATITUDE NORTH B.L. 605 DATUM _____ COMPLETED _____
 DEPARTURE 9300 BEARING S76°W ULTIMATE DEPTH 164'
 ELEVATION _____ DIP 30° PROPOSED DEPTH _____

DEPTH FEET	FORMATION	SAMPLE NO.	FROM	TO	WIDTH	ASSAY VALUES		
0.0 to 4.0	casing							
4.0 to 26.5	diorite - coarse grained diorite, minor mineralization from 9' to 14' pyrrhotite and chalcopyrite							
26.5 to 30.0	andesite - a fine grained dark rock, lighter and silicified over small patches (probably a finer grained variety of diorite)							
30.0 to 31.4	diorite - med. to coarse grained diorite							
31.4 to 32.4	andesite - fine grained dark rock							
32.4 to 33.3	diorite - med. to coarse grained diorite							
33.3 to 46.9	andesite - fine grained dark rock - traces of mineralization, pyrite and pyrrhotite @ 34.0' - heavy sulphide mineralization in coarser diorite - 1" @ 41.4' about 30% pyrrhotite and chalcopyrite							
46.9 to 47.7	syenite to granodiorite - a white syenite with 10% hornblende. very slight pyrite & pyrrhotite mineralization - has inclusion of andesite material							

DIAMOND DRILL RECORD

PROPERTY GREEN BAY MINING & EXPLORATION - CAVIAR LAKE HOLE No. 7
 SHEET NUMBER 2 SECTION FROM _____ TO _____ STARTED _____
 LATITUDE _____ DATUM _____ COMPLETED _____
 DEPARTURE _____ BEARING _____ ULTIMATE DEPTH _____
 ELEVATION _____ DIP _____ PROPOSED DEPTH _____

DEPTH FEET	FORMATION	SAMPLE NO.	FROM	TO	WIDTH	ASSAY VALUES		
47.7 to 53.0	diorite - a medium to coarse grained mottled diorite with small patches of chalcopyrite - minor granodioritic inclusions							
53.0 to 63.9	peridotite - a fairly dark rock having a soft dark pyroxene matrix and with lighter olivene sub rounded crystals							
63.9 to 66.4	syenite - med. grained syenite having remnants of more mafic rock (diorite)							
66.4 to 69.4	diorite - med. grained diorite with minor limy andesitic sections, minor syenitization							
69.4 to 70.2	syenite - med. grained, pink and white feldspar crystals							
70.2 to 72.2	diorite - fine grained diorite, varying from an andesitic-looking rock to a typical fine grained diorite - blobs of pyrrhotite and chalcopyrite at 74.5'.							
72.2 to 87.0	andesite - a fine grained dark rock with a few crystals of hornblende - slightly limy, minor quartz @ 83.5' to 84.5' - good contact with the succeeding syenite.							

DIAMOND DRILL RECORD

PROPERTY GREEN BAY MINING & EXPLORATION - CAVIAR LAKE HOLE No. 8
 SHEET NUMBER 1 SECTION FROM _____ TO _____ STARTED Aug 1956
 LATITUDE NORTH BL. 60 S DATUM Caviar 30" COMPLETED _____
 DEPARTURE 9°30 E BEARING test @ 300' - 33 degrees
test @ 650' - 28 degrees ULTIMATE DEPTH 719'
 ELEVATION _____ DIP 550° W PROPOSED DEPTH _____

DEPTH FEET	FORMATION	SAMPLE NO.	FROM	TO	WIDTH	ASSAY VALUES	
							Cu. NI
0.0 to 7.0	casing						
7.0 to 16.0	diorite - a medium to fine grained rock, green-grey in color, rusty from 7'-10' mineralized sparsely along the full length of this section with pyrite, pyrrhotite and chalcopyrite						
16.0 to 26.0	gabbro - a medium grained darker version of the preceding diorite - sparsely mineralized with pyrite & pyrrhotite						
26.0 to 30.7	diorite - medium grained to f.g., greenish diorite, mineralized sparsely with pyrrhotite, pyrite & chalcopyrite						
30.7 to 36.0	diorite (mineralized) - as above but mineralized with a total of about 50% sulphides, pyrrhotite, chalcopyrite & minor pyrite.	1228				0.10	0.1

DIAMOND DRILL RECORD

PROPERTY..... GREEN BAY MINING & EXPLORATION - CAVIAR LAKE HOLE No. 8
 SHEET NUMBER..... 2 SECTION FROM..... TO..... STARTED.....
 LATITUDE..... DATUM..... COMPLETED.....
 DEPARTURE..... BEARING..... ULTIMATE DEPTH.....
 ELEVATION..... DIP..... PROPOSED DEPTH.....

DEPTH FEET	FORMATION	SAMPLE NO.	FROM	TO	WIDTH	ASSAY VALUES	
						Cu.	Ni
35.0 to 50.0	diorite - a fairly fine gr. greenish-grey diorite.						
50.0 to 78.8	gabbro - this rock is gradational from the preceding diorite - the texture is much the same, but it is considerably darker, the mafics (pyroxene) being black, has minor pyrrhotite & chalcopryrite disseminations throughout						
78.8 to 80.7	gabbro (mineralized) - rock similar to preceding gabbro but mineralized with less than 5% sulphides, pyrrhotite and chalcopryrite	1225				0.08	0.1
80.7 to 81.9	gabbro - the same as the preceding gabbro						

DIAMOND DRILL RECORD

PROPERTY GREEN BAY MINING & EXPLORATION - CAVIAR LAKE HOLE No. 8
 SHEET NUMBER 2 SECTION FROM TO STARTED
 LATITUDE DATUM COMPLETED
 DEPARTURE BEARING ULTIMATE DEPTH
 ELEVATION DIP PROPOSED DEPTH

DEPTH FEET	FORMATION	SAMPLE NO.	FROM	TO	WIDTH	ASSAY VALUES		
						Co.	Cu.	Ni
81.9 to 83.0	gabbro (mineralized)- gabbro as above but mineralized, about 2% total sulphides, pyrrhotite & pyrite	1226						0.1
83.0 to 90.0	gabbro - a dark version of the above rock							
90.0 to 98.0	gabbro-diorite - a medium dark version of the above rock							
98.0 to 98.7	diorite (mineralized)-diorite mineralized about 5% total sulphides mostly pyrrhotite, minor chalcopyrite & pyrite	1227				spot neg.	0.10	0.2
98.7 to 109.5	diorite - a slightly darker than average diorite with small amounts of pyrrhotite and chalcopyrite disseminations							

DIAMOND DRILL RECORD

PROPERTY GREEN BAY MINING & EXPLORATION - CAVIAR LAKE HOLE No. 8
 SHEET NUMBER 3 SECTION FROM _____ TO _____ STARTED _____
 LATITUDE _____ DATUM _____ COMPLETED _____
 DEPARTURE _____ BEARING _____ ULTIMATE DEPTH _____
 ELEVATION _____ DIP _____ PROPOSED DEPTH _____

DEPTH FEET	FORMATION	SAMPLE NO.	FROM	TO	WIDTH	ASSAY VALUES		
109.5 to 117.5	peridotite - a very dark soft rock, has crystals of sub rounded lighter olivene and darker pyroxene							
117.5 to 131.0	peridotite - a fairly f.g. rock, grey, very soft - could be a lighter variety of the preceding peridotite							
131.0 to 139.3	andesite - a fine grained greenish rock, cut by calcite stringers from 137' to 139'							
139.3 to 178.1	peridotite - a fairly dark, very soft rock, having a dark pyroxene matrix and lighter sub-rounded crystals of olivene - chloritic in some fractures							
178.1 to 201.5	andesite - a fine grained fairly dark rock, very slight pyrrhotite mineralization, has a few bands of syenite, all less than 2" in width, negligible amounts of calcite							
201.5 to 203.2	syenite - a grey mottled rock, mostly feldspar white & pink and hornblende							
203.2 to 210.0	andesite with minor syenite stringers							
210.0 to 210.2	andesite, mineralized about 8% pyrrhotite and chalcopryite							

NORTHERN MINER FORM 505 REV./54

DRILLED BY _____ SIGNED _____

DIAMOND DRILL RECORD

PROPERTY GREEN BAY MINING & EXPLORATION - CAVIAR LAKE HOLE No. 8
 SHEET NUMBER 4 SECTION FROM _____ TO _____ STARTED _____
 LATITUDE _____ DATUM _____ COMPLETED _____
 DEPARTURE _____ BEARING _____ ULTIMATE DEPTH _____
 ELEVATION _____ DIP _____ PROPOSED DEPTH _____

DEPTH FEET	FORMATION	SAMPLE NO.	FROM	TO	WIDTH	ASSAY VALUES			
210.2 to 212.8	andesite cut by about 50% syenite stringers								
212.8 to 221.8	andesite - fine grained grey rock, cut by about 5% quartz syenite stringers								
221.8 to 222.9	syenite - a hornblende rich syenite intruded into andesite with about 5% mineralization, chalcopyrite and pyrrhotite								
222.9 to 246.3	andesite - a fine grained, grey rock, slightly limy, cut by granitic and syenitic stringers up to 6" wide								
246.3 to 247.4	granite - a hornblende rich granite - the contacts are sharp but parts in the centre are quite dark with hornblende, apparently being enriched from the surrounding andesite - fine to coarse grained								
247.4 to 258.5	andesite - a fine grained fairly dark rock, cut by epidote stringers and epidotized granite								
258.5 to 264.0	diorite - a fine grained, dark rock, only slightly coarser than the preceding andesite and is probably an altered phase of that rock, rock seems to be coarser grained where it is cut by syenite stringers								

DIAMOND DRILL RECORD

PROPERTY **GREEN BAY MINING & EXPLORATION - CAVIAR LAKE** HOLE No. **8**
 SHEET NUMBER **5** SECTION FROM TO STARTED
 LATITUDE DATUM COMPLETED
 DEPARTURE BEARING ULTIMATE DEPTH
 ELEVATION DIP PROPOSED DEPTH

DEPTH FEET	FORMATION	SAMPLE NO.	FROM	TO	WIDTH	ASSAY VALUES			
264.0 to 314.0	andesite - a fine grained, fairly dark, greenish, limy rock with minor syenite inclusions - 2" quartz at 268' and 275', 4" quartz at 280' and with epidote stringers								
314.0 to 316.7	andesite - same as above, but cut by a series of grey granite stringers								
316.7 to 321.8	andesite - a fine grained fairly dark rock								
321.8 to 324.6	granodiorite - grey rock, containing about 25% mafic rocks, 45% white feldspar, 25% quartz & 5% pink feldspar. Parts have only minor quartz & might be called a quartz syenite or a granodiorite								
324.6 to 330.6	andesite - a fairly dark fine grained andesite cut by granodiorite bands up to 6" wide								
330.6 to 331.9	granodiorite - med. to coarse grained rock containing approx. 5% pink feldspar, 40% white feldspar, 20% quartz and 35% mafics - contacts are clean cut								
331.9 to 378.7	andesite - a fine grained, fairly dark rock, cut by stringers of a granodiorite composition, the stringers being up to 5" in width - heavily epidotized granodiorite from 36.0' to 136.5'. Some parts after 360' cut by fine limy stringers. contacts are quite regular.								
378.7 to 381.3	granodiorite-syenite - a fairly fine grained rock, fairly high in mafic content & containing some andesite inclusions - orthoclase content approx. 10-15%. This should probably be called a syenite to differentiate it from some of the more basic intrusives which have been classified as granodiorites.								

DIAMOND DRILL RECORD

PROPERTY **GREEN BAY MINING & EXPLORATION - CAVIAR LAKE** HOLE No. **8**
 SHEET NUMBER **5** SECTION FROM TO STARTED
 LATITUDE DATUM COMPLETED
 DEPARTURE BEARING ULTIMATE DEPTH
 ELEVATION DIP PROPOSED DEPTH

DEPTH FEET	FORMATION	SAMPLE NO.	FROM	TO	WIDTH	ASSAY VALUES		
381.3 to 415.6	andesite - a fine green grey rock, cut by many (15%) syenite granodiorite cross stringers, mostly 1" to 3" in width. A lot of the syenite has epidote stringers and some epidote occurs in the andesite itself - from 405' to 415' is cut by limy stringers.							
415.6 to 417.0	granite - a med. grained almost porphyritic granite, well epidotized - has a lot of fine (andesite) scattered through it.							
417.0 to 420.0	andesite - a fine grained greenish grey rock cut by fine limy stringers and is slightly epidotized.							
420.0 to 424.3	andesite porphyry - a fine grained dark rock with abundant feldspar porphyries up to 1/16" across - smaller hornblende crystals are also noted in the darker matrix.							
424.3 to 442.7	andesite - a fine grained, fairly dark rock, cut by many epidote stringers from 428' to 430' and a few limy stringers and a few syenite injections up to 2" in width.							
442.7 to 443.9	granodiorite - a medium grained rock, 25% mafic with many irregular contacts with andesite.							
443.9 to 456.1	andesite porphyry - a fine grained light green rock spotted with many fine feldspar crystals and is extremely limy (20-30%) cut by few epidote stringers.							

DIAMOND DRILL RECORD

PROPERTY GREEN BAY MINING & EXPLORATION - CAVIAR LAKE HOLE No. 8

SHEET NUMBER 7 SECTION FROM _____ TO _____ STARTED _____

LATITUDE _____ DATUM _____ COMPLETED _____

DEPARTURE _____ BEARING _____ ULTIMATE DEPTH _____

ELEVATION _____ DIP _____ PROPOSED DEPTH _____

DEPTH FEET	FORMATION	SAMPLE NO.	FROM	TO	WIDTH	ASSAY VALUES			
456.1 to 492.7	andesite - a fine grained but darker than previous andesite cut by many limy stringers and epidote stringers which seem to be often associated in the same cracks. Also cut by minor granodiorite stringers (from 511.5 to 513.5 granodiorite 50%)								
492.7 to 497.7	andesite porphyry - a fine grained light green rock, spotted with numerous small feldspar crystals, quite limy in spots and cut by several limy & epidote stringers.								
497.7 to 506.2	syenite - a typical syenite (with about 40% andesite med. grained & epidotized broken ground at 501' - faulty).								
506.2 to 533.8	andesite - a greyish to green fine grained rock, parts rich in calcite stringers cut by quartz vein about 4" wide @ 508' and the area is silicified for about a foot on each side of the vein.								
533.8 to 545.2	syenite-andesite - a fine grained andesite cut by about 50% syenite, both rocks are epidotized.								
545.2 to 550.0	syenite - a typical syenite, medium to fine grained, epidotized and having small patches of andesite as remnants and inclusions.								
550.0 to 563.5	andesite - a fine grained, fairly dark rock cut by syenite stringers, up to 1' wide, regular contacts - parts coarser grained - chloritic slip along core from 550' to 561'								

DIAMOND DRILL RECORD

PROPERTY GREEN BAY MINING & EXPLORATION - CAVIAR LAKE HOLE No. 8
 SHEET NUMBER 8 SECTION FROM _____ TO _____ STARTED _____
 LATITUDE _____ DATUM _____ COMPLETED _____
 DEPARTURE _____ BEARING _____ ULTIMATE DEPTH _____
 ELEVATION _____ DIP _____ PROPOSED DEPTH _____

DEPTH FEET	FORMATION	SAMPLE NO.	FROM	TO	WIDTH	ASSAY VALUES			
563.5 to 567.8	syenite - a medium to fine grained syenite with about 1 1/2' section of andesite 565' to 566.5'								
567.8 to 582.0	andesite - a coarser than normal andesite cut by a few granite to syenite stringers								
582.0 to 584.2	syenite - a medium grained syenite								
584.2 to 586.8	andesite - a fine grained greenish rock - epidotised								
586.8 to 596.1	syenite - a medium grained syenite								
596.1 to 599.7	granodiorite - a well mottled, fine grained rock approaching a diorite in composition but having small amounts of orthoclase - rock is much finer grained than the typical diorite in this vicinity								
599.7 to 601.3	syenite - typical medium grained syenite								
601.3 to 647.0	andesite - a fine grained (some coarser grained) greenish grey rock, cut by syenite stringers up to 8" wide and cut by a few limy stringers. hornblende crystals sometimes seen in a much finer grained matrix - minor epidote.								
647.0 to 649.2	syenite - a med. grained quartz syenite (with about 30% andesite inclusions)								
649.2 to 650.3	andesite - fine grained green rock, cut by about 30% syenite								

DIAMOND DRILL RECORD

PROPERTY GREEN BAY MINING & EXPLORATION - CAVIAR LAKE HOLE No. 8
 SHEET NUMBER 9 SECTION FROM TO STARTED
 LATITUDE DATUM COMPLETED
 DEPARTURE BEARING ULTIMATE DEPTH
 ELEVATION DIP PROPOSED DEPTH

DEPTH FEET	FORMATION	SAMPLE NO.	FROM	TO	WIDTH	ASSAY VALUES			
650.3 to 651.5	syenite - a fairly fine grained syenite - good clean cut contacts with andesite								
651.5 to 652.8	andesite - a fine grained, greenish rock with a few sub-developed crystals of hornblende - limy stringers.								
652.8 to 655.0	syenite - medium grained syenite with about 20% hornblende - limy in small cracks.								
655.0 to 662.5	andesite - a coarser than average, greenish andesite, very slightly limy - good clean cut contact with the syenite.								
662.5 to 671.8	syenite - a fairly fine grained rock, about 90% feldspar (pink and white)								
671.8 to 675.2	andesite - a fine grained greenish rock, cut by a few limy stringers.								
675.2 to 677.7	rhyolite - a fine grained grey rock with many poorly formed feldspar crystals - slight greenish stain noted at 677' but not identified. This rock is probably a phase of the following syenite.								
677.7 to 700.4	syenite - a fairly fine grained variety of a typical syenite.								
700.4 to 716.0	andesite - a fine grained, fairly dark, sl. limy andesite, porphyritic from 706' to 708'								
716.0 to 717.6	syenite - a med. grained quartz syenite								

DIAMOND DRILL RECORD

PROPERTY GREEN BAY MINING & EXPLORATION - CAVIAR LAKE HOLE No. 9
 SHEET NUMBER 1 SECTION FROM _____ TO _____ STARTED Aug 1956
 LATITUDE NORTH B.C. S005 DATUM _____ COMPLETED _____
 DEPARTURE S50E BEARING S75°W ULTIMATE DEPTH 720'
 ELEVATION _____ DIP -25° PROPOSED DEPTH _____

DEPTH FEET	FORMATION	SAMPLE NO.	FROM	TO	WIDTH	ASSAY VALUES			
0.0 to 22.0	casing								
22.0 to 45.9	andesite - a fairly dark fine grained rock, with a few well developed hornblende crystals giving it a darker, slightly mottled appearance.								
45.9 to 53.0	diorite - slightly limy diorite, not typical of this area, parts resembling an andesite porphyry.								
53.0 to 56.5	andesite - a fairly dark fine grained rock with some fairly well developed hornblende crystals - poor, broken up ground from 62' to 63'								
56.5 to 73.3	diorite - a dark, mottled diorite - this rock appears to be a coarser grained phase of the andesite, contacts being gradational and arbitrary. Both rocks could be properly identified as amphibolites (hornblendites)								
73.3 to 113.0	andesite - a fairly fine grained rock with some hornblende crystals.								
113.0 to 156.0	diorite-gabbro - a well mottled, very dark rock - could almost be classified as a hornblendite - is slightly rusty from 155' to 157'.								
156.0 to 163.6	andesite - a light green, fine grained rock silicified - has a few specks of native copper @ 156'.								
163.5 to 200.0	diorite - mottled, fairly dark rock (mineralized 65% total sulphides, pyrrhotite and chalcopyrite 165.2 to 165.8)								

DIAMOND DRILL RECORD

PROPERTY GREEN BAY MINING & EXPLORATION - CAVIAR LAKE HOLE No. 9
 SHEET NUMBER 2 SECTION FROM _____ TO _____ STARTED _____
 LATITUDE _____ DATUM _____ COMPLETED _____
 DEPARTURE _____ BEARING _____ ULTIMATE DEPTH _____
 ELEVATION _____ DIP _____ PROPOSED DEPTH _____

DEPTH FEET	FORMATION	SAMPLE NO.	FROM	TO	WIDTH	ASSAY VALUES		
200.0 to 240.0	andesite - a fine grained gray rock, slightly mottled with a few hornblende crystals (on being split open this core is seen to be more accurately defined as a fine grained diorite, being also hornblende rich-trace of chalcopyrite @ 239.6'							
240.0 to 250.0	diorite - a well mottled, limy, light green diorite - min. traces chalcopyrite from 245.7 to 246.0', traces pyrrhotite and chalcopyrite @ 247.5'							
250.0 to 278.1	diorite - a medium to coarse grained diorite, not limy, having almost a granodioritic composition over small footages.							
278.1 to 284.3	syenite - a medium grained, hornblende rich quartz syenite, cut by several epidote stringers.							
284.3 to 298.8	diorite - a fine grained diorite, parts well mottled							
298.8 to 310.9	andesite - a fine grained, fairly dark rock - is more of an andestic nature than rocks previously called andesite.							
310.9 to 320.4	diorite - a med. grained, well mottled diorite, tending towards a granodiorite out by granitic stringers.							
320.4 to 323.3	andesite - a fine grained fairly dark rock							
323.3 to 351.0	diorite - a diorite, varying from a slightly mottled to a well mottled rock with a few syenitic stringers & in places a few orthoclase crystals in the diorite (i.e. with a tendency towards granodiorite)							

DIAMOND DRILL RECORD

PROPERTY GREEN BAY MINING & EXPLORATION - CAVIAR LAKE HOLE No. 9
 SHEET NUMBER 3 SECTION FROM _____ TO _____ STARTED _____
 LATITUDE _____ DATUM _____ COMPLETED _____
 DEPARTURE _____ BEARING _____ ULTIMATE DEPTH _____
 ELEVATION _____ DIP _____ PROPOSED DEPTH _____

DEPTH FEET	FORMATION	SAMPLE NO.	FROM	TO	WIDTH	ASSAY VALUES		
351.0 to 367.0	diorite - as above, but cut by syenite stringers, syenite being about 30% of total							
367.0 to 369.8	diorite - a medium grained, mottled diorite with a few syenite stringers							
369.8 to 377.7	andesite porphyry - a fine grained greenish rock with many very fine light green crystals cut by epidote and syenite stringers and slightly limy.							
377.7 to 384.6	andesite - a fine grained green rock, cut by epidote stringers							
384.6 to 395.5	diorite - a fine grained, mottled diorite cut by minor syenite stringers							
395.5 to 401.6	andesite - a fine grained light green rock, slightly porphyritic.							
401.6 to 415.2	diorite - a fine to med. grained mottled diorite.							
415.2 to 425.0	andesite porphyry - a fine grained greenish rock with many lighter green crystals - cut by limy stringers							
425.0 to 537.4	diorite - a fairly dark mottled diorite cut by epidote stringers and some syenite (1" quartz vein @ 432.7') - small section very slightly gneissic at 440' - very scattered pyrite disseminations. 4" quartz @ 457' - 6" quartz @ 465.5 - other small quartz stringers scattered.							
537.4 to 540.4	syenite-diorite - previous diorite cut by about 50% fairly fine grained syenite							
540.4 to 541.9	diorite - a medium grained, well mottled, limy diorite							

DIAMOND DRILL RECORD

PROPERTY **GREEN BAY MINING & EXPLORATION - CAVIAR LAKE** HOLE No. **9**

SHEET NUMBER **4** SECTION FROM TO STARTED

LATITUDE DATUM COMPLETED

DEPARTURE BEARING ULTIMATE DEPTH

ELEVATION DIP PROPOSED DEPTH

DEPTH FEET	FORMATION	SAMPLE NO.	FROM	TO	WIDTH	ASSAY VALUES			
541.9 to 544.0	syenite - a fairly fine grained quartz syenite								
544.0 to 550.0	diorite - a medium grained, mottled limy diorite								
550.0 to 551.7	rhyolite - a fine grained grey to white rock - white splotches are quartz, rest of rock is hard and siliceous.								
551.7 to 554.0	syenite - a fine grained syenite with about 50% inclusions of diorite								
554.0 to 557.3	andesite - a fine grained green rock.								
557.3 to 561.6	andesite - a fine grained rock, as above, but much darker, cut by calcite stringers (20%) and with recrystallized hornblende crystals.								
561.6 to 563.3	andesite - a fine grained green rock, few calcite stringers.								
563.3 to 566.0	diorite - a med. grained mottled limy diorite								
566.0 to 567.4	syenite - a med. grained syenite, cut by calcite stringers								
567.4 to 569.0	diorite - a med. grained, mottled diorite								
569.0 to 574.7	andesite - a fine grained, bright green rock with black porphyries from 570'-572'								
574.7 to 578.0	syenite - a very fine grained, siliceous rock.								

DIAMOND DRILL RECORD

PROPERTY GREEN BAY MINING & EXPLORATION - CAVIAR LAKE HOLE No. 9
 SHEET NUMBER 5 SECTION FROM _____ TO _____ STARTED _____
 LATITUDE _____ DATUM _____ COMPLETED _____
 DEPARTURE _____ BEARING _____ ULTIMATE DEPTH _____
 ELEVATION _____ DIP _____ PROPOSED DEPTH _____

DEPTH FEET	FORMATION	SAMPLE NO.	FROM	TO	WIDTH	ASSAY VALUES			
578.0 to 595.6	diorite - a medium grained, greenish, well mottled diorite - cut by a few syenite stringers.								
595.6 to 598.7	syenite - a med. grained quartz syenite, with a few epidote stringers.								
598.7 to 628.0	diorite - a med. grained well mottled diorite, cut by a few syenite stringers.								
628.0 to 628.5	syenite - a fine grained syenite.								
628.5 to 642.3	andesite - a fine grained dark green rock cut by numerous calcite and some narrow quartz stringers.								
642.3 to 655.0	andesite - same as previous andesite, but with much more calcite and quartz *FAULT ZONE Some epidote. individual stringers are seen to be faulted and folded.								
655.0 to 720.0	andesite - a fine grained green rock (in minor parts basalt) cut by many calcite and syenite stringers. (1' syenite @ 686')								
	END								

DIAMOND DRILL RECORD

PROPERTY GREEN BAY MINING & EXPLORATION - CAVIAR LAKE HOLE No. 10
 SHEET NUMBER 1 SECTION FROM _____ TO _____ STARTED Aug-1956
 LATITUDE NORTH B.C. 121.5 DATUM _____ COMPLETED _____
 DEPARTURE 700 ~~700~~ E BEARING N 27° E ULTIMATE DEPTH 148'
 ELEVATION _____ DIP -30° PROPOSED DEPTH _____

DEPTH FEET	FORMATION	SAMPLE NO.	FROM	TO	WIDTH	ASSAY VALUES	
0.0 to 9.0	casing						
9.0 to 35.2	hornblendite - a fine grained to very fine grained rock, dark to black and being composed mainly of hornblende crystals - some is of an andesitic nature and the rock is thought to have been andesite originally - cut by very minor syenite intrusions - from 25' to 35' rock is more mottled.						
35.2 to 36.9	syenite - a fine grained quartz syenite						
36.9 to 47.5	hornblendite - a very dark, slightly mottled rock. mineralized with a few specks of chalcopyrite and pyrrhotite at 43.5'						
47.5 to 50.0	hornblendite (mineralized) - as above, mineralized with pyrite, pyrrhotite and chalcopyrite, sulphide content 5%	1234				nil	0.1
50.0 to 54.0	hornblendite (mineralized - as above mineralized with pyrite, pyrrhotite and chalcopyrite, sulphide content 10%	1233				0.35	0.
54.0 to 70.0	hornblendite - as above, more mottled than previously, very dark to black						
70.0 to 86.3	andesite - a dark, fine grained rock, cut by coarse granite stringers						
86.3 to 87.7	granite - a medium grained granite with 30% andesite included.						

DIAMOND DRILL RECORD

PROPERTY GREEN BAY MINING & EXPLORATION - CAVIAR LAKE HOLE No. 11
 SHEET NUMBER 1 SECTION FROM _____ TO _____ STARTED Aug 1956
 LATITUDE NORTH B.L. 1215 DATUM _____ COMPLETED _____
 DEPARTURE 700 ~~115~~ E BEARING N 27° E ULTIMATE DEPTH 204'
 ELEVATION _____ DIP -50° PROPOSED DEPTH _____

DEPTH FEET	FORMATION	SAMPLE NO.	FROM	TO	WIDTH	ASSAY VALUES			
0.0 to 3.0	casing								
3.0 to 25.0	hornblendite - a grey fairly fine grained rock with visible hornblende crystals sprinkled with small flecks of disseminated pyrrhotite and chalcocopyrite - @ 18' there is about 1" of core, containing about 40% chalcocopyrite and minor pyrrhotite.								
25.0 to 67.7	diorite - rock is fairly similar to the preceding hornblendite but is much more mottled and mineralized very sparsely - has a little syentic intrusion at 43'								
67.7 to 80.4	andesite - a fine grained to mottled bright green rock with some pyrrhotite mineralization from 70' to 73' - mineralized about 5% pyrrhotite and chalcocopyrite from 76.2' to 76.9'.								
80.4 to 81.6	andesite mineralized - as above, mineralized with pyrrhotite and chalcocopyrite - sulphide content about 25% - dimethyl positive #1236								
81.6 to 84.5	hornblendite - a light green, slightly mottled rock, slightly limy and with good hornblende crystals.								
84.5 to 86.2	granodiorite - a medium grained, well mottled rock								
86.2 to 123.0	andesite - a fine grained greenish rock, slightly limy and cut by epidote stringers - has a few syenite injections - parts lightly mottled by hornblende crystals.								
123.0 to 124.2	granite - a fairly fine grained granite, the feldspars having a tendency to be porphyritic.								

DIAMOND DRILL RECORD

PROPERTY GREEN BAY MINING & EXPLORATION - CAVIAR LAKE HOLE No. 12
 SHEET NUMBER 1 SECTION FROM _____ TO _____ STARTED Aug 1956
 LATITUDE NORTH 75.5 E DATUM _____ COMPLETED _____
B.L.
 DEPARTURE 55 BEARING S45° E ULTIMATE DEPTH 105'
 ELEVATION _____ DIP 35° PROPOSED DEPTH _____

DEPTH FEET	FORMATION	SAMPLE NO.	FROM	TO	WIDTH	ASSAY VALUES		
0.0	to 20.0	casing						
20.0	to 36.7	granodiorite - a medium to fine grained rock, white & pink feldspars, some quartz, fairly well mottled - cut by a few limy stringers - major mass is actually a greyish granite - granodiorite cut by narrow seams of granitic dykes having an abundance of orthoclase and being epidotized. some andesitic material appears as inclusions.						
36.7	to 40.0	andesite - a fine grained green rock cut by a few fine calcite stringers.						
40.0	to 40.8	syenite - rock varies from very fine grained to med. grained syenite, at times being almost a felsite.						
40.8	to 45.3	diorite - a fine grained greenish diorite with good feldspar laths giving a mottled appearance.						
45.3	to 46.9	andesite-syenite - a 50-50 mixture of typical andesite and quartz syenite						
46.9	to 49.8	andesite - a fine grained fairly dark green rock, cut by a few calcite stringers - some narrow syenite injections.						
49.8	to 52.8	diorite - a fine to med. grained greenish diorite includes a section of rock which looks like the peridotite but is much lighter in color and somewhat greener - 6" grey granite @ 60.5' - min. minor pyrrhotite.						
52.8	to 53.4	andesite - a fine grained fairly dark rock.						

DIAMOND DRILL RECORD

PROPERTY..... GREEN BAY MINING & EXPLORATION - CAVIAR LAKE HOLE No. 12
 SHEET NUMBER..... 2 SECTION FROM..... TO..... STARTED.....
 LATITUDE..... DATUM..... COMPLETED.....
 DEPARTURE..... BEARING..... ULTIMATE DEPTH.....
 ELEVATION..... DIP..... PROPOSED DEPTH.....

DEPTH FEET	FORMATION	SAMPLE NO.	FROM	TO	WIDTH	ASSAY VALUES		
53.4 to 63.3	diorite - a fine grained to a very fine grained diorite with good feldspar lath-cut by a few syentic injections							
63.3 to 66.1	andesite - a fine grained grey rock with a few syenite stringers.							
66.1 to 75.0	diorite - a medium to fine grain greenish well mottled diorite with some grey granite injections(2', 50-60 diorite granite from 66'-70')							
75.0 to 80.9	rhyolite porphyry - has numerous white feldspar crystals well developed in a greyish fine grained matrix - cut by a strong fracture at about 90 degrees to core - some epidote in fracture - is thought to be a phase of the syenite.							
80.9 to 120.8	diorite - a very fine grained, grayish diorite, slightly mineralized with pyrite and pyrrhotite, cut by a few grey granite stringers up to 6" wide.							
120.8 to 121.8	andesite - a fine grained dark rock, andesite (to basalt)							
121.8 to 125.6	diorite - a med. to fine grained, slightly mottled							
125.6 to 127.3	andesite - a fine grained greenish to dark rock							
127.3 to 132.7	peridotite - has some similarity to the fine grained diorite but is considerably darker. On breaking open the rock, it is seen to contain a heavy concentration of dark very soft crystals, easily scratched with a knife - chloritic fracture or slip at 128.5' - grades into gabbro to diorite							
132.7 to 138.1	diorite-gabbro - a med. to fine gr. mottled, dark green diorite to gabbro.							

NORTHERN MINER FORM 505 REV.754

DRILLED BY.....

SIGNED.....

DIAMOND DRILL RECORD

PROPERTY GREEN BAY MINING & EXPLORATION - CAVIAR LAKE HOLE No. 12
 SHEET NUMBER 3 SECTION FROM TO STARTED
 LATITUDE DATUM COMPLETED
 DEPARTURE BEARING ULTIMATE DEPTH
 ELEVATION DIP PROPOSED DEPTH

DEPTH FEET	FORMATION	SAMPLE NO.	FROM	TO	WIDTH	ASSAY VALUES			
138.1 to 139.7	granodiorite - a med. to fine grained mottled hornblende granodiorite								
139.7 to 141.7	peridotite - a dark rock with light, slightly rounded splashes (olivine). Green asbestos fibres in fractures which are at about 20 degrees to the core								
141.7 to 143.0	granodiorite - a med. grained mottled, hornblende granodiorite.								
143.0 to 150.3	peridotite - a dark rock, as above, parts with a soapy feel, very soft and with some short green asbestos fibres in fractures - lighter mineral forms in blebs & sometimes laths, semi rounded.								
150.3 to 174.4	gabbro - a very dark rock, being somewhat similar to the preceding peridotite in appearance but the lighter materials are euhedral rather than sub rounded and quite hard, presumably being plagioclase. Rock has a typical mottled gabbroic appearance - some sections approach a diorite in appearance but over very short sections.								
174.4 to 175.6	granodiorite - a typical, well mottled med. grained granodiorite.								
175.6 to 176.7	peridotite - not typical, but having no plagioclase - dark.								
176.7 to 178.4	diorite - fine grained, greenish brown diorite.								
178.4 to 184.0	peridotite - black, typical peridotite, small sections varying to gabbro.								

DIAMOND DRILL RECORD

PROPERTY GREEN BAY MINING & EXPLORATION - CAVIAR LAKE HOLE No. 12

SHEET NUMBER 4 SECTION FROM _____ TO _____ STARTED _____

LATITUDE _____ DATUM _____ COMPLETED _____

DEPARTURE _____ BEARING _____ ULTIMATE DEPTH _____

ELEVATION _____ DIP _____ PROPOSED DEPTH _____

DEPTH FEET	FORMATION	SAMPLE NO.	FROM	TO	WIDTH	ASSAY VALUES			
184.0 to 191.4	diorite - a fine grained greenish brown diorite mineralized with a few specks of pyrrhotite and pyrite @ 190'.								
191.4 to 199.0	peridotite - black to very dark in color, finer grained than typical peridotite short sections varying to gabbro.								
199.0 to 206.9	diorite - a greenish, well mottled med. grained diorite.								
206.9 to 237.1	peridotite - typical peridotite but with section from 207 to 211 being lighter in color and including a 6" section of granitic coarse grained injection, at 212.5' - clear cut contact with andesite								
237.1 to 238.8	andesite - a fine grained grayish andesite.								
238.8 to 247.5	peridotite - a typical, black peridotite								
247.5 to 250.0	andesite - a greyish green fine grained rock.								
250.0 to 251.5	peridotite - typical peridotite.								
251.5 to 257.8	andesite - a fine grained greenish rock - calcite stringers are faulted short distances.								
257.8 to 261.4	peridotite - typical black peridotite								
261.4 to 265.0	andesite - coarse grained greenish andesite, parts porphyritic.								

DIAMOND DRILL RECORD

PROPERTY GREEN BAY MINING & EXPLORATION - CAVIAR LAKE HOLE No. 12
 SHEET NUMBER 5 SECTION FROM TO STARTED
 LATITUDE DATUM COMPLETED
 DEPARTURE BEARING ULTIMATE DEPTH
 ELEVATION DIP PROPOSED DEPTH

DEPTH FEET	FORMATION	SAMPLE NO.	FROM	TO	WIDTH	ASSAY VALUES			
265.0 to 274.3	peridotite - somewhat lighter in color than average.								
274.3 to 280.6	andesite porphyry - a fine grained greenish rock with scattered orthoclase phenocrysts.								
280.6 to 294.5	peridotite - rock is much lighter in color than the normal peridotite but is soft and has the typical sub rounded phenocrysts.								
294.5 to 307.0	quartz syenite - a medium grained, well mottled, hornblende rich (40%) quartz syenite - most of the feldspar is orthoclase - has a few epidote stringers.								
307.0 to 322.9	peridotite - a typical, black, soft peridotite.								
322.9 to 329.6	andesite - a dark fine grained rock andesite to basalt.								
329.6 to 334.7	peridotite - a typical peridotite.								
334.7 to 336.0	syenite - a med. grained syenite, almost porphyritic in texture with epidote in abundance.								
336.0 to 350.2	diorite - a fine grained greyish diorite - cut by numerous epidote stringers.								
350.2 to 405.0	syenite - a med. grained syenite with minor quartz, almost porphyritic in one phase and with a high orthoclase content, small hornblende content, and with epidote stringers - bed grained from 366' to 367.5' - contains short sections of andesite 6" in width.								
	END								

K 25988.

DIAMOND DRILL RECORD

PROPERTY GREEN BAY MINING & EXPLORATION - CAVIAR LAKE HOLE No. 13
 SHEET NUMBER 1 SECTION FROM _____ TO _____ STARTED Aug 1956
 LATITUDE 47° 15' N DATUM _____ COMPLETED _____
 DEPARTURE 1170 E BEARING N 90° W ULTIMATE DEPTH 213'
 ELEVATION _____ DIP -35° PROPOSED DEPTH _____

DEPTH FEET	FORMATION	SAMPLE NO.	FROM	TO	WIDTH	ASSAY VALUES		
0.0 to 26.0	casing							
26.0 to 51.8	quartz diorite - rock is medium grained to coarse grained, feldspar is tinged pink from minor orthoclase composition, hornblende is often a bright green, quartz is present and small amounts of calcite occurs in cracks.							
51.8 to 53.3	andesite - f. grained, green to dark green andesite - chloritic on some joint planes.							
53.8 to 55.0	andesite-diorite - andesite with about 40% dioritic material - broken up ground.							
55.0 to 65.0	andesite - fine grained, fairly dark andesite .							
65.0 to 76.0	diorite - a grey to dark grey rock, fine grained with a faint mottled appearance, a bright mineral appears along joint planes - thin hematite bands - magnetic.							
76.0 to 111.4	gabbro - has about the same texture as the preceding diorite but is black - has the same red mineral along joints but more of it - has very short sections of a more siliceous and harder rock due to proximity of the granites - magnetite crystals.							
111.4 to 129.5	peridotite - rock has the same textural appearance as other peridotite but does not have a greasy feel and is a dark grey rather than black - not the true peridotite but tending towards gabbro. from 125 to 128' rock has the red mineral as a porphyry - rock is also liny in this section - magnetite makes core very magnetic although individual magnetite crystals are difficult to see.							

DIAMOND DRILL RECORD

PROPERTY GREEN BAY MINING & EXPLORATION - CAVIAR LAKE HOLE No. 14
 SHEET NUMBER 1 SECTION FROM _____ TO _____ STARTED _____
 LATITUDE N 44° 53' 20" W DATUM _____ COMPLETED _____
 DEPARTURE 1080 E BEARING N 90° W ULTIMATE DEPTH 158'
 ELEVATION _____ DIP - 60° PROPOSED DEPTH _____

DEPTH FEET	FORMATION	SAMPLE NO.	FROM	TO	WIDTH	ASSAY VALUES			
0.0 to 4.0	casing								
4.0 to 61.2	gabbro - a fairly fine grained gabbro, mineralized with magnetite and having some hematite along joint planes & fractures & small amounts around plagioclase crystals - minor granodiorite @ 44'.								
61.2 to 98.5	peridotite - typical black soft peridotite with some magnetite mineralization - minor granodiorite (from 71' to 72') - peridotite is fairly fine grained from 72.5 to 74' but is soapy and has been hematized - graphitic in fractures - very minor pyrite.								
98.5 to 102.8	andesite - very dark andesite cut by a few limy stringers.								
102.8 to 158.0	diorite - a well mottled grey to dark grey coarse grained diorite, the feldspar often being in large masses - not magnetic - varies from coarse to fine grained - fractured from 112.5' to 115' - plagioclase rich from 141 to 144 (anorthosite) from 144 to 154 is rich in feldspars - parts with calcite stringers.								
	END								

DIAMOND DRILL RECORD

PROPERTY CHRYSLER LEASING & EXPLORATION - CIVILIAN LEASE HOLE No. 25 23
 SHEET NUMBER 1 SECTION FROM _____ TO _____ STARTED October '5
 LATITUDE NORTH B.L. 559 DATUM _____ COMPLETED _____
 DEPARTURE 934E BEARING — ULTIMATE DEPTH 694'
 ELEVATION _____ DIP -90° PROPOSED DEPTH _____

DEPTH FEET	FORMATION	SAMPLE NO.	FROM	TO	WIDTH	ASSAY VALUES		
0.0 - 2.0	casing							
2.0 - 8.0	granodiorite - a fairly coarse grained well mottled rock							
8.0 - 17.1	diorite - an altered phase of a fine grained diorite cut by minor granodiorite stringers							
17.1 - 98.8	andesite - very coarse grained andesite cut by granodiorite stringers - few limy stringers around 47' - around 71' andesite resembles vaguely the pillowed andesites to the south of the property - 1 1/2' pink syenite porphyry @ 96'							
98.8 - 102.8	quartz diorite - a med. grained diorite probably related to the succeeding coarser grained granodiorite							
102.8 - 106.4	granodiorite - coarse grained typical granodiorite							
106.4 - 148.5	andesite - a f.g. dark andesite, basalt in part. 130-134 - very coarse grained							
148.5 - 182.8	diorite - a very fine grained greenish grey diorite probably a recrystallized andesite							
182.8 - 180.8	andesite porphyry - a typical andesite but with pink and white feldspar porphyry scattered liberally throughout the section of core							
180.8 - 241.6	diorite - a fine grained greenish grey diorite gradational from the andesite porphyry - cut by minor syenite intrusions, has some andesite remnants and cut by few limy stringers.							

NORTHERN MINER FORM 505 REV. 7/54

DRILLED BY _____ SIGNED _____

DIAMOND DRILL RECORD

PROPERTY GREEN LAY MINING & EXPLORATION - CAVIAR LAKE HOLE No. 25
 SHEET NUMBER 2 SECTION FROM _____ TO _____ STARTED _____
 LATITUDE _____ DATUM _____ COMPLETED _____
 DEPARTURE _____ BEARING _____ ULTIMATE DEPTH _____
 ELEVATION _____ DIP _____ PROPOSED DEPTH _____

DEPTH FEET	FORMATION	SAMPLE NO.	FROM	TO	WIDTH	ASSAY VALUES			
244.6 - 252.8	andesite - a coarse grained andesite cut by many siliceous & limy stringers								
252.8 - 270.6	diorite - a well mottled diorite varying from fine to medium-grained, and having short sections of andesite remnants.								
270.6 - 277.9	andesite - a fine grained greenish grey andesite, cut by many limy & siliceous stringers								
277.9 - 295.0	diorite - a well mottled diorite, from fine to medium grained								
295.0 - 314.6	quartz syenite - a med. grained rock with minor quartz crystals having inclusions and short sections up to 1' of andesite rock and minor diorite								
314.6 - 332.3	diorite - a med. grained, fairly dark, well mottled diorite, with some short syenite sections - has minor epidotization in spots								
332.3 - 340.0	granodiorite - a med. grained granodiorite to quartz syenite, orthoclase is often formed along cracks and joints more heavily than throughout the rest of the rock - few epidote stringers								
340.0 - 371.1	diorite - med. grained, fairly dark, well mottled diorite with minor syenite - 4" bull quartz vein at 367'								
371.1 - 375.0	syenite - med. grained, pink syenite								
375.0 - 383.0	diorite - a med. grained, dark, well mottled diorite - some epidote stringers.								

DIAMOND DRILL RECORD

PROPERTY GRAND MOUNTAIN & EXPLOSION - CAYLAH LAKE HOLE No. 23

SHEET NUMBER 3 SECTION FROM _____ TO _____ STARTED _____

LATITUDE _____ DATUM _____ COMPLETED _____

DEPARTURE _____ BEARING _____ ULTIMATE DEPTH _____

ELEVATION _____ DIP _____ PROPOSED DEPTH _____

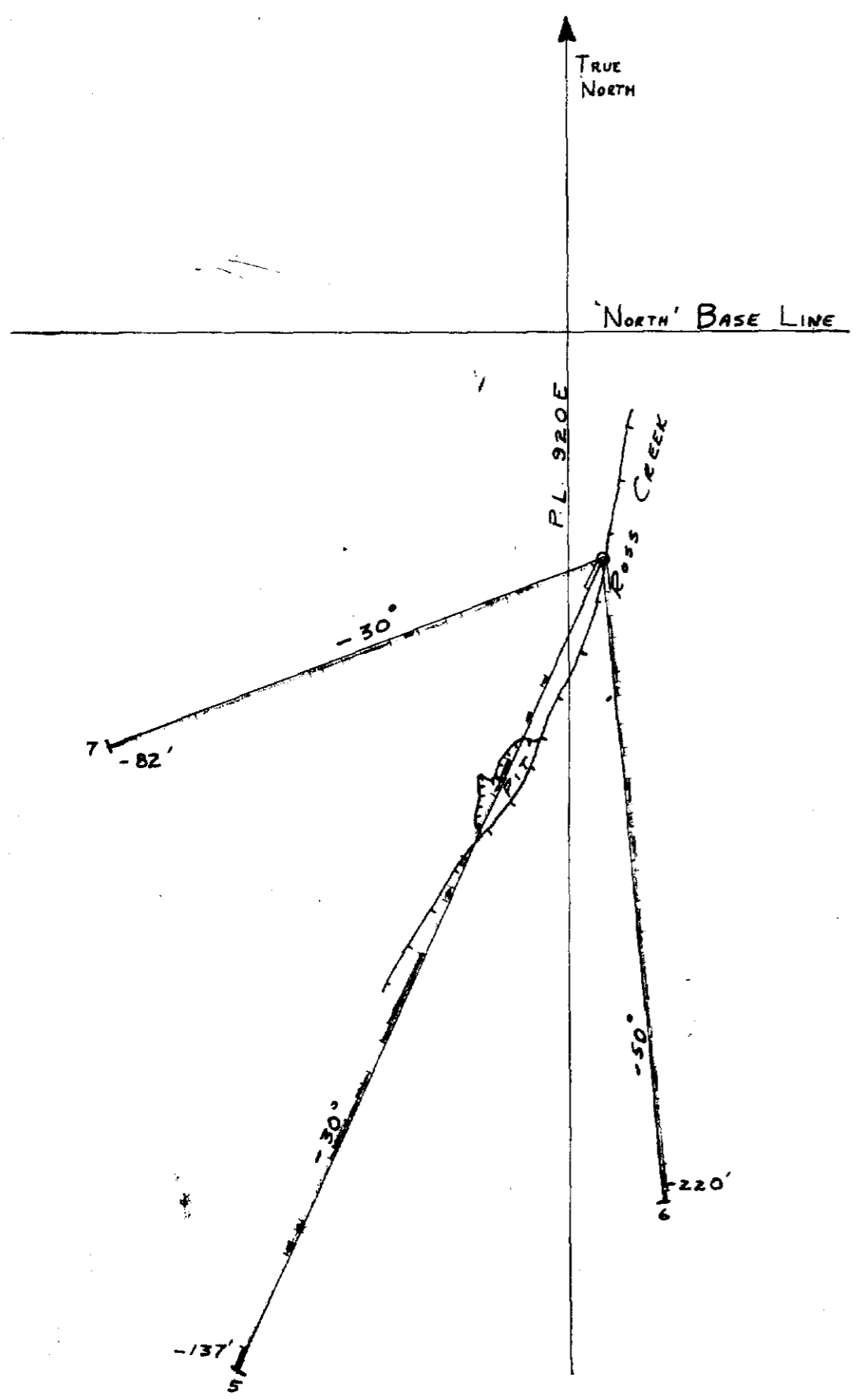
DEPTH FEET	FORMATION	SAMPLE NO.	FROM	TO	WIDTH	ASSAY VALUES		
383.0 - 413.9	granodiorite - a typical med. grained granodiorite, 1.5' section of coarse gr. andesite @ 406.5'							
413.9 - 421.3	quartz diorite - a med. to coarse grained diorite							
422.3 - 450.7	syenite - typical med. gr. syenite - few very short sections of andesite							
450.7 - 455.7	andesite - a fairly dark rock, partly recrystallized to hornblende							
455.7 - 458.0	syenite - same as previous syenite							
458.0 - 471.7	andesite - a coarse, partly recrystallized andesite							
471.7 - 475.7	syenite - med. grained, pink syenite							
475.7 - 489.4	diorite - med. grained dark diorite							
489.4 - 493.2	syenite - med. grained typical syenite							
493.2 - 495.0	andesite - a fine grained andesite cut by limy and siliceous stringers							
495.0 - 499.0	granodiorite, varying from diorite to quartz syenite							
499.0 - 503.8	andesite - a fine grained green andesite cut by a few siliceous & limy stringers							

DIAMOND DRILL RECORD

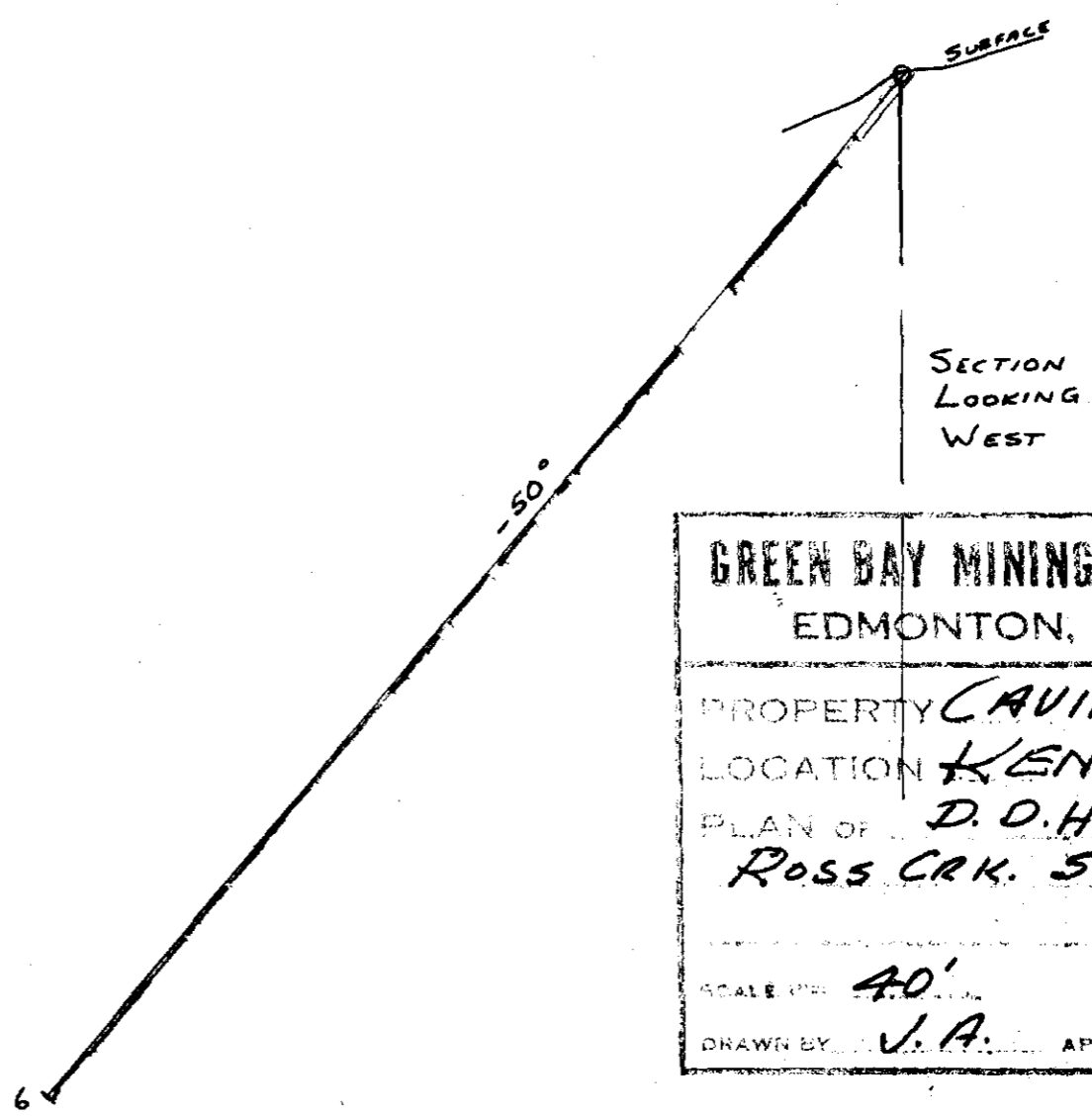
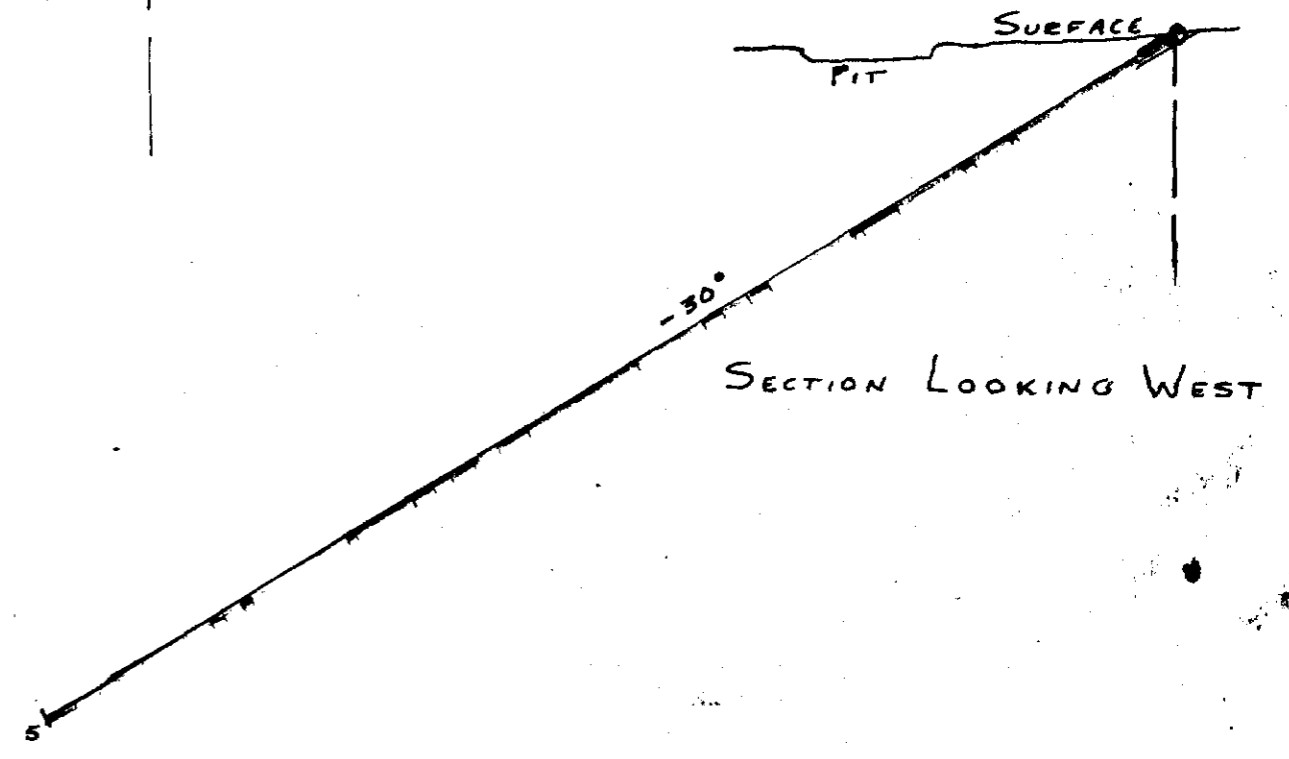
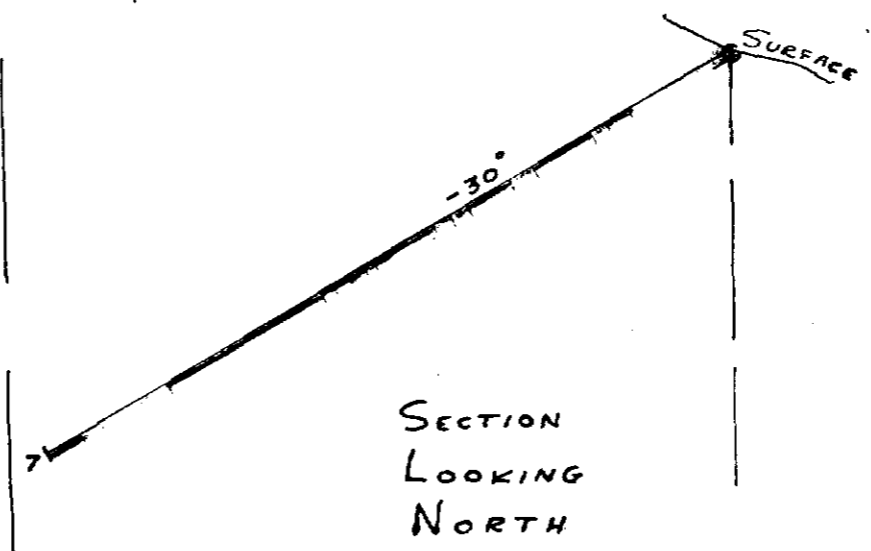
PROPERTY GRAND DIV. MINING & RECONSTRUCTION - CAVIAR LAKE HOLE No. 28
 SHEET NUMBER 4 SECTION FROM _____ TO _____ STARTED _____
 LATITUDE _____ DATUM _____ COMPLETED _____
 DEPARTURE _____ BEARING _____ ULTIMATE DEPTH _____
 ELEVATION _____ DIP _____ PROPOSED DEPTH _____

DEPTH FEET	FORMATION	SAMPLE NO.	FROM	TO	WIDTH	ASSAY VALUES		
503.2 - 526.8	diorite - a well mottled diorite grading to a granodiorite where orthoclase crystals are fairly heavy in number - 1' of coarse andesite at 520.5'							
526.8 - 544.8	syenite - a med. gr. syenite with some diorite inclusions - some epidote stringers.							
544.8 - 552.2	diorite - med. gr. dark diorite to granodiorite							
552.2 - 555.5	diorite - a light colored greenish diorite							
555.5 - 561.1	diorite - a dark med. gr. diorite with a few syenite intrusions							
561.1 - 563.8	syenite - med. gr. syenite with epidote stringers							
563.8 - 625.5	med. gr., dark, well mottled diorite - 2' section of granodiorite to quartz syenite @ 581' - parts much darker from apparent absorption of intruded andesite							
625.5 - 627.7	andesite - very light green coarse andesite, highly altered and with minor epidote stringers							
627.7 - 637.8	diorite - a fine grained diorite, cut by many syenite stringers.							
637.8 - 642.0	andesite - a coarse gr. recrystallized andesite cut by syenite stringers							
642.0 - 646.2	syenite - a med. gr. quartz syenite with some andesitic remnants							
646.2 - 661.2	andesite - a fine gr. andesite, cut by a few syenite stringers							

K-19983



PLAN

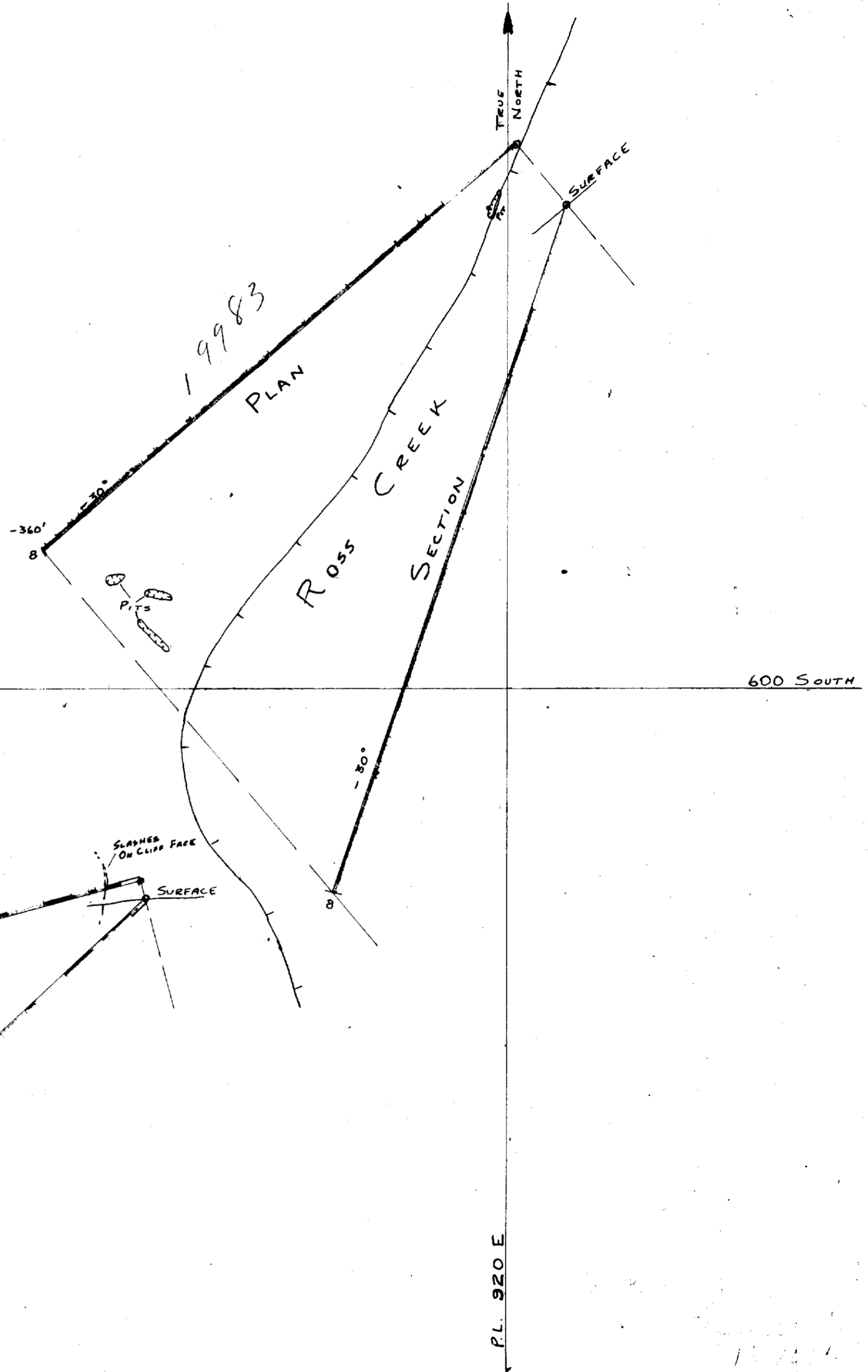


GREEN BAY MINING & EXPLORATION	
EDMONTON, ALBERTA.	
PROPERTY	CAVIAR LAKE
LOCATION	KENORA ONT
PLAN OF	D.O.Hs. #5, #6 & #7
ROSS CRK. SHOWING.	
SCALE	40'
DATE	OCT/86
DRAWN BY	J.A.
APPROVED BY	R.J.R.S.

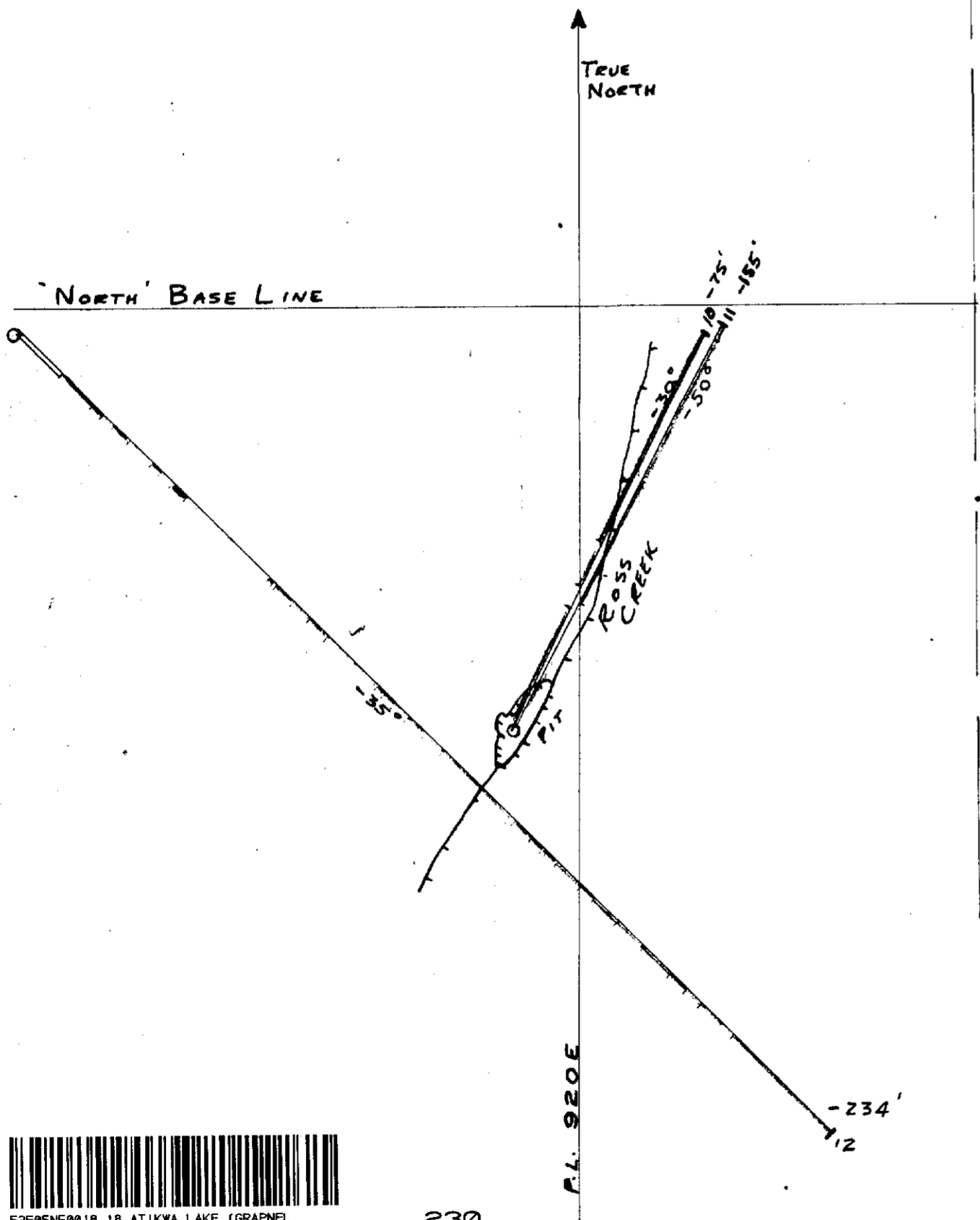


52F05NE0018 18 ATIKWA LAKE (GRAPNEL)

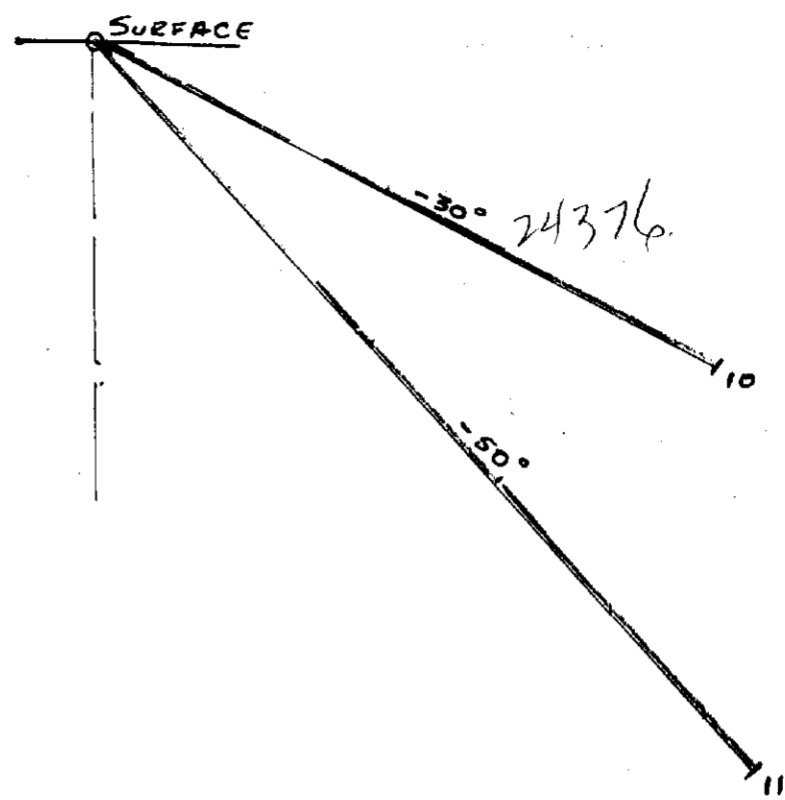
GREEN DAY MINING & EXPLORATION
 EDMONTON, ALBERTA
 PROPERTY **CAVIAR LAKE**
 LOCATION **KENORA - ONT.**
 PLAN **D.D.Hs. #8 & #9**
ROSS CRK. SHOWING.
 SCALE ~~100'~~ 100' DATE **OCT 56**
 DRAWN BY **J.A.** CHECKED BY **R.T.R.S.**



52F05NE0018 18 ATIKWA LAKE (GRAPNEL)



SECTION
LOOKING
N.W.



GREEN BAY MINING & EXPLORATION
EDMONTON, ALBERTA.

PROPERTY *CAVIAR LAKE*
LOCATION *KENORA - ONT*
PLAN OF *D.D.Hs #10, #11 & #12*
ROSS CRK. SHOWING

SCALE 1" = 40'
DRAWN BY *J.A.* APPROVED BY *R.J.R.S.* DATE *Oct/56*

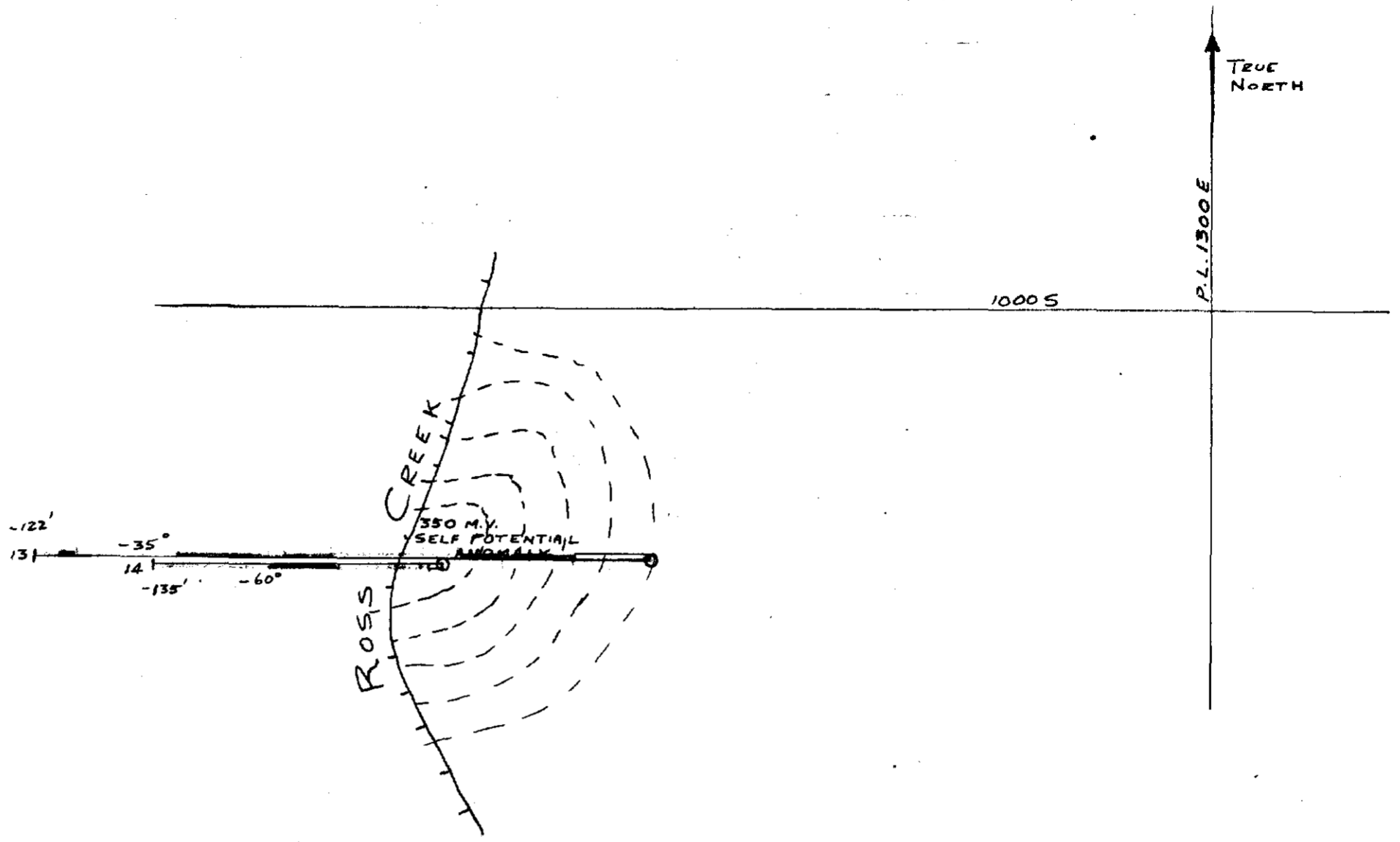
SECTION
LOOKING N.E.

19983

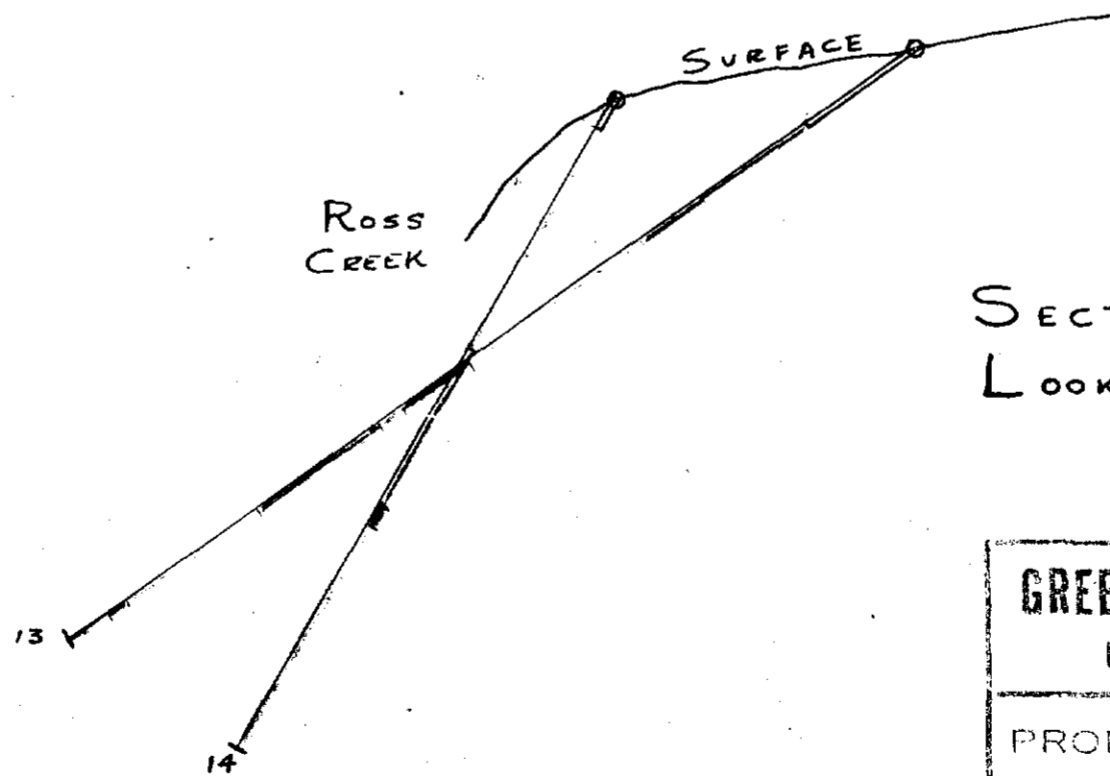


230

PLAN



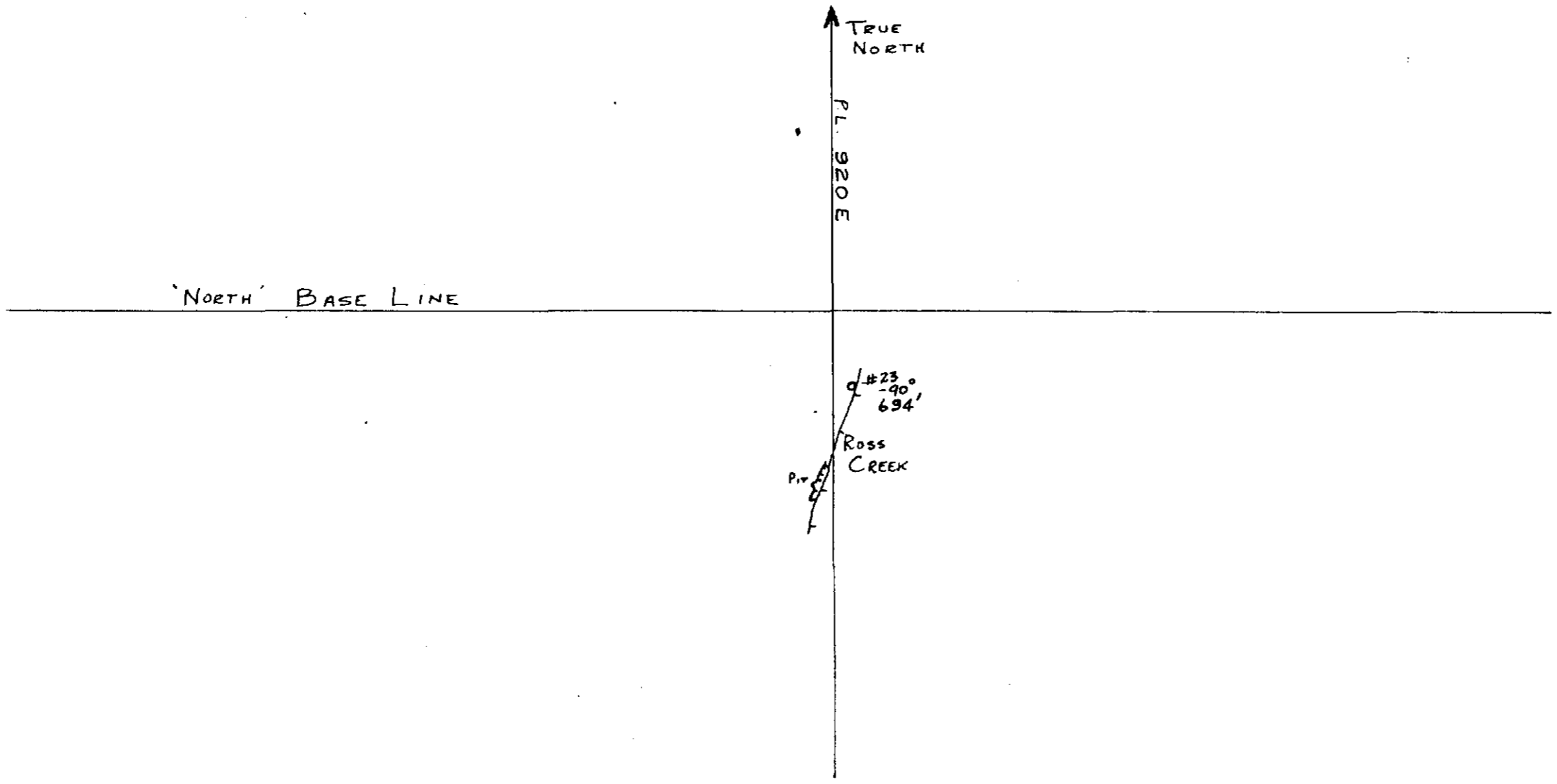
PLAN



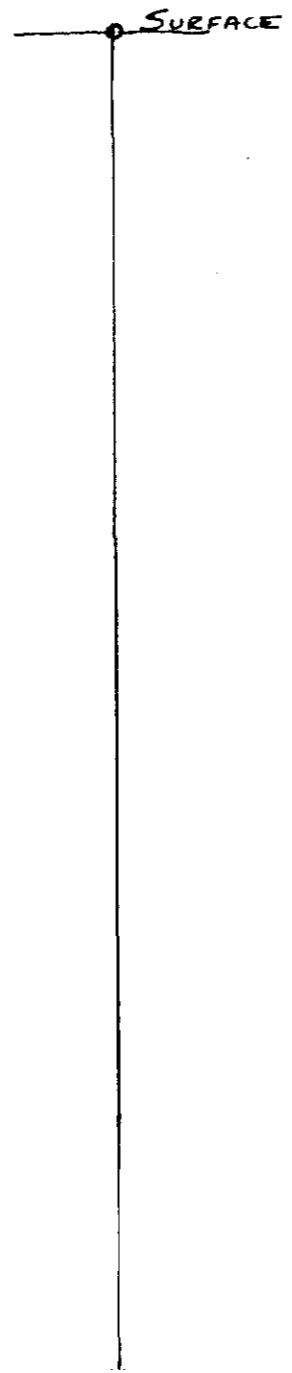
SECTION
LOOKING NORTH

GREEN DAY MINING & EXPLORATION	
EDMONTON, ALBERTA.	
PROPERTY	CAVIAR LAKE
LOCATION	KENORA - ONT
PLAN OF	D.O.H.S. #13 & #14
ROSS CRK. SHOWING.	
SCALE 1" =	40'
DRAWN BY	J.A.
DATE	Oct/56
APPROVED BY	R.J.R.S.





PLAN



GREEN BAY MINING & EXPLORATION EDMONTON, ALBERTA.	
PROPERTY <u>CAVIAR LAKE</u>	
LOCATION <u>KENORA ONTARIO</u>	
PLAN OF <u>D. D. H. # 23</u>	
<u>ROSS CREEK SHOWING</u>	
SCALE 1" = <u>100'</u>	DATE _____
DRAWN BY <u>J.A.</u>	APPROVED BY <u>R.S.</u>

SECTION
LOOKING WEST.

24376

