



52F05NE0032 12 ATIKWA LAKE (GRAPNEL

010

Diamond Drilling

Area of Atikwa Lake

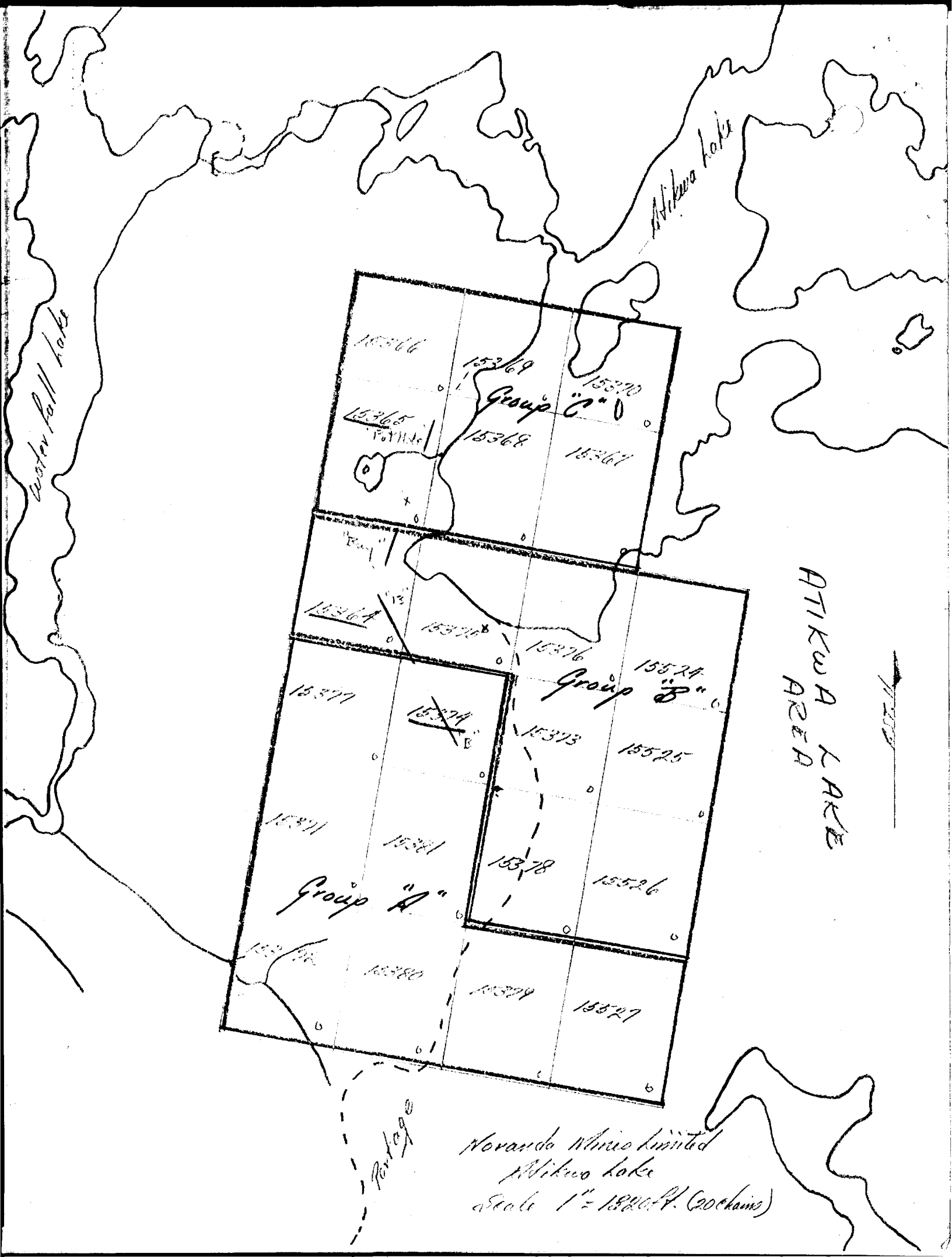
Report No 12

Work performed by: Noranda Mine

Claim No	Hole No	Footage	Date	Note
K 15374	22		Feb/52	
	23		Feb/52	
	29		Mar/52	
K 15364	41		Apr/52	
	51		May/52	
	52		May/52	
	53		May/52	
	54		May/52	
K 15365	55		May/52	
	56		May/52	
	57		May/52	
	58		June/52	
	59		June/52	

13

Notes:



Noranda Mines Limited
 Atikwa Lake
 Scale 1" = 1520 ft. (20 chains)

Group A.

PROPERTY

Abikwa Lake Lith PropertySheet No. 1D. D. H. No. 23Lat. 21005Dip -45°Elev. 1303 ft.Start 16th Feb. 1952Dep. 0450EBearing west (T)Depth 630 ft.End 18th Feb. 1952Resumed 7th March 1952

Foot	Grade	Core Rec'y	Rock Type	Mineralization	Noranda No.	Check No.	Length	% Cu.	Au.	% Stringers	Remarks
0-28			Casing								
9		6	Sp. Band	Fair-Good Co.							Good Cu, low Au
55		16	Sp. Band	tr. Sli. Co. Po							
89		34	Feld. Porph.	Nil.							12 feet Sp. Band
210		121	Sp. Band	Nil - tr. Sulph.							
401		191	" "	Sli. Co. Po Py							
414		13	Mg Di. Dyke	Nil.							
432		12	Biotite Granite	Nil.							
530		108	Sp. Band	Sli. Co. Po Py							
550		10	" "	Fair-Good Co. Po							Fair Cu values
565		15	" "	Sli. Co. Po							Some Py Dyke
570		5	" "	Fair " "							Fair Cu, low Au
585		15	" " Dyke	Sli " "							9 feet of Py Dyke
615		30	Sp. Band	Fair-Good Co. Po							Fair Cu
630		15	Sp. Band + Dyke	tr. Sulph. and Sph. Py							

Group A.

PROPERTY Atikun Lake Co. Property Sheet No. 1

D. D. H. No. 27

Lat. 84005

Dip -45°

Elev. 1290 ft.

Start 8th March 1952

Dep. 0450 W

Bearing West (W)

Depth 500 Ft.

End 16th March 1952 Reopened 25th June 1952

Foot	Grade	Core Rec'y	Rock Type	Mineralization	Noranda No.	Check No.	Length	% Cu.	Au.	% Stringas	Remarks
0 - 8			Casing								
80			Sp. Band	v. sh. to fair Gr. Py. Sph. Id.							
100			Mainly lg. Dyke	Nil.							Some Sp. Band.
215			Sp. Band	tr. to v. sh. Gr. Py. Sph. Id.							2 narrow lg. Dykes
245			Mainly lg. Dyke	tr. Sulph.							Some Band
408			Sp. Band	tr. to v. sh. Gr. Py. Sph. Id.							Some lg. Stage
490			Biote. Granite	Nil.							
494			Sp. Band	Nil.							
497			lg. Dyke	Nil.							
500			Sp. Band	Nil.							
				End of Hole							

Group B

PROPERTY

Atikusa Lake Cu Property Sheet No. 1

D. D. H. No. 41

Lat. 9+50N

Dip -45°

Elev. 1355 ft

Start 15th April 1952

Dep. 9+80W

Bearing East (E)

Depth 305 ft

End 17th April 1952

Foot	Grade	Core Rec'y	Rock Type	Mineralization	Noranda No.	Check No.	Length	% Cu.	Au.	% Stringers	Remarks
0 - 1			Casing								
55			Sp. And.	tr. to v. sh. Co. Po.							
100			" "	sh. to Fair Co. Po. to Chalazite							Low Cu - Au values
110			" "	tr. Sulph.							
170			Sp. And + Dykes	tr. to sh. Co. Po.							Numerous small dykes
195			Sp. And.	tr. to Good Co. Po. to Chalazite							Low Cu - Au values
245			" "	tr. Co. Po.							
275			" "	" "							Some Fe. Pyroph.
305			" "	" "							
				End of Hole							
				Sp. - Spotted							
				And. - Andesite							
				Sh. - Slight							
				Co - Chalazite							
				Py - Pyroxenite							

Group B

PROPERTY

Atikwa Lake Cu-Au Property Sheet No. 1D. D. H. No. 51Lat. 9+50NDip -45°Elev. 1335 ft.Start 14th May 1952Dep. 10+85WBearing East (E)Depth 860 ft.End 17th May 1952

Foot	Grade	Core Rec'y	Rock Type	Mineralization	Noranda No.	Check No.	Length	% Cu.	Au.	% Stringas	Remarks
0-6			Casing								
6-7.6		40	Sp. And. + Dyke	Nil.							Numerous lg. Sil Dykes
7.6-9.5		49	Sp. And.	v. sh. - sh. Cp. Po.							
9.5-10.5		10	" "	Good Cp. Po. tr. Chalcocite							Good Cu. low Au.
10.5-12.2		17	" "	v. sh. Cp. Po.							
12.2-12.8		6	P.g. Dyke	Nil.							
12.8-13.4		6	Sp. And.	tr. Sulph.							
13.4-15.4		20	P.g. Dyke	tr. Gal. in Fractures							
15.4-16.8		19	Sp. And.	sh. Cp. Po.							
16.8-17.5		7	White Granite	Nil.							
17.5-18.5		10	Sp. And. + Dyke	tr. Sulph.							
18.5-20.5		20	Sp. And.	v. sh. Cp. Po.							low Au. content.
20.5-26.0		55	" "	v. sh. to sh. Cp. Po.							
26.0-29.0		20	" "	Good Cp. Po. Chalcocite							Good Cu. low Au.
29.0-31.1		21	" "	v. sh. Cp. Po.							
31.1-32.0		9	White Granite	Nil.							
32.0-85.1		31	Sp. And.	"							
85.1-360		0	Lost Core	End of Hole							

Group B

PROPERTY

Atikun Lake Cu-Au Property Sheet No. 1

D. D. H. No. 52

Lat. 10+52N

Dip -55°

Elev. 1200 ft.

Start 17th May 1952

Dep. 11+20N

Bearing East (T)

Depth 347 ft.

End 21st May 1952

Foot	Grade	Core Rec'y	Rock Type	Mineralization	Noranda No.	Check No.	Length	% Cu.	Au.	% Stringas	Remarks
0-42			Basalt								
62		20	Mainly E. Dyke	Nil							Some Sp. And.
120		58	Sp. And.	v. sh. Co. P.							Some E. Dyke
130		10	" "	sh. Co. P.							low Cu. Fair Au.
146		26	" "	sh. Fair Co. P.							
171		5	Feld. Porph.	Nil							Synite?
192		21	And. Sp.	tr. v. sh. Co. P.							
212		20	Sp. And. Dyke	tr. Co. P.							Several Dykes.
225		13	Sp. And.	v. sh. Co. P.							
225		50	" "	Fair Co. P.							Fair Cu. Strong Alt.
302		25	" "	v. sh. " "							
325		25	" "	sh. " "							low Cu. Fair Au.
347		22	" "	v. sh. " "							
				End of Hole							

Group B

PROPERTY Alkwa Lake Co. Property Sheet No. 1D. D. H. No. 53Lat. 11+50NDip -50°Elev. 1300 Ft.Start 22nd May 1952Dep. 12+00WBearing East (T)Depth 318 Ft.End 24th May 1952

Foot	Grade	Core Rec'y	Rock Type	Mineralization	Noranda No.	Check No.	Length	% Cu.	Au.	% Stringas	Remarks
0 - 12			Casing.								
46		38	Sl. Sp. Sand	tr. Co. P. Py.							
58		12	Sand & Dyke	Nil							Mainly F.P. Py. Dyke
75		17	Sp. Sand	"							
105		20	Sp. Sand & Dyke	tr. Sulph.							Numerous Fg. Dyke
166		61	G. Sand & Dyke	Nil. to tr. Sulph.							" F.P. Py. Dyke
205		39	Mainly Fg. Dyke	Nil.							Some Sp. Sand.
318		112	Sp. Sand	tr. Sl. Co. P. End of Hole							

Group C.

PROPERTY Abilene Lake District Property Sheet No. 1D. D. H. No. 55Lat. 34°00'N Dip -45° Elev. 1210 Ft. Start 28th. May 1952Dep. 8+65'W Bearing East (E) Depth 245 Ft End 29th. May 1952

Depth	Grade	Core Recy	Rock Type	Mineralization	Noranda No.	Check No.	Length	% Cu.	Au.	% Stringers	Remarks
0-3.0			Casino								
7.9		4.9	Sp. Andesite	Nil							
9.2		1.3	F.g. Dyke	"							
55.0		35.8	P. Sp. Andesite	tr. to v. sli. Cp. Po. Py.							Good Hubble alt.
90.0		35.0	"	Sli. to Fair Cp. Po. Py.							Gold values.
97.5		7.5	Feld. Porph.	Nil.							
122.0		24.5	P. Sp. Andesite	tr. to v. Sli. Cp. Po. Py.							
138.0		16.0	Feld. Porph.	Nil.							
175.0		37.0	P. Sp. And.	"							
233.0		58.0	"	Sli. to Fair Cp. Po. Py.							
242.0		9.0	P.g. Dyke	Nil.							
245.0		3.0	Hubble Syenite	"							
				End of Hole.							
				sp - spotted							
				P.g. - fine grained							
				Hubble - Hornblende							
				P - Pillowed							
				Cp - Chalcopyrite							
				Po - Pyrrhotite							
				Py - Pyrite							
				v. sli - very slight							

Group C

PROPERTY Atkins Lake Co. Property Sheet No. 1

D. D. H. No. 57

Lat. 35° 00' N

Dip -45°

Elev. 1195 Ft.

Start 31st. May 1952

Dep. 7472 W

Bearing East (E)

Depth 164 Ft.

End End. June 1952

Foot	Grade	Core Rec'y	Rock Type	Mineralization	Noranda No.	Check No.	Length	% Cu.	Au.	% Stringers	Remarks
0 - 10.0			Casing								
23.0			18.0 P.S.S. Andinite	tr. G.P. Py.							
26.0			3.0 P.g. Dyke	Nil.							
141.0			115.0 P. Sp. Andinite	tr. to Sli. G.P. Py.							
164.0			23.0 H. S. Syenite	Nil.							
				End of Hole.							

Group C.

PROPERTY Stikine Lake Co. Au Property Sheet No. 1D. D. H. No. 589Lat. 33°50'NDip -45°Elev. 1202 Ft.Start 3rd June 1952Dep. 9400 WBearing East (E)Depth 386 Ft.End 8th June 1952

Foot	Grade	Core Rec'y	Rock Type	Mineralization	Noranda No.	Check No.	Length	% Cu.	Au.	% Stringas	Remarks
0-5.0			Casino								
180		120	P. Sp. Andinite	Nil.							
27		9	Feld. Porph.	"							
39		12	P. Sp. Andinite	"							
63		24	White Quartz	"							
120		67	P. Andinite sp.	tr. Co. P. Py.							narrow by section
155		25	" " "	tr. to v. sl. Co. P. Py.							low Au values.
205		50	" " "	tr. Co. P. Py.							
235		30	" " "	sl. " " "							low Au values.
240		5	White Quartz	Nil							
330		90	P. Sp. Andinite	tr. to sl. Co. P. Py.							
335		5	" " "	Fine Co. P. Py.							Au values
386		51	" " "	tr. to v. sl. Co. P. Py. End. of Hole.							

Group C

PROPERTY

Hikunaka Co. Property

Sheet No.

1

D. D. H. No.

59

Lat.

32°00'N

Dip

-45°

Elev.

1200ft.

Start

8th. June 1952

Dep.

9450W

Bearing

East (0)

Depth

294ft

End

10th. June 1952

Foot	Grade	Core Rec'y	Rock Type	Mineralization	Noranda No.	Check No.	Length	% Cu.	Au.	% Stringas	Remarks
0 - 12			Casing								
22			10 P. Sp. Andinite	Nil.							
36			14 Mg. Dyke	"							
59			23 P. Sp. Andinite	Some fair Cp Pol.							
67			8 P. Dyke	Nil.							
179			112 P. Sp. Andinite	Nil to v. sh. Cp Pol.							
184			5 Feld. Porph.	Nil.							
215			31 P. Sp. Andinite	Nil to v. sh. Cp Pol.							
230			25 " " "	v. sh. to Good Cp Pol.							Some good Au values.
257			17 " " "	tr. Cp Pol.							
294			39 "								
267			10 Feld. Porph.	Nil.							
294			27 P. Sp. Andinite	tr. Cp Pol.							
				End of Hole							

No 4 Post K 1537A

84 00N

12700 6137

End of Hole

DDH 57 -45°E

Approximate location

DDH 41 -45°E

DDH 51 -50°E

40 ft to End of End of Hole 51

K 1536A

of 1000 ft

OSTN

End of Hole

DDH 52 -55°E

Novanda Mines Limited
Atikwa Lake "B"
Claim Group "B"
Scale 1" = 30 feet.

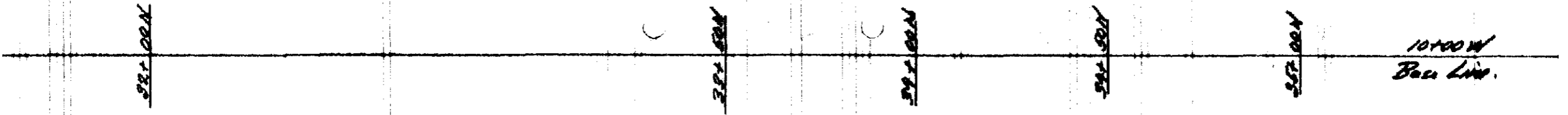
End of Hole

DDH 53 -50°E



52F05NE0032 12 ATIKWA LAKE (GRAPNEL)

200



No. 2 Part of
K 15365 at
381 00N. +
81 00W

DDH 59
-45° E



Noranda Mines Limited
Atikwa Lake
Claim Group 'C'
Scale 1" = 30'

DDH 58
-45° E

DDH 55
-45° E

K 15365

DDH 56
-45° E

DDH 57
-45° E

End of H66

Approximate location of claim line

K 15368

End of H66

End of H66

part to End of H66

part to End of H66



52F05NE0032 12 ATIKWA LAKE (GRAPNEL)