



DIAMOND DRILLING



52F05SW0049 50 DOGPAW LAKE

010

Area: Dog Paw Lake

Report No: 50

WORK PERFORMED FOR: Proteus Resources Inc.

RECORDED HOLDER: SAME AS ABOVE [x]

: OTHER []

CLAIM NO:	HOLE NO:	FOOTAGE	DATE	NOTE
K 794544	J86-1	600'	Aug/86	(1) (2)
K 794545	J86-2	447'	Aug/86	(1) (2)
K 794546	J86-3	487'	Aug/86	(1) (2)
	J86-4	337'	Sept/86	(1) (2)
	J86-5	547'	Aug-Sept/86	(1) (2)
K 794505	J86-6	397'	Sept/86	(1) (2)
K 794546	J86-7	337'	Sept/86	(1) (2)
	J86-8	317'	Sept/86	(1) (2)
K 794545	J86-9	307'	Sept/86	(1) (2)
K 794546	J86-10	297'	Sept/86	(1) (2)
	J86-11	457'	Sept/86	(1) (2)
K 794547	J86-12	397'	Sept/86	(1) (2)
	J86-13	297'	Sept/86	(1) (2)
K 794546	J86-14	276'	Sept/86	(1) (2)

NOTES: (1) #140-86 (filed in May/87)

(2) COMPANY OF THE ZONE PROJECTS INC

1000 W. 10th St. Regina, Saskatchewan

REGINA, SASKATCHEWAN S4P 1A1, TEL: 343-1234

DIAMOND DRILLING SUMMARY
 PROTEUS RESOURCES INC.
JESSIE LAKE PROPERTY

DDH	GRID	DIP	DIRECTION	STARTED	FINISHED	CASING	CLAIM
J86-1	1.19+00W 6+00S	(-45°)	grid S 156°	Aug 19/86	Aug 22	14'/600'	K794544
J86-2	1.34+00W 6+50S	(-45°)	grid N 336°	Aug 24/86	Aug 25	20'/447'	K794545
J86-3	1.37+00W 8+70S	(-45°)	grid N 336°	Aug 26/86	Aug 27	8'/487'	K794546
J86-4	1.38+00W 7+75S	(-45°) -44.5° collar	grid N 336°	Sept 8/86	Sept 9	10'/337'	K794546
J86-5	1.40+00W 8+30S	(-45°) -45° collar	grid N 336°	Sept 5/86	Sept 7	8'/547'	K794546
J86-6	1.8+00W 14+00N	(-45°)	grid S 156°	Aug 31/86	Sept 1	4'/167'	K794505
J86-6	1.8+00W 14+00N	(-45°)	grid S 156°	Sept 1/86	Sept 4	12'/397'	K794505
J86-7	1.37+00W 7+70S	(-45°)	grid N 336°	Sept 10/86	Sept 11	10'/337'	K794546
J86-8	1.35+00W 7+90S	(-45°)	grid N 336°	Sept 12/86	Sept 13	30'/317'	K794546 (collar) K794545 (bottom ½)
J86-9	1.31+00W 5+25S	(-45°)	grid S 156°	Sept 14/86	Sept 15	22'/307'	K7945545 (collar) K794544 (bottom ½)
J86-10	1.36+05W 7+80S	(-45°)	grid N 336°	Sept 16/86	Sept 17	10'/297'	K794546
J86-11	1.41+00W 8+35S	(-45°)	grid N 336°	Sept 17/86	Sept 19	10'/457'	K794546
J86-12	1.54+00W 2+70N	(-45°)	grid N 336°	Sept 21/86	Sept 22	4'/397'	K794547
J86-13	1.54+00W 3+50S	(-45°)	grid S 156°	Sept 23/86	Sept 24	8'/297'	K794547
J86-14	1.39+00W 7+35S	(-45°)	grid N 336°	Sept 26/86	Sept 27	14'/276'	K794546

PROTEUS RESOURCES INC.

DIAMOND DRILL RECORD

NAME OF PROPERTY JESSIE LAKE
 HOLE NO. J86-1 LENGTH 600 feet
 LOCATION grid coordinates 19400 West / 6100 South
 LATITUDE _____ DEPARTURE _____
 SURFACE ELEVATION 1143 feet ASI AZIMUTH 156° j grid North DIP -45°
 STARTED Aug 19/86 FINISHED Aug 27/86

FOOTAGE	DIP	AZIMUTH	FOOTAGE	DIP	AZIMUTH
collar	-46.5°				
492'	-52°				

HOLE NO. J86-1 SHEET NO. SUMMARY
 REMARKS Claim K 29 4544

LOGGED BY M. Beauregard

FOOTAGE		DESCRIPTION	SUMMARY OF SAMPLES				ASSAYS				
FROM	TO		NO.	% SULPHIDES	FOOTAGE			%	%	OZ/TON	OZ/TON
					FROM	TO	TOTAL				
<u>SUMMARY OF LITHOLOGIES</u>											
4.0	14.0	Overburden	42	501	39.6	41.1	1.5			trace	
14.0	91.5	Peridotite (4z)		502	47.8	51.6	3.8			trace	
91.5	248.3	Andesite (1a, 1d)		503	97.0	98.1	1.1			trace	
248.3	254.8	Quartz-Carbonate-Chlorite Vein		504	132.4	140.4	3.0			trace	
254.8	297.6	Gabbro Dyke (4a)		505	140.4	143.4	3.0			0.02	
297.6	337.0	Basalt (1d, 1a)		506	143.4	146.4	3.0			trace	
337.0	406.0	Basalt (1d)		507	186.2	187.4	1.2			0.01	
406.0	522.0	Tuff (2f)		508	217.5	220.0	2.5			0.01	
522.0	528.5	Tuff Breccia (2d)		509	220.0	223.0	3.0			0.04	
528.5	546.0	Tuff (2f)		42	951	223.0	226.0	3.0		0.02	
546.0	552.0	Andesite (1a)		510	230.3	232.5	2.2			0.02	
552.0	565.7	Tuff (2f)		511	232.5	233.8	1.3			trace	
565.7	600.0	Tuff Breccia (2d)		512	233.8	237.0	3.2			0.02	
				513	231.0	240.6	3.6			0.01	
				514	240.6	243.4	2.8			0.01	
				515	243.4	245.5	2.1			0.01	
				516	245.5	248.3	2.8			trace	
				517	248.3	250.3	2.0			0.04	
				518	250.3	254.2	4.5			trace	
				519	254.2	258.0	3.2			0.01	
				520	263.0	266.0	3.0			trace	
				42	952	263.0	266.0	3.0		trace	
				521	266.0	297.6	3.0			0.04	
				42	953	297.6	300.3	3.0		trace	
				42	954	300.3	303.3	3.0		0.01	
				522	300.3	313.8	3.0			0.04	
				42	955	313.8	316.5	3.0		0.01	
				523	316.5	319.5	3.0			0.04	
				524	322.5	324.2	1.7			trace	
				525	324.2	327.5	1.5			trace	
				526	327.5	329.3	1.9			0.01	
				527	329.3	379.4	2.0			0.01	
				528	431.0	433.0	2.0			0.01	
					527	437.0	439.6	2.6		0.02	
					528	555.9	558.5	2.6		0.01	

DIAMOND DRILL RECORD

NAME OF PROPERTY JESSIE LAKE
 HOLE NO. J86-2 LENGTH 447 DL.
 LOCATION grid coordinates Line 3400 West / 6750 South
 LATITUDE _____ DEPARTURE _____
 SURFACE ELEVATION 1110 ft ASL AZIMUTH 336° grid North DIP -45°
 STARTED Apr 24/86 FINISHED Apr 25/86

FOOTAGE	DIP	AZIMUTH	FOOTAGE	DIP	AZIMUTH
collar	-45.5°				
397'	-50°				

HOLE NO. J86-2 SHEET NO. SUMMARY
 REMARKS Claim K794545

LOGGED BY M. Beauvois

FOOTAGE		DESCRIPTION	SUMMARY OF SAMPLES				ASSAYS				
FROM	TO		NO.	% SULPHIDES	FOOTAGE			%	%	OZ/TON	OZ/TON
					FROM	TO	TOTAL				
		<u>SUMMARY OF LITHOLOGIES</u>	42	529	27.0	31.0	4.0			trace	
2.0	20.0	overburden		530	31.0	36.0	5.0			trace	
20.0	27.5	Basalt (1d)		531	52.1	55.1	3.0			trace	
27.5	55.1	Andesite (1a)		532	55.1	58.1	3.0			0.01	
55.1	71.5	Feldspar Porphyry (5b)		42	968	58.1	62.0	3.9			0.004
71.5	85.5	Andesite (1a)		969	62.0	66.0	4.0			trace	
85.5	166.5	Tuff (2f, 1a)		970	66.0	69.0	3.0			trace	
166.5	177.0	Basalt (1d)		971	69.0	71.0	2.0			trace	
177.0	182.0	Tuff (2f, 1a)		42	533	71.0	74.0	3.0			trace
182.0	188.8	Lapilli Basalt (1c)		534	82.8	85.8	3.0			0.01	
188.8	219.3	Tuff (2f, 1a)		535	96.6	99.6	4.0			trace	
219.3	227.0	Quartz - Carbonate Veins, Brecciated Tuff		536	131.5	136.5	4.0			trace	
227.0	235.0	Silicified Tuff (2f)		537	154.0	158.0	5.0			trace	
235.0	247.0	Quartz - Carbonate Veins, Brecciated Tuff		538	172.0	177.0	5.0			trace	
247.0	282.0	Tuff (2f, 1a)		539	188.8	192.3	3.5			trace	
282.0	303.0	Andesite (1a)		540	216.3	219.3	3.0			trace	
303.0	342.0	Tuff (2f)		541	219.3	222.0	2.7			trace	
342.0	412.0	Basalt (1d)		542	222.0	227.0	5.0			trace	
412.0	447.0	Peridotite (4e)		543	227.0	232.0	5.0			trace	
				544	232.0	237.0	5.0			trace	
				545	237.0	242.0	5.0			trace	
				546	242.0	247.0	5.0			trace	
				547	247.0	252.0	5.0			0.02	
				548	256.0	259.0	3.0			trace	
				549	287.0	289.2	2.2			0.01	
				550	296.0	300.0	4.0			trace	

21.9 DL
run of
7 samples

35.7 ft
run of
8 samples

DIAMOND DRILL RECORD

NAME OF PROPERTY TESSIE LAKE
 HOLE NO. _____ LENGTH _____
 LOCATION _____
 LATITUDE _____ DEPARTURE _____
 ELEVATION _____ AZIMUTH _____ DIP _____
 STARTED _____ FINISHED _____

FOOTAGE	DIP	AZIMUTH	FOOTAGE	DIP	AZIMUTH

HOLE NO. J-86-2 SHEET NO. SUMM/ #2/
 REMARKS _____
 LOGGED BY MB

FOOTAGE		DESCRIPTION	SAMPLE				ASSAYS				
FROM	TO		NO.	% SULPHIDES	FOOTAGE			%	%	OZ/TON	OZ/TON
					FROM	TO	TOTAL				
			42551		364.0	367.0	3.0			trace	
			552		382.0	391.0	4.0			trace	
			553		412.0	416.0	4.0			trace	
			42956		424.0	428.0	4.0			0.01	
			957		434.0	438.0	4.0			trace	
			958		443.0	447.0	4.0			trace	

PROTEUS RESOURCES INC.

DIAMOND DRILL RECORD

NAME OF PROPERTY JESSIE LAKE
 HOLE NO. J86-3 LENGTH 487 feet
 LOCATION grid coordinates 3700 West / 8470 South
 LATITUDE _____ DEPARTURE _____
 SURFACE ELEVATION 1120 ft ASL AZIMUTH 336° grid north DIP -45°
 STARTED August 26 / 86 FINISHED Aug 27 / 86

FOOTAGE	DIP	AZIMUTH	FOOTAGE	DIP	AZIMUTH
collar	-45°				
397'	-48°				

HOLE NO. J86-3 SHEET NO. SUMMARY #1
 REMARKS Claim K794546

LOGGED BY M. Beauregard

FOOTAGE		DESCRIPTION	SUMMARY OF SAMPLES				ASSAYS					
FROM	TO		NO.	% SULPHIDES	FOOTAGE			%	%	OZ/TON	OZ/TON	
					FROM	TO	TOTAL					
		<u>SUMMARY OF LITHOLOGIES</u>										
2.0	8.0	Overburden	42	554	15.0	18.0	3.0			trace		
8.0	27.5	Andesite (la, ld)		555	19.5	21.5	2.8			trace		
27.5	72.8	Andesite (la)		556	70.2	72.8	2.6			0.01		
72.8	113.5	Basalt (ld)		557	72.8	77.0	4.2			0.01		
113.5	163.2	Tuff (ZF, la)		558	77.0	81.5	4.5			trace		
163.2	290.2	Basalt (ld)		559	81.5	86.5	5.0			trace		
290.2	297.8	Quartz Feldspar Porphyry (5d)		560	106.0	110.0	4.0			0.01		
297.8	303.2	Andesite (la, ld)		561	110.0	113.5	3.5			trace		
303.2	319.6	Tuff Breccia (lg)		562	118.0	120.0	2.0			0.01		
319.6	327.1	Andesite (la)		563	120.0	122.0	2.0			trace		
327.1	344.0	Silicified Basalt (ld)		564	123.8	127.0	3.2			trace		
344.0	352.0	Quartz - Carbonate Alteration Zone		565	138.7	140.7	2.0			trace		
352.0	368.0	Feldspar Porphyry (5b)		566	143.5	145.6	2.1			trace		
368.0	420.0	Andesite (la, ld)		567	149.8	152.3	2.5			trace		
420.0	436.0	Basalt (ld, la)		568	152.3	155.8	3.5			trace		
436.0	445.7	Carbonate - Quartz Vein		569	163.2	167.0	3.8			0.01		
445.7	487.0	Andesite (la, ld)		570	170.5	174.5	4.0			0.01		
				571	184.3	188.0	3.7			0.02		
				572	200.3	204.8	4.5			trace		
				573	206.5	211.0	4.5			0.01		
				574	214.3	216.3	2.0			0.06	trace	
				575	217.5	219.7	2.2			0.01		
				576	219.7	223.0	3.3			0.01		
				577	223.0	225.0	2.0			trace		
				578	246.5	250	3.5			trace		
				579	250.0	254.0	4.0			0.02		
				580	261.5	264.0	2.5			trace		

16.3 foot run of 4 consecutive samples

7.5 foot run of 3 samples

KOTEUS RESOURCES INC
DIAMOND DRILL RECORD

NAME OF PROPERTY JESSIE LAKE
 HOLE NO. _____ LENGTH _____
 LOCATION _____
 LATITUDE _____ DEPARTURE _____
 ELEVATION _____ AZIMUTH _____ DIP _____
 STARTED _____ FINISHED _____

FOOTAGE	DIP	AZIMUTH	FOOTAGE	DIP	AZIMUTH

HOLE NO. J86-3 SHEET NO. SUMMARY #2

REMARKS _____

LOGGED BY M.B

FOOTAGE		DESCRIPTION	SAMPLE				ASSAYS				
FROM	TO		NO.	% SULPHIDES	FOOTAGE			%	%	OZ/TON	OZ/TON
					FROM	TO	TOTAL				
			(continued)								
		16.6 foot run of 4 consecutive samples	47 581		299.1	301.7	2.6			trace	
			582		303.0	307.0	4.0			trace	
			583		307.0	311.0	4.0			trace	
			584		311.0	315.0	4.0			trace	
			585		315.0	319.6	4.6			trace	
		48.4 foot run of 15 consecutive samples	586		327.1	332.0	4.9			trace	
			587		332.0	336.0	4.0			trace	
			588		336.0	340.0	4.0			trace	
			589		340.0	344.0	4.0			trace	trace
			590		344.0	348.0	4.0			0.06	0.02
			591		348.0	352.0	4.0			0.06	0.03
			592		352.0	355.0	3.0			trace	trace
			593		355.0	360.0	5.0			trace	
			594		360.0	364.0	4.0			trace	
			595		364.0	366.0	2.0			0.01	
			596		366.0	367.5	1.5			trace	
			597	VG	367.5	368.5	1.0			2.68	Carry of 2 assays
			598		368.5	370.0	1.5			0.02	trace
			599		370.0	371.5	1.5			0.01	trace
			600		371.5	375.5	4.0			0.02	trace
			601		381.0	383.0	2.0			0.02	trace
			602		390.8	392.8	2.0			0.04	trace
			603		419.0	422.0	3.0			0.01	trace
			604		431.5	433.5	2.0			trace	
			605		433.5	436.0	2.5			trace	

DIAMOND DRILL RECORD

NAME OF PROPERTY JESSIE LAKE
 HOLE NO. _____ LENGTH _____
 LOCATION _____
 LATITUDE _____ DEPARTURE _____
 ELEVATION _____ AZIMUTH _____ DIP _____
 STARTED _____ FINISHED _____

FOOTAGE	DIP	AZIMUTH	FOOTAGE	DIP	AZIMUTH

HOLE NO. J86-3 SHEET NO. Summ #3
 REMARKS _____

LOGGED BY MIB

FOOTAGE		DESCRIPTION	SAMPLE				ASSAYS				
FROM	TO		NO.	% SULPHIDES	FOOTAGE			%	%	OZ/TON	OZ/TON
					FROM	TO	TOTAL				
		17.2 foot run of 6 consecutive samples	42606		436.0	439.0	3.0			0.02	
			607		439.0	442.0	3.0			trace	trace
			608		442.0	445.7	3.7			0.10	0.002
			609		445.7	448.7	3.0			trace	trace
			610		471.0	471.5	3.5			0.01	
			additional samples	42959		211.0	214.3	3.3			trace
			960		216.3	217.5	1.2			trace	
			961		375.5	378.5	3.0			0.01	
			962		378.5	381.0	2.5			trace	
			963		383.0	387.8	3.8			trace	
			964		387.8	390.8	3.0			trace	
			965		392.8	395.8	3.0			trace	

PROTEUS RESOURCES INC.
DIAMOND DRILL RECORD

NAME OF PROPERTY JESSIE LAKE
 HOLE NO. J86-4 LENGTH 337 ft.
 LOCATION Line 38+00 West / 7+75 South
 LATITUDE _____ DEPARTURE _____
 SURFACE ELEVATION 1130 ft ASL AZIMUTH 336° drill north DIP -45°
 STARTED Sept. 8/86 FINISHED Sept. 9/86

FOOTAGE	DIP	AZIMUTH	FOOTAGE	DIP	AZIMUTH
collar	-47.5°				
297'	-50°				

HOLE NO. J86-4 SHEET NO. SUMMARY
 REMARKS Claim: K797546 #1

LOGGED BY M. Beawegard

FOOTAGE		DESCRIPTION	SUMMARY OF SAMPLES					ASSAYS			
FROM	TO		NO.	% SULPHIDES	FOOTAGE			% Cu	% Fe	OZ/TON	OZ/TON
					FROM	TO	TOTAL				
		<u>SUMMARY OF LITHOLOGIES</u>									
2.0	10.0	Overburden	42	715	29.5	32.5	3.0			trace	
10.0	15.0	Basalt (ld)		716	32.5	35.5	3.0			trace	
15.0	32.0	Andesite (la)		717	50.5	53.5	3.0			trace	
32.0	71.8	Basalt (ld)		718	53.5	56.5	3.0			0.01	
71.8	92.0	Andesite (la, 2f)		719	56.5	59.0	2.5			trace	
92.0	232.4	Basalt (ld, la)		720	59.0	63.0	4.0			trace	
232.4	241.0	Shaded Basalt (ld)		721	63.0	67.0	4.0			0.01	
241.0	255.4	Alteration Zone		722	69.3	71.8	2.5			0.01	
255.4	263.5	Alteration Zone and Altered Basalt (ld)		723	71.8	74.3	2.5			trace	
263.5	337.0	Basalt (ld, la)		724	81.0	84.0	3.0			trace	
				725	125.5	128.5	3.0			trace	
				726	174.5	177.5	3.0			trace	
				727	191.0	193.0	2.0			trace	
				728	226.4	229.4	3.0			trace	
				729	229.4	232.4	3.0			trace	
				730	232.4	237.5	2.1			trace	
				731	237.5	236.5	2.0			trace	
				732	236.5	239.0	2.5			0.01	
				733	239.0	241.0	2.0			trace	
				734	241.0	243.0	2.0			trace	
				735	243.0	244.7	1.7			trace	
				736	244.7	246.0	1.3			0.01	
				737	246.0	247.7	1.7			0.02	
				738	247.7	249.7	2.0			0.01	
				739	249.7	252.7	3.0			0.02	
				740	252.7	255.7	3.0			0.02	
				741	255.7	257.3	1.6			trace	
				742	257.3	260.7	3.4			0.01	
				743	260.7	262.5	1.8			0.02	
				744	262.5	263.5	1.0			0.02	

16.5 ft
run of
5 samples

43.6 ft
run of
19
consecutive
samples

VG

PROTEUS RESOURCES INC.
DIAMOND DRILL RECORD

NAME OF PROPERTY JESSIE LAKE
 HOLE NO. _____ LENGTH _____
 LOCATION _____
 LATITUDE _____ DEPARTURE _____
 ELEVATION _____ AZIMUTH _____ DIP _____
 STARTED _____ FINISHED _____

FOOTAGE	DIP	AZIMUTH	FOOTAGE	DIP	AZIMUTH

HOLE NO. JB6-4 SHEET NO. SUMMER
E2/2
 REMARKS _____

LOGGED BY MB

FOOTAGE		DESCRIPTION	SAMPLES				ASSAYS				
FROM	TO		NO.	% SULPH. IDES	FOOTAGE			%	%	OZ/TON	OZ/TON
					FROM	TO	TOTAL				
			42745		263.5	267.0	3.5			trace	
			746		267.0	270.0	3.0			trace	
			747		288.0	291.0	3.0			trace	
			748		296.0	299.0	3.0			trace	
			749		299.0	302.0	3.0			0.01	
			750		302.0	305.0	3.0			trace	

↑
9.0ft
run of
3 samples

PROTEUS RESOURCES INC.
DIAMOND DRILL RECORD

NAME OF PROPERTY JESSIE LAKE
 HOLE NO. J86-5 LENGTH 547 ft.
 LOCATION grid coordinates line 40+00 west / B+30 South
 LATITUDE _____ DEPARTURE _____
 SURFACE ELEVATION 1113 ft ASL AZIMUTH 336° Az. DIP -45°
 STARTED Sept. 5/86 FINISHED Sept 7/86

FOOTAGE	DIP	AZIMUTH	FOOTAGE	DIP	AZIMUTH
collar	-45°				
397'	-50°				

HOLE NO. J86-5 SHEET NO. SUMM
 REMARKS Claim K794546

LOGGED BY M. Beauregard

FOOTAGE		DESCRIPTION	SUMMARY OF SAMPLES				ASSAYS				
FROM	TO		NO.	% SULPHIDES	FOOTAGE			%	%	OZ/TON	OZ/TON
					FROM	TO	TOTAL				
		<u>SUMMARY OF LITHOLOGIES</u>	42		20.5	24.0	3.5			trace	
2.0	8.0	Overburden	648		24.0	27.0	3.0			trace	
8.0	24.0	Silicous Andesite (1a, 3)	650		52.0	54.0	2.0			trace	
24.0	60.4	Basalt (1d, 1a)	651		54.0	56.0	2.0			0.02	
60.4	88.0	Tuff (2f, 1a, 3)	652		56.0	59.5	3.5			trace	
88.0	271.2	Basalt (1d)	653		59.5	62.7	3.2			trace	
271.2	296.2	Andesite (1a, 1d)	654		97.0	100.0	3.0			0.01	
296.2	318.5	Feldspar Porphyry (5b)	655		100.0	103.0	3.0			trace	
318.5	733.2	Alteration Zone, Qtz-Carbonate-Chloride Veins, Altered Andesite (1a)	656		103.0	107.0	3.0			trace	
333.2	343.5	Altered Andesite (1a)	657		136.0	140.0	4.0			trace	
343.5	387.0	Basalt (1d)	658		168.0	170.5	2.5			trace	
387.0	466.8	Andesite (1a, 2f)	659		186.0	191.0	5.0			trace	
466.8	484.6	Basalt (1d)	660		201.0	204.0	3.0			trace	
484.6	535.5	Feldspar Porphyry (5b)	661		247.4	250.4	3.0			trace	
535.5	547.0	Basalt (1d)	662		250.4	254.4	4.0			trace	
			663		254.4	255.5	1.1			0.01	
			664		255.5	259.5	4.0			trace	
			665		271.0	274.0	3.0			0.01	
			666		274.0	277.0	3.0			trace	
			667		288.0	292.0	4.0			trace	
			668		292.0	294.0	2.0			trace	
			669		294.0	296.0	2.0			trace	
			670		296.0	297.0	1.0			trace	
			671		297.0	299.0	2.0			trace	
			672		299.0	301.0	2.0			trace	
			673		301.0	304.0	3.0			trace	
			674		304.0	307.0	3.0			trace	

10.7 ft
run of
4 samples

9 ft
run of
3 samples

12.1 ft
run of
4 samples

DIAMOND DRILL RECORD

NAME OF PROPERTY JESSIE LAKE
 HOLE NO. _____ LENGTH _____
 LOCATION _____
 LATITUDE _____ DEPARTURE _____
 ELEVATION _____ AZIMUTH _____ DIP _____
 STARTED _____ FINISHED _____

FOOTAGE	DIP	AZIMUTH	FOOTAGE	DIP	AZIMUTH

HOLE NO. J86-5 SHEET NO. SUMMARY #2/3

REMARKS _____

LOGGED BY M.B.

FOOTAGE		DESCRIPTION	SAMPLE				ASSAYS				
FROM	TO		NO.	% SULPHIDES	FOOTAGE			%	%	OZ/TON	OZ/TON
					FROM	TO	TOTAL				
			42	676	310.0	313.0	3.0			Trace	
				677	313.0	315.5	2.5			0.01	
				678	315.5	318.0	2.5			Trace	
				679	318.0	319.0	1.0			0.02	
				680	319.0	320.8	1.8			Trace	
				681	320.8	322.5	1.7			Trace	
				682	322.5	325.0	2.5			Trace	
				683	325.0	328.1	3.1			Trace	
				684	328.1	329.8	1.7			0.01	
				685	329.8	331.0	1.2			Trace	
				686	331.0	333.2	2.2			0.01	
				687	333.2	337.0	3.8			Trace	
				688	337.0	340.0	3.0			0.01	
				689	340.0	343.5	3.5			Trace	
				690	343.5	347.0	3.5			Trace	
				691	367.0	370.0	3.0			Trace	
				692	372.0	374.0	2.0			Trace	
				693	370.0	373.0	3.0			Trace	
				694	393.0	396.0	3.0			Trace	
				695	396.0	399.0	3.0			Trace	
				696	399.0	402.0	3.0			Trace	
				697	402.0	405.0	3.0			Trace	
				698	405.0	408.0	3.0			Trace	
				699	424.0	427.0	3.0			0.01	
				700	463.0	464.3	1.3			Trace	
				701	464.3	466.8	2.5			Trace	
				702	466.8	470.0	3.2			Trace	

59 ft.
run of 24
consecutive
samples.

18 ft
run of
6 samples

DIAMOND DRILL RECORD

NAME OF PROPERTY JESSIE LAKE
 HOLE NO. _____ LENGTH _____
 LOCATION _____
 LATITUDE _____ DEPARTURE _____
 ELEVATION _____ AZIMUTH _____ DIP _____
 STARTED _____ FINISHED _____

FOOTAGE	DIP	AZIMUTH	FOOTAGE	DIP	AZIMUTH

HOLE NO. J86-5 SHEET NO. SUMMA

REMARKS _____ #3

LOGGED BY MB

FOOTAGE		DESCRIPTION	SAMPLE				ASSAYS				
FROM	TO		NO.	% SULPHIDES	FOOTAGE		TOTAL	%	%	OZ/TON	OZ/TON
					FROM	TO					
		12 ft run of 7 samples 14.5 ft run of 5 samples	42	703	478.6	481.6	3.0			0.01	
			704		481.6	484.6	3.0			trace	
			705		484.6	487.6	3.0			trace	
			706		487.6	490.6	3.0			trace	
			707		497.0	500.0	3.0			trace	
			708		507.0	510.0	3.0			trace	
			709		517.0	520.0	3.0			trace	
			710		527.0	530.0	3.0			trace	
			711		530.0	533.0	3.0			trace	
			712		533.0	535.5	2.5			trace	
			713		535.5	538.5	3.0			0.01	
			714		538.5	541.5	3.0			trace	

PROTEUS RESOURCES INC. DIAMOND DRILL RECORD

NAME OF PROPERTY JESSIE LAKE
 HOLE NO. J86-6 LENGTH 397 feet
 LOCATION VLF grid coordinates Line 8100W / 14400 North
 LATITUDE _____ DEPARTURE _____
 ELEVATION 1193 ft ASL AZIMUTH 156° grid south DIP -45°
 STARTED Sept. 1/86 FINISHED Sept. 4/86

FOOTAGE	DIP	AZIMUTH	FOOTAGE	DIP	AZIMUTH
collar	-47°				
397'	-55°				

HOLE NO. J86-6 SHEET NO. SUMMARY
 REMARKS Claim K74555 #1

LOGGED BY M. Beauregard

FOOTAGE		DESCRIPTION	SUMMARY OF 39 SAMPLES				ASSAYS			
FROM	TO		NO.	% SULPHIDES	FOOTAGE		%	%	OZ/TON	OZ/TON
					FROM	TO				
		<u>SUMMARY OF LITHOLOGIES</u>								
2.0	5.8	Overburden	611		5.8	8.8	3.0			0.01
5.8	52.5	Lapilli Basalt, Debris Flow (1h, 1k)	612		21.0	25.0	4.0			0.04
52.5	116.0	Basalt (1d, 1a)	613		29.0	34.0	5.0			0.01
116.0	200.0	Lapilli Basalt, Debris Flow (1h, 1k)	614		34.0	38.0	4.0			trace
200.0	220.0	Tuff (2f)	615		38.0	41.0	3.0			trace
220.0	248.0	Chert (3, 2f)	616		41.0	44.0	3.0			0.02
248.0	262.0	Andesite (1a)	617		44.0	48.5	4.5			0.02
262.0	313.0	Porphyritic Andesite (1b)	618		48.5	52.5	4.0			trace
313.0	397.0	Basalt (1d, 1a)	619		52.5	56.5	4.0			trace
			620		73.0	75.0	2.0			trace
			621		90.0	93.0	3.0			trace
			622		93.0	97.0	4.0			trace
			623		97.0	101.0	4.0			trace
			624		116.0	121.0	5.0			trace
			625		133.5	135.5	2.0			0.02
			626		196.0	200.0	4.0			trace
			627		200.0	204.0	4.0			trace
			628		204.0	208.0	4.0			0.01
			629		208.0	212.0	4.0			0.02
			630		212.0	216.0	4.0			0.01
			631		216.0	220.0	4.0			0.01
			632		220.0	224.0	4.0			trace
			633		224.0	228.0	4.0			trace
			634		228.0	231.0	3.0			trace nil
			635		231.0	234.0	3.0			trace nil
			636		234.0	237.0	3.0			trace nil
			637		237.0	240.0	3.0			trace nil

27.5 ft
run of
7 consecutive
samples

11 ft
run of
3 samples

US RESOURCES INC.
DIAMOND DRILL RECORD

NAME OF PROPERTY JESSIE LAKE
 HOLE NO. _____ LENGTH _____
 LOCATION _____
 LATITUDE _____ DEPARTURE _____
 ELEVATION _____ AZIMUTH _____ DIP _____
 STARTED _____ FINISHED _____

FOOTAGE	DIP	AZIMUTH	FOOTAGE	DIP	AZIMUTH

HOLE NO. J86-6, SHEET NO. SUMMARY #2/2

REMARKS _____

LOGGED BY MB

FOOTAGE		DESCRIPTION	SAMPLE				ASSAYS					
FROM	TO		NO.	% SULPHIDES	FOOTAGE			%	%	OZ/TON	OZ/TON	
					FROM	TO	TOTAL					
		71 foot run of 19 consecutive samples	42 638		240.0	243.0	3.0			trace	nil	
			639		243.0	246.0	3.0			trace	nil	
			640		246.0	248.2	2.2			trace	nil	
			641		248.2	252.0	3.8			trace		
			642		252.0	257.0	5.0			trace		
			643		257.0	262.0	5.0			0.01		
			644		262.0	267.0	5.0			trace		
			645		307.0	310.0	3.0			0.01		
			646		359.5	364.0	4.5			trace		
			647		364.0	368.0	4.0			trace		
			additional samples	42 966		17.0	21.0	4.0			trace	
				967		25.0	29.0	4.0			trace	

PROTEUS RESOURCES INC.
DIAMOND DRILL RECORD

NAME OF PROPERTY JESSIE LAKE
 HOLE NO. J86-7 LENGTH 337 ft.
 LOCATION grid coordinates Line 37 West / 7+70 South
 LATITUDE SURFACE ELEVATION 1136 ft ASL DEPARTURE 336° grid North AZIMUTH -45°
 STARTED Sept. 10/86 FINISHED Sept 11/86

FOOTAGE	DIP	AZIMUTH	FOOTAGE	DIP	AZIMUTH
collar	-44°				
307'	-49°				

HOLE NO. J86-7 SHEET NO. SUMMARY
 REMARKS Claim K 7945 46
 LOGGED BY M. Beauregard

FOOTAGE		DESCRIPTION	SUMMARY OF 32 SAMPLES				ASSAYS				
FROM	TO		NO.	% SULPHIDES	FOOTAGE		%	%	OZ/TON	OZ/TON	
					FROM	TO					TOTAL
		<u>SUMMARY OF LITHOLOGIES</u>									
2.0	10.0	Overburden	42751		16.5	19.0	2.5			trac	
10.0	36.5	Andesite (1a, 3, 1d)	752		22.0	25.0	3.0			trac	
36.5	65.8	Basalt (1d, 1a)	753		35.8	38.8	3.0			trac	
65.8	204.6	Andesite (1a, 2f, 1d)	754		57.5	60.5	3.0			0.01	
204.6	220.5	Basalt (1d)	755		60.5	63.5	3.0			trac	
220.5	233.2	Alteration Zone	756		128.5	131.0	2.5			trac	
233.2	248.8	Feldspar Porphyry (5b)	757		131.0	134.0	3.0			trac	
248.8	285.0	Basalt (1d) Brecciated	758		138.6	141.8	3.2			trac	
285.0	310.0	Basalt (1d)	759		202.0	205.0	3.0			0.01	
310.0	323.0	Alteration Zone	760		211.5	214.5	3.0			trac	
323.0	337.0	Basalt (1d)	761		214.5	217.5	3.0			0.01	
		End of Hole	762		217.5	220.5	3.0			trac	
			763		220.5	223.5	3.0			0.02	
			764		223.5	225.5	2.0			trac	
			765		225.5	228.0	2.5			trac	
			766		228.0	230.5	2.5			trac	
			767		230.5	233.2	2.7			trac	
			768		233.2	234.8	1.6			trac	
			769		234.8	237.8	3.0			trac	
			770		237.8	240.8	3.0			trac	
			771		240.8	243.8	3.0			trac	
			772		243.8	246.2	2.4			trac	
			773		246.2	248.8	2.2			0.02	
			774		248.8	251.8	3.0			trac	
			775		251.8	254.8	3.0			trac	
			776		307.0	310.0	3.0			0.01	
			777		310.0	313.5	3.5			trac	

43. 3 ft
 run of 16
 consecutive
 samples



DIAMOND DRILL RECORD

NAME OF PROPERTY JESSIE LAKE
 HOLE NO. _____ LENGTH _____
 LOCATION _____
 LATITUDE _____ DEPARTURE _____
 ELEVATION _____ AZIMUTH _____ DIP _____
 STARTED _____ FINISHED _____

FOOTAGE	DIP	AZIMUTH	FOOTAGE	DIP	AZIMUTH

HOLE NO. J86-7 SHEET NO. SUM 1

REMARKS _____

LOGGED BY MB

FOOTAGE		DESCRIPTION	SAMPLE				ASSAYS				
FROM	TO		NO.	% SULPH. IDES	FOOTAGE			%	%	OZ/TON	OZ/TON
					FROM	TO	TOTAL				
		19 ft run of 7 consecutive samples	778		313.5	316.0	2.5				
			779		316.0	318.5	2.5				
			780		318.5	321.0	2.5				
			781		321.0	323.0	2.0				
			782		323.0	326.0	3.0				

PROTEUS RESOURCES INC. DIAMOND DRILL RECORD

NAME OF PROPERTY JESSIE LAKE
 HOLE NO. J86-8 LENGTH 317 ft.
 LOCATION grid coordinates LINE 3500 WEST / 7190 SOUTH
 LATITUDE _____ DEPARTURE _____
 SURFACE ELEVATION 1122 ft ASL AZIMUTH 336° grid North DIP -45°
 STARTED Sept 12/86 FINISHED Sept 13/86

FOOTAGE	DIP	AZIMUTH	FOOTAGE	DIP	AZIMUTH
collar	-45°				
297'	-48°				

HOLE NO. J86-8 SHEET NO. SUMM

REMARKS Claim K794546 (co
K794545 (b

LOGGED BY M. Beauregard

FOOTAGE		DESCRIPTION	SUMMARY OF SAMPLES				ASSAYS				
FROM	TO		NO.	% SULPHIDES	FOOTAGE			% Cu	% Fe	OZ/TON	OZ/TON
					FROM	TO	TOTAL				
<u>SUMMARY OF LITHOLOGIES</u>			24								
3.0	30.0	Overburden	783		59.0	62.0	3.0			0.002	
30.0	39.0	Basalt (ld)	784		65.5	67.8	2.3			trace	
39.0	104.0	Andesite (1a, 2f)	785		100.0	103.0	3.0			0.002	
104.0	129.8	Tuff (2f, 1a)	786		134.0	138.0	4.0			0.002	
129.8	165.8	Andesite (1a)	787		155.6	158.0	2.4			trace	
165.8	209.0	Basalt (ld)	788		165.8	169.3	3.5			0.006	
209.0	230.7	Andesite (1a)	789		180.0	182.0	2.0			0.002	
230.7	235.2	Sheared Basalt (ld)	790		209.0	211.0	2.0			0.002	
235.2	284.1	Feldspar Porphyry (5b)	791		211.0	213.5	2.5			trace	
			792		224.7	227.7	3.0			0.002	
			793		227.7	230.7	3.0			0.002	
			794		230.7	232.7	2.0			0.002	
			795		232.7	235.2	2.5			trace	
			796		235.2	238.1	2.9			trace	
			797		238.1	239.5	1.4			trace	
			798		239.5	242.5	3.0			0.002	
			799		242.5	245.5	3.0			trace	
			800		260.0	263.0	3.0			trace	
			801		263.0	265.2	2.2			trace	
			802		265.2	267.5	2.3			trace	
			803		267.5	270.5	3.0			trace	
			804		281.1	284.1	3.0			trace	
			805		284.1	287.1	3.0			trace	
			806		287.1	290.1	3.0			trace	

20.8ft
run of
8 consecutive
samples

10.5ft
run of
4 samples

9.0ft
run of
3 samples

DIAMOND DRILL RECORD

NAME OF PROPERTY JESSIE LAKE
 HOLE NO. J 86-9 LENGTH 307 ft
 LOCATION grid coordinates Line 3100 West / 5+25 South
 LATITUDE _____ DEPARTURE _____
 SURFACE ELEVATION 1112 ft ASL AZIMUTH 156° grid South DIP -45°
 STARTED Sept 14 / 86 FINISHED Sept. 15 / 86

FOOTAGE	DIP	AZIMUTH	FOOTAGE	DIP	AZIMUTH
<i>collar</i>	<i>-45°</i>				
<i>297 ft</i>	<i>-48°</i>				

SUMM.

HOLE NO. J 86-9 SHEET NO. _____
 REMARKS Claim K794545 (collar)
K794544 (bottom)
 LOGGED BY M. Beauregard

FOOTAGE		DESCRIPTION	SUMMARY OF 27 SAMPLES				ASSAYS				
FROM	TO		NO.	% SULPHIDES	FOOTAGE		%	%	OZ/TON	OZ/TON	
					FROM	TO					TOTAL
<u>SUMMARY OF LITHOLOGIES</u>			42								
2.0	22.0	Overburden	807		48.0	50.0	2.0			0.004	
22.0	24.5	Boulders	808		60.5	63.5	3.0			trace	
24.5	49.0	Tuff Breccia, Porphyritic Andesite (1g, 1b)	809		93.0	97.6	4.6			trace	
49.0	178.2	Tuff Breccia, Andesite (1g, 1a)	810		155.0	158.0	3.0			trace	
178.2	187.2	Sheared Basalt (1d, 1a)	811		167.5	170.5	3.0			trace	
187.2	205.2	Feldspar Porphyry (5b)	812		175.2	178.2	3.0			0.002	
205.2	236.1	Silicified Basalt (1d)	813		178.2	181.2	3.0			0.002	
236.1	307.0	Basalt (1d)	814		181.2	184.2	3.0			trace	
			815		184.2	187.2	3.0			0.004	
			816		187.2	190.2	3.0			0.002	
			817		190.2	193.2	3.0			0.002	
			818		193.2	196.2	3.0			0.002	
			819		196.2	199.2	3.0			trace	
			820		199.2	202.2	3.0			0.002	
			821		202.2	205.2	3.0			0.004	
			822		205.2	207.2	2.0			trace	
			823		207.2	209.2	2.0			0.002	
			824		209.2	212.2	3.0			0.014	
			825		212.2	214.2	2.0			0.002	
			826		214.2	216.7	2.5			0.002	
			827		216.7	219.7	3.0			trace	
			828		219.7	222.7	3.0			0.002	
			829		222.7	225.7	3.0			0.002	
			830		233.1	236.1	3.0			0.002	
			831		248.0	250.0	2.0			trace	
			832		262.5	264.5	2.0			0.002	
			833		283.0	286.0	3.0			trace	

40.5 ft
run of
18 samples.

DIAMOND DRILL RECORD

NAME OF PROPERTY JESSIE LAKE
 HOLE NO. J86-10 LENGTH 297 ft
 LOCATION grid coordinates Line 36 to 5 West / 7 to 0 South
 LATITUDE _____ DEPARTURE _____
 SURFACE ELEVATION 1135 ft ASL AZIMUTH 336° grid North DIP -45°
 STARTED Sept 16 / 86 FINISHED Sept 17 / 86

FOOTAGE	DIP	AZIMUTH	FOOTAGE	DIP	AZIMUTH
collar	-46°				
287 ft	-49°				

HOLE NO. J86-10 SHEET NO. SUMMARY #1/2
 REMARKS Claim K794546

LOGGED BY M. Beauregard

FOOTAGE		DESCRIPTION	SUMMARY OF SAMPLES				ASSAYS				
FROM	TO		NO.	% SULPHIDES	FOOTAGE			%	%	OZ/TON	OZ/TON
					FROM	TO	TOTAL				
		<u>SUMMARY OF LITHOLOGIES</u>									
1.0	10.0	Overburden	42	834	25.5	28.0	2.5			trace	
10.0	47.5	Basalt (ld)		835	36.0	39.5	3.5			trace	
47.5	149.7	Andesite (1a, 2f)		836	39.5	42.5	3.0			trace	
149.7	162.0	Altered Basalt (ld, 1a)		837	46.5	49.5	3.0			trace	
162.0	203.8	Basalt (ld)		838	142.1	145.1	3.0			trace	
203.8	229.2	Andesite (1a, ld)		839	145.1	147.5	2.4			trace	
229.2	241.2	Alteration Zone		840	147.5	149.7	2.2			trace	
241.2	257.0	Feldspar Porphyry (5b)		841	149.7	151.7	2.0			trace	
257.0	281.5	Basalt (ld, 1a)		842	151.7	155.0	3.3			trace	
281.5	297.0	Andesite (1a, ld)		843	155.0	158.0	3.0			trace	
				844	158.0	162.0	4.0			trace	
				845	162.0	166.0	4.0			trace	
				846	166.0	169.0	3.0			0.002	
				847	173.0	175.0	2.0			trace	
				848	200.8	203.8	3.0			trace	
				849	221.6	224.6	3.0			trace	
				850	224.6	227.6	3.0			trace	
				851	227.6	229.2	1.6			trace	
				852	229.2	231.8	2.6			0.002	
				853	231.8	234.8	3.0			0.010	
				854	234.8	237.8	3.0			0.016	
				855	237.8	239.8	2.0			0.028	
				856	239.8	241.2	1.4			0.016	
				857	241.2	243.2	2.0			trace	
				858	243.2	246.2	3.0			trace	

26.8 ft
run of
9 samples

24.6 ft
run of
10 samples

DIAMOND DRILL RECORD

SUMMARY

NAME OF PROPERTY JESSIE LAKE
 HOLE NO. _____ LENGTH _____
 LOCATION _____
 LATITUDE _____ DEPARTURE _____
 ELEVATION _____ AZIMUTH _____ DIP _____
 STARTED _____ FINISHED _____

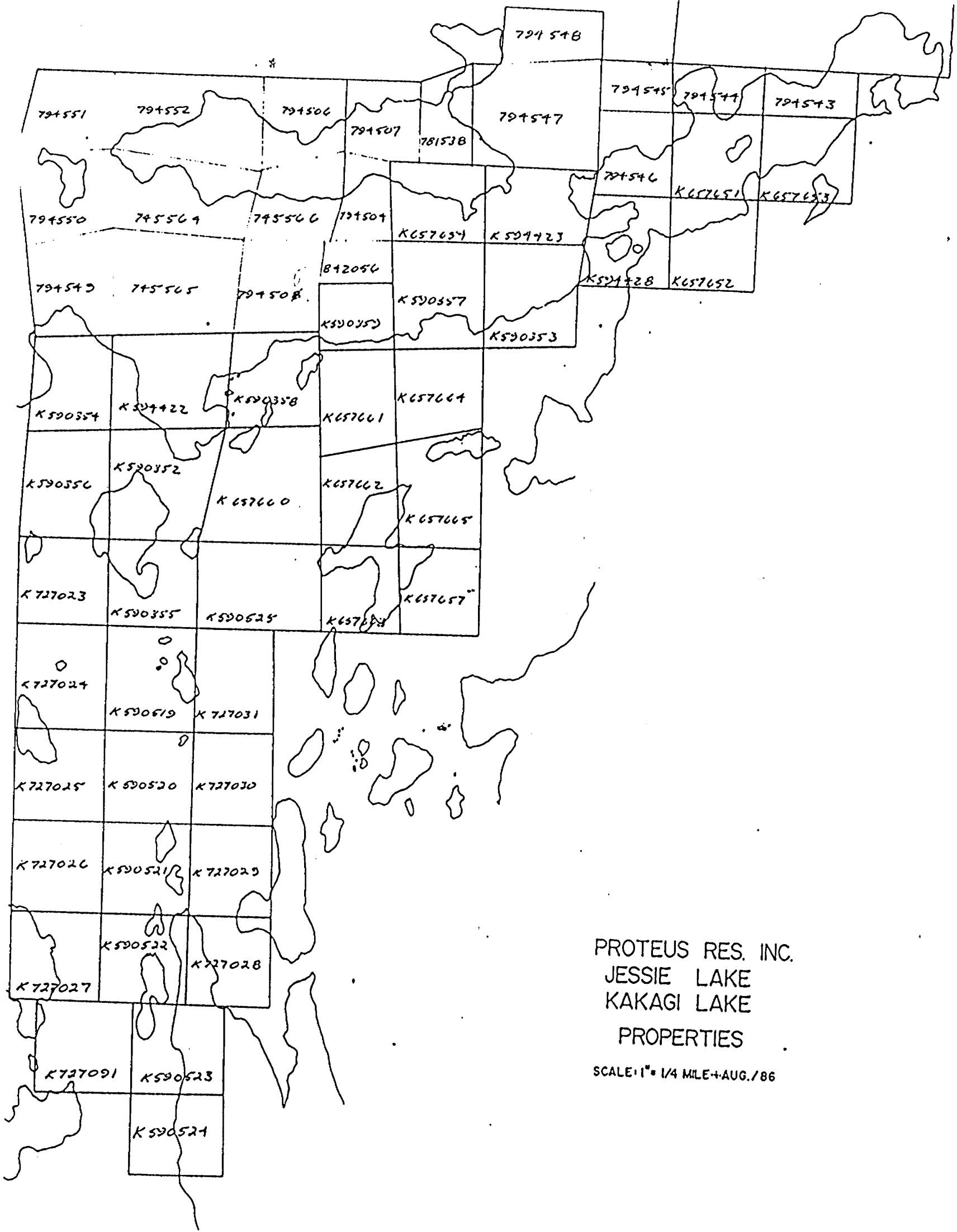
FOOTAGE	DIP	AZIMUTH	FOOTAGE	DIP	AZIMUTH

HOLE NO. J86-10 SHEET NO. #2/2

REMARKS _____

LOGGED BY MB

FOOTAGE		DESCRIPTION	SAMPLE				ASSAYS				
FROM	TO		NO.	% SULPHIDES	FOOTAGE			%	%	OZ/TON	OZ/TON
					FROM	TO	TOTAL				
			42 859		251.0	254.0	3.0			trace	
			860		254.0	257.0	3.0			trace	
			861		257.0	260.0	3.0			trace	
			862		266.5	269.5	3.0			trace	
			863		269.5	272.5	3.0			trace	
			864		272.5	275.5	3.0			trace	
			865		275.5	278.5	3.0			trace	
			866		278.5	281.5	3.0			trace	



PROTEUS RES. INC.
 JESSIE LAKE
 KAKAGI LAKE
 PROPERTIES

SCALE: 1" = 1/4 MILE + AUG. / 86

PROBLEMS RESOLVED 11-1-86 DIAMOND DRILL RECORD

NAME OF PROPERTY JESSIE LAKE
 HOLE NO. J86-11 LENGTH 457 ft
 LOCATION grid coordinates Line 410=West / 8+35 South
 LATITUDE SURFACE ELEVATION 1109 ft ASL DEPARTURE _____
 AZIMUTH 336° grid North DIP -45°
 STARTED Sept 17/86 FINISHED Sept 19/86

FOOTAGE	DIP	AZIMUTH	FOOTAGE	DIP	AZIMUTH
collar	-44°				
347'	-49°				

HOLE NO. J86-11 SHEET NO. SUMMARY
 REMARKS Claim K794546 #1/2

LOGGED BY M. Beauregard

FOOTAGE		DESCRIPTION	SUMMARY OF SAMPLES				ASSAYS				
FROM	TO		NO.	% SULPHIDES	FOOTAGE		%	%	oz/ton	oz/ton	
					FROM	TO	TOTAL				
SUMMARY OF LITHOLOGIES											
1.0	10.0	Overburden	14.24	4	867	20.8	22.8	2.0			Trace
10.0	22.8	Basalt (1d)	run of		868	22.8	26.0	3.2			Trace
22.8	55.5	Tuff (2f, 3)	5 samples		869	26.0	29.0	3.0			Trace
55.5	88.1	Basalt (1d)			870	29.0	32.0	3.0			Trace
88.1	112.1	Chert (3, 1a)			871	32.0	35.0	3.0			Trace
112.1	213.4	Basalt (1d, 1c)			872	46.0	48.0	2.0			Trace
213.4	268.8	Feldspar Porphyry (5b)	10.9 ft		873	53.5	55.5	2.0			Trace
268.8	326.2	Basalt (1d, 1a)	run of		874	55.5	57.5	2.0			Trace
326.2	336.4	Quartz-Feldspar Porphyry (5d)	4 samples		875	85.1	88.1	3.0			Trace
336.4	339.0	Sheared Basalt (1d)			876	88.1	91.6	3.5			Trace
339.0	357.1	Feldspar Porphyry (5b)			877	91.6	94.0	2.4			Trace
357.1	386.3	Basalt (1d, 1a)			878	94.0	96.0	2.0			Trace
386.3	428.6	Feldspar Porphyry (5b)	8 ft.		879	102.5	105.5	3.0			Trace
428.6	457.0	Andesite (1a, 2f)	run of		880	110.0	112.2	2.2			Trace
			3 samples		881	112.2	115.2	3.0			Trace
					882	123.5	126.5	3.0			Trace
					883	173.0	175.0	2.0			0.002
					884	175.0	178.0	3.0			Trace
					885	178.0	181.0	3.0			0.022
			19.1 ft		886	207.4	210.4	3.0			Trace
			run of		887	210.4	213.4	3.0			Trace
			7 samples		888	213.4	214.5	1.1			0.022
					889	214.5	217.5	3.0			0.018
					890	217.5	220.5	3.0			Trace
					891	220.5	223.5	3.0			0.012
					892	223.5	226.5	3.0			Trace
					893	237.0	240.0	3.0			Trace
					894	247.0	250.0	3.0			0.002
					895	257.0	260.0	3.0			0.002

DIAMOND DRILL RECORD

NAME OF PROPERTY JESSIE LAKE

HOLE NO. _____ LENGTH _____

LOCATION _____

LATITUDE _____ DEPARTURE _____

ELEVATION _____ AZIMUTH _____ DIP _____

STARTED _____ FINISHED _____

FOOTAGE	DIP	AZIMUTH	FOOTAGE	DIP	AZIMUTH

HOLE NO. J86-11 SHEET NO. SUMMARY
E2/2

REMARKS _____

LOGGED BY MB

FOOTAGE		DESCRIPTION	SAMPLE			ASSAYS					
FROM	TO		NO.	% SULPHIDES	FOOTAGE		%	%	OZ/TON	OZ/TON	
					FROM	TO					TOTAL
			896		265.8	268.8	3.0			0.010	
			897		268.8	271.8	3.0			0.008	
			898		271.8	274.8	3.0			0.002	
			899		308.0	311.0	3.0			0.010	
			900		314.0	317.0	3.0			trace	
			901		323.2	326.2	3.0			trace	
			902		326.2	327.8	1.6			trace	
			903		327.8	330.4	2.6			trace	
			904		330.4	333.4	3.0			trace	
			905		333.4	336.4	3.0			trace	
			906		336.4	339.0	2.6			trace	
			907		339.0	342.0	3.0			trace	
			908		342.0	345.0	3.0			trace	
			909		345.0	348.0	3.0			0.016	
			910		348.0	351.0	3.0			trace	
			911		351.0	354.0	3.0			0.022	
			912		354.0	357.1	3.1			0.034	
			913		357.1	359.2	2.1			trace	
			914		359.2	361.0	1.8			trace	
			915		371.5	374.5	3.0			trace	
			916		383.3	386.3	3.0			0.002	
			917		386.3	389.3	3.0			trace	
			918		397.0	400.0	3.0			0.002	
			919		407.0	410.0	3.0			trace	
			920		417.0	420.0	3.0			trace	
			921		424.7	427.7	3.0			trace	
			922		427.7	429.1	1.4			trace	
			923		429.1	432.1	3.0			trace	
			924		446.0	449.0	3.0			0.002	

37.8 ft
run of
14
consecutive
samples

7.4 ft
run of
3 samples.

DIAMOND DRILL RECORD

NAME OF PROPERTY JESSIE LAKE
 HOLE NO. J86-12 LENGTH 397 ft
 LOCATION grid coordinates Line 5+00 west / 2+70 North
 LATITUDE _____ DEPARTURE _____
 ELEVATION not determined AZIMUTH 336° grid North DIP -45°
 STARTED Sept 21 / 86 FINISHED Sept 22 / 86

FOOTAGE	DIP	AZIMUTH	FOOTAGE	DIP	AZIMUTH
collar	-44.5				
327'	-48°				

HOLE NO. J86-12 SHEET NO. SUMMARY
 REMARKS Claim K794547

LOGGED BY M. Beauregard

FOOTAGE		DESCRIPTION	SUMMARY OF 25 SAMPLES				ASSAYS			
FROM	TO		NO.	% SULPHIDES	FOOTAGE		%	%	OZ/TON	OZ/TON
					FROM	TO				
		<u>SUMMARY OF LITHOLOGIES</u>								
2.0	4.0	Overburden	925		17.0	20.0	3.0			trace
4.0	17.0	Andesite (la, ld)	926		20.0	24.0	4.0			trace
17.0	70.8	Basalt (ld)	927		24.0	27.0	3.0			0.002
70.8	138.3	Lapilli Basalt (lh, lg)	928		27.0	31.0	4.0			trace
138.3	170.1	Basalt (ld)	929		31.0	35.0	4.0			trace
170.1	187.0	Andesite (la, ld)	930		65.0	69.0	4.0			trace
187.0	397.0	Basalt (ld)	931		69.0	72.0	3.0			trace
			932		97.0	100.0	3.0			trace
			933		100.0	103.0	3.0			trace
			934		114.0	117.0	3.0			trace
			935		133.0	136.0	3.0			trace
			936		148.0	150.0	2.0			trace
			937		159.8	163.8	3.0			trace
			938		163.8	165.9	2.1			trace
			939		165.9	167.0	1.1			trace
			940		167.0	170.1	3.1			trace
			941		170.1	174.1	3.0			trace
			942		193.0	196.0	3.0			trace
			943		237.0	240.0	3.0			trace
			944		276.0	279.0	3.0			trace
			945		285.0	288.0	3.0			trace
			946		339.0	342.0	3.0			trace
			947		350.0	352.0	2.0			trace
			948		368.4	371.9	3.5			0.016
			949		387.0	389.5	2.5			trace

18 ft
run of
5 samples

14.3 ft
run of
5 samples

more PJ

PROTEUS RESOURCES INC. DIAMOND DRILL RECORD

NAME OF PROPERTY JESSIE LAKE
 HOLE NO. J86-13 LENGTH 292 ft.
 LOCATION grid coordinates Line 54+0 West / 3+50 South
 LATITUDE _____ DEPARTURE _____
 ELEVATION not determined AZIMUTH 156° grid South DIP -45°
 STARTED Sept 23/86 FINISHED Sept 24/86

FOOTAGE	DIP	AZIMUTH	FOOTAGE	DIP	AZIMUTH
collar	-46°				
297'	-49°				

HOLE NO. J86-13 SHEET NO. SUMMARY
 REMARKS Claim K79 4547

LOGGED BY M Bemmergard

FOOTAGE		DESCRIPTION	SUMMARY OF SAMPLES				ASSAYS						
FROM	TO		NO.	% SULPHIDES	FOOTAGE			%	%	OZ/TON	OZ/TON		
					FROM	TO	TOTAL						
3.0	8.0	<u>SUMMARY OF LITHOLOGIES</u>	<u>43</u>										
3.0	8.0	Overburden.			11.0	14.0	3.0			trace			
8.0	176.5	Basalt (1d, 1a)			14.0	17.0	3.0			trace			
176.5	196.2	Chert (3, 1a)			17.0	19.0	2.0			trace			
196.2	231.4	Basalt (1d)			19.0	21.0	2.0			0.002			
231.4	259.3	Andesite (1a, 3)			21.0	25.5	4.5			trace			
259.3	297.0	Basalt (1d)			25.5	27.5	2.0			0.002			
	297.0	End of Hole			27.5	30.0	2.5			trace			
					30.0	33.0	3.0			trace			
					33.0	36.0	3.0			0.002			
					98.0	101.0	3.0			trace			
					101.0	102.5	1.5			trace			
					102.5	106.0	3.5			trace			
					147.0	150.0	3.0			trace			
					155.6	158.0	2.4			trace			
					170.2	172.2	2.0			trace			
					172.2	174.2	2.0			trace			
					174.2	176.5	2.3			trace			
					176.5	179.0	2.5			trace			
					185.0	189.0	4.0			trace			
					235.0	237.5	2.5			trace			
					237.5	240.0	2.5			trace			
					240.0	241.5	1.5			trace			
					241.5	245.0	3.5 3.5			trace			
					245.0	249.0	4.0			trace			
					249.0	252.0	3.0			trace			
					252.0	255.3	3.3			trace			
					255.3	259.3	4.0			0.002			
					271.5	274.5	3.0			trace			

25 ft
run of
9 consecutive
samples

9.2 ft
run of
4 samples

24.3 ft
run of
8 samples

DIAMOND DRILL RECORD

NAME OF PROPERTY JESSIE LAKE
 HOLE NO. J86-14 LENGTH 276 ft
 LOCATION grid coordinates Line 39400 West / 7+35 South
 LATITUDE _____ DEPARTURE _____
 ELEVATION 1134 ft ASL AZIMUTH 336° grid North DIP -45°
 STARTED Sept 26 / 86 FINISHED Sept 27 / 86

FOOTAGE	DIP	AZIMUTH	FOOTAGE	DIP	AZIMUTH
collar	-45°				
276'	-48°				

HOLE NO. J86-14 SHEET NO. SUMMARY 1/2
 REMARKS Claim K794546

LOGGED BY M. Beauvois

FOOTAGE		DESCRIPTION	SUMMARY OF 37 SAMPLES				ASSAYS				
FROM	TO		NO.	% SULPHIDES	FOOTAGE			%	%	OZ/TON	OZ/TON
					FROM	TO	TOTAL				
		<u>SUMMARY OF LITHOLOGIES</u>	47	029	19.0	27.0	3.0				
2.0	14.0	Overburden		030	33.8	36.8	3.0				
14.0	33.8	Tuff (2f, 1a)		031	43.7	46.7	3.0				
33.8	46.7	Basalt (1d)		032	46.7	48.2	1.5				
46.7	53.9	Andesite (1a)		033	50.9	53.9	3.0				
53.9	64.3	Basalt (1d, 1a)		034	53.9	56.9	3.0				
64.3	112.6	Tuff (2f, 1a)		035	62.8	65.8	3.0				
112.6	170.3	Basalt (1d, 1a)		036	97.0	100.0	3.0				
170.3	193.0	Alteration Zone		037	110.6	112.6	2.0				
193.0	206.0	Feldspar Porphyry (5b)		038	112.6	115.6	3.0				
206.0	215.5	Alteration Zone		039	115.6	118.6	3.0				
215.5	261.2	Basalt (1d, 1a)		040	118.6	121.6	3.0				
261.2	276.0	Tuff (2f, 1a)		041	121.6	124.6	3.0				
	276.0	End of Hole.		042	124.6	127.6	3.0				
				043	134.0	136.0	2.0				
				044	167.0	169.0	2.0				
				045	169.0	170.3	1.3				
				046	170.3	172.0	1.7				
				047	172.0	175.0	3.0				
				048	175.0	178.0	3.0				
				049	178.0	181.0	3.0				
				050	181.0	184.0	3.0				
				051	184.0	187.0	3.0				
				052	187.0	190.0	3.0				
				053	190.0	193.0	3.0				
				054	193.0	196.0	3.0				
				055	196.0	197.6	1.6				

7 ft. range of 6 samples

assays awaited.

PROTEUS RESOURCES INC
DIAMOND DRILL RECORD

NAME OF PROPERTY JESSIE LAKE
 HOLE NO. _____ LENGTH _____
 LOCATION _____
 ALTITUDE _____ DEPARTURE _____
 ELEVATION _____ AZIMUTH _____ DIP _____
 STARTED _____ FINISHED _____

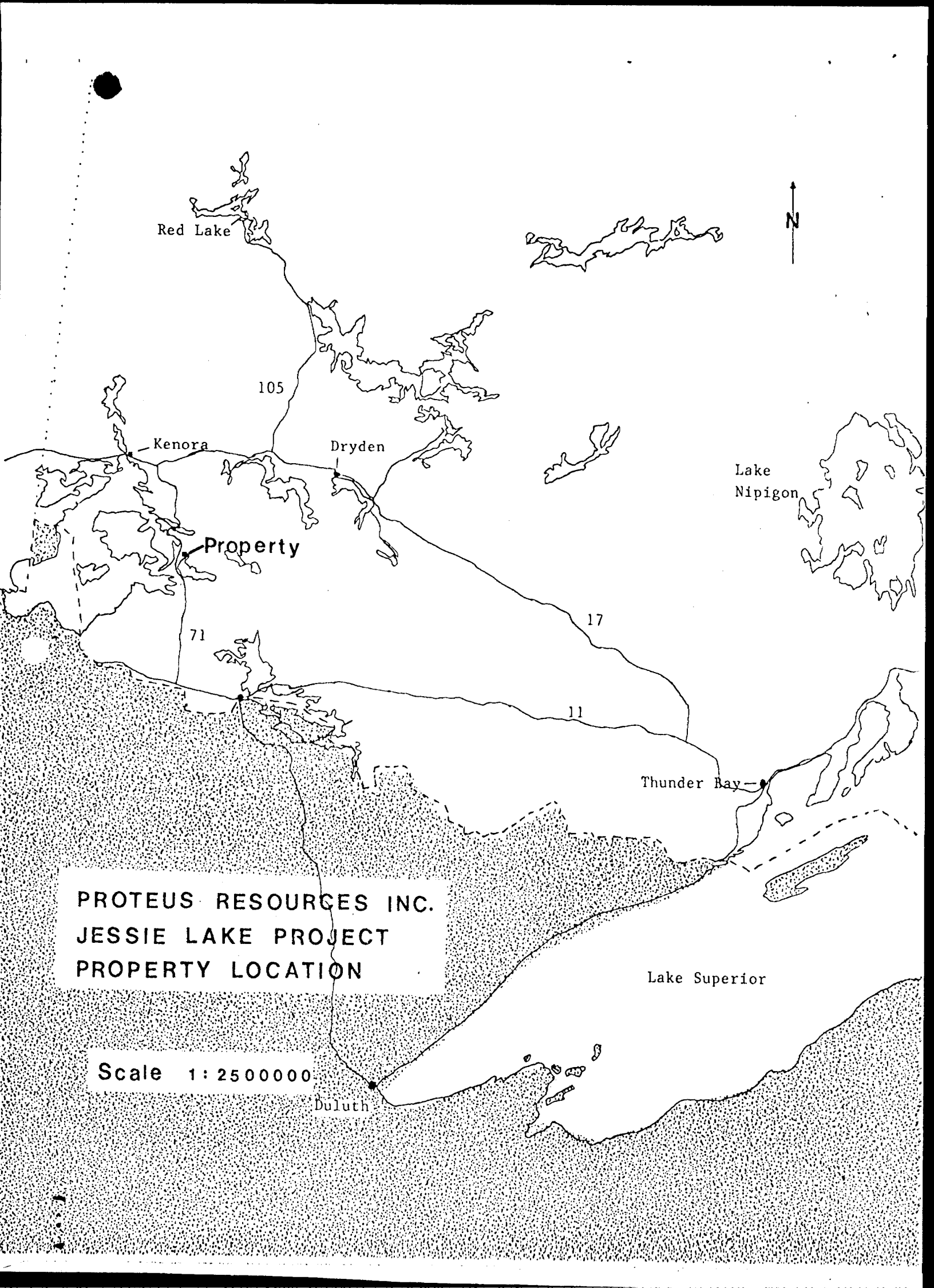
FOOTAGE	DIP	AZIMUTH	FOOTAGE	DIP	AZIMUTH

HOLE NO. J85-14 SHEET NO. SUMMAR
 REMARKS _____ #2/2

LOGGED BY MB

FOOTAGE		DESCRIPTION	SAMPLE				ASSAYS				
FROM	TO		NO.	% SULPHIDES	FOOTAGE			%	%	OZ/TON	OZ/TON
					FROM	TO	TOTAL				
			43	056	197.6	200.6	3.0				
				057	200.6	204.0	3.4				
				058	204.0	206.0	2.0				
				059	206.0	208.0	2.0				
				060	208.0	210.0	2.0				
				061	210.0	212.0	2.0				
				062	212.0	214.0	2.0				
				063	214.0	215.5	1.5				
				064	215.5	217.5	2.0				
			43	065	234.0	236.0	2.0				

awaited



Red Lake

105

Kenora

Dryden

Property

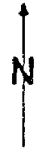
71

17

11

Thunder Bay

Lake Nipigon



PROTEUS RESOURCES INC.
JESSIE LAKE PROJECT
PROPERTY LOCATION

Scale 1:250000

Duluth

Lake Superior

10 DDH's J86-2 to J86-5,
J86-7 to J86-11
and J86-14



- Campsite
- I Corerack
- ◊ Diamond Drillhole
- - - Skid Road

M. Beauvregard
Sept / 86

PROTEUS RESOURCES INC.
JESSIE LAKE PROPERTY
DOGPAW LAKE G. 2613

Kakani Lake

Scale 1:50,000

Assess files



THE MINING ACT

900

To the Recorder of....KENORA..(G-2613)..Dog..Paw..Lake.....Mining Division

I, ..PROTEUS RESOURCES INC. name of Recorded Holder Miner's Licence

.....Suite..1101,..10..King..Street..East,..Toronto,..Ontario....M5C..1C3..... Post Office Address

do hereby report the performance of5500..... days of ...DIAMOND..DRILLING..... type of work

not before reported to be applied on the following contiguous claims

Table with 6 columns: Claim No., Days, Claim No., Days, Claim No., Days. Lists claim numbers 590352-590357 and 590523-590528 with 100 or 96 days.

All the work was performed on Mining Claim (s) 794544, 794545, 794546, 794547, 794508 SEE ADDITIONAL IS 16

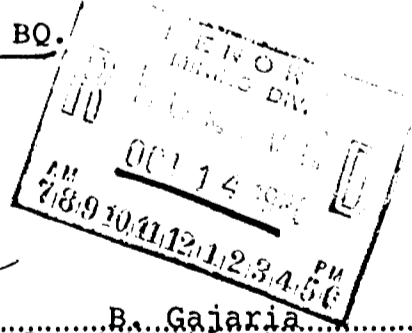
READ CAREFULLY: THE FOLLOWING INFORMATION IS REQUIRED BY THE MINING RECORDER.

- For Manual Work, Stripping or Opening up of Mines, Sinking Shafts or Other Actual Mining Operations - Names and addresses of the men who performed the work and the dates and hours of their employment. For Diamond and other Core Drilling - Footage, No. and angle of holes and diameter of core. Name and address of owner or operator of drill. Dates when drilling was done. Signed core log and sketch in duplicate. For Compressed Air or Other Power Driven or Mechanical Equipment Type of drill or equipment. Names and addresses of men engaged in operating equipment and the dates and hours of their employment. For Power Stripping - Type of equipment. Name and address of owner or operator. Amount expended. Dates on which work was done. Proof of actual cost must be submitted within 30 days of recording. With each of the above types of work sketches are required to show the location and extent of the work in relation to the nearest claim post. In the case of diamond or other core drilling the sketch must be submitted in duplicate. For Geological and Geophysical Survey - The names and addresses of men employed as well as dates. Type of instrument used in the case of geophysical survey. Reports and maps in duplicate must be filed with the Minister within 60 days of recording. For Land Survey - the name and address of Ontario Land surveyor.

The Required Information is as Follows: (Attach a list if this space is insufficient)

Diamond Drilling was carried out by N. Morissette Canada Inc. P.O. Box 789, Haileybury, Ontario Core size was BQ.

-see separate page for complete list of ddh.



DateOctober 8, 1986..... B. Gajaria Signature of Recorded Holder or Agent

The Mining Act Certificate Verifying Report of Work

I,Babu..Gajaria:....Proteus..Resources..Inc..... Suite 1101, 10 King Street East Toronto, Ontario M5C 1C3 (Post Office Address)

hereby certify:

- 1. That I have a personal and intimate knowledge of the facts set forth in the report of work annexed hereto, having performed the work or witnessed same during and/or after its completion. 2. That the annexed report is true.

Dated.....October 8th.....19 86..... Signature

Handwritten signature at the bottom.

590352

THE PENALTY FOR MAKING A FALSE STATEMENT IN THIS REPORT AND/OR CERTIFICATE IS \$500. OR SIX MONTHS IMPRISONMENT OR BOTH

ADDITIONAL CLAIMS

CLAIM NO.

DAYS

657651.	96
657652 -	96 .
657653.	96 .
657654 .	96 .
657657 .	96 .
657660 -	96 .
657661 -	96 .
657662 `	96 .
657663 -	96 .
657664 -	96 .
657665 -	96 .
727023.	96 .
727024 .	96 .
727025 -	96 .
727026 `	96 .
727027 .	96 .
727028 -	96 .
727029 .	96 .
727030 -	96 .
727031 .	96 .
727091 -	96 .
794504 -	96 .
794505 -	96 .
794506 -	96 .
794507 -	96 .
781538 ✓	96 .
794543 .	96 .
794544 -	96 .
794545 -	96 .
795546 .	96 .

21

20

CLAIM NO.

DAYS

794547 .	96
794548 .	96 .
794549 .	96 .
794550 .	96 .
794551 .	96 .
794552 .	96
745564	96 .
⁴⁵ 79 A565	96 .
⁴⁵ 79 A566	96