

DIAMOND DRILLIN



52F05SW0110 35 DOGPAW LAKE

010

AREA: DOGPAW LAKE

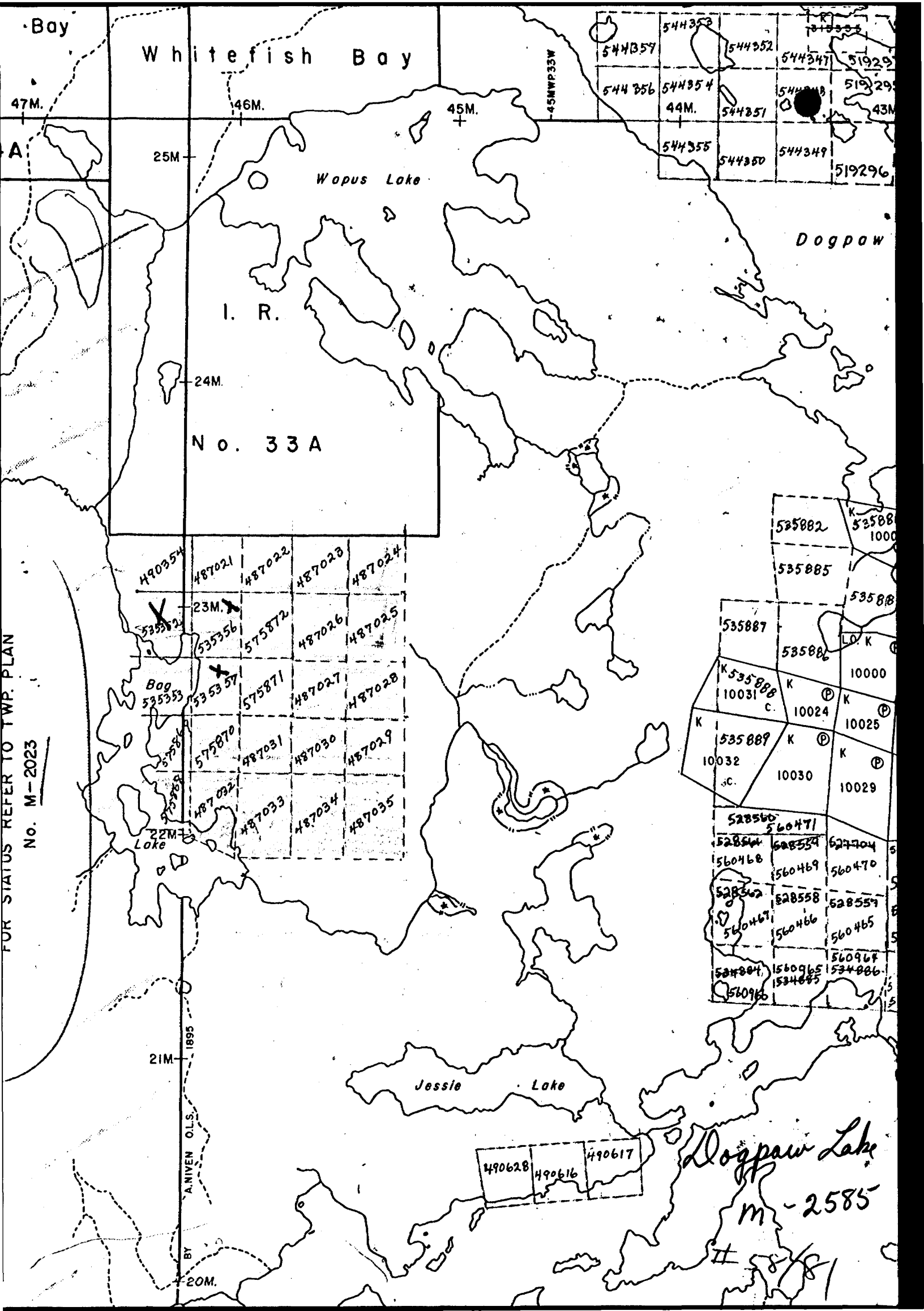
REPORT No.: 35

WORK PERFORMED BY: GULF MINERALS LTD.

<u>CLAIM No.</u>	<u>HOLE No.</u>	<u>FOOTAGE</u>	<u>DATE</u>	<u>NOTE</u>
K 535352	1	150.6m	Oct/80	(1)
	9	120.3m	Nov/80	(1)
K 535356	2	153.6m	Oct/80	(1)
	3	153.6m	Oct/80	(1)
	4	153.6m	Nov/80	(1)
	5	59.7m	Nov/80	(1)
	6	90.0m	Nov/80	(1)
K 535357	7	87.0m	Nov/80	(1)

NOTES:

(1) #58 -81



Bay

# Whitefish Bay

47M.

46M.

45M.

25M.

24M.

No. 33 A

I. R.

Wopus Lake

Dogpaw

490354	487021	487022	487023	487024
535352	535356	575872	487026	487025
535353	535357	575871	487027	487028
575870	487031	487030	487029	
487032	487033	487034	487035	

525882	525888	1000
535885	535886	10000
535887	535888	10003
535889	10024	10025
10032	10030	10029
528560	560471	627704
528564	560468	560469
528567	560467	560466
528562	528558	528559
560465	560466	560465
560467	560466	560465
560467	560466	560465
560467	560466	560465

490628	490616	490617
--------	--------	--------

Logpaw Lake  
m - 2585

BY ANIVEN O.L.S. 1895

20M.

FOR STATUS REFER TO TWP. PLAN No. M-2023

DIAMOND DRILL HOLE DATABAG LAKE PROJECT

Contractor: N. Morissette Diamond Drilling  
 P.O. Box  
 Haileybury, Ontario

Drilling Dates: October 19 to November 16, 1980

Core Size: BQ (1 7/16")

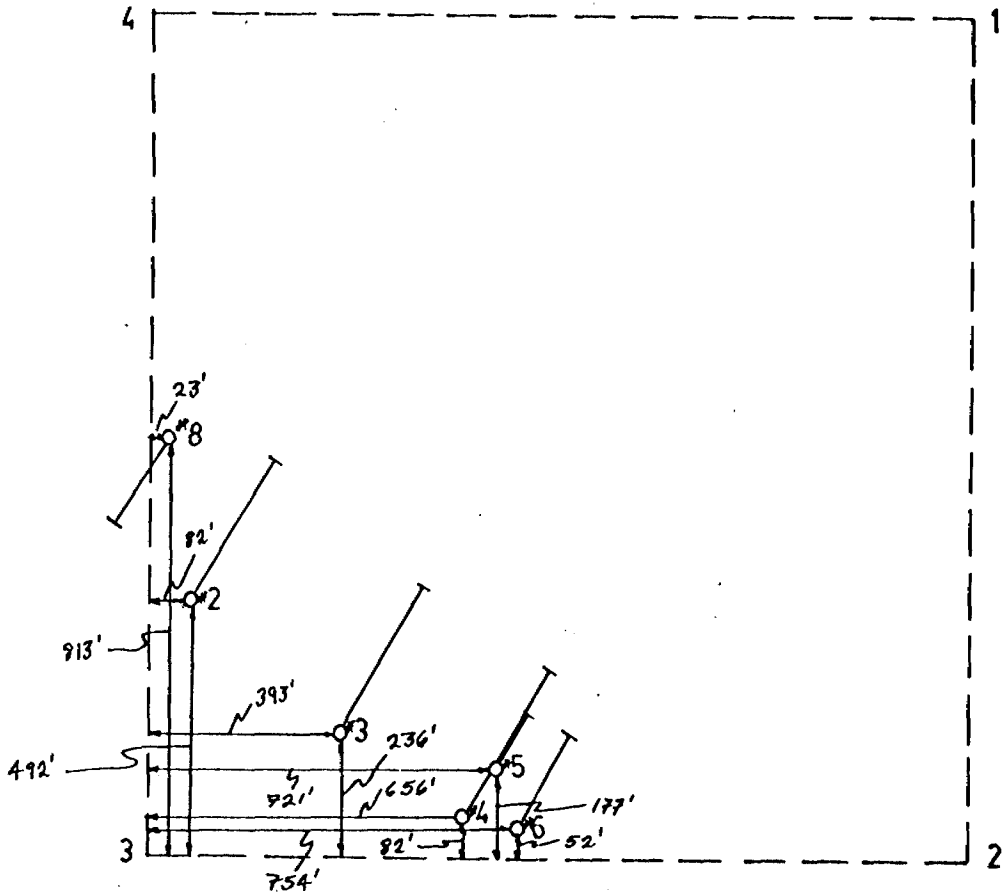
<u>Hole No.</u>	<u>Claim No.</u>	<u>Date</u>	<u>Depth</u>	<u>Orientation</u>
1	K 535352	Oct. 20-23/80	150.6 m	collar: 040°/45° (azimuth/dip)
2	K 535356	Oct. 25-27/80	153.6 m	collar: 040°/45°
3	K 535356	Oct. 29,30/80	153.6 m	collar: 040°/45°
4	K 535356	Nov. 2-4/80	153.6 m	collar: 040°/45°
5	K 535356	Nov. 5,6/80	59.7 m	collar: 040°/45° (azimuth/dip)
6	K 535356	Nov. 7,8/80	90 m	collar: 040°/45°
7	K 535357	Nov. 9-11/80	87 m	collar: 040°/45°
8	K 535356	Nov. 13/80	90 m	collar: 220°/45°
9	K 535352	Nov. 14,15/80	120.3 m	collar: 220°/45°

1058.4



REPORT OF ASSESSMENT WORK

D.D.H. LOCATION SKETCH



Mining Claim No: K 535356

Hole No. or Name: 2, 3, 4, 5, 6, 8

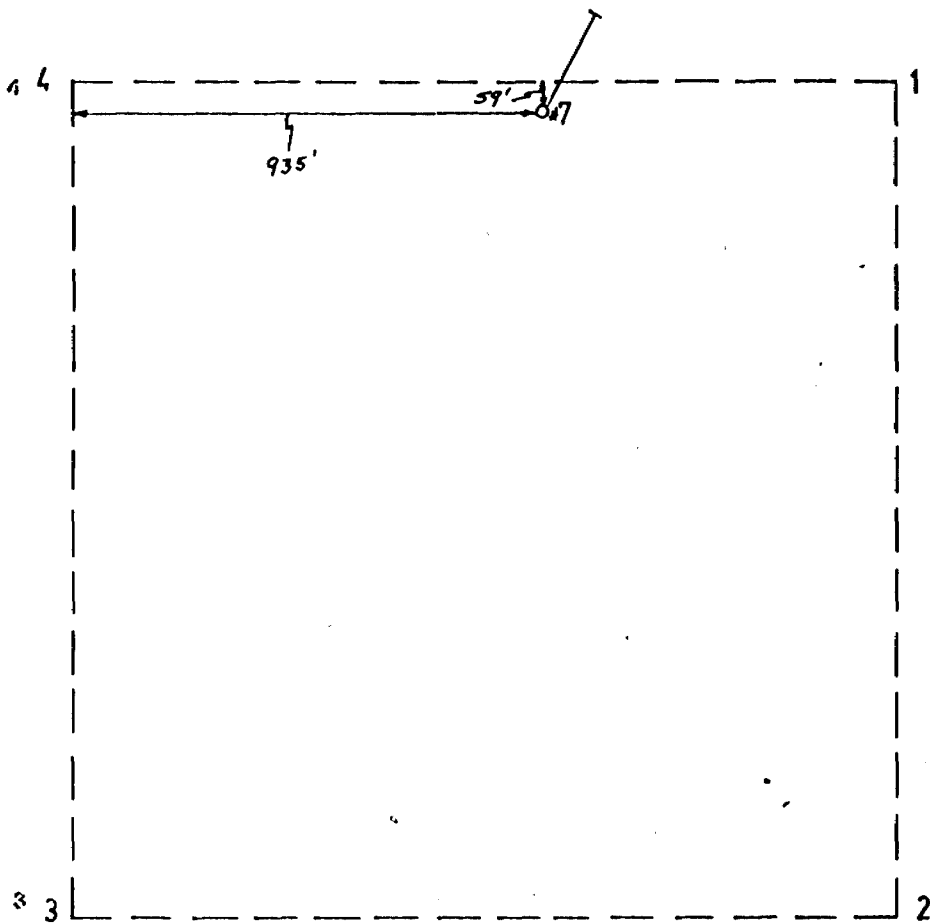
Province: Ontario

Location: Bag Lake



REPORT OF ASSESSMENT WORK

D.D.II. LOCATION SKETCH



Mining Claim No. K535357

Hole No. or Name: 7

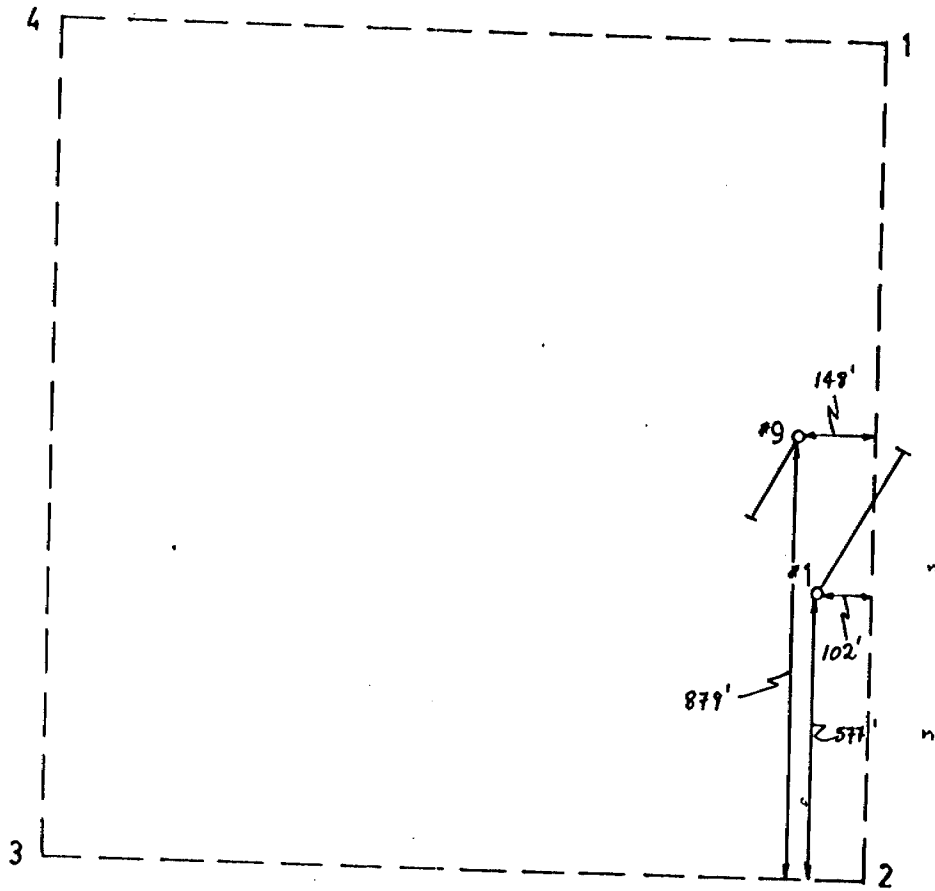
Province: Ontario

Location: Bag Lake



REPORT OF ASSESSMENT WORK

D.D.H. LOCATION SKETCH



Mining Claim No. K535352

Hole No. or Name: 1,9

Province: Ontario

Location: Bag Lake



PROJECT Area 49 Diamond Drilling HOLE No. 1  
 LOCATION OE 45 M S CLAIM No. 535352 CORE SIZE BQ TESTS Acid: 45° CRO<sup>M</sup> 38°  
 LATITUDE \_\_\_\_\_ AZIMUTH N40°E (40°) Grid N STARTED 20 Oct. 1980 @ 150 M  
 DEPARTURE \_\_\_\_\_ DIP Collar Minus 45° COMPLETED 23 Oct. 1980  
 ELEVATION Lake Level + 1 M DEPTH 150.6 Metres LOGGED BY R.B. Allen

FROM	TO	DESCRIPTION	SAMPLE	FROM	TO	INT.
M	M	All measurements shown in metres				
0	2.1	Casing (pulled)				
2.1	18.8	Andesite, basic, regional schistosity and jointing. Sparse quartz stringers. Contact 18.8 sheared 70° c.a. 4 cm.				
18.8	25.8	Siliceous felsite, locally quartz porphyry, gradational. Fresh, shows jointing only. Boundaries vague.				
25.8	30.8	Andesite, silicified, very fine grain. Traces of healed schistosity. Minor slips 70° c.a. especially near contact.				
30.8	35.8	Felsite as 18.8-25.8. Fresh, jointed, indistinct contacts.				
35.8	50.8	Felsite, porphyritic. Dull brown colour, phenocrysts small. Joints only, solid, hard, fresh - appearing. Local traces pyrite, no sharp boundaries.				
50.8	75.5	Basic dyke, basaltic, or contact-altered volcanic. Aphanitic, hard, uniform. Green to black. Traces of				







## Gulf Minerals Canada Limited

PAGE 1 OF 2

PROJECT Area 49 Diamond Drilling HOLE No. 2

LOCATION Bags Lake Grid CLAIM No. 535356 CORE SIZE BQ TESTS Acid-Tube

LATITUDE 0+45 M.S. AZIMUTH N40°E: Grid N STARTED 25 Oct. 1980 At 100 ft. 45° 30 M

DEPARTURE 60+00E DIP Collar Minus 45° COMPLETED 27 Oct. 1980 At 507 ft. 40' 153 M

ELEVATION Lake Level + 10.6 M DEPTH 153.6 M (507 ft.) LOGGED BY R.B. Allen

BL at 60E is 7.2 M above Lake

FROM	TO	DESCRIPTION	SAMPLE	FROM	TO	INT.
0	1.8	Casing (pulled)				
1.8	5.2	Siliceous felsite, small phenocrysts feldspar. Core broken, rusty on joints (surface weather) contact intrusive 30° c.a.				
5.2	40.9	Andesite (meta), regular regional schistosity quartz stringers 45° c.a. (along core 10-12) core broken angular 7-8, 30-31, jointing. Minor shear 36 white quartz 50% 38-39. Abrupt contact 60° c.a., healed strip.				
40.9	45.5	Felsite with andesite sections irreg. siliceous, unbroken vague banding 45° c.a. vague contacts.				
45.5	80.6	Basic dyke or recrystallized volcanics, aphanitic, spotted locally (segregations?) green-black, uniform, few breaks jointed local epidote threads or quartz stringers abrupt unbroken boundary.				
80.6	97.6	Felsite, siliceous, green, vaguely banded stringers quartz 70 c.a. jointed. Minor slips, quartz-tourmaline 2 cm 97 local traces pyrite.				









FROM	TO	DESCRIPTION	SAMPLE	FROM	TO	INT.
		59.4-77.5 (cont'd)				
77.5	117.3	Metagabbro: uniform, solid, black with green rosette-like porphyroblasts, chlorite-hornblende (?). Local sections resemble metandesite.				
117.3	124.2	Metagabbro as above, no metandesite.				
124.2	133.0	Metagabbro, cherty sections 40% of core, resemble rhyolite. Core unbroken.				
133.0	142.4	Metandesite, with cherty sections as above. Flow breccia? Core solid, no breaks.				
142.4	153.6	Quartz Porphyry: Groundmass cherty with local healed shears 5-10 cm wide. Sometimes sericitic. Core solid, unbroken. Identification uncertain. No mineral noted.				
153.6	M	End of Hole (507 ft.)				

PROJECT Area 49 Diamond Drilling HOLE No. 5

LOCATION \_\_\_\_\_ CLAIM No. 535356 CORE SIZE BQ TESTS Acid Tube  
 LATITUDE 0+15 S AZIMUTH N40E = Grid N STARTED 5 Nov. 1980 At 59.7 M 44°  
 DEPARTURE 2+70E DIP Collar Minus 45° COMPLETED 6 Nov. 1980  
 ELEVATION Lake Level + 10 M DEPTH 59.7 metres (197 ft.) LOGGED BY R.B. Allen

On section with No. 4 and above passes below pit on B.L. 0.5 m above collar

FROM	TO	DESCRIPTION	SAMPLE	FROM	TO	INT.
0	1.2	Casing (pulled)				
1.2	17.9	Metandesite, few patches metagabbro. Joints and rusty slips at 5.5 and 7.3. Irregular wispy stringers quartz locally 30% of core.				
17.9	27.3	Felsite, cherty (fine, siliceous) possibly, meta-rhyolite, probably granitic. Local quartz seams, brecciated with pyrite: Irregular distribution. Short sections metandesite (20% of core) with minor pyrite, crystalline in part. Sampled entirely in metre lengths 17.5-27.5 passes under BL at 22 m.				
27.3	40.9	Metandesite, locally dioritic, uniform appearance, solid core, joints only.				
40.9	43.0	Felsite, cherty, brecciated, minor pyrite.				





PROJECT Area 49 Diamond Drilling HOLE No. 6LOCATION \_\_\_\_\_ CLAIM \_\_\_\_\_ CORE SIZE BQ TESTS Acid TubeLATITUDE 0+30 S AZIMUTH N40E = Grid N STARTED 7 Nov. 1980 At 90 M 43°DEPARTURE 3+00E DIP Collar Minus 45° COMPLETED 8 Nov. 1980ELEVATION Lake Elev. + 14.2 M DEPTH 90° Metres (297') LOGGED BY R.B. Allen

BL at 3+00 E 14.9 M Ridge Crest on BL 3+30 E at Elev. 19 M above Lake Level, Ridge Base 2+40 E Elev. 7.5 M

FROM	TO	DESCRIPTION Measurements in Metres	SAMPLE	FROM	TO	INT.
0	1.2	Casing (pulled)				
1.2	54.8	Metandesite, fine gr. remnant schistosity core uniform, solid, joints only. 10% wispy quartz stringers throughout, irreg. quartz veinlet 6 M widt 10 cm. Slips 24-25, not mineralized. Partly silicified 48-54.8, grades to following.				
54.8	59.7	Felsite, siliceous, locally quartz porphyry, with 20% included andesite. Local brecciation. Minor pyrite. Sampled throughout.				
59.7	64.7	Metandesite as 1.2-54.8				
64.7	65.3	Siliceous felsite as 54.8-59.7 sampled				
65.8	90°	Metandesite as 1.2-54.8. Core unbroken, local traces euhedral pyrite.				
90.0		End of Hole (297 ft.) recovery >95%				





