



52F05SW0139 17 DOGPAW LAKE

010

### Diamond Drilling

Area of Dogpaw Lake

Report No 17

Work performed by: Selco Expl.

Claim No	Hole No	Footage	Date	Note
K 39581	K 9 A	149	Oct-Nov/67	
	K 10	177.6	Oct/67	
K 39572	K 15	492	March/68	
	K 16	363	April/68	
K 39576	K 20	282	July/68	
K 39580	K 22	221	Aug/68	
		1684.6'		

Notes:

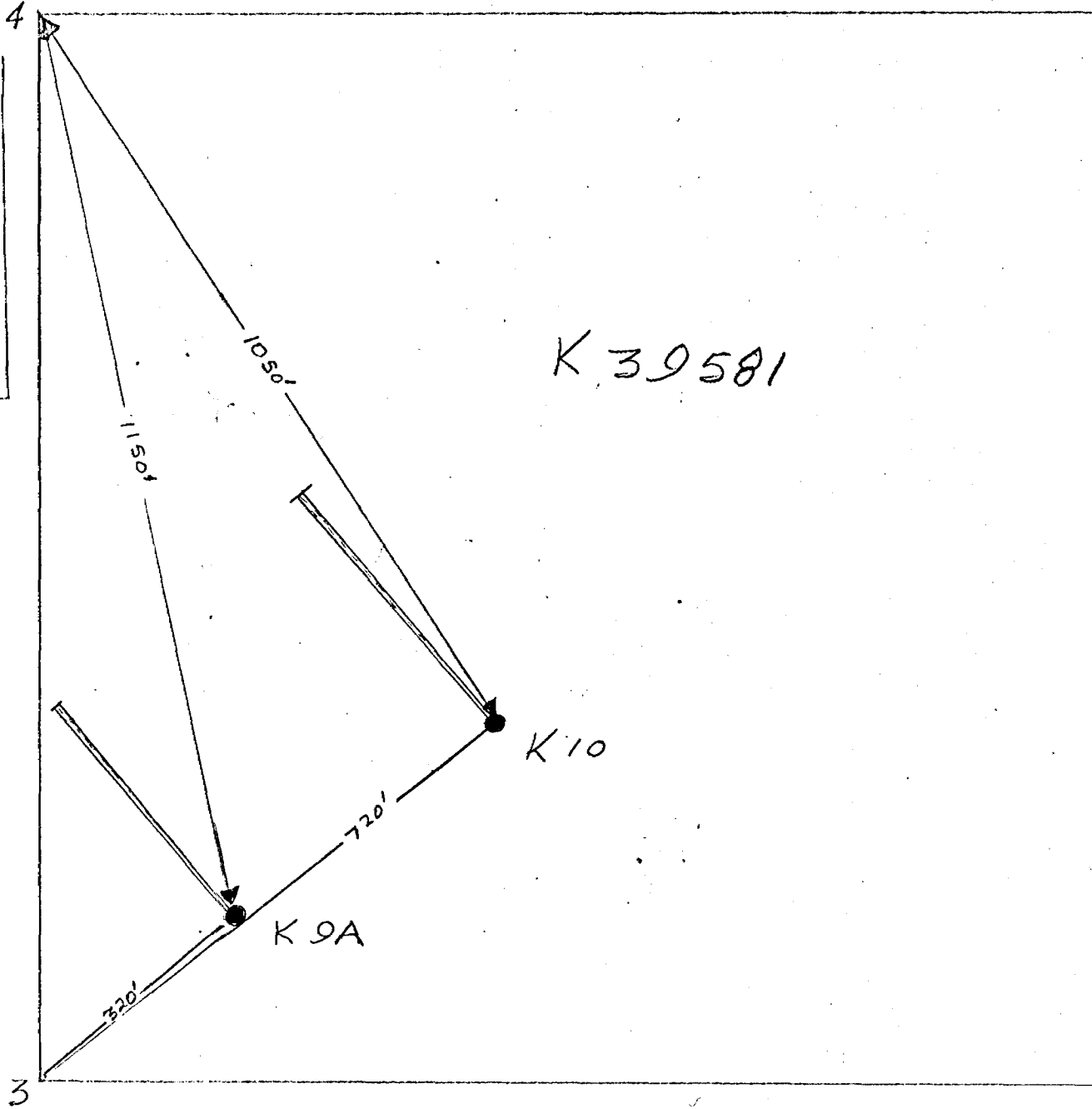
KENORA

FILED:

REC'D. JAN 29 1968

RECEIPT No.  
MINING DIVISION

11



SCALE  
1" = 200'

KENORA

FILED:

REC'D. JAN 29 1968

RECEIPT No.  
MINING DIVISION

204  
25/1/68

DIAMOND DRILL RECORD

PROPERTY KAKAGI LAKE - ANOMALY 46C

HO No. K9A  
 SHEET NO 1  
 LOCATION 0 + 00 0 + 50S  
 55'SE from conductor

BEARING 320°  
 DIP COLLAR -50°

K39581  
 ELEVATION *Longpaw L (11-2585)*  
 TOTAL DEPTH 149'  
 CORE SIZE EXT

STARTED Oct. 30, 1967 COMPLETED Nov. 2, 1967

FROM	TO	DESCRIPTION	SAMPLE NO.	FROM	TO	CORE LENGTH	CORE RECOVERED	ASSAYS		REMARKS
								Cu. %	Zn %	
	2	CASING								
2	97	DACITE: salic very fine grained rock. Altered feldspars render the rock softer than rhyolite. Occasional band of rounded mafic phenocrysts and cherty phenocrysts. Occasional streak of pyrite on fractures. Core broken at 7', 12'6" - 15'6", 20', 23'. At 22' - streaks of sulphides include chalcopryrite. 28 - 29 larger specks and blebs of pyrrhotite. Rock contains acicular crystals of amphibole. 30 - 33 : biotite up to 30% with minute streaks and blebs of chalcopryrite and sphalerite. At 45' indistinct banding 40° 41' - 45' cherty phenocrysts. 41 - 45 pyrrhotite 15%. 44 - 45 numerous mafic phenocrysts. 44'6" specks of chalcopryrite or fracture. 59.6 - 62 basic inclusion ? 61'6" - a 1 1/2" irregular band of chalcopryrite. 51 - 67 occasional black bands in milky rhyolite. Bands 35° - 40°. 67 - 68 cherty phenocrysts 69 - 71 mafic phenocrysts 72 - 73 " " 71', 72'6" pyrrhotite and pyrite in specks and veinlet - some chalcopryrite. 79, 80 mafic phenocrysts.	2901	20	23			.03	Tr.	
			2902	30	33			.09	.12	
			2903	42	45			.02	.03	
			2904	60	63			1.25	Tr.	At 61.6 a 1 1/2" vein of solid chalco.
			2905	63	66			.04	None	
			2906	81	84			.07	None	

FILED: KENORA  
 REC'D. JAN 29 1968  
 RECEIPT No. MINING DIVISION

SELCO EXPLORATION COMPANY LIMITED  
DIAMOND DRILL RECORD

HO No. \_\_\_\_\_  
SHEET NO 2  
LOCATION \_\_\_\_\_

PROPERTY \_\_\_\_\_

BEARING \_\_\_\_\_  
DIP COLLAR \_\_\_\_\_

ELEVATION \_\_\_\_\_  
TOTAL DEPTH \_\_\_\_\_  
CORE SIZE \_\_\_\_\_

STARTED \_\_\_\_\_ COMPLETED \_\_\_\_\_

FROM	TO	DESCRIPTION	SAMPLE NO.	FROM	TO	CORE LENGTH	CORE RECOVERED	ASSAYS			REMARKS
		82 - 92 white siliceous bands. 81 - 82 a streak of pyrite along core. 83 - 88 dacite assumes distinct purple colour. 83 - a band with pyrrhotite and chalcopyrite specks. 86 - 89 pyrrhotite 5% 90 - 92 pyrrhotite 5% 94 - 97 dacite mottled due to mafic phenocrysts.									
97	103	DACITE: medium grained purple rock with numerous, minute pyrrhotite specks. Purplish colour could be due to very finely disseminated sphalerite. 100 - 102 Blebs of pyrrhotite up to 15 mm	2907	97	100			.04	None		
			2908	105	108			.04	None		
	131.6	DACITE: fine grained salic rock with porphyritic bands both cherty and dark mafic 104 - 105 purple, fine grained band. 108 - 109 black phenocrysts finer, some patches of pyrite. 112 pyrrhotite specks; pyrite slivers on fractures. 115 few larger pyrrhotite specks (10 mm) 120'6" a 1/4" veinlet of pyrrhotite and pyrite with specks of chalcopyrite and sphalerite lining. 122 @ 128 pyrrhotite blebs larger (15 mm) but less frequent. 130 - 131 coarser patches of brown mafic mineral.	2909	120	123			.06	None		
			2910	130	133			.03	Tr.		

FILED: KENORA  
 REC'D. JAN 29 1968  
 RECEIPT No. MINING DIVISION

DRILLED BY \_\_\_\_\_

SIGNED \_\_\_\_\_

SELCO EXPLORATION COMPANY LIMITED  
**DIAMOND DRILL RECORD**

HOLE No.

PROPERTY \_\_\_\_\_

ELEVATION

SHEET NO 3

BEARING

TOTAL DEPTH

LOCATION

DIP COLLAR

CORE SIZE

STARTED

COMPLETED

FROM	TO	DESCRIPTION	SAMPLE NO.	FROM	TO	CORE LENGTH	CORE RECOVERED	ASSAYS				REMARKS
106	135	DACITE: medium grained, purple.										
135	136	CHERTY PHENOCRYSTS:										
136	149	DACITE: fine grained, salic, purplish rock with pyrite and pyrrhotite specks. Some chalcopyrite. 141 - specks of chalcopyrite more numerous. Occasional band of cherty phenocrysts.  END OF HOLE.	2911	145	148			.03	None			

KENORA  
 FILED:  
 REC'D. JAN 29 1968  
 RECEIPT No.  
 MINING DIVISION

# DIAMOND DRILL RECORD

HOLE NO. K 10  
 SHEET NO 1  
 LOCATION 4 + 00E 0 + 12N  
 68' SE of conductor

PROPERTY KAKAGI LAKE - ANOMALY 46C

BEARING 320°  
 DIP COLLAR -60°

ELEVATION  
 TOTAL DEPTH 177'6"  
 CORE SIZE EXT

STARTED October 24, 1967 COMPLETED October 29, 1967

FROM	TO	DESCRIPTION	SAMPLE NO.	FROM	TO	CORE LENGTH	CORE RECOVERED	ASSAYS		REMARKS
								Cu.%	Zn.%	
1	64	CASING.								
		DACITE - rhyolite. Very fine grained, almost cherty rock with disseminated pyrite in minute specks. Some larger, sphalerite specks. From 8' sulphides 5%. Fractures 20° - 40°, most with Fe O.	2912	9	12			.01	.08	
		13' a few 1/8" lenses of pyrite with sphalerite borders. Some 1/2" blebs also of similar composition.	2913	12	15			.02	.12	
		15' a carbonate veinlet. 22 - 30'6": Several 1/4" pyrite, pyrrhotite stringers.								
		22' some indistinct banding 45° to 50° to core.	2914	27	30			.03	.06	
		30'6" an 1/8" sphalerite veinlet at 30°.	2915	30	33			.03	.16	
		33'6" sphalerite veinlet on fracture.								
		33'6" - 36' dacite coarser with mafic phenocrysts. Sulphides more abundant.	2925	34	37			.03	.24	
		36 - 46 several irregular patches of sulphides: pyrite, pyrrhotite and some sphalerite.	2916	37	42			.04	1.18	
		43'6" - 53' Dacite; mottled porphyritic; bands of white fine grained salic rock with black, rounded phenocrysts; some chlorite on fractures.	2917	42	45			.02	.28	
		51'6" - an irregular, dendritic veinlet of pyrite and sphalerite in mottled bands; some chalcopryrite.	2918	51	54			.07	.16	
		56' - two veinlets (1/8" - 1/4") of pyrite, pyrrhotite and sphalerite with specks of chalcopryrite.	2919	54	57			.05	.10	

KENORA  
 FILED  
 REC'D. JAN 29 1968  
 RECEIPT NO.  
 MINING DIVISION

1/8" sphalerite veinlets - patches of py. po. and sphalerite.

DRILLED BY W. Kirkpatrick

SIGNED V. Wierzbicki

SELCO EXPLORATION COMPANY LIMITED  
DIAMOND DRILL RECORD

HOLE NO. \_\_\_\_\_  
SHEET NO 2  
LOCATION \_\_\_\_\_

PROPERTY \_\_\_\_\_

BEARING \_\_\_\_\_  
DIP COLLAR \_\_\_\_\_

ELEVATION \_\_\_\_\_  
TOTAL DEPTH \_\_\_\_\_  
CORE SIZE \_\_\_\_\_

STARTED \_\_\_\_\_

COMPLETED \_\_\_\_\_

FROM	TO	DESCRIPTION	SAMPLE NO.	FROM	TO	CORE LENGTH	CORE RECOVERED	ASSAYS				REMARKS
64	172.6	60'4" veinlet of pyrite and pyrrhotite with specks of sphalerite and chalcopyrite.										<div style="border: 1px solid black; padding: 5px; width: fit-content; margin: auto;"> <p style="margin: 0;">KENORA</p> <p style="margin: 0;">REC'D. JAN 29 1968</p> <p style="margin: 0;">RECEIPT No. _____</p> <p style="margin: 0;">MINING DIVISION</p> </div>
		64' a 1/4" veinlet of pyrite in a 4" band of 60% pyrrhotite.										
		56' - 64' specks of pyrite and pyrrhotite make up 5 - 10% of the rock.	2920	60	63			.04	.03			
		DACITE: rock as above but porphyritic bands are thicker and more numerous. Sulphides in the body of rock decreasing to 73'6" then start again.	2921	63	66			.06	.03			
		73'6" - 75'6" - a 1/2" vein of pyrite and some sphalerite at small angle to the core.	2922	73	76			.01	.20			
		78' - a 1/2" pyrite, pyrrhotite veinlet.										
		80 - 81'6" few 1/16". contorted pyrrhotite veinlet.										
		83' - an irregular feldspar veinlet followed by contorted chlorite streaks, often with pyrrhotite.										
		99' another feldspar veinlet with chlorite; possibly some graphite.										
		100 - 101 - specks of pyrrhotite abundant.										
		105 - 108'6" occasional speck of chalcopyrite.										
		108'6" - 111 bands of greenish altered material with pyrrhotite along banding.										
		116' - 122' pyrrhotite streaks and blebs 15%.	2923	117	120			.02	None			
		122 - 123 a basic inclusion - some quartz streaks.										
		123 - 126 streaks and blebs of pyrrhotite 30%.	2924	123	126			.03	None			

DRILLED BY \_\_\_\_\_

SIGNED \_\_\_\_\_

SELCO EXPLORATION COMPANY LIMITED  
DIAMOND DRILL RECORD

HOLE NO. \_\_\_\_\_  
SHEET NO 3  
LOCATION \_\_\_\_\_

PROPERTY \_\_\_\_\_

BEARING \_\_\_\_\_  
DIP COLLAR \_\_\_\_\_

ELEVATION \_\_\_\_\_  
TOTAL DEPTH \_\_\_\_\_  
CORE SIZE \_\_\_\_\_

STARTED \_\_\_\_\_

COMPLETED \_\_\_\_\_

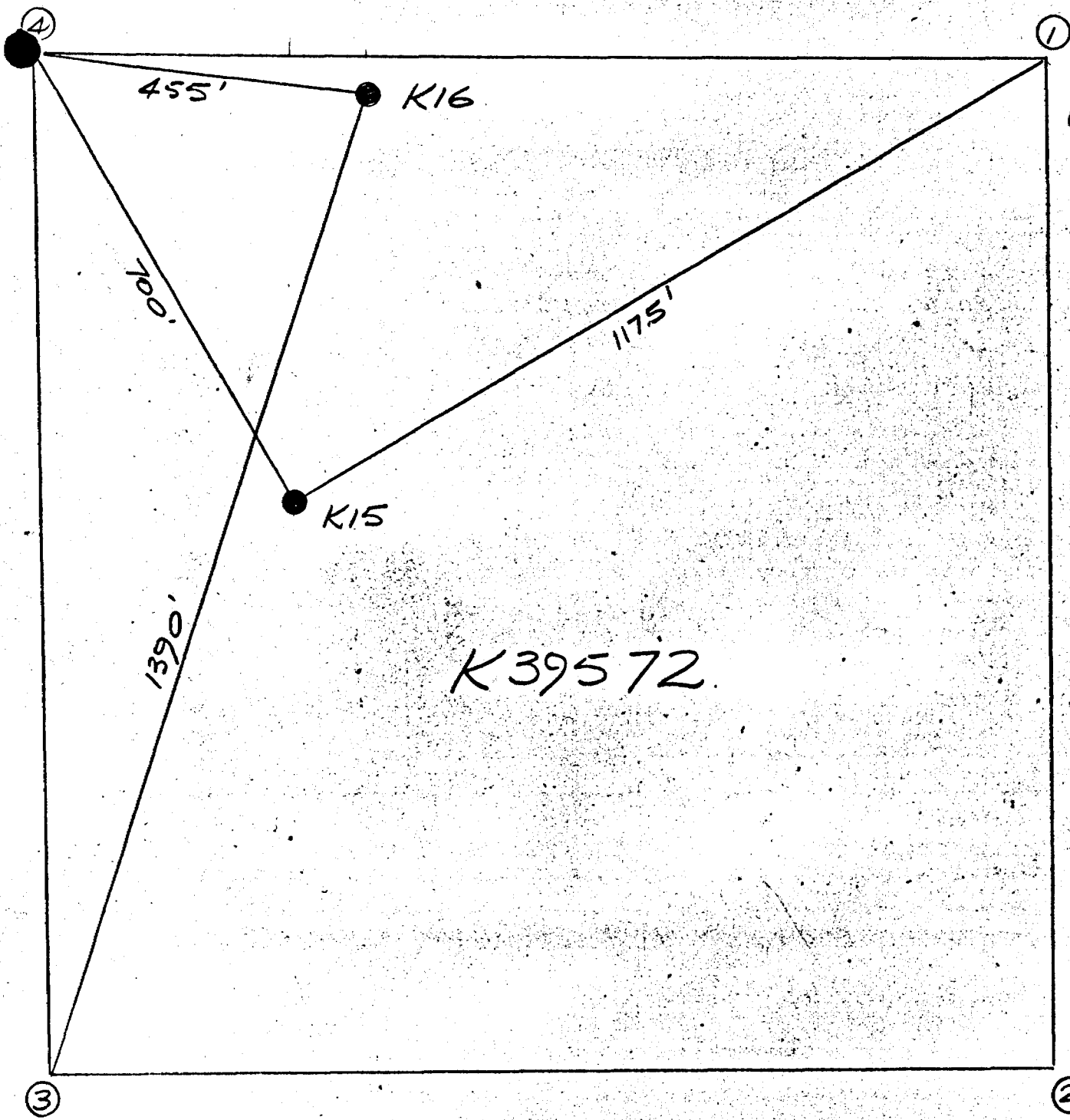
FROM	TO	DESCRIPTION	SAMPLE NO.	FROM	TO	CORE LENGTH	CORE RECOVERED	ASSAYS				REMARKS
		128 - 132 sulphides in veinlets and streaks 10 - 15%.	2928	129	132			.01	None			<div style="border: 1px solid black; padding: 5px; width: fit-content; margin: auto;"> <p style="margin: 0;">KENORA</p> <p style="margin: 0;">FILED: REC'D. JAN 29 1968</p> <p style="margin: 0;">RECEIPT NO. MINING DIVISION</p> </div>
		133 - specks of chalcopyrite.	2926	132	135			.03	None			
		135 - 136 a few quartz-feldspar veinlets and streaks and irregular patches of pyrrhotite containing chalcopyrite.	2927	135	138			.01	None			
		150 - 155 blebs of sulphides; pyrrhotite outside and pyrite centres.	2929	160	163			.04	None			
		160 - 161 pyrrhotite veinlets containing some chalcopyrite.										
		168 - a 1/2" quartz vein lined with pyrite. To 172 sulphides less abundant - a few irregular, isolated blebs.	2930	172	175			.01	Tr.			
172'6"	174'6"	Brecciated dacite. Fragments of dacite separated by dark streaks. Sulphides abundant - 20%, pyrite predominanting.										
176'6"	177'6"	DACITE: massive salic rock with occasional crystal of pyrite to 176'. A few quartz-carbonate veinlets at 60° to core.										
		END OF HOLE.										

DRILLED BY \_\_\_\_\_

SIGNED \_\_\_\_\_



K39572



M-  
(2585 - Dogpaw L)



K39572

KEMORA  
MINING DIV.  
**RECEIVED**  
APR 25 1968  
AM 5:00 PM 4:56

SCALE: 1" = 200'

# DIAMOND DRILL RECORD

HO No. K15

PROPERTY KAKAGI LAKE VALLEY GROUP 45C

ELEVATION

SHEET NO 1

BEARING South

TOTAL DEPTH 492'

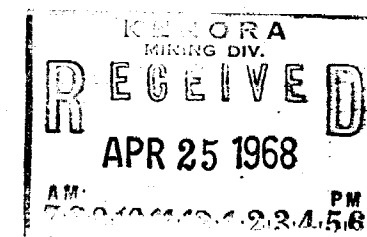
LOCATION 7+40W; 30+00N

DIP COLLAR -45°  
at 480' -48°

CORE SIZE 15/16"

STARTED March 25, 1968 COMPLETED March 31, 1968

FROM	TO	DESCRIPTION	SAMPLE NO.	FROM	TO	CORE LENGTH	CORE RECOVERED	ASSAYS				REMARKS
0	6'	CASING										
6'	12'	GREY SHALE Grey, fine grained, fairly hard, well banded (40°-45°) sediments Pyrite veinlets on fractures and along banding. Specks of pyrrhotite in darker bands.										
12'	19'8"	ACID TUFF and SEDIMENTS Grey, medium grained, hard, tuffaceous rock, composed of feldspars and quartz with pyrite and pyrrhotite occurring in the interstices. 14'-15' Broken core 15' - Quartz-carbonate-feldspar veinlet 15'-15'6" - Darker, spotted rock with less sulphides 17' - Pyrite blebs 18' - A band of rhyolite followed by coarser tuff.										
19'8"	24'	SEDIMENTS Grey, fine grained, hard, banded sediments. Bands of dark shale and coarser, paler sediments. Black shales at top and at the bottom; 23'-24' with irregular veinlets and specks of pyrite - At 20' shales graphitic possibly with sphalerite specks.										
24'	27'	COARSE ACID TUFF Coarse, grey, hard rock with fragments of quartz and feldspars. 5% sulphides in the interstices - occasional band of dark sediments.										



SELCO EXPLORATION COMPANY LIMITED  
**DIAMOND DRILL RECORD**

HO No. K15

PROPERTY \_\_\_\_\_

ELEVATION \_\_\_\_\_

SHEET NO 2

BEARING \_\_\_\_\_

TOTAL DEPTH \_\_\_\_\_

LOCATION \_\_\_\_\_

DIP COLLAR \_\_\_\_\_

CORE SIZE \_\_\_\_\_

STARTED \_\_\_\_\_

COMPLETED \_\_\_\_\_

FROM	TO	DESCRIPTION	SAMPLE NO.	FROM	TO	CORE LENGTH	CORE RECOVERED	ASSAYS				REMARKS
27'	32'	SEDIMENTS Grey sediments as before 24' near the top - quartzite towards bottom.										
32'	37'	ACID TUFF - SEDIMENTS Grey medium grained, hard, siliceous well banded rock with pyrite on fractures. Banding 60°. 35' - A couple of coarse tuff bands 37' - A 3" band of ANDESITE										
37'	41'	QUARTZITE ? Scattered mica flakes										
41'	44'	COARSE TUFF - AGGLOMERATE Contact gradational getting coarser downwards. Bottom contact sharp.										
44'	49'6"	SEDIMENTS Very fine grained, dark grey to black, hard rock with minute specks of pyrrhotite all over and some specks of sphalerite. Pyrite veinlets on fractures. 46'-48'6" - somewhat coarser sediments with scattered mica and minute specks of pyrite and pyrrhotite. 46'6"-47'6" Quartz-feldspar-carbonate veinlet. 48'6"-49'6" Grey, hard tuffaceous sediments.										
49'6"	51'	BRECCIA Brecciated sediments with 10% sulphides on cracks, in veinlets and in the body; some quartz-carbonate-feldspar veinlets - some vuggy.										

DRILLED BY \_\_\_\_\_

SIGNED \_\_\_\_\_

SELCO EXPLORATION COMPANY LIMITED  
**DIAMOND DRILL RECORD**

HO No. K15

PROPERTY \_\_\_\_\_

ELEVATION \_\_\_\_\_

SHEET NO 3

BEARING \_\_\_\_\_

TOTAL DEPTH \_\_\_\_\_

LOCATION \_\_\_\_\_

DIP COLLAR \_\_\_\_\_

CORE SIZE \_\_\_\_\_

STARTED \_\_\_\_\_

COMPLETED \_\_\_\_\_

FROM	TO	DESCRIPTION	SAMPLE NO.	FROM	TO	CORE LENGTH	CORE RECOVERED	ASSAYS				REMARKS
51'	54'6"	<b>SEDIMENTS</b> As before 49'6" 51'-52' - with mica specks 52' - coarse tuff band 52'-54'6" Grey hard siliceous with 2% sulphides.										
54'6"	58'6"	<b>AGGLOMERATE</b> Coarse, mottled rock with fragments of tuff, sediments, rhyolite. Pyrite and pyrrhotite - up to 25% - occur as pods and interstitial grains; specks of sphalerite and chalcopryrite within pyrrhotite.										
58'6"	60'3"	<b>BROKEN SHALES</b> Fragments of well banded shales with pyrite and pyrrhotite between fragments. This rock may well be part of the agglomerate.										
60'3"	67'6"	<b>AGGLOMERATE</b> 25% sulphides as before 58'6" A band of shale at 67' - some pyrite along banding 60°-70°.										
67'6"	70'6"	<b>SHALES</b> Graphitic bands at 67'6" and 69'										
70'6"	73'6"	<b>COARSE TUFF - AGGLOMERATE</b> Sulphides not so abundant 71' 72' graphitic shale bands 72'-73'6" - A fracture along core										

DRILLED BY \_\_\_\_\_

SIGNED \_\_\_\_\_

SELCO EXPLORATION COMPANY LIMITED  
**DIAMOND DRILL RECORD**

HO No. K15

PROPERTY \_\_\_\_\_

ELEVATION \_\_\_\_\_

SHEET NO 4

BEARING \_\_\_\_\_

TOTAL DEPTH \_\_\_\_\_

LOCATION \_\_\_\_\_

DIP COLLAR \_\_\_\_\_

CORE SIZE \_\_\_\_\_

STARTED \_\_\_\_\_

COMPLETED \_\_\_\_\_

FROM	TO	DESCRIPTION	SAMPLE NO.	FROM	TO	CORE LENGTH	CORE RECOVERED	ASSAYS				REMARKS
73'6"	77'6"	FINE SEDIMENTS Mostly fractured rock with sulphides up to 20%. Rock tainted purple with mica.										
77'6"	78'	ACID TUFF Grey, coarse mottled tuffaceous rock										
78'	80'	FINE SEDIMENTS Grey, purplish, fine grained, hard, siliceous sediments.										
80'	80'6"	GRAPHITIC SHALE Bands of pyrite										
80'6"	87'	SEDIMENTS Coarser, grey at top and finer, banded, tainted with mica towards the bottom. 86' - Coarser grey, mottled tuff band										
87'	88'	RHYOLITE FLOW - and cherty band										
88'	89'6"	ANDESITE - A 3" band										
92'	99'3"	COARSE TUFF - AGGLOMERATE Coarser at bottom - some pyrrhotite in interstices										
99'3"	107'2"	SEDIMENTS Fine grained, grey sediments with graphitic shale bands. At 100' - a 4" band with pyrite veinlets along banding; some pyrrhotite specks.										Conductor

DRILLED BY \_\_\_\_\_

SIGNED \_\_\_\_\_

# DIAMOND DRILL RECORD

HO No. K15

PROPERTY \_\_\_\_\_

ELEVATION \_\_\_\_\_

SHEET NO 5

BEARING \_\_\_\_\_

TOTAL DEPTH \_\_\_\_\_

LOCATION \_\_\_\_\_

DIP COLLAR \_\_\_\_\_

CORE SIZE \_\_\_\_\_

STARTED \_\_\_\_\_

COMPLETED \_\_\_\_\_

FROM	TO	DESCRIPTION	SAMPLE NO.	FROM	TO	CORE LENGTH	CORE RECOVERED	ASSAYS				REMARKS
99'3"	107'2"	From 100'6" - grey quartzite with occasional black graphitic streak -60° -70° 103' - a 1" graphitic shale band with a few pyrite streaks. 106'-107' - very fine grained.										
107'2"	111'	<b>ACID TUFF</b> Grey - mottled, coarse tuffaceous, hard massive rock with quartz, feldspars and carbonate - some interstitial pyrite and pyrrhotite.										
111'	136'	<b>SEDIMENTS</b> Grey, fine grained, hard siliceous sediments with graphitic shale bands 50° -60°. Veinlet of pyrite and pyrrhotite. Minute specks of sulphides in the body of rock. 114' - Several black shaley partings and a 1" graphitic shale band with pyrite streaks. Top of band fractured and cemented with carbonate. Possibly some chalcopryite with pyrite. 117' - Another 3" area with graphitic shale bands - a few 1/8" pyrrhotite bands - some very finely disseminated pyrrhotite specks in greenish part of the rock. 117'6"-118' - Grey tuffaceous band. 118' - Few black partings - some chalcopryite inside a pyrrhotite streak. 123'4"-124' - Bands of black shaley rock with pyrite and pyrrhotite streaks - specks of sphalerite.										

DRILLED BY \_\_\_\_\_

SIGNED \_\_\_\_\_

# DIAMOND DRILL RECORD

HOLE No. K15

PROPERTY \_\_\_\_\_

ELEVATION \_\_\_\_\_

SHEET NO 6

BEARING \_\_\_\_\_

TOTAL DEPTH \_\_\_\_\_

LOCATION \_\_\_\_\_

DIP COLLAR \_\_\_\_\_

CORE SIZE \_\_\_\_\_

STARTED \_\_\_\_\_

COMPLETED \_\_\_\_\_

FROM	TO	DESCRIPTION	SAMPLE NO.	FROM	TO	CORE LENGTH	CORE RECOVERED	ASSAYS				REMARKS
								Au oz/ton	Cu %	Zn %		
111'	136'	126'-127' - Spotted rock - discolouration centres due to alteration. 126'6" - Indefinite banding 60° 129' - Shaley bands with pyrite and pyrrhotite pods. 133'-134' - A few black, shaley bands with pyrrhotite veinlets; pyrite slivers on fractures. 134'-135' - Coarse tuffaceous band 135'-136' - Black shaley bands with pyrrhotite										
137'	176'	<b>COARSE TUFF - AGGLOMERATE</b> Coarse grey-mottled, hard, fragmental rock. To 140' - medium grained At 140' - a few pods of pyrite and pyrrhotite in black fragments. Fine interstitial pyrrhotite 1-2%. 146'6" - Band of coarser pyrrhotite 149'-150' Fracture along core - some pyrite on fracture. To 153' - Sulphides increasing to 10% Possibly pale brown specks of sphalerite 155'-156' Grey, medium grained sediments 156'-161'6" Agglomerate with sulphides 161'6"-163' Sulphides less abundant - decreasing further to 169' 169'-173 Finer grained mottled purplish -white band; sulphides much less abundant. 173'-176' Agglomerate - 2-3% sulphides.	2985	150'6"	154'6"							
			2987	154'6"	158'6"							

DRILLED BY \_\_\_\_\_

SIGNED \_\_\_\_\_

# DIAMOND DRILL RECORD

HOLE NO. K15

PROPERTY \_\_\_\_\_

SHEET NO 7

BEARING \_\_\_\_\_

ELEVATION \_\_\_\_\_

LOCATION \_\_\_\_\_

DIP COLLAR \_\_\_\_\_

TOTAL DEPTH \_\_\_\_\_

CORE SIZE \_\_\_\_\_

STARTED \_\_\_\_\_

COMPLETED \_\_\_\_\_

FROM	TO	DESCRIPTION	SAMPLE NO.	FROM	TO	CORE LENGTH	CORE RECOVERED	ASSAYS				REMARKS
176'	259'	<p><b>SEDIMENTS</b>                      Grey, fine grained, hard siliceous banded (60°-70°) with quartz, feldspars carbonate - veinlet of pyrite at 179'6".                      186' - a 4" green basic band (Andesite) with some pods of pyrrhotite and a veinlet of quartz carbonate and pyrrhotite.                      187'-188'8" - a few black, finer grained streaks; 1/2" pyrite and pyrrhotite at 187'8"; 188'6"; 189'.                      193'6" - Dark siliceous band with irregular pyrrhotite veinlet.                      194'-194'6" - Same as at 193'6" but very fine pyrrhotite almost fills the rock.                      195'-195'6" - Coarse tuffaceous grey band followed again by dark siliceous rock full of pyrrhotite.                      196'6"-197' - Coarse tuffaceous band                      From 197' some interstitial sulphides                      To 207'6" occasional black band; number increasing downwards.                      202'6"-202'10" Black graphitic shales with a 1" and 1/2" pyrite veins with vugs. Some minor streaks of pyrite and pyrrhotite.                      207'-208' - A few black shale bands with pyrrhotite veinlets.                      208' - Pyrite veinlets.                      210'-213'9" - A few coarser white bands                      214' - A 2" band of shale with pyrite vein along banding 60°-70°</p>										

DRILLED BY \_\_\_\_\_

SIGNED \_\_\_\_\_



SELCO EXPLORATION COMPANY LIMITED  
**DIAMOND DRILL RECORD**

HOLES No. K15  
SHEET NO 8  
LOCATION

PROPERTY \_\_\_\_\_

BEARING  
DIP COLLAR

ELEVATION  
TOTAL DEPTH  
CORE SIZE

STARTED

COMPLETED

FROM	TO	DESCRIPTION	SAMPLE NO.	FROM	TO	CORE LENGTH	CORE RECOVERED	ASSAYS				REMARKS
176'	259'	<p>218' - Another black, shaley band with veinlets of pyrite - bands contorted;</p> <p>To 220' dark siliceous sediments with abundant specks of pyrrhotite</p> <p>226' - A 2" band of shaley rock with an 1/8" veinlet of pyrite and pyrrhotite - possibly specks of sphalerite.</p> <p>227' - A Rhyolitic spotted tuff band</p> <p>229'-229'6" - Coarser, purplish, mottled sediments</p> <p>229'6" A veinlet of pyrite and one of pyrrhotite followed by 4" of fine siliceous rock with specks of pyrrhotite.</p> <p>231'-232' - Fracture along core</p> <p>233' - Core broken</p> <p>238' - A section of 4' core ground</p> <p>230'-238' Coarse mottled bands</p> <p>From 238' Finer sediments with pyrrhotite specks and occasional black, shaley band.</p> <p>Sulphide veinlets at: 245'; 247'-248'.</p> <p>248'-250' Coarser tuff with inclusions of pale coarse sediment fragments with abundant interstitial pyrite.</p> <p>250' - Some black bands with pyrite veinlets and a speck or two of sphalerite. Dark bands increase in number downwards.</p> <p>254' - Pyrite and pyrrhotite veinlet</p> <p>255' - A 1" pyrite veinlet</p> <p>A few veinlets and blebs of sulphides to 258'6"</p> <p>259' - Core broken up.</p>										

DRILLED BY \_\_\_\_\_

SIGNED \_\_\_\_\_

# DIAMOND DRILL RECORD

HO No. K15

PROPERTY \_\_\_\_\_

ELEVATION \_\_\_\_\_

SHEET NO 9

BEARING \_\_\_\_\_

TOTAL DEPTH \_\_\_\_\_

LOCATION \_\_\_\_\_

DIP COLLAR \_\_\_\_\_

CORE SIZE \_\_\_\_\_

STARTED \_\_\_\_\_

COMPLETED \_\_\_\_\_

FROM	TO	DESCRIPTION	SAMPLE NO.	FROM	TO	CORE LENGTH	CORE RECOVERED	ASSAYS				REMARKS
								Au oz/ton	Cu %	Zn %		
259'	275'	<p><b>GRAPHITIC SHALE</b>                      Predominantly black, soft, shaley rock with blebs, streaks and veinlets of pyrite. Bands of grey, medium grained to fine grained siliceous sediments 80° blebs of pyrite lined with pyrrhotite.                      261' - Sphalerite specks with irregular pyrite veinlets.                      263' - A 4" grey sediments band                      264' - Broken core                      264'-267' Contorted black sediments with veinlets of quartz, feldspars and carbonate; pyrite and pyrrhotite streaks, blebs and fragments.                      From 267' - Mostly graphitic shale with 10% pyrite in blebs and veinlets - sometimes lined with carbonate. Occasional speck of sphalerite. Finely disseminated pyrrhotite.                      274' - A coarse white tuff band with interstitial pyrite.</p>	2986	268'	271'	3'0"		N11	.05	.15		
275'	284'	<p><b>ACID TUFF</b>                      Grey, medium grained, hard, massive to indistinctly banded rock with quartz and feldspars. Occasional fracture filled with carbonate and occasional pod of pyrite.                      From 279' - Bands of cherty, rhyolitic tuff; some pyrite pods.</p>										
284'	289'	<p><b>ACID AGGLOMERATE</b>                      Coarse white, hard, massive rock with fragments (1 cm) of quartz. Pyrite 1% as fragments. Some carbonate on veinlets.</p>										

DRILLED BY \_\_\_\_\_

SIGNED \_\_\_\_\_

SELCO EXPLORATION COMPANY LIMITED  
**DIAMOND DRILL RECORD**

HO No. K15  
SHEET NO 10  
LOCATION

PROPERTY \_\_\_\_\_

BEARING  
DIP COLLAR

ELEVATION  
TOTAL DEPTH  
CORE SIZE

STARTED

COMPLETED

FROM	TO	DESCRIPTION	SAMPLE NO.	FROM	TO	CORE LENGTH	CORE RECOVERED	ASSAYS				REMARKS
289'	291'	<b>SEDIMENTS</b> Fine to medium grained siliceous rock with 60% pyrrhotite - occasional crystal of pyrite.										
291'	299'	<b>COARSE ACID TUFF - AGGLOMERATE</b> White coarse rock - grain size increasing downwards - specks of pyrrhotite. 294'-295' Fracture 296' - Finer band.										
299'	309'	<b>ACID TUFF</b> Grey-purplish fine to medium grained massive, hard siliceous rock. At 302' a coarser agglomeratic band 303' - Specks and fragments of pyrrhotite 304'-305' - Another coarse band - matrix purplish, more basic. 308'3"-308'9" - A basic andesitic band. Green, fine grained flow with 25% pyrrhotite.										
309'	311'3"	<b>SEDIMENTS</b> Grey-purplish, fine grained, siliceous sediments. 311'-311'3" - Black shale bands with pyrite and pyrrhotite veinlets.										
311'5"	365'	<b>ACID TUFF</b> Grey, medium grained, hard, massive rock; mainly quartz with feldspars - getting coarser downwards to 317'. At 327' and 328'-329' finer band -70° 332'-336' Agglomerate - a much coarser band of purplish tinge.										

DRILLED BY \_\_\_\_\_

SIGNED \_\_\_\_\_

SELCO EXPLORATION COMPANY LIMITED  
**DIAMOND DRILL RECORD**

HO No. K15  
SHEET NO 11  
LOCATION

PROPERTY \_\_\_\_\_

BEARING  
DIP COLLAR

ELEVATION  
TOTAL DEPTH  
CORE SIZE

STARTED

COMPLETED

FROM	TO	DESCRIPTION	SAMPLE NO.	FROM	TO	CORE LENGTH	CORE RECOVERED	ASSAYS				REMARKS	
311'5"	365'	336'-338'6" Darker, finer grained 338'6"-341'6" Grey, fine to medium grained massive, hard siliceous tuff or sediments. Numerous specks of pyrrhotite. 341'6"-344' Coarser purplish tuff. 344'-345' -Finer band 350'-351' Finer band, some pyrrhotite specks and a veinlet at 350'3" 360'-361' - Very coarse agglomeratic band 363'-365' - Fine grained, grey, bleached band 364'8" - A dark siliceous band with 40% pyrrhotite in very fine specks.											
365'	367'	<b>BASALT</b> Dark green, medium grained, massive hard rock with hornblende and feldspars. 367' - a 1" veinlet of carbonate.											
367'	372'	<b>RHYOLITE FLOWS - TUFFS</b> in 6" bands.											
372'	394'	<b>COARSE ACID TUFF - AGGLOMERATE</b> Acid pyroclastic rock; pinkish feldspar fragments grow in number 391' - A fine grained band.											
394'	412'	<b>ACID TUFF</b> Grey, finer grained, hard, siliceous massive rock with coarser bands.											

DRILLED BY \_\_\_\_\_

SIGNED \_\_\_\_\_

SELCO EXPLORATION COMPANY LIMITED  
**DIAMOND DRILL RECORD**

HOLE NO. K15

PROPERTY \_\_\_\_\_

ELEVATION \_\_\_\_\_

SHEET NO 12

BEARING \_\_\_\_\_

TOTAL DEPTH \_\_\_\_\_

LOCATION \_\_\_\_\_

DIP COLLAR \_\_\_\_\_

CORE SIZE \_\_\_\_\_

STARTED \_\_\_\_\_

COMPLETED \_\_\_\_\_

FROM	TO	DESCRIPTION	SAMPLE NO.	FROM	TO	CORE LENGTH	CORE RECOVERED	ASSAYS				REMARKS
412'	468'	<b>AGGLOMERATE</b> Coarse, purple, massive hard rock Feldspars and quartz are main constituents 434'-437' Core broken 454'-458' Finer grained purplish tuff 467'-468' Finer grained purplish tuff										
468'	470'	<b>BASALT</b> Green, fine grained, massive, crystalline rock with hornblende, chlorite and feldspars - some carbonate veinlets.										
470'	486'	<b>ACID TUFF</b> Fine to medium grained massive to faintly banded hard rock. 472'-474' Agglomerate band 475'-476' Spotted band 477' Bleached band 485'-486' Rhyolite flow										
486'	489'	<b>BASIC TUFF</b> Dark green, medium grained rock with larger fragments and crystals of feldspars.										
489'	493'	<b>ACID TUFF - AGGLOMERATE</b>										
493'	494'	<b>ACID TUFF - SEDIMENTS</b> Very fine grained, siliceous, dark rock with specks of pyrrhotite on fractures.										
494'	498'	<b>COARSE ACID TUFF - AGGLOMERATE</b> Purplish, hard fragmental rock.  END OF HOLE.										

DRILLED BY \_\_\_\_\_

SIGNED \_\_\_\_\_

# DIAMOND DRILL RECORD

HOE NO. K16  
 SHEET NO 1  
 LOCATION 7+60W; 35+90N

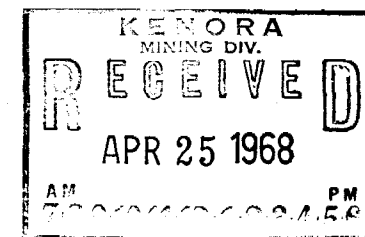
PROPERTY KAKAGI LAKE VALLEY GROUP 25C-45A

BEARING 300°A  
 DIP COLLAR -45°  
 At 360' -46°

ELEVATION  
 TOTAL DEPTH 363'  
 CORE SIZE 15/16"

STARTED April 1, 1968 COMPLETED April 4, 1968

FROM	TO	DESCRIPTION	SAMPLE NO.	FROM	TO	CORE LENGTH	CORE RECOVERED	ASSAYS				REMARKS
0	7'	CASING										
7'	50'	<p><b>COARSE ACID TUFF</b>                      Purplish, medium to coarse, massive, hard to fairly hard rock with white feldspar fragments in purplish siliceous to feldspathic ground mass; interstitial pyrrhotite not very abundant. Some pyrrhotite also in veinlets with carbonates - Oxidized sulphides on fractures. Pyrite veinlet at 13'.                      19' Pyrrhotite blebs                      From 24' large dark fragments with minute specks of pyrrhotite; also greenish, medium grained massive rock with chlorite, amphibole and feldspar cemented by paler, siliceous rock with inclusions of quartz. Ubiquitous pyrrhotite specks but most abundant in dark purplish rock. Inclusions of white feldspathic rock with pyrrhotite veining. From 47' purple, finer grained rock - fewer white feldspars.</p>										
50'	61'	<p><b>ACID TUFF - SEDIMENTS</b>                      Dark purple, finer grained, massive hard rock, composed mainly of quartz with mica imparting purple colour. Occasional pale inclusions with pyrite inside; some pale, bleached bands around 60'.</p>										
61'	71'	<p><b>ACID TUFF</b>                      Coarse purplish-white mottled siliceous massive rock, with quartz and feldspars in spots and altered grains cemented by finer purplish mass of quartz and feldspars.</p>										



# DIAMOND DRILL RECORD

HOLES No. K16

PROPERTY \_\_\_\_\_

SHEET NO 2

BEARING \_\_\_\_\_

ELEVATION \_\_\_\_\_

LOCATION \_\_\_\_\_

DIP COLLAR \_\_\_\_\_

TOTAL DEPTH \_\_\_\_\_

CORE SIZE \_\_\_\_\_

STARTED \_\_\_\_\_

COMPLETED \_\_\_\_\_

FROM	TO	DESCRIPTION	SAMPLE NO.	FROM	TO	CORE LENGTH	CORE RECOVERED	ASSAYS				REMARKS
61'	71'	Occasional veinlet of quartz-feldspars carbonate. Slivers of pyrite on fractures and specks of pyrrhotite in interstices.										
71'	83'	AGGLOMERATE ? Bands and large fragments of different rocks - as before 50'. Pale, coarse tuff, fine grained, cherty flow, acid, fine grained tuff. Occasional veinlets of quartz-carbonate-feldspar. 75' - A band of 20% pyrrhotite in interstices and in large blebs. To 80' - Pyrrhotite 5% 78'-80' - Few, very pale cherty bands with darker inclusions.										
83'	95'	ACID TUFF - SEDIMENTS Grey purplish, fine grained banded rock with bedding 45°-50° and bleached veining at an angle of 85° - A few blebs of pyrrhotite and a couple of veinlets along banding. 89' - A few specks of pyrrhotite 90'-91' - A few specks of pyrrhotite and two veinlets. 92'-93' - Agglomerate band with blebs of pyrrhotite. 93'-95' - Grey with chloritic bands 45°										
95'	114'	ACID AGGLOMERATE Different rock fragments; banded acid tuff, sediments, occasional fragment of rhyolite, coarser basic tuff; fragments connected by cherty fine grained material with inclusions of quartz. Pyrrhotite as pods, veins, and interstitial specks										

DRILLED BY \_\_\_\_\_

SIGNED \_\_\_\_\_

SELCO EXPLORATION COMPANY LIMITED  
**DIAMOND DRILL RECORD**

HO No. K16  
SHEET NO 3  
LOCATION

PROPERTY \_\_\_\_\_

BEARING  
DIP COLLAR

ELEVATION  
TOTAL DEPTH  
CORE SIZE

STARTED

COMPLETED

FROM	TO	DESCRIPTION	SAMPLE NO.	FROM	TO	CORE LENGTH	CORE RECOVERED	ASSAYS				REMARKS
95'	114'	up to 5%; minor pyrite. 104'-105' Fine, bleached, tuff band 106'6"-106'9" Greenish chloritic inclusion: 106'9"-107' - Solid pyrrhotite 108' - Specks of sphalerite										
114'	133'6"	ACID TUFF and SEDIMENTS Black, grey and purplish fine grained well banded (45°) hard rock. 123 - Core Broken Occasional veinlet and numerous specks of pyrrhotite in dark, purplish fine grained rock. Occasionally a speck of chalcopyrite within pyrrhotite. 128' -Pyrite veinlet Occasional quartz-carbonate-feldspar veinlet 128' -Inclusion of coarse gabbroic rock 128'-129' Coarser, bleached tuff 129'-131' Black bands with numerous pyrrhotite veinlets along banding up to 10%, followed by grey, fine grained tuff. 133'6" - Core broken.										
133'6"	177'	ACID TUFF and SEDIMENTS Essentially rock the same as above but massive coarser tuff bands come in and black, well banded some graphitic sediments appear. To 134' - Fragmental - pale grey. 134'-135' Black hard shale with 20% pyrrhotite. 135'-138' Coarser, siliceous tuff - some interstitial pyrrhotite.										Conductor

DRILLED BY \_\_\_\_\_

SIGNED \_\_\_\_\_



SELCO EXPLORATION COMPANY LIMITED  
**DIAMOND DRILL RECORD**

HO No. K16  
SHEET No 4  
LOCATION \_\_\_\_\_

PROPERTY \_\_\_\_\_

BEARING \_\_\_\_\_  
DIP COLLAR \_\_\_\_\_

ELEVATION \_\_\_\_\_  
TOTAL DEPTH \_\_\_\_\_  
CORE SIZE \_\_\_\_\_

STARTED \_\_\_\_\_

COMPLETED \_\_\_\_\_

FROM	TO	DESCRIPTION	SAMPLE NO.	FROM	TO	CORE LENGTH	CORE RECOVERED	ASSAYS				REMARKS
133'6"	177'	139'6"-140'6" Fine, dark, hard sediments with 10% pyrrhotite. 140'6"-141'6" Coarse tuff with 5% pyrrhotite To 145' fine grey sediments - 1% pyrrhotite 145'-146' Black, fine grained sediments - 10% 146'-147'9" Agglomeratic band 15% pyrrhotite, some pyrite on fractures and in grains; some specks of chalcopyrite. 147'9"-148'3" Graphitic shale Soft black rock with pyrrhotite veinlets and streaks - some carbonate veinlets. Pyrite veinlets in lower part, with grains of sphalerite. 148'3"-149' Agglomerate band with pyrite veinlets and streaks up to 10% 149'-149'3" Hard black rock with contorted banding Pyrite veinlets along banding and on fractures. 149'3"-156' - Grey acid tuff - some bands coarser spotted. 156' - A 6" band of agglomerate with 15% pyrite in blebs. 156'6" Grey acid tuffs and sediments, very few specks of pyrrhotite To 177' Predominantly banded acid fine tuffs and sediments 159'6" Black, fine grained sediment with pyrite veins 160' - A 6" agglomerate band 160'6" A 2" hard, black band with pyrite veinlets 163'6" - possibly an acid flow 168' - Veinlets of chlorite and pyrite next to a 6" basic band 172'-174' - A coarse, bleached band with veinlets of quartz, feldspar and carbonate.									Conductor	

DRILLED BY \_\_\_\_\_

SIGNED \_\_\_\_\_

SELCO EXPLORATION COMPANY LIMITED  
**DIAMOND DRILL RECORD**

HO NO. K16  
SHEET NO 5  
LOCATION

PROPERTY \_\_\_\_\_

BEARING  
DIP COLLAR

ELEVATION  
TOTAL DEPTH  
CORE SIZE

STARTED

COMPLETED

FROM	TO	DESCRIPTION	SAMPLE NO.	FROM	TO	CORE LENGTH	CORE RECOVERED	ASSAYS			REMARKS
								Au oz/ton	Cu %	Zn %	
133'6"	177'	177'- A 2" band of black, fine grained rock with pyrite and pyrrhotite veinlets along banding -50									
177'	219'	COARSE TUFF Coarse, purplish, hard, massive rock with quartz, feldspars and occasional specks and veinlets of pyrrhotite; also some sphalerite specks. 187'6"-188'3" Solid pyrrhotite - very fine grained banded. 195'-197' Fine grained tuff band 201'-204' Another fine grained band pods of pyrrhotite at 212' From 204' purple tuff with white spots of feldspar crystals and fragments. 213'-217' Greenish, fine grained Andesitic band followed by siliceous fine grained rock with pods and veinlets of pyrrhotite.									Conductor
219'	247'	ACID AGGLOMERATE Fragments of tuffs (5 mm) with pods and interstitial pyrrhotite increasing downwards. At 233' a few specks of chalcopyrite in pyrrhotite From 235' to 247' pyrrhotite gives way to pyrite which constitutes 20% of the rock - as pods, veinlets in agglomerate; occasional specks of sphalerite, some pyrite at 242' looks very yellow. More pyrrhotite towards bottom; a few specks of sphalerite at 247'.	2984	239'	242'	3'0"		N11	.03	Trace	

DRILLED BY \_\_\_\_\_

SIGNED \_\_\_\_\_

SELCO EXPLORATION COMPANY LIMITED  
**DIAMOND DRILL RECORD**

HO No. **K16**  
SHEET NO **6**  
LOCATION \_\_\_\_\_

PROPERTY \_\_\_\_\_

BEARING \_\_\_\_\_  
DIP COLLAR \_\_\_\_\_

ELEVATION \_\_\_\_\_  
TOTAL DEPTH \_\_\_\_\_  
CORE SIZE \_\_\_\_\_

STARTED \_\_\_\_\_

COMPLETED \_\_\_\_\_

FROM	TO	DESCRIPTION	SAMPLE NO.	FROM	TO	CORE LENGTH	CORE RECOVERED	ASSAYS				REMARKS
247'	271'	<p><b>ACID TUFF - SEDIMENTS</b> Grey, fine grained, massive to indistinctly banded, hard, siliceous rock. Some fractures at 264' and a pod of pyrrhotite; some minute carbonate veinlets.</p>										
271'	277'	<p><b>BRECCIA</b> Fragments of fine to medium grained hard acid tuff or sediments, black shaley graphitic rocks, pods and blebs of pyrrhotite and pyrite - to 15%. 271'-271'6" - Agglomerate 271'6"-272'6" Banded sediments black and grey.</p>										
277'	335'	<p><b>ACID TUFF and SEDIMENTS</b> Fine to medium grained banded, hard siliceous rock with quartz as main constituent. 281' - A quartz-carbonate veinlet with some pyrite. 285' - A few pyrite and pyrrhotite veinlets with black bands. 291' - Another band with black partings Veinlets of pyrite and pyrrhotite -45°. 298' - Some pyrrhotite associated with whitish coarser material in veinlet form. 303' - A few bands of coarser, spotted rock 308' - Darker band with fine pyrrhotite specks and veinlets. 312'-316' Several minute quartz-carbonate veinlets - some pyrrhotite veinlets at 315. 318'8"-320' Coarse agglomerate band. 321' - A 6" black very fine grained band with scattered pyrrhotite. Also veinlets of pyrite and pyrrhotite. 324' - Another black band with a few pyrite and pyrrhotite veinlets.</p>										

DRILLED BY \_\_\_\_\_

SIGNED \_\_\_\_\_

# DIAMOND DRILL RECORD

HOLE NO. K16

PROPERTY \_\_\_\_\_

ELEVATION \_\_\_\_\_

SHEET NO 7

BEARING \_\_\_\_\_

TOTAL DEPTH \_\_\_\_\_

LOCATION \_\_\_\_\_

DIP COLLAR \_\_\_\_\_

CORE SIZE \_\_\_\_\_

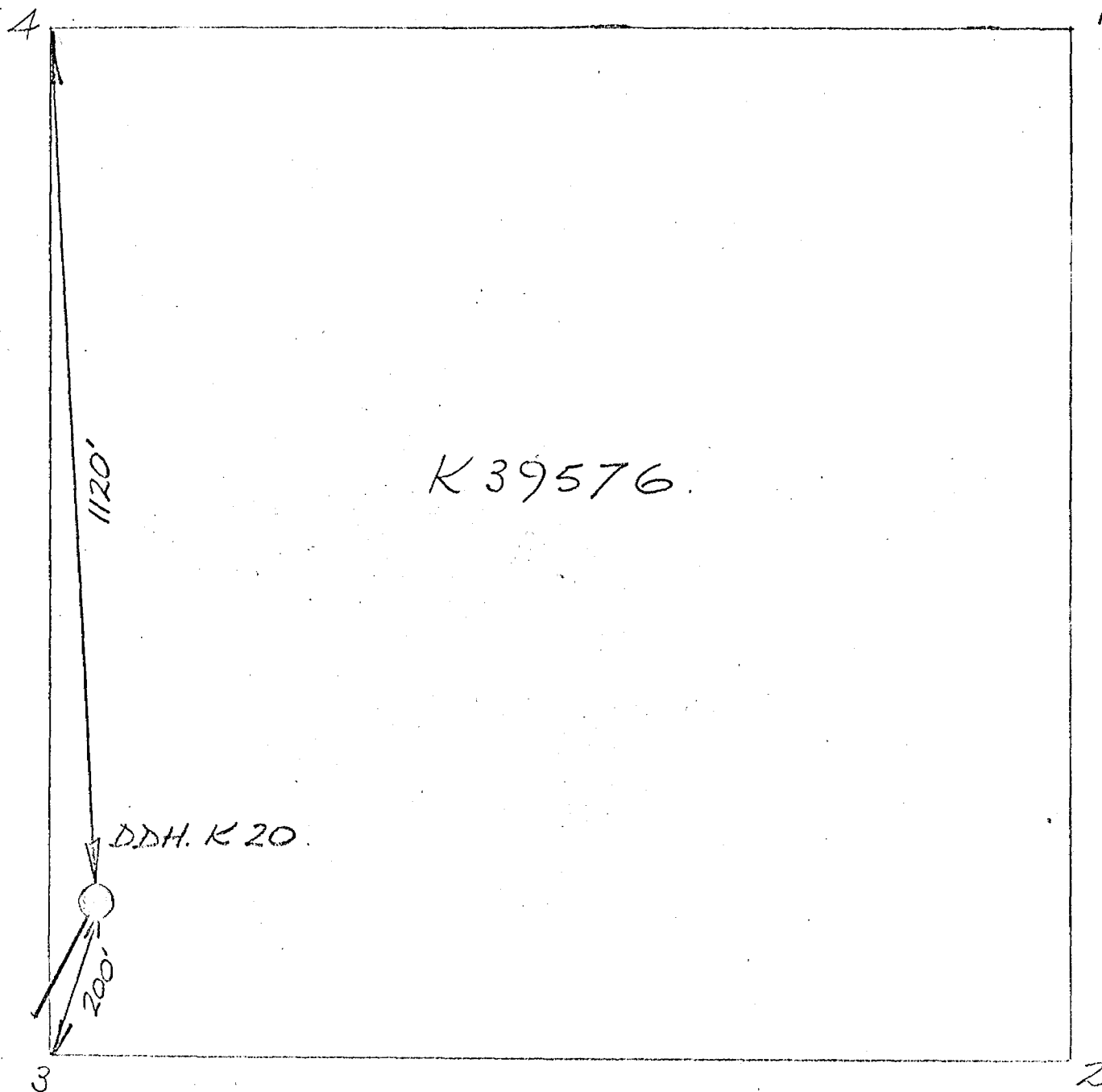
STARTED \_\_\_\_\_

COMPLETED \_\_\_\_\_

FROM	TO	DESCRIPTION	SAMPLE NO.	FROM	TO	CORE LENGTH	CORE RECOVERED	ASSAYS				REMARKS
277'	335'	329'-330' Coarse tuffaceous, bleached spotted band 330'-331' Ground core 331' - Cherty, rhyolitic band with pyrite veins. 334' - Well banded rock with a few pyrite veins.										
335'	337'6"	GRAPHITIC SHALES Black shaley graphitic rock with pyrite and pyrrhotite veins; network of carbonate veinlets. A few specks of sphalerite at top.										
337'6"	342'	ACID TUFF Medium grained, pale grey, massive hard rock.										
342'	346'6"	SEDIMENTS Grey, fine grained, banded, hard rock - some inclusions of former.										
346'6"	363'	COARSE ACID TUFF Purplish, coarse, hard, massive rock.										
END OF HOLE												

DRILLED BY \_\_\_\_\_

SIGNED \_\_\_\_\_



KENORA  
MINING DIV.  
**RECEIVED**  
SEP 25 1968  
AM 7 8 9 10 11 12 1 2 3 4 5 6 PM



Scale: 1" = 200'

K 39576 - (M2585 - Dogpaw L)

D. D. HOLE No. K-20

Loc. Little Stephen Lake  
 Dip collar : -45 Bearing collar : 210° Length: 2  
 12+00N : : Collar el. :  
 1+15E : : Bottom el. :

Drilled by: Edwards Core size: EX Bogun: July 25 Ended: July 28 Logged by: DAL

Samples	Footage drilled				Geology
	From	To	Lon.	Rec.	
				%	
	0	2 1/2			Casing - Start in bedrock.
	2 1/2	138			At 2 1/2' diorite phase the gabbro. Contains a few scattered specks of pyrrhotite and pyrite. A sulphide content of less than 1%. The diorite becomes finer grained towards the contact at 138. At the contact there's a minor quartz-vein possibly an inch wide with pyrrhotite.
	138	156			Dacitic tuffs which contain scattered stringers of pyrrhotite- pyrite mixture and the occasional widely scattered speck of chalcopyrite.
	149.6	151			Minor graphitic development in tuff.
				@	147 a 2 inch band of graphitic which contains pyrite
	156	176			Fine-grained diorite which contains fine pyrrhotite pyrite. Probably less than 1%
	176	193			Dacitic tuff. The tuff contains a few pyrrhotite stringers widely scattered.
	193	216.5			Porphyritic phase of the intrusive. This rock consists of amphibole feldspar aggregate with some possible biotite and some amphibole contains in places possibly around 2% sulphides.
	216.5	251			Dacite tuff. At 218.5 there's a minor graphitic shear with a few specks of chalcopyrite on it. This section of tuff is almost entirely rhyolitic. The banding is about 45° to core axis.

KENORA  
 RECEIVED  
 SEP 25 1968  
 AM 7:29 PM 7:29:58

D. D. Hole No. K-20



4

1

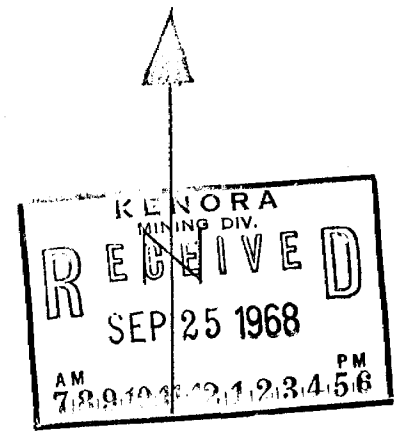
K-39580

DD.H. K 22

920'

1050'

3



Scale: 1" = 200'



SELCO EXPLORATION COMPANY LIMITED  
**DIAMOND DRILL RECORD**

HOLE NO. K-22

PROPERTY Stevens Lake

ELEVATION

SHEET NO 1

BEARING 255°

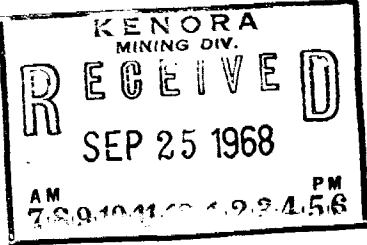
TOTAL DEPTH 221'

LOCATION 60' West of 4 + 00E  
on line 4 + 00N

DIP COLLAR 45°

CORE SIZE EXT

STARTED Aug. 10. 1968 COMPLETED Aug. 12, 1968

FROM	TO	DESCRIPTION	SAMPLE NO.	FROM	TO	CORE LENGTH	CORE RECOVERED	ASSAYS				REMARKS
								Au	Ag	Cu	Zn	
0	45'	Gabbro.										
45'	52'	Acid flow rock with pyrite stringers.										
52'	72'	Acid tuffs.										
72'	96'	Gabbro-porphry										
96'	103'	Acid flow rock - minor disseminated sulphides	9540	99	100	1'	1'	Nil	0.04			
103'	112'	Graphitic shear zone with stringers and veinlets of sulphides.	9541	107	109	1'	1'		1.57		0.22	
			9542	109	111.2	26"	26"		2.30	0.26	2.97	
			9543	111.2	113.5	15"	15"		0.12		0.22	
112'	172'	Acid tuffs with disseminated sulphides less than 5%.										
172'	199'	Tuffaceous with pink feldspar and considerable carbonate.										
199'	216'	Acid tuffs										
216'	221'	Same as 172 - 199										
22'		END OF HOLE										

DRILLED BY Jack Edwards Drilling Co.

SIGNED D. Watson.