

2 . 25790

**Metalore Resources Limited.**

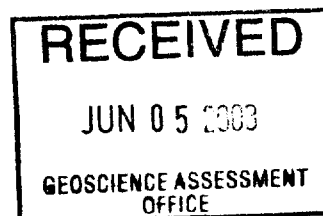
**Report of Prospecting and Sampling**

**(May 2 - May 7/ 2003)**

**Northeast Cedartree Lake Area  
Dogpaw Lake (G-2613)**

**Northwestern Ontario**

**NTS: 52-F-5**



**JUNE 2003**

**Armen Chilian  
Geological Consultant  
London, Ontario**



## Table of Contents

Location and Access .....	3
Property Outline .....	3
Property Tenure .....	6
Previous Work.....	6
Personnel and Dates of Work .....	7
Property Geology and Observations .....	7
Conclusions and Recommendations.....	11
References.....	13

### **Swastika Laboratories Assay Sheet**

#### **List of Tables**

Table 1: Claims

#### **List of Figures**

Figure 1: General Location Map

Figure 2: Claims that were Prospected

Figure 3: Regional Geology

Figure 4: Cedartree Lake Area

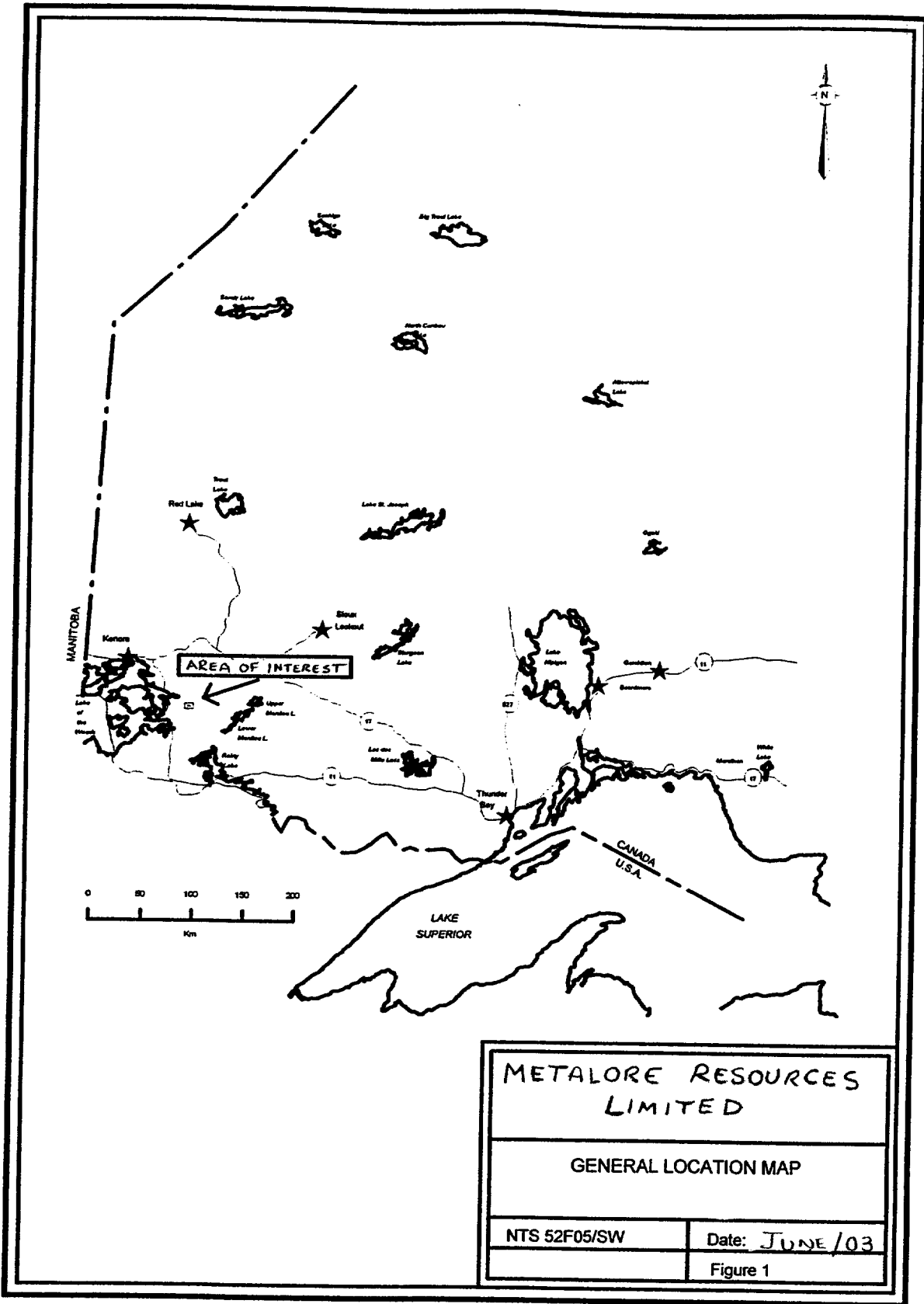
Figure 5: Sample Locations

## **Location and Access**

The property is located in the Kenora Mining Division of Northwestern Ontario, approximately 70 kilometers south-southeast of the town of Kenora (Figure 1). The town of Sioux Narrows, located on Highway 71 and on the east shore of Lake of the Woods, is 15 kilometers northwest of the property. The property is accessed by travelling east along Cameron Lake Road (off Highway 71) approximately 10 kilometers south of Sioux Narrows. Travel on Cameron Lake road requires a special permit issued by the Ministry of Natural Resources in Kenora and is subject to the approval of Nuinsco Resources Limited. At mileage 11.0 road marker, a bush road diverges east from the main road and extends to the Dubenski property to Cedar Tree lake where access to the sampled area is possible by boat.

## **Property Outline**

Prospecting, sampling and lithological contact observations covered three claims in areas northeast of Cedartree Lake (Figure 2)



METALORE RESOURCES  
LIMITED

GENERAL LOCATION MAP

NTS 52F05/SW	Date: JUNE/03
	Figure 1

Date / Time of Issue: Wed Jun 04 09:09:31 EDT 2003

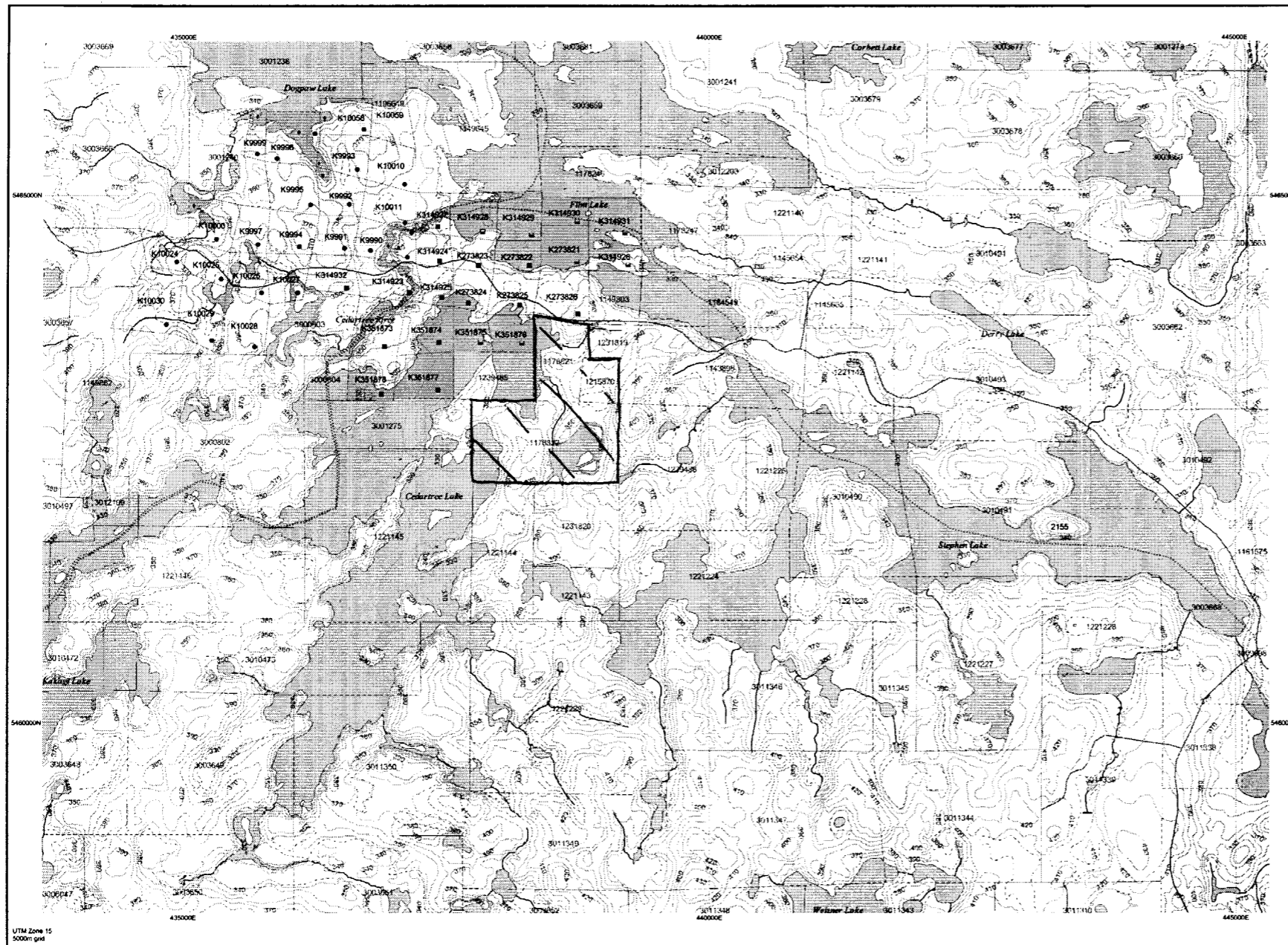
TOWNSHIP / AREA  
DOGPAW LAKE ARE

PLAN  
G-2613

ADMINISTRATIVE DISTRICTS / DIVISIONS

Mining Division  
Land Titles/Registry Division  
Ministry of Natural Resources District

Kenora  
KENORA  
KENORA

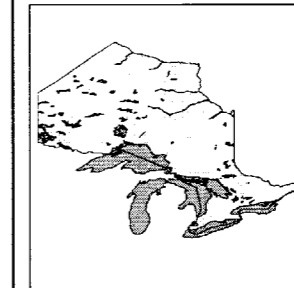


TOPOGRAPHIC

- Administrative Boundaries
- Township
- Concession Lot
- Provincial Park
- Indian Reserve
- CR, PR & PIR
- Contour
- Mine Shafts
- Mine Headframe
- Railway
- Road
- Trail
- Natural Gas Pipeline
- Utilities
- Tower

Land Tenure

- Freehold Patent
  - Surface And Mining Rights
  - Surface Rights Only
  - Mining Rights Only
- Leasehold Patent
  - Surface And Mining Rights
  - Surface Rights Only
  - Mining Rights Only
- Licence of Occupation
  - Uses Not Specified
  - Surface And Mining Rights
  - Surface Rights Only
  - Mining Rights Only
  - Land Use Permit
  - Order In Council (Not open for staking)
  - Water Power Lease Agreement



LAND TENURE WITHDRAWALS

- 1234 Areas Withdrawn from Disposition
- Mining Acts Withdrawal Types
  - Surface And Mining Rights Withdrawn
  - Surface Rights Only Withdrawn
  - Mining Rights Only Withdrawn
- Order In Council Withdrawal Types
  - Surface And Mining Rights Withdrawn
  - Surface Rights Only Withdrawn
  - Mining Rights Only Withdrawn
- 1234 IMPORTANT NOTICES



LAND TENURE WITHDRAWAL DESCRIPTIONS

Identifier	Type	Date	Description
2155	Wen	Jan 1, 2001	W20/82 MAR 1/72 M&S 162473

Fig. 2

Claims that were prospected

Those wishing to stake mining claims should consult with the Provincial Mining Recorders' Office of the Ministry of Northern Development and Mines for additional information on the status of the lands shown hereon. This map is not intended for navigational, survey, or land title determination purposes as the information shown on this map is compiled from various sources. Completeness and accuracy are not guaranteed. Additional information may also be obtained through the local Land Titles or Registry Office, or the Ministry of Natural Resources.

The information shown is derived from digital data available in the Provincial Mining Recorders' Office at the time of downloading from the Ministry of Northern Development and Mines web site.

General Information and Limitations

Contact Information:  
Provincial Mining Recorders' Office  
Water Green Miller Centre 933 Ramsey Lake Road  
Sudbury ON P3E 6B5  
Home Page: [www.mndm.gov.on.ca/MINDMINRESLANDS/mis/mnpgp.htm](http://www.mndm.gov.on.ca/MINDMINRESLANDS/mis/mnpgp.htm)

Toll Free  
Tel: 1 (800) 415-2845 ext 578  
Fax: 1 (877) 670-1444

Map Datum: NAD 83  
Projection: UTM (8 degree)  
Topographic Data Source: Land Information Ontario  
Mining Land Tenure Source: Provincial Mining Recorders' Office

This map may not show unregistered land tenure and interests in land including certain patents, leases, easements, right of ways, flooding rights, licences, or other forms of disposition of rights and interest from the Crown. Also certain land tenure and land uses that restrict or prohibit free entry to stake mining claims may not be illustrated.

## Property Tenure

2. 117821

Prospecting covered three unpatented mining claims recorded in good standing in the District of Kenora. The claims lie within the Dogpaw Lake Area (G- 2613) and are recorded in the name of Metalore Resources Limited (100%).

Claims are listed in Table 1.

<b>Table 1: Claims</b>			
CLAIM #	TOTAL DAYS	CLAIM #	TOTAL DAYS
K 1178822	3	K 1215870	0.5
K 1178821	1.5		
TOTAL DAYS: 5.0			

## Previous Work

Gold exploration has been ongoing in the Dogpaw Lake area since the 1890's. Recent exploration close to the property has included:

1997: Avalon Ventures Limited prospected and sampled on the northeast shore of Cedartree Lake on Claim 1178821 and obtain values > 1000 ppb.

1998: Avalon Ventures Limited conducted diamond drilling within 200 meters of the highest grab sample near the shore and intersected values in excess of 10g Au/2.5 m.

2002: Metalore Resources Limited completed a diamond drill program with at least two ddh's occurring within the same area drilled by Avalon on claim 1178821 and obtained values as significant or better than achieved by Avalon in their 1998 drill campaign.

## Personnel and Dates of Work

Both Carl Chilian and George Chilian conducted prospecting on claims K1178821, K1178822, and K1215870 from May 2 to May 7 2003. On Monday, May 5 Allan Raoul, MNM geologist of the Kenora office made a property visit to claim K 1239485.

## Property Geology and Observations

2 . 25 7 90

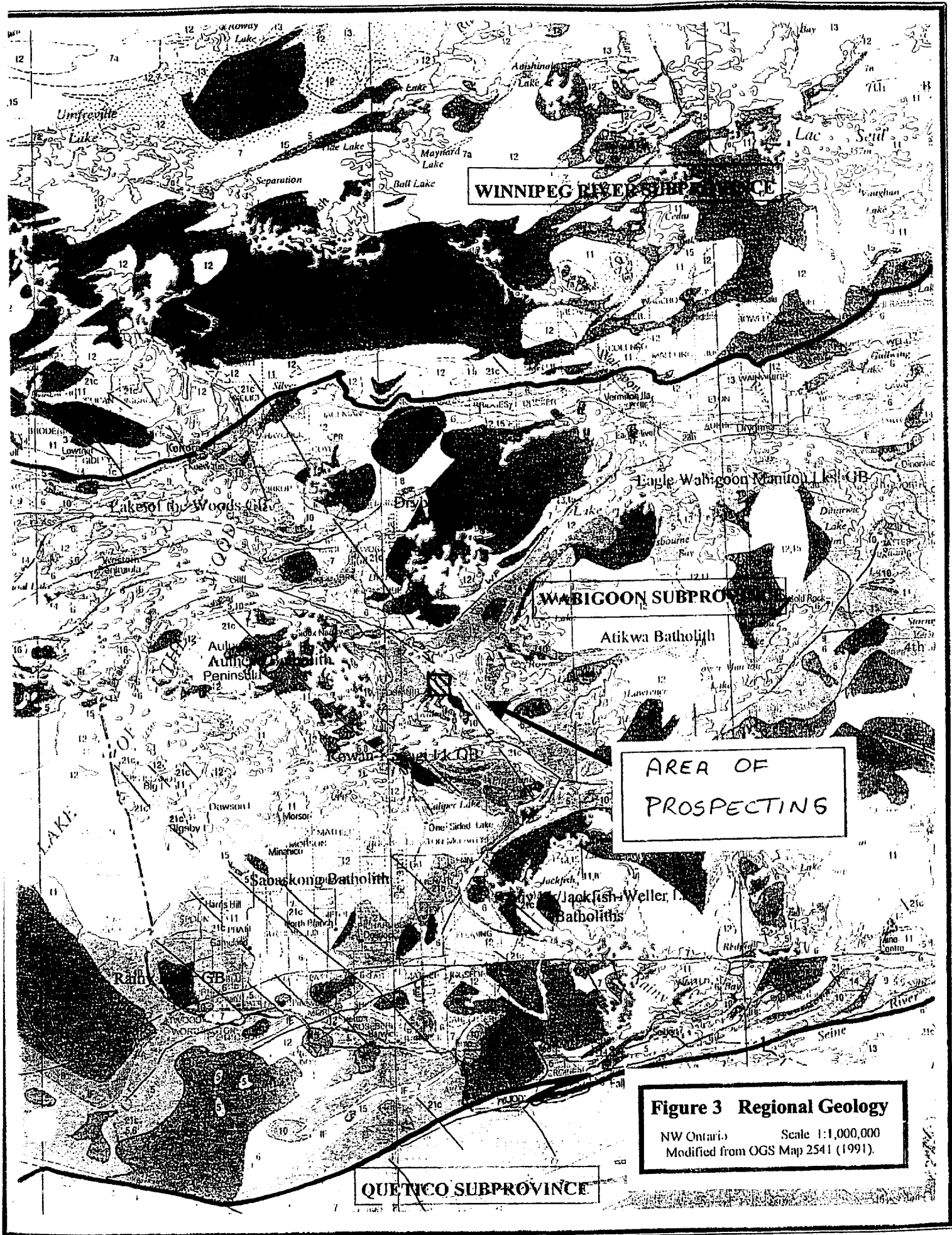
The claims occur within the Kakagi-Rowan Lakes greenstone belt, located on the western end of the Wabigoon Subprovince within the Superior Province of the Canadian Shield. The Wabigoon Subprovince is a granite-greenstone terrain between the gneissic terrains of the Quetico Subprovince to the South and the Winnipeg River Subprovince to the north (Figure 3). The lithologies in the Dogpaw Lake area are steeply dipping, Early Precambrian mafic metavolcanics overlain by a complex of intermediate to felsic metavolcanics, intruded by differentiated mafic to ultramafic sills, and have been folded into a major anticline and syncline with east-northeast trending vertical axial planes (Figure 4).

### Sampled Area

To the northwest of Sunfish Lake, most of the sampling was carried out along a chert horizon previously mapped in 1976. The chert horizon contains areas of fine grained pyrite which weather rusty and are easily identifiable. The chert horizon is mantled by felsic to intermediate tuff to the west and mafic to ultramafics to the east (Figure 5). It was noted during prospecting that the tuff horizon to the west had been mapped showing a gabbroic contact too far east, and on May 5, Allan Raoul of the Kenora office verified the findings of the prospecting team.

Sampling also occurred along the northeast and southwest areas of Hammer Head Point. To the south, a gossan zone was exposed due to low water levels and one sample (27932) was sent for assay.

All samples were assayed for platinum and palladium values due to the nature of the distinct layering of gabbroic intrusives in the area.



WINNIPEG RIVER SUBPROVINCE

WABIGOON SUBPROVINCE

AREA OF PROSPECTING

QUETICO SUBPROVINCE

**Figure 3 Regional Geology**

NW Ontario Scale 1:1,000,000  
 Modified from OGS Map 2541 (1991).





- PLEISTOCENE  
Sand, gravel, boulders, clay.
- UNCONFORMITY
- PRECAMBRIAN<sup>a</sup>**  
**MIDDLE TO LATE PRECAMBRIAN (PROTEROZOIC)**
- MAFIC INTRUSIVE ROCKS**
- 8 Diabase.
- INTRUSIVE CONTACT
- EARLY PRECAMBRIAN (ARCHEAN)**  
**LATE MAFIC DIKES**
- 7 Gabbro, diorite, lamprophyre.
- INTRUSIVE CONTACT
- FELSIC INTRUSIVE ROCKS**  
**LATE FELSIC INTRUSIVE ROCKS**
- 9a Foliated granodiorite.  
9b Massive granodiorite.  
9c Massive diorite.  
9d Inclusion-rich or contaminated diorite.
- INTRUSIVE CONTACT
- EARLY FELSIC INTRUSIVE ROCKS**
- 5a Granodiorite.  
5b Rhyolite porphyry.  
5c Quartz porphyry, quartz-feldspar porphyry.  
5d Fine-grained granodiorite and aplite.
- INTRUSIVE CONTACT
- MAFIC AND ULTRAMAFIC INTRUSIVE ROCKS**
- 4a Gabbro.  
4b Diorite, quartz gabbro.  
4c Anorthositic gabbro.  
4d Pyroxenite.  
4e Peridotite.  
4f Orthopyroxenite.
- INTRUSIVE CONTACT
- METAVOLCANICS AND METASEDIMENTS<sup>d</sup>**  
**METASEDIMENTS**
- 3a Volcanic sandstone.  
3b Volcanic conglomerate.  
3c Argillite.  
3d Chert.
- FELSIC TO INTERMEDIATE METAVOLCANICS**
- 2a Dacite.  
2b Porphyritic dacite.  
2c Rhyodacite.  
2d Tuff breccia.  
2e Lapilli tuff.  
2f Tuff.  
2g Ignimbrite.  
2h Spherulitic ash flows.
- MAFIC TO INTERMEDIATE METAVOLCANICS**
- 1a Andesite.  
1b Basalt.  
1c Coarse-grained basalt.  
1d Tuff breccia.  
1e Lapilli tuff.  
1f Tuff.  
1g Flow breccia, pillow breccia.  
1h Porphyritic andesite.  
1i Pillows.
- Breccia.
- Carbonized rock.
- Au Gold.  
cp Chalcopyrite.  
Cu Copper.  
Mo Molybdenum.  
q Quartz.  
S Sulphide mineralization.  
Zn Zinc.

<sup>a</sup>Unconsolidated deposits. Cenozoic deposits are represented by the lighter coloured parts of the map.

<sup>b</sup>Bedrock geology. Outcrops and inferred extensions of each map rock unit are shown respectively in deep and light tones of the same colour. Where in places a formation is too narrow to show colour and must be represented in black, a short black bar appears in the appropriate block.

<sup>c</sup>May be in part extrusive.

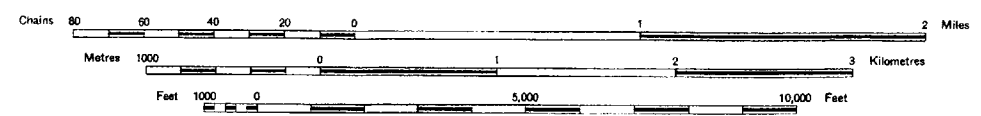
<sup>d</sup>Rocks in these groups are subdivided lithologically and the order does not imply age relationships within or among groups.

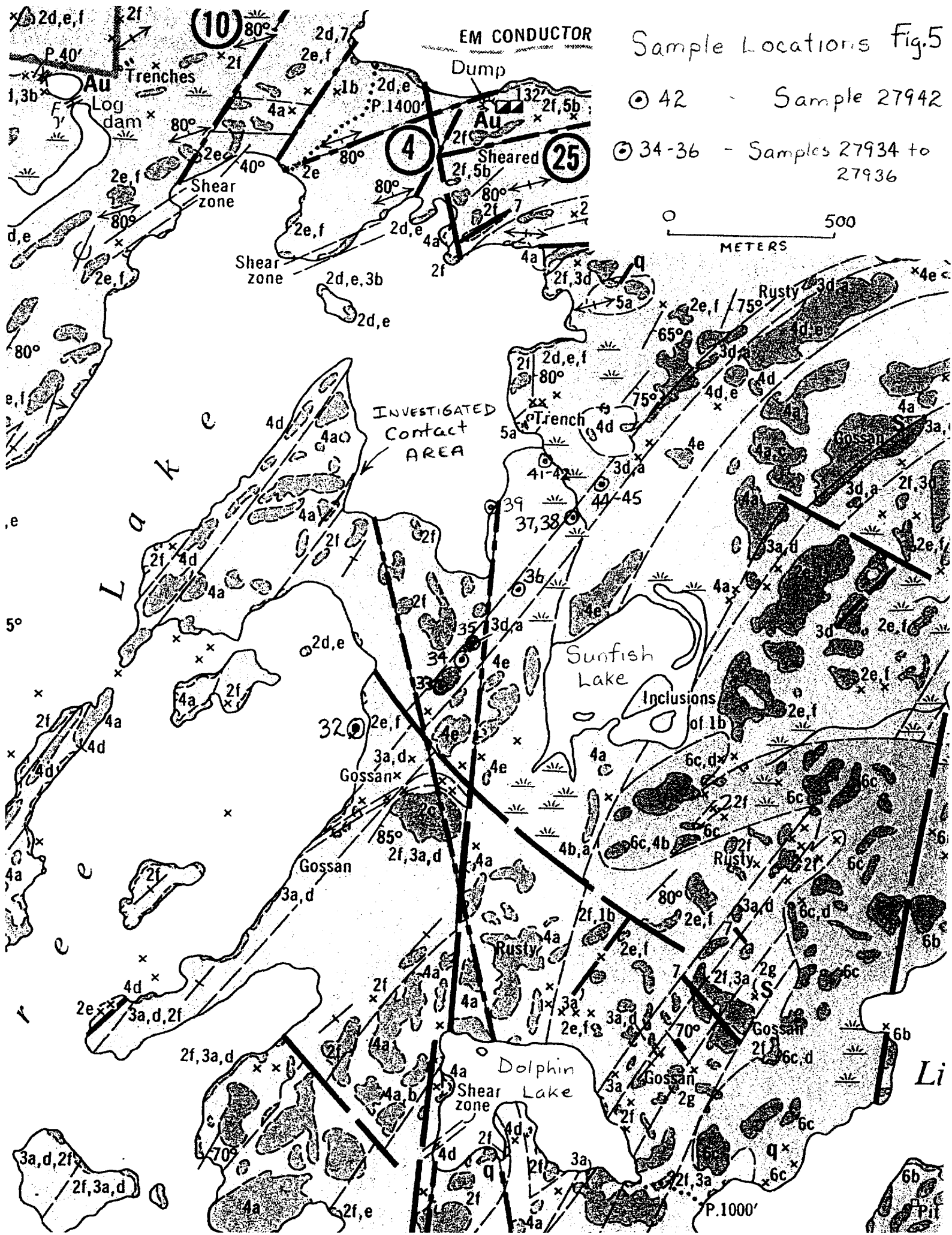
<sup>e</sup>May be in part intrusive.

(From Map 2319)  
**CEDARTREE LAKE**  
KENORA DISTRICT

AREA REPRESENTED  
BY  
FIGURE 5

Fig. 4





Sample Locations Fig.5

⊙ 42 - Sample 27942

⊙ 34-36 - Samples 27934 to 27936

0 500  
METERS

## Results And Recommendations

Samples taken during this time of prospecting sought to expand the known area of gold mineralization and test for the potential of platinum or palladium enrichment. While the results show that no platinum or palladium occurred in the samples assayed, further sampling needs to cover a larger area over the gabbroic intrusives.

One of the highest results from sample assays occurred from mineralized chert containing 1.5% very fine grained pyrite (27938) which yielded 0.024 oz Au/ ton. Other samples along the same horizon contained less pyrite (<1.5%) and yielded nil to 50 ppb Au. Although more sampling of the chert horizon may be warranted, the chert may just represent a layer of exsolution (pseudo-sediment) containing pyrite from lithological formation processes not related to the timing of the main gold mineralization.

Similar results were obtained from mineralized felsic tuff along the shore line (27939) which yielded 0.025 oz Au/ton. From previous sampling by Avalon Ventures Limited, the highest assay values occurred from samples of mineralized tuff in close proximity and at the contact of the granodioritic intrusive along the northeast corner of Cedartree Lake.

Although many other areas were sampled, only the gossan zone to the southwest of Hammer Head Point yielded any value whatsoever (27932 yielded 0.012 oz Au. ton).

Geologically, the vertical dipping contact between the gabbro (west) and felsic to intermediate tuffs (east) was observed to be more west (by up to 30 meters) than had been shown on the Cedartree Area Map 2319. There is no known significance to the contact and further investigation is necessary along all lithological contacts in the area to understand its relationship to gold mineralization. At the time of previous mapping (Map 2319) the lake levels were over one meter higher than in the past few years and consequently the contact areas near the shoreline are easier to distinguish.

In light of the many 'rusty' and 'gossan' notes on Map 2319 between Sunfish and Dolphin Lake, further prospecting/detailed geological mapping is warranted along the contact areas between the dioritic to granodioritic intrusive and the felsic to intermediate volcanic tuffs in the area. Previous drilling has yielded significant values in a similar environment to the northeast of Cedartree Lake.

2. 25790

**REFERENCES:**

Cambell, Ian. 1999. Report of Work, Dubenski Gold Project, Sioux Narrows, Ontario (Kenora Mining Division) for Avalon Ventures Limited.

Davies, J.C. and Morin J.A.,1976. Geology of the Cedartree Lake Area, District of Kenora; Ontario Division of Mines, GR134, 52p. Accompanied by Map 2319, scale 1:31 680.

Lengyel, Patrick. 1998. Summary of 1997 Summer Program, Flint Lake Gold Project. Sioux Narrows, Ontario for Avalon Ventures Limited.

Metalore Resources Limited, Six Month Progress Report., November 20, 2002 (filed under SEDAR).

2. 25. 7. 9.



Established 1928

# Swastika Laboratories Ltd

Assaying - Consulting - Representation

## Geochemical Analysis Certificate

3W-1748-RG1

Company: METALORE RESOURCES LTD

Date: MAY-30-03

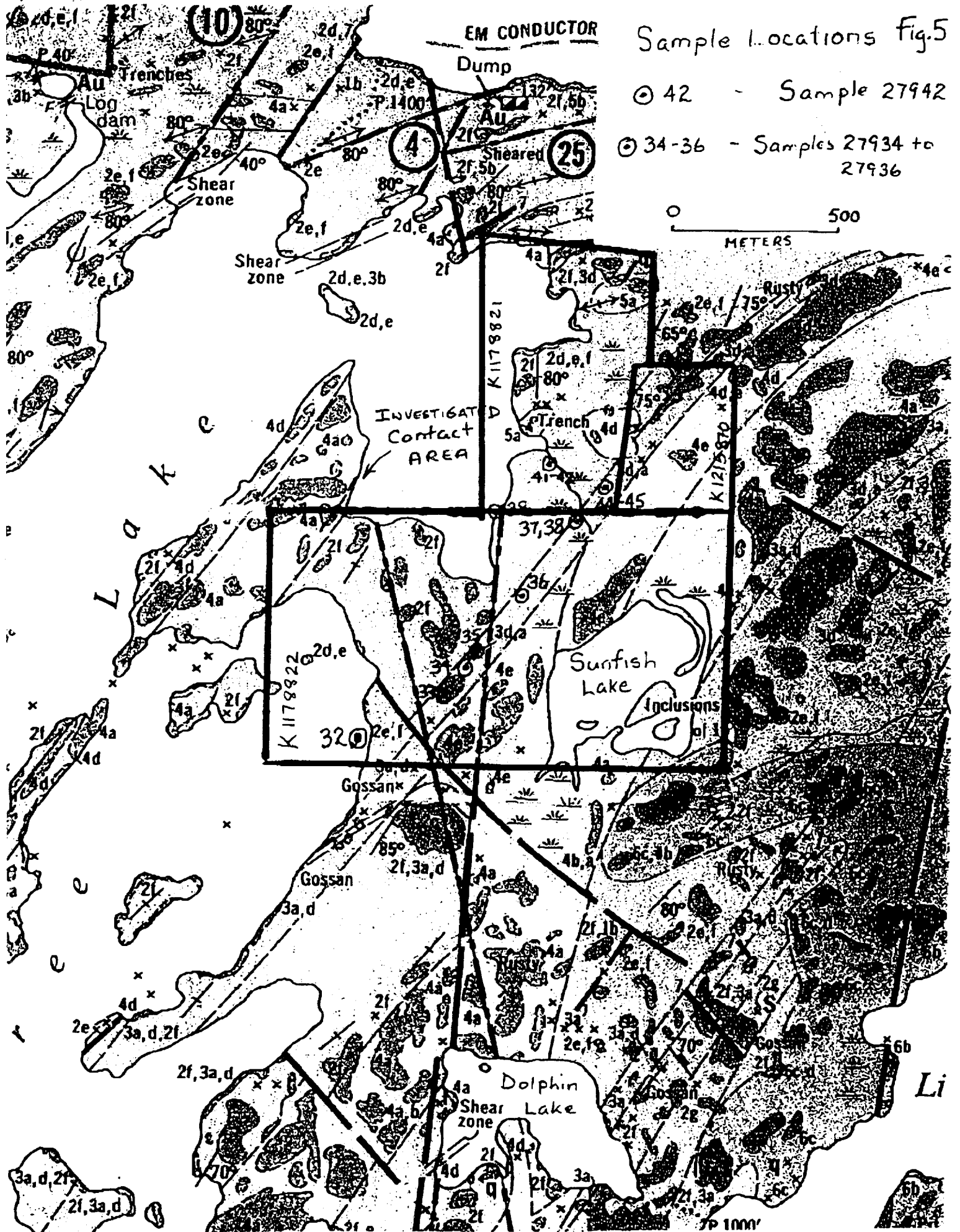
Project:

Attn: G. Chilian

We hereby certify the following Geochemical Analysis of 12 Rock samples submitted MAY-22-03 by .

Sample Number	Au Au Check		Au Au Check		Cu PPM	Ni PPM	Pt		Pd		Multi Elements
	PPD	PPD	oz/ton	oz/ton			PPM	oz/ton	PPM	oz/ton	
27932	417	398	0.012	0.012	-	-	-	-	-	-	Results
27933	34	-	0.001	-	244	-	<5	<0.001	<5	<0.001	to
27934	26	-	<0.001	-	-	33	<5	<0.001	<5	<0.001	follow
27935	3	-	<0.001	-	-	-	<5	<0.001	<5	<0.001	
27936	9	-	<0.001	-	-	-	-	-	-	-	
27937	87	96	0.003	0.003	-	-	-	-	-	-	
27938	826	859	0.024	0.025	-	-	-	-	-	-	
27939	847	-	0.025	-	-	-	-	-	-	-	
27941	2	-	<0.001	-	95	14	<5	<0.001	<5	<0.001	
27942	5	-	<0.001	-	-	37	<5	<0.001	<5	<0.001	
27944	Nil	-	<0.001	-	-	44	<5	<0.001	<5	<0.001	
27945	46	-	0.001	-	-	36	<5	<0.001	<5	<0.001	

Certified by



Sample locations Fig.5

⊙ 42 - Sample 27942

⊙ 34-36 - Samples 27934 to 27936





Ministry of  
Northern Development  
and Mines

Ministère du  
Développement du Nord  
et des Mines



Date: 2003-JUN-11

GEOSCIENCE ASSESSMENT OFFICE  
933 RAMSEY LAKE ROAD, 6th FLOOR  
SUDBURY, ONTARIO  
P3E 6B5

METALORE RESOURCES LIMITED  
717 NORFOLK STREET NORTH  
SIMCOE, ONTARIO  
M3Y 3R3 CANADA

Tel: (888) 415-9845  
Fax: (877) 670-1555

**Submission Number:** 2.25790  
**Transaction Number(s):** W0310.00980

Dear Sir or Madam

**Subject: Approval of Assessment Work**

We have approved your Assessment Work Submission with the above noted Transaction Number(s). The attached Work Report Summary indicates the results of the approval.

At the discretion of the Ministry, the assessment work performed on the mining lands noted in this work report may be subject to inspection and/or investigation at any time.

If you have any question regarding this correspondence, please contact STEVEN BENETEAU by email at [steve.beneteau@ndm.gov.on.ca](mailto:steve.beneteau@ndm.gov.on.ca) or by phone at (705) 670-5855.

Yours Sincerely,

A handwritten signature in black ink, appearing to read "Ron Gashinski".

Ron Gashinski  
Senior Manager, Mining Lands Section

**Cc:** Resident Geologist

Metalore Resources Limited  
(Claim Holder)

Assessment File Library

Metalore Resources Limited  
(Assessment Office)



52F05SW2016 2.25790 DOGPAW LAKE

200

ONTARIO CANADA

MINISTRY OF NORTHERN DEVELOPMENT AND MINES  
PROVINCIAL MINING RECORDERS' OFFICE

Mining Land Tenure Map

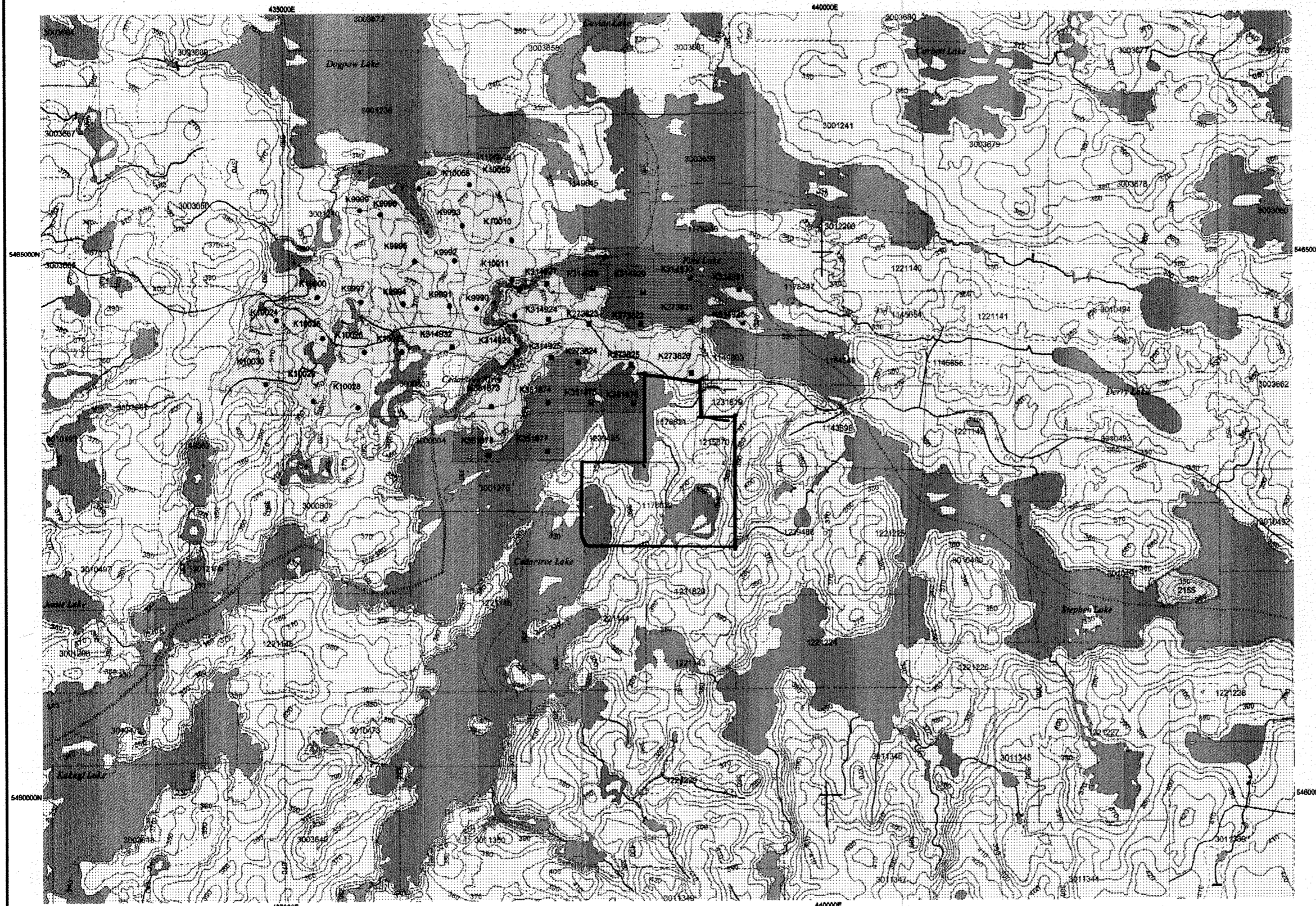
Date / Time of Issue: Wed Jul 02 10:22:01 EDT 2003

TOWNSHIP / AREA  
DOGPAW LAKE ARE

PLAN  
G-2613

ADMINISTRATIVE DISTRICTS / DIVISIONS

Mining Division: Kenora  
Land Titles/Registry Division: KENORA  
Ministry of Natural Resources District: KENORA

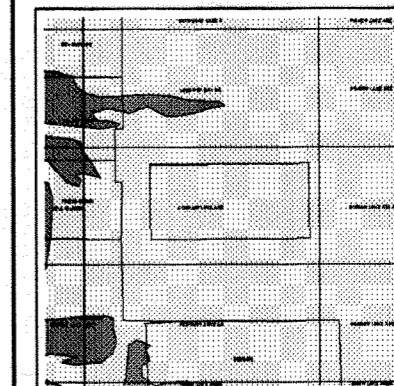


TOPOGRAPHIC

- Administrative Boundaries
Township
Concession, Lot
Provincial Park
Indian Reserve
Cliff, Pit & Pile
Contour
Mine Shafts
Mine Headframe
Railway
Road
Trail
Natural Gas Pipeline
Utilities
Tower

Land Tenure

- Freehold Patent
Surface And Mining Rights
Surface Rights Only
Mining Rights Only
Leasehold Patent
Surface And Mining Rights
Surface Rights Only
Mining Rights Only
Licence of Occupation
Uses Not Specified
Surface And Mining Rights
Surface Rights Only
Mining Rights Only
Land Use Permit
Order in Council (Not open for staking)
Water Power Lease Agreement



- Mining Claim
Filed Only Mining Claims
LAND TENURE WITHDRAWALS
Areas Withdrawn from Disposition
Mining Acts Withdrawal Types
Surface And Mining Rights Withdrawn
Surface Rights Only Withdrawn
Mining Rights Only Withdrawn
Order in Council Withdrawal Types
Surface And Mining Rights Withdrawn
Surface Rights Only Withdrawn
Mining Rights Only Withdrawn
IMPORTANT NOTICE



LAND TENURE WITHDRAWAL DESCRIPTIONS

Table with columns: Identifier, Type, Date, Description. Row 1: 2155, Wsm, Jan 1, 2001, W20/82 MAR 1/72 M&S 162473

2.25790
PROSP
ASSAY

Those wishing to stake mining claims should consult with the Provincial Mining Recorders' Office of the Ministry of Northern Development and Mines for additional information on the status of the lands shown hereon.

General Information and Limitations

Contact Information: Provincial Mining Recorders' Office, Willow Green Miller Centre 933 Ramsey Lake Road, Sudbury ON P3E 8B5

Toll Free Tel: 1 (888) 415-8845 ext 578 Fax: 1 (877) 870-1444

Map Datum: NAD 83 Projection: UTM (8 degree) Topographic Data Source: Land Information Ontario Mining Land Tenure Source: Provincial Mining Recorders' Office

This map may not show unregistered land tenure and interests in land including certain patents, leases, easements, right of ways, flooding rights, licences, or other forms of disposition of rights and interest from the Crown.

The information shown is derived from digital data available in the Provincial Mining Recorders' Office at the time of downloading from the Ministry of Northern Development and Mines web site

Home Page: www.mndm.gov.on.ca/MNDM/MINESLANDS/mismpgpe.htm