

# Final Report



52F09SE0028 63.5827 HODGSON

010

Nov 20/70

## Location & Access:

The property is located twenty-two (22) miles west of the town of Squace, in the Township of Noddyson, District of Kenora. Access is gained by road, (Highway 17) to the ten (10) claims in the project.

## Geology:

Please see J. Hamilton's detailed Geological Map & Report. (J. Hamilton being co-owner of claims.)

## Work Done:

Extensive and detailed prospecting with stripping was carried out on all parts of the property. Old trenches and pits were cleaned out and one hundred (100) samples taken were promising areas were observed.

A grid was also cut on the property. A Base line and lines of four hundred (400') foot spacing were cut for a total of nine (9) miles.

OP90-241

## Results & Recommendations:

The results of extensive prospecting, sampling, and assaying did not find anything of importance.

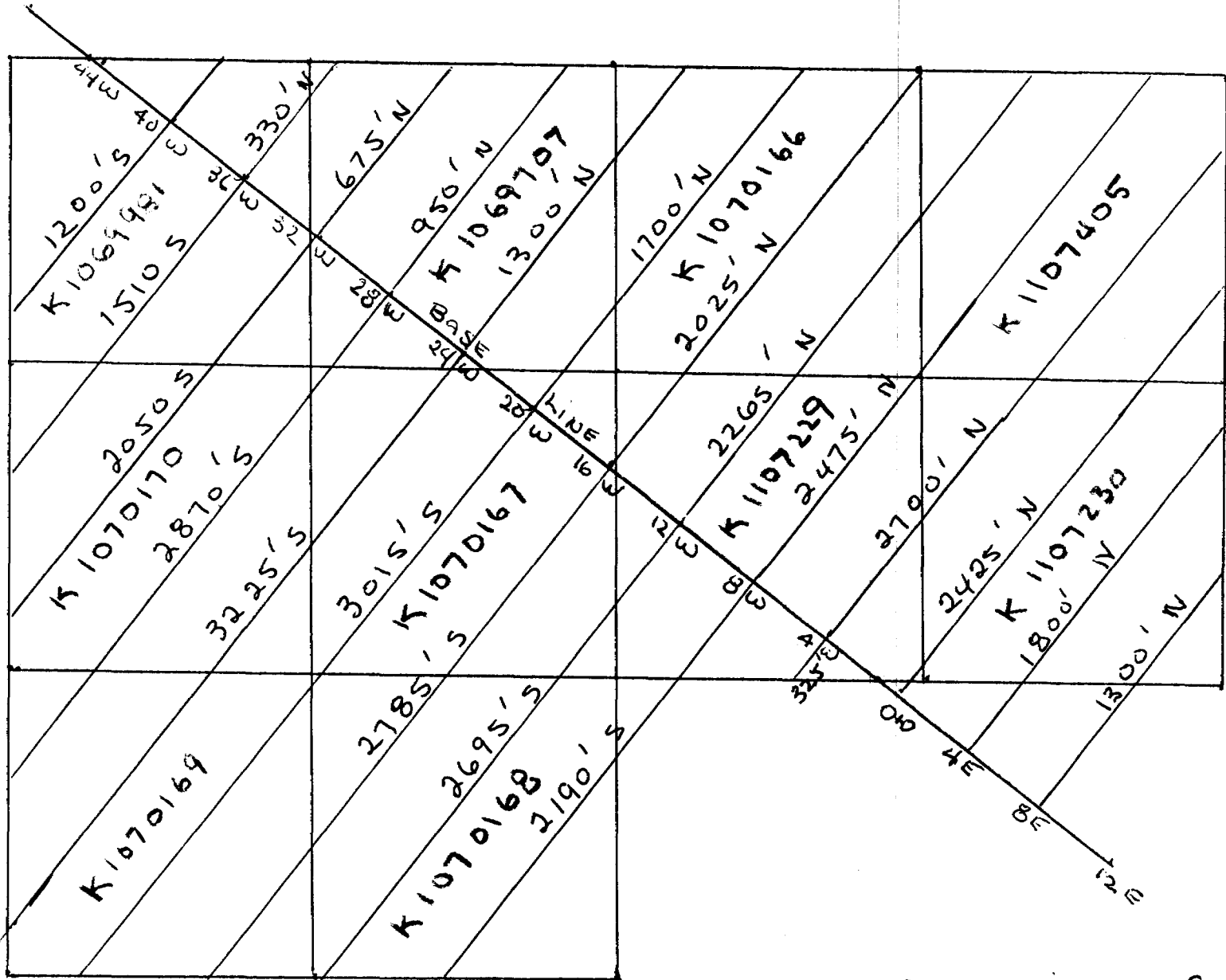
Old newspaper clippings & reports from the District office in Kenora proved to be false.

It is the writer's opinion that a stock promotion was being attempted and false information was being fed to local newspapers in the late 1890's.

Recommendations are that after a thorough season of prospecting, assaying & mapping that no more work or money be spent on these claims.

Ferry Strickland  
Prospector.

HODGSON TWP.



GRID LINES CUT = 8.979 MILES  
 BLACK FOX IGNACE PROJECT. 1" = 660'  
 SEE ATTACHED MAP FOR ACTUAL SIZE OF CLAIMS

1300' S

Actual configuration of claims.

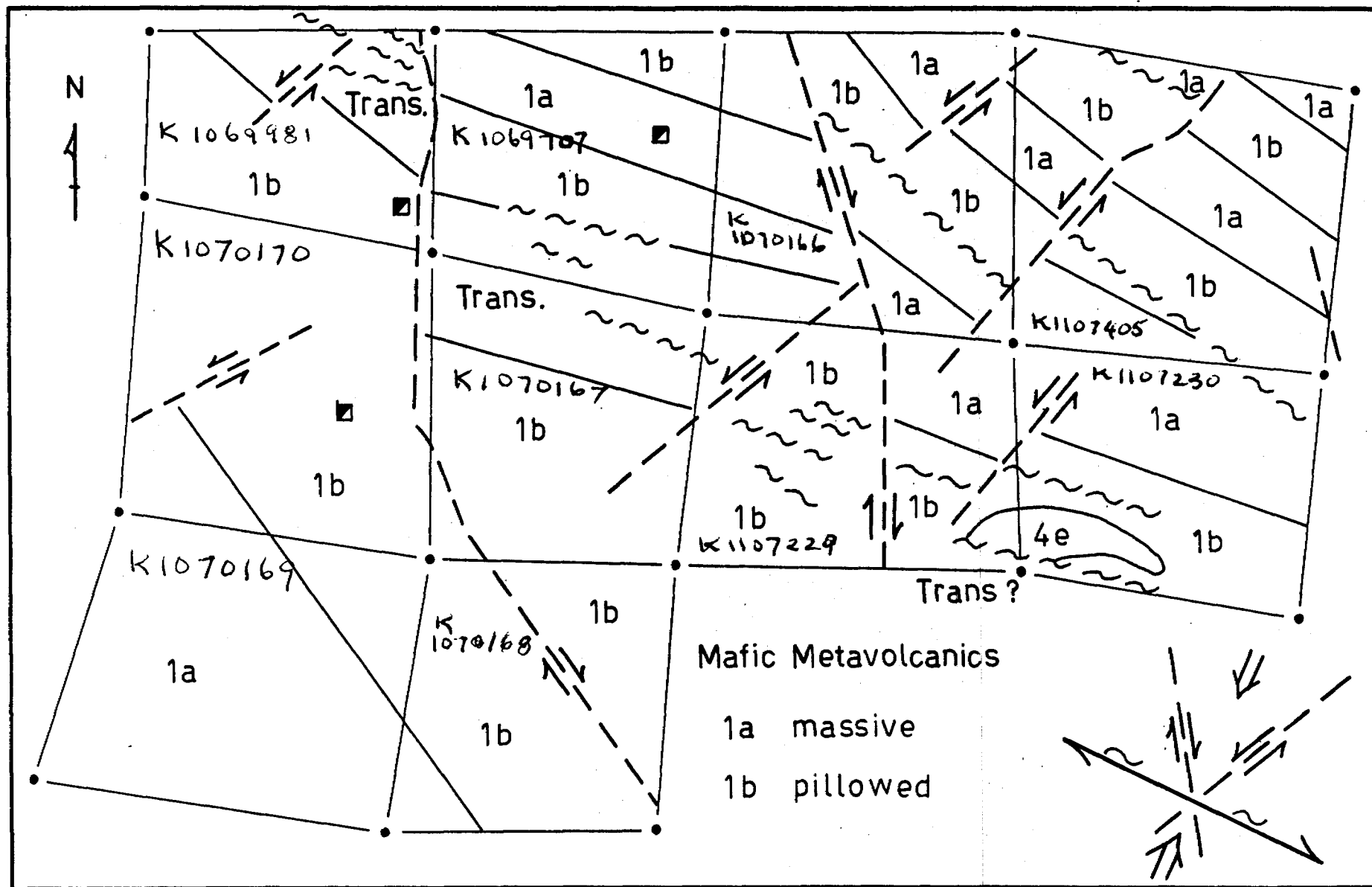


Figure 2. Structural geometry of the Black Fox claims

# Description of Samples

Sample No.	Type of Sample	Rock Type	Mineralization	ASSAY (CERTIFICATES ATTACHED)
1.	GRAB	QUARTZ	Py.	TRACE
2.	GRAB	BASALT	Po.	TRACE
3.	GRAB	QUARTZ	Py. Po.	TRACE
4.	GRAB	QUARTZ	Py.	TRACE.
5.	GRAB.	QUARTZ ALTERED	BASALT. Po. Py.	TRACE.
6.	GRAB.	QUARTZ BASALT.	Po. Py.	TRACE
7.	GRAB	QUARTZ	Py	TRACE
8.	GRAB	ALTERED BASALT. QUARTZ	Po. Py	TRACE
9.	GRAB	QUARTZ, SERICITE	Py	TRACE
10.	GRAB.	QUARTZ	Py. Cu.	TRACE
11.	GRAB	QUARTZ	Py.	TRACE.
12.	GRAB	QUARTZ	Py.	TRACE
13.	GRAB.	QUARTZ	Py.	TRACE.
14.	GRAB.	QUARTZ	Py. Po.	TRACE.
15.	GRAB.	QUARTZ	Py.	TRACE.
16.	GRAB.	QUARTZ	Py. Po.	TRACE.
17.	GRAB	QUARTZ	Py. Cu	TRACE
18.	GRAB.	QUARTZ	Py. Po.	TRACE.
19.	GRAB	QUARTZ (RUSTY)	—	TRACE.
20.	GRAB.	QUARTZ	Py	TRACE.
21.	GRAB.	QUARTZ	Py	TRACE.
22.	GRAB.	QUARTZ	Po.	TRACE.
23.	GRAB.	QUARTZ	Po.	TRACE.
24.	GRAB	QUARTZ	Po.	TRACE.
25.	GRAB.	QUARTZ	Po.	TRACE.
26.	GRAB	QUARTZ	Py.	TRACE
27.	GRAB.	QUARTZ	Po. Py	TRACE
28.	GRAB	QUARTZ (VERY RUSTY)	Py. Po.	TRACE.

Sample No	Type of sample	Rock Type	Mineralization	Assay
29.	GRAB	BASALT & QUARTZ	Po.	TRACE
30.	GRAB	QUARTZ	Po.	TRACE
31.	GRAB	ALTERED BASALT. QUARTZ SERICITE	Po. Py	TRACE
32.	GRAB	RUSTY QUARTZ	—	TRACE
33.	GRAB	RUSTY QUARTZ		TRACE
34.	GRAB	SHEAR, QUARTZ	Po.	TRACE
35.	GRAB	QUARTZ	Po.	TRACE
36.	GRAB	QUARTZ	Po.	TRACE
37.	GRAB	ALTERED BASALT, QUARTZ	Po.	TRACE
38.	GRAB	QUARTZ	Po. Py.	TRACE
39.	GRAB	QUARTZ CARBONATE	Po. Py. Po. Cu.	TRACE
40.	GRAB	QUARTZ CARBONATE	Po. Py.	TRACE
41.	GRAB	QUARTZ	Po. Py.	TRACE
42.	GRAB	QUARTZ	Po. Py.	TRACE
43.	GRAB	QUARTZ	Po. Py.	TRACE
44.	GRAB	QUARTZ, SERICITE	Po. Py. Cu.	TRACE
45.	GRAB	QUARTZ SERICITE	Po. Py.	TRACE
46.	GRAB	BASALT, QUARTZ	Po. Py.	TRACE
47.	GRAB	ALTERED BASALT, QUARTZ	Py. Po.	TRACE
48.	GRAB	QUARTZ	Po.	TRACE
49.	GRAB	QUARTZ	Po.	TRACE
50.	GRAB	QUARTZ	Po.	TRACE
51.	GRAB	QUARTZ	Po.	TRACE
52.	GRAB	QUARTZ	Po.	TRACE
53.	GRAB	BASALT, QUARTZ	Po.	TRACE
54.	GRAB	RUSTY QUARTZ		TRACE
55.	GRAB	BASALT.	Py. Po.	TRACE
56.	GRAB	QUARTZ	Po.	TRACE
57.	GRAB	BASALT. GREEN QUARTZ	Po.	TRACE

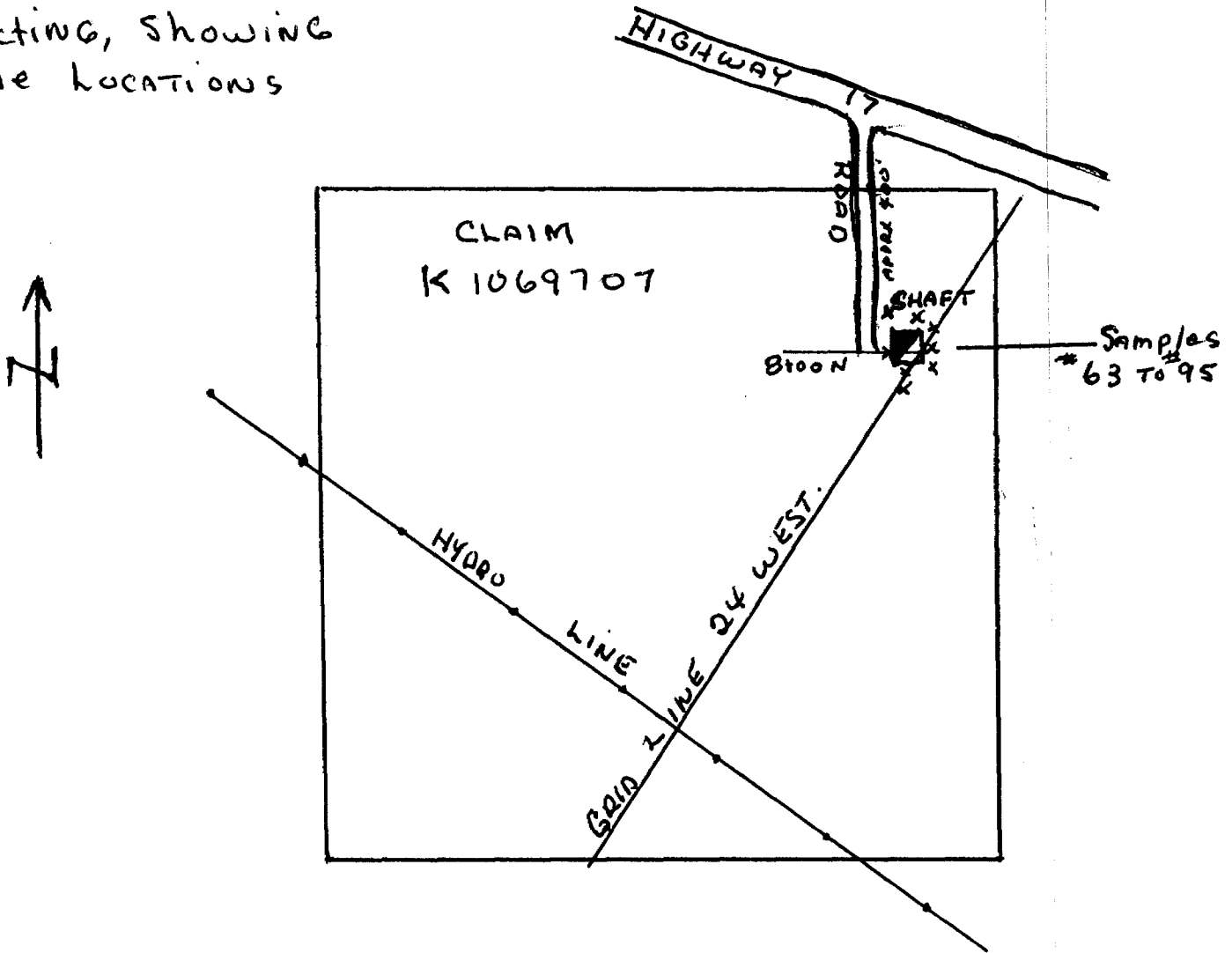
<u>Sample No</u>	<u>Type of Sample</u>	<u>Rock Type</u>	<u>Mineralization</u>	<u>Assay</u>
58.	Grab	Quartz	Po. Cu.	Trace
59.	Grab	Quartz (GREEN)	Po. Py.	Trace
60.	GRAB	Quartz	Po. Py.	Trace
61.	GRAB.	Quartz	Py.	Trace.
62.	GRAB	Quartz	Py.	Trace.
63.	GRAB	Quartz-Hornblende	Po.	Trace
64.	GRAB	Quartz-Hornblende	Po.	Trace
65.	GRAB.	Quartz-Hornblende	Po.	Trace
66.	GRAB	Quartz-Hornblende	Po.	Trace
67.	GRAB.	Quartz	—	Trace.
68.	GRAB.	Quartz	Po.	Trace
69.	GRAB.	Quartz	Py (BRIGHT BRASSY)	Trace
70.	GRAB	Quartz	Py. Po.	Trace.
71.	GRAB	Quartz Hornblende	Po.	Trace.
72.	GRAB	Quartz	Po.	Trace
73.	GRAB	Quartz	Py. Po.	Trace
74.	GRAB.	Quartz-Chlorides	Po.	Trace.
75.	GRAB.	Quartz	—	Trace.
76.	GRAB.	Rusty Quartz	—	Trace.
77.	GRAB.	Quartz-Sheared Basalt.	Py. Po.	Trace.
78.	GRAB.	Quartz Sheared Basalt.	Po. Py.	Trace
79.	GRAB.	Quartz-Hornblende	Po. Py.	Trace
80.	GRAB.	Quartz-Hornblende	Po. Py.	Trace
81.	GRAB.	Quartz	Py. Po.	Trace.
82.	GRAB.	Quartz	Po. Py.	Trace.
83.	GRAB.	Quartz	Po. Py.	Trace
84.	GRAB.	Rusty Quartz	Py. Po.	Trace.
85.	GRAB.	Basalt-Quartz	Py. Po. Cu.	Trace.
86.	GRAB.	Basalt-Quartz	Py. Po. Cu.	Trace.

4/11

Sample No.	Type of Sample	Rock Type	Mineralization	Assay
87.	GRAB.	QUARTZ	Po.	TRACE
88.	GRAB.	QUARTZ	Po.	TRACE.
89.	GRAB.	QUARTZ	Po.	TRACE
90.	GRAB	Quartz with Chlorides	Po. Py.	TRACE
91.	GRAB.	QUARTZ & HORNBLLENDE	Py	TRACE
92.	GRAB	QUARTZ & HORNBLLENDE	Po. Py.	TRACE
93.	GRAB.	QUARTZ & HORNBLLENDE	Py Po.	TRACE.
94.	GRAB.	QUARTZ	Py Po. Cu	TRACE.
95.	GRAB.	QUARTZ	Py	TRACE.
96.	GRAB.	QUARTZ	Py. Po.	TRACE
97.	GRAB	QUARTZ	Py	TRACE.
98.	GRAB.	QUARTZ	Po.	TRACE.
99.	GRAB.	QUARTZ	Po.	TRACE.
100.	GRAB	QUARTZ	Po.	TRACE.



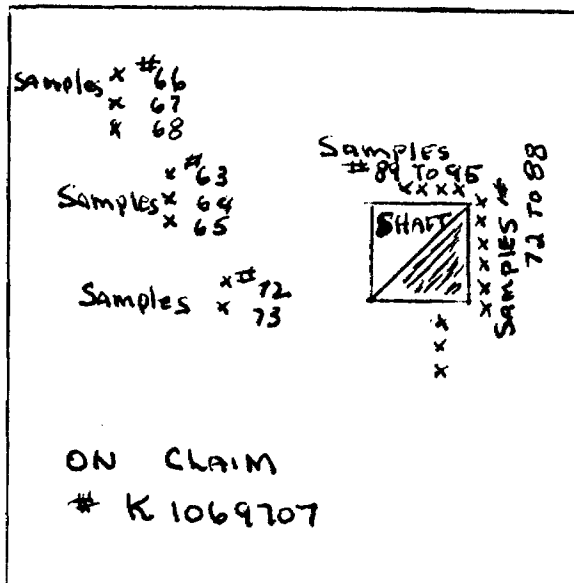
Location Map of  
Prospecting, showing  
Sample Locations



1" = 330'

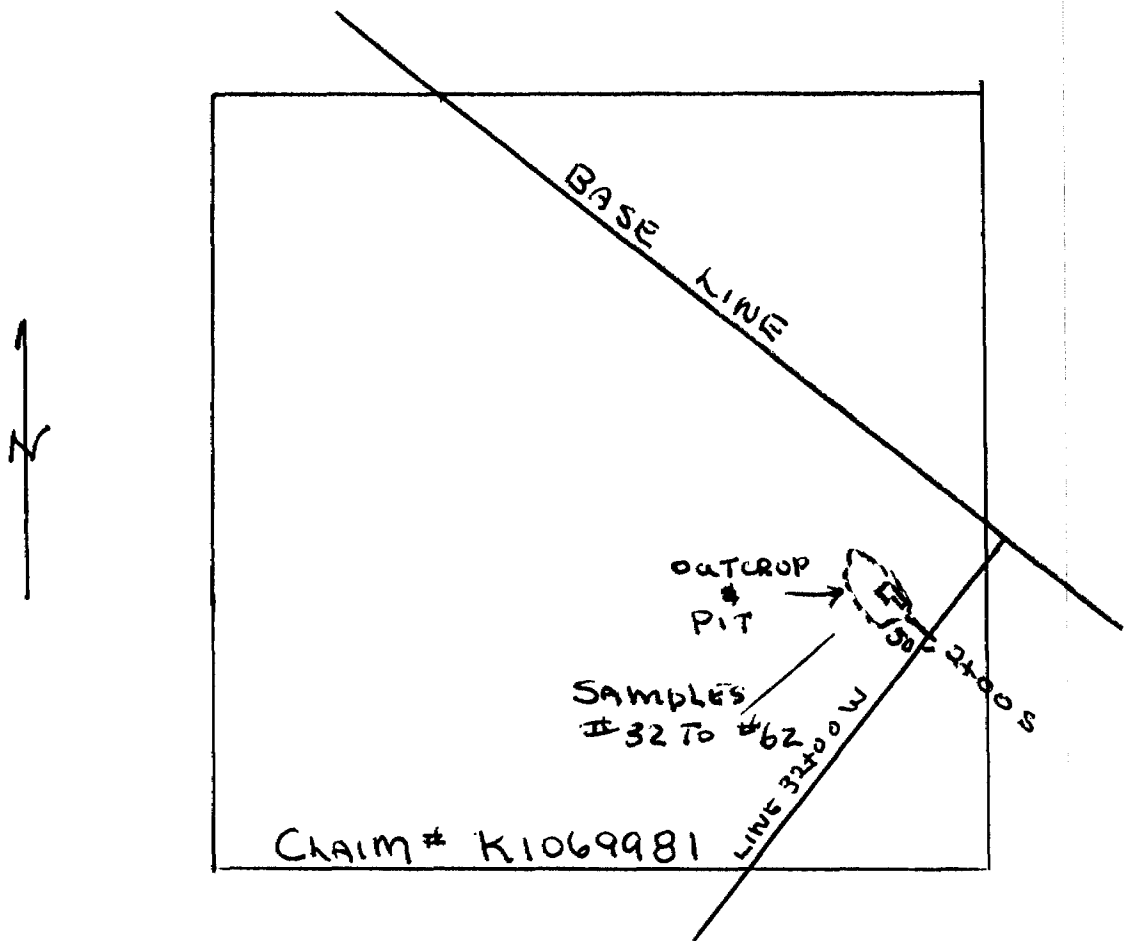
See J. Hamilton's GEOLOGICAL  
MAP FOR EXACT LOCATION.

SKETCH OF STRIPPING  
AND SAMPLING AROUND  
BLACK FOX SHAFT.



SCALE 1" = 10'  
SAMPLES # 63 TO # 95

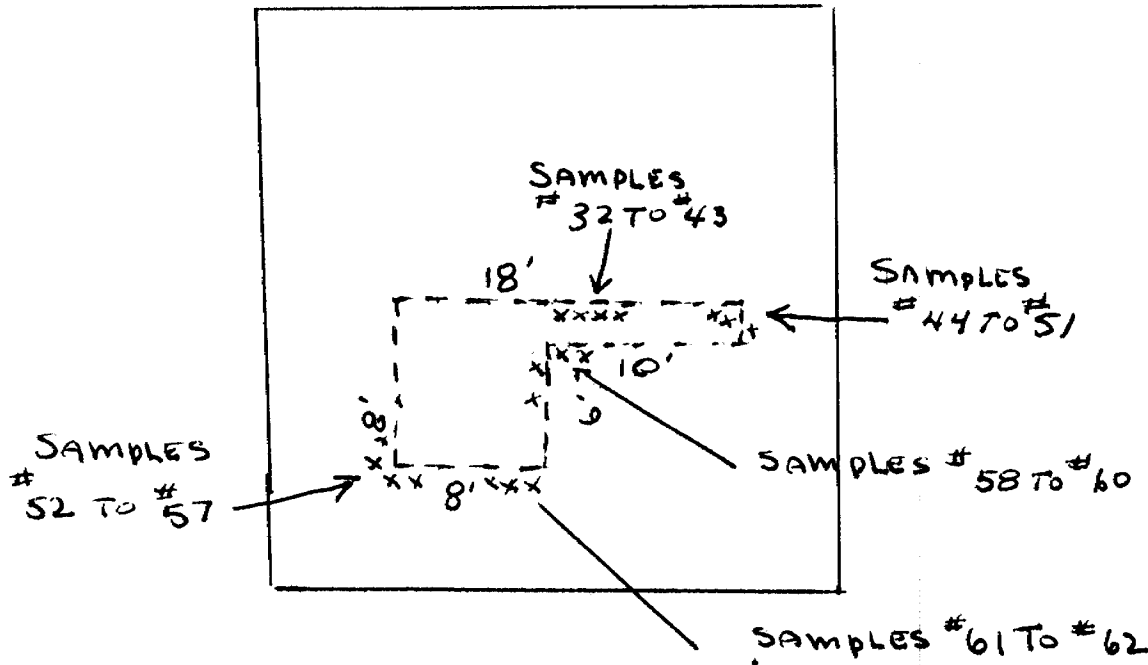
LOCATION MAP OF  
PROSPECTING, SHOWING  
SAMPLE LOCATIONS



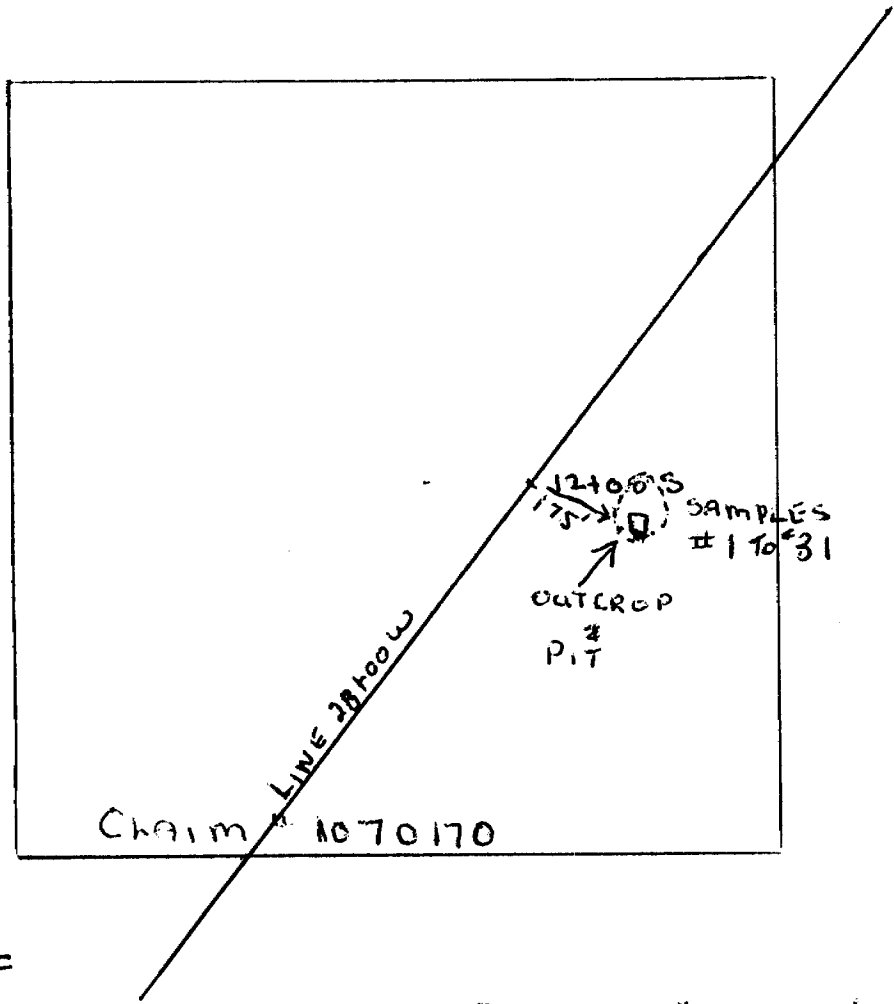
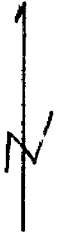
SCALE 1" = 330'

SEE J. HAMILTON'S GEOLOGICAL MAP  
FOR MORE DETAIL.

SKETCH OF TRENCHES & SAMPLING



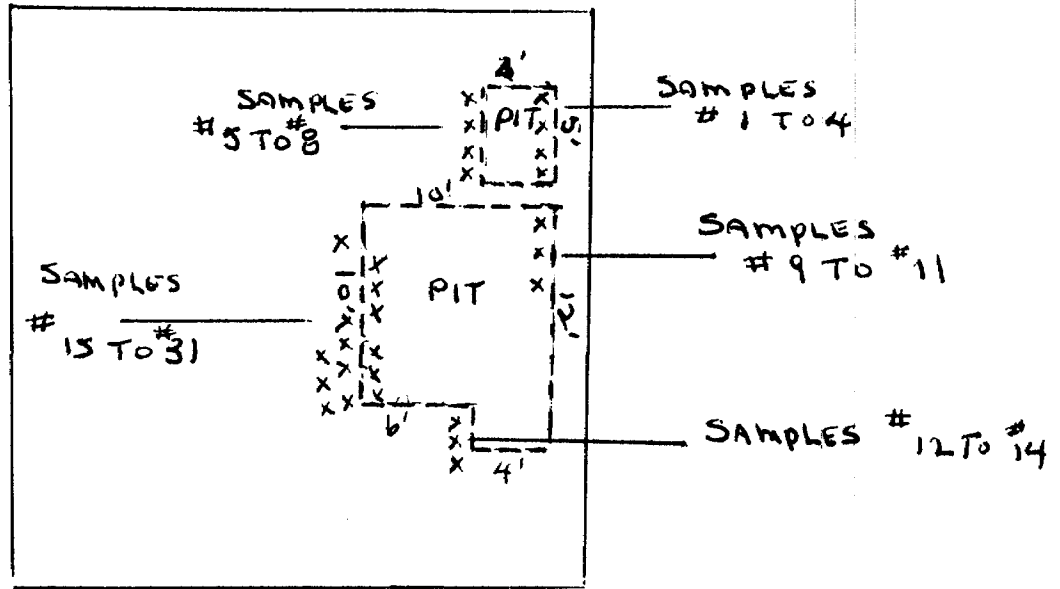
SCALE 1" = 10'  
SAMPLES # 32 TO # 62  
Jumbo PIT # 2.  
ON CLAIM K.1069981



LOCATION MAP OF  
PROSPECTING, SHOWING  
SAMPLE LOCATIONS

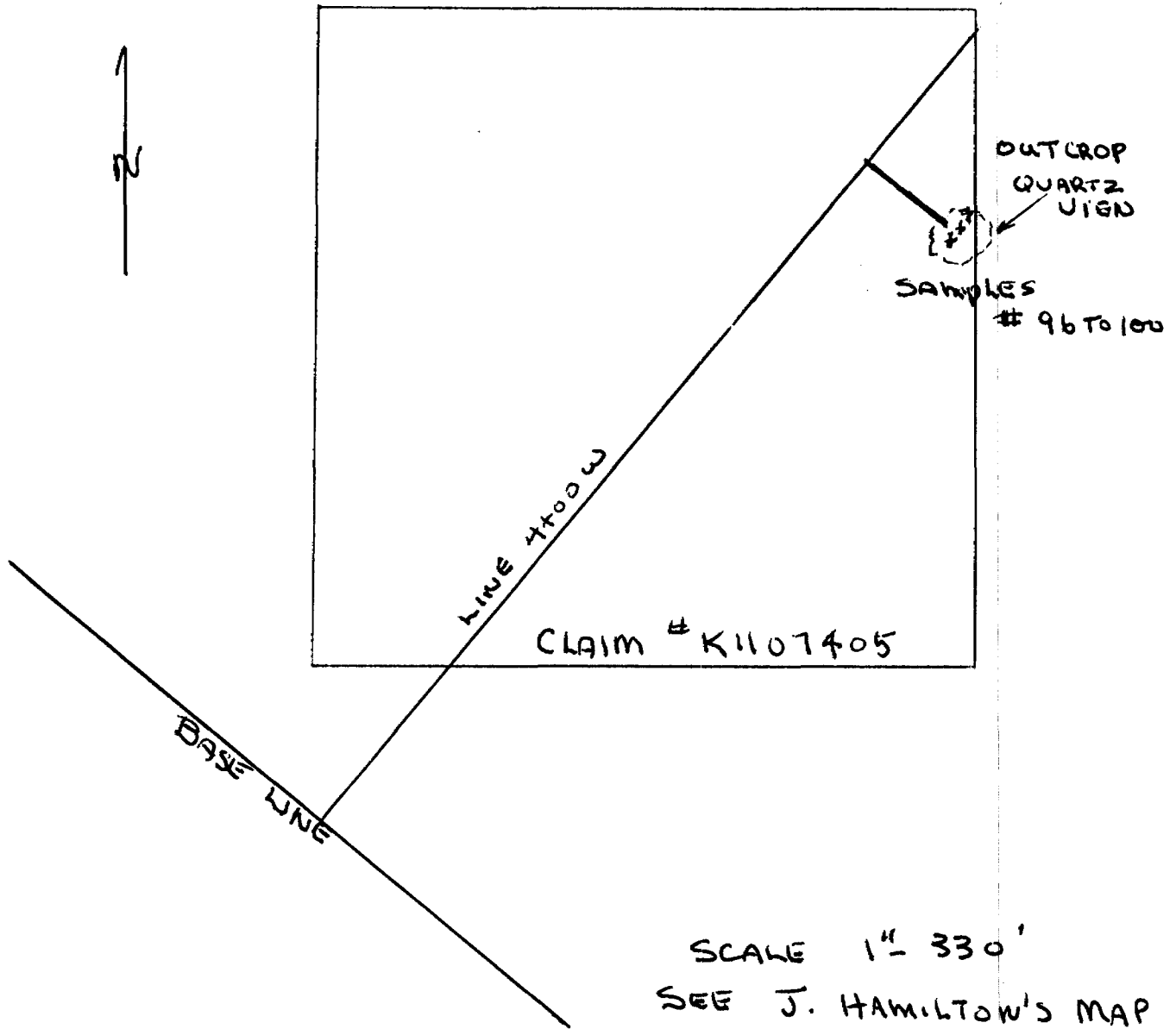
SCALE 1" = 330'  
See J. Hamilton's MAP  
FOR MORE DETAIL.

AREA OF SAMPLING  
ON CLAIM # K1070170

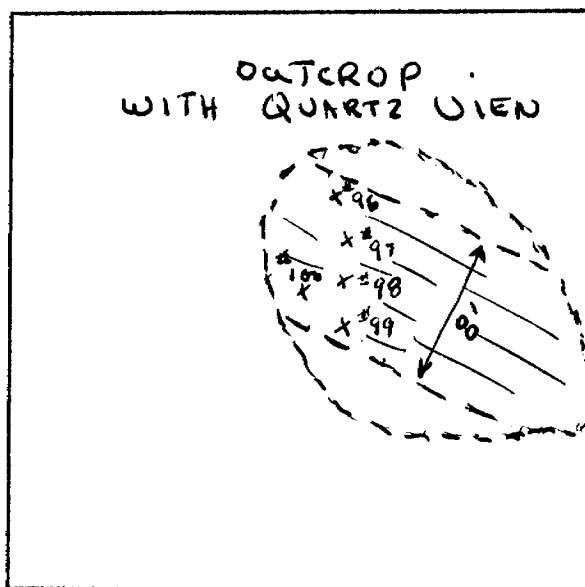


SCALE 1" = 10'  
SAMPLES # 1 TO # 31 ON JUMBO PIT. # 1

LOCATION MAP OF PROSPECTING,  
SHOWING SAMPLE LOCATIONS.

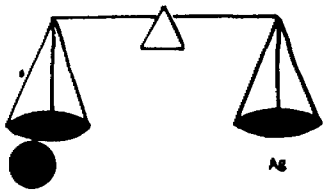


AREA OF SAMPLING  
ON CHAIN # K 1107405



SCALE 1" = 10'  
SAMPLES # 96 - 100 ON QUARTZ VEIN





# PAUL'S CUSTOM FIRE ASSAYING LTD.

Phone: Bus. (807) 662-8171

Res. (807) 662-3361

Fax: (807) 662-1155

PAUL OKANSKI, Assayer  
Box 253, Cochenour, Ontario POV 1L0

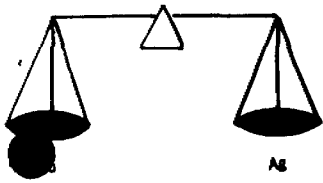
## ASSAY CERTIFICATE

Date: Sept. 18, 1990.

G. STRILCHUK

	Sample No.	Description	oz/ton Au	oz/ton Ag
1	#1		Trace	NIL
2	2		"	"
3	3		"	"
4	4		"	"
5	5		"	"
6	6		"	"
7	7		"	"
8	8		"	"
9	9		"	"
10	10		"	"
11	11		"	"
12	12		"	"
13	13		"	"
14	14		"	"
15	15		"	"
16	16		"	"
17	17		"	"
18	18		"	"
19	19		"	"
20	20		"	"
21	21		"	"
22	22		"	"
23	23		"	"
24	24		"	"
25	25		"	"

Assayer: \_\_\_\_\_



# PAUL'S CUSTOM FIRE ASSAYING LTD.

Phone: Bus. (807) 662-8171

Res. (807) 662-3361

Fax: (807) 662-1155

PAUL OKANSKI, Assayer  
Box 253, Cochenour, Ontario POV 1L0

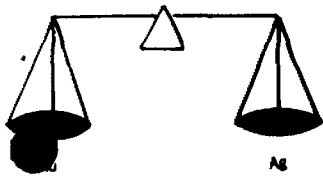
## ASSAY CERTIFICATE

Date: Sept. 18, 1990.

G. STRILCHUK

	Sample No.	Description	oz/ton Au	oz/ton Ag
1	#25		Trace	NIL
2	27		"	"
3	28		"	"
4	29		"	"
5	30		"	"
6	31		"	"
7	32		"	"
8	33		"	"
9	34		"	"
10	35		"	"
11	36		"	"
12	37		"	"
13	38		"	"
14	39		"	"
15	40		"	"
16	41		"	"
17	42		"	"
18	43		"	"
19	44		"	"
20	45		"	"
21	46		"	"
22	47		"	"
23	48		"	"
24	49		"	"
25	50		"	"

Assayer: \_\_\_\_\_



# PAUL'S CUSTOM FIRE ASSAYING LTD.

Phone: Bus. (807) 662-8171

Res. (807) 662-3361

Fax: (807) 662-1155

PAUL OKANSKI, Assayer  
Box 253, Cochenour, Ontario POV 1L0

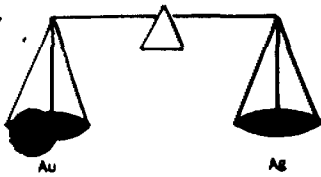
G. STRILCHUK

## ASSAY CERTIFICATE

Date: Sept. 18, 1990.

	Sample No.	Description	oz/ton Au	oz/ton Ag
1	#51		Trace	NIL
2	52		"	"
3	53		"	"
4	54		"	"
5	55		"	"
6	56		"	"
7	57		"	"
8	58		"	"
9	59		"	"
10	60		"	"
11	61		"	"
12	62		"	"
13	63		"	"
14	64		"	"
15	65		"	"
16	66		"	"
17	67		"	"
18	68		"	"
19	69		"	"
20	70		"	"
21	71		"	"
22	72		"	"
23	<del>50x</del>			
24				
25				

Assayer: \_\_\_\_\_



# PAUL'S CUSTOM FIRE ASSAYING LTD.

Phone: Bus. (807) 662-8171

Res. (807) 662-3361

Fax: (807) 662-1155

PAUL OKANSKI, Assayer  
Box 253, Cochenour, Ontario POV 1L0

## ASSAY CERTIFICATE

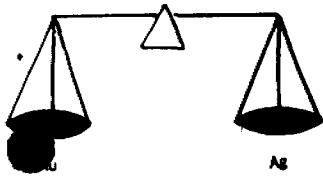
Date: Sept. 18, 1990.

G. STRILCHUK

	Sample No.	Description	oz/ton Au	oz/ton Ag
1	#73		Trace	NIL
2	74		"	"
3	75		"	"
4	76		"	"
5	77		"	"
6	78		"	"
7	79		"	"
8	80		"	"
9	81		"	"
10	82		"	"
11	83		"	"
12	84		"	"
13	85		"	"
14	86		"	"
15	87		"	"
16	88		"	"
17	89		"	"
18	90		"	"
19	91		"	"
20	92		"	"
21	93		"	"
22	94		"	"
23	95		"	"
24	96		"	"
25	97		"	"

Assayer:

A handwritten signature in black ink, appearing to read 'Paul Okanski', written over a horizontal line.



# PAUL'S CUSTOM FIRE ASSAYING LTD.

Phone: Bus. (807) 662-8171

Res. (807) 662-3361

Fax: (807) 662-1155

PAUL OKANSKI, Assayer  
Box 253, Cochenour, Ontario POV 1L0

## ASSAY CERTIFICATE

Date: Sept. 18, 1990.

G. STRILCHUK

Sample No.	Description	oz/ton Au	oz/ton Ag
1	#98	Trace	NIL
2	99	"	"
3	100	"	"
4		X	
5		X	
6			
7			
8			
9			
10			
11			
12			
13			
14			
15			
16			
17			
18			
19			
20			
21			
22			
23			
24			
25			

Assayer: