



52F09SW0011 12 REVELL

010

DIAMOND DRILLING

Township: Revell

Report No: 12

WORK PERFORMED FOR: G. L. Pidgeon

RECORDED HOLDER: SAME AS ABOVE [x]

: OTHER []

<u>CLAIM NO.</u>	<u>HOLE NO.</u>	<u>FOOTAGE</u>	<u>DATE</u>	<u>NOTE</u>
K 39003	1	175'	Mar-Apr/67	(1)
	2	165'	"	(1)
	3	185'	"	(1)
	4	183'	"	(1)
	5	235'	"	(1)
	6	215'	"	(1)
	7	168'	"	(1)
	8	125'	"	(1)

812/151'

NOTES: (1) Received via Kenora Resident Geologist from the Mining Recorders Cancelled Claims - Dec/86

G. L. PIDGEON. DIAMOND DRILL LOG

PROPERTY Perell Turpi CASING 15.5 HOLE NO. 3
 LOCATION STATION 400C EAST 10 NORTH 130 CORE SIZE AxT ELEVATION 0
 LOGGED BY S. K. Prigen BEARING SOUTH 20° WEST
 DATE March & April 1967 DIP 45°

FROM	TO	DESCRIPTION
0	15.5	Casing
15.5	100	Amphibolite brecciated
100	109	" slightly mineralized Calc. P.
109	111	" sheared
111	116	" fine grained
116	123	" sheared
123	125	Hornblende Diorite some magnetite
125	137	" "
137	142	" " Calc. P.
142	154	" "
154	164	" " Calc. P.
164	175	Amphibolite, some sheared diorite some mineralization Calc. P. magnetite
175	185	Hornblende Diorite sheared some magnetite & Calc. P.

Crew Operator of Drill - Paul Dubinski
 Kenora Ont.

KENORA

FILED:

REC'D. NOV 10 1967

RECEIPT No.

MINING DIVISION

G. L. PIDGEON. DIAMOND DRILL LOG

PROPERTY Revel Tank CASING 22 HOLE NO. 5
 LOCATION STATION 2. DE EAST 40' NORTH 90' CORE SIZE A 2T ELEVATION 0
 LOGGED BY S. P. Ridgem BEARING SOUTH 55° WEST
 DATE March 1 April 1967 DIP 45'

FROM	TO	DESCRIPTION
0	22	Casing
22	23	Amphibolite some granite inclusions
23	25	"
25	87	" brecciated
87	100	" sheared
100	111	Hornblende Diorite fine grained Dtz feet (111.5 - 113.5)
111	116	" " some Dtz Calc. & Po
116	125	Mixed Amphibolite & sheared Diorite Calc. & Po
125	135	Sheared Diorite some mineralization Calc. & Po
135	137	" " fine grain
137	143	" " mineralized Calc. & Po
143	150	H. Diorite coarse
150	158	Hornblende Diorite fine grained
158	164	" " min Calc. & Po
164	168	" "
168	174	" " & Amphibolite min at 171-172' heavy Calc
174	178	" "
178	183	" " min Calc. & Po
183	195	Fine grained cherty material
195	200	H. Diorite some Amphibolite min Calc. & Po
200	204	Mixed Amphibolite & Diorite some min
204	206	" " " well min Calc. & Po
206	225	Amphibolite sheared some quartz
225	235	H. Diorite sheared
		Owner & Operator of Drill - Paul Dubinski Kenora

FILED:
 REC'D. NOV 10 1967
 RECEIPT No.
 MINING DIVISION

G. L. PIDGEON. DIAMOND DRILL LOG

PROPERTY Rezell Trap CASING 10 HOLE NO. 6
 LOCATION STATION 300E WEST 40' NORTH 82' CORE SIZE AxT ELEVATION 0
 LOGGED BY S. K. Padgett BEARING SOUTH 25° WEST
 DATE March April DIP 45°

FROM	TO	DESCRIPTION
0	10	Casing
10	15	Amphibolite brecciated
15	38	"
38	75	H. Diorite
75	100	Amphibolite & some Diorite
100	105	H. Diorite
105	120	Amphibolite & Diorite
120	125	" sheared & brecciated @ 123
125	150	" & some diorite & some magnetite (142-150 mineralogy)
150	161	" & Diorite mineralized Calc. P.
161	165	" " "
165	173	" " " mineralized Calc. P.
173	185	H. Diorite fine grain
185	187	Diorite
187	190	H. Diorite
190	192	Diorite
192	200	Quartz & Diorite
200	215	Diorite & Diorite

KENORA
 FILED:
 REC'D. NOV 10 1967
 RECEIPT No.
MINING DIVISION

*Owner Operator of Drill - Paul Dubinski
 Kenora*

G. L. PIDGEON. DIAMOND DRILL LOG

PROPERTY Quell Turp CASING 4' HOLE NO. 7
 LOCATION Station 100 East 21' North 32' CORE SIZE AXT ELEVATION 0
 LOGGED BY G. H. Padgem BEARING South 13° West
 DATE March/April 1967 DIP 45

FROM	TO	DESCRIPTION
0	9	Casing
9	21	List core
21	24	Granite
24	25	Amphibolite
25	26	" brecciated
26	27	Diorite
27	43	Amphibolite some Diorite
43	50	H. Diorite
50	75	Amphibolite some Diorite inclusions some breccia
75	100	" " " "
100	107	H. Diorite fine grain
107	110	Granite pink mineralized
110	117	Amphibolite sheared some granite inclusions
117	127	"
127	129	Granite dyke
129	150	Amphibolite some brecciated
150	168	Coarse H. Diorite

KENORA
 FILED:
 REC'D. NOV 10 1967
 RECEIPT No.
MINING DIVISION

Owner/Operator of Drill - Paul Dubinski
 Kenora

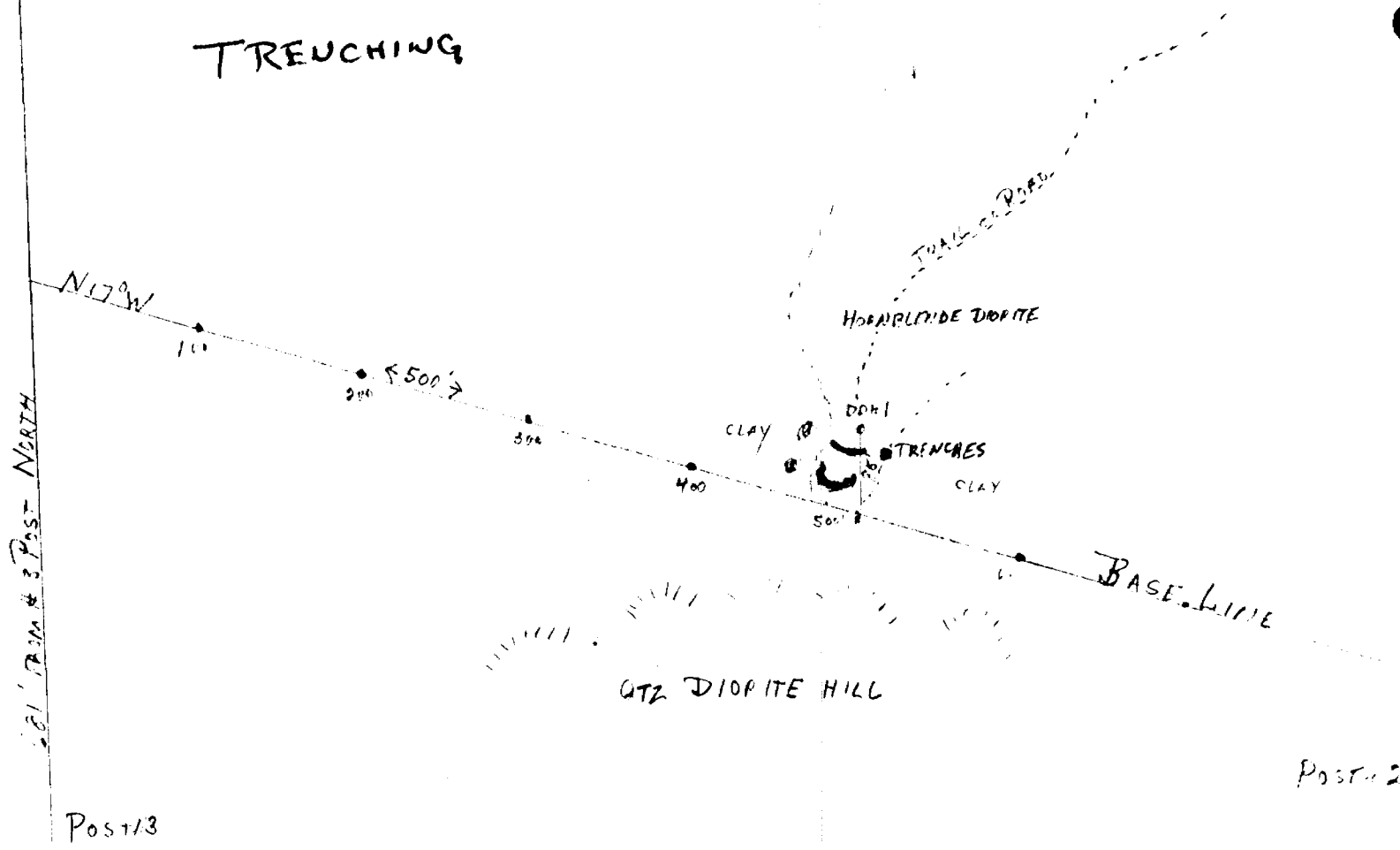
Claim K39003

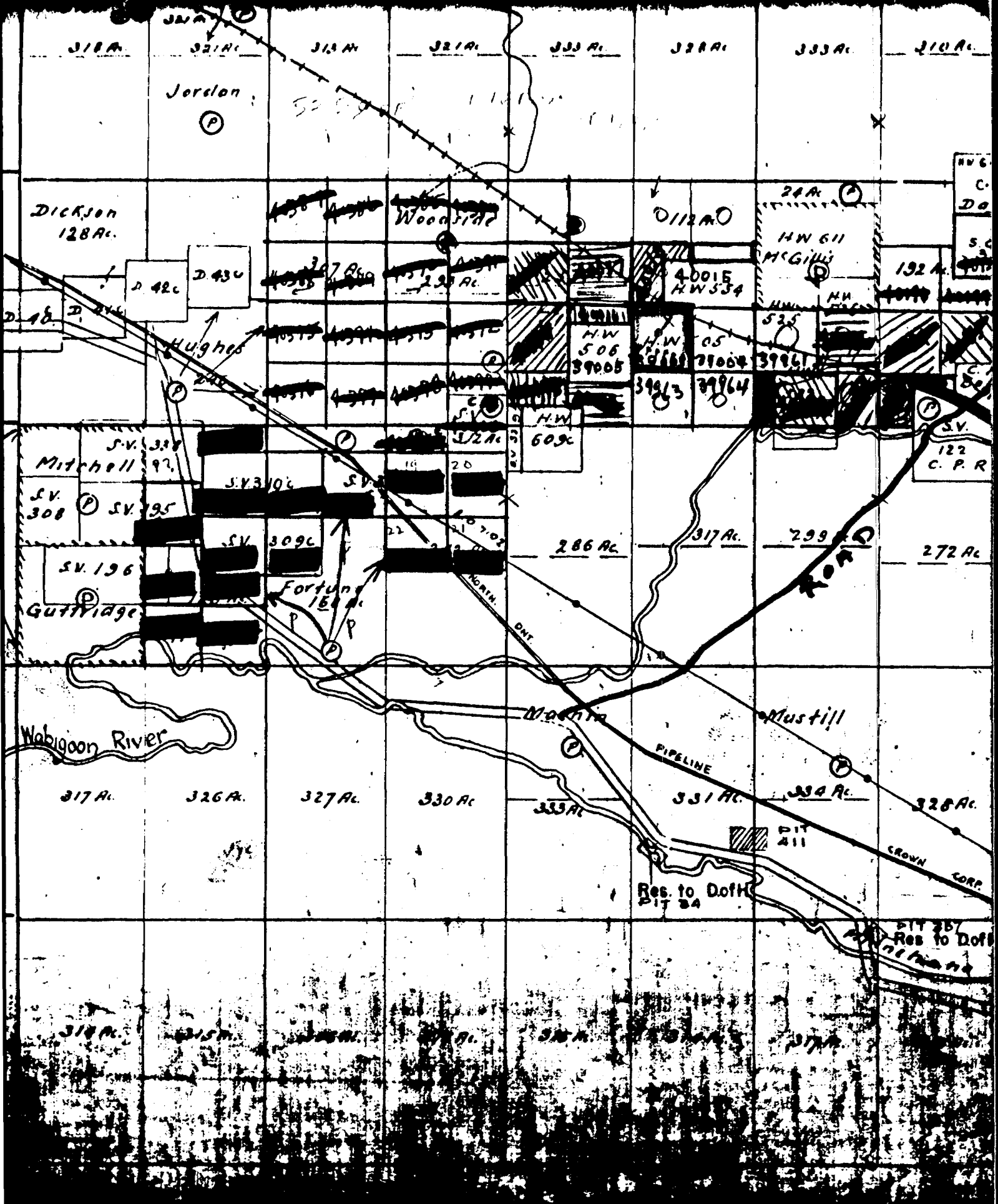
1 IN = 100'

7/10/17
17 2029

52 F 9 SE

TREUCHING





318A

321A

313A

321A

333A

328A

333A

310A

Jordan

DICKSON
128A

Woodside

24A

HW 611
MCGILLI

192A

D. 42c
D. 43c

307 Aca
2.25 AC

0112A

40015
HW 534

HW 506
39005

HW 05
39004

HW 39061

39013

39064

Hughes

S.V. 308
Mitchell 92

S.V. 306

S.V. 307

S.V. 308

HW 609c

286 AC

317 AC

299 AC

272 AC

Guttridge

Fortune
154 AC

327 AC

Wabigoon River

317A

326A

327A

330A

333A

331A

334A

328A

PIT 211

Res to Doff
PIT 2A

CROWN CORP.

PIT 257
Res to Doff