



52F09SW0017 19 TABOR LAKE

010

DIAMOND DRILLING

AREA: TABOR LAKE

REPORT NO: 19

WORK PERFORMED FOR: Novamin Resources Inc.

RECORDED HOLDER: Same as above [xx]
: Other []

<u>Claim No.</u>	<u>Hole No.</u>	<u>Footage</u>	<u>Date</u>	<u>Note</u>
K 502044	TAB1	250'	Jan/87	(1)
K 502044	TAB2	300'	Feb/87	(1)
K 502044	87-3	303'	Feb/87	(1)
K 502044	87-4	204'	Feb/87	(1)
K 502044	87-6	450'	Feb/87	(1)
K 502044	87-7	447'	Feb/87	(1)

NOTES: (1) #W8801.224, filed in Jan/89

NORONTEX EXPLORATION LTD.

DIP TESTS ON PAGE

DRYDEN - Ontario. ph: 807-937-5085

EXPLORATION LOG SHEET

PROPERTY <u>NOVILIN TAVOR LAKE - N.W. Ontario</u>	CLAIM NO. <u>K 502044</u>	BEARING <u>041¹/₂ mag</u>	LAT: <u>1° East</u>	LOCATION OF D. DRILL HOLE IN RELATION TO NEAREST CLAIM POST: <u>147 ft S</u> <u>North & 525 ft West of</u> <u>#2 of 502044.</u>	HOLE NO. <u>TAB 1</u>
DAY STARTED <u>Jan. 26</u>	DAY COMPL. <u>Jan. 29 1987</u>	J.V. NO. <u>n.a</u>	ANGLE <u>45°</u>	DEP: <u>1-35 South</u>	TOTAL DEPTH <u>250'</u>
LOGGED BY <u>J. Langelaar</u>	GRID NO. <u>subgrid</u>	NTS <u>52F9</u>	ELEV: <u>33' a. lake</u>		PAGE NO. <u>1</u>

FOOTAGE		Rock Classification	Other Features - Veins, Fractures, Foliation, etc.	MINERALIZATION		ASSAY DATA								
From	To			Type	%	Sample	Width	% Ni	% Cu	% Zn	% Fe	% Pb	oz/ton Au	oz/ton Ag
			SUMMARY: From 0 - 78.9 med. mafic flows; pillow lava's ; from 78.9 - 178.9 quartz Felspar Porphyry. MAIN VEIN(?) 121.1 to 121.8 with minor fb best assay from this quartz vein .04oz/ton, rerun at .02 oz/ton. 178.9 - 250 Mafic, pillowed flows.											
0	11.0	Overburden												
11.0	35.8	Mafic flows, med to dark green; pillow lava's uniform, massive texture; pronounced pillow selvages with black/drk green chloritic rims; weak schistosity @ 46°. Alteration restricted to selvages- bleaching on either side. A number of calcite veinlets throughout crosscutting this interval from 15° to 60°; odd speck of Py: less than 1%												
35.8	55.4	Greyish-green mafic volcs.: mafic flows ?; maf contain odd pillow. Some sections "bleached"-light grey - apple green over 4" to 6". Formation of												

J. Langelaar
March 24, 1987

SEP - 2 1987
AM 7:29 10/11/21/12/13/14/15/16/17/18/19/20/21/22/23/24/25/26/27/28/29/30/31

NORONTEX EXPLORATION LTD.

DRYDEN - Ontario. ph: 807-937-5085

EXPLORATION LOG SHEET

DIP TESTS ON PAGE

PROPERTY <u>NOVAMIN TABOR LAKE - N.W. Ontario</u>	CLAIM NO. <u>K 502044</u>	BEARING <u>044° mag</u>	LAT: <u>1° East</u>	LOCATION OF D. DRILL HOLE IN RELATION TO NEAREST CLAIM POST:	HOLE NO. <u>TAB 1</u>
DAY STARTED <u>Jan. 25</u> DAY COMPL. <u>Jan. 29 '87</u>	J.V. NO. <u>n.a</u>	ANGLE <u>45°</u>	DEP: _____		TOTAL DEPTH <u>250'</u>
LOGGED BY <u>J. Langelaer</u>	GRID NO. <u>subgrid</u>	NTS <u>52F9</u>	ELEV: <u>33'a.lake</u>		PAGE NO. <u>4</u>

FOOTAGE		Rock Classification	Other Features - Veins, Fractures, Foliation, etc.	MINERALIZATION		ASSAY DATA							oz/ton Au	oz/ton Ag	Avg
From	To			Type	%	Sample	Width	% Ni	% Cu	% Zn	% Fe	% Pb			
98.4	98.0	QFP, at 95.0	one streaklet of bluish py												
98.0	99.0	QFP, 1 cm wide	qtzvein at 98.4			A9505	1.0						tr		
99.0	106.0	QFP; odd qtz	streaklets/veinlets												
106.0	108.0	QFP, contains 2	qtzveinlets parallel. core; 1cm wide			A9506	2.0						tr		
108.0	118.0	QFP; minor qtz	at 108.7, less than 1 cm (qtz bleb)												
118.0	119.5	QFP, strong	silicification			A9507	1.5						tr		
119.5	121.1	QFP; 2 qtzveinlets,	4 and 20 mm (119.6 & 120.8)			A9508	1.6						tr		
121.1	121.9	QUARTZVEIN ; Pb	at bottom & top contact; minor Pb												
		within quartz	- MAIN VEIN??-			A9509	.8						.04 rerun	.02	
121.9	123.0	QFP; one 1" qtz	vein at 121.5 and minor qtz streaklet			A9510	1.1						tr		
123.0	125.0	QFP; one 2mm	veinlet			A9511	2.0						tr		
125.0	127.0	QFP				A9512	2.0						tr		
127.0	128.0	QFP				A9513	1.0						tr		
128.0	129.0	QFP				A9514	1.0						tr		
129.0	129.3	QUARTZVEIN with	Pb and odd py - WHOLE SAMPLE			A9515	.3						tr		
129.3	131.3	QFP; odd 2mm	qtzveinlet, minor Py, NO pb			A9516	2.0						tr		
131.3	133.3	QFP, virtually	no qtz veinlets/streaklets			A9517	2.0						tr		
133.3	135.5	QFP; several	qtzblebs + one 1" tzvn @ 135.5			A9518	2.2						tr		

DIP TESTS ON PAGE

NORONTEX EXPLORATION LTD.

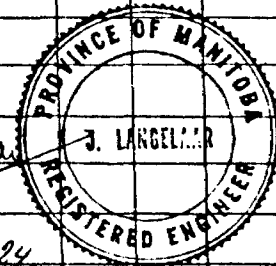
DRYDEN - Ontario. ph: 807-937-5085

EXPLORATION LOG SHEET

PROPERTY <u>NOV. 11 IN T. 30N R. 11E - NW Ontario</u>	CLAIM NO. <u>R502044</u>	BEARING <u>Q44° mag</u>	LAT: <u>1° East</u>	LOCATION OF D. DRILL HOLE IN RELATION TO NEAREST CLAIM POST: <u>10'</u> north & <u>575'</u> west of post N° <u>2</u> of 502044	HOLE NO. <u>788</u>
DAY STARTED <u>Febr. 1, 1987</u> DAY COMPL. <u>Febr. 3</u>	J.V. NO. <u>n.a</u>	ANGLE <u>45°</u>	DEP: <u>2+75 S.</u>		TOTAL DEPTH <u>300'</u>
LOGGED BY <u>J. Langelaar</u>	GRID NO. <u>subgrid</u>	NTS <u>5000</u>	ELEV: _____		PAGE NO. <u>1</u>

FOOTAGE		Rock Classification	Other Features - Veins, Fractures, Foliation, etc.	MINERALIZATION		ASSAY DATA								
From	To			Type	%	Sample	Width	% Ni	% Cu	% Zn	% Fe	% Pb	oz/ton Au	oz/ton Ag
		SUMMARY: From 182.0 - 252.0 QUARTZ FELDSPAR PORPHYRY												
		all assay results are "trace"												
0	9.0	Casing												
9.0	77.0	Predom. mafic volcanics; flows with pillows (selvages, dk green chlorite & "bleaching" + sericite); 3" of qtz feldsp. porphyry			50.4. May									
		contain chloritic tuff series from around 50' onward. Odd carb veinlets crosscutting and subparallel. core												
		Minor shear over 1/2" at 48.0. Moderate to strongly sheared from 60.4 - 64.0 and strongly sheared from												
		64.0 to 67.0 at 15° Badly broken core for first 2 1/2 feet. Minor ex, sometimes slight												
77.0	110.5	As above; less distinct selvages; abundant "bleached to sericitic sections; core angles at 40°												

J. Langelaar
March 24, 1987



MINING DIV.
SEP 2 1985
AM 78900112123456 PM

DIP TESTS ON PAGE

NORONTEX EXPLORATION LTD.

DRYDEN - Ontario. ph: 807-937-5085

EXPLORATION LOG SHEET

PROPERTY <u>NOVAMIN LABOR LINE - NW Ontario</u>	CLAIM NO. <u>K502044</u>	BEARING <u>043° mag</u>	LAT: <u>1° East</u>	LOCATION OF D. DRILL HOLE IN RELATION TO NEAREST CLAIM POST:	HOLE NO. <u>T.B #2</u>
DAY STARTED <u>Febr. 1, 1987</u> DAY COMPL. <u>Febr. 3</u>	J.V. NO. <u>n.a</u>	ANGLE <u>45°</u>	DEP: _____		TOTAL DEPTH <u>300'</u>
LOGGED BY <u>J. Langelaar</u>	GRID NO. <u>subgrid</u>	NTS <u>5279</u>	ELEV: _____		PAGE NO. <u>3</u>

FOOTAGE		Rock Classification	Other Features - Veins, Fractures, Foliation, etc.	MINERALIZATION		ASSAY DATA						oz/ton Au	oz/ton Ag	Avg.	
From	To			Type	%	Sample	Width	% Ni	% Cu	% Zn	% Fe				% Pb
cont'd	182.0	Chloritic; contact with QFP (follows)	sericitized												
		over 3"; contact rather sharp but irregular, defini.													
		NOT gradational/transitional. Odd speck	of Py												
		scattered throughout this interval.													
182.0	252.0	QFP - for detailed description see log for T.B #1													
		and Beecham's 1985 descript. Sample intervals dicted													
		by amount of sulphides, qtzveins/veinlets; in addition													
		several check samples.													
182.0	185.0	QFP; odd qtz streaklet; odd dkgreen chlor. bleb													
		check sample Py less 1%; silicific + seric near													
		upper contact			49529	3.0							t		
185.0	189.0	QFP													
189.0	192.0	QFP; 3 generations of crosscutting veinlets, odd													
		dkgreen chlorite bleb & streaklet; odd Py			49530	3.0							t		
		weak shearing or schistosity @ 33° near 192.0													
192.0	195.0	QFP, massive, no qtzvns; odd Py													
195.0	197.0	QFP; 2" grey qtzvn @ 196.2; odd Py			49531	2.0							t		
197.0	199.0	QFP; 20% qtzvns, parallel & crosscutting	core; fine Py		49532	2.0	Py around 1%						t		

DIP TESTS ON PAGE

NORONTEX EXPLORATION LTD.

DRYDEN - Ontario. ph: 807-937-5085

EXPLORATION LOG SHEET

FOOTAGE		Rock Classification	Other Features - Veins, Fractures, Foliation, etc.	MINERALIZATION		ASSAY DATA							oz/ton Au	oz/ton Ag	Avg.		
From	To			Type	%	Sample	Width	% Ni	% Cu	% Zn	% Fe	% Pb					
199.0	201.0	QFP; 1/2" qtzvnlet at 200.2			A9533	2.0											
201.0	204.0	QFP; four 1/2" qtzvnlets + few 1mm ones; Py		less than 1%	A9534	3.0											
204.0	207.0	QFP; odd small greyblue qtz veinlet; odd		cubic Py	A9535	3.0											
207.0	209.0	QFP; no qtzvnlets; dkgreen chlorite streaklet, cubic Py			A9536	2.0			less than 1%								
209.0	211.5	QFP; dk green chlorite patches and streaklets, hardly any qtzvnlets			A9537	2.5											
211.5	214.0	QFP; odd qtzvnlet; py less than 1%			A9538	2.5											
214.0	217.0	QFP; odd Py, some cubes, odd bluish grey qtz streaklet; minor carb; width 1/2mm to 3 mm.			A9539	3.0											
217.0	220.0	QFP; odd qtzvnlet and one 1/2" qtzvnlet at 219.7; odd Py			A9540	3.0											
220.0	223.0	As above; "slivered" core around 225; Py		less than 1%	A9541	3.0											
223.0	225.0	As above; two 1/2" qtzvns; Py less than 1%			A9542	2.0											
225.0	227.0	QFP; virtually no qtzvnlets															
227.0	229.0	QFP two 1/2" qtzvns; odd Py cube			A9543	2.0											
229.0	234.0	QFP; odd qtzstreaklet; no visible mineralization															
234.0	236.0	QFP; 3/4" qtzvn at 234.8 and 1/2" @ 235.8; minimal Py			A9544	2.0											
236.0	240.0	QFP; no qtzvnlets; Py minimal															
240.0	242.0	QFP; as above; checksample only; Py neglig.			A9545	2.0											

PROPERTY NOVAMIN TARBOR LAKE - NW Ontario

CLAIM NO. K502044

BEARING 043° mag

LAT: 1° East

LOCATION OF D. DRILL HOLE IN RELATION TO NEAREST CLAIM POST:

HOLE NO. T.B. #2

DAY STARTED Febr. 1, 1987 DAY COMPL. Febr. 3

J.V. NO. n.a

ANGLE 45°

DEP: _____

TOTAL DEPTH 300'

LOGGED BY J. Langelaar

GRID NO. subgrid

NTS 5279

ELEV: _____

PAGE NO. 4

DIP TESTS ON PAGE

NORONTEX EXPLORATION LTD.
 DRYDEN - Ontario. ph: 807-937-5085

EXPLORATION LOG SHEET

PROPERTY <u>KOVANIN TADOR LAKE - N.W. Ontario</u>	CLAIM NO. <u>K502044</u>	BEARING <u>04 1/2° mag</u>	LAT: <u>2.00 East</u>	LOCATION OF D. DRILL HOLE IN RELATION TO NEAREST CLAIM POST: <u>10' south & 475' west of K° 2 post 502044</u>	HOLE NO. <u>07-3</u>
DAY STARTED <u>Febr. 5 '87</u> DAY COMPL. <u>Febr. 12</u>	J.V. NO. <u>n.a.</u>	ANGLE <u>45°</u>	DEP: <u>2.76 South</u>		TOTAL DEPTH <u>303'</u>
LOGGED BY <u>J. Langelaar</u>	GRID NO. <u>subgrid</u>	NTS <u>52F9</u>	ELEV: _____		PAGE NO. _____

FOOTAGE		Rock Classification	Other Features - Veins, Fractures, Foliation, etc.	MINERALIZATION		ASSAY DATA							oz/ton Au	oz/ton Ag	Avg.
From	To			Type	%	Sample	Width	% Ni	% Cu	% Zn	% Fe	% Pb			
		SUMMARY: From 128.0 - 201.0 QUARTZ FELDSPAR PORPHYRY													
		all assay results are "trace"													
0	6.0	Casing													
6.0	97.0	Mix of pillowed, mafic flows, foliated	Flows and minor tuffs. Selvages not well developed; light green "bleached" portions prominent. Alteration: black chlorite and minor sericite; some sections highly sericitic & (light green) chloritic. Suspect that minor chemical sedimentary bands of less than 4" thick may be present. Calcite veining throughout core ranging from 1mm to 2 cm. Only minor qtzveins & veinlets and qtzblebs with chlorite "draped" around it. Qtz is generally white bull qtz. Odd speck of Py and very odd speck of Cp; overall less than 1%.												

J. Langelaar
 PROVINCE OF MANITOBA
 J. LANGELAAR
 REGISTERED ENGINEER

March 24, 1987
 MANITOBA DIV.
 SLP-2000
 46
 786601121213456

NORONTEX EXPLORATION LTD.

DRYDEN - Ontario. ph: 807-937-5085

EXPLORATION LOG SHEET

DIP TESTS ON PAGE

PROPERTY <u>NOVAMIN TACOR LAKE - N.W. Ontario</u>	CLAIM NO. <u>K502044</u>	BEARING <u>041° mag</u>	LAT: <u>2.00 East</u>	LOCATION OF D. DRILL HOLE IN RELATION TO NEAREST CLAIM POST: <u>10' south & 475' west of N° 2 post 502044</u>	HOLE NO. <u>67-3</u>
DAY STARTED <u>Febr. 5 '87</u> DAY COMPL. <u>Febr. 12</u>	J.V. NO. <u>n.a.</u>	ANGLE <u>45°</u>	DEP: <u>2.76 South</u>		TOTAL DEPTH <u>303'</u>
LOGGED BY <u>J. Langelaar</u>	GRID NO. <u>subgrid</u>	NTS <u>52F9</u>	ELEV: _____		PAGE NO. <u>2</u>

FOOTAGE		Rock Classification	Other Features - Veins, Fractures, Foliation, etc.	MINERALIZATION		ASSAY DATA								
From	To			Type	%	Sample	Width	% Ni	% Cu	% Zn	% Fe	% Pb	oz/ton Au	oz/ton Ag
97.0	± 103.0	Massive mafic flows:												
		with minor tuff interbeds; no sharp bottom contact												
± 103	128.0	Predom. mafic pillowed flows; selvages,	bleaching etc.											
		Core angles at 45° at 109'. "Bottom" contact with												
		QFP probably sharp; core badly broken up!												
		Odd and fine Py scattered throughout -	less than 1%											
128.0	201.0	Quartz Feldspar Porphyry: Generally no	distinct											
		quartz veins other than odd 1mm to 4mm	ones. First											
		2" sericitized; odd streaklets and small	specks											
		of Py												
		Following are check samples:												
128	129.0	sericitized, start with 5 mm qtzvn	Py less	1%	A9552	1.0							trace	
131.0	133.0	tourmaline streaklets; 1 qtzvnlet @ 2mm	--	1%	A9553	2.0							trace	
139.0	141.0	tourmaline streaklets; one 3mm qtzvn	- - -	1%	A9554	2.0							trace	
145.0	147.0	several black chlorite(?) streaklets; minute												
		qtzveinlets less than ¼ mm wide	- - - -	1%	A9555	2.0							trace	
150.5	152.5	bluish qtzvnlet and one 3mm qtzvnlet	Py less than	1%	A9556	2.0							trace	
168.0	170.0	3 qtzvnlets; odd speck of Py	- - - -	1%	A9557	2.0							trace	

DIP TESTS ON PAGE ... NONE

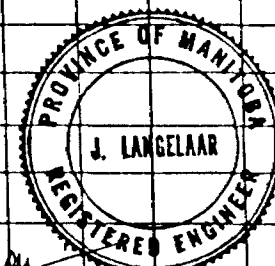
NORONTEX EXPLORATION LTD.
 DRYDEN - Ontario. ph: 807-937-5085

EXPLORATION LOG SHEET

PROPERTY: <u>NOVANIN - TABOR LAKE - N.W. Ontario</u>	CLAIM NO. <u>502044</u>	BEARING: <u>041° mag</u>	LAT: <u>2.50 East</u>	LOCATION OF D. DRILL HOLE IN RELATION TO NEAREST CLAIM POST: <u>110' North & 425' west of N°2 of 502044</u>	HOLE NO. <u>87-4</u>
DAY STARTED: <u>Febr. 13, 1987</u> DAY COMPL. <u>Febr. 17</u>	J.V. NO. <u>n.a.</u>	ANGLE <u>45°</u>	DEP: <u>1+69 South</u>		TOTAL DEPTH <u>204'</u>
LOGGED BY <u>J. Langelaar</u>	GRID NO. <u>subgrid</u>	NTS <u>52F9</u>	ELEV: <u>?</u>		PAGE NO. <u>1</u>

FOOTAGE		Rock Classification	Other Features - Veins, Fractures, Foliation, etc.	MINERALIZATION		ASSAY DATA											
From	To			Type	%	Sample	Width	% Ni	% Cu	% Zn	% Fe	% Pb	oz/ton Au	oz/ton Ag	Avg.		
		SUMMARY:	From 89.0 - 164.9	QUARTZ FELDSPAR PORPHYRY													
				ONE assay @ .24 oz/ton Au in contact zone between porphyry and mafic flows. rest of assay results are "trace"													
0	10.0	Casing															
10.0	89.0	Var. mafic pillowed flows; locally well developed selvages, rims etc.etc. (bleaching, dk green chlorite & minor sericite. Qtz & Qtzcalcite veins & veinlets crosscutting core at various angles; some contorted convoluted carb development near and within selvage rims; 2" Qtzcarb @ 55' conforming to core angles @ 40°. Odd scattered speck of Py; in many instances slight increase in Py near Qtzcalcite veins.															
89.0	164.9	QUARTZ FELDSPAR PORPHYRY; top contact with preceeding interval sharp but irregular.															

J. Langelaar



March 24, 1987



DIP TESTS ON PAGE ... NONE

NORONTEX EXPLORATION LTD.

DRYDEN - Ontario. ph: 807-937-5085

EXPLORATION LOG SHEET

PROPERTY <u>NOVAJIN - TACOR LAKE - N.W. Ontario</u>	CLAIM NO. <u>502044</u>	BEARING <u>041° mag</u>	LAT: <u>2.50 East</u>	LOCATION OF D. DRILL HOLE IN RELATION TO NEAREST CLAIM POST: <u>110' North</u> & <u>425' west of N°2</u> of 502044	HOLE NO. <u>87-4</u>
DAY STARTED <u>Febr. 13, 1987</u> DAY COMPL. <u>Febr. 17</u>	J.V. NO. <u>n.a.</u>	ANGLE <u>45°</u>	DEP: <u>1+69 South</u>		TOTAL DEPTH <u>204'</u>
LOGGED BY <u>J. Langelaar</u>	GRID NO. <u>subgrid</u>	NTS <u>52F9</u>	ELEV: <u>?</u>		PAGE NO. <u>2</u>

FOOTAGE		Rock Classification	Other Features - Veins, Fractures, Foliation, etc.	MINERALIZATION		ASSAY DATA								
From	To			Type	%	Sample	Width	% Ni	% Cu	% Zn	% Fe	% Pb	oz/ton Au	oz/ton Ag
cont'd	164.9		For the whole interval, very little qtz development when present: sampled: NO DISTINCT "MAIN VEIN"!											
			Most are veinlets ranging from 1 mm to 5 mm; Py scattered throughout but overall less than 1%											
			Following are check samples:											
89.0	91.0		QFP, considerable sericite development & silicification near "top" contact; no distinct qtz vns or vnlets			A9569	2.0						trace	
91.0	92.0		Odd qtz veinlet			A9570	1.0						trace	
92.0	103.0		QFP; no discrete qtzvns; odd bluish veinlet (less than 1 mm wide); odd Py speck & streaklet; streaklet and blebs of dk green chlorite											
103.0	105.0		5 mm wide qtzvn' subparalleling core, runs the complete length of core (this interval) Minor tiny Py cubes near ½ mm bluish qtz veinlet			A9571	2.0						trace	
105.0	107.0		continuation of subparalleling qtzvn as above			A 9572	2.0						trace	
107	111.0		odd veinlet											
111.0	113.0		odd veinlet up to 2 mm			A9573	2.0						trace	
113.0	115.0		contains highly siliceous intersection of 1.2': NO VEIN			A9574	2.0						trace	

DIP TESTS ON PAGE ... NONE

NORONTEX EXPLORATION LTD.

DRYDEN - Ontario. ph: 807-937-5085

EXPLORATION LOG SHEET

PROPERTY <u>NOVAPIN - TABOR LAKE - N.W. Ontario</u>	CLAIM NO. <u>502044</u>	BEARING <u>041/2° mag</u>	LAT: <u>2.50 East</u>	LOCATION OF D. DRILL HOLE IN RELATION TO NEAREST CLAIM POST: <u>110'</u> north & <u>425'</u> west of N°2 of 502044	HOLE NO. <u>87-4</u>
DAY STARTED <u>Febr. 13, 1987</u>	DAY COMPL. <u>Febr. 17</u>	J.V. NO. <u>n.a.</u>	ANGLE <u>45°</u>	DEP: <u>1+69 South</u>	TOTAL DEPTH <u>204'</u>
LOGGED BY <u>J. Langelaar</u>	GRID NO. <u>subgrid</u>	NTS <u>52F9</u>	ELEV: <u>?</u>		PAGE NO. <u>3</u>

FOOTAGE		Rock Classification	Other Features - Veins, Fractures, Foliation, etc.	MINERALIZATION		ASSAY DATA							oz/ton Au	oz/ton Ag	Avg.	
From	To			Type	%	Sample	Width	% Ni	% Cu	% Zn	% Fe	% Pb				
115.0	118.0	Odd qtz veinlet														
118.0	120.0	Several 2 - 4 mm veinlets; streaklet of	Galena??		A9575	2.0							trace			
120.0	124.5	Odd Py, no qtz veinlets														
124.5	127.0	One 3/4" qtz vein @ 124.9; odd Py			A9576	2.5							trace			
NOTE: From 127.0		onward, no distinct qtz veins anymore; occasional veinlet!														
127.0	135.0	QFP														
135.0	137.0	- , check sample			A9577	2.0							trace			
137.0	142.0	-														
142.0	143.5	-. odd veinlet			A9578	1.5							trace			
143.5	150.0	-, odd bluish veinlet														
150.0	152.0	-, check			A9579	2.0							trace			
152.0	155.0	-, odd speck Py, no veinlets														
155.0	157.0	-, slight increase in quartz			A9580	2.0							trace			
157.0	162.9	QFP, odd veinlet, odd Py speck														
162.9	164.9	QFP, minor veinlets check; few spots with fine cub. Py			A9581	2.0							trace			
164.9	165.4	CONTACT ZONE with pillowed lava's; qtz carb on contact														
		with dissem. and cubes of Py @ 1%			A9582	.5			BERUN @ .24				.24			

DIP TESTS ON PAGE ...LAST.....

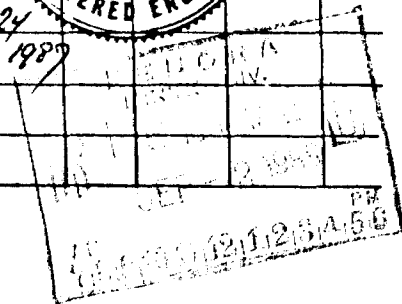
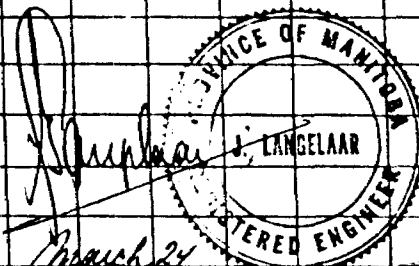
NORONTEX EXPLORATION LTD.

DRYDEN - Ontario. ph: 807-937-5085

EXPLORATION LOG SHEET

PROPERTY <u>NOVAMIN - TACOR LAKE; N.W. Ontario</u>	CLAIM NO. <u>502044</u>	BEARING <u>03 1/2° mag</u>	LAT: <u>3.00 West</u>	LOCATION OF D. DRILL HOLE IN RELATION TO NEAREST CLAIM POST: <u>65' north & 975' west of N°2 of</u>	HOLE NO. <u>87-6</u>
DAY STARTED <u>Febr. 18 '87</u> DAY COMPL. <u>Febr 23</u>	J.V. NO. <u>n.a.</u>	ANGLE <u>65°</u>	DEP: <u>2.22 South</u>		TOTAL DEPTH <u>450'</u>
LOGGED BY <u>J. Langelaar</u>	GRID NO. <u>subgrid</u>	NTS <u>52F9</u>	ELEV: <u>2' above lake</u>	<u>502044</u>	PAGE NO. <u>1</u>

FOOTAGE		Rock Classification	Other Features - Veins, Fractures, Foliation, etc.	MINERALIZATION		ASSAY DATA									
From	To			Type	%	Sample	Width	% Ni	% Cu	% Zn	% Fe	% Pb	oz/ton Au	oz/ton Ag	Avg.
		SUMMARY: From 345.3 - 427.2 QUARTZ FELDSPAR PORPHYRY													
		all assay results but one are "trace"													
0	20.0	Casing													
20.0	89.0	Predom. mafic - pillowed - lava's; well developed selvages, rims, "bleaching" (light green etc. etc. Pillow rims contain in some instances contorted carbons & vnlets. Odd Qtz carb vnlet crosscutting core; core angles @ 35' @ 20°, @ 62' @ 30° and @ 88' @ 30° Rare speck of Py. This interval may contain minor, massive, uniform, textureless mafic flow material													
89.0	123.6	As above; considerable carb developm. over 5" at 114' near & in pillow selvage.													
123.6	126.3	Finegrained dioritic sill or dike; last one foot is coarser grained.													



DIP TESTS ON PAGE ...LAST.....

NORONTEX EXPLORATION LTD.

DRYDEN - Ontario. ph: 807-937-5085

EXPLORATION LOG SHEET

PROPERTY <u>NOVAHIN - TABOR LAKE; N.W. Ontario</u>	CLAIM NO. <u>502044</u>	BEARING <u>03 1/2° mag.</u>	LAT: <u>3.00 West</u>	LOCATION OF D. DRILL HOLE IN RELATION TO NEAREST CLAIM POST: <u>65' north & 975' west of N° 2 of 502044</u>	HOLE NO. <u>87-6</u>
DAY STARTED <u>Febr. 18 '87</u> DAY COMPL. <u>Febr 23</u>	J.V. NO. <u>n.a.</u>	ANGLE <u>65°</u>	DEP: <u>2.22 South</u>		TOTAL DEPTH <u>450'</u>
LOGGED BY <u>J. Langelaar</u>	GRID NO. <u>subgrid</u>	NTS <u>52F9</u>	ELEV: <u>2' above 1st</u>		PAGE NO. <u>3</u>

FOOTAGE		Rock Classification	Other Features - Veins, Fractures, Foliation, etc.	MINERALIZATION		ASSAY DATA						oz/ton Au	oz/ton Ag	Avg.	
From	To			Type	%	Sample	Width	% Ni	% Cu	% Zn	% Fe				% Pb
<u>331</u>	<u>345.3</u>	<u>Predom. "speckled foliated mafic volcs.</u>	<u>qtzvnlets; odd speck of Py. Badly broken</u>	<u>Minor carb and</u>											
		<u>1 1/2' near 333'</u>		<u>core over</u>											
<u>345.3</u>	<u>427.2</u>	<u>QUARTZ FELDSPAR PORPHYRY. "Top" contact</u>	<u>sharp, irregular</u>												
		<u>at approx. 32°. First 3 to 4 feet schistose with angles</u>													
		<u>@ 41°. Odd specks and cubes of Py, generally less than</u>		<u>1%</u>											
<u>348.0</u>	<u>350.0</u>	<u>QFP, slightly schistose at start & sericitic, two</u>			<u>A9583</u>	<u>2.0</u>						<u>trace</u>			
		<u>1 - 2 mm qtzvnlets</u>													
<u>350.0</u>	<u>353.0</u>	<u>odd veinlet</u>			<u>A9584</u>	<u>3.0</u>						<u>trace</u>			
<u>353.0</u>	<u>356.0</u>	<u>Five, 3mm qtzvnlets in last foot and at</u>	<u>start 1 cm wide</u>												
		<u>qtzvn with cubic Py; locally 3% Py over</u>	<u>1/2"</u>		<u>A9585</u>	<u>3.0</u>						<u>trace</u>			
<u>356.0</u>	<u>358.0</u>	<u>one 3mm vnlet at 356.5</u>			<u>A9586</u>	<u>2.0</u>						<u>trace</u>			
<u>358.0</u>	<u>360.5</u>	<u>odd vnlet</u>			<u>A9587</u>	<u>2.5</u>						<u>trace</u>			
<u>360.5</u>	<u>362.5</u>	<u>3 veinlets</u>	<u>Py = 1%??</u>		<u>A9588</u>	<u>2.5</u>						<u>trace</u>			
<u>362.5</u>	<u>365.0</u>	<u>3 vnlets</u>			<u>A9589</u>	<u>2.5</u>						<u>trace</u>			
<u>365.0</u>	<u>367.5</u>	<u>no qtzvnlets</u>			<u>A9590</u>	<u>2.5</u>						<u>trace</u>			
<u>367.5</u>	<u>370.0</u>	<u>one bifurcating 1cm-wide qtzvn</u>			<u>A9591</u>	<u>2.5</u>						<u>trace</u>			
<u>370.0</u>	<u>372.5</u>	<u>two vnlets</u>			<u>A9592</u>	<u>2.5</u>						<u>trace</u>			

DIP TESTS ON PAGE ...LAST.....

NORONTX EXPLORATION LTD.

DRYDEN - Ontario. ph: 807-937-5085

EXPLORATION LOG SHEET

PROPERTY <u>NOVAMIN - TACOR LAKE; N.W. Ontario</u>	CLAIM NO. <u>502044</u>	BEARING <u>03.4° mag</u>	LAT: <u>3.00 West</u>	LOCATION OF D. DRILL HOLE IN RELATION TO NEAREST CLAIM POST: 65' north & 975' west of N°2 of 502044	HOLE NO. <u>87-6</u>
DAY STARTED <u>Febr. 18 '87</u> DAY COMPL. <u>Febr 23</u>	J.V. NO. <u>n.a.</u>	ANGLE <u>65°</u>	DEP: <u>2.22 South</u>		TOTAL DEPTH <u>450'</u>
LOGGED BY <u>J. Langelaar</u>	GRID NO. <u>subgrid</u>	NTS <u>52P9</u>	ELEV: <u>2' above lke</u>		PAGE NO. <u>4</u>

FOOTAGE		Rock Classification	Other Features - Veins, Fractures, Foliation, etc.	MINERALIZATION		ASSAY DATA							oz/ton Au	oz/ton Ag	Avg.
From	To			Type	%	Sample	Width	% Ni	% Cu	% Zn	% Fe	% Pb			
CONT'D QUARTZ FELDSPAR PORPHYRY:															
372.5	375.0	two vnlets				A9593	2.5							trace	
375.0	377.0	odd vnlet, Py = 1% or less				A9594	2.0							trace	
377.0	381.0	one 2mm qtzvnlet, odd speck of Py													
381.0	384.0	two 3mm qtzvnlet @ 381.4 and one @ 384'. Near 383'													
		about one foot of silicification with coarse Py													
		cubes up to 3%				A9595	3.0							trace	
384.0	386.5	1" qtzvn @ 385.0'				A9596	2.5							trace	
386.5	389.0	½ - ¾" qtzvn subparallel through whole core interv.													
		this is length and NOT width!				A9597	2.5							trace	
389.0	392.0	odd vnlet - odd Py speck of Pb??				A9598	3.0							trace	
392.0	394.0	several qtzvnlets and quartz patches				A9599	2.0							trace	
394.0	397.0	¾" to 1" qtzvn subparallel to core throughout most													
		of this interval: length not width!!				A9600	3.0							trace	
397.0	400.0	four 1 - 2mm qtzvnlets, two crossing each other				A9601	3.0							.01	
400.0	403.0	one qtzvn at 402' @ 2mm; first foot weakly schistose				A9602	3.0							trace	
403.0	410.0	no veinlets													
410.0	411.0	one vnlet at 410.8				A9603	1.0							trace	

DIP TESTS ON PAGE3.....

NORONTEX EXPLORATION LTD.
 DRYDEN - Ontario. ph: 807-937-5085

EXPLORATION LOG SHEET

PROPERTY <u>NOVAMIN - TABOR LAKE n.w.ontario</u>	CLAIM NO. <u>K502044</u>	BEARING <u>031° 12' 00" E</u>	LAT: <u>2.50 West</u>	LOCATION OF D. DRILL HOLE IN RELATION TO NEAREST CLAIM POST: <u>50' north of and 925' west post No 2 of 502044</u>	HOLE NO. <u>87-7</u>
DAY STARTED <u>Febr 23 '87</u> DAY COMPL. <u>Febr. 26</u>	J.V. NO. <u>n.a</u>	ANGLE <u>60°</u>	DEP: <u>2.40 South</u>	TOTAL DEPTH <u>447</u>	PAGE NO. <u>1</u>
LOGGED BY <u>J. Angelaar</u>	GRID NO. <u>subgrid</u>	NTS <u>52F9</u>	ELEV: <u>2'a.lake</u>		

FOOTAGE		Rock Classification	Other Features - Veins, Fractures, Foliation, etc.	MINERALIZATION		ASSAY DATA							oz/ton Au	oz/ton Ag	Avg
From	To			Type	%	Sample	Width	% Ni	% Cu	% Zn	% Fe	% Pb			
		SUMMARY:	From 334.8 - 414.4	QUARTZ FELDSPAR PORPHYRY											
			all assay results are "trace"												
0	22.0	Casing													
22.0	55.1	Mafic pillowed	lava's; selvages, bleaching etc.												
55.1	57.6	Intermediate sill or dike,	somewhat dioritic												
57.6	58.6	LC	LOST CORE												
58.6	107.0	Mafic pillowed	flows; qtz and qtz carb inlets												
			crosscutting core. At 103.8 intense qtz carb developm.												
			over 3/4" followed by highly sheared material-seri-												
			citic until 104.7												
107.0	161.2	Mafic pillow'd	flows; weakly schistose.												
161.2	163.3	Felsic dike,	somewhat porphyritic and greissic @ 51°												
163.3	186.9	Massive, basic	flows; qtz & qtz carb veinlets												
186.9	192.0	Felsic dike/	sill/apophyse; granitic to qtz dioritic												
			in composition.												

MANITOBA
 MINING DIV.
 SEP-2 1987
 1121 213458

PROVINCE OF MANITOBA
 ANGELAAR
 REGISTERED ENGINEER
 March 24/1987

DIP TESTS ON PAGE

NORONTEX EXPLORATION LTD.

DRYDEN - Ontario. ph: 807-937-5085

EXPLORATION LOG SHEET

PROPERTY: <u>OVANIN - TABOR LAKE n.w.ontario</u>	CLAIM NO: <u>K502044</u>	BEARING: <u>031° mag</u>	LAT: <u>2.50 West</u>	LOCATION OF D. DRILL HOLE IN RELATION TO NEAREST CLAIM POST: <u>50' north of</u> and <u>925' west post No</u> <u>2 of 5020-4</u>	HOLE NO. <u>87-7</u>
DAY STARTED: <u>Febr 23 '87</u> DAY COMPLETED: <u>Febr. 26</u>	J.V. NO. <u>n.a</u>	ANGLE <u>60°</u>	DEP: <u>2.40 South</u>		TOTAL DEPTH <u>447</u>
LOGGED BY <u>J. Tangelaar</u>	GRID NO. <u>subgrid</u>	NTS <u>52F9</u>	ELEV: <u>2'a.lake</u>		PAGE NO. <u>2</u>

FOOTAGE		Rock Classification	Other Features - Veins, Fractures, Foliation, etc.	MINERALIZATION		ASSAY DATA								
From	To			Type	%	Sample	Width	% Ni	% Cu	% Zn	% Fe	% Pb	oz/ton Au	oz/ton Ag
192.0	277.8	Banded mafic flow - banded according to		Beecham										
		qtz & qtzcarb vns & vnlets scattered throughout,												
		At 244.2 3" of qtzcarb vn. For whole interval												
		occas. qtz carb and calcite vns.												
277.8	334.8	Mafic pillow lava's (selvages, bleaching etc)												
		Odd qtzcarb veining near selvages.												
334.8	414.5	QUARTZ FELDSPAR PORPHYRY; very few qtz vnlets,												
		some bluish, generally less than 3mm wide; sporadic												
		speck of Py. Following are check samples, primarily												
		based on the presence of qtzvnlets. Last foot												
		(in contact with pillow lava's, reddish-hematized?-												
		and moderately schistose @ 50°												
337.0	338.0	QFP, 2mm vnlet			A9606	1.0						trace		
338.0	340.0	- odd qtzvnlet			A9607	2.0						trace		
347.0	349.0	- qtzvnlet subparalleling core over 3/4"			A9608	2.0						trace		
357.0	359.0	- ,2 vnlets			A9609	2.0						trace		
367.0	369.0	-; odd vnlet, very finely dissem. Py less than 1%			A9610	2.0						trace		
377	379.0	-; one 2mm vnlet			A9611	2.0						trace		

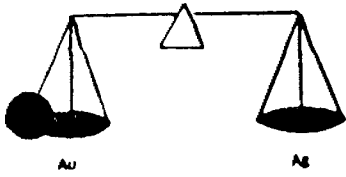
DIP TESTS ON PAGE

NORONTEX EXPLORATION LTD.
DRYDEN - Ontario. ph: 807-937-5085

EXPLORATION LOG SHEET

PROPERTY NOVAMIN - TABOR LAKE n.w.ontario	CLAIM NO K502044	BEARING 03 1/2° mag	LAT: 2.50 West	LOCATION OF D. DRILL HOLE IN RELATION TO NEAREST CLAIM POST: 50' north of and 925' west post No 2 of 5020-4	HOLE NO. 87-7
DAY STARTED Febr 23 '87 DAY COMPL Febr.26	J.V. NO. n.a	ANGLE 60°	DEP: 2.40 South		TOTAL DEPTH 447
LOGGED BY J. Tangelaar	GRID NO. subgrid	NTS 52F9	ELEV: 2' a.lake		PAGE NO. 3

FOOTAGE		Rock Classification	Other Features - Veins, Fractures, Foliation, etc.	MINERALIZATION		ASSAY DATA								
From	To			Type	%	Sample	Width	% Ni	% Cu	% Zn	% Fe	% Pb	oz/ton Au	oz/ton Ag
CONT'D	QUARTZ FELDSPAR PORPHYRY:													
387.0	389.0	QFP; 5 paralleling vnlets				A9612	2.0							trace
405.0	407.0	- ; qtz flooding over last foot			70% qrtz	A9613	2.0							trace
407.0	409.0	heavy quartz flooding over whole interval				A9614	2.0							trace
409.0	411.0	QFP; odd vnlet				A9615	2.0							trace
411.0	412.0	- ; 1" qtzvn at 411.0				A9616	1.0							trace
414.5	447.0	Mafic flows; top contact sharp at 30°; predom. pillowed lava's - selvages etc. Usual qtz & qtz carb develop near and in the selvages, particularly near 425', 426.9' and 427.3'												
E N D O F H O L E														
CASING PULLED!														
DIPTEST AT 440' at 55° CORRECTED.														



PAUL'S CUSTOM FIRE ASSAYING LTD.

Phone: Bus. (807) 662-8171
Res. (807) 662-3361

PAUL OKANSKI, Assayer
Box 253, Cochenour, Ontario P0V 1L0

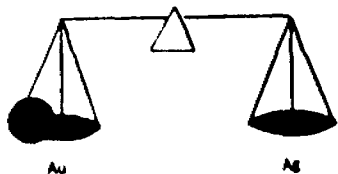
Novamin Resources Inc.

ASSAY CERTIFICATE

Date: Feb. 3-87

	Sample No.	Description	oz/ton Au	oz/ton Ag
1	9501	Tabor	Trace	
2	02		"	
3	03		"	
4	04		"	
5	05		"	
6	06		"	
7	07		"	
8	08		"	
9	09-A		.04	
10	B		.02	
11	10		Trace	
12	11		"	
13	12		"	
14	13		"	
15	14		"	
16	15		"	
17	16		"	
18	17		"	
19	18		"	
20	19		"	
21	20		"	
22	21	<div style="border: 1px solid black; padding: 5px; text-align: center;"> <p>PERORA MINING DIV.</p> <p>SEP - 2 1987</p> <p>789101112131415</p> </div>	"	
23	22		"	
24	23		"	
25	24		"	

Assayer: *Paul Okanski*



PAUL'S CUSTOM FIRE ASSAYING LTD.

Phone: Bus. (807) 662-8171
Res. (807) 662-3361

PAUL OKANSKI, Assayer
Box 253, Cochenour, Ontario P0V 1L0

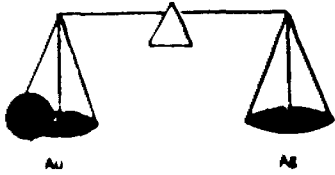
Novamin Resources Inc.

ASSAY CERTIFICATE

Date: Feb. 3-87

	Sample No.	Description	oz/ton Au	oz/ton Ag
1	9525	Tabor	Trace	
2	26		"	
3	27		"	
4				
5				
6				
7				
8				
9				
10				
11				
12				
13				
14				
15				
16				
17				
18				
19				
20				
21				
22				
23				
24				
25				

Assayer: *Paul Okanski*



PAUL'S CUSTOM FIRE ASSAYING LTD.

Phone: Bus. (807) 662-8171
Res. (807) 662-3361

PAUL OKANSKI, Assayer
Box 253, Cochenour, Ontario POV 1L0

Novamin Resources Ltd.

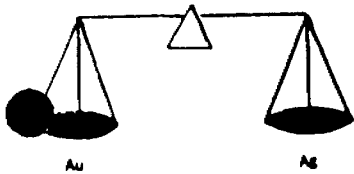
ASSAY CERTIFICATE

Date: Feb. 11-87

Sample No.	Description	oz/ton Au	oz/ton Ag
1	A-9528 Tabor	Trace	
2	29	"	
3	30	"	
4	31	"	
5	32	"	
6	33	"	
7	34	"	
8	35	"	
9	36	"	
10	37	"	
11	38	"	
12	39	"	
13	40	"	
14	41	"	
15	42	"	
16	43	"	
17	44	"	
18	45	"	
19			
20			
21			
22			
23			
24			
25			

int'l
 KENORA
 MINING DIV.
 RECEIVED
 SEP 2 1987
 AM 7:18:10 11:12:15 4:56 PM

Assayer: *Paul Okanski*



PAUL'S CUSTOM FIRE ASSAYING LTD.

Phone: Bus. (807) 662-817
Res. (807) 662-336

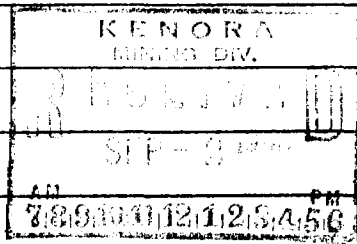
PAUL OKANSKI, Assayer
Box 253, Cochenour, Ontario POV 1L0

Novamin Resources

ASSAY CERTIFICATE

Date: Feb. 18-87

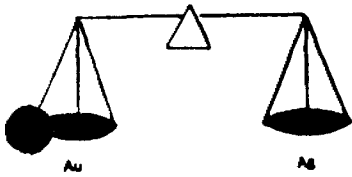
	Sample No.	Description	oz/ton Au	oz/ton Ag
1	9546	Tabor	Trace	
2	47		"	
3	48		"	
4	49		"	
5	50		"	
6	51		"	
7	52		"	
8	53		"	
9	54		"	
10	55		"	
11	56		"	
12	57		"	
13	58		"	
14	59		"	
15	60		"	
16	61		"	
17	62		"	
18	63		"	
19	64		"	
20	65		"	
21	66		"	
22				
23				
24				
25				



Intend.

Assayer:

Paul Okanski



PAUL'S CUSTOM FIRE ASSAYING LTD.

Phone: Bus. (807) 662-817
Res. (807) 662-336

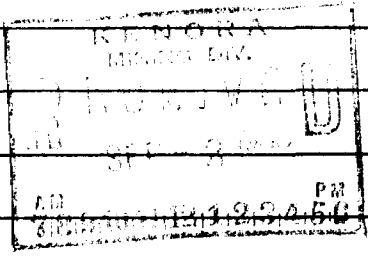
PAUL OKANSKI, Assayer
Box 253, Cochenour, Ontario POV 1L0

Novamin Resources Ltd.

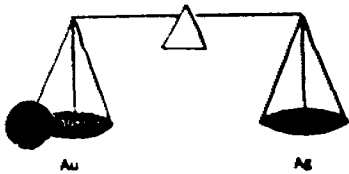
ASSAY CERTIFICATE

Date: Feb. 24-87

	Sample No.	Description	oz/ton Au	oz/ton Ag
1	9569	Tabor	Trace	} TAB 87-4
2	70		"	
3	71		"	
4	72		"	
5	73		"	
6	74		"	
7	75		"	
8	76		"	
9	77		"	
10	78		"	
11	79		"	
12	80		"	
13	81		"	
14	82		.24	
15	9582	Pulp Rerun	.24	
16				
17				
18				
19				
20				
21				
22				
23				
24				
25				



Assayer: Paul Okanski



PAUL'S CUSTOM FIRE ASSAYING LTD.

Phone: Bus. (807) 662-8171
Res. (807) 662-3361

PAUL OKANSKI, Assayer
Box 253, Cochenour, Ontario P0V 1L0

Novanin Resources Inc.

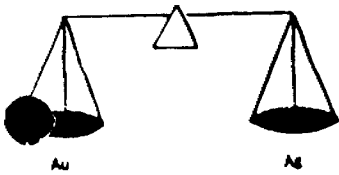
ASSAY CERTIFICATE

Date: Feb. 28-87

	Sample No.	Description	oz/ton Au	oz/ton Ag	
1	A-9503	Tabor	Trace	} TAB #6	
2	99		"		
3	9600		"		
4	01		.01		
5	02		Trace		
6	03		"		
7	04		"		
8	05		"		
9	06		"		
10	07		"		
11	08		"		
12	09		"		
13	10		"		} TAB #7
14	11		"		
15	12		"		
16	13		"		
17	14		"		
18	15		"		
19	16		"		
20					
21					
22					
23					
24					
25					

RENOVA
MINING DIV.
SEP - 28 1987
ALL RIGHTS RESERVED
PM
7891011121314150

Assayer: *Paul Okanski*



PAUL'S CUSTOM FIRE ASSAYING LTD.

Phone: Bus. (807) 662-8171
Res. (807) 662-3361

PAUL OKANSKI, Assayer
Box 253, Cochenour, Ontario POV 1L0

Lawrence, Ontario, Canada

ASSAY CERTIFICATE

Date: Feb. 26-87

	Sample No.	Description	oz/ton Au	oz/ton Ag
1	7-1567	labor	Trace	
2	68		"	
3	8883		"	
4	34		"	
5	85		"	
6	86		"	
7	87		"	
8	88		"	
9	89		"	FAB
10	90		"	87-6
11	91		"	
12	92		"	
13	93		"	
14	94		"	
15	95		"	
16	96		"	
17	97		"	
18				
19				
20				
21				
22				
23				
24				
25				

RECEIVED
MINING DIV.
FEB 27 1987
SP-8
AM 289100121213456

Assayer: Paul Okanski



Name: **Novamin Resources Inc.** Postal Address of Recorded Holder: **Suite 400, 118 Eglinton Avenue West, Toronto, Ontario, M4R 2G4**

Inspector's Office No.: **T-501**

Summary of Work Performance and Distribution of Credits

Total Work Days Cr. claimed 1954	Mining Claim			Mining Claim			Mining Claim		
	Prefix	Number	Work Days Cr.	Prefix	Number	Work Days Cr.	Prefix	Number	Work Days Cr.
for Performance of the following work. (Check one only)	K	777203	200						
		777204	200						
		777205	200						
		777206	200						
		777207	200						
		850268	200						
		850269	200						
		850270	200						

All the work was performed on Mining Claim(s): **K502044** *TABOR LK*

Required Information eg: type of equipment, Names, Addresses, etc. (See Table Below)

Diamond Drill Contractor:
Fontaine Diamond Drilling
Kenora, Ontario

January 26, 1987 to February 26, 1987

RECEIVED
SEP 13 1988
MINING LANDS SECTION
502044

KENORA MINING DIV.
RECEIVED
AUG 30 1988
AM 7:8 9:10 11:12 12:3 4:50 PM

Date of Report: **03/24/87** Recorded Holder or Agent (Signature): *[Signature]*

Certification Verifying Report of Work

I hereby certify that I have a personal and intimate knowledge of the facts set forth in the Report of Work annexed hereto, having performed the work or witnessed same during and/or after its completion and the annexed report is true.

Name and Postal Address of Person Certifying:
David A. Ward, 9 Willamere Drive, Scarborough, Ontario, M1M 1W5

Date Certified: **08/26/88** Certified by (Signature): *[Signature]*

Table of Information/Attachments Required by the Mining Recorder

Type of Work	Specific information per type	Other information (Common to 2 or more types)	Attachments
Manual Work	Nil	Names and addresses of men who performed manual work/operated equipment, together with dates and hours of employment.	Work Sketch: these are required to show the location and extent of work in relation to the nearest claim post.
Shaft Sinking, Drifting or other Lateral Work			
Compressed air, other power driven or mechanical equip.	Type of equipment	Names and addresses of owner or operator together with dates when drilling/stripping done.	
Power Stripping	Type of equipment and amount expended. Note: Proof of actual cost must be submitted within 30 days of recording.		
Diamond or other core drilling	Signed core log showing, footage, diameter of core, number and angles of holes.		Work Sketch (as above) in duplicate
Land Survey	Name and address of Ontario land surveyor.	Nil	Nil



Ministry of
Natural
Resources
Ontario

Report
of Work

DOCUMENT No.
W8801-224

Instructions - Supply required data on a separate form for each type of work to be recorded (see table below).
- For Geo-technical work use form no. 1362 "Report of Work (Geological, Geophysical, Geochemical and Expenditures)".

The Mining Act **AFRO**

Melvind TP.

Name and Postal Address of Recorder Holder: **Novamin Resources Inc.**
 Suite 400, 118 Eglinton Avenue West, Toronto, Ontario, M4R 2G4
 Prospector's Licence No. **T-501**

Summary of Work Performance and Distribution of Credits

Total Work Days Cr. claimed 1954	Mining Claim			Mining Claim			Mining Claim		
	Prefix	Number	Work Days Cr.	Prefix	Number	Work Days Cr.	Prefix	Number	Work Days Cr.
for Performance of the following work. (Check one only)	K	777203	200						
<input type="checkbox"/> Manual Work		777204	200						
<input type="checkbox"/> Shaft Sinking Drifting or other Lateral Work.		777205	200						
<input type="checkbox"/> Compressed Air, other Power driven or mechanical equip.		777206	200						
<input type="checkbox"/> Power Stripping		777207	200						
<input checked="" type="checkbox"/> Diamond or other Core drilling		850268	200						
<input type="checkbox"/> Land Survey		850269	200						
		850270	200						

All the work was performed on Mining Claim(s): **K502044**

Required Information eg: type of equipment, Names, Addresses, etc. (See Table Below)

Diamond Drill Contractor:

Fontaine Diamond Drilling
Kenora, Ontario

January 26, 1987 to February 26, 1987

ONTARIO GEOLOGICAL SURVEY
ASSESSMENT FILES
OFFICE
SEP 13 1988
RECEIVED

KENORA
MINING DIV.
RECEIVED
AUG 30 1988
AM 7:89 10:11 12:12 3:45 6 PM

502044

Date of Report: **03/24/87**
 Recorder Holder or Agent (Signature): *[Signature]*

Certification Verifying Report of Work

I hereby certify that I have a personal and intimate knowledge of the facts set forth in the Report of Work annexed hereto, having performed the work or witnessed same during and/or after its completion and the annexed report is true.

Name and Postal Address of Person Certifying:
David A. Ward, 9 Willamere Drive, Scarborough, Ontario, M1M 1W5
 Date Certified: **03/26/88**
 Certified by (Signature): *[Signature]*

Table of Information/Attachments Required by the Mining Recorder

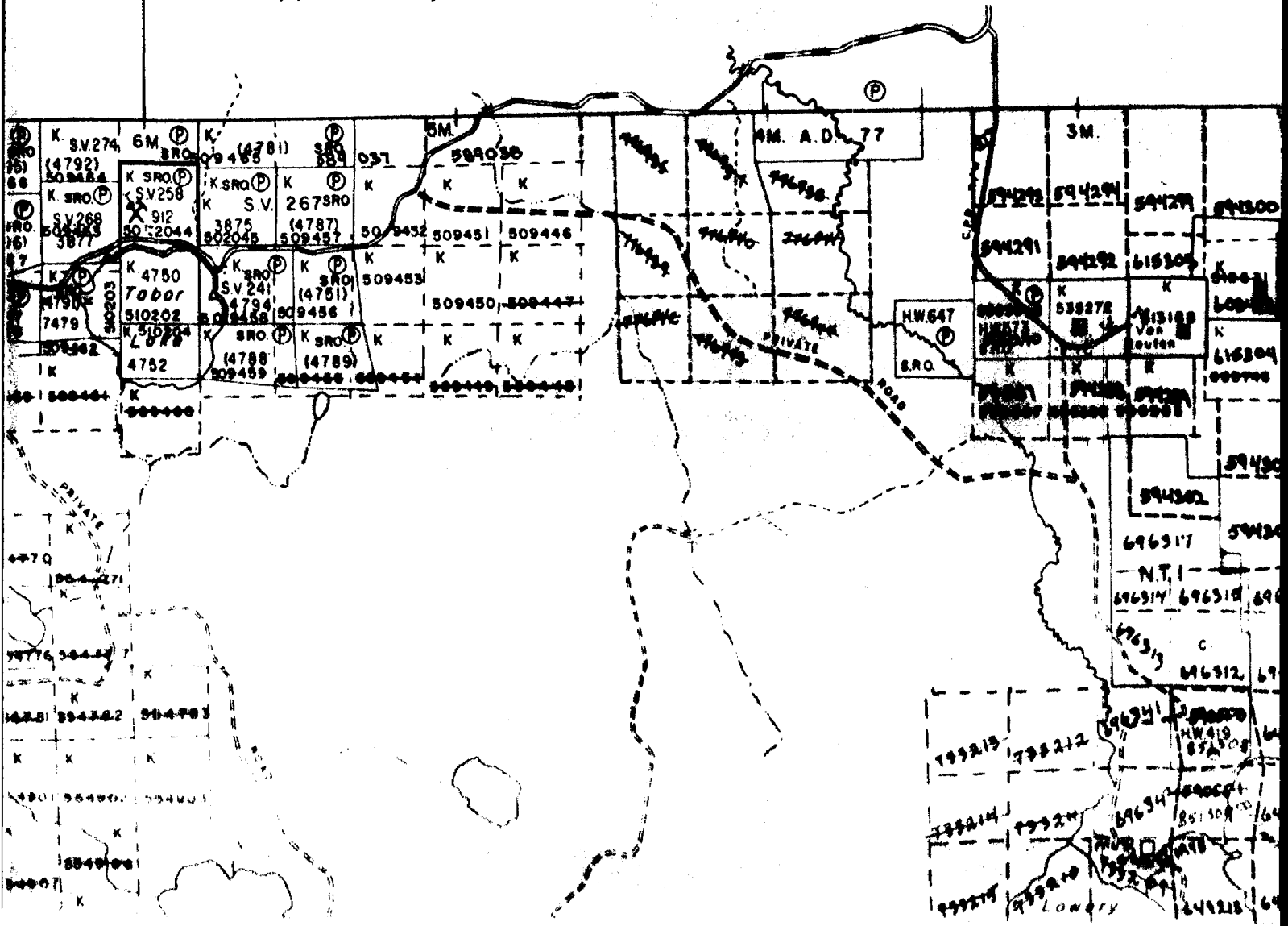
Type of Work	Specific information per type	Other information (Common to 2 or more types)	Attachments
Manual Work	Nil	Names and addresses of men who performed manual work/operated equipment, together with dates and hours of employment.	Work Sketch: these are required to show the location and extent of work in relation to the nearest claim post.
Shaft Sinking, Drifting or other Lateral Work			
Compressed air, other power driven or mechanical equip.	Type of equipment	Names and addresses of owner or operator together with dates when drilling/stripping done.	
Power Stripping	Type of equipment and amount expended. Note: Proof of actual cost must be submitted within 30 days of recording.		
Diamond or other core drilling	Signed core log showing, footage, diameter of core, number and angles of holes.		Work Sketch (as above) in duplicate
Land Survey	Name and address of Ontario land surveyor.	Nil	Nil

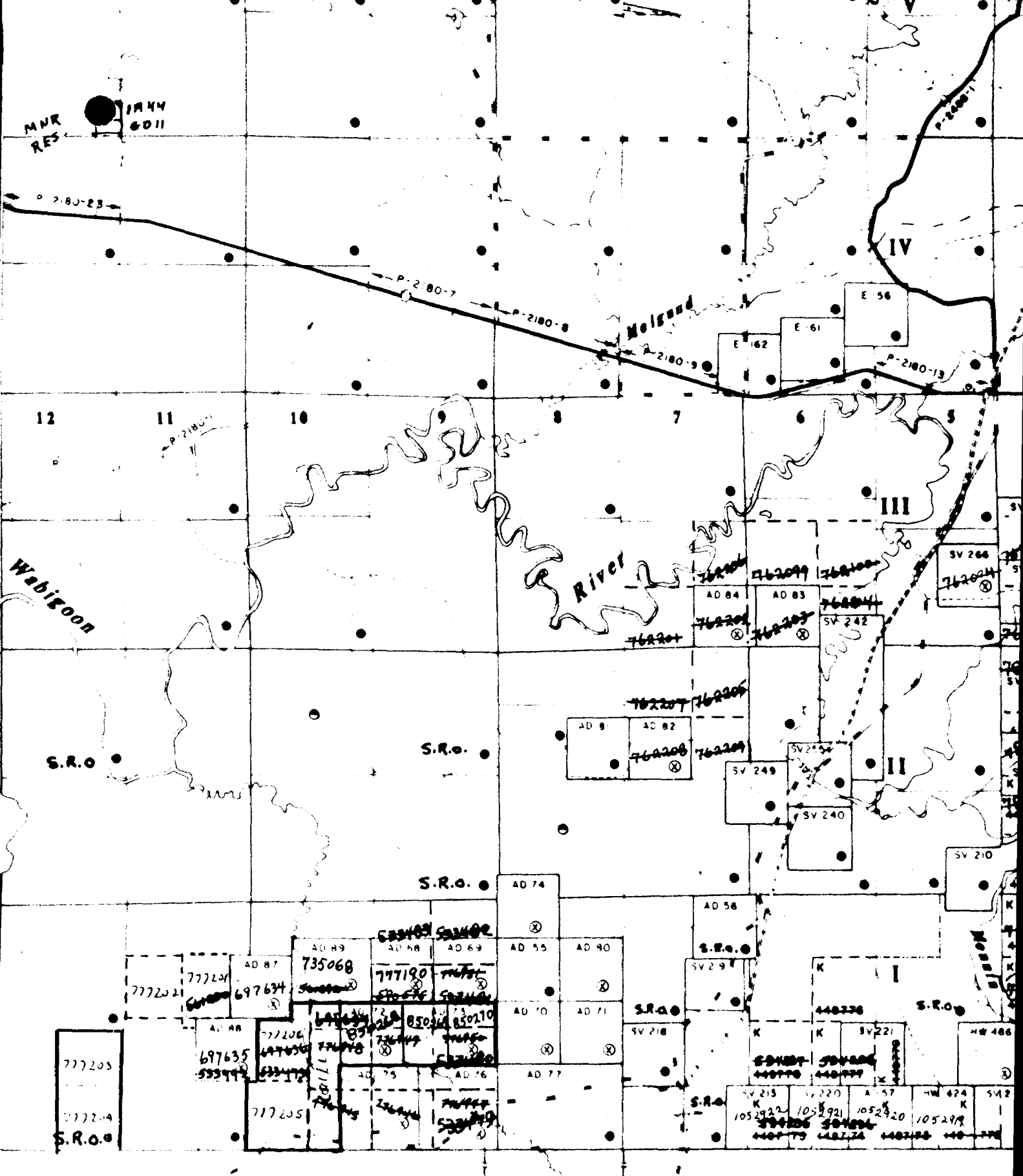
MELGUND TWP.

FOR STATUS REFER TO TWP PLAT

No. M2011

TABOR LAKE M 2653
Aug 30/88





MELGUND TWP. M 2011

AUG 30/88