



52F10NW0071 2.8245 CONTACT BAY (WABIGOO

010

REPORT ON HARRISON

**ULTRABASIC-ASSOCIATED Cu-Ni-Co - PRECIOUS METAL PROPERTY
CONTACT BAY, LAKE WABIGOON (Dryden) AREA
KENORA MINING DIVISION, ONTARIO**

NTS 52F10, PLAN NO. M2737

LATITUDE 49° 40.5'N LONGITUDE 92° 46.0'W

FOR

AMERICAN VOLCANO MINERALS CORP.

AND

MCCONNELL-PEEL RESOURCES LTD.

VANCOUVER, BRITISH COLUMBIA

BY

DR. W.D. GROVES, P.Eng.

ARCHAEAN RESOURCES CORP.

VANCOUVER, BRITISH COLUMBIA

DATE: FIELDWORK - 17 NOVEMBER 1983

REPORT DATED 15 OCTOBER 1984



PAGE

1. SUMMARY/ABSTRACT	1
2. PROPERTY VISIT, SOURCES FOR REPORT	2
3. LOCATION, ACCESS, PHYSIOGRAPHY	4
4. CLAIMS, INFORMATION	5
5. HISTORY AND GEOLOGY OF AREA AND PROPERTY	6
6. BUDGET FOR PROPOSED INITIAL WORK PROGRAM	8
7. CERTIFICATE	9
8. REFERENCES	10

LIST OF FIGURES

1. Location Map Dryden-Wabigoon Area
Scale 1 inch = 30 miles
2. Area Geology Showing Greenstone-Tuff
Arch, Ultrabasics and Granite
Scale 1 inch = 28 miles
3. Regional Geology, Dryden Wabigoon Area,
Map No. 50E, District of Kenora, Ontario
After Scatterly, 1941. Scale 1 inch = 1 mile
4. Claim Map NTS 52F10, Plan No. M2737
Scale 2 inches = 1 mile
5. Survey Map of Beaver Pond Claim
No. L203509 Scale 1 inch = 200 ft.

1. SUMMARY/ABSTRACT

An interrupted northeast striking ultra basic corridor, one to two miles wide, outcrops in the southern portion of the Superior Craton in the Dryden, Ontario area. Occurrences appear to be stepped by a series of major northwest by west-striking right hand tear faults parallelling the long axis of an Archean basic to felsic volcanic greenstone arch. The ultra basic terrane may mark the now disrupted locus of an ancient intracratonic rift into which upper mantle material upwelled or the shock ring around a large ancient meteor impact. The Greenstone Arch rocks are also intruded by intermediate to acid plutons, the major ones post-tectonic in age. Whether the ultrabasics are in fault or intrusive contact with these plutons is yet to be established.

The ultra basic rocks are massive to locally texturized in the northwest by west direction and locally parallel to the long axis of the Greenstone Arch. Compositions are norite to anorthosite gabbro, cut by serpentized shears containing asbestos and in places fine disseminated native copper. Disseminated syngenetic sulphides are present in the ultra basic rock. However, shear-zones, magmatic segregations and contacts with both meta volcanics and post-tectonic plutons can locally up-grade sulphide concentrations. Three very significant Mag/EM anomalies, one on the Key "Beaver Pond" claim of the Harrison group, another near the west shore of Mile Lake, two miles to the southwest, and a third centered 400' N of a small point of land on Contact Bay east shore (drilled by Falconbridge in 1955), have had some shallow drilling and trenching done, with reports of massive sulphide intersections in the core. The author saw sulphides in a narrow shear in gabbro at the west end of the Beaver Pond, including nickel-bearing pyrrhotite, pyrite and chalcopyrite.

Assays from previous activity by other companies report the presence of Ni, Cu, Co, Bismuth, Silver and fractional-ounce amounts of platinum metals and gold in sulphides in the ultrabasics. The author has seen a small piece of core from the Nichro Mines' drilling, reported on by Michaelson. In it, 1/2% or so of a white metallic sectile mineral in interstitial flat silvery particles was noted, possible native bismuth or an arsenide. On a regional basis ultrabasic-associated

sulphides in the Superior Craton have been found to have some associated platinum-metal values: for example, the UMEX Cu-Pt mine at Pickle Lake, platinum values in pyrrhotite and norite at Inco Shebandowan. The Beaver Pond claim of the Harrison property visited by the author, is in the contact area of the ultrabasic (S & W) and greenstone-granite (N & E), with possible injections of ultrabasic-derived material along the E-W bounding fault system. A careful evaluation of the property is in order to determine structural or segregation features giving rise to the massive-sulphide-type local EM anomalies in the Beaver Pond claim area, and to determine both base metal and associated precious metal values in the sulphide phase. Long axis of the geophysical anomalies is generally E-W, parallel to the main faults. Geophysicist Presunka has reviewed the EM data, but since the sending station's direction was not noted on the maps, he was unable to do a detailed interpretation without re-establishing data in the field. Mapping, trenching, further EM work and follow-up drilling on EM anomalies in the ultra basic unit is recommended. Since the time of the visit, the author understands the claimed area has been extended to cover other showings in the area.

Numerous historic small gold mines and occurrences are noted in the area, such as the old Rognon gold mine on the west shore of Contact Bay. These are associated with sulphide shears and quartz veins in the meta volcanics. Main regional gold association is felt to be with or near synvolcanic felsic intrusives units in the greenstone complex. Platinum metal values are associated with the ultra basic belt.

This report provides for a preliminary evaluation of the property, which the author believes to have an interesting potential, both on the basis of the rather fragmentary state of the data base available from previous work, plus general geological interest in the possibility of platinum metal values associated with ultrabasics in the Superior craton.

2. PROPERTY VISIT, SOURCES FOR REPORT

The author made a 1-day visit to the Harrison property November 17, 1983, during his

November 16-18 visit to the area. The discovery showing and a nearby blast-pit showing at the west end of the Beaver Pond were sampled, and the position of some of the drill holes close to the discovery area was noted. Freeze up was just beginning to cause ice-skims in shallow bays. There was 1/2" of snow on the ground, but not enough to obscure showings in the Beaver Pond area pointed out by the owner, in which rocks were dark in color and had thawed free. Author was accompanied by Mr. John P. Harrison of Eagle Lake, Ontario, prospector and property owner, who also supplied considerable information on the history of the property and the general Dryden area. Mr. Harrison had been present during much of the previous blast-trenching, geophysical surveys and diamond drilling on both his own and neighboring properties. The author is indebted to him for having been shown by him a large file of drill logs, old reports and written and verbal historic information on the property area. On the second day, Mr. Harrison and the author sampled a stockpile reported to have been left behind from a bulk sampling of the Mile Lake property by US Consultant Dr. A.S. Michealson for Nichro Mines. The same material was also assayed by Energy, Mines and Resources in Ottawa to help extend familiarity with area mineralogy. The result was a mineral occurrence location noted on the Province of Ontario Resources Map. Mr. Harrison also showed the author the ultra basic rock on a point of Contact Bay which was the closest shore point to the 1955 Falconbridge drill station through the ice on a large anomaly just offshore in the bay.

Regional geology mapped by Satterly (1941) of the Ontario Department of Mines shows disposition of major rock units in the area. Geophysical data and hole logs by Nichro Mines, Ontario Dept. of Mines, Beth Canada, Ontario Dept. of Mines Regional aeromag maps, and a ground magnetometer study by Steep Rock Mines and a report by Thunder Bay consultant Bartley, as well as old Ontario Dept. of Mines publications on deposits in the general area were also made reference to.

Core logged by the author in Vancouver in October 1984, resulting from the 1984 Assessment Work drilling on the property by Mr. Andy Babiy (one 250' hole, another

shorter one drilled through the ice in Contact Bay) showed a section of banded andesitic tuffs and flows - so, related to the Greenstone Arch rocks rather than the ultrabasics. The core was barren of mineral values, save for a couple of hairline sulphide veinlets in joints.

3. LOCATION, ACCESS, PHYSIOGRAPHY

Principal town in the area is Dryden, Ontario, in the northwest portion of the province. Dryden, near the Great Lakes Paper Corp. pulp mill on the Wabigoon River, is on the northwest corner of Wabigoon Lake, a 15 mile east-west by 5 mile NS lake, from which Contact Bay extends south on east from the west end of the lake. Access on this trip was by 2WD pickup on paved and good forestry roads to the Great Lakes Paper Company's log-stockpiling dock on the west shore of Contact Bay, thence by foot 2 claim lengths to the "discovery showings" area on the Beaver Pond Claim. The discovery showings are on the southwest corner of the N70°W elongate Beaver Pond, whose small outlet creek drains west, then south into the east side of Contact Bay.

Dryden has a commercial jet airport. Helicopter and float plane service are also available in the area.

Local surface physiography consists of rather flat glacial sand and loam, and wave-levelled gravel moraine terraces associated with the Lake Agassiz post glacial flooding period, with occasional outcrops of the ice-planed Shield rocks. Overburden depth is usually in the order of 30 feet, with streams and glacially sculpted low rounded knolls of the old Superior Craton peneplane showing through, giving local bedrock exposure.

Because of flat topography and sandy till, road building costs are minimal, but diamond drilling away from rock lake bottoms or knolls requires 20-60' of casing through till. Overburden is not sufficient to mask major EM and magnetic bedrock anomalies.

The region is partially forested with 8" jackpine, spruce, birch and cedar, and partly logged off or covered with small re-growth. Climate is continental: cold, snowy winters, during which lakes and rivers freeze, late springs and humid summers. Winter ice travel by ski plane and skidoos and through-the-ice drilling facilitates exploration logistics.

Historic gold mining and farming and forestry and trapping has created an infrastructure which greatly facilitates access and logistics, as well as a pool of hardy local labour versed in mining activities.

4. CLAIMS INFORMATION

Claims in the Mile Lake-east side of Contact Bay area are shown on Ontario claim map M2737 (Fig. 4). Claims are in the mid-east corner of the Plan. Figure 5 is a survey map of the Beaver Pond Claim #203509.

The key Harrison claim (#203509), the so-called Beaver Pond claim, on which the discovery showings and some of the drilling is located, has been surveyed and brought to lease. Messrs. Harrison and Witowicz are the registered owners. Fourteen claims surrounding this key claim are also shown, recorded in August, 1983.

One and a half miles southwest is a 5-claim lease block belonging to Nichro Mines Ltd. of Indiana. Mr. Harrison has a 10% interest in these lease claims.

The Nichro ground is also shown surrounded by claims. A third set of claims staked October-November, 1983, including the one north of 70B135 have recently been staked by the Harrison interests.

The Beaver Pond claim, those shown as staked August, 1983, plus those staked October-November, 1983, constitutes the area of interest. Specifically, the claim

block consists of the following 21 claims, numbered 706138, 706137, 706013, 706140, 706134, 706133, 706132, 706131, 706070, 706072, 706136, 706139, 706129, 706130, 203509 (surveyed), 706071, 706124, 706125, 706126, 706127, 706128. These form a contiguous block.

McConnell Peel Ltd. of Vancouver has secured an option on the 21 claim group, and is joint venturing them with American Volcano Minerals Corp., of Vancouver.

5. HISTORY AND GEOLOGY OF AREA AND PROPERTY

Since the first discovery in the 1870's of gold-quartz in the Lake of the Woods area, the southern edge of the Superior Craton has been intensively prospected for gold. Hundreds of discoveries of small gold-quartz veins in the greenstones and related intrusives were made. In the Dryden area, small mines near Goldrock and Manitou had significant gold production. Regionally, Red Lake, Pickle Lake, and other areas are now famous.

Interest in massive-sulphide type occurrences in ultra basic rocks initially for copper and nickel, by majors such as Inco and Falconbridge, is more recent, dating from market and processing development for nickel, copper, cobalt, plus associated precious metal values from ultrabasic ores. In the general area, in 1955, Falconbridge drilled one hole through the ice on Contact Bay on a large magnetic and EM anomaly. The hole was stopped by the post-Korean war cessation of stockpile-buying and noncommittant support prices on copper, nickel and cobalt. In the 1970's, a small Indiana company, Nichro Mines Ltd. bought a Winkie drill and drilled about 30 holes from 1-200 feet in depth in a zone in the ultra basic belt on the west shore of Mile Lake. A block of 5 lease claims attest to this interest. In 1972 a Chicago consultant and specialist in platinum metals, Dr. A.S. Michaelson, visited the lease, logged drill core and had 2 tons of the material shipped to Chicago for testing. His report was made available to the author through Mr. Harrison, who retains a 10% interest in the Nichro property. During the same time period,

Harrison et al, using Nichro's drill, drilled several Winkie holes around the Beaver Pond showing area on Harrison and Woitowicz Lease claim 203509 (the claim the author inspected). Nichro had an option on this claim at the time.

Ni, Cu, Cu, Pt metals, Au, Ag and Bi values were reported from core assays. Michealson's impression was that the area contained significant values in precious metals, along with Cu, Ni, Co, Bi, etc.

Some of the Nichro core was re-logged in 1975 by Ontario Dept. of Mines geologists. The author was able to review these logs.

In 1972, Beth Canada briefly optioned the Harrison claims, and geological and geophysical work was done. Geophysical maps show a very substantial anomaly, or rather 2 anomalies, long axis N75⁰W, one just south and one just north of this discovery showings at the Beaver Pond.

6. BUDGET FOR PROPOSED-INITIAL WORK PROGRAM

Phase I- Reconnaissance plus updating of present data base.

Reconfirmation of present geophysical data by more field geophysical check-traverses, including of geographic tie-ons, (including report). \$ 10,000.00

Geological tie-in of local and regional geological structures to geophysical results, including mapping, fieldwork, report, establishing drill targets. 10,000.00

Incidentals: Transportation, assays 2,500.00

\$ 22,500.00

Contingency, approximately 10% 2,500.00

Total Phase I: \$ 25,000.00

Phase 2 - Drilling two 500 foot test holes.

Drilling two 500 foot test holes
Diamond drilling with N-Core, one hole in an ultrabasics anomaly and one on a Pond area anomaly.

1000' @ \$40/foot, includes cost of logging, sample assays \$ 40,000.00

Test Work: take split 1/2 of core in sulphide - bearing core, flotation-concentration of sulphides, assay of sulphides by Ni-flux Haileybury method for PM's 5,000.00

\$ 45,000.00

Contingency, approximately 10% 5,000.00

\$ 50,000.00

TOTAL PROGRAM -PHASE 1 and 2 \$ 75,000.00

At the end of Phase 2, property can be evaluated for a major drill program if results warrant.

Yours respectfully,

William D. Groves

William D. Groves, Ph.D., P.Eng.

CERTIFICATE

I. WILLIAM D. GROVES, do hereby certify that:

1. I am a consulting engineer (geological) with an office at #200-675 West Hastings Street, Vancouver, British Columbia, V6B 4Z1.
2. I am a graduate of the University of British Columbia, (B.A.Sc. in Geological Engineering, 1960). I am a graduate of the University of Alberta, B.Sc., in Chemical Engineering in 1962, and of the University of British Columbia with a Ph.D. in Chemical Engineering 1971.
3. I am a registered Professional Engineer in the Province of British Columbia.
4. I have practiced my profession since 1960.
5. I examined the Harrison property on November 17, 1983 in addition to regional geological, geophysical and topography maps of the area, accompanied by owner/pro prospector Mr. John P. Harrison of Eagle Lake, Ontario.
6. I have not received, directly or indirectly, nor do I expect to receive any interest, direct or indirect, in the Harrison property, nor do I beneficially own, directly or indirectly, any securities of American Volcano Minerals Corp. or McConnell-Peel Resources Ltd.
7. I hereby consent to the use of this report in a Prospectus or Statement of Material Facts to be filed with the Vancouver Stock Exchange and Superintendent of Brokers for British Columbia.

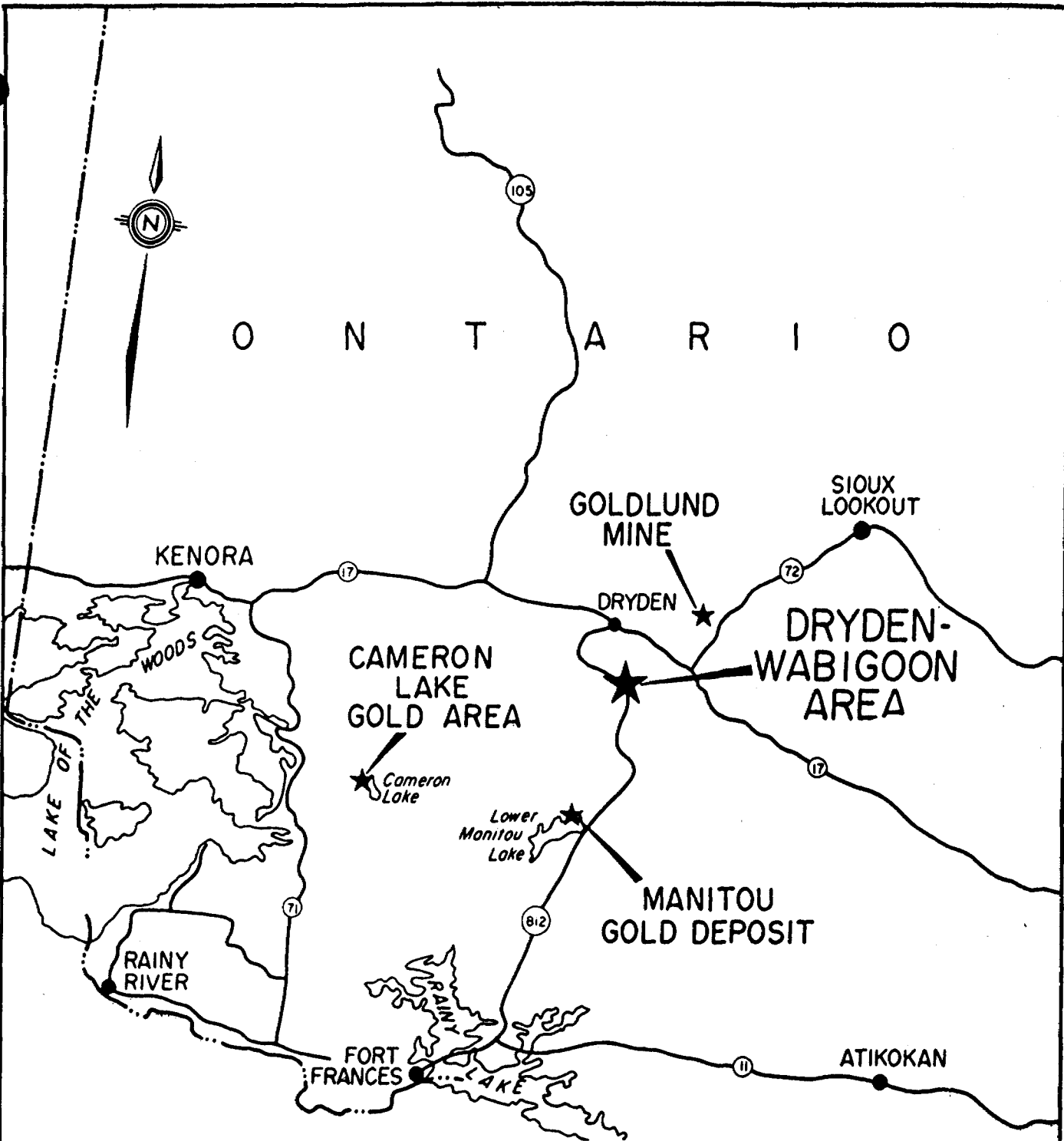
Respectfully submitted,


W.D. Groves, P.Eng.

October 15, 1984

REFERENCES

1. Claim Map NTS 52 F10, Plan No. M2737. Wabigoon-Dryden Area, Ontario.
2. Scatterly, J. Volume 1, Part 2 Ontario Department of Mines Annual Report, 1941. Accompanied by Map No. 50E: Dryden-Wabigoon Area, Scale 1 inch=1 mile. (Figure 3).
3. Map 2440. Ontario Geological Survey: Scale 1 inch=28 miles (1:600,000). Ontario Ministry of Natural Resources (Figure 2).
4. Personal communications with Mr. John P. Harrison, Claim owner and prospector of Eagle River, Ontario, through whom access to A.E. Michelson, Beth Canada et al drill logs, geophysical map.



M I N N E S O T A

FIG. 1 LOCATION MAP
 DRYDEN - WABIGOON AREA

Scale: 1 in. = 30 miles



KENORA, ONTARIO

W.D.M.



LEGEND

- Unit 1 - Greenstone
- Unit 2 - Tuffs
- Unit 3 - Sediments
- Unit 4 - Ultrabasics
- Unit 5 - Granite



93°

N
E
S

48°

FIG. 2 AREA GEOLOGY

(Showing Greenstone/Tuff Arch, Ultrabasics and Granite)

Scale: 1 in. = 28 miles

W.D.H.

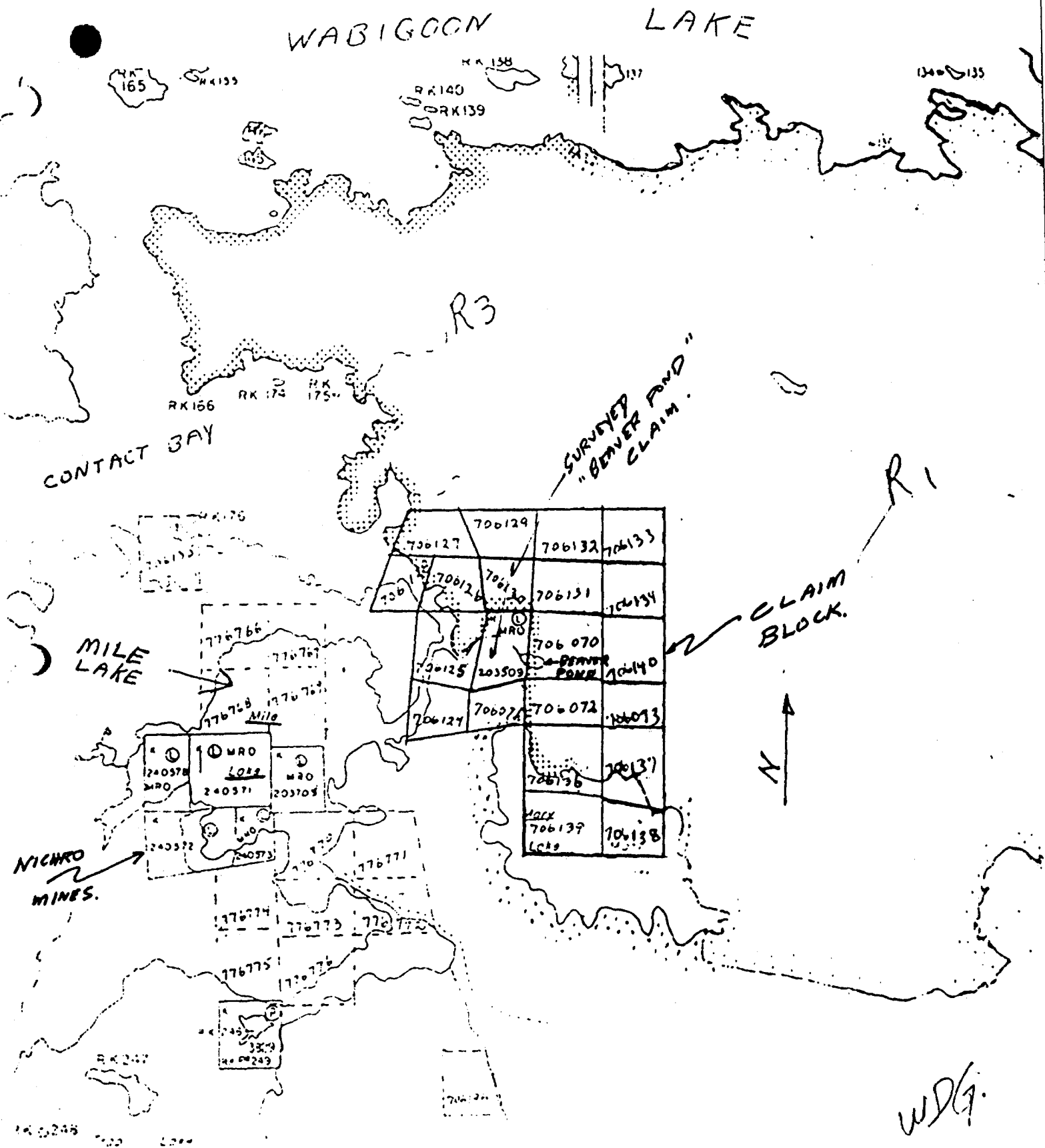


FIG. 4 CLAIM MAP

NTS 52 F10
Plan No. M2737

Scale: 2 in. = 1 mile

PINE N20°W 9.3'
 PINE N50°E 21.1'
 PINE S50°E 24.0'
 ROCK POST W.P.

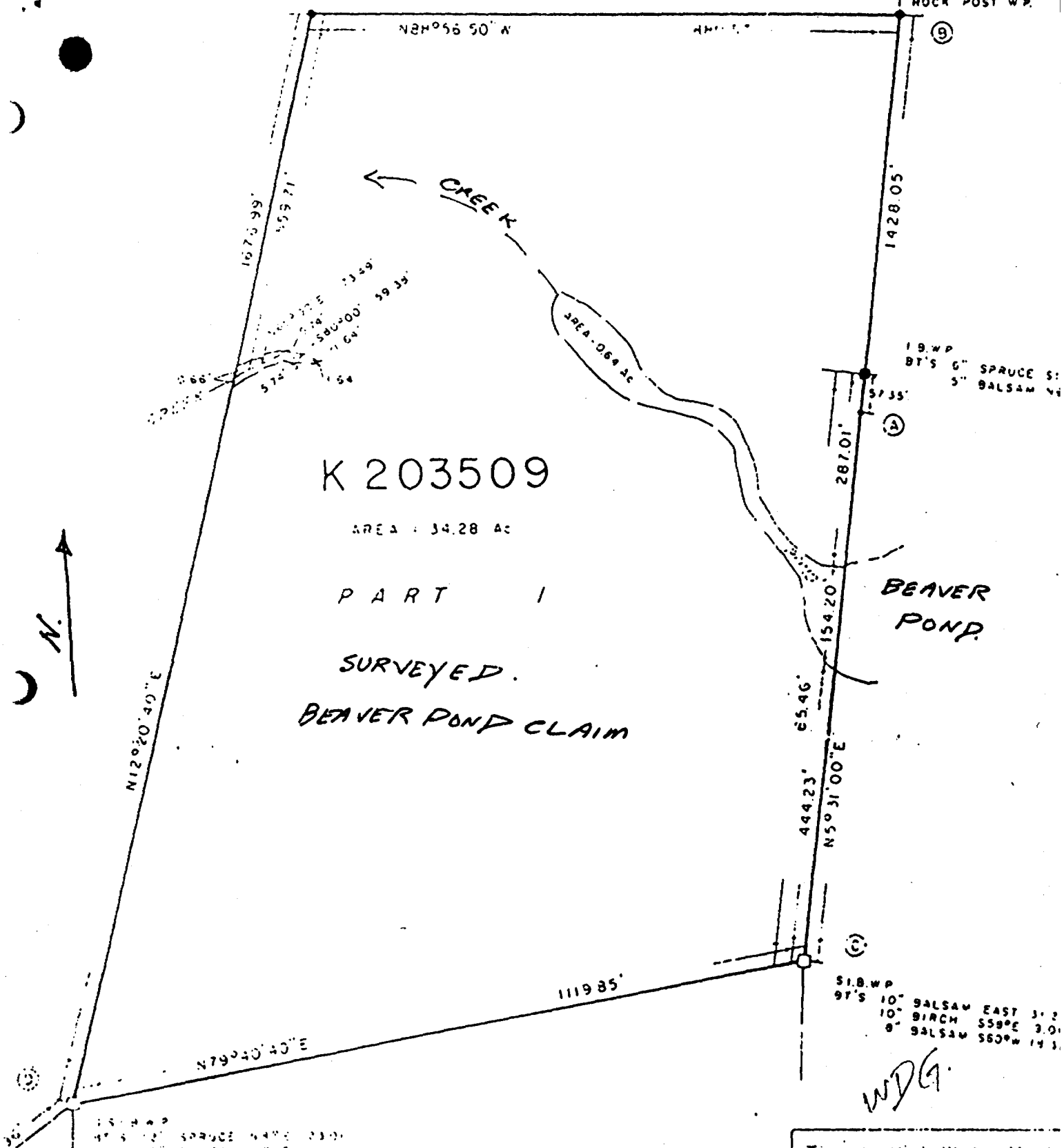


FIG. 5 SURVEY MAP OF BEAVER POND CLAIM

Scale: 1 in. = 200 ft.

Ties to High Water Mark of Pond
 January 15, 1981

INSTRUMENT AT STATION	
BEARING	DISTANCE
S5°02'W	224.74'
S15°05'W	231.30'

K 203509	PART I	34.28 ac
----------	--------	----------



52F10NW0071 2.0245 CONTACT BAY (WABIGOO)

020

REPORT ON
HARRISON PROPERTY
WABIGOON LAKE AREA
KENORA MINING DIVISION
ONTARIO

prepared by:

J. W. Redden, B. Sc.
Box 117
Wabigoon, Ont.
POV 2W0

June 8, 1985

INTRODUCTION

The author was requested by Mr. A. Babiy of Kamloops, B.C. to review all available data on the Harrison Property. This report and the accompanying maps are the results of this review.

LOCATION AND ACCESS

The property is located 7 miles south southeast of Dryden, Ontario. Dryden is located on the Trans Canada Highway approximately midway between Winnipeg, Manitoba and Thunder Bay, Ontario.

Access is most convenient by boat from Dryden. Boats, motors and other supplies can be rented from any of numerous firms in the Dryden area. Under certain conditions (e.g. high winds) launch points on Wabigoon Lake closer to the property would provide a safer passage.

PREVIOUS WORK

The earliest work in the general area was in the 1890's for gold. Since that time exploration has been carried out for a wide variety of minerals and metals.

In the immediate vicinity of the property the earliest work is reported to have been carried out during the 1950's but no records are available. Steep Rock Iron Mines Ltd. conducted a magnetometer survey and test pitting in 1970. A recontouring of the survey is shown on map 85-02A. Subsequently the property was explored by Nichro Mines Ltd. by drilling. Nichro still holds 5 claims under lease 1.5 miles to the southwest of the present property. John Harrison and M. Woitowicz leased claim K203509 at this same time. An AEM survey was flown over the area in 1978 for Hudson's Bay Oil and Gas Co. Ltd.

Canada Mining Ltd. carried out a geophysical, geological and geochemical programme in the vicinity of K203509 in 1980. A portion of the data is summarized on accompanying map 85-02B.

The 16 claims adjacent to K203509 were recorded April 19, 1983. Work to date has consisted of two diamond drill holes, a report by Dr. W. D. Groves, P. Eng. and this report. The 16 claims are in good standing to April 19, 1986, at which time an additional 640 days of assessment work is due.

The 16 claims are numbered K706070, 072, 073, 125, 126, 127, 128, 129, 130, 131, 132, 133, 134, 136, 137, and 140.

GENERAL GEOLOGY

The area was mapped by J. Satterly for the Ontario Department of Mines during 1939 and 1940. The data was published as "Geology of the Dryden - Wabigoon Area" by J. Satterly, Ont. Dept. Mines, Vol. X, 1941 part 2, accompanied by map No. 50e, 1"=1 mi. The following description of the geology is based on this report plus data from the Resident Geologist's Office in Kenora and from John Harrison of Eagle River, Ontario.

The oldest rocks on the claims consist of basaltic flows and fragmentals with occasional felsic fragmental horizons. The basaltic rocks have been metamorphosed to a typically hornblende-rich somewhat schistose rock. The felsic horizons are also somewhat schistose with the presence of sericite.

A mafic intrusive underlying the southwest part of the claim group is gabbroic with occasional anorthositic phases due to segregation of the feldspars. Hybrid rock types occur adjacent to the volcanics. Alteration consisting of serpentine and/or talc occurs sporadically.

The youngest rock in the area is a chloritized biotite-quartz diorite. This occurs as a $\frac{1}{4}$ by 1 mile body occurring to the north of the gabbro.

On the claim group the gabbro occupies the southern two-thirds of claim K203509 and the area to the west and south. The diorite occupies the northern third of K203509 and to the north and west of K203509 for $\frac{1}{4}$ mile and to the northwest beyond the claim group. The volcanics occupy the remainder -- the south, east and most northerly portions of the claim group.

STRUCTURAL GEOLOGY

No direct data is available on which to interpret the structure. The geophysics however does display certain features which indicates structural features.

The magnetic patterns indicate both the gabbro and the diorite are inhomogenous bodies. The VLF also indicates shearing to be present.

The magnetic patterns also indicate a higher magnetite contact in the volcanics adjacent to the diorite -- perhaps a contact metamorphic aureole.

Electro magnetic data indicates a significant WNW-ESE shear along the gabbro/diorite contact. At the common contact with the volcanics this shear splits into two. One trending towards the SE, the other ENE.

ECONOMIC GEOLOGY

Copper and nickel are known to occur on K203509. Assays of 0.185% Cu and .08% Ni across 24 feet are reported from Nichro Mines Ltd. drill hole No. 2. A second Cu-Ni occurrence is shown on one map in the Assessment Files as being located about $\frac{1}{4}$ mile northwest of K203509.

The presence of cobalt and platinum group metals plus gold and silver values have been reported but documentation was not available to the author. Similarly, gold associated with chalcopyrite in quartz veins is said to occur on the claim group.

Geologically the area is favourable for the occurrence of copper-nickel deposits with associated metals (Co, Pt) and also for gold deposits.

CONCLUSIONS

Available data indicate the presence of copper and nickel associated with gabbro and the presence of gold in quartz veins. Additional work is recommended to determine the actual metal content of the known showings. The geological relationships of the mineralization and the geophysical responses of the various types of mineralization and rock types must be characterized. Subsequent exploration would be directed according to this preliminary work.

RECOMMENDATIONS

Phase I	a. preliminary geological and geophysical mapping of mineralized zones	
	b. sampling and analyses	<u>5000.00</u>
Total Phase I		\$5000.00
Phase II	a. detailed geological and geophysical mapping of property	17000.00
	b. sampling and analyses	5000.00
	Contingency	<u>3000.00</u>
Total Phase II		\$25000.00
Phase III	a. stripping and trenching	7000.00
	b. rock trenching and test pitting	7000.00
	c. sampling and analyses	10000.00
	Contingency	<u>6000.00</u>
Total Phase III		\$30000.00
Total Programme -- Phases I, II, and III		<u>\$60000.00</u>

Upon completion of Phase III, the location and scope of additional stripping and diamond drilling will be determined.

Phase I will contribute 20 days per claim assessment work credits.

Phase II will contribute 80 days per claim assessment work credits.

Phase III will contribute 48 days per claim assessment work credits.

Completion of Phase III will fulfill all assessment work requirements on the 16 claims.

To obtain a lease on the ground a legal survey of the claims by a licenced Ontario Land Surveyor will be required prior to April 19, 1994. Estimated cost of the survey is \$10-20,000.00.



Ministry of
Natural
Resources

Report of Work
(Geophysical, Geological,
Geochemical and Expenditures)

F.M

Instructions - Please type or print

June 20 # 96-8.5

2
Min



52F10NW0071 2.8245 CONTACT BAY (WABIGOO)

900

Type of Survey(s)

COMPILATION STUD

Claim Holder(s)

J. HAWES

BULLER LAKE G. 2576

Prospector's Licence No.

H1145-8

Address

Box 249 Stn A Winnipeg Man R3K 2A1

Survey Company

J. W. Redden

Date of Survey (from & to)

Total Miles of line Cut

Day | Mo. | Yr. | Day | Mo. | Yr.

Name and Address of Author (of Geo Technical report)

J. W. Redden Wabigoon Out

Credits Requested per Each Claim in Columns at right

Mining Claims Traversed (List in numerical sequence)

Special Provisions	Geophysical	Days per Claim
For first survey: Enter 40 days. (This includes line cutting)	- Electromagnetic	
	- Magnetometer	
	- Radiometric	
	- Other	
For each additional survey using the same grid: Enter 20 days (for each)	Geological	
	Geochemical	
Man Days Complete reverse side and enter total(s) here	Geophysical	Days per Claim
	- Electromagnetic	
	- Magnetometer	
	- Radiometric	
	- Other	
	Geological	
Airborne Credits Note: Special provisions credits do not apply to Airborne Surveys.	Geophysical	Days per Claim
	Electromagnetic	
	Magnetometer	
	Radiometric	

Prefix	Mining Claim		Expend. Days Cr.
	Number		
K	706070		8
	072		6
	073		6
	125		6
	126		6
	127		6
	128		6
	129		6
	130		6
	131		6
	132		6
	133		6
	134		6
	136		6
	137		6
	140		8

RECEIVED
MAY 08 1985
MINING LANDS SECTION

KENORA MINING DIV.
RECEIVED
APR 29 1985
AM 7 8 9 10 11 12 1 2 3 4 5 6 PM

Expenditures (excludes power stripping)

Type of Work Performed

Performed on Claim(s)

Calculation of Expenditure Days Credits

Total Expenditures \div Total Days Credits =

\$ 1500 \div 15 = 100

Instructions
Total Days Credits may be apportioned at the claim holder's choice. Enter number of days credits per claim selected in columns at right.

706070

Total number of mining claims covered by this report of work 16

For Office Use Only

Total Days Cr. Recorded 100

Date Recorded Apr. 29/85

Date Approved as Recorded J. 85.11.8

Mining Recorder [Signature]

Branch Director [Signature]

Date Apr 29/85

Recorded Holder or Agent (Signature) JWR

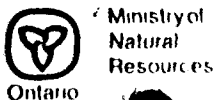
Certification Verifying Report of Work

I hereby certify that I have a personal and intimate knowledge of the facts set forth in the Report of Work annexed hereto, having performed the work or witnessed same during and/or after its completion and the annexed report is true.

Name and Postal Address of Person Certifying
J. W. Redden Box 117
Wabigoon Out P0V2W0

Date Certified Apr 29/85

Certified by (Signature) [Signature]



Report of Work
(Geophysical, Geological,
Geochemical and Expenditures)

FWM,
2.8245
Mining Act

Instructions: - Please type or print.
- If number of mining claims traversed exceeds space on this form, attach a list.
Note: - Only days credits calculated in the "Expenditures" section may be entered in the "Expend. Days Cr." columns.
- Do not use shaded areas below.

June 20 #97-85

Type of Survey(s) **CONSULTANT STUDY** Township or Area **CONTACT BAY G. 2589 BUTLER LAKE**

Claim Holder(s) **J. MAWES** Prospector's Licence No. **H 11458 G. 2976**

Address **Box 249, Stn A Winnipeg Man R3K 2A1**

Survey Company **Archean Resources Corp** Date of Survey (from & to) _____ Total Miles of line Cut _____

Name and Address of Author (of Geo Technical report) **Dr. Groves VANCOUVER BC** Day | Mo. | Yr. | Day | Mo. | Yr.

Credits Requested per Each Claim in Columns at right

Special Provisions	Geophysical	Days per Claim
For first survey: Enter 40 days. (This includes line cutting)	- Electromagnetic	
	- Magnetometer	
For each additional survey: using the same grid: Enter 20 days (for each)	- Radiometric	
	- Other	
	Geological	
	Geochemical	
Man Days	Geophysical	Days per Claim
Complete reverse side and enter total(s) here	- Electromagnetic	
	- Magnetometer	
	- Radiometric	
	- Other	
	Geological	
	Geochemical	
Airborne Credits		Days per Claim
Note: Special provisions credits do not apply to Airborne Surveys.	Electromagnetic	
	Magnetometer	
	Radiometric	

Mining Claims Traversed (List in numerical sequence)

Prefix	Mining Claim		Expend. Days Cr.	Prefix	Mining Claim		Expend. Days Cr.
	Number	Number			Number	Number	
K	706070		13				
	072		13				
	073		13				
	125		13				
	126		13				
	127		13				
	128		13				
	129		13				
	130		13				
	131		13				
	132		14				
	133		14				
	134		14				
	136		14				
	137		14				
	140		17				

RECEIVED
MAY 0-8 1985
MINING LANDS SECTION

RECEIVED
KENORA MINING DIV.
APR 29 1985
AM 7:8 9:10 11:12 1:2 3:4 5:6 PM

Expenditures (excludes power stripping)

Type of Work Performed _____

Performed on Claim(s) _____

Calculation of Expenditure Days Credits

Total Expenditures **\$ 3260** ÷ **15** = **217 2/3** Total Days Credits

Instructions
Total Days Credits may be apportioned at the claim holder's choice. Enter number of days credits per claim selected in columns at right.

706070

Total number of mining claims covered by this report of work. **16**

Date **Apr 29/85** Recorded Holder or Agent (Signature) *[Signature]*

For Office Use Only

Total Days Cr. Recorded **217** Date Recorded **Apr 29/85** Mining Recorder *[Signature]*

Date Approved as Recorded **Apr 29/85** Branch Director *[Signature]*

Certification Verifying Report of Work

I hereby certify that I have a personal and intimate knowledge of the facts set forth in the Report of Work annexed hereto, having performed the work or witnessed same during and/or after its completion and the annexed report is true.

Name and Postal Address of Person Certifying **J. W. REDDEN 1304 117**

Date Certified **Apr 29/85** Certified by (Signature) *[Signature]*



Mining Lands Comments

- Is this file acceptable under 77(19)?
- Are all charges acceptable? OK

Clarence,

We are getting more and more of these property evaluation, examination and consultant reports under 77(19).

Perhaps we should have some guidelines from you as to what should be in such submissions to be acceptable under 77(19) as opposed to other sections.

Doug

To: Geophysics

Comments

Approved Wish to see again with corrections

To: Geology - Expenditures C. KUSTRA

Comments

Approved Wish to see again with corrections

Date Aug 20/85

Signature C. Kustra

To: Geochemistry

Comments

Jeff S.

Approved Wish to see again with corrections

Date

Signature

To: Mining Lands Section, Room 6462, Whitney Block.

(Tel: 5-1380)

W.D. GROVES, P. ENG.

ARCHAEAN RESOURCES CORP.
152 - 890 W. Pender
Vancouver, B.C.
V6C 1J9

01 November, 1985

RECEIVED FROM: McConnell-Peel Resources Ltd. and American Volcano Minerals Corp.
an aggregate of \$3,260.00 for geological work, reports and
assays of samples from the Lake Wabigoon, Dryden Ontario
Property.

William D. Groves

W.D. Groves, P.Eng.

Re; File Number 2.8245

RECEIVED

NOV - 1 1985

MINING LANDS SECTION

REGISTERED

October 3, 1985

File: 2.8245

J. Hawes
Box 249, Station A
Winnipeg, Manitoba
R3K 2A1

Dear Sir:

RE: Consultant Study submitted on
Mining Claims K 706070, et al,
in the Areas of Butler Lake
and Contact Bay

Enclosed is a copy of our letter dated August 29,
1985 requesting additional information for the
above-mentioned survey.

Unless you can provide the required data by October 15,
1985, I will have no other alternative but to instruct
the mining recorder to cancel the work credits recorded
on April 29, 1985.

For further information, please contact Mr. Ray Pichette
at (416)965-4888.

Yours sincerely,

S.E. Yundt
Director
Land Management Branch

Whitney Block, Room 6643
Queen's Park
Toronto, Ontario
M7A 1W3
Phone:(416)965-4888

DK/mc

cc: Mining Recorder
Kenora, Ontario
File: 97-85

J.W. Redden
Box 117
Wabigoon, Ontario
POV 2W0

Encl.

85-10-08
allows
4 weeks from today to
Nov 5, 1985
after which - delete
R
Spike with J.W.
Redden

inform
on all
correspondence.

August 29, 1985

File: 2.8245

J. Hawes
Box 249, Station A
Winnipeg, Manitoba
R3K 2A1

Dear Sir:

RE: Consultant Study submitted on
Mining Claims K 706070, et al,
in the Areas of Butler Lake &
Contact Bay

In order to complete the above-described submission,
please remit (in duplicate), receipts or cancelled
cheques as proof of payment for the \$3260.00 expen-
diture credits claimed. Invoices are not considered
adequate verification.

When submitting this information, please quote file
2.8245.

For further information, please contact Dennis Kinvig
at (416)965-4888.

Yours sincerely,

S.E. Yundt
Director
Land Management Branch

Whitney Block, Room 6643
Queen's Park
Toronto, Ontario
M7A 1W3
Phone: (416)965-4888

D. Kinvig:mc

cc: Mining Recorder
Kenora, Ontario
File: #97-85

Mining Lands Section

File No 28245

Control Sheet

TYPE OF SURVEY GEOPHYSICAL
 GEOLOGICAL
 GEOCHEMICAL
 EXPENDITURE

MINING LANDS COMMENTS:

need receipts for groves invoices.

L.S.

Signature of Assessor

Date

REGISTERED

June 21, 1985

Report of Work 96-85

J. Hawes
Box 249
Station A
Winnipeg, Manitoba
R3K 2A1

Dear Sir:

RE: Compilation Study on Mining Claims
K 706070, et al, in the Area of
Butler Lake and Contact Bay

I have not received the reports and maps (in duplicate)
for the Compilation Study on the above-mentioned claims.

As the assessment "Report of Work" was recorded by the
Mining Recorder on April 29, 1985 the 60 day period
allowed by Section 77 of the Mining Act for the submission
of the technical reports and maps to this office will
expire on June 30, 1985.

If the material is not submitted to this office by June 30,
1985, I will have no alternative but to instruct the Mining
Recorder to delete the work credits from the claim record
sheets.

For further information, please contact Mr. Arthur Barr
at (416)965-4888.

Yours sincerely,

S.E. Yundt
Director
Land Management Branch

Whitney Block, Room 6643
Queen's Park
Toronto, Ontario
M7A 1W3
Phone:(416)965-4888

A. Barr:mc

cc: J.W. Redden
Box 117
Wabigoon, Ontario
POV 2W0

cc: Mining Recorder
Kenora, Ontario

REGISTERED

June 21, 1985

Report of Work 97-85

J. Hawes
Box 249
Station A
Winnipeg, Manitoba
R3K 2A1

Dear Sir:

RE: Consultant Study on Mining Claims
K 706070, et al, in the Areas of
Butler Lake and Contact Bay

I have not received the reports and maps (in duplicate)
for the Consultant Study on the above-mentioned claims.

As the assessment "Report of Work" was recorded by the
Mining Recorder on April 29, 1985 the 60 day period
allowed by Section 77 of the Mining Act for the submission
of the technical reports and maps to this office will
expire on June 30, 1985.

If the material is not submitted to this office by June 30,
1985, I will have no alternative but to instruct the Mining
Recorder to delete the work credits from the claim record
sheets.

For further information, please contact Mr. Arthur Barr
at (416)965-4888.

Yours sincerely,

S.E. Yundt
Director
Land Management Branch

Whitney Block, Room 6643
Queen's Park
Toronto, Ontario
M7A 1W3
Phone: (416)965-4888

A. Barr;Mc

cc: J.W. Redden
Box 117
Wabigoon, Ontario
POV 2W0

cc: Mining Recorder
Kenora, Ontario

J. W. REDDEN
Geologist

P. O. Box 117
Wabigoon, Ont.
POV 2W0 Canada

Tel. (807) 938-6915

Client: Mr. Andrew Babiy,
c/o B. M. Drilling,
1065 Singh St.,
Kamloops, B. C.
V2B 5L2

Date	Job No.:	Ordered	Completed	Terms
June 8/85	85-02		June 8/85	Net 30 days
Description		Dr.	Cr.	Balance
John Harrison Property Report 6 days @ \$250.00		\$1500.00		\$1500.00

*Payment Rec'd
JWR*

Invoice No.

I N V O I C E

012

#96-85

Dr. W.D. Groves, P.Eng.
Archaean Resources Corp.
200-675 W. Hast.
Vancouver, B.C.

In account with:

American Volcano Minerals Corp.
McConnell-Peel Resources Ltd.
Vancouver, B.C.

Nov. 28, 1984

#84-25

Re: Report on Ultrabasic-Associated Cu/Ni/Co Precious Metal
Property, Contact Bay, Lake Wabigoon (Dryden) Area,
Kenora Mining Division, Ontario

Professional Services:

W.D. Groves, P.Eng., Report Preparation
4 ½ days @ \$350/day \$ 1,575

Costs: Word processor, xerox, rough
typing, jackets, etc. 325

TOTAL \$ 1,900

THIS IS MY ACCOUNT:



W.D. Groves, P.Eng.

#97-85

INVOICE

W.D. Groves, P. Eng.
Archaean Resources Corp.
152-890 W. Pender
Vancouver, B.C.
Nov. 23, 1984

IN ACCOUNT WITH: McConnell--Peel ^{RESOURCES} ~~Industries~~
530-800 W. Pender
Vancouver, B.C.

#83-48

Re: Fieldwork--Harrison Property, Dryden, Ontario

Fees; Nov. 16; Travel Van-Dryden; discuss property
and examine records
Nov. 17; Visit Harrison property
Nov. 18; Bulk sample Nichro pit; travel Dryden
Vancouver

3 days @ \$350/day \$1,050.00

Expenses;

Airport parking charge	14.25
Meals	46.55
Gasoline	40.59
Miscellaneous	9.41
Total	<u>\$1,160.80</u>
Less \$300 advance	<u>300.00</u>

NOW OWING \$ 860.80

THIS IS MY ACCOUNT:

William D. Groves

W.D. Groves, P. Eng.

PAID Nov 24
#217
\$860.80

[Handwritten signature]

ACME ANALYTICAL LABORATORIES LTD.

PHONE: 253-3158

852 East Hastings St., Vancouver, B.C. V6A 1R6

STATEMENT

Date: Apr. 30, 1984

McConnell - Peel Resources Inc.
530 - 800 W. Pender St.,
Vancouver, B.C.

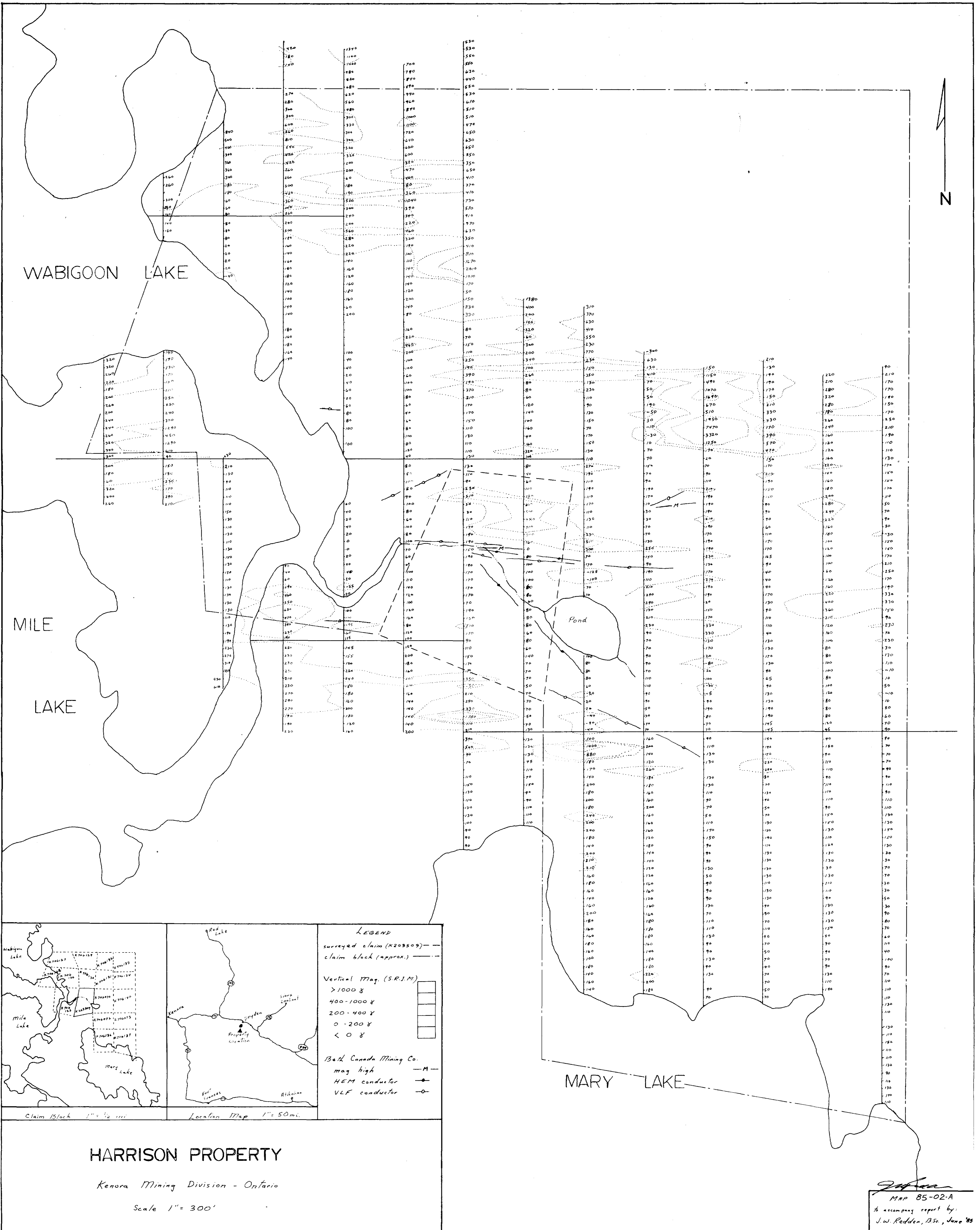
TERMS:
NET TWO WEEKS
2% PER MONTH CHARGED ON
OVERDUE ACCOUNTS.

Attn.: Mr. Vern Meyer

DATE	REFERENCE FILE NUMBER	DEBIT	CREDIT	BALANCE
Mar. 31, 1984	Balance Forward	\$358.67		
	Int. @ 1½% per month	5.38		
Apr. 2, 1984	File # 84-0453	122.00		
	Total Balance			\$486.05

*Paid
MAY 15/84
#112
RYDEN ENT.
PROP.*

PLEASE PAY LAST AMOUNT →

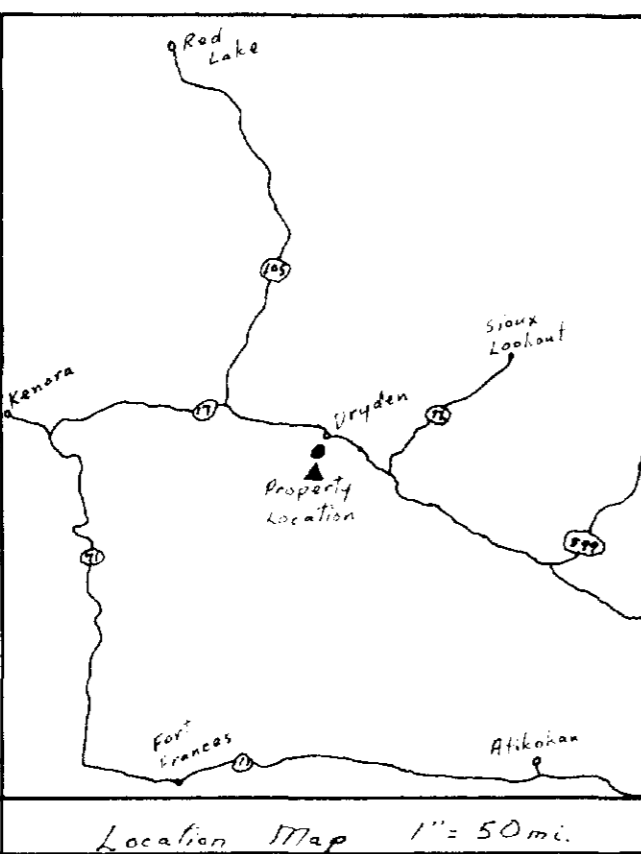
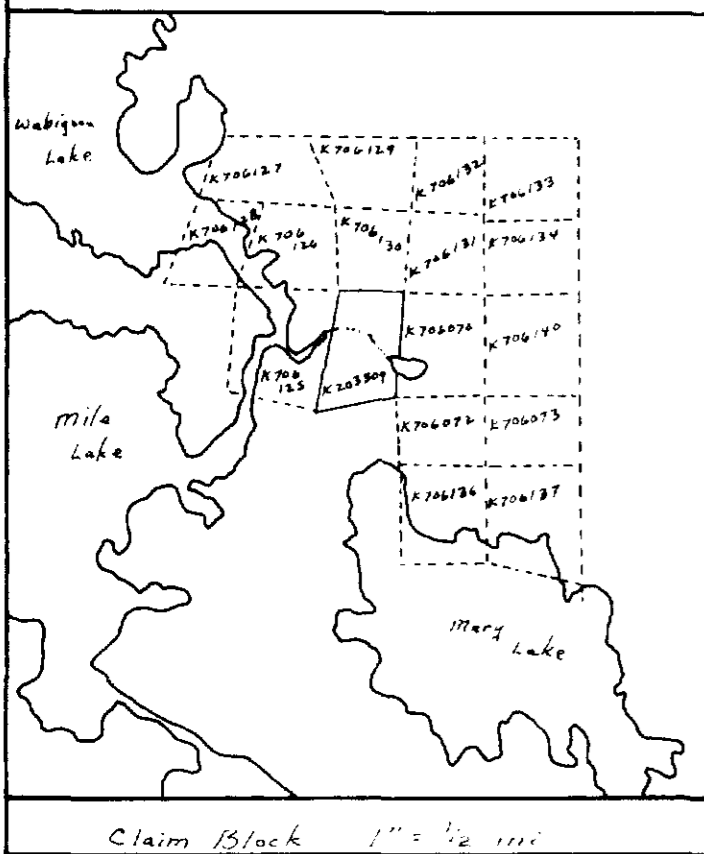


WABIGOON LAKE

MILE LAKE

LAKE

MARY LAKE



LEGEND
 surveyed claim (K203509) ———
 claim block (approx.) - - -
 Vertical Mag. (S.R.I.M.)
 > 1000 γ
 400-1000 γ
 200-400 γ
 0-200 γ
 < 0 γ

Bath Canada Mining Co.
 mag high — M —
 HEM conductor — H —
 VLF conductor — V —

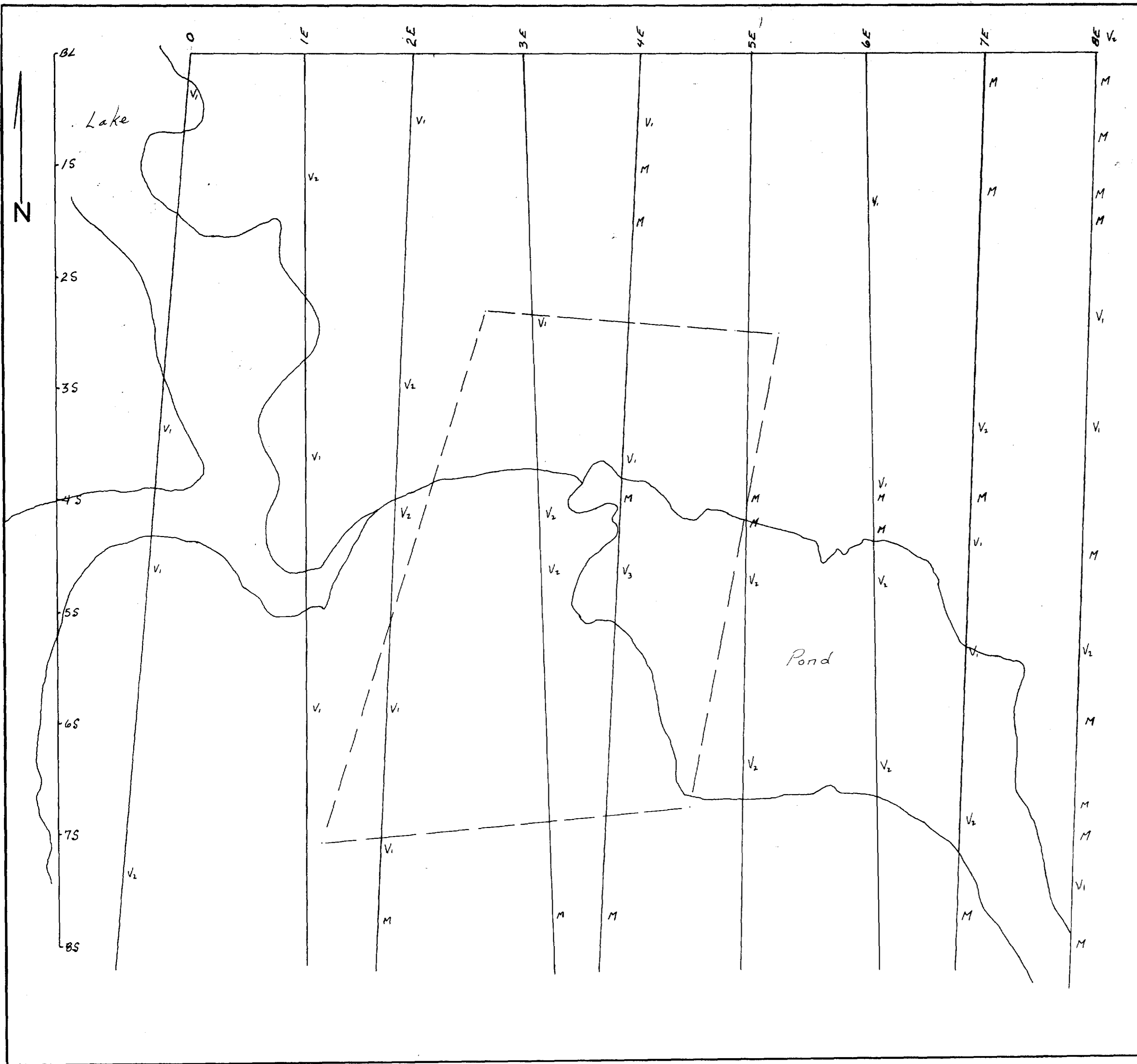
HARRISON PROPERTY

Kenora Mining Division - Ontario

Scale 1" = 300'

MAP 85-02-A
 & accompanying report by:
 J.W. Redden, B.Sc., June '85





HARRISON PROPERTY

Kenora Mining Division - Ontario
scale 1:2500

- Legend
- surveyed claim R203509
 - picket line
 - magnetic high M
 - VLF - Fraser Filter Anomaly
 - V₁ : F.F. value 1-30
 - V₂ : F.F. value 31-60
 - V₃ : F.F. value 61-116

[Signature]
MAP 85-02B
*accompany report by:
J.W. Radden, B.Sc. June '85

28245

