



52F10NW0089 23 CONTACT BAY (WABIG00

010

Diamond Drilling

Area of CONTACT BAY

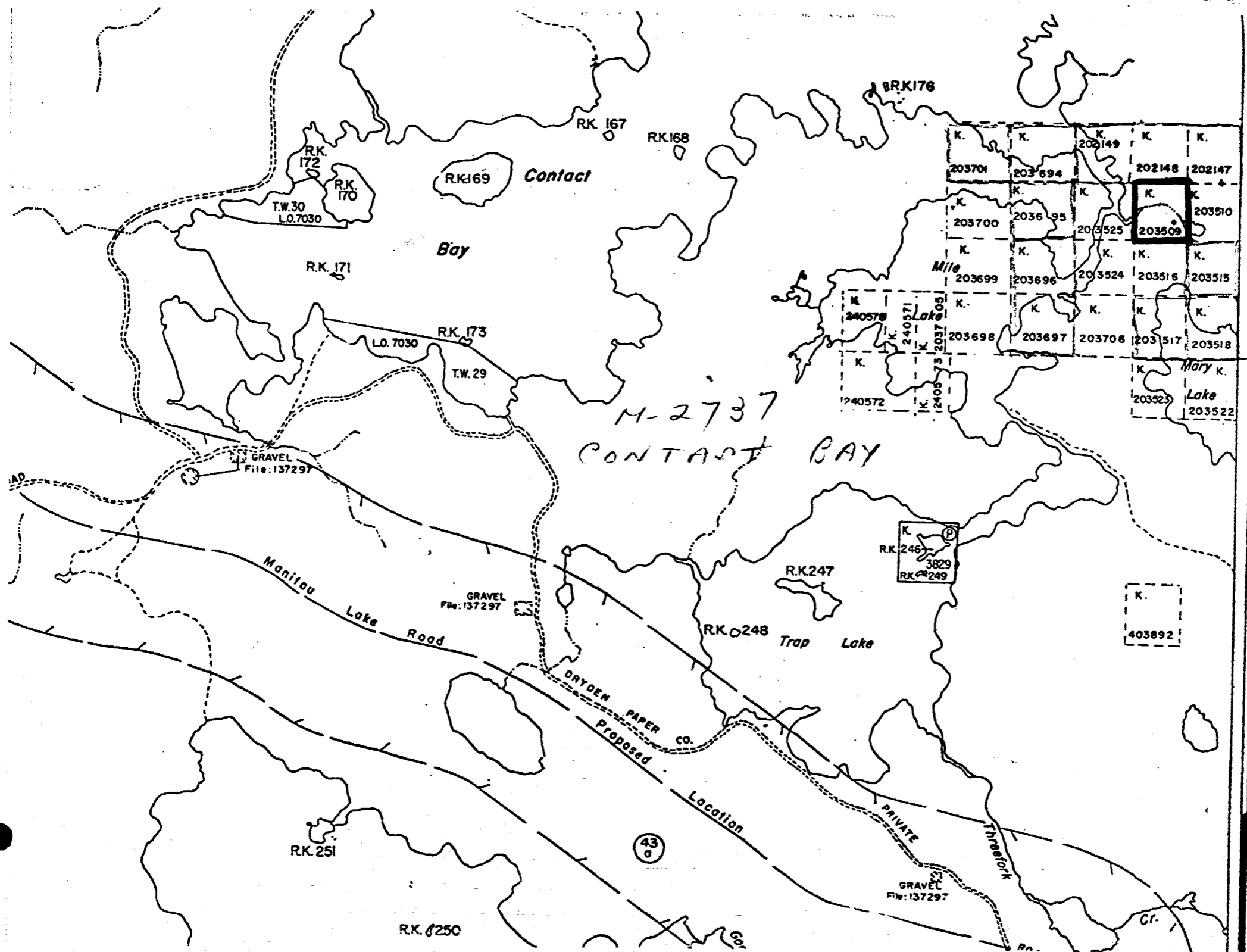
Report N^o 23

Work performed by: JOHN P. HARRISON

Claim N ^o	Hole N ^o	Footage	Date	Note
K 203509	1	272.0'	Dec/75	(1)

Notes:

(1) #121-75



M-2737
CONTACT BAY

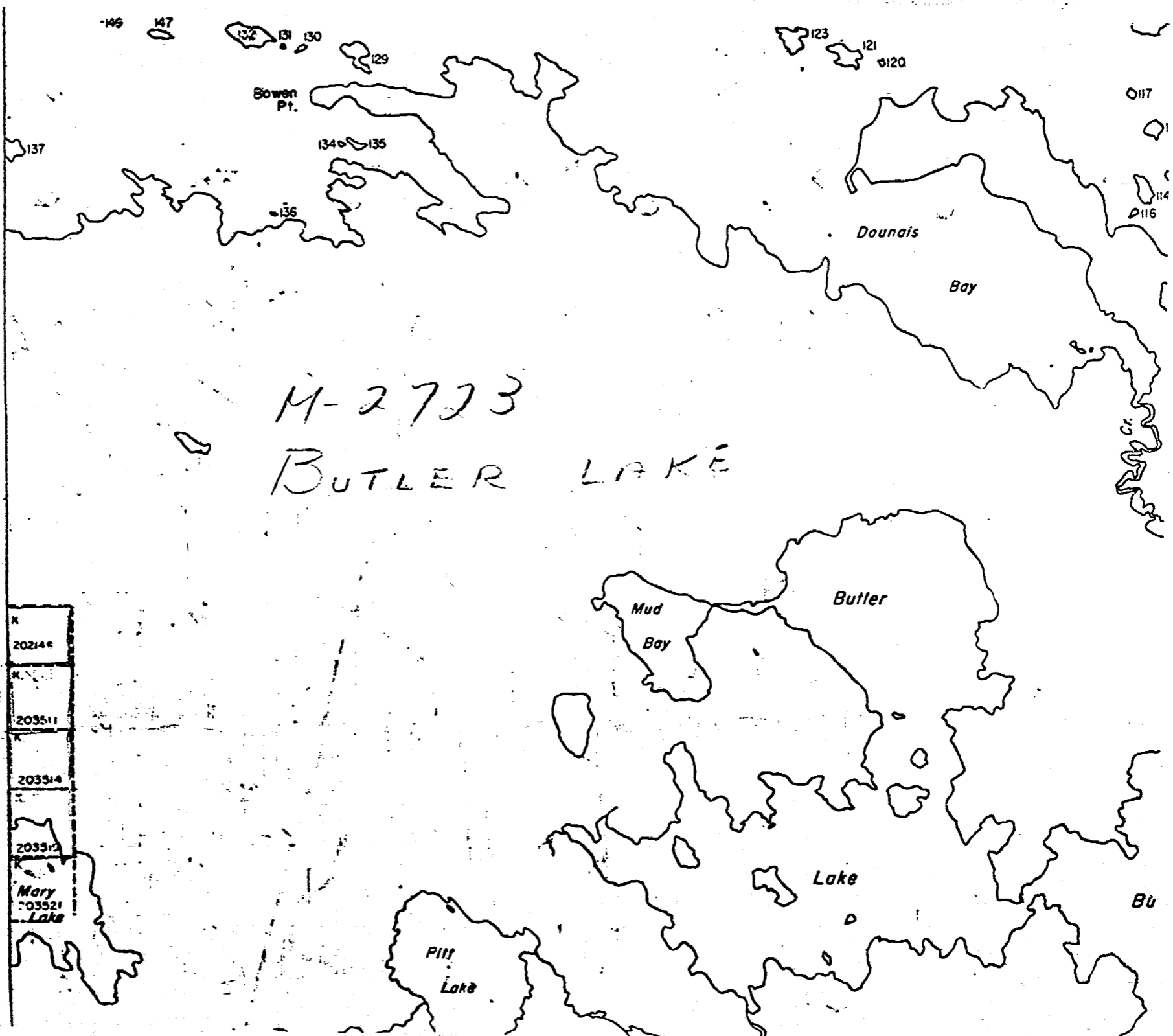
K.	K.	K.	K.	K.
203701	203694	203149	202148	202147
K.	K.	K.	K.	K.
203700	203695	203525	203509	203510
K.	K.	K.	K.	K.
203699	203696	203524	203516	203515
K.	K.	K.	K.	K.
240578	240571	240570	203698	203697
K.	K.	K.	K.	K.
240572	240573	203706	203517	203518
K.	K.	K.	K.	K.
			203523	203522

K.
403892

3

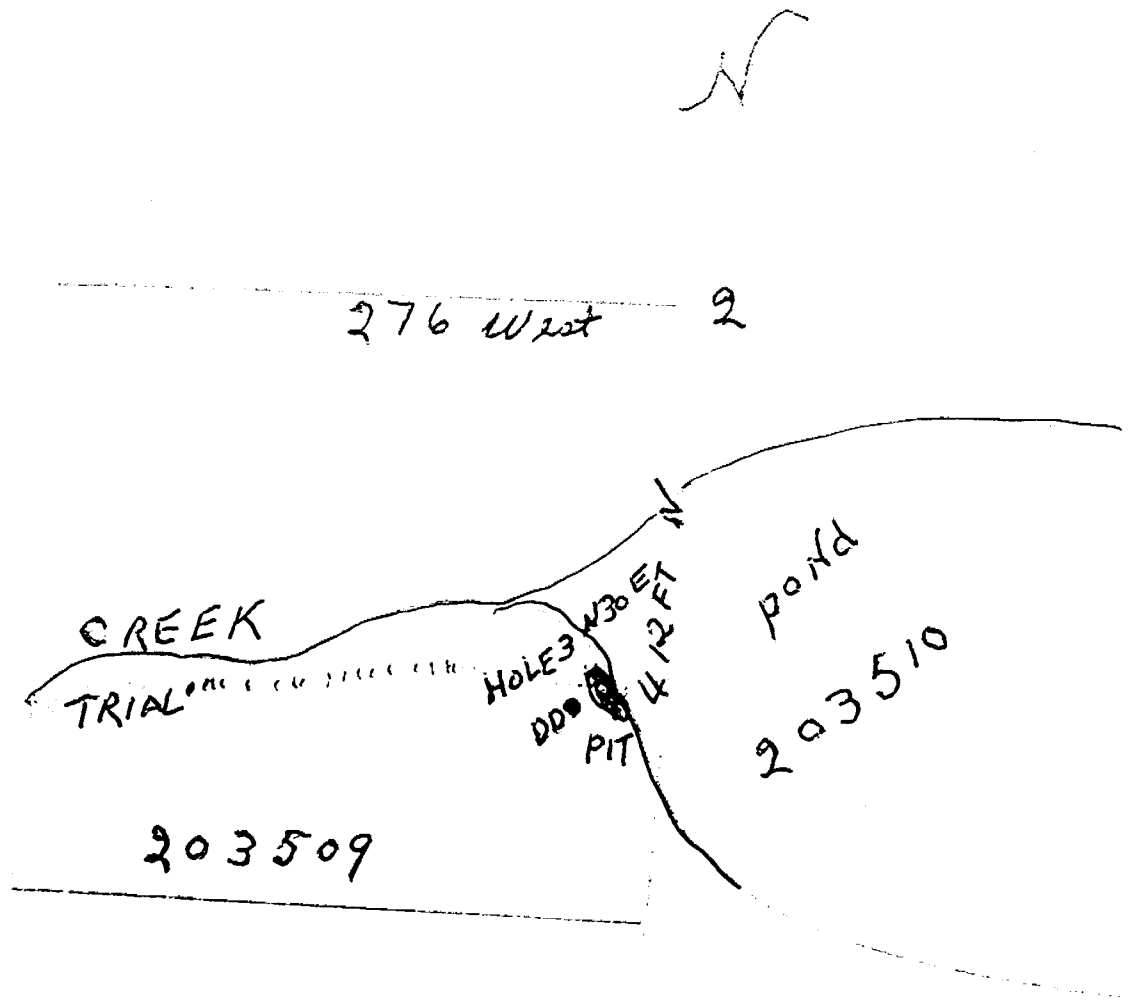
BUTLER LAKE + CONTACT BAY

#121-75



M-2773

BUTLER LAKE



KENORA
MINING DIV.
RECEIVED
DEC 16 1975
AM 7 8 9 10 11 12 1 2 3 4 5 6 PM



THE MINING ACT - DEPARTMENT OF MINES
DIAMOND DRILLING LOG

Start a new page for every new hole, but fill in top portion of form only on first page for each hole.

FILL IN ON EVERY PAGE HOLE NO. 1 PAGE NO. 1

DRILLING COMPANY FONTAINE DIAMOND DRILLING		COLLAR ELEVATION 45	BEARING OF HOLE FROM TRUE NORTH South	TOTAL FOOTAGE 339	DIP OF HOLE AT COLLAR 45	LOCATION OF HOLE IN RELATION TO A FIXED POINT ON THE CLAIM 800 West	MAP REFERENCE NO. M2737	CLAIM NO. 203509
DATE HOLE STARTED OCT 15	DATE COMPLETED NOV 1 1975	DATE LOGGED DEC 1 1975	LOGGED BY JOHN P. HARRISON		ft	LOCATION (Tp., Lot, Con. OR Lat. and Long.)	CONTACT BY HARRISON PROPERTY	
EXPLORATION CO., OWNER OR OPTIONEE JOHN P. HARRISON		DATE SUBMITTED 11 DEC 1975	SUBMITTED BY (Signature) <i>John P. Harrison</i>		ft		PROPERTY NAME HARRISON PROPERTY	
					ft			

FOOTAGE		ROCK TYPE	DESCRIPTION Colour, grain size, texture, minerals, alteration, etc.	PLANAR FEATURE ANGLE	CORE SPECIMEN FOOTAGE +	YOUR SAMPLE NUMBER	SAMPLE FOOTAGE		SAMPLE LENGTH	ASSAYS +	
FROM	TO						FROM	TO			
0	22	Cassina									
22	111		ANORTHOITE Med. grained								
111	117	Dyke dark	fine grained								
117	149	anorthite	Med. grained some gto eyes blue								
149	176	anorthite talco	Med. to fine grained								
176	260	Gabbro	less anorthite fine grained								
260	290	Talco	very coarse								
290	339	Gabbro	coarse								

RENORA
MINING DIV.
RECEIVED
DEC 16 1975
AN 7 8 9 10 11 12 13 14 15 16



THE MINING ACT - DEPARTMENT OF MINES
DIAMOND DRILLING LOG

Start a new page for every new hole, but fill in top portion of form only on first page for each hole.

FILL IN ON EVERY PAGE

HOLE NO. 3 PAGE NO. 3

DRILLING COMPANY FONTAINE DIAMOND DRILLING		COLLAR ELEVATION 48	BEARING OF HOLE FROM TRUE NORTH N.30 E	TOTAL FOOTAGE 272	DIP OF HOLE AT collar 48	LOCATION OF HOLE IN RELATION TO A FIXED POINT ON THE CLAIM	MAP REFERENCE NO. M2737	CLAIM NO. 203509
DATE HOLE STARTED Dec 1 1975	DATE COMPLETED DEC 9 1975	DATE LOGGED DEC 10 1975	LOGGED BY JOHN P HARRISON		15 ft	200 West PIT 203509	LOCATION (Tp., Lot, Con. OR Lot. and Long.)	
EXPLORATION CO., OWNER OR OPTIONEE JOHN P. HARRISON		DATE SUBMITTED DEC 11 1975	SUBMITTED BY (Signature) <i>John P Harrison</i>		ft		CONTACT BAY WASH 60	
					ft		PROPERTY NAME HARRISON PROPERTY	

FOOTAGE FROM TO		ROCK TYPE	DESCRIPTION Colour, grain size, texture, minerals, alteration, etc.	PLANAR FEATURE ANGLE	CORE SPECIMEN FOOTAGE +	YOUR SAMPLE NUMBER	SAMPLE FOOTAGE FROM TO		SAMPLE LENGTH	ASSAYS +	
0	15	Cassina									
15	86	gts GABRO	Med grained pale green some gts stringers								
86	118	gts GABRO	Med grained light green fine subhedral								
118	125	gts GABRO	Med grained light green fine subhedral								
125	132	GABRO	Med grained light green fine subhedral								
132	222	GABRO	Med grained light green fine subhedral								
222	272	ANORTHITES	ANORTHITES Fine to coarse								

KENORA MINING DIV.
RECEIVED
DEC 16 1975
AN 789101112123456

* For features such as foliation, bedding, schistosity, measured from the long axis of the core.