



Diamond Drilling

Area of CONTACT BAY

Report NO 24

Work performed by: NICHRO MINES LIMITED

Claim NO	Hole NO	Footage	Date	Note
K 203509	33	197.0'	Aug/74	(1)
K 203510	34	107.0'	Aug/74	(1)

Notes:

(1) #87-74



Claim No. K- 202149

Claim No. K- 202148

Claim No. K- 202147

4

1



Claim No. K- 203525

Claim No. K- 203509  
Nichro Mines Ltd.

Claim No. K- 203510

DD 33

247'

412'

3

2

Claim No. K- 203524

Claim No. K- 203516

Claim No. K- 203515



Claim No. K- 202148

Claim No. K- 202147

Claim No. K- 202146

4

1



Claim No. K- 203509

Claim No. K- 203510  
Nichro Mines Ltd.

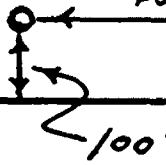
Claim No. K- 203511

DD 34

450'

3

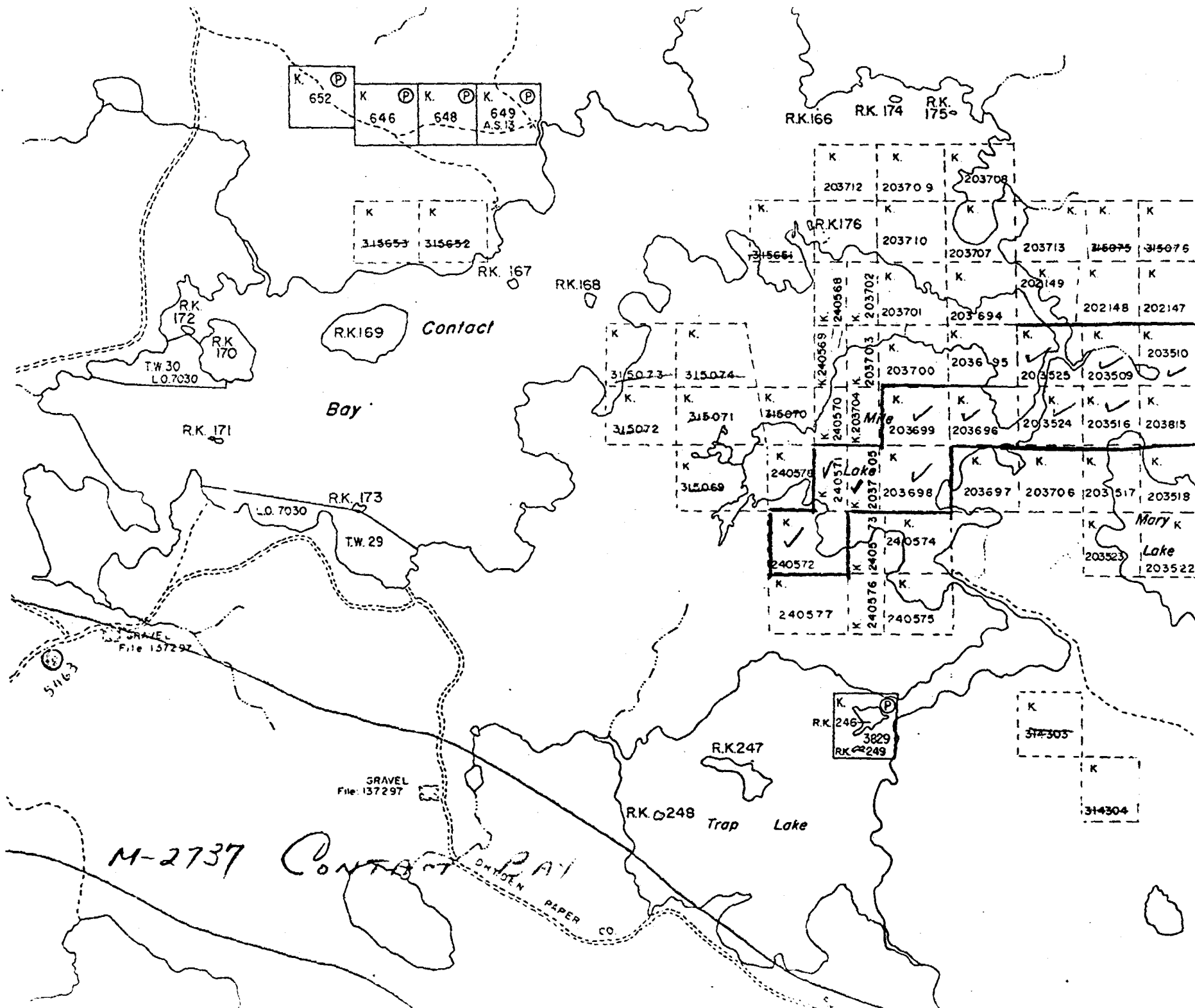
2



Claim No. K- 203516

Claim No. K- 203515

Claim No. K- 203514



Butler Lake M.2723

87/24 contact area

M-2737 CONTACT

42'  
41'  
40'  
39'