



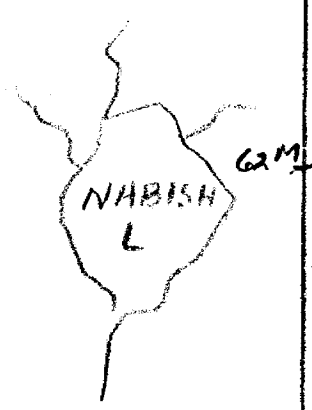
52F10NW0093 10 CONTACT BAY (WABIGOO)

010

AREA OF CONTACT BAY REPORT #10

This file contains work performed by A. Lantz on claims:

K.26922	Hole #1; 300	November, 1956
K.26930	Hole #2; 232	November, 1956
	Hole #4; 230	November, 1956
K.26928	Hole #3; 197	November, 1956
	959	



K 26930	K 26922
	K 26928

61M

M-2737
CONTACT BAY
KENORA DIV.

HOLE NO. 1

Contractor: A. Lantz Diamond Drilling, Wabigoon, Ontario.

Started: November 5, 1956, - Completed November 13, 1956.

Location: Nabish Lake, 1158 feet south and 1284 feet west of No. 1
Post K-26922. Bearing N40°W, Dip -45°, Depth 300', EX.

<u>Footage</u>	<u>Description</u>
0-8	Casing.
8-32	Granitized gabbro, trace pyrrhotite.
32-36	Sheared gabbro.
36-100	Granitized gabbro.
100-121	Silicified gabbro, trace pyrrhotite.
121-133	Gabbro.
133-137	Sheared gabbro, trace chalcopyrite and pyrrhotite.
137-146	Gabbro.
146-151	Granitized gabbro, trace pyrrhotite.
151-177	Gabbro.
177-179	Sheared gabbro, some graphite.
179-300	Gabbro.

Logged by:

R. Sultan and D. Malcol.

26929

26923

26924

26930

K26922

1158' SOUTH

26921

HOLE #1
AT 45°
AND W 40°N

1284' WEST

26925

26928

26927

A. N

SCALE 1" = 330'

HOLE NO. 2

Started: November 14, 1956, - Completed November 15, 1956.

Location: Nabish Lake, 1221 feet south and 30 feet west of No. 1
Post K-26930. Bearing north 40° west, Dip -60°, Depth 232',
E.X. size.

<u>Footage</u>	<u>Description</u>
0-3	Casing.
3-11	Granitized gabbro.
11-37	Gabbro, some chalcopryite & pyrrhotite.
37-63	Gabbro, trace pyrrhotite.
63-64	Sheared gabbro.
64-174	Gabbro, granitized in part.
174-185	Gabbro, some chalcopryite and pyrrhotite.
185-232	Gabbro.

Logged by:

R. Graham and D. C. Malachuk

26931

26929

26923

26932

26930

26922

HOLE # 2
AT -60°
AND W40°N

1221' SOUTH

30' W

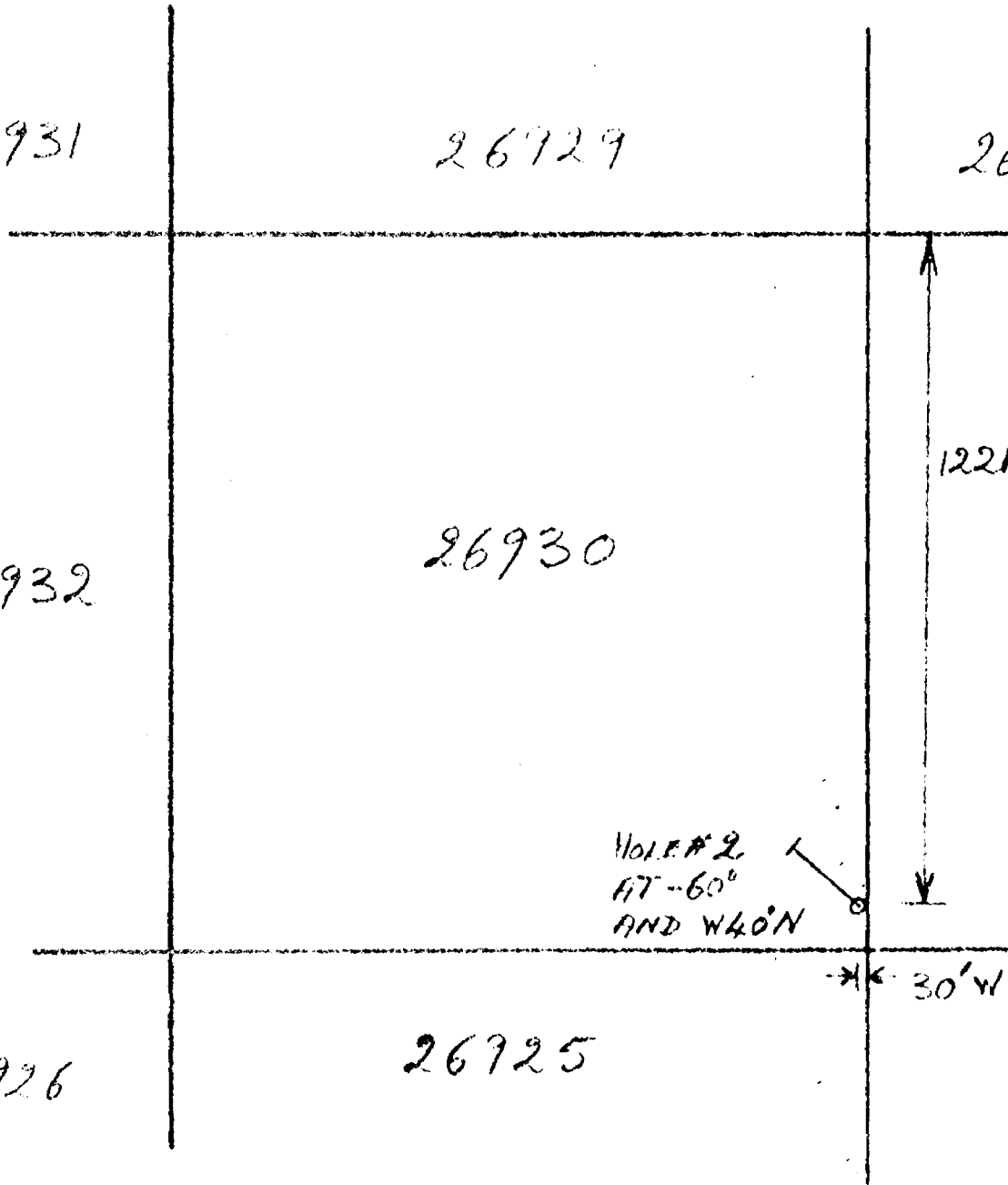
26926

26925

SCALE

1" = 330'

A.N



HOLE NO. 3

Started: November 16, 1956, - Completed November 17, 1956.

Location: Nabish Lake, 858 feet south and 940 feet west of No. 1
Post K-26928. Bearing south 40° east, Dip -60°. E.X. size.
Depth 230 feet.

<u>Footage</u>	<u>Description</u>
0-38	Granitized gabbro.
38-43	Silicified gabbro, trace pyrrhotite.
43-49	Granitized gabbro.
49-230	Gabbro.

Logged by:

R. Graham and D. W. Malin

26930

26922

26921

26925

26928

858'
SOUTH

26927

HOLE #3
17-60'
AND 2.20' W

26977

940' W

26988

26989

HOLE NO. 4

Started: November 21, 1956, - Completed November 23, 1956.

Location: Nabish lake, 1089 feet south and 165 feet west of No. 1
Post K-26930. Bearing north 40° west, Dip -60°, Length 197'.
E.X. size.

<u>Footage</u>	<u>Description</u>
0-21	Casing.
21-58	Gabbro.
58-59	Rusty shear.
59-88	Medium grained gabbro.
88-94	Bleached, brecciated, carbonated gabbro.
94-125	Gabbro.
125-126	Talc sericite schist.
126-197	Gabbro.

Logged by:

R Graham and D P Malcolm

26931

26929

26923

26930

1089'
SOUTH

26932

26922

HOLE # 4
AT -60'
AND E 40'S

26926

26925

165'
W

