



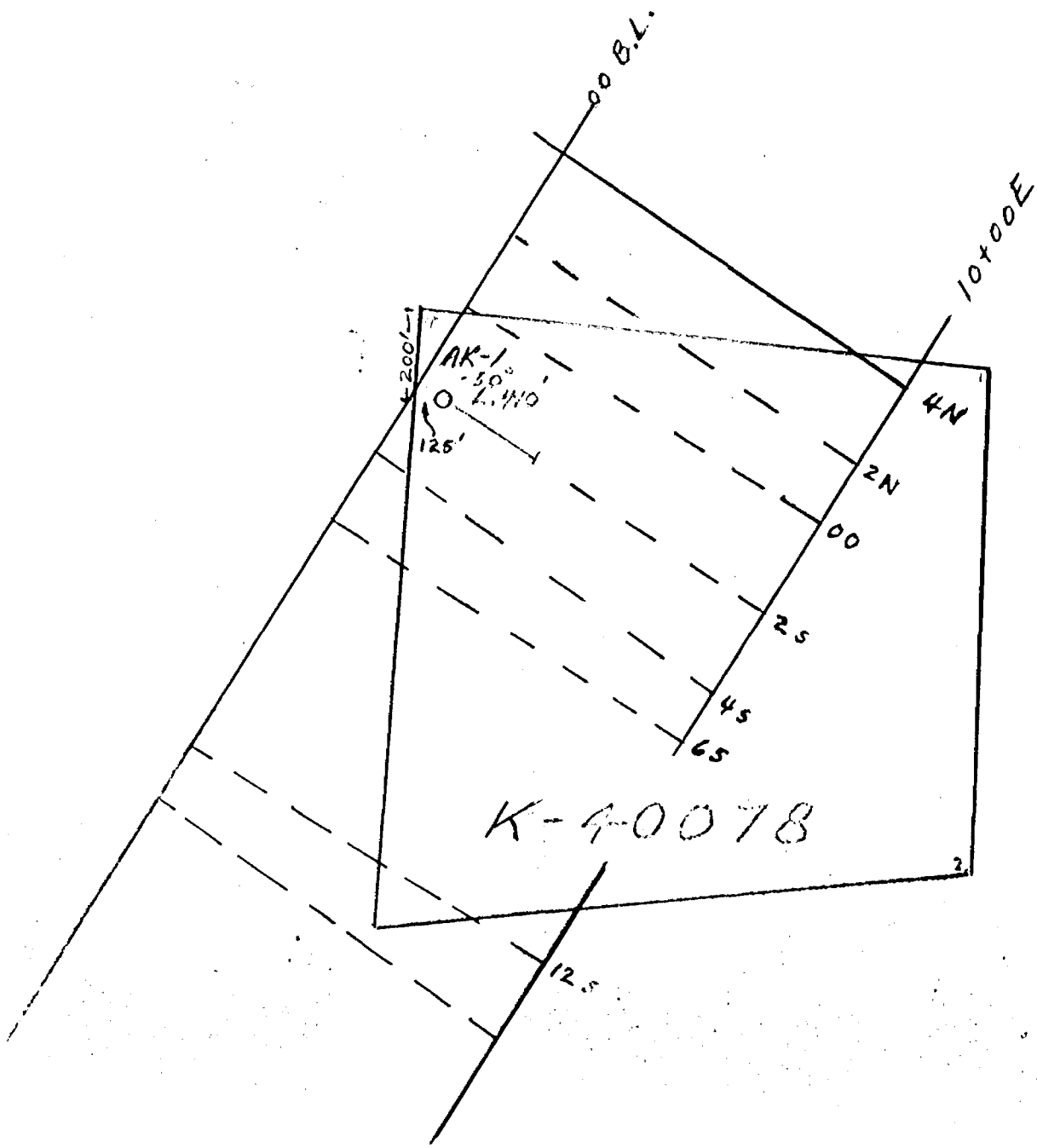
52F10NW0096 15 CONTACT BAY (WABIGOO)

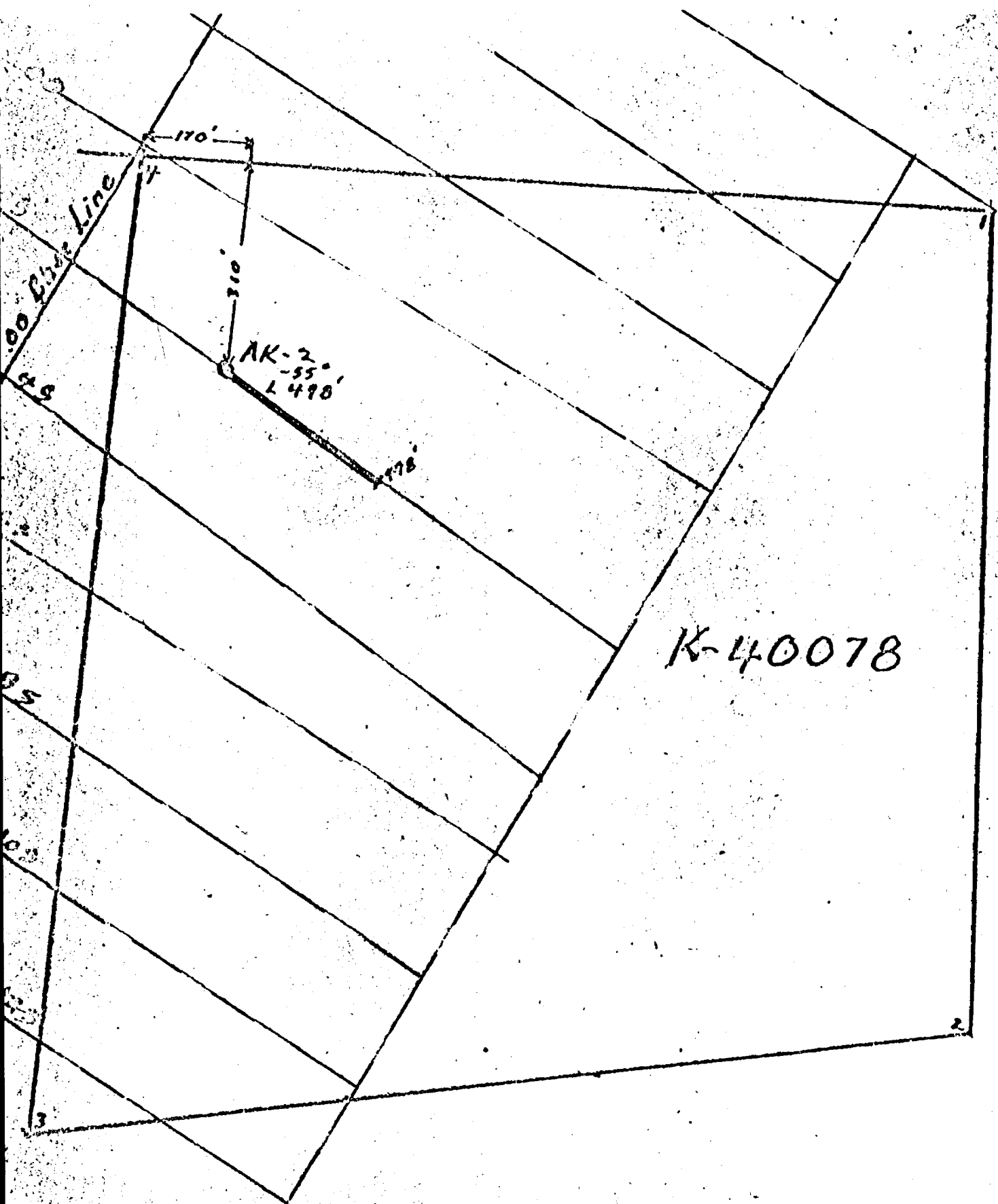
010

AREA OF CONTACT BAY REPORT #15

This file contains work performed by Hollinger Mines on claim:

| | | |
|---------|-------------|----------------|
| K.40078 | Hole #AK-1; | November, 1969 |
| | AK-2; | November, 1969 |





K-40078

PLAN SHOWING LOCATION
 OF POINT AK-2, CLAIM K-40078
 CONTACT BAY AREA
 Scale - 1" = 200'

417.70 Contact Bay
 Holdings Mine Ltd

FORM 822

NORTH _____
EAST. _____
ELEV. _____
AZIM. _____
DIP _____

DIAMOND DRILL REPORT

PROPERTY _____

HOLE NO. **AK - 1**
COMMENCED _____
FINISHED _____
PURPOSE OF _____
HOLE _____

| FROM | TO | DESCRIPTION | CORE SAMPLES | | | | | DESCRIPTION OF SAMPLE |
|------|-------|--|--------------|----|--------|-------|-------|------------------------|
| | | | FROM | TO | RECOV. | WIDTH | ASSAY | |
| 49.5 | 87.9 | Int. F.G. to Med. grained fragmental as at collar of hole - contacts sharp at 50-54° and slightly unconformable. Vague coarse fragmental Character - otherwise fairly uniformly textured and lineated at 45° to C.A. Lower contact faulted 1" Some Diss. py-po chalco w̄ increase in local seams (3%) | | | | | | Sample at 57.5 87.9 |
| 87.9 | 91.4 | Massive sil. Frag. (?) as above - more mass. occasional spot of Po. w̄ little chalco up to 1/4" Dia. Lineated by mafics at ? | | | | | | Sample at 90.5 |
| 91.4 | 119.3 | Int. F to M. grained dark grey-green indistinct (?) Frag. (?) as at 49.5 to 87.9 Both contacts sharp-upper ground, lower sheared at 42° (1/2") Generally sheared and /or bedded at (?) - massive. Massive texture w̄ up to 1/16" needles of amphibole 30% silica | | | | | | |

NORTH _____
 EAST. _____
 ELEV. _____
 AZIM. _____
 DIP _____

DIAMOND DRILL REPORT

PROPERTY _____

HOLE NO. AK-1

COMMENCED _____
 FINISHED _____
 PURPOSE OF _____
 HOLE _____

| FROM | TO | DESCRIPTION | CORE SAMPLES | | | | | DESCRIPTION OF SAMPLE |
|-------|-------|--|--------------|----|--------|-------|-------|---|
| | | | FROM | TO | RECOV. | WIDTH | ASSAY | |
| | | As 1/32" granules and 50% mafics (not including coarse needles - lower contact chilled (?) chloritic spots. At 98.7 to 99.0 siliceous inclusion as follows acid vol.-contacts sharp and not parallel. Few 1/8" qtz. carb. stringers (15) at 15° to 30° to C.A. Diss. w̄ pyrite throughout. | | | | | | sample at 119.3 - 0.9' |
| 119.3 | 151.3 | Grey sil. Acid. coarse fragmental mottled w̄ sericitic alteration - up to 1" sil. stretched frags. at 58° parallel to bedding. Some ind. graded bedding - tops up hole (?) In places up to 1/16" amphibole needles intruded by amphibolite dike at 131.5 to 132.6 at 50° to 60° to C.A. - and somewhat altered (amphibolitic) to about 138. Well diss w̄ sulphides po, py, chalco (up to 5%) throughout and particularly at 119.3 to 120.3, 122.4 to 128.5, 140.0 to 140.1. | | | | | | sample - 122.5" 132.6 - 5" 145.0 - 6" |

FORM 822

DIAMOND DRILL REPORT

HOLE NO. AK-1

NORTH _____
 EAST. _____
 ELEV. _____
 AZIM. _____
 DIP _____

COMMENCED _____
 FINISHED _____
 PURPOSE OF _____
 HOLE _____

PROPERTY _____

| FROM | TO | DESCRIPTION | CORE SAMPLES | | | | | DESCRIPTION OF SAMPLE |
|-------|-------|--|--------------|----|--------|-------|---------|--|
| | | | FROM | TO | RECOV. | WIDTH | ASSAY | |
| 151.3 | 157.4 | Amphibolitic dark grey green dike as above at 91.4 to 119.3 - massive med-f. grained uniform with sharp discordant contacts-slightly chilled at 25° & 33° to C.A. Diss w̄ specks of sulphide - py, po Few hair stringers of qtz-carb. | | | | | | water seam at 170.8 ground core at 204.2 to 212 (80%) -212 to 222 (1.6') .222 to 232 (2'5') |
| 157.4 | 236.0 | Acid fragmental-as above at 119.3 to 151.3 Up to 1" sil. frags. subhedral to anhedral in mafic ground mass (sericitic) Becoming more mafic with depth Due to increase in chlorite and 1/16" amphibole needles Shearing and /or bedding at 55° to 75° to C.A.-somewhat granitic textured. At 196.6 to 197.7 - 2-2" frags. sil w̄ mafic spots. Intruded by above dikes at 183. to 185.1 (25° to 57° to CA), 186.2 to 192.8 (20° & 45° to CA)-irregular slightly chilled Diss py up to 5% sulphides in frags & GD mass po, py, chalco throughout and esp at 159.9 (1"-po-chalco) 161.7 (po-cu) 171.6 to 171.7 (po,Cu) | 160.0 | 4" | 10 | 1/16" | Nil Nil | Samples - 160.0 (4") - 167.6 (5") - 178.7 (3") -186.1 (6") -197.3 (8") +219.2 (5") -234.7 (4") |

FORM 822

DIAMOND DRILL REPORT

HOLE NO. AK-1

NORTH _____
 EAST _____
 ELEV. _____
 AZIM. _____
 DIP _____

PROPERTY _____

COMMENCED _____
 FINISHED _____
 PURPOSE OF _____
 HOLE _____

| FROM | TO | DESCRIPTION | CORE SAMPLES | | | | | DESCRIPTION OF SAMPLE |
|-------|-------|---|--------------|----|--------|-------|-------|-----------------------|
| | | | FROM | TO | RECOV. | WIDTH | ASSAY | |
| | | 173.8 to 175.6 (spots Cu in Po), 185.9 to 186.1 (cu in po) 194.8 (po), 218.0 to 218.2 (Diss w po) | | | | | | |
| 236.0 | 245.6 | Typical amphibolitic dikes as above w similar qtz - carb. hair stringers at 45° to CA Contacts sharp and slightly chilled & at 25 & 15° to CA irregular and discordant.-Lower contact at 90° to strike in core of bedding of following fragmental. Few diss. sulphides. py-po. | | | | | | |
| 245.6 | 254.3 | Coarse fragmental-continuous From above - grey green dark and siliceous Bedding and or shearing at 60° to CA - stretched frags - anhedral to subhedral w long axis up to 1" ÷ short - 1/4" Some diss sulphides - as above (1% or less) | | | | | | Sample - 245.6 (5" |

FORM 822

NORTH _____
 EAST. _____
 ELEV. _____
 AZIM. _____
 DIP _____

DIAMOND DRILL REPORT

PROPERTY _____

HOLE NO. AK-1

COMMENCED _____
 FINISHED _____
 PURPOSE OF _____
 HOLE _____

| FROM | TO | DESCRIPTION | CORE SAMPLES | | | | | DESCRIPTION OF SAMPLE |
|-------|-------|--|--------------|----|--------|-------|-------|--|
| | | | FROM | TO | RECOV. | WIDTH | ASSAY | |
| 254.3 | 261.7 | Finer grained - grey dark green amphibolitic dike-as above-some epidote contacts sharp at 50° to ground slightly <i>chilled</i> drilled and discordant. | | | | | | |
| 261.7 | 326.4 | Fragmental-coarse-continuous From above Cut by similar to above mafic Dikes at 261.1 to 272.4, 287.0 to 287.7 288.5 to 294.0, 304.3 to 305.0, 306.8 to 307.3, 307.8 to 309.6, 310.0 to 312.5 (2"-6" dikes) 213.5 to 214.5 - contacts irregular, sharp and mostly discordant. At 268 to 284.0 - section of up to 3" sil.frag. From 284.0 to 312 frag. of up to 1/2" sil frags. Remainder up to 1" sil frags. Sheared and sericitic and/or bedded at 55-60° to CA Little sulphides diss throughout (py) | | | | | | Samples - 268 (4") 281.5 (7") 288 (4") 296.7 (4") 316.2 (3") 322.6 (3") |

FORM 822

NORTH _____
 EAST. _____
 ELEV. _____
 AZIM. _____
 DIP _____

DIAMOND DRILL REPORT

PROPERTY _____

HOLE NO. **AK-1**

COMMENCED _____
 FINISHED _____
 PURPOSE OF _____
 HOLE _____

| FROM | TO | DESCRIPTION | CORE SAMPLES | | | | | DESCRIPTION OF SAMPLE |
|-------|-------|--|--------------|----|--------|-------|-------|---|
| | | | FROM | TO | RECOV. | WIDTH | ASSAY | |
| 371.6 | 385.5 | F. to M. grained dark grey amphibolitic intrusive - similar to above except finer w occasional blue qtz. eye. Some diss py. Spots of feldspar - anhedral-porphyrific contacts sharp & discordant at 55° (shear) and 55° to CA. Inclusion of above vol at 384.2 to 384.7 | | | | | | Sample at 377.5 |
| 385.5 | 391.3 | Acid amygdaloidal vol-as at 336.2 to 371.6 with last 6" somewhat frag. int. as above at 385.9 to 386.0 sheared and/or bedded at 55° to CA few diss sulphides - py | | | | | | Sample 391.1 |
| 391.3 | 396.4 | Amphibolitic int. - as at 371.6 to 385.5 w occasional Blue qtz. eye. contacts sharp at 60° to CA.-little sulphide. | | | | | | |
| 396.4 | 410.0 | Acid volcanic-continuation of above less amygdaloidal and more frag. with chloritic section at 400.1 to 403.8 sheared/bedded at 55° to CA w 1" needles of amphi-dole Some diss po. py. | | | | | | 398.8 (4") Samples at 403.2 (4") 406.0 (4") |

Location of Collar from #3 of K-40078 East 170'
South 310'

FORM 822

NORTH On XL-2+ OOS
 EAST. at 7 + 84E
 ELEV. _____
 AZIM. Collar - 560 E
 DIP Collar - 55° 250-51°
498' -48°

DIAMOND DRILL REPORT

PROPERTY KOZOWY - DRYDEN
Claim - K-40078.

HOLE NO. AK-2
 COMMENCED November 7/69
 FINISHED November 11/69
 PURPOSE OF _____
 HOLE Exploration

| FROM | TO | DESCRIPTION | CORE SAMPLES | | | | | DESCRIPTION OF SAMPLE |
|-------|-------|---|--------------|----|--------|-------|-------|------------------------|
| | | | FROM | TO | RECOV. | WIDTH | ASSAY | |
| 0 | 11.0 | Overburden - casing | | | | | | |
| 11.0 | 73.6 | Acid fragmental - grey with siliceous $\frac{1}{4}$ - 1" fragments uniform throughout lineated at 45-35° to CA (shearing) with Amphibolitic, chloritic and sericitic ground mass. Almost uniformly Diss w fine Pyrite, po, and very little chalco in ground mass. | | | | | | |
| (18.9 | 25.8) | Intruded by Amphibolitic int. | | | | | | from 60-63 ground core |
| (44.5 | 45.4) | Dike, massive, grey green, med to fine grained - diorite textured contacts sharp and chilled at 45 & 35° to CA. Lower contact of frag. tuffaceous from 66 on. | | | | | | |
| 73.6 | 79/8 | Feldspar porphyry dike-chilled reddish contacts at 45° with interior of a grey siliceous dike with 1/16" euhedral to anhedral feldspar laths in very fine grained sil. ground mass. | | | | | | |

KENORA MINING DIV.
RECEIVED
 FEB - 6 1970
 AM 7:20 PM 5:50

A

NORTH _____
 EAST. _____
 ELEV. _____
 AZIM. _____
 DIP _____

DIAMOND DRILL REPORT

PROPERTY _____

HOLE NO. _____
 COMMENCED AK 2 _____
 FINISHED _____
 PURPOSE OF _____
 HOLE _____

| FROM | TO | DESCRIPTION | CORE SAMPLES | | | | | DESCRIPTION OF SAMPLE |
|--------|--------|--|--------------|----|--------|-------|-------|-----------------------|
| | | | FROM | TO | RECOV. | WIDTH | ASSAY | |
| 79.8 | 136.3 | Int. pillowed, amygdaloidal volcanic grey, grey fine to med. grained amphydolytic volcanic with stretch ^{ed} elliptical 1/8 - 1/4" amygdules (carbonate) and tuffaceous (2-3" interbeds every foot or 1.5 feet. Some Diss py, po, chalco in interbed tuffs. Sheared at 35° to CA. Lower contact with frags sharp at 35° to CA. | | | | | | |
| (100.2 | 107.8) | Intruded by Int. dikes | | | | | | |
| (116.3 | 125.0) | As above with randomly oriented 1/16" amphibole crystals. | | | | | | |
| (83.8 | 85.9) | Feldspar porphyry dike-as above | | | | | | |
| 136.3 | 212.9 | Fragmental-as above described becoming finer tuff deeper in hole Local, py, po. chalco diss at 151.0 to 151.5. | | | | | | |
| (143.1 | 146.5) | Above Des. Int. intrusions at 143.4 to | | | | | | |
| (147.7 | 148.1) | 146.5 and 147.2 to 148.1-pyritic | | | | | | |
| (166.2 | 181.6) | also at 166.2 to 181.6, 183.9 to | | | | | | |
| (183.9 | 188.2) | 188.2, 190.1 to 203 | | | | | | |
| (190.1 | 203) | | | | | | | |

NORTH _____
 EAST _____
 ELEV. _____
 AZIM. _____
 DIP _____

DIAMOND DRILL REPORT

PROPERTY _____

COMMENCED _____
 FINISHED _____
 PURPOSE OF _____
 HOLE _____

| FROM | TO | DESCRIPTION | CORE SAMPLES | | | | | DESCRIPTION OF SAMPLE |
|--------|--------|---|--------------|-------|--------|-------|-------|-----------------------|
| | | | FROM | TO | RECOV. | WIDTH | ASSAY | |
| | | Some py, po, chalco diss throughout qtz. vein at 169.4 to 170.0 | | | | | | |
| 212.9 | 232.0 | Feldspar porphyry dike - as Des. above at 45° to CA massive med. grained, grey siliceous. Few pyritic qtz. stringers w̄ tourmaline- 22.5 and 24.2 chilled contacts. | 221.5 | 224.5 | | | | |
| 232.0 | 336.6 | Fragmental -as above Becoming coarser down hole Sulphides as above w̄ oDD splash | | | | | | |
| (239.0 | 247.2) | Intruded by Int. dikes as | | | | | | |
| (283.1 | 286.1) | Described above at 239 to | | | | | | |
| (291.4 | 294.3) | 247.2, 283.1 to 286.1, 291.4 to 294.3 (@ 45°) | | | | | | |
| (201.5 | 311.0) | Feldspar porphyry-acidic dike finer grained than above w̄ 1/32"/ feldspar phenocrysts - bleached acidic contacts-sharp at 60° - pyritic at contacts - | | | | | | |

NORTH _____
 EAST. _____
 ELEV. _____
 AZIM. _____
 DIP _____

DIAMOND DRILL REPORT

PROPERTY _____

COMMENCED _____
 FINISHED _____
 PURPOSE OF _____
 HOLE _____

| FROM | TO | DESCRIPTION | CORE SAMPLES | | | | | DESCRIPTION OF SAMPLE |
|--------|--------|--|--------------|----|--------|-------|-------|-----------------------|
| | | | FROM | TO | RECOV. | WIDTH | ASSAY | |
| 441.1 | 446.1 | Feldspar porphyry- as at 301.5 to 311.0 | | | | | | |
| 446.1 | 498 | Fragmental - continued from above to end of hole with Diss sulphides- as above Intruded by int.med. grained | | | | | | |
| (464.8 | 486.1) | Dike at 464.8 to 486.1 Qtz. veins at 475.0 to 475.2 and 479.1 to 479.6 (50%) | | | | | | |
| 498 | | End of Hole | | | | | | |
| | | Logged by M. Krenko, Hollinger Mines Limited, TIMMINS, Ontario. December 11, 1969. | | | | | | |
| | | <i>M. Krenko</i> | | | | | | |