



52F13SE0010 22 BRIDGES

010

DIAMOND DRILLING

Township: Bridges

Report No: 22

WORK PERFORMED FOR: Rio Algom Exploration Inc.

RECORDED HOLDER: SAME AS ABOVE []

: OTHER []

<u>CLAIM NO.</u>	<u>HOLE NO.</u>	<u>FOOTAGE</u>	<u>DATE</u>	<u>NOTE</u>
K 818156, 157	1	346	Jan/86	(1)

NOTES: (1) #96-86

LOCATION: 800E 038N

# RIOCANEX INC.

## DIAMOND DRILL RECORD

HOLE No. : 1

PAGE 1 of

AZIMUTH : 160°

DIP : -60°

LENGTH : 105.46m 346 ft.

ELEVATION :

PROPERTY: Game Lake Claims

STARTED: January 23, 1986

CORE SIZE: BQ

DATE LOGGED: Jan. 26, 1986

CLAIM No. : K818156, 818157

COMPLETED: January 25, 1986

DIP TESTS: 60m, -52° 105m -49°

SECTION :

PURPOSE: Test HEM Anomaly

LOGGED BY: W. Benham *[Signature]*

INTERVAL		DESCRIPTION	SAMPLE No.	INTERVAL		LENGTH						
from	to			from	to							
0	1.35	Casing										
1.35	9.90	Pegmatite										
		Pink, coarse grained feldspar and grey to dark grey quartz. Minor muscovite and biotite										
		Two, 10-20 cm garnetiferous sediment inclusions from 1.83-2.35										
9.90	17.30	Garnet-Hornblende-Biotite Greywacke										
		20%, 2-8mm pale red garnets in black-green to dark grey matrix. Moderately to strongly magnetic										
		Foliation at 70°										
		Trace pyrrhotite, pyrite, chalcopyrite and sphalerite										
17.30	48.40	Biotite-Feldspar-Quartz Greywacke										
		Black to dark grey										
		Foliation at 65-70°										
		Upper contact gradational, decrease in garnets and lighter in colour with depth										
		Locally strongly magnetic over widths of 5-15 cm due to fine grained magnetite										

MINING GEOLOGICAL SURVEY  
ASSESSMENT FILES  
RESEARCH OFFICE  
AUG 22 1986  
RECEIVED

# RIOCANEX INC.

## DIAMOND DRILL RECORD

HOLE No. : 1

PAGE 2 of

INTERVAL		DESCRIPTION	SAMPLE No.	INTERVAL		LENGTH						
from	to			from	to							
		Scattered 0.1-2mm pale red to red garnets 2-3% white quartz-rich pegmatite veins										
48.40	49.55	Oxide Iron Formation Siliceous, strongly magnetic Bedding at 50-60°, black to grey compositional bedding 15%, 1-3mm pale garnets. 3-5% disseminated pyrrhotite, <1% pyrite, trace sphalerite										
49.55	54.15	Feldspar-Quartz-Biotite Greywacke Garnetiferous, magnetic 10% 1-3mm pale garnet clusters <1% disseminated pyrrhotite, trace pyrite, sphalerite 50.85-51.65 Pink pegmatite 51.85-51.95, 52.1-52.3, 53.05-53.20 White pegmatite veins										
54.15	57.25	Feldspar - Quartz-Biotite Greywacke Bedding at 75°, locally magnetic										
57.25	59.20	Oxide Iron Formation Siliceous, well developed bedding at 75° 1-2% disseminated pyrrhotite, trace pyrite sphalerite and chalcopyrite										

# RIOCANEX INC.

## DIAMOND DRILL RECORD

HOLE No. : 1

PAGE 3 of

INTERVAL		DESCRIPTION	SAMPLE No.	INTERVAL		LENGTH							
from	to			from	to								
59.20	60.40	Sulphide Zone/Siliceous Oxide Iron Formation											
		59.2-59.8											
		40% pyrrhotite, disseminated and 0.1 to 1 cm											
		veins at 75-80° in grey biotitic siliceous											
		garnetiferous matrix 1% pyrite, trace sphalerite											
		chalcopyrite											
		59.8-60.4											
		5% disseminated pyrrhotite											
		<1% pyrite, trace sphalerite, chalcopyrite											
60.40	63.80	Quartz-Feldspar-Biotite Siliceous Sediment											
		Bedding at 70-75°, dark grey to grey											
		<1% pyrrhotite, pyrite, trace sphalerite											
		61.82											
		0.5 cm siliceous stringer at 70° with 50% sphalerite											
		1% pyrite											
63.80	65.87	Pegmatite											
		White, 30% grey quartz, 65% white feldspar											
		Occasional garnets, biotite											
		Contacts at 65-70°											
65.87	72.85	Feldspar-Quartz-Biotite Greywacke											
		Grey to green grey, feldspathic											
		Foliation at 75-80°											
		Trace pyrrhotite pyrite											

# RIOCANEX INC.

## DIAMOND DRILL RECORD

HOLE No. : 1

PAGE 4 of

INTERVAL		DESCRIPTION	SAMPLE No.	INTERVAL		LENGTH							
from	to			from	to								
		67.35-68.12											
		Foliation at 60°											
		66.85-67.35, 68.12-68.83											
		Pink to white pegmatite											
72.85	77.35	Pegmatite											
		Pink											
77.35	79.65	Biotite-Feldspar-Quartz Greywacke											
		Locally some diopside											
79.65	82.40	Pegmatite											
		White, very coarse grained, 20% dark smoky quartz											
		Occasional garnet, muscovite, biotite, tourmaline											
82.40	84.12	Calc-Silicate Gneiss/Biotite Hornblende Greywacke											
		Foliation at 75-90°											
		Diopside, chlorite, biotite, hornblende											
		50% greywacke, dark green black, hornblende-rich											
84.12	85.38	Pink Pegmatite											
85.38	88.60	Calc-Silicate/Biotite-Hornblende Greywacke											
		87.75-88.10											
		< 1% disseminated pyrrhotite											
		< .5% chalcopyrite											

# RIOCANEX INC.

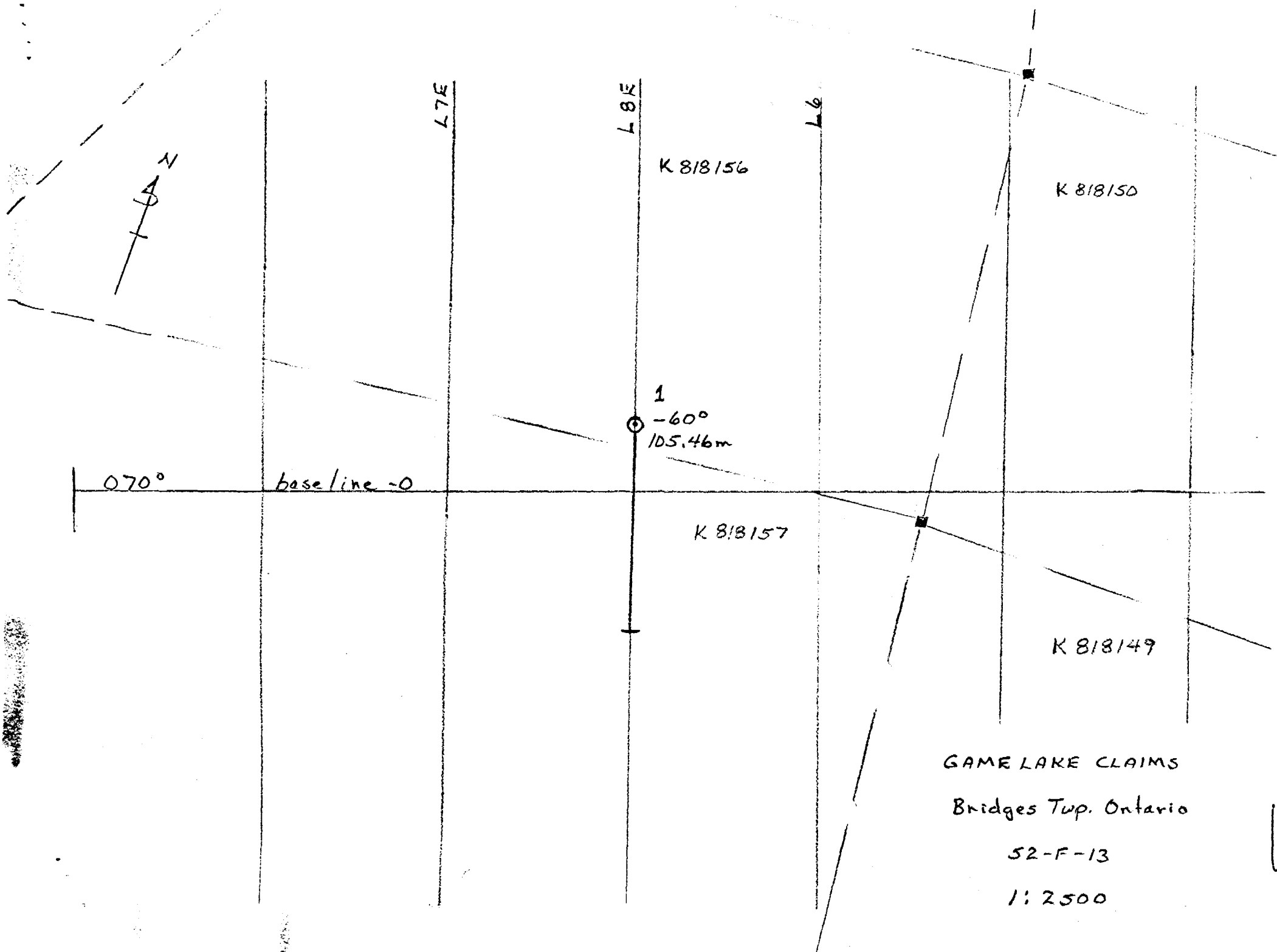
## DIAMOND DRILL RECORD

HOLE No.: 1

PAGE 5 of

INTERVAL		DESCRIPTION	SAMPLE No.	INTERVAL		LENGTH											
from	to			from	to												
88.60	90.70	Pink Pegmatite Contacts at 70°															
90.70	96.13	Calc-Silicate/Biotite Hornblende Greywacke 65/35, green to black green Foliation at 70-80°															
96.13	101.10	Pink Pegmatite															
101.10	104.35	Calc-Silicate Gneiss Foliation at 70-80° 101.1-102.45 Chloritic, contorted, banding parallel to C.A. 103.0-104.35 Foliation at 65°															
104.35	End	Pink Pegmatite 3% 1-2mm red garnets															
	105.46	End of Hole															

ONTARIO GEOLOGICAL SURVEY  
 ASSESSMENT FILES  
 RESEARCH OFFICE  
  
 AUG 22 1980  
  
 RECEIVED



K 818156

K 818150

K 818157

K 818149

GAME LAKE CLAIMS

Bridges Twp. Ontario

52-F-13

1:2500

*WFB*  
20/7/86



52F13SE0010 22 BRIDGES

900

ly required data on a separate form for each  
of work to be recorded (see table below).  
eo-technical work use form no. 1362 "Report  
rk (Geological, Geophysical, Geochemical and  
idities)".

# 96-86

Name and Postal Address of Recorder:  
Rio Algom Exploration Inc.  
120 Adelaide St. W., Toronto, Ontario M5H 1W5

Prospector's Licence No.  
A30260

Summary of Work Performance and Distribution of Credits

Total Work Days Cr. claimed 346	Mining Claim			Mining Claim			Mining Claim		
	Prefix	Number	Work Days Cr.	Prefix	Number	Work Days Cr.	Prefix	Number	Work Days Cr.
for Performance of the following work. (Check one only) <input type="checkbox"/> Manual Work <input type="checkbox"/> Shaft Sinking Drifting or other Lateral Work. <input type="checkbox"/> Compressed Air, other Power driven or mechanical equip. <input type="checkbox"/> Power Stripping <input checked="" type="checkbox"/> Diamond or other Core drilling <input type="checkbox"/> Land Survey	K	803829	40	K	818151	5		818179	40
		803836	5		818152	5		818180	5
		803839	5		818153	40			
		803843	40		818156	16			
		803844	40		818157	5			
		818148	5		818168	5			
		818149	40		818170	40			
		818150	5		818171	5			

All the work was performed on Mining Claim(s): K818156, 818157  
22 days 303 days

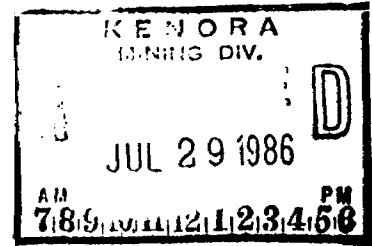
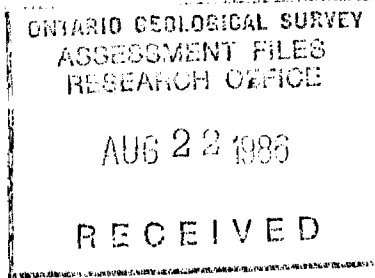
Required Information eg: type of equipment, Names, Addresses, etc. (See Table Below)

Hole 1 800E, 038N Az 160°, Dip 60° 105.46m, 346 ft.

Drill Contractor: N. Morissette Diamond Drilling Ltd.  
Box 789  
Haileybury, Ontario

Drilling done: January 23, 1986 to January 26, 1986

Diameter of Core: BQ, 1 7/16"



Date of Report: 28/7/86  
Recorded By or Agent (Signature): [Signature]

Certification Verifying Report of Work

I hereby certify that I have a personal and intimate knowledge of the facts set forth in the Report of Work annexed hereto, having performed the work or witnessed same during and/or after its completion and the annexed report is true.

Name and Postal Address of Person Certifying

Wayne Benham

Date Certified: 28/7/86  
Certified by (Signature): [Signature]

c/o Rio Algom Exploration Inc.

Table of Information/Attachments Required by the Mining Recorder

Type of Work	Specific information per type	Other information (Common to 2 or more types)	Attachments
Manual Work	Nil	Names and addresses of men who performed manual work/operated equipment, together with dates and hours of employment.	Work Sketch: these are required to show the location and extent of work in relation to the nearest claim post.
Shaft Sinking, Drifting or other Lateral Work			
Compressed air, other power driven or mechanical equip.	Type of equipment	803827	
Power Stripping	Type of equipment and amount expended. Note: Proof of actual cost must be submitted within 30 days of recording.		
Diamond or other core drilling	Signed core log showing; footage, diameter of core, number and angles of holes.	Names and addresses of owner or operator together with dates when drilling/stripping done.	Work Sketch (as above) in duplicate
Land Survey	Name and address of Ontario land surveyor.	Nil	Nil



