



52F13SW0019 20 MACNICOL

010

Diamond Drilling

Township of MACNICOL

Report NO: 20

Work performed by: Kerr-Addison Mines

Claim NO	Hole NO	Footage	Date	Note
K 416777	M-75-2	485'	Oct/75	(1)
K 416777	M-75-1	453.0'	Oct/75	(2)
K 416775	M-75-3	405.0'	Oct/75	(2)

Notes:

(1) #118-75 Jackman Twp.

(2) #62-76

DIAMOND DRILL RECORD

LOGGED BY

J. H. Campbell

Karr Addison Mines Ltd.

PROPERTY Washcol Township Project 0-20

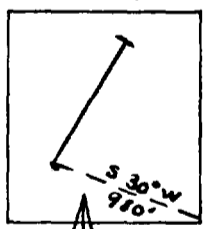
LATITUDE 28°00'N BEARING OF HOLE N 61°24' STARTED October 11, 1975

DEPARTURE 8+808 DIP OF HOLE 41°50' COMPLETED October 14, 1975

ELEVATION _____ DIP TESTS 41° corrected at 480' DEPTH 485'

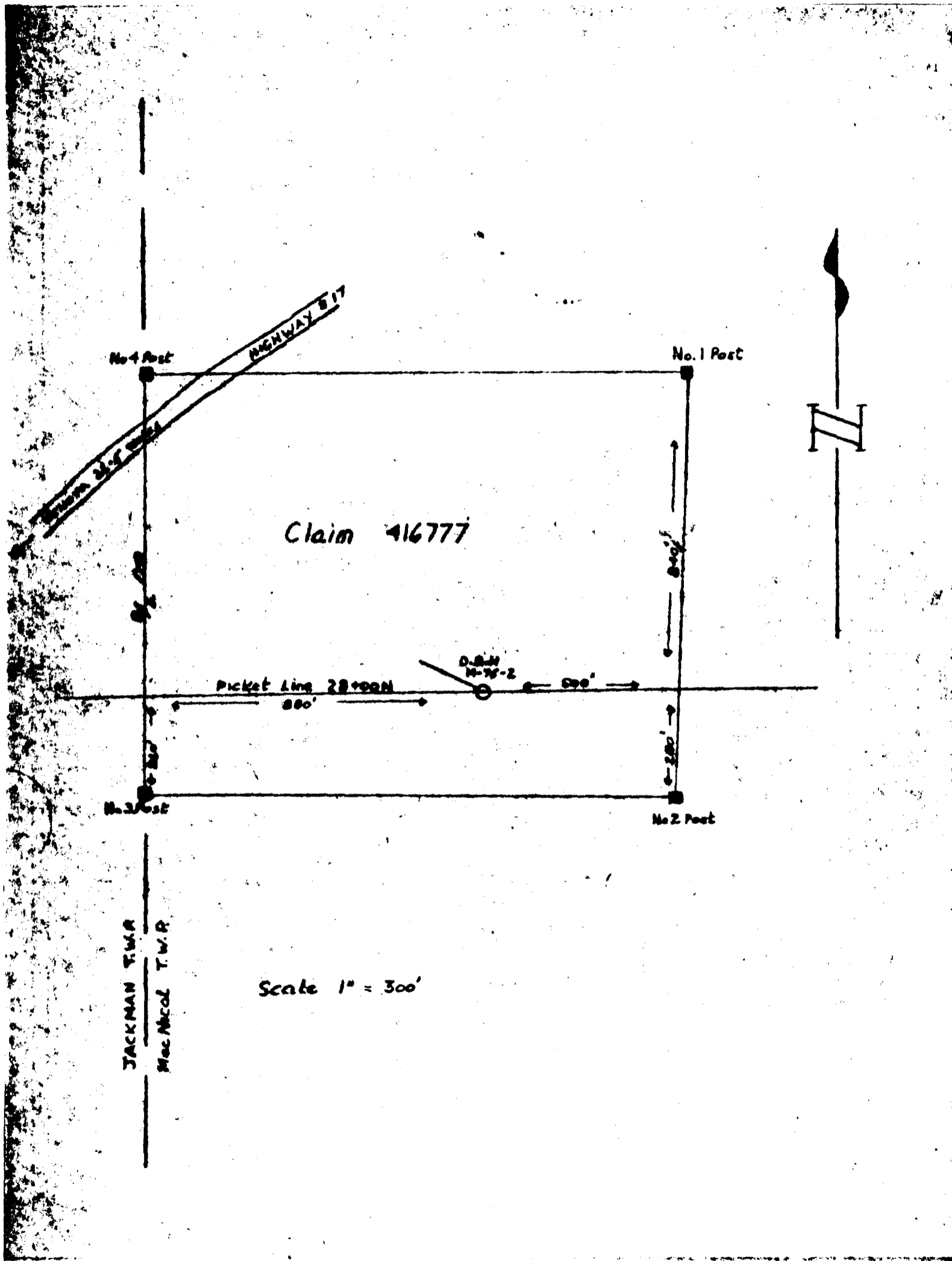
D.D.H. No. N-75-2 PAGE 1

CLAIM No. 426777



DIRECTION AND DISTANCE FROM
NE. CLAIM POST

FOOTAGE FROM	TO	DESCRIPTION	SAMPLE No.	FOOTAGE		SAMPLE LENGTH	ASSAY	
				FROM	TO			
0	7.0	Casing						
7.0	18.5	Basalt - fine grained rare white carbonate thread at 550 to core axis 17.0' - 18.5' some stringers of granite at 600 to core axis						
18.5	90.0	Granite. Pegmatite pinkish to white Orange stains not pervasive but indiscriminately scattered in hairline fractures Basalt Darker red hematite staining 35' - 48', 69' - 77' Broken contact						
90.0	124.0	Basalt highly altered - medium to coarse grained 3% pyrrhotite - trace disseminated chalcopyrite. Lamination at 500 to CA 102.0' - 104.0' granite						
124.0	339.5	Granite pegmatite in @ 80° out at 75° . Pinkish coloration 128.0' 3rd basalt inclusion 550 to CA Dark blood red hematite staining 124'-138', 146'-150', 168'-170', 187'-191', 213'-215', 216'-221', increasing red blood coloration consistent throughout after 229'						
339.5	485.0	Rare orange stains on slip faces indiscriminately located throughout this section Basalt - slightly magnetic, lamination at 500.						



No. 4 Post

No. 1 Post

Claim 41677

Picket Line 28+00N
800'

D.B.M.
M-75-2

500'

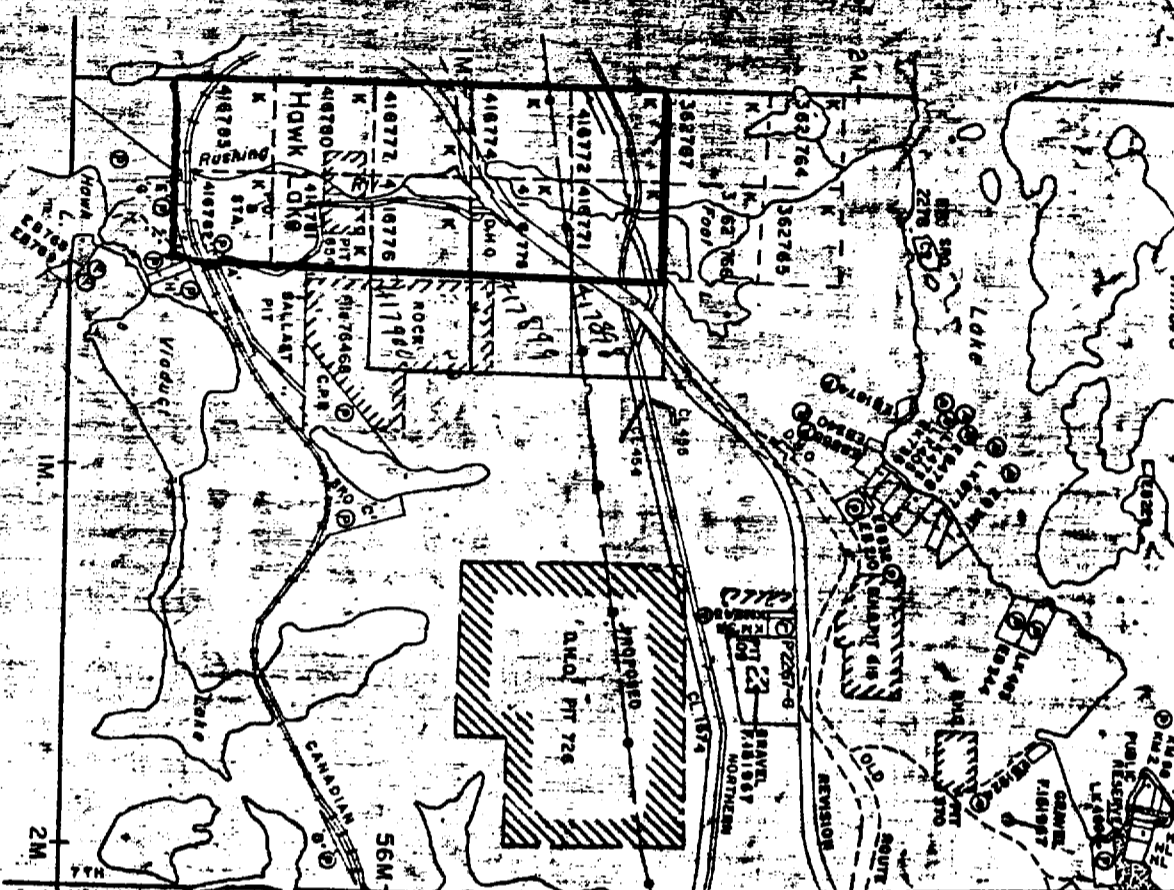
JACKMAN T.W.R.
MacNicol T.W.R.

Scale 1" = 300'

No. 2 Post

No. 3 Post

Jackman



Desmond Twp.-M.1970

NOTES

400' Surface Rights Reservation ground on lakes and rivers.

RECEIVED
KENORA MINING DIV.
AUG 8 1975

AM
7:89.10.11.19.1.9.5.4

DATE OF ISSUE
AUG 5 1975

04/2/75

Mac Nicol & Twp

PLAN NO. M.2002

ONTARIO

MINISTRY OF NATURAL RESOURCES
SURVEYS AND MAPPING BRANCH

Bob K.

DIAMOND DRILL RECORD

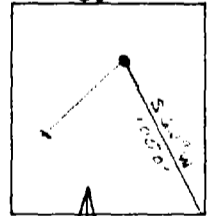
LOGGED BY

P. W. Campbell

DATE

D.D.H. No. 1-1-1 PAGE 1

PROPERTY Mac
 LATITUDE 54° 55' 00" BEARING OF HOLE S 69° E STARTED October 7, 1975
 DEPARTURE 31408 DIP OF HOLE -45° COMPLETED October 9, 1975
 ELEVATION _____ DIP TESTS -42° @ 150' DEPTH 153'



CLAIM No. 1326777
 DIRECTION AND DISTANCE FROM
 NE. CLAIM POST

FOOTAGE FROM TO	DESCRIPTION	SAMPLE No.	CORE		SAMPLE LENGTH	CORE ASSAY	Sample From To	ASSAY		
			lbs.	per ton						
0	Surface	9511	62.5	67.5	5.0	.028	9227	30	10	.0002
0	Basalt, fine grained, 14.5' to core ends. Some 25-38 disintegrated	9512	67.5	72.0	4.5	.034	9228	10	50	.0011
0	Supercrystalline, slightly disintegrated but none noticeable. (5%) from 62'-72'	9513	72.0	77.0	5.0	.198	9229	50	60	.0011
0	1/2" fine grained, granitic in texture	9514	77.0	82.0	5.0	.160	9230	60	70	.0015
72.0	Basalt. 14.5' to 140' to 140' at 55°. Also grained for approximately	9515	82.0	86.5	4.5	.290	9231	70	80	.0011
0	10 feet from contact - some minor thread fractured with some orange stains,	9516	86.5	92.0	5.5	.274				
0	33' - 105', 112' - 130'.	9517	92.0	97.0	5.0	.24				
161.0	Basalt, cherty, appears more altered than above basalt. 35 carbonate threads at various angles. This basalt may be a raft. (There is a raft exposure on surface).	9518	97.0	101.5	4.5	.22				
0		9519	101.5	106.5	5.0	.19				
0		9520	106.5	111.5	5.0	.324				
176.0	Granite pegmatite in a 75° cut at 35°, similar to above. Red blood coloration appears 182'-183', 187'-189', 191'-195', 197'-199', 201'-204'	9521	111.5	117.0	5.5	.32				
0		9522	117.0	121.0	4.0	.254				
208.0	Basalt fine grained cherty through various angles, but generally at 45° to 60°. 25 fine grained disintegrated pyrites and pyrrhotite	9523	121.0	126.0	5.0	.042				
0		9524	126.0	131.0	5.0	.17				
237.5	Pegmatite as above. In a 50°. Minor orange stains on fracture 247'-250', 331', 335.5', 340', 422'-427', 429'.	9525	131.0	135.5	4.5	.132				
0		9526	135.5	140.5	5.0	.142				
0	Good red coloration at least 50% 251'-298', 375'-401'. Broken contact	9527	140.5	145.0	4.5	.228				

DIAMOND DRILL RECORD

LOGGED BY

W. S. Langford

PROPERTY

D.D.H. No. 7-1531

PAGE 2

LATITUDE _____ BEARING OF HOLE _____

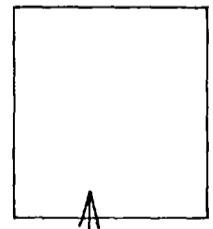
STARTED October 7, 1955

DEPARTURE _____ DIP OF HOLE _____

COMPLETED October 7, 1955

ELEVATION _____ DIP TESTS _____

DEPTH 153'



CLAIM No. 1000777
DIRECTION AND DISTANCE FROM
NE. CLAIM POST

FOOTAGE FROM	TO	DESCRIPTION	SAMPLE No.	CORE FOOTAGE		SAMPLE LENGTH	ASSAY
				FROM	TO		
128.5	153.0	Basalt, not bed. Fine grained chlorite. 10° insertion some minor radiation on fractures with fissile shales. 14-36 disseminated fine grained crystals.	9528	145.0	150.0	5.0	100
			9529	150.0	154.0	5.0	100
	153.0	END OF CORE.	9530	155.0	161.0	6.0	106
		(water return lost at approximately 100 feet in hole).	9531	176.0	181.0	5.0	104
			9532	181.0	186.0	5.0	104
			9533	186.0	191.0	5.0	100
			9534	191.0	196.0	5.0	100
			9535	196.0	201.0	5.0	110
			9536	201.0	206.0	5.0	100
			9537	237.5	242.0	4.5	105
			9538	242.0	247.0	5.0	100
			9539	247.0	252.0	5.0	105
			9540	252.0	257.0	5.0	100
			9541	257.0	262.0	5.0	100
			9542	262.0	267.0	5.0	100
			9543	267.0	272.0	5.0	100
			9544	272.0	277.0	5.0	100

DIAMOND DRILL RECORD

LOGGED BY

John Campbell

PROPERTY SECTION 30, T12N, R10E, S10E

DATE 10/10/1975

D.D.H. No. 357-1

PAGE 3

LATITUDE _____ BEARING OF HOLE _____

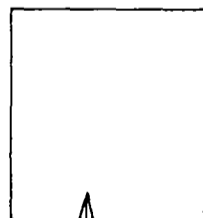
STARTED October 7, 1975

DEPARTURE _____ DIP OF HOLE _____

COMPLETED October 9, 1975

ELEVATION _____ DIP TESTS _____

DEPTH _____



CLAIM No. _____
DIRECTION AND DISTANCE FROM

NE. CLAIM POST

Core

FOOTAGE FROM	TO	DESCRIPTION	SAMPLE No.	FOOTAGE		SAMPLE LENGTH	ASSAY	
				FROM	TO		U_3O_8	$238O_2$
			9515	277.0	281.5	4.5	tr	
			9516	281.5	286.0	4.5	0.005	
			9517	286.0	291.0	5.0	0.010	
			9518	291.0	296.0	5.0	tr	0.005
			9519	296.0	301.0	5.0	tr	
			9550	301.0	306.0	5.0	tr	
			9521	306.0	311.0	5.0	tr	
			9552	311.0	316.0	5.0	tr	
			9553	316.0	321.0	5.0	0.005	
			9554	321.0	326.0	5.0	tr	
			9555	326.0	331.0	5.0	0.005	
			9556	331.0	336.0	5.0	tr	
			9557	336.0	341.0	5.0	tr	
			9558	341.0	346.0	5.0	tr	
			9559	346.0	351.0	5.0	tr	
			9560	351.0	356.0	5.0	tr	tr
			9561	356.0	361.0	5.0	tr	

DIAMOND DRILL RECORD

LOGGED BY

R. C. England

PROPERTY

D.D.H. No. _____

PAGE _____

LATITUDE _____

BEARING OF HOLE _____

STARTED October 7, 1927

DEPARTURE _____

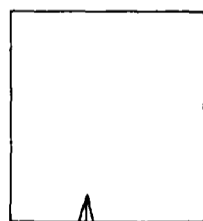
DIP OF HOLE _____

COMPLETED October 17, 1927

ELEVATION _____

DIP TESTS _____

DEPTH _____

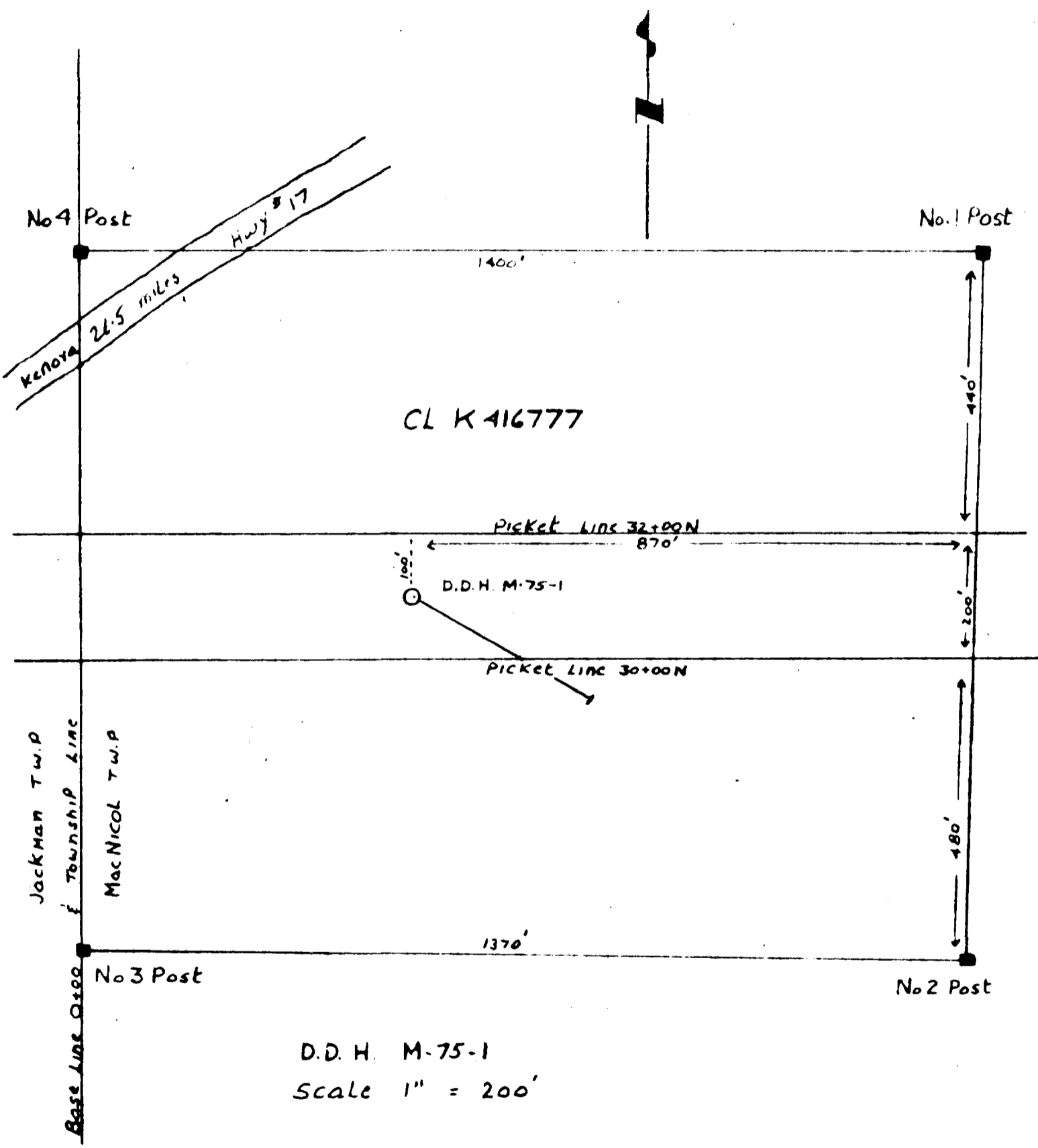


DIRECTION AND DISTANCE FROM CLAIM POST

NE. CLAIM POST

Core

FOOTAGE FROM	TO, Y.	DESCRIPTION	SAMPLE No.	FOOTAGE		SAMPLE LENGTH	ASSAY
				FROM	TO		
			9572	361.0	366.0	5.0	gr
			9573	366.0	372.0	5.0	gr
			9564	372.0	376.0	5.0	gr
			9565	376.0	381.0	5.0	gr
			9566	381.0	386.0	5.0	gr
			9567	386.0	391.0	5.0	gr
			9568	391.0	395.0	5.0	gr
			9569	396.0	401.0	5.0	gr
			9570	401.0	405.0	4.0	gr
			9571	405.0	409.0	4.0	0.005
			9572	409.0	413.0	4.0	0.010
			9573	413.0	418.0	5.0	0.010
			9574	418.0	423.0	5.0	0.005
			9575	423.0	428.0	5.0	0.005
			9576	428.0	433.0	5.0	gr
			9577	433.0	438.0	5.0	ml
			9578	438.0	443.0	5.0	ml



D.D.H. M-75-1
 Scale 1" = 200'

DIAMOND DRILL RECORD

LOGGED BY

John Campbell

Kerr Addison Pros. Ltd.

PROPERTY Maple Leaf Property

D.D.H. No. H-75-3

PAGE 1.

LATITUDE 44°00'N BEARING OF HOLE True Grid East

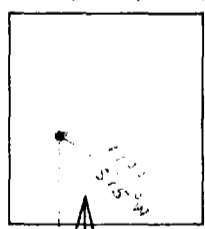
STARTED October 15, 1975

CLAIM No. R116775

DEPARTURE 24+50m DIP OF HOLE -15° COMPLETED October 17, 1975

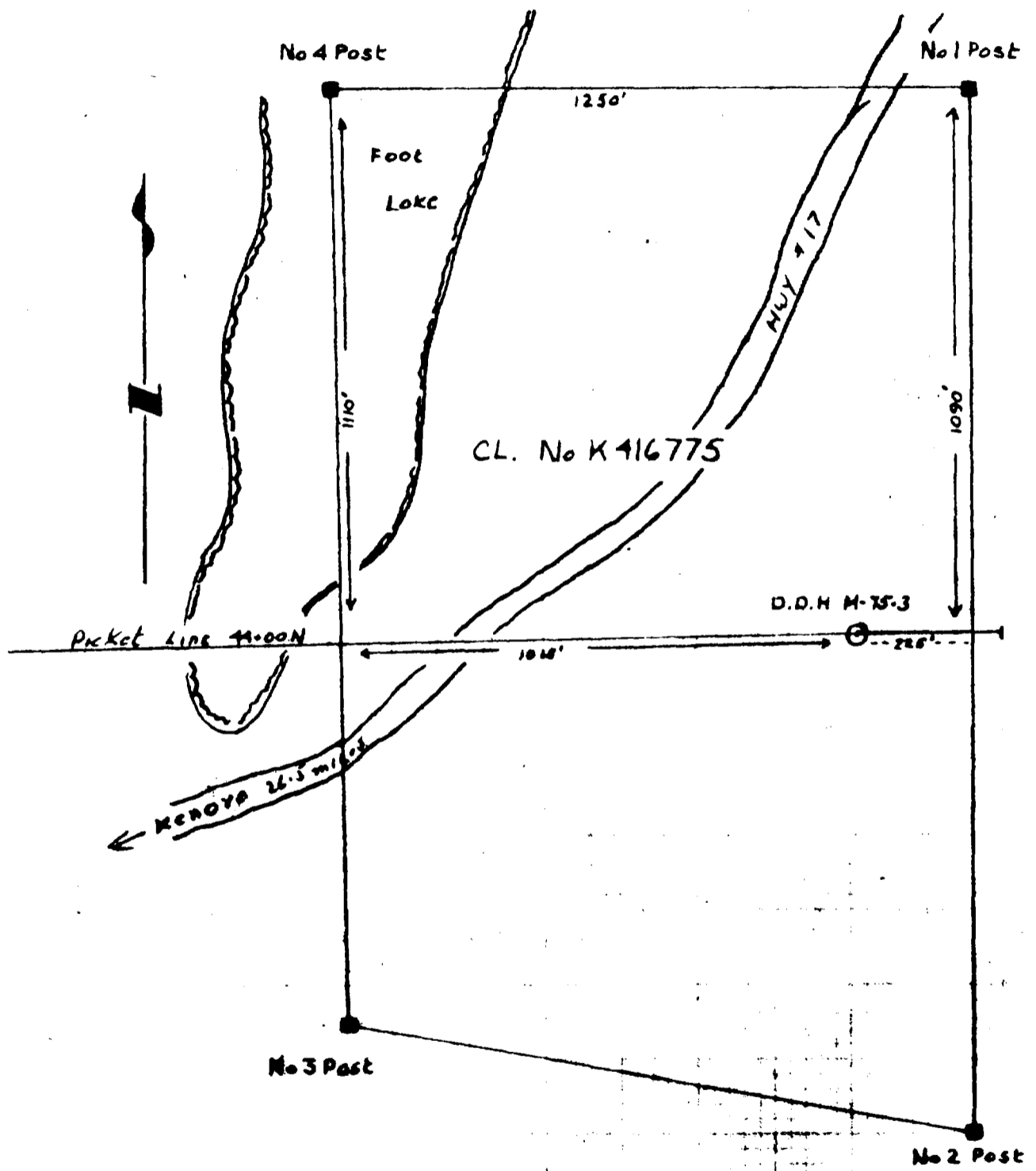
DIRECTION AND DISTANCE FROM

ELEVATION _____ DIP TESTS 12° @ 390° DEPTH 195.0'



NE. CLAIM POST

FOOTAGE FROM	TO	DESCRIPTION	SAMPLE No.	FOOTAGE		SAMPLE LENGTH	ASSAY	
				FROM	TO		U ₃₀₈	Lib. per ton
0	6.0	Casing						
6.0	44.0	Granite - generally pinkish coloration from orthoclase, some greyish at bottom due to biotite and plagioclase patches.						
44.0	62.0	2% Mn-diorite - linear at 50° to 74. Trace sulphides, fine grained	9801	62.0	67.0	5.0	nil	
62.0	154.0	Diorite - siliceous, generally pink coloration, massive homogeneous	9802	72.0	77.0	5.0	tr	
154.0	195.0	Basalt	9803	195.5	202.5	7.0	tr	
195.0	202.5	Porphyry, pinkish 1/2 radioactivity	9804	257.0	262.0	5.0	tr	
202.5	251.0	Basalt homogeneous - no definite linear	9805	262.0	267.0	5.0	nil	
251.0	405.0	Granite - coarse mixture of pinkish and grey granite	9806	267.0	272.0	5.0	0.09	
		307.0' - 309.0' sediments granitised. No radioactivity	9807	272.0	277.0	5.0	0.05	
		END OF HOLES						



D.D.H M-75-3
 Scale 1" = 300'